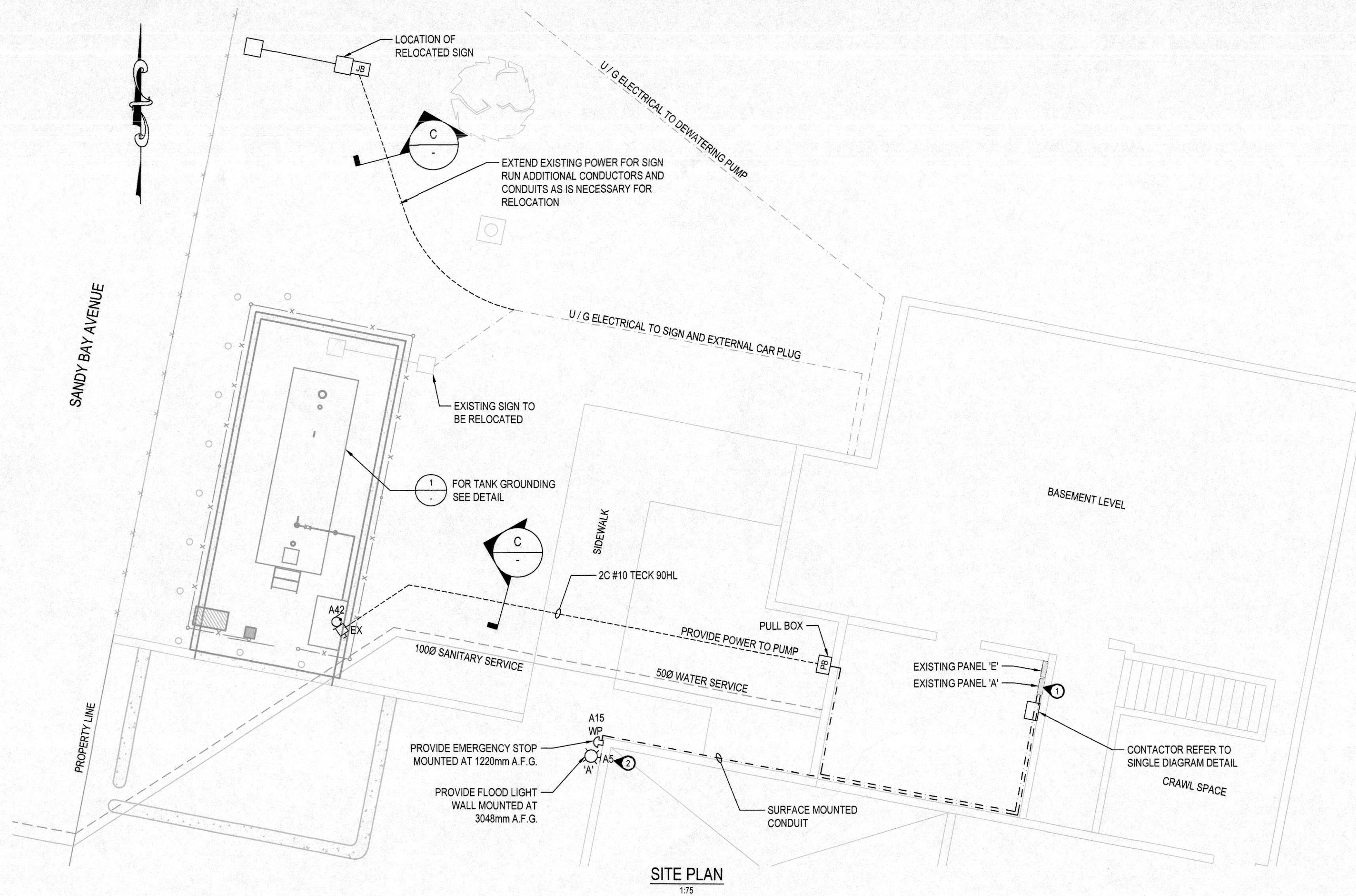
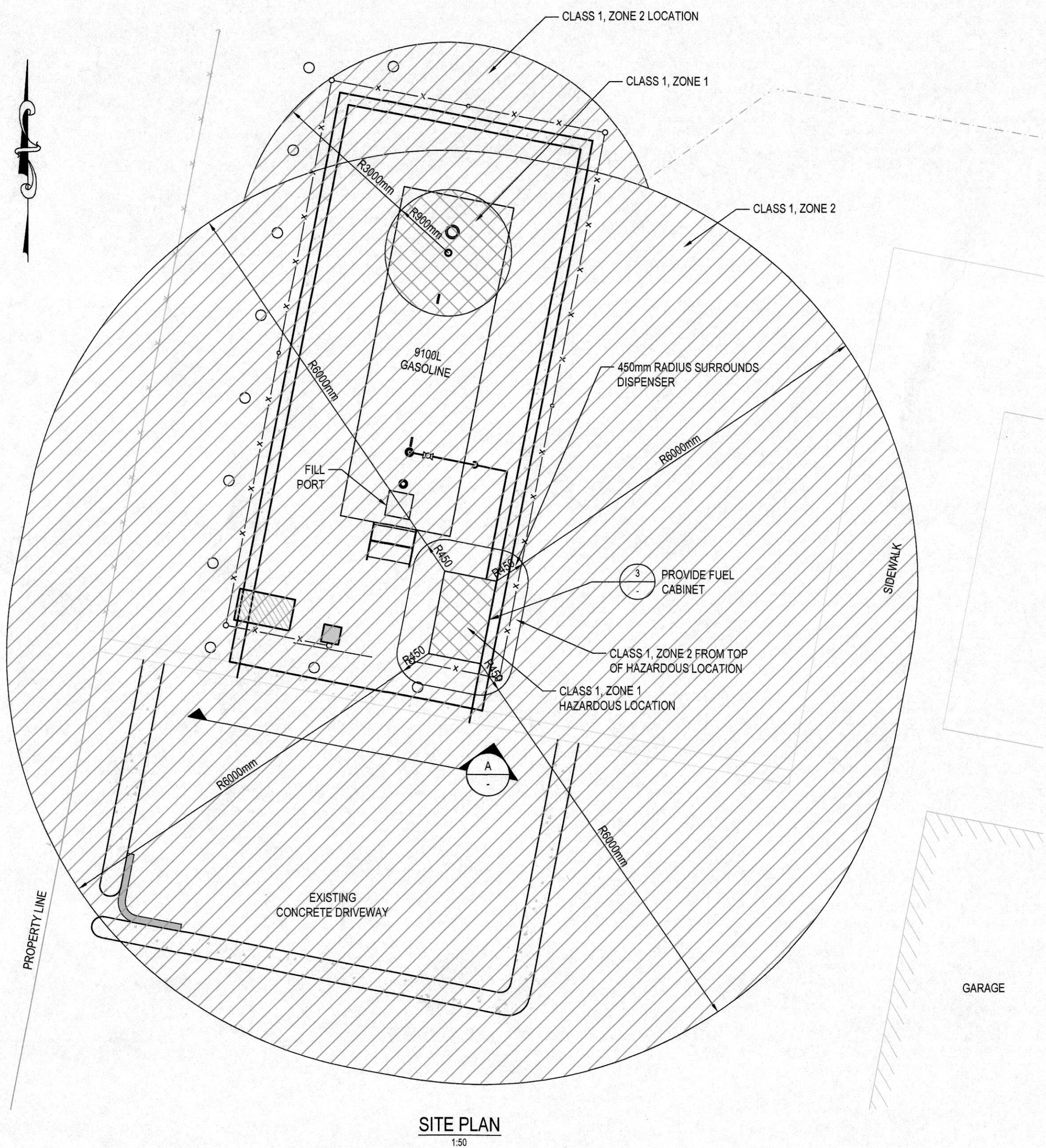
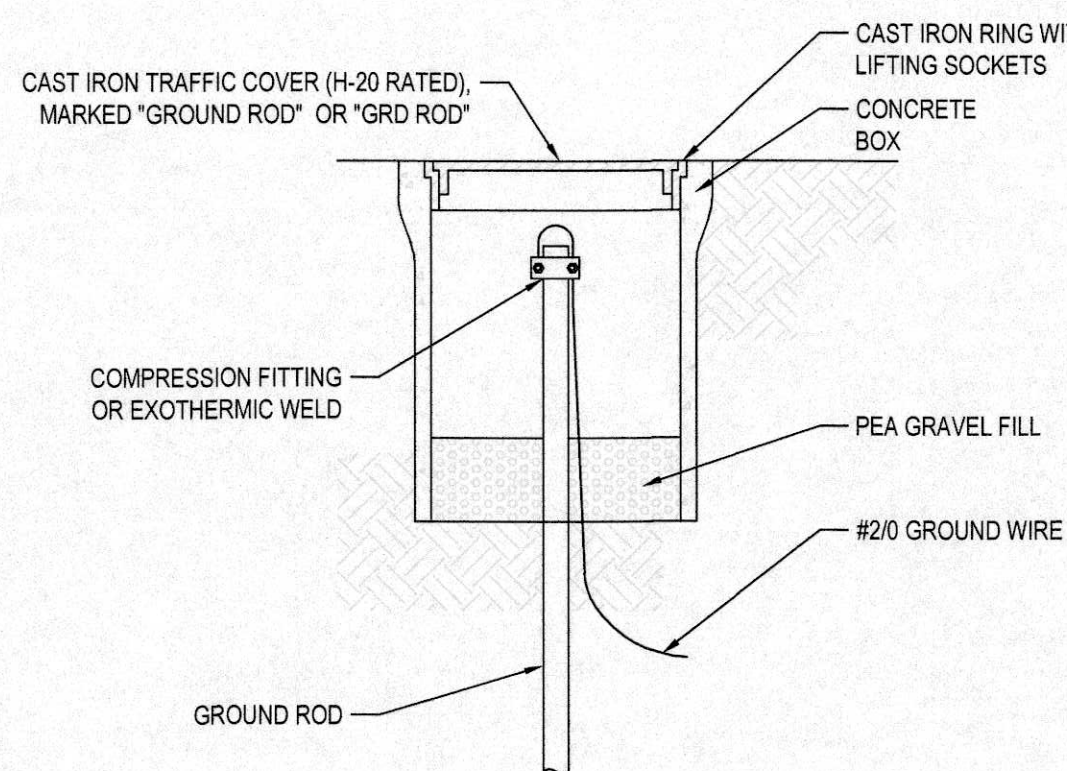


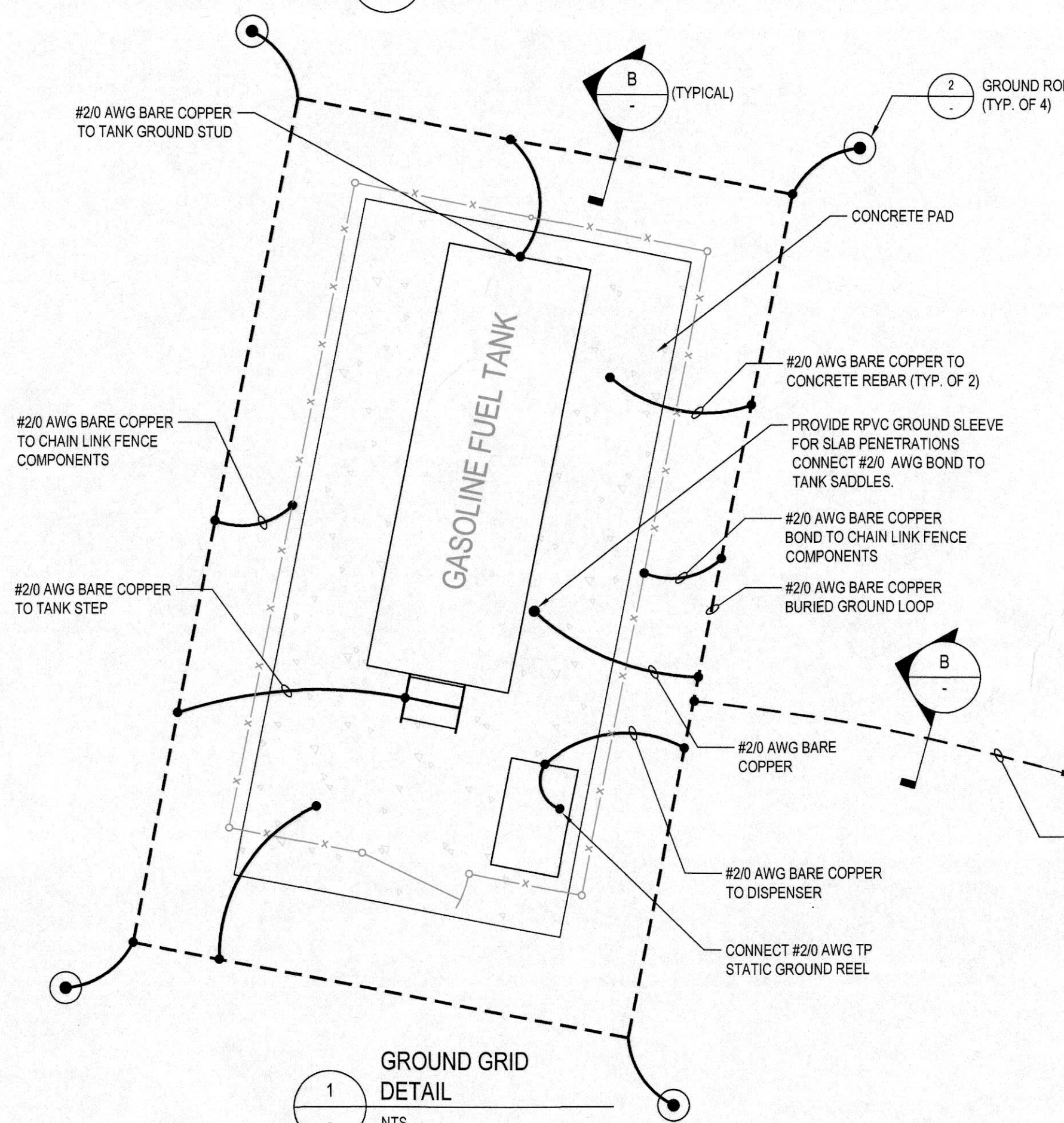
3 FUEL CABINET DETAIL
1:25



SITE PLAN
1:75



2 GROUND ROD DETAIL
NTS

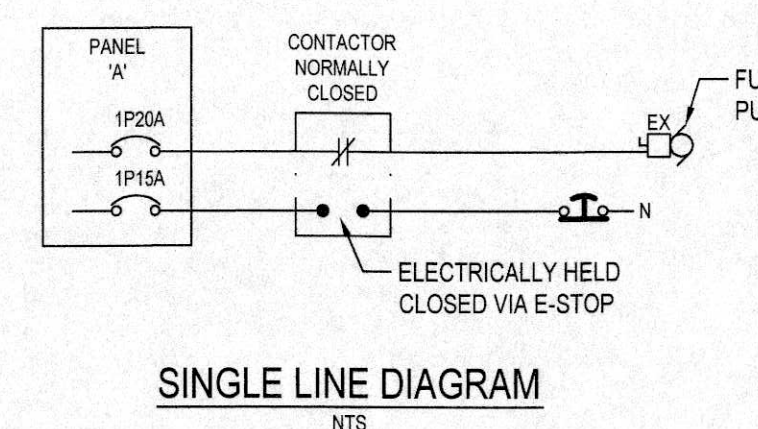


1 GROUND GRID DETAIL
NTS

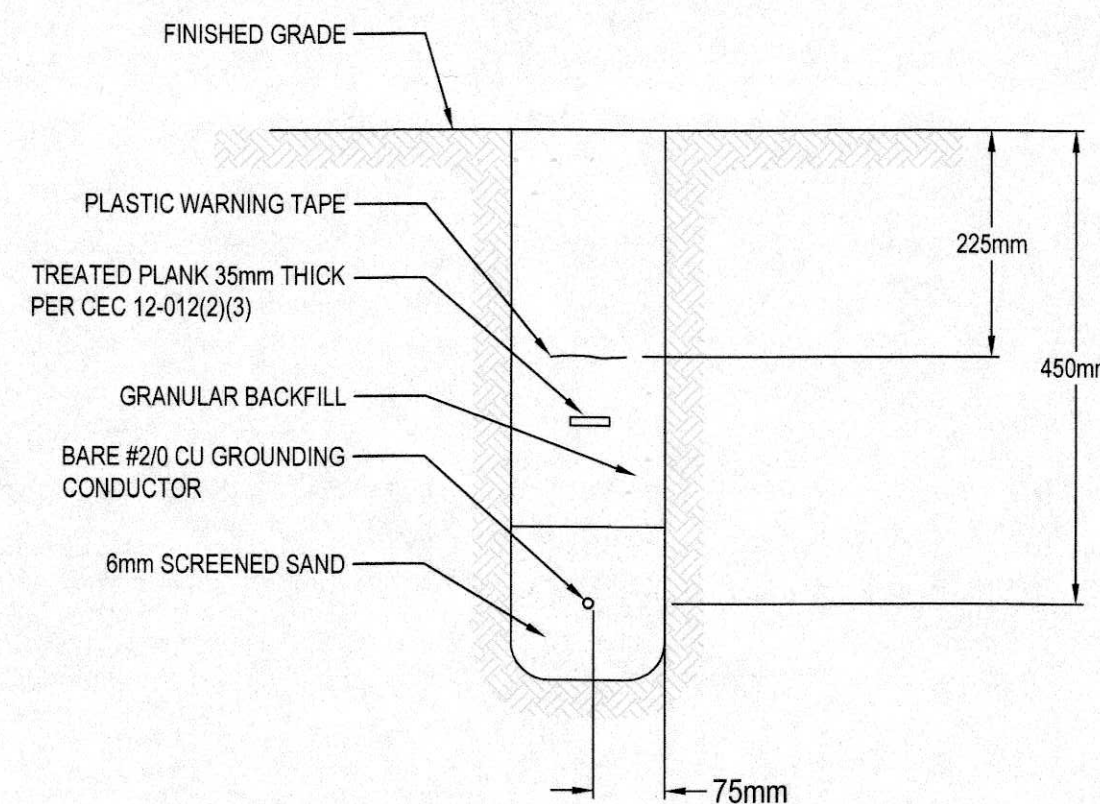
KEYNOTES:
1. PROVIDE TWO (2) BREAKERS IN PANEL 'A' FOR POWER TO PUMP AND EMERGENCY STOP SYSTEM. PANEL IS COMMANDER NGB-425L-225A, 18, 3W, 120V/240V.
2. CONNECT TO EXISTING EXTERIOR LIGHT CIRCUIT 'AS'.

LIMINAIRE SCHEDULE	
A	LED - WALL PACK 50W

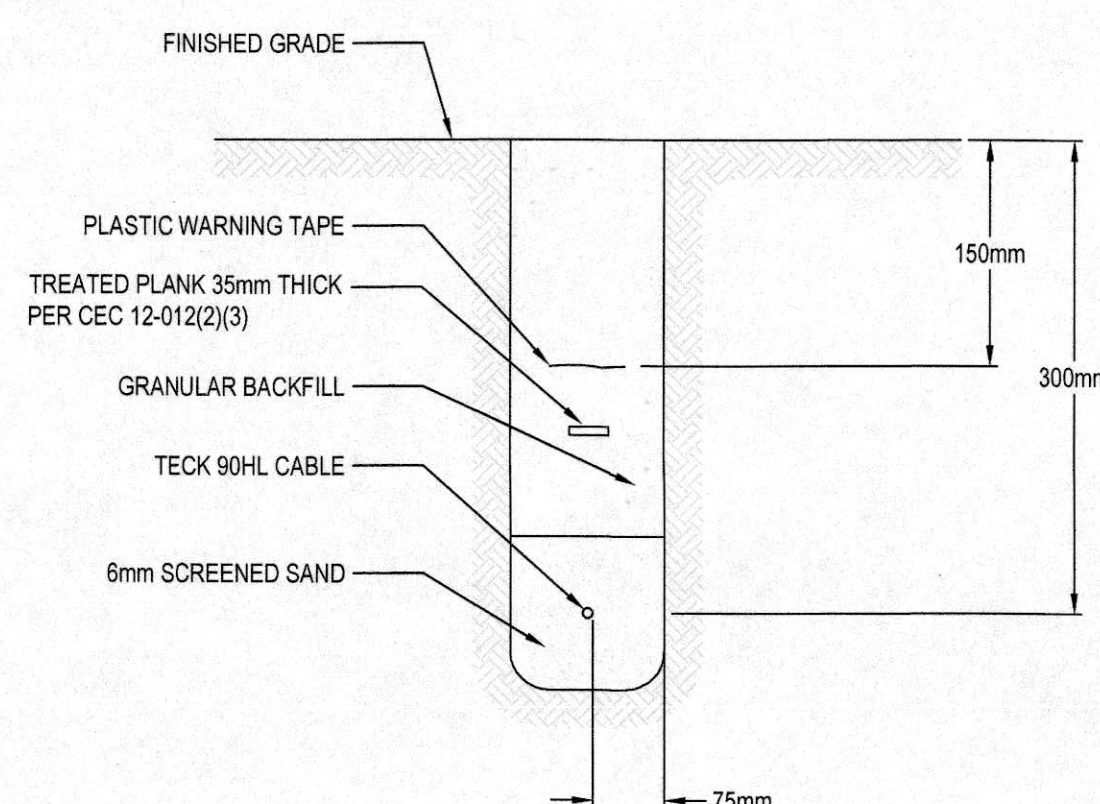
ELECTRICAL LEGEND	
	KEYNOTE
	CONNECTION POINT
	GROUND ROD
	MOTOR
	EMERGENCY STOP MUSHROOM TYPE
	UNDERGROUND CABLE
	EMERGENCY STOP MUSHROOM TYPE
	WALL MOUNTED FIXTURE
	PANEL BOARD
	GROUND
	WP WEATHER PROOF
	A.F.G. ABOVE FINISHED GROUND
	EX EXPLOSION PROOF



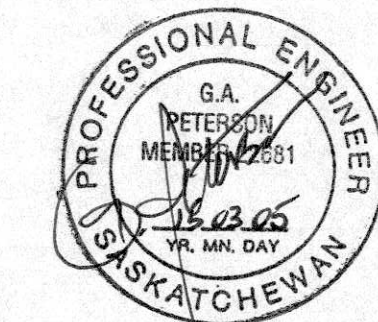
SINGLE LINE DIAGRAM
NTS



B GROUND CONDUCTOR BURIAL DETAIL
NTS



C CABLE BURIAL DETAIL
NTS



Revision/Revision	Description/Description	Date/Date
5		
4		
3		
2	ISSUED FOR TENDER	2015/02/27
1	ISSUED FOR 90% CLIENT REVIEW	2015/01/30
0	ISSUED FOR 50% CLIENT REVIEW	2014/12/22

Client/client

RCMP
PWGSC

Project Title/Titre du projet

RCMP SANDY BAY, SK

FUEL STORAGE AND
DISPENSING SYSTEM

Consultant Signature Box Only

Designed by/Concept par
DMH

Drawn by/Dessiné par
SG

PWGSC Project Manager/Administrateur de Projets TPSGC
Laura Barz

PWGSC Regional Manager, Architectural and Engineering Services/
Gestionnaire régionale, Services d'architecture et de génie, TPSGC

Drawing Title/Titre du dessin

ELECTRICAL

Project No./No. du projet
R.073302.001

Sheet/Fauille
E101
3 OF 3

Revision no./
La Révision
no.
2