



**RETURN BIDS TO:**

**RETOURNER LES SOUMISSIONS À:**

**Bid Receiving - PWGSC / Réception des soumissions  
- TPSGC**

**11 Laurier St. / 11, rue Laurier**

**Place du Portage, Phase III**

**Core 0B2 / Noyau 0B2**

**Gatineau, Québec K1A 0S5**

**Bid Fax: (819) 997-9776**

**SOLICITATION AMENDMENT  
MODIFICATION DE L'INVITATION**

The referenced document is hereby revised; unless otherwise indicated, all other terms and conditions of the Solicitation remain the same.

Ce document est par la présente révisé; sauf indication contraire, les modalités de l'invitation demeurent les mêmes.

**Comments - Commentaires**

**Vendor/Firm Name and Address**

**Raison sociale et adresse du  
fournisseur/de l'entrepreneur**

**Issuing Office - Bureau de distribution**

Electrical & Electronics Products Division  
11 Laurier St./11, rue Laurier  
7B3, Place du Portage, Phase III  
Gatineau, Québec K1A 0S5

<b>Title - Sujet</b> MOTOR, ALTERNATING CURRENT	
<b>Solicitation No. - N° de l'invitation</b> W8482-178512/A	<b>Amendment No. - N° modif.</b> 002
<b>Client Reference No. - N° de référence du client</b> W8482-178512	<b>Date</b> 2016-06-14
<b>GETS Reference No. - N° de référence de SEAG</b> PW-\$\$HN-324-71003	
<b>File No. - N° de dossier</b> hn324.W8482-178512	<b>CCC No./N° CCC - FMS No./N° VME</b>
<b>Solicitation Closes - L'invitation prend fin at - à 02:00 PM on - le 2016-07-05</b>	<b>Time Zone</b> Fuseau horaire Eastern Daylight Saving Time EDT
<b>F.O.B. - F.A.B.</b> <b>Plant-Usine:</b> <input type="checkbox"/> <b>Destination:</b> <input checked="" type="checkbox"/> <b>Other-Autre:</b> <input type="checkbox"/>	
<b>Address Enquiries to: - Adresser toutes questions à:</b> Theriault, Joelle	<b>Buyer Id - Id de l'acheteur</b> hn324
<b>Telephone No. - N° de téléphone</b> (819) 956-3484 ( )	<b>FAX No. - N° de FAX</b> (819) 953-4944
<b>Destination - of Goods, Services, and Construction:</b> <b>Destination - des biens, services et construction:</b>	

**Instructions: See Herein**

**Instructions: Voir aux présentes**

<b>Delivery Required - Livraison exigée</b>	<b>Delivery Offered - Livraison proposée</b>
<b>Vendor/Firm Name and Address</b> <b>Raison sociale et adresse du fournisseur/de l'entrepreneur</b>	
<b>Telephone No. - N° de téléphone</b> <b>Facsimile No. - N° de télécopieur</b>	
<b>Name and title of person authorized to sign on behalf of Vendor/Firm</b> <b>(type or print)</b> <b>Nom et titre de la personne autorisée à signer au nom du fournisseur/ de l'entrepreneur (taper ou écrire en caractères d'imprimerie)</b>	
<b>Signature</b>	<b>Date</b>

Solicitation No. - N° de l'invitation  
W8482-178512/A  
Client Ref. No. - N° de réf. du client  
W8482-178512

Amd. No. - N° de la modif.  
002  
File No. - N° du dossier  
hn324. W8482-178512

Buyer ID - Id de l'acheteur  
hn324  
CCC No./N° CCC - FMS No./N° VME

Amendment 002 is issued to address the following:

- 1) To answer questions

1) **At Q&As:**

**Insert:**

Q1. Please provide name plate information. Also, what is the application?

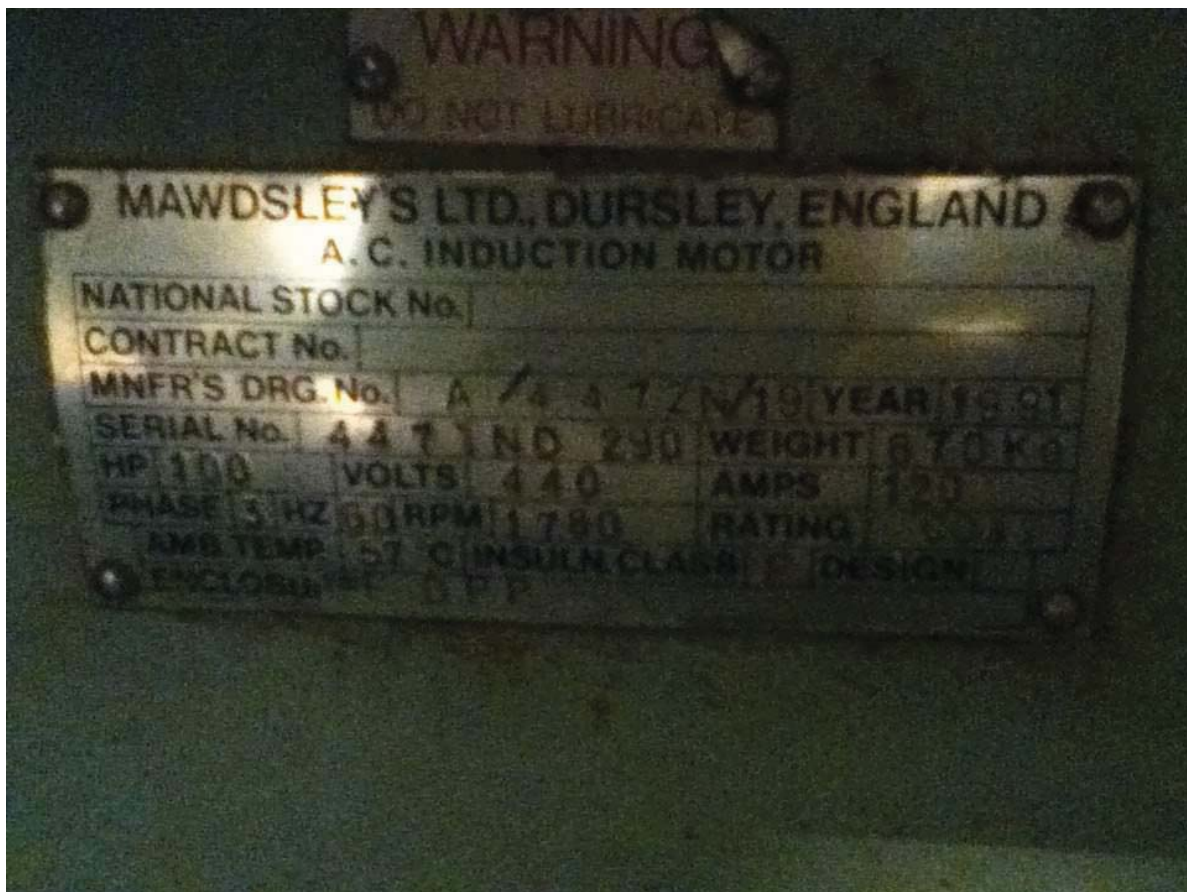
A1. Name plate data attached. Application is main motor ships steering system.

Q2. Could you please provide a copy of the existing motor outline drawing and specs (to determine if the motor has any added features such as winding temperature protection, thermistors, RTD's or Klixons)?

A2. Motor drawing and spec attached.

Q3. Could you please provide a photo of these motors and the rating plate?

A3. No motor photo available. Rating plate attached.

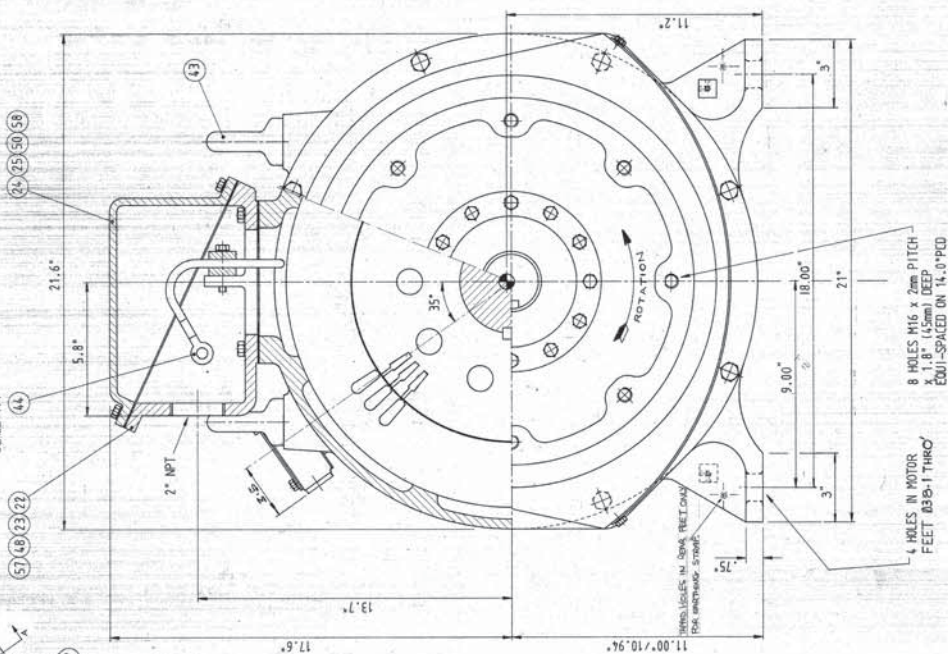


**ALL OTHER TERMS AND CONDITIONS REMAIN UNCHANGED**



NO.	REV.	DESCRIPTION	DATE	BY	CHKD.
1		ISSUED FOR CONSTRUCTION	17/1/50		
2		REVISION DATA, ADDED	17/1/50		
3		REVISION DATA, ADDED	17/1/50		
4		REVISION DATA, ADDED	17/1/50		
5		REVISION DATA, ADDED	17/1/50		
6		REVISION DATA, ADDED	17/1/50		
7		REVISION DATA, ADDED	17/1/50		
8		REVISION DATA, ADDED	17/1/50		
9		REVISION DATA, ADDED	17/1/50		
10		REVISION DATA, ADDED	17/1/50		
11		REVISION DATA, ADDED	17/1/50		
12		REVISION DATA, ADDED	17/1/50		
13		REVISION DATA, ADDED	17/1/50		
14		REVISION DATA, ADDED	17/1/50		
15		REVISION DATA, ADDED	17/1/50		
16		REVISION DATA, ADDED	17/1/50		
17		REVISION DATA, ADDED	17/1/50		
18		REVISION DATA, ADDED	17/1/50		
19		REVISION DATA, ADDED	17/1/50		
20		REVISION DATA, ADDED	17/1/50		
21		REVISION DATA, ADDED	17/1/50		
22		REVISION DATA, ADDED	17/1/50		
23		REVISION DATA, ADDED	17/1/50		
24		REVISION DATA, ADDED	17/1/50		
25		REVISION DATA, ADDED	17/1/50		
26		REVISION DATA, ADDED	17/1/50		
27		REVISION DATA, ADDED	17/1/50		
28		REVISION DATA, ADDED	17/1/50		
29		REVISION DATA, ADDED	17/1/50		
30		REVISION DATA, ADDED	17/1/50		
31		REVISION DATA, ADDED	17/1/50		
32		REVISION DATA, ADDED	17/1/50		
33		REVISION DATA, ADDED	17/1/50		
34		REVISION DATA, ADDED	17/1/50		
35		REVISION DATA, ADDED	17/1/50		
36		REVISION DATA, ADDED	17/1/50		
37		REVISION DATA, ADDED	17/1/50		
38		REVISION DATA, ADDED	17/1/50		
39		REVISION DATA, ADDED	17/1/50		
40		REVISION DATA, ADDED	17/1/50		
41		REVISION DATA, ADDED	17/1/50		
42		REVISION DATA, ADDED	17/1/50		
43		REVISION DATA, ADDED	17/1/50		
44		REVISION DATA, ADDED	17/1/50		
45		REVISION DATA, ADDED	17/1/50		
46		REVISION DATA, ADDED	17/1/50		
47		REVISION DATA, ADDED	17/1/50		
48		REVISION DATA, ADDED	17/1/50		
49		REVISION DATA, ADDED	17/1/50		
50		REVISION DATA, ADDED	17/1/50		
51		REVISION DATA, ADDED	17/1/50		
52		REVISION DATA, ADDED	17/1/50		
53		REVISION DATA, ADDED	17/1/50		
54		REVISION DATA, ADDED	17/1/50		
55		REVISION DATA, ADDED	17/1/50		
56		REVISION DATA, ADDED	17/1/50		
57		REVISION DATA, ADDED	17/1/50		
58		REVISION DATA, ADDED	17/1/50		
59		REVISION DATA, ADDED	17/1/50		
60		REVISION DATA, ADDED	17/1/50		
61		REVISION DATA, ADDED	17/1/50		
62		REVISION DATA, ADDED	17/1/50		
63		REVISION DATA, ADDED	17/1/50		
64		REVISION DATA, ADDED	17/1/50		
65		REVISION DATA, ADDED	17/1/50		
66		REVISION DATA, ADDED	17/1/50		
67		REVISION DATA, ADDED	17/1/50		
68		REVISION DATA, ADDED	17/1/50		
69		REVISION DATA, ADDED	17/1/50		
70		REVISION DATA, ADDED	17/1/50		
71		REVISION DATA, ADDED	17/1/50		
72		REVISION DATA, ADDED	17/1/50		
73		REVISION DATA, ADDED	17/1/50		
74		REVISION DATA, ADDED	17/1/50		
75		REVISION DATA, ADDED	17/1/50		
76		REVISION DATA, ADDED	17/1/50		
77		REVISION DATA, ADDED	17/1/50		
78		REVISION DATA, ADDED	17/1/50		
79		REVISION DATA, ADDED	17/1/50		
80		REVISION DATA, ADDED	17/1/50		
81		REVISION DATA, ADDED	17/1/50		
82		REVISION DATA, ADDED	17/1/50		
83		REVISION DATA, ADDED	17/1/50		
84		REVISION DATA, ADDED	17/1/50		
85		REVISION DATA, ADDED	17/1/50		
86		REVISION DATA, ADDED	17/1/50		
87		REVISION DATA, ADDED	17/1/50		
88		REVISION DATA, ADDED	17/1/50		
89		REVISION DATA, ADDED	17/1/50		
90		REVISION DATA, ADDED	17/1/50		
91		REVISION DATA, ADDED	17/1/50		
92		REVISION DATA, ADDED	17/1/50		
93		REVISION DATA, ADDED	17/1/50		
94		REVISION DATA, ADDED	17/1/50		
95		REVISION DATA, ADDED	17/1/50		
96		REVISION DATA, ADDED	17/1/50		
97		REVISION DATA, ADDED	17/1/50		
98		REVISION DATA, ADDED	17/1/50		
99		REVISION DATA, ADDED	17/1/50		
100		REVISION DATA, ADDED	17/1/50		

# SECTION THROUGH HEATER TERMINAL BOX SCALE 1:1



FOR PARTS LIST SEE SHEET 2  
FOR DETAIL OF SHAFT (ITEM 5)  
SEE SHEET 2

CENTRE OF GRAVITY

MAWDSLEY'S LIMITED  
DURSLEY, GLOS., ENGLAND  
MOTOR A.C.

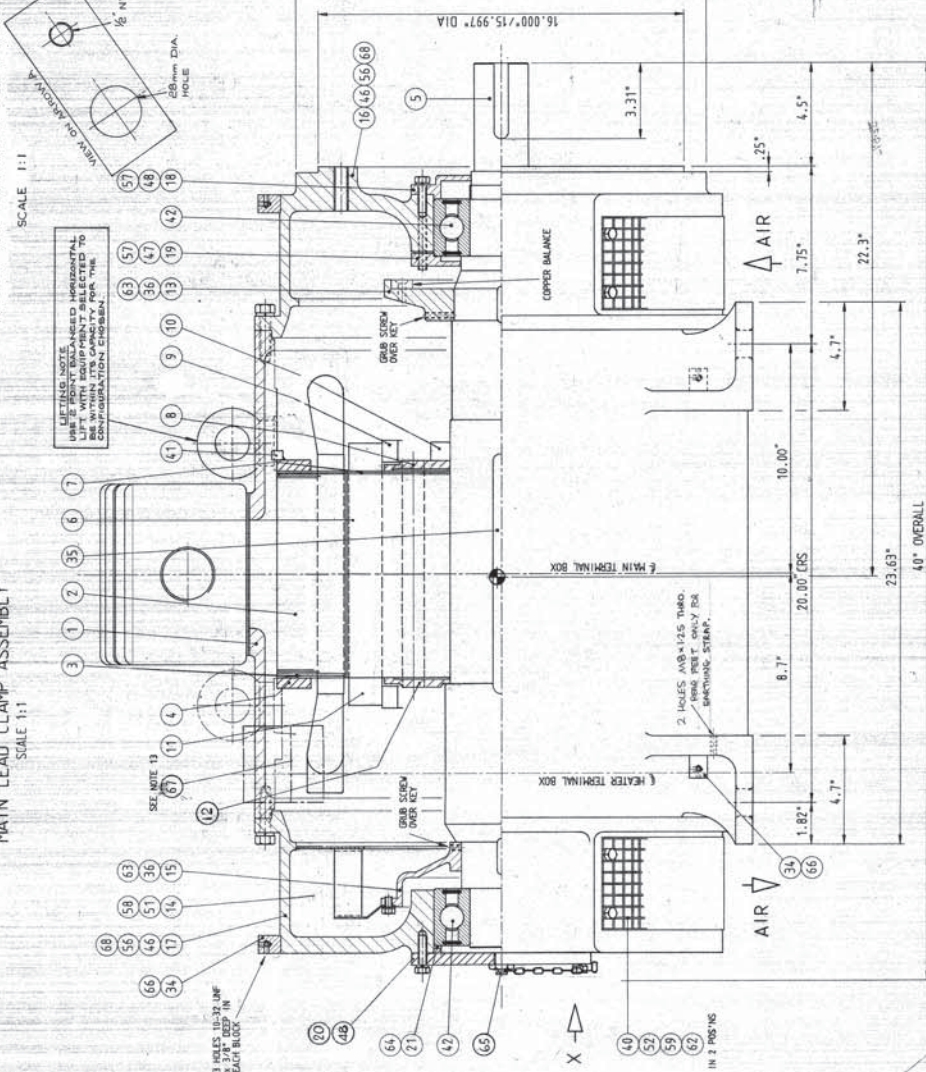
A/447TND/19

## ALTERNATING CURRENT MOTORS

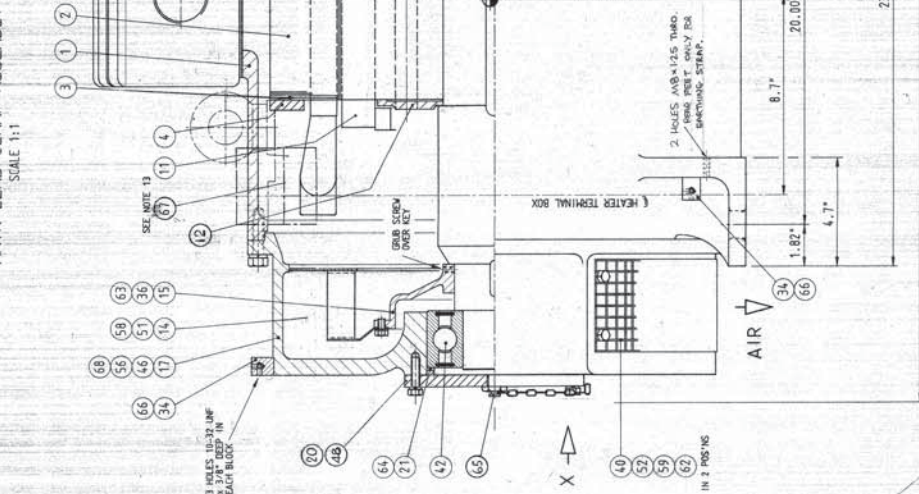
WPS. TYPE B CLASS K INDUCTION  
FRAME SIZE A47TND DUTY CONTINUOUS  
DEGREE OF ENCLOSURE DUTY PROOF FL 1700  
INSULATION CLASS F MOUNTING HORIZONTAL  
TOLERANCE CLASS C CURRENT CLASS DESIGN C  
PERMISSIBLE AMBIENT TEMPERATURE 40°C  
NAVY SERVICE A SURFACE SHIP

NOTE: THIS CALCULATED VALUE OF FULL-LOAD  
CURRENT IS FOR SELECTING THE DISTRIBUTION SYSTEM  
COMPONENTS AND OVERLOAD RELAYS OR  
RELAYS.

## HEATER AND THERMISTOR CLAMP ASSY. SCALE 1:1



## MAIN LEAD CLAMP ASSEMBLY SCALE 1:1



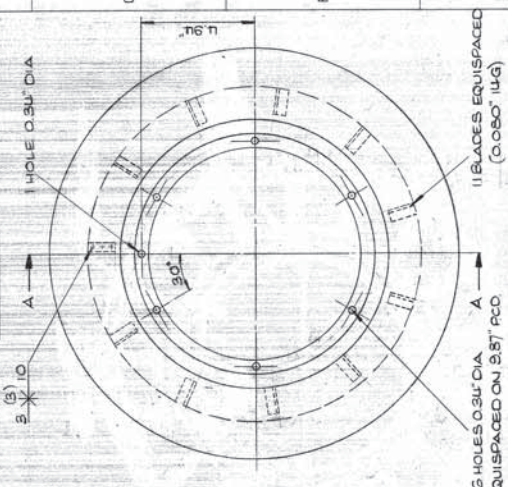
## ALTERNATING CURRENT MOTORS

WPS. TYPE B CLASS K INDUCTION  
FRAME SIZE A47TND DUTY CONTINUOUS  
DEGREE OF ENCLOSURE DUTY PROOF FL 1700  
INSULATION CLASS F MOUNTING HORIZONTAL  
TOLERANCE CLASS C CURRENT CLASS DESIGN C  
PERMISSIBLE AMBIENT TEMPERATURE 40°C  
NAVY SERVICE A SURFACE SHIP

NOTE: THIS CALCULATED VALUE OF FULL-LOAD  
CURRENT IS FOR SELECTING THE DISTRIBUTION SYSTEM  
COMPONENTS AND OVERLOAD RELAYS OR  
RELAYS.



1	INITIAL USE	DATE	BY
2	TEST DATA ADDED	DATE	BY
3	REVISIONS	DATE	BY
4	REVISIONS	DATE	BY
5	REVISIONS	DATE	BY
6	REVISIONS	DATE	BY
7	REVISIONS	DATE	BY
8	REVISIONS	DATE	BY
9	REVISIONS	DATE	BY
10	REVISIONS	DATE	BY



SECTION A-A

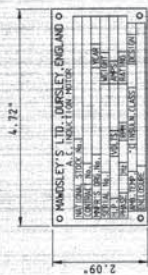
INTERNAL FAN DETAIL - ITEM 14

SCALE 1:2

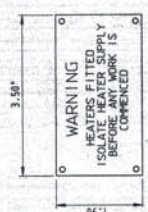
- NOTES:
1. BEARINGS CONFORM TO SPEC. MIL-B-1793 TYPE 120
  2. BEARING HOUSING BORE D.E. 5.9055" ± 0.002"
  3. BEARING HOUSING BORE N.D.E. 5.9055" ± 0.002"
  4. BEARING CAP SHOULDER DIA. D.E. 5.28"
  5. BEARING CAP SHOULDER DIA. N.D.E. 5.28" OUTSIDE CAP
  6. D.E. BEARING IS CLAMPED. AXIAL EXPOSURE IS RESTRICTED TO THE BEARING INTERNAL CLEARANCE.
  7. BEARINGS PRE-LUBRICATED WITH GREASE TO DOD-G-24588 AND MUST NOT BE RE-LUBRICATED.
  8. TO REMOVE BEARINGS USE PULLER NO. 08290 BEARING PULLER.
  9. FIT OF STATOR CORE PACK IN FRAME SIZE TO .0025" CLEAR. STATOR CORE WELDED AND KEPT TO FRAME TO PREVENT INDEPENDENTIAL AND AXIAL MOTION.
  10. MOTOR ASSEMBLY WEIGHT 500 LB. MAX. 66" 19.1".
  11. FIT OF MOTOR COREPACKS ON SHAFT. SIZE TO .0014" CLEAR. FIT OF MOTOR COREPACKS ON SHAFT. SIZE TO .0014" CLEAR. FIT OF MOTOR COREPACKS ON SHAFT. SIZE TO .0014" CLEAR.
  12. MOTOR SHAFT N.D. STAMPED ON FRAME UNDER RATING PLATE. REFERENCE SPEC. 0-23-083-105-25-401 CODE 20.
  13. 1. WEATHER PROTECTED ON STATOR WINDING OUTINGS AT EACH END OF CORE.

DATE	BY	REVISION
1	1	1
2	2	2
3	3	3
4	4	4
5	5	5
6	6	6
7	7	7
8	8	8
9	9	9
10	10	10

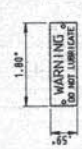
BEARING REPLACEMENT			
BEARINGS OF THE FOLLOWING DESIGNATIONS MAY BE USED	BATCH NO.	FRONT END	REAR END
MIL-STD. CODE NO. 6331 ALLBPM	MIL-4719310 TYPE 120	SIZE 6331 ALLBPM	SIZE 6331 ALLBPM
MANUFACTURER	N.T.N.	N.T.N.	N.T.N.



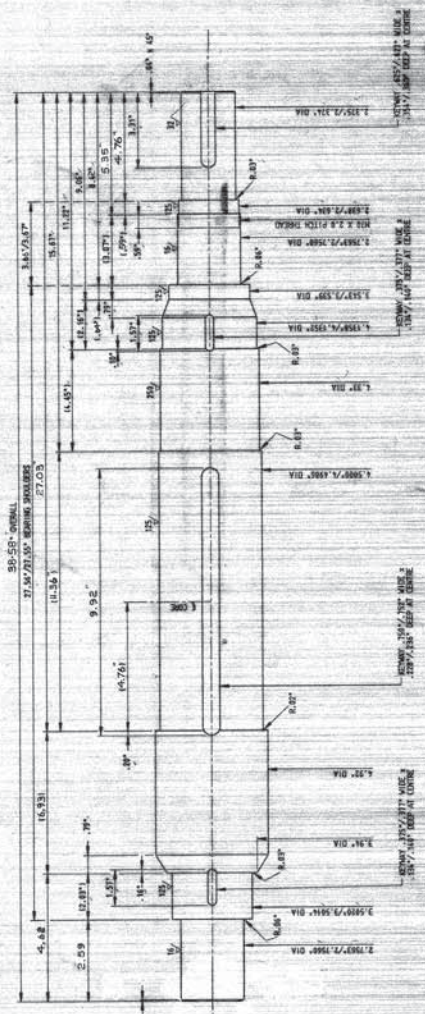
DETAIL OF ITEM 37



DETAIL OF ITEM 38



DETAIL OF ITEM 39



DETAIL OF SHAFT (ITEM 5)

SURFACE ROUGHNESS ✓ INDICATES MICRO INCHES

ITEM NO.	DESCRIPTION	QUANTITY	UNIT	REMARKS
1	BEARING HOUSING BORE D.E. 5.9055" ± 0.002"	1	PC	
2	BEARING HOUSING BORE N.D.E. 5.9055" ± 0.002"	1	PC	
3	BEARING CAP SHOULDER DIA. D.E. 5.28"	1	PC	
4	BEARING CAP SHOULDER DIA. N.D.E. 5.28" OUTSIDE CAP	1	PC	
5	D.E. BEARING IS CLAMPED. AXIAL EXPOSURE IS RESTRICTED TO THE BEARING INTERNAL CLEARANCE.	1	PC	
6	BEARINGS PRE-LUBRICATED WITH GREASE TO DOD-G-24588 AND MUST NOT BE RE-LUBRICATED.	1	PC	
7	TO REMOVE BEARINGS USE PULLER NO. 08290 BEARING PULLER.	1	PC	
8	FIT OF STATOR CORE PACK IN FRAME SIZE TO .0025" CLEAR. STATOR CORE WELDED AND KEPT TO FRAME TO PREVENT INDEPENDENTIAL AND AXIAL MOTION.	1	PC	
9	MOTOR ASSEMBLY WEIGHT 500 LB. MAX. 66" 19.1".	1	PC	
10	FIT OF MOTOR COREPACKS ON SHAFT. SIZE TO .0014" CLEAR. FIT OF MOTOR COREPACKS ON SHAFT. SIZE TO .0014" CLEAR.	1	PC	
11	MOTOR SHAFT N.D. STAMPED ON FRAME UNDER RATING PLATE. REFERENCE SPEC. 0-23-083-105-25-401 CODE 20.	1	PC	
12	1. WEATHER PROTECTED ON STATOR WINDING OUTINGS AT EACH END OF CORE.	1	PC	



GUARANTEED PERFORMANCE AT RATED VOLTAGE AND FREQUENCY		
LOAD	EFFICIENCY	POWER FACTOR
PULL	98.5%	0.95
50% TORQUE	98.0%	0.95
100% TORQUE	97.0%	0.95
175% TORQUE	96.0%	0.95

LOCKED-ROTOR TORQUE FACTOR	2.8
LOCKED-ROTOR CURRENT	7.5 AMP
LOCKED-ROTOR TORQUE	110% OF FLT
PULL-UP TORQUE	100% OF FLT
BREAKDOWN TORQUE	200% OF FLT

STATOR DIAMETER INSIDE IS 15.67 IN. CORE LENGTH 18.50 IN. ROTOR DIA. 10.12 IN. 12.25 IN. NO. OF BARS 36 BAR PATT. L. COPPER

SPECIFICATIONS AND EXCEPTIONS	
THE MOTOR DESCRIBED ON THIS DRAWING IS IN ACCORDANCE WITH THE FOLLOWING EXCEPTIONS:	
1. TYPE A	
2. TYPE B	
3. TYPE C	
4. TYPE D	
5. TYPE E	
6. TYPE F	
7. TYPE G	
8. TYPE H	
9. TYPE I	
10. TYPE J	
11. TYPE K	
12. TYPE L	
13. TYPE M	
14. TYPE N	
15. TYPE O	
16. TYPE P	
17. TYPE Q	
18. TYPE R	
19. TYPE S	
20. TYPE T	
21. TYPE U	
22. TYPE V	
23. TYPE W	
24. TYPE X	
25. TYPE Y	
26. TYPE Z	

STATOR DIAMETER INSIDE IS 15.67 IN. CORE LENGTH 18.50 IN. ROTOR DIA. 10.12 IN. 12.25 IN. NO. OF BARS 36 BAR PATT. L. COPPER

SPECIFICATIONS AND EXCEPTIONS	
THE MOTOR DESCRIBED ON THIS DRAWING IS IN ACCORDANCE WITH THE FOLLOWING EXCEPTIONS:	
1. TYPE A	
2. TYPE B	
3. TYPE C	
4. TYPE D	
5. TYPE E	
6. TYPE F	
7. TYPE G	
8. TYPE H	
9. TYPE I	
10. TYPE J	
11. TYPE K	
12. TYPE L	
13. TYPE M	
14. TYPE N	
15. TYPE O	
16. TYPE P	
17. TYPE Q	
18. TYPE R	
19. TYPE S	
20. TYPE T	
21. TYPE U	
22. TYPE V	
23. TYPE W	
24. TYPE X	
25. TYPE Y	
26. TYPE Z	

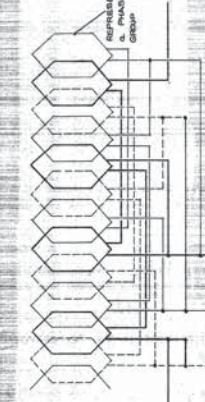
STATOR DIAMETER INSIDE IS 15.67 IN. CORE LENGTH 18.50 IN. ROTOR DIA. 10.12 IN. 12.25 IN. NO. OF BARS 36 BAR PATT. L. COPPER

SPECIFICATIONS AND EXCEPTIONS	
THE MOTOR DESCRIBED ON THIS DRAWING IS IN ACCORDANCE WITH THE FOLLOWING EXCEPTIONS:	
1. TYPE A	
2. TYPE B	
3. TYPE C	
4. TYPE D	
5. TYPE E	
6. TYPE F	
7. TYPE G	
8. TYPE H	
9. TYPE I	
10. TYPE J	
11. TYPE K	
12. TYPE L	
13. TYPE M	
14. TYPE N	
15. TYPE O	
16. TYPE P	
17. TYPE Q	
18. TYPE R	
19. TYPE S	
20. TYPE T	
21. TYPE U	
22. TYPE V	
23. TYPE W	
24. TYPE X	
25. TYPE Y	
26. TYPE Z	

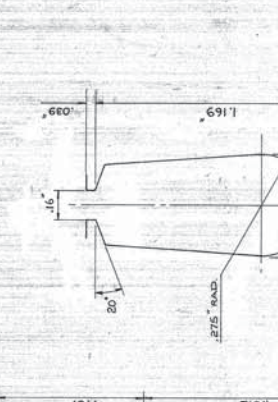
STATOR DIAMETER INSIDE IS 15.67 IN. CORE LENGTH 18.50 IN. ROTOR DIA. 10.12 IN. 12.25 IN. NO. OF BARS 36 BAR PATT. L. COPPER

SPECIFICATIONS AND EXCEPTIONS	
THE MOTOR DESCRIBED ON THIS DRAWING IS IN ACCORDANCE WITH THE FOLLOWING EXCEPTIONS:	
1. TYPE A	
2. TYPE B	
3. TYPE C	
4. TYPE D	
5. TYPE E	
6. TYPE F	
7. TYPE G	
8. TYPE H	
9. TYPE I	
10. TYPE J	
11. TYPE K	
12. TYPE L	
13. TYPE M	
14. TYPE N	
15. TYPE O	
16. TYPE P	
17. TYPE Q	
18. TYPE R	
19. TYPE S	
20. TYPE T	
21. TYPE U	
22. TYPE V	
23. TYPE W	
24. TYPE X	
25. TYPE Y	
26. TYPE Z	

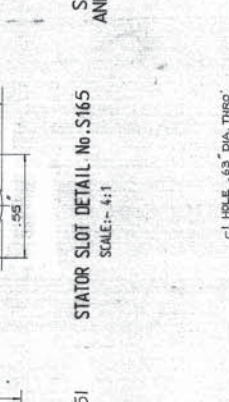
STATOR DIAMETER INSIDE IS 15.67 IN. CORE LENGTH 18.50 IN. ROTOR DIA. 10.12 IN. 12.25 IN. NO. OF BARS 36 BAR PATT. L. COPPER



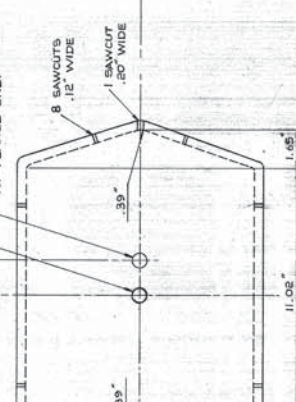
48 SLOT D.L.L. 3 PHASE 4 POLE WINDING  
2 PARALLEL PATHS



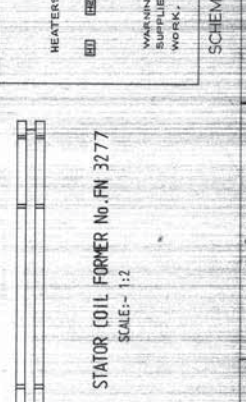
STATOR SLOT DETAIL No. S165  
SCALE: 4:1



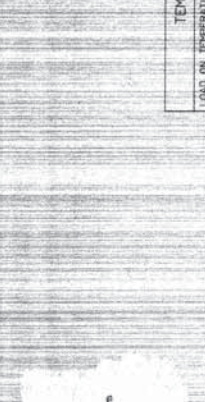
ROTOR SLOT DETAIL No. R 451  
SCALE: 4:1



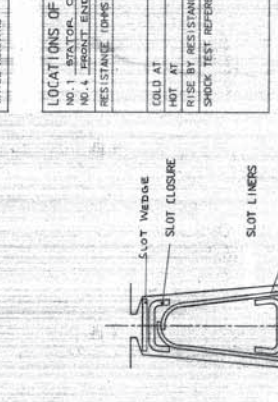
STATOR COIL FORMER No. FN 3277  
SCALE: 1:2



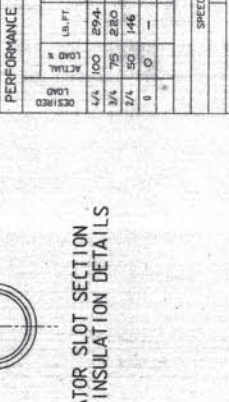
STATOR SLOT SECTION  
AND INSULATION DETAILS



STATOR SLOT SECTION  
AND INSULATION DETAILS



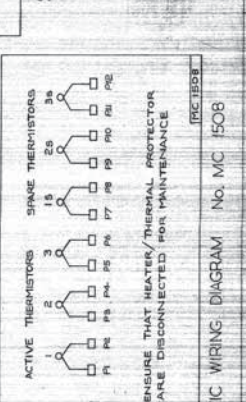
STATOR SLOT SECTION  
AND INSULATION DETAILS



STATOR SLOT SECTION  
AND INSULATION DETAILS



STATOR SLOT SECTION  
AND INSULATION DETAILS



STATOR SLOT SECTION  
AND INSULATION DETAILS

TEMPERATURE RISE DATA - DEGREES CENT GRADE	
LOAD ON TEMPERATURE RISE	100 LOAD 4.5 HRS. 11.5 HRS.
LENGTH OF TEMPERATURE RISE	100 LOAD 4.5 HRS. 11.5 HRS.
TEMPERATURE RISE	100 LOAD 4.5 HRS. 11.5 HRS.
1 HOUR BEFORE SHUTDOWN	100 LOAD 4.5 HRS. 11.5 HRS.
FINAL WHILE RUNNING	100 LOAD 4.5 HRS. 11.5 HRS.

TEMPERATURE RISE DATA - DEGREES CENT GRADE	
LOAD ON TEMPERATURE RISE	100 LOAD 4.5 HRS. 11.5 HRS.
LENGTH OF TEMPERATURE RISE	100 LOAD 4.5 HRS. 11.5 HRS.
TEMPERATURE RISE	100 LOAD 4.5 HRS. 11.5 HRS.
1 HOUR BEFORE SHUTDOWN	100 LOAD 4.5 HRS. 11.5 HRS.
FINAL WHILE RUNNING	100 LOAD 4.5 HRS. 11.5 HRS.

TEMPERATURE RISE DATA - DEGREES CENT GRADE	
LOAD ON TEMPERATURE RISE	100 LOAD 4.5 HRS. 11.5 HRS.
LENGTH OF TEMPERATURE RISE	100 LOAD 4.5 HRS. 11.5 HRS.
TEMPERATURE RISE	100 LOAD 4.5 HRS. 11.5 HRS.
1 HOUR BEFORE SHUTDOWN	100 LOAD 4.5 HRS. 11.5 HRS.
FINAL WHILE RUNNING	100 LOAD 4.5 HRS. 11.5 HRS.

TEMPERATURE RISE DATA - DEGREES CENT GRADE	
LOAD ON TEMPERATURE RISE	100 LOAD 4.5 HRS. 11.5 HRS.
LENGTH OF TEMPERATURE RISE	100 LOAD 4.5 HRS. 11.5 HRS.
TEMPERATURE RISE	100 LOAD 4.5 HRS. 11.5 HRS.
1 HOUR BEFORE SHUTDOWN	100 LOAD 4.5 HRS. 11.5 HRS.
FINAL WHILE RUNNING	100 LOAD 4.5 HRS. 11.5 HRS.

TEMPERATURE RISE DATA - DEGREES CENT GRADE	
LOAD ON TEMPERATURE RISE	100 LOAD 4.5 HRS. 11.5 HRS.
LENGTH OF TEMPERATURE RISE	100 LOAD 4.5 HRS. 11.5 HRS.
TEMPERATURE RISE	100 LOAD 4.5 HRS. 11.5 HRS.
1 HOUR BEFORE SHUTDOWN	100 LOAD 4.5 HRS. 11.5 HRS.
FINAL WHILE RUNNING	100 LOAD 4.5 HRS. 11.5 HRS.

TEMPERATURE RISE DATA - DEGREES CENT GRADE	
LOAD ON TEMPERATURE RISE	100 LOAD 4.5 HRS. 11.5 HRS.
LENGTH OF TEMPERATURE RISE	100 LOAD 4.5 HRS. 11.5 HRS.
TEMPERATURE RISE	100 LOAD 4.5 HRS. 11.5 HRS.
1 HOUR BEFORE SHUTDOWN	100 LOAD 4.5 HRS. 11.5 HRS.
FINAL WHILE RUNNING	100 LOAD 4.5 HRS. 11.5 HRS.

TEMPERATURE RISE DATA - DEGREES CENT GRADE	
LOAD ON TEMPERATURE RISE	100 LOAD 4.5 HRS. 11.5 HRS.
LENGTH OF TEMPERATURE RISE	100 LOAD 4.5 HRS. 11.5 HRS.
TEMPERATURE RISE	100 LOAD 4.5 HRS. 11.5 HRS.
1 HOUR BEFORE SHUTDOWN	100 LOAD 4.5 HRS. 11.5 HRS.
FINAL WHILE RUNNING	100 LOAD 4.5 HRS. 11.5 HRS.

TEMPERATURE RISE DATA - DEGREES CENT GRADE	
LOAD ON TEMPERATURE RISE	100 LOAD 4.5 HRS. 11.5 HRS.
LENGTH OF TEMPERATURE RISE	100 LOAD 4.5 HRS. 11.5 HRS.
TEMPERATURE RISE	100 LOAD 4.5 HRS. 11.5 HRS.
1 HOUR BEFORE SHUTDOWN	100 LOAD 4.5 HRS. 11.5 HRS.
FINAL WHILE RUNNING	100 LOAD 4.5 HRS. 11.5 HRS.

TEMPERATURE RISE DATA - DEGREES CENT GRADE	
LOAD ON TEMPERATURE RISE	100 LOAD 4.5 HRS. 11.5 HRS.
LENGTH OF TEMPERATURE RISE	100 LOAD 4.5 HRS. 11.5 HRS.
TEMPERATURE RISE	100 LOAD 4.5 HRS. 11.5 HRS.
1 HOUR BEFORE SHUTDOWN	100 LOAD 4.5 HRS. 11.5 HRS.
FINAL WHILE RUNNING	100 LOAD 4.5 HRS. 11.5 HRS.

TEMPERATURE RISE DATA - DEGREES CENT GRADE	
LOAD ON TEMPERATURE RISE	100 LOAD 4.5 HRS. 11.5 HRS.
LENGTH OF TEMPERATURE RISE	100 LOAD 4.5 HRS. 11.5 HRS.
TEMPERATURE RISE	100 LOAD 4.5 HRS. 11.5 HRS.
1 HOUR BEFORE SHUTDOWN	100 LOAD 4.5 HRS. 11.5 HRS.
FINAL WHILE RUNNING	100 LOAD 4.5 HRS. 11.5 HRS.

TEMPERATURE RISE DATA - DEGREES CENT GRADE	
LOAD ON TEMPERATURE RISE	100 LOAD 4.5 HRS. 11.5 HRS.
LENGTH OF TEMPERATURE RISE	100 LOAD 4.5 HRS. 11.5 HRS.
TEMPERATURE RISE	100 LOAD 4.5 HRS. 11.5 HRS.
1 HOUR BEFORE SHUTDOWN	100 LOAD 4.5 HRS. 11.5 HRS.
FINAL WHILE RUNNING	100 LOAD 4.5 HRS. 11.5 HRS.

TEMPERATURE RISE DATA - DEGREES CENT GRADE	
LOAD ON TEMPERATURE RISE	100 LOAD 4.5 HRS. 11.5 HRS.
LENGTH OF TEMPERATURE RISE	100 LOAD 4.5 HRS. 11.5 HRS.
TEMPERATURE RISE	100 LOAD 4.5 HRS. 11.5 HRS.
1 HOUR BEFORE SHUTDOWN	100 LOAD 4.5 HRS. 11.5 HRS.
FINAL WHILE RUNNING	100 LOAD 4.5 HRS. 11.5 HRS.

TEMPERATURE RISE DATA - DEGREES CENT GRADE	
LOAD ON TEMPERATURE RISE	100 LOAD 4.5 HRS. 11.5 HRS.
LENGTH OF TEMPERATURE RISE	100 LOAD 4.5 HRS. 11.5 HRS.
TEMPERATURE RISE	100 LOAD 4.5 HRS. 11.5 HRS.
1 HOUR BEFORE SHUTDOWN	100 LOAD 4.5 HRS. 11.5 HRS.
FINAL WHILE RUNNING	100 LOAD 4.5 HRS. 11.5 HRS.

TEMPERATURE RISE DATA - DEGREES CENT GRADE	
LOAD ON TEMPERATURE RISE	100 LOAD 4.5 HRS. 11.5 HRS.
LENGTH OF TEMPERATURE RISE	100 LOAD 4.5 HRS. 11.5 HRS.
TEMPERATURE RISE	100 LOAD 4.5 HRS. 11.5 HRS.
1 HOUR BEFORE SHUTDOWN	100 LOAD 4.5 HRS. 11.5 HRS.
FINAL WHILE RUNNING	100 LOAD 4.5 HRS. 11.5 HRS.