

REFER TO CECO SHOP DRAWING #CE45R14/CE45R20 FOR SIDE-MOUNT BRACKET DETAILS. (TYP. OF 3)

125mm RIGID PVC DUCT TO STUB AT TOP OF APPROACH, UNDER DECKING

200A 600/347V SERVICE DROP TO PANEL & UTILITY METER

GUY WIRE & ANCHOR

NEW BC HYDRO TRANSFORMER ON EXISTING POLE

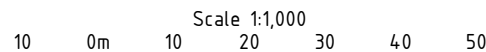
200A CENTRAL DISTRIBUTION PANEL (CDP)

SITE PLAN SYMBOL LEGEND

- LP-1 LUMINAIRE c/w POLE. LP-# DENOTES ID. REFER TO LUMINAIRE SCHEDULE.
- LP-A LUMINAIRE TYPE. REFER TO LUMINAIRE SCHEDULE.
- RC-3 POWER RECEPTACLE CABINET (RC) w/ LED CANOPY LIGHT c/w FOUR (4) 15A RECEPTACLES & FOUR (4) 30A RECEPTACLES
- TC-B TRANSFORMER CABINET (TC) w/ LED CANOPY LIGHT c/w FOUR (4) 15A RECEPTACLES & FOUR (4) 30A RECEPTACLES
- C-xx-x' CABLES FASTENED TO UNDERSIDE OF DECK STRUCTURE. TAG CABLES AT BOTH ENDS ACCORDING TO LABEL SHOWN

LUMINAIRE & POLE SCHEDULE

TYPE	POLE HEIGHT	POLE MFR & CATALOGUE NUMBER	LUMINAIRE DESCRIPTION	MFR.	MODEL	CATALOGUE NUMBER
A	14' c/w SIDE-MOUNT BRACKET	CECO #CE45R14	38W, 120-277V, DISTRIBUTION TYPE 2, 3000K LED, FIELD ADJUSTABLE WATTAGE SELECTOR (FAWS)	PHILIPS LUMEC	ROADFOCUS RFS	RFS-35W16LED3K-T-R2M-UNIV -DMG-FAWS-RCD-PH9-GY3
B	20' MOUNTED TO HORIZONTAL SURFACE OF DECK	CECO #CE45R20	54W, 120-277V, DISTRIBUTION TYPE 2, 3000K LED, FIELD ADJUSTABLE WATTAGE SELECTOR (FAWS)	PHILIPS LUMEC	ROADFOCUS RFS	RFS-54W16LED3K-T-R2M-UNIV -DMG-FAWS-RCD-PH9-GY3
C	14' MOUNTED TO HORIZONTAL SURFACE OF DECK	CECO #CE45R14	38W, 120-277V, DISTRIBUTION TYPE 2, 3000K LED, FIELD ADJUSTABLE WATTAGE SELECTOR (FAWS)	PHILIPS LUMEC	ROADFOCUS RFS	RFS-35W16LED3K-T-R2M-UNIV -DMG-FAWS-RCD-PH9-GY3



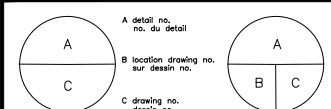
1 SITE PLAN

Scale: SCALE BAR

ISSUED FOR TENDER
DO NOT USE FOR CONSTRUCTION
Last Saved: May 9, 2016



D	ISSUED FOR TENDER	21 APR, 2016
C	ISSUED FOR REVIEW	08 APR, 2016
B	ISSUED FOR TENDER/CONSTRUCTION	30 MAR, 2016
A	ISSUED FOR REVIEW	24 MAR, 2016



project MARKTOSIS SCH FLORES ISLAND, BC ELECTRICAL UPGRADE

drawing SITE PLAN

designed ADAM BEHIELS concu

date FEBRUARY 2016

drown COLIN FAIR dessine

date FEBRUARY 2016

approved - approuve

date -

tender - Soumission

PWSGC Project Manager Administrateur de projets TPWSGC

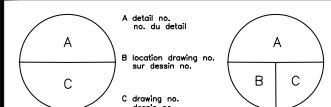
project no. F1571-147005 no. du projet

drawing no. E1 no. du dessin

ISSUED FOR TENDER
DO NOT USE FOR CONSTRUCTION
Last Saved: May 11, 2016



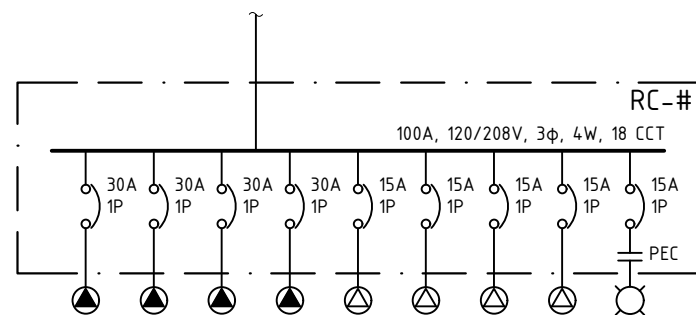
C	ISSUED FOR TENDER	21 APR. 2016
B	ISSUED FOR REVIEW	08 APR. 2016
A	ISSUED FOR REVIEW	24 MAR. 2016



project
MARKTOSIS SCH FLORES ISLAND, BC ELECTRICAL UPGRADE

drawing
SINGLE LINE DIAGRAM

designed	ADAM BEHIELS	concu
date	FEBRUARY 2016	
drawn	COLIN FAIR	dessin
date	FEBRUARY 2016	
approved		approuvé
date		
tender		Submission
PWOSC Project Manager	Administrateur de projets TPSCC	
project no.	F1571-147005	no. du projet
drawing no.	E2	no. du dessin



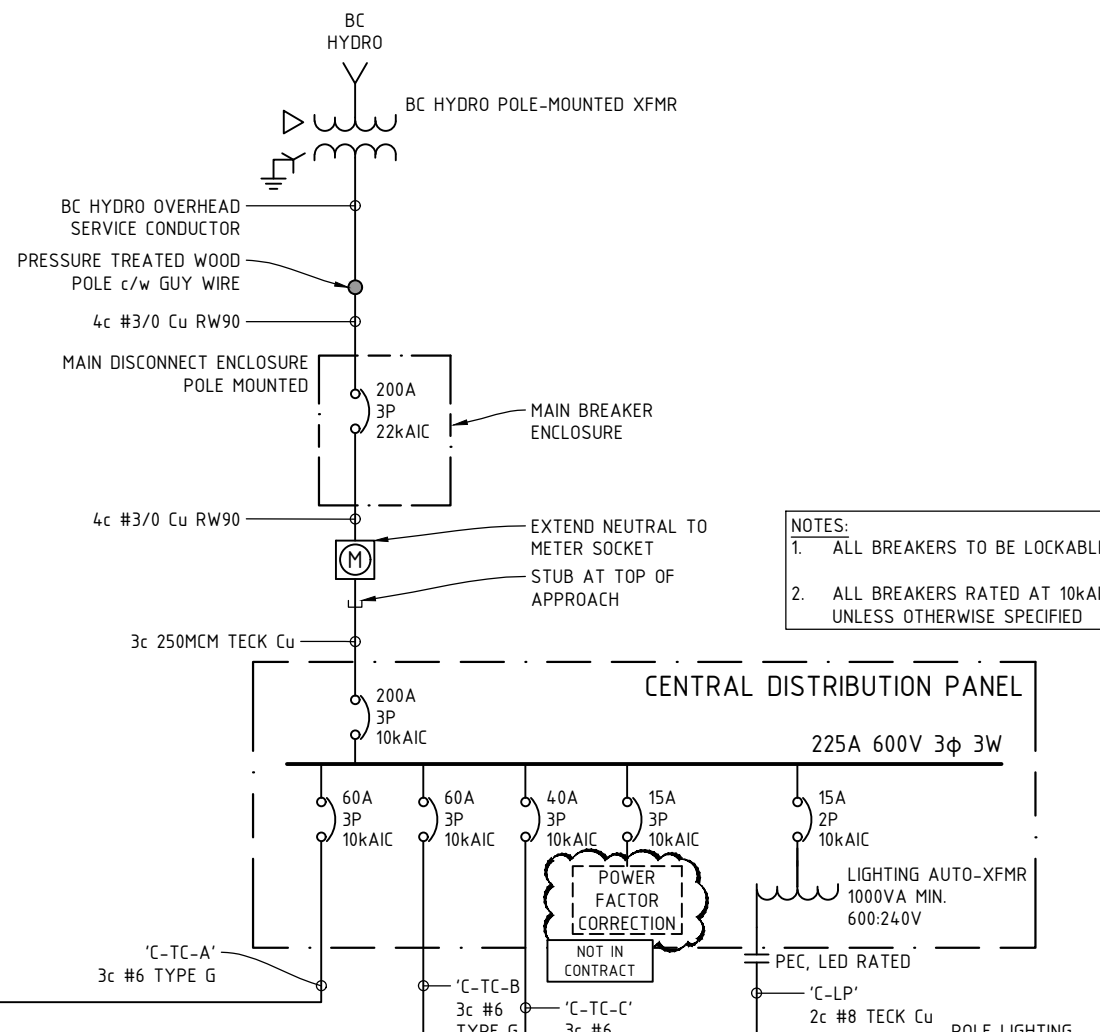
- ⊗ 30A LOCKING RECEPTACLE (L5-30R)
- ⊗ 15A LOCKING RECEPTACLE (L5-15R)
- ⊗ 3000K LED CANOPY LIGHT

NOTES

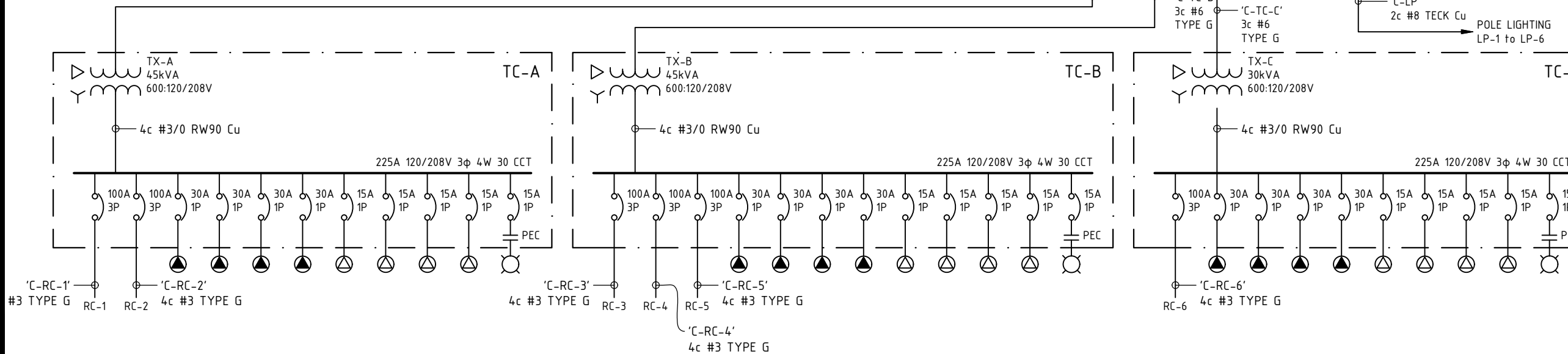
1. BALANCE RECEPTACLE LOADS BETWEEN PHASES FOR EACH FEEDER

2 RECEPTACLE CABINET (RC) SLD - TYPICAL FOR RC-1 TO RC-6

REFER TO DWG E3 FOR GROUNDING



- NOTES:**
1. ALL BREAKERS TO BE LOCKABLE
 2. ALL BREAKERS RATED AT 10kAIC UNLESS OTHERWISE SPECIFIED

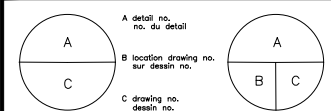


1 SINGLE LINE DIAGRAM

ISSUED FOR TENDER
DO NOT USE FOR CONSTRUCTION
Last Saved: May 9, 2016



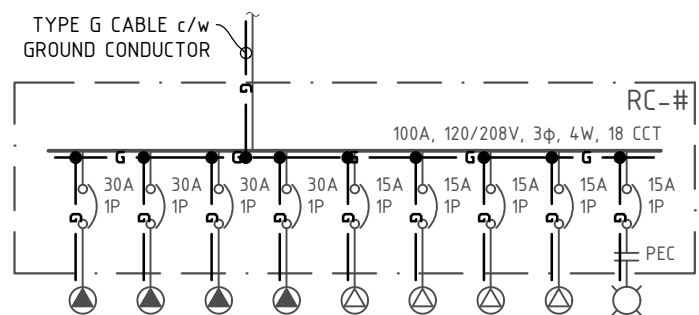
C	ISSUED FOR TENDER	21 APR. 2016
B	ISSUED FOR REVIEW	08 APR. 2016
A	ISSUED FOR REVIEW	24 MAR. 2016



project: MARKTOSIS SCH FLORES ISLAND, BC ELECTRICAL UPGRADE

GROUNDING DIAGRAM

designed	ADAM BEHLEIS	conçu
date	FEBRUARY 2016	
drawn	COLIN FAIR	dessiné
date	FEBRUARY 2016	
approved		approuvé
date		
tender		Submission
PWOSC Project Manager	Administrateur de projets TPSC	
project no.	F1571-147005	no. du projet
drawing no.	E3	no. du dessin

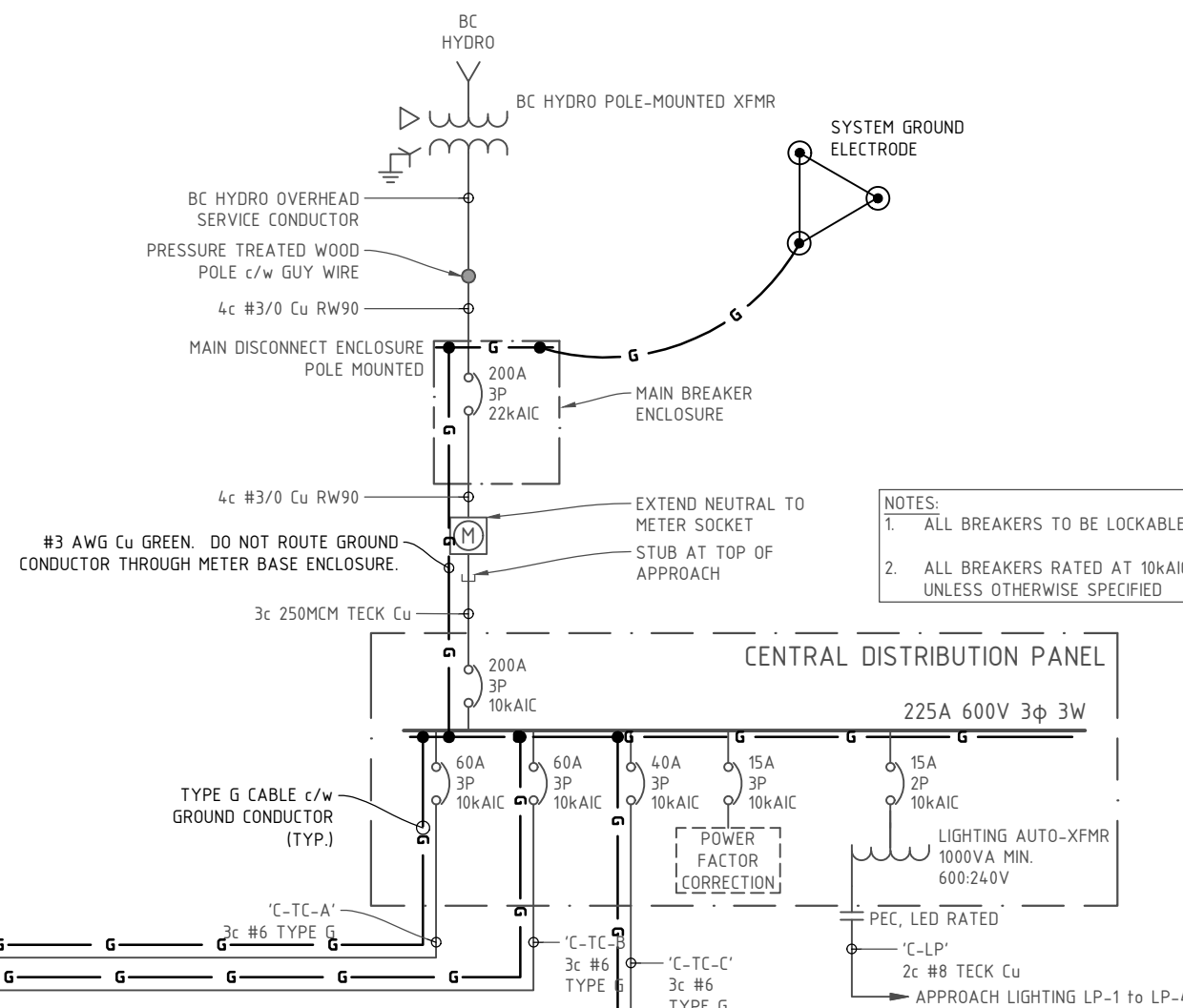


- ⊙ 30A LOCKING RECEPTACLE (L5-30R)
- ⊙ 15A LOCKING RECEPTACLE (L5-15R)
- ⊙ 3000K LED CANOPY LIGHT

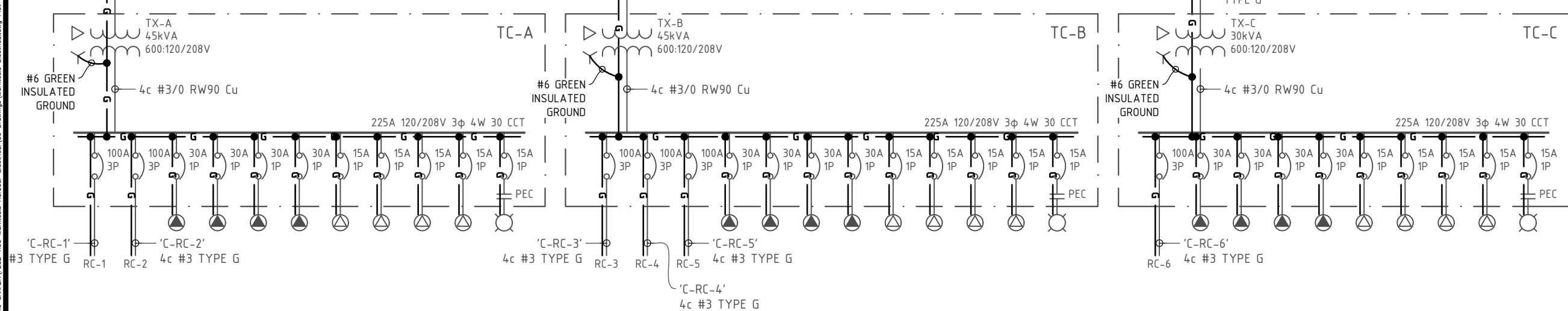
NOTES

1. BALANCE RECEPTACLE LOADS BETWEEN PHASES FOR EACH FEEDER

2 RECEPTACLE CABINET GROUNDING - TYPICAL FOR RC-1 to RC-6



- NOTES:**
1. ALL BREAKERS TO BE LOCKABLE
 2. ALL BREAKERS RATED AT 10KAIC UNLESS OTHERWISE SPECIFIED



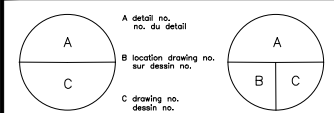
1 GROUNDING DIAGRAM

File: X:\282 Fisheries & Oceans CANADA\F282-R05 Marktosis Harbour Electrical\08 Drawings\Marktosis Electrical.dwg Plot Time: May 09, 2016 12:16pm User: colin.fair

ISSUED FOR TENDER
DO NOT USE FOR CONSTRUCTION
Last Saved: May 9, 2016



C	ISSUED FOR TENDER	21 APR, 2016
B	ISSUED FOR TENDER/CONSTRUCTION	30 MAR, 2016
A	ISSUED FOR REVIEW	24 MAR, 2016

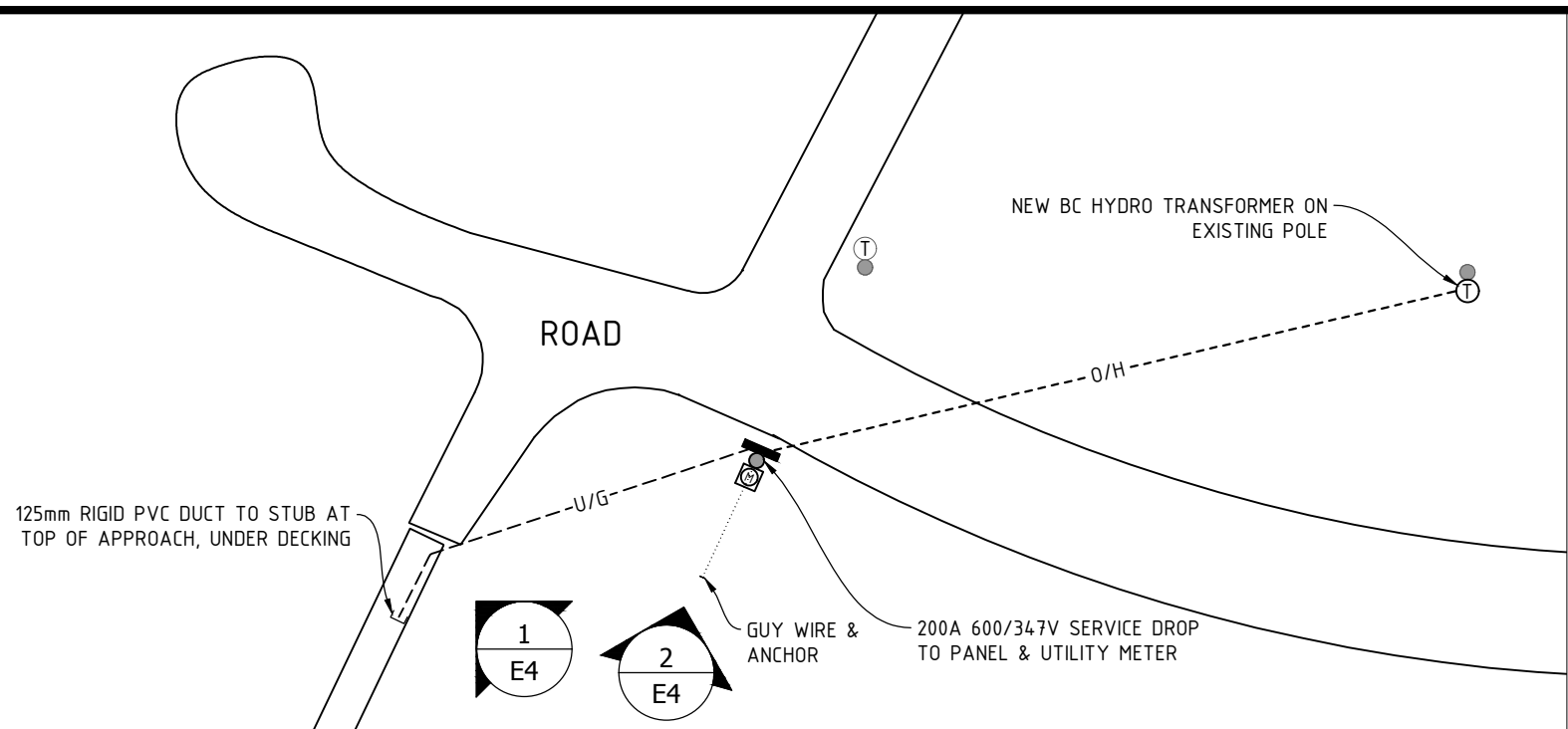


project: MARKTOSIS SCH FLORES ISLAND, BC ELECTRICAL UPGRADE

designed: ADAM BEHIELS
date: FEBRUARY 2016
drawn: COLIN FAIR
date: FEBRUARY 2016

ELECTRICAL SERVICE

designed	ADAM BEHIELS	concu
date	FEBRUARY 2016	
drawn	COLIN FAIR	dessine
date	FEBRUARY 2016	
approved		approuvé
date		
tender		Submission
PWOSC Project Manager	Administrateur de projets TPSCC	
project no.	F1571-147005	no. du projet
drawing no.	E4	no. du dessin



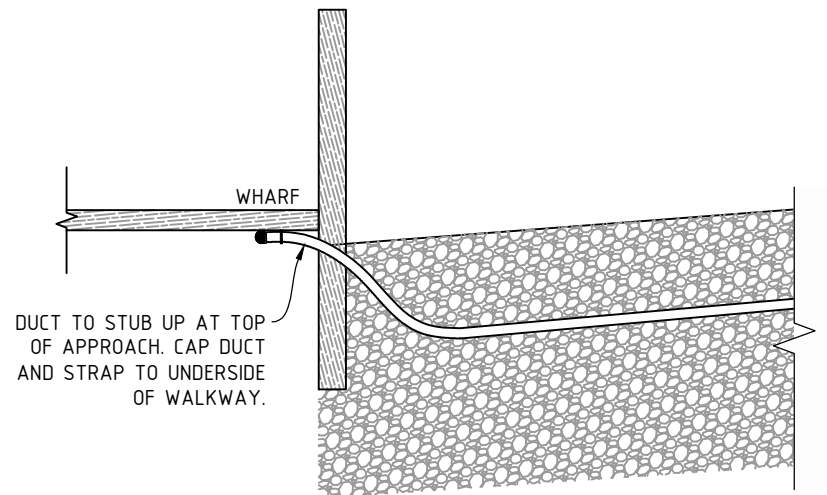
KEY PLAN

Scale: NTS

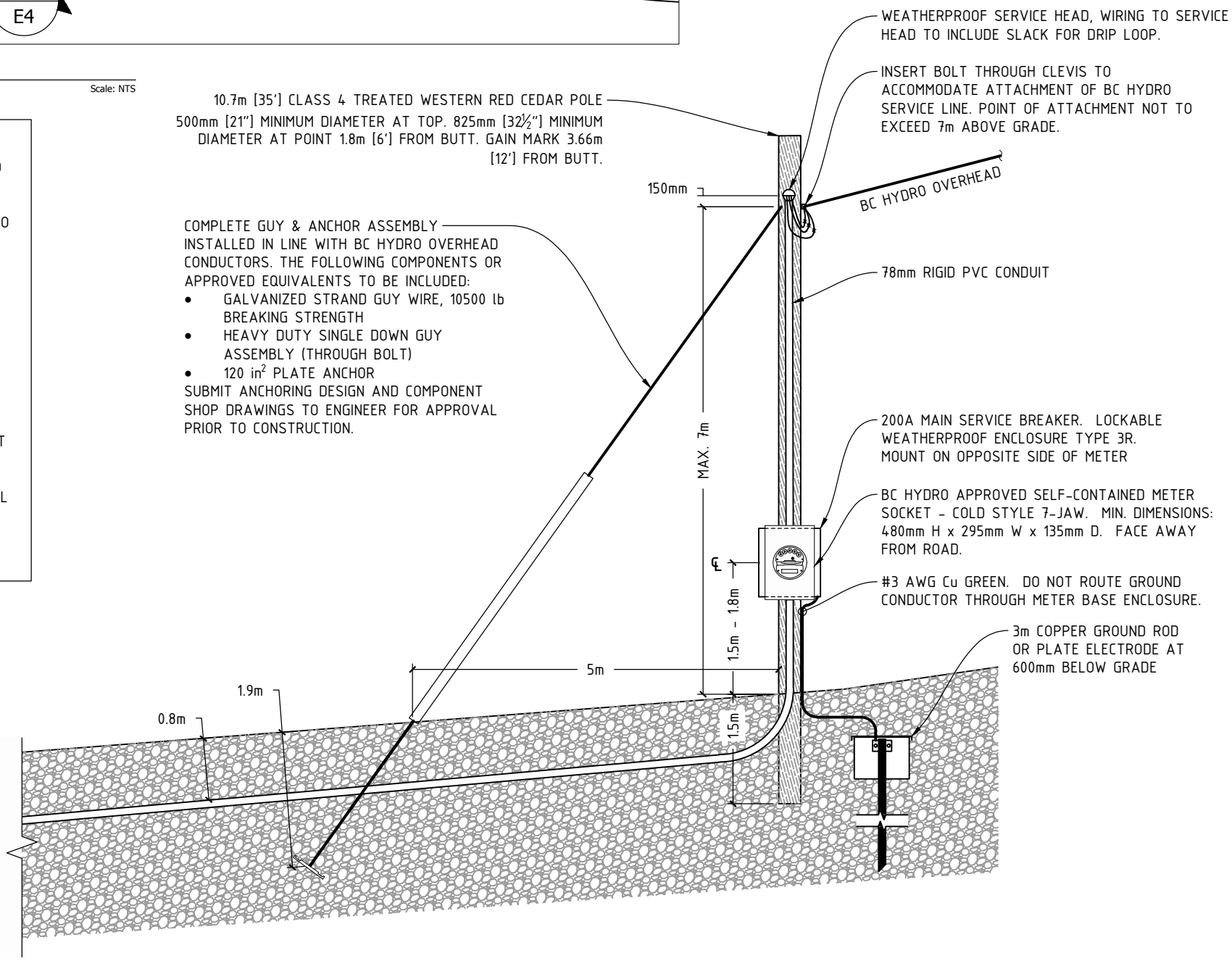
- GUY AND ANCHOR INSTALLATION**
- PLATE AND EXPANDING ANCHORS SHALL BE INSTALLED AGAINST AN UNDERCUT TO BEAR ON FIRM UNDISTURBED SOIL.
 - GUY ASSEMBLY SHALL BE INSTALLED BEFORE ANY CONDUCTORS ARE ATTACHED TO THE POLE AND LOCATED SO THAT THE GUY WILL NOT BE ABRADED BY RUBBING AGAINST ANY WIRE, POLE, OR STRUCTURE.
 - GUY LOCATED SUCH THAT THERE IS A POSSIBILITY OF CONTACT WITH SUPPLY CONDUCTORS DUE TO THE FAILURE OF THE GUY OR CONDUCTORS SHALL BE EFFECTIVELY INSULATED.
 - ALL DOWN GUYS SHALL BE FITTED WITH A HIGHLY VISIBLE GUARD AND HAVE AT LEAST ONE STRAIN INSULATOR INSTALLED.
 - GUY STRAIN INSULATORS SHALL BE INSTALLED SO THAT:
 - IF THE GUY IS HANGING VERTICALLY, THE LOWEST INSULATOR WILL BE AT LEAST 2.5 m (8') ABOVE GROUND; AND
 - IF THE GUY SHOULD BREAK LOOSE FROM ITS ANCHOR, THERE WILL BE AN INSULATOR BETWEEN ANY TRANSMISSION, PRIMARY AND SECONDARY OR NEUTRAL CONDUCTORS SO AS TO PREVENT A GUY WIRE SHORT CIRCUIT PATH BETWEEN CONDUCTORS.
 - GROUND GUY ACCORDING TO CANADIAN ELECTRICAL CODE.

10.7m [35'] CLASS 4 TREATED WESTERN RED CEDAR POLE
500mm [21"] MINIMUM DIAMETER AT TOP. 825mm [32½"] MINIMUM DIAMETER AT POINT 1.8m [6'] FROM BUTT. GAIN MARK 3.66m [12'] FROM BUTT.

- COMPLETE GUY & ANCHOR ASSEMBLY INSTALLED IN LINE WITH BC HYDRO OVERHEAD CONDUCTORS. THE FOLLOWING COMPONENTS OR APPROVED EQUIVALENTS TO BE INCLUDED:
- GALVANIZED STRAND GUY WIRE, 10500 lb BREAKING STRENGTH
 - HEAVY DUTY SINGLE DOWN GUY ASSEMBLY (THROUGH BOLT)
 - 120 in² PLATE ANCHOR
- SUBMIT ANCHORING DESIGN AND COMPONENT SHOP DRAWINGS TO ENGINEER FOR APPROVAL PRIOR TO CONSTRUCTION.



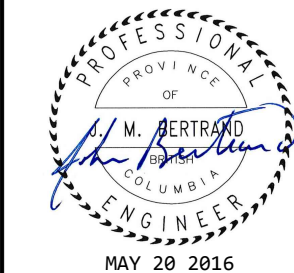
1 DUCT STUB-UP ELEVATION (LOOKING NORTH)
Scale: NTS



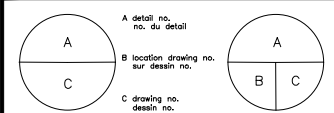
2 SERVICE POLE ELEVATION (LOOKING NORTH)
Scale: NTS

File: X:\F282 Fisheries & Oceans CANADA\F282-R05 Marktosis Harbour Electrical\08 Drawings\Marktosis Electrical.dwg Plot Time: May 09, 2016 12:16pm User: colin.fair

ISSUED FOR TENDER
DO NOT USE FOR CONSTRUCTION
Last Saved: May 9, 2016



C	ISSUED FOR TENDER	21 APR, 2016
B	ISSUED FOR REVIEW	08 APR, 2016
A	ISSUED FOR REVIEW	24 MAR, 2016
code	revisions	date (DD MM, YYYY)



project
MARKTOSIS SCH FLORES ISLAND, BC ELECTRICAL UPGRADE
—
—

drawing desin

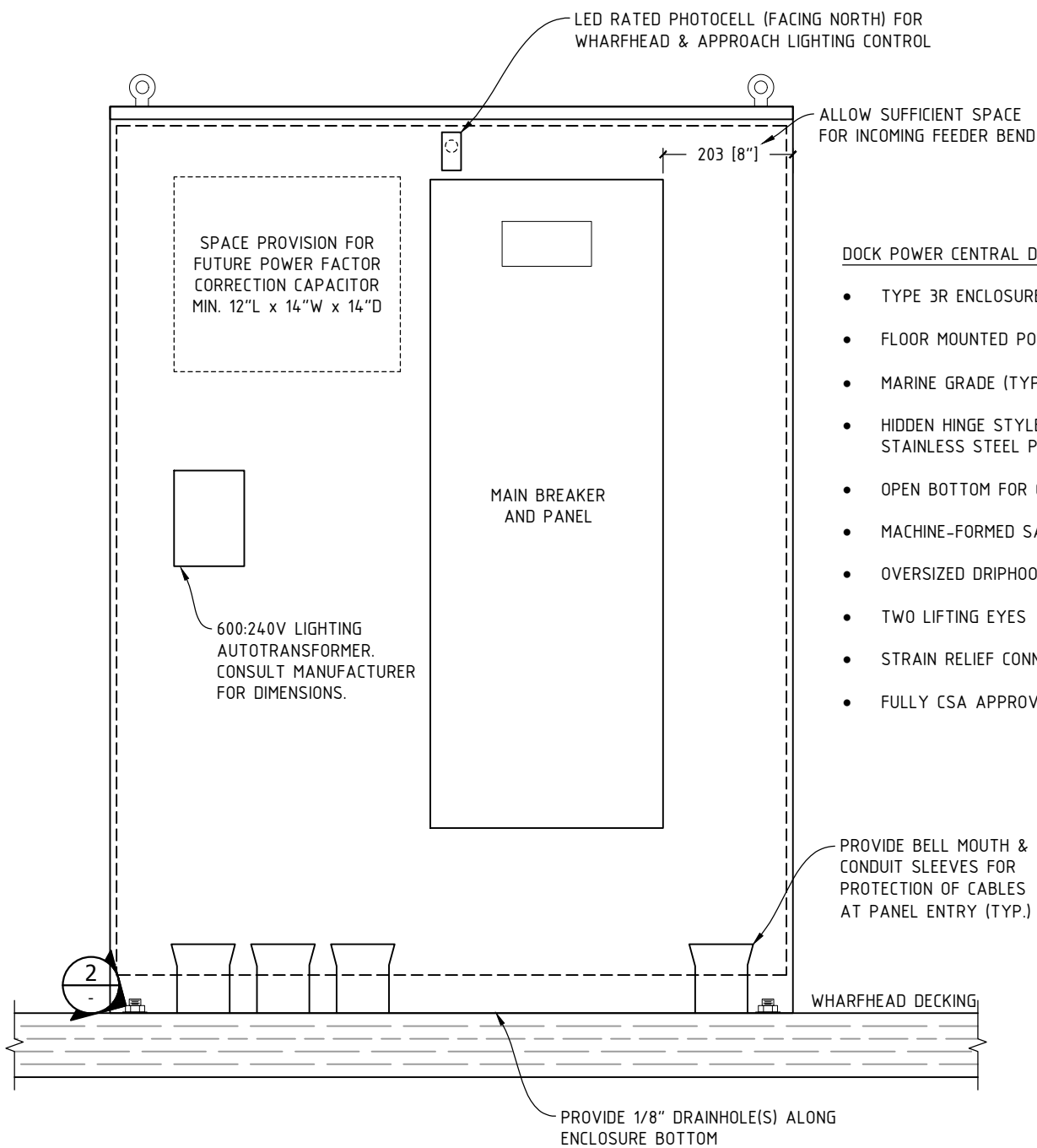
CABINET & EQUIPMENT MOUNTING DETAILS
—
—

designed ADAM BEHIELS concu
date FEBRUARY 2016
drawn COLIN FAIR desin
date FEBRUARY 2016
approved — approve
date —

tender — Soumission

PWSGC Project Manager Administrateur de projets TPWSGC
project no. F1571-147005 no. du projet

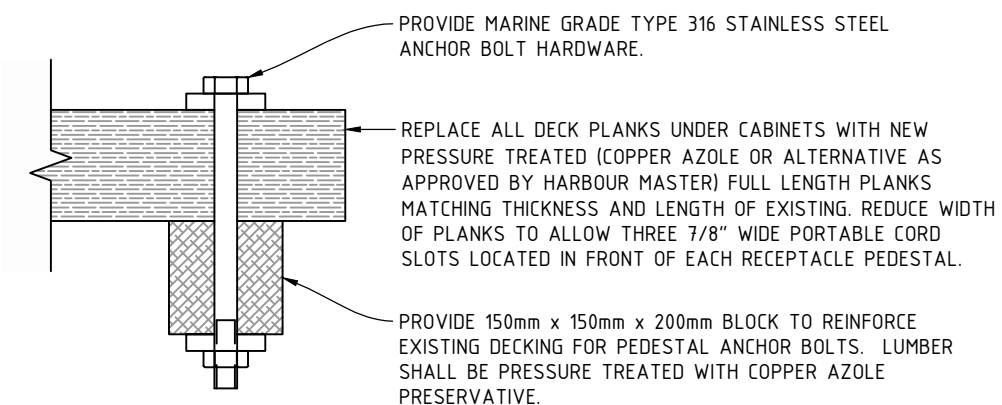
drawing no. E5 no. du dessin



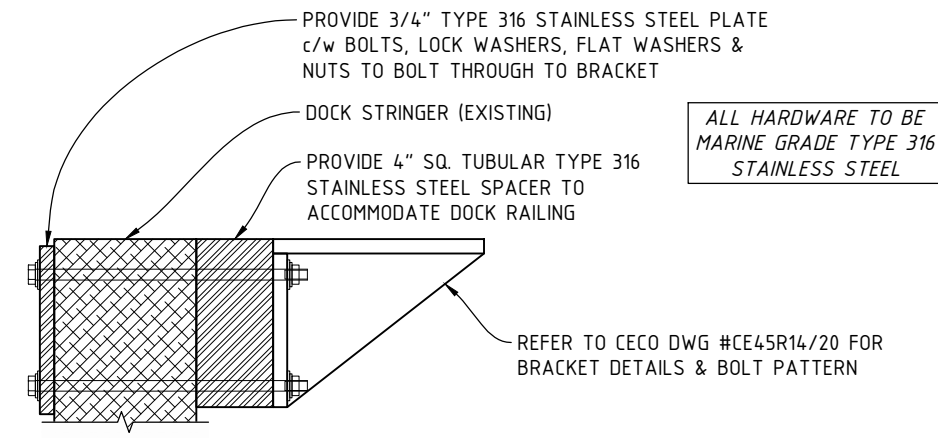
DOCK POWER CENTRAL DISTRIBUTION PANEL - WEATHERPROOF

- TYPE 3R ENCLOSURE
- FLOOR MOUNTED POWER DISTRIBUTION CENTRE
- MARINE GRADE (TYPE 316) STAINLESS STEEL BODY
- HIDDEN HINGE STYLE DOOR GASKETED c/w 3-POINT STAINLESS STEEL PADLOCKABLE HANDLE
- OPEN BOTTOM FOR CABLE ENTRY c/w 2" INNER FLANGE
- MACHINE-FORMED SAFETY CORNERS
- OVERSIZED DRIPHOOD ON FRONT & FORMED DRIP GUTTER
- TWO LIFTING EYES
- STRAIN RELIEF CONNECTORS FOR ALL INTERIOR WIRING
- FULLY CSA APPROVED

1 CENTRAL DISTRIBUTION PANEL - FRONT VIEW (LESS DOOR FOR CLARITY)
Scale: NTS



2 ANCHOR BOLT DETAIL
Scale: NTS



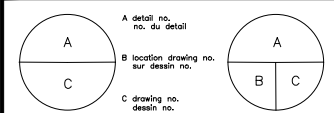
3 SIDE-MOUNT LIGHT POLE BRACKET MOUNTING DETAIL
Scale: NTS

File: X:\V282 Fisheries & Oceans CANADA\F282-R05 Marktosis Harbour Electrical\08 Drawings\Marktosis Electrical.dwg Plot Time: May 09, 2016 12:16pm User: colin.fair

ISSUED FOR TENDER
DO NOT USE FOR CONSTRUCTION
Last Saved: May 9, 2016



C	ISSUED FOR TENDER	21 APR, 2016
B	ISSUED FOR REVIEW	08 APR, 2016
A	ISSUED FOR REVIEW	24 MAR, 2016
code	revisions	date (DD MM, YYYY)



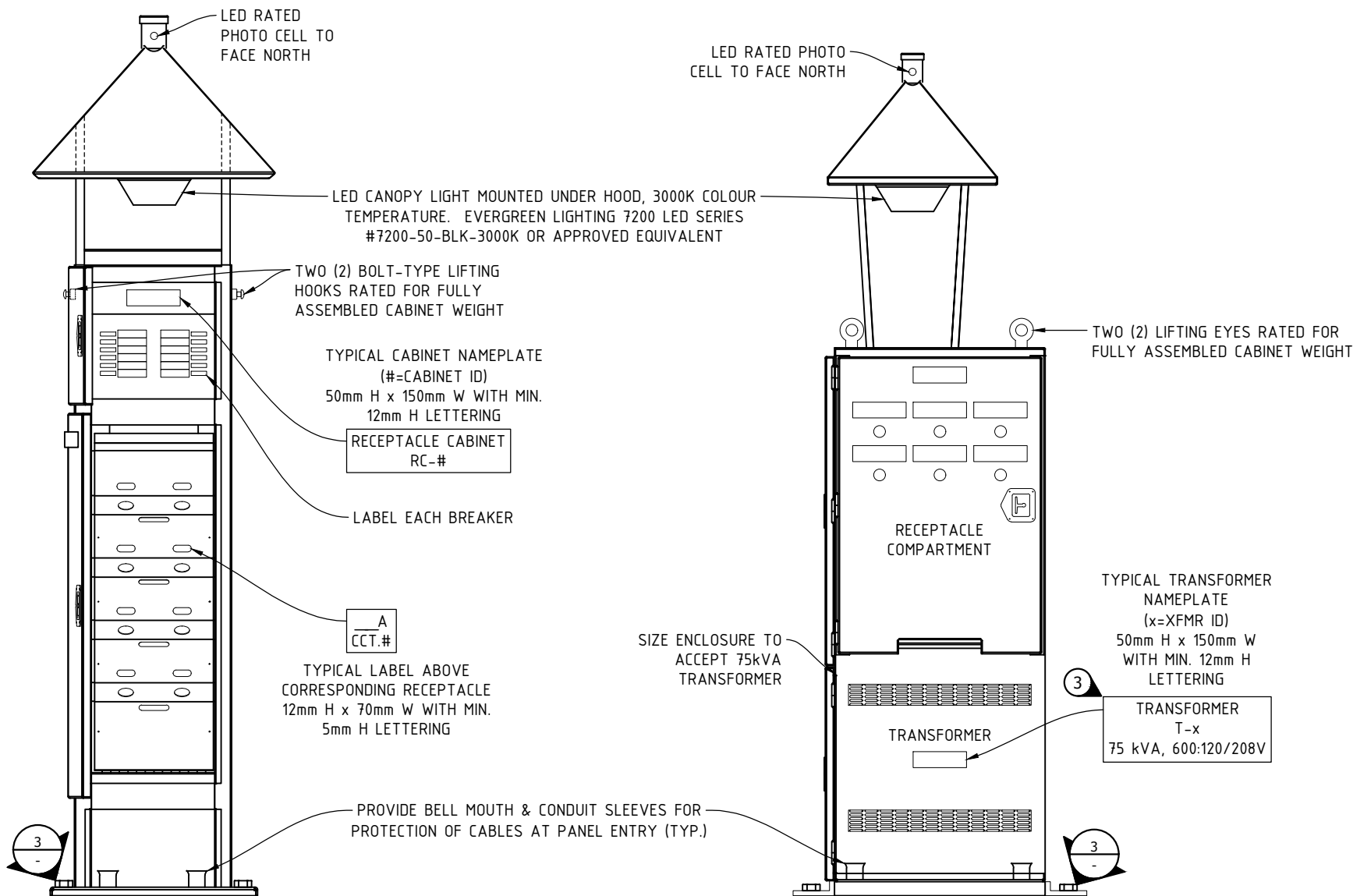
project: MARKTOSIS SCH FLORES ISLAND, BC ELECTRICAL UPGRADE

project: MARKTOSIS SCH FLORES ISLAND, BC ELECTRICAL UPGRADE

drawing: TRANSFORMER & RECEPTACLE CABINET DETAILS

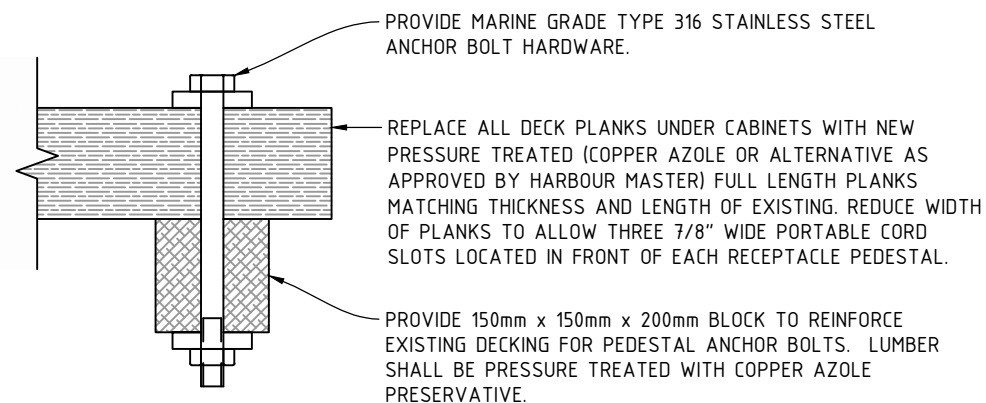
TRANSFORMER & RECEPTACLE CABINET DETAILS

designed	ADAM BEHIELS	conçu
date	FEBRUARY 2016	
drawn	COLIN FAIR	dessiné
date	FEBRUARY 2016	
approved		approuvé
date		
tender		Submission
PWOSC Project Manager	Administrateur de projets TPSCC	
project no.	F1571-147005	no. du projet
drawing no.	E6	no. du dessin



1 RECEPTACLE CABINET (RC-#) - FRONT VIEW (TYP)
Scale: NTS

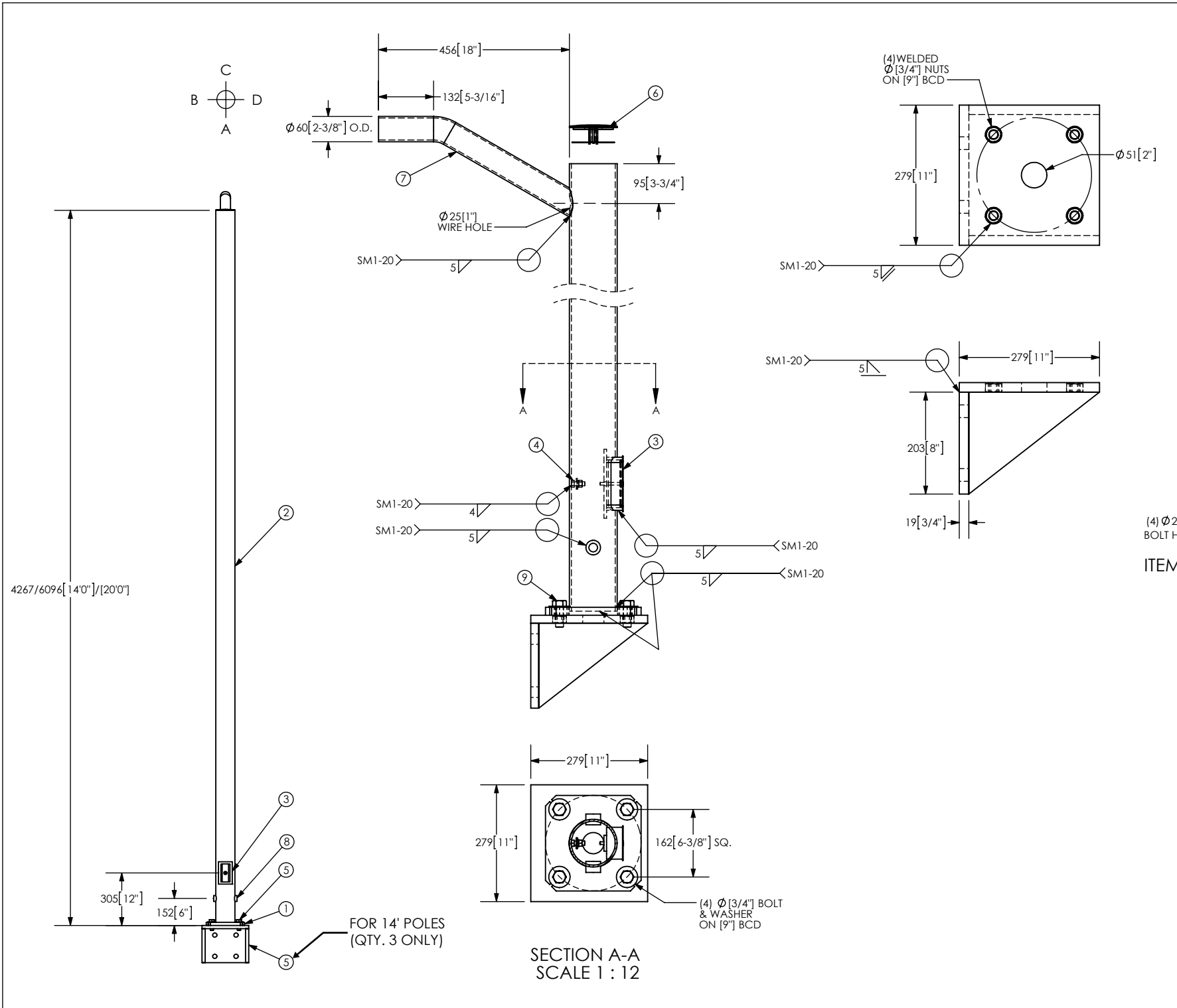
2 TRANSFORMER/RECEPTACLE CABINET (TC-x) - FRONT VIEW (TYP)
Scale: NTS



3 ANCHOR BOLT DETAIL (TYP)
Scale: NTS

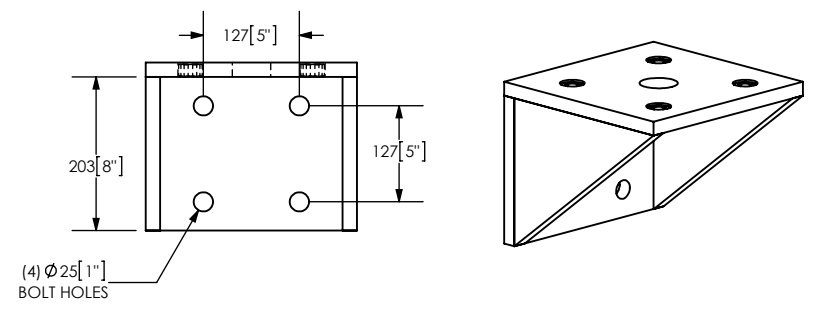
GENERAL NOTES:

1. PROVIDE PANEL SCHEDULE IN EACH PEDESTAL. PROVIDE NEW LABELLING AT MAIN PANEL.
2. CONTRACTOR TO DETERMINE WHERE EXTRA FLOATION WILL BE REQUIRED TO BALANCE THE FLOAT FREE BOARD AND REPORT TO CONSULTANT. FLOATION UNIT WILL BE SUPPLIED BY OWNER.
3. ALL LABELS TO BE 1/8" THICK PHENOLIC LAMINATE SHEET (LAMICOID) OR LASER ENGRAVED METAL, MECHANICALLY FASTENED TO ENCLOSURE AS SHOWN.
4. ALL ENCLOSURES TO INCLUDE MINIMUM ONE DRAINHOLE LARGE ENOUGH TO ALLOW CONDENSATION OR INGRESSED WATER TO DRAIN FASTER THAN IT CAN ACCUMULATE.
5. ROOF SECTION TO BE WELDED TO ENCLOSURE. MANUFACTURER TO INSTALL LUMINAIRE CONDUCTORS INTERNALLY THROUGH ROOF SUPPORTS.
6. ALL CABINET LOCKS TO BE KEYED THE SAME.
7. SECONDARY CABLE CONNECTION FROM TRANSFORMER TO PANEL COMPARTMENT TO BE PROVIDED THROUGH FLEXIBLE CONDUIT OR ARMOURD CABLE
8. PROVIDE STRAIN RELIEF CONNECTORS TO SUPPORT ALL INTERIOR WIRING.



ITEM	QTY.	DESCRIPTION	MATERIAL
1	1	SQ. BASE PLATE [9" x 3/4" PL.	44W
2	1	STD. STEEL [4" PIPE, [4.5" O.D. X [1.188" WALL, [14"]/[20'0"] LG.	50W
3	1	HANDHOLE ASS'Y [5" X [3" X [1/4" X [1-3/4" LG. C/W COVER	44W
4	1	GROUNDSTUD [3/8" NC X [1" LG. C/W NUT & WASHER	PLATED
5	1	BRACKET [3/4" PL. c/w (4) Ø [3/4" NUT WELDED	44W
6	1	ROUND POLE CAP Ø [4-1/2"]	PP
7	1	Ø [2-3/8" O.D. FIXTURE ARM, [0.188" WALL, [18" LG., LOC. "C"	50W
8	2	#3000 [3/4" HALF COUPLING	STEEL
9	4	Ø [3/4" X [2" LG. BOLT	GR.5

NOTE : i POLE FINISH HDG.
 ii (3) CE45R14 , (1) CE45R20.



ITEM 5 - SIDE-MOUNT BRACKET DETAIL
 (FOR 14' POLES, QTY. 3 ONLY)

NOTE: ALL BRACKETS, BOLTS & FASTENERS TO BE MARINE GRADE TYPE 316 STAINLESS STEEL

THIS DRAWING IS PROPERTY OF CECO POLES & STRUCTURES INC.		
WORK ORDER NO. *	PURCHASE ORDER NO. *	PAGE 1/1
5110-56th AVENUE S.E. CALGARY, ALBERTA T: 403 279 0530 F: 403 279 0531 EMAIL: info@cecopoles.ca		
DRAWN BY BM	TITLE STEEL STD. ROUND POLE, 14/20 FT.	
DATE APR. 08/2016	CUSTOMER / JOB HARBOUR WALKWAY/LSW LIGHTING/ RELUMEN ENGINEERING	
SCALE NTS	REV. NO. B	DWG. NO. CE45R14/CE45R20
QUANTITY 4		