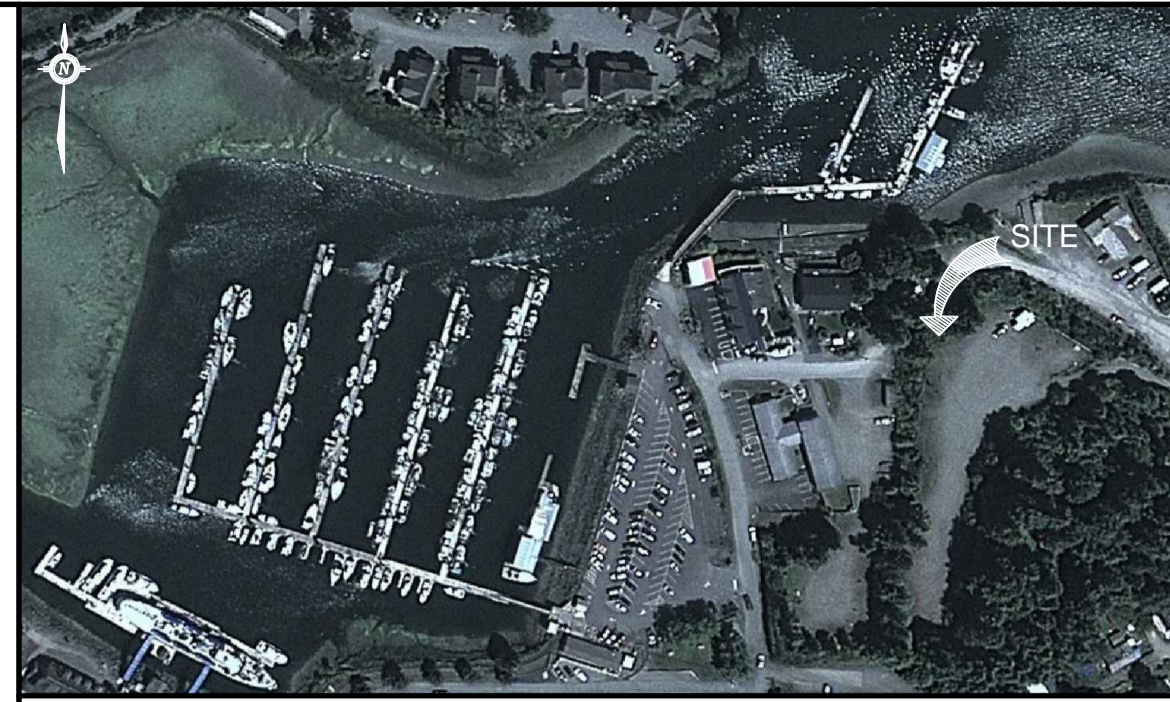
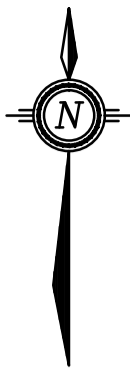


DESIGN CRITERIA:

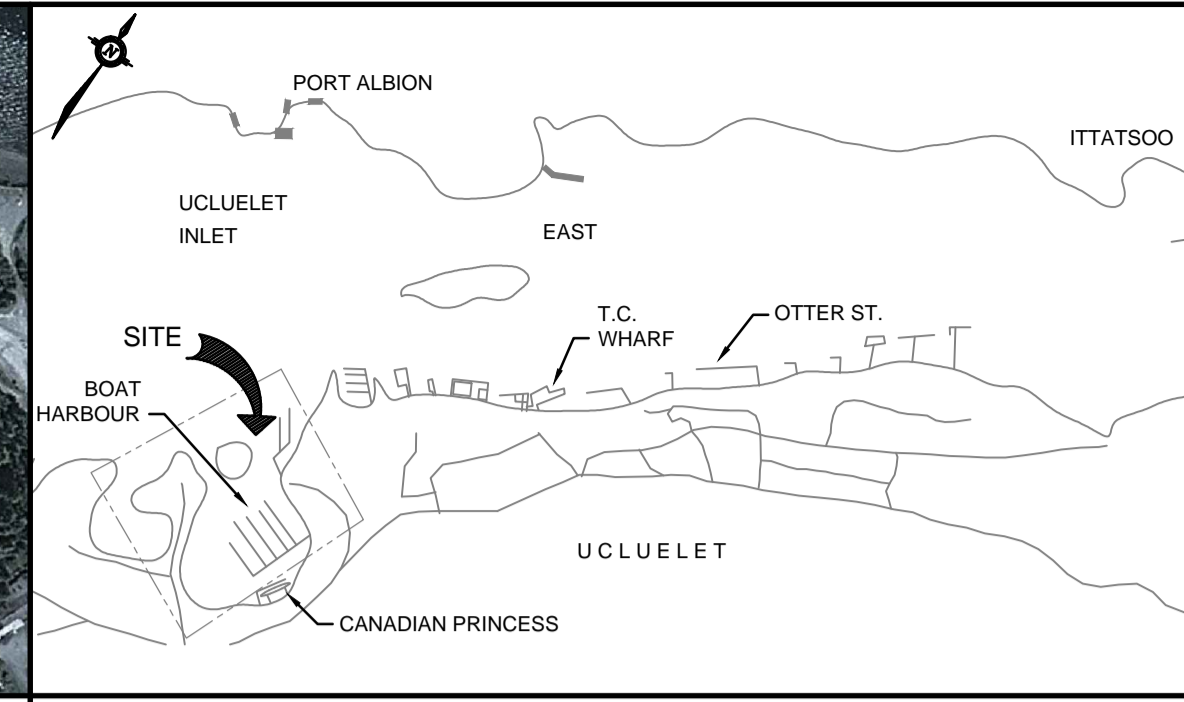
1. TIDES:	TIDE & CHART DATUM
HIGHER HIGH WATER LEVEL (H.H.W.L.)	+4.0 m
MEAN WATER LEVEL (M.W.L.)	+2.0 m
LOWER LOW WATER LEVEL (L.L.W.L.)	-0.1 m
2. WIND:	
DESIGN WIND PRESSURE (1 IN 50 YRS)	= 0.68kPa
3. SNOW:	
SPECIFIED GROUND SNOW LOAD	S _s = 1.0kPa
SPECIFIED ASSOCIATED RAIN LOAD	S _r = 0.4kPa
4. SEISMIC:	
	PGA = 0.53
5. BOLLARD LOAD	= 50kN

GENERAL NOTES:

- GENERAL**
- ALL DIMENSIONS ARE IN MILLIMETRES UNLESS NOTES OTHERWISE.
 - ALL ELEVATIONS ARE IN METRES AND ARE TO HYDROGRAPHIC DATUM.
 - FACILITY PLAN BATHYMETRY BASED ON BATHYMETRIC SITE PLAN OF UCLUELET BOAT BASIN DWG. C1022.BATHY.DWG BY BAZETT LAND SURVEYING LTD. DATED SEP. 1, 2009
- STRUCTURAL AND MISCELLANEOUS STEEL**
- ALL ROLLED SECTIONS & MISCELLANEOUS PLATES TO BE GRADE 300W CONFORMING TO CAN CSA STD. G40.20/G40.21 UNLESS NOTED OTHERWISE.
 - ALL BOLTS TO CONFORM TO ASTM A325 UNLESS NOTED OTHERWISE.
 - ALL WELDING TO CONFORM TO CAN CSA STD. W47, W48 & W59. THE MINIMUM WELD SIZE TO BE 6mm.
 - ALL PIPE PILE SECTIONS SHALL BE STRAIGHT SEAM PIPE CONFORMING TO A252 GRADE 3 OR APPROVED EQUIVALENT.
 - WALL THICKNESS OF DOLPHIN STEEL PILES INCREASED BY 2.5mm AS CORROSION PROTECTION.



AERIAL VIEW



LOCATION PLAN

Public Works and Government Services Canada / Travaux publics et Services gouvernementaux Canada

REAL PROPERTY SERVICES
Western Region
SERVICES IMMOBILIERS
Région de l'ouest

PRELIMINARY
NOT FOR CONSTRUCTION

VJA ENGINEERING
VILLHOLTH JENSEN & ASSOC. LTD.
CONSULTING ENGINEERS
VANCOUVER, B.C.



SITE PLAN
SCALE 1:750

DO NOT SCALE DRAWINGS

Revision/Revision	Description/Description	Date/Date
A	ISSUED FOR TENDER	16/03/22

Fisheries & Oceans Canada
Real Property
Safety & Security
200 - 401 Burrard Street
Vancouver, Canada, V6C 3S4

Project title/Titre du projet

UCLUELET HARBOUR

Approved by/Approve par

A.P.

Designed by/Concept par

A.P.

Drawn by/Dessine par

WSL

PWGSC Project Manager/Administrateur de Projets TPSGC

PWGSC, Architectural and Engineering Resources Manager/
Ressources Architectural et de Directeur d'ingénierie, TPSGC

Client/client

SCH

Drawing title/Titre du dessin

SITE PLAN

Project No./No. du projet

216104

Sheet/ Feuille

001

Revision no./
La Revision no.

A

PRELIMINARY
NOT FOR CONSTRUCTION

VJA ENGINEERING
VILLHOLTH JENSEN & ASSOC. LTD.
CONSULTING ENGINEERS
VANCOUVER, B.C.



DO NOT SCALE DRAWINGS

Revision / Révision	Description / Description	Date / Date
A	ISSUED FOR TENDER	16/03/22

Fisheries & Oceans Canada
Real Property Safety & Security
200 - 401 Burrard Street
Vancouver, Canada, V6C 3S4

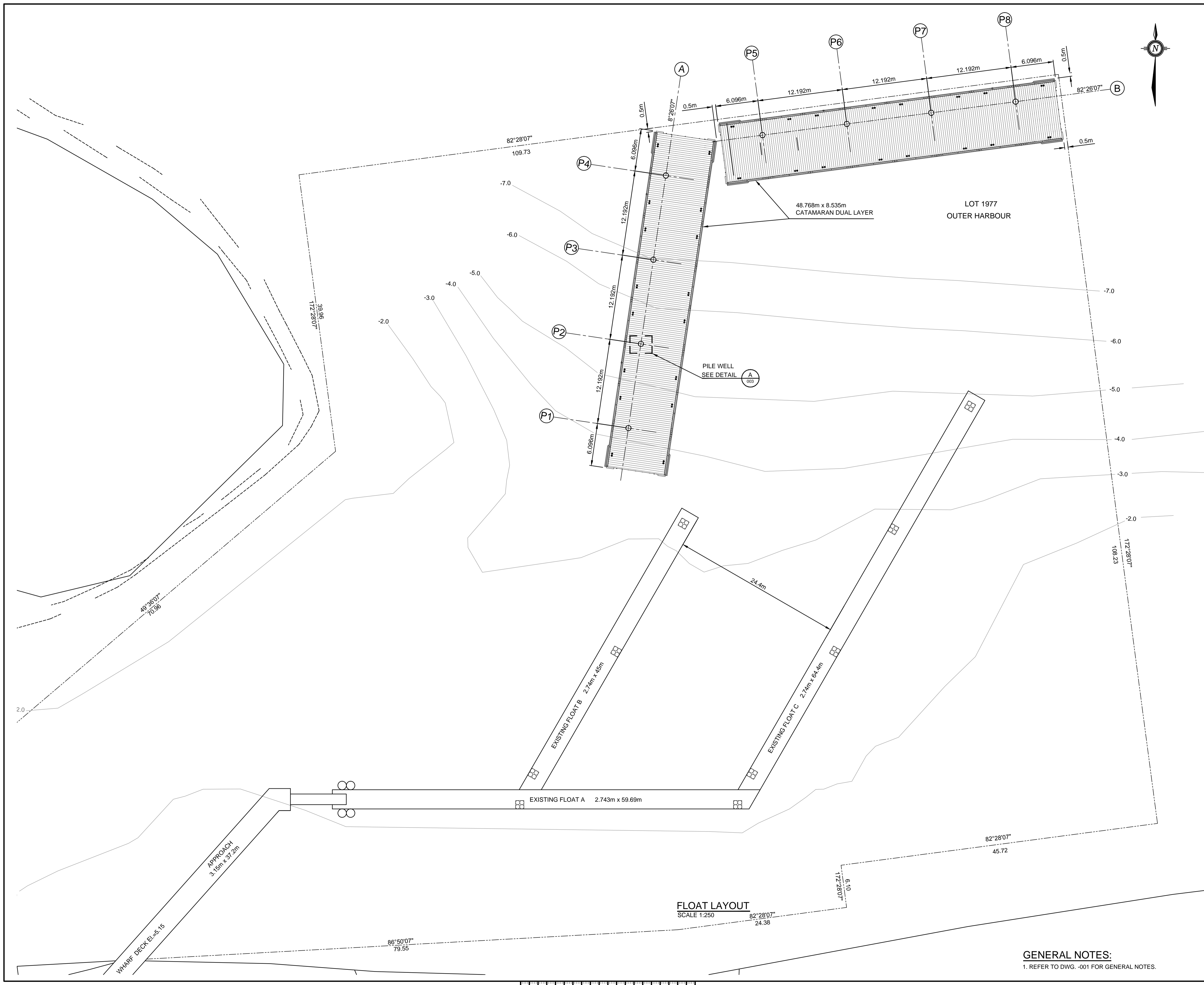
Project title / Titre du projet
UCLUELET HARBOUR

Approved by / Approuvé par
A.P.
Designed by / Concept par
A.P.
Drawn by / Dessiné par
WSL
PWGSC Project Manager / Administrateur de Projets TPSGC

PWGSC, Architectural and Engineering Resources Manager / Ressources Architecturales et de Directeur d'ingénierie, TPSGC
Client / client
SCH

Drawing title / Titre du dessin
OUTER HARBOUR GENERAL ARRANGEMENT

Project No. / No. du projet 216104	Sheet / Feuille 002 OF	Revision no. / La Révision no. A
--	-------------------------------------	--



FLOAT LAYOUT
SCALE 1:250

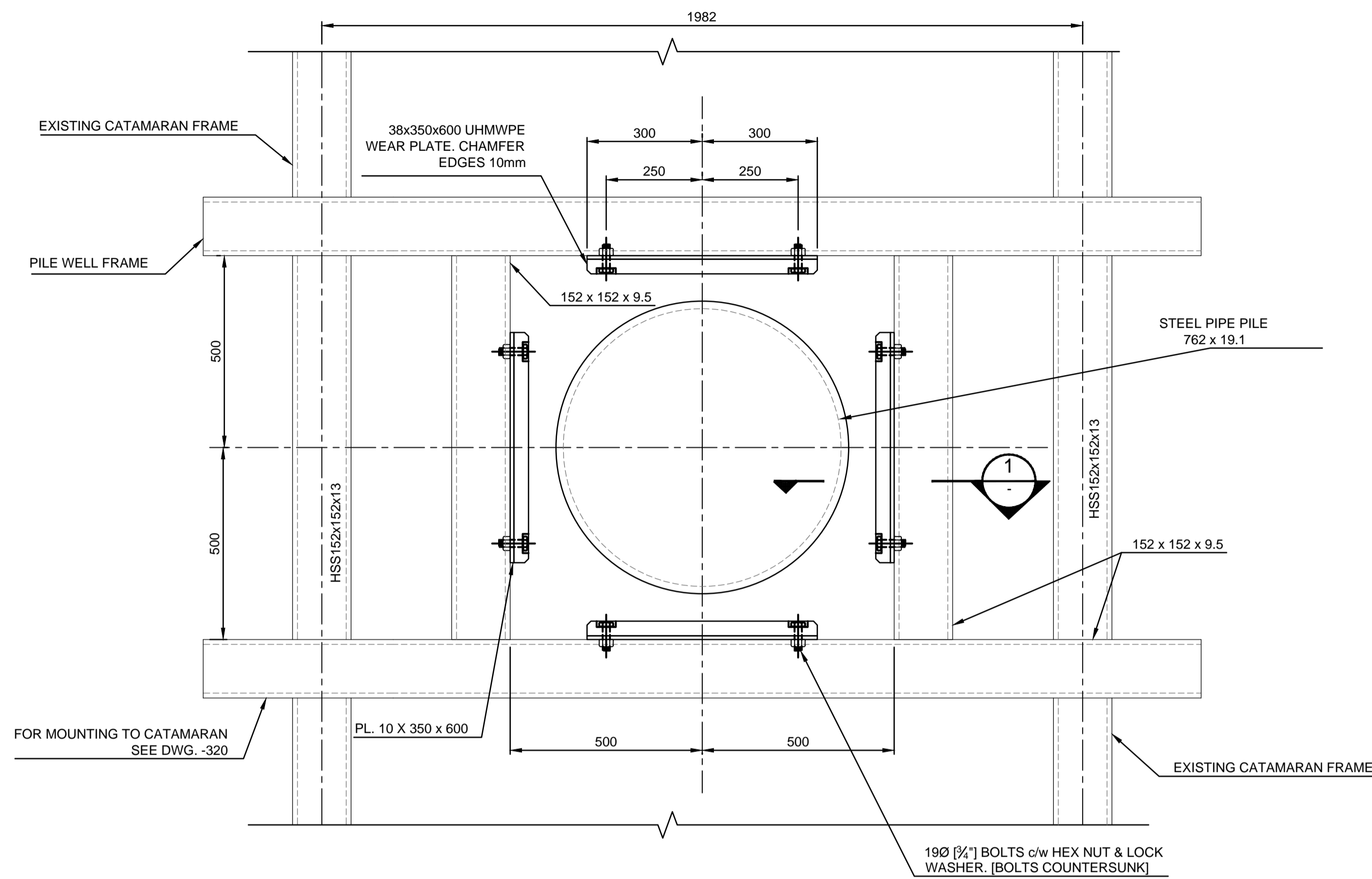
GENERAL NOTES:
1. REFER TO DWG. -001 FOR GENERAL NOTES.

TABLE 1: PILE TABLE

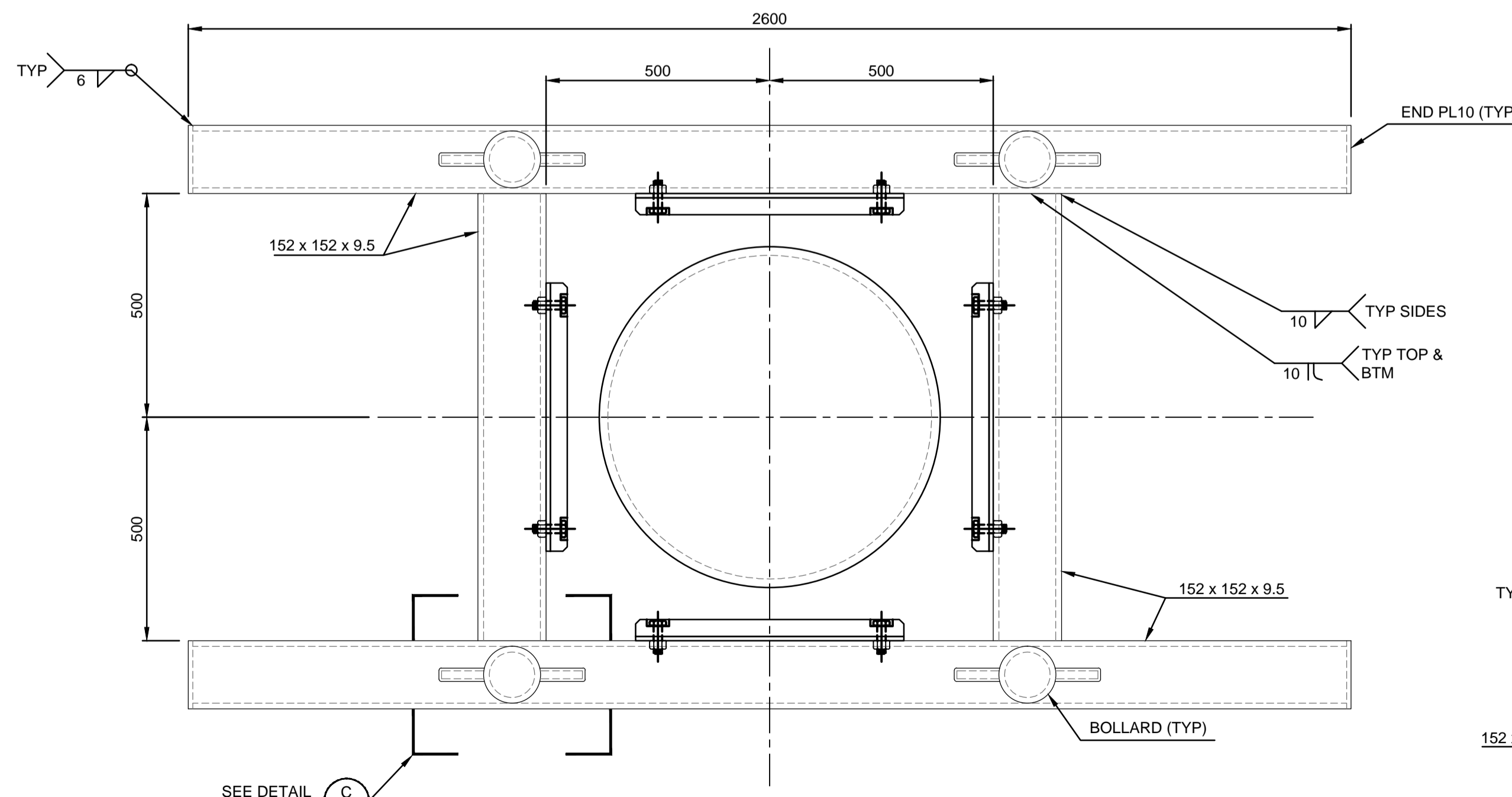
PILE	PILE TYPE	CUT OFF ELEVATION	ESTIMATED SEABED ELEV.	PILE LENGTH	MINIMUM PENETRATION INTO BEDROCK
P1	PIPE PILE 762 x 19.1 mm	+7.0 m	-4.0 m	20.0 m	SEE TABLE 2
P2	PIPE PILE 762 x 19.1 mm	+7.0 m	-5.5 m	21.5 m	
P3	PIPE PILE 762 x 19.1 mm	+7.0 m	-6.5 m	22.5 m	
P4	PIPE PILE 762 x 19.1 mm	+7.0 m	-8.0 m	24.0 m	
P5	PIPE PILE 762 x 19.1 mm	+7.0 m	-9.0 m	25.0 m	
P6	PIPE PILE 762 x 19.1 mm	+7.0 m	-9.0 m	25.0 m	
P7	PIPE PILE 762 x 19.1 mm	+7.0 m	-9.0 m	25.0 m	
P8	PIPE PILE 762 x 19.1 mm	+7.0 m	-9.0 m	25.0 m	

TABLE 2: ROCK PENETRATION

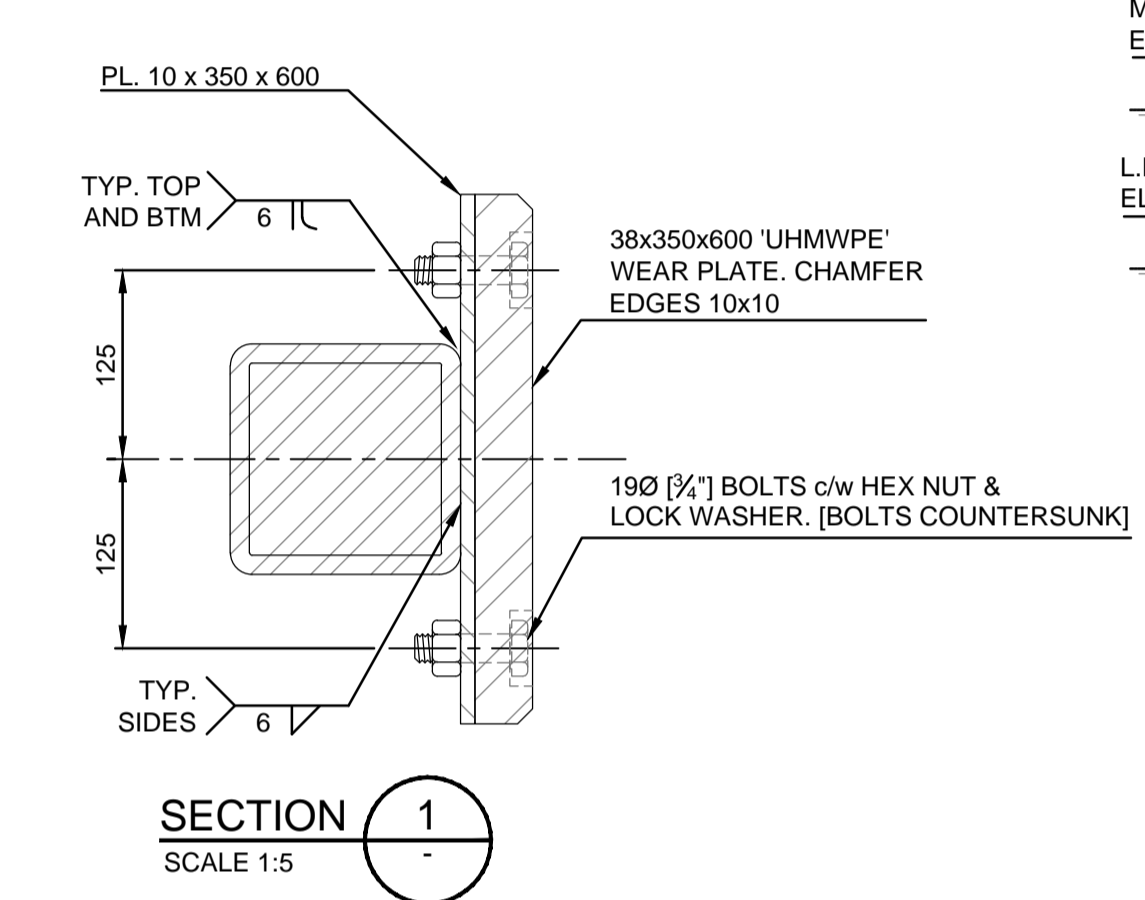
PILE PENETRATION IN OVERBURDEN	MINIMUM PENETRATION INTO BEDROCK
9 m OR MORE	0.0 m
8 m	0.4 m
7 m	0.8 m
6 m	1.2 m
5 m	1.6 m
4 m	2.0 m
3 m	2.4 m
2 m OR LESS	2.8 m



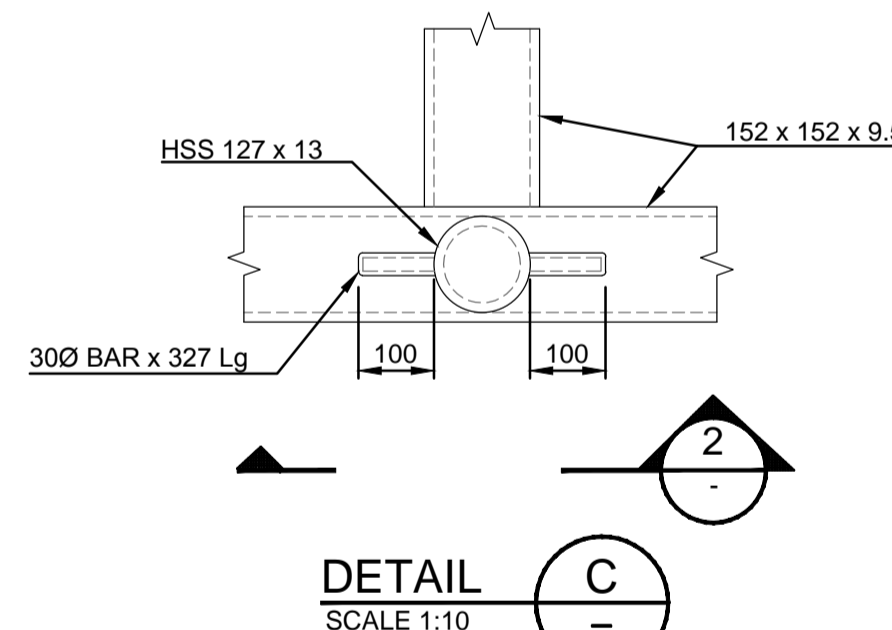
DETAIL A
SCALE 1:10
002
[BOLLARDS NOT SHOWN FOR CLARITY]



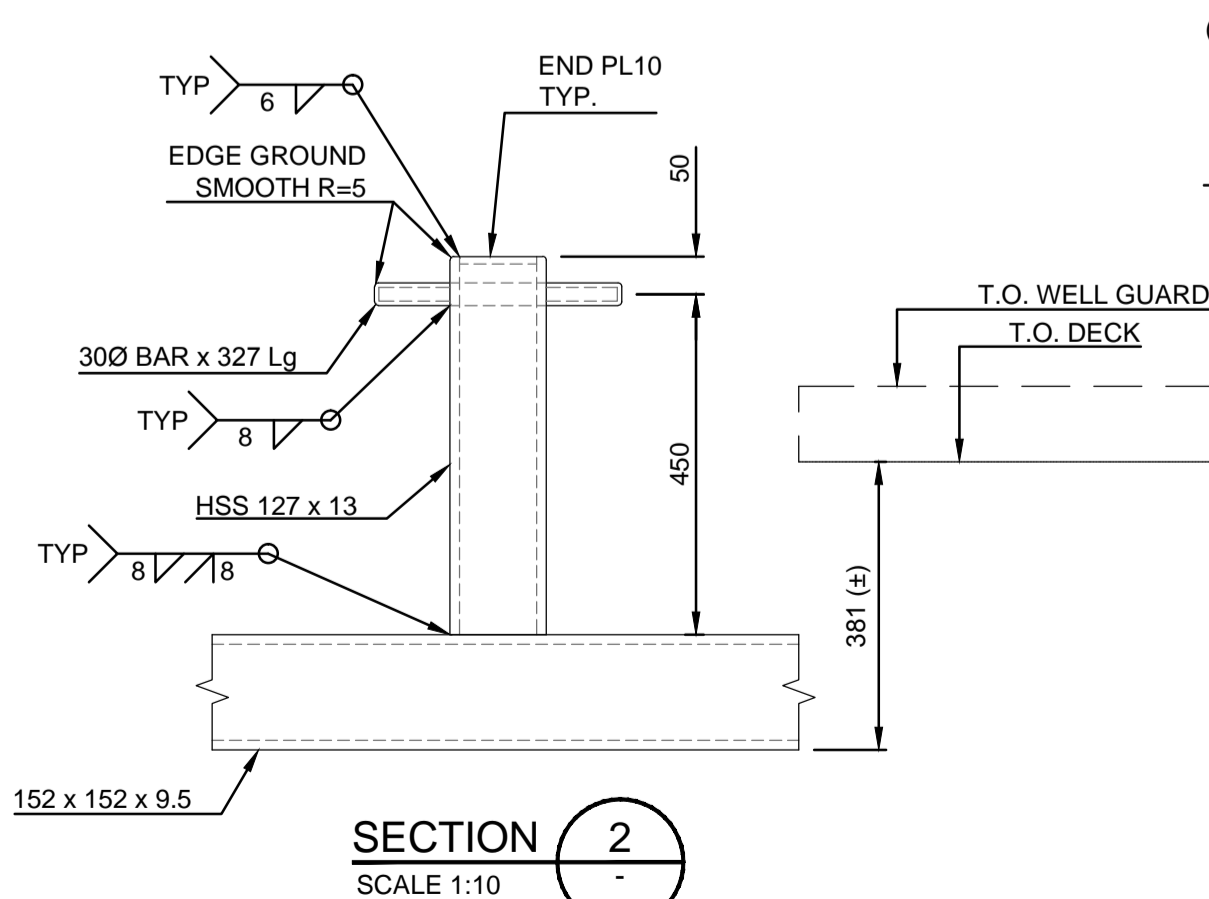
PILE WELL FRAME
SCALE 1:10
[4 REQ'D PER CATAMARAN]



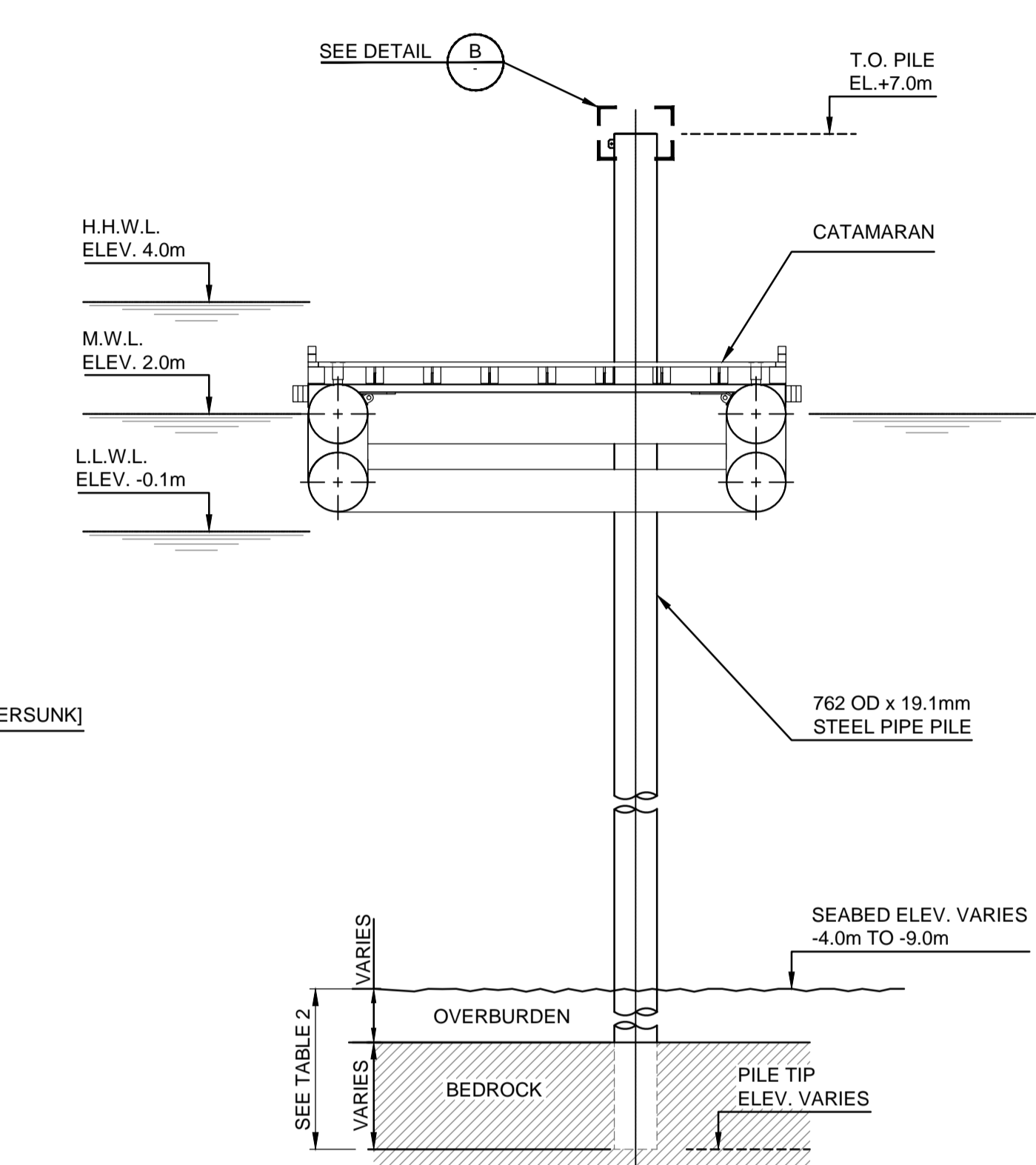
SECTION 1
SCALE 1:5



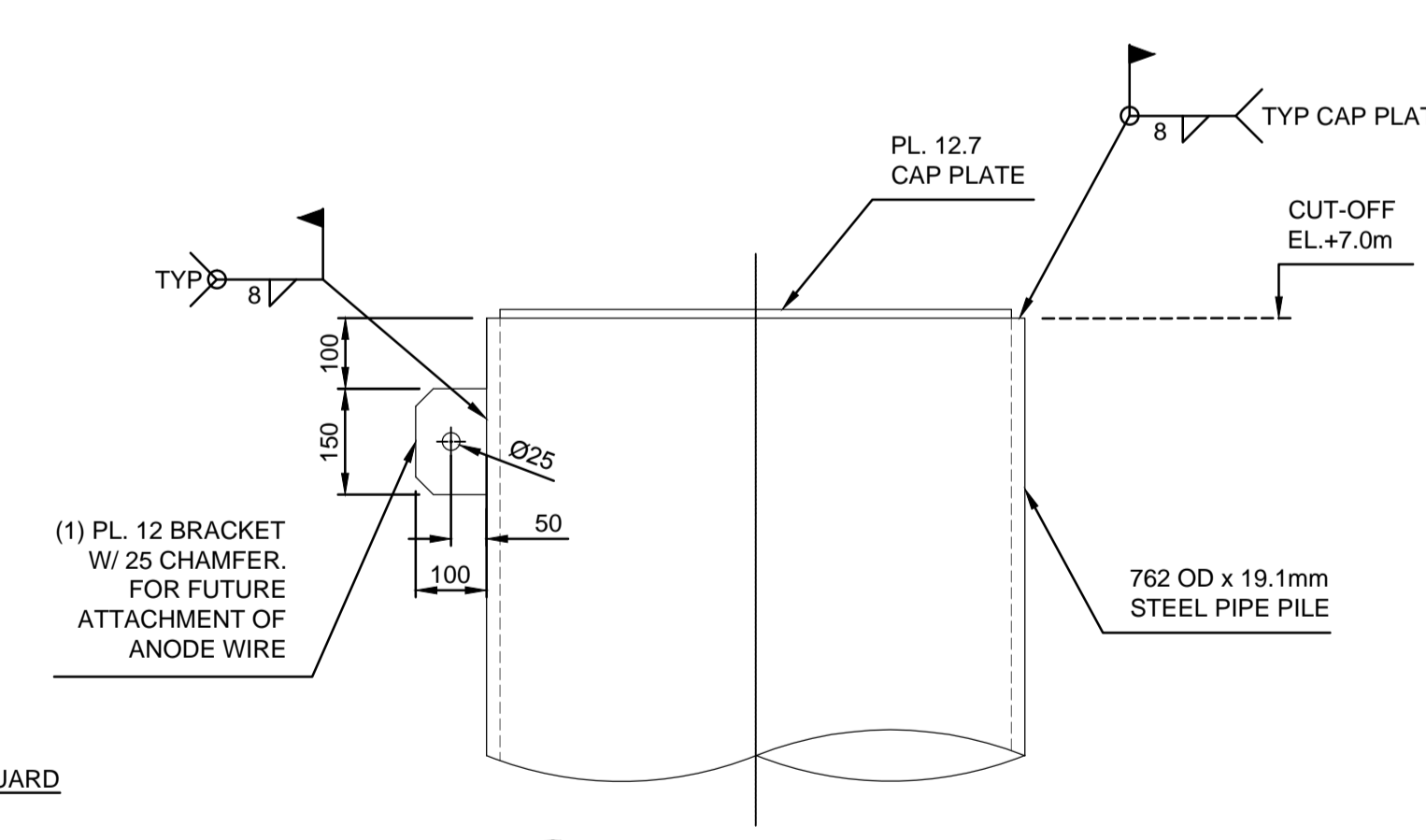
DETAIL C
SCALE 1:10



SECTION 2
SCALE 1:10



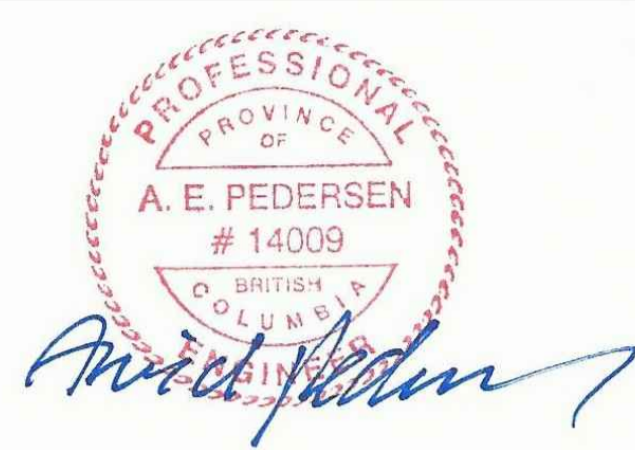
TYPICAL SECTION THROUGH FLOAT
SCALE 1:100



DETAIL B TYPICAL TOP OF DOLPHIN P1 - P8
SCALE 1:10

GENERAL NOTES:
1. REFER TO DWG. -001 FOR GENERAL NOTES.

PRELIMINARY
NOT FOR CONSTRUCTION



DO NOT SCALE DRAWINGS

Revision/Revision	Description/Description	Date/Date
A	ISSUED FOR TENDER	16/03/22

Fisheries & Oceans Canada
Real Property Safety & Security
200 - 401 Burrard Street
Vancouver, Canada, V6C 3S4

Project title/Titre du projet

UCLUELET HARBOUR

Approved by/Approve par
A.P.
Designed by/Concept par
A.P.
Drawn by/Dessine par
WSL
PWGSC Project Manager/Administrateur de Projets TPSGC

PWGSC, Architectural and Engineering Resources Manager/
Ressources Architectural et de Directeur d'ingénierie, TPSGC

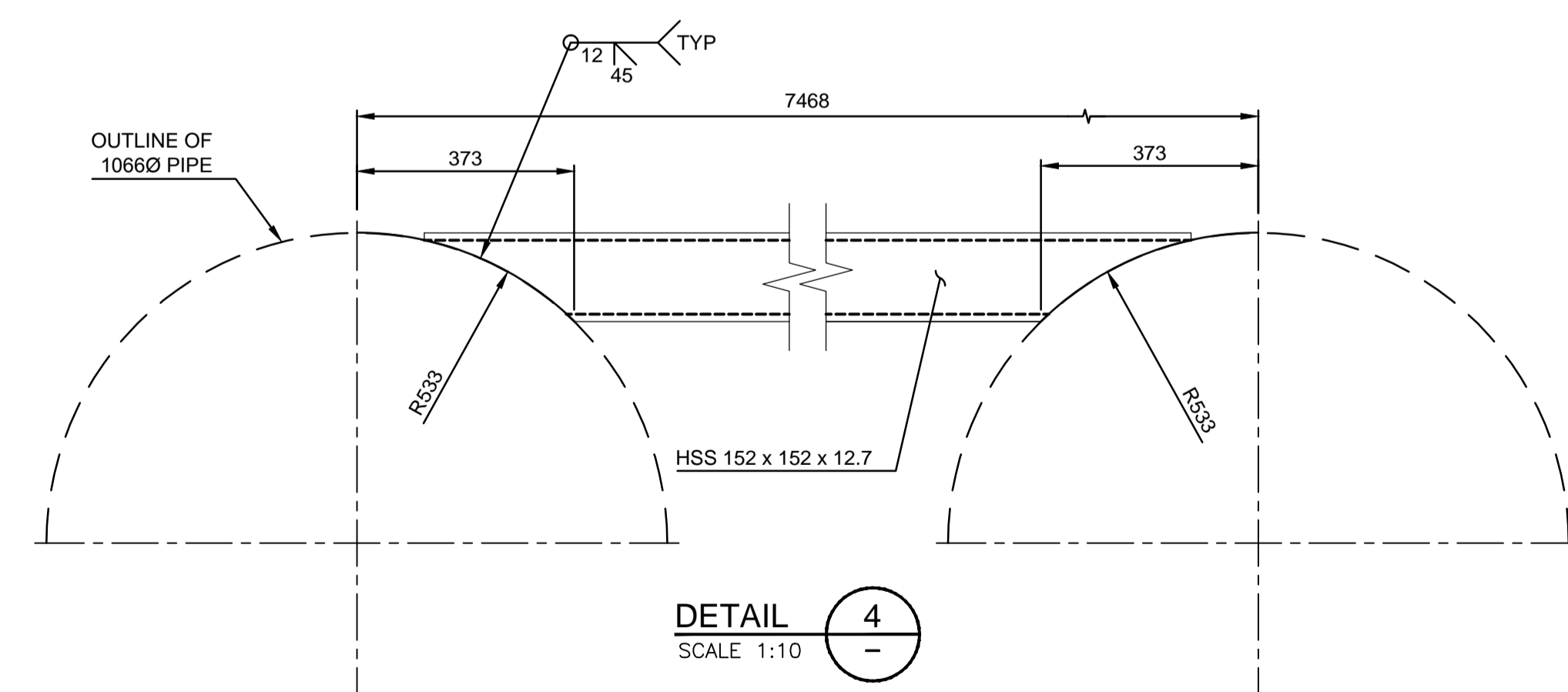
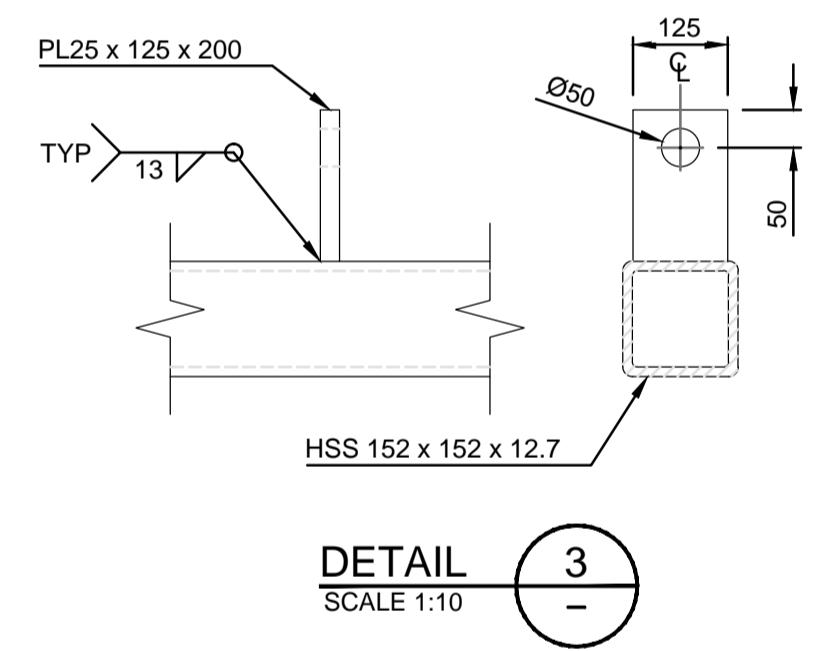
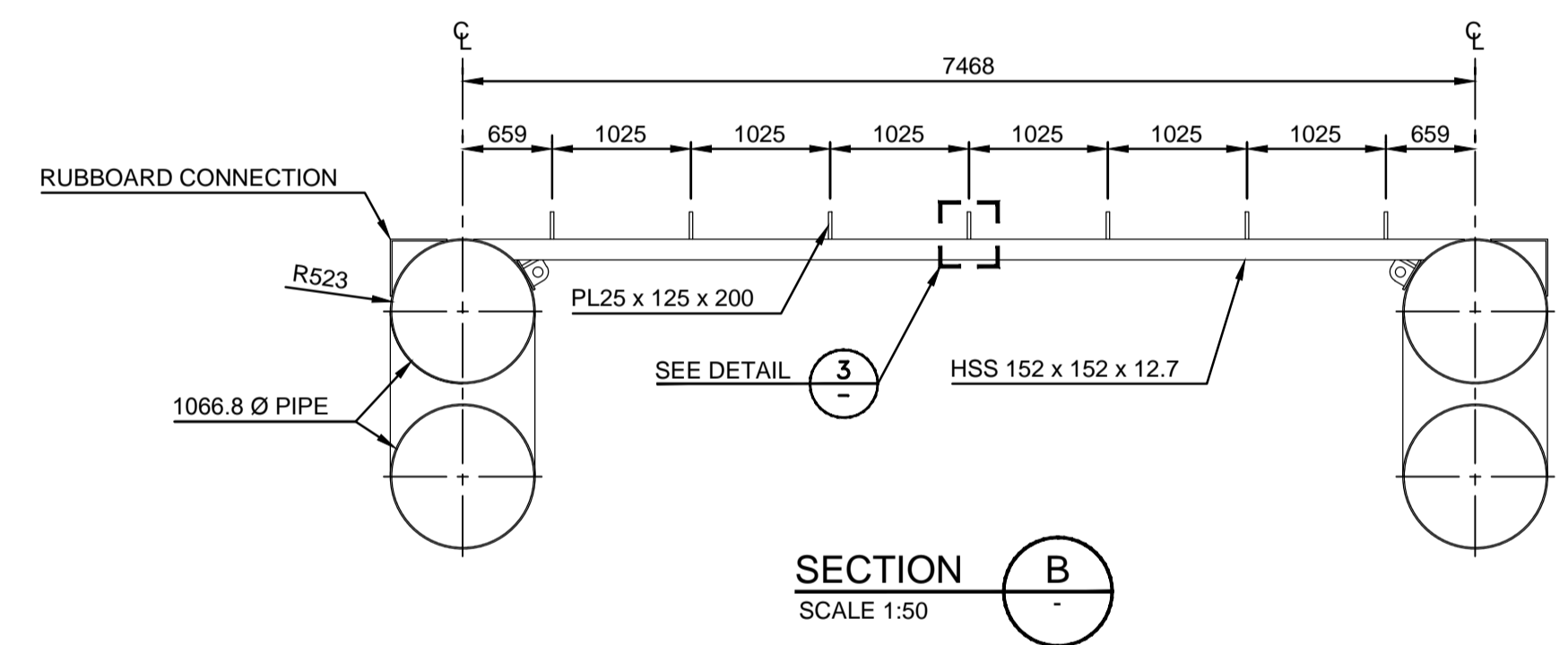
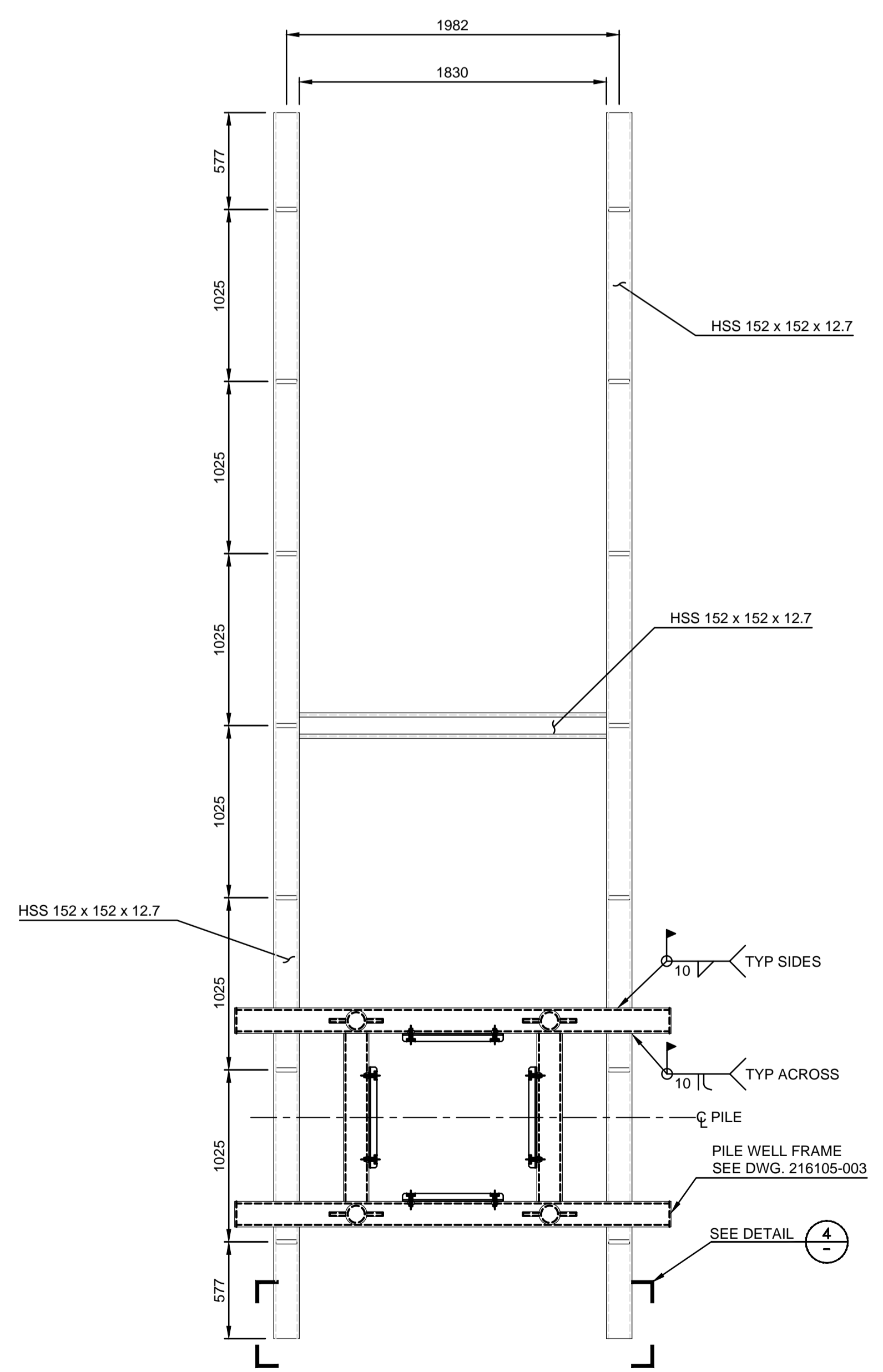
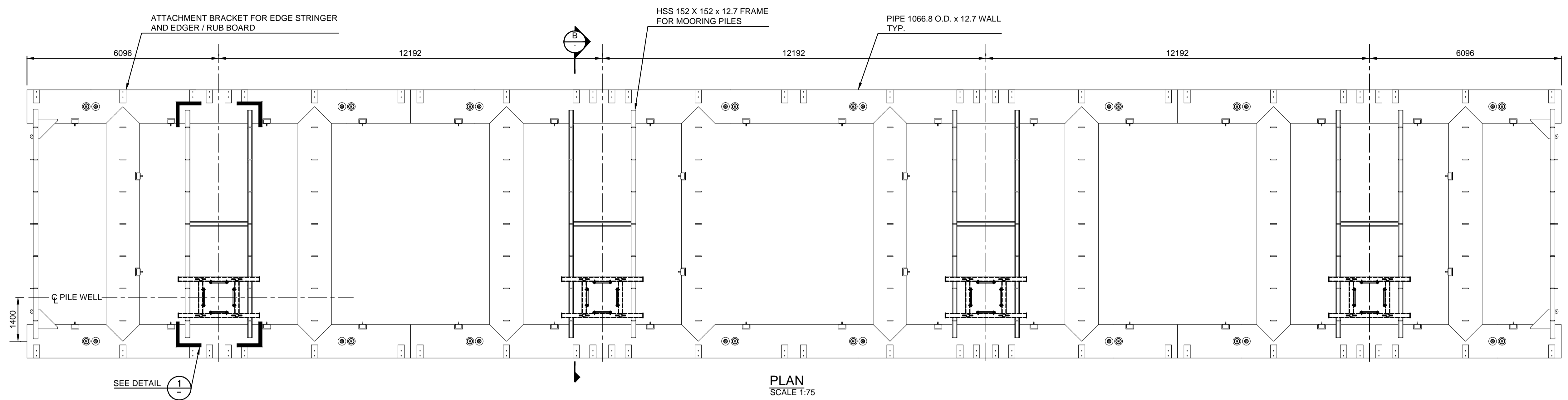
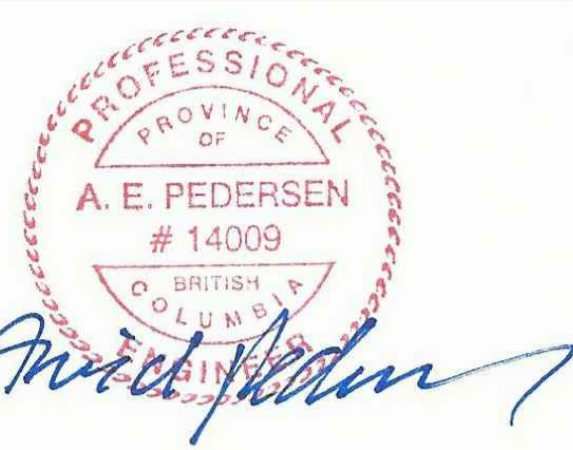
Client/client
SCH
Drawing title/Titre du dessin

PILE WELL & BOLLARD

Project No./No. du projet	Sheet/ Feuille	Revision no./ La Revision no.
216104	003 OF	A

PRELIMINARY
NOT FOR CONSTRUCTION

VJA ENGINEERING
VILLHOLTH JENSEN & ASSOC. LTD.
CONSULTING ENGINEERS
VANCOUVER, B.C.



DETAIL 1
SCALE 1:25

SECTION B
SCALE 1:50

DETAIL 3
SCALE 1:10

DETAIL 4
SCALE 1:10

NOTES:
1. CATAMARAN DESIGNED BY KLA ENGINEERING LTD.
2. PILE FRAME DESIGNED BY VJA, SEE DWG 216104-003

DO NOT SCALE DRAWINGS

Revision/Revison	Description/Description	Date/Date
A	ISSUED FOR TENDER	16/03/22

Fisheries & Oceans Canada
Small Craft Harbours Branch
Pacific Division
200 - 401 Burrard Street
Vancouver, Canada, V6C 3S4

Project title/Titre du projet
UCLUELET HARBOUR
CATAMARAN BREAKWATER

Approved by/Approve par
A.P.
Designed by/Concept par
A.P.
Drawn by/Dessine par
WSL
PWGSC Project Manager/Administrateur de Projets TPSGC

PWGSC, Architectural and Engineering Resources Manager/
Ressources Architectural et de Directeur d'ingénierie, TPSGC

Client/client
SCH
Drawing title/Titre du dessin

160' DUAL LAYER
PILE MOORING WELL
C/W PILE WELL FRAME

Project No./No. du projet 216104	Sheet/ Feuille 320 OF	Revision no./ La Revision no. A
--	------------------------------------	--