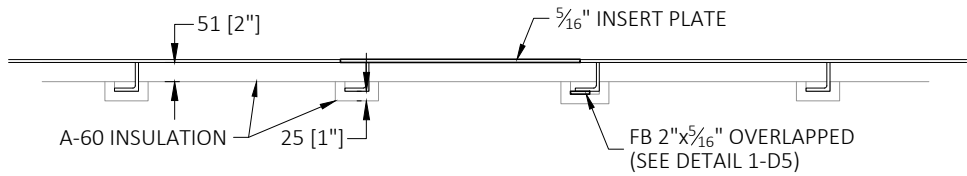
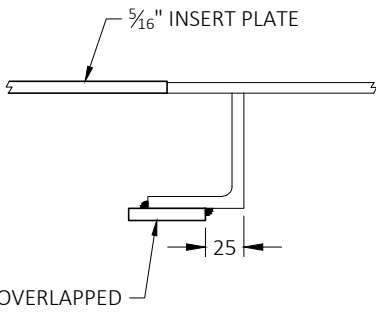
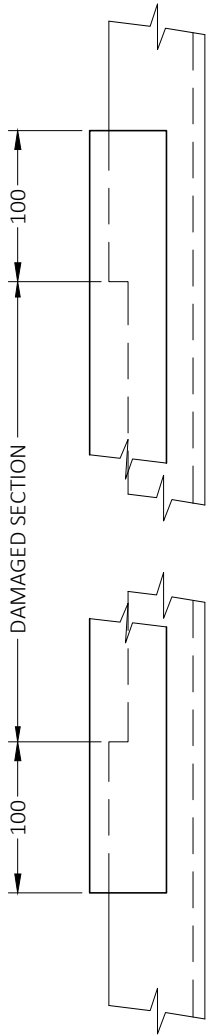


ELEVATION
LONGITUDANAL N.W.T. BULKHEAD
5182 (17' 0") OFF CL PORTSIDE



PLAN VIEW 1-E3
LOWER INSERT PLATE
5182 (17' 0") OFF CL PORTSIDE



DETAIL 1-D5
OVERLAPPED FLAT BAR
FOR STIFFENER REPAIR
SCALE 1:5

RÉVISIONS			
NO.	DATE	DESCRIPTION	PAR / BY
0	2016-04-21	ORIGINAL ISSUE	JP HERNANDIZ
1	2016-05-05	CCG COMMENTS	JP HERNANDIZ
RÉFÉRENCES			
NO.	AUTEUR	TITRE / DESCRIPTION	ID DOCUMENT
1	CCG	STEEL PROFILE & BULKHEADS & SCANTLING	CMG05-108-ST
2	CCG	W.T. & N.W.T. Bulkhead Aft & Floors	CMG05-128-AS
3	CCG	CONSTRUCTION SECTION	CMG05-140-SE
4	CCG	FIRE PROTECTION DETAILS	CMG05-219-DE
5	CCG	THERMAL INSULATION	CMG05-220-MI

NOTES

- DIMENSION IN GREY FOR INFORMATION ONLY. TO BE VALIDATED BY THE CONTRACTOR AFTER THE HVAC UNIT REMOVAL,
- ALL MATERIAL TO BE STEEL LLOYD'S GRADE "A".
- PLATE WELDING TO BE $\frac{3}{16}$ " DOUBLE CONTINUOUS,
- OVERLAPPED FLAT BAR WELDING TO BE $\frac{3}{16}$ " DOUBLE CONTINUOUS,
- STIFFENER WELDING TO BE $\frac{7}{32}$ " STAGGERED. 3"-6".
- WELDING SHALL BE PERFORMED BY A WELDER CERTIFIED BY THE CANADIAN WELDING BUREAU (CWB) IN ACCORDANCE WITH THE REQUIREMENTS OF THE FOLLOWING CANADIAN STANDARDS ASSOCIATION (CSA) STANDARDS, (CSA W47.1 MINIMUM DIVISION LEVEL 2.0)
- MAGNETIC PARTICLE TESTING TO BE PERFORMED ON NEW PLATES WELDING
- ADEQUATE TEMPORARY PROTECTION SHALL PROVIDED FOR ANY EQUIPMENT OR AREAS AFFECTED BY THIS REFIT.