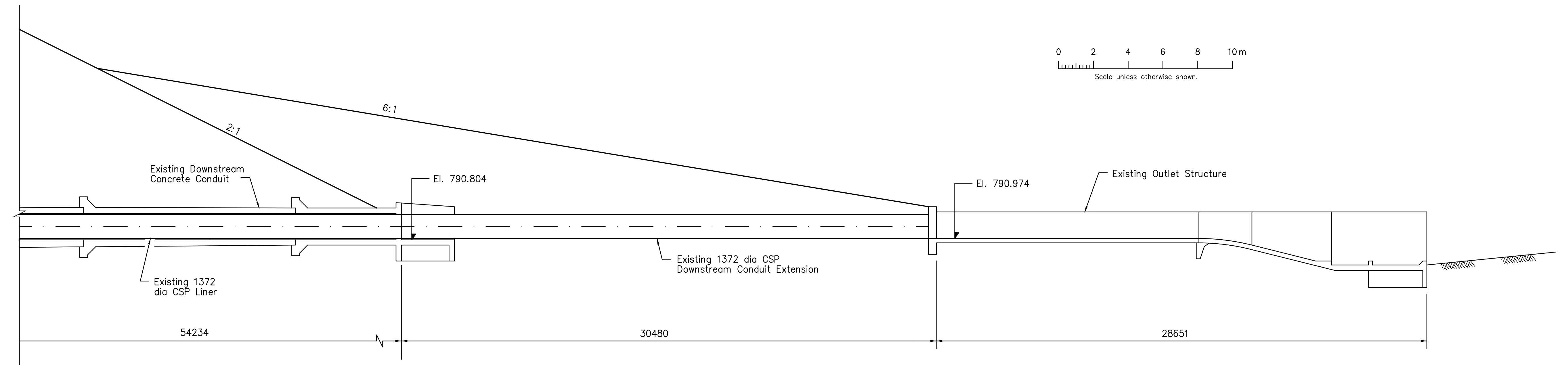
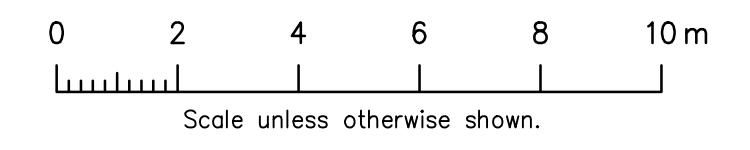


NOTE: For upstream pipe lining details, see sheet 3

PROFILE - UPSTREAM PORTION



PROFILE - DOWNSTREAM PORTION

ALL DIMENSIONS ARE IN MILLIMETRES UNLESS OTHERWISE SHOWN
ALL STATIONING AND ELEVATIONS ARE IN METRES

REFERENCE SYSTEM
 Item number, Detail, Section, etc. numbered consecutively on each sheet.
 Original sheet number, Sheet on which item is indicated and numbered.
 Sheet number on which Detail, Section, etc. is drawn.

Mark	Grid Ref.	Nature of Revision	Date	Eng.	Draft.

Designed <i>CRC</i>	Approved <i>C. Straub</i>
Drawn <i>NV</i>	Position Title <i>DIRECTOR, TECHNICAL SERVICE</i>
Checked <i>CRC GIH</i>	Date <i>20-Jan-97</i>

COMPILED FROM PLAN 206555

PFRA ARAP
 Prairie Farm Rehabilitation Administration / Administration agricole des Prairies

RECORD DRAWING Submitted By: *SM Laughlin* Date: July 10, 2012

DUNCAIRN DAM PROJECT

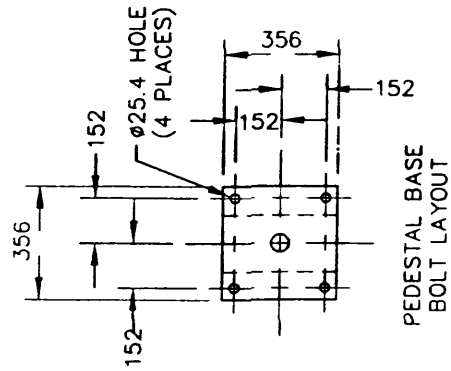
CONTRACT 2 - RIPARIAN OUTLET WORKS REHABILITATION

CENTERLINE PROFILE

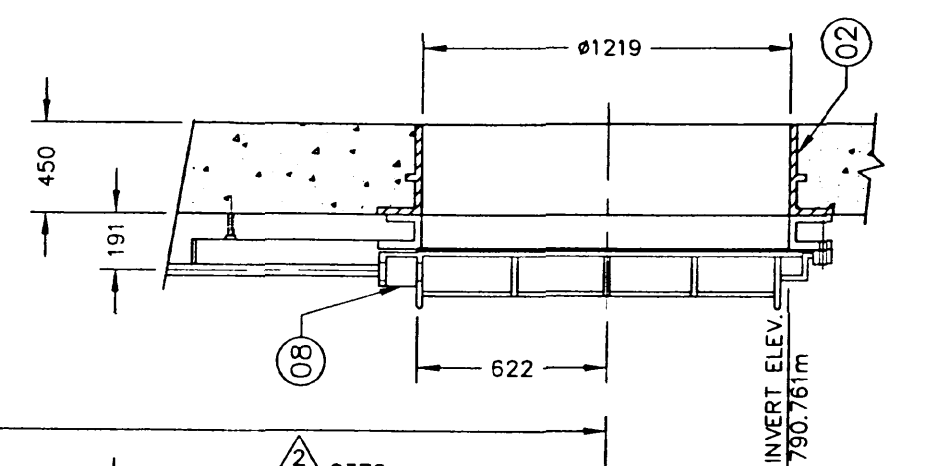
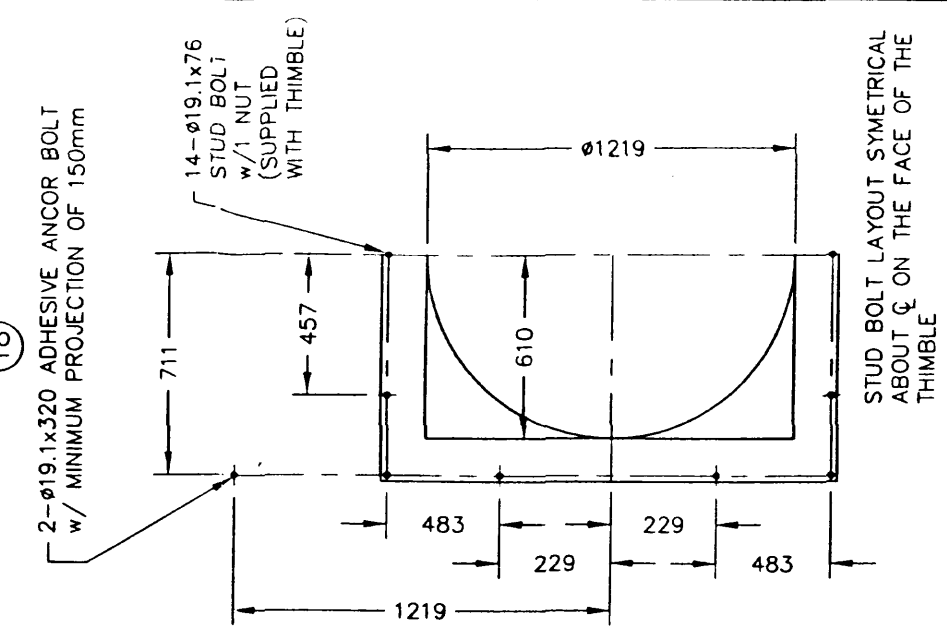
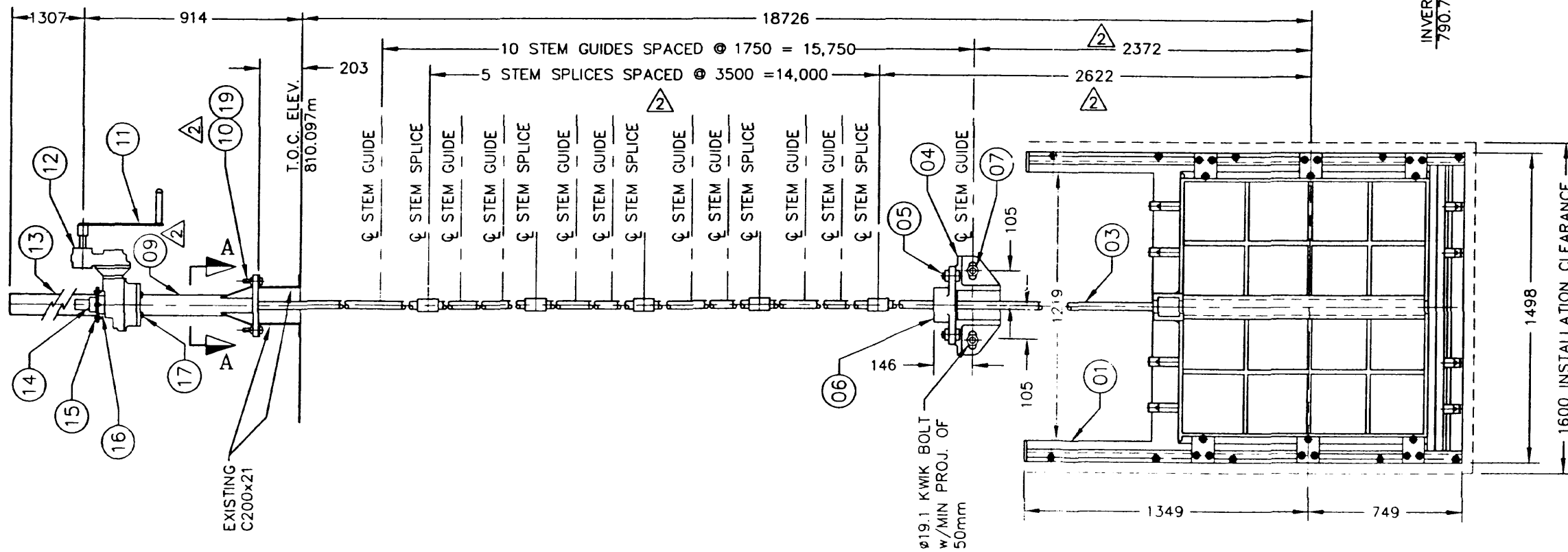
Scale: As Shown Date: Sept/96 Sheet 2 of C206555

NOTES:

- 1) ALL DIMENSIONS ARE IN mm UNLESS NOTED OTHERWISE.
- 2) CASTING TOLERANCE APPLY ON ALL UNMACHINED SURFACES.
- 3) SEE MANUAL G-1000 FOR INSTALLATION AND ADJUSTMENT INSTRUCTION.
- 4) STEM THREAD - MODIFIED SINGLE ACME LEFT HAND 4 THREADS PER 25.4mm
- 5) STEM MATERIAL TO BE STAINLESS STEEL 303.
- 6) DO NOT SCALE DRAWING.
- 7) CONTRACTOR/CLIENT TO VERIFY ALL DIMENSIONS AND ELEVATIONS.
- 8) CAST IRON GATES TO CONSIST OF CAST IRON A126 CLASS B, SEATING FACES TO BE NAVAL BRONZE, & WEDGES TO BE MANGANESE BRONZE.
- 9) CAST IRON GATE TO BE PAINTED:
 - SURFACE PREPARATION SSPC-SP10
 - TWO COATS INTERNATIONAL PAINTS 'INTERGUARD FP' 125-150um PER COAT TOTAL DRY FILM THICKNESS.
- 10) ALL PAINTED SURFACE ARE SUPPLIED WITH MANUFACTURES STANDARD COATING UNLESS OTHERWISE NOTED.
- 11) FASTENERS TO BE STAINLESS STEEL TYPE
- 12) DESIGN HEAD: SEATING - 18.7m
 UNSEATING - 0.0m



SECTION A - A



STUD BOLT LAYOUT SYMETRICAL ABOUT Q ON THE FACE OF THE THIMBLE

BILL OF MATERIALS

No.	QTY	DESCRIPTION	MATL	WT	DWG No.	PART No.
1	1	GATE	CI	1025.0		HD2S048048
2	1	FABRICATED THIMBLE	STL	395.4	7-ST209-B	
3	1	Ø50.8 x 19070 STEM	SSTL	317.4	ST209-001	
4	10	TYPE 1B STEM GUIDE	CI	127.0		AGB01BCFOB
5	20	Ø19.1x76 MACH BOLT w/1NUT	SSTL	6.4		ABM19076S0
6	10	Ø50.8 COLLAR w/BRZ BUSHING	CI	27.2		AGR051BF0B
7	14	Ø19.1x178 KWIKBOLT	SSTL	7.0		ABQ19178S0
8	1	STEM BLOCK (PK-2074)	BRZ	7.1		AR0958BT00
9	1	PEDESTAL (438mm)	PTDSTL	35.4	ST209-002	
10	4	Ø22.2x76 MACH BOLT w/1NUT	SSTL	1.2		ABM22076S0
11	1	381 HANDCRANK ASSEMBLY	STL	3.2		AHC0381000
12	1	LC-18 (IB-7 6:1 & IS-3 3:1)	CI	55.0		ALC0018000
13	1	STEM COVER (1372 lg)	LEX	2.0		ACT1372000
14	1	Ø50.8 STOP NUT	AL	0.4		ALUS510000
15	4	Ø9.5x32 MACH BOLT w/1NUT	SSTL	0.1		ABM10032S0
16	1	STEM COVER ADAPTOR FLANGE	PTDSTL	5.0	ST209-003	
17	4	Ø19.1x38 MACH BOLT w/1W	SSTL	0.1		ABM19038S0
18	2	Ø19.1x320 ADH ANCH BOLT c/w 2 NUTS & 2 WASHERS	SSTL	1.8		ABD19320S0
19	4	Ø22.2 BELVELED WASHER	PTDSTL	0.4		

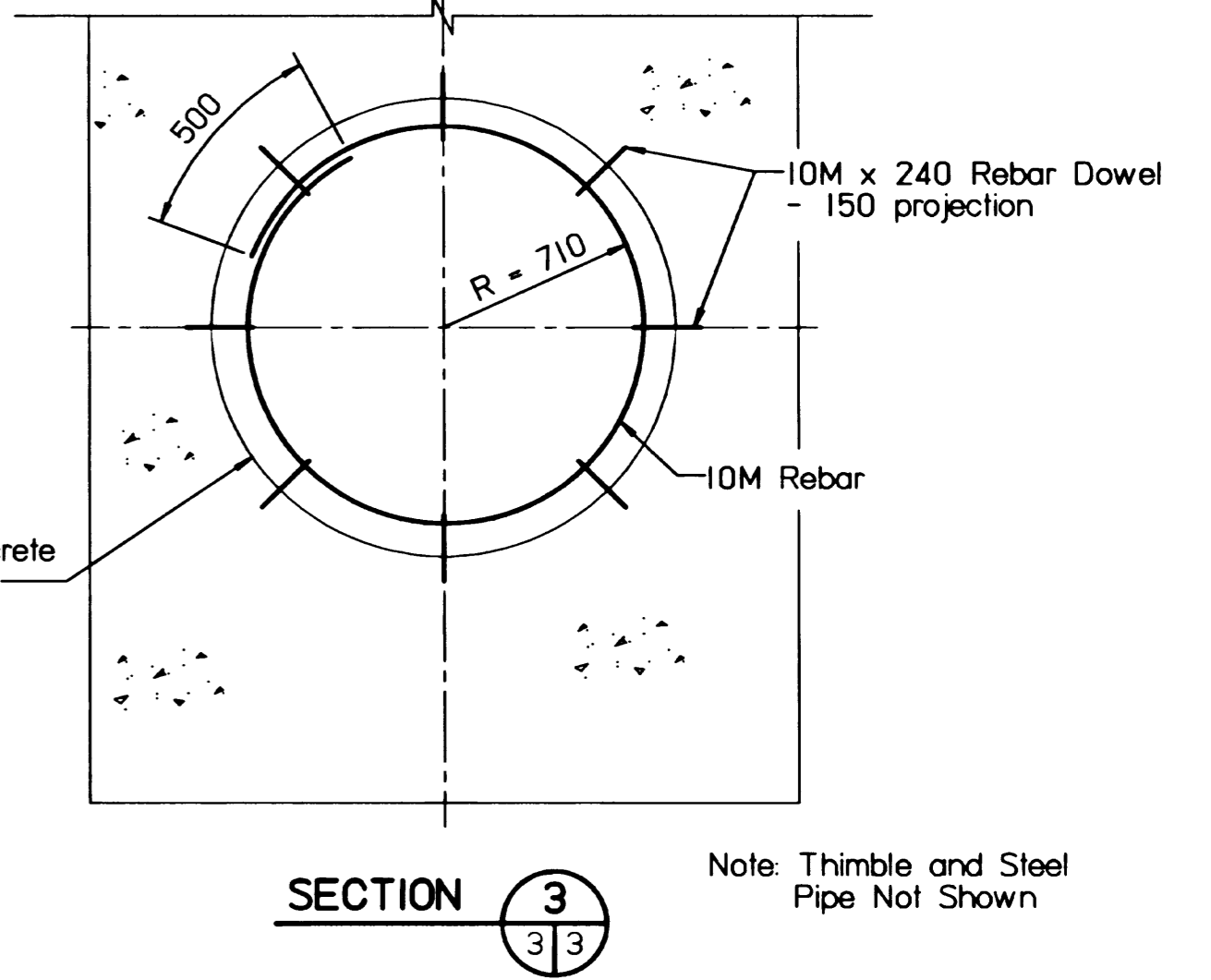
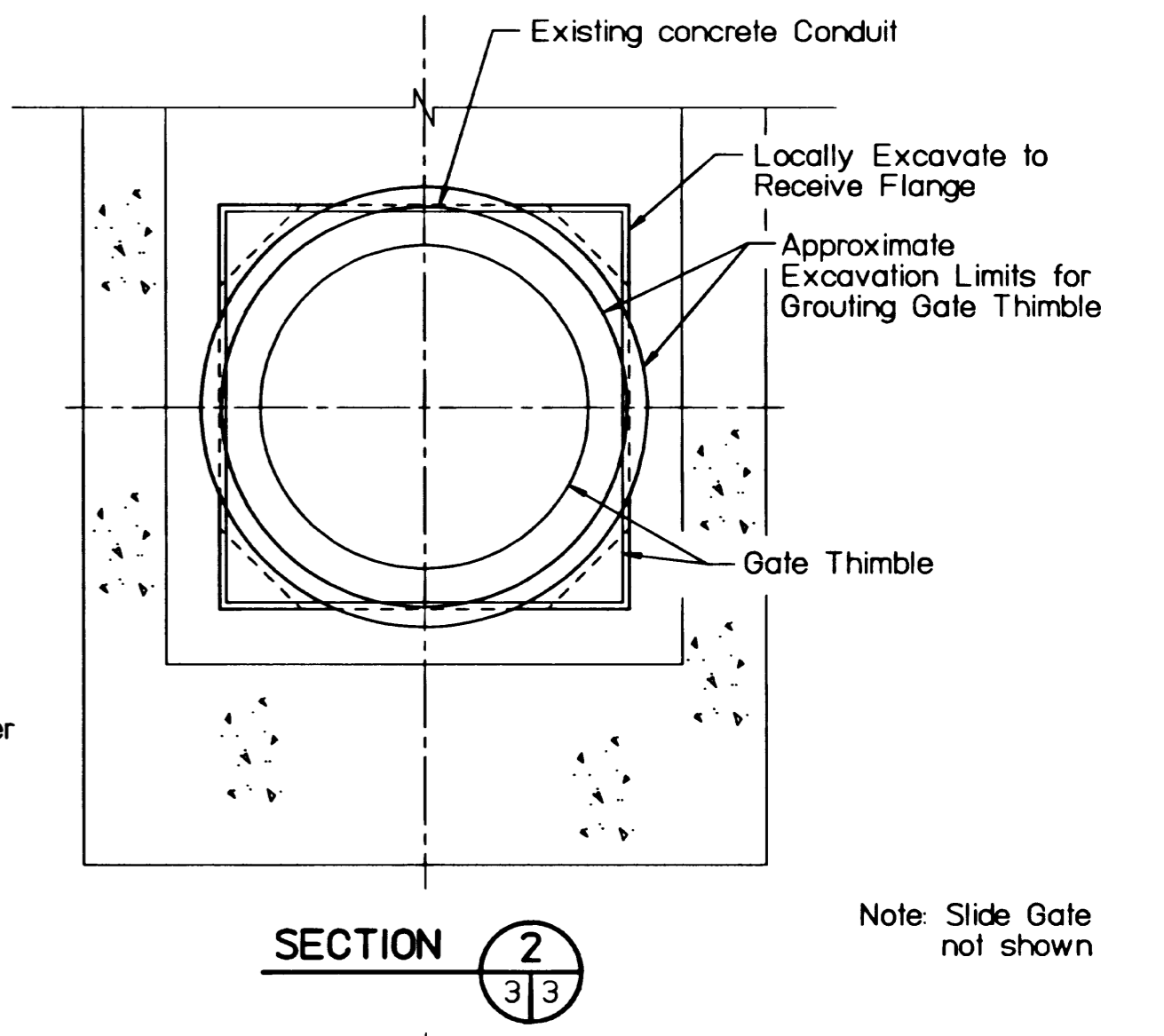
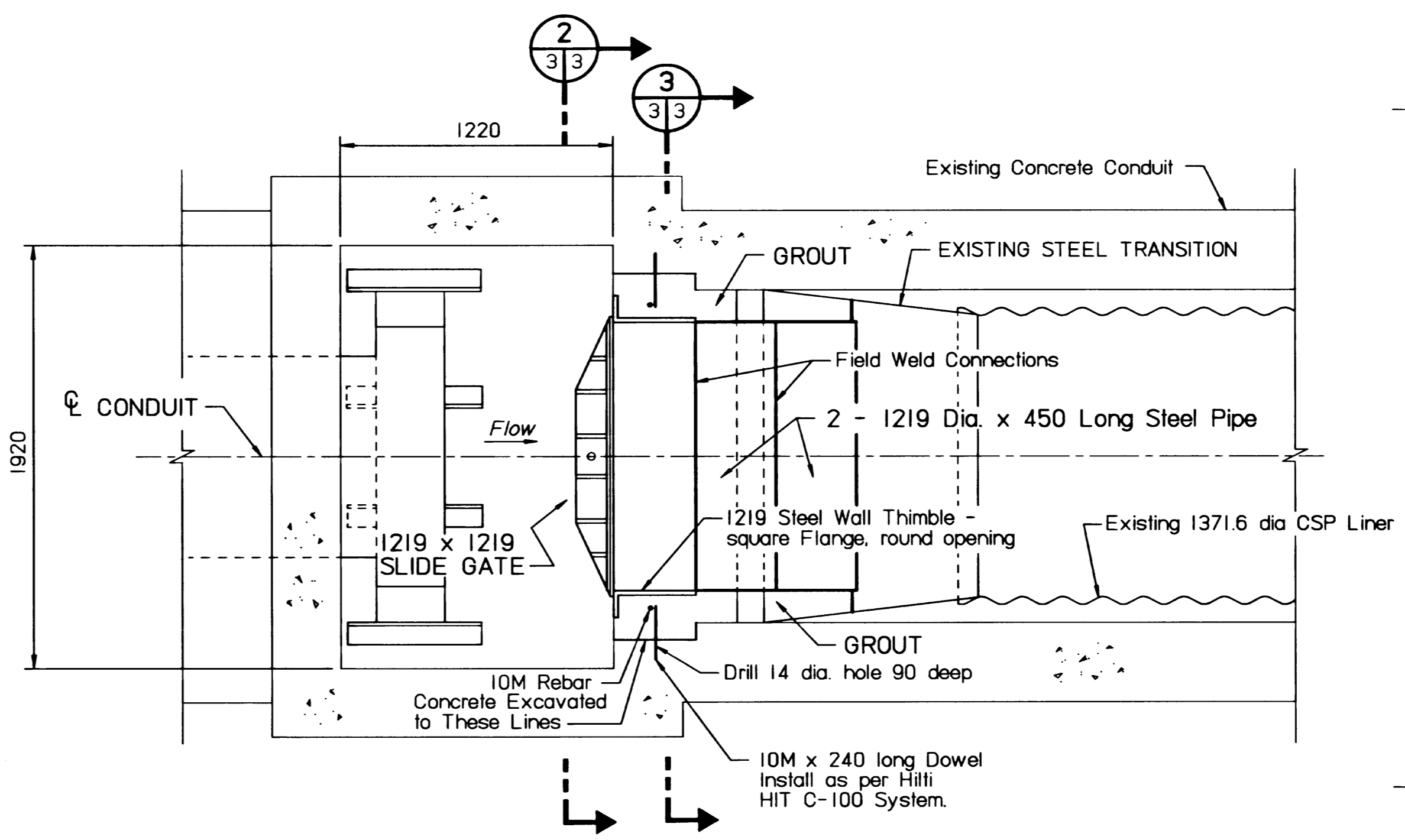
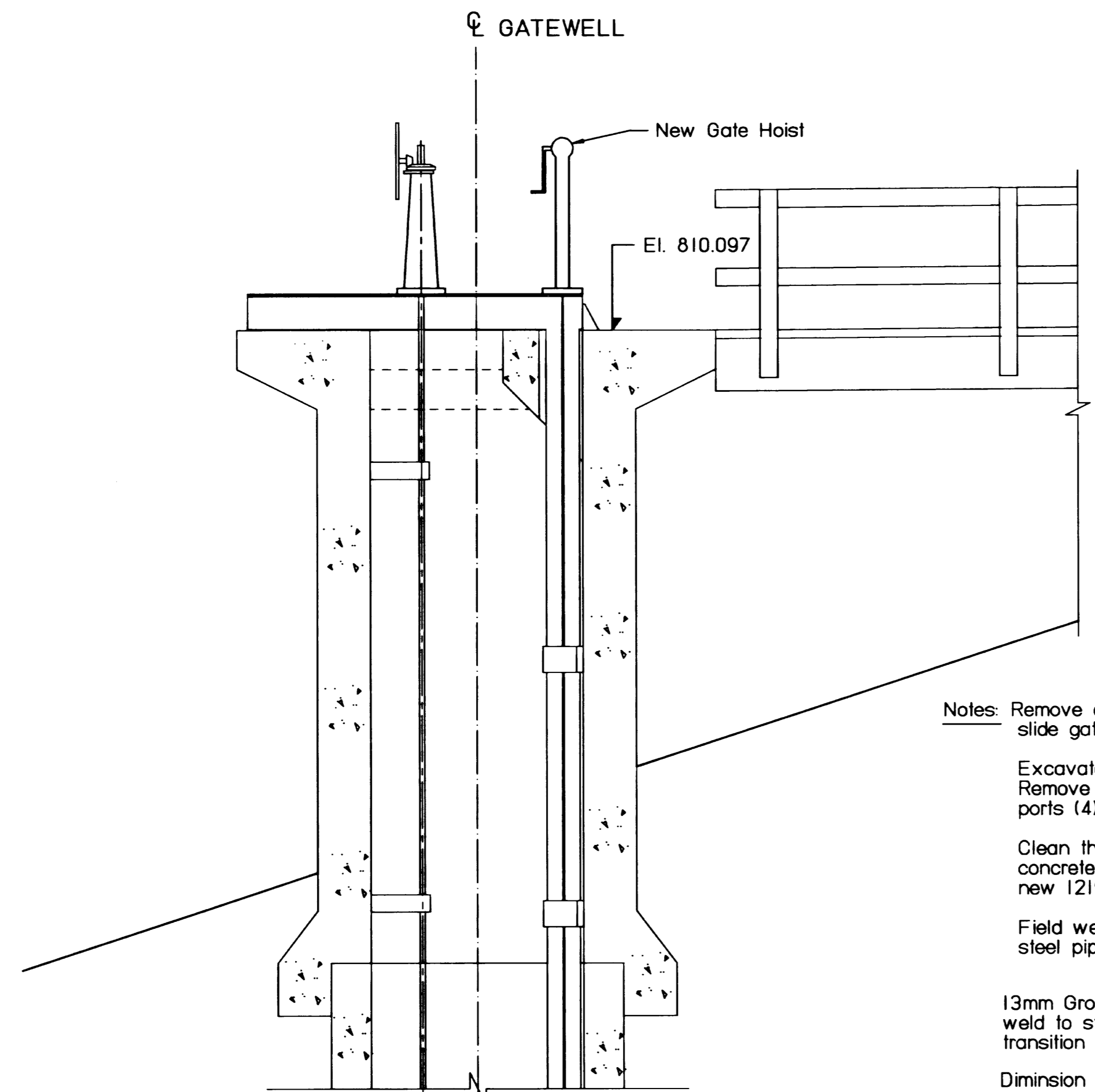
REV	DATE	DESCRIPTION	BY	CK'D
2	970806	STEM GUIDES/SPLICES/PEDESTAL & GENERAL REV.	GJM	NH
1	970710	WEIGHTS ADDED	GJM	NH



THIS PRINT IS THE PROPERTY OF ARMTEC AND IS LENT WITHOUT CONSIDERATION OTHER THAN THE BORROWER'S AGREEMENT THAT IT SHALL NOT BE REPRODUCED, COPIED, LENT OR DISPOSED OF, DIRECTLY OR INDIRECTLY, NOR USED FOR ANY PURPOSE OTHER THAN THAT FOR WHICH IT IS SPECIFICALLY FURNISHED. THIS PRINT IS LENT SUBJECT TO RETURN ON DEMAND.

TITLE		1219mm x 1219mm MODEL 100-30 (501) GATE c/w BRONZE SEATING FACES - FLANGE BACK - RISING STEM NOT SELF CONTAINED - STANDARD BOTTOM			
PROJECT		RIPARIAN OUTLET WORKS REHABILITATION			
CUSTOMER		ARMTEC SASKATOON			
DATE	97/05/22	DR'N	GJM	CK'D	NH
QTY	1				
TAG No.		SCALE		WT.	2017.1
ORDER No.	09-T209	DWG No.	7-ST209-A	REV.	2

PFRA NO. 206885

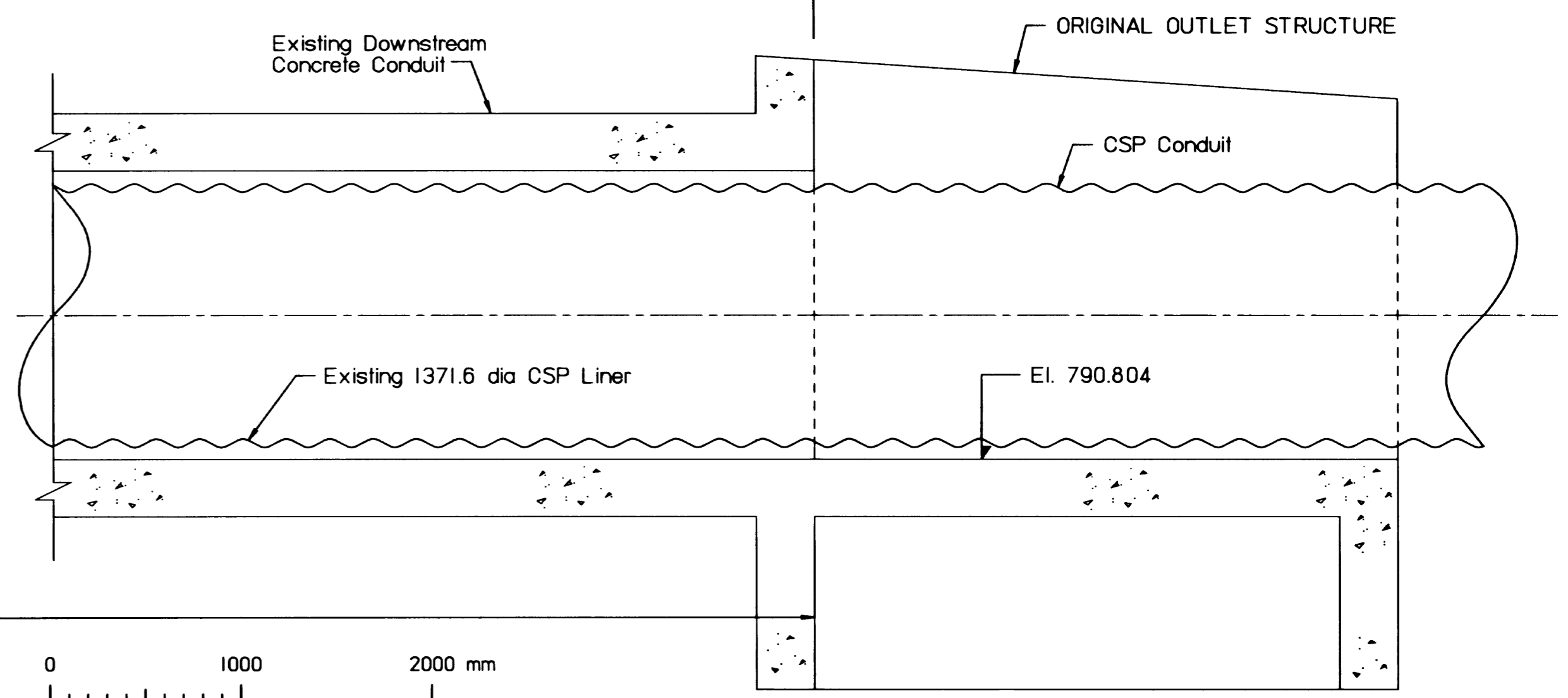
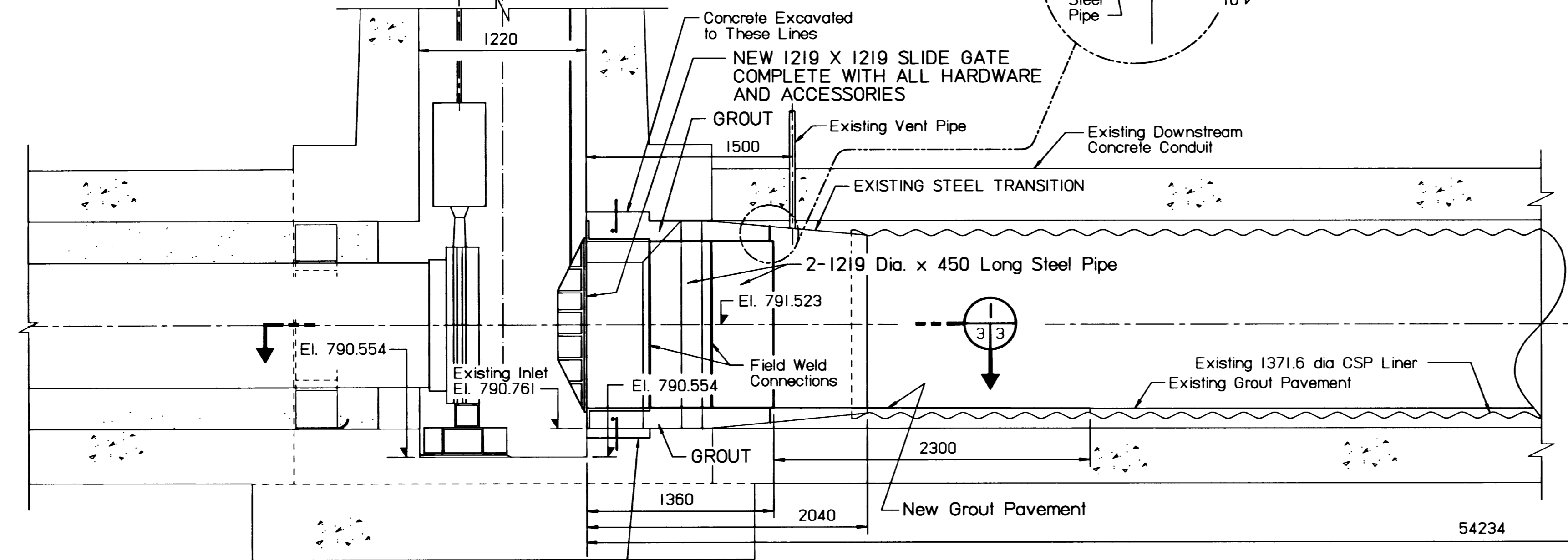
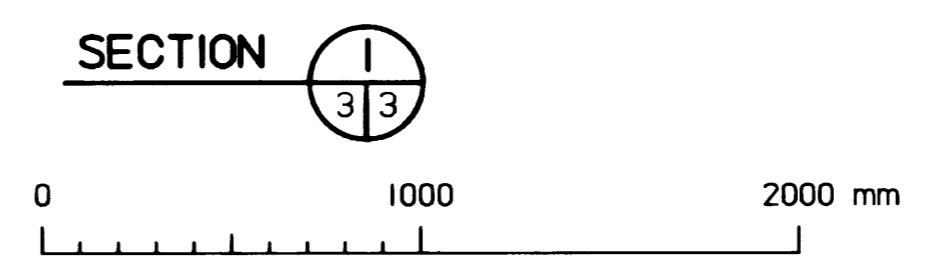
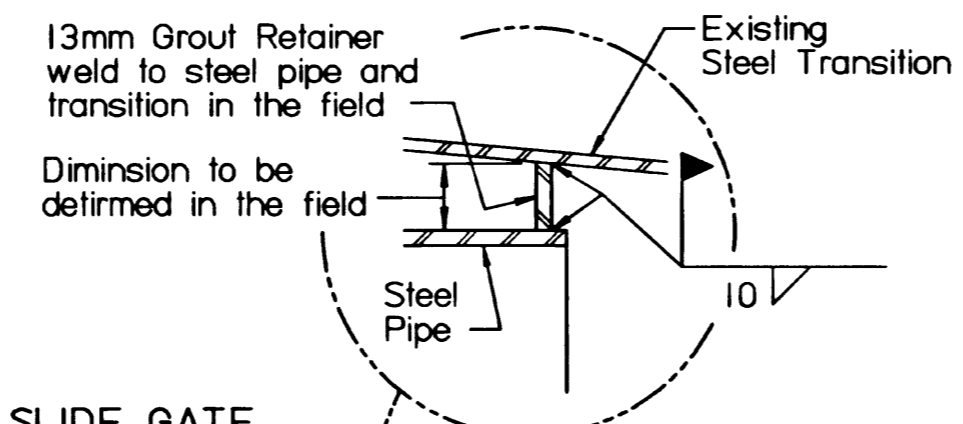


Notes: Remove and dispose of the existing downstream slide gate including all hardware.

Excavate existing concrete materials as shown. Remove all old existing grout nipples and inspection ports (4) and old vent pipe.

Clean the existing steel transition and exposed concrete or grout surfaces in the area of the new 1219 dia steel pipe and thimble.

Field weld inside of thimble and inside of steel pipe sections.



ALL DIMENSIONS ARE IN MILLIMETRES UNLESS OTHERWISE SHOWN ALL STATONING AND ELEVATIONS ARE IN METRES

REFERENCE SYSTEM

Item number, Detail, Section, etc. numbered consecutively on each sheet

Originating sheet number, Sheet on which item is indicated and numbered

Sheet number on which Detail, Section, etc. is drawn

Mark	Grid Ref.	Nature of Revision	Date	Eng.	Draft.

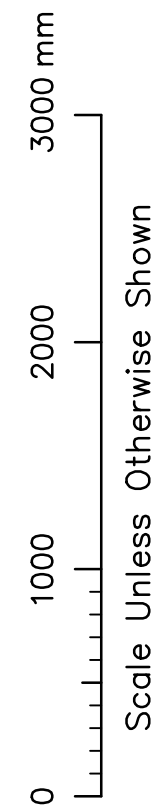
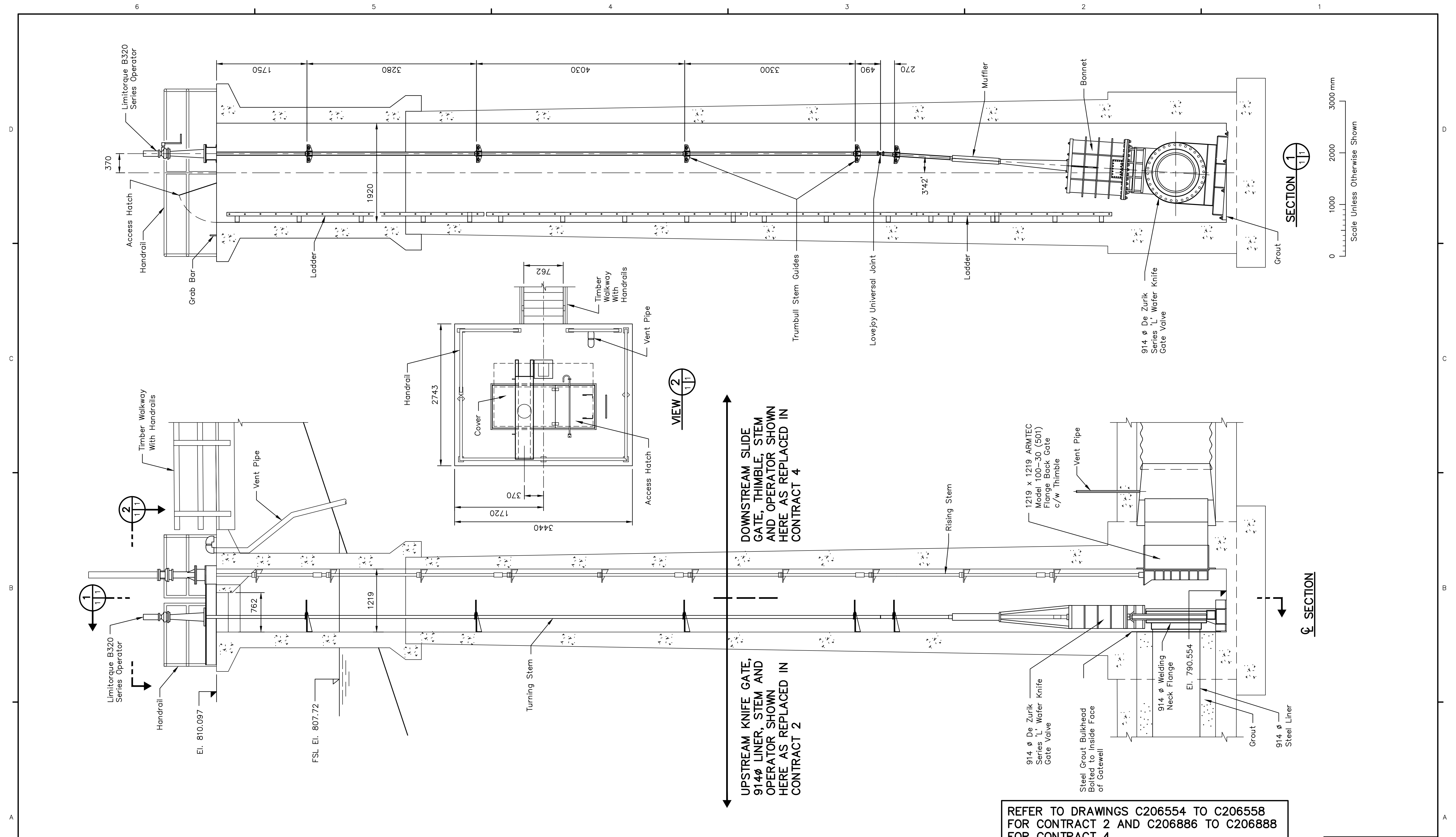
Designed	C.R.C.	Approved	<i>[Signature]</i>
Drawn	G.B.L.	Position Title	DIRECTOR, TECHNICAL SERVICE
Checked	C.R.C.	Date	24-Oct-97

Agriculture and Agri-Food Canada / Agriculture et Agroalimentaire Canada

PFRA ARAP

Prairies Farm Rehabilitation Administration / Administration du rétablissement agricole des Prairies

DUNCAIRN DAM PROJECT			
CONTRACT 4 - RIPARIAN OUTLET WORKS REHABILITATION			
DOWNSTREAM SLIDE GATE REPLACEMENT			
Scale	As Shown	Date	Oct/97
Sheet	3	of	206888



REFER TO DRAWINGS C206554 TO C206558 FOR CONTRACT 2 AND C206886 TO C206888 FOR CONTRACT 4

RECORD DRAWING

ALL DIMENSIONS ARE IN MILLIMETRES UNLESS OTHERWISE SHOWN ALL STATIONING AND ELEVATIONS ARE IN METRES

REFERENCE SYSTEM
 Item number, Detail, Section, etc. numbered consecutively on each sheet.
 Originating sheet number. Sheet on which item is indicated and numbered.
 Sheet number on which Detail, Section, etc. is drawn.

Mark	Grid Ref.	Nature of Revision	Date	Eng.	Draft.

Designed	Approved
Drawn	Position Title
Checked	Date
RM	July 10, 2012
	Manager, Capital Projects

Agriculture and Agri-Food Canada / Agriculture et Agroalimentaire Canada
PFRA ARAP
 Prairie Farm Rehabilitation Administration / Administration du rétablissement agricole des Prairies

DUNCAIRN DAM PROJECT			
GATEWELL DETAILS SHOWING UPSTREAM KNIFE GATE (CONT. 2) AND DOWNSTREAM SLIDE GATE (CONT. 4)			
Scale	Date	Sheet	
As Shown	June 2009	1 of 1	C208345