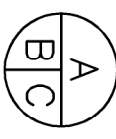




04	ISSUED FOR TENDER	14/06/2016
03	RE-ISSUED FOR 99% REVIEW	06/06/2016
02	ISSUED FOR 99% REVIEW	29/04/2016
01	ISSUED FOR 66% REVIEW	08/03/2016
revision		date

Do not scale drawings.
Verify all dimensions and conditions on site and immediately notify the engineer of all discrepancies.

 A No. du détail
B drawing no. – where detail required
C drawing no. – où détail exigé
C dessin no. – où détail

Project Name
titre du projet
GRAVENHURST Ontario
BEAVER CREEK INSTITUTION

**SITE DEVELOPMENT AND
PARKING EXPANSION**

drawing title
titre du dessin
**SITE LIGHTING
PLAN**

LAYOUT PLAN (1 OF 2)

drawn by
dessiné par
SW

designed by
conçu par
SW

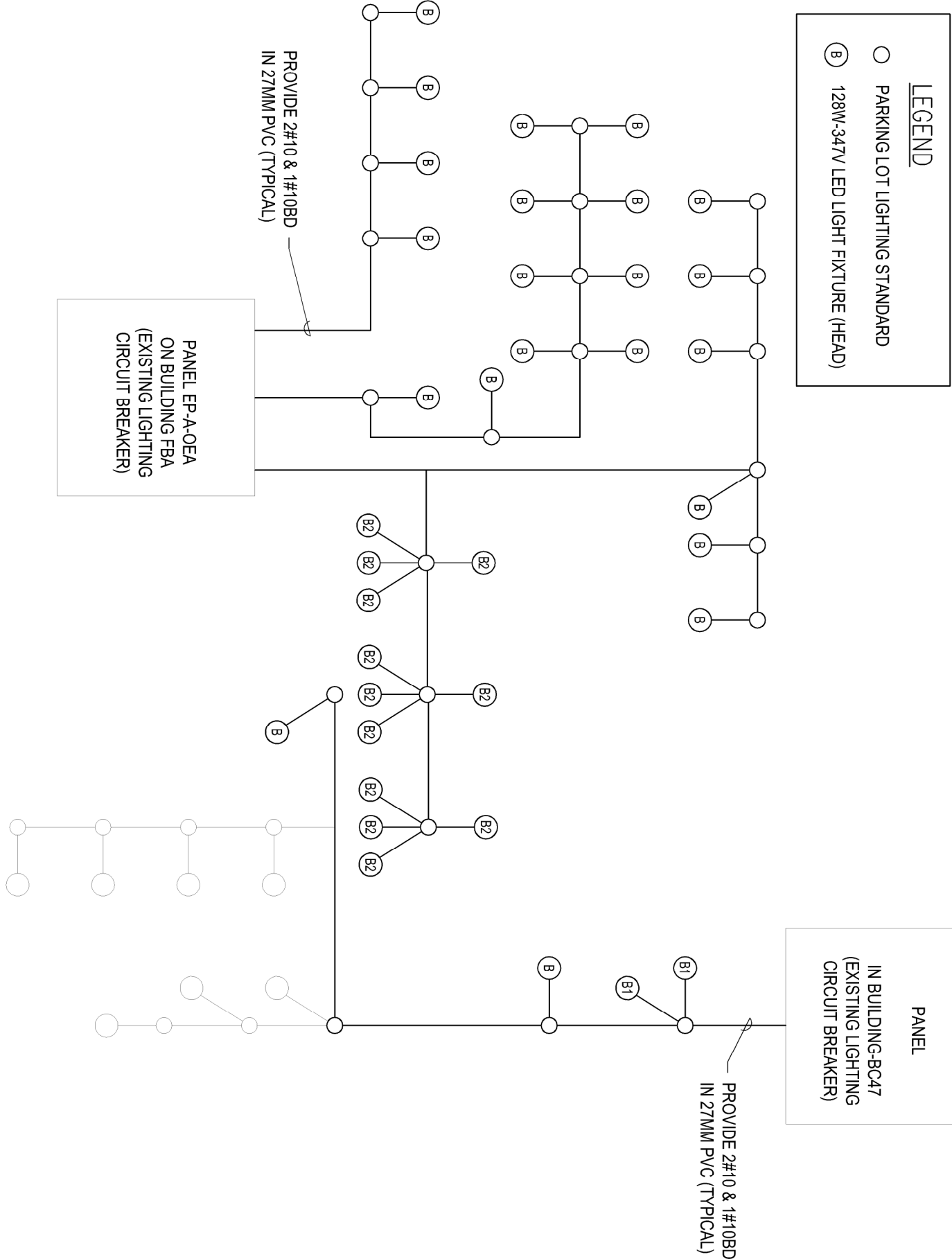
approved by
approuvé par
NM

tender
soumission
project manager
admnistrateur de projet

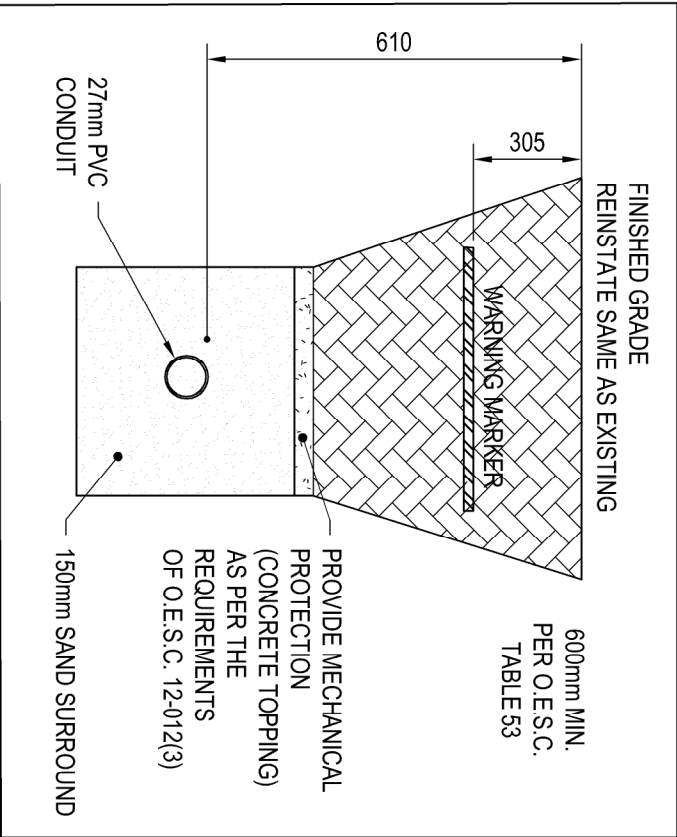
project date
date du projet
2016/03/04

project no.
no. du projet
R.079593.001

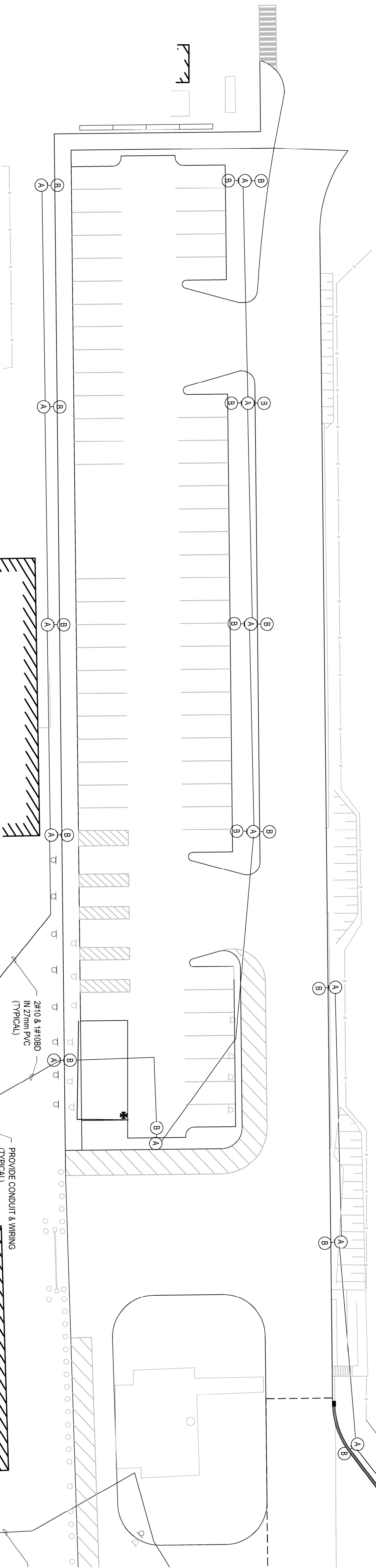
drawing no.
dessiné no.
E200



SINGLE LINE DIAGRAM



TYPICAL LIGHTING DUCT BANK DETAIL



- NOTES**
1. ALL CONCRETE BASES BY STRUCTURAL CONTRACTOR.
 2. REUSE EXISTING LIGHTING CONTROL.

- LEGEND**
- 9.1M STEEL POLE COW BARRIER, TAPERED 12GA. WALL THICKNESS, WELDED TO THE MONORAIL PLATE, CONCRETE BASE BY STRUCTURAL CONTRACTOR. MATCH EXISTING LIGHTING CONTROL.
 - SINGLE HEAD LED AREA LIGHT FIXTURE. REFER TO SPECIFICATION.
 - DOUBLE HEAD LED AREA LIGHT FIXTURES. REFER TO SPECIFICATION.
 - FOUR HEAD LED AREA LIGHT FIXTURES. REFER TO SPECIFICATION.

LEGEND

CONTRACT DRAWINGS

CONTRACT DRAWINGS FOR ELECTRICAL WORK ARE IN PART DIAGRAMATIC, INTENDED TO CONVEY THE SCOPE OF WORK AND GENERAL ARRANGEMENT FOR EQUIPMENT, CONDUIT AND OUTLETS. CONTRACTOR TO COORDINATE LAYOUT OF ELECTRICAL SYSTEMS WITH ARCHITECTURAL, STRUCTURAL, AND MECHANICAL BUILDING. CONTRACTOR TO PROVIDE ALL NECESSARY SUPPLIES AND PROVIDE ADDITIONAL MATERIALS AND LABOUR TO FACILITATE THE WORK. NO EXTRA PAYMENTS ARISING FROM FAILURE TO MAKE THIS COORDINATION WILL BE CONSIDERED.