

LOCALISATION

- NOTES GÉNÉRALES:
1. ALL MEASUREMENTS MUST BE VALIDATED ON SITE BY THE CONTRACTOR BEFORE THE PRODUCTION.
  2. ALL WELDS MUST BE MADE BY A COMPANY CERTIFIED BY THE CANADIAN WELDING BUREAU IN COMPLIANCE TO THE STANDARD W59. THE WELDERS AND THE FIRM WILL ALSO BE IN COMPLIANCE WITH THE W47.1 STANDARD.
  3. ALL THE STEELS WILL BE IN COMPLIANCE WITH THE CAN/CSA-G40.21 STANDARD, GRADE 300W FOR SHEETS AND GRADE 350W FOR OPEN PROFILES AND TUBES.
  4. BOLTED CONNECTIONS WILL BE IN STAINLESS STEEL.
  5. ALL STRUCTURES EXPOSED TO WEATHER WILL BE HOT DIPPED GALVANIZED WITH A ZINC COAT OF 600 G/M<sup>2</sup> IN COMPLIANCE WITH CAN/CSA-G164 STANDARD.
  6. WHEN NOT MENTIONED, ALUMINUM USED IS 6061 T-6
  7. ALL THE EQUIPMENTS PRESENTED ON THE PLAN COMPLY WITH CSA Z 259.16 DESIGN OF ACTIVE FALL PROTECTION SYSTEMS AND CSA Z259.13 FLEXIBLE HORIZONTAL LIFELINE SYSTEMS.

-	-	-
2016-02-05	ISSUED FOR TENDER	MW
2016-01-29	FOR DISCUSSION	JTC
A M 2	MODIFICATION	PAR
---	ISSUED DATE	-

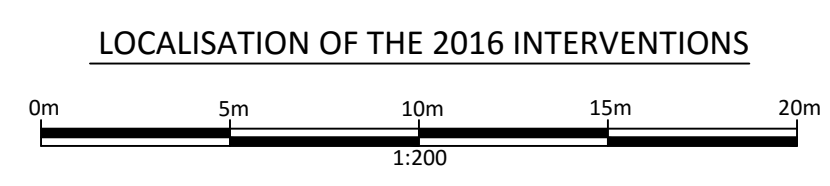
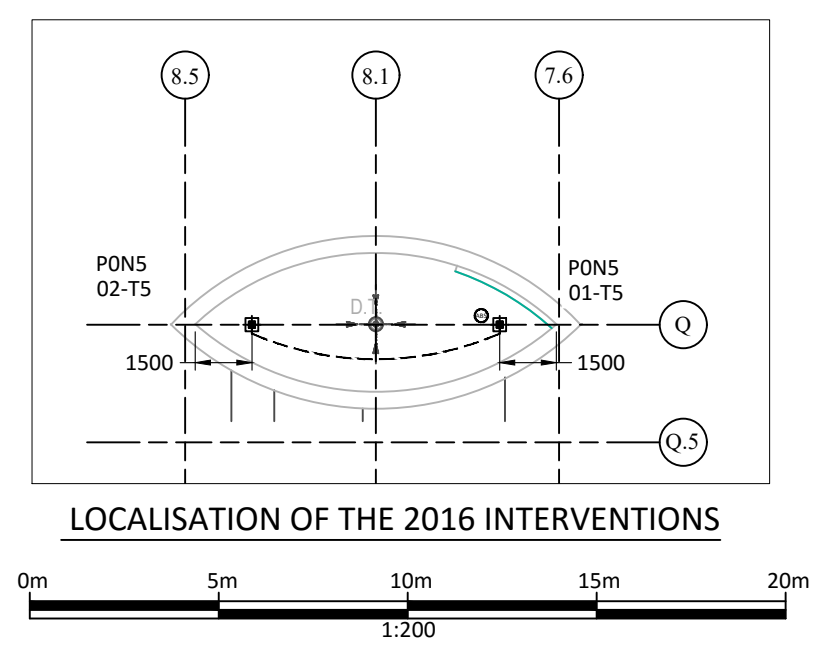
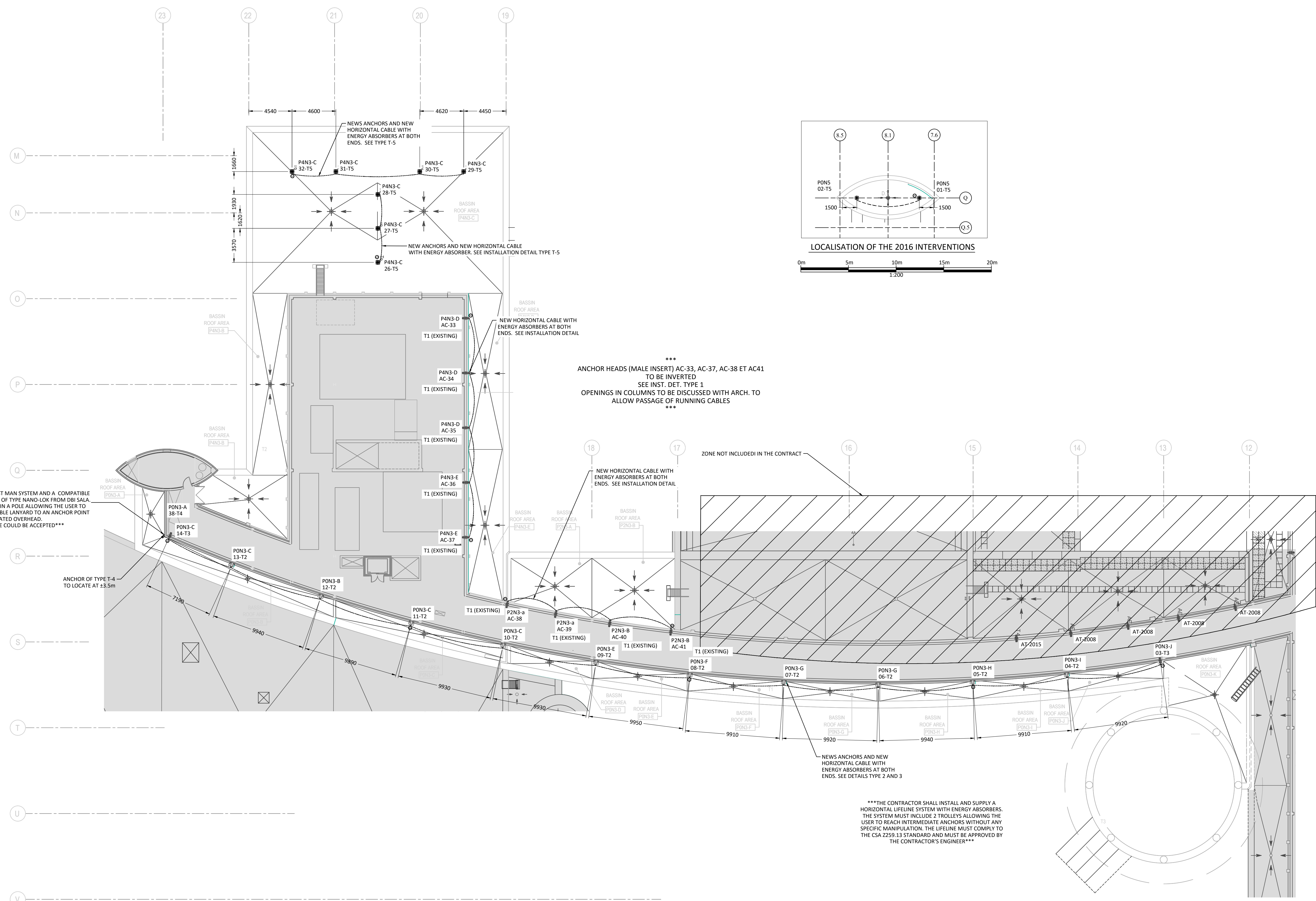
CLIENT:  
**CANADIAN SPACE AGENCY**

PROJET:  
**INSTALLATION OF SAFETY ANCHORS ON THE ROOF**

TITRE:  
**SAFETY ANCHORS SUMMARY OF THE PREVIOUS PHASES**



REF. CLIENT:	-	DATE:	2016-02-05
PROJECT:	# 2015-178	DRAWING: S-E	VÉRIF.: -
SCALE:	1:600	PAGE:	1 OF 4
SIZE:	ARCH D (24" X 36")		



\*\*\*SUPPLY THE KIT FIRST MAN SYSTEM AND A COMPATIBLE RETRACTABLE LANYARD OF TYPE NANO-LOK FROM DBI SALA. THE KIT SHALL CONTAIN A POLE ALLOWING THE USER TO ATTACH THE RETRACTABLE LANYARD TO AN ANCHOR POINT LOCATED OVERHEAD. EQUIVALENCE COULD BE ACCEPTED\*\*\*

ANCHOR HEADS (MALE INSERT) AC-33, AC-37, AC-38 ET AC41 TO BE INVERTED  
SEE INST. DET. TYPE 1  
OPENINGS IN COLUMNS TO BE DISCUSSED WITH ARCH. TO ALLOW PASSAGE OF RUNNING CABLES

\*\*\*THE CONTRACTOR SHALL INSTALL AND SUPPLY A HORIZONTAL LIFELINE SYSTEM WITH ENERGY ABSORBERS. THE SYSTEM MUST INCLUDE 2 TROLLEYS ALLOWING THE USER TO REACH INTERMEDIATE ANCHORS WITHOUT ANY SPECIFIC MANIPULATION. THE LIFELINE MUST COMPLY TO THE CSA Z259.13 STANDARD AND MUST BE APPROVED BY THE CONTRACTOR'S ENGINEER\*\*\*

- NOTES GÉNÉRALES:
1. ALL MEASUREMENTS MUST BE VALIDATED ON SITE BY THE CONTRACTOR BEFORE THE PRODUCTION.
  2. ALL WELDS MUST BE MADE BY A COMPANY CERTIFIED BY THE CANADIAN WELDING BUREAU IN COMPLIANCE TO THE STANDARD W59. THE WELDERS AND THE FIRM WILL ALSO BE IN COMPLIANCE WITH THE W47.1 STANDARD.
  3. ALL THE STEELS WILL BE IN COMPLIANCE WITH THE CAN/CSA-G40.21 STANDARD, GRADE 300W FOR SHEETS AND GRADE 350W FOR OPEN PROFILES AND TUBES.
  4. BOLTED CONNECTIONS WILL BE IN STAINLESS STEEL.
  5. ALL STRUCTURES EXPOSED TO WEATHER WILL BE HOT DIPPED GALVANIZED WITH A ZINC COAT OF 600 G/M<sup>2</sup> IN COMPLIANCE WITH CAN/CSA-G164 STANDARD.
  6. WHEN NOT MENTIONED, ALUMINUM USED IS 6061 T-6
  7. ALL THE EQUIPMENTS PRESENTED ON THE PLAN COMPLY WITH CSA Z 259.16 DESIGN OF ACTIVE FALL PROTECTION SYSTEMS AND CSA Z259.13 FLEXIBLE HORIZONTAL LIFELINE SYSTEMS.

2016-02-05	ISSUED FOR TENDER	MW
2016-01-29	FOR DISCUSSION	JTC
A M J	MODIFICATION	PAR
---	ISSUED DATE	-

CLIENT:  
**CANADIAN SPACE AGENCY**

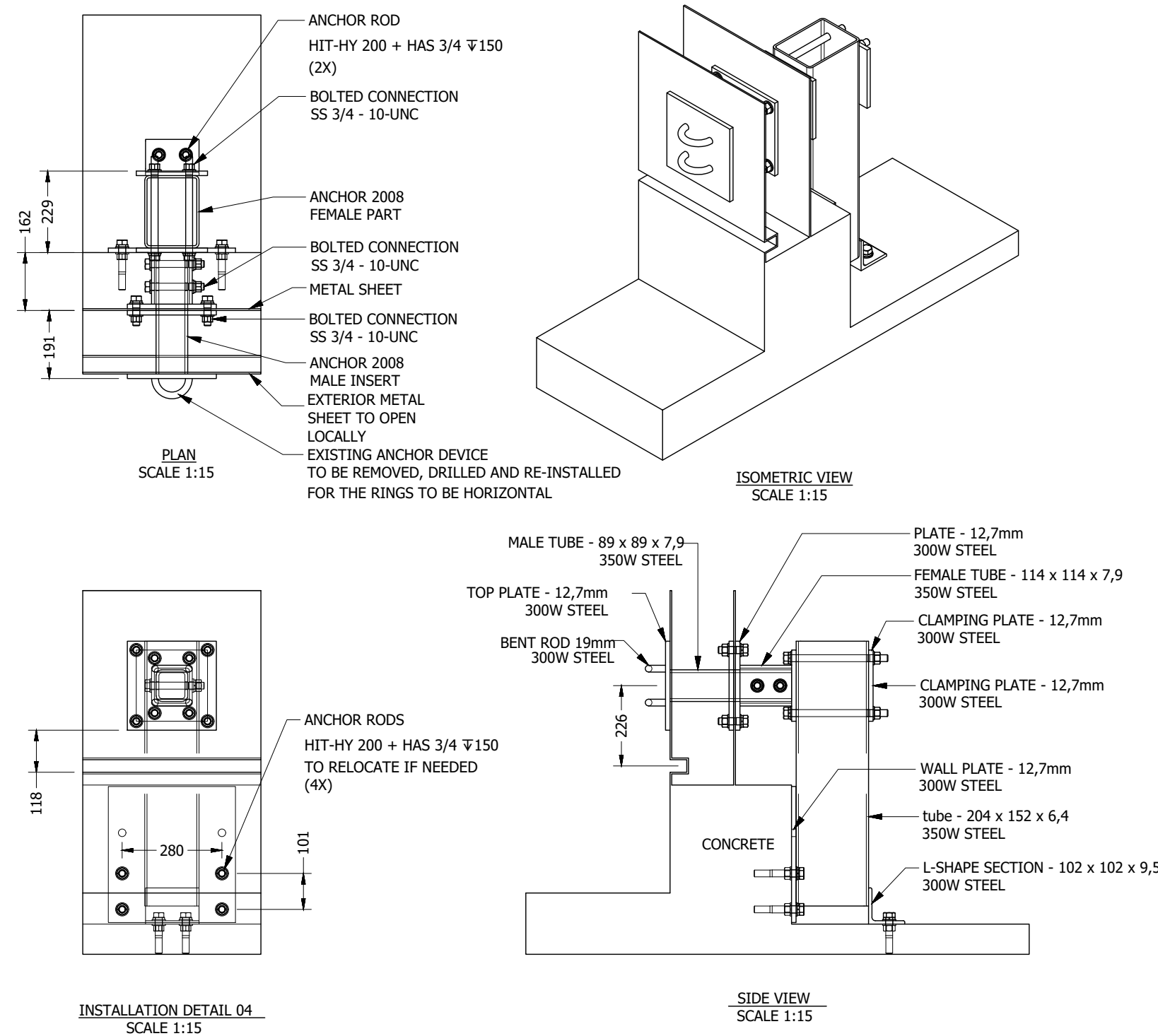
PROJECT:  
**SAFETY ANCHORS INSTALLATION**

TITLE:  
**LOCALISATION OF THE 2016 INTERVENTIONS**

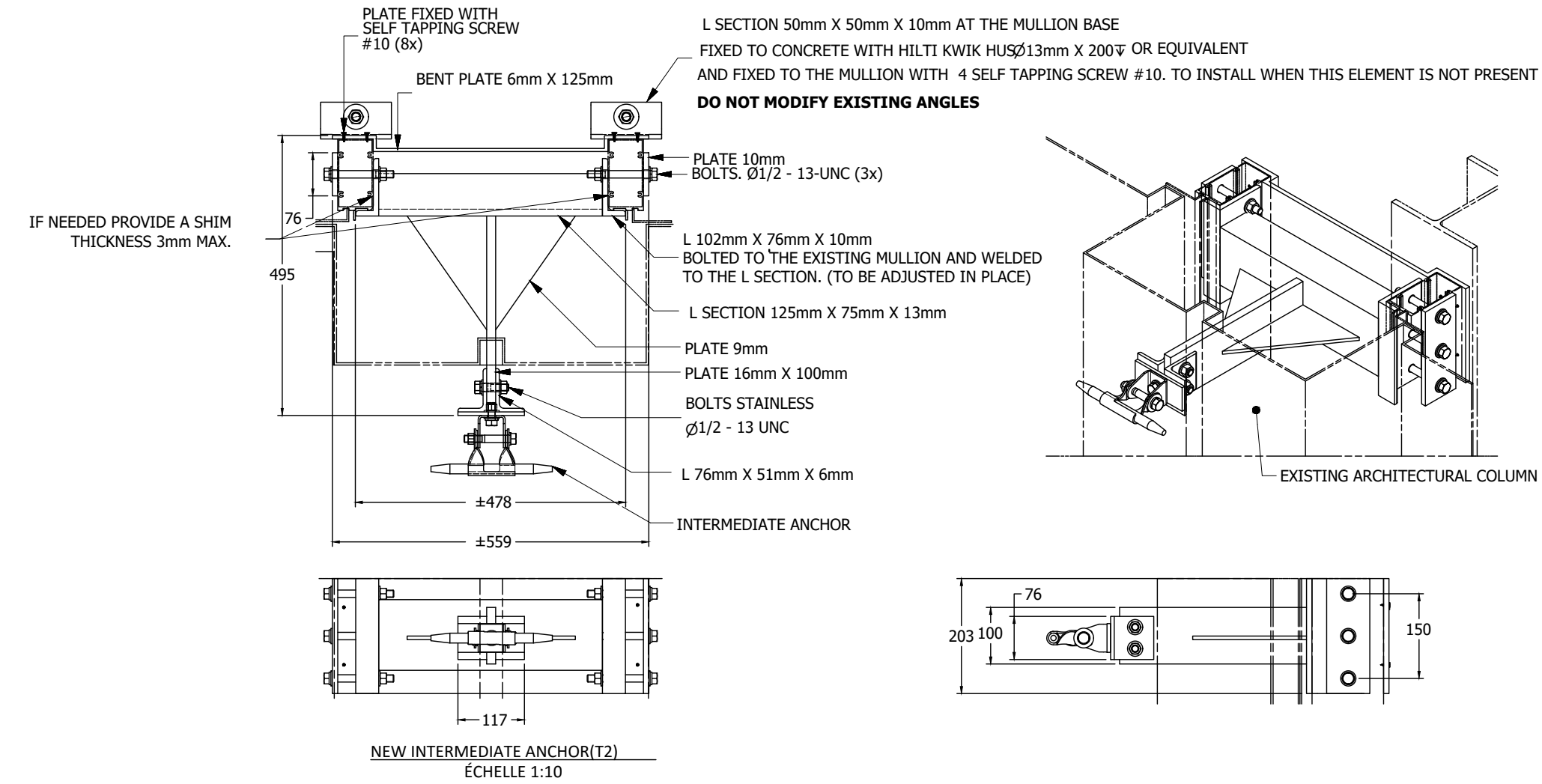


REF. CLIENT:	-	DATE:	2016-02-05
PROJECT:	# 2015 - 178	DRAWING:	S-E - VÉRIF: -
SCALE:	1:200	PAGE:	2 OF 4D
SIZE:	ARCH D (24" X 36")		

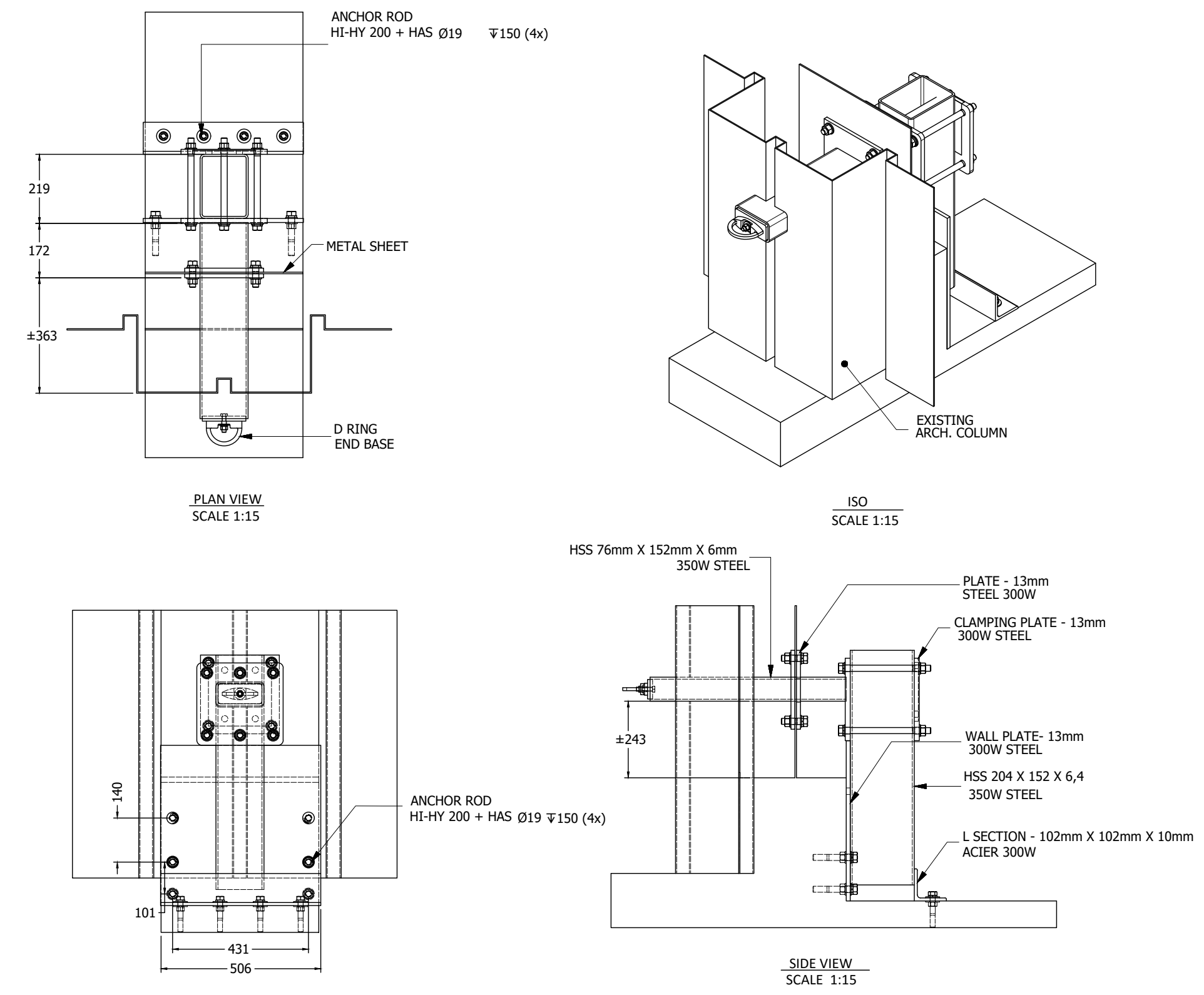
**Installation type 1 (T1) EXISTING \*\*END ANCHORS TO BE MODIFIED\*\***



**Installation type 2 (T2)**

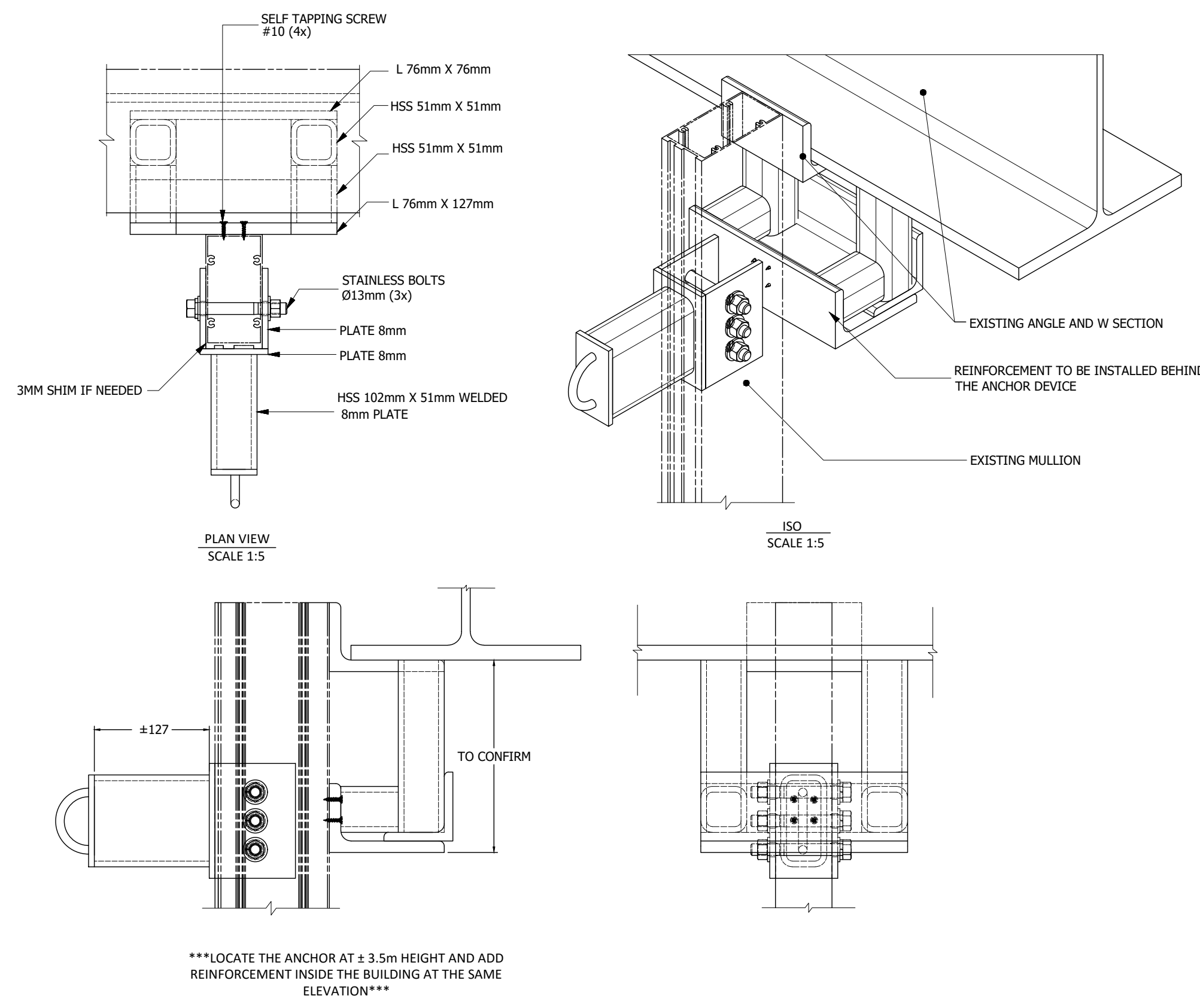


**Installation type 3 (T3)**

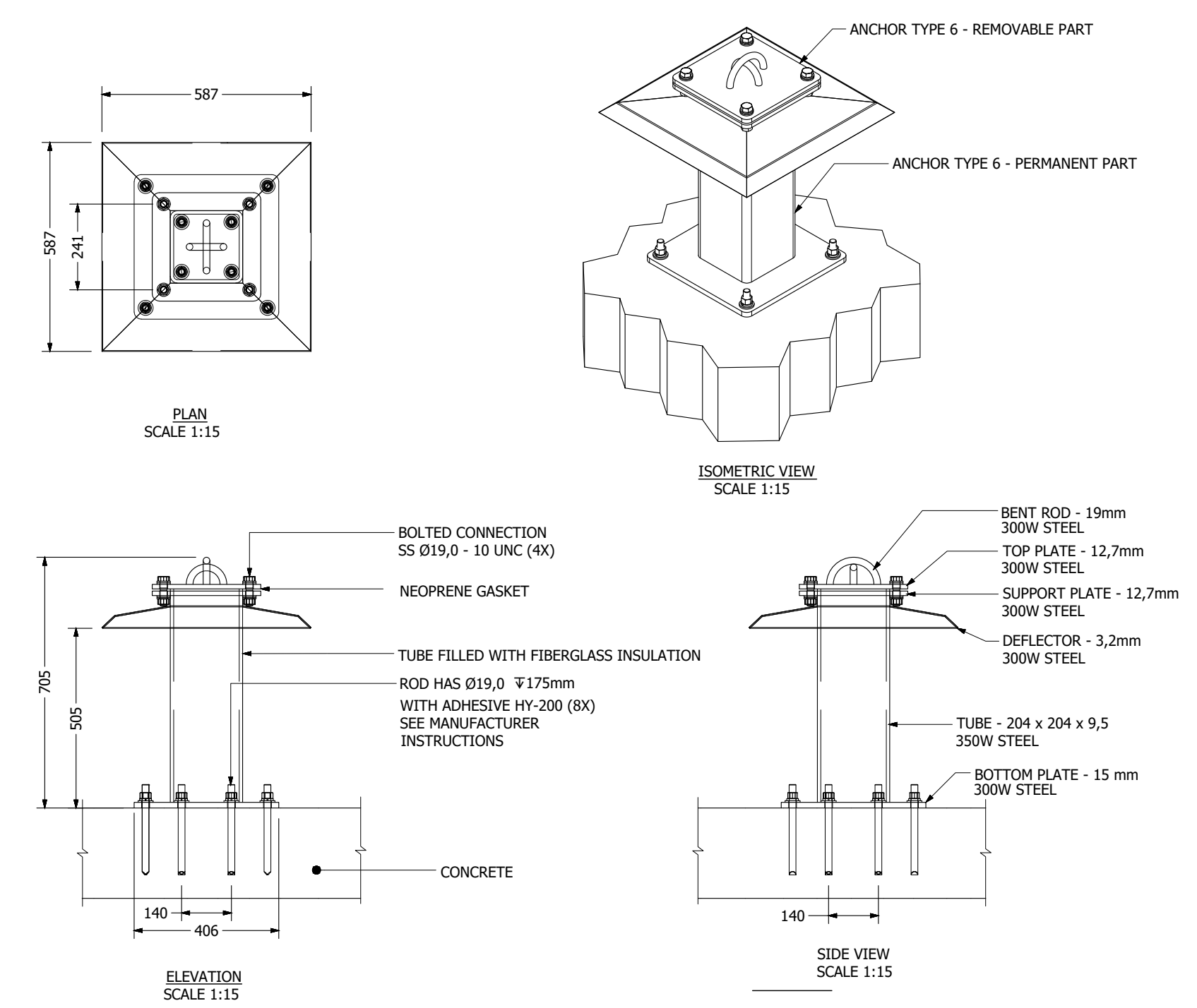


- NOTES GÉNÉRALES:
- ALL MEASUREMENTS MUST BE VALIDATED ON SITE BY THE CONTRACTOR BEFORE THE PRODUCTION.
  - ALL WELDS MUST BE MADE BY A COMPANY CERTIFIED BY THE CANADIAN WELDING BUREAU IN COMPLIANCE TO THE STANDARD W59. THE WELDERS AND THE FIRM WILL ALSO BE IN COMPLIANCE WITH THE W47.1 STANDARD.
  - ALL THE STEELS WILL BE IN COMPLIANCE WITH THE CAN/CSA-G40.21 STANDARD, GRADE 300W FOR SHEETS AND GRADE 350W FOR OPEN PROFILES AND TUBES.
  - BOLTED CONNECTIONS WILL BE IN STAINLESS STEEL.
  - ALL STRUCTURES EXPOSED TO WEATHER WILL BE HOT DIPPED GALVANIZED WITH A ZINC COAT OF 600 G/M<sup>2</sup> IN COMPLIANCE WITH CAN/CSA-G164 STANDARD.
  - WHEN NOT MENTIONED, ALUMINUM USED IS 6061 T-6
  - ALL THE EQUIPMENTS PRESENTED ON THE PLAN COMPLY WITH CSA 2.259.16 DESIGN OF ACTIVE FALL PROTECTION SYSTEMS AND CSA 2.259.13 FLEXIBLE HORIZONTAL LIFELINE SYSTEMS.

**Installation type 4 (T4)**



**Installation type 5 (T5)**



-	-	-
2016-02-05	ISSUED FOR TENDER	MW
2016-01-29	FOR DISCUSSION	JTC
A	MODIFICATION	PAR
---	ISSUED DATE	-

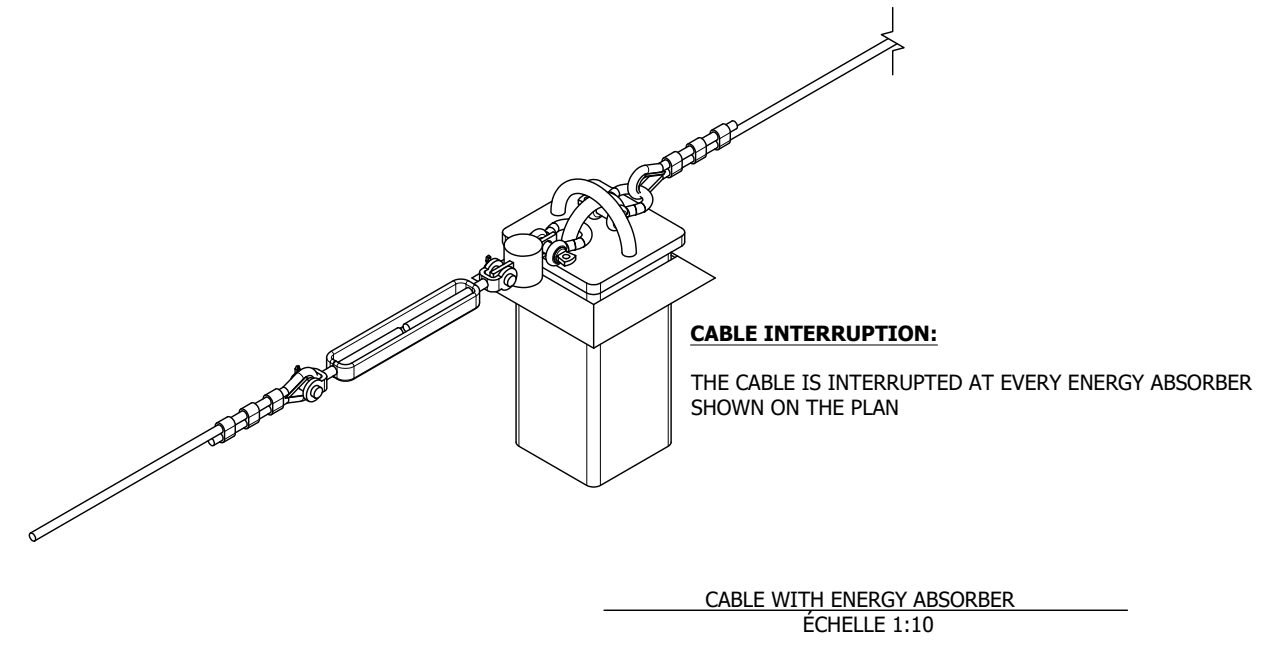
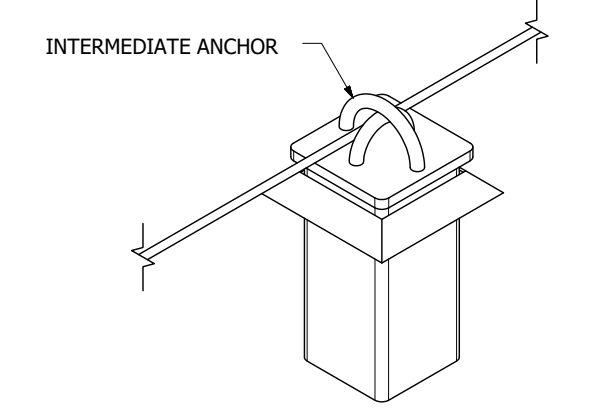
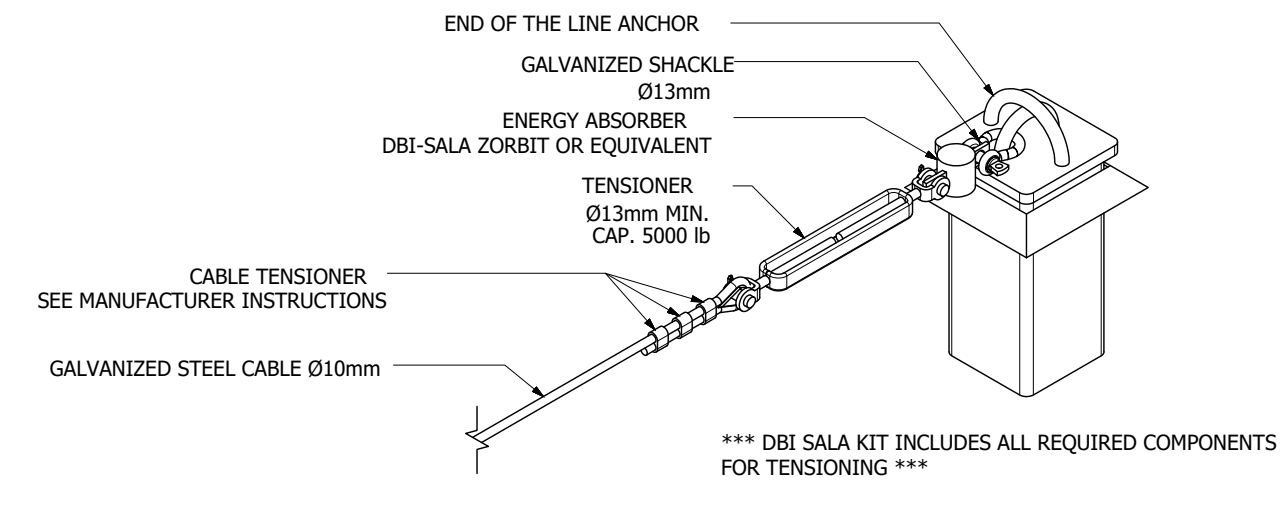
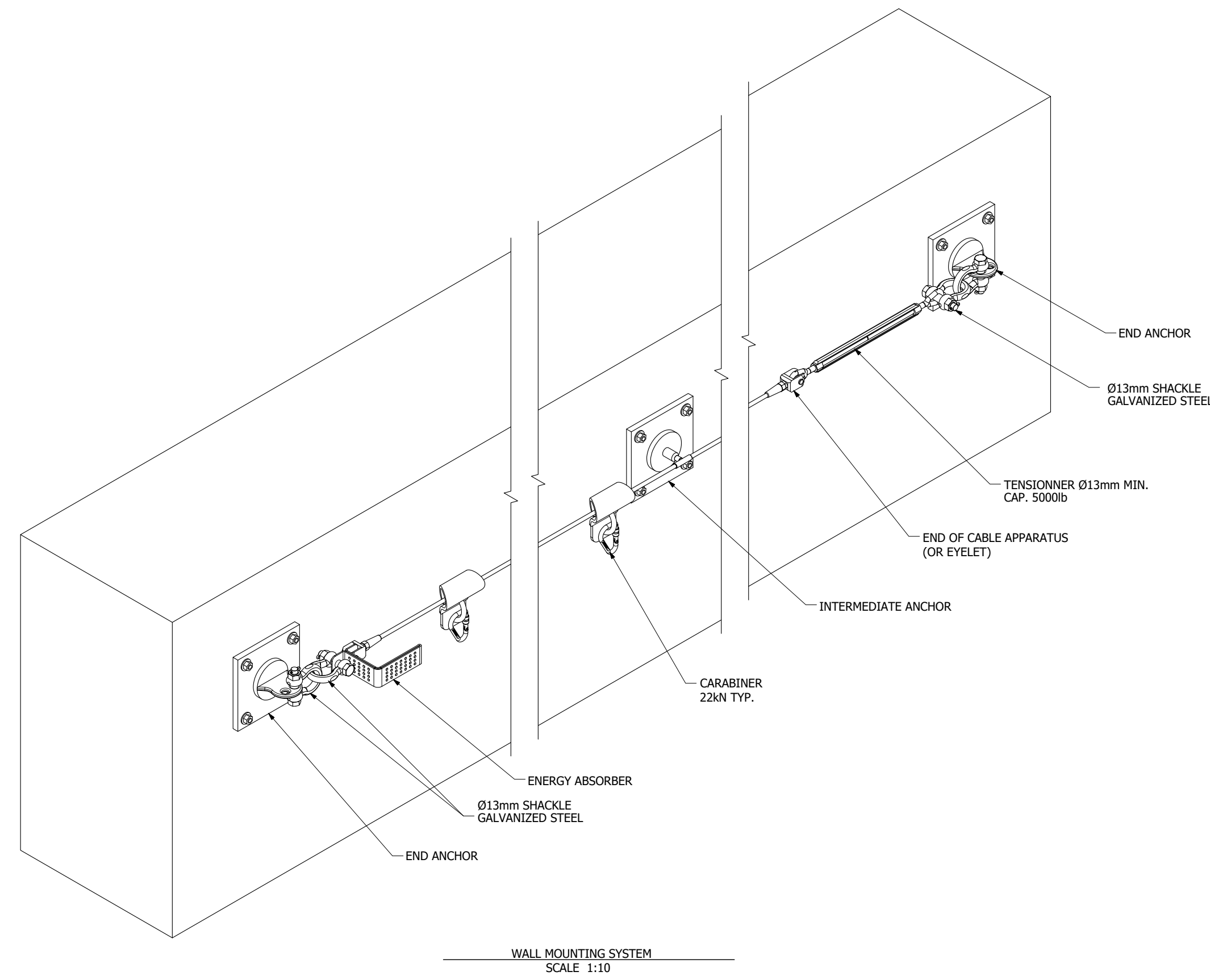
CLIENT:  
**CANADIAN SPACE AGENCY**

PROJECT:  
**SAFETY ANCHORS INSTALLATION**

TITLE:  
**INSTALLATION DETAILS**



# STANDARD INSTALLATION OF HORIZONTAL CABLE



- NOTES GÉNÉRALES:
1. ALL MEASUREMENTS MUST BE VALIDATED ON SITE BY THE CONTRACTOR BEFORE THE PRODUCTION.
  2. ALL WELDS MUST BE MADE BY A COMPANY CERTIFIED BY THE CANADIAN WELDING BUREAU IN COMPLIANCE TO THE STANDARD W59. THE WELDERS AND THE FIRM WILL ALSO BE IN COMPLIANCE WITH THE W47.1 STANDARD.
  3. ALL THE STEELS WILL BE IN COMPLIANCE WITH THE CAN/CSA-G40.21 STANDARD, GRADE 300W FOR SHEETS AND GRADE 350W FOR OPEN PROFILES AND TUBES.
  4. BOLTED CONNECTIONS WILL BE IN STAINLESS STEEL.
  5. ALL STRUCTURES EXPOSED TO WEATHER WILL BE HOT DIPPED GALVANIZED WITH A ZINC COAT OF 600 G/M<sup>2</sup> IN COMPLIANCE WITH CAN/CSA-G164 STANDARD.
  6. WHEN NOT MENTIONED, ALUMINUM USED IS 6061 T-6
  7. ALL THE EQUIPMENTS PRESENTED ON THE PLAN COMPLY WITH CSA 2.259.16 DESIGN OF ACTIVE FALL PROTECTION SYSTEMS AND CSA 2.259.13 FLEXIBLE HORIZONTAL LIFELINE SYSTEMS.

-	-	-
2016-02-05	ISSUED FOR TENDER	MW
2016-01-29	FOR DISCUSSION	JTC
A	MODIFICATION	PAR
---	ISSUED DATE	-

CLIENT:  
**CANADIAN SPACE AGENCY**

PROJECT:  
**SAFETY ANCHORS INSTALLATION  
2016 PHASE**

TITLE:  
**INSTALLATION DETAILS**

REF. CLIENT:	-	DATE:	2016-02-05
PROJECT:	# 2015 - 178	DRAWING: M-L	VÉRIF.: -
SCALE:	1:200	PAGE:	4 OF 4
SIZE:	ARCH D (24" X 36")		