



RETURN BIDS TO:
RETOURNER LES SOUMISSIONS À:
Bid Receiving Public Works and Government
Services Canada/Réception des soumissions
Travaux publics et Services gouvernementaux
Canada
1230 Government Street, Room 401
1230, rue Government, pièce 401
Victoria
British Columbia
V8W 3X4
Bid Fax: (250) 363-3344

SOLICITATION AMENDMENT

MODIFICATION DE L'INVITATION

The referenced document is hereby revised; unless otherwise indicated, all other terms and conditions of the Solicitation remain the same.

Ce document est par la présente révisé; sauf indication contraire, les modalités de l'invitation demeurent les mêmes.

Comments - Commentaires

Vendor/Firm Name and Address
Raison sociale et adresse du
fournisseur/de l'entrepreneur

Issuing Office - Bureau de distribution
Public Works and Government Services Canada -
Pacific Region
800 Burrard Street, Room 219
800, rue Burrard, pièce 219
Vancouver
British C
V6Z 0B9

Title - Sujet Marktos Harbour Elec. Upgrade	
Solicitation No. - N° de l'invitation F1571-165012/A	Amendment No. - N° modif. 002
Client Reference No. - N° de référence du client F1571-165012	Date 2016-07-04
GETS Reference No. - N° de référence de SEAG PW-\$PWY-032-7807	
File No. - N° de dossier PWY-6-39043 (032)	CCC No./N° CCC - FMS No./N° VME
Solicitation Closes - L'invitation prend fin at - à 02:00 PM on - le 2016-07-12	
Time Zone Fuseau horaire Pacific Daylight Saving Time PDT	
F.O.B. - F.A.B. Plant-Usine: <input type="checkbox"/> Destination: <input checked="" type="checkbox"/> Other-Autre: <input type="checkbox"/>	
Address Enquiries to: - Adresser toutes questions à: Large, Kathy(pwy)	Buyer Id - Id de l'acheteur pwy032
Telephone No. - N° de téléphone (250) 216-4455 ()	FAX No. - N° de FAX (250) 363-0395
Destination - of Goods, Services, and Construction: Destination - des biens, services et construction: DFO - Marktos Small Craft Harbour - Flores Island, BC	

Instructions: See Herein

Instructions: Voir aux présentes

Delivery Required - Livraison exigée	Delivery Offered - Livraison proposée
Vendor/Firm Name and Address Raison sociale et adresse du fournisseur/de l'entrepreneur	
Telephone No. - N° de téléphone Facsimile No. - N° de télécopieur	
Name and title of person authorized to sign on behalf of Vendor/Firm (type or print) Nom et titre de la personne autorisée à signer au nom du fournisseur/ de l'entrepreneur (taper ou écrire en caractères d'imprimerie)	
Signature	Date

Solicitation No. - N° de l'invitation
F1571-165012/A
Client Ref. No. - N° de réf. du client

Amd. No. - N° de la modif.
002
File No. - N° du dossier

Buyer ID - Id de l'acheteur
PWY032
CCC No./N° CCC - FMS No/ N° VME

Les documents français seront disponibles sur demande.

Vous trouverez l'addenda n° 1 ci-joint.
Les autres conditions ne changent pas.

**Marktosis Electrical Construction
Addendum #1**

Page 1 of 1

Response to Bidders' Inquiries:

Please find below a response to bidder's inquiries received to date.

- 1. Q: Please confirm the New Transformer and Receptacles cabinets are supplied by contractor? If so we should have detailed drawings and specifications for both transformer and receptacle cabinets.**

A: New Transformer and Receptacle cabinets are to be supplied by the Contractor. Please note the following supplemental items to Tender F1571-165012:

- a) **00 01 10 "TABLE OF CONTENTS"** to include the following additional Specification:

26 27 16 "ELECTRICAL CABINETS AND ENCLOSURES"

- b) Specification **26 27 16 "ELECTRICAL CABINETS AND ENCLOSURES"** is to form part of tender documents.

- c) The following drawings are to form part of tender documents.

- i. ***AK15-001***
- ii. ***AK15-002***
- iii. ***AK15-003***
- iv. ***AK15-004***
- v. ***AK15-005***
- vi. ***ATC15-001***
- vii. ***ATC15-002***
- viii. ***ATC15-003***
- ix. ***ATC15-004***
- x. ***ATC15-005***
- xi. ***ATC15-006***

Part 1 General

1.1 RELATED REQUIREMENTS

- .1 Note used

1.2 REFERENCES

- .1 CSA International
 - .1 CAN/CSA C22.2 No.94.1-07, Enclosures for Electrical Equipment, Non Environment Considerations.
- .2 National Electrical Manufacturers Association (NEMA)
 - .1 NEMA 250-2014, Enclosures for Electrical Equipment (1000 Volts Maximum).

1.3 ACTION AND INFORMATIONAL SUBMITTALS

- .1 Submit in accordance with Section 01 33 00 - Submittal Procedures.
- .2 Product Data:
 - .1 Submit manufacturer's instructions, printed product literature and data sheets for electrical cabinets and enclosures and include product characteristics, performance criteria, physical size, finish and limitations.
 - .2 Submit Product Data sheets for all electrical components including panel boards, transformers, breakers, and receptacles
- .3 Shop Drawings:
 - .1 Submit drawings for all enclosures
 - .1 Indicate on drawings:
 - .1 Front view and plan view of each typical assembly
 - .2 Schematic diagram
 - .3 Conduit space locations within the assembly
 - .4 Full component listing for each receptacle pedestal
 - .5 Cable terminal sizes

1.4 CLOSEOUT SUBMITTALS

- .1 Submit in accordance with Section 01 78 00 - Closeout Submittals.
- .2 Operation and Maintenance Data: submit operation and maintenance data for electrical cabinets and enclosures for incorporation into manual.

1.5 DELIVERY, STORAGE AND HANDLING

- .1 Deliver, store and handle materials in accordance with manufacturer's written instructions.

- .2 Delivery and Acceptance Requirements: deliver materials to site in original factory packaging, labelled with manufacturer's name and address.
- .3 Storage and Handling Requirements:
 - .1 Store materials in dry location and in accordance with manufacturer's recommendations in clean, dry, well-ventilated area.
 - .2 Store and protect electrical cabinets and enclosures from nicks, scratches, and blemishes.
 - .3 Replace defective or damaged materials with new.

Part 2 Products

2.1 CABINET DESIGN

- .1 Provide cabinets in quantity and with components as shown on drawings.
- .2 Design of Receptacle Cabinets (RC) to meet requirements shown on Aluminium Kiosk drawings AK15-001, AK15-002, AK15-003, AK15-004, and AK15-005
- .3 Design of Transformer Cabinets (TC) to meet requirements shown on Aluminium Transformer Kiosk drawings ATC15-001, ATC15-002, ATC15-003, ATC15-004, ATC15-005, and ATC15-006.
- .4 Central Distribution Panel to include features and house all components shown on drawings and listed herein.

2.2 MATERIALS

- .1 Enclosures will not be constructed of metals in any combination such as to cause galvanic action which will adversely affect any part of the equipment exposed to moisture.
- .2 Equip enclosure with mounting rails adjustable horizontally and vertically to enable mounting of equipment at any location within housing.
 - .1 Rails: 14 mm holes and 50 x 14 mm slots on 100 mm centres for horizontal adjustment.
 - .2 Holes in side panel flanges in 60 mm increments for vertical adjustment.
- .3 Cover: tamperproof, bolt-on, domed to shed water.
- .4 Door: 3 point latching, with padlocking means.
- .5 Ventilation panel constructed to allow air circulation yet preventing entry of foreign objects, wild life, and vermin.
- .6 Enclosure capable of being shipped in knocked-down condition.

Part 3 Execution

3.1 EXAMINATION

- .1 Verification of Conditions: verify that conditions of substrate are acceptable for electrical cabinet and enclosure installation in accordance with manufacturer's written instructions.
 - .1 Visually inspect substrate in presence of Departmental Representative.
 - .2 Inform Departmental Representative of unacceptable conditions immediately upon discovery.
 - .3 Proceed with installation only after unacceptable conditions have been remedied and after receipt of written approval to proceed from Consultant.

3.2 INSTALLATION

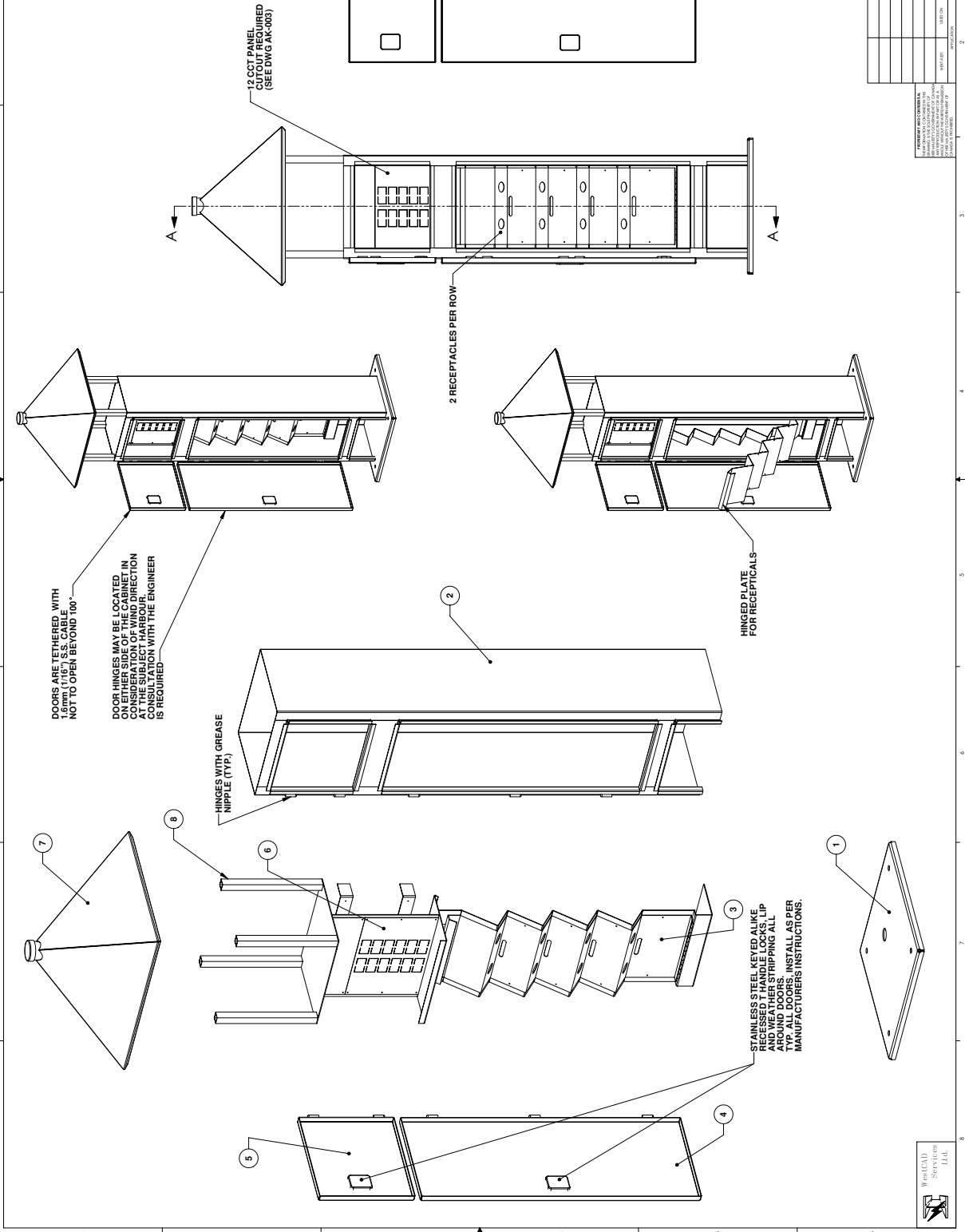
- .1 Assemble enclosure in accordance with manufacturer's instructions and securely mount on building structure with channels, supports and fastenings.
- .2 Mount equipment in enclosure.
- .3 Label electrical cabinets and enclosure to Section 26 05 00 - Common Work Results for Electrical.

3.3 CLEANING

- .1 Progress Cleaning: clean in accordance with Section 01 74 11 - Cleaning.
 - .1 Leave Work area clean at end of each day.
- .2 Final Cleaning: upon completion remove surplus materials, rubbish, tools and equipment in accordance with Section 01 74 11 - Cleaning.
- .3 Waste Management: separate waste materials for reuse and recycling in accordance with Section 01 74 21 - Construction/Demolition Waste Management and Disposal.
 - .1 Remove recycling containers and bins from site and dispose of materials at appropriate facility.

END OF SECTION

ITEM NO.	DWG No.	DESCRIPTION	Default QTY.
1	002	BASE PLATE	1
2	002	BOX SECTION ASSEMBLY	1
3	003	HINGE PLATE ASSEMBLY	1
4	003	HINGE PLATE ASSEMBLY	1
5	002	UPPER DOOR ASSEMBLY	1
6	002	UPPER DOOR ASSEMBLY	1
7	002	BREAKER PANEL ASSEMBLY	1
8	004	ROOF CAP ASSEMBLY	1
9	004	ROOF CAP ASSEMBLY	1
10	004	ROOF CAP ASSEMBLY	1



ALUMINUM KIOSK

AK15-001

REVISIONS

NO.	DATE	DESCRIPTION
1	01/15/2015	ISSUED FOR CONSTRUCTION

PROJECT INFORMATION

CLIENT	PROJECT NAME	PROJECT NO.
Fisheries & Oceans	Small Craft Harbour Branch	AK15-001

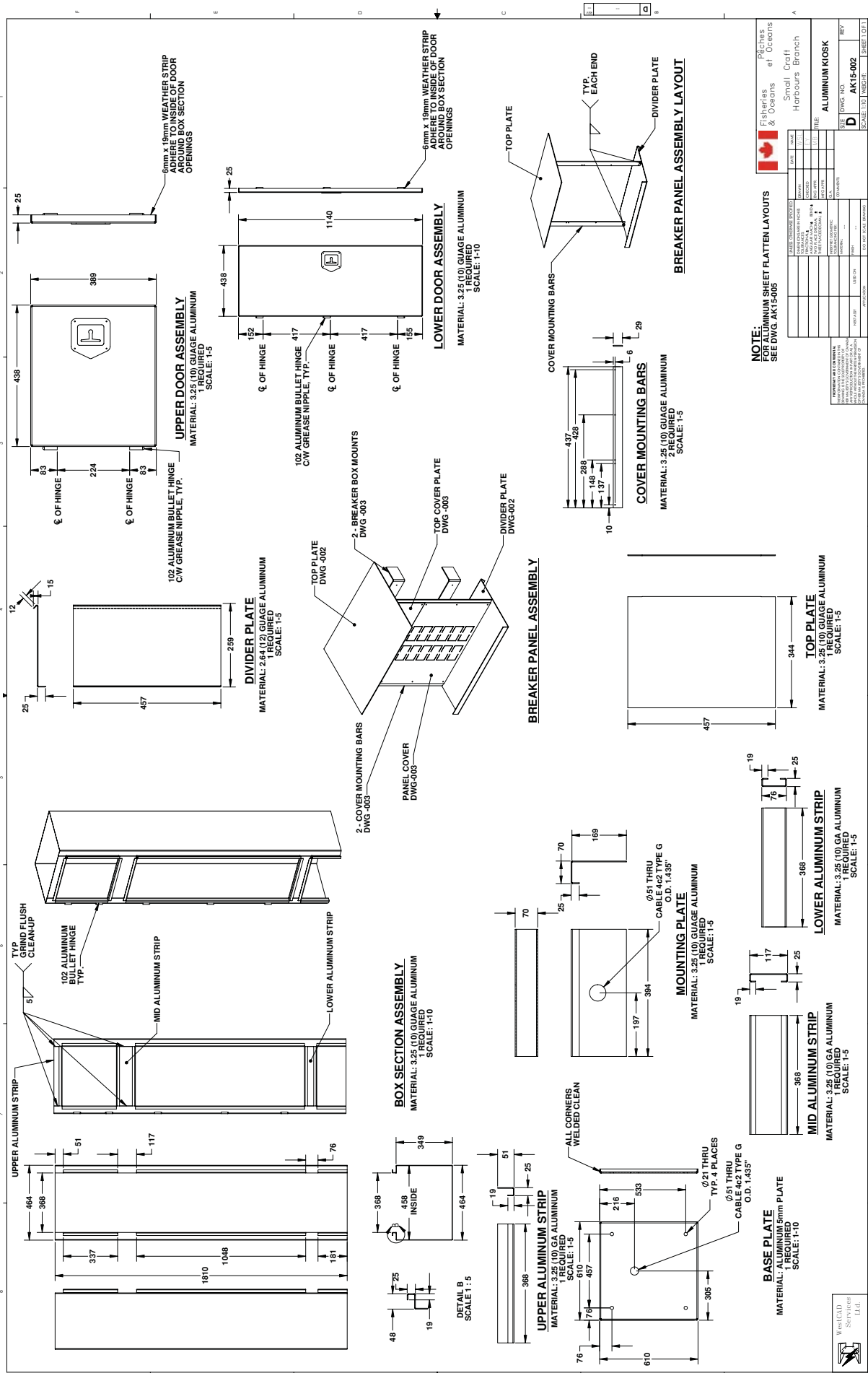
DESIGNER **AK15-001**

DATE 01/15/2015


SCALE 1:8

SHEET 1 OF 1





NOTE:
FOR ALUMINUM SHEET FLATTEN LAYOUTS
SEE DWG. AK15-005

	Fisheries & Oceans	Pêches et Océans
---	-----------------------	---------------------

[illegible]

