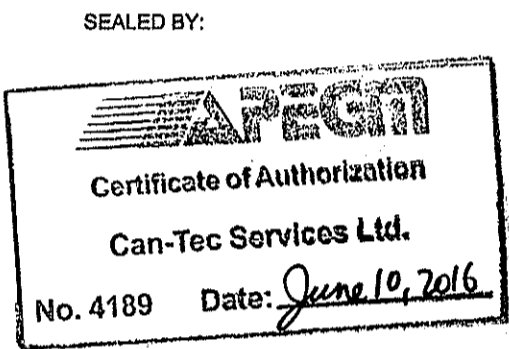


LEGEND	
	SANITARY PIPE
	EXISTING SANITARY PIPE
	COLD WATER
	HOT WATER
	VENT PIPE

- DRAWING NOTES #
- APPROXIMATE LOCATION OF SEWER LINE FINAL LOCATION TO BE SITE DETERMINED
 - NEW SANITARY LINE TO BE INSTALLED UNDER EXISTING FLOOR SLAB.
 - CONNECT TO EXISTING PLUMBING
 - EXISTING HOT WATER TANK RELOCATED AND RE-PIPED TO EXISTING DCW AND DHW.
 - LOCATION OF EXISTING HWT TANK
 - NEW HOT WATER TANK FOR MAIN FLOOR
 - NOT USED
 - NOT USED
 - NOT USED
 - CONNECT NEW 3/4" DCW LINE TO EXISTING DCW SERVICE NEAR FLOOR C/W SHUT OFF VALVE
 - EXISTING DCW LINE FOR SECOND FLOOR SUITE TO BE RELOCATED INTO CHASE AND RE-CONNECTED TO SYSTEM. ADD ACCESS DOOR AS REQUIRED FOR SERVICING
 - ADD NEW 2" CENTER DRAIN WASHING MACHINE OUTLET BOX C/W 2" STANDING WASTE, VENT AND DEEP SEAL TRAP. CONNECT TO EXISTING SANITARY LINE LOCATED ON WALL
 - WASHER-1/2" H&CW DOMESTIC WATER SUPPLY. SUPPLY AND INSTALL ZURN SHOCK ABSORBER ON EACH HOT AND COLD WATER SUPPLYING EACH WASHER(TYPICAL).
 - RELOCATE EXISTING VENT LINE FROM SANITARY PUMP OUT TANK INSIDE NEW BULKHEAD
 - NEW 2" DRAIN FROM MAIN FLOOR SUITE LAUNDRY ROOM. RUN LINE BETWEEN FLOOR JOISTS UNTIL INSIDE BULKHEAD.
 - CONNECT TO EXISTING SEWAGE PUMP OUT TANK
 - RELOCATE SEWAGE PUMP CONTROL TO THIS LOCATION
 - EXISTING LOCATION OF SEWAGE PUMP CONTROL
 - RELOCATE SUMP PUMP LINES AS REQUIRED TO FIT WITHIN CLOSET
 - RELOCATE EXISTING HOSE BIB TO RUN BETWEEN JOISTS AND DROP DOWN INSIDE SUMP PIT ROOM
 - CONNECT TO EXISTING DCW AND DHW LINES
 - CHEATER VENT UNDER SINK VENT
 - SUPPLY LITTLE GIANT CONDENSATE AND PUMP CONNECT TO NEAREST DRAIN.



PROJECT TITLE
DUPLEX CONVERSION PROJECT

SHEET TITLE
MAIN FLOOR PLAN PLUMBING

DATE
12 04 02

SCALE
1/4" = 1'-0"

LOCATION
NORWAY HOUSE, MANITOBA, CANADA

CHECKED BY
RS

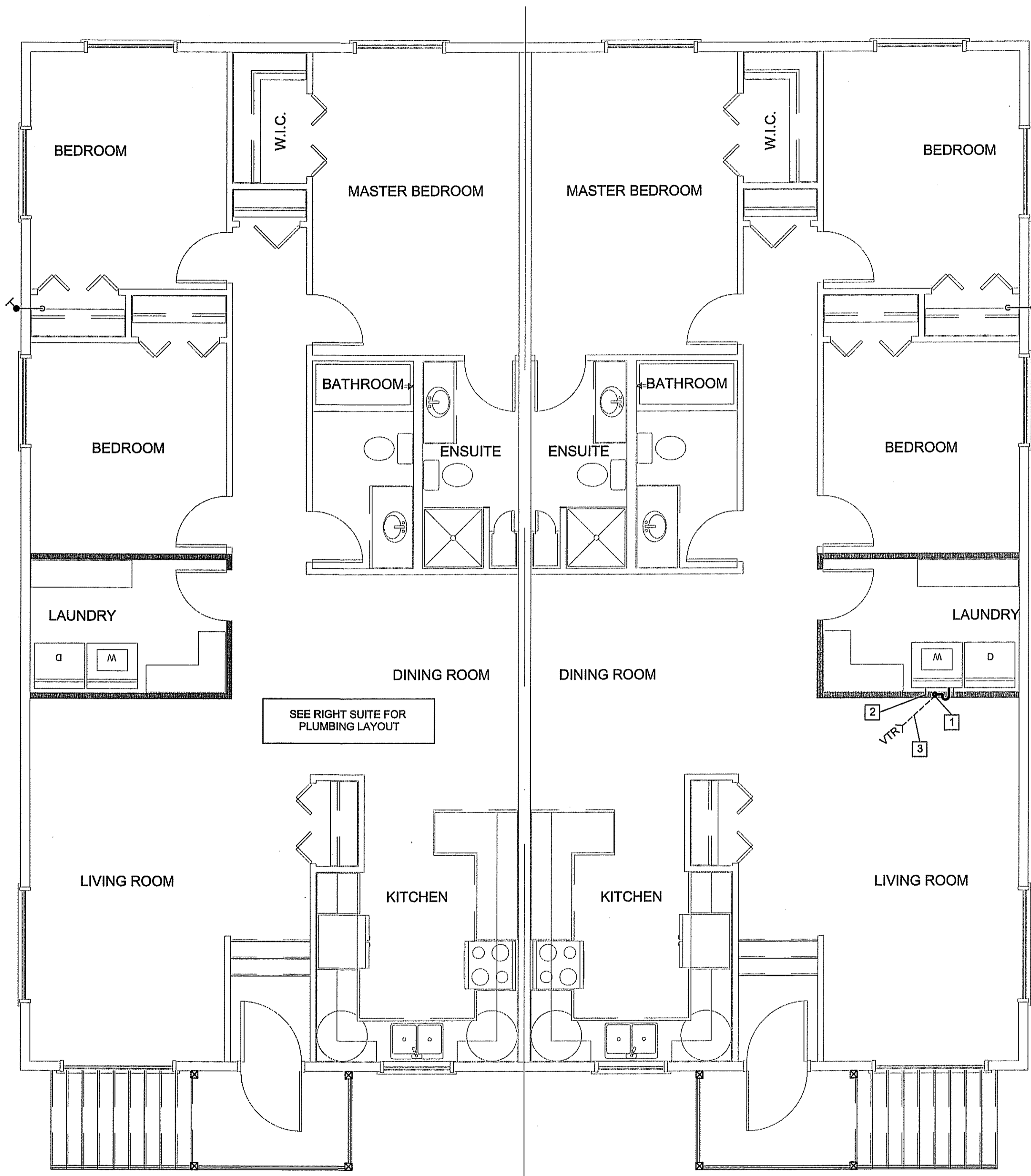
DRAWN BY
RS

M1.0

REVISION #: 00

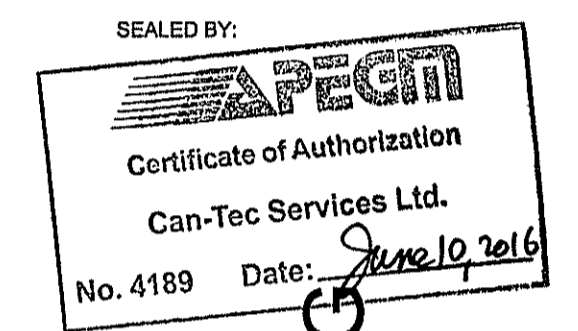
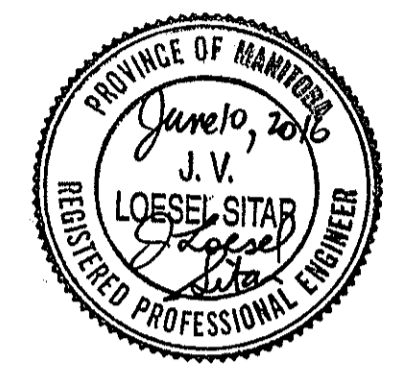
JOB NO. 16-016-01-30

00 ISSUED FOR TENDER 16 05 25 RS
REV.# REVISION DATE REV. BY



LEGEND	
	SANITARY PIPE
	EXISTING SANITARY PIPE
	COLD WATER
	HOT WATER
	VENT PIPE

- DRAWING NOTES [#]
1. ADD NEW 2" CENTER DRAIN WASHING MACHINE OUTLET BOX C/W 2" STANDING WASTE, VENT AND DEEP SEAL TRAP. CONNECT TO EXISTING SANITARY LINE LOCATED ON WALL
 2. WASHER-1/2" H&CW DOMESTIC WATER SUPPLY. SUPPLY AND INSTALL ZURN SHOCK ABSORBER ON EACH HOT AND COLD WATER SUPPLYING EACH WASHER(TYPICAL).
 3. VENT TO RUN TO ROOF TO BE INSULATED TO UNDERSIDE OF ROOF DECK. ADD NEW RUBBER FLASHING AND SEAL ROOF



PROJECT TITLE
DUPLEX CONVERSION PROJECT

SHEET TITLE
SECOND FLOOR PLAN - PLUMBING

DATE
 12.04.02

SCALE
 1/4" = 1'-0"

LOCATION
 NORWAY HOUSE, MANITOBA, CANADA

CHECKED BY
 RS

DRAWN BY
 RS

1 SECOND FLOOR PLAN - PLUMBING
 M1.1 SCALE: 1/4" = 1'-0"

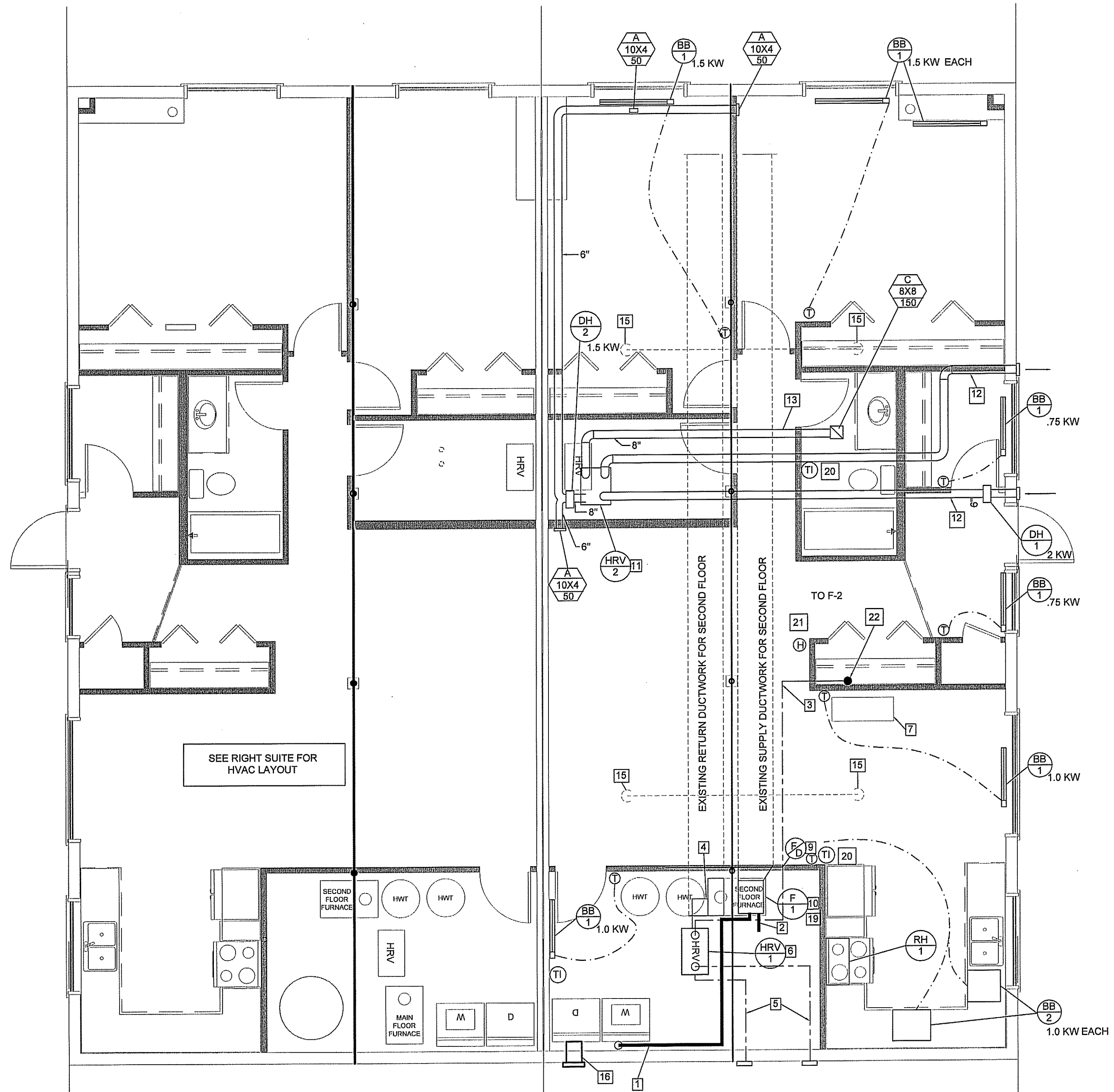
M1.1

REVISION #: 00

JOB NO.

16-016-01-30

00	ISSUED FOR TENDER	16.05.25	RS
REV. #	REVISION	DATE	REV. BY



SEE RIGHT SUITE FOR HVAC LAYOUT

MECHANICAL NOTES

- IT IS THE MECHANICAL CONTRACTORS RESPONSIBILITY TO SITE VERIFY ALL EXISTING CONDITIONS. NO EXTRAS WORK WILL BE CONSIDERED FOR ITEMS THAT ARE VISIBLE DURING PRELIMINARY SITE INSPECTION.

- DUCTWORK FOR FURNACE F-1 IS LOCATED IN A FIRE RATED BULKHEAD
- ALL DUCTWORK NEW AND EXISTING TO BE SEALED WITH DUCT SEALANT.
- ALL DUCTWORK NEW AND EXISTING TO BE

CLEANED BY PROFESSIONAL CLEANING COMPANY CERTIFICATE TO BE PROVIDED TO CONSULTANT UPON COMPLETION

- BASE BOARD HEATERS ARE SHOWN FOR INFORMATION ONLY. BASE BOARDS ARE TO BE SUPPLIED AND INSTALLED BY ELECTRICAL

HEATING AND COOLING LEGEND	
Ⓢ	THERMOSTAT
Ⓜ	HUMIDISTAT
Ⓣ	TIMER
Ⓣ	EQUIPMENT TAG (SEE SCHEDULE)
VENTILATION LEGEND	
⊠	SUPPLY AIR DUCT
⊞	RETURN AIR DUCT
⊟	EXHAUST AIR DUCT
⊠	OUTSIDE AIR OR COMBUSTION AIR DUCT
Ⓢ	FIRE DAMPER
Ⓢ	TURNING VANES
Ⓢ	DIFFUSER AND GRILLE TAG (SEE SCHEDULE)
Ⓢ	EQUIPMENT TAG (SEE SCHEDULE)

DRAWING NOTES #

- RELOCATE 5" DIA DUCT AND ADD FIRE DAMPER AT FLOOR TO KITCHEN ABOVE
- ADD FIRE DAMPER AT WALL TO DUCT TO ENTRY FOYER
- CONNECT NEW 5" DIA DUCT WORK TO EXISTING HRV EXHAUST DUCT WORK
- CONNECT HRV SUPPLY TO RETURN AIR PLENUM
- NEW EXHAUST AND FRESH AIR SUPPLY TO RUN UNDER STAIR LANDING AS HIGH AS POSSIBLE INSULATE WITH 2" FOIL FACE INSULATION.
- RELOCATED HRV FOR SECOND FLOOR. SUPPLY LITTLE GIANT CONDENSATE DRAIN TO NEAREST DRAIN.
- EXISTING LOCATION OF EXISTING HRV
- NOT USED
- ADD FIRE DAMPERS AT FACE OF BULKHEAD FOR DUCTWORK SUPPLYING SECOND FLOOR
- EXISTING ELECTRIC FURNACE SERVING SECOND FLOOR
- NEW HRV SERVING BASEMENT. SUPPLY LITTLE GIANT CONDENSATE PUMP AND PIPE TO NEAREST DRAIN
- NEW 6" EXHAUST AND FRESH AIR SUPPLY TO RUN BETWEEN JOISTS AND HAVE FIRE DAMPERS ENTERING AND LEAVING JOIST CAVITIES. DUCTS TO HAVE 2" FOIL FACE INSULATION ALONG ENTIRE LENGTH
- RUN EXHAUST DUCT BETWEEN JOISTS ADD FIRE DAMPER AT EACH PENETRATION
- NOT USED
- REMOVE EXISTING SUPPLY LEADER INTO BASEMENT BY SECOND FLOOR FURNACE (4) FOUR LOCATIONS
- NEW DRYER VENT 5" STEEL DUCT C/W 2" FOIL FACE INSULATION AND FLAPPER VENT CAULK TO SEAL ON EXTERIOR.
- INSULATE RETURN AIR DUCT WITH 1" ACOUSTIC INSULATION
- NOT USED
- ADD CANVAS ISOLATION COLLARS TO SUPPLY AND RETURN OF EXISTING FURNACE
- 20 MIN TIMER CONNECT TO HRV
- HUMIDISTAT CONNECT TO HRV
- UP THROUGH TO MAIN FLOOR



SEALED BY:
APEN
 Certificate of Authorization
 Can-Tec Services Ltd.
 No. 4189 Date: June 10, 2016

PROJECT TITLE
DUPLEX CONVERSION PROJECT

SHEET TITLE
MAIN FLOOR PLAN HVAC

DATE
 12 04 02

SCALE
 1/4" = 1'-0"

LOCATION
 NORWAY HOUSE, MANITOBA, CANADA

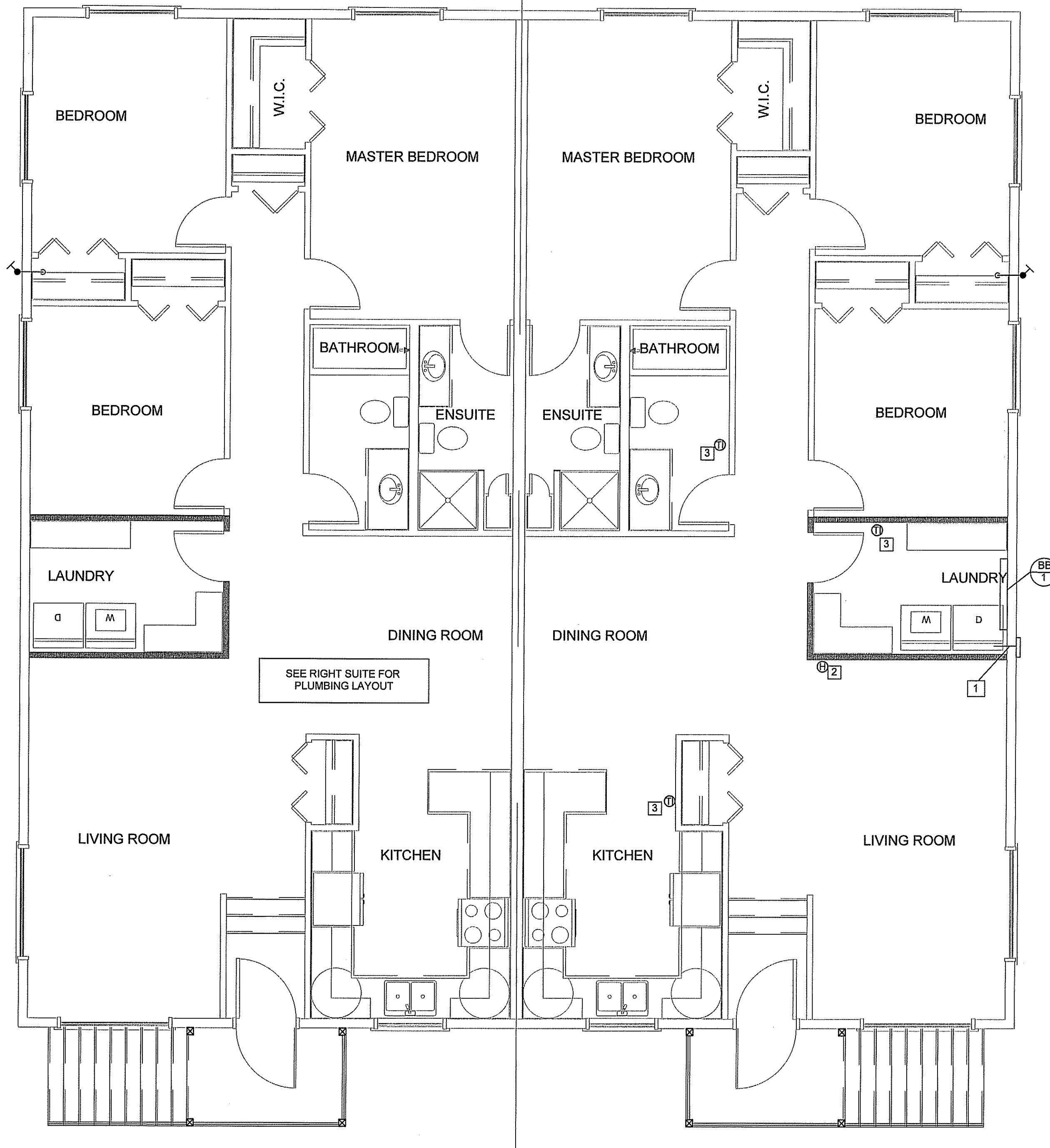
CHECKED BY
 RS

DRAWN BY
 RS

M2.0

REVISION #: 00
 JOB NO.

00 ISSUED FOR TENDER 16 05 25 RS
 REV.# REVISION DATE REV. BY
16-016-01-30

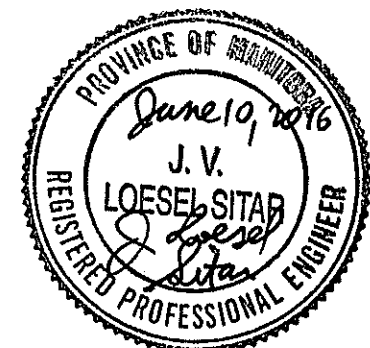


GRILLE/DIFFUSER SCHEDULE			
SYMBOL	MANUFACTURER	MODEL	REMARKS
A	EH PRICE	LOUVERED SUPPLY 520D/F/L/A/B12	
B	NOT USED		
C	EH PRICE	LOUVERED FACE RETURN 530F/L/B12	

DRAWING NOTES #

1. NEW DRYER VENT 5" STEEL DUCT C/W 2" FOIL FACE INSULATION AND FLAPPER VENT CAULK TO SEAL ON EXTERIOR.
2. HUMIDISTAT FOR HRV CONTROL. CONTRACTOR TO CONFIRM PRIOR TO ORDER THAT PROPOSED HUMIDISTAT WILL WORK WITH CURRENT HRV.
3. AUXILIARY 20 MINUTE TIMER FOR HRV CONTROL. CONTRACTOR TO CONFIRM PRIOR TO ORDER THAT PROPOSED TIMER WILL WORK WITH CURRENT HRV.

HEATING AND COOLING LEGEND	
Ⓢ	THERMOSTAT
Ⓜ	HUMIDISTAT
Ⓣ	TIMER
ⓉAG NO.	EQUIPMENT TAG (SEE SCHEDULE)
VENTILATION LEGEND	
▢	SUPPLY AIR DUCT
▢	RETURN AIR DUCT
▢	EXHAUST AIR DUCT
▢	OUTSIDE AIR OR COMBUSTION AIR DUCT
⊘	FIRE DAMPER
⊘	TURNING VANES
Ⓢ TAG NO.	DIFFUSER AND GRILLE TAG (SEE SCHEDULE)
ⓉAG NO.	EQUIPMENT TAG (SEE SCHEDULE)



Certificate of Authorization
 Can-Tec Services Ltd.
 No. 4189 Date: June 10, 2016

PROJECT TITLE
DUPLEX CONVERSION PROJECT
 SHEET TITLE
SECOND FLOOR PLAN - HVAC

DATE
 12 04 02
 SCALE
 1/4" = 1'-0"
 DRAWN BY
 RS
 CHECKED BY
 RS

LOCATION
 NORWAY HOUSE, MANITOBA, CANADA

1 SECOND FLOOR PLAN - HVAC
 M1.1 SCALE: 1/4" = 1'-0"

M2.1

REVISION # 00
 JOB NO.

00 ISSUED FOR TENDER 16 05 25 RS
 REV.# REVISION DATE REV. BY

16-016-01-30