



RETURN BIDS TO:

RETOURNER LES SOUMISSIONS À:

**Bid Receiving - PWGSC / Réception des soumissions
- TPSGC**
11 Laurier St. / 11, rue Laurier
Place du Portage, Phase III
Core 0B2 / Noyau 0B2
Gatineau, Québec K1A 0S5
Bid Fax: (819) 997-9776

**SOLICITATION AMENDMENT
MODIFICATION DE L'INVITATION**

The referenced document is hereby revised; unless otherwise indicated, all other terms and conditions of the Solicitation remain the same.

Ce document est par la présente révisé; sauf indication contraire, les modalités de l'invitation demeurent les mêmes.

Comments - Commentaires

Vendor/Firm Name and Address
Raison sociale et adresse du
fournisseur/de l'entrepreneur

Issuing Office - Bureau de distribution
Ship Refits and Conversions / Radoubss et
modifications de navires and / et
11 Laurier St. / 11, rue Laurier
6C2, Place du Portage
Gatineau, Québec K1A 0S5

Title - Sujet CCGS PIERRE RADISSON VESSEL LIFE EX	
Solicitation No. - N° de l'invitation F7049-160074/A	Amendment No. - N° modif. 011
Client Reference No. - N° de référence du client F7049-160074	Date 2016-07-13
GETS Reference No. - N° de référence de SEAG PW-\$\$MD-031-25863	
File No. - N° de dossier 031md.F7049-160074	CCC No./N° CCC - FMS No./N° VME
Solicitation Closes - L'invitation prend fin at - à 02:00 PM on - le 2016-07-25	Time Zone Fuseau horaire Eastern Daylight Saving Time EDT
F.O.B. - F.A.B. Plant-Usine: <input type="checkbox"/> Destination: <input checked="" type="checkbox"/> Other-Autre: <input type="checkbox"/>	
Address Enquiries to: - Adresser toutes questions à: Bilodeau, Allen	Buyer Id - Id de l'acheteur 031md
Telephone No. - N° de téléphone (819) 420-2912 ()	FAX No. - N° de FAX () -
Destination - of Goods, Services, and Construction: Destination - des biens, services et construction:	

Instructions: See Herein

Instructions: Voir aux présentes

Delivery Required - Livraison exigée	Delivery Offered - Livraison proposée
Vendor/Firm Name and Address Raison sociale et adresse du fournisseur/de l'entrepreneur	
Telephone No. - N° de téléphone Facsimile No. - N° de télécopieur	
Name and title of person authorized to sign on behalf of Vendor/Firm (type or print) Nom et titre de la personne autorisée à signer au nom du fournisseur/ de l'entrepreneur (taper ou écrire en caractères d'imprimerie)	
Signature	Date

La modification n° 11 vise à publier les items suivants.

1. Les Questions et réponses 15 à 19 ici-bas.

2. Modification à l'Annexe A, Section 32.2.2, Références

- Trois documents mentionnés à la réponse 18 sont ajoutés à la sous-section 32.2.2. Les documents sont intitulés Un document intitulé « Actuator Scupper Valve Danfoss », « Young & Cunningham Valve 5223 » et « Young & Cunningham Valve 5224 ».


CCGS Pierre Radisson VLE 2016 - # F7049 – 150372/A

#	Question	#	Answer
Q1	The auto cad drawing in sections 14 and 18 do not have the reference drawing attached and we are unable to open them. If you are not able to attach the reference drawing can you please supply in PDF format.	A1	Drawing 221-H-101.pdf is added to section 14 of the Technical Data Package, it includes all four AutoCAD layers in separate files; Drawing 06418-sf.pdf is added to section 18 of the Technical Data Package, it includes page 1 and 2 stated under Annex A, Section 18.2.1 representing respectively Port and Starboard views.
Q2	In order to gain time with bid preparation, will PWGSC accept a bid sent by fax?	A2	Bidders must submit their bid in accordance with the requirements of the Invitation to Tender. A bidder may qualify for a delayed bid by sending their bid through one of Canada Post priority services at the latest the day before the bid closing date. Further instructions to qualify can be found under the Standard Instructions 2003 (2016-04-04), Paragraph 07 - Delayed Bids. Additional instructions will be provided if Canada Post services are disturbed by a labour dispute.
Q3	Will a vessel dry docked at Port Weller in Ontario be acceptable?	A3	The vessel is scheduled for a Phase II work period to take place in Montreal during winter months. Dry docking at Port Weller facilities will be acceptable if the bidder demonstrates in his preliminary schedule that the vessel will need to be out of the Great Lakes and St-Lawrence Seaway System before it closes.
Q4	Will CCG provide a crew in December or can a crew be provided by the bidder in order to sail the vessel out of the Great Lakes before the St-Lawrence Seaway Closes?	A4	CCG will not accept a crew provided by the bidder to sail the vessel. CCG cannot commit to make a crew available in december within the bidding process. That would be creating a condition for Canada to accept with the bid.
Q5	Can the vessel be towed out of the Great Lakes before the St-Lawrence Seaway Closes?	A5	Yes. However the bidder must include in his bid the cost to tow the vessel from Port Weller to Montreal and meet other conditions added to the ITT. The ITT will be amended to reflect these changes.


Q6	Article 7.13.1, is the Environmental Impairment Liability Insurance of \$5,000,000 is included or added to the other required insurances?	A6	The Environmental Impairment Liability Insurance at Article 7.13.1 or under Annex D is independant of other required Insurances.
Q7	Is it possible to be provided with further details regarding asbestos onboard the vessel?	A7	Two reports named "Rapport de relevé d'amiante - GCC - Pierre Radisson 2013 (002)" and "141-19427-02 Rapp Pierre Radisson Hazmat 20150206b (0002)" will be added to the Technical Data Package.
Q8	Can CCG provide a delivery schedule for the Government Supplied Equipment?	A8	All equipment supplied by CCG will be loaded onbaord the vessel and therefore it will be transiting to the shipyard with the vessel.
Q9	Can the bid closing date be extended?	A9	Bid closing date has been extended to July 20th, 2016.
Q10	As per section 33.3.2.16 of the Radisson spec., can you please provide us with specific details on the motors to be overhauled such as nameplate data?	A10	Refer to pages 22 and 33 of the "Manuel hangar helicoptere" document found under section 33 of the Technical Data Package for the requested information.
Q11	Section 14.3.1 Question asked at the bidders conference. If coast guard could identify the ten suction extension pipes that must be removed to clean the sea bays and what size pipe to base the additional extension pipe on?	A11	Areas of the sea bays that are not accessible must be cleaned by rinsing with clear water only. Therefore, it will not be necessary to remove pipe extensions for sea water suction. In areas that are accessible, the cleanup will be done manually.
Q12	Section 14.3.2 Question asked at the bidders conference. Please identify the anodes that must be disconnect and removed and reinstalled ,we cannot bid on the word some and no drawing has been provided of the anodes.	A12	Areas of the sea bays that are not accessible must be cleaned by rinsing with clear water only. Therefore, it will not be necessary to remove anodes. In areas that are accessible, the cleanup will be done manually.

Q13	Section 46 .2.3.2 Question asked at the bidders conference. If Coast Guard has an existing approval for the deck head material. The spec asks the contractor to supply certificates for the material and the manufacturer of the system required does not have any marine certification at all neither TCMS or any classification certificate.	A13	The product "Fibrex Marine Board and flex 8" is no longer made, therefore the product stated in section 46.2.3.2 is not available. Consequently, the contractor may choose the following product or a replacement product meeting TCMS standards for the same application. SeaRox SL618NA made by Roxul and sold by Acoustico, contact: Andrée Boisvert, 418 653-9026 ; ABoisvert@acoustico.ca. A Searox datasheet is attached for reference.
Q14	In amendment 7 section 43.2.4, Coast Guard has changed the hatches from Government Supplied Material to contractor supplied material . As these hatches where part of a previous solicitation F7049-160007, why is CCG not supplying these hatches?	A14	None of the bids received under F7049-160007 tender were found to be compliant. The current schedule do not provided sufficient time to re-issue a new tender and acquire new hatches before the vessel planned work period.
Q15	We are requesting a one week extension to the closing date due to the change of the windows in spec 42 from government supplied material to contractor supplied material	A15	The solicitation closing date has been extended to July 25th.
Q16	A supplier cannot supply a TCMS certificate for these windows, however they are approved by class. Will coast guard accept the class certificate?	A16	Refer to Amendment 10, item 3, amended sub-section 42.2.4.1: " ... approved by Transport Canada or a classification society recognized by Transport Canada."
Q17	Due to the number of amendments & changes to the tender/bid package that are coming out for the Pierre Radisson, we feel that in order to submit a competitive and compliant bid, we require a 2 week extension to the current submission deadline	A17	The solicitation closing date has been extended to July 25th.
Q18	Section 31.2.2 of the spec., there should be a Young and Cunningham instruction Manual with the drawings which doesn't appear to be included. Can you please provide us with this document?	A18	Instruction booklet referred at Section 31.2.2 is the document entitled "Soupapes de dalot_Instruction.pdf" included under Section 32 of the TDP. Three additional documents on valve drawings and technical details are added to Section 31.2.2.

Q19	Please confirm that the bid for the Radisson can be faxed with the two cd's sent by courier or Canada Post if still working.	A19	Please refer to Answer #2 above.
------------	--	------------	----------------------------------

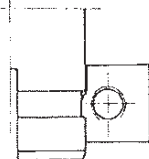
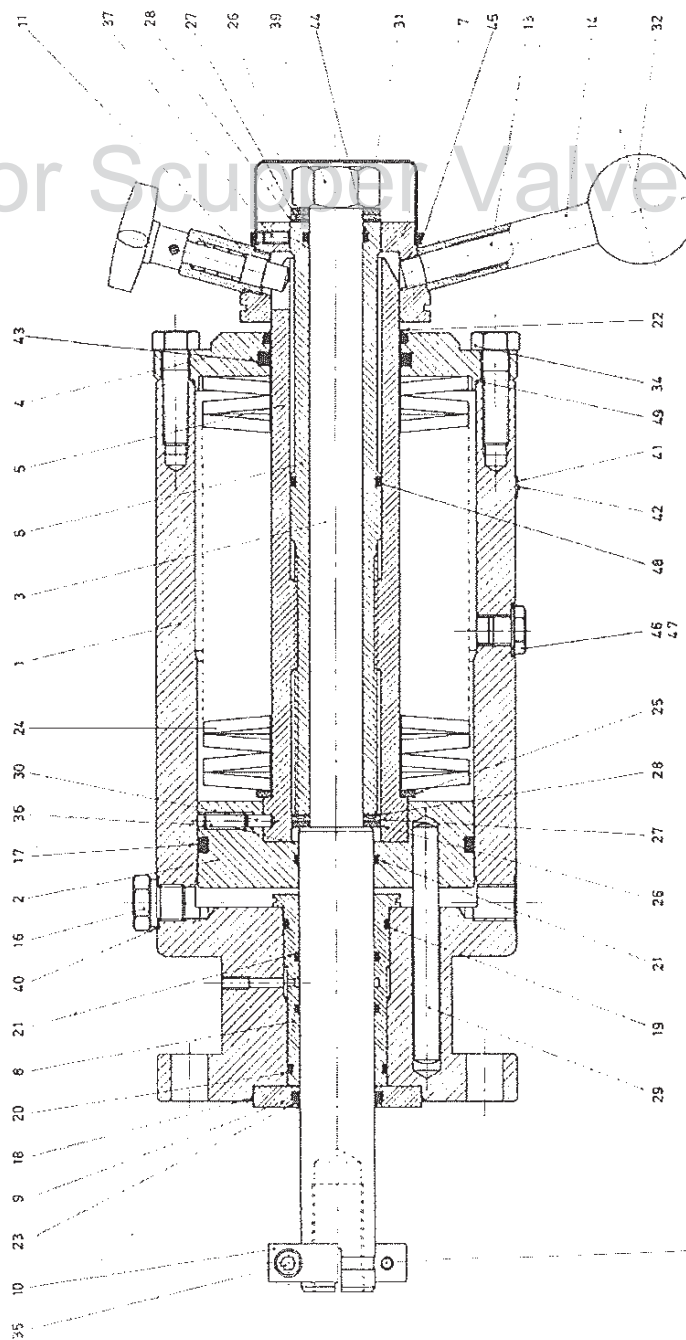
 DANFOSS SYSTEM HYDRAULIK A/S	PARTS-, SPARE PARTS, & MATERIAL LIST			
	COMPONENT: TYPE & VERSION		SHEET: 1 OF: 2	
	KFCM 42 - A1		160B0330 ISSUE	
			PSM.NO 042P653 ×	
Notes: All items with stated ID nos. can be purchased as spare parts. When ordering spare parts - state ID no.		DATE	BY	CHECK
DRAWINGS REFERRED TO:				
DRAWING NO	REF.	DESCRIPTION		
052B4811	a	Assembly drawing		
	b			
	c			
	d			
		921021	LSI	
		860829	LSI	OPB 2

ITEM Nos. or capital letters	REF	ID NO.	PARTS DESCRIPTION	CTM no. refers to DSH sheets: COMPARISON TABLES for MATERIALS		CTM NO.
				QTY	MATERIAL	
1	a		Housing	1	GGG 40	A10
2	a		Piston	1	GGG 40	A10
3	a		Spindle	1	S-1802	F10
4	a		Top part	1	SKF 280	B54
5	a		Spring guide	1	MS 58	L05
6	a		Spindle f. man. operation	1	MS 58	L05
7	a		Retainer	1	MS 58	L05
8	a		Bushing	1	Esm. B	L50
9	a		Stop bush	1	Esm. B	L50
10	a	045E4371	Clamping ring	1	S-1802	F10
11	a	044-4551	Release lever unit	1		
			Compression spring	1	St. 60	
			Spring holder	1	Esm. B	L50
			Locking ring	1	Ms 58	L05
			Pointed screw M4 x 4 DIN 916	1	70/A2	7A2
			Crosshead DIN 6335	1	EL-Zn+	
13	a	033E3842	Hand lever shaft	2	AISI 304	F05
16	a	033E6181	Screw-plug 3/8"RG	2	9SMnPb28	B10
17	a		O-ring 89.3 x 5.7	1	NBR 70	NBR
18	a		O-ring 72.75 x 1.78	1	NBR 70	NBR
19	a		O-ring 37.5 x 3.0	1	NBR 70	NBR
20	a		O-ring 35.5 x 3.0	1	NBR 70	NBR
21	a		O-ring 29.5 x 3.0	3	NBR 70	NBR
22	a		Scraper ø50/ø60-7/10	1	NBR 90	
23	a		Scraper ø30/ø38-7/4	1	NBR 90	
24	a	231-1013	Disc spring 100/51 x 5.0	23	50CrV4	N15
25	a		Thrust washer ø50/ø62 x 3.0	1	C-75	
26	a		Thrust washer ø20/ø28 x 2.0	2	C-75	

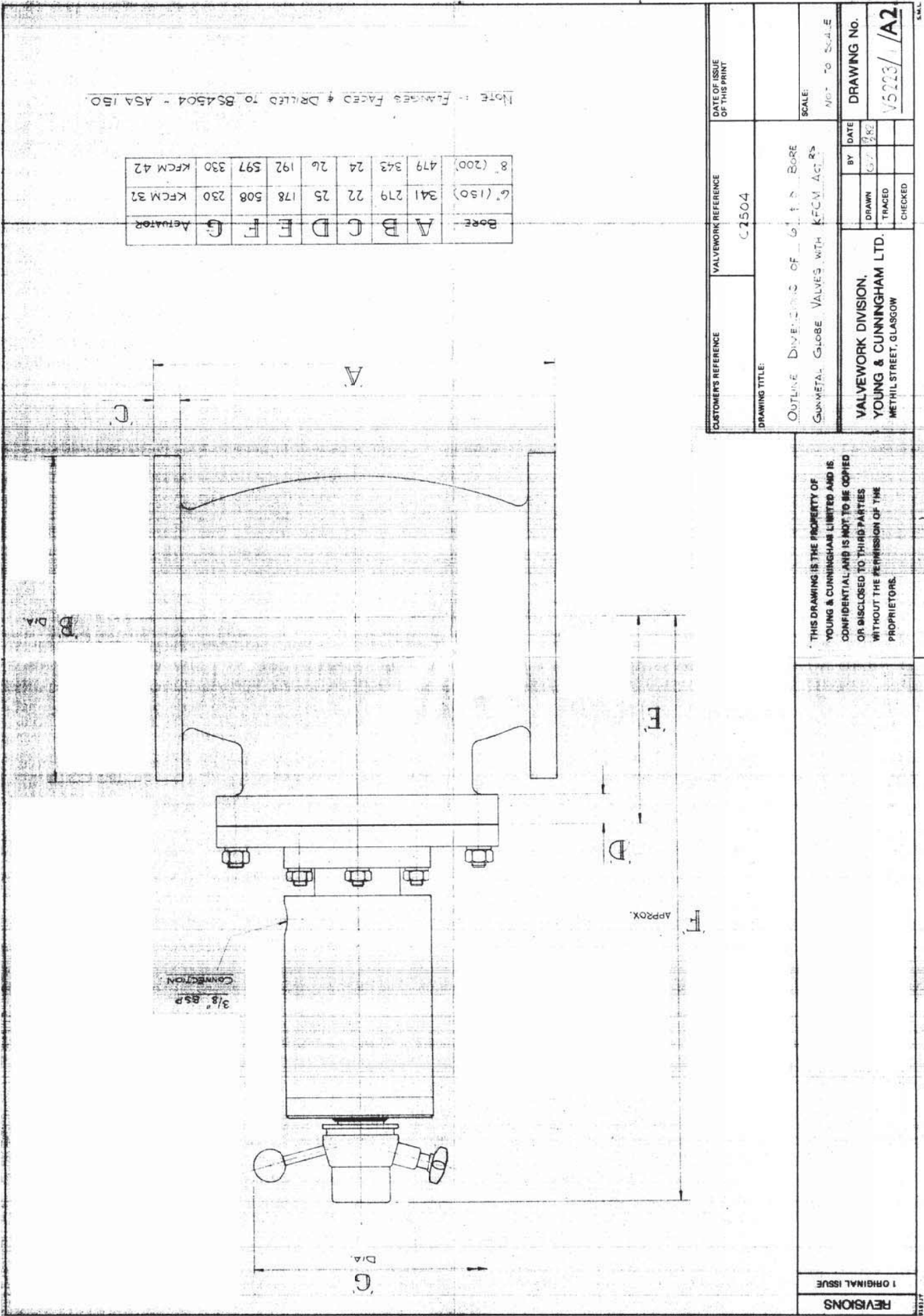
 DANFOSS SYSTEM HYDRAULIK A/S	PARTS, SPARE PARTS, & MATERIAL LIST		
	COMPONENT: TYPE & VERSION		SHEET: 2 OF: 2
	KFCM 42 - A1		160B0330
			PSM.NO 042P6532

ITEM Nos. or Capital Letters	REF.	ID NO.	CTM no. refers to DSH sheets: COMPARISON TABLES for MATERIALS				CTM NO.
			PARTS DESCRIPTION	QTY	MATERIAL		
29	a		Pin $\phi 10 \times 90$ DIN 7	1	St.50K		
30	a		Cyl. roller $\phi 4 \times 6$	1	100Cr6		ROL
31	a	234-2031	Top cap $\phi 54 \times 39$	1	PVC		
32	a	234-0848	Knob f. handle $\phi 40 \times \phi 12$	2	Phenol		
34	a	250-2136	Screw M12 x 40, 6K DIN 933	6	8.8		08.8
35	a	251-1105	Screw M 8 x 25 C-I6K DIN 912	2	70/A2		7A2
36	a		Pointed screw M5 x 10 DIN 915	1	14.9		14.9
37	a		Pointed screw M6 x 6 DIN 916	3	70/A2		7A2
39	a		Nut M18 DIN 934	1	50/A2		5A2
40	a	208-0053	Washer $\phi 17/\phi 22 \times 1.5$	2	Copper DLP		L02
41	a		Name plate 74 x 51 x 0.5	1	Stainless		F90
42	a		Pin $\phi 1.9 \times 5$	4	50/A2		5A2
43	a		X-ring 50.17/60.83 x 5.33	1	NBR 85		PD
44	a		O-ring 19.6 x 2.4	1	NBR 70		NBR
45	a		Cable ties 5 x 360	1	Nylon 6.6		
46	a	023-6771	Air escape valve	1			
			Housing	1	MS 58		L05
			Cone spindle	1	MS 58		L05
			Compression spring	1	St.60		
			Disc $\phi 5.3$ DIN 125	1	Steel		
			O-ring 5.1 x 1.6	1	NBR 70		NBR
			Pin 1.5 x 15	1	Copper DLP		L02
47	a	208-0053	Washer $\phi 17/\phi 22 \times 1.5$	1	Copper DLP		L02
48	a		O-ring 35.5 x 3.0	1	NBR 70		NBR
49	a		O-ring 101.32 x 1.78	1	NBR 70		NBR
219-0177 Seal kit KFCM 42							
Consisting of:							
Item 17-18-19-20-21-							
22-23-43-44-48-49.							

Actuator Scupper Valve Details



1. PROJECT 2. DESCRIPTION 3. DATE 4. BY 5. FOR 6. REVISIONS 7. APPROVED 8. DATE 9. BY 10. FOR 11. REVISIONS 12. APPROVED 13. DATE 14. BY 15. FOR 16. REVISIONS 17. APPROVED 18. DATE 19. BY 20. FOR 21. REVISIONS 22. APPROVED 23. DATE 24. BY 25. FOR 26. REVISIONS 27. APPROVED 28. DATE 29. BY 30. FOR 31. REVISIONS 32. APPROVED 33. DATE 34. BY 35. FOR 36. REVISIONS 37. APPROVED 38. DATE 39. BY 40. FOR 41. REVISIONS 42. APPROVED 43. DATE 44. BY 45. FOR 46. REVISIONS 47. APPROVED 48. DATE 49. BY 50. FOR 51. REVISIONS 52. APPROVED 53. DATE 54. BY 55. FOR 56. REVISIONS 57. APPROVED 58. DATE 59. BY 60. FOR 61. REVISIONS 62. APPROVED 63. DATE 64. BY 65. FOR 66. REVISIONS 67. APPROVED 68. DATE 69. BY 70. FOR 71. REVISIONS 72. APPROVED 73. DATE 74. BY 75. FOR 76. REVISIONS 77. APPROVED 78. DATE 79. BY 80. FOR 81. REVISIONS 82. APPROVED 83. DATE 84. BY 85. FOR 86. REVISIONS 87. APPROVED 88. DATE 89. BY 90. FOR 91. REVISIONS 92. APPROVED 93. DATE 94. BY 95. FOR 96. REVISIONS 97. APPROVED 98. DATE 99. BY 100. FOR 101. REVISIONS 102. APPROVED 103. DATE 104. BY 105. FOR 106. REVISIONS 107. APPROVED 108. DATE 109. BY 110. FOR 111. REVISIONS 112. APPROVED 113. DATE 114. BY 115. FOR 116. REVISIONS 117. APPROVED 118. DATE 119. BY 120. FOR 121. REVISIONS 122. APPROVED 123. DATE 124. BY 125. FOR 126. REVISIONS 127. APPROVED 128. DATE 129. BY 130. FOR 131. REVISIONS 132. APPROVED 133. DATE 134. BY 135. FOR 136. REVISIONS 137. APPROVED 138. DATE 139. BY 140. FOR 141. REVISIONS 142. APPROVED 143. DATE 144. BY 145. FOR 146. REVISIONS 147. APPROVED 148. DATE 149. BY 150. FOR 151. REVISIONS 152. APPROVED 153. DATE 154. BY 155. FOR 156. REVISIONS 157. APPROVED 158. DATE 159. BY 160. FOR 161. REVISIONS 162. APPROVED 163. DATE 164. BY 165. FOR 166. REVISIONS 167. APPROVED 168. DATE 169. BY 170. FOR 171. REVISIONS 172. APPROVED 173. DATE 174. BY 175. FOR 176. REVISIONS 177. APPROVED 178. DATE 179. BY 180. FOR 181. REVISIONS 182. APPROVED 183. DATE 184. BY 185. FOR 186. REVISIONS 187. APPROVED 188. DATE 189. BY 190. FOR 191. REVISIONS 192. APPROVED 193. DATE 194. BY 195. FOR 196. REVISIONS 197. APPROVED 198. DATE 199. BY 200. FOR 201. REVISIONS 202. APPROVED 203. DATE 204. BY 205. FOR 206. REVISIONS 207. APPROVED 208. DATE 209. BY 210. FOR 211. REVISIONS 212. APPROVED 213. DATE 214. BY 215. FOR 216. REVISIONS 217. APPROVED 218. DATE 219. BY 220. FOR 221. REVISIONS 222. APPROVED 223. DATE 224. BY 225. FOR 226. REVISIONS 227. APPROVED 228. DATE 229. BY 230. FOR 231. REVISIONS 232. APPROVED 233. DATE 234. BY 235. FOR 236. REVISIONS 237. APPROVED 238. DATE 239. BY 240. FOR 241. REVISIONS 242. APPROVED 243. DATE 244. BY 245. FOR 246. REVISIONS 247. APPROVED 248. DATE 249. BY 250. 	
--	--

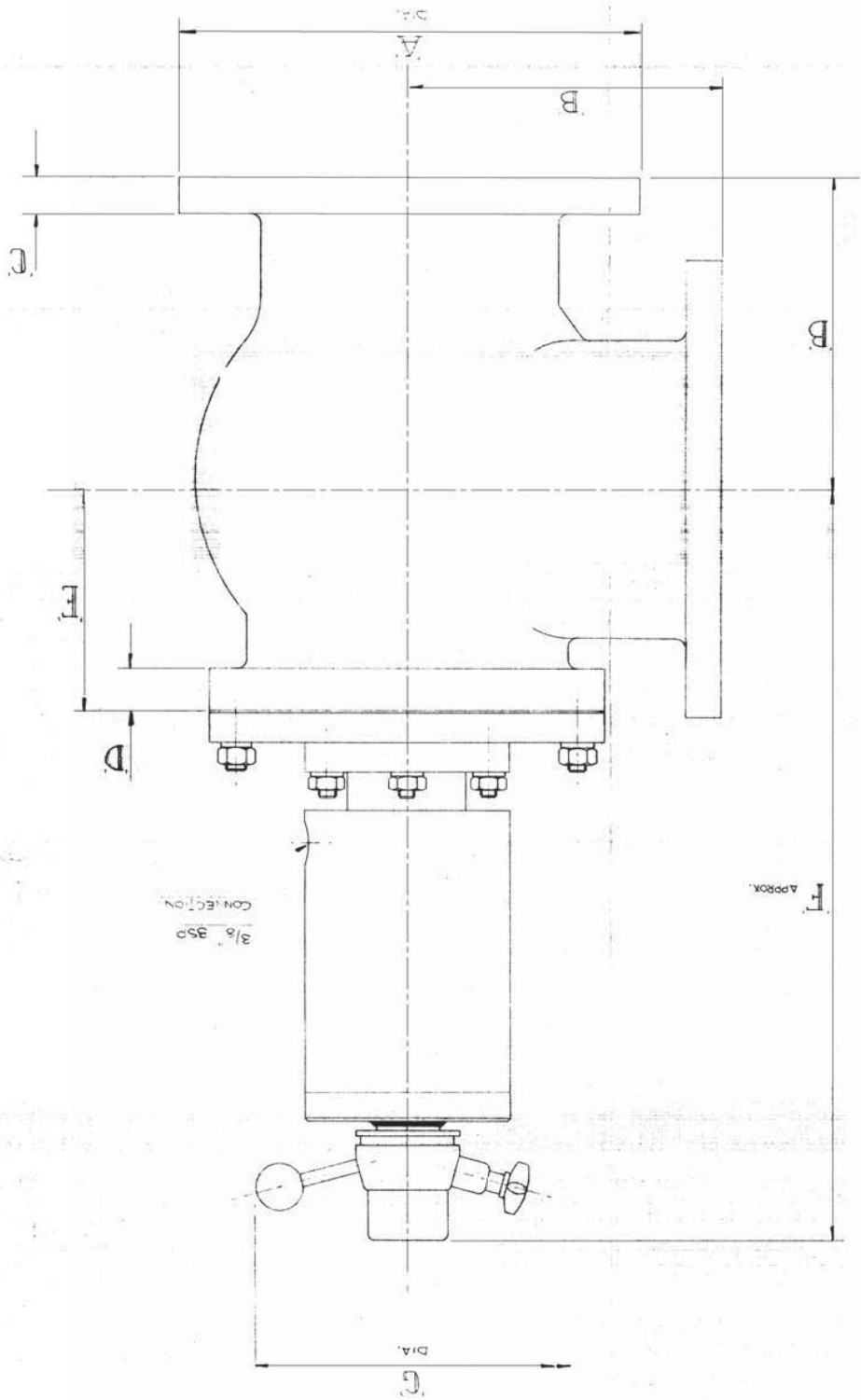


THIS DRAWING IS THE PROPERTY OF
YOUNG & CUNNINGHAM LIMITED AND IS
CONFIDENTIAL AND IS NOT TO BE COPIED
OR DISCLOSED TO THIRD PARTIES
WITHOUT THE PERMISSION OF THE
PROPRIETORS

REVISIONS
1 ORIGINAL ISSUE

CUSTOMER'S REFERENCE	VALVEWORK REFERENCE	DATE OF ISSUE OF THIS PRINT
	C2504	
DRAWING TITLE:		SCALE:
OUTLINE DIMENSIONS OF GLOBE VALVE WITH KFCM ACT		NOT TO SCALE
VALVEWORK DIVISION, YOUNG & CUNNINGHAM LTD., METHIL STREET, GLASGOW		DRAWING No. V5223/A2
BY DATE		CHECKED
DRAWN 6/7/82		
TRACED		

Young & Cunningham Valve 5224



3/8" 350 CONNECTION

F APPROX.

NOTE: FLANGED FACED & DRILLED TO ECU-504 - ASA 150

THIS DRAWING IS THE PROPERTY OF YOUNG & CUNNINGHAM LIMITED AND IS CONFIDENTIAL AND IS NOT TO BE COPIED OR REPRODUCED IN ANY MANNER WITHOUT THE PERMISSION OF THE COMPANY.

1 ORIGINAL ISSUE

CUSTOMER'S REFERENCE	VALVEWORK REFERENCE	DATE OF ISSUE OF THIS PRINT
	C2504	
DRAWING TITLE:		
OUTLINE DIMENSIONS OF 4" 5" 6" BORE		
GUMMETAL RIGHT ANGLE VALVES & KFCM ACT ^{RS}		SCALE: NOT TO SCALE
VALVEWORK DIVISION, YOUNG & CUNNINGHAM LTD, METHIL STREET, GLASGOW		DRAWING No. V5224 / 1/A2
BY	DATE	
GM	2/82	
DRAWN	TRACED	CHECKED