



**RETURN BIDS TO:**  
**RETOURNER LES SOUMISSIONS À:**  
Réception des soumissions - TPSGC / Bid  
Receiving - PWGSC  
1550 Avenue d'Estimauville  
1550 D'Estimauville Avenue  
Québec  
Québec  
G1J 0C7

## REQUEST FOR PROPOSAL DEMANDE DE PROPOSITION

### Proposal To: Public Works and Government Services Canada

We hereby offer to sell to Her Majesty the Queen in right of Canada, in accordance with the terms and conditions set out herein, referred to herein or attached hereto, the goods, services, and construction listed herein and on any attached sheets at the price(s) set out therefor.

### Proposition aux: Travaux Publics et Services Gouvernementaux Canada

Nous offrons par la présente de vendre à Sa Majesté la Reine du chef du Canada, aux conditions énoncées ou incluses par référence dans la présente et aux annexes ci-jointes, les biens, services et construction énumérés ici sur toute feuille ci-annexée, au(x) prix indiqué(s).

### Comments - Commentaires

Vendor/Firm Name and Address  
Raison sociale et adresse du  
fournisseur/de l'entrepreneur

Issuing Office - Bureau de distribution  
TPSGC - PWGSC  
601 - 1550 Avenue d'Estimauville  
Québec  
Québec  
G1J 0C7

<b>Title - Sujet</b> Valve parts	
<b>Solicitation No. - N° de l'invitation</b> F3017-16N481/A	<b>Date</b> 2016-07-14
<b>Client Reference No. - N° de référence du client</b> F3017-16N481	
<b>GETS Reference No. - N° de référence de SEAG</b> PW-\$QCW-029-16815	
<b>File No. - N° de dossier</b> QCW-6-39035 (029)	<b>CCC No./N° CCC - FMS No./N° VME</b>
<b>Solicitation Closes - L'invitation prend fin</b> <b>at - à 02:00 PM</b> <b>on - le 2016-08-24</b>	<b>Time Zone</b> <b>Fuseau horaire</b> Heure Avancée de l'Est HAE
<b>F.O.B. - F.A.B.</b> <b>Plant-Usine:</b> <input type="checkbox"/> <b>Destination:</b> <input checked="" type="checkbox"/> <b>Other-Autre:</b> <input type="checkbox"/>	
<b>Address Enquiries to: - Adresser toutes questions à:</b> Laliberté Seyer, Arlow	<b>Buyer Id - Id de l'acheteur</b> qcw029
<b>Telephone No. - N° de téléphone</b> (418) 649-2824 ( )	<b>FAX No. - N° de FAX</b> (418) 648-2209
<b>Destination - of Goods, Services, and Construction:</b> <b>Destination - des biens, services et construction:</b> NGCC DES GROSEILLIERS PÊCHES ET OCÉANS CANADA GARDE CÔTIÈRE 101 BOUL.CHAMPLAIN QUEBEC Québec G1K7Y7 Canada	

Instructions: See Herein

Instructions: Voir aux présentes

<b>Delivery Required - Livraison exigée</b> VOIR DOC	<b>Delivery Offered - Livraison proposée</b>
<b>Vendor/Firm Name and Address</b> <b>Raison sociale et adresse du fournisseur/de l'entrepreneur</b>	
<b>Telephone No. - N° de téléphone</b> <b>Facsimile No. - N° de télécopieur</b>	
<b>Name and title of person authorized to sign on behalf of Vendor/Firm</b> <b>(type or print)</b> <b>Nom et titre de la personne autorisée à signer au nom du fournisseur/</b> <b>de l'entrepreneur (taper ou écrire en caractères d'imprimerie)</b>	
<b>Signature</b>	<b>Date</b>

---

## TABLE OF CONTENTS

<b>TABLE OF CONTENTS .....</b>	<b>1</b>
<b>PART 1 - GENERAL INFORMATION .....</b>	<b>2</b>
1.1 REQUIREMENT .....	2
1.2 DEBRIEFINGS .....	2
1.3 TRADE AGREEMENTS .....	2
<b>PART 2 - BIDDER INSTRUCTIONS .....</b>	<b>3</b>
2.1 STANDARD INSTRUCTIONS, CLAUSES AND CONDITIONS .....	3
2.2 SUBMISSION OF BIDS.....	3
2.3 ENQUIRIES - BID SOLICITATION.....	3
2.4 APPLICABLE LAWS.....	3
<b>PART 3 - BID PREPARATION INSTRUCTIONS.....</b>	<b>4</b>
3.1 BID PREPARATION INSTRUCTIONS .....	4
<b>PART 4 - EVALUATION PROCEDURES AND BASIS OF SELECTION .....</b>	<b>5</b>
4.1 EVALUATION PROCEDURES.....	5
4.2 BASIS OF SELECTION.....	6
<b>PART 5 – CERTIFICATIONS AND ADDITIONAL INFORMATION .....</b>	<b>7</b>
5.1 CERTIFICATIONS REQUIRED WITH THE BID.....	7
5.2 CERTIFICATIONS PRECEDENT TO CONTRACT AWARD AND ADDITIONAL INFORMATION .....	7
<b>PART 6 - RESULTING CONTRACT CLAUSES .....</b>	<b>8</b>
6.1 SECURITY REQUIREMENTS .....	8
6.2 REQUIREMENT .....	8
6.3 STANDARD CLAUSES AND CONDITIONS.....	8
6.4 TERM OF CONTRACT .....	8
6.5 AUTHORITIES .....	8
6.6 PAYMENT .....	9
6.7 INVOICING INSTRUCTIONS .....	10
6.8 CERTIFICATIONS .....	10
6.9 APPLICABLE LAWS.....	10
6.10 PRIORITY OF DOCUMENTS .....	10
6.11 SHIPPING INSTRUCTIONS - DELIVERY AT DESTINATION .....	10
6.12 INSPECTION AND ACCEPTANCE.....	10
6.13 SACC <i>MANUAL</i> CLAUSES .....	10
<b>ANNEX A - REQUIREMENT .....</b>	<b>11</b>
PART 1: SCOPE .....	11
PART 2: REFERENCES (DRAWINGS).....	11
PART 3. MANDATORY PERFORMANCE CRITERIA (MUST) .....	11
PART 4 : DELIVERY LOCATION.....	15
<b>ANNEX B – BASIS OF PAYMENT.....</b>	<b>16</b>
<b>ANNEX C – EQUIVALENT PRODUCTS BRANDS AND MODELS .....</b>	<b>18</b>
<b>ANNEX D - DRAWINGS .....</b>	<b>19</b>

Solicitation No. - N° de l'invitation  
F3017-16N481/A  
Client Ref. No. - N° de réf. du client  
F3017-16N481

Amd. No. - N° de la modif.  
File No. - N° du dossier  
QCW-6-39035

Buyer ID - Id de l'acheteur  
QCW029  
CCC No./N° CCC - FMS No./N° VME

---

## **PART 1 - GENERAL INFORMATION**

### **1.1 Requirement**

The requirement is detailed under Article 6.2 of the resulting contract clauses.

### **1.2 Debriefings**

Bidders may request a debriefing on the results of the bid solicitation process. Bidders should make the request to the Contracting Authority within 15 working days from receipt of the results of the bid solicitation process. The debriefing may be in writing, by telephone or in person.

### **1.3 Trade Agreements**

The requirement is subject to the provisions of the North American Free Trade Agreement (NAFTA), and the Agreement on Internal Trade (AIT).

## PART 2 - BIDDER INSTRUCTIONS

### 2.1 Standard Instructions, Clauses and Conditions

All instructions, clauses and conditions identified in the bid solicitation by number, date and title are set out in the *Standard Acquisition Clauses and Conditions Manual* (<https://buyandsell.gc.ca/policy-and-guidelines/standard-acquisition-clauses-and-conditions-manual>) issued by Public Works and Government Services Canada.

Bidders who submit a bid agree to be bound by the instructions, clauses and conditions of the bid solicitation and accept the clauses and conditions of the resulting contract.

The 2003 (2016-04-04) Standard Instructions - Goods or Services - Competitive Requirements, are incorporated by reference into and form part of the bid solicitation.

#### 2.1.1 SACC Manual Clauses

B3000T (2006-06-16) Equivalent Products (<https://buyandsell.gc.ca/policy-and-guidelines/standard-acquisition-clauses-and-conditions-manual/5/B/B3000T/5> )  
C9000T (2010-08-16) Pricing (<https://buyandsell.gc.ca/policy-and-guidelines/standard-acquisition-clauses-and-conditions-manual/5/C/C9000T/3> )

### 2.2 Submission of Bids

Bids must be submitted only to Public Works and Government Services Canada (PWGSC) Bid Receiving Unit by the date, time and place indicated on page 1 of the bid solicitation.

You can also submit your bid by facsimile at (1) 418-648-2209, by the date, time and place indicated on page 1 of the bid solicitation.

### 2.3 Enquiries - Bid Solicitation

All enquiries must be submitted in writing to the Contracting Authority [arlow.laliberteseyer@tpsgc-pwgsc.gc.ca](mailto:arlow.laliberteseyer@tpsgc-pwgsc.gc.ca) no later than 10 calendar days before the bid closing date. Enquiries received after that time may not be answered.

Bidders should reference as accurately as possible the numbered item of the bid solicitation to which the enquiry relates. Care should be taken by Bidders to explain each question in sufficient detail in order to enable Canada to provide an accurate answer. Technical enquiries that are of a proprietary nature must be clearly marked "proprietary" at each relevant item. Items identified as "proprietary" will be treated as such except where Canada determines that the enquiry is not of a proprietary nature. Canada may edit the question(s) or may request that the Bidder do so, so that the proprietary nature of the question(s) is eliminated, and the enquiry can be answered to all Bidders. Enquiries not submitted in a form that can be distributed to all Bidders may not be answered by Canada.

### 2.4 Applicable Laws

Any resulting contract must be interpreted and governed, and the relations between the parties determined, by the laws in force in Quebec.

Bidders may, at their discretion, substitute the applicable laws of a Canadian province or territory of their choice without affecting the validity of their bid, by deleting the name of the Canadian province or territory specified and inserting the name of the Canadian province or territory of their choice. If no change is made, it acknowledges that the applicable laws specified are acceptable to the Bidders.

## PART 3 - BID PREPARATION INSTRUCTIONS

### 3.1 Bid Preparation Instructions

Canada requests that Bidders provide their bid in separately bound sections as follows:

Section I: Technical Bid (1 hard copy)

Section II: Financial Bid (1 hard copy)

Section III: Certifications (1 hard copy)

Prices must appear in the financial bid only. No prices must be indicated in any other section of the bid.

Canada requests that Bidders follow the format instructions described below in the preparation of their bid:

- (a) use 8.5 x 11 inch (216 mm x 279 mm) paper;
- (b) use a numbering system that corresponds to the bid solicitation.

In April 2006, Canada issued a policy directing federal departments and agencies to take the necessary steps to incorporate environmental considerations into the procurement process [Policy on Green Procurement](http://www.tpsgc-pwgsc.gc.ca/ecologisation-greening/achats-procurement/politique-policy-eng.html) (<http://www.tpsgc-pwgsc.gc.ca/ecologisation-greening/achats-procurement/politique-policy-eng.html>). To assist Canada in reaching its objectives, Bidders should:

- 1) use 8.5 x 11 inch (216 mm x 279 mm) paper containing fibre certified as originating from a sustainably-managed forest and containing minimum 30% recycled content; and
- 2) use an environmentally-preferable format including black and white printing instead of colour printing, printing double sided/duplex, using staples or clips instead of cerlox, duotangs or binders.

#### Section I: Technical Bid

In their technical bid, bidders must explain and demonstrate how they intend to meet the requirements detailed at **Annex A - Requirement**. Bidders should fill out **section 4.1.1.1 – Mandatory Technical Criteria**.

**If equivalent products are submitted, bidders must complete Annex C – Equivalent Products Brands and Models.** Also, they must explain and demonstrate in their technical bid how they intend to meet the mandatory performance criterias listed in **part 3 of Annex A – Requirement**, in accordance with the provisions mentioned in clause B3000T (2006-06-16) Equivalent Products (<https://buyandsell.gc.ca/policy-and-guidelines/standard-acquisition-clauses-and-conditions-manual/5/B/B3000T/5>).

#### Section II: Financial Bid

Bidders must submit their financial bid in accordance with the Basis of Payment at **Annex B- Basis of Payment**. The total amount of Applicable Taxes must be shown separately.

##### 3.1.1 Exchange Rate Fluctuation

C3011T (2013-11-06) Exchange Rate Fluctuation (<https://buyandsell.gc.ca/policy-and-guidelines/standard-acquisition-clauses-and-conditions-manual/5/C/C3011T/5>)

#### Section III: Certifications

Bidders must submit the certifications required under Part 5.

## PART 4 - EVALUATION PROCEDURES AND BASIS OF SELECTION

### 4.1 Evaluation Procedures

- (a) Bids will be assessed in accordance with the entire requirement of the bid solicitation including the technical and financial evaluation criteria.
- (b) An evaluation team composed of representatives of Canada will evaluate the bids.

#### 4.1.1 Technical Evaluation

##### 4.1.1.1 Mandatory Technical Criteria

a) If equivalent products are submitted, bidders must complete Annex C – Equivalent Products Brands and Models. Also, bidders must include with their proposal the datasheets of the equivalent products offered. Those datasheets must demonstrate how the equivalent products meet each of the mandatory performance criteria listed in part 3 of Annex A – Requirement. A “Datasheet” is defined as a technical document, for examples a brochure and/or technical literature and/or drawing and/or a test report. The document **must** provide detailed information on each performance criteria and/or specification. Where it is necessary to refer to other documentation that is included in the proposal, bidders should include the precise location of the reference material including the title of the document, and the page and paragraph numbers. It is the bidder's responsibility to provide enough details to permit a complete evaluation. **Any proposal that includes equivalent products and does not clearly demonstrate compliance with each of the mandatory performance criteria listed in part 3 of Annex A – Requirement will be considered non-responsive.**

b) Although the bidders must proposed products that meet all the mandatory performance criteria described in part 3 of Annex A - Requirement, at the closure date, bids will be evaluated on the following mandatory technical criteria.

**IMPORTANT:** The bidder should indicate if the product proposed meet or does not meet every mandatory criteria by checking the appropriate box. If no equivalent product are proposed, box “N.A.” should be checked.

#	Mandatory technical criteria	COMPLIANT	NON-COMPLIANT	N.A.
1	The contractor must provide the parts listed in part 3 of Annex A – Requirement. The products must meet all mandatory performance criteria listed in part 3 of Annex A – Requirement.			
2	If equivalent products are proposed: <ul style="list-style-type: none"><li>– the equivalent products must be completely interchangeable with the parts listed in part 3 of Annex A - Requirement, in accordance with the provisions mentioned in clause B3000T (2006-06-16) Equivalent Products</li><li>– the contractor must provide the complete list of submitted parts (brands, models and serial numbers) by completing Annex C – Equivalent Products Brands and Models</li><li>– the contractor must provide data sheets demonstrating that the proposed products are equivalent and meet the mandatory performance criteria</li></ul>			

#### 4.1.2 Financial Evaluation

*SACC Manual* Clause [A0220T](#) 2014-06-26, Evaluation of Price – Bid

Unless the bid solicitation specifically requires bids to be submitted in Canadian currency, bids submitted in foreign currency will be converted to Canadian currency for evaluation purposes. The rate given by the Bank of Canada in effect on the bid solicitation closing date, or on another date specified in the bid solicitation, will be applied as a conversion factor to the bids submitted in foreign currency.

The bidder must fill out and include with its proposal the **Annex B** - Basis of Payment.

#### 4.2 Basis of Selection

A bid must comply with the requirements of the bid solicitation including the **Annex A - Requirement** and meet all mandatory technical evaluation criteria listed section 4.1.1.1 to be declared responsive. The responsive bid with the lowest evaluated price will be recommended for award of a contract.

---

## PART 5 – CERTIFICATIONS AND ADDITIONAL INFORMATION

Bidders must provide the required certifications and additional information to be awarded a contract.

The certifications provided by Bidders to Canada are subject to verification by Canada at all times. Canada will declare a bid non-responsive, or will declare a contractor in default if any certification made by the Bidder is found to be untrue whether made knowingly or unknowingly, during the bid evaluation period or during the contract period.

The Contracting Authority will have the right to ask for additional information to verify the Bidder's certifications. Failure to comply and to cooperate with any request or requirement imposed by the Contracting Authority will render the bid non-responsive or constitute a default under the Contract.

### 5.1 Certifications Required with the Bid

Bidders must submit the following duly completed certifications as part of their bid.

#### 5.1.1 Declaration of Convicted Offences

As applicable, pursuant to subsection Declaration of Convicted Offences of section 01 of the Standard Instructions, the Bidder must provide with its bid, a completed [Declaration Form](http://www.tpsgc-pwgsc.gc.ca/ci-if/formulaire-form-eng.html) (<http://www.tpsgc-pwgsc.gc.ca/ci-if/formulaire-form-eng.html>), to be given further consideration in the procurement process.

### 5.2 Certifications Precedent to Contract Award and Additional Information

The certifications and additional information listed below should be submitted with the bid, but may be submitted afterwards. If any of these required certifications or additional information is not completed and submitted as requested, the Contracting Authority will inform the Bidder of a time frame within which to provide the information. Failure to provide the certifications or the additional information listed below within the time frame provided will render the bid non-responsive.

#### 5.2.1 Integrity Provisions – List of Names

Bidders who are incorporated, including those bidding as a joint venture, must provide a complete list of names of all individuals who are currently directors of the Bidder.

Bidders bidding as sole proprietorship, as well as those bidding as a joint venture, must provide the name of the owner(s).

Bidders bidding as societies, firms or partnerships do not need to provide lists of names.

#### 5.2.2 Federal Contractors Program for Employment Equity - Bid Certification

By submitting a bid, the Bidder certifies that the Bidder, and any of the Bidder's members if the Bidder is a Joint Venture, is not named on the Federal Contractors Program (FCP) for employment equity "[FCP Limited Eligibility to Bid](http://www.labour.gc.ca/eng/standards_equity/eq/emp/fcp/list/inelig.shtml)" list ([http://www.labour.gc.ca/eng/standards\\_equity/eq/emp/fcp/list/inelig.shtml](http://www.labour.gc.ca/eng/standards_equity/eq/emp/fcp/list/inelig.shtml)) available from [Employment and Social Development Canada \(ESDC\) - Labour's](#) website.

Canada will have the right to declare a bid non-responsive if the Bidder, or any member of the Bidder if the Bidder is a Joint Venture, appears on the "[FCP Limited Eligibility to Bid](#)" list at the time of contract award.



---

## PART 6 - RESULTING CONTRACT CLAUSES

The following clauses and conditions apply to and form part of any contract resulting from the bid solicitation.

### 6.1 Security Requirements

6.1.1 There is no security requirement applicable to this Contract.

### 6.2 Requirement

The Contractor must provide the items detailed in **Annex A - Requirement**.

### 6.3 Standard Clauses and Conditions

All clauses and conditions identified in the Contract by number, date and title are set out in the [Standard Acquisition Clauses and Conditions Manual](https://buyandsell.gc.ca/policy-and-guidelines/standard-acquisition-clauses-and-conditions-manual) (https://buyandsell.gc.ca/policy-and-guidelines/standard-acquisition-clauses-and-conditions-manual) issued by Public Works and Government Services Canada.

#### 6.3.1 General Conditions

[2010A](#) (2016-04-04) General Conditions - Goods (Medium Complexity), apply to and form part of the Contract.

### 6.4 Term of Contract

#### 6.4.1 Period of the Contract

The period of the contract is the contract award date, until the ending date of the warranty, inclusively.

#### 6.4.2 Date of delivery

All the deliverables must be received no later than 10 weeks after contract award.

### 6.5 Authorities

#### 6.5.1 Contracting Authority

The Contracting Authority for the Contract is:

Name: Arlow Laliberté Seyer  
Title: Procurement Officer  
Public Works and Government Services Canada  
Acquisitions Branch  
Address: 1550, Avenue d'Estimauville  
Québec, QC G1J 0C7

Telephone: 418-649-2824  
Facsimile: 418-648-2209  
E-mail address: arlow.laliberteseyer@tpsgc-pwgsc.gc.ca

The Contracting Authority is responsible for the management of the Contract and any changes to the Contract must be authorized in writing by the Contracting Authority. The Contractor must not perform work in excess of or outside the scope of the Contract based on verbal or written requests or instructions from anybody other than the Contracting Authority.

## 6.5.2 Technical Authority

The Project Authority for the Contract is:

(Will be completed by Canada at the time of award)

Name: \_\_\_\_\_

Title: \_\_\_\_\_

Organization: \_\_\_\_\_

Address: \_\_\_\_\_

Telephone : \_\_\_\_ \_

Facsimile: \_\_\_\_ \_

E-mail address: \_\_\_\_\_

The Project Authority is the representative of the department or agency for whom the Work is being carried out under the Contract and is responsible for all matters concerning the technical content of the Work under the Contract. Technical matters may be discussed with the Project Authority, however the Project Authority has no authority to authorize changes to the scope of the Work. Changes to the scope of the Work can only be made through a contract amendment issued by the Contracting Authority.

## 6.5.4 Contractor's Representative

### General enquiries:

Name: \_\_\_\_\_

Title: \_\_\_\_\_

Address: \_\_\_\_\_

Telephone: \_\_\_\_ \_

Facsimile: \_\_\_\_ \_

E-mail address: \_\_\_\_\_

### Delivery follow-up:

Name: \_\_\_\_\_

Title: \_\_\_\_\_

Address: \_\_\_\_\_

Telephone: \_\_\_\_ \_

Facsimile: \_\_\_\_ \_

E-mail address: \_\_\_\_\_

## 6.6 Payment

### 6.6.1 Basis of Payment

In consideration of the Contractor satisfactorily completing all of its obligations under the Contract, the Contractor will be paid a firm price as specified in in Annex B, for a cost of \$ \_\_\_\_\_ (insert the amount at contract award). Customs duties are included and Applicable Taxes are extra.

Canada will not pay the Contractor for any design changes, modifications or interpretations of the Work, unless they have been approved, in writing, by the Contracting Authority before their incorporation into the Work.

### 6.6.2 Single Payment

H1000C (2008-05-12) Single Payment (<http://buyandsell.gc.ca/policy-and-guidelines/standard-acquisition-clauses-and-conditions-manual/5/H/H1000C/2> )

---

## 6.7 Invoicing Instructions

The Contractor must submit invoices in accordance with the section entitled "Invoice Submission" of the general conditions. Invoices cannot be submitted until all work identified in the invoice is completed.

## 6.8 Certifications

### 6.8.1 Compliance

The continuous compliance with the certifications provided by the Contractor in its bid and the ongoing cooperation in providing additional information are conditions of the Contract. Certifications are subject to verification by Canada during the entire period of the Contract. If the Contractor does not comply with any certification, fails to provide the additional information, or if it is determined that any certification made by the Contractor in its bid is untrue, whether made knowingly or unknowingly, Canada has the right, pursuant to the default provision of the Contract, to terminate the Contract for default.

## 6.9 Applicable Laws

The Contract must be interpreted and governed, and the relations between the parties determined, by the laws in force in Quebec.

## 6.10 Priority of Documents

If there is a discrepancy between the wording of any documents that appear on the list, the wording of the document that first appears on the list has priority over the wording of any document that subsequently appears on the list.

- (a) the Articles of Agreement;
- (b) 2010A (04-04-2016), General Conditions - Goods (Medium Complexity)
- (c) Annex A, Requirement;
- (d) Annex B, Basis of Payment
- (e) the Contractor's bid dated \_\_\_\_\_ (*insert date of bid*)

## 6.11 Shipping Instructions - Delivery at Destination

Goods must be consigned to the destination specified in the Contract and delivered Delivered Duty Paid (DDP): NGCC Des Groseilliers, Pêches et Océans Canada – Garde côtière, 101 boulevard Champlain, Québec (QC) G1k 7Y7, Canada, Incoterms 2000 for shipments from a commercial contractor.

## 6.12 Inspection and Acceptance

The Technical Authority is the Inspection Authority. All reports, deliverable items, documents, goods and all services rendered under the Contract are subject to inspection by the Inspection Authority or representative. Should any report, document, good or service not be in accordance with the requirements of the Statement of Work and to the satisfaction of the Inspection Authority, as submitted, the Inspection Authority will have the right to reject it or require its correction at the sole expense of the Contractor before recommending payment.

## 6.13 SACC Manual Clauses

Excess Goods (2006-06-16) B7500C (<https://buyandsell.gc.ca/policy-and-guidelines/standard-acquisition-clauses-and-conditions-manual/5/B/B7500C/1> )

---

## ANNEX A - REQUIREMENT

### Title : Leslie valve parts or the equivalent

#### Part 1: Scope

- 1.1 Provide the Canadian Coast Guard with multiple Leslie valve parts, or the equivalent.

#### Part 2: References (Drawings)

##### 2.1 Drawings (see Annex D)

- 2.1.1 Leslie, Diaphragm control valve, Drawing No. 10/8.4.3
- 2.1.2 Leslie, Diaphragm control valve, Drawing No. 10/8.4.2

#### Part 3. Mandatory performance criteria (must)

The Contractor is to bid on the supply of Leslie control valve replacement parts as indicated in the mandatory performance criteria listed in part 3.

All replacement parts must conform to all characteristics stated as mandatory performance criteria.

If the bid includes equivalent products to the ones listed in part 3, all equivalent products must be entirely interchangeable with the ones listed, in accordance with the terms and conditions of clause B3000T (2006-06-16) Equivalent Products (<https://buyandsell.gc.ca/policy-and-guidelines/standard-acquisition-clauses-and-conditions-manual/5/B/B3000T/5>) of the *Standard Acquisition Clauses and Conditions Manual*.

1. The following spare parts must be compatible with a Leslie, Diaphragm controlled valve, Classe (D)

DOT, Cast Bronze 3" CODE: 22J4B2ALA. Reference: Drawing No. 10/8.4.3.

- 1.1. Packing Flange (Reference : Drawing No. 10/8.4.3 - item #30), Leslie part reference #63892 or the equivalent

- 1.1.1. Material: Brass
- 1.1.2. Material Spec: ASTM B-16
- 1.1.3. Max air control PSI: 60
- 1.1.4. Cooling Fluid: sea water
- 1.1.5. Max sea water PSI: 150

- 1.2. Packing Follower (Reference : Drawing No. 10/8.4.3 - item #31), Leslie part reference #63925 or the equivalent

- 1.2.1. Material: Brass
- 1.2.2. Material Spec: ASTM B-16
- 1.2.3. Max air control PSI: 60
- 1.2.4. Cooling Fluid: sea water
- 1.2.5. Max sea water PSI: 150

- 
- 1.3. Packing set teflon (Reference : Drawing No. 10/8.4.3 - item #32), Leslie part reference #64004 or the equivalent
- 1.3.1. Material: Teflon
  - 1.3.2. Material Spec: Commercial
  - 1.3.3. Max air control PSI: 60
  - 1.3.4. Cooling Fluid: Sea water
  - 1.3.5. Max sea water PSI: 150
- 1.4. O-ring (Reference : Drawing No. 10/8.4.3 - item # 34 et 39), Leslie part reference #64003 or the equivalent
- 1.4.1. Material: Synthetic rubber
  - 1.4.2. Material Spec: Buna N
  - 1.4.3. Max air control PSI: 60
  - 1.4.4. Cooling Fluid: Sea water
  - 1.4.5. Max sea water PSI: 150
- 1.5. Packing washer (Reference : Drawing No. 10/8.4.3 - item #35), Leslie part reference #63926 or the equivalent
- 1.5.1. Material: Monel
  - 1.5.2. Material Spec: ASTM B-164
  - 1.5.3. Max air control PSI: 60
  - 1.5.4. Cooling Fluid: Sea water
  - 1.5.5. Max sea water PSI: 150
- 1.6. Packing spring (Reference : Drawing No. 10/8.4.3 - item #36), Leslie part reference #63930 or the equivalent
- 1.6.1. Material: Monel
  - 1.6.2. Material Spec: Commercial
  - 1.6.3. Max air control PSI: 60
  - 1.6.4. Cooling Fluid: Sea water
  - 1.6.5. Max sea water PSI: 150
- 1.7. Valve plug (Reference : Drawing No. 10/8.4.3 - item #38), Leslie part reference #63968 or the equivalent
- 1.7.1. Material: Synthetic rubber
  - 1.7.2. Material Spec: Buna N
  - 1.7.3. Max air control PSI: 60
  - 1.7.4. Cooling Fluid: Sea water
  - 1.7.5. Max sea water PSI: 150

- 
- 1.8. Cage (Reference : Drawing No. 10/8.4.3 - item #40), Leslie part reference #63971 or the equivalent
- 1.8.1. Material: Cast bronze
  - 1.8.2. Material Spec: ASTM B-61
  - 1.8.3. Max air control PSI: 60
  - 1.8.4. Cooling Fluid: Sea water
  - 1.8.5. Max sea water PSI: 150
- 1.9. Load Ring (Reference : Drawing No. 10/8.4.3 - item #42), Leslie part reference #63964 or the equivalent
- 1.9.1. Material: Monel
  - 1.9.2. Material Spec: ASTM B-127
  - 1.9.3. Max air control PSI: 60
  - 1.9.4. Cooling Fluid: Sea water
  - 1.9.5. Max sea water PSI: 150
2. The following spare parts must be compatible with a Leslie, Diaphragm control valve, Classe (D) DOT, Cast Bronze 1" CODE: 22J4B20. Reference : Drawing No. 10/8.4.2
- 2.1. Packing Follower (Reference: Drawing No. 10/8.4.2 - item #31), Leslie part reference #63891 or the equivalent
- 2.1.1. Material: Brass
  - 2.1.2. Material Spec: ASTM B-16
  - 2.1.3. Max air control PSI: 60
  - 2.1.4. Cooling Fluid: Sea water
  - 2.1.5. Max sea water PSI: 150
- 2.2. Packing set teflon (Reference: Drawing No. 10/8.4.2 - item #32); Leslie part reference #63900 or the equivalent
- 2.2.1. Material: Teflon
  - 2.2.2. Material Spec: Commercial
  - 2.2.3. Max air control PSI: 60
  - 2.2.4. Cooling Fluid: Sea water
  - 2.2.5. Max sea water PSI: 150
- 2.3. O-ring (Reference: Drawing No. 10/8.4.2 - item # 34), Leslie part reference #63899 or the equivalent
- 2.3.1. Material: Synthetic rubber
  - 2.3.2. Material Spec: Buna
  - 2.3.3. Max air control PSI: 60
  - 2.3.4. Cooling Fluid: Sea water
  - 2.3.5. Max sea water PSI: 150

- 
- 2.4. Packing washer (Reference: Drawing No. 10/8.4.2 - item #35), Leslie part reference #63895 or the equivalent
- 2.4.1. Material: Monel
  - 2.4.2. Material Spec: ASTM B-164
  - 2.4.3. Max air control PSI: 60
  - 2.4.4. Cooling Fluid: Sea water
  - 2.4.5. Max sea water PSI: 150
- 2.5. Packing spring (Reference: Drawing No. 10/8.4.2 - item #36), Leslie part reference #63896 or the equivalent
- 2.5.1. Material: Monel
  - 2.5.2. Material Spec: Commercial
  - 2.5.3. Max air control PSI: 60
  - 2.5.4. Cooling Fluid: Sea water
  - 2.5.5. Max sea water PSI: 150
- 2.6. Valve plug (Reference: Drawing No. 10/8.4.2 - item #38), Leslie part reference #64045 or the equivalent
- 2.6.1. Material: Monel
  - 2.6.2. Material Spec: ASTM B-127
  - 2.6.3. Max air control PSI: 60
  - 2.6.4. Cooling Fluid: Sea water
  - 2.6.5. Max sea water PSI: 150
- 2.7. Cage (Reference: Drawing No. 10/8.4.2 - item #40), Leslie part reference #64049 or the equivalent
- 2.7.1. Material: Cast bronze
  - 2.7.2. Material Spec: ASTM B-61
  - 2.7.3. Max air control PSI: 60
  - 2.7.4. Cooling Fluid: Sea water
  - 2.7.5. Max sea water PSI: 150
- 2.8. Load Ring (Reference: Drawing No. 10/8.4.2 - item #42), Leslie part reference #64048 or the equivalent
- 2.8.1. Material: Monel
  - 2.8.2. Material Spec: ASTM B-127
  - 2.8.3. Max air control PSI: 60
  - 2.8.4. Cooling Fluid: Sea water
  - 2.8.5. Max sea water PSI: 150

Solicitation No. - N° de l'invitation  
F3017-16N481/A  
Client Ref. No. - N° de réf. du client  
F3017-16N481

Amd. No. - N° de la modif.  
File No. - N° du dossier  
QCW-6-39035

Buyer ID - Id de l'acheteur  
QCW029  
CCC No./N° CCC - FMS No./N° VME

---

#### **Part 4 : Delivery location**

- 5.1** Delivered Duty Paid (DDP): NGCC Des Groseilliers, Pêches et Océans Canada – Garde Côtière, 101 boulevard Champlain, Québec (QC) G1K 7Y7, Canada, Incoterms 2000 for shipments from a commercial contractor.



## ANNEX B – BASIS OF PAYMENT

**Items 1.1 to 1.9 must be compatible with a Leslie, Diaphragm control valve, Class (D) DOT, Cast Bronze 3" CODE: 22J4B2ALA, Drawing No. 10/8.4.3.**

**Items 2.1 to 2.8 must be compatible with a Leslie, Diaphragm control valve, Class (D) DOT, Cast Bronze 1" CODE: 22J4B20, Drawing No. 10/8.4.2.**

Item	Reference #	Description and Part #	Material	Material Spec	Max air control PSI	Cooling Fluid	Max Sea water PSI	Qty	Unit price	Total price
1.1	63892	Packing Flange (item #30 Identique pour valve 1")	Brass	ASTM B-16	60	Eau de mer	150	4	_____ \$	_____ \$
1.2	63925	Packing Follower (item #31)	Brass	ASTM B-16	60	Eau de mer	150	2	_____ \$	_____ \$
1.3	64004	packing set teflon (item #32)	Teflon	Commercial	60	Eau de mer	150	4	_____ \$	_____ \$
1.4	64003	O-ring (item # 34 et 39)	Synthetic Rubber	Buna N	60	Eau de mer	150	4	_____ \$	_____ \$
1.5	63926	Packing washer (item #35)	Monel	ASTM B-164	60	Eau de mer	150	2	_____ \$	_____ \$
1.6	63930	Packing spring (item #36)	Monel	Commercial	60	Eau de mer	150	1	_____ \$	_____ \$
1.7	63968	Valve plug (item #38)	Synthetic Rubber	Buna N	60	Eau de mer	150	2	_____ \$	_____ \$
1.8	63971	Cage (item #40)	Cast Bronze	ASTM B-61	60	Eau de mer	150	1	_____ \$	_____ \$
1.9	63964	Load Ring (item #42)	Monel	ASTM B-127	60	Eau de mer	150	1	_____ \$	_____ \$
2.1	63891	Packing Follower (item #31)	Brass	ASTM B-16	60	Eau de mer	150	2	_____ \$	_____ \$
2.2	63900	packing set teflon (item #32)	Teflon	Commercial	60	Eau de mer	150	2	_____ \$	_____ \$
2.3	63899	O-ring (item # 34)	Synthetic Rubber	Buna	60	Eau de mer	150	2	_____ \$	_____ \$

Solicitation No. - N° de l'invitation  
F3017-16N481/A  
Client Ref. No. - N° de réf. du client  
F3017-16N481

Amd. No. - N° de la modif.  
File No. - N° du dossier  
QCW-6-39035

Buyer ID - Id de l'acheteur  
QCW029  
CCC No./N° CCC - FMS No./N° VME

Item	Reference #	Description and Part #	Material	Material Spec	Max air control PSI	Cooling Fluid	Max Sea water PSI	Qty	Unit price	Total price
2.4	63895	Packing washer (item #35)	Monel	ASTM B-164	60	Eau de mer	150	2	_____ \$	_____ \$
2.5	63896	Packing spring (item #36)	Monel	Commercial	60	Eau de mer	150	1	_____ \$	_____ \$
2.6	64045	Valve plug (item #38)	Monel	ASTM B-127	60	Eau de mer	150	2	_____ \$	_____ \$
2.7	64049	Cage (item #40)	Cast Bronze	ASTM B-61	60	Eau de mer	150	1	_____ \$	_____ \$
2.8	64048	Load Ring (item #42)	Monel	ASTM B-127	60	Eau de mer	150	1	_____ \$	_____ \$
	Delivery: Delivered Duty Paid (DDP) NGCC Des Groseilliers, Pêches et Océans Canada – Garde côtière, 101 boulevard Champlain, Québec (QC) G1K 7Y7, Canada, Incoterms 2000, including all custom duties, handling and transportation.							1	_____ \$	_____ \$
*PROPOSAL EVALUATION COST – TOTAL (EXCLUDING APPLICABLE TAXES)										_____ \$
* Firm prices, all inclusive, DDP destination. Prices include Canadian customs duties and Applicable Taxes extra.										

---

**ANNEX C – EQUIVALENT PRODUCTS BRANDS AND MODELS**

**If equivalent products are submitted, bidders must provide the brands, the models and the serial numbers of the proposed products.**

ITEM	MARQUE	MODÈLE	NUMÉRO DE SÉRIE
1.1			
1.2			
1.3			
1.4			
1.5			
1.6			
1.7			
1.8			
1.9			
2.1			
2.2			
2.3			
2.4			
2.5			
2.6			
2.7			
2.8			

Solicitation No. - N° de l'invitation  
F3017-16N481/A  
Client Ref. No. - N° de réf. du client  
F3017-16N481

Amd. No. - N° de la modif.  
File No. - N° du dossier  
QCW-6-39035

Buyer ID - Id de l'acheteur  
QCW029  
CCC No./N° CCC - FMS No./N° VME

---

## **ANNEX D - Drawings**

« Leslie, Diaphragm control valve, Drawing No. 10/8.4.3 »  
« Leslie, Diaphragm control valve, Drawing No. 10/8.4.2 »

SEE ATTACHMENT

## Page 1 de 4



# ANNEXE D - DESSINS / ANNEX D - DRAWINGS

WHEN ORDERING PARTS, GIVE SIZE, CLASS, PART NAME AND PART REFERENCE NUMBER FROM TABLE BELOW. USE PART NUMBER ONLY TO LOCATE PART ON DRAWING.									
DIAPHRAGM ACTUATOR PARTS									
PART NO.	PART NAME	MATERIAL	MATERIAL SPEC.	QTY. PER UNIT	55A	55	55AR	55R	55R
1	Diaphragm Case, Upper	Pressed Steel	Commercial	1	37795	37791	37795	37795	37795
2	Ret	Steel	Commercial	1	-	-	37833	37833	37833
3	Diaphragm Disc (Note 7)	Pressed Steel	Commercial	1	-	-	37833	37833	37833
4	Diaphragm Disc (Note 8)	Cast Iron	ASTM A-128, Cl. B	1	37839	37844	37839	37839	37839
5	Ret	Steel	ASTM A-128, Cl. B	1	37839	37844	37839	37839	37839
6	Diaphragm Case, Lower	Pressed Steel	Commercial	1	37797	37797	37797	37797	37797
7	Diaphragm Case, Lower	Synthetic Rubber	(Note 2)	1	37810	37819	37810	37810	37810
8	Collar	Steel	(Note 3)	1	37812	37819	37812	37812	37812
9	Cap Screw	Steel	(Note 4)	1	37796	37796	37796	37796	37796
10	Gasket, Diaphragm Case	Synthetic Rubber	Neoprene	1	-	-	37751	37751	37751
11	Stem Seal	Stainless Steel	ASTM A-128, Cl. B	1	-	-	37802	37802	37802
12	Screw	Synthetic Rubber	ASTM A-128, Cl. B	1	-	-	37802	37802	37802
13	Stem Seal	Stainless Steel	ASTM A-128, Cl. B	1	-	-	37802	37802	37802
14	Top Spring Seat	Steel	(Note 5)	1	-	-	37802	37802	37802
15	Stem Seal Collar	Cast Iron	ASTM A-128, Cl. B	1	-	-	37802	37802	37802
16	Yoke (Note 6 & 7)	Cast Iron	ASTM A-128, Cl. B	1	-	-	37802	37802	37802
17	Upper Stem	Stainless Steel	ASTM A-128, Cl. B	1	-	-	37802	37802	37802
18	Actuator Spring	Steel	(Note 9)	1	-	-	37802	37802	37802
19	Washer	Stainless Steel	ASTM A-128, Cl. B	1	-	-	37802	37802	37802
20	Spring Adjuster (Note 7)	Cast Iron	ASTM A-128, Cl. B	1	-	-	37802	37802	37802
21	Spring Indicator (Note 8)	Cast Iron	ASTM A-128, Cl. B	1	-	-	37802	37802	37802
22	Travel Indicator Scale	Aluminum	ASTM B-211	1	-	-	37802	37802	37802
23	Screw	Steel, Plated	ASTM A-128, Cl. B	1	-	-	37802	37802	37802
24	Adjusting Sleeve	Stainless Steel	ASTM A-128, Cl. B	1	-	-	37802	37802	37802

10/B.4.3

Note 1 - Quantities are: Fourteen (14) for the 55A & 55AR and Sixteen (16) for the 55 & 55R Actuators.

Note 2 - Material Spec. is Fairprene for the 55A & 55AR and Buna N for the 55 & 55R Actuators.

Note 3 - Material and Material Spec. is Steel, AISI 1018 for the 55AR Iron & Aluminum Actuators and Aluminum, Alloy Alum. 6061-T6 for the 55R Iron & Aluminum Actuators.

Note 4 - Quantity is Eight (8) for the 55A & 55AR and Six (6) for the 55 & 55R Actuators.

Note 5 - Material and Material Spec. is Steel, Commercial for the 55AR and Cast Iron, ASTM A-128, Cl. B for the 55R Actuators.

Note 6 - Yoke, Part No. 16, is furnished complete with Adjusting Sleeve, Part No. 25.

Note 7 - Used on Cast Iron Actuators only.

Note 8 - Used on Cast Aluminum Actuators only.

Note 9 - Material Spec. is AISI 5160 for the 55A & 55AR and AISI 1095 for the 55 & 55R Actuators.

Note 10 - Used for Cast Iron Valves only.

Note 11 - Used for Cast Bronze Valves only.

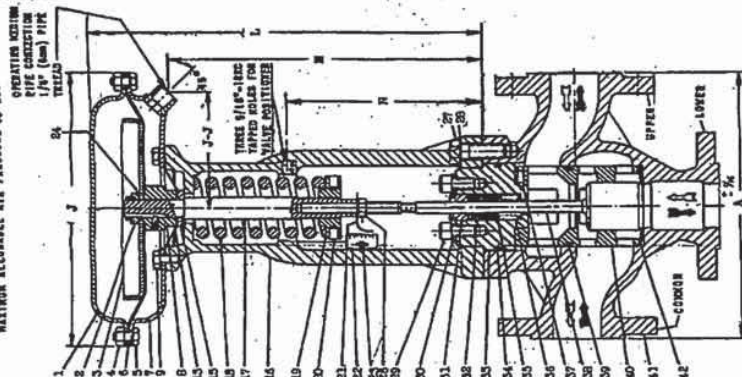
PART NO. 22			
TRAVEL INDICATOR SCALE			
VALVE TRAVEL	55A & 55AR	55 & 55R	
9/16 in. 14.3mm	63983	63982	
11/16 in. 17.5mm	63983	63983	

VALVE BODY PARTS									
PART NO.	PART NAME	MATERIAL	MATERIAL SPEC.	QTY. PER UNIT	55A	55	55AR	55R	55R
26	Nut	Steel	Commercial	1	26593	26593	26593	26593	26593
27	Boat	Steel	ASTM A-193, Gr. B7	4	47346	47346	47346	47346	47346
28	Cap Screw	Stainless Steel	Commercial	6	64005	64005	64005	64005	64005
29	Packing Flange	Brass	ASTM B-16	1	64005	64005	64005	64005	64005
30	Packing Follower	Brass	ASTM B-16	1	64005	64005	64005	64005	64005
31	Packing Bot. Complete	Teflon	Commercial	1	64005	64005	64005	64005	64005
32	Boonet	Cast Iron	ASTM A-128, Cl. B	1	63915	63915	63915	63915	63915
33	Boonet	Cast Iron	ASTM A-128, Cl. B	1	63914	63914	63914	63914	63914
34	O-Ring	Synthetic Rubber	Buna N	1	64002	64002	64002	64002	64002
35	Packing Washer	Monel	ASTM B-14	1	63998	63998	63998	63998	63998
36	Packing Spring	Monel	Commercial	2	63998	63998	63998	63998	63998
37	Set Screw	Monel	Commercial	1	63998	63998	63998	63998	63998
38	Valve Plug	Stainless Steel	AISI Type 316	1	63920	63920	63920	63920	63920
39	Valve Plug	Monel	ASTM B-127	1	64002	64002	64002	64002	64002
40	O-Ring	Synthetic Rubber	Buna N	1	64002	64002	64002	64002	64002
41	Valve Body, 120° Flg.	Cast Iron	ASTM A-128, Cl. B	1	63901	63901	63901	63901	63901
42	Valve Body, 120° Flg.	Cast Iron	ASTM A-128, Cl. B	1	63908	63908	63908	63908	63908
43	Valve Body, 120° Flg.	Cast Iron	ASTM A-128, Cl. B	1	63908	63908	63908	63908	63908
44	Valve Body, 120° Flg.	Cast Iron	ASTM A-128, Cl. B	1	63904	63904	63904	63904	63904
45	Load Ring	Stainless Steel	Commercial	1	63927	63927	63927	63927	63927
46	Load Ring	Monel	ASTM B-127	1	63924	63924	63924	63924	63924

\* RECOMMENDED SPARE PARTS.  
\* THESE PARTS SHOULD BE ON HAND, PLUS RECOMMENDED SPARE PARTS, WHEN OVERHAULING THIS EQUIPMENT.

[illegible]

MAXIMUM ALLOWABLE AIR PRESSURE 60 LB.



VIEW SHOWING 1" TO 2" CLASS DETAIL WITH SIZE 30R ACTUATOR

**ALIVE MAY BE USED FOR CONVEYING  
231A783 SIGNIFICANT & COVERING SERVICE**

CONVERGING  
DIVERGING

—

SEE REVERSE SLIDE FOR PART NAME  
AND PART REFERENCE NUMBER

**LESLIE CO.**  
PARKWAY NEW JERSEY 07094

DIAPHRAGM CONTROL VALVE  
BRASS (D) LOT - CAST BRONZE  
1-20 2" 150 LB. FLANGED

FILE	APP'D.	S-M-R	CYC.
-78	ES	MQ	NO.

10/8.4.3

Printed in U.S.A.



# ANNEXE D - DESSINS / ANNEX D - DRAWINGS

WHEN ORDERING PARTS, GIVE SIZE, CLASS, PART NAME AND PART REFERENCE NUMBER FROM TABLE BELOW USE PART NUMBERS ONLY TO LOCATE PART ON DRAWING.									
DIAPHRAGM ACTUATOR PARTS									
PART NO.	PART NAME	MATERIAL	QTY. PER UNIT	REF. NO.	QTY. PER UNIT	REF. NO.	QTY. PER UNIT	REF. NO.	QTY. PER UNIT
1	Diaphragm Case, Upper	Commercial Steel	1	35349	37795	35352	37795	35352	37795
2	Nut	Steel	1	35350	37795	35352	37795	35352	37795
3	Diaphragm Disc (Note 6)	Commercial Steel	1	35351	37795	35352	37795	35352	37795
4	Diaphragm Disc (Note 7)	Commercial Steel	1	35351	37795	35352	37795	35352	37795
5	Bolt	Steel	1	35351	37795	35352	37795	35352	37795
6	Diaphragm Case, Lower	Commercial Steel	1	35351	37795	35352	37795	35352	37795
7	Collar	Steel	1	35351	37795	35352	37795	35352	37795
8	Cap Screw	Steel	1	35351	37795	35352	37795	35352	37795
9	Gasket	Synthetic Rubber	1	35351	37795	35352	37795	35352	37795
10	Stem Seal Ring (Note 9)	Steel	1	35351	37795	35352	37795	35352	37795
11	Stem Seal (Note 9)	Steel	1	35351	37795	35352	37795	35352	37795
12	Stem Seal	Synthetic Rubber	1	35351	37795	35352	37795	35352	37795
13	Stem Seal	Steel	1	35351	37795	35352	37795	35352	37795
14	Top Spring Seat (Note 9)	Cold Rolled Steel	1	35351	37795	35352	37795	35352	37795
15	Stem Seal Collar (Note 5 & 6)	Cast Iron	1	35351	37795	35352	37795	35352	37795
16	Yoke (Note 5 & 7)	Cast Aluminum	1	35351	37795	35352	37795	35352	37795
17	Upper Stem	Stainless Steel	1	35351	37795	35352	37795	35352	37795
18	Actuator Spring	Steel	1	35351	37795	35352	37795	35352	37795
19	Washer	Stainless Steel	1	35351	37795	35352	37795	35352	37795
20	Spring Adjustor (6)	Cast Iron	1	35351	37795	35352	37795	35352	37795
21	Spring Adjustor (7)	Cast Bronze	1	35351	37795	35352	37795	35352	37795
22	Travel Indicator	Stainless Steel	1	35351	37795	35352	37795	35352	37795
23	Travel Indicator Scale	Aluminum	1	35351	37795	35352	37795	35352	37795
24	Washer	Steel, Plated	1	35351	37795	35352	37795	35352	37795
25	Adjusting Sleeve	Stainless Steel	1	35351	37795	35352	37795	35352	37795

VALVE BODY PARTS									
PART NO.	PART NAME	MATERIAL	QTY. PER UNIT	REF. NO.	QTY. PER UNIT	REF. NO.	QTY. PER UNIT	REF. NO.	QTY. PER UNIT
26	Nut	Steel	1	35351	37795	35352	37795	35352	37795
27	Bolt	Steel	1	35351	37795	35352	37795	35352	37795
28	Caution Plate	Brass	1	35351	37795	35352	37795	35352	37795
29	Packing Flange	Stainless Steel	1	35351	37795	35352	37795	35352	37795
30	Cap Screw	Brass	1	35351	37795	35352	37795	35352	37795
31	Packing Follower	Brass	1	35351	37795	35352	37795	35352	37795
32	Packing Set, Complete	Teflon	1	35351	37795	35352	37795	35352	37795
33	Bonnet	Cast Bronze	1	35351	37795	35352	37795	35352	37795
34	O-Ring	Synthetic Rubber	1	35351	37795	35352	37795	35352	37795
35	Packing Washer	Monel	1	35351	37795	35352	37795	35352	37795
36	Packing Spring	Monel	1	35351	37795	35352	37795	35352	37795
37	Set Screw	Monel	1	35351	37795	35352	37795	35352	37795
38	Valve Plug	Monel	1	35351	37795	35352	37795	35352	37795
39	O-Ring	Synthetic Rubber	1	35351	37795	35352	37795	35352	37795
40	Valve Body, 150# Flg.	Cast Bronze	1	35351	37795	35352	37795	35352	37795
41	Valve Body, 90# Flg.	Cast Bronze	1	35351	37795	35352	37795	35352	37795
42	Valve Body, 150# Flg.	Cast Bronze	1	35351	37795	35352	37795	35352	37795
43	Load Ring	Monel	1	35351	37795	35352	37795	35352	37795

10/8.4.2

- Note 1 - Quantities are: Twelve (12) for the 35 & 35R and Fourteen (14) for the 55 & 55R Actuators.
- Note 2 - Material Spec. is Fairprene for the 35 & 35R and Buna N for the 55 & 55R Actuators.
- Note 3 - Material and Material Spec. is Steel, AISI 1018CF for the 35R Iron and Aluminum Actuators and Alloy Aluminum 6061-T6 for the 55R Iron and Aluminum Actuators.
- Note 4 - Quantity is One (1) for the 35 & 35R and Two (2) for the 55 & 55R Actuators.
- Note 5 - Yoke, Part No. 16, is furnished complete with Adjusting Sleeve, Part No. 23.
- Note 6 - Used on Cast Iron Actuators only.
- Note 7 - Used on Cast Aluminum Actuators only.
- Note 8 - Ref. No. 47346 is used for the Alternate Actuators.
- Note 9 - Note 9 - Not Shown on drawing.

PART NO. 22	
TRAVEL INDICATOR SCALE	
1/4 in. 6.4mm	65999
3/8 in. 9.5mm	66000
1/2 in. 12.7mm	66001
3/4 in. 19.0mm	66002

\* THESE PARTS SHOULD BE ON HAND, PLUS RECOMMENDED SPARE PARTS, WHEN OVERHAULING THIS EQUIPMENT.