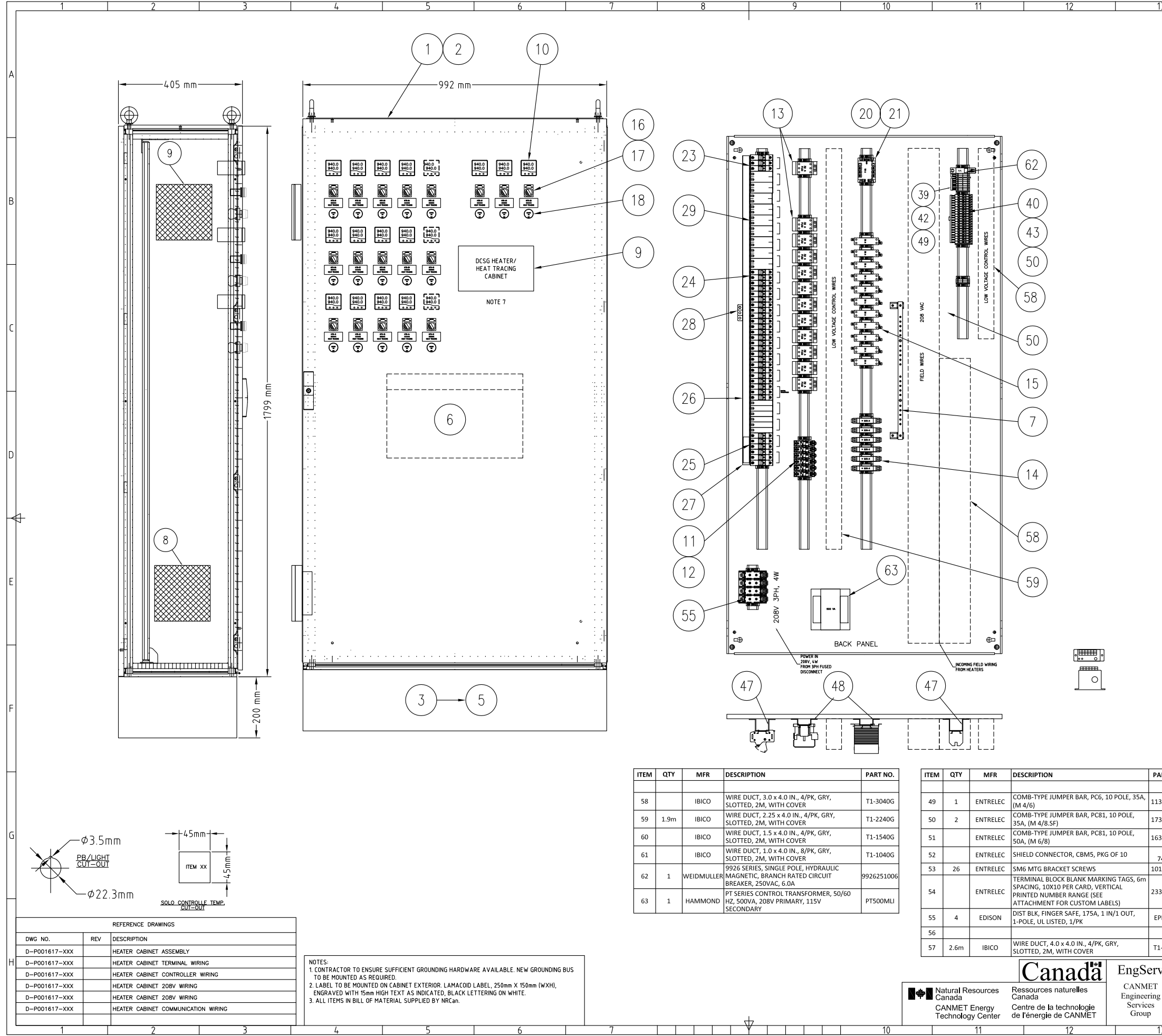


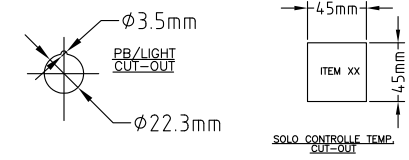
RevNo	Revision note	Date	Signature	Checked
X	XXXX	XXX	XX	



ITEM	QTY	MFR	DESCRIPTION	PART NO.
1	1	RITTAL	ENCLOSURE, 997mm X 1805mm X 405mm (W X H X D), SINGLE DOOR C/W REAR DETACHABLE PANEL, MOUNT PLATE	8084.500
2	1	RITTAL	TS SIDE PANELS, 1800 X 400mm, PACKAGE OF 2	8184.235
3	1	RITTAL	FLEX-BLOCK CORNER PIECES BASE/PLINTH SYSTEM, FIBREGLASS-REINFORCED PLASTIC	8200.000
4	1	RITTAL	FLEX-BLOCK TRIM PANELS, FOR 1000mm X 200mm (D X H), SOLID	8200.010
5	1	RITTAL	FLEX-BLOCK TRIM PANELS, FOR 400mm X 200mm (D X H), SOLID	8200.400
6	1	RITTAL	"SHEET STEEL WIRING PLAN POCKETS, 855mm X 210mm (W X H), 90mm DEEP"	4124.000
7	2	RITTAL	GROUND BUS, COPPER, 20 GROUNDING CLIPS, 2 ISOLATORS	7113.000
8				
9	1	BY SHOP	LAMACOID LABEL, 250mm X 150mm (W X H), ENGRAVED WITH 15mm HIGH TEXT AS INDICATED, BLACK LETTERING ON WHITE	
10	18	AUTOMATION DIRECT	SOLO TEMPERATURE CONTROLLER, 1/16 DIN, OUT1-PULSE, OUT2-SPST, 100-240VAC	SL4848-VR
11	6	AUTOMATION DIRECT	78 SERIES RELAY, SPDT, 15A, 120 VAC COIL	781-1C-120A
12	6	AUTOMATION DIRECT	AUTOMATION DIRECT, 78 SERIES RELAY SOCKET	781-1C-5KT
13	12	FUJII	FUJII, DUO SERIES SC-E CONTACTOR, 3 POLE, 110 VAC COIL, 32A RESISTIVE	SC-E05-110VAC
14	6	AUTOMATION DIRECT	SOLID ST RELAY 10A SPST VDC INPUT N.O., 24-280 VAC ZERO CROSS DIN MOUNT	AD-SSR810-DC-282
15	11	AUTOMATION DIRECT	SOLID ST RELAY 30A SPST VDC INPUT N.O., 24-280 VAC DIN MOUNT	AD-SSR230-22-DC2
16	18	EATON	22MM TWO-POSITION SELECTOR SWITCH, (1) NO CONTACT	GCX1300
17	18	EATON	LEGEND PLATE "OFF-ON"	E22NS42
18	18	EATON	22MM INDICATOR LIGHT "GREEN" LED, 120VDC/VAC	ECX2052-127L
19				
20	1	CARLO GAVAZZI	3 PHASE SOLID STATE RELAY, 25A, 4-32VDC CONTROL, 600V	RZ3A60D25
21	1	CARLO GAVAZZI	HEATSINK WITH DIN RAIL ADAPTER ASSEMBLY FOR 3-PHASE SSRs	RHS300
22				
23	1	BUSSMANN	CH SERIES MODULAR FUSE HOLDER, CHM 10X38 AND MIDGET, 600V/30A, 3-POLE, 18-4 AWG	CHM3DU
24	13	BUSSMANN	CH SERIES MODULAR FUSE HOLDER, CHM 10X38 AND MIDGET, 600V/30A, 2-POLE, 18-4 AWG	CHM2DU
25	6	BUSSMANN	CH SERIES MODULAR FUSE HOLDER, CHM 10X38 AND MIDGET, 600V/30A, 1-POLE, 18-4 AWG	CHM1DU
26	1	BUSSMANN	COM-BUS BAR, 3PH, 600V CUTTABLE 100A, 57 PINS, WITHOUT ENDCAP (19) 3PH HOLDERS	883P100M57
27	2	BUSSMANN	3 PHASE BUSBAR ENDCAP	ECAPMP
28	3	BUSSMANN	35sq-mm, FEEDER TERMINAL FOR 3PH BUSBAR (115A, 1000VAC/DC)	PWR35MM
29	18	BUSSMANN	SPARE CONTACT SAFETY PROTECTION COVER	FSCVR
30				
31	X	BUSSMANN	13/32" X 1-1/2" 600VAC FAST-ACTING SUPPLEMENTAL FUSES, 5A	KLM-5
32	X	BUSSMANN	13/32" X 1-1/2" 600VAC FAST-ACTING SUPPLEMENTAL FUSES, 10A	KLM-10
33	X	BUSSMANN	13/32" X 1-1/2" 600VAC FAST-ACTING SUPPLEMENTAL FUSES, 12A	KLM-12
34	X	BUSSMANN	13/32" X 1-1/2" 600VAC FAST-ACTING SUPPLEMENTAL FUSES, 15A	KLM-15
35	X	BUSSMANN	13/32" X 1-1/2" 600VAC FAST-ACTING SUPPLEMENTAL FUSES, 20A	KLM-20
36	X	BUSSMANN	13/32" X 1-1/2" 600VAC FAST-ACTING SUPPLEMENTAL FUSES, 25A	KLM-25
37	X	BUSSMANN	13/32" X 1-1/2" 600VAC FAST-ACTING SUPPLEMENTAL FUSES, 30A	KLM-30
38				
39	12	ENTRELEC	STANDARD TERMINAL BLOCK, M 4/6, WITH TEST 2mm TEST SOCKET	115 217.14
40	20	ENTRELEC	FUSED TERMINAL BLOCKM4/8.5F	115 657.25
41		ENTRELEC	TERMINAL BLOCKS, M 6/8	115 118.11
42	1	ENTRELEC	END SECTION, M4/6	118 368.16
43	1	ENTRELEC	END SECTION, M4/8.5F	116 951.15
44	46	ENTRELEC	END STOP (ALL RAILS)	206 351.16
45		ENTRELEC	SEPARATOR END SECTION, RAIL MOUNT, SCF6	118 707.03
46	4.8m	ENTRELEC	ASSEMBLY RAIL, PR30 (TS 35/F6), DIN 3, 35mm, 2 meter	173 220.05
47	5	ENTRELEC	RAIL OFFSET MTG BRACKET, TS0441-SM6 40mm HIGH	101 655.06
48	8	ENTRELEC	RAIL OFFSET MTG BRACKET, TS0441-SM6 20mm HIGH	101 653.04
49	1	ENTRELEC	COMB-TYPE JUMPER BAR, PC6, 10 POLE, 35A, (M 4/6)	113 548.26
50	2	ENTRELEC	COMB-TYPE JUMPER BAR, PC81, 10 POLE, 35A, (M 4/8.5F)	173 523.11
51		ENTRELEC	COMB-TYPE JUMPER BAR, PC81, 10 POLE, 50A, (M 6/8)	163 313.24
52		ENTRELEC	SHIELD CONNECTOR, CBMS, PKG OF 10	178 745.14
53	26	ENTRELEC	SM6 MTG BRACKET SCREWS	101 659.12
54		ENTRELEC	TERMINAL BLOCK BLANK MARKING TAGS, 6m SPACING, 10X10 PER CARD, VERTICAL PRINTED NUMBER RANGE (SEE ATTACHMENT FOR CUSTOM LABELS)	233 000.01
55	4	EDISON	DIST BLK, FINGER SAFE, 175A, 1 IN/1 OUT, 1-POLE, UL LISTED, 1/PK	EPDB101
56				
57	2.6m	IBICO	WIRE DUCT, 4.0 x 4.0 IN., 4/PK, GRY, SLOTTED, 2M, WITH COVER	T1-4040G

ITEM	QTY	MFR	DESCRIPTION	PART NO.
58		IBICO	WIRE DUCT, 3.0 x 4.0 IN., 4/PK, GRY, SLOTTED, 2M, WITH COVER	T1-3040G
59	1.9m	IBICO	WIRE DUCT, 2.25 x 4.0 IN., 4/PK, GRY, SLOTTED, 2M, WITH COVER	T1-2240G
60		IBICO	WIRE DUCT, 1.5 x 4.0 IN., 4/PK, GRY, SLOTTED, 2M, WITH COVER	T1-1540G
61		IBICO	WIRE DUCT, 1.0 x 4.0 IN., 8/PK, GRY, SLOTTED, 2M, WITH COVER	T1-1040G
62	1	WEIDMULLER	9926 SERIES, SINGLE POLE, HYDRAULIC MAGNETIC, BRANCH RATED CIRCUIT BREAKER, 250VAC, 6.0A	9926251006
63	1	HAMMOND	PT SERIES CONTROL TRANSFORMER, 50/60 HZ, 500VA, 208V PRIMARY, 115V SECONDARY	PT500MLI

ITEM	QTY	MFR	DESCRIPTION	PART NO.
49	1	ENTRELEC	COMB-TYPE JUMPER BAR, PC6, 10 POLE, 35A, (M 4/6)	113 548.26
50	2	ENTRELEC	COMB-TYPE JUMPER BAR, PC81, 10 POLE, 35A, (M 4/8.5F)	173 523.11
51		ENTRELEC	COMB-TYPE JUMPER BAR, PC81, 10 POLE, 50A, (M 6/8)	163 313.24
52		ENTRELEC	SHIELD CONNECTOR, CBMS, PKG OF 10	178 745.14
53	26	ENTRELEC	SM6 MTG BRACKET SCREWS	101 659.12
54		ENTRELEC	TERMINAL BLOCK BLANK MARKING TAGS, 6m SPACING, 10X10 PER CARD, VERTICAL PRINTED NUMBER RANGE (SEE ATTACHMENT FOR CUSTOM LABELS)	233 000.01
55	4	EDISON	DIST BLK, FINGER SAFE, 175A, 1 IN/1 OUT, 1-POLE, UL LISTED, 1/PK	EPDB101
56				
57	2.6m	IBICO	WIRE DUCT, 4.0 x 4.0 IN., 4/PK, GRY, SLOTTED, 2M, WITH COVER	T1-4040G



DWG NO.	REV	DESCRIPTION
D-P001617-XXX		HEATER CABINET ASSEMBLY
D-P001617-XXX		HEATER CABINET TERMINAL WIRING
D-P001617-XXX		HEATER CABINET CONTROLLER WIRING
D-P001617-XXX		HEATER CABINET 208V WIRING
D-P001617-XXX		HEATER CABINET 208V WIRING
D-P001617-XXX		HEATER CABINET COMMUNICATION WIRING

NOTES:
 1. CONTRACTOR TO ENSURE SUFFICIENT GROUNDING HARDWARE AVAILABLE. NEW GROUNDING BUS TO BE MOUNTED AS REQUIRED.
 2. LABEL TO BE MOUNTED ON CABINET EXTERIOR. LAMACOID LABEL, 250mm X 150mm (W X H), ENGRAVED WITH 15mm HIGH TEXT AS INDICATED, BLACK LETTERING ON WHITE.
 3. ALL ITEMS IN BILL OF MATERIAL SUPPLIED BY NRCAN.

Natural Resources Canada
CANMET Energy Technology Center

Ressources naturelles Canada
Centre de la technologie de l'énergie de CANMET

EngServ
CANMET Engineering Services Group

Itemref	Quantity	Title/Name, designation, material, dimension etc	Article No./Reference
Designed by S. BETHUNE	Checked by S. BETHUNE	Approved by - date	Filename P001617-100 Date FEB 19, 2016 Scale NONE

NRCAN-CFF, DCSG

HEATER & HEAT TRACING CABINET

D-P01617-XXX Edition 0 Sheet 1/1