



**RETURN BIDS TO:
RETOURNER LES SOUMISSIONS A:
Bid Receiving/Réception des
sousmissions**

RCMP / GRC
Procurement & Contracting Services
c/o Commissionaires, D Division
1091 Portage Avenue
Winnipeg, MB R3C 3K2

Facsimile Number for Amendments:
(204) 984-4253

**INVITATION TO TENDER
APPEL D'OFFRES**

Tender to: Royal Canadian Mounted Police
We hereby offer to sell to Her Majesty the Queen in right of Canada, in accordance with the terms and conditions set out herein, referred to herein or attached hereto, the goods, services and construction listed herein and on any attached sheets at the price(s) set out therefore.

Soumission aux: Gendarmerie royale du Canada
Nous offrons par la présente de vendre à Sa Majesté I Reine du chef du Canada, aux conditions énoncées ou incluses par référence dans la présente et aux annexes ci-jointes, les biens, services et construction énumérés ici sur toute feuille ci-annexée, au(x) prix indiqué(s).

Comments - Commentaries

Vendor/Firm Name and Address
Raison sociale et adresse du fournisseur/de l'entrepreneur

Facsimile No. - No de télécopieur:

Telephone No. - no de téléphone:

Title-Sujet: Parking Lot/Civic Grade Improvements in Steinbach, MB	
Solicitation No. - No. de l'invitation M5000-17-0420/A	Date 15 July 2016
Client Reference No. - No. De Référence du Client M5000-17-0420/A	
GETS Reference No. - No. de Référence de SEAG PW-16-00740427	
Solicitation Closes –L'invitation prend fin at - à 2:00 p.m. Central Daylight Savings Time on - le 03 August 2016	
F.O.B. - F.A.B. Destination	
Address Enquiries to: - Adresser toutes questions à: Cathi Johannson, Senior Contracting Officer E-mail: cathi.johannson@rcmp-grc.gc.ca	
Telephone No. - No de téléphone (204) 984-1836	Fax No. - N° de FAX: (204) 984-4253
Destination of Goods, Services, and Construction: Destinations des biens, services et construction: Royal Canadian Mounted Police Steinbach Detachment N, 100 Provincial Trunk Highway 12 Steinbach, MB R5G 1Y1	
This document DOES contain a PERSONNEL SECURITY Clearance requirement	
Delivery Required - Livraison exigée: 31 October 2016	Delivery Offered - Livraison proposée
Name and title of person authorized to sign on behalf of Vendor/Firm Nom et titre de la personne autorisée à signer au nom du fournisseur/de l'entrepreneur	



INVITATION TO TENDER

IMPORTANT NOTICE TO BIDDERS

THIS DOCUMENT CONTAINS A SECURITY REQUIREMENT

CLAUSES REFERRED TO BY NUMBER (I.E. R2890D) CAN BE FOUND AT THE FOLLOWING WEB SITE

<https://buyandsell.gc.ca/policy-and-guidelines/standard-acquisition-clauses-and-conditions-manual> (to proceed with a search select "Search SACC" and insert clause reference number in ID box)

All references to the Department of Public Works & Government Services Canada (PWGSC) in the instructions, general terms, conditions and clauses identified in the Invitation to Tender (ITT) by number, date and title, are set out in the Standard Acquisition Clauses and Conditions Manual (<https://buyandsell.gc.ca/policy-and-guidelines/standard-acquisition-clauses-and-conditions-manual>) and are to be replaced with the Royal Canadian Mounted Police (RCMP).

BUY AND SELL

[Buyandsell.gc.ca/tenders](https://buyandsell.gc.ca/tenders) is the Government of Canada's Electronic Tendering Service Provider.

[Buyandsell.gc.ca/tenders](https://buyandsell.gc.ca/tenders) does not advise potential bidders of changes to any of the projects. It is the responsibility of potential bidders to ensure that they are frequenting the site, ensuring that they are in receipt of all amendments for projects.

Please include, as part of your bid package, copies of all amendments that have been duly signed/initialed verifying proof of receipt.

CONTRACT SECURITY

The required amount of a security deposit or a letter of credit is established at 20% of the contract amount with no maximum. See GC9.2 of R2890D – Contract Security. Please note that Security Deposits and Letters of Credit are no longer accepted in combination with Labour and Material Payment Bonds.

PROMOTION OF DIRECT DEPOSIT INITIATIVE

The following information is not related to the solicitation process:

An initiative within the Government of Canada called the Cheque Standardization Project has been established whereby eventually for all payments, cheque stubs will no longer be printed and, with few exceptions, will be processed via direct deposit. This option is only available when payment is made in Canadian dollars for deposit into a Canadian bank account. In an attempt to be proactive, RCMP Corporate Accounting is promoting the registration of RCMP suppliers for the upcoming change in the payment process.

If you are the successful bidder on this or any other RCMP requirement, you are encouraged to register with the RCMP for direct deposit. Please contact RCMP Corporate Accounting by email to receive a form entitled Recipient Electronic Payment Registration Request along with instructions for completion of the form.

Should you have any questions regarding the Cheque Standardization Project or if you want to register, please contact the following email: corporate_accounting@rcmp-grc.gc.ca



TABLE OF CONTENTS

SPECIAL INSTRUCTIONS TO BIDDERS (SI)

- SI01 Bid Documents
- SI02 Enquiries During the Solicitation Period
- SI03 Site Visit
- SI04 Revision of Bid
- SI05 Bid Results
- SI06 Insufficient Funding
- SI07 Bid Validity Period
- SI08 Construction Documents
- SI09 Security Clearance
- SI10 Certifications Precedent to Contract Award
- SI11 Web Sites

GENERAL INSTRUCTIONS – CONSTRUCTION SERVICES – BID SECURITY REQUIREMENTS (GI) - R2710T (2016-04-04)

The following GI's are included by reference and are available at the following Web Site:
<https://buyandsell.gc.ca/policy-and-guidelines/standard-acquisition-clauses-and-conditions-manual/5/R/R2710T/16> (to proceed with a "search" insert R2710T in the ID box)

- GI01 Integrity Provisions - Bid
- GI02 Completion of Bid
- GI03 Identity or Legal Capacity of the Bidder
- GI04 Applicable Taxes
- GI05 Capital Development and Redevelopment Charges
- GI06 Registry and Pre-qualification of Floating Plant
- GI07 Listing of Subcontractors and Suppliers
- GI08 Bid Security Requirements
- GI09 Submission of Bid
- GI10 Revision of Bid
- GI11 Rejection of Bid
- GI12 Bid Costs
- GI13 Procurement Business Number
- GI14 Compliance with Applicable Laws
- GI15 Approval of Alternative Materials
- GI16 Performance Evaluation
- GI17 Conflict of Interest - Unfair Advantage
- GI18 Code of Conduct for Procurement - bid

SUPPLEMENTARY CONDITIONS (SC)

- SC01 Security Requirements for Canadian Contractors
- SC02 Insurance Terms
- SC03 Submission of Bid
- SC04 Mandatory Health & Safety

CONTRACT DOCUMENTS (CD)

BID AND ACCEPTANCE FORM (BA)

- BA01 Identification
- BA02 Business Name and Address of Bidder
- BA03 The Offer
- BA04 Bid Validity Period
- BA05 Acceptance and Contract
- BA06 Construction Time
- BA07 Bid Security
- BA08 Signature



ANNEXES AND APPENDICES:

Annex A – Scope of Work

Annex B – Basis of Payment and Basis of Selection

Annex C – Drawings

Annex D – Security Requirement Checklist

APPENDIX 1 – RCMP CERTIFICATE ON INSURANCE/ATTESTATION D'ASSURANCE–GRC

APPENDIX 2 – Bid Submission Check List



SPECIAL INSTRUCTIONS TO BIDDERS (SI)

SI01 BID DOCUMENTS

1) The following are the bid documents:

- (a) Invitation to Tender - Page 1;
- (b) Special Instructions to Bidders;
- (c) General Instructions – Construction Services – Bid Security Requirements R2710T (2016-04-04);
- (d) Clauses & Conditions identified in “Contract Documents”;
- (e) Drawings and Specifications;
- (f) Bid and Acceptance Form and related Appendice(s); and
- (g) Any amendment issued prior to solicitation closing.

Submission of a bid constitutes acknowledgement that the Bidder has read and agrees to be bound by these documents.

2) General Instructions to Bidders are incorporated by reference and is set out in the Standard Acquisition Clauses and Conditions (SACC) Manual, issued by Public Works and Government Services Canada (PWGSC). The SACC Manual is available on the PWGSC Web site: <https://buyandsell.gc.ca/policy-and-guidelines/standard-acquisition-clauses-and-conditions-manual>

3) **Bids must be submitted only to RCMP Bid Receiving Unit by the date, time and place indicated on page 1 of the bid solicitation. The RCMP will not assume responsibility for bids directed to any other location.**

Due to the nature of the bid solicitation, Bids transmitted by facsimile or e-mail to the RCMP will not be accepted.

4) Canada requests that Bidders follow the format instructions described below in the preparation of their Bid:

- a) use 8.5 x 11 inch (216 mm x 279 mm) paper;
- b) use a numbering system that corresponds to the bid solicitation.

In April 2006, Canada issued a policy directing federal departments and agencies to take the necessary steps to incorporate environmental considerations into the procurement process [Policy on Green Procurement](http://www.tpsgc-pwgsc.gc.ca/ecologisation-greening/achats-procurement/politique-policy-eng.html) (<http://www.tpsgc-pwgsc.gc.ca/ecologisation-greening/achats-procurement/politique-policy-eng.html>). To assist Canada in reaching its objectives, Bidders should:

- use 8.5 x 11 inch (216 mm x 279 mm) paper containing fibre certified as originating from a sustainably-managed forest and containing minimum 30% recycled content; and
- use an environmentally-preferable format including black and white printing instead of colour printing, printing double sided/duplex, using staples or clips instead of cerlox, duotangs or binders.

SI02 ENQUIRIES DURING THE SOLICITATION PERIOD

1) Enquiries regarding this bid must be submitted in writing to the Contracting Officer named on the Invitation to Tender - Page 1 as early as possible within the solicitation period. Except for the approval of alternative materials as described in the ‘Approval of Alternative Materials’ section of R2710T “General Instructions – Construction Services – Bid Security Requirements”, enquiries should be received no later than five (5) calendar days prior to the date set for solicitation closing to allow sufficient time to provide a response. Enquiries received after that time may not result in an answer being provided.

2) To ensure consistency and quality of the information provided to Bidders, the Contracting Officer shall examine the content of the enquiry and shall decide whether or not to issue an amendment.



- 3) All enquiries and other communications related to this bid sent throughout the solicitation period are to be directed ONLY to the Contracting Officer named on the Invitation to Tender - Page 1. Failure to comply with this requirement may result in the bid being declared non-responsive.

SI03 SITE VISIT

It is recommended that the Bidder or a representative of the Bidder visit the work site(s). Arrangements have been made for the site visits to be held on: 22 July, 2016, at 10:30 a.m. Interested bidders are to meet at the RCMP Detachment in Steinbach, Manitoba.

Bidders may be requested to sign an attendance sheet. Bidders who do not attend or do not send a representative will not be given an alternative appointment but they will not be precluded from submitting a bid. Any clarifications or changes to the bid solicitation resulting from the site visit will be included as an amendment to the bid solicitation.

SI04 REVISION OF BID

A bid may be revised by letter or facsimile in accordance with the 'Revision of Bid' section of R2710T "General Instructions – Construction Services – Bid Security Requirements". The facsimile number for receipt of revisions is (204) 984-4253.

SI05 BID RESULTS

- 1) A public bid opening will be held in the office designated on the Front Page "Invitation to Tender" for the receipt of bids shortly after the time set for solicitation closing.
- 2) Following solicitation closing, bid results may be obtained by calling the bid receiving office at Telephone No. (204) 984-1836.

SI06 INSUFFICIENT FUNDING

In the event that the lowest compliant bid exceeds the amount of funding allocated for the Work, Canada in its sole discretion may

- a) cancel the solicitation; or
- b) obtain additional funding and award the Contract to the Bidder submitting the lowest compliant bid; and/or
- c) negotiate a reduction in the bid price and/or scope of work of not more than 15% with the Bidder submitting the lowest compliant bid. Should an agreement satisfactory to Canada not be reached, Canada shall exercise option (a) or (b).

SI07 BID VALIDITY PERIOD

- 1) Canada reserves the right to seek an extension to the bid validity period prescribed in BA04 of the Bid and Acceptance Form. Upon notification in writing from Canada, Bidders shall have the option to either accept or reject the proposed extension.
- 2) If the extension referred to in paragraph 1) of SI07 is accepted, in writing, by all those who submitted bids, then Canada shall continue immediately with the evaluation of the bids and its approvals processes.
- 3) If the extension referred to in paragraph 1) of SI07 is not accepted in writing by all those who submitted bids then Canada shall, at its sole discretion, either
- (a) continue to evaluate the bids of those who have accepted the proposed extension and seek the necessary approvals; or
- (b) cancel the invitation to tender.



- 4) The provisions expressed herein do not in any manner limit Canada's rights in law or under the 'Rejection of Bid' section of R2710T "General Instructions – Construction Services – Bid Security Requirements".

SI08 CONSTRUCTION DOCUMENTS

The successful contractor will be provided with one paper copy of the sealed and signed drawings, the specifications and the amendments upon acceptance of the offer. Additional copies, up to a maximum of one (1), will be provided free of charge upon request by the contractor. Obtaining more copies shall be the responsibility of the contractor including costs.

SI09 SECURITY CLEARANCE

This document contains a mandatory security requirement for the performance of the subsequent contract (refer to clause SC01 of the Supplementary Conditions included herein).

- 1) The Successful Bidder's personnel, as well as any subcontractor and its personnel, who are required to perform any part of the work pursuant to the subsequent contract must meet the mandatory security requirement as indicated in section SC01 of the Supplementary Conditions. **Individuals who do not have the required level of security will not be allowed on site.** It is the responsibility of the successful bidder to ensure that the security requirements are met throughout the performance of the contract. Canada will not be held liable or accountable for any delays or additional costs associated with the successful bidder's non-compliance with the mandatory security requirement.
- 2) For any enquiries concerning the project security requirement, during the bidding period, the Bidder must follow the instructions as detailed in SI02 "Enquiries during the Solicitation Period".

SI10 CERTIFICATIONS PRECEDENT TO CONTRACT AWARD AND ADDITIONAL INFORMATION

The certifications and additional information listed below should be submitted with the bid but may be submitted afterwards. If any of these required certifications or additional information is not completed and submitted as requested, the Contracting Authority will inform the Bidder of a time frame within which to provide the information. Failure to provide the certifications or the additional information listed below within the time frame specified will render the bid non-responsive.

1) INTEGRITY PROVISIONS

In accordance with the Ineligibility and Suspension Policy (<http://www.tpsgc-pwgsc.gc.ca/ci-if/politique-policy-eng.html>), the Bidder must provide the required documentation, as applicable, to be given further consideration in the procurement process:

- Declaration of Convicted Offences (as applicable)
- Required Documentation

SI11 WEB SITES

The connection to some of the Web sites in the solicitation documents is established by the use of hyperlinks. The following is a list of the addresses of the Web sites:

Treasury Board Appendix L, Acceptable Bonding Companies
<http://www.tbs-sct.gc.ca/pol/doc-eng.aspx?id=14494§ion=text#appl>

Contracts Canada (Buy and Sell)
<https://buyandsell.gc.ca/for-businesses>

Canadian economic sanctions
<http://www.international.gc.ca/sanctions/index.aspx?lang=eng>

Contractor Performance Evaluation Report (Form PWGSC-TPSGC 2913)



<http://www.tpsgc-pwgsc.gc.ca/app-acq/forms/documents/2913.pdf>

Bid Bond (form PWGSC-TPSGC 504)

<http://www.tpsgc-pwgsc.gc.ca/app-acq/forms/documents/504.pdf>

Performance Bond (form PWGSC-TPSGC 505)

<http://www.tpsgc-pwgsc.gc.ca/app-acq/forms/documents/505.pdf>

Labor and Material Payment Bond (form PWGWSC-TPSGC 506)

<http://www.tpsgc-pwgsc.gc.ca/app-acq/forms/documents/506.pdf>

SACC Manual

<https://buyandsell.gc.ca/policy-and-guidelines/standard-acquisition-clauses-and-conditions-manual/all>

Schedules of Wage Rates for Federal Construction Contracts

http://www.rhdcc-hrsdc.gc.ca/eng/labour/employment_standards/contracts/schedule/index.shtml

PWGSC, Industrial Security Services

<http://ssi-iss.tpsgc-pwgsc.gc.ca/index-eng.html>



SUPPLEMENTARY CONDITIONS (SC)

SC01 SECURITY REQUIREMENT FOR CANADIAN CONTRACTORS

1. All persons working on site must hold a Facility Access with Escort Security Clearance, this includes persons working to correct deficiencies or do warranty work, issued by RCMP Departmental Security. Refer to Annex D.

SC02 INSURANCE TERMS

1) Insurance Contracts

(a) The Contractor must, at the Contractor's expense, obtain and maintain insurance contracts in accordance with the requirements of the Certificate of Insurance. Coverage must be placed with an Insurer licensed to carry out business in Canada.

(b) Compliance with the insurance requirements does not release the Contractor from or reduce its liability under the Contract. The Contractor is responsible for deciding if additional insurance coverage is necessary to fulfill its obligation under the Contract and to ensure compliance with any applicable law. Any additional insurance coverage is at the Contractor's expense, and for its own benefit and protection.

2) Period of Insurance

(a) The policies required in the Certificate of Insurance must be in force from the date of contract award and be maintained throughout the duration of the Contract.

(b) The Contractor must be responsible to provide and maintain coverage for Products/Completed Operations hazards on its Commercial General Liability insurance policy, for a period of six (6) years beyond the date of the Certificate of Substantial Performance.

3) Proof of Insurance

(a) Before commencement of the Work, and no later than thirty (30) days after acceptance of its bid, the Contractor must deposit with Canada a Certificate of Insurance on the form attached herein.

(b) Upon request by Canada, the Contractor must provide originals or certified true copies of all contracts of insurance maintained by the Contractor pursuant to the Certificate of Insurance.

4) Insurance Proceeds

In the event of a claim, the Contractor must, without delay, do such things and execute such documents as are necessary to effect payment of the proceeds.

5) Deductible

The payment of monies up to the deductible amount made in satisfaction of a claim must be borne by the Contractor.

Exception to SC02 – Insurance Terms; Proof of Insurance:

All references to the Certificate of Insurance (form PWGSC-TPSGC 357) in the instructions, general terms, conditions and clauses identified in the Invitation to Tender (ITT) by number, date and title, and set out in the Standard Acquisition Clauses and Conditions Manual (<http://publiservice-app.pwgsc.gc.ca/forms/pdf/357.pdf>), are to be replaced with “**Appendix 1 – RCMP CERTIFICATE OF INSURANCE / ATTESTATION D’ASSURANCE - GRC**”



SC03 SUBMISSION OF BID

1. Addition to R2710T General Instructions – Construction Services – Bid Security Requirements; GI09 Submission of Bid.
2. Copies of first page of amendment(s) to be submitted with bid, duly signed/initialed, verifying proof of receipt.

SC04 MANDATORY HEALTH & SAFETY

FOR WORK IN MANITOBA

1. EMPLOYER/PRIME CONTRACTOR

- 1.1. The Contractor shall, for the purposes of the Occupational Health and Safety Act - Manitoba, and for the duration of the Work of the Contract:
 - 1.1.1. act as the Employer, where there is only one employer on the work site, in accordance with the Authority Having Jurisdiction;
 - 1.1.2. accept the role of Contractor/Principal Contractor/Constructor, where there are two or more employers involved in work at the same time and space at the work site, in accordance with the Authority Having Jurisdiction; and
 - 1.1.3.. agree, in the event of two or more Contractors working at the same time and space at the work site, without limiting the GC3 - Execution and Control of Work GC 3.7, to the Project Managers order * to:
 - 1.1.3.1. assume, as the Principal Contractor, the responsibility for the Canada's other Contractor(s); or
 - 1.1.3.2. accept that Canada's other Contractor is Principal Contractor and conform to that Contractor's Site Specific Health and Safety Plan.

* "order definition": after contract award, Contractor is ordered by a Change Order

2. WORKERS COMPENSATION BOARD AND SAFETY PROGRAM

- 2.1. The recommended Tenderer shall provide to the Contracting Authority, prior to Contract Award:
 - 2.1.1. A Workers Compensation Board Claims Cost Summary - Manitoba
 - 2.1.2. a Workers Compensation Board letter of good standing, also listing covered Directors, Principals, Proprietor(s) or Partners who will be or will be or who are anticipated to be present on the work site(s); and
 - 2.1.3. a Certificate of Recognition (COR) or Registered Safety Plan (RSP) acceptable to the Authority Having Jurisdiction (AHJ). A health and safety policy and program, as required by the respective provincial/territorial Occupational Health and Safety Act, will be acceptable in lieu of a COR or RSP. If none is required by law, a copy of a health and safety policy and program that has been sent to the AHJ for review will also be acceptable, provided that the recommended Tenderor certifies that it has been sent to the AHJ.
- 2.2. The recommended Tenderer shall deliver all of the above documents to the Contracting Authority on or before the date stated (usually 3-5 days after notification) by the Contracting Authority. Failure to comply will result in a breach of promise/disqualification from the project,



at which time the Contracting Authority will be free to approach the next lowest responsive/another Tenderer.

3. PERMITS, NOTIFICATIONS AND SAFETY PLAN

2.1. The Contractor shall provide to the Project Manager:

3.1.1. prior to the pre-construction meeting, a transmittal and copy of the Advance Notification of Project form, contained herein, as sent to the Authority Having Jurisdiction (AHJ), unless this requirement is waived by the Project Manager; and

3.1.2. prior to commencement of work and without limiting the terms of General Instructions to Bidders GI14 and GC4 - Protective Measures GC 4.2

3.1.2.1. copies of all other necessary permits, notifications and related documents as called for in the scope of work/specifications and/or (AHJ); and

3.1.2.2. a site specific Health and Safety Plan which is acceptable to the AHJ, unless this requirement is waived by the Project Manager.



ADVANCE NOTIFICATION OF CONSTRUCTION PROJECT

To Provincial Labour Authority:
 This Advance Notification is to advise you that we, the listed contractor, will be undertaking a Federal Construction Project within your jurisdiction for which we are designated the Prime/Principal/General Contractor and that we will be the party responsible for the overall coordination of safety on the construction site.

A pre-construction meeting for this project will be held at (Location) _____ on (Date) _____ at (Time) _____. An invitation for a representative of the provincial/territorial authority to attend this meeting is extended. The Site Specific Safety Plan will be reviewed at this meeting. Should you wish to attend please contact the name listed below.

Date:		File Number:	
Contract Amount:		Project Number:	
Business/Legal Name of Employer/Prime Contractor (AB)(BC); Employer/Contractor (SK); Employer/Principal Contractor (MB)(QC)(NF&Labrador)(NT & Nunavet); Employer/Constructor (ON)(NS)(NB)(PE)(YT)			
<u>Mailing Address:</u>		<u>Telephone:</u>	
		<u>Fax Number:</u>	
		<u>Contact Name:</u>	

PROJECT DETAILS

Location of Project	
Nature of Work/Process Undertaken	
Name of Site Superintendent	
Contact Number for Superintendent	
Estimated Start Date of Project	
Estimated Project Duration	
Number of Workers to be Employed	

List of Sub-Contractors to be Employed (Use additional Space if Required)

Company Name	Business Address/Location

OWNER INFORMATION

Project Owner:	Royal Canadian Mounted Police
Owners Representative:	
Owner Representative Contact Number:	



Hazardous Regulated Activities

This is a notification to the Provincial/Territorial Labour Authority of the Hazardous Regulated Activities that are to be undertaken during the project by the Prime/Principal Contractor or Constructor or any sub-contractors. This list may not be inclusive and may be amended from time to time.

Note to Prime/Principal Contractor or Constructor:

Any Hazardous Regulated Activities which are listed must also have elements included in the Site Specific Safety Plan Listing working Procedures for those activities.

Check Box for activities to be undertaken and provide estimated duration of activities in hours/days.

Check	Activity	Estimated Duration
	Working in or with Trenching/Excavation/Tunnels	
	Use of Scaffolding/Swing Stages	
	Working from Heights requiring fall protection systems	
	Crane Operations	
	Working from Heights requiring fall protection systems	
	Crane Operations	
	Work in Confined Spaces	
	Blasting and/or use of explosives	
	Use and or exposure to high voltage electrical	
	Hot Work	
	Demolition	
	Use of temporary structures, stairs, ramps or landings, and constructed ladders	
	Use of Heavy Equipment which may/may not require traffic control	
	Working on or near water	
	Working with hazardous substances/regulated products *	
	Working with radiation emitting devices	
	Working with or exposure to Asbestos, PCBs or Lead	

Please list any other hazardous regulated activities, which are not listed, below:

* If the work is to occur in an occupied space, as a renovation or a lease fit-up, the Prime/Principal Contractor or Constructor is required to provide copies of MSDSs for all controlled products to the Owner's Representative and to maintain copies on site.



DISTRIBUTION

The Prime/Principal Contractor or Constructor is responsible to ensure proper distribution of this form and must provide proof that the form was sent to the Labour Authority. Work activities cannot commence until such proof has been provided. Proof can be by registered mail receipt, or by providing a copy of a fax transmittal notice, or any other means providing indication that the Labour Authority has received this document:

Original: to applicable provincial/territorial labour authority
Copies to: RCMP Project Manager

A copy of this form is to be posted at the project site prior to the commencement of work.

NOTE:

Please do not include any forms that include personal 3rd party information such as the names of the contractor's employees and their related claims information

LABOUR AUTHORITY CONTACTS

The contacts below represent the Labour Authority in the various jurisdictions. They are not representatives of the Workers Compensation. Do not contact the people referenced below for issues pertaining to WCB or WCB Clearances. Those queries must be directed specifically to the WCB, and where the WCB has both a Labour and Compensation component, WCB issues must be directed to the Compensation/Employer Services sections.

Manitoba Labour:

Workplace Safety and Health Branch
200 - 401 York Avenue
Winnipeg, MB R3C 0P8

Attention: Ron Humeniuk, Client Services

Telephone: 204-945-6848
Facsimile: 204-945-4556



CONTRACT DOCUMENTS (CD)

1) The following are the contract documents:

- (a) Contract Page when signed by Canada;
- (b) Duly completed Bid and Acceptance Form and any Appendices attached thereto;
- (c) Drawings and Specifications;
- (d) General Conditions and clauses:

GC1	General Provisions	R2810D	(2016-04-04);
GC2	Administration of the Contract	R2820D	(2016-01-28);
GC3	Execution and Control of the Work	R2830D	(2015-02-25);
GC4	Protective Measures	R2840D	(2008-05-12);
GC5	Terms of Payment	R2850D	(2016-01-28);
GC6	Delays and Changes in the Work	R2865D	(2016-01-28);
GC7	Default, Suspension or Termination of Contract	R2870D	(2008-05-12);
GC8	Dispute Resolution	R2880D	(2016-01-28);
GC9	Contract Security	R2890D	(2014-06-26);
GC10	Insurance	R2900D	(2008-05-12);

Supplementary Conditions:

Allowable Costs for Contract Changes Under GC6.4.1 R2950D (2015-02-15);
Schedules of Wage Rates for Federal Construction Contracts;

- (e) Any amendment issued or any allowable bid revision received before the date and time set for solicitation closing;
- (f) Any amendment incorporated by mutual agreement between Canada and the Contractor before acceptance of the bid; and
- (g) Any amendment or variation of the contract documents that is made in accordance with the General Conditions.

2) The documents identified by title, number and date above are incorporated by reference and are set out in the Standard Acquisition Clauses and Conditions (SACC) Manual, issued by Public Works and Government Services Canada (PWGSC). The SACC Manual is available on the PWGSC Web site: <https://buyandsell.gc.ca/policy-and-guidelines/standard-acquisition-clauses-and-conditions-manual>

3) Schedules of Wage Rates for Federal Construction Contracts is included by reference and may be accessed from the Web site: http://www.rhdcc-hrsdc.gc.ca/eng/labour/employment_standards/contracts/schedule/index.shtml.

4) The language of the contract documents is the language of the Bid and Acceptance Form submitted.

5) **Authorities:**

Contracting Authority:

The Contracting Authority for the Contract is:

Cathi Johannson
Royal Canadian Mounted Police
Senior Contracting Officer
1091 Portage Avenue
Winnipeg, MB R3C 3K2



Royal Canadian Mounted Police
Gendarmerie royale du Canada

Government
of Canada

Gouvernement
du Canada

Solicitation No./No de l'invitation: M5000-17-0420/A

Telephone: (204) 984-1836
 Facsimile: (204) 984-4253
 E-mail: cathi.johannson@rcmp-grc.gc.ca

The Contracting Authority is responsible for the management of the Contract and any changes to the Contract must be authorized in writing by the Contracting Authority. The Contractor must not perform work in excess of or outside the scope of the Contract based on verbal or written requests or instructions from anybody other than the Contracting Authority.

Project Authority:

The Project Authority for the Contract is: (to be completed upon contract award)

Name: _____
 Title: _____
 Organization: _____
 Address: _____

Telephone: _____
 Facsimile: _____
 E-mail: _____

The Project Authority is the representative of the department or agency for whom the Work is being carried out under the Contract and is responsible for all matters concerning the technical content of the Work under the Contract. Technical matters may be discussed with the Project Authority; however, the Project Authority has no authority to authorize changes to the scope of the Work. Changes to the scope of the Work can only be made through a contract amendment issued by the Contracting Authority.



BID AND ACCEPTANCE FORM (BA)

BA01 IDENTIFICATION

Supply all labour, materiel, tools, equipment, transportation, accommodations and supervision necessary to complete Parking Lot and Civic Upgrades on the property adjacent to the Steinbach RCMP Detachment in accordance with the Invitation to Tender package.

BA02 BUSINESS NAME AND ADDRESS OF BIDDER

Name: _____

Address: _____

Telephone: _____

Fax: _____

E-mail: _____

GST #: _____

PBN: _____

BA03 THE OFFER

The Bidder offers to Her Majesty the Queen in right of Canada to perform and complete the Work for the above named project in accordance with the Bid Documents for the Firm Lot Price indicated in Annex B excluding HST/GST.

BA04 BID VALIDITY PERIOD

The bid shall not be withdrawn for a period of (60) days following the date of solicitation closing.

BA05 ACCEPTANCE AND CONTRACT

Upon acceptance of the Contractor's offer by Canada, a binding Contract shall be formed between Canada and the Contractor. The documents forming the Contract shall be the contract documents identified in Contract Documents (CD).

BA06 CONSTRUCTION TIME

The Contractor shall perform and complete the Work by October 31, 2016.

BA07 BID SECURITY

The Bidder is enclosing bid security with its bid in accordance with GI08 - Bid Security Requirements of R2710T - General Instructions – Construction Services – Bid Security Requirements.



Royal Canadian Mounted Police
Gendarmerie royale du Canada

Government
of Canada

Gouvernement
du Canada

Solicitation No./No de l'invitation: M5000-17-0420/A

BA08 SIGNATURE

Name and title of person authorized to sign on behalf of Bidder (Type or print)

Signature

Date



ANNEX A

SCOPE OF WORK

The Work at the Steinbach RCMP Detachment is to include the following as further detailed in the drawings (attached as Annex C) and specifications incorporated herein:

- Parking Lot construction including re-shaping and repaving
- Embankment Construction and lot grading
- Concrete approach construction

The premise may be occupied and in-use 24 hours/day, 7 days/week. Hours of work are to be negotiated between the Project Manager representing the RCMP, the Detachment Commander and the Contractor.

The Contractor will provide all labour, material, equipment, tools and supervision required to perform the work specified hereunder (the 'Work'):

1. GENERAL

- .1 This section defines the methods of measure and items of work listed in Annex B – Basis of Payment.
- .2 References are made to the City of Steinbach Standard Design and Construction Specifications (<http://www.steinbach.ca/departments-and-services/engineering-and-infrastructure/>) using the numbering system contained therein. Refer to these sections for the description of work included.

2. RELATED REQUIREMENTS

- .1 Section 01100 – Special Project Procedures:

SP-1 RESTORATION

.1 The Contractor shall exercise all necessary precautions so as to not remove, disturb, or damage any existing trees, poles, water and sewer pipes, connections and appurtenances, underground or overhead utilities, or other existing facilities and equipment in the work area.

.2 Any damage to existing pavements, curbs, landscaping, grading, or private property beyond the limits of work shown on the drawings and resulting from the Contractor's method of work or negligence shall be repaired to a condition equal to or better than original condition at the Contractor's cost. Acceptance of restoration will be made by the Engineer and the City of Steinbach.

SP-2 STAKES AND MARKS

.1 The Contractor shall provide and pay for all stakes, markers, tools and any survey assistance required in setting stakes, checking of line and grade, or quantity measurement. The personnel supplied shall be acceptable to the Engineer. The Contractor shall make available to the Engineer, the same personnel throughout the course of the work.

SP-3 DISPOSAL OF EXCAVATED MATERIAL

.1 Excavated material shall be re-used within the right of way as boulevard fill. The fill material shall be placed, graded and compacted in thicknesses not exceeding 200mm. at locations to be determined by Engineer. The Contractor shall ensure all drainage courses are protected. Measurement and payment will be at the applicable Unit Prices.

.2 Any excess excavated material will be required to be disposed of as clean fill at the City of Steinbach Solid Waste Facility located on Hanover Road East. This work will be considered as incidental to the Excavation and Re-Grading, and no additional payment will be made for any works



involved in the removal of excess material.

SP-4 SALVAGE OF EXISTING GRANULAR MATERIAL

.1 Suitable site granular material will be salvaged from the existing roadways and beneath existing pavements to be removed. The material will be stockpiled at the City of Steinbach Operation's Yard located at 51 Millwork Drive.

.2 Suitable site granular material will be measured on a volume basis. Included in salvaging suitable site granular excavation is excavation, loading, hauling, and stockpiling at the City of Steinbach Operation's Yard. The volume to be paid for shall be the total volume excavated at its place of origin as determined by average end area measurements computed by the Engineer.

SP-5 SALVAGE OF EXISTING ASPHALT MATERIAL

.1 All asphalt millings will be required to be stockpiled at the City of Steinbach Operation's Yard located at 51 Millwork Drive. This work will be considered as incidental to the Asphalt Planing, and no additional payment will be made for any works involved in the removal of asphalt material.

.2 All asphalt material excavated (not including Planing) will be required to be hauled offsite and appropriately disposed of by the Contractor. This work will be considered as incidental to the Asphalt Excavation, and no additional payment will be made for any works involved in the removal of asphalt material.

SP-6 ACCESS AND TRAFFIC CONTROL

.1 It shall be the Contractor's responsibility to coordinate the PTH 12, Acres Drive and Penfeld Drive signage with the City of Steinbach and Manitoba Infrastructure and Transportation. The Contractor shall submit his proposed plan for maintaining access, to the Engineer for approval. The proposed plan shall include dates and expected duration of construction for each phase of the work. Access to the site shall be directly off PTH 12N.

.2 All costs related to maintaining barricades including signage, staging, and other costs shall be considered incidental to the Work.

.3 At least one lane of traffic in each direction is to be maintained on PTH 12 at all times.

.4 Access to Acres Drive and Penfeld Drive from PTH 12 will have to be restricted at times in order to expedite the work. All proposed access closures/restrictions with have to be presented in a plan by the Contractor and approved by both the Engineer and the City prior implementation.

.5 The RCMP site will have to have access to Acres Drive maintained at all times.

SP-7 MANITOBA INFRASTRUCTURE AND TRANSPORTATION TRAFFIC ENGINEERING

.1 Manitoba Infrastructure and Transportation (MIT) Traffic Engineering will be conducting signal installation works as part of this project. The Contractor will have to cooperate with MIT and the timing of the works will have to be coordinated between MIT and the Contractor.

3. MEASUREMENT AND PAYMENT

3.1 TS 5000 – Excavation and Backfill

.1 Excavation and Backfill

.1 Trench excavation, backfilling and disposal of excavated material will not be measured as units for payment. Payment for this work will be included in the price bid for the pipe to be installed.



- .2 Replacement of Unsuitable Soil
 - .1 The removal of unsuitable soils and the replacement with suitable materials related to underground installations will be measured on a volume basis. The volume to be paid for will be the total number of cubic metres acceptably placed and compacted, as computed from measurements made by the Engineer, except that no payment will be made for material placed outside of the limits specified for trench excavation.
 - .2 The volume of replacement material will be a measured in its compacted position, and as determined by the method of Average End Areas.
 - .3 Bracing, Shoring and Cribbing
 - .1 Bracing, shoring and cribbing will not be considered as items for payment. Payment for the supply, installation, and removal of sheeting or sheet piling, bracing, shoring, and stringers or waling strips will be included in the price bid for pipe to be installed.
 - .4 Bracing, Shoring Cribbing Left in Place
 - .1 Bracing, shoring and cribbing ordered left in place will be measured on an area basis. The area of bracing, shoring and cribbing left in place to be paid for will be the total number of square metres ordered left in place and as computed from measurements made by the Engineer.
 - .5 Granular Backfill for Where Trenches Cross
 - .1 Granular backfill for trenches where connections cross will be measured on a volume basis. The volume to be paid for will be the total number of cubic metres acceptably placed and compacted, as computed for measurements made by Engineer.

3.2 TS 5400 – Installation or Reconstruction of Wastewater Sewer and Land Drainage Sewer

- .1 Wastewater or Land Drainage Sewers
 - .1 Construction or reconstruction of wastewater or land drainage sewers will be measured on a length basis. The length to be paid for will be the total number of linear metres of wastewater or land drainage sewers installed of each size, type, method of installation and class of backfill, complete with accessories, and appurtenances, measured horizontally at grade, above the centerline of the pipe or box culvert, through fittings and measured from centre to centre of manholes or end to end of box culverts, as computed by measurements made by the Engineer.
 - .2 No depth classification will be made for sewers installed in a trench. No depth classification will be made for sewers installed by trenchless methods.
- .2 Tees, Wyes, Reducers and Bends
 - .1 Supply and installation of sewer fittings and couplings will be measured on a unit basis for each size and type of fitting installed. Payment will be for the total number of fittings supplied and installed in accordance with the specification as measured by the Engineer.
- .3 Connection to Existing Stubs and Pipes
 - .1 Connecting to existing stubs or pipes will be measured on a unit basis. The number of units to be paid for will be the total number of each size and type acceptably connected.
- .4 Infiltration Testing
 - .1 Infiltration testing shall not be considered as an item for payment. Payment for this work will be included in the price bid per linear metre for sewer pipe to be installed and shall be carried out at the discretion of the Engineer.
- .5 Television Inspection



- .1 Television inspection of sewer will be measured on a length basis. The length to be paid for will be the total number of linear metres of television inspection done on sections, which do not indicate any deficiencies in the sewer. Measurement will be done between the centerlines of manholes or other appropriate locations where the equipment may be installed or removed from. There will be no payment for inspection of sections of sewers, which indicate any deficiencies.
- .6 Deflection Testing of Flexible Sewer Pipe
 - .1 No measurement will be made for deflection testing, include all costs in the unit price bid for television inspection.

3.3 TS 5500 – Installation of Sewer Manholes and Catch Basins

- .1 Manhole Bases
 - .1 Construction of manhole bases will be measured on a unit basis for each size and type of manhole base installed. The number of manhole bases to be paid for will be the total number of bases of each size and type acceptably installed. Manhole bases shall consist of that portion of the manhole below the bottom of the risers as shown on the Drawings or Standard Details.
- .2 Catch Basins
 - .1 Catch basin installation including hoods, fittings, and other accessories and appurtenances will be measured for payment on a unit basis for each type and paid for at the Contract Unit Price for "Catch Basins" and "Catch Pits". Number of units to be paid for will be the total number of catch basins and catch pits supplied and installed in accordance with this specification, accepted and measured by the Engineer.
 - .2 Reconnection of up to 1.0 metre of catch basin lead including lead pipe and couplings will be included in catch basin and catch pit installation.
- .3 Manhole Risers
 - .1 Manhole risers will be measured on a vertical metre basis. The vertical height to be paid for will be the total number of vertical metres of risers acceptably installed, measured from the top of the manhole base to the underside of the manhole frame, as computed from measurements made by the Engineer.
- .4 Manhole and Catch Basin Frames and Covers
 - .1 Supply and installation of manhole and catch basin frames and covers will be measured on a unit basis for each type of frame and cover supplied and installed. The number of manhole and catch basin frames and covers to be paid for will be the total number of frames and covers supplied and installed, as computed from measurements made by the Engineer.
- .5 Relocate Existing Catch Basins
 - .1 Relocate existing catch basins including hoods, fittings, and other accessories and appurtenances will be measured for payment on a unit basis and paid for at the Contract Unit Price for "Relocate Existing Catch Basins". Number of units to be paid for will be the total number of catch basins relocated in accordance with this specification, accepted and measured by the Engineer.
 - .2 Reconnection of up to 1.0 metre of catch basin lead including lead pipe and couplings will be included in the relocation of existing catch basins.

3.4 TS 6000 – Sub-grade, Sub-base and Base Course Preparation

- .1 Stripping of Topsoil



-
- .1 Stripping of topsoil will not be measured separately. Stripping will be measured and paid as common excavation.
 - .2 Common Excavation
 - .1 Common excavation will be measured on a volume basis. The volume to be paid for will be the total number of cubic metres that are excavated and hauled to the City of Steinbach Solid Waste Facility in accordance with this Specification and as measured by the Engineer. No payment will be made for material removed outside of the limits of excavation.
 - .2 The volume of excavation will be as measured in its original position, and as determined by the method of Average End Areas.
 - .3 No payment will be made or removal of miscellaneous trees and shrubs unless indicated in the Special Provisions. This work will be considered incidental to the excavation.
 - .4 Material placed within the specified project limits to be used as suitable fill material will be measured and paid as suitable fill material – re-use excavated material.
 - .3 Granular Material Excavation
 - .1 Granular material excavation (stockpile at City Operation's Yard) will be measured on a volume basis. The volume to be paid for will be the total number of cubic metres that are excavated, hauled to and stockpiled at the City of Steinbach Operation's Yard in accordance with the specification as measured by the Engineer. No payment will be made for material removed outside of the limits of excavation.
 - .2 Granular material excavation (re-use as granular road fill) will be measured on a volume basis. The volume to be paid for will be the total number of cubic metres that are excavated and used as granular material (roadway fill) in accordance with the specification as measured by the Engineer. No payment will be made for material removed outside of the limits of excavation.
 - .3 The volume of excavation will be as measured in its original position, and as determined by the method of Average End Areas.
 - .4 Unsuitable Soil Excavation
 - .1 Unsuitable soil excavation will be measured on a volume basis. The volume to be paid for will be the total number of cubic metres that are excavated, disposed of offsite, as computed from measurements made by the Engineer, except that no payment will be made for material excavated outside of the limits specified for excavation.
 - .5 Removal of Existing Pavement
 - .1 Concrete pavement removal will be measured on an area basis. The area to be paid for will be the total number of square metres of existing pavement that is saw cut, excavated, and hauled offsite in accordance with the specification as measured by the Engineer.
 - .2 Removal of concrete curb on existing approaches will be considered incidental to the removal of the approach.
 - .3 Removal of existing concrete curbs will be measured on a linear metre basis. The length to be paid for will be the total length of existing curb that is saw cut, excavated, and hauled offsite in accordance with the specification as measured by the Engineer.
 - .4 Asphalt pavement excavation will be measured on a volume basis. The volume to be paid for will be the total number of cubic metres of existing pavement that is saw cut, excavated, and hauled offsite in accordance with the specification as measured by the Engineer.
 - .6 Sub-grade Compaction



-
- .1 Sub-grade compaction will be measured on an area basis. The area to be paid for will be the total number of square metres that are compacted in accordance with this Specification acceptable to the Engineer, as computed from measurements made by the Engineer.
- .7 Sub-base Material
- .1 Sub-material will be measured on a weight basis. The weight to be paid for will be the total number of tonnes compacted in place, for each type of material, in accordance with this Specification and as computed by the Engineer from the thickness, width and density of the granular sub-base specified. No payment will be made for material place outside the limits of excavation.
- .8 Pit Run (Roadway Fill)
- .1 Pit run to be used as fill up to the bottom of the sub-material will be measured on a weight basis. The weight to be paid for will be the total number of tonnes compacted in place in accordance with this Specification and as computed by the Engineer from the thickness, width and density of the pit run (sub-base material) specified. No payment will be made for material place outside the limits of excavation.
- .9 Base Course Material
- .1 Base course material will be measured on a volume basis. The volume to be paid will be the total number of cubic metres compacted in place in accordance this Specification acceptable to the Engineer, as computed from the thickness and width of the base course specified herein. No payment will be made for material place outside the limits of excavation.
- .10 Geotextile Fabric
- .1 Geotextile fabric will be measured on an area basis. The area to be paid for will be the total numbers of square metres supplied and installed in accordance with the specification, accepted by the Engineer, as computed from measurements made by the Engineer.
- .11 Place and Compact Suitable Fill Material
- .1 Imported fill material will be measured on a volume basis. The volume to be paid will be the total number of cubic metres imported, graded and compacted in place in accordance with the specification, acceptable to the Engineer, for each type of fill material placed. No payment will be made for material placed outside of the limits defined by the Engineer.
- .2 Re-use excavated material as fill will be measured on a volume basis. The volume to be paid will be the total number of cubic metres suitable material re-used from common excavation, hauled to the area of requiring fill material, graded and compacted in place in accordance with the specification, acceptable to the Engineer. No payment will be made for material placed outside of the limits defined by the Engineer.
- .3 Re-use granular material (roadway fill) will be measured on a volume basis. The volume to be paid will be the total number of cubic metres of suitable material re-used from granular excavation, hauled to the area of requiring fill material, graded and compacted in place in accordance with the specification, acceptable to the Engineer. No payment will be made for material placed outside of the limits defined by the Engineer.
- .12 Ditch Re-grading
- .1 Re-grading and or reshaping of existing ditches will be measured on a linear metre basis. The length to be paid will be the total length of ditch re-graded and/or shaped to receive sod, unless otherwise specified, as accepted by the Engineer. Sodding will be paid according to TS 6300.
- .2 Material not re-used on site will be hauled to the City of Steinbach Solid Waste Facility, as



directed by the Engineer.

3.5 TS 6200 Earthwork and Grading for Rural Type Construction

.1 Embankment Construction

- .1 Embankment construction will be measured on a volume basis. The volume to be paid for will be the total number of cubic metres of embankment material that are placed and compacted in accordance with this Specification and as measured by the Engineer. No payment will be made for material placed outside of the limits of placement. Shaping of the side slope where embankment material is placed will be incidental to the placement and compaction of embankment material.

3.6 TS 6300 Boulevard Sodding

.1 Topsoil and Sodding

- .1 Boulevard sodding, including imported topsoil, will be measured on an area basis. The area to be paid for will be the total number of square metres placed in accordance with this Specification, as measured by the Engineer.

3.7 TS 6400 Boulevard Seeding

.1 Topsoil and Seeding

- .1 Boulevard seeding, including imported topsoil, will be measured on an area basis. The area to be paid for will be the total number of square metres placed in accordance with this Specification, as measured by the Engineer.

3.8 TS 6500 Installation of Culverts

.1 Supply and Installation of Culverts

- .1 Supply and installation of culverts will be measured on a linear metres basis, for each size and type culvert and installation method. The length to be paid will be the total length of each size supplied and installed and accepted by the Engineer.
- .2 No additional payment will be made for the backfill material for the installation of the culvert. The backfill material supply and placement shall be incidental to the installation of culverts.

.2 Supply and Installation of Flared End Sections

- .1 Supply and installation of flared end sections will not be measured separately. The supply and installation of flared end sections will be measured and paid as lineal metre of culvert supplied and placed for each size and type of culvert.
- .2 No additional payment will be made for the backfill material for the installation of the flared end section. The backfill material supply and placement shall be incidental to the installation of flared end sections.

.3 Removal of Existing CSP Culverts

- .1 Removal of existing CSP culverts will be measured on a length basis. The length to be paid for will be the total length of culverts removed. Loaded, and hauled to the City yards, or disposed of as directed by the Engineer, and as measured by the Engineer.

3.9 TS 6600 Asphaltic Concrete Pavement Works

.1 Asphaltic Pavement Construction

- .1 Asphaltic pavement construction will be measured on a weight basis. The weight to be paid for will be the total number of tonnes placed and compacted in accordance with the



Specification and accepted by the Engineer, as measured on a certified weigh scale for each type of asphalt material placed.

3.10 TS 6700 Planing of Pavements

- .1 Asphaltic Pavement Removals by Planing
 - .1 Asphalt pavement removal by planing will be measurement on an area basis. The area to be paid for will be the total number of square metres of existing pavement that are milled in place, hauled to and stockpiled at the City of Steinbach Operation's Yard and in accordance with the specification as measured by the Engineer.

3.11 TS 6800 Portland Cement Concrete Works

- .1 Concrete Pavement, Slabs and Approaches
 - .1 Construction of concrete pavements and slabs will be measured on a surface area basis. The surface area to be paid for will be the total number of square metres constructed in accordance with the specification and as measured by the Engineer.
 - .2 Construction of concrete approaches will be measured on a surface area basis. The construction of concrete curbs shall be incidental to the approach construction.
 - .2 No additional payment will be made for the installation of bar mats, tie-bars or dowels. These items shall be incidental to the construction of reinforced concrete pavements.
- .2 Dowel Assemblies
 - .1 Supply and installation of dowel assemblies including epoxy coated dowels, for plain doweled pavement will be measured on a linear measure basis. The length to be paid for will be the total number of metres of transverse joints constructed in accordance with the specification and as measured by the Engineer.
- .3 Concrete Curbs
 - .1 Construction of concrete curbs of each type identified in the schedule of prices will be measured on a linear measure basis. The length to be paid for will be the total number of metres constructed of each type in accordance with the specification and as measured by the Engineer.
- .4 Concrete Curb and Gutter
 - .1 Concrete curb and gutter will be measured on a length basis. The length to be paid for will be the total number of metres constructed in accordance with the specifications for each classification of curb and as measured by the Engineer.
- .4 Concrete Splash Strip
 - .1 Construction of concrete splash strip will be measured on a linear measure basis. The length to be paid for will be the total number of metres constructed in accordance with the specification and as measured by the Engineer.
 - .2 No additional payment will be made for the granular base material required for the construction of concrete splash strip. The granular base material supply and placement shall be incidental to the construction of concrete splash strip.
- .4 Concrete Bullnoses
 - .1 Construction of concrete bullnoses will be measured on an area basis. The area to be paid for will be the total number of square metres of concrete bullnoses constructed and accepted by the Engineer. Granular base material will not be measured separately. All granular base material required for the concrete splash strip construction will be considered incidental to the concrete splash strip construction works.



- .5 Saw-cutting
 - .1 Saw-cutting will not be measured separately. All saw-cutting will be considered incidental to the asphalt or concrete pavement works.

3.12 TS 6850 Portland Cement Concrete Sidewalk

- .1 Concrete Sidewalk
 - .1 Construction of concrete sidewalks will be measured on a surface area basis. The surface area to be paid for will be the total number of square metres constructed in accordance with the specification and as measured by the Engineer. Granular base material will not be measured separately. All granular base material required for the concrete sidewalk construction will be considered incidental to the concrete sidewalk construction works.
- .2 Paraplegic Sidewalk Ramp
 - .1 Construction of paraplegic sidewalk ramp for each type of identified in the schedule of prices will be measured on a length basis. The length to be paid will be the total length of paraplegic sidewalk ramp constructed and accepted by the Engineer.
 - .2 Saw-cutting, concrete removal and hauling of the existing curbs required to construct a paraplegic sidewalk ramps shall be incidental to the construction of paraplegic sidewalk ramps.

3.13 TS 6860 Renewal of Existing Curb

- .1 Renewal of concrete curbs of each type identified in the schedule of prices will be measured on a linear measure basis. The length to be paid for will be the total number of metres of each type of curb renewed in accordance with the specification and as measured by the Engineer.
- .2 Removal of the associated existing concrete curb will be considered incidental to the renewal of the concrete curb.

3.14 TS 6870 Grouted Riprap

- .1 Grouted Riprap Construction
 - .1 Grouted riprap will be measured on an area basis. The area to be paid for will be the number of square metres installed and accepted by the Engineer, from measurements made by the Engineer.
 - .2 This work will include all necessary trimming and excavation and the removal off site, of the excess excavated material, unless otherwise specified.
 - .3 Granular base material will be considered incidental to the construction of grouted riprap.

3.15 TS 7000 Adjustment of Existing Pavement and Boulevard Structures and Appurtenances

- .1 Relocation of Existing Catch Basins
 - .1 Relocation of existing catch basins will be measured on a unit basis. The number to be paid for will be the total number of catch basins that are removed and re-installed in accordance with the specification and accepted by the Engineer.
- .2 Adjustment of Existing Manholes and Catch Basins
 - .1 Adjustment of existing manholes will be measured on a unit basis. The number to be paid for will be the total number of manholes adjusted in accordance with the specification and accepted by the Engineer.



- .2 No payment will be made for the adjustment of existing catch basins. The adjustment of the existing catch basins will be considered incidental to the supply and installation of new catch basin frames and covers.
- .3 Installation of Precast Concrete Ring Sections
 - .1 Installation of precast concrete ring sections will be measured on a vertical height basis. The vertical height to be paid for, as catch basin and manhole risers, will be the total number of vertical metres supplied and installed in accordance with the specification and accepted by the Engineer.
- .4 Installation of Cast Iron Lifter Ring Inserts
 - .1 Installation of cast iron lifter ring inserts of variable heights will be measured on a unit basis. The number to be paid for will be the total number of lifter ring inserts supplied and installed in accordance with this Specification and accepted by the Engineer.
- .5 Adjustment of Existing Water Main Valve Boxes
 - .1 Adjustment of existing water main valve boxes will be measured on a unit basis. The number to be paid for will be the total number of valve boxes adjusted in accordance with this Specification and accepted by the Engineer.
- .6 Adjustment of Existing Curb Stop Boxes
 - .1 Adjustment of existing curb stop boxes is considered incidental to Boulevard Grading. No separate payment will be made for the adjustment of existing curb stop boxes.

3.16 Miscellaneous (Items not covered in the City of Steinbach Standard Design and Construction Specifications)

- .1 Lane Line Painting
 - .1 Lane Line Painting will be measured on a linear metres basis, for the entire length of lane line painting. The length to be paid will be the total length of lane lines painted and accepted by the Engineer.
 - .2 No subdivisions will be made for different colours or types of lane lines.
- .2 Installation of Wooden Bollards
 - .1 Installation of wooden bollards will be measured on a unit basis. The number to be paid for will be the total number of wooden bollards installed in accordance with the specification and accepted by the Engineer.
- .3 Wood Fence Construction
 - .1 Construction of wood fence will be measured on a linear metres basis. The length to be paid for will be the total length of wood fence constructed in accordance with the specification and accepted by the Engineer.
- .4 Tree Clearing (Includes Grubbing)
 - .1 Removal of existing trees will be measured on an area basis. The area to be paid for will be the total area of trees removed, as measured by the Engineer.
 - .2 Trees to be hauled off site to the City of Steinbach Landfill.



ANNEX B
BASIS OF PAYMENT & BASIS OF SELECTION

In consideration of the Contractor satisfactorily completing all of its obligations under the Contract, the Contractor will be paid a firm lot price, as specified in Annex B for a cost of \$ _____ (insert the amount at contract award). Customs duties are included and Applicable Taxes are extra. Canada will not pay the Contractor for any design changes, modifications or interpretations of the Work, unless they have been approved, in writing, by the Contracting Authority before their incorporation into the Work.

The quantities specified hereunder are estimated. The Bidder is responsible for verifying all measurements, equipment and supplies specified herein for accuracy in relation to the Work identified.

ITEM	DESCRIPTION OF WORK	SPEC. REF.	UNITS	EST. QTY.	UNIT PRICE	EXTENSION
1	Land Drainage Sewer	TS 5400				
	a) 250mm PVC SDR 35, Class 2 Backfill		lin.m	30	\$ _____	\$ _____
	b) 250mm PVC SDR 35, Class 4 Backfill		lin.m	15	\$ _____	\$ _____
2	Television Inspection	TS 5400	lin.m	45	\$ _____	\$ _____
3	Catch Basins					
	a) Standard 1800mm Deep Barrel c/w 900mm to 750mm Round to Round Reducer	TS 5500	each	1	\$ _____	\$ _____
4	Catch Basin Frames & Covers					
	a) TF101-3 (Grated Cover)	TS 5500	each	1	\$ _____	\$ _____
5	Manhole Risers	TS 5500	vert.m	0.3	\$ _____	\$ _____
6	Pavement Removal	TS 6000				
	a) Asphalt Pavement					
	ii) Excavation		cu.m	60	\$ _____	\$ _____
	b) Concrete Curb		lin.m	120	\$ _____	\$ _____
7	Excavation	TS 6000				
	a) Granular Material (Stockpile at City Operation's Yard)		cu.m	115	\$ _____	\$ _____
	b) Common (Re-use as Fill)		cu.m	500	\$ _____	\$ _____
	c) Unsuitable Material (Dispose of Offsite)		cu.m	50	\$ _____	\$ _____
8	Subgrade Compaction	TS 6000	sq.m	1,300	\$ _____	\$ _____
9	Geotextile	TS 6000	sq.m	1,300	\$ _____	\$ _____
10	Sub-Base Material					
	a) C-Base (Granular)	TS 6000	tonne	1,000	\$ _____	\$ _____
	b) Pit Run (Roadway Fill)	TS 6000	tonne	450	\$ _____	\$ _____



Royal Canadian Mounted Police
Gendarmerie royale du Canada

Government
of Canada

Gouvernement
du Canada

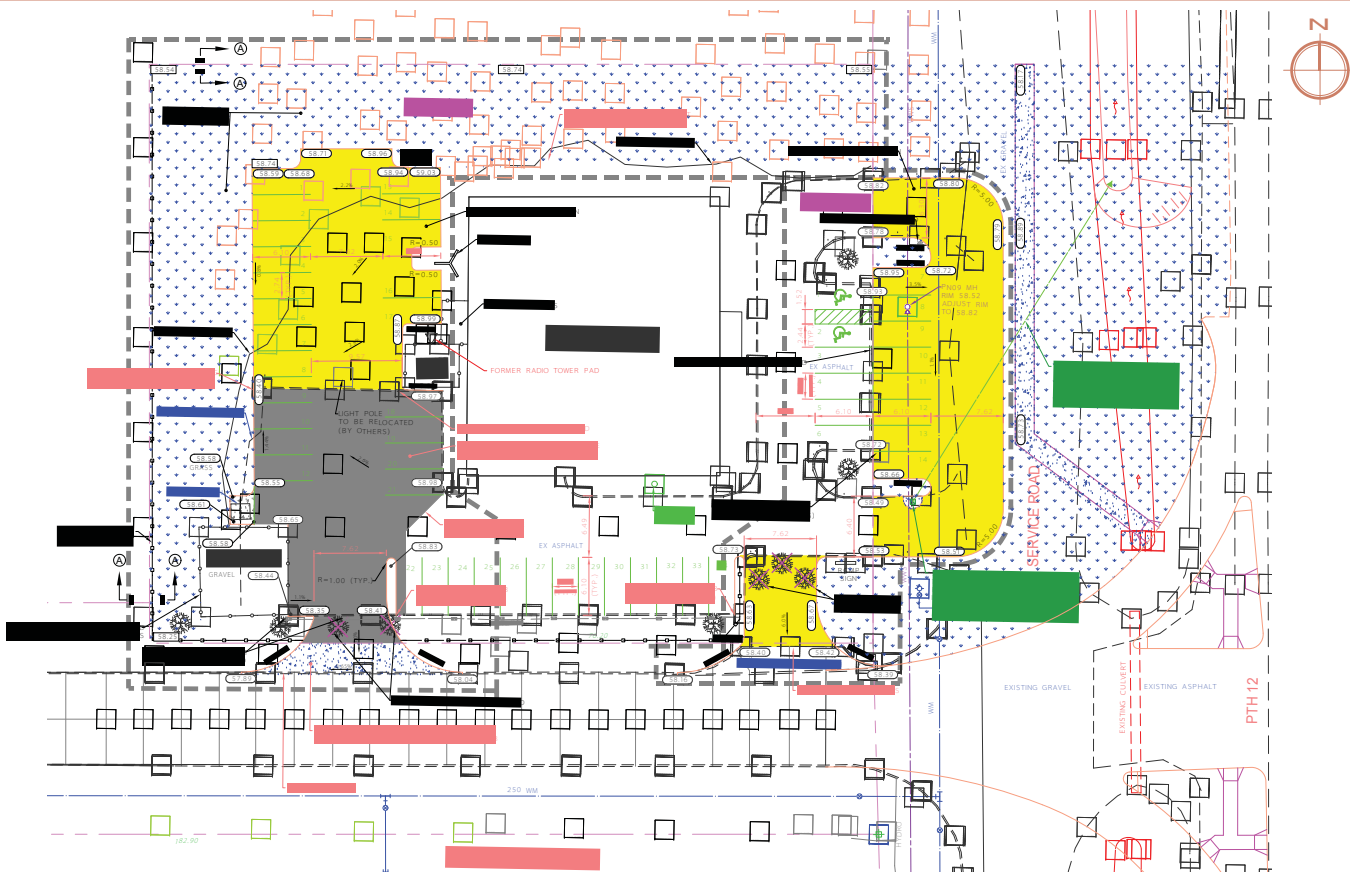
Solicitation No./No de l'invitation: M5000-17-0420/A

11	Base Course Material (Granular A-Base)	TS 6000	cu.m	210	\$ _____	\$ _____
12	Re-shape Base Material	TS 6000	sq.m	430	\$ _____	\$ _____
13	Place and Compact Suitable Fill Material					
	a) Re-use Excavated Material	TS 6200	cu.m	800	\$ _____	\$ _____
	b) Imported Fill Material	TS 6200	cu.m	1,750	\$ _____	\$ _____
14	Topsoil and Sod (Imported Topsoil)	TS 6300	sq.m	1,500	\$ _____	\$ _____
15	Topsoil and Seed (Imported Topsoil)	TS 6400	sq.m	900	\$ _____	\$ _____
16	Asphalt Pavement Construction (Steinbach Type 1A)	TS 6600	tonne	285	\$ _____	\$ _____
17	Concrete Pavement Construction (200mm Reinforced Approach) c/w 150mm Barrier Curb	TS 6800	sq.m	65	\$ _____	\$ _____
18	Concrete Curb Installation	TS 6800				
	a) 150mm Barrier Curb (Pinned)		lin.m	245	\$ _____	\$ _____
	b) Curb Opening		each	1	\$ _____	\$ _____
	c) 40mm Lip		lin.m	25	\$ _____	\$ _____
19	Monolithic Median Slab Installation	TS 6800	sq.m	20	\$ _____	\$ _____
20	Renewal of Existing Curb	TS 6860	lin.m	50	\$ _____	\$ _____
21	Adjust Existing Manholes	TS 7000	each	1	\$ _____	\$ _____
22	Line Painting		Lot	1	\$ _____	\$ _____
23	1.8m Wood Fence Installation		lin.m	125	\$ _____	\$ _____
24	Existing Fence Adjustment		Lot	1	\$ _____	\$ _____
25	Electric Service Post Removal		Lot	1	\$ _____	\$ _____
26	Tree Clearing (Includes Grubbing)		sq.m	2,000	\$ _____	\$ _____
Firm Lot Price						\$ _____

BASIS OF SELECTION

A bid must comply with the requirements of the bid solicitation and meet all mandatory technical evaluation criteria to be declared responsive. The responsive bid with the lowest evaluated price will be recommended for award of a contract.

Annex C - Drawings



- NOTES:**
- ALL WORK AND MATERIALS ARE TO BE IN ACCORDANCE WITH THE LATEST REVISION OF THE CITY OF STEINBACH STANDARD DESIGN AND CONSTRUCTION SPECIFICATIONS, UNLESS NOTED OTHERWISE.
 - ADD 300.00 TO ELEVATIONS TO OBTAIN GEODETIC DATUM.
 - CONTRACTOR TO VERIFY DEPTH OF UTILITIES PRIOR TO CONSTRUCTION. LOCATIONS OF UNDERGROUND STRUCTURES AS SHOWN ARE BASED ON THE BEST INFORMATION AVAILABLE. BUT NO GUARANTEE IS GIVEN THAT ALL EXISTING UTILITIES ARE SHOWN OR THAT THE GIVEN LOCATIONS ARE EXACT. CONFORMATION OF EXISTENCE AND EXACT LOCATIONS OF ALL SERVICES MUST BE OBTAINED FROM THE INDIVIDUAL UTILITIES BEFORE PROCEEDING WITH CONSTRUCTION. ALL EXCAVATED MATERIAL TO BE USED AS ROADWAY FILL OR STOCK PILED AT CITY LANDFILL.
 - ALL RADII AND DIMENSIONS ARE TO BACK OF CURB.
 - MAINTAIN ACCESS TO ALL ESTABLISHMENTS AT ALL TIMES. INTEGRITY OF EXISTING DRAINS TO BE MAINTAINED AT ALL TIMES.
 - RESTORE ALL SURFACES TO EQUAL OR BETTER CONDITIONS.
 - ALL BACK FILL WITHIN ROADWAY AREAS IS TO BE CLASS 4 BACKFILL.
 - ALL BACKFILL WITHIN 2.0M OF THE ROADWAY IS TO BE CLASS 2 BACKFILL.

CITY OF STEINBACH RCMP HEADQUARTERS SITE STORM WATER RUNOFF CALCULATIONS:

- RATIONAL FORMULA USED:
 $Q = CIA$
 $Q =$ FLOW IN CFS
 $I =$ RAINFALL INTENSITY IN INCHES/HR
 $A =$ AREA IN ACRES
 FOR A STORM WITH A TIME OF 15 MINUTES
 $I = 2.48 \text{ IN/HR (2 YEAR STORM)}$
 $I = 5.01 \text{ IN/HR (25 YEAR STORM)}$
 ALLOWABLE RUNOFF COEFFICIENT IS $C = 0.35$
- STORM CALCULATION
 SITE AREA = 1.281 ACRES
 ALLOWABLE PEAK FLOW = 1.379 cfs

RUNOFF COEFFICIENT CALCULATION TABLE

SURFACE	AREA	C	C x A
BLUDDING	0.196 ACRES	0.50	0.176
PAVEMENT	0.500 ACRES	0.50	0.500
GRAVEL	0.010 ACRES	0.50	0.005
GRASS	0.475 ACRES	0.10	0.148
TOTAL	1.281 ACRES	SUM =	0.769

WEIGHTED RUNOFF COEFFICIENT $C = 0.769/1.281 = 0.600$

TOTAL GENERATED 25 YEAR PEAK FLOW = 3.851 cfs
STORAGE REQUIRED = 2,261.90 cu.ft (64.05 cu.m)

SEQUENCE OF CONSTRUCTION

- PHASE 1: PRIOR TO SERVICE ROAD CLOSURE**
- WEST APPROACH
 - WEST PARKING AREA
 - NORTH AND WEST PROPERTY LINE GRADING
- PHASE 2: ONLY AFTER WEST SITE ESTABLISHED**
- EAST APPROACH
 - EAST PARKING AREA

EXISTING	LEGEND-PLAN	PROPOSED
150 WM	WATER MAIN	150 WM
300 LDS	LAND DRAINAGE SEWER	300 LDS
250 WWS	WASTEWATER SEWER	250 WWS
	GAS	
	HYDRO	
	CURB AND GUTTER	
	EDGE OF PAVEMENT	
	EDGE OF GRAVEL	
	PROPERTY LINE	
	FENCE	
	CULVERT	
257.847	GROUND ELEVATION	
	ROAD ELEVATION	
	LOT ELEVATION	
	DITCH ELEVATION	
	FLOW DIRECTION	
	SURVEY BAR	
	M.T.S. PEDESTAL	
	M.T.S. MANHOLE	
	HYDROMAT	
	PLUG	
	VALVE	
	CONCRETE	
	ASPHALT (FULL DEPTH)	
	ASPHALT (RE-PAVE)	
	TOPSOIL AND SOD	

MMM GROUP

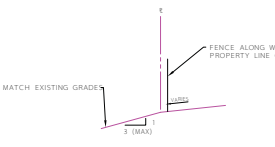
MMM Group Limited
 Suite 111 - 93 Lombard Ave.
 Winnipeg, MB R2S 2S1
 1.204.942.3178
 1.224.542.0446
 www.mmm.ca

NO.	DATE	ISSUED FOR	REVISION	BY	APP'D
1	2016-08-20	ISSUED FOR RFP TENDER		DGD	DGD
2	15-APR-2016	ISSUED FOR CONSTRUCTION		DGD	DGD
3	12-APR-2016	ISSUED FOR CONTRACT		DGD	DGD
4	10-FEB-2016	ISSUED FOR TENDER		DGD	DGD
5	09-FEB-2016	ISSUED FOR APPROVAL		DGD	DGD
6	22-JAN-2016	ISSUED FOR ROW DESIGN REVIEW		DGD	DGD
7	18-DEC-2015	ISSUED FOR ROW DESIGN REVIEW		DGD	DGD
8	18-DEC-2015	ISSUED FOR 2016-03 PACKAGE		DGD	DGD

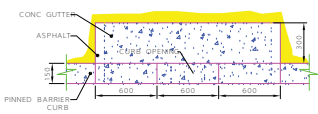


CITY OF STEINBACH LIP CURB DETAIL

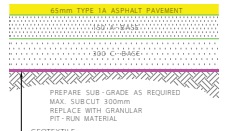
NOTE: REFER TO DRAWING 5515099-C01 TO C06 FOR INTERSECTION



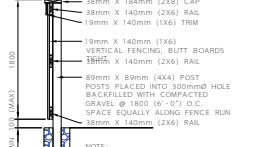
CROSS SECTION A-A



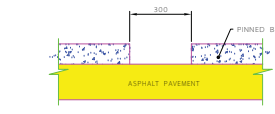
PLAN VIEW CURB OPENING DETAIL



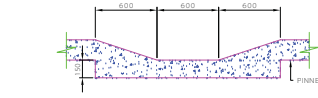
LIGHT DUTY ASPHALT PAVEMENT STRUCTURE



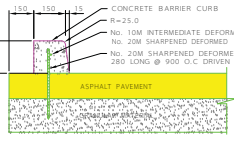
1.8m WOOD FENCE



300mm WIDE CURB OPENING



600mm WIDE CURB OPENING



PINNED BARRIER CURB

METRIC

WHOLE NUMBERS INDICATE MILLIMETRES
 DECIMAL NUMBERS INDICATE METRES

APEGM
 Certificate of Authorization
 MMM Group Limited
 No. 4531

BENCHMARK (B.M.)
 ELEVATION = 258.823
 M 02-TOP OF 'TOP' NUT, SECOND WYBRANT WEST OF PTH #120



KEY PLAN

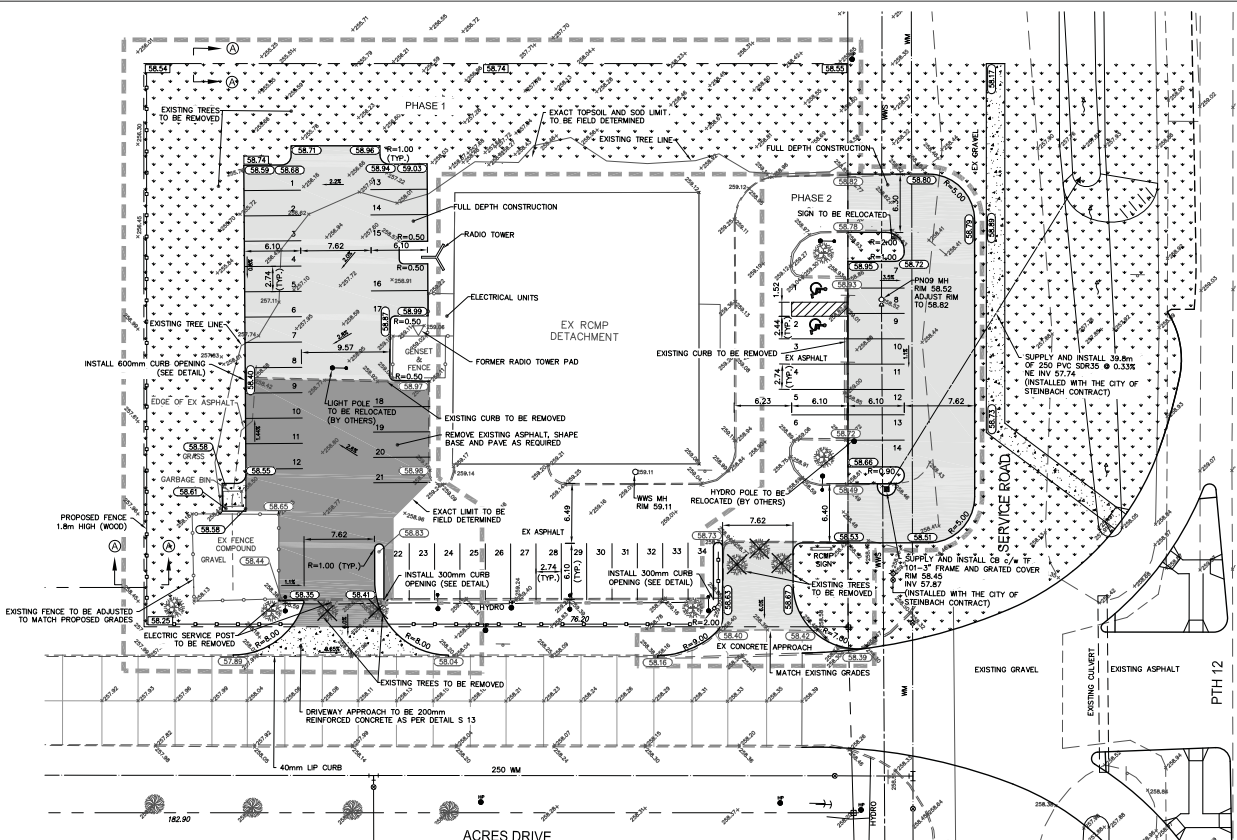
CITY OF STEINBACH
 225 REIMER AVENUE, STEINBACH, MANITOBA, R5E 2T1, 204-335-9877

2016 PTH 12 IMPROVEMENT PROGRAM
 ACRES/PENFOLD INTERSECTION
 IMPROVEMENT PROJECT

STEINBACH RCMP DETACHMENT SITE IMPROVEMENTS

DESIGN	ADR	APPROVED	DATE	SCALE	1:250
DRAWN	ADR/VA	DATE	18-DEC-2015		
CHECKED	DGD	DRAWING NO.	5515102-C01	REV.	H
		ISSUED	2016-03		

Annex C - Drawings



- NOTES:**
- ALL WORK AND MATERIALS ARE TO BE IN ACCORDANCE WITH THE LATEST EDITION OF THE CITY OF STEINBACH STANDARD DESIGN AND CONSTRUCTION SPECIFICATIONS, UNLESS NOTED OTHERWISE.
 - ADD 200.00 TO ELEVATIONS TO OBTAIN GEODETIC DATUM.
 - CONTRACTOR TO VERIFY DEPTH OF UTILITIES PRIOR TO CONSTRUCTION. LOCATIONS OF UTILITIES OR STRUCTURES AS SHOWN ARE BASED ON THE BEST INFORMATION AVAILABLE, BUT NO GUARANTEE IS GIVEN THAT ALL EXISTING UTILITIES ARE SHOWN OR THAT THE GIVEN LOCATIONS ARE EXACT CONFORMATION OF EXISTING AND EXACT LOCATIONS OF ALL SERVICES MUST BE OBTAINED FROM THE INDIVIDUAL UTILITIES BEFORE PROCEEDING WITH CONSTRUCTION.
 - ALL EXCAVATED MATERIAL TO BE USED AS BOULEVARD FILL OR STOCK PILED AT CITY LANDFILL.
 - ALL RADIIUS AND DIMENSIONS ARE TO BACK OF CURB.
 - MAINTAIN ACCESS TO ALL UTILITIES AT ALL TIMES.
 - INTEGRITY OF EXISTING DRAINS TO BE MAINTAINED AT ALL TIMES.
 - RESURF ALL SURFACES TO EQUAL OR BETTER CONDITIONS.
 - ALL BACK FILL WITHIN BOULEVARD AREAS IS TO BE CLASS 4 BACKFILL.
 - ALL BACKFILL WITHIN 2.0m OF THE ROADWAY IS TO BE CLASS 2 BACKFILL.

CITY OF STEINBACH RCMP HEADQUARTERS SITE STORM WATER RUNOFF CALCULATIONS:

1. RATIONAL FORMULA USED:
 $Q = CA$
 $Q = \text{FLOW IN CFS}$
 $I = \text{RAINFALL INTENSITY IN INCHES/HR}$
 $A = \text{AREA IN ACRES}$
 FOR A STORM WITH A TIME OF 15 MINUTES
 $I = 2.63 \text{ IN/HR (2 YEAR STORM)}$
 $I = 5.01 \text{ IN/HR (25 YEAR STORM)}$
 ALLOWABLE RUNOFF COEFFICIENT IS $C = 0.35$

2. STORM CALCULATION
 SITE AREA = 1.281 ACRES
 ALLOWABLE PEAK FLOW = 1.179 cfs

RUNOFF COEFFICIENT CALCULATION TABLE

SURFACE	AREA	C	C X A
BUILDING	0.196 ACRES	0.90	0.176
PAVEMENT	0.020 ACRES	0.90	0.180
GRAVEL	0.010 ACRES	0.50	0.005
GRASS	0.475 ACRES	0.10	0.048
TOTAL	1.281 ACRES		SUM = 0.769

WEIGHTED RUNOFF COEFFICIENT $C = 0.769/1.281 = 0.600$

TOTAL GENERATED 25 YEAR PEAK FLOW = 3.851 cfs
 STORAGE REQUIRED = 2,261.90 cu.ft (64.05 cu.m)

- SEQUENCE OF CONSTRUCTION**
- PHASE 1: PRIOR TO SERVICE ROAD CLOSURE
- WEST APPROACH
 - WEST PARKING AREA
 - NORTH AND WEST PROPERTY LINE GRADING
- PHASE 2: ONLY AFTER WEST SITE ESTABLISHED
- EAST APPROACH
 - EAST PARKING AREA

EXISTING	LEGEND-NUM	PROPOSED
150 WM	WATER MAIN	150 WM
300 LBS	LAND DRAINAGE SEWER	300 LBS
250 WBS	WASTEWATER SEWER	250 WBS
	GAS	
	HYDRO	
	M.T.S.	
	CURB AND GUTTER	
	EDGE OF PAVEMENT	
	EDGE OF GRAVEL	
	PROPERTY LINE	
	FENCE	
	ELEVATION	
100.000	GROUND ELEVATION	100.000
100.000	ROAD ELEVATION	100.000
100.000	LOT ELEVATION	100.000
100.000	DITCH ELEVATION	100.000
	FLOW DIRECTION	
	SURVEY MARK	
	M.T.S. PEDESTAL	
	M.T.S. MANHOLE	
	HYDRO POLE	
	CURB STOP	
	PLUG	
	VALVE	
	HYDRANT	
	MANHOLE	
	CATCH BASIN	
	CURB INLET	
	ADJUSTED UTILITIES	
	LIGHT STANDARD	
	CURB RAMP	
	CONCRETE	
	ASPHALT (FULL DEPTH)	
	ASPHALT (DE-PAVE)	
	TOPSOIL AND SOO	

MMM GROUP

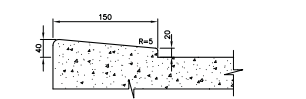
MMM Group Ltd. Red
 Suite 111 - 651 Centennial Ave.
 Winnipeg, MB R2S 2B1
 L204-943-8418
 www.mmm.ca

D. OF DREPER
 PROFESSIONAL ENGINEER

NO.	DATE	REVISION	BY	APPR.
H	30 JAN 2016	ISSUED FOR RFP TENDER	DGD	DGD
G	15 APR 2016	ISSUED FOR CONSTRUCTION	DGD	DGD
F	12 APR 2016	ISSUED FOR CONTRACT	DGD	DGD
E	29 FEB 2016	ISSUED FOR TENDER	DGD	DGD
D	10 FEB 2016	ISSUED FOR APPROVAL	DGD	DGD
C	22 JAN 2016	ISSUED FOR 90% DESIGN REVIEW	DGD	DGD
B	18 DEC 2015	ISSUED FOR 60% DESIGN REVIEW	DGD	DGD
A	14 DEC 2015	ADDED TO 2016-03 PACKAGE	DGD	DGD

A-B
 C

A. DETAIL NO.
 B. DRAWING WHERE DETAIL SHOWN
 C. DRAWING WHERE DETAIL TAKEN



CITY OF STEINBACH LIP CURB DETAIL
 NTS

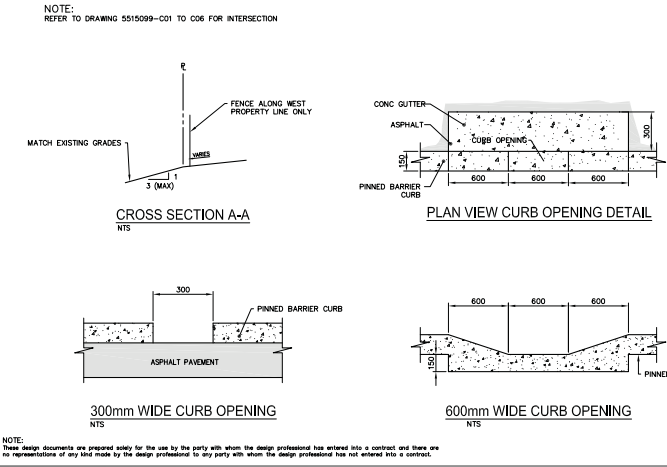
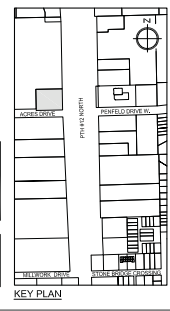
NOTE:
 ALL HARDWARE TO BE SUITABLE FOR P.T. WOOD.
 WOOD FOR FENCES TO BE PRESURE TREATED
 PINE; BROWN COLOR; APPLY CLEAR WOOD PRESERVATIVES TO ALL CUT ENDS.

METRIC

WHOLE NUMBERS INDICATE MILLIMETRES
 DECIMALIZED NUMBERS INDICATE METRES

APEGM
 Certificate of Authorization
 MMM Group Limited
 No. 4531

BENCHMARK (B.M.)
 ELEVATION = 258.833
 M 02-TP OF TOP NW, SECOND HYDRANT WEST OF PTH #12N



NOTE:
 These design documents are prepared solely for the use by the party with whom the design professional has entered into a contract and do not constitute a representation of any kind made by the design professional to any party with whom the design professional has not entered into a contract.

CITY OF STEINBACH
 225 HENRIER AVENUE, STEINBACH MANITOBA, R5G 2P1, 204-226-9877

**2016 PTH 12 IMPROVEMENT PROGRAM
 ACRES/PENFELD INTERSECTION
 IMPROVEMENT PROJECT**

**STEINBACH RCMP
 DETACHMENT SITE
 IMPROVEMENTS**

DESIGNER: **ADRV**
 DATE: 18-DEC-2015
 SCALE: 1:250

PROJECT NO.: **5515102-C01**

DATE: 2016-03

P:\2016\5515102\5515102-001\5515102-001.dwg, 2016-03-18 10:00:00 AM, User: dcm, Plot Date: 2016-03-18 10:00:00 AM, Plot Scale: 1:250

Annex D

SRCL # 2016-1119653



Government of Canada / Gouvernement du Canada

Contract Number / Numéro du contrat
Security Classification / Classification de sécurité

SECURITY REQUIREMENTS CHECK LIST (SRCL) LISTE DE VÉRIFICATION DES EXIGENCES RELATIVES À LA SÉCURITÉ (LVERS)

PART A - CONTRACT INFORMATION / PARTIE A - INFORMATION CONTRACTUELLE		
1. Originating Government Department or Organization / Ministère ou organisme gouvernemental d'origine	D Division	2. Branch or Directorate / Direction générale ou Direction D Division - Asset Management
3. a) Subcontract Number / Numéro du contrat de sous-traitance	3. b) Name and Address of Subcontractor / Nom et adresse du sous-traitant	
4. Brief Description of Work / Brève description du travail Steinbach Detachment DBU 76 . Exterior work to be completed to parking lot , Civic upgrades , water and sewer , as well access and egress to intersection from parking lot to improve officer safety concerns . This is all exterior work.		
5. a) Will the supplier require access to Controlled Goods? Le fournisseur aura-t-il accès à des marchandises contrôlées?	<input checked="" type="checkbox"/> No / Non	<input type="checkbox"/> Yes / Oui
5. b) Will the supplier require access to unclassified military technical data subject to the provisions of the Technical Data Control Regulations? Le fournisseur aura-t-il accès à des données techniques militaires non classifiées qui sont assujetties aux dispositions du Règlement sur le contrôle des données techniques?	<input checked="" type="checkbox"/> No / Non	<input type="checkbox"/> Yes / Oui
6. Indicate the type of access required / Indiquer le type d'accès requis		
6. a) Will the supplier and its employees require access to PROTECTED and/or CLASSIFIED information or assets? Le fournisseur ainsi que les employés auront-ils accès à des renseignements ou à des biens PROTÉGÉS et/ou CLASSIFIÉS? (Specify the level of access using the chart in Question 7. c) (Préciser le niveau d'accès en utilisant le tableau qui se trouve à la question 7. c)	<input checked="" type="checkbox"/> No / Non	<input type="checkbox"/> Yes / Oui
6. b) Will the supplier and its employees (e.g. cleaners, maintenance personnel) require access to restricted access areas? No access to PROTECTED and/or CLASSIFIED information or assets is permitted. Le fournisseur et ses employés (p. ex. nettoyeurs, personnel d'entretien) auront-ils accès à des zones d'accès restreintes? L'accès à des renseignements ou à des biens PROTÉGÉS et/ou CLASSIFIÉS n'est pas autorisé.	<input checked="" type="checkbox"/> No / Non	<input type="checkbox"/> Yes / Oui
6. c) Is this a commercial courier or delivery requirement with no overnight storage? S'agit-il d'un contrat de messagerie ou de livraison commerciale sans entreposage de nuit?	<input checked="" type="checkbox"/> No / Non	<input type="checkbox"/> Yes / Oui
7. a) Indicate the type of information that the supplier will be required to access / Indiquer le type d'information auquel le fournisseur devra avoir accès		
Canada <input type="checkbox"/>	NATO / OTAN <input type="checkbox"/>	Foreign / Étranger <input type="checkbox"/>
7. b) Release restrictions / Restrictions relatives à la diffusion		
No release restrictions Aucune restriction relative à la diffusion <input type="checkbox"/>	All NATO countries Tous les pays de l'OTAN <input type="checkbox"/>	No release restrictions Aucune restriction relative à la diffusion <input type="checkbox"/>
Not releasable À ne pas diffuser <input type="checkbox"/>		
Restricted to: / Limité à : <input type="checkbox"/>	Restricted to: / Limité à : <input type="checkbox"/>	Restricted to: / Limité à : <input type="checkbox"/>
Specify country(ies): / Préciser le(s) pays :	Specify country(ies): / Préciser le(s) pays :	Specify country(ies): / Préciser le(s) pays :
7. c) Level of information / Niveau d'information		
PROTECTED A PROTÉGÉ A <input type="checkbox"/>	NATO UNCLASSIFIED NATO NON CLASSIFIÉ <input type="checkbox"/>	PROTECTED A PROTÉGÉ A <input type="checkbox"/>
PROTECTED B PROTÉGÉ B <input type="checkbox"/>	NATO RESTRICTED NATO DIFFUSION RESTREINTE <input type="checkbox"/>	PROTECTED B PROTÉGÉ B <input type="checkbox"/>
PROTECTED C PROTÉGÉ C <input type="checkbox"/>	NATO CONFIDENTIAL NATO CONFIDENTIEL <input type="checkbox"/>	PROTECTED C PROTÉGÉ C <input type="checkbox"/>
CONFIDENTIAL CONFIDENTIEL <input type="checkbox"/>	NATO SECRET NATO SECRET <input type="checkbox"/>	CONFIDENTIAL CONFIDENTIEL <input type="checkbox"/>
SECRET SECRET <input type="checkbox"/>	COSMIC TOP SECRET COSMIC TRÈS SECRET <input type="checkbox"/>	SECRET SECRET <input type="checkbox"/>
TOP SECRET TRÈS SECRET <input type="checkbox"/>		TOP SECRET TRÈS SECRET <input type="checkbox"/>
TOP SECRET (SIGINT) TRÈS SECRET (SIGINT) <input type="checkbox"/>		TOP SECRET (SIGINT) TRÈS SECRET (SIGINT) <input type="checkbox"/>

Annex D (cont'd)



Government of Canada / Gouvernement du Canada

Contract Number / Numéro du contrat
Security Classification / Classification de sécurité

PART A (continued) / PARTIE A (suite)

8. Will the supplier require access to PROTECTED and/or CLASSIFIED COMSEC information or assets?
 Le fournisseur aura-t-il accès à des renseignements ou à des biens COMSEC désignés PROTÉGÉS et/ou CLASSIFIÉS? No / Non Yes / Oui

If Yes, indicate the level of sensitivity:
 Dans l'affirmative, indiquer le niveau de sensibilité :

9. Will the supplier require access to extremely sensitive INFOSEC information or assets?
 Le fournisseur aura-t-il accès à des renseignements ou à des biens INFOSEC de nature extrêmement délicate? No / Non Yes / Oui

Short Title(s) of material / Titre(s) abrégé(s) du matériel :
 Document Number / Numéro du document :

PART B - PERSONNEL (SUPPLIER) / PARTIE B - PERSONNEL (FOURNISSEUR)

10. a) Personnel security screening level required / Niveau de contrôle de la sécurité du personnel requis

<input type="checkbox"/> RELIABILITY STATUS COTE DE FIABILITÉ	<input type="checkbox"/> CONFIDENTIAL CONFIDENTIEL	<input type="checkbox"/> SECRET SECRET	<input type="checkbox"/> TOP SECRET TRÈS SECRET
<input type="checkbox"/> TOP SECRET - SIGINT TRÈS SECRET - SIGINT	<input type="checkbox"/> NATO CONFIDENTIAL NATO CONFIDENTIEL	<input type="checkbox"/> NATO SECRET NATO SECRET	<input type="checkbox"/> COSMIC TOP SECRET COSMIC TRÈS SECRET
<input checked="" type="checkbox"/> SITE ACCESS ACCÈS AUX EMBLEMES			

Special comments:
 Commentaires spéciaux : Facility Access - Interior and Exterior building access for Det & Housing

NOTE: If multiple levels of screening are identified, a Security Classification Guide must be provided.
 REMARQUE : Si plusieurs niveaux de contrôle de sécurité sont requis, un guide de classification de la sécurité doit être fourni.

10. b) May unscreened personnel be used for portions of the work?
 Du personnel sans autorisation sécuritaire peut-il se voir confier des parties du travail? No / Non Yes / Oui

If Yes, will unscreened personnel be escorted?
 Dans l'affirmative, le personnel en question sera-t-il escorté? No / Non Yes / Oui

PART C - SAFEGUARDS (SUPPLIER) / PARTIE C - MESURES DE PROTECTION (FOURNISSEUR)

INFORMATION / ASSETS / RENSEIGNEMENTS / BIENS

11. a) Will the supplier be required to receive and store PROTECTED and/or CLASSIFIED information or assets on its site or premises?
 Le fournisseur sera-t-il tenu de recevoir et d'entreposer sur place des renseignements ou des biens PROTÉGÉS et/ou CLASSIFIÉS? No / Non Yes / Oui

11. b) Will the supplier be required to safeguard COMSEC information or assets?
 Le fournisseur sera-t-il tenu de protéger des renseignements ou des biens COMSEC? No / Non Yes / Oui

PRODUCTION

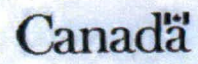
11. c) Will the production (manufacture, and/or repair and/or modification) of PROTECTED and/or CLASSIFIED material or equipment occur at the supplier's site or premises?
 Les installations du fournisseur serviront-elles à la production (fabrication et/ou réparation et/ou modification) de matériel PROTÉGÉ et/ou CLASSIFIÉ? No / Non Yes / Oui

INFORMATION TECHNOLOGY (IT) MEDIA / SUPPORT RELATIF À LA TECHNOLOGIE DE L'INFORMATION (TI)

11. d) Will the supplier be required to use its IT systems to electronically process, produce or store PROTECTED and/or CLASSIFIED information or data?
 Le fournisseur sera-t-il tenu d'utiliser ses propres systèmes informatiques pour traiter, produire ou stocker électroniquement des renseignements ou des données PROTÉGÉS et/ou CLASSIFIÉS? No / Non Yes / Oui

11. e) Will there be an electronic link between the supplier's IT systems and the government department or agency?
 Disposera-t-on d'un lien électronique entre le système informatique du fournisseur et celui du ministère ou de l'agence gouvernementale? No / Non Yes / Oui

Security Classification / Classification de sécurité
--



Annex D (cont'd)



Government of Canada / Gouvernement du Canada

Contract Number / Numéro du contrat
Security Classification / Classification de sécurité

PART C - (continued) / PARTIE C - (suite)

For users completing the form **manually** use the summary chart below to indicate the category(ies) and level(s) of safeguarding required at the supplier's site(s) or premises.
 Les utilisateurs qui remplissent le formulaire **manuellement** doivent utiliser le tableau récapitulatif ci-dessous pour indiquer, pour chaque catégorie, les niveaux de sauvegarde requis aux installations du fournisseur.

For users completing the form **online** (via the Internet), the summary chart is automatically populated by your responses to previous questions.
 Dans le cas des utilisateurs qui remplissent le formulaire **en ligne** (par Internet), les réponses aux questions précédentes sont automatiquement saisies dans le tableau récapitulatif.

SUMMARY CHART / TABLEAU RÉCAPITULATIF

Category / Catégorie	PROTECTED / PROTÉGÉ			CLASSIFIED / CLASSIFIÉ			NATO				COMSEC					
	A	B	C	CONFIDENTIAL	SECRET	TOP SECRET	NATO RESTRICTED	NATO CONFIDENTIAL	NATO SECRET	COSMIC TOP SECRET / COSMIC TRÈS SECRET	PROTECTED / PROTÉGÉ			CONFIDENTIAL	SECRET	TOP SECRET
				CONFIDENTIEL		TRÈS SECRET	NATO DIFFUSION RESTREINTE	NATO CONFIDENTIEL			A	B	C	CONFIDENTIEL		TRÈS SECRET
Information / Assets / Renseignements / Biens / Production																
IT Media / Support TI																
IT Link / Lien électronique																

12. a) Is the description of the work contained within this SRCL PROTECTED and/or CLASSIFIED?
 La description du travail visé par la présente LVERS est-elle de nature PROTÉGÉE et/ou CLASSIFIÉE? No / Non Yes / Oui

If Yes, classify this form by annotating the top and bottom in the area entitled "Security Classification".
Dans l'affirmative, classifiez le présent formulaire en indiquant le niveau de sécurité dans la case intitulée « Classification de sécurité » au haut et au bas du formulaire.

12. b) Will the documentation attached to this SRCL be PROTECTED and/or CLASSIFIED?
 La documentation associée à la présente LVERS sera-t-elle PROTÉGÉE et/ou CLASSIFIÉE? No / Non Yes / Oui

If Yes, classify this form by annotating the top and bottom in the area entitled "Security Classification" and indicate with attachments (e.g. SECRET with Attachments).
Dans l'affirmative, classifiez le présent formulaire en indiquant le niveau de sécurité dans la case intitulée « Classification de sécurité » au haut et au bas du formulaire et indiquez qu'il y a des pièces jointes (p. ex. SECRET avec des pièces jointes).



APPENDIX 1

RCMP CERTIFICATE OF INSURANCE / ATTESTATION D'ASSURANCE – GRC

(To be completed upon award of contract by the Insurer
À être complété de l'attribution du marché par l'Assureur)

CERTIFICATE OF INSURANCE

Description and Location of Work	Contract No.
	Project No.

Name of Insurer, Broker or Agent	Address (No., Street)	City	Province	Postal Code
----------------------------------	-----------------------	------	----------	-------------

Name of Insured (Contractor)	Address (No., Street)	City	Province	Postal Code
------------------------------	-----------------------	------	----------	-------------

Additional Insured
Her Majesty the Queen in Right of Canada as represented by the Royal Canadian Mounted Police (RCMP)

Type of Insurance (Required when Checked)	Insurer Name and Policy Number	Inception Date D / M / Y	Expiry Date D / M / Y	Limits of Liability		
				Per Occurrence	Annual General Aggregate	Completed Operations Aggregate
<input type="checkbox"/> Commercial General Liability				\$	\$	\$
<input type="checkbox"/> Umbrella/Excess Liability				\$	\$	\$
<input type="checkbox"/> Builder's Risk / Installation Floater				\$		
<input type="checkbox"/> Pollution Liability				\$	<input type="checkbox"/> Per Incident <input type="checkbox"/> Per Occurrence	Aggregate \$
<input type="checkbox"/> Marine Liability				\$		
<input type="checkbox"/> Aviation Liability				\$	<input type="checkbox"/> Per Incident <input type="checkbox"/> Per Occurrence	Aggregate \$
<input type="checkbox"/>				\$		

I certify that the above policies were issued by insurers in the course of their Insurance business in Canada, are currently in force and include the applicable insurance coverages stated on page 2 of this Certificate of Insurance, including advance notice of cancellation / reduction in coverage.

 Name of person authorized to sign on behalf of Insurer(s) (Officer, Agent, Broker)

 Telephone Number

 Signature

 Date D / M / Y

<p>General</p> <p>The insurance policies required on page 1 of the Certificate of Insurance must be in force and must include the insurance coverages listed under the corresponding type of insurance on this page.</p> <p>The policies must insure the Contractor and must include Her Majesty the Queen in Right of Canada as represented by the Royal Canadian Mounted Police (RCMP).</p> <p>The insurance policies must be endorsed to provide Canada with not less than thirty (30) days notice in writing in advance of a cancellation of insurance or any reduction in coverage.</p> <p>Without increasing the limit of liability, the policies must protect all insured parties to the full extent of coverage provided. Further, the policies must apply to each Insured in the same manner and to the same extent as if a separate policy had been issued to each.</p>	<p>Commercial General Liability</p> <p>The insurance coverage provided must not be substantially less than that provided by the latest edition of IBC Form 2100.</p> <p>The policy must either include or be endorsed to include coverage for the following exposures or hazards if the Work is subject thereto:</p> <ul style="list-style-type: none"> (a) Blasting. (b) Pile driving and caisson work. (c) Underpinning. (d) Removal or weakening of support of any structure or land whether such support be natural or otherwise if the work is performed by the insured contractor. <p>The policy must have the following minimum limits:</p> <ul style="list-style-type: none"> (a) \$5,000,000 Each Occurrence Limit; (b) \$10,000,000 General Aggregate Limit per policy year if the policy contains a General Aggregate; and (c) \$5,000,000 Products/Completed Operations Aggregate Limit. <p>Umbrella or excess liability insurance may be used to achieve the required limits.</p>	<p>Builder's Risk / Installation Floater</p> <p>The insurance coverage provided must not be less than that provided by the latest edition of IBC Forms 4042 and 4047.</p> <p>The policy must permit use and occupancy of any of the projects, or any part thereof, where such use and occupancy is for the purposes for which a project is intended upon completion.</p> <p>The policy may exclude or be endorsed to exclude coverage for loss or damage caused by asbestos, fungi or spores, cyber and terrorism.</p> <p>The policy must have a limit that is not less than the sum of the contract value plus the declared value (if any) set forth in the contract documents of all material and equipment supplied by Canada at the site of the project to be incorporated into and form part of the finished Work. If the value of the Work is changed, the policy must be changed to reflect the revised contract value.</p> <p>The policy must provide that the proceeds thereof are payable to Canada or as Canada may direct in accordance with GC10.2, "Insurance Proceeds" (https://buyandsell.gc.ca/policy-and-guidelines/standard-acquisition-clauses-and-conditions-manual/5/R/R2900D/2).</p>
<p>Contractors Pollution Liability</p> <p>The policy must have a limit usual for a contract of this nature, but not less than \$1,000,000 per incident or occurrence and in the aggregate.</p>	<p>Marine Liability</p> <p>The insurance coverage must be provided by a Protection & Indemnity (P&I) insurance policy and must include excess collision liability and pollution liability.</p> <p>The insurance must be placed with a member of the International Group of Protection & Indemnity Associations or with a fixed market in an amount of not less than the limits determined by the <i>Marine Liability Act</i>, S.C. 2001, c. 6. Coverage must include crew liability, if it is not covered by the statutory requirements of the Territory or Province having jurisdiction over such employees.</p> <p>The policy must waive all rights of subrogation against Canada as represented by Public Works and Government Services Canada for any and all loss of or damage to the watercraft however caused.</p>	<p>Aviation Liability</p> <p>The insurance coverage shall include Bodily Injury (including passenger Bodily Injury) and Property Damage, in an amount of not less than \$5,000,000 per incident or occurrence and in the aggregate.</p>



APPENDIX 2

BID SUBMISSION CHECK LIST

Submission of Bid, as per R2710T, GI09 and SC03:

- Front page of ITT** - Completed and signed
- BID AND ACCEPTANCE FORM (BA)** - Completed and signed
- Front page of Amendment(s)** - Signed or initialed verifying proof of receipt
- Bid Bond**
- Outside of Envelope** - Solicitation Number, Bidder Name, Return Address, Closing Date and Time.

Refer to SI10 to ensure compliance with Certifications Precedent to Contract award.

To be submitted to the 'RETURN BIDS TO:' address identified on Page 1 of this Invitation to Tender, on or before the solicitation closing date and time.