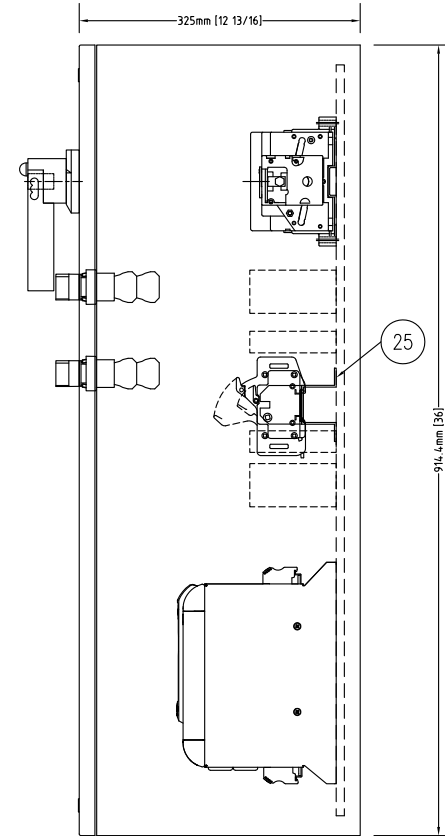
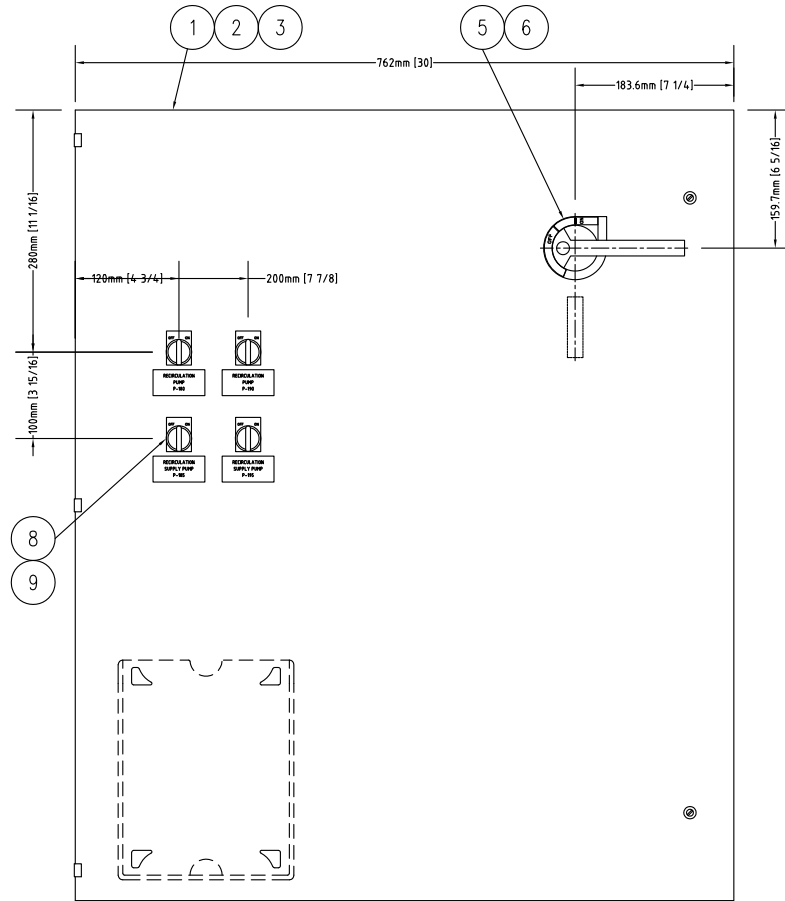
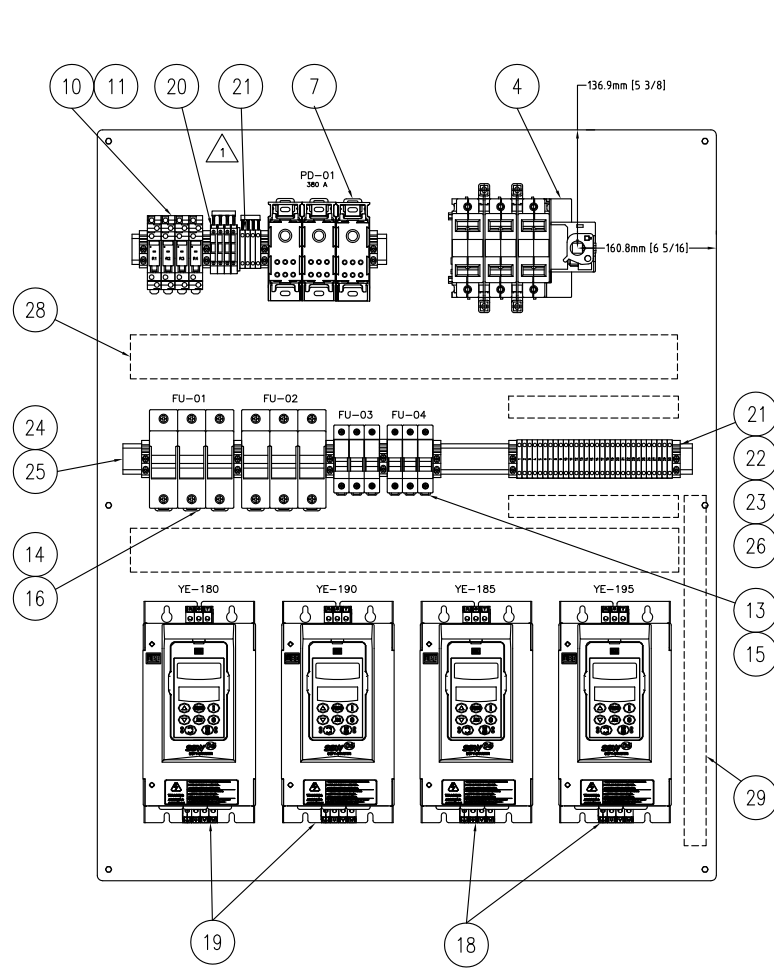


RevNo	Revision note	Date	Signature	Checked
1	REVISED PER COMMISSIONING	6AUG 2013	SB	

CABINET PANEL DETAIL

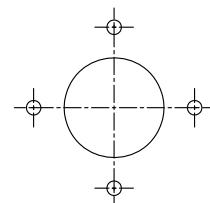
CABINET FRONT DETAIL

CABINET SIDE DETAIL

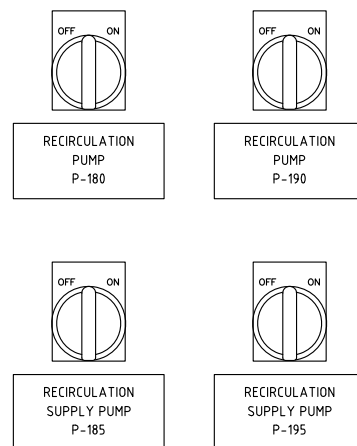
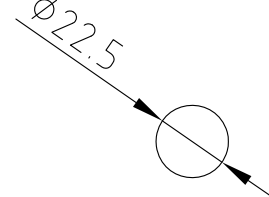


ITEM	QTY	DESCRIPTION
1	1	WIEGMANN, N4/12 SINGLE DOOR WALL MOUNT 36X30X12 IN, N412363012C
2	1	WIEGMANN, SUBPANEL, N412 30X24IN ENCLOSURE W/PN ENDING IN C, NP3630C
3	1	WIEGMANN, N412 MOUNTING FEET 4 FT W/ HARDWARE, N412MFK
4	1	MERSEN, DISCONNECT SWITCH, NON-FUSIBLE, 100A, 3P, 600 VAC, UL 98, SCV100
5	1	MERSEN, SHAFT, TYPE G, LENGTH 320MM/7.9 IN X 10MM THICKNESS, SG320-10
6	1	MERSEN, PISTOL HANDLE, RED, NEMA 12, LONG 4.98 INCH LENGTH HANDLE, TYPE G LONG, HGPRL
7	3	EDISON, DIST BLK, FINGER SAFE, 380A, 6-OUT, 1-IN, 1-POLE, UL LISTED, 1/PK, EPDB306
8	4	EATON, 22 MM METAL RED LED ILLUMINATED 3-POSITION SELECTOR SWITCH. SPRING-RETURN TO CENTER.
9	4	EATON, LEGEND PLATE 22MM "BLANK" ALUMINUM, E22NS36
10	4	OMRON, OMRON, SPDT RELAY, 24 VDC COIL WITH LED INDICATOR, G2R-1-SN-DC24
11	4	OMRON, OMRON, RELAY BASE FOR ITEMS 1 AND 2, P2RF-05E
12		
13	2	FERRAZ SHAWMUT, 3 PHASE, 600V, FINGER SAFE FUSE HOLDER WITH BLOWN FUSE INDICATOR, CLASS CC FUSES.
14	6	FERRAZ SHAWMUT, 3 PHASE, 600V, FINGER SAFE FUSE HOLDER WITH BLOWN FUSE INDICATOR, CLASS J FUSES.
15	6	FERRAZ SHAWMUT, FUSE FOR 10 HP MOTOR, CLASS CC, 30A, CC ATDR30
16	6	FERRAZ SHAWMUT, FUSE FOR 20 HP MOTOR, CLASS J, 35 A, J AJT35
17		
18	2	WEG, WEG SSW06 SOFT STARTER, FOR 10 HP, 575/600 VAC INVERTER DUTY INDUCTION MOTOR, SSW060010T2257ESZ
19	2	WEG, WEG SSW06 SOFT STARTER, FOR 20 HP, 575/600 VAC INVERTER DUTY INDUCTION MOTOR, SSW060023T2257ESZ
20	4	ENTRELEC, FUSED TERM. BLOCK M4/8.SFL, 115.657.25.
21	34	ENTRELEC, TERMINAL BLOCK, M 4/6, WITH TEST SOCKET, 115 217.14
22	1	ENTRELEC, END SECTION, M 4/6, 118 368.16
23	11	ENTRELEC, END STOP (ALL RAILS), 103 002.26
24	0.96	ENTRELEC, ASSY. RAIL, PR30, (2m), DIN 3, 35mm, 173 220.05
25	2	ENTRELEC, RAIL OFFSET BRACKET, TS 0441-SM6, 40mm HIGH, 0101 655.06
26	2	ENTRELEC, VERTICAL, MARKING TAGS, RC610, 1 to 100, 233 060.04
27		
28	1.3	PANDUIT OR EQUAL, WIRING DUCT, 2"W, 4"H ft, WITH COVER, GREY.
29	0.6	PANDUIT OR EQUAL, WIRING DUCT, 1"W, 4"H ft, WITH COVER, GREY.

DOOR DRILLING



CUTOUT FOR PB/LIGHTS



REFERENCE DRAWINGS		
DWG NO.	REV	DESCRIPTION
D-P001617-XXX		RECIRC PUMP WIRING

NOTES:  
 1. ITEMS, 24 TO 30 AND 34 TO 36 TO BE SUPPLIED BY THE SHOP. ALL OTHER ITEMS ARE SUPPLIED BY NRCAN.  
 2. LAMACOID LABELS TO BE SUPPLIED BY THE SHOP, 60 mm X 30 mm, BLACK LETTERS 4 mm HIGH ON WHITE LAMACOID.

Natural Resources Canada CANMET Energy Technology Center	Ressources naturelles Canada Centre de la technologie de l'énergie de CANMET	EngServ CANMET Engineering Services Group	Itemref	Quantity	Title/Name, designation, material, dimension etc	Article No./Reference
			Designed by S. BETHUNE	Checked by S. BETHUNE	Approved by - date	Filename P-001617.001
NRCan-CFF, DCSG			RECIR. PUMPS CABINET ASSY			
			D-P001617-XXX		Edition 1 / Sheet 1/1	

RevNo	Revision note	Date	Signature	Checked
1	REVISED PER COMMISSIONING	7 AUG 2013	SB	
2	REVISED PER COMMISSIONING, RL3 WAS NC, CHANGED TO NO	16 SEPT 2013	SB	

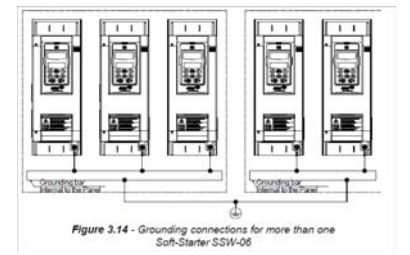
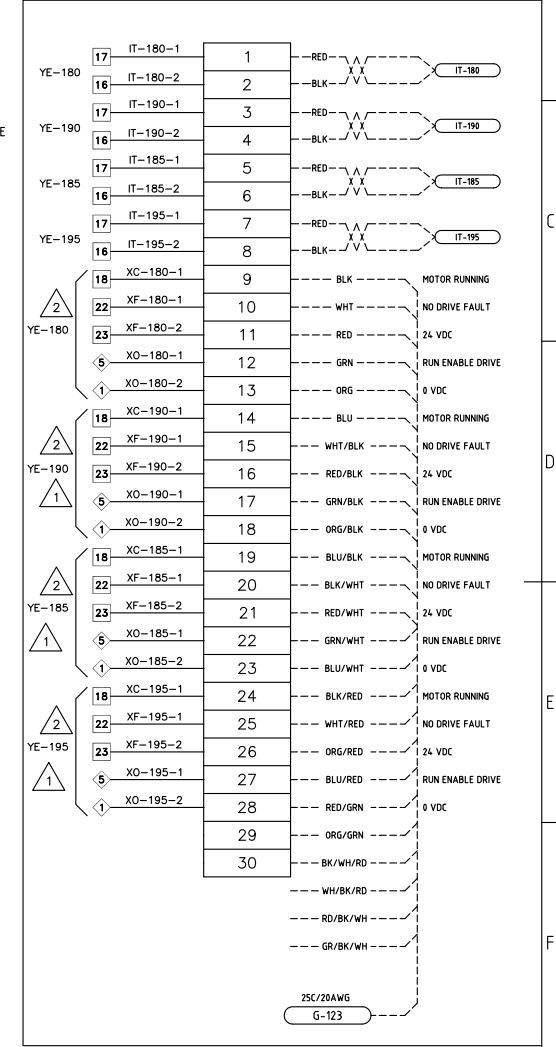
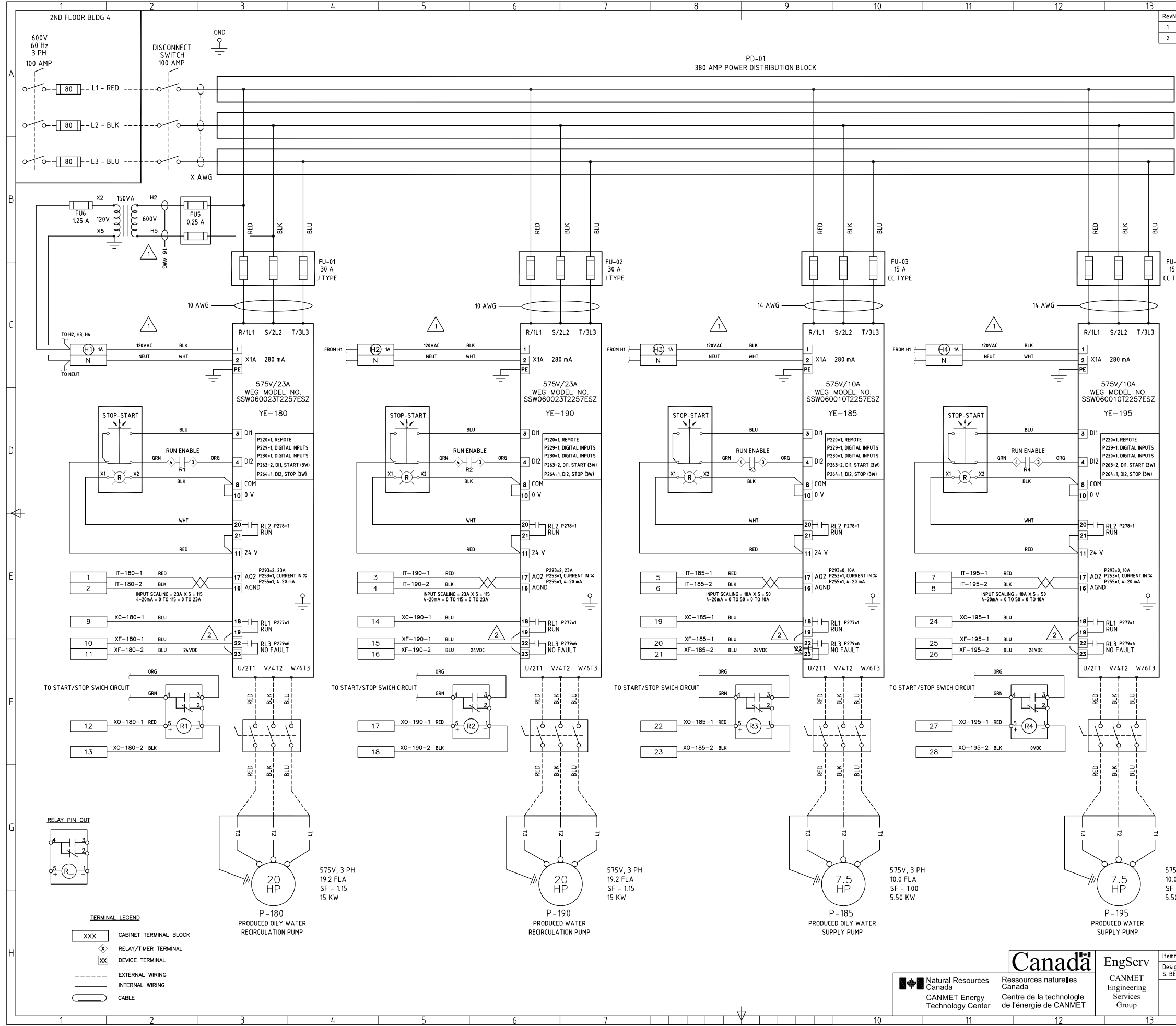


Figure 3.14 - Grounding connections for more than one Soft-Starter SSW-06

**TERMINAL LEGEND**

XXX	CABINET TERMINAL BLOCK
X	RELAY/TIMER TERMINAL
XX	DEVICE TERMINAL
---	EXTERNAL WIRING
---	INTERNAL WIRING
---	CABLE

P-180  
PRODUCED OILY WATER  
RECIRCULATION PUMP  
575V, 3 PH  
19.2 FLA  
SF - 1.15  
15 KW

P-190  
PRODUCED OILY WATER  
RECIRCULATION PUMP  
575V, 3 PH  
19.2 FLA  
SF - 1.15  
15 KW

P-185  
PRODUCED OILY WATER  
SUPPLY PUMP  
575V, 3 PH  
10.0 FLA  
SF - 1.00  
5.50 KW

P-195  
PRODUCED WATER  
SUPPLY PUMP  
575V, 3 PH  
10.0 FLA  
SF - 1.00  
5.50 KW

 Natural Resources Canada CANMET Energy Technology Center	 CANMET Engineering Services Group	Itemref	Quantity	Title/Name, designation, material, dimension etc	Article No./Reference
		Designed by S. BETHUNE	Checked by S. BETHUNE	Approved by - date	Filename P001617-XXX Date 20 FEB 2013 Scale
				<b>RECIRC. PUMPS CABINET WIRING</b> D-P001617-XXX Edition 2 Sheet 1/1	