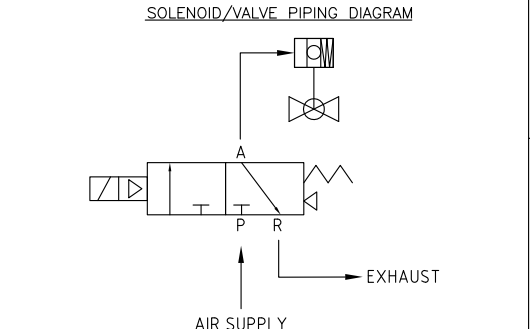


RevNo	Revision note	Date	Signature	Checked
X	X			

ITEM	QTY	DESCRIPTION	PART NO.
1	1	RITTAL AE SINGLE DOOR, WALL MOUNT, ENCL., 500 mm H x 500 mm W x 210 mm,	1050.500
2	1	RITTAL, WALL BRACKET KIT, pkg of 4,	2508.010
3	2	RITTAL, SZ PLASTIC LEVER HANDLE,	2533.000
4			
5	8	MEAD, 1/4" NPT 3/2 N/C HAZ LOC VALVE C/W COIL,	M3V210-08-NC-24VDC-X
6	1	MEAD, 8-STATION MANIFOLD FOR ABOVE VALVES, (4) 1/4" NPT PORTS,	DWG 6670-0
7	8	MEAD, MANIFOLD GASKET AND SCREW KIT,	XXXXX
8	4	DOMINION FITTINGS, PIPE PLUG COUNTERSUNK HEX 1/4 - TO PLUG ONE END OF MANIFOLD,	D118-B
9	8	CAMOZZI, MALE SWIVEL ELBOW 1/4 TUBE - 1/4 NPT - FOR VALVES,	P6520-04-04
10	2	CAMOZZI, STRAIGHT - FOR OTHER END OF MANIFOLD, 1/4in TUBE, 1/4in NPTF	P6510-04-04
11	10	HAM-LET, LET-LOK, 1/4" OD TUBE X 1/4" OD TUBE 316SS BULKHEAD UNION,	774-LSS-04
12	10	HAM-LET, LET-LOK, 316SS TUBE INSERT FOR 1/4" OD TUBING,	774-LISS-040,17
13	4.3FT	FREELIN-WADE, 1/4 O.D. X .160 I.D. BLACK P/U 95A TUBE,	1A-151-0
14			
15	20	ENTRELEC, TERMINAL BLOCK, M 4/6, WITH TEST SOCKET,	115 217.14
16	1	ENTRELEC, END SECTION, M 4/6,	118 368.16
17	2	ENTRELEC, END STOP (ALL RAILS),	206 351.16
18	0.33M	ENTRELEC, ASSY. RAIL, PR30, (2m), DIN 3, 35mm,	173 220.05
19	2	ENTRELEC, RAIL OFFSET BRACKET, TS 0441-SM6, 40mm HIGH,	0101 655.06
20	1	ENTRELEC, SEPARATOR END SECTION, RAIL MOUNT, SCF6,	118 707.03
21	1	ENTRELEC, COMB-TYPE JUMPER BAR, PC6, 10 POLE, 35A, (M 4/6),	113 548.26
22	1	ENTRELEC, LABELS, 1 TO 10, 10 STRIPS PER CARD,	233 002.27
23	1	ENTRELEC, LABELS, 11 TO 20, 10 STRIPS PER CARD,	233 003.20
24	0.3M	PANDUIT OR EQUAL, WIRING DUCT, 1.5"W , 3"H ft, WITH COVER, GREY, 2M,	
25			



REFERENCE DRAWINGS		
DWG NO.	REV	DESCRIPTION
P001617-XXX		Solenoid Cabinet A Wiring

- NOTES:
- ALL ITEMS SUPPLIED BY NRCAN EXCEPT ITEM 18 AND 24.
 - SHOP WILL BE REQUIRED TO ASSEMBLE THE SOLENOID VALVES AND GASKETS TO THE MANIFOLD.
 - CABINET POWER IS 24VDC, NO ESA APPROVAL REQUIRED.
 - ALL TERMINATION OF SOLENOID WIRED TO TERMINAL BLOCKS TO USE CRIMP FERRULES.
 - INTERNAL WIRING TO BE IDENTIFIED WITH HEAT SHRINK LABELS AS NOTED.



Natural Resources Canada
Ressources naturelles Canada
CANMET Energy Technology Center
Centre de la technologie de l'énergie de CANMET

EngServ
CANMET Engineering Services Group

Itemref	Quantity	Title/Name, designation, material, dimension etc	Article No./Reference
Designed by S. BETHUNE	Checked by S. BETHUNE	Approved by - date 18 MAY 2016	Scale
NRCan-CFF, DCSG		SOLENOID VALVE CAB. ASSY	
		D-P001617-XXX	Edition 0 Sheet 1/1

