

**PROPRIETARY DRAWING**

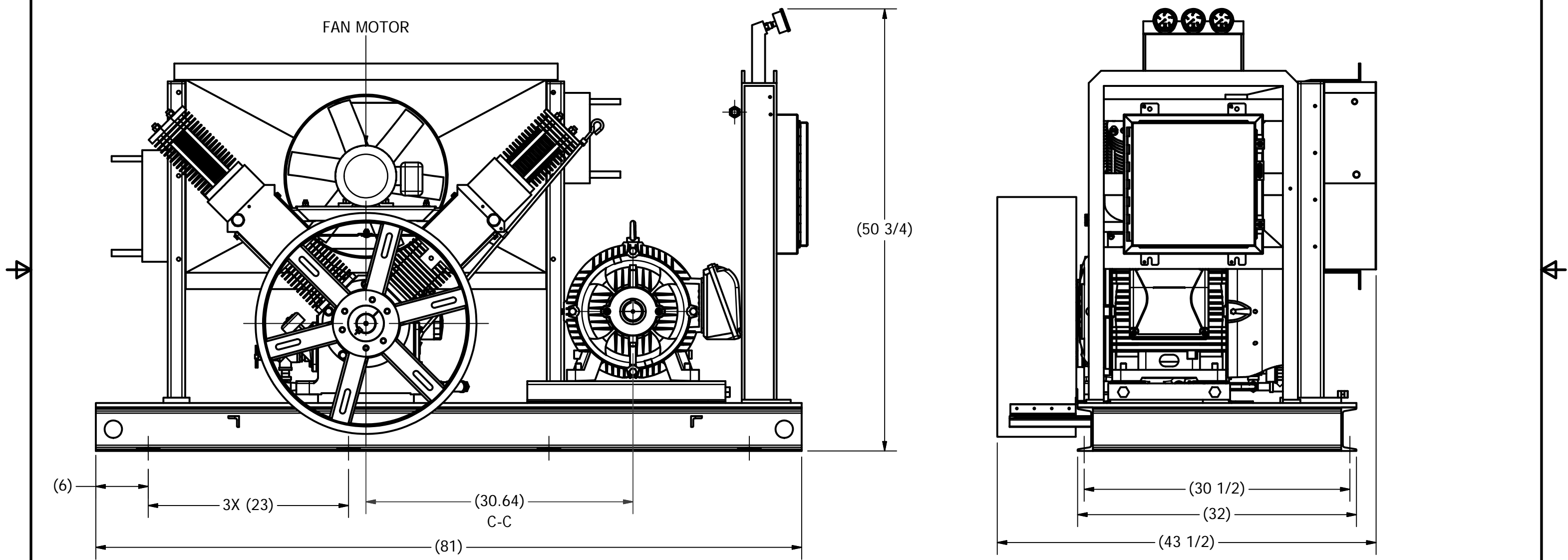
This drawing and the information and data contained herein are the confidential and proprietary property of RIX Industries and may not be used, copied, reproduced, or disclosed for any purpose, without the written permission of RIX Industries.

**NOTES:**

1. NRC, 4VX2B-8.7, CO2 BOOSTER.
2. DUTY: 290 PSIG INLET, 1885 PSIG DISCHARGE, 135 SCFM.
3. DRIVE MOTOR: 40 HP, 575/3PH/60Hz. COMPRESSOR SPEED: 590 RPM
4. PACKAGE WEIGHT: 3000 LBS

**REVISION HISTORY**

REV	DESCRIPTION	DATE	APPROVED



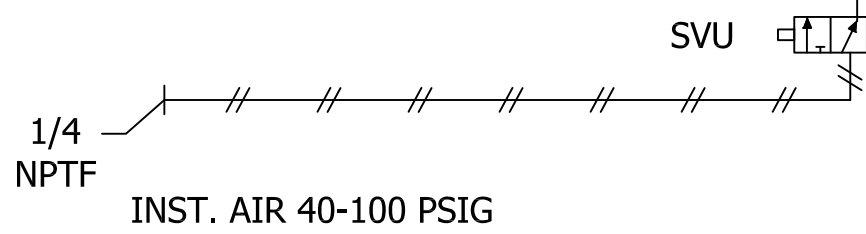
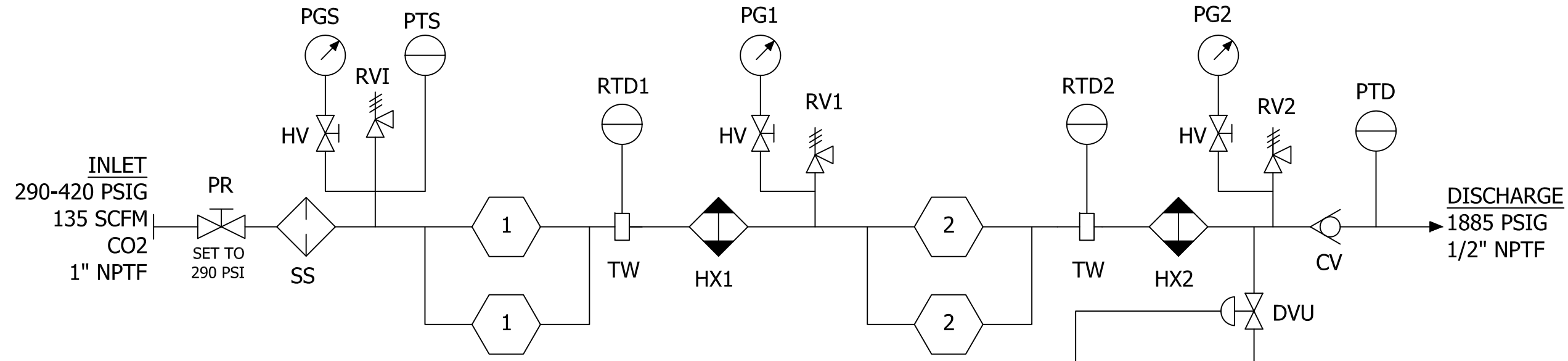
UNLESS OTHERWISE SPECIFIED DIMENSIONS ARE IN INCHES. TOLERANCES ARE: <table border="1"> <tr> <td>DECIMAL</td> <td>WELDS</td> <td>± 1/32</td> </tr> <tr> <td>X ± .1</td> <td>CHAMFERS</td> <td>± 5°</td> </tr> <tr> <td>XX ± .02</td> <td>ANGLES</td> <td>± 2'</td> </tr> <tr> <td>XXX ± .005</td> <td>CAST</td> <td>± 1/8</td> </tr> <tr> <td colspan="3">FRACTIONS ± 1/16</td> </tr> <tr> <td colspan="3">THIRD ANGLE PROJECTION</td> </tr> </table>	DECIMAL	WELDS	± 1/32	X ± .1	CHAMFERS	± 5°	XX ± .02	ANGLES	± 2'	XXX ± .005	CAST	± 1/8	FRACTIONS ± 1/16			THIRD ANGLE PROJECTION			CONTRACT NO. S/N 14183		RIX INDUSTRIES 4900 INDUSTRIAL WAY, BENICIA, CA 94510 ON SAN FRANCISCO BAY SINCE 1878	
	DECIMAL	WELDS	± 1/32																			
	X ± .1	CHAMFERS	± 5°																			
	XX ± .02	ANGLES	± 2'																			
XXX ± .005	CAST	± 1/8																				
FRACTIONS ± 1/16																						
THIRD ANGLE PROJECTION																						
APPROVALS DRAWN JB CHECKED DRD APPROVED CJC		DATE 14/09/11 14/09/12 14/09/15		TITLE <b>INSTALLATION ARRANGEMENT</b> 4VX2B-8.7																		
QA SIMILAR TO NONE		SIZE B	CAGE CODE 28953		DWG NO 19143	REV -																
		SCALE NONE	P/N 4VX2B-8.7	SHEET 1 OF 2																		

PROPRIETARY DRAWING

This drawing and the information and data contained herein are the confidential and proprietary property of RIX Industries and may not be used, copied, reproduced, or disclosed for any purpose, without the written permission of RIX Industries.

REVISION HISTORY

REV	DESCRIPTION	DATE	APPROVED
-----	-------------	------	----------



SYM	REF	P/N	DESCRIPTION	QTY
CV	201	615-9187	CHECK VALVE	1
DVU	202	415-15	DIAPHRAGM VALVE, UNLOADER	1
HV	203	715-47-1	HAND VALVE, GAUGE SNUBBER	3
HX1,2	204	71-19135	HEAT EXCHANGER	1
PG1	205	60-9275-1500	PRESSURE GAUGE, 1ST STG	1
PG2	206	60-9275-3000	PRESSURE GAUGE, 2ND STG	1
PGO	207	60-347	PRESSURE GAUGE, OIL	1
PGS	208	60-9275-400	PRESSURE GAUGE, SUCTION	1
PSO	209	76-704	PRESSURE SWITCH, OIL	1
PTD	210	76-14809	PRESSURE TRANSDUCER, DISCH.	1
PTS	211	76-13230	PRESSURE TRANSDUCER, SUCT.	1
RTD	212	138-5531	RTD	2
RVI	213	515-816-330	RELIEF VALVE, INLET	1
RV1	214	515-816-1050	RELIEF VALVE, 1ST STG	1
RV2	215	515-816-2100	RELIEF VALVE, 2ND STG	1
SS	216	A77-649	FILTER, Y STRAINER	1
SVU	217	315-276	SOLENOID VALVE, DVU	1
TW	218	138-10494	THERMOWELL	2
PR	219	116-19187	PRESSURE REGULATOR	1

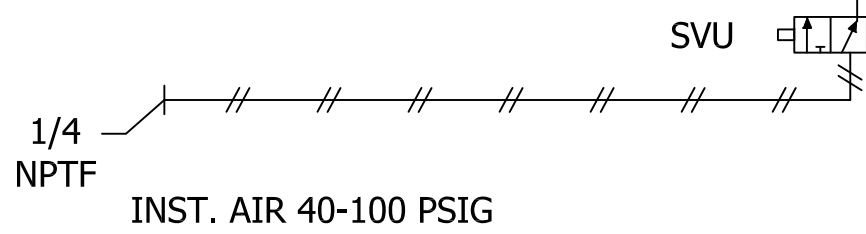
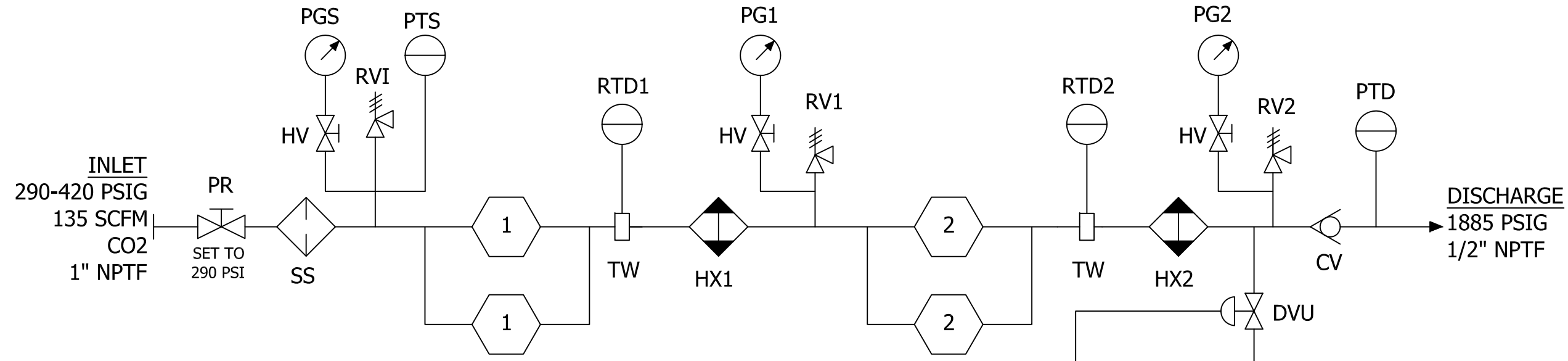
UNLESS OTHERWISE SPECIFIED DIMENSIONS ARE IN INCHES. TOLERANCES ARE: <table border="1"> <tr><td>DECIMAL</td><td>WELDS</td><td>± 1/32</td></tr> <tr><td>X ± .1</td><td>CHAMFERS</td><td>± 5</td></tr> <tr><td>XX ± .02</td><td>ANGLES</td><td>± 2</td></tr> <tr><td>XXX ± .005</td><td>CAST</td><td>± 1/8</td></tr> <tr><td colspan="2">FRACTIONS</td><td>± 1/16</td></tr> <tr><td colspan="3">THIRD ANGLE PROJECTION</td></tr> </table>	DECIMAL	WELDS	± 1/32	X ± .1	CHAMFERS	± 5	XX ± .02	ANGLES	± 2	XXX ± .005	CAST	± 1/8	FRACTIONS		± 1/16	THIRD ANGLE PROJECTION			CONTRACT NO. S/N 14183		RIX INDUSTRIES 4900 INDUSTRIAL WAY, BENICIA, CA 94510 ON SAN FRANCISCO BAY SINCE 1878	
	DECIMAL	WELDS	± 1/32																			
	X ± .1	CHAMFERS	± 5																			
	XX ± .02	ANGLES	± 2																			
XXX ± .005	CAST	± 1/8																				
FRACTIONS		± 1/16																				
THIRD ANGLE PROJECTION																						
<table border="1"> <tr><td>APPROVALS</td><td>DATE</td></tr> <tr><td>DRAWN JB</td><td>14/09/11</td></tr> <tr><td>CHECKED BPS</td><td>14/09/12</td></tr> <tr><td>APPROVED CJC</td><td>14/09/12</td></tr> </table>	APPROVALS	DATE	DRAWN JB	14/09/11	CHECKED BPS	14/09/12	APPROVED CJC	14/09/12	TITLE <h2 style="text-align: center;">FLOW SCHEMATIC</h2> 4VX2B-8.7		SIZE B CAGE CODE 28953 DWG NO 19144 REV -											
APPROVALS	DATE																					
DRAWN JB	14/09/11																					
CHECKED BPS	14/09/12																					
APPROVED CJC	14/09/12																					
SIMILAR TO NONE	SCALE NONE P/N G200-4VX2B-8.7		SHEET 1 OF 2																			

PROPRIETARY DRAWING

This drawing and the information and data contained herein are the confidential and proprietary property of RIX Industries and may not be used, copied, reproduced, or disclosed for any purpose, without the written permission of RIX Industries.

REVISION HISTORY

REV	DESCRIPTION	DATE	APPROVED
-----	-------------	------	----------

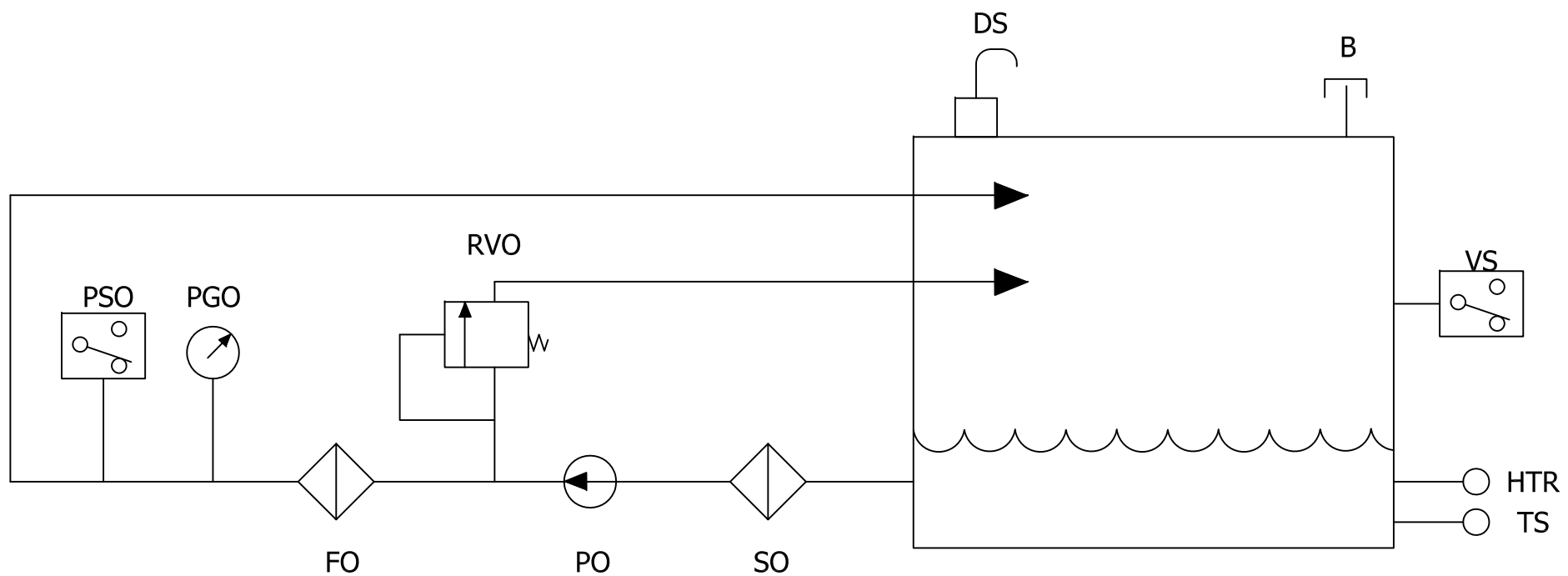


SYM	REF	P/N	DESCRIPTION	QTY
CV	201	615-9187	CHECK VALVE	1
DVU	202	415-15	DIAPHRAGM VALVE, UNLOADER	1
HV	203	715-47-1	HAND VALVE, GAUGE SNUBBER	3
HX1,2	204	71-19135	HEAT EXCHANGER	1
PG1	205	60-9275-1500	PRESSURE GAUGE, 1ST STG	1
PG2	206	60-9275-3000	PRESSURE GAUGE, 2ND STG	1
PGO	207	60-347	PRESSURE GAUGE, OIL	1
PGS	208	60-9275-400	PRESSURE GAUGE, SUCTION	1
PSO	209	76-704	PRESSURE SWITCH, OIL	1
PTD	210	76-14809	PRESSURE TRANSDUCER, DISCH.	1
PTS	211	76-13230	PRESSURE TRANSDUCER, SUCT.	1
RTD	212	138-5531	RTD	2
RVI	213	515-816-330	RELIEF VALVE, INLET	1
RV1	214	515-816-1050	RELIEF VALVE, 1ST STG	1
RV2	215	515-816-2100	RELIEF VALVE, 2ND STG	1
SS	216	A77-649	FILTER, Y STRAINER	1
SVU	217	315-276	SOLENOID VALVE, DVU	1
TW	218	138-10494	THERMOWELL	2
PR	219	116-19187	PRESSURE REGULATOR	1

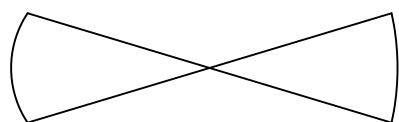
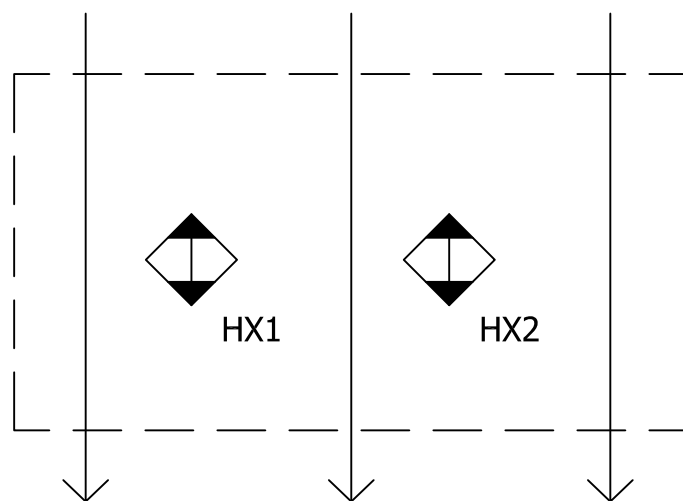
UNLESS OTHERWISE SPECIFIED DIMENSIONS ARE IN INCHES. TOLERANCES ARE: <table border="1"> <tr><td>DECIMAL</td><td>WELDS</td><td>± 1/32</td></tr> <tr><td>X ± .1</td><td>CHAMFERS</td><td>± 5</td></tr> <tr><td>XX ± .02</td><td>ANGLES</td><td>± 2</td></tr> <tr><td>XXX ± .005</td><td>CAST</td><td>± 1/8</td></tr> <tr><td colspan="2">FRACTIONS</td><td>± 1/16</td></tr> <tr><td colspan="3">THIRD ANGLE PROJECTION</td></tr> </table>	DECIMAL	WELDS	± 1/32	X ± .1	CHAMFERS	± 5	XX ± .02	ANGLES	± 2	XXX ± .005	CAST	± 1/8	FRACTIONS		± 1/16	THIRD ANGLE PROJECTION			CONTRACT NO. S/N 14183		RIX INDUSTRIES 4900 INDUSTRIAL WAY, BENICIA, CA 94510 ON SAN FRANCISCO BAY SINCE 1878	
	DECIMAL	WELDS	± 1/32																			
	X ± .1	CHAMFERS	± 5																			
	XX ± .02	ANGLES	± 2																			
XXX ± .005	CAST	± 1/8																				
FRACTIONS		± 1/16																				
THIRD ANGLE PROJECTION																						
<table border="1"> <tr><td>APPROVALS</td><td>DATE</td></tr> <tr><td>DRAWN JB</td><td>14/09/11</td></tr> <tr><td>CHECKED BPS</td><td>14/09/12</td></tr> <tr><td>APPROVED CJC</td><td>14/09/12</td></tr> </table>	APPROVALS	DATE	DRAWN JB	14/09/11	CHECKED BPS	14/09/12	APPROVED CJC	14/09/12	TITLE <h2 style="text-align: center;">FLOW SCHEMATIC</h2> 4VX2B-8.7		SIZE B CAGE CODE 28953 DWG NO 19144 SCALE NONE	REV - SHEET 1 OF 2										
APPROVALS	DATE																					
DRAWN JB	14/09/11																					
CHECKED BPS	14/09/12																					
APPROVED CJC	14/09/12																					
SIMILAR TO NONE	P/N G200-4VX2B-8.7																					

PROPRIETARY DRAWING

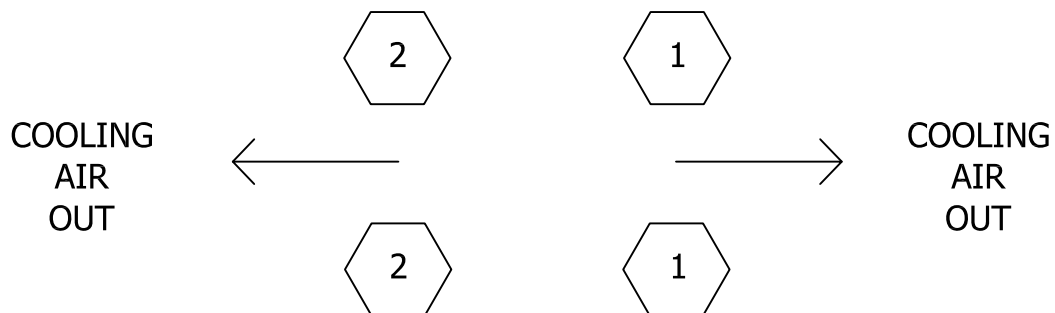
This drawing and the information and data contained herein are the confidential and proprietary property of RIX Industries and may not be used, copied, reproduced, or disclosed for any purpose, without the written permission of RIX Industries.



COOLING AIR IN



FAN



SYM	REF	P/N	DESCRIPTION	QTY
B	-	49-402	BREATHER	REF
DS	-	60-B3666-4	DIP STICK	REF
FAN	238	42-8097	FAN, COOLING	1
FO	-	49-403	FILTER, OIL	REF
HTR	241	82-10739	HEATER, CRANKCASE OIL	1
HX1,2	204	71-19135	HEAT EXCHANGER	1
PGO	207	60-347	PRESSURE GAUGE, OIL	REF
PO	-	A81-D3303	PUMP, OIL	REF
PSO	209	76-704	PRESSURE SWITCH, OIL	1
RVO	-	515-451	RELIEF VALVE, OIL	REF
SO	-	A77-8368	STRAINER, OIL	REF
TS	242	82-10740	THERMOSTAT	1
VS	243	976-68	VIBRATION SWITCH	1

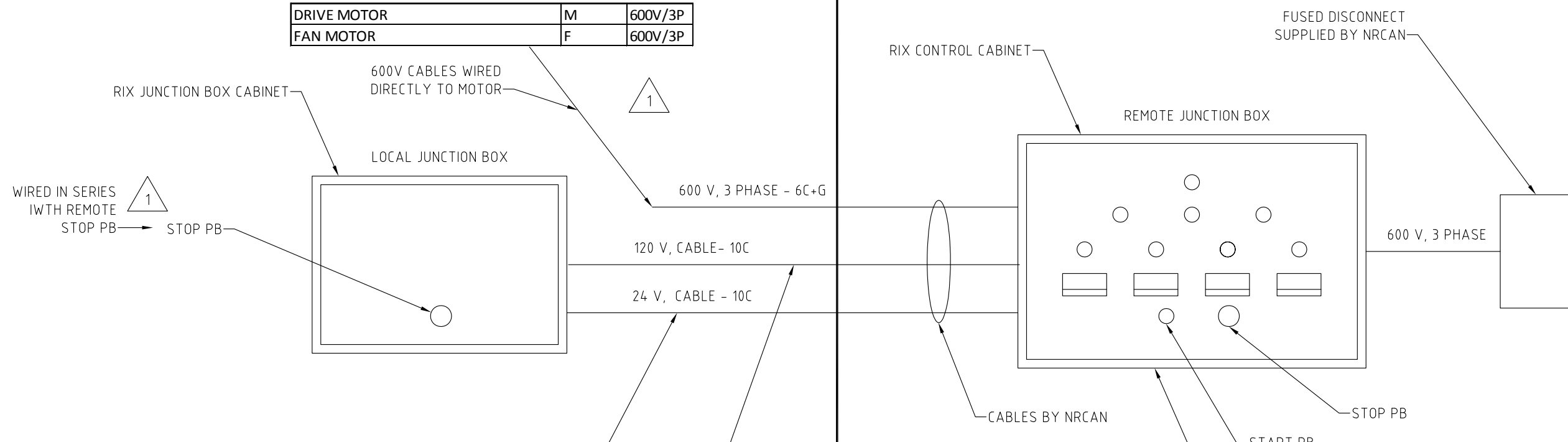
DRAWN	JB	14/09/11	RIX INDUSTRIES		
CHECKED	BPS	14/09/12	4900 INDUSTRIAL WAY, BENICIA, CA 94510		
			ON SAN FRANCISCO BAY SINCE 1878		
SIMILAR TO		SIZE	CAGE CODE	DWG NO	REV
		B	28953	19144	-
		SCALE	P/N	SHEET 2 OF 2	
		1/1	G200-4VX2B-8.7		

RevNo	Revision note	Date	Signature	Checked
1	REVISED PER PHONE MEETING WITH RIX	19 NOV 2014	SB	

LOCAL JUNCTION BOX OUTSIDE OF BUILDING 4

REMOTE JUNCTION BOX INSIDE OF BUILDING 4 HALLWAY

DRIVE MOTOR	M	600V/3P
FAN MOTOR	F	600V/3P



RTD, 1ST STAGE	RTD1	100PT
RTD, 2ND STAGE	RTD2	100PT
PRESSURE TRANSMITTER, SUCTION	PTS	24V
PRESSURE TRANSMITTER, DISCHARGE	PTD	24V

THERMOSTATE, OIL HEATER	TS/HTR	120V
PRESSURE SWITCH, OIL	PSO	120V
VIBRATION SWITCH	VS	120V
EMERGENCY STOP PB (new)	PB1	120V
SOLENOID VALVE, UNLOADER	SVU	120V

SIGNALS SENT TO NRCAN	
RTD, 1ST STAGE TEMPRATURE	4-20mA
RTD, 2ND STAGE TEMPERATURE	4-20mA
PRESSURE TRANSMITTER, SUCTION	4-20mA
PRESSURE TRANSMITTER, DISCHARGE	4-20mA
DRIVE MOTOR CURRENT (AMPS)	4-20mA

FAULT CONTACT N.O.	OUTPUT TO NRCAN
START PERMISSIVE CONTACT	INPUT FROM NRCAN
COMPRESSOR RUNNING CONTACT (new)	OUTPUT TO NRCAN (new)

**Canada**

**EngServ**

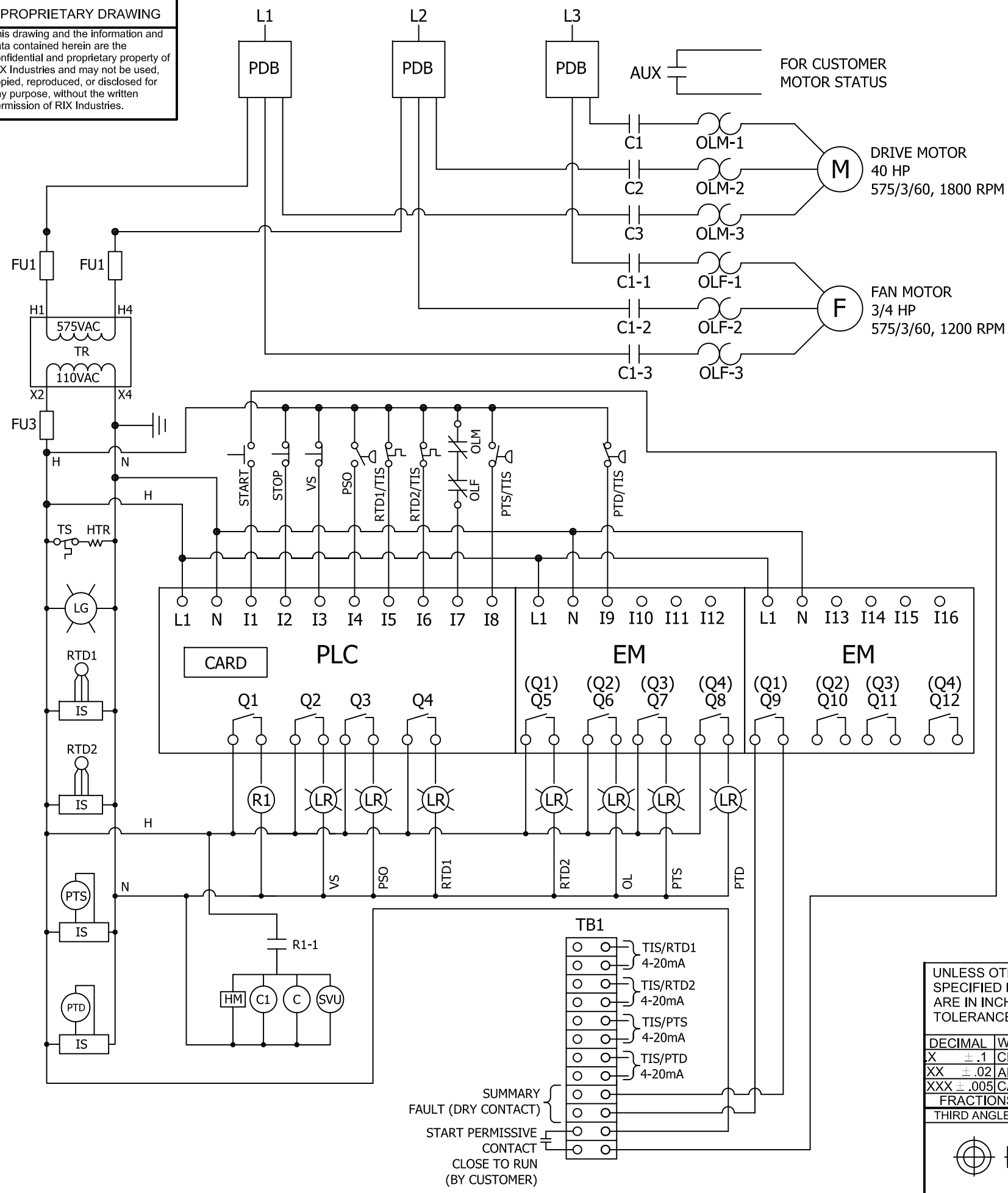
Natural Resources Canada  
 Ressources naturelles Canada  
 CANMET Energy Technology Center  
 Centre de la technologie de l'énergie de CANMET

CANMET Engineering Services Group

Itemref	Quantity	Title/Name, designation, material, dimension etc	Article No./Reference
Designed by S. Bethune	Checked by S. Bethune	Approved by - date XXX - 00/00/00	Filename P001617-XXX
NRCAN-CFF, DCSG			Date 13 NOV 2014
RIX COMP INTERFACE DIA			Scale 1:1
B-P001617-XXX			Edition 1
			Sheet 1/1

**PROPRIETARY DRAWING**  
 This drawing and the information and data contained herein are the confidential and proprietary property of RIX Industries and may not be used, copied, reproduced, or disclosed for any purpose, without the written permission of RIX Industries.

REVISION HISTORY			
REV	DESCRIPTION	DATE	APPROVED



SYM	REF	P/N	DESCRIPTION	QTY
AUX	436	76-7266	AUX CONTACT	1
C	408	76-10339	STARTER CONTACTOR, MAIN MOTOR	1
CARD	435	76-19188	PROGRAMMED MEMORY CARD	1
C1	407	76-8212	STARTER CONTACTOR, FAN MOTOR	1
EM	434	76-7001	EXPANSION MODULE	2
F	216	107-14901	FAN MOTOR	1
FU1	429	163-41	FUSE, PRIMARY, 3A, 600V, TIME DELAY	2
FU3	430	163-27	FUSE, SECONDARY, 6A, 500V, TIME DELAY	1
HM	411	113-10156	HOURLY METER	1
HTR	251	82-10739	HEATER, CRANKCASE OIL	1
IS	400	76-15185	INDICATION SWITCH/ PROCESSOR	4
LG	402	160-4397	LIGHT, GREEN, POWER ON	1
LR	401	160-4396	LIGHT, RED, FIRST OUT	7
M	215	107-19136	MAIN MOTOR	1
OLF	409	76-8647	OVERLOAD, FAN MOTOR	1
OLM	410	76-11734	OVERLOAD, MAIN MOTOR	1
PDB	437	138-17811	POWER DISTRIBUTION BLOCK	3
PLC	433	76-12529	PROGRAMMABLE LOGIC CONTROLLER	1
PSO	227	76-704	PRESSURE SWITCH, OIL	1
PTD	236	76-14809	PRESSURE TRANSDUCER, DISCHARGE	1
PTS	235	76-13230	PRESSURE TRANSDUCER, SUCTION	1
R1	413	76-1321	RELAY, DPDT	1
RTD1	234	138-14886	RTD, 1ST STG	1
RTD2	234	138-14886	RTD, 2ND STG	1
START	403	476-46	PUSHBUTTON START	1
STOP	404	476-41	PUSHBUTTON STOP	1
SVU	226	315-276	SOLENOID VALVE, UNLOADER	1
TR	412	185-14902	TRANSFORMER	1
TS	252	82-10740	THERMOSTAT, OIL HEATER	1
VS	231	976-68	VIBRATION SWITCH	1

UNLESS OTHERWISE SPECIFIED DIMENSIONS ARE IN INCHES. TOLERANCES ARE:		CONTRACT NO. S/N 14183	
DECIMAL	WELDS ± 1/32	APPROVALS	DATE
X ± .1	CHAMFERS ± 5	DRAWN JB	14/09/11
XX ± .02	ANGLES ± 2	CHECKED BPS	14/09/30
XXX ± .005	CAST ± 1/8	APPROVED CJC	14/10/01
FRACTIONS ± 1/16		QA	
THIRD ANGLE PROJECTION		SIMILAR TO	NONE

<b>RIX INDUSTRIES</b> 4900 INDUSTRIAL WAY, BENICIA, CA 94510 ON SAN FRANCISCO BAY SINCE 1878			
TITLE <b>ELECTRICAL SCHEMATIC</b>			
SIZE B	CAGE CODE 28953	DWG NO 19145	REV -
SCALE NONE	P/N G400-4VX2B-8.7	SHEET 1 OF 1	

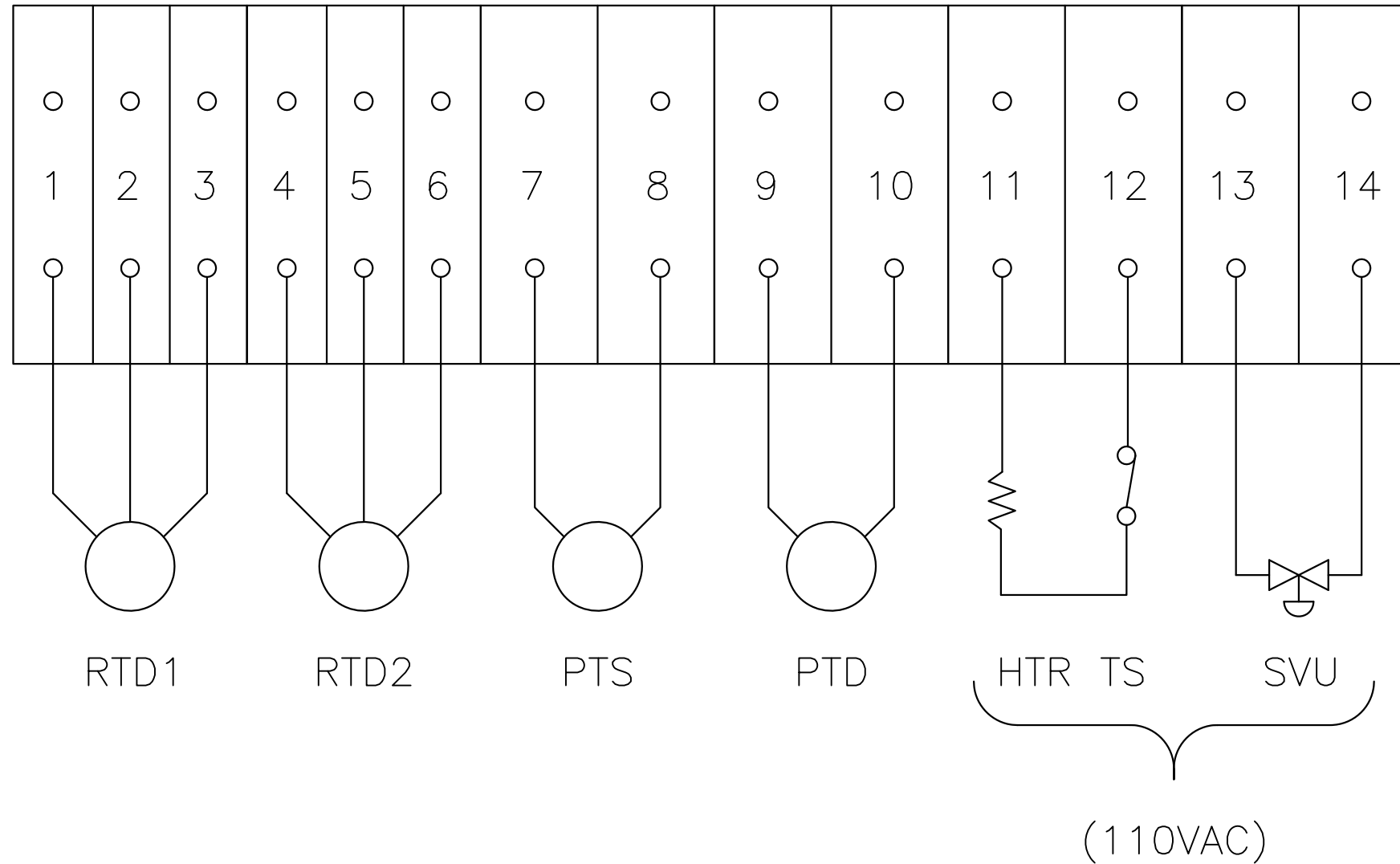
PROPRIETARY DRAWING


This drawing and the information and data contained herein are the confidential and proprietary property of RIX Industries and may not be used, copied, reproduced, or disclosed for any purpose, without the written permission of RIX Industries.

REVISION HISTORY

REV	DESCRIPTION	DATE	APPROVED
-----	-------------	------	----------

CUSTOMER CONNECTIONS



CONTRACT NO. N/A			 <b>RIX INDUSTRIES</b> 4900 INDUSTRIAL WAY, BENICIA, CA 94510 ON SAN FRANCISCO BAY SINCE 1878		
DRAWN DY 14/09/25			TITLE		
CHECKED JB 14/09/25			<b>JUNCTION BOX WIRING</b>		
APPROVED CJC 14/09/25			SIZE	CAGE CODE	DWG NO
SIMILAR TO N/A			B	28953	19202
			SCALE	P/N	SHEET 1 OF 1
			N/A		