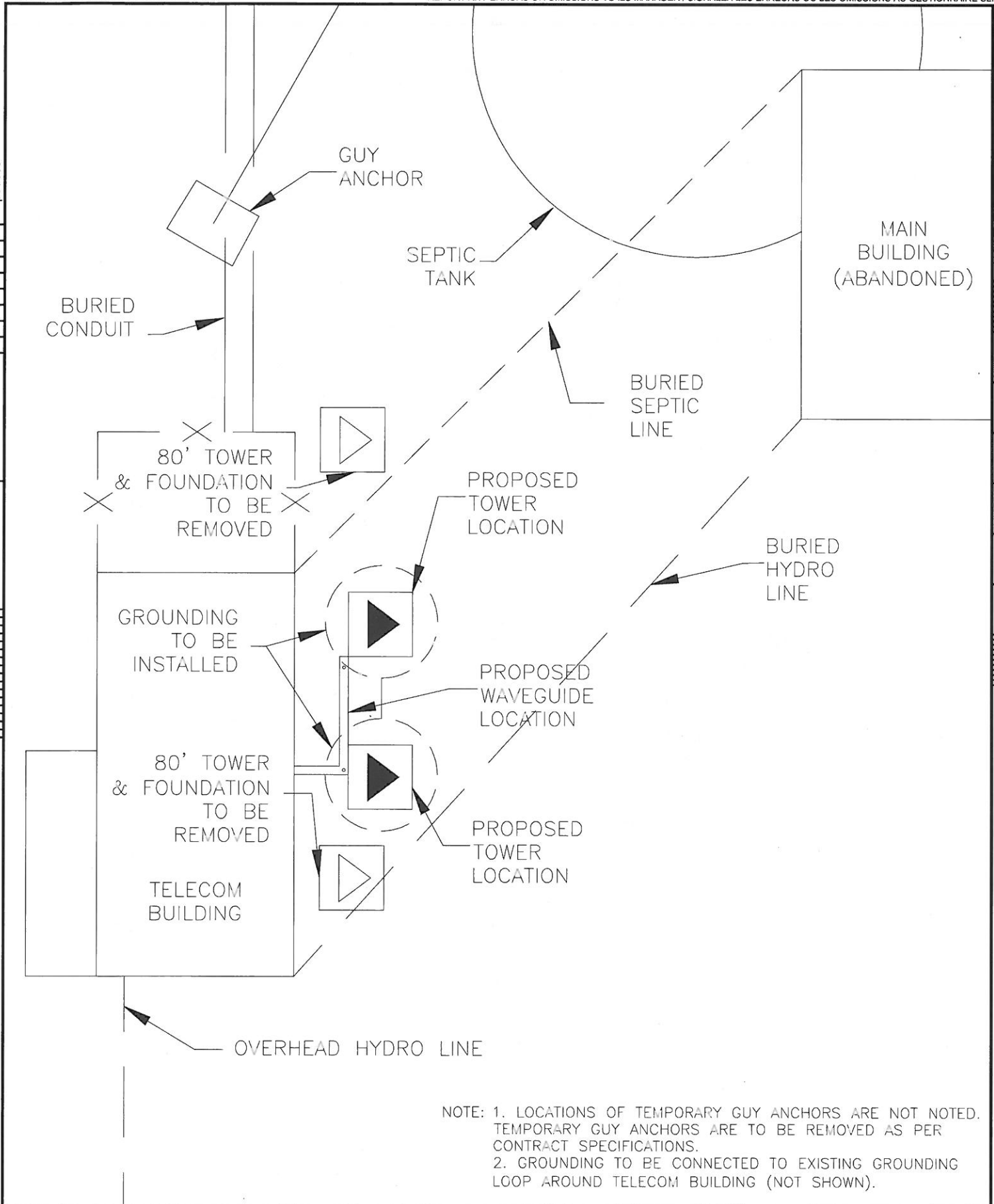


inches 0 1 2 3 4

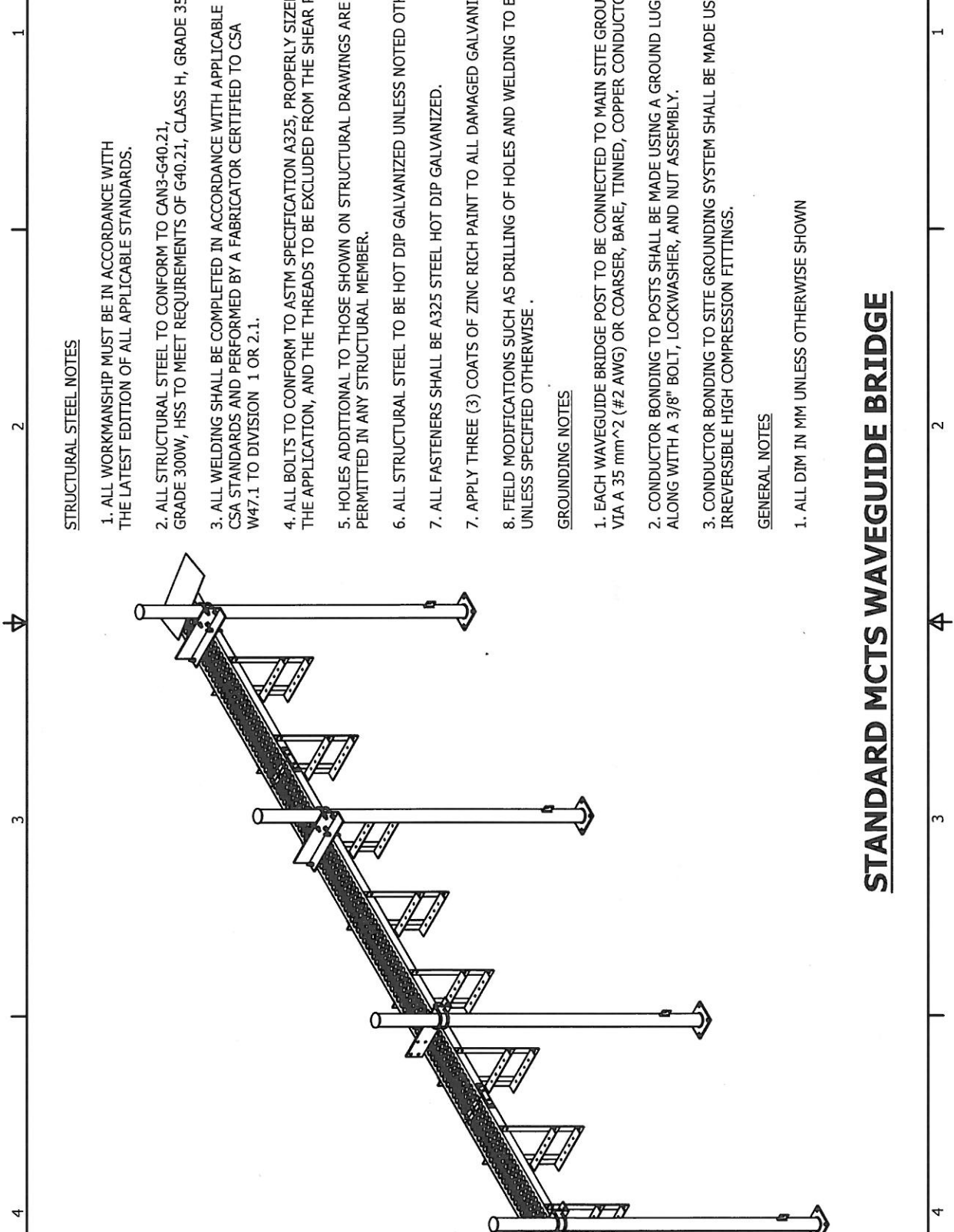
millimeters 0 1 2 3 4 5 6 7 8



NOTE: 1. LOCATIONS OF TEMPORARY GUY ANCHORS ARE NOT NOTED. TEMPORARY GUY ANCHORS ARE TO BE REMOVED AS PER CONTRACT SPECIFICATIONS.
 2. GROUNDING TO BE CONNECTED TO EXISTING GROUNDING LOOP AROUND TELECOM BUILDING (NOT SHOWN).

Fisheries and Oceans Canada Canadian Coast Guard	Pêches et Océans Canada Garde côtière Canadienne	Asset - Actif	designed - conception BH 2016-05-16		
		CARDINAL DGPS CARDINAL, ONTARIO		approved - approuvé APPROVED 2016-05-16	
CCG ref. no. - no. réf. GCC EWT-8055-106	scale - échelle NTS	Drawing - Dessin TOWER REPLACEMENTS PROPOSED LOCATIONS	drawing no. - no. dessin TBD	sheet-feuille 01/01	rev 0

File / Fichier: CARDINAL DRAWING.DWG - Printed / Imprimé: 2016/05/18 10:42 8 1/2" X 11"



STRUCTURAL STEEL NOTES

1. ALL WORKMANSHIP MUST BE IN ACCORDANCE WITH THE LATEST EDITION OF ALL APPLICABLE STANDARDS.
2. ALL STRUCTURAL STEEL TO CONFORM TO CAN3-G40.21, GRADE 300W, HSS TO MEET REQUIREMENTS OF G40.21, CLASS H, GRADE 350W.
3. ALL WELDING SHALL BE COMPLETED IN ACCORDANCE WITH APPLICABLE CSA STANDARDS AND PERFORMED BY A FABRICATOR CERTIFIED TO CSA W47.1 TO DIVISION 1 OR 2.1.
4. ALL BOLTS TO CONFORM TO ASTM SPECIFICATION A325, PROPERLY SIZED FOR THE APPLICATION, AND THE THREADS TO BE EXCLUDED FROM THE SHEAR PLANE.
5. HOLES ADDITIONAL TO THOSE SHOWN ON STRUCTURAL DRAWINGS ARE NOT PERMITTED IN ANY STRUCTURAL MEMBER.
6. ALL STRUCTURAL STEEL TO BE HOT DIP GALVANIZED UNLESS NOTED OTHERWISE.
7. ALL FASTENERS SHALL BE A325 STEEL HOT DIP GALVANIZED.
7. APPLY THREE (3) COATS OF ZINC RICH PAINT TO ALL DAMAGED GALVANIZED SURFACES.
8. FIELD MODIFICATIONS SUCH AS DRILLING OF HOLES AND WELDING TO BE AVOIDED, UNLESS SPECIFIED OTHERWISE.

GROUNDING NOTES

1. EACH WAVEGUIDE BRIDGE POST TO BE CONNECTED TO MAIN SITE GROUND SYSTEM VIA A 35 mm² (#2 AWG) OR COARSER, BARE, TINNED, COPPER CONDUCTOR.
2. CONDUCTOR BONDING TO POSTS SHALL BE MADE USING A GROUND LUG ALONG WITH A 3/8" BOLT, LOCKWASHER, AND NUT ASSEMBLY.
3. CONDUCTOR BONDING TO SITE GROUNDING SYSTEM SHALL BE MADE USING IRREVERSIBLE HIGH COMPRESSION FITTINGS.

GENERAL NOTES

1. ALL DIM IN MM UNLESS OTHERWISE SHOWN

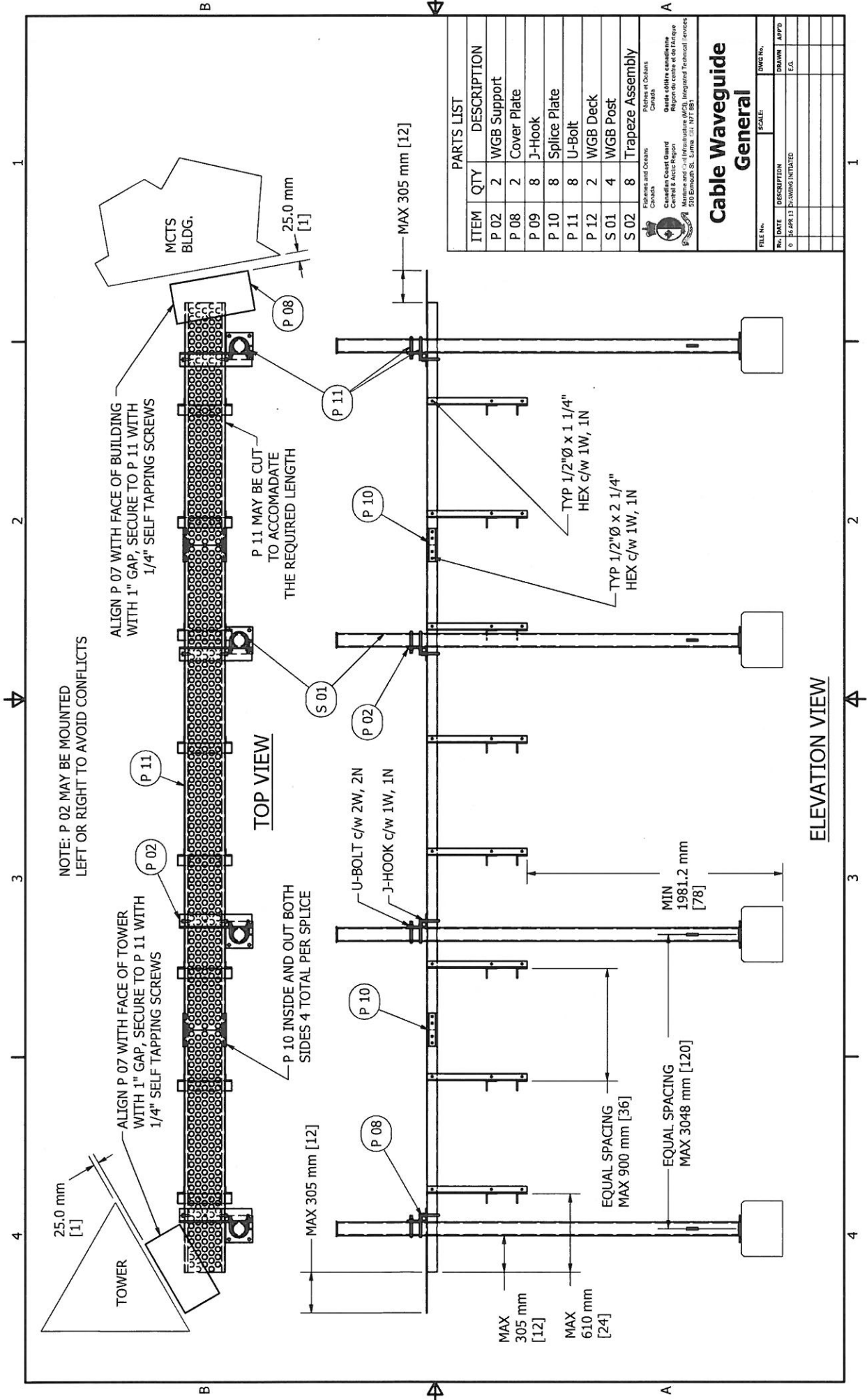
STANDARD MCTS WAVEGUIDE BRIDGE

General Waveguide Bridge Parts List

Part	Name	Quantity	L = required length of waveguide bridge in ft (building to tower)
S 01	Waveguide Post	$(L-4)/10 + 1$	
S 02	Trapeze Assembly	$(L-6)/3 + 1$	
P 01	Trapeze Hanger	2 * QTY S 02	*All Decimals Rounded up*
P 02	WGB Support	QTY S 01	
P 03	Trapeze Arm	2 * QTY S 02	
P 04	Support Post	QTY S 01	
P 05	Foot Plate	QTY S 01	
P 06	Ground Attachment	QTY S 01	
P 07	Top Plate	QTY S 01	
P 08	Cover Plate	2	
P 09	J-Hook c/w 1W, 1N	2 * QTY S 01	
P 10	Splice Plate	2 * QTY P 12	
P 11	U-Bolt c/w 2W, 2N	2 * QTY S 01	
P 12	WGB Deck	L/12	
	1/2"Ø x 1 1/4" Hex c/w 1W, 1N	6 * QTY S 02 + 10%	
	1/2"Ø x 2 1/4" Hex c/w 1W, 1N	2 * QTY P 10 + 10%	
	5/8"Ø Nut and Flat Washer	6 * QTY S 01 + 10%	

Sample Standard Parts List (10% Hardware Overage Included)

Length	12	Length	16	Length	25	Length	36
Part	Quantity	Part	Quantity	Part	Quantity	Part	Quantity
S 01	2	S 01	3	S 01	4	S 01	5
S 02	3	S 02	5	S 02	8	S 02	11
P 01	6	P 01	10	P 01	16	P 01	22
P 02	2	P 02	3	P 02	4	P 02	5
P 03	6	P 03	10	P 03	16	P 03	22
P 04	2	P 04	3	P 04	4	P 04	5
P 05	2	P 05	3	P 05	4	P 05	5
P 06	2	P 06	3	P 06	4	P 06	5
P 07	2	P 07	3	P 07	4	P 07	5
P 08	2	P 08	3	P 08	4	P 08	5
P 09	4	P 09	6	P 09	8	P 09	10
P 10	0	P 10	4	P 10	8	P 10	8
P 11	4	P 11	6	P 11	8	P 11	10
P 12	1	P 12	2	P 12	3	P 12	3
Hex 1 1/4	20	Hex 1 1/5	33	Hex 1 1/6	53	Hex 1 1/7	73
Hex 2 1/4	0	Hex 2 1/5	9	Hex 2 1/6	18	Hex 2 1/7	18
5/8 N&W	14	5/8 N&W	20	5/8 N&W	27	5/8 N&W	33



ITEM	QTY	DESCRIPTION
P 02	2	WGB Support
P 08	2	Cover Plate
P 09	8	J-Hook
P 10	8	Splice Plate
P 11	8	U-Bolt
P 12	2	WGB Deck
S 01	4	WGB Post
S 02	8	Trapeze Assembly

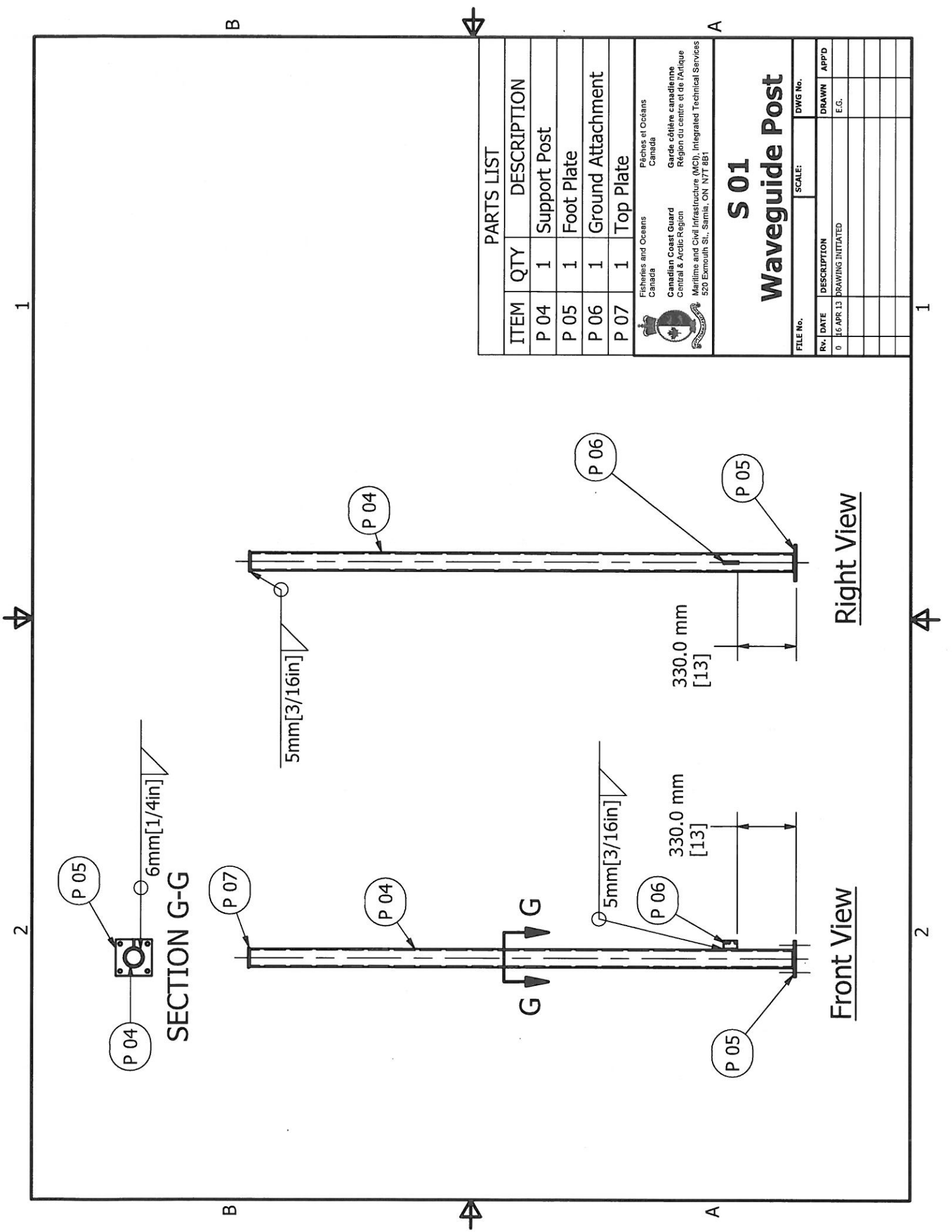
Filinvest and Oceana
 Canada
 Christian Coast Guard
 1000
 Marine and Civil Infrastructure (MCI) Integrated Technical Services
 510 Ernauld St. Suite 101 NPT 8B1

Cable Waveguide
General

FILE No. _____ DWG No. _____
 Rn. DATE DESCRIPTION DRAWN APPD
 0 30 APR 13 DRAWING INITIATED E.G.

ELEVATION VIEW

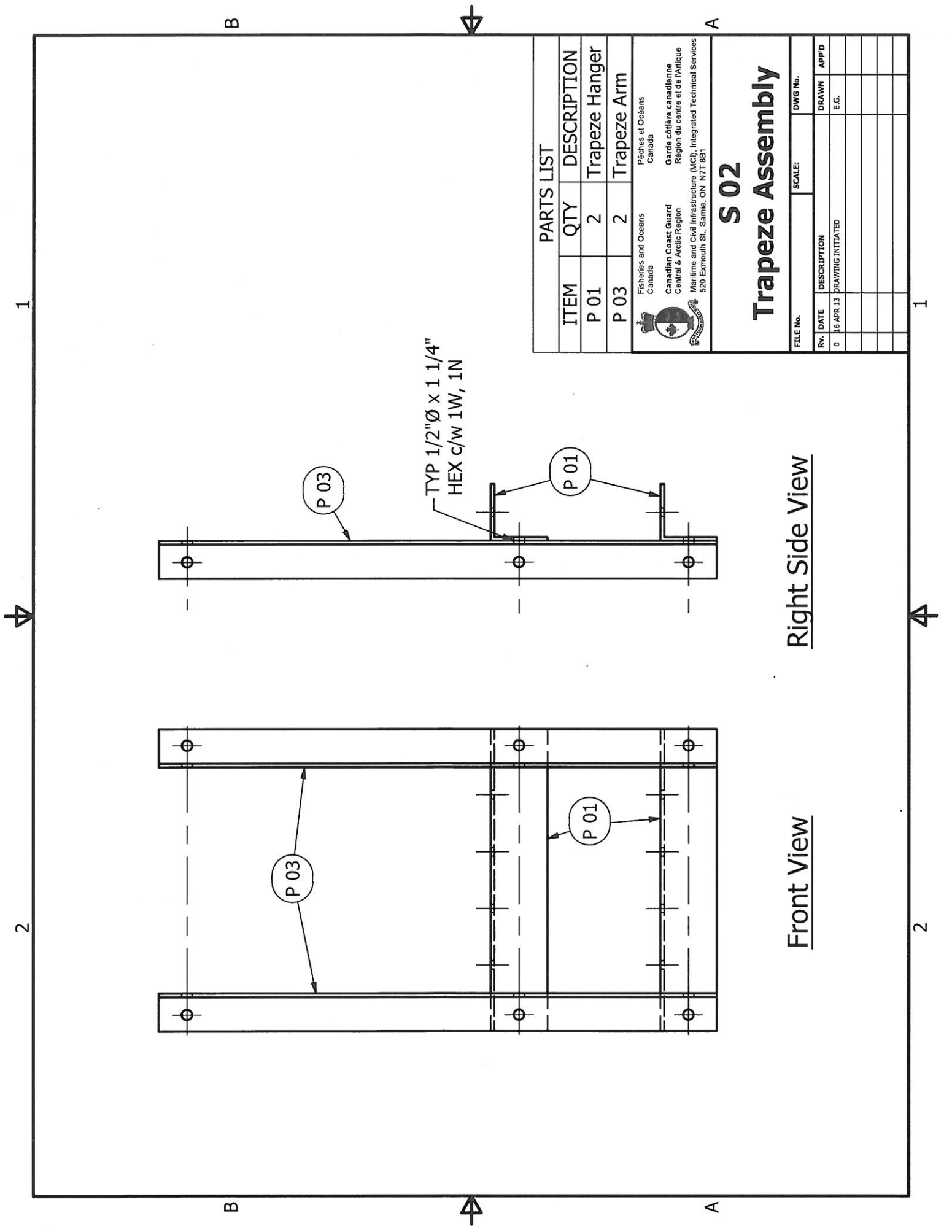
TOP VIEW




PARTS LIST		
ITEM	QTY	DESCRIPTION
P 04	1	Support Post
P 05	1	Foot Plate
P 06	1	Ground Attachment
P 07	1	Top Plate

Fisheries and Oceans
 Canada
 Canadian Coast Guard
 Central & Arctic Region
 Gardie côtière canadienne
 Région du centre et de l'Arctique
 Maritime and Civil Infrastructure (MCI), Integrated Technical Services
 520 Esplanade St., Sarnia, ON N7T 8B1

S 01		FILE No.	DWG No.	
Waveguide Post		SCALE:		
Rv.	DATE	DESCRIPTION	DRAWN	APPD
0	16 APR 13	DRAWING INITIATED	E.G.	



PARTS LIST	
ITEM	QTY DESCRIPTION
P 01	2 Trapeze Hanger
P 03	2 Trapeze Arm


 Fisheries and Oceans
 Canada
 Canadian Coast Guard
 Central & Arctic Region
 Maritimes and Civil Infrastructure (MCI), Integrated Technical Services
 520 Esplanade St., Sarnia, ON N7T 8B1

S 02

Trapeze Assembly

FILE No.	SCALE:	DWG No.
RV. DATE	DESCRIPTION	DRAWN APP'D
0	16 APR 13	DRAWING INITIATED
		E.G.

Right Side View

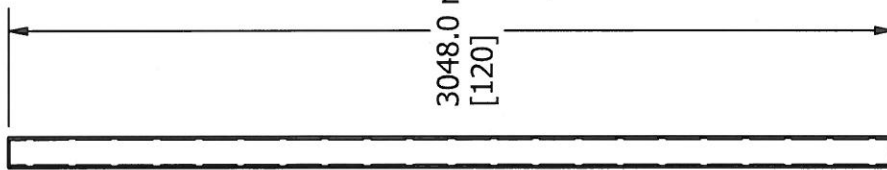
Front View

1

HSS 102x6.4 x 3658 lg
WEIGHT: 85kg

Ø102.0 mm
[4]

Top View



Front View

B



A

B



A



Fisheries and Oceans
Canada
Canadian Coast Guard
Central & Arctic Region
Maritime and Civil Infrastructure (MCI), Integrated Technical Services
520 Esplanade St., Sarnia, ON N7T 8B1

Pêches et Océans
Canada
Garde côtière canadienne
Région du centre et de l'Arctique
Maritime and Civil Infrastructure (MCI), Integrated Technical Services
520 Esplanade St., Sarnia, ON N7T 8B1

P 04

Support Post

FILE No.	SCALE:	DWG No.		
Rv.	DATE	DESCRIPTION	DRAWN	APPD
0	16 APR 13	DRAWING INITIATED	E.G.	

1

2



1

2

B

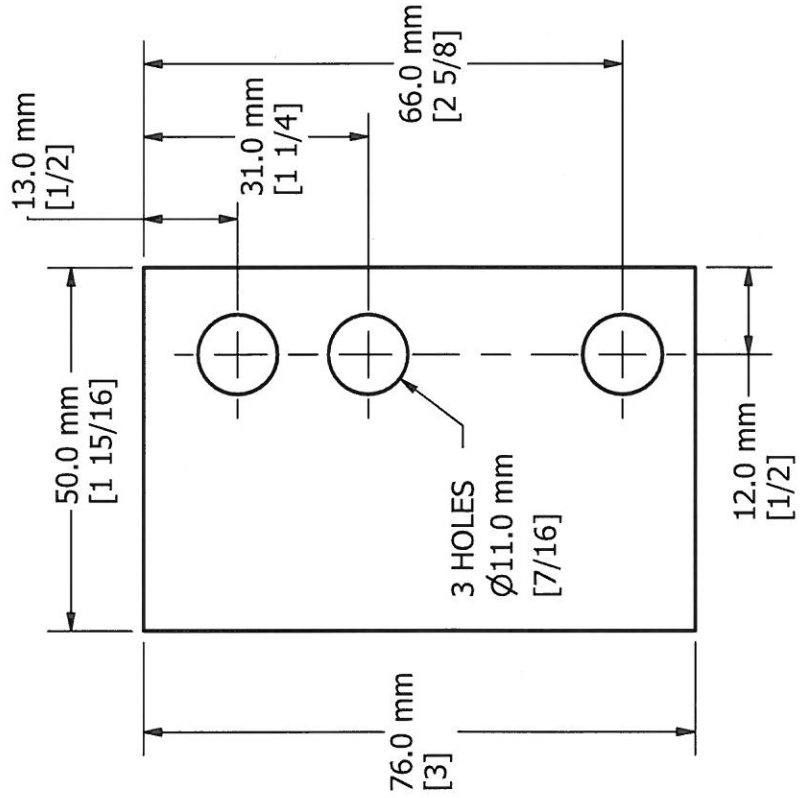
B



A

A

FB 50 x 5 x 76 lg
WEIGHT: 0.2kg



Left Side View



Fisheries and Oceans
Canada
Canadian Coast Guard
Central & Arctic Region
Maritime and Civil Infrastructure (MC), Integrated Technical Services
520 Esplanade St., Sarnia, ON N7T 8B1

Pêches et Océans
Canada
Garde côtière canadienne
Région du centre et de l'Arctique
Maritime and Civil Infrastructure (MC), Integrated Technical Services
520 Esplanade St., Sarnia, ON N7T 8B1

P 06

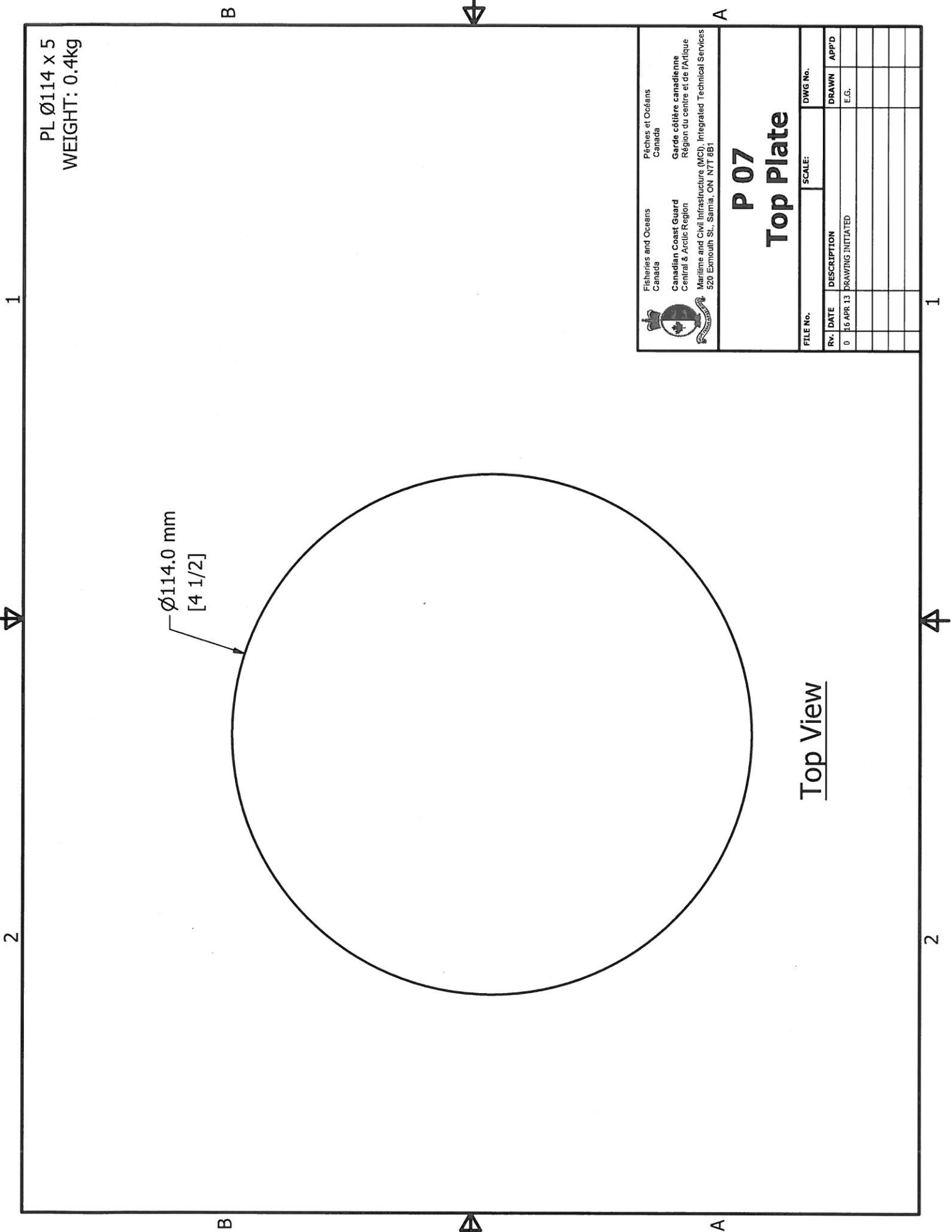
Ground Attachment

FILE No.	SCALE:	DWG No.		
RV.	DATE	DESCRIPTION	DRAWN	APP'D
0	16 APR.13	DRAWING INITIATED		
			E.G.	

1

2






PL Ø114 x 5
WEIGHT: 0.4kg

Ø114.0 mm
[4 1/2]

Top View

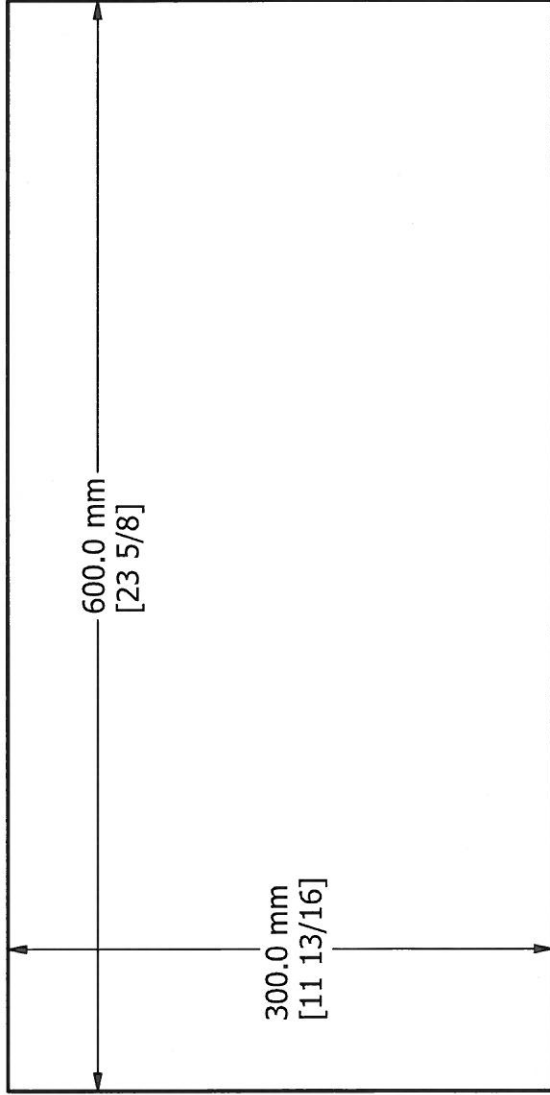
 Fisheries and Oceans Canada	Pêches et Océans Canada	Canadian Coast Guard Central & Arctic Region		Garde côtière canadienne Région du centre et de l'Arctique	
		Maritime and Civil Infrastructure (MCI), Integrated Technical Services 520 Exmouth St., Sarnia, ON N7T 6B1		Maritimes and Civil Infrastructure (MCI), Integrated Technical Services 520 Exmouth St., Sarnia, ON N7T 6B1	
FILE No.		SCALE:		DWG No.	
RV.	DATE	DESCRIPTION	DRAWN	APP'D	E.G.
0	15 APR 13	DRAWING INITIATED	E.G.	E.G.	E.G.

P 07
Top Plate

1

2

PL 600x300x5
WEIGHT: 7kg



Top View

B



B



A

A



Fisheries and Oceans
Canada

Canadian Coast Guard
Central & Arctic Region

Pêches et Océans
Canada

Garde côtière canadienne
Région du centre et de l'Arctique

Maritime and Civil Infrastructure (MC), Integrated Technical Services
520 Exmouth St., Sarnia, ON N7T 8E1

P 08

Cover Plate

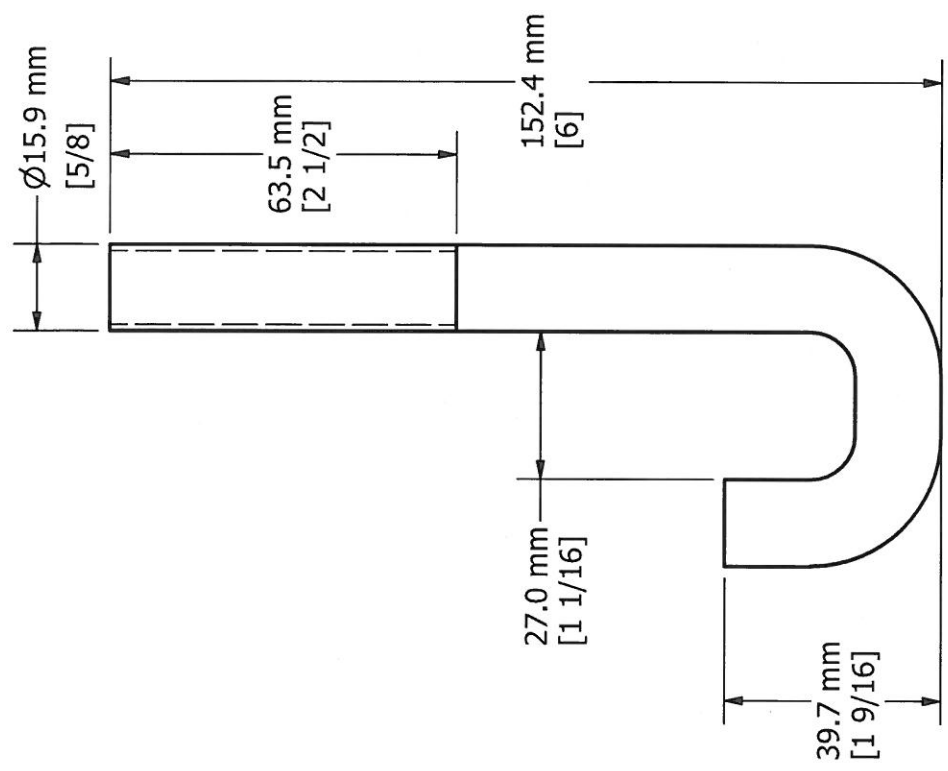
FILE No.	SCALE:	DWG No.		
RV.	DATE	DESCRIPTION	DRAWN	APP'D
0	16 APR 13	DRAWING INITIATED		
			E.G.	

1



2



Ø5/8 J-HOOK
WEIGHT: 0.3kg



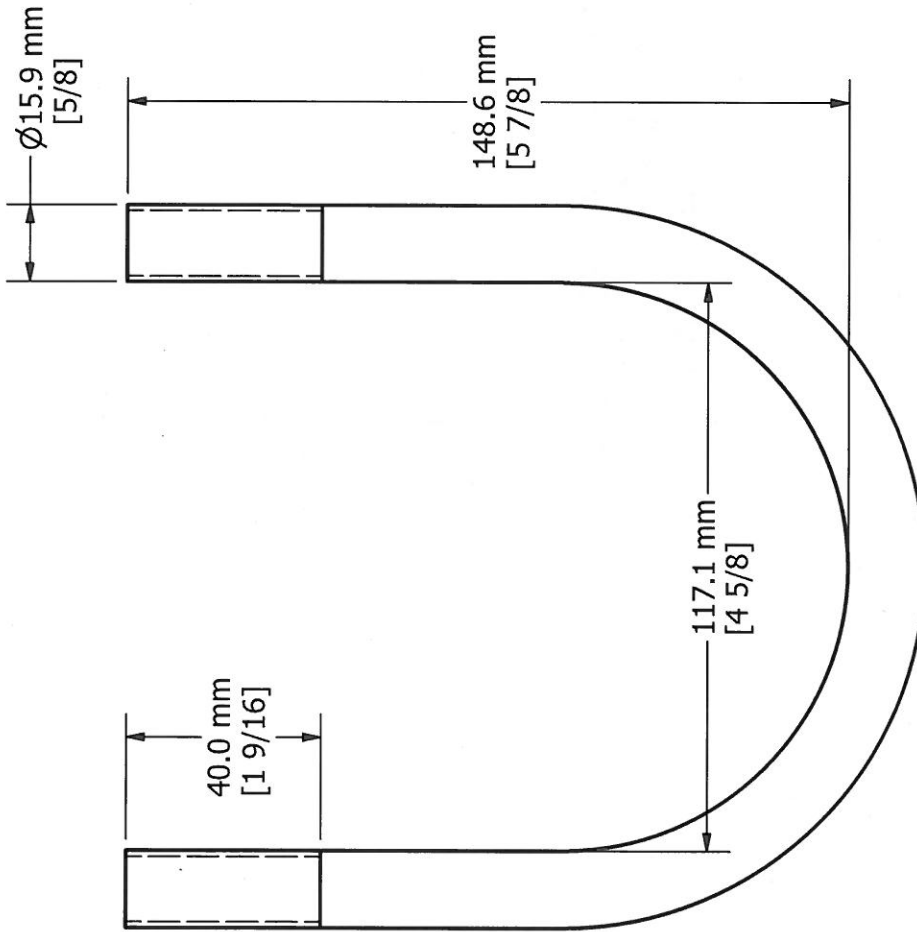
Front View


 Fisheries and Oceans
Canada
 Canadian Coast Guard
Central & Arctic Region

 Pêches et Océans
Canada
 Garde côtière canadienne
Région du centre et de l'Atlantique
 Maritime and Civil Infrastructure (MCI), Integrated Technical Services
520 Exmouth St., Sarnia, ON N7T 8B1

P 09
J-Hook

FILE No.	SCALE:	DWG No.		
Rv.	DATE	DESCRIPTION	DRAWN	APP'D
0	16 APR.13	DRAWING INITIATED	E.G.	

Ø5/8 U-BOLT
WEIGHT: 0.6kg



Front View



Fisheries and Oceans
Canada
Canadian Coast Guard
Central & Arctic Region

Pêches et Océans
Canada

Garde côtière canadienne
Région du centre et de l'Arctique
Maritime and Civil Infrastructure (MC), Integrated Technical Services
520 Exmouth St., Sarnia, ON N7T 8B1

P 11
Custom U-Bolt

FILE No.	SCALE:	DWG No.		
RV.	DATE	DESCRIPTION	DRAWN	APP'D
0	16 APR 13	DRAWING INITIATED	E.G.	

1

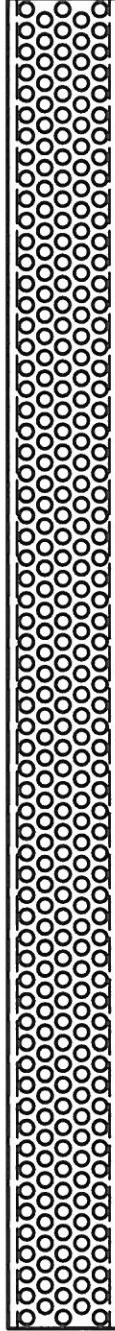
2

FISHER LUDLOW SHUR GRIP 11ga
 305(w)x76(h)x3658(lg)
 MAT'L: STEEL
 WEIGHT: 34kg
 FINISH: H.R.P.O.

B

B

76.0 mm
 [3]



25.4 mm
 [1]

STOCK
 LENGTH
 3658.0 mm
 [144]

Top View



Fisheries and Oceans
 Canada

Canadian Coast Guard
 Central & Arctic Region

Pêches et Océans
 Canada
 Garde côtière canadienne
 Région du centre et de l'Arctique
 Maritime and Civil Infrastructure (MCI), Integrated Technical Services
 520 Esplanade St., Sarnia, ON N7T 8B1

P 12

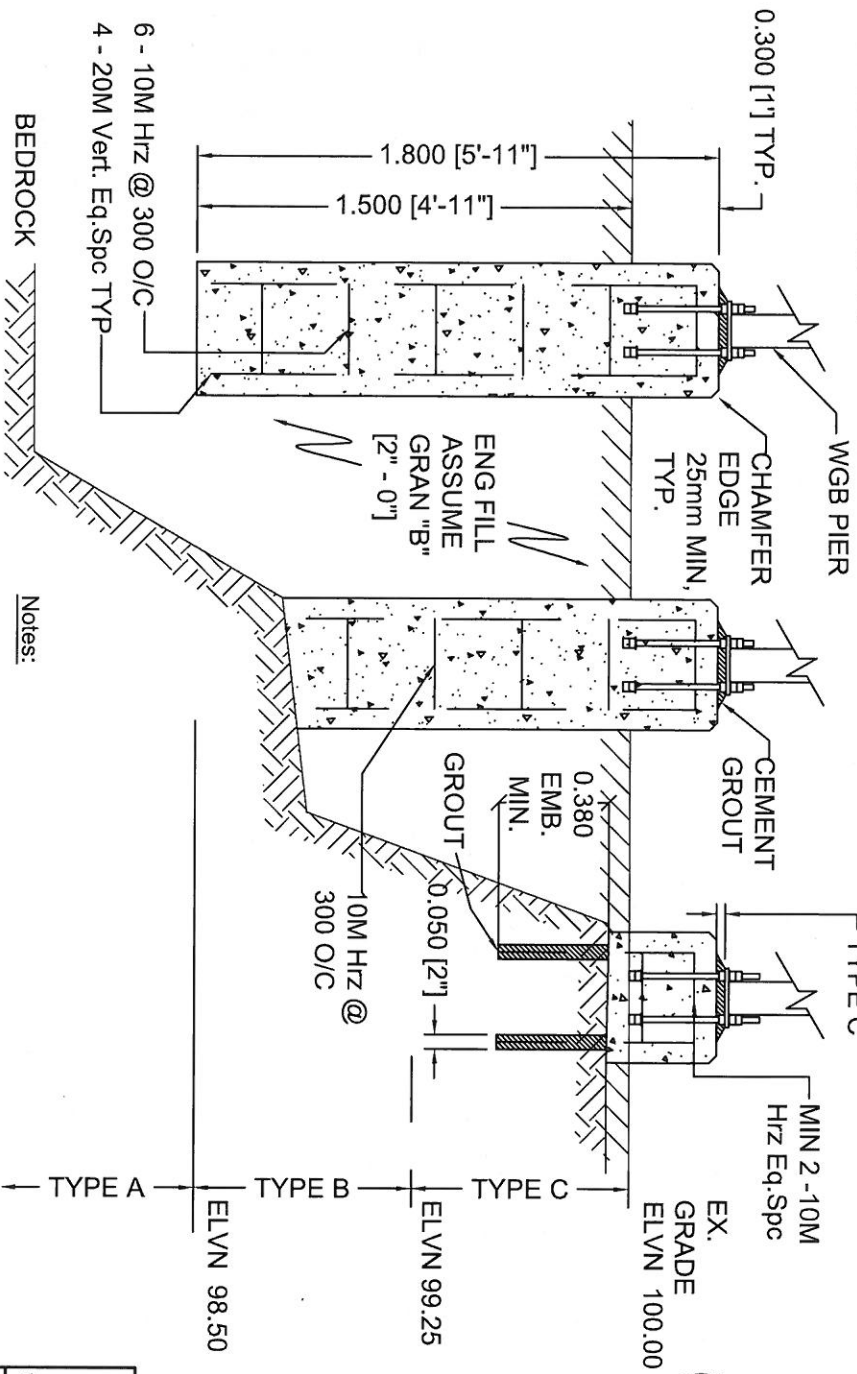
WGB DECK

FILE No.	SCALE:	DWG No.		
RV.	DATE	DESCRIPTION	DRAWN	APP'D
0	16 APR.13	DRAWING INITIATED	E.G.	

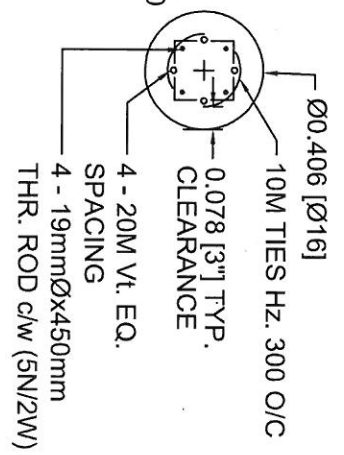
1

2

PROFILE VIEW



PLAN VIEW



CABLEWAY GUIDE PIERS

Notes:

Piers shall be cast to a depth of 1.5m below ex. grade (Type A). Where bedrock is encountered at an elevation of less than 1.5m the configuration of the pier shall be amended to Type B or C depending upon the depth to bedrock.

Reinforcement: Deformed bars as per CSA G30.18 M92, Fy 400 Mpa. Fabrication, placement, cover, and support as per CSA A23. GROUT: SIKA MBED or equal

Concrete: Quikrete 5000 or equal HES

Fisheries and Oceans
Canada

Canadian Coast Guard
Central & Arctic Region

Maritime and Civil Infrastructure (MCI), Integrated Technical Services
520 Esplanade St. Sarris, ON N7T 8B1

Pêches et Océans
Canada

Garde côtière canadienne
Région du centre et de l'Arctique

GENERAL WGB FOUNDATION PIER LAYOUT

FILE No.:	U/A	SCALE:	N.T.S.	DWG No.	13
Rv.	DATE	DESCRIPTION		DRAWN	APPD.
0	09 APR 12	DRAWING INITIATED.		D.E.L.	R.M.
1	17 APR 13	TITLE MODIFIED		E.G.	

Maxtower
COMPANY LIMITED

FILE 8052-519

5 EDMONDSON ST. - P.O. BOX 277 - BRANTFORD, ONT. N3T 5M8 - PHONE (519) 752-6501 - FAX (519) 752-4160

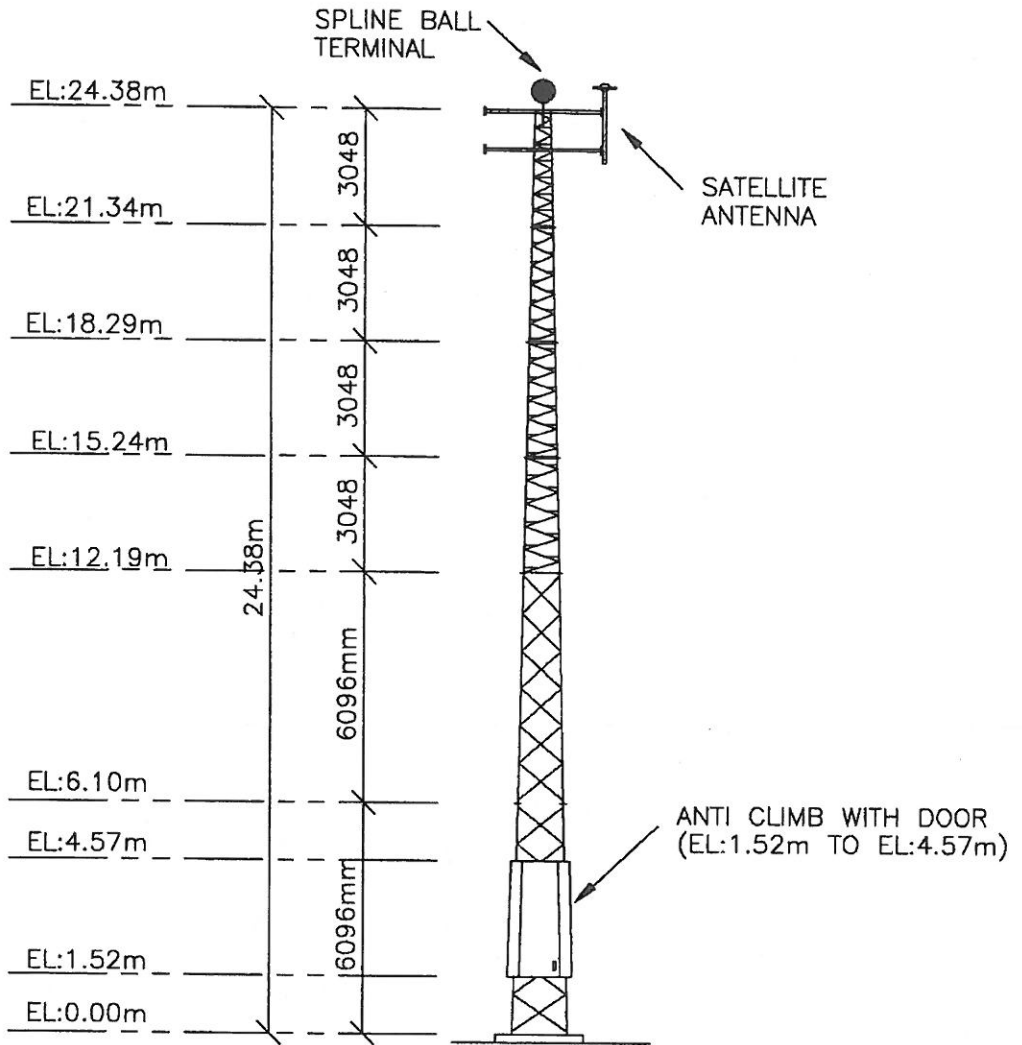
CANADIAN COAST GUARD
EDWARDSBURG TOWNSHIP
24.38m MTAMD30 TOWER (80L100)
DRAWING NUMBER: 95113

GENERAL NOTES:

- 1/ TOWER AND ACCESSORIES DESIGNED TO CAN/CSA-S37-M86 FOR:
WIND=390 Pa WITH CLASS II ICE.
- 2/ TOWER FOUNDATIONS DESIGNED TO CAN/CSA-S37-M86 FOR:
 - a) SOIL BEARING 190 kPa.
 - b) CONCRETE STRENGTH TO 25 MPa.- 28 DAYS.
 - c) 5% ENTRAINED AIR IN BASE PIER.
 - d) COMPACTED BACKFILL TO 95% PROCTOR DENSITY.
- 3/ ALL MATERIAL TO BE CSA GRADE 40.21 300W.
- 4/ ALL WELDING TO CWB APPROVED PROCEDURES CSA-W47.1-83
- 5/ ALL MATERIAL TO BE HOT DIPPED GALVANIZED TO CSA-G164-M90 AFTER FABRICATION.
- 6/ UNLESS OTHERWISE SPECIFIED ALL BOLTS TO BE:
 - a) ASTM GRADE A325.
 - b) HOT DIPPED GALVANIZED.

DC Pabeluter
11/7/95

LEG SIZE	60mm O.D. x 6.35mm H.S.S.	60mm O.D. x 4.78mm H.S.S.	35mm DIA. BARDIA.	32mm BARDIA.	29mm BARDIA.	25mm BARDIA.
BRACING SIZE	32 x 32 x 3mm L	32 x 32 x 3mm L	19mm DIA. BARDIA.	16mm DIA. BARDIA.	14mm DIA. BARDIA.	13mm DIA. BARDIA.
TOWER WIDTH	1422mm x 1168mm	1168mm x 914mm	914 x 787mm	787 x 660mm	660 x 533mm	533 x 406mm
SECTION NUMBER	KDA10-20	KDA8-20	WA6-10	WA5-10	WA4-10	WA3-10T
COLOUR	ORANGE	ORANGE	WHITE	ORANGE	WHITE	ORANGE



P. C. [Signature]
 11/7/95
 PROFESSIONAL ENGINEER
 CIVIL
 BRANTFORD, ONTARIO N5T 5M8
 TEL (519) 752-4180

Maxtower COMPANY LIMITED
 5 EDMONDSON ST., P.O. BOX 277
 BRANTFORD, ONTARIO N5T 5M8
 FAX (519) 752-4180 TEL (519) 752-6501

CANADIAN COAST GUARD
 EDWARDSBURG TOWNSHIP

TOWER & ANTENNA PROFILE FOR
 24.38m MTAMD30 TOWER (80L100)

DRAWING NUMBER:

95113

SHEET 1 OF 2

DATE: SEPT. 7, 1995

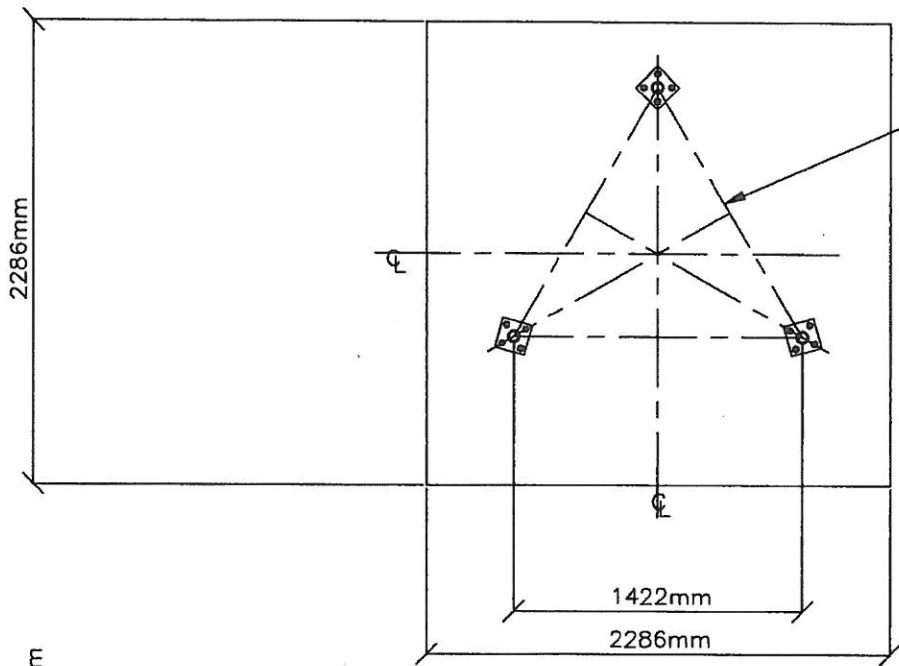
SCALE: 1=192

DRAWN BY: D. VAN EVERY

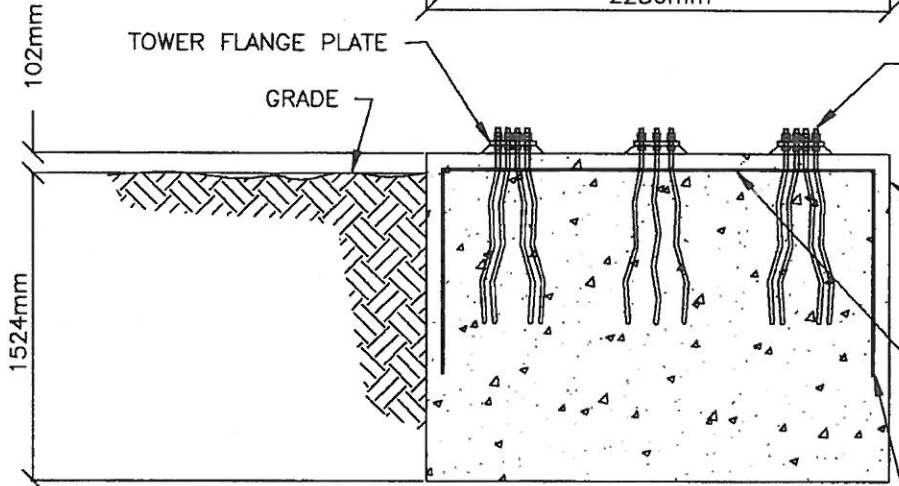
CHECKED BY:

APPROVED BY:

REVISION:



TOWER



TOWER FLANGE PLATE

GRADE

12-16mm DIA. x 762mm LONG WILLIAMS PIGTAILS.

76mm MIN. CONCRETE COVER (TYPICAL)

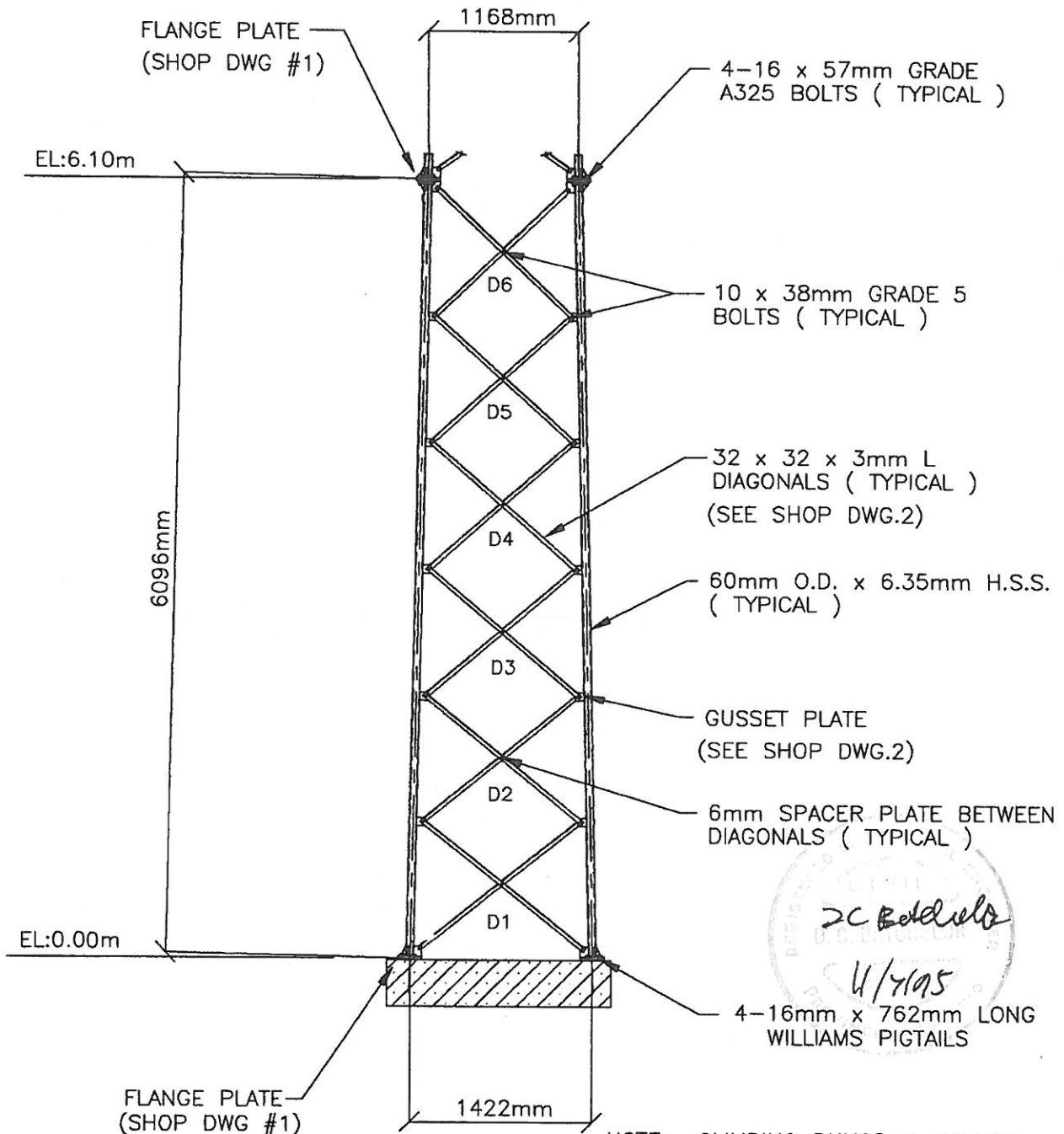
HORIZONTAL: 152 x 152 x 4.88mm WWF STEEL MESH (TOP ONLY)

VERTICAL: 152 x 152 x 4.88mm WWF STEEL MESH FROM HORIZONTAL DOWN 1372mm (4-SIDES)

D C P... 11/7/95

Maxtower COMPANY LIMITED 5 EDMONDSON ST., P.O. BOX 277 BRANTFORD, ONTARIO N3T 5M8 FAX(519)752-4160 TEL(519)752-6501	DATE: SEPT. 7, 1995
	SCALE: 1=36
CANADIAN COAST GUARD EDWARDSBURG TOWNSHIP BASE FOUNDATION FOR 24.38m MTAMD30 TOWER (80L100)	DRAWN BY: D. VAN EVERY
	CHECKED BY:
	APPROVED BY:
	REVISION:
DRAWING NUMBER: 95113	SHEET 2 OF 2

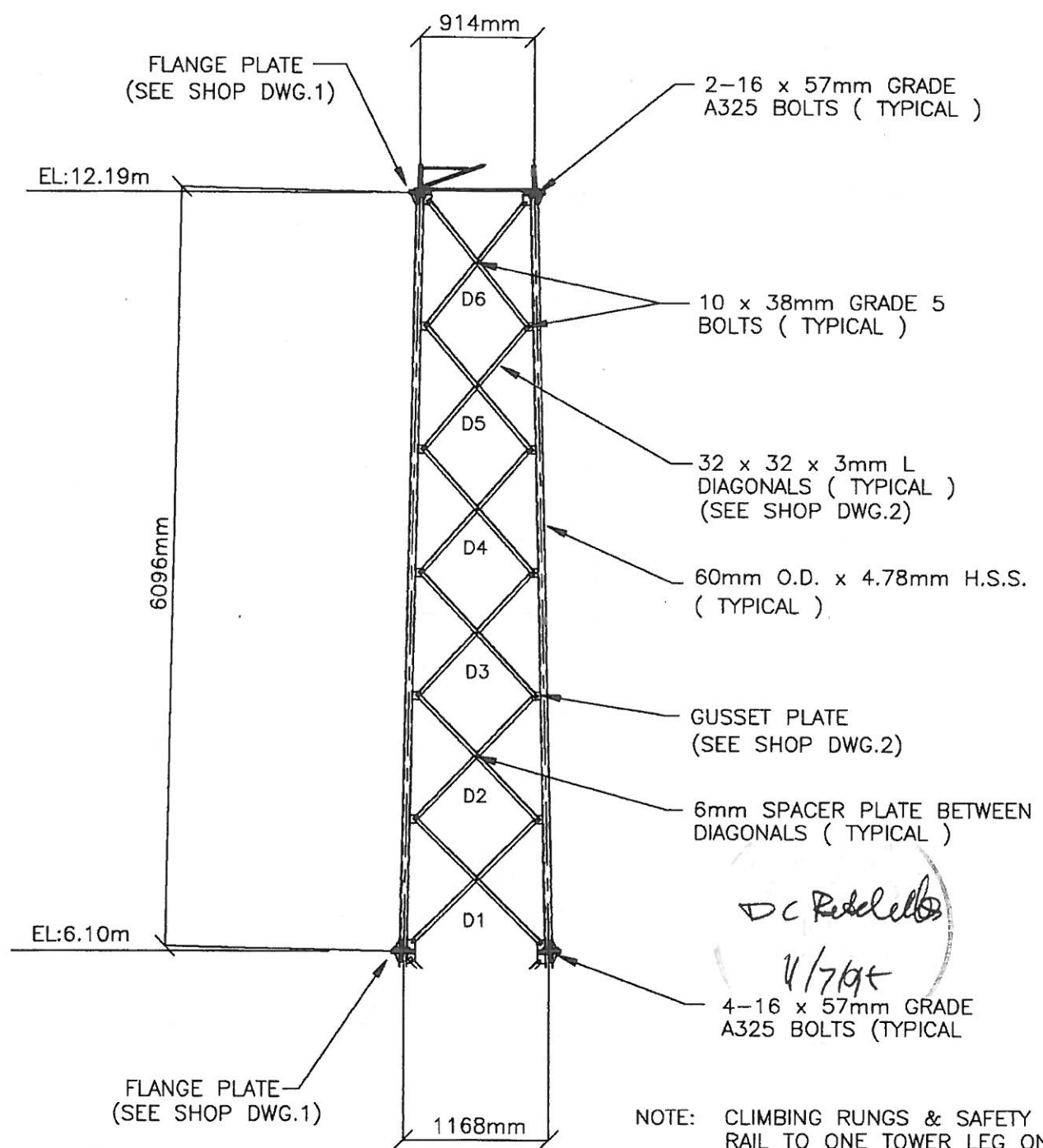
BASE SECTION KDA10-20 DETAILS



NOTE: CLIMBING RUNGS & SAFETY RAIL TO ONE TOWER LEG ONLY. (NOT SHOWN FOR DRAWING CLARITY.)

PACKING LIST				Maxtower COMPANY LIMITED 5 EDMONDSON ST., P.O. BOX 277 BRANTFORD ONTARIO N3T 5M8 FAX (519) 752-4160 TEL (519) 752-6501	DATE: SEPT. 15, 1995
ITEM	QTY	ITEM	QTY		SCALE: NTS
BOLTS:		32x32x3mm L:		CANADIAN COAST GUARD EDWARDSBURG TOWNSHIP	DRAWN BY: D. VAN EVERY
10 x 38mm	60	D6 - 1481mm LONG	6		CHECKED BY:
16 x 762mm PIGTAILS	12	D5 - 1513mm LONG	6	APPROVED BY:	REVISION:
6mm SPACER PL	18	D4 - 1543mm LONG	6	KDA10-20 SECTION DETAIL FOR 24.38m MTAMD30 TOWER (80L100)	
60mm O.D. x 6.35mm H.S.S. 6096mm LONG	3	D3 - 1575mm LONG	6		DRAWING NUMBER: 95113
		D2 - 1605mm LONG	6		
		D1 - 1638mm LONG	6		

SECTION KDA8-20 DETAIL



PACKING LIST			
ITEM	QTY	ITEM	QTY
BOLTS:		32x32x3mm L:	
10 x 38mm	60	D6 - 1310mm LONG	6
16 x 57mm	12	D5 - 1337mm LONG	6
		D4 - 1363mm LONG	6
6mm SPACER PL	18	D3 - 1390mm LONG	6
60mm O.D. x 4.78mm H.S.S.	3	D2 - 1419mm LONG	6
6096mm LONG		D1 - 1448mm LONG	6

Maxtower COMPANY LIMITED
 5 EDMONDSON ST., P.O. BOX 277
 BRANTFORD, ONTARIO, N3T 5M8
 FAX (519) 752-4160 TEL (519) 752-6501

CANADIAN COAST GUARD
 EDWARDSBURG TOWNSHIP

SECTION KDA8-20 ASSEMBLY
 24.38m MTAMD30 TOWER (80L100)

DRAWING NUMBER: 95113 FIELD DRAWING 2

DATE: SEPT. 15, 1995

SCALE: NTS

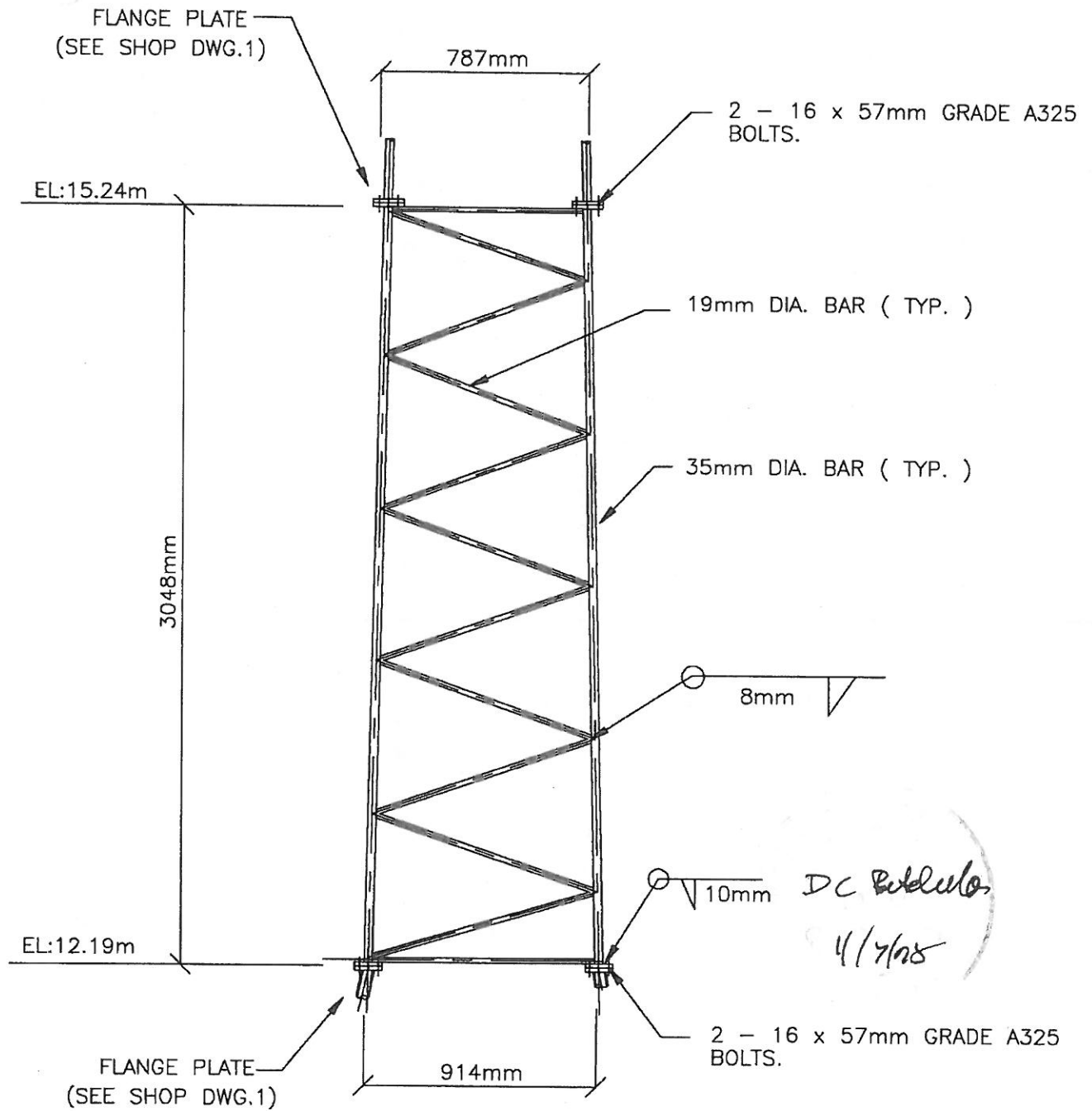
DRAWN BY: D. VAN EVERY

CHECKED BY:

APPROVED BY:

REVISION:

SECTION WA6-10 DETAILS

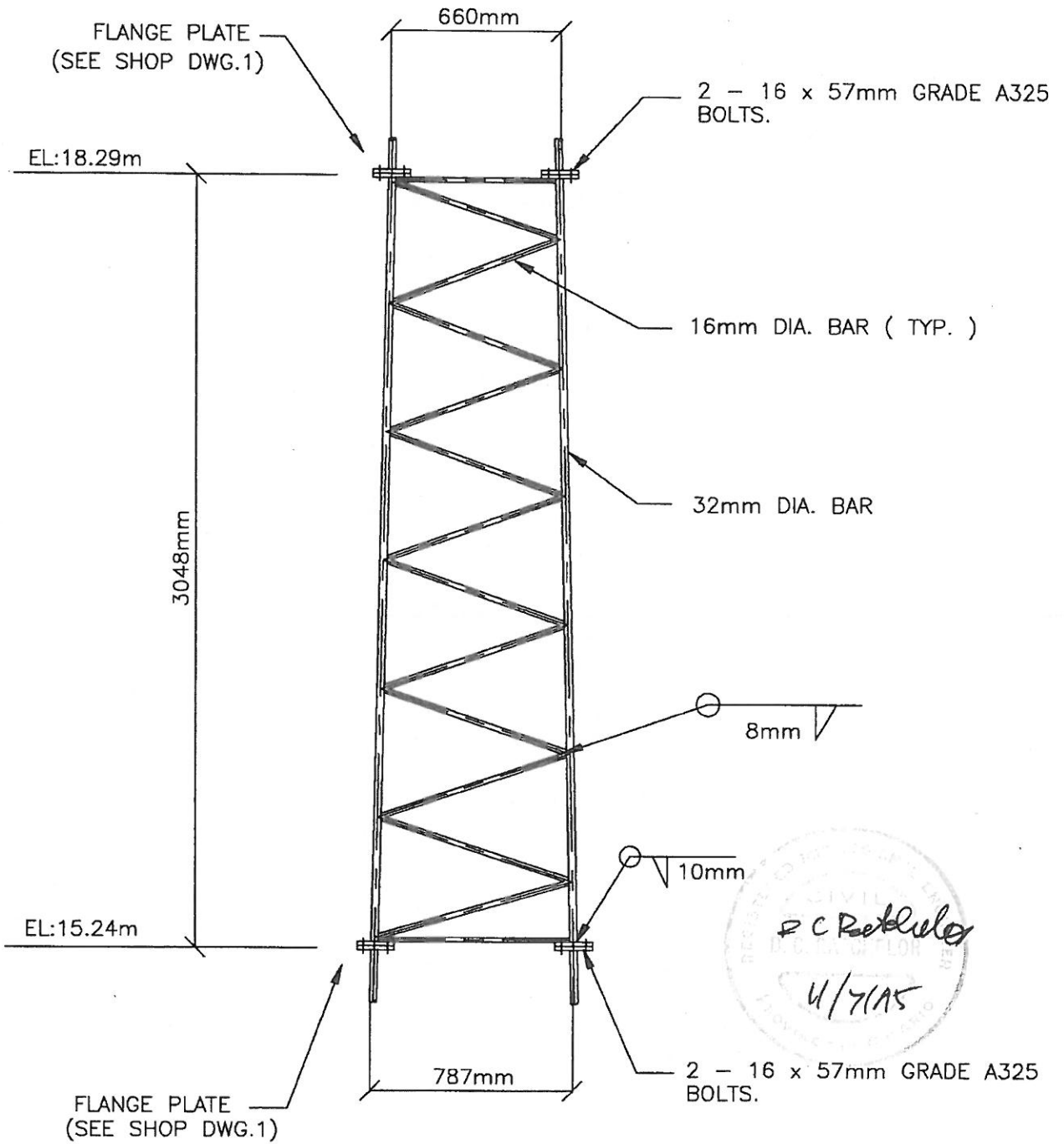


NOTE: CLIMBING RUNGS & SAFETY RAIL TO ONE TOWER LEG ONLY.

PACKING LIST

ITEM	QTY	<p><i>Maxtower</i> COMPANY LIMITED 5 EDMONDSON ST. P.O. BOX 277 BRANTFORD ONTARIO N3T 5M8 FAX(519)752-4160 TEL(519)752-8501</p>	DATE: SEPT. 15, 1995
SECTION WA6-10	1		CANADIAN COAST GUARD EDWARDSBURG TOWNSHIP SECTION WA6-10 ASSEMBLY 24.38m MTAMD30 TOWER (80L100)
BOLTS: 16 x 57mm	6	DRAWN BY: D. VAN EVERY	
			CHECKED BY:
			APPROVED BY:
			REVISION:
		DRAWING NUMBER: 95113	FIELD DRAWING 3

SECTION WA5-10 DETAILS



NOTE: CLIMBING RUNGS & SAFETY RAIL TO ONE TOWER LEG ONLY.

PACKING LIST

ITEM	QTY
SECTION WA5-10	1
BOLTS: 16 x 57mm	6

Maxtower COMPANY LIMITED
 5 EDMONDSON ST., P.O. BOX 277
 BRANTFORD ONTARIO N3T 5M6
 FAX(519)752-4160 TEL(519)752-6501

CANADIAN COAST GUARD
 EDWARDSBURG TOWNSHIP

SECTION WA5-10 ASSEMBLY
 24.38m MTAMD30 TOWER (80L100)

DRAWING NUMBER: 95113 FIELD DRAWING 4

DATE: SEPT. 15, 1995

SCALE: 1=24

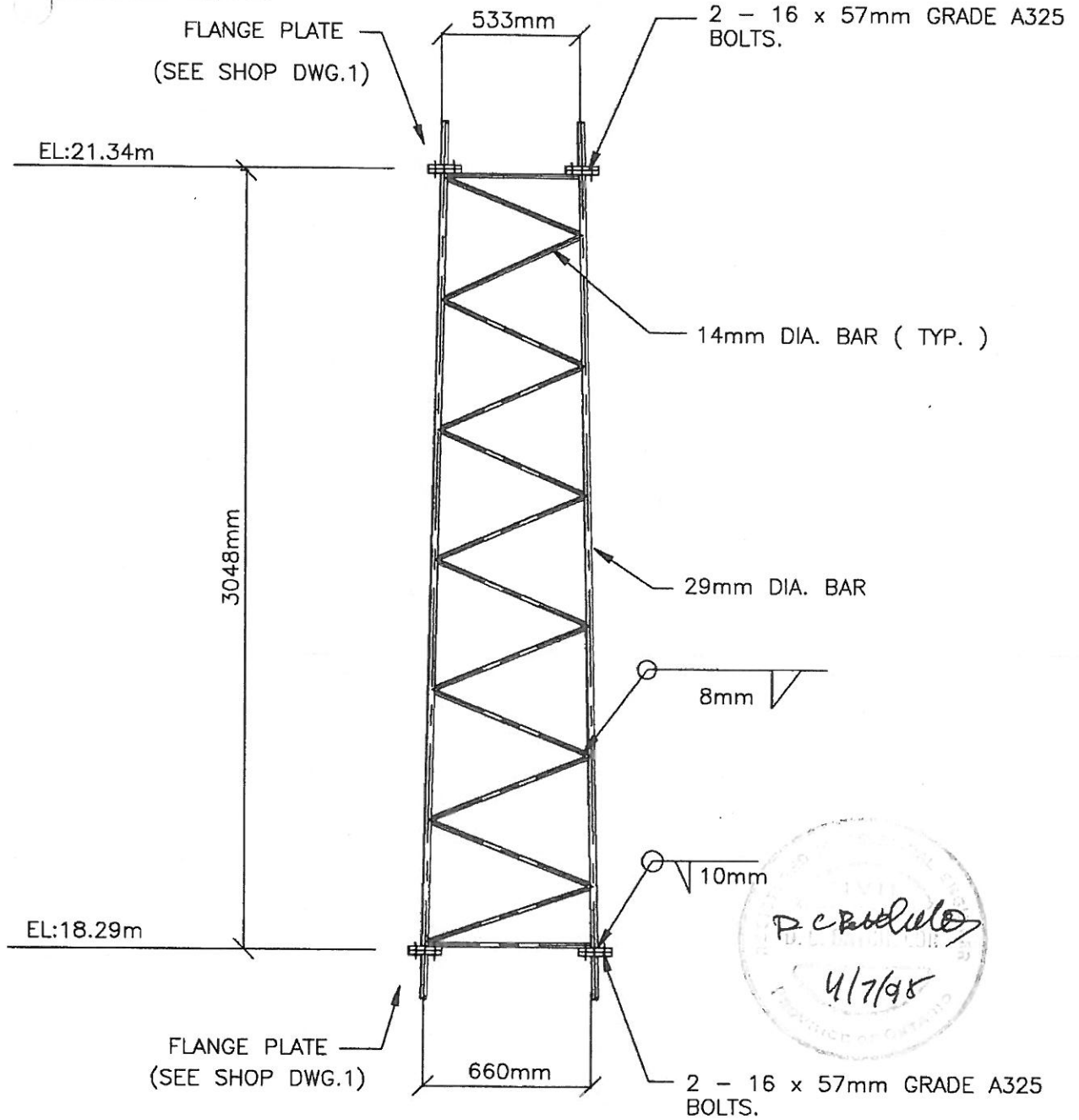
DRAWN BY: D. VAN EVERY

CHECKED BY:

APPROVED BY:

REVISION:

SECTION WA4-10 DETAILS

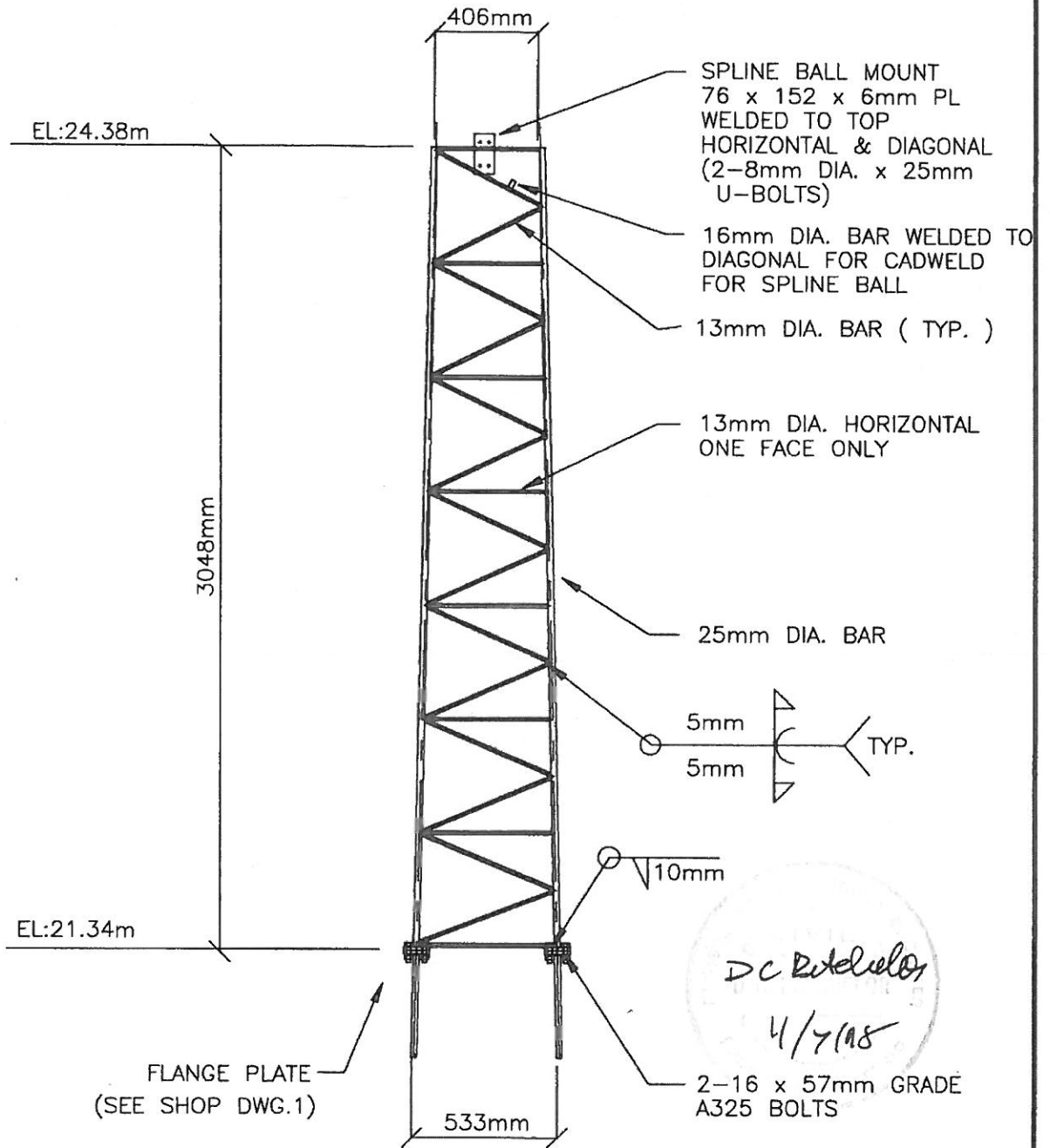


NOTE: CLIMBING RUNGS & SAFETY RAIL TO ONE TOWER LEG ONLY.

PACKING LIST

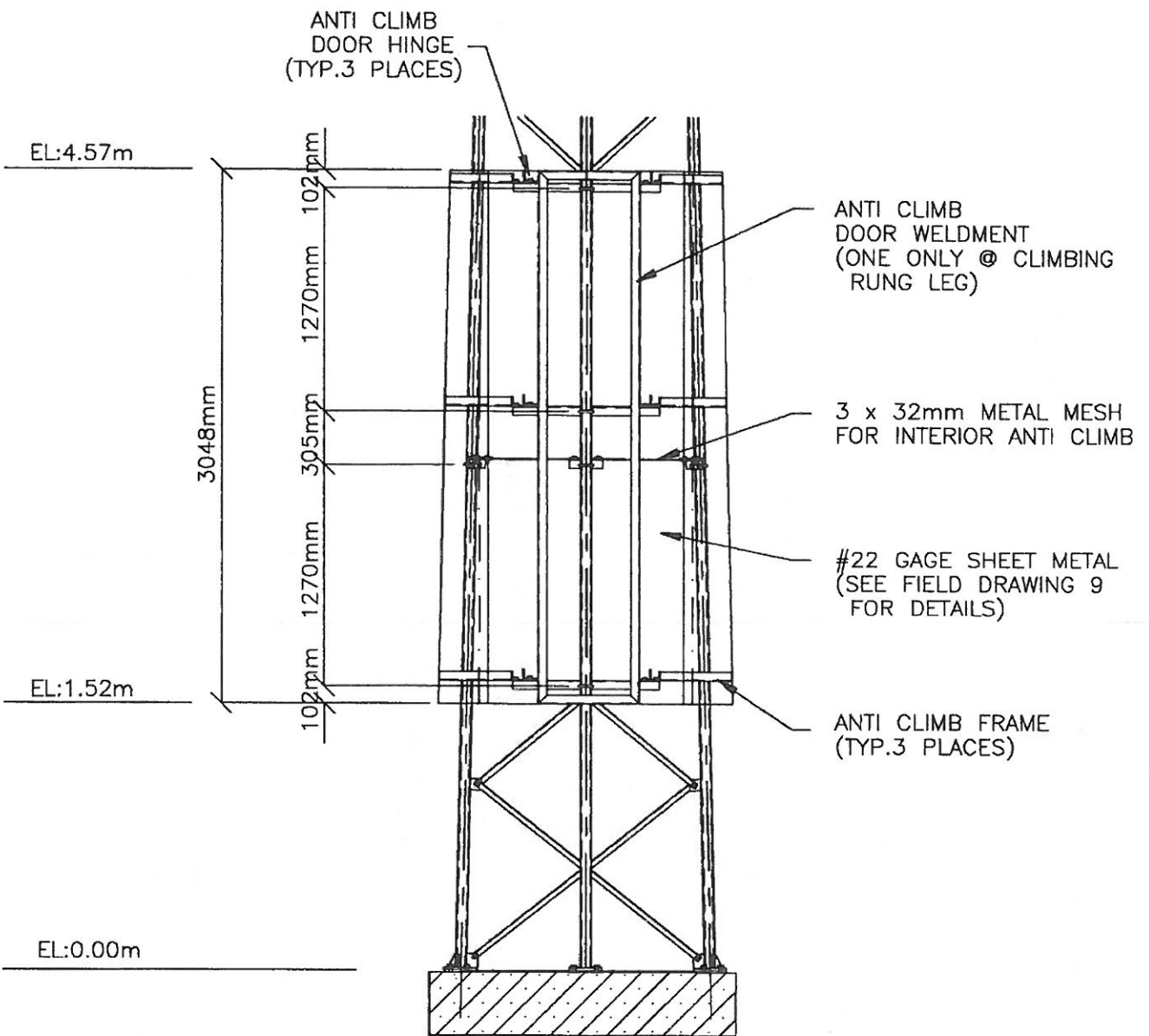
ITEM	QTY		DATE: SEPT. 15, 1995
SECTION WA4-10	1	Maxtower COMPANY LIMITED 5 EDMONDSON ST., P.O. BOX 277 BRANTFORD ONTARIO N3T 5M8 FAX(519)752-4180 TEL(519)752-8501	SCALE: 1=24
BOLTS: 16 x 57mm	6		CANADIAN COAST GUARD EDWARDSBURG TOWNSHIP
		SECTION WA4-10 ASSEMBLY 24.38m MTAMD30 TOWER (80L100)	CHECKED BY:
		DRAWING NUMBER: 95113	APPROVED BY:
		FIELD DRAWING 5	REVISION:

SECTION WA3-10T DETAILS



PACKING LIST

ITEM	QTY		DATE: SEPT. 15, 1995
SECTION WA3-10	1	Maxtower COMPANY LIMITED 5 EDMONDSON ST., P.O. BOX 277 BRANTFORD, ONTARIO, N3T 5M8 FAX(519)752-4160 TEL(519)752-6901	SCALE: 1=24
BOLTS: 16 x 57mm	6		DRAWN BY: D. VAN EVERY
8mm DIA. x 25mm U-BOLT	2	CANADIAN COAST GUARD EDWARDSBURG TOWNSHIP	CHECKED BY:
		SECTION WA3-10T ASSEMBLY 24.38m MTAMD30 TOWER (80L100)	APPROVED BY:
		DRAWING NUMBER: 95113	REVISION:
		FIELD DRAWING 6	



NOTE:

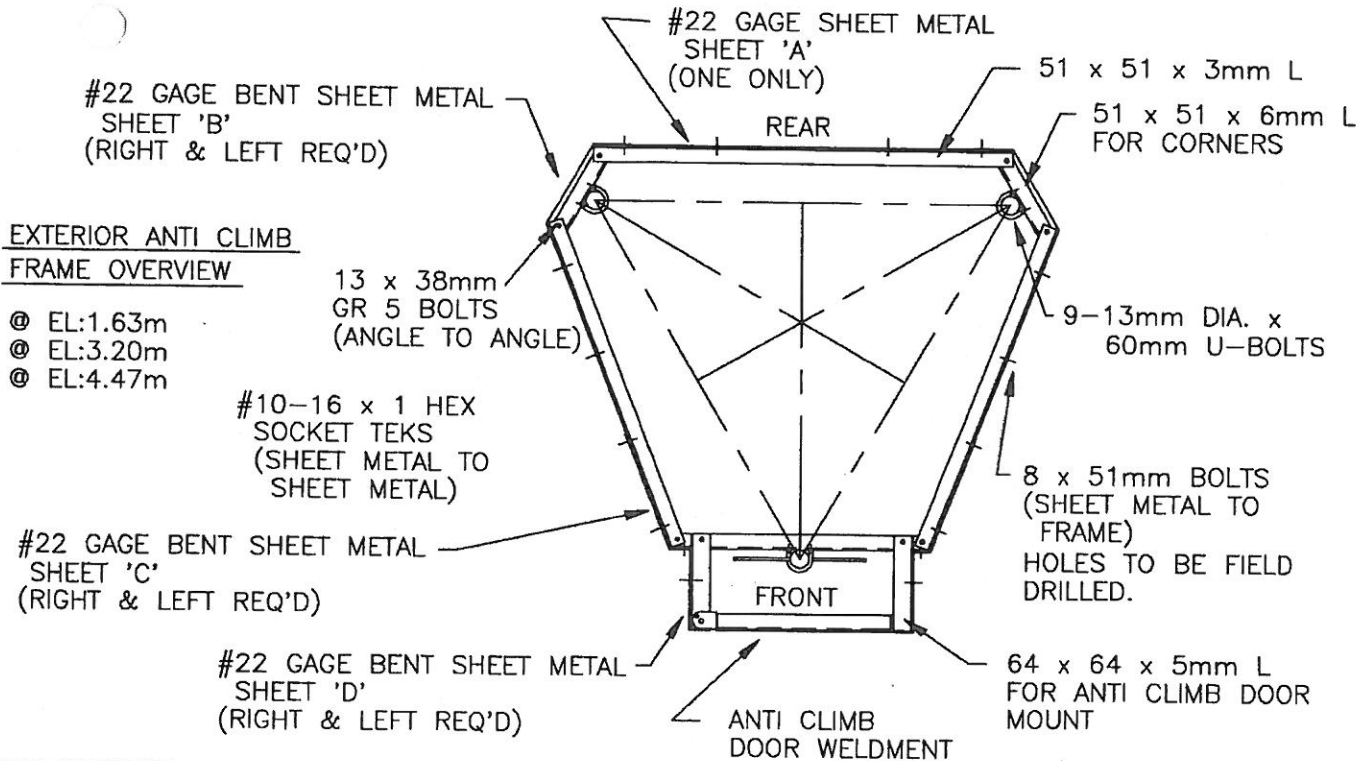
FOR PACKING LIST SEE
FIELD DRAWING 9.

Maxtower COMPANY LIMITED
 5 EDMONDSON ST., P.O. BOX 277
 BRANTFORD ONTARIO N3T 5M8
 FAX(519)752-4160 TEL(519)752-6501

CANADIAN COAST GUARD
 EDWARDSBURG TOWNSHIP
 3.05m ANTI CLIMB WITH DOOR
 24.38m MTAMD30 TOWER (80L100)

DATE:	SEPT. 15, 1995
SCALE:	NTS
DRAWN BY:	D. VAN EVERY
CHECKED BY:	
APPROVED BY:	
REVISION:	

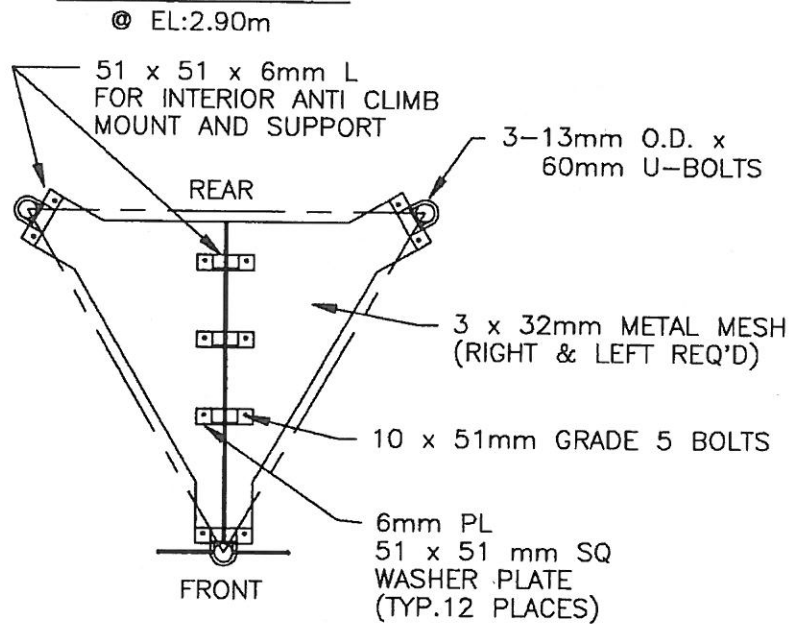
DRAWING NUMBER: 95113 FIELD DRAWING 8



PACKING LIST

ITEM	QTY
INTERIOR ANTI CLIMB	
51 x 51 x 6mm L 187mm LONG	6
6mm PL (51 x 51mm SQ)	12
3 x 32mm METAL MESH	2
BOLTS:	
13 x 60mm U-BOLTS	3
10 x 51 mm GR 5 BOLTS	12
EXTERIOR ANTI CLIMB DOOR WELDMENT	
51 x 51 x 3mm L 1023mm LONG	2
1075mm LONG	2
1140mm LONG	2
1249mm LONG	1
1301mm LONG	1
1368mm LONG	1
51 x 51 x 6mm L 304mm LONG	6
838mm LONG	3
64 x 64 x 5mm L 314mm LONG	6
#22 GAGE SHEET METAL 1219 x 3048mm	1
BENT 1219 x 3048mm	2
BENT 479 x 3048mm	2
BENT 331 x 3048mm	2
BOLTS:	
13 x 60mm U-BOLTS	9
13 x 38mm GR 5	24
8 x 51mm GR 5	48
10 x 51mm GR 5 (DOUBLE NUTS)	3
#10-16 x 1 HEX SOCKET TEKS	40

INTERIOR ANTI CLIMB



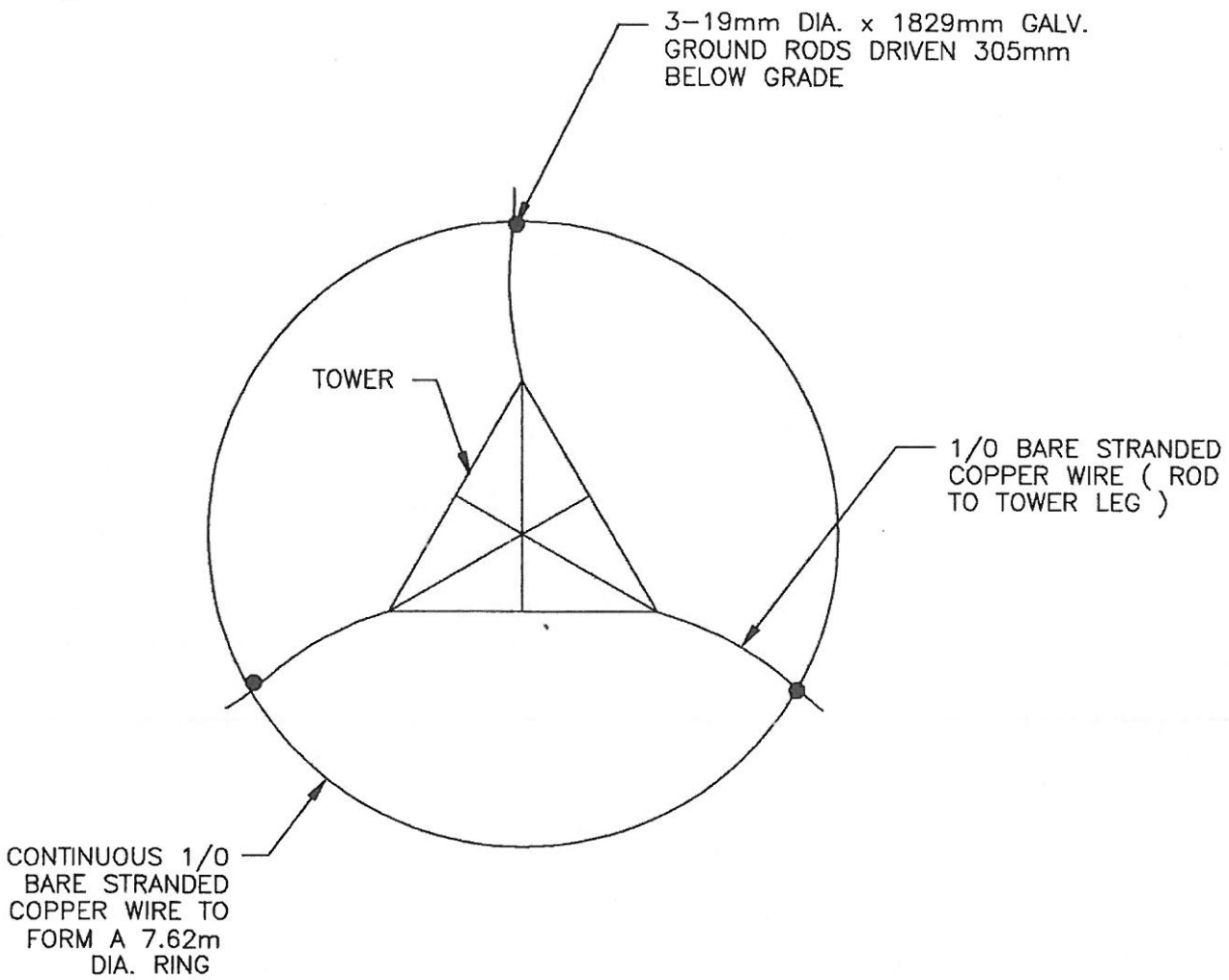
Maxtower COMPANY LIMITED
 5 EDMONDSON ST., P.O. BOX 277
 BRANTFORD ONTARIO N3T 5M8
 FAX (519) 752-4180 TEL (519) 752-9501

CANADIAN COAST GUARD
 EDWARDSBURG TOWNSHIP

TOP VIEW OF ANTI CLIMB
 24.38m MTAMD30 TOWER (80L100)

DRAWING NUMBER: 95113 FIELD DRAWING 9

DATE: SEPT. 18, 1995
SCALE: NTS
DRAWN BY: D. VAN EVERY
CHECKED BY:
APPROVED BY:
REVISION:



NOTE: 1/ COVER ALL GROUND WIRE WITH
305mm (MIN.) SOIL

- CONNECTIONS: 1/ WIRE TO TOWER – SLU 225 GROUND CONNECTOR.
2/ WIRE TO GROUND ROD – BURNDY BRONZE GROUND ROD CONNECTOR.

Maxtower COMPANY LIMITED 5 EDMONDSON ST., F.O. BOX 277 BRANTFORD ONTARIO N3T 5M8 FAX(519)752-4160 TEL(519)752-6501	DATE: SEPT. 20, 1995
	SCALE: NTS
CANADIAN COAST GUARD EDWARDSBURG TOWNSHIP GROUNDING DETAILS 24.38m MTAMD30 TOWER (80L100)	DRAWN BY: D. VAN EVERY
	CHECKED BY:
	APPROVED BY:
DRAWING NUMBER: 95113 FIELD DRAWING 10	REVISION:

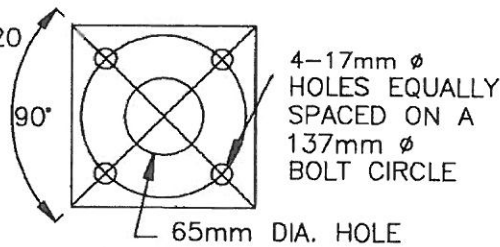
FLANGE PLATE DETAILS FOR KDA SECTIONS
(KDA8-20 & KDA10-20)

NOTES:

1. ALL FLANGE PLATES HAVE A HOLE IN CENTER.
2. FLANGE PLATE THICKNESS AND HOLE SIZES MAY CHANGE DUE TO CLIMATE ZONES AND LOADINGS.
3. HOLES FOR ANCHOR BOLTS MUST BE 3mm OVERSIZED.

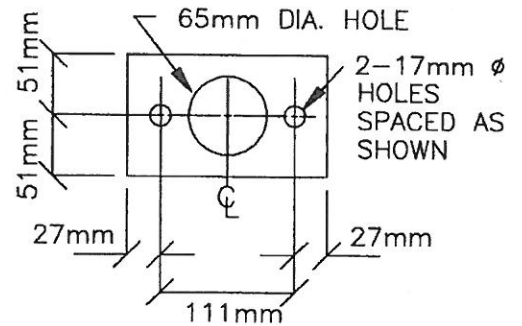
16 x 152 x 152mm PL
6 - REQ'D

3@ BOTTOM KDA8-20
3@ TOP KDA10-20



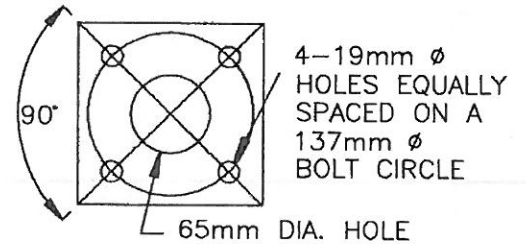
TOP PLATE FOR KDA8-20

16 x 102 x 165mm PL
3 - REQ'D



BOTTOM PLATE FOR KDA10-20

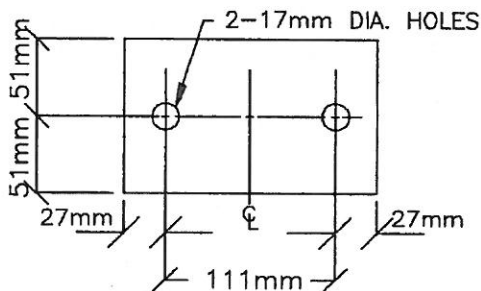
16 x 152 x 152mm PL
3 - REQ'D



FLANGE PLATE DETAILS FOR WA SECTIONS
(WA6-10 TO WA3-10T)

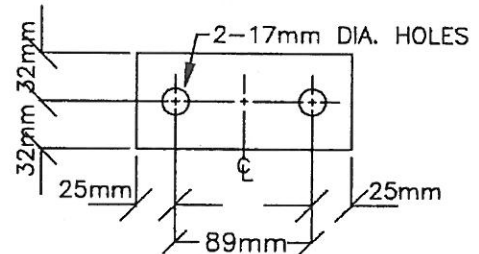
16 x 102 x 165mm PL
3 - REQ'D

3 @ WA6 BOTTOM



13 x 64 x 137mm PL
18 - REQ'D

3 @ WA6 TOP
6 @ WA5 TOP & BOTTOM
6 @ WA4 TOP & BOTTOM
3 @ WA3 BOTTOM



Maxtower COMPANY LIMITED
5 EDMONDSON ST., P.O. BOX 277
BRANTFORD ONTARIO N3T 5M8
FAX(519)752-4160 TEL(519)752-6501

CANADIAN COAST GUARD
EDWARDSBURG TOWNSHIP

FLANGE PLATE DETAILS
24.38m MTAMD30 TOWER (80L100)

DRAWING NUMBER: 95113 SHOP DRAWING 1

DATE: SEPT. 15, 1995

SCALE: NTS

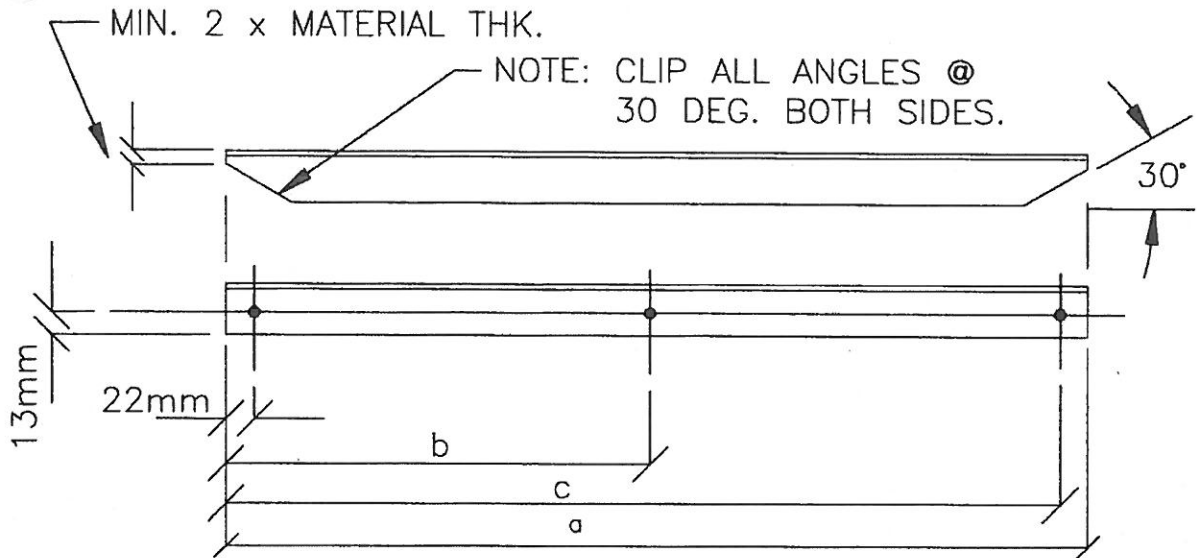
DRAWN BY: D. VAN EVERY

CHECKED BY:

APPROVED BY:

REVISION:

BRACING DETAILS (NTS)

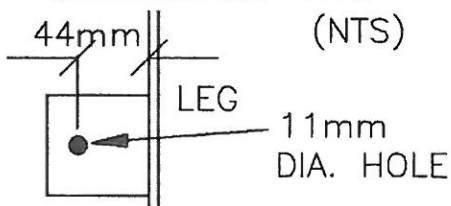


MATERIAL: 32x32x3mm L
72 - REQ'D
(6 PER BRACE SIZE)

3-11mm DIA. HOLES
PER BRACE

SECTION	BRACE #	a	b	c
KDA8-20	D6	1310mm	638mm	1287mm
	D5	1337mm	652mm	1314mm
	D4	1364mm	665mm	1341mm
	D3	1390mm	679mm	1368mm
	D2	1419mm	695mm	1397mm
	D1	1448mm	710mm	1426mm
KDA10-20	D6	1481mm	727mm	1459mm
	D5	1513mm	741mm	1491mm
	D4	1543mm	757mm	1521mm
	D3	1575mm	773mm	1553mm
	D2	1605mm	789mm	1583mm
	D1	1638mm	806mm	1616mm

GUSSET PLATE DETAILS



6mm x 64mm x 64mm PL

84 - REQ'D
42 @ KDA8-20
42 @ KDA10-20

Maxtower COMPANY LIMITED
5 EDMONDSON ST., P.O. BOX 277
BRANTFORD, ONTARIO, N3T 5M8
FAX (519) 752-4160 TEL (519) 752-8501

CANADIAN COAST GUARD
EDWARDSBURG TOWNSHIP

BRACING & GUSSET DETAIL (KDA8-20B ONLY)
24.38m MTAMD30 TOWER (80L100)

DRAWING NUMBER: 95113 SHOP DRAWING 2

DATE: SEPT. 15, 1995

SCALE: NTS

DRAWN BY: D. VAN EVERY

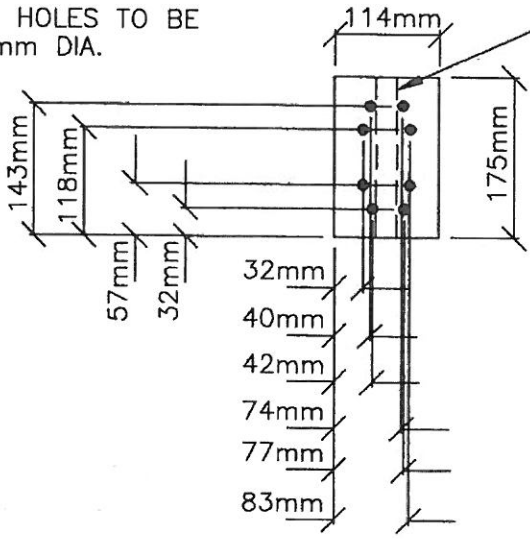
CHECKED BY:

APPROVED BY:

REVISION:

6mm PL
 114 x 175mm
 4 - REQ'D
 (2-LEFT & 2-RIGHT)

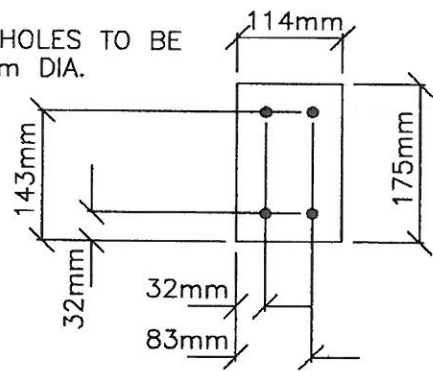
ALL HOLES TO BE
 11mm DIA.



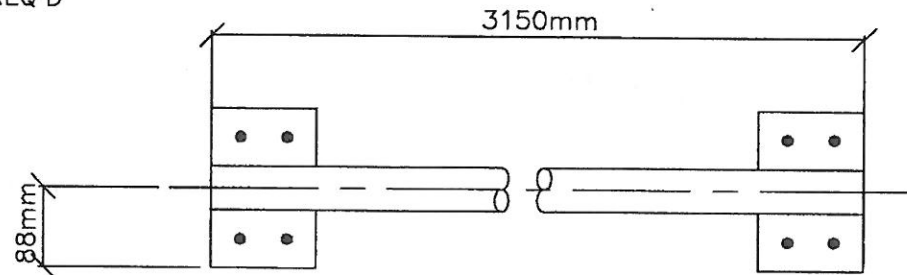
10mm PACK REQ'D
 (FOR 1-LEFT & 1-RIGHT)
 FOR UPPER ANTENNA MOUNT

6mm PL
 114 x 175mm
 4 - REQ'D
 (TO BE WELDED TO 48mm O.D. PIPE
 AS SHOWN BELOW)

ALL HOLES TO BE
 11mm DIA.



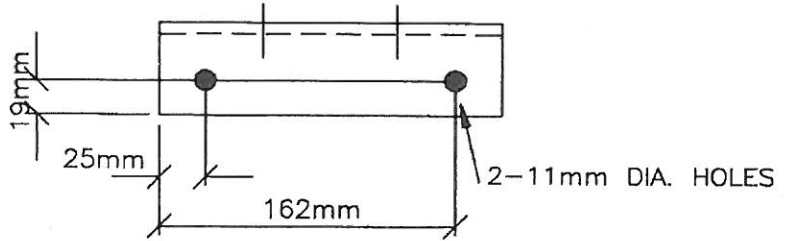
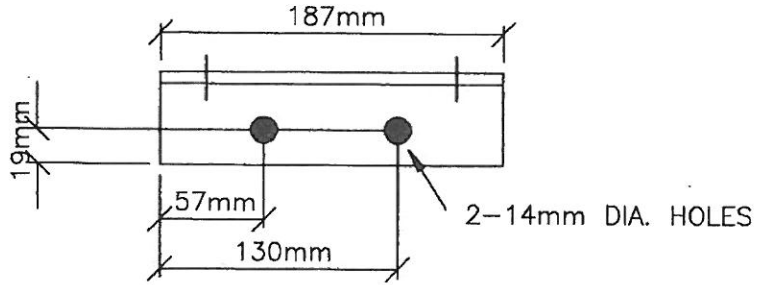
48mm O.D. PIPE WELDMENT
 3150mm LONG
 2 - REQ'D



Maxtower COMPANY LIMITED 5 EDMONDSON ST., P.O. BOX 277 BRANTFORD, ONTARIO, N3T 5M8 FAX (519) 752-4160 TEL (519) 752-8501 CANADIAN COAST GUARD EDWARDSBURG TOWNSHIP SATELLITE ANTENNA MOUNT 24.38m MTAMD30 TOWER (80L100)	DATE: SEPT. 19, 1995
	SCALE: 1=8
	DRAWN BY: D. VAN EVERY
	CHECKED BY:
	APPROVED BY:
	REVISION:
DRAWING NUMBER: 95113 SHOP DRAWING 3	

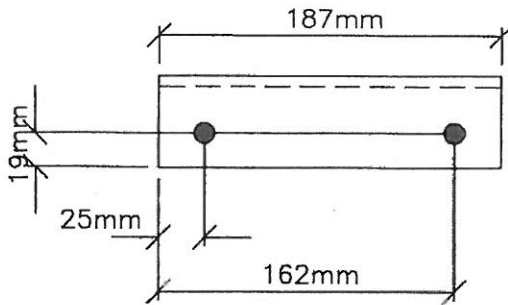
METAL MESH MOUNTS
FOR INTERIOR
ANTI CLIMB

51 x 51 x 6mm L
187mm LONG
3 - REQ'D



METAL MESH SUPPORTS
FOR INTERIOR
ANTI CLIMB

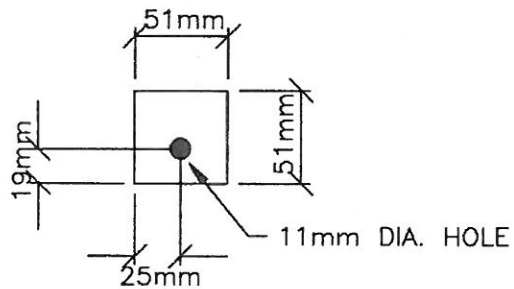
51 x 51 x 6mm L
187mm LONG
3 - REQ'D



ALL HOLES TO BE
11mm DIA.

WASHER PLATE FOR
MOUNTING METAL MESH

6mm PL
51 x 51mm
12 - REQ'D
(2 PER SUPPORT &
MOUNT ANGLE)



Maxtower COMPANY LIMITED

5 EDMONDSON ST., P.O. BOX 277
BRANTFORD ONTARIO N3T 5M8
FAX(519)752-4160 TEL(519)752-6501

CANADIAN COAST GUARD
EDWARDSBURG TOWNSHIP

ANTI CLIMB (PG.1)
INTERIOR AC ANGLES
24.38m MTAMD30 TOWER (80L100)

DATE: SEPT. 19, 1995

SCALE: 1=4

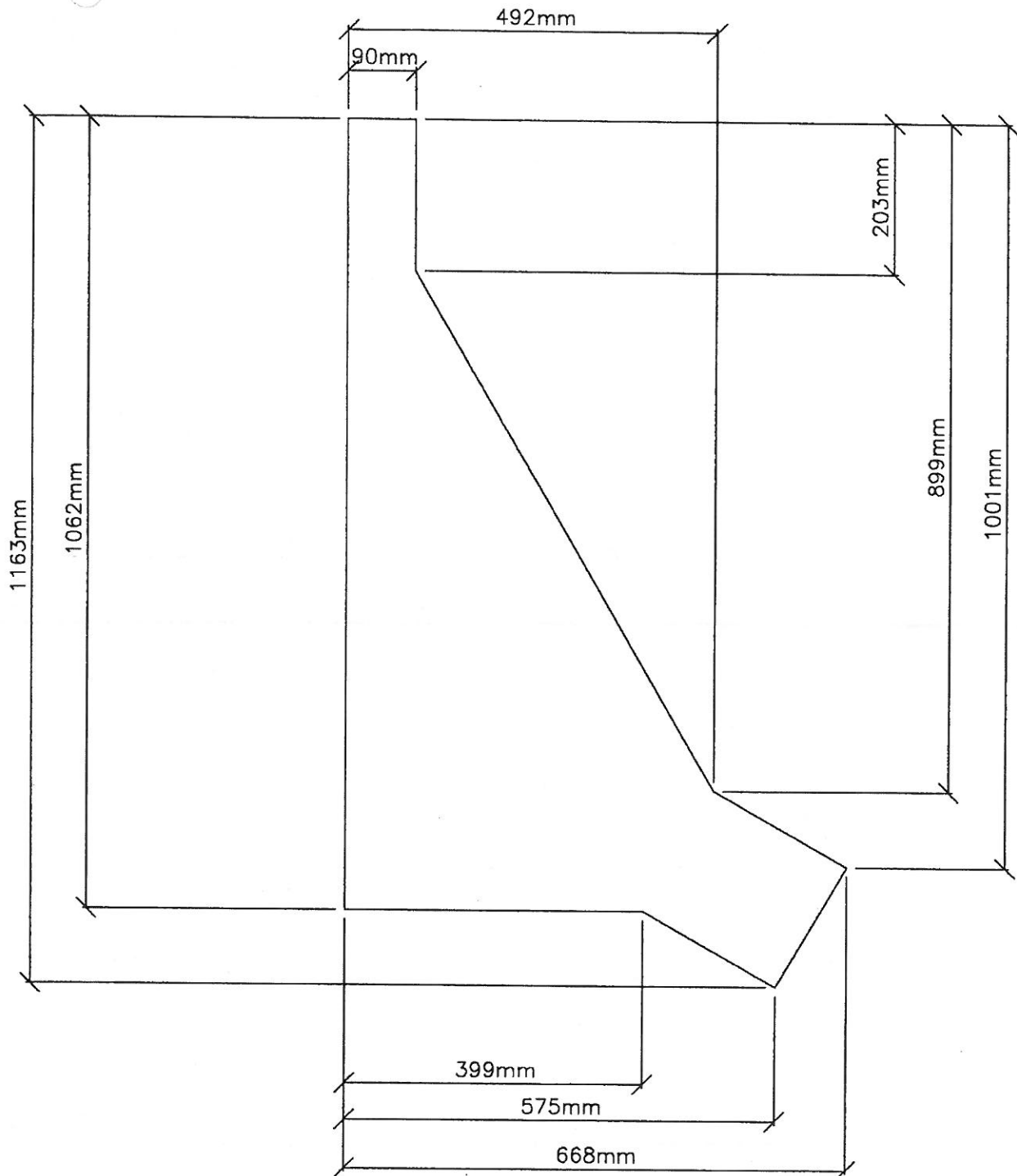
DRAWN BY: D. VAN EVERY

CHECKED BY:

APPROVED BY:

REVISION:

DRAWING NUMBER: 95113 SHOP DRAWING 4



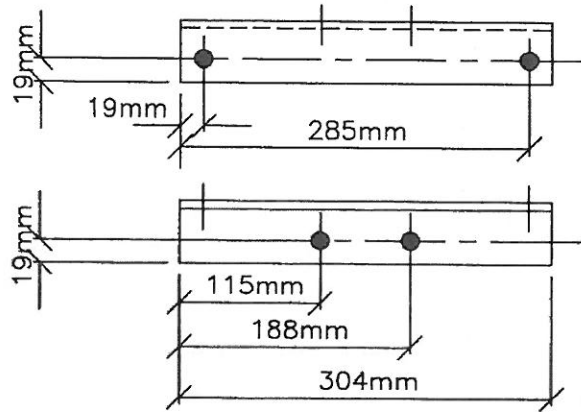
3 x 32mm METAL MESH
 FOR INTERIOR ANTI CLIMB
 2 - REQ'D
 (1-RIGHT & 1-LEFT)

Maxtower COMPANY LIMITED 5 EDMONDSON ST., P.O. BOX 277 BRANTFORD, ONTARIO, N3T 5M8 FAX (519) 752-4160 TEL (519) 752-8501 CANADIAN COAST GUARD EDWARDSBURG TOWNSHIP ANTI CLIMB (PG.2) INTERIOR ANTI CLIMB METAL MESH 24.38m MTAMD30 TOWER (80L100)	DATE: SEPT. 19, 1995
	SCALE: 1=8
	DRAWN BY: D. VAN EVERY
	CHECKED BY:
	APPROVED BY:
DRAWING NUMBER: 95113 SHOP DRAWING 5	REVISION:

EXTERIOR ANTI CLIMB
CORNER ANGLES FOR FRAME

51 x 51 x 6mm L
304mm LONG
6 - REQ'D

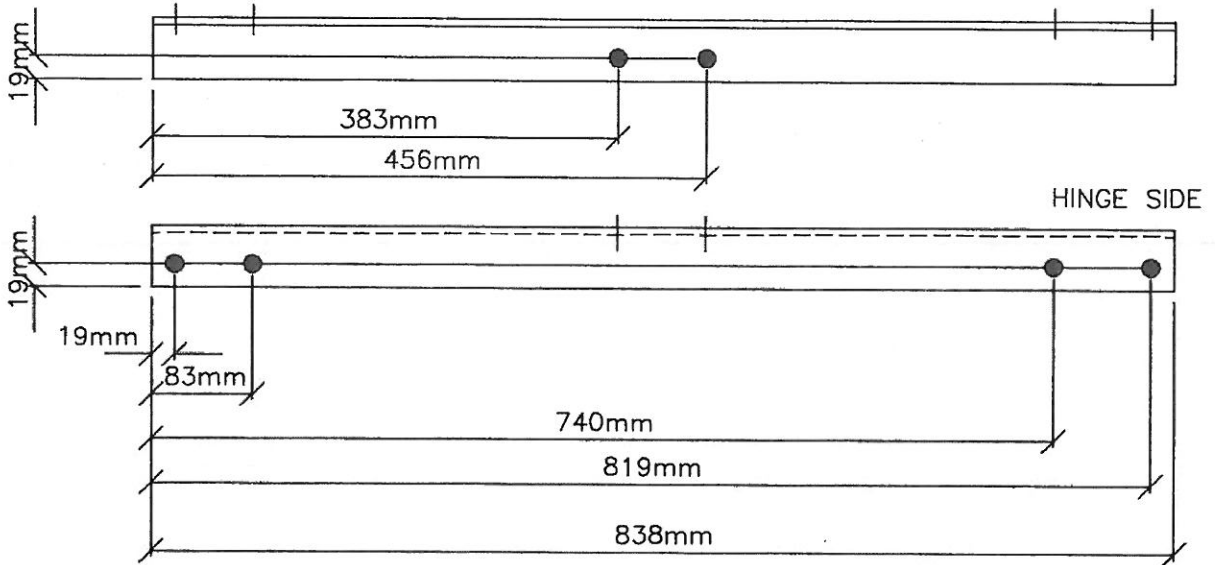
ALL HOLES TO BE
14mm DIA.



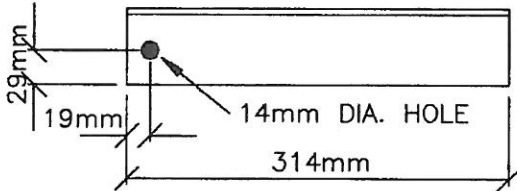
EXTERIOR ANTI CLIMB DOOR CORNER ANGLE

51 x 51 x 6mm L
838mm LONG
3 - REQ'D

ALL HOLES TO BE 14mm DIA.

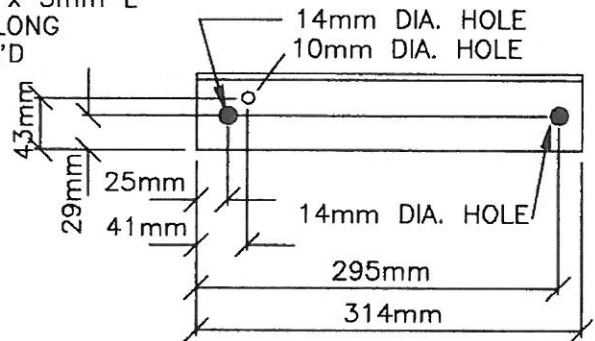


DOOR MOUNT
64 x 64 x 5mm L
314mm LONG
3 - REQ'D



DOOR MOUNT (HINGE SIDE)

64 x 64 x 5mm L
314mm LONG
3 - REQ'D



Maxtower COMPANY LIMITED

5 EDMONDSON ST., P.O. BOX 277
BRANTFORD, ONTARIO N3T 5M8
FAX (519) 752-4160 TEL (519) 752-8501

CANADIAN COAST GUARD
EDWARDSBURG TOWNSHIP
ANTI CLIMB (PG.3)
EXTERIOR ANTI CLIMB FRAME (PG.1)
24.38m MTAMD30 TOWER (80L100)

DATE: SEPT. 19, 1995

SCALE: 1=6

DRAWN BY: D. VAN EVERY

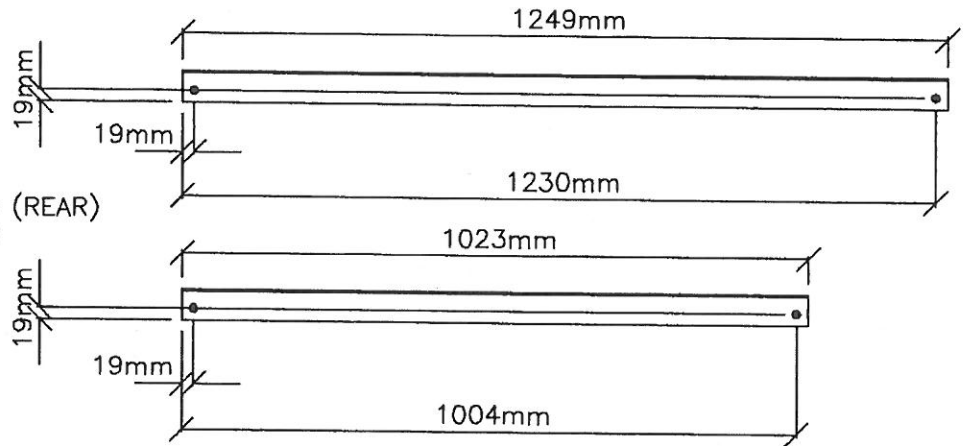
CHECKED BY:

APPROVED BY:

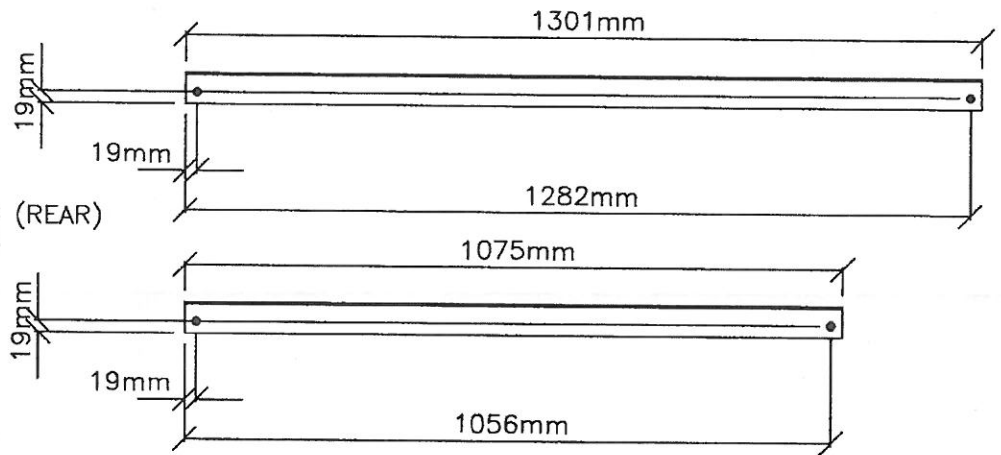
REVISION:

DRAWING NUMBER: 95113 SHOP DRAWING 6

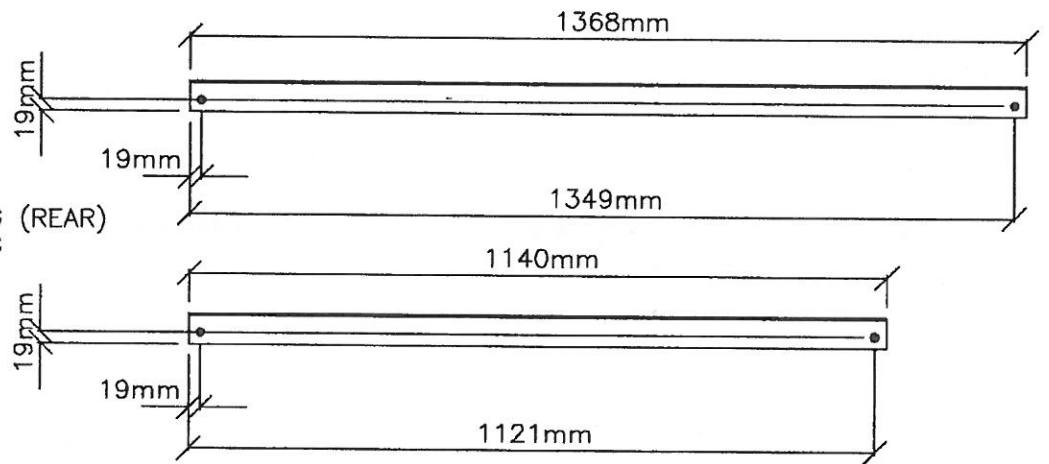
UPPER FRAME
 51 x 51 x 3mm L
 1 @ 1249mm LONG (REAR)
 2 @ 1023mm LONG



MIDDLE FRAME
 51 x 51 x 3mm L
 1 @ 1301mm LONG (REAR)
 2 @ 1075mm LONG

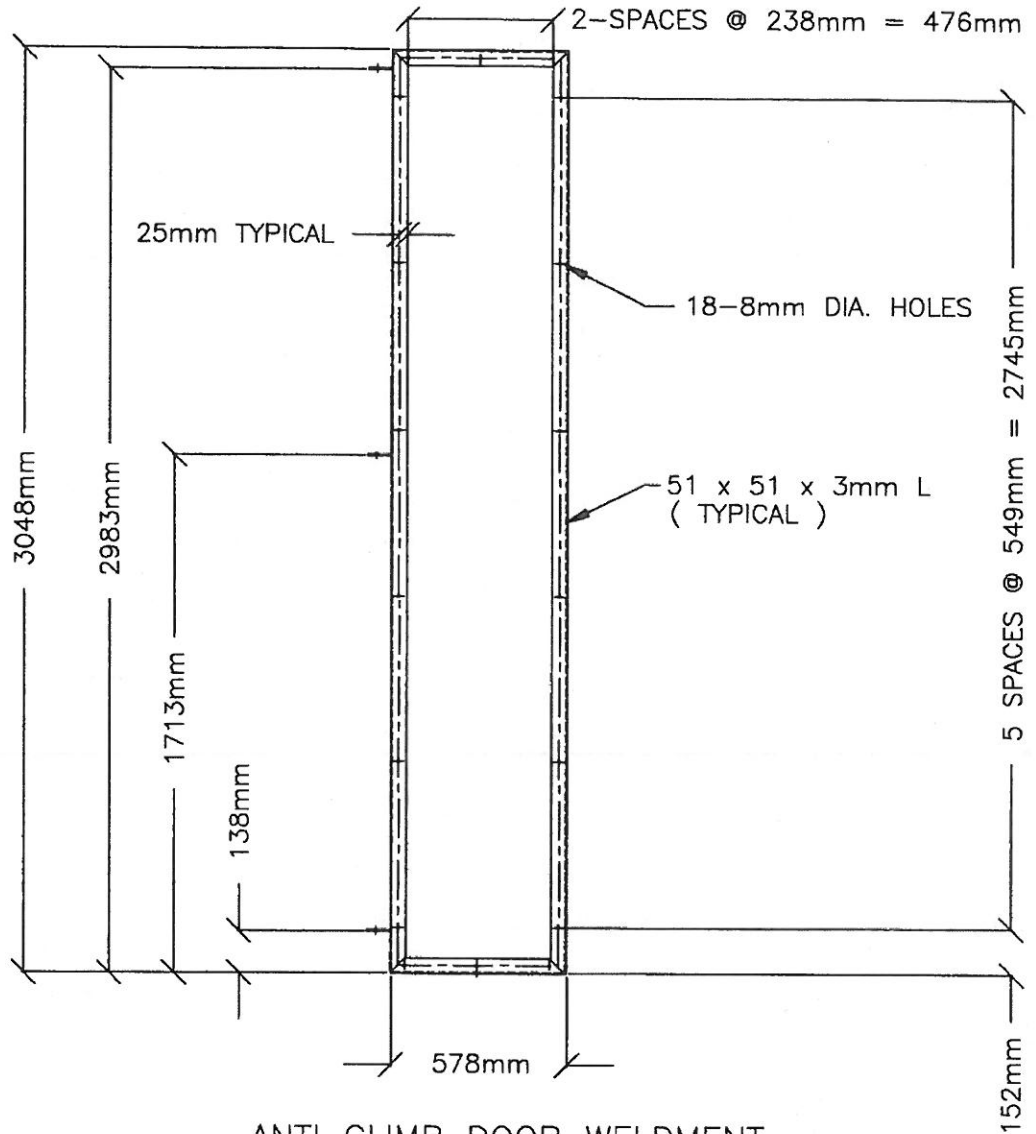


LOWER FRAME
 51 x 51 x 3mm L
 1 @ 1368mm LONG (REAR)
 2 @ 1140mm LONG



NOTE: ALL HOLES TO BE
 14mm DIA.

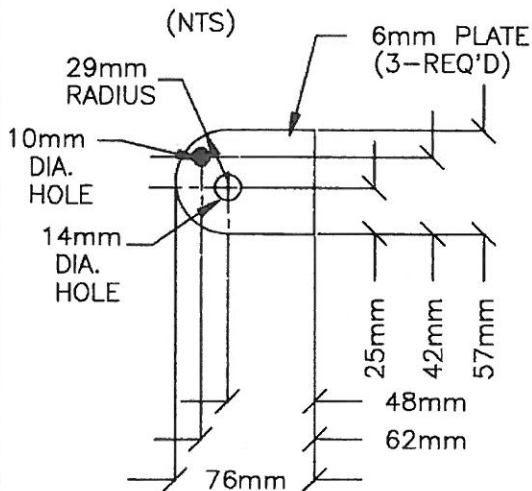
<p>Maxtower COMPANY LIMITED 5 EDMONDSON ST., P.O. BOX 277 BRANTFORD, ONTARIO N3T 5M8 FAX (519) 752-4160 TEL (519) 752-8501</p> <p>CANADIAN COAST GUARD EDWARDSBURG TOWNSHIP</p> <p>ANTI CLIMB (PG.4) EXTERIOR ANTI CLIMB FRAME (PG.2) 24.38m MTAMD30 TOWER (80L100)</p> <p>DRAWING NUMBER: 95113 SHOP DRAWING 7</p>	DATE: SEPT. 19, 1995
	SCALE: 1=12
	DRAWN BY: D. VAN EVERY
	CHECKED BY:
	APPROVED BY:
REVISION:	



ANTI CLIMB DOOR WELDMENT

1 - REQ'D

DOOR HINGE DETAIL



Maxtower COMPANY LIMITED

5 EDMONDSON ST., P.O. BOX 277
BRANTFORD, ONTARIO, N3T 5M8
FAX (519) 752-4160 TEL (519) 752-8501

CANADIAN COAST GUARD
EDWARDSBURG TOWNSHIP
ANTI CLIMB (PG.5)
DOOR WELDMENT
24.38m MTAMD30 TOWER (80L100)

DATE: SEPT. 19, 1995

SCALE: 1=24

DRAWN BY: D. VAN EVERY

CHECKED BY:

APPROVED BY:

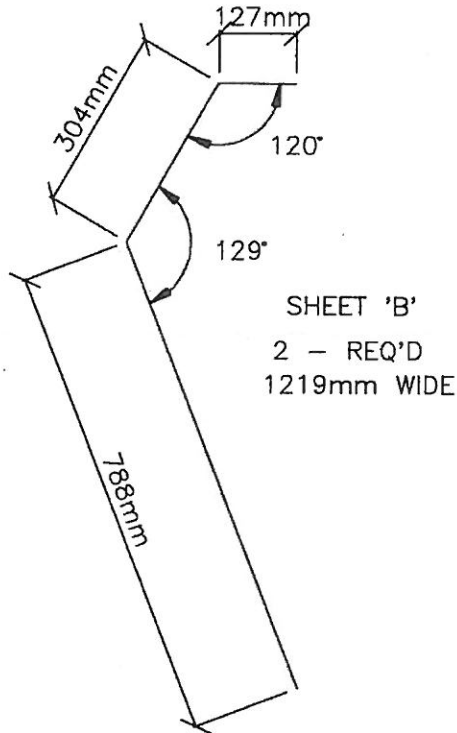
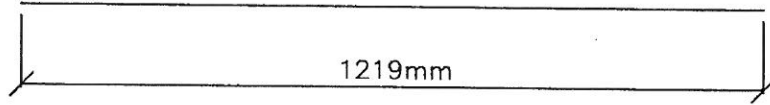
REVISION:

DRAWING NUMBER: 95113 SHOP DRAWING 8

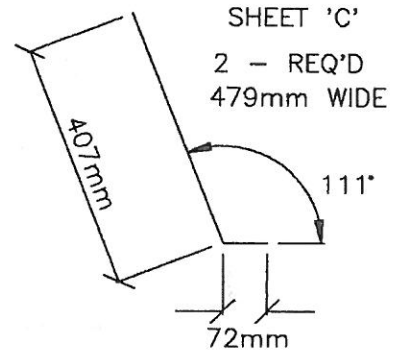
SHEET METAL FOR EXTERIOR ANTI CLIMB

ALL SHEET METAL IS #22 GAGE x 3048mm LONG

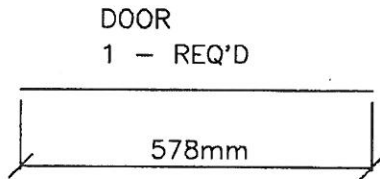
SHEET 'A'
1 - REQ'D



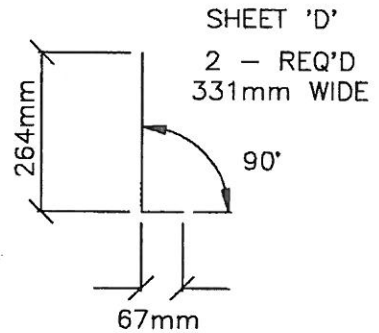
SHEET 'B'
2 - REQ'D
1219mm WIDE



SHEET 'C'
2 - REQ'D
479mm WIDE



DOOR
1 - REQ'D



SHEET 'D'
2 - REQ'D
331mm WIDE

Maxtower COMPANY LIMITED

5 EDMONDSON ST., P.O. BOX 277
BRANTFORD, ONTARIO, N3T 5M8
FAX (519) 752-4180 TEL (519) 752-9501

CANADIAN COAST GUARD
EDWARDSBURG TOWNSHIP
ANTI CLIMB (PG.6)
SHEET METAL
24.38m MTAMD30 TOWER (80L100)

DATE: SEPT. 20, 1995

SCALE: 1=12

DRAWN BY: D. VAN EVERY

CHECKED BY:

APPROVED BY:

REVISION:

DRAWING NUMBER: 95113 SHOP DRAWING 9

