

- DRAWING NOTES:**
- ① EXISTING TRANSFORMER TO BE REPLACED (NEW TRANSFORMER/PAD TO BE LOCATED TO BEST SUIT RE-USING EXISTING CABLE CONNECTIONS).
 - ② INCOMING SUB CABLE POWER FROM CUSTOMER POLE TO BE REPLACED, SEE SINGLE LINE AND SPECIFICATIONS FOR DETAILS
 - ③ ELECTRICAL TECK CABLE SERVICE.
 - ④ DIESEL GENSET FUEL TANK
 - ⑤ GREEN HOUSE
 - ⑥ MAIN ELECTRICAL AND DIESEL GENSET BUILDING
 - ⑦ DWELLING - SENIOR KEEPER
 - ⑧ DWELLING - JUNIOR KEEPER
 - ⑨ STORAGE SHED
 - ⑩ RAMP AND FLOAT DOCK
 - ⑪ HELIPAD
 - ⑫ LIGHT TOWER

CONSULTANT: Project No: 2015446

320 - 3605 Gilmore Way
Burnaby, B.C. V5G 4X5
Tel: 604-298-4858
Fax: 604-298-8143

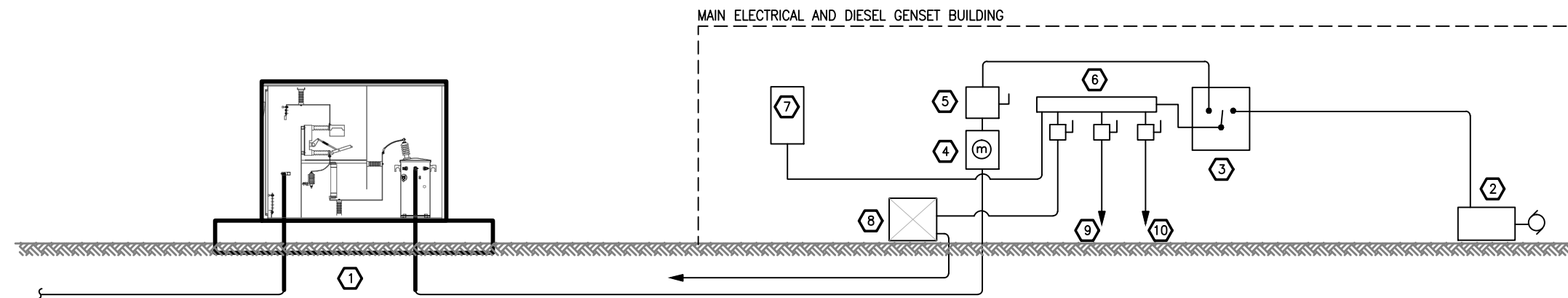
NO.	DATE	REVISION
4	06/08/16	ISSUED FOR TENDER
3	02/12/16	ISSUED TO BCH
2	01/29/16	ISSUED FOR REVIEW
4	11/27/15	ISSUED FOR REVIEW

DATE: MAY 30, 2016	DRAWN BY: IR	CHECKED BY: CG
SCALE: NTS		
<small>ALL RIGHTS RESERVED. THIS DRAWING AND DESIGN REPRESENTED HEREIN IS THE EXCLUSIVE PROPERTY OF PRISM ENGINEERING LTD. AND MAY NOT BE USED OR DUPLICATED WITHOUT PRIOR WRITTEN CONSENT. THE CONTRACTOR SHALL CHECK AND VERIFY ALL DIMENSIONS AND REPORT ALL ERRORS AND OMISSIONS TO THE CONSULTANT. DO NOT SCALE THIS DRAWING.</small>		

PROJECT: DRYAD POINT LIGHTSTATION TRANSFORMER REPLACEMENT	REV. NO. 4
DRAWING TITLE: ELECTRICAL SITE PLAN	CCG DWG NO. 15324
	SHEET 1 OF 4

DRAWING NOTES:

- ① NEW REPLACEMENT TRANSFORMER ENCLOSURE C/W TRANSFORMER, ISOLATION SWITCH, AND PRIMARY FUSING 25KVA, 7.2KV TO 120/240V 1P3W
- ② EXISTING BACKUP POWER DIESEL GENERATOR (30KW)
- ③ EXISTING AUTOMATIC TRANSFER SWITCH
- ④ EXISTING MAIN BC HYDRO POWER METER
- ⑤ EXISTING 200A 120/240V 1P3W MAIN DISCONNECT SWITCH
- ⑥ EXISTING SPLITTER TROUGH
- ⑦ EXISTING 32 CIRCUIT 120/240 1P3W PANELBOARD C/W 40A 2P MAIN BREAKER
- ⑧ EXISTING 25KVA TRANSFORMER 240V TO 600V 1P3W FOR SERVICE TO TRACTOR SHED
- ⑨ EXISTING DISCONNECT SWITCH AND SERVICE TO DWELLING – JUNIOR KEEPER (ASSISTANT)
- ⑩ EXISTING DISCONNECT SWITCH AND SERVICE TO DWELLING – SENIOR KEEPER (PRINCIPAL)



CONSULTANT: Project No: 2015446



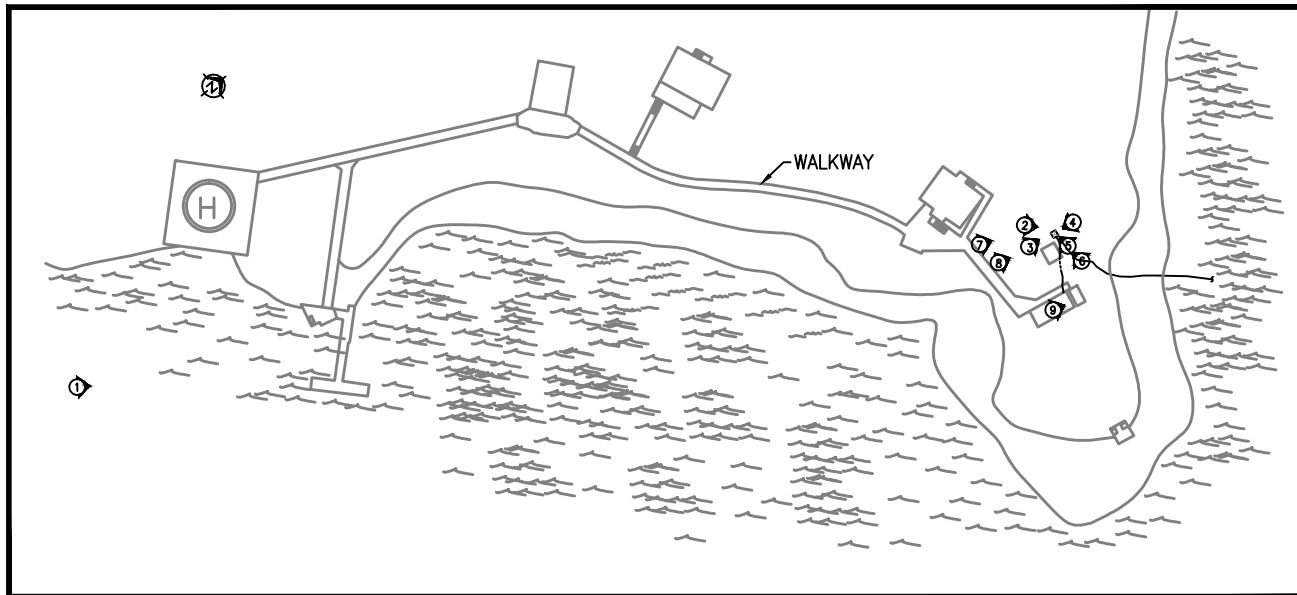
320 - 3605 Glenora Way
Burnaby, B.C. V5G 4X5
Tel: 604-298-4858
Fax: 604-298-8143

NO.	DATE	REVISION
4	06/08/16	ISSUED FOR TENDER
3	02/12/16	ISSUED TO BCH
2	01/29/16	ISSUED FOR REVIEW
4	11/27/15	ISSUED FOR REVIEW

DATE: MAY 30, 2016
DRAWN BY: IR CHECKED BY: CG
SCALE: NTS
ALL RIGHTS RESERVED. THIS DRAWING AND DESIGN REPRESENTED HEREIN IS THE EXCLUSIVE PROPERTY OF PRISM ENGINEERING LTD. AND MAY NOT BE USED OR DUPLICATED WITHOUT PRIOR WRITTEN CONSENT. THE CONTRACTOR SHALL CHECK AND VERIFY ALL DIMENSIONS AND REPORT ALL ERRORS AND OMISSIONS TO THE CONSULTANT. DO NOT SCALE THIS DRAWING.

PROJECT: DRYAD POINT LIGHTSTATION TRANSFORMER REPLACEMENT
DRAWING TITLE: ELECTRICAL RISER / SINGLE LINE DIAGRAM

REV. NO. 4
CCG DWG NO. 15324
SHEET 2 OF 4



1



2

1 KEY PLAN
E-4 SCALE: NTS



3



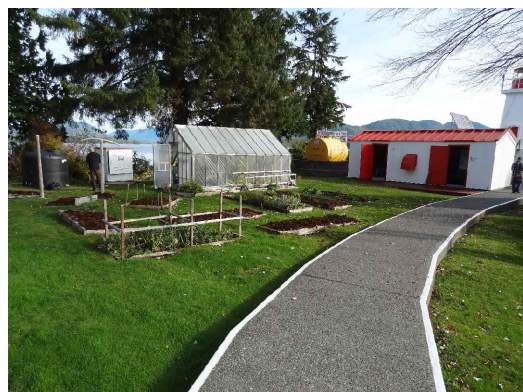
4



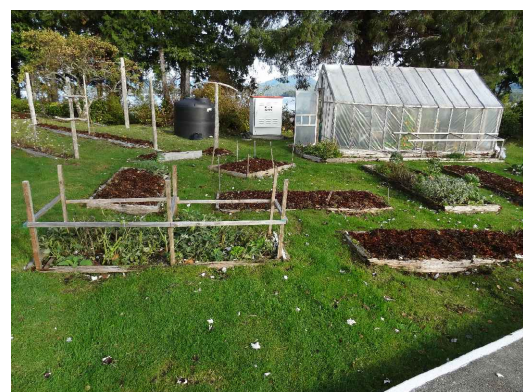
5



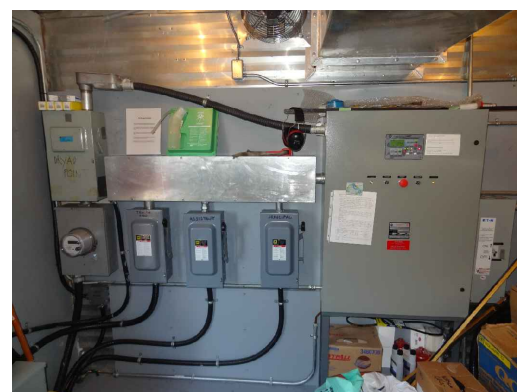
6



7



8



9

CONSULTANT: Project No. 2015446

Prism
ENGINEERING

saving you energy

320-3605 Gilmore Way
Burnaby, B.C. V5G 4X3
Tel: 604-298-8558
Fax: 604-298-8143

NO.	DATE	REVISION
4	06/08/16	ISSUED FOR TENDER
3	02/12/16	ISSUED TO BCH
2	01/29/16	ISSUED FOR REVIEW
4	11/27/15	ISSUED FOR REVIEW

DATE:	MAY 30, 2016
DRAWN BY:	IR
CHECKED BY:	CG
SCALE:	AS NOTED
ALL RIGHTS RESERVED. THIS DRAWING AND DESIGN REPRESENTED HEREIN IS THE EXCLUSIVE PROPERTY OF PRISM ENGINEERING LTD. AND MAY NOT BE USED OR DUPLICATED WITHOUT PRIOR WRITTEN CONSENT. THE CONTRACTOR SHALL CHECK AND VERIFY ALL DIMENSIONS AND REPORT ALL ERRORS AND OMISSIONS TO THE CONSULTANT. DO NOT SCALE THIS DRAWING.	

PROJECT:	DRYAD POINT LIGHTSTATION TRANSFORMER REPLACEMENT
DRAWING TITLE:	KEY PLAN AND PICTURES

REV. NO.	4
CCG DWG NO.	15324
SHEET 4 OF 4	