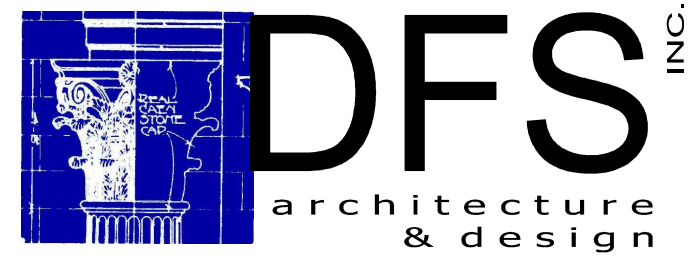


# CONSTRUCTION OF A NEW BUILDING, SEPT-ÎLES, QUÉBEC

## ELECTRICAL



Montréal, QC | 400 boul. de Maisonneuve O. Bur. 500  
Saint John, NB | Montréal (Québec) H3A 1L4  
T: (514) 879-1708 F: (514) 861-6219  
www.dfsarch.com

Dans la province de Québec, les services architecturaux de DFS sont fournis par Fish Pellicier Todd architectes.



Partners in excellence  
Partenaire de génie  
110-340 Catherine Street  
Ottawa ON K2P 2G8  
Phone/66: 613 860-2462  
Fax/66: 613 860-1870  
www.cima.ca



A000566A

### GENERAL LEGEND

- DETAIL 1 ON DRAWING E001
- SECTION A ON DRAWING E001
- REVISION No. 1
- DRAWING NOTE
- MOUNTING HEIGHT
- GROUND
- COMPLETE WITH
- WEATHERPROOF
- ABOVE FINISHED FLOOR
- SUPPLY, INSTALL, AND CONNECT
- TRANSIENT VOLTAGE SURGE SUPPRESSOR
- EXISTING TO REMAIN
- EXISTING TO BE REMOVED
- EXISTING TO BE RELOCATED
- RELOCATED EQUIPMENT
- NEW EQUIPMENT

### POWER DISTRIBUTION

- 15A-120V DUPLEX RECEPTACLE TYPE 5-15R, 'C' DESIGNATES CEILING MOUNTED
- 15A/20A-120V DUPLEX RECEPTACLE TYPE 5-20R
- 15A-120V DEDICATED GROUND FAULT CIRCUIT INTERRUPTER DUPLEX RECEPTACLE TYPE 5-15R, INSTALLATION AS INDICATED
- 15A-120V TWIST-LOCK RECEPTACLE TYPE L5-15R
- 15A-120V DUPLEX RECEPTACLE TYPE 5-15R MOUNTED AT 200mm ABOVE COUNTER, UNLESS OTHERWISE NOTED
- FLOOR FLUSH MOUNTED 15A-120V DUPLEX RECEPTACLE TYPE 5-15R C/W IN CONCRETE SLAB 21mm PVC CONDUIT
- 15A-120V SPLIT DUPLEX RECEPTACLE, TYPE 5-15R CONFIGURATION
- DIRECT ELECTRICAL CONNECTION
- WALL MOUNT GROUND BUS
- 347/600V PANELBOARD
- 120/208V PANELBOARD
- DISCONNECT SWITCH
- MAGNETIC STARTER
- MAGNETIC STARTER / DISCONNECT SWITCH COMBINATION
- JUNCTION AND/OR PULL BOX
- TRANSFORMER
- PUSH BUTTON
- HANDICAP DOOR OPERATOR
- CARBON MONOXIDE DETECTOR
- MOTORISED DAMPER
- BREAKER, SIZE AS INDICATED
- LOAD INTERRUPTING DEVICE
- FUSIBLE DISCONNECT SWITCH
- SINGLE PHASE MOTOR
- THREE PHASE MOTOR
- GENERATOR
- TRANSFORMER
- GROUNDING

### LIGHTING / FIRE ALARM

- 120V SINGLE POLE TOGGLE SWITCH '3' = THREE WAY 'T' = WITH TIMER 'D' = DIMMER CONTROL
- 347V SINGLE POLE TOGGLE SWITCH '3' = THREE WAY 'D' = DIMMER CONTROL
- SCENE CONTROL SWITCH DEVICE
- LIGHTING FIXTURE - WALL MOUNTED, TYPE AS INDICATED
- RECESSED DOWNLIGHT FIXTURE, TYPE AS INDICATED
- SURFACE / SUSPENDED DOWNLIGHT FIXTURE, TYPE AS INDICATED
- WALL MOUNTED 1220mm LED FIXTURE, TYPE AS INDICATED
- SURFACE MOUNT 1220mm LONG LED FIXTURE, TYPE AS INDICATED
- LINEAR STYLE LED FIXTURE, TYPE AS INDICATED
- 305 x 1220mm LED FIXTURE RECESSED IN CEILING, TYPE AS INDICATED
- SURFACE / SUSPENDED MOUNT 305x1220mm LED FIXTURE, TYPE AS INDICATED
- WALL MOUNT RED PILOT LIGHT FIXTURE
- OCCUPANCY SENSOR
- PHOTOCELL, WALL MOUNT
- EXTERIOR LIGHTING FIXTURE, ARROW INDICATES PROJECTION DIRECTION
- WALL MOUNTED EXIT SIGN, SHADED AREA INDICATES FACE
- CEILING MOUNTED EXIT SIGN, ARROW INDICATES DIRECTION, SHADED AREA INDICATES FACE
- WALL MOUNTED EMERGENCY BATTERY UNIT C/W TWO (2) LED HEAD LIGHTS
- FIRE ALARM HORN
- FIRE ALARM HORN / STROBE COMBINATION
- CEILING MOUNTED HEAT DETECTOR
- CEILING MOUNTED SMOKE DETECTOR
- MANUAL PULL STATION
- END LINE RESISTOR

### COMMUNICATIONS

- OUTLET BOX MOUNTED AT 400mm AFF C/W 21mmØ 'EMT' CONDUIT UP TO ACCESSIBLE CEILING SPACE 'C' = CEILING MOUNTED
- OUTLET BOX, MOUNTING HEIGHT AS INDICATED C/W 21mmØ EMT CONDUIT UP TO ACCESSIBLE CEILING SPACE
- FLOOR FLUSH MOUNTED OUTLET BOX C/W IN CONCRETE SLAB 27mmØ PVC CONDUIT OR AS INDICATED
- OUTLET BOX MOUNTED AT 400mm AFF C/W 21mmØ 'EMT' CONDUIT UP TO ACCESSIBLE CEILING SPACE FOR TELEPHONE
- OUTLET BOX WITH MOUNTING HEIGHT AS INDICATED C/W 21mmØ 'EMT' CONDUIT UP TO ACCESSIBLE CEILING SPACE FOR TELEPHONE
- SECURITY DOOR CONDUIT INFRASTRUCTURE, TYPE AS INDICATED
- SECURITY RACEWAY PULL BOX C/W ASSOCIATED CONDUITS
- OUTLET BOX C/W 21mm 'EMT' CONDUIT FOR CLOSED CIRCUIT CAMERA
- OUTLET BOX C/W 21mm 'EMT' CONDUIT FOR CABLEVISION

### HEATING

- RECESSED CEILING MOUNTED UNIT HEATER
- SUSPENDED FORCED FLOW UNIT HEATER
- RECESSED FORCE FLOW HEATER
- ELECTRIC BASEBOARD HEATER WITH RELAY, CAPACITY AS INDICATED
- THERMOSTAT

### ELECTRICAL DRAWING LIST:

- E000 DRAWING LIST AND LEGEND
- E001 SITE PLAN - ELECTRICAL SERVICES AND SINGLELINE DIAGRAM
- E100 GROUND FLOOR - LIGHTING AND EMERGENCY EXIT
- E101 GROUND FLOOR - POWER AND FIRE ALARM
- E200 ROOF PLAN
- E300 MISCELLANEOUS DETAILS - PART 1
- E301 MISCELLANEOUS DETAILS - PART 2

plan-repère key plan

L'entrepreneur doit vérifier les dimensions des dessins et les conditions de chantier avant de débiter les travaux. Aviser les professionnels de toutes divergences aux documents de construction. Ne pas mesurer sur les dessins.

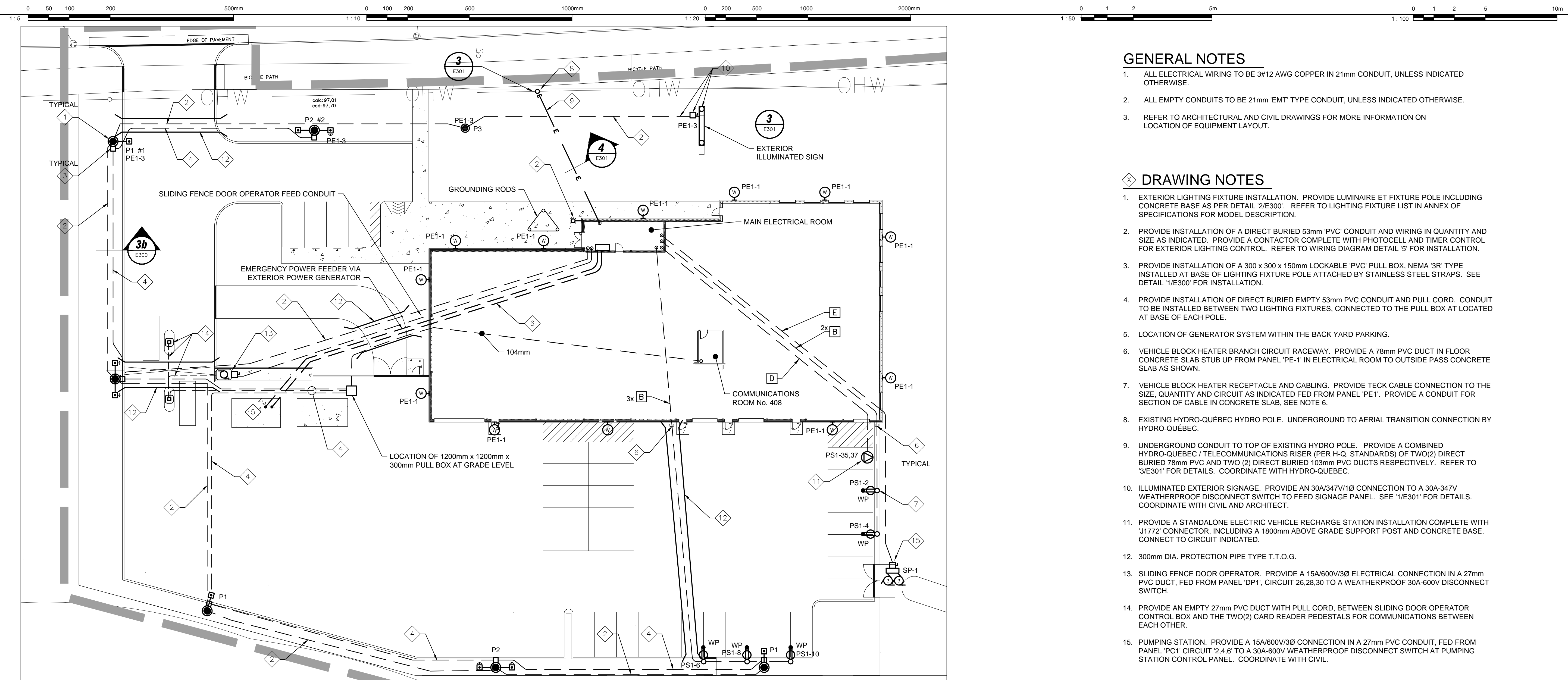

E	Issued for Tender	Aug. 4, 2016
D	Issued for 99% review	Jun. 24, 2016
C	Preliminary Drawings for Coordination	Jun. 8, 2016
B	Issued for 50% review	Apr. 29, 2016
A	Issued for preliminary review	Feb. 23, 2016
no.	description	date

### RÉVISION

project project  
**New Building Construction,  
Sept-Îles, Québec**  
1501, boulevard Laure, Sept-Îles, QC

### DRAWING LIST AND LEGEND

conception	design	ho. dossier	project no.
K. SELLATHURAI	DFS 5001	CIMA A000566A	
dessiné	drawn	fichier DAO	CAD file
Y. FARMER			
approuvé	approved	dossier client	client file
S. LAVOIE			DFS
échelle	scale	imprimé	plot date
AS SHOWN			
no. page	sheet number		rev
	E000		



**GENERAL NOTES**

- ALL ELECTRICAL WIRING TO BE #12 AWG COPPER IN 21mm CONDUIT, UNLESS INDICATED OTHERWISE.
- ALL EMPTY CONDUITS TO BE 21mm 'EMT' TYPE CONDUIT, UNLESS INDICATED OTHERWISE.
- REFER TO ARCHITECTURAL AND CIVIL DRAWINGS FOR MORE INFORMATION ON LOCATION OF EQUIPMENT LAYOUT.

**DRAWING NOTES**

- EXTERIOR LIGHTING FIXTURE INSTALLATION. PROVIDE LUMINAIRE ET FIXTURE POLE INCLUDING CONCRETE BASE AS PER DETAIL '2/E300'. REFER TO LIGHTING FIXTURE LIST IN ANNEX OF SPECIFICATIONS FOR MODEL DESCRIPTION.
- PROVIDE INSTALLATION OF A DIRECT BURIED 53mm 'PVC' CONDUIT AND WIRING IN QUANTITY AND SIZE AS INDICATED. PROVIDE A CONTACTOR COMPLETE WITH PHOTOCELL AND TIMER CONTROL FOR EXTERIOR LIGHTING CONTROL. REFER TO WIRING DIAGRAM DETAIL '5' FOR INSTALLATION.
- PROVIDE INSTALLATION OF A 300 x 300 x 150mm LOCKABLE 'PVC' PULL BOX, NEMA '3R' TYPE INSTALLED AT BASE OF LIGHTING FIXTURE POLE ATTACHED BY STAINLESS STEEL STRAPS. SEE DETAIL '1/E300' FOR INSTALLATION.
- PROVIDE INSTALLATION OF DIRECT BURIED EMPTY 53mm PVC CONDUIT AND PULL CORD. CONDUIT TO BE INSTALLED BETWEEN TWO LIGHTING FIXTURES, CONNECTED TO THE PULL BOX AT LOCATED AT BASE OF EACH POLE.
- LOCATION OF GENERATOR SYSTEM WITHIN THE BACK YARD PARKING.
- VEHICLE BLOCK HEATER BRANCH CIRCUIT RACEWAY. PROVIDE A 78mm PVC DUCT IN FLOOR CONCRETE SLAB STUB UP FROM PANEL 'PE-1' IN ELECTRICAL ROOM TO OUTSIDE PASS CONCRETE SLAB AS SHOWN.
- VEHICLE BLOCK HEATER RECEPTACLE AND CABLING. PROVIDE TECK CABLE CONNECTION TO THE SIZE, QUANTITY AND CIRCUIT AS INDICATED FED FROM PANEL 'PE-1'. PROVIDE A CONDUIT FOR SECTION OF CABLE IN CONCRETE SLAB, SEE NOTE 6.
- EXISTING HYDRO-QUÉBEC HYDRO POLE. UNDERGROUND TO AERIAL TRANSITION CONNECTION BY HYDRO-QUÉBEC.
- UNDERGROUND CONDUIT TO TOP OF EXISTING HYDRO POLE. PROVIDE A COMBINED HYDRO-QUÉBEC / TELECOMMUNICATIONS RISER (PER H-Q. STANDARDS) OF TWO(2) DIRECT BURIED 78mm PVC AND TWO (2) DIRECT BURIED 103mm PVC DUCTS RESPECTIVELY. REFER TO '3/E301' FOR DETAILS. COORDINATE WITH HYDRO-QUÉBEC.
- ILLUMINATED EXTERIOR SIGNAGE. PROVIDE AN 30A/347V/1Ø CONNECTION TO A 30A-347V WEATHERPROOF DISCONNECT SWITCH TO FEED SIGNAGE PANEL. SEE '1/E301' FOR DETAILS. COORDINATE WITH CIVIL AND ARCHITECT.
- PROVIDE A STANDALONE ELECTRIC VEHICLE RECHARGE STATION INSTALLATION COMPLETE WITH '1772' CONNECTOR, INCLUDING A 1800mm ABOVE GRADE SUPPORT POST AND CONCRETE BASE. CONNECT TO CIRCUIT INDICATED.
- 300mm DIA. PROTECTION PIPE TYPE T.T.O.G.
- SLIDING FENCE DOOR OPERATOR. PROVIDE A 15A/600V/3Ø ELECTRICAL CONNECTION IN A 27mm PVC DUCT, FED FROM PANEL 'DP1', CIRCUIT 26,28,30 TO A WEATHERPROOF 30A-600V DISCONNECT SWITCH.
- PROVIDE AN EMPTY 27mm PVC DUCT WITH PULL CORD, BETWEEN SLIDING DOOR OPERATOR CONTROL BOX AND THE TWO(2) CARD READER PEDESTALS FOR COMMUNICATIONS BETWEEN EACH OTHER.
- PUMPING STATION. PROVIDE A 15A/600V/3Ø CONNECTION IN A 27mm PVC CONDUIT, FED FROM PANEL 'PC1' CIRCUIT '2,4,6' TO A 30A-600V WEATHERPROOF DISCONNECT SWITCH AT PUMPING STATION CONTROL PANEL. COORDINATE WITH CIVIL.

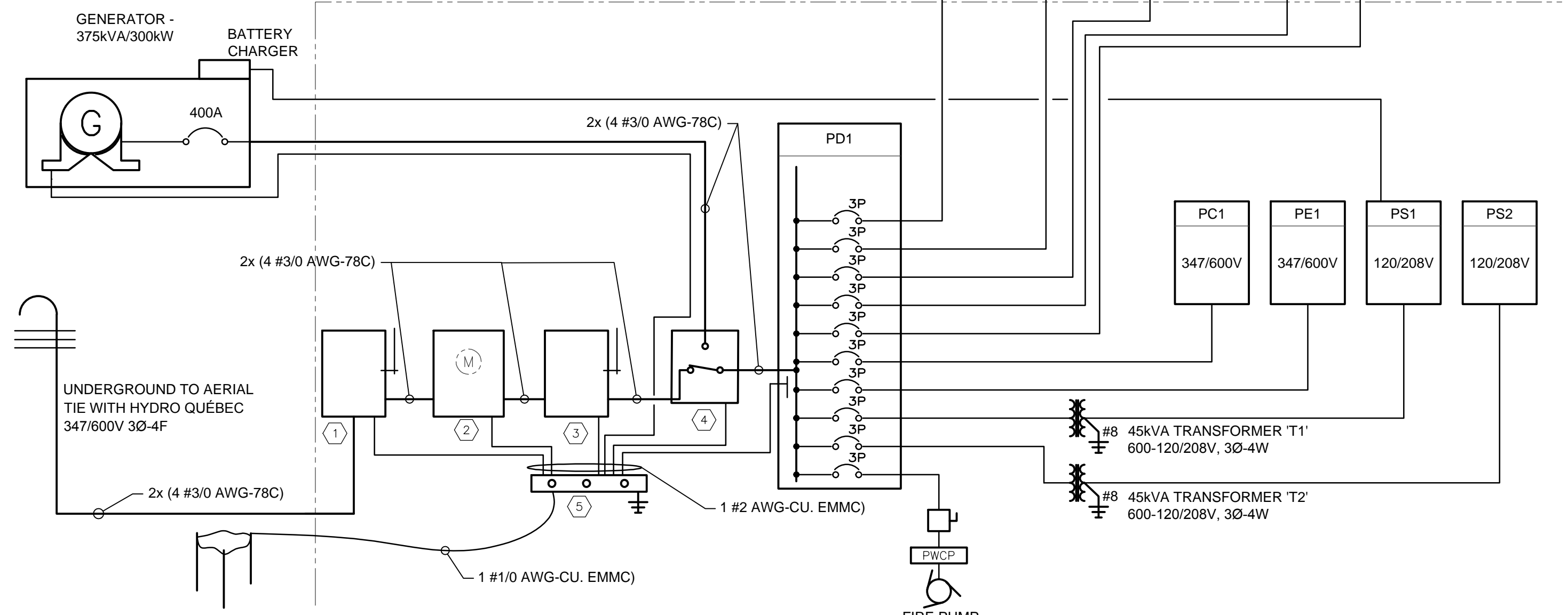
**CABLE AND CONDUIT SIZE SCHEDULE**

- A** 3 #12 TECK CABLE
- B** 3 #10 TECK CABLE
- C** 3 #8 TECK CABLE
- D** 3 #6 TECK CABLE
- E** 2 #8 + GROUND IN 53mm PVC CONDUIT

**1 SITE PLAN - UNDERGROUND ELECTRICAL AND LIGHTING**

SCALE: 1 / 100

- MAIN DISCONNECT SWITCH - 400A/F - 600A/3/60
- HYDRO-QUÉBEC TRANSFORMER/METER CABINET - 900 x 900 x 300mm
- PROVIDE 19mm PLYWOOD BACK BOARD FOR H-Q CABINET. REFER TO H-Q. BLUE BOOK, ILLUSTRATION 7.01.
- 400A UNFUSED DISCONNECT SWITCH - 600V/3/60
- 400A AUTOMATIC TRANSFER SWITCH
- GROUNDING BUS BAR

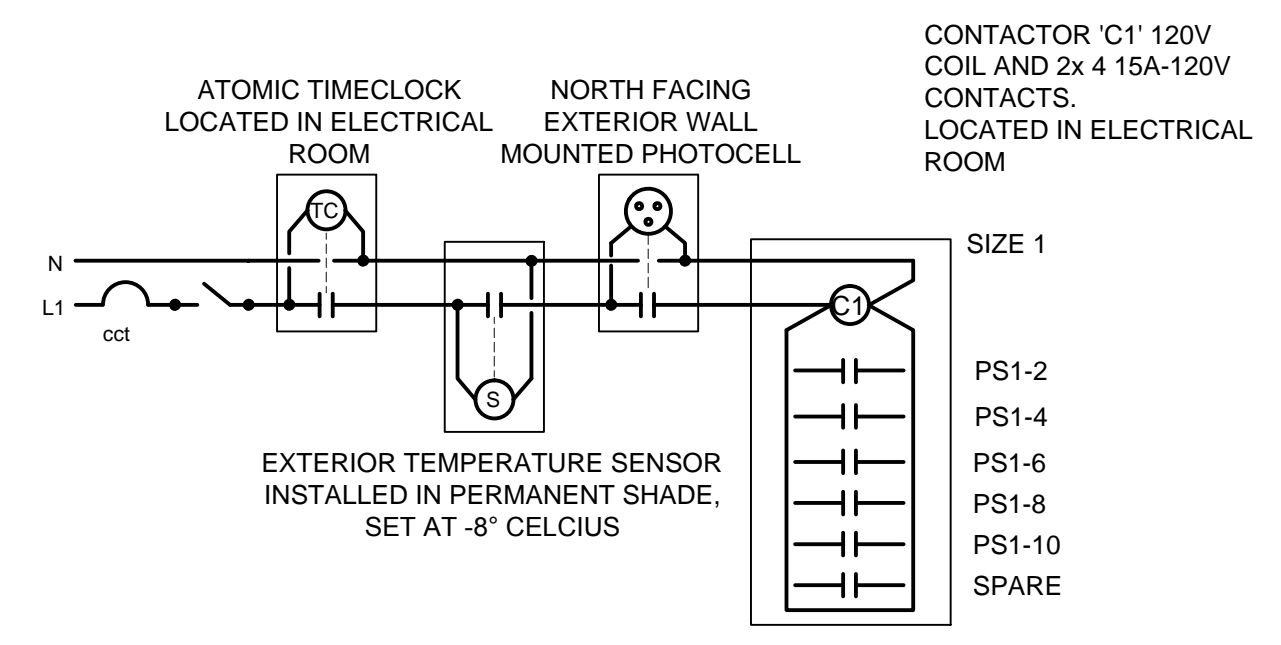


**2 PRIMARY ELECTRICAL DISTRIBUTION AND EXTERIOR LIGHTING**

NOT TO SCALE

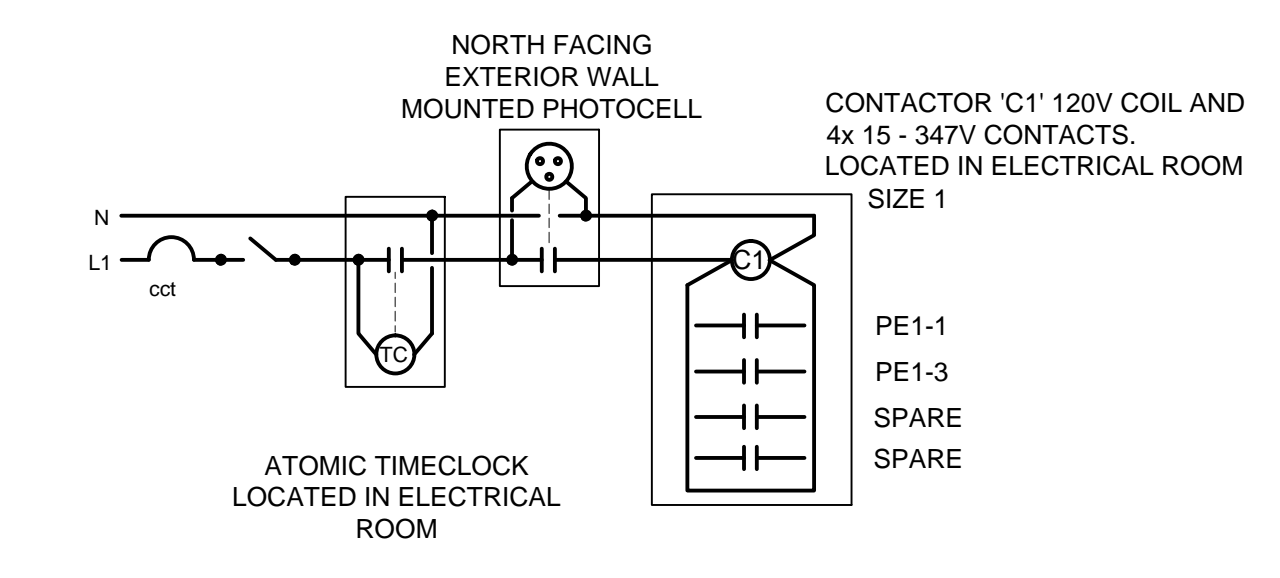
**3 VEHICLE BLOCK HEATER CONTROL WIRING SCHEMATIC**

NOT TO SCALE



**4 EXTERIOR LIGHTING CONTROL SCHEMATIC**

NOT TO SCALE



**DFS**  
architecture & design

Montréal, QC 400 boul. de Maisonneuve O. Bur. 500  
Saint John, NB Montréal (Québec) H3A 1L4  
T: (514) 879-1708 F: (514) 861-6219  
www.dfsarch.com

Dans la province de Québec, les services architecturaux de DFS sont fournis par Fish Pellicier Todd architectes.

**CLELAND JARDINE**  
ENGINEERING LTD.

**CIMA**  
Partners in excellence  
Partenaire de génie

110-340 Catherine Street  
Ottawa ON K2P 2S8  
Phone: 613 860-2462  
Fax: 613 860-1670  
www.cima.ca

no.	description	date
E	Issued for Tender	Aug. 4, 2016
D	Issued for 99% review	Jun. 24, 2016
C	Preliminary Drawings for Coordination	Jun. 8, 2016
B	Issued for 50% review	Apr. 29, 2016
A	Issued for preliminary review	Feb. 23, 2016

REVISION

project

**New Building Construction, Sept-Îles, Québec**

1501, boulevard Laure, Sept-Îles, QC

dessin drawing

**GROUND FLOOR PLAN POWER and FIRE ALARM**

conception	design	no. dossier	project no.
K. SELLATHURAI	DFS 5001	CIMA A000566A	
dessiné	drawn	fichier DAO	CAD file
Y. FARMER			
approuvé	approved	dossier client	client file
S. LAVOIE			DFS
échelle	scale	imprimé	plot date
AS SH AS NOTED			
no. page	sheet number		rev
			E001

16/02/2016 4:20:55 PM

**DFS**  
architecture & design

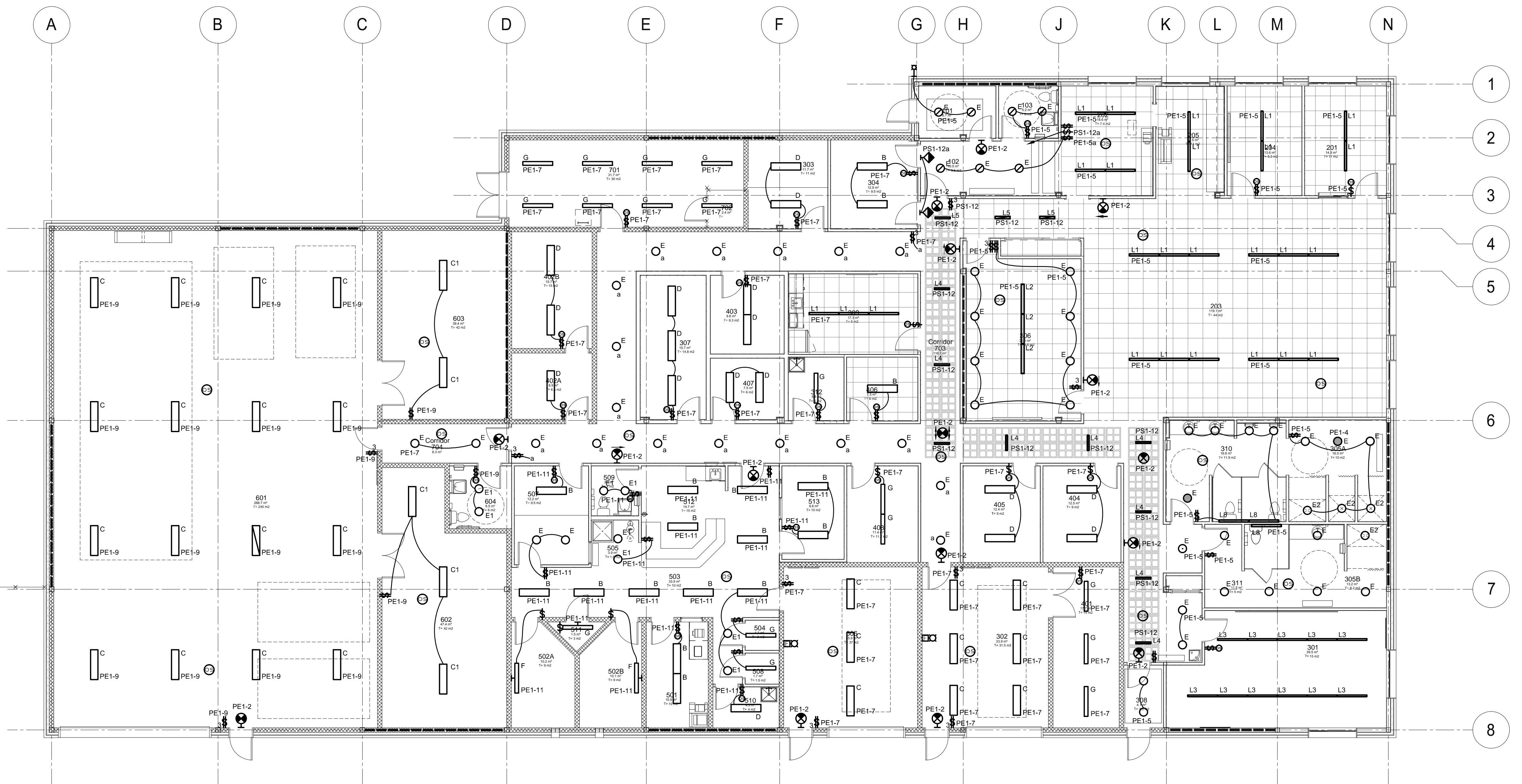
Montréal, QC 400 boul. de Maisonneuve O. Bur. 500  
Saint John, NB Montréal (Québec) H3A 1L4  
T: (514) 879-1708 F: (514) 861-6219  
www.dfsarch.com

Dans la province de Québec, les services architecturaux de DFS sont fournis par Fish Pellicier Todd architectes.

**CLELAND JARDINE**  
ENGINEERING LTD.

**CIMA** A000566A  
Partners in excellence  
Partenaire de génie

110-340 Catherine Street  
Ottawa ON K2P 2G8  
Phone: 613 860-2462  
Fax: 613 860-1670  
www.cima.ca



**GROUND FLOOR PLAN - LIGHTING**  
SCALE 1:100

**GENERAL NOTES**

- ALL ELECTRICAL WIRING TO BE #12 AWG COPPER IN 21mm CONDUIT, UNLESS INDICATED OTHERWISE.
- ALL EMPTY CONDUITS TO BE 21mm 'EMT' TYPE CONDUIT, UNLESS INDICATED OTHERWISE.
- REFER TO ARCHITECTURAL DRAWINGS FOR LOCATION AND MONTING HEIGHT OF LIGHTING FIXTURES AND MATERIAL LAYOUT.

**NOTES DU DESSIN**

- PROVIDE THE LIGHTING FIXTURES SHOWN ON DRAWING AND ALL ASSOCIATED WIRING AND CONDUIT, INCLUDING SWITCHING AND/OR OCCUPATION SENSOR DEVICES. CONNECT TO CIRCUIT INDICATED.
- PROVIDE EXIT SIGN DEVICES WHERE SHOWN ON DRAWING. CONNECT TO A LOCKED CIRCUIT BREAKER IN ELECTRICAL PANEL AND CIRCUIT INDICATED.

plan-repère key plan  
socau stamp

L'entrepreneur doit vérifier les dimensions des dessins et les conditions de chantier avant de débiter les travaux. Aviser les professionnels de toutes divergences aux documents de construction. Ne pas mesurer sur les dessins.

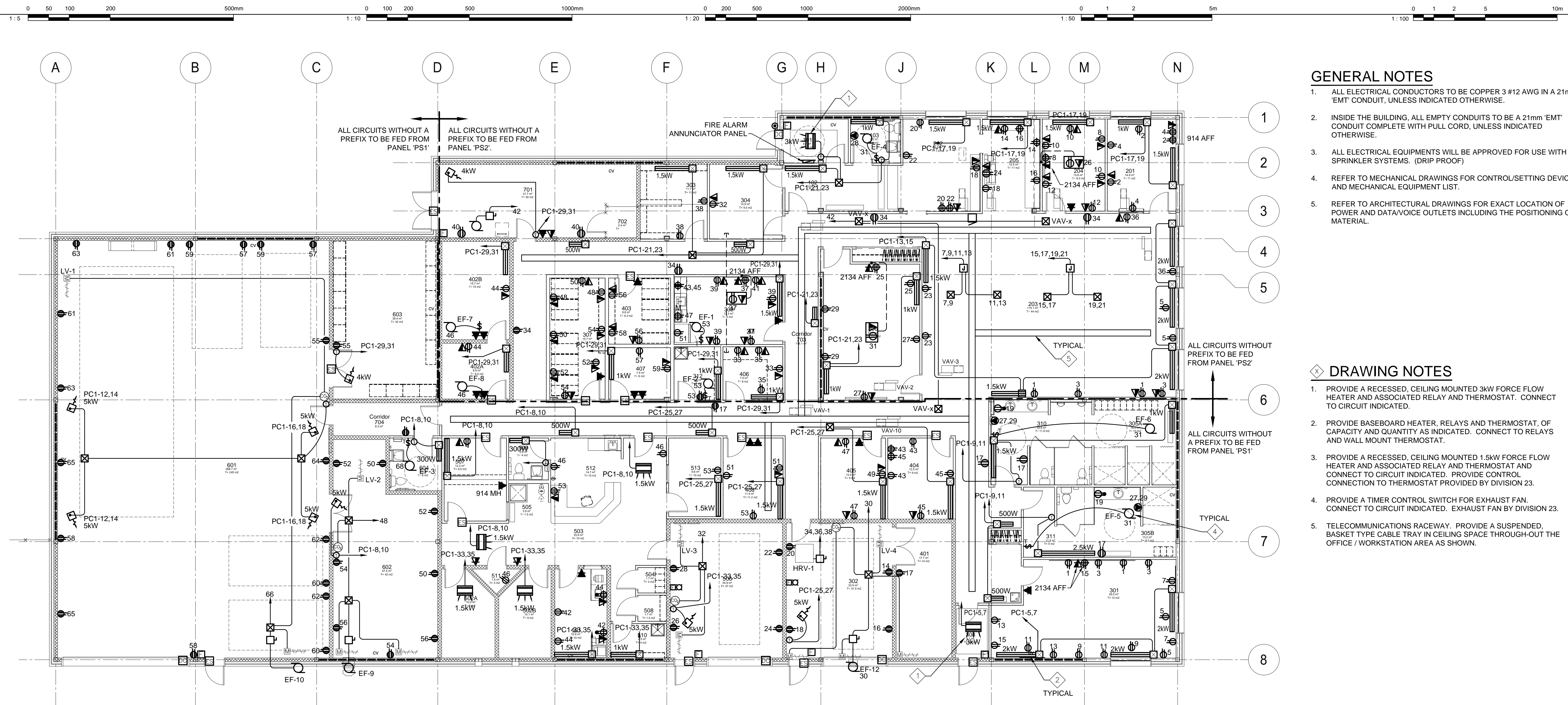
no.	description	date
E	Issued for Tender	Aug. 4, 2016
D	Issued for 99% review	Jun. 24, 2016
C	Preliminary Drawings for Coordination	Jun. 8, 2016
B	Issued for 50% review	Apr. 29, 2016
A	Issued for preliminary review	Feb. 23, 2016

project project  
**New Building Construction, Sept-Îles, Québec**  
1501, boulevard Laure, Sept-Îles, QC

dessin drawing  
**GROUND FLOOR LIGHTING and EMERGENCY EXIT**

conception	design	ho. dossier	project no.
		DFS 5001	CIMA A000566A
dessiné	drawn	dessin DAO	CAD file
approuvé	approved	dossier client	client file
			DFS
échelle	scale	imprimé	plot date
AS SHOWN			
no. page	sheet number	rev	
		<b>E100</b>	

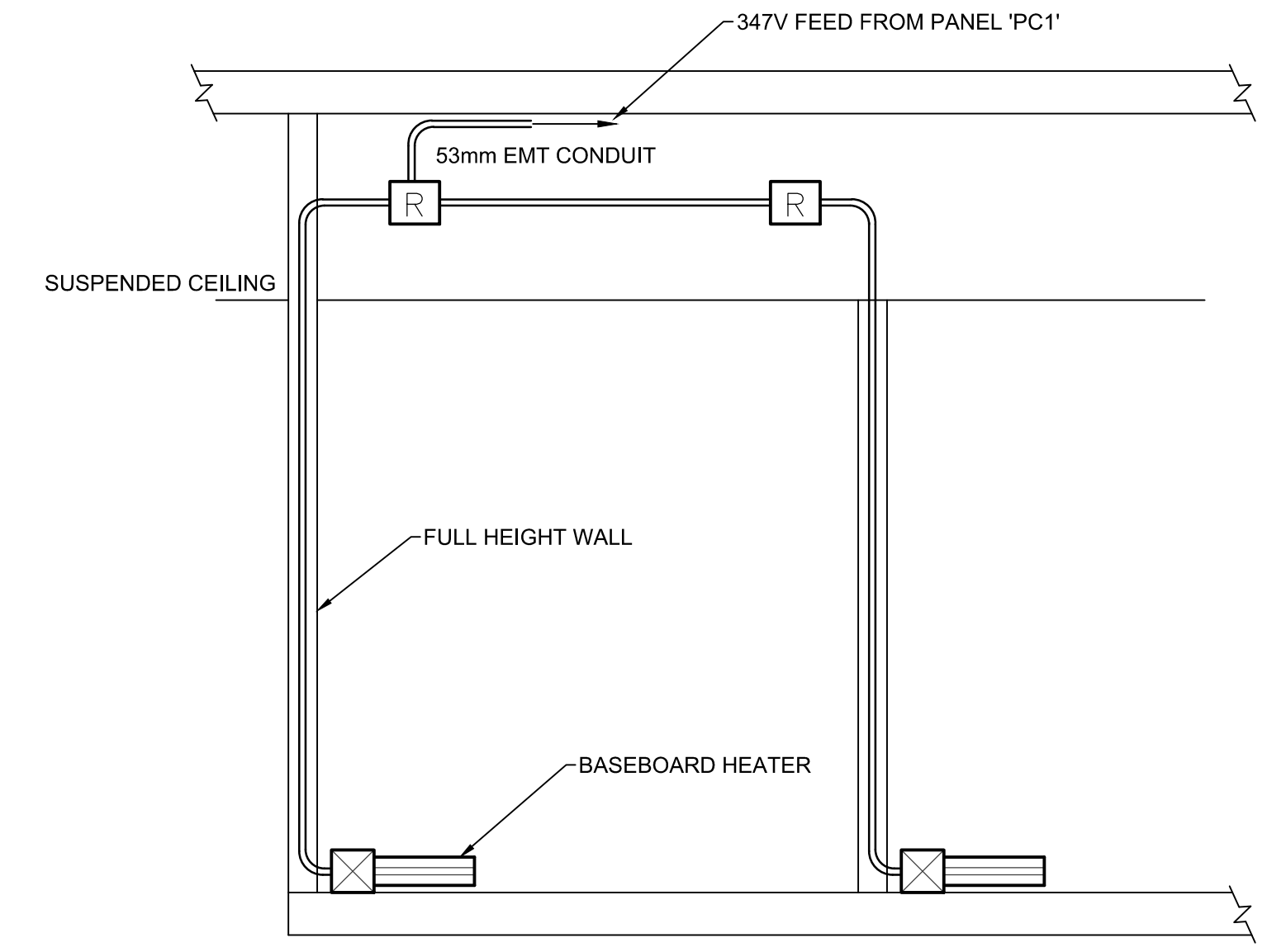
16/02/2016 4:20:55 PM



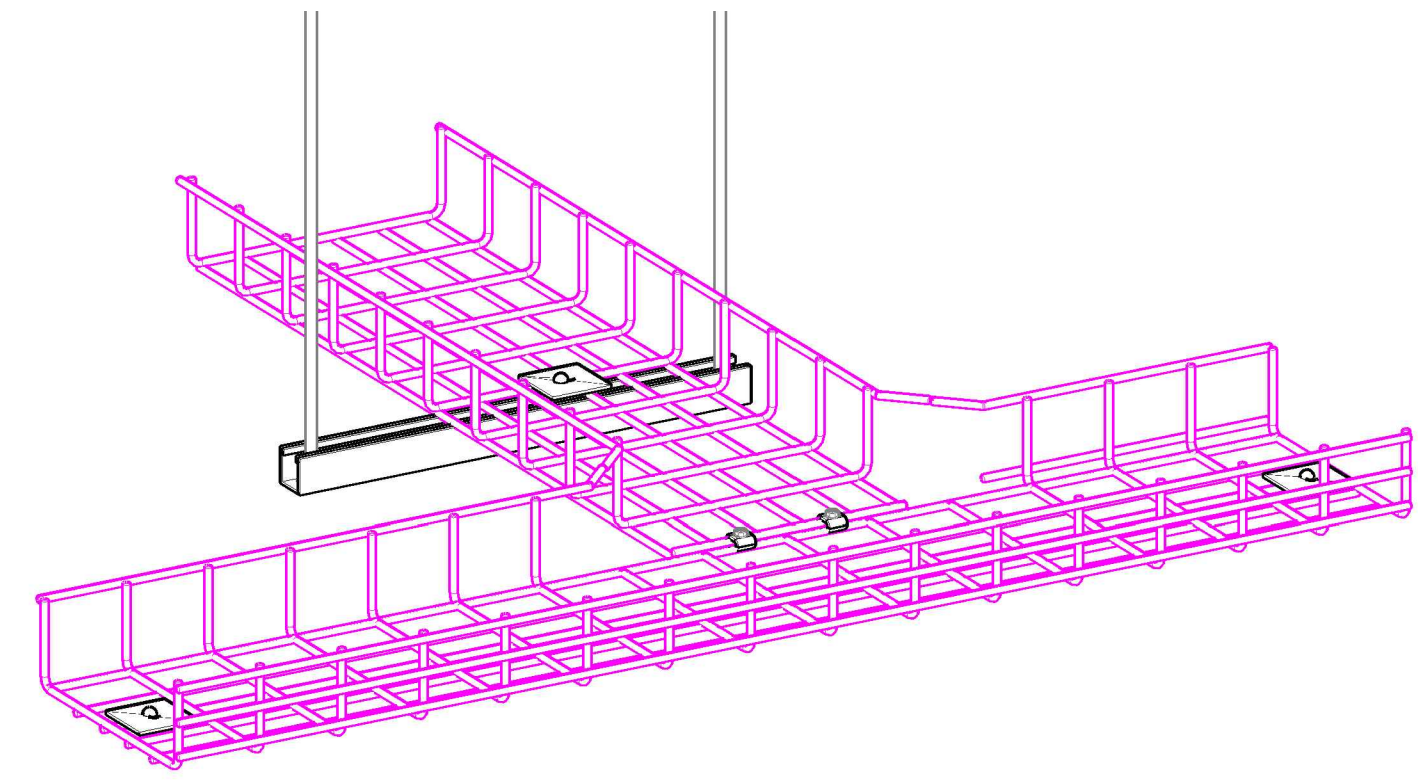
- ### GENERAL NOTES
- ALL ELECTRICAL CONDUCTORS TO BE COPPER 3 #12 AWG IN A 21mm 'EMT' CONDUIT, UNLESS INDICATED OTHERWISE.
  - INSIDE THE BUILDING, ALL EMPTY CONDUITS TO BE A 21mm 'EMT' CONDUIT COMPLETE WITH PULL CORD, UNLESS INDICATED OTHERWISE.
  - ALL ELECTRICAL EQUIPMENTS WILL BE APPROVED FOR USE WITH SPRINKLER SYSTEMS. (DRIP PROOF)
  - REFER TO MECHANICAL DRAWINGS FOR CONTROL/SETTING DEVICES AND MECHANICAL EQUIPMENT LIST.
  - REFER TO ARCHITECTURAL DRAWINGS FOR EXACT LOCATION OF POWER AND DATA/VOICE OUTLETS INCLUDING THE POSITIONING OF MATERIAL.

- ### DRAWING NOTES
- PROVIDE A RECESSED, CEILING MOUNTED 3kW FORCE FLOW HEATER AND ASSOCIATED RELAY AND THERMOSTAT. CONNECT TO CIRCUIT INDICATED.
  - PROVIDE BASEBOARD HEATER, RELAYS AND THERMOSTAT, OF CAPACITY AND QUANTITY AS INDICATED. CONNECT TO RELAYS AND WALL MOUNT THERMOSTAT.
  - PROVIDE A RECESSED, CEILING MOUNTED 1.5kW FORCE FLOW HEATER AND ASSOCIATED RELAY AND THERMOSTAT AND CONNECT TO CIRCUIT INDICATED. PROVIDE CONTROL CONNECTION TO THERMOSTAT PROVIDED BY DIVISION 23.
  - PROVIDE A TIMER CONTROL SWITCH FOR EXHAUST FAN. CONNECT TO CIRCUIT INDICATED. EXHAUST FAN BY DIVISION 23.
  - TELECOMMUNICATIONS RACEWAY. PROVIDE A SUSPENDED, BASKET TYPE CABLE TRAY IN CEILING SPACE THROUGH-OUT THE OFFICE / WORKSTATION AREA AS SHOWN.

**1** GROUND FLOOR - POWER DISTRIBUTION  
SCALE: 1 / 100



**2** BASEBOARD HEATER CONNECTION DETAIL  
NOT TO SCALE



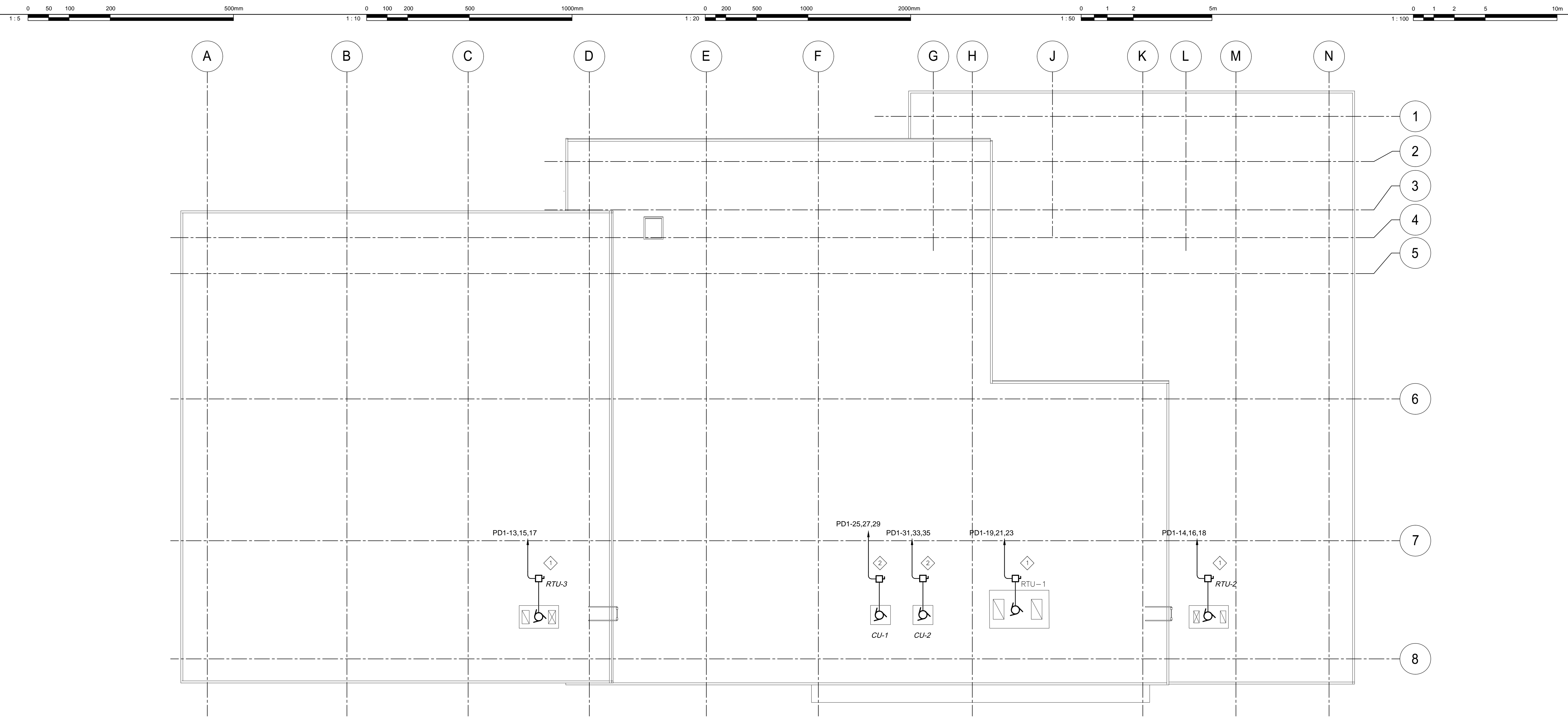
**3** BASKET TYPE CABLE TRAY SYSTEM DETAIL  
NOT TO SCALE

plan-repère	key plan	soceau	stamp
L'entrepreneur doit vérifier les dimensions des dessins et les conditions de chantier avant de débiter les travaux. Aviser les professionnels de toutes divergences aux documents de construction. Ne pas mesurer sur les dessins.			
E	Issued for Tender	Aug. 4, 2016	
D	Issued for 99% review	Jun. 24, 2016	
C	Preliminary Drawings for Coordination	Jun. 8, 2016	
B	Issued for 50% review	Apr. 29, 2016	
A	Issued for preliminary review	Feb. 23, 2016	
no.	description	date	
RÉVISION			

project  
**New Building Construction, Sept-Îles, Québec**  
1501, boulevard Laure, Sept-Îles, QC

drawing			
<b>GROUND FLOOR POWER AND FIRE ALARM</b>			
conception	design	no. dossier	project no.
		DFS 5001	CIMA A000566A
dessiné	drawn	dessin DAO	CAD file
approuvé	approved	dossier client	client file
			DFS
échelle	scale	imprimé	plot date
AS SHOWN			
no. page	sheet number	rev	
		<b>E101</b>	

16/02/2016 4:20:55 PM



**ROOF TOP EQUIPMENT LAYOUT - POWER**  
SCALE 1:100

**GENERAL NOTES**

1. ALL ELECTRICAL WIRING TO BE 3 #12 AWG COPPER IN 21mm CONDUIT, UNLESS INDICATED OTHERWISE.
2. ALL EMPTY CONDUITS TO BE 21mm EMT TYPE CONDUIT, UNLESS INDICATED OTHERWISE.
3. REFER TO MECHANICAL DRAWINGS FOR MECHANICAL EQUIPMENT SCHEDULE AND CONTROLS.

**DRAWING NOTES**

1. PROVIDE AN ELECTRICAL CONNECTION FOR ROOFTOP UNITS 'RTU-1', 'RTU-2' AND 'RTU-3' COMPLETE WITH ALL ASSOCIATED WIRING AND CONDUITS. CONNECT TO CIRCUITS INDICATED.
2. PROVIDE AN ELECTRICAL CONNECTION FOR ROOFTOP CONDENSOR UNITS 'CU-1' AND 'CU-2' COMPLETE WITH ALL ASSOCIATED WIRING AND CONDUITS. CONNECT TO CIRCUITS INDICATED.

**DFS**  
architecture & design

Montréal, QC | 400 boul. de Maisonneuve O. Bur. 500  
Saint John, NB | Montréal (Québec) H3A 1L4  
T: (514) 879-1708 F: (514) 861-6219  
www.dfsarch.com

Dans la province de Québec, les services architecturaux de DFS sont fournis par Fish Pellicier Todd architectes.

**CLELAND JARDINE**  
ENGINEERING LTD.

110-340 Catherine Street  
Ottawa ON K2P 2G8  
Phone: 613 860-2462  
Fax: 613 860-1670  
www.cima.ca

**CIMA** A000566A  
Partners in excellence  
Partenaire de génie

plan-repère key plan  
socau stamp

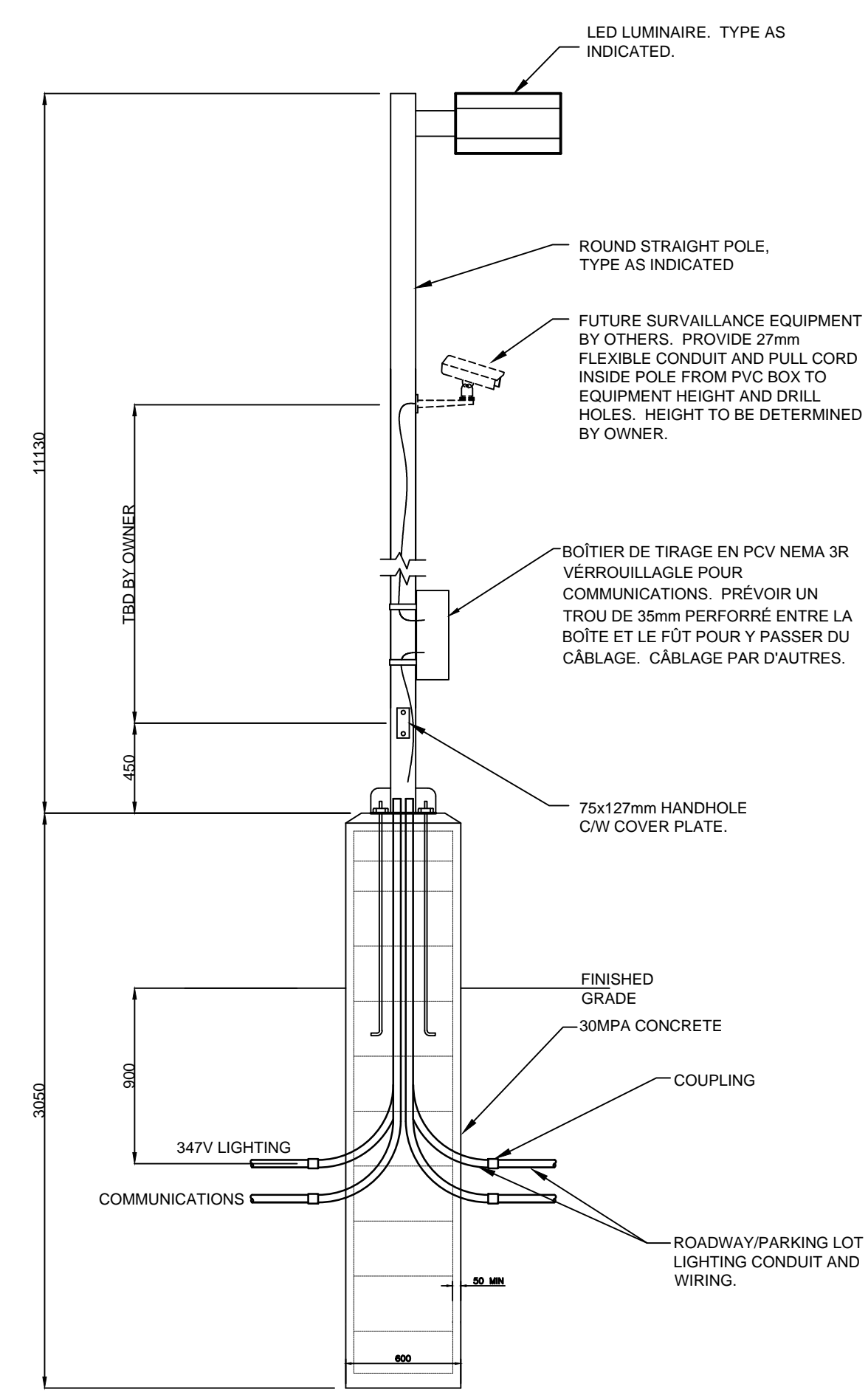
L'entrepreneur doit vérifier les dimensions des dessins et les conditions de chantier avant de débiter les travaux. Aviser les professionnels de toutes divergences aux documents de construction. Ne pas mesurer sur les dessins.

no.	description	date
RÉVISION		

project project  
**New Building Construction, Sept-Îles, Québec**  
1501, boulevard Laure, Sept-Îles, QC

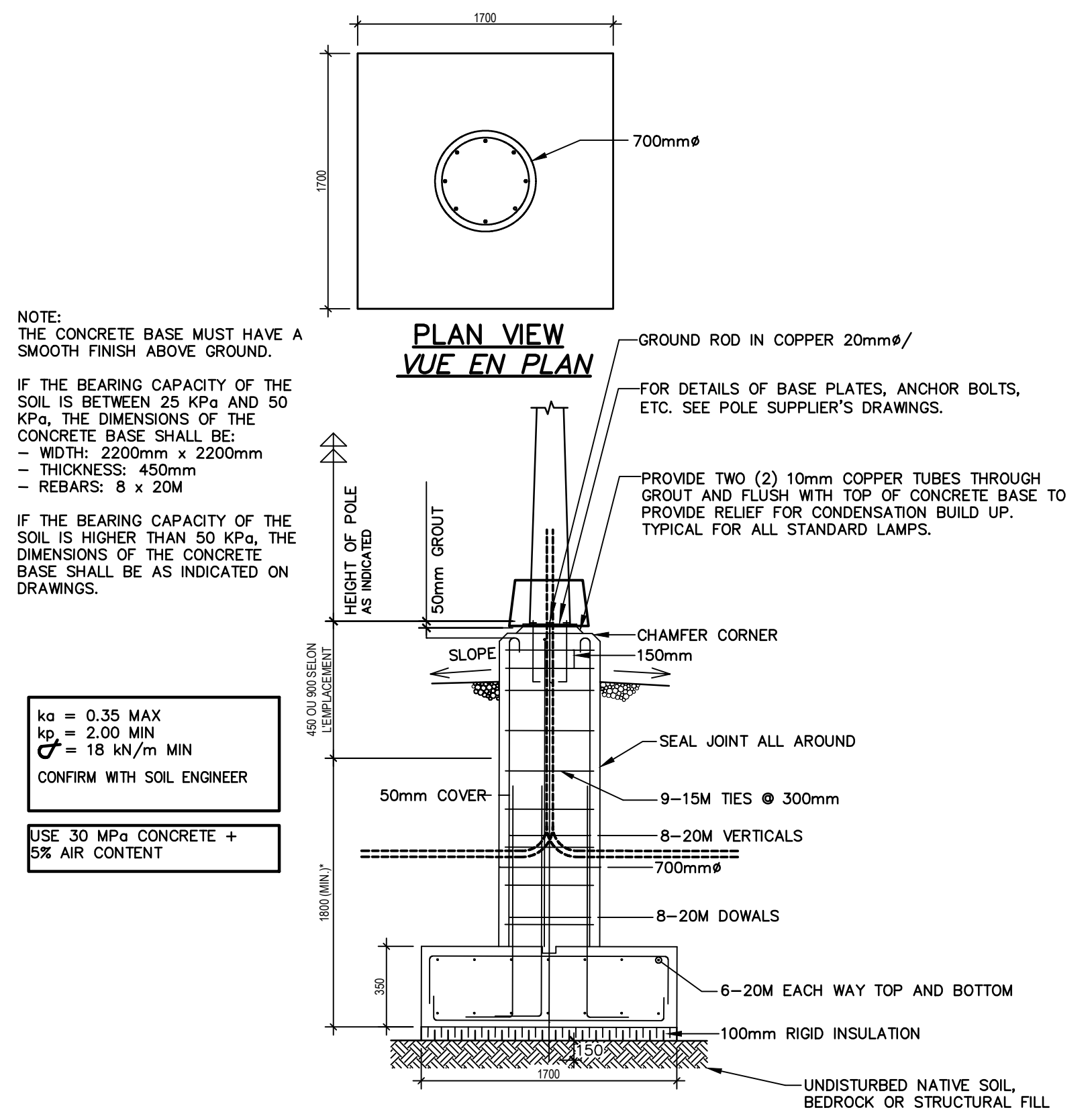
<b>ROOF PLAN POWER</b>			
conception	design	ho. dossier	project no.
		DFS 5001	CIMA A000566A
dessiné	drawn	fichier DAO	CAD file
approuvé	approved	dossier client	client file
		DFS	DFS
échelle	scale	imprimé	plot date
AS SHOWN			
no. page	sheet number	rev	
<b>E200</b>			

16/02/2016 4:20:55 PM



NOTE: PROVIDE 19x300mm COPPER CLAD GROUNDING ROD C/W #8 BARE COPPER CONDUCTOR.

**1** TYPICAL PARKING LIGHTING FIXTURE DETAIL  
NOT TO SCALE

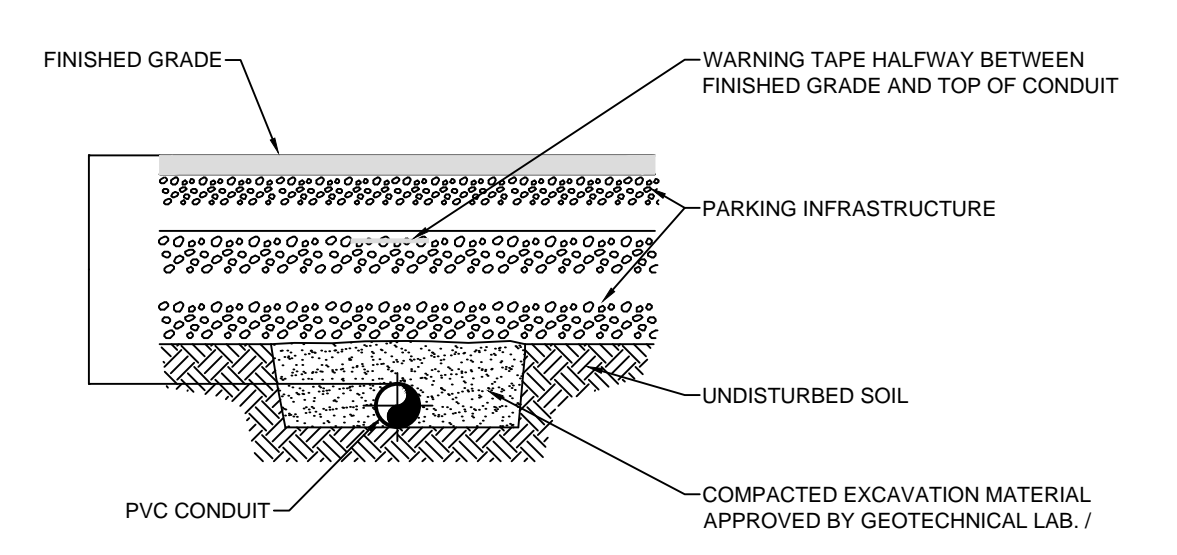


NOTE: THE CONCRETE BASE MUST HAVE A SMOOTH FINISH ABOVE GROUND.  
IF THE BEARING CAPACITY OF THE SOIL IS BETWEEN 25 KPa AND 50 KPa, THE DIMENSIONS OF THE CONCRETE BASE SHALL BE:  
- WIDTH: 2200mm x 2200mm  
- THICKNESS: 450mm  
- REBARS: 8 x 20M  
IF THE BEARING CAPACITY OF THE SOIL IS HIGHER THAN 50 KPa, THE DIMENSIONS OF THE CONCRETE BASE SHALL BE AS INDICATED ON DRAWINGS.

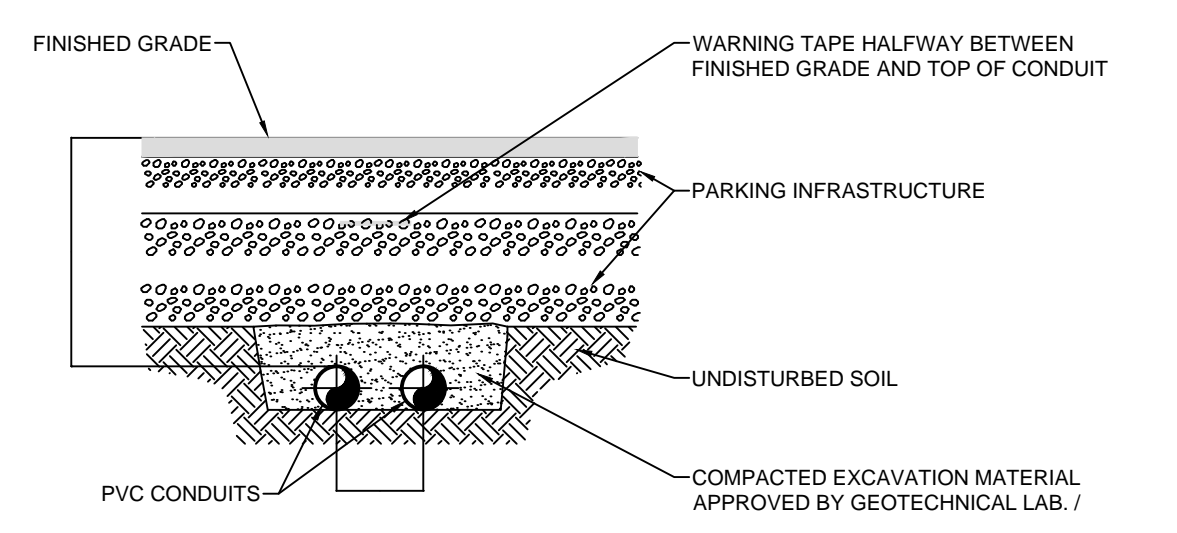
$k_a = 0.35 \text{ MAX}$   
 $k_p = 2.00 \text{ MIN}$   
 $C = 18 \text{ kN/m MIN}$   
CONFIRM WITH SOIL ENGINEER

USE 30 MPa CONCRETE + 5% AIR CONTENT

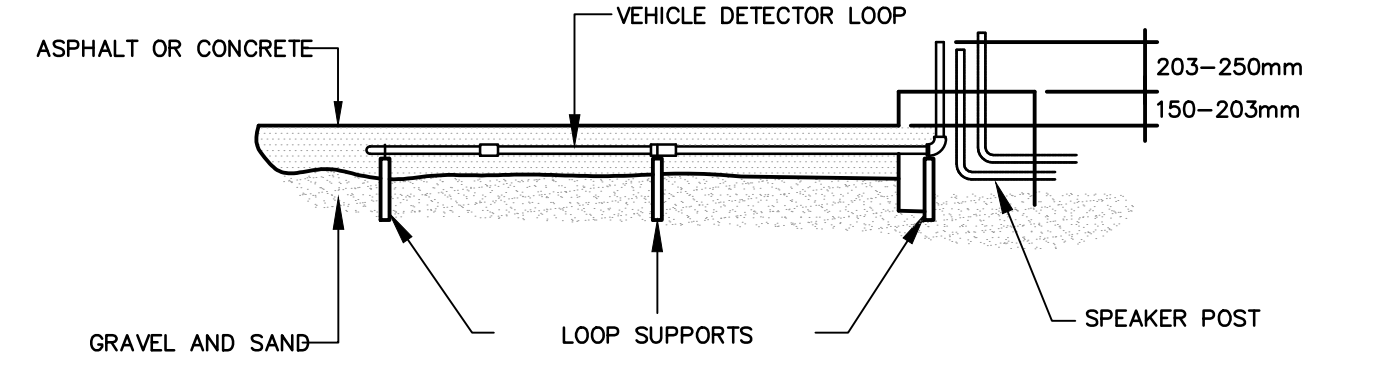
**2** TYPICAL PARKING LIGHTING CONCRETE BASE DETAIL  
NOT TO SCALE



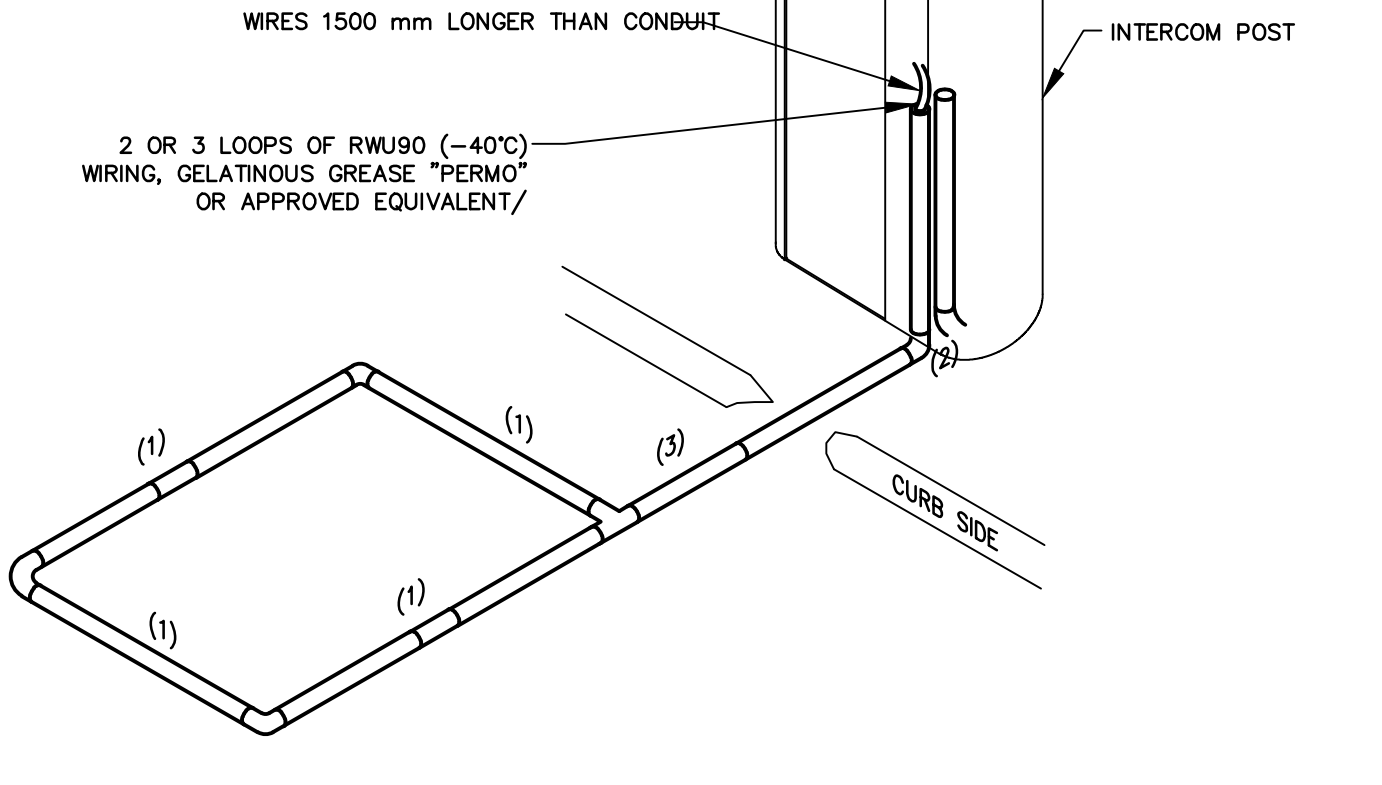
**3a** TRENCH DETAIL - 1 DIRECT BURIED CONDUIT  
NOT TO SCALE



**3b** TRENCH DETAIL - 2 DIRECT BURIED CONDUITS  
NOT TO SCALE

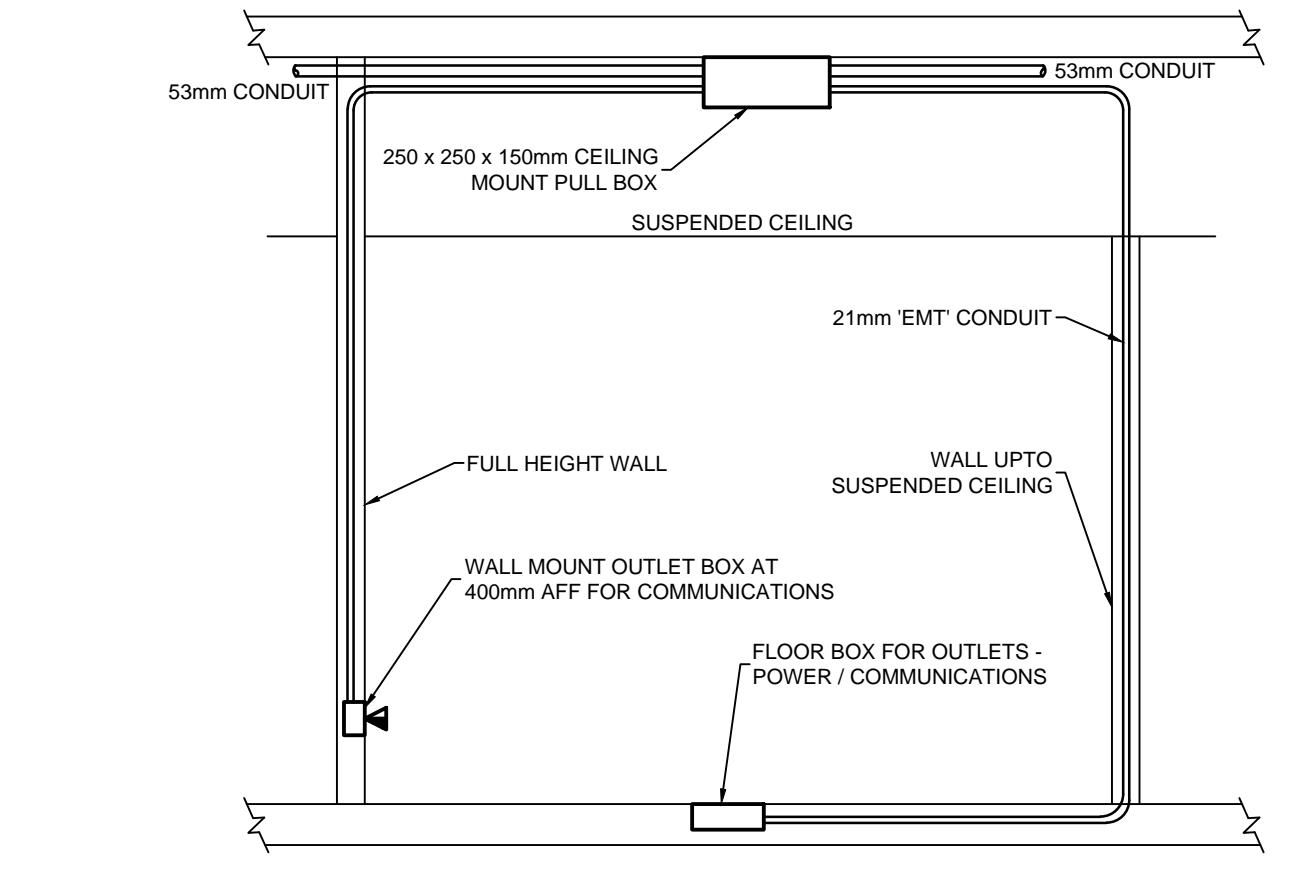


PREFAB (FOLDED) LOOP, 1.5 FEET WIDE BY 5 FEET LONG  
90° LONG ELBOW FOR 19mm INCH P.V.C. TUBING  
19mm P.V.C. TUBING.

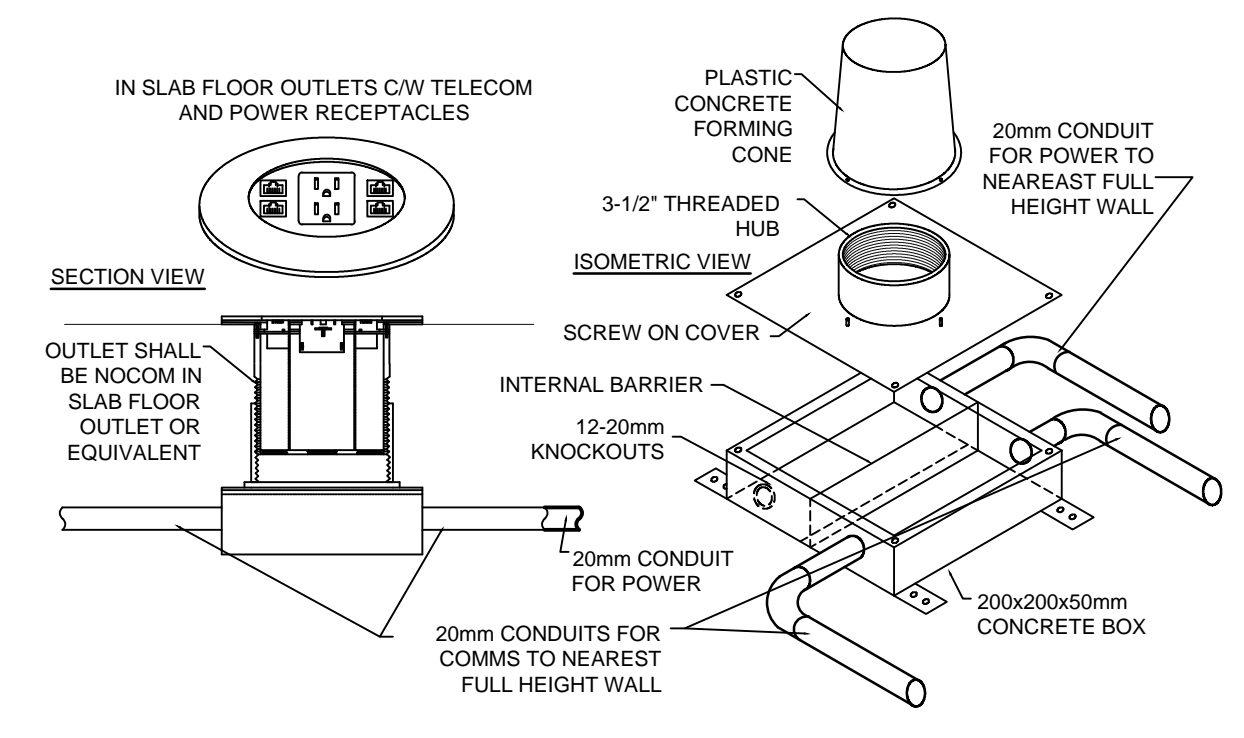


NOTE: REPRESENTATIVE DETAIL ONLY

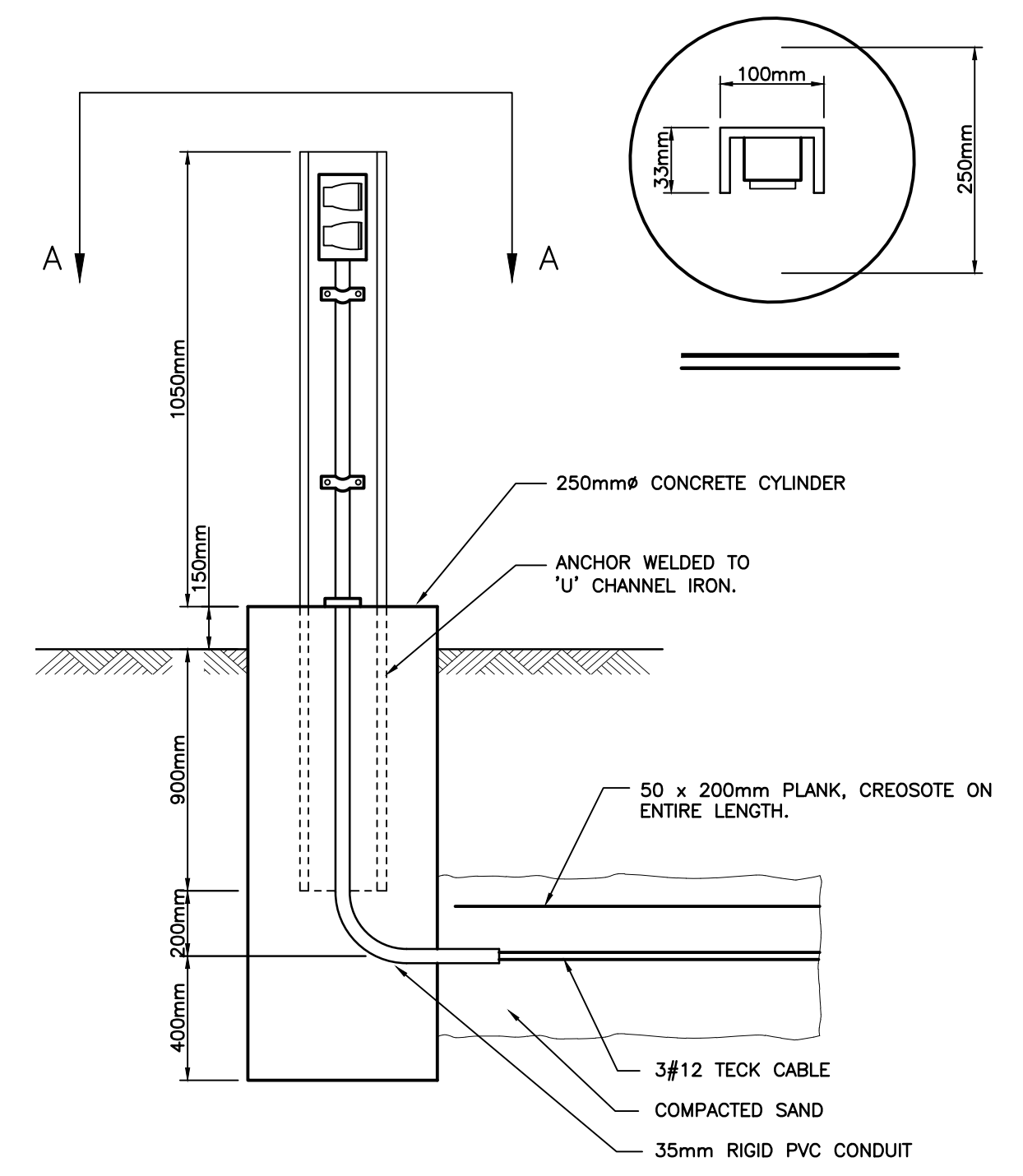
**4** VEHICLE DETECTION LOOP DETAIL (if required)  
NOT TO SCALE



**5** TYPICAL COMMUNICATION CONDUIT INSTALLATION DETAIL  
NOT TO SCALE



**6** TYPICAL IN-SLAB MULTICONNECT BOX DETAIL  
NOT TO SCALE



**7** TYPICAL BLOCK HEATER RECEPTACLE DETAIL  
NOT TO SCALE

16/02/2016 4:20:55 PM

**DFS**  
architecture & design

Montréal, QC | 400 boul. de Maisonneuve O. Bur. 500  
Saint John, NB | Montréal (Québec) H3A 1L4  
T: (514) 879-1708 F: (514) 861-6219  
www.dfsarch.com

Dans la province de Québec, les services architecturaux de DFS sont fournis par Fish Pellicier Todd architectes.

**CLELAND JARDINE**  
ENGINEERING LTD.

**CIMA**  
Partners in excellence  
Partenaire de génie

110-340 Catherine Street  
Ottawa ON K2P 2G8  
Phone: (613) 860-2462  
Fax: (613) 860-1670  
www.cima.ca

plan-repère	key plan	seal	stamp
L'entrepreneur doit vérifier les dimensions des dessins et les conditions de chantier avant de débiter les travaux. Aviser les professionnels de toutes divergences aux documents de construction. Ne pas mesurer sur les dessins.			
E	Issued for Tender	Aug. 4, 2016	
D	Issued for 99% review	Jun. 24, 2016	
C	Preliminary Drawings for Coordination	Jun. 8, 2016	
B	Issued for 50% review	Apr. 29, 2016	
A	Issued for preliminary review	Feb. 23, 2016	
no.	description	date	
RÉVISION			

project project

**New Building Construction, Sept-Îles, Québec**

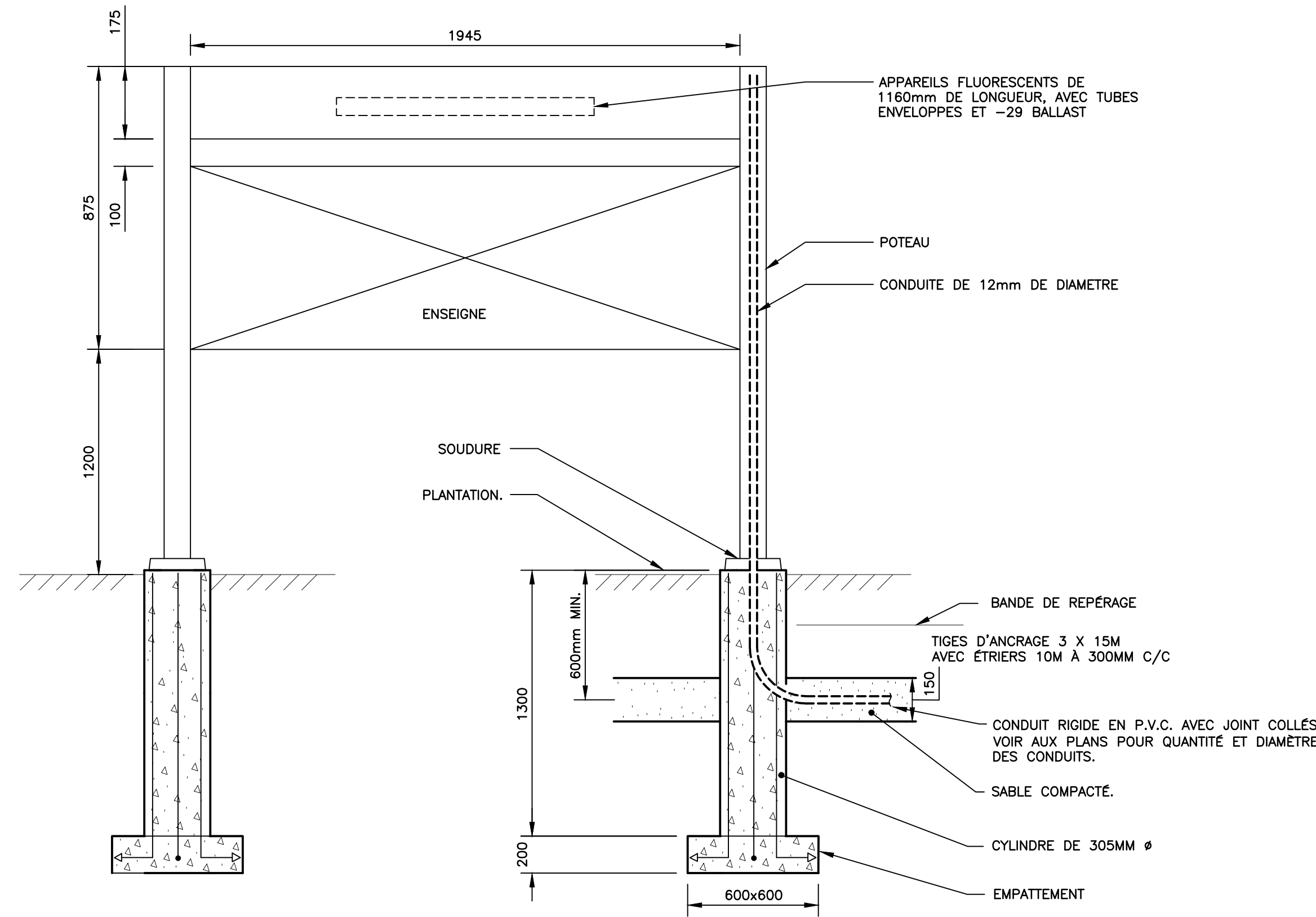
1501, boulevard Laure, Sept-Îles, QC

dessin drawing

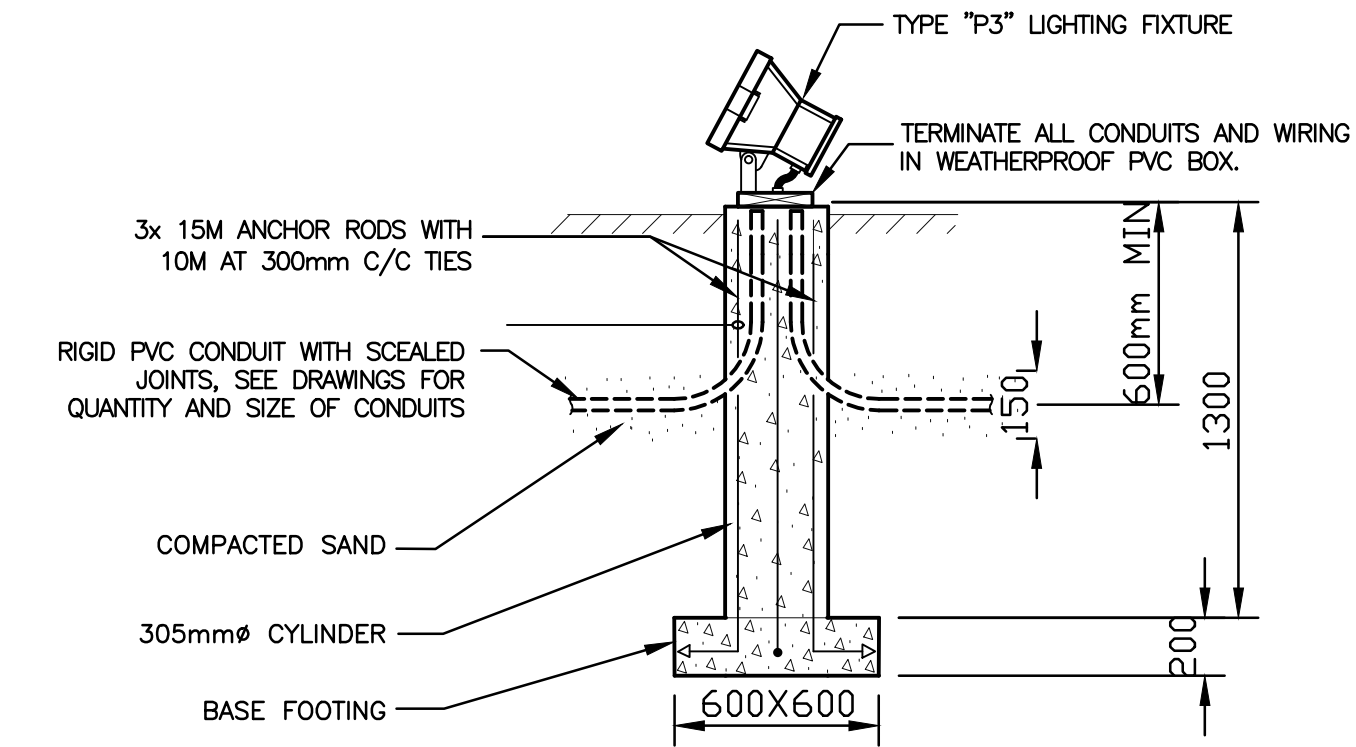
**MISCELLANEOUS DETAILS**

conception	design	ho. dossier	project no.
S. LAVOIE	DFS 5001	CIMA A000566A	
dessiné	drawn	fichier DAO	CAD file
Y. FARMER		A000566A_E300	
approuvé	approved	dossier client	client file
S. LAVOIE			DFS
échelle	scale	imprimé	plot date
AS SHOWN			10-Mar-16
no. page	sheet number		rev

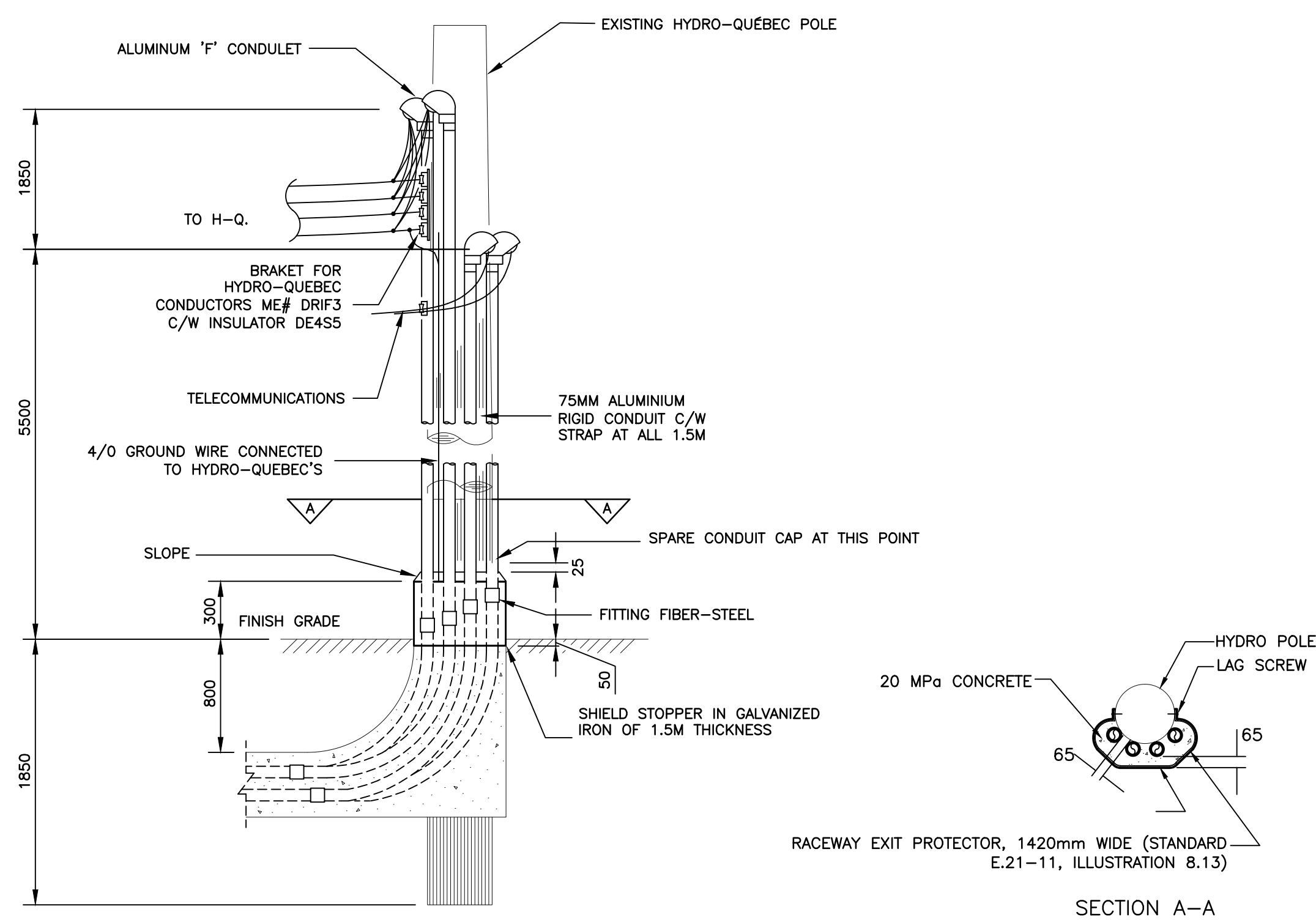
**E300**



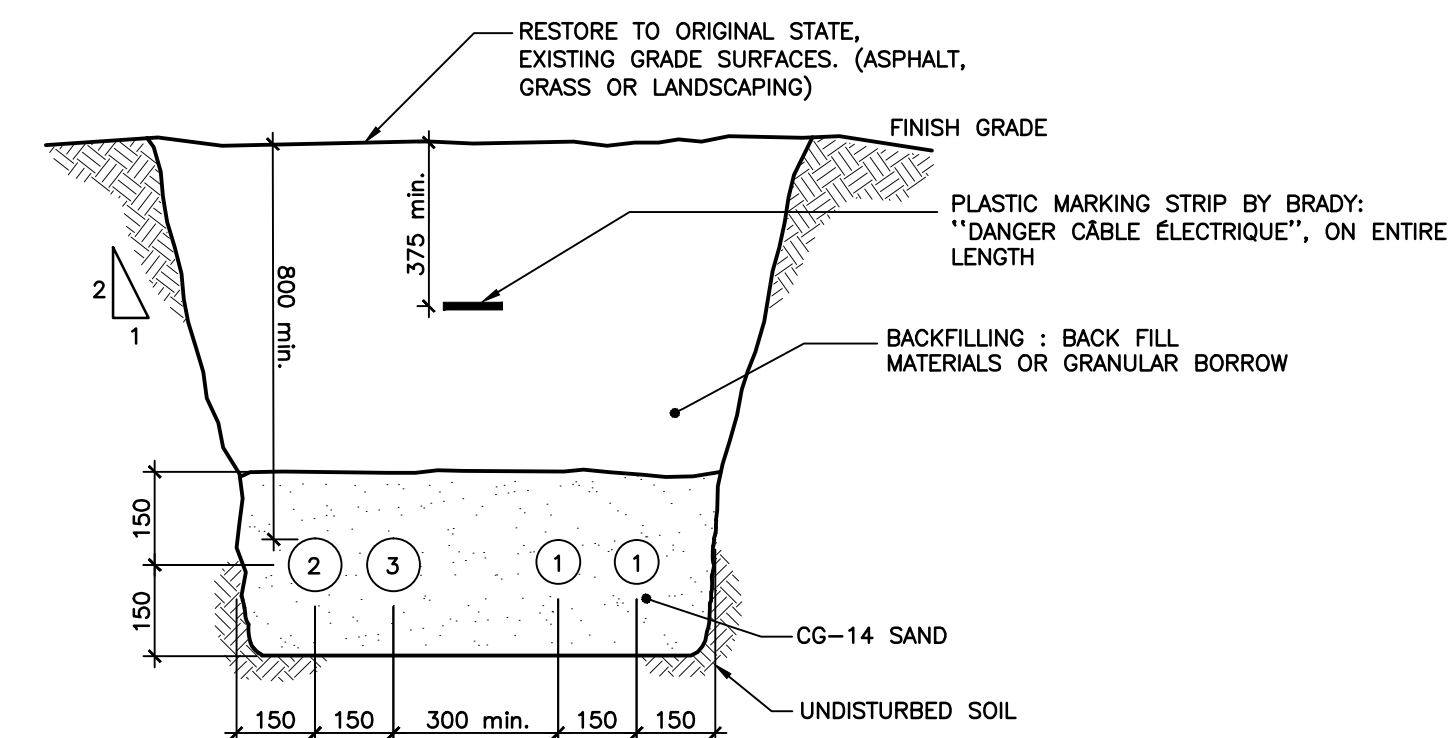
**1** TYPICAL EXTERIOR SIGN CONCRETE BASE DETAIL  
NOT TO SCALE



**2** TYPICAL FLAG POLE FLOOD LIGHT FIXTURE DETAIL  
NOT TO SCALE



**3**



**4**

L'entrepreneur doit vérifier les dimensions des dessins et les conditions de chantier avant de débiter les travaux. Aviser les professionnels de toutes divergences aux documents de construction. Ne pas mesurer sur les dessins.	scieu	stamp
--	-------	-------

no.	description	date
E	Issued for Tender	Aug. 4, 2016
D	Issued for 99% review	Jun. 24, 2016
C	Preliminary Drawings for Coordination	Jun. 8, 2016
B	Issued for 50% review	Apr. 29, 2016
A	Issued for preliminary review	Feb. 23, 2016

project  
**New Building Construction, Sept-Îles, Québec**  
1501, boulevard Laure, Sept-Îles, QC

dessin drawing  
**MISCELLANEOUS DETAILS**

conception	design	no. dossier	project no.
S. LAVOIE	DFS 5001	CIMA A000566A	
dessiné	drawn	fichier DAO	CAD file
Y. FARMER		A000566A_E300	
approuvé	approved	dossier client	client file
S. LAVOIE		DFS	
échelle	scale	imprimé	plot date
AS SHOWN			10-Mar-16
no. page	sheet number		rev