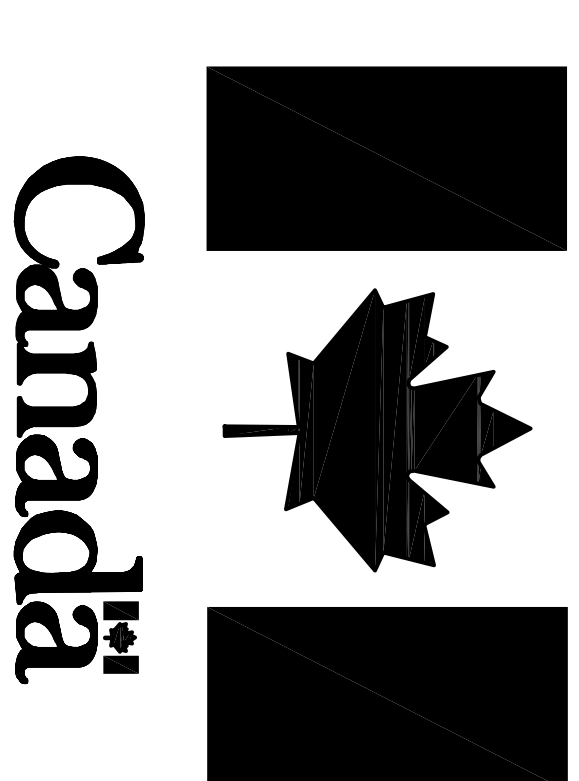


**PARKS CANADA**



**EXTERIOR PAINTING  
RYAN PREMISES NATIONAL HISTORIC SITE  
BONAVISTA, NL**

PROJECT NO.: 590  
ISSUED FOR TENDER

DATE: AUGUST 1, 2016

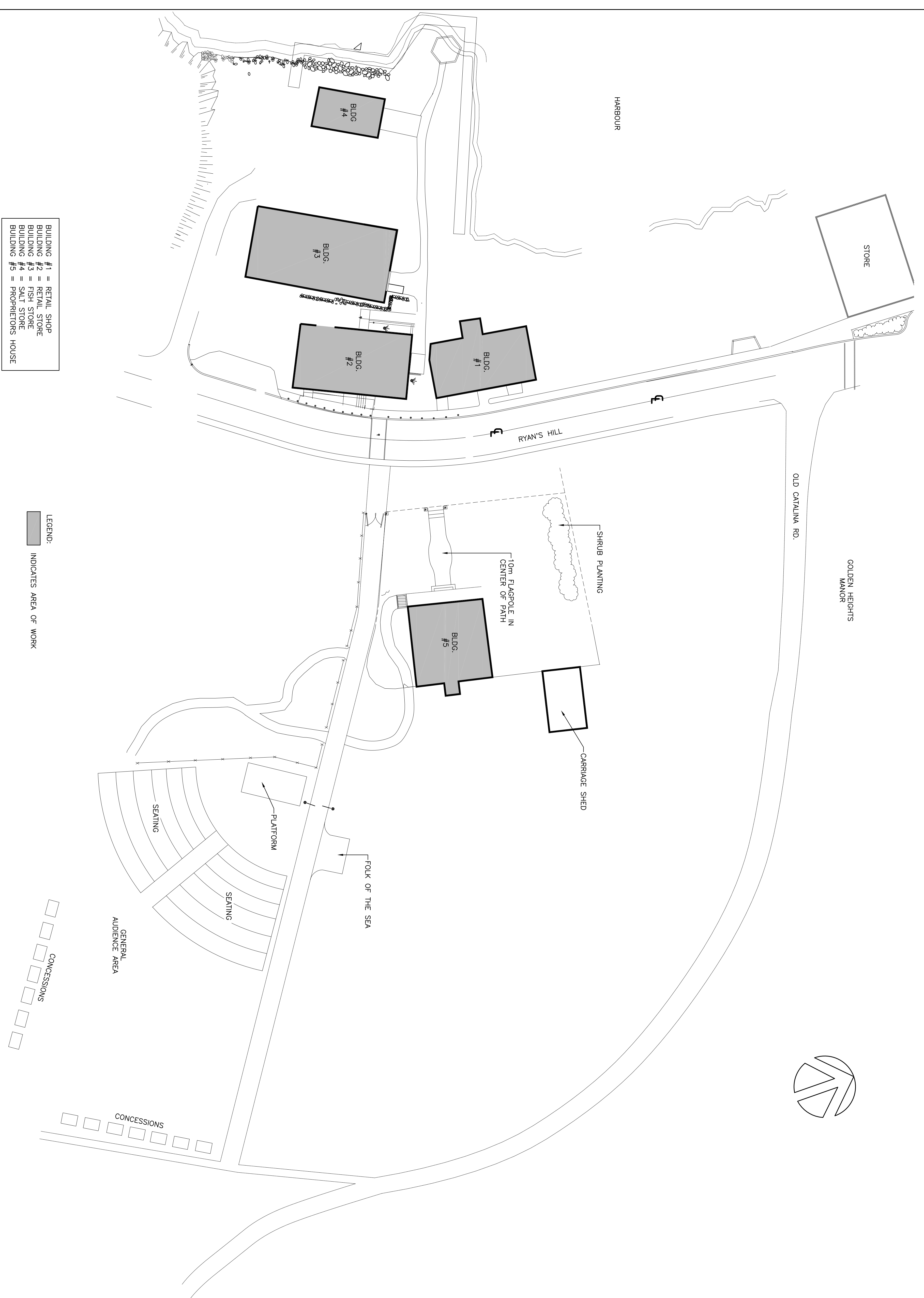
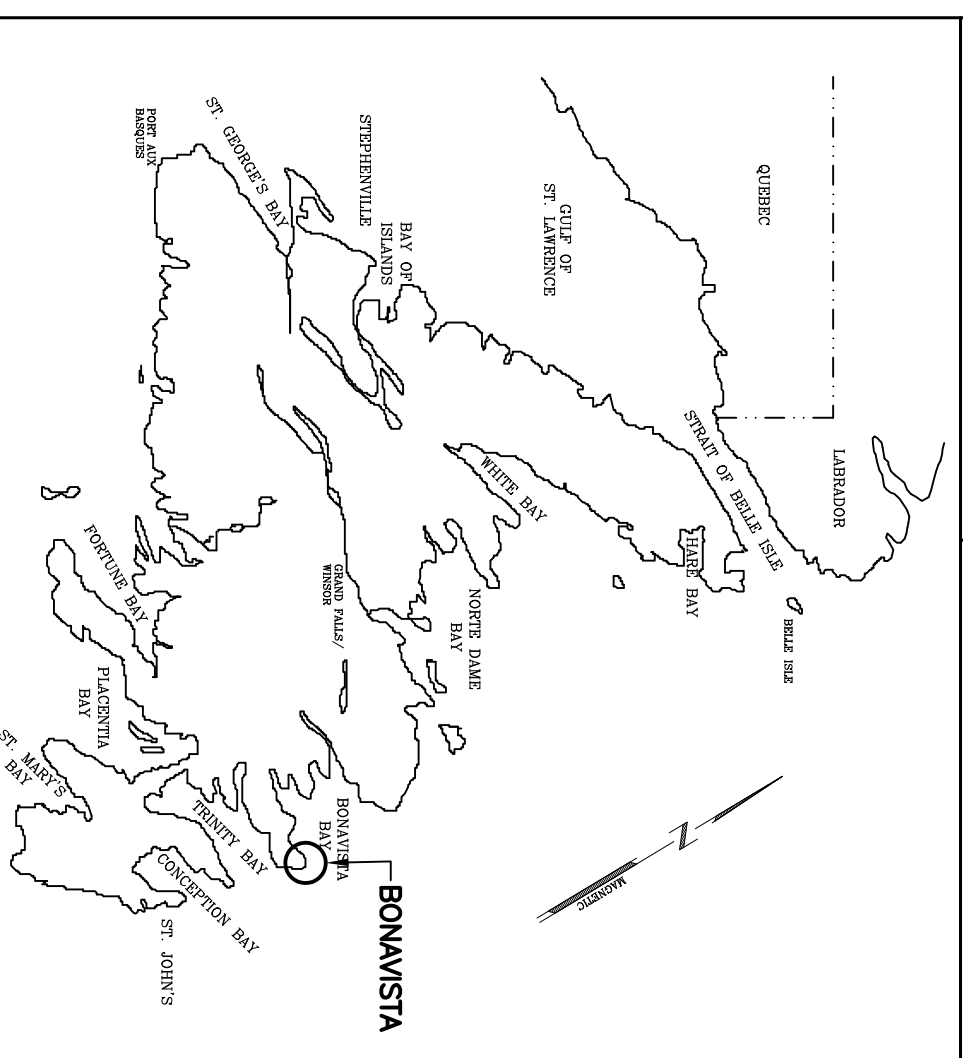
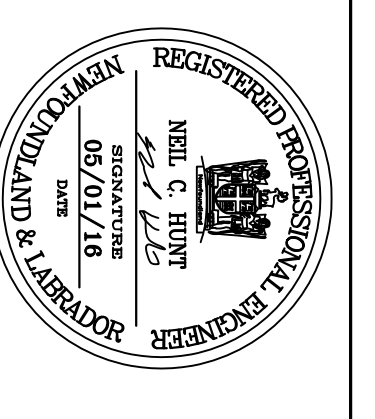
CLIENT/OWNER:  
**PARKS CANADA**

PRIME CONSULTANTS:  
**AFN ENGINEERING INC.**

**DRAWING LIST:**

<u>TITLE</u>	<u>SITE PLAN</u>
C1 OF 6	WORK PLAN - RETAIL SHOP
C2 OF 6	WORK PLAN - RETAIL STORE
C3 OF 6	WORK PLAN - FISH STORE
C4 OF 6	WORK PLAN - SALT STORE
C5 OF 6	WORK PLAN - PROPRIETORS HOUSE
C6 OF 6	

PROVINCE OF NEWFOUNDLAND  
**PERMIT HOLDER**  
 The Permit Allows  
**APR ENGINEERING, INC.**  
 to practice Professional Engineering  
 in Newfoundland and Labrador  
 by Order of the Council of Engineers  
 which is valid for the term 2016.



**BUILDING #1 = RETAIL SHOP**  
**BUILDING #2 = RETAIL STORE**  
**BUILDING #3 = FISH STORE**  
**BUILDING #4 = SALT STORE**  
**BUILDING #5 = PROPRIETORS HOUSE**

**LEGEND:**  
 INDICATES AREA OF WORK

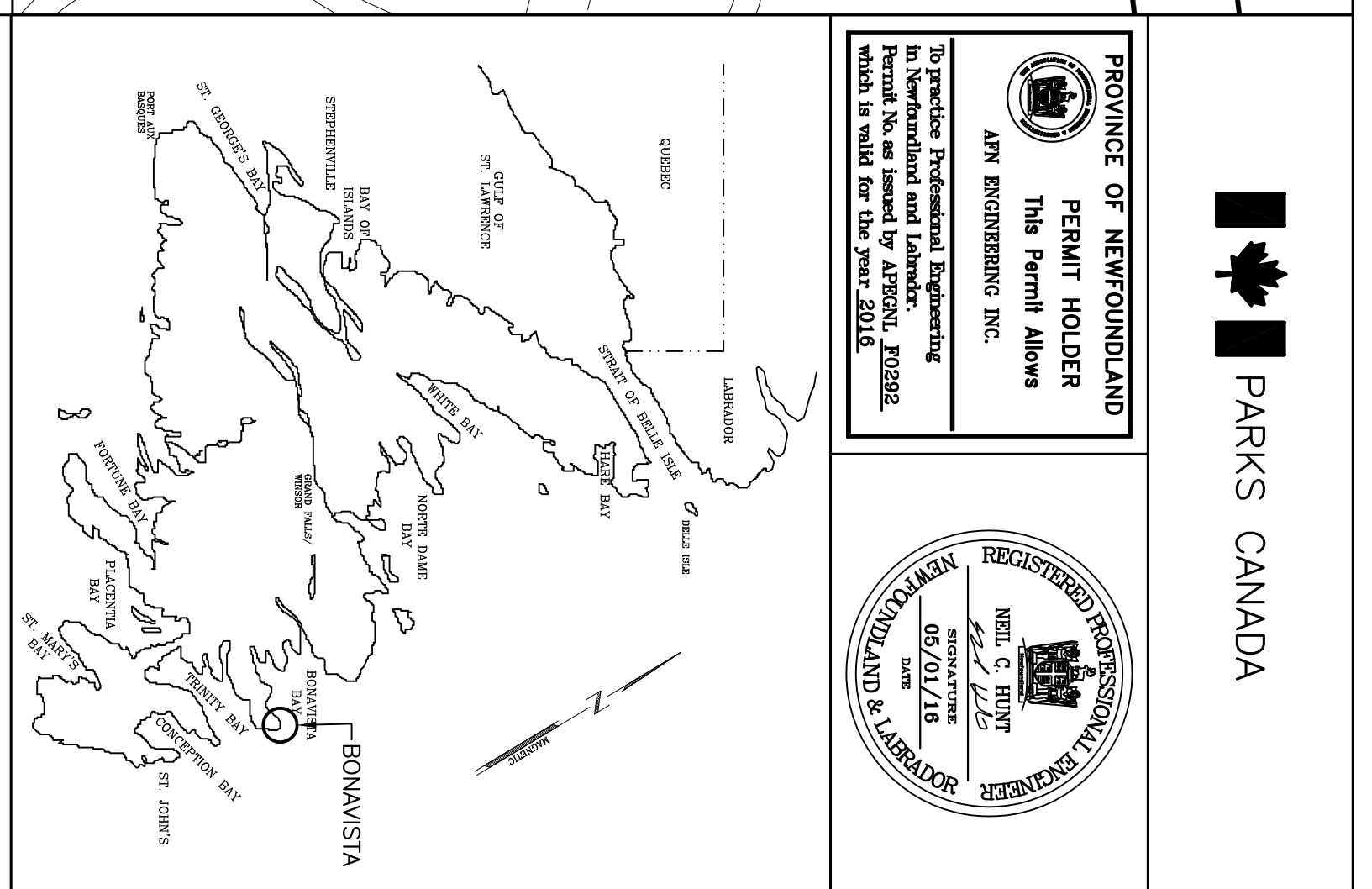
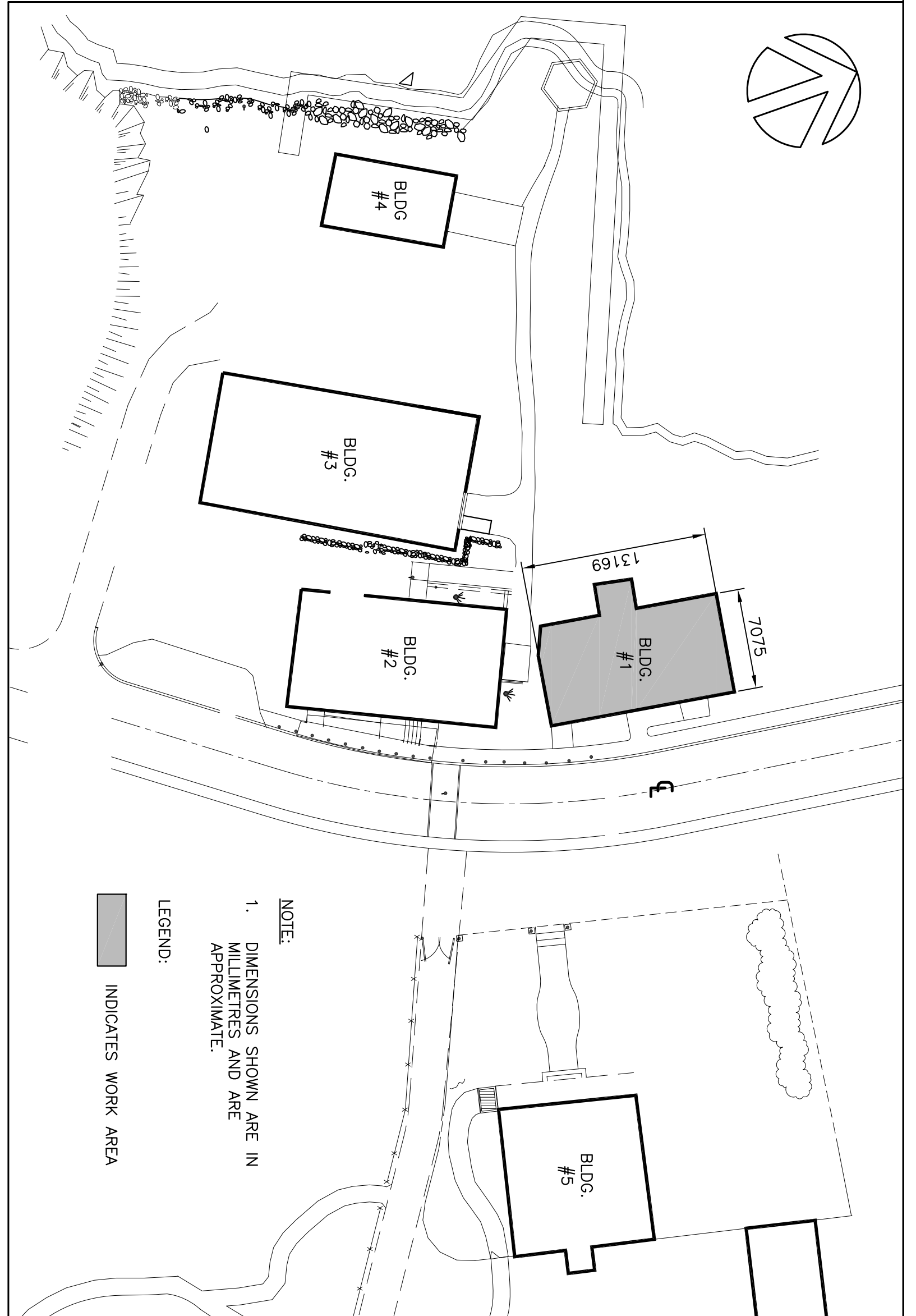
<b>B</b>	ISSUED FOR TENDER	08/01/16	P.H.	N.H.
<b>A</b>	ISSUED FOR REVIEW	01/12/16	P.H.	N.H.
<b>no.</b>	revision	date	by	approved
<b>no.</b>	revision	date	by	approved

Project - projct  
 EXTERIOR PAINTING  
 RYAN PREMISES  
 NATIONAL HISTORIC SITE  
 BONAVISTA, NL

**SITE PLAN**

drawn - dessine	P.H.	designed - dessine par	N.H.
date - date	MAY 1, 2016	checked - verifie	N.H.
scale - echelle	N.T.S.	approved for tender-approve pour l'offre	
project no. - projet no.	990	drawing no. - no du dessin	C1 OF 6
		sheet - feuille	C1





**NOTES:**

**GENERAL:**

- THE EXISTING FLAKING/PEELING PAINT IS TO BE REMOVED FROM THE WOODEN SURFACES IN ITS ENTIRETY. THE EXISTING PAINT IS LEAD BASED AND IS CONSIDERED LEACHABLE FOR THE PURPOSES OF TRANSPORTATION AND DISPOSAL. REFER TO SPECIFICATIONS FOR MINIMUM REQUIREMENTS RELATED TO CONTROL MEASURES ASSOCIATED WITH LEAD BASED PAINT PRODUCTS. SPECIFICATIONS ALSO INCLUDE DISPOSAL REQUIREMENTS ASSOCIATED WITH LEAD BASED FLAKING/PEELING PAINT.
- THE EXISTING PAINT PREPARATION OR APPLICATION OF PRIMER UNTIL BUILDING HAS BEEN INSPECTED BY DEPARTMENTAL REPRESENTATIVE. DEPARTMENTAL REPRESENTATIVE WILL BE SOLE JUDGE AS TO SUFFICIENCY OF SURFACE PREPARATION PRIOR TO APPLICATION OF PRIMER. ANY FLAKING/PEELING PAINT (INCLUDING ISOLATED SMALL AREAS) NOTED BY DEPARTMENTAL REPRESENTATIVE DURING ALL INSPECTIONS WILL BE CONSIDERED DEFICIENT WORK AND IS TO BE ADDRESSED BY THE CONTRACTOR PRIOR TO PROCEEDING WITH APPLICATION OF PRIMER.
- THE CONTRACTOR SHALL BE RESPONSIBLE FOR OBTAINING AND REVIEWING THE DEPARTMENTAL PER-03-NL SHOP DRAWINGS TO BE SUBMITTED FOR REVIEW BY THE DEPARTMENTAL REPRESENTATIVE UNDER THE ATTACHMENT/ANCHORAGE DETAILS ON THE SHOP DRAWINGS) ALLOW MINIMUM OF 5 DAYS FOR SCAFFOLDING SHOP DRAWINGS TO BE REVIEWED BY CONSERVATION EXPERTS, TO ENSURE SCAFFOLDING FASTENING AND ANCHORAGES WILL BE PROPERLY LOCATED AND FIXED IN WAYS AND LOCATIONS THAT MINIMIZE IMPACT TO THE HISTORIC PLACE (I.E. IN WAYS THAT BEST RESPECT TO THE HERITAGE VALUE OF THE BUILDING).
- THE CONTRACTOR SHALL BE RESPONSIBLE FOR OBTAINING AND REVIEWING THE DEPARTMENTAL PER-03-NL SITE AND MATERIAL AND SURFACE TEMPERATURES ON THIS DRAWING FOR PAINT DRESSING PURPOSES. COMPLETE WORK. DO NOT USE MEASUREMENTS SHOWN ON THIS DRAWING FOR PAINT DRESSING PURPOSES.

**SURFACE PREPARATION:**

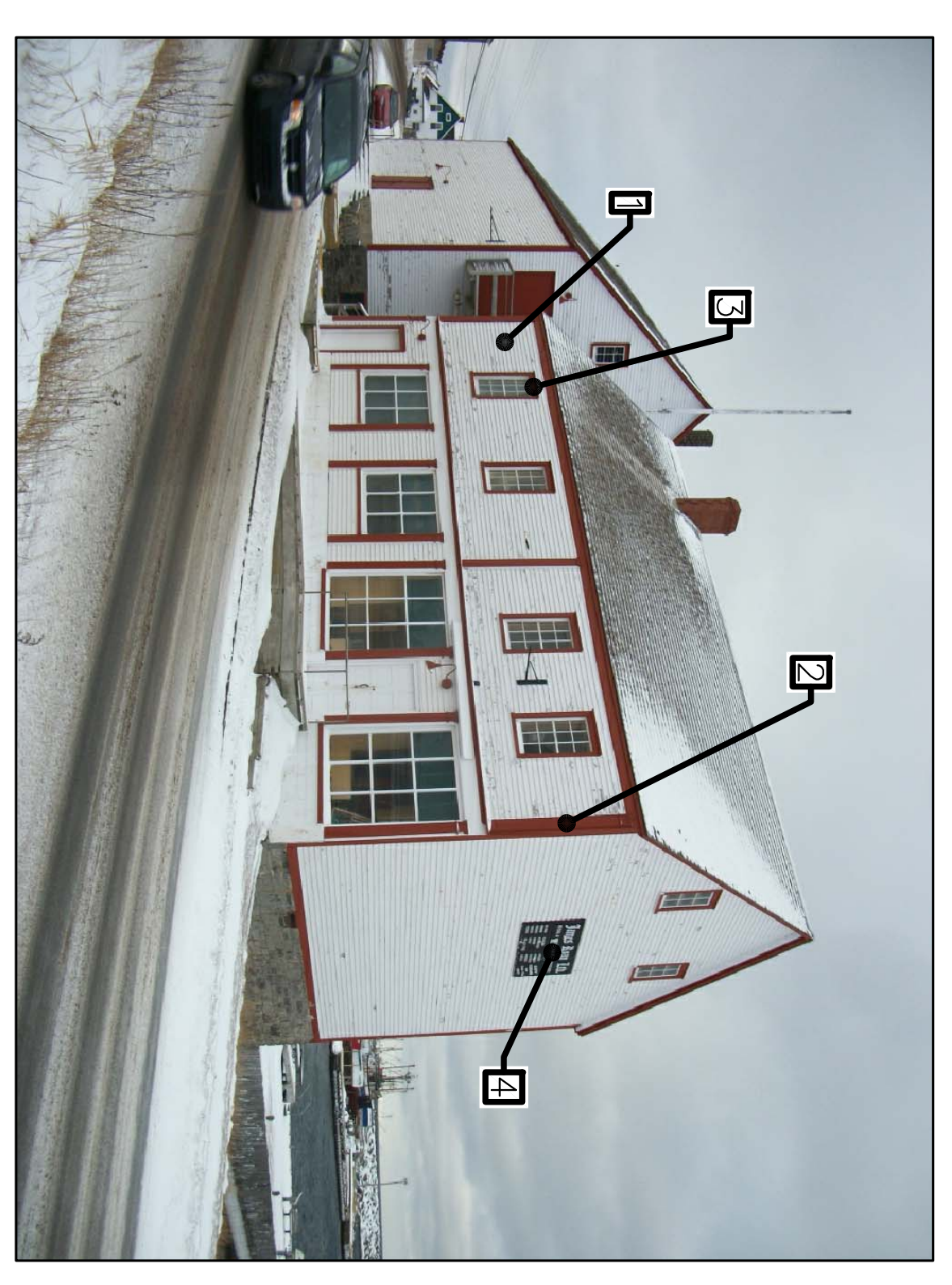
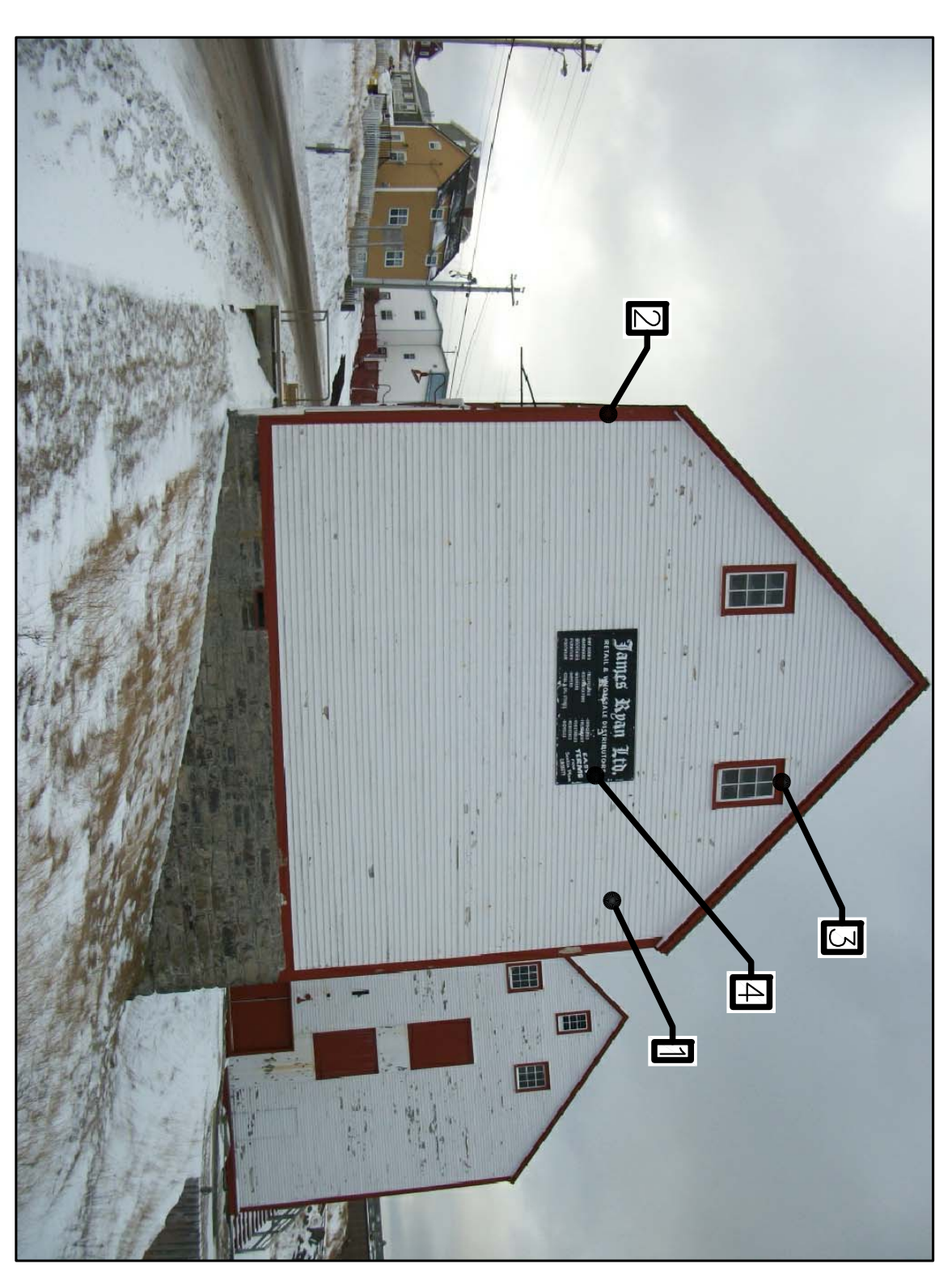
- ALL SURFACES MUST BE CLEAN, DRY AND FREE OF DIRT, CHALK, GREASE, WAX, RUST AND LOOSE OR PEELING PAINT BEFORE PAINTING.
- MILDLY AFFECTED AREA WITH A SOLUTION OF 30% HOUSEHOLD BLEACH AND 70% WATER SHOULD BE USED TO REMOVE ALL SURFACES SUCH EXCES WITH SOAP AND WATER.
- REMOVE PAINT CHIPS AND PEELING PAINT AND SAND TO SMOOTH EDGES.
- REPAIR HOLES AND CRACKS WITH FILLER SUITABLE FOR THE SURFACE TO BE REPAIRED.
- IF WOOD EXHIBITS RESIN, SCRAPE THE EXCESS AND CLEAN SURFACE WITH ALCOHOL OR PAINT THINNER.
- SAND ALL SURFACES SMOOTH, LIGHTLY SAND GLOSSY AREAS AND WEATHERED WOOD TO A NEW WOOD GRAIN.
- DRY SANDING, FLAME CUTTING AND/OR WELDING OF DRY PAINT FILM MAY GIVE RISE TO DUST AND/OR HAZARDOUS FUMES. WET SANDING SHOULD BE USED WHEREVER POSSIBLE. IF EXPOSURE CANNOT BE AVOIDED BY THE PROVISION OF LOCAL EXHAUST VENTILATION, SUITABLE RESPIRATORY PROTECTIVE EQUIPMENT SHOULD BE USED AND THE AREA ENCLOSED TO LIMIT OCCUPATIONAL EXPOSURE TO POTENTIAL LEAD DUST. REFER TO SPECIFICATIONS RELATED TO MEASURES TO LIMIT OCCUPATIONAL EXPOSURE TO LEAD.

**PRIMER TYPE (1 COAT):**

- USE WATER BASED, SATIN FINISH, 100% ACRYLIC RESIN TYPE PAINT AS SPECIFIED.
- ALL SURFACES SHALL BE SMOOTHED TO A FINISH THAT DOES NOT PROCEED WITH APPLICATION OF TOP COAT UNTIL DEPARTMENTAL REPRESENTATIVE HAS INSPECTED APPLICATION OF THE PRIMER AND CONFIRMED THE REQUIRED FILM THICKNESS HAS BEEN ACHIEVED.
- REFER TO THE MANUFACTURER'S PRINTED GUIDELINES FOR DRYING TIMES, RECOATING TIMES, AND APPLICATION LIMITATIONS RELATED TO TEMPERATURE, HUMIDITY AND VENTILATION. ABIDE BY ALL CONDITIONS OF THE MANUFACTURER'S PRINTED GUIDELINES FOR DRYING TIMES, RECOATING TIMES, AND APPLICATION LIMITATIONS RELATED TO TEMPERATURE, HUMIDITY AND VENTILATION. ABIDE BY ALL CONDITIONS OF THE MANUFACTURER'S GUIDELINES AND CARRY ALL POTENTIAL COSTS IN THE BID PRICE TO ENSURE COMPLIANCE.
- ENSURE AIR MATERIAL AND SURFACE TEMPERATURES ARE ABOVE 7°C AND DO NOT APPLY IF RAIN, SNOW OR HEAVY DEW IS EXPECTED WITHIN 48 HOURS. AVOID PAINTING IN DIRECT SUNLIGHT.

**TOP COAT (2 COATS):**

- USE WATER BASED, SATIN FINISH, 100% ACRYLIC RESIN TYPE PAINT AS SPECIFIED. COLOUR TO MATCH EXISTING, OR AS OTHERWISE SELECTED BY DEPARTMENTAL REPRESENTATIVE.
- WET FILM THICKNESS TO BE 4 MILS FOR EACH TOP COAT. DRY FILM THICKNESS TO BE 1.4 MILS FOR EACH TOP COAT. THE CONTRACTOR SHALL BE RESPONSIBLE FOR OBTAINING AND REVIEWING THE DEPARTMENTAL PER-03-NL SHOP DRAWINGS TO BE SUBMITTED FOR REVIEW BY THE DEPARTMENTAL REPRESENTATIVE UNDER THE ATTACHMENT/ANCHORAGE DETAILS ON THE SHOP DRAWINGS) ALLOW MINIMUM OF 5 DAYS FOR SCAFFOLDING SHOP DRAWINGS TO BE REVIEWED BY CONSERVATION EXPERTS, TO ENSURE SCAFFOLDING FASTENING AND ANCHORAGES WILL BE PROPERLY LOCATED AND FIXED IN WAYS AND LOCATIONS THAT MINIMIZE IMPACT TO THE HISTORIC PLACE (I.E. IN WAYS THAT BEST RESPECT TO THE HERITAGE VALUE OF THE BUILDING).
- THE CONTRACTOR SHALL BE RESPONSIBLE FOR OBTAINING AND REVIEWING THE DEPARTMENTAL PER-03-NL SITE AND MATERIAL AND SURFACE TEMPERATURES ON THIS DRAWING FOR PAINT DRESSING PURPOSES. COMPLETE WORK. DO NOT USE MEASUREMENTS SHOWN ON THIS DRAWING FOR PAINT DRESSING PURPOSES.



**WORK PLAN**

- 1: REPAINT ALL EXTERIOR WALLS (ALL SIDES). SEE NOTES REGARDING REMOVAL OF FLAKING/PEELING PAINT AND SURFACE PREPARATION PRIOR TO PRIMING/PAINTING.
- 2: REPAINT ALL EXTERIOR TRIMS (ALL SIDES). SEE NOTES REGARDING REMOVAL OF FLAKING/PEELING PAINT AND SURFACE PREPARATION PRIOR TO PRIMING/PAINTING.
- 3: REPAINT ALL EXTERIOR WINDOW AND DOOR FRAMES/TRIMS (ALL SIDES). SEE NOTES REGARDING REMOVAL OF FLAKING/PEELING PAINT AND SURFACE PREPARATION PRIOR TO PRIMING/PAINTING.
- 4: PROTECT SIGNAGE AND OTHER SITE INFRASTRUCTURE DURING WORK.

**KEY PLAN**

SCALE: N.T.S.

**NOTE:**  
 1. DIMENSIONS SHOWN ARE IN MILLIMETERS AND ARE APPROXIMATE

**LEGEND:**  
 INDICATES WORK AREA

**GENERAL NOTES:**

CONTRACTOR TO REMOVE PAINT AND THEN ALLOW DEPARTMENTAL REPRESENTATIVE VISUAL INSPECTION TO DETERMINE THE EXTENT OF DAMAGE TO BE REMOVED. IF SUBSTRATE IS TO BE REPLACED, THE COST WILL BE NEGOTIATED AS A CONTINGENT CHANGE NOTICE. REFER TO THE SPECIFICATIONS WITH RESPECT TO THE HERITAGE VALUE OF THE WOOD AND THE SPECIFIC CARE RELATED TO PREPARATION.

PROTECT SIGNAGE AND OTHER SITE INFRASTRUCTURE (LIGHTING, BRIDGE CONNECTIONS, ETC.) DURING WORK. REMOVE, REPAIR OR REPLACE AS NECESSARY. THE CONTRACTOR SHALL BE RESPONSIBLE FOR OBTAINING AND REVIEWING THE DEPARTMENTAL PER-03-NL SHOP DRAWINGS TO BE SUBMITTED FOR REVIEW BY THE DEPARTMENTAL REPRESENTATIVE UNDER THE ATTACHMENT/ANCHORAGE DETAILS ON THE SHOP DRAWINGS) ALLOW MINIMUM OF 5 DAYS FOR SCAFFOLDING SHOP DRAWINGS TO BE REVIEWED BY CONSERVATION EXPERTS, TO ENSURE SCAFFOLDING FASTENING AND ANCHORAGES WILL BE PROPERLY LOCATED AND FIXED IN WAYS AND LOCATIONS THAT MINIMIZE IMPACT TO THE HISTORIC PLACE (I.E. IN WAYS THAT BEST RESPECT TO THE HERITAGE VALUE OF THE BUILDING).

THE CONTRACTOR SHALL BE RESPONSIBLE FOR OBTAINING AND REVIEWING THE DEPARTMENTAL PER-03-NL SITE AND MATERIAL AND SURFACE TEMPERATURES ON THIS DRAWING FOR PAINT DRESSING PURPOSES. COMPLETE WORK. DO NOT USE MEASUREMENTS SHOWN ON THIS DRAWING FOR PAINT DRESSING PURPOSES.

DURING ANY SURFACE PREPARATION (INCLUDING LEAD ABATEMENT), ENSURE NOT TO DAMAGE THE WOOD AND THE WOOD GRAIN. SURFACE PREPARATIONS AND CLEANING USING WATER SHALL BE CONDUCTED IN A MANNER THAT DOES NOT DAMAGE THE PRESENCE OF THE DEPARTMENTAL REPRESENTATIVE) TO DETERMINE APPROPRIATE SETTINGS IN THIS REGARD. LOCATE TESTS IN REMOTE LOCATIONS LESS VISIBLE (TO BE DETERMINED IN COLLABORATION WITH THE DEPARTMENTAL REPRESENTATIVE).

POWER WASHING HAS THE POTENTIAL TO CAUSE SERIOUS DAMAGE AND MOISTURE INTRUSION ESPECIALLY IN THE CASE OF HIGH PRESSURE WATER. THE CONTRACTOR SHALL BE RESPONSIBLE FOR OBTAINING AND REVIEWING THE DEPARTMENTAL PER-03-NL SHOP DRAWINGS TO BE SUBMITTED FOR REVIEW BY THE DEPARTMENTAL REPRESENTATIVE UNDER THE ATTACHMENT/ANCHORAGE DETAILS ON THE SHOP DRAWINGS) ALLOW MINIMUM OF 5 DAYS FOR SCAFFOLDING SHOP DRAWINGS TO BE REVIEWED BY CONSERVATION EXPERTS, TO ENSURE SCAFFOLDING FASTENING AND ANCHORAGES WILL BE PROPERLY LOCATED AND FIXED IN WAYS AND LOCATIONS THAT MINIMIZE IMPACT TO THE HISTORIC PLACE (I.E. IN WAYS THAT BEST RESPECT TO THE HERITAGE VALUE OF THE BUILDING).

THE CONTRACTOR SHALL BE RESPONSIBLE FOR OBTAINING AND REVIEWING THE DEPARTMENTAL PER-03-NL SITE AND MATERIAL AND SURFACE TEMPERATURES ON THIS DRAWING FOR PAINT DRESSING PURPOSES. COMPLETE WORK. DO NOT USE MEASUREMENTS SHOWN ON THIS DRAWING FOR PAINT DRESSING PURPOSES.

Project - project		EXTERIOR PAINTING	
Project - project		RYAN PREMISES	
Project - project		NATIONAL HISTORIC SITE	
Project - project		BONAVISTA, NL	
Drawing - dessin			
<b>WORK PLAN - RETAIL SHOP</b>			
drawn - dessiné	P.H.	designed - dessiné par	N.H.
date - date	MAY 1, 2016	checked - vérifié	N.H.
scale - échelle	N.T.S.	approved for tender - approuvé pour l'offre	
project no. - projet no.	C2 OF 6	sheet - feuille	C2

ISSUED FOR TENDER	08/01/16	P.H.	N.H.
ISSUED FOR REVIEW	01/12/16	P.H.	N.H.
revision	date	by	approved
no.	date	no.	no.















