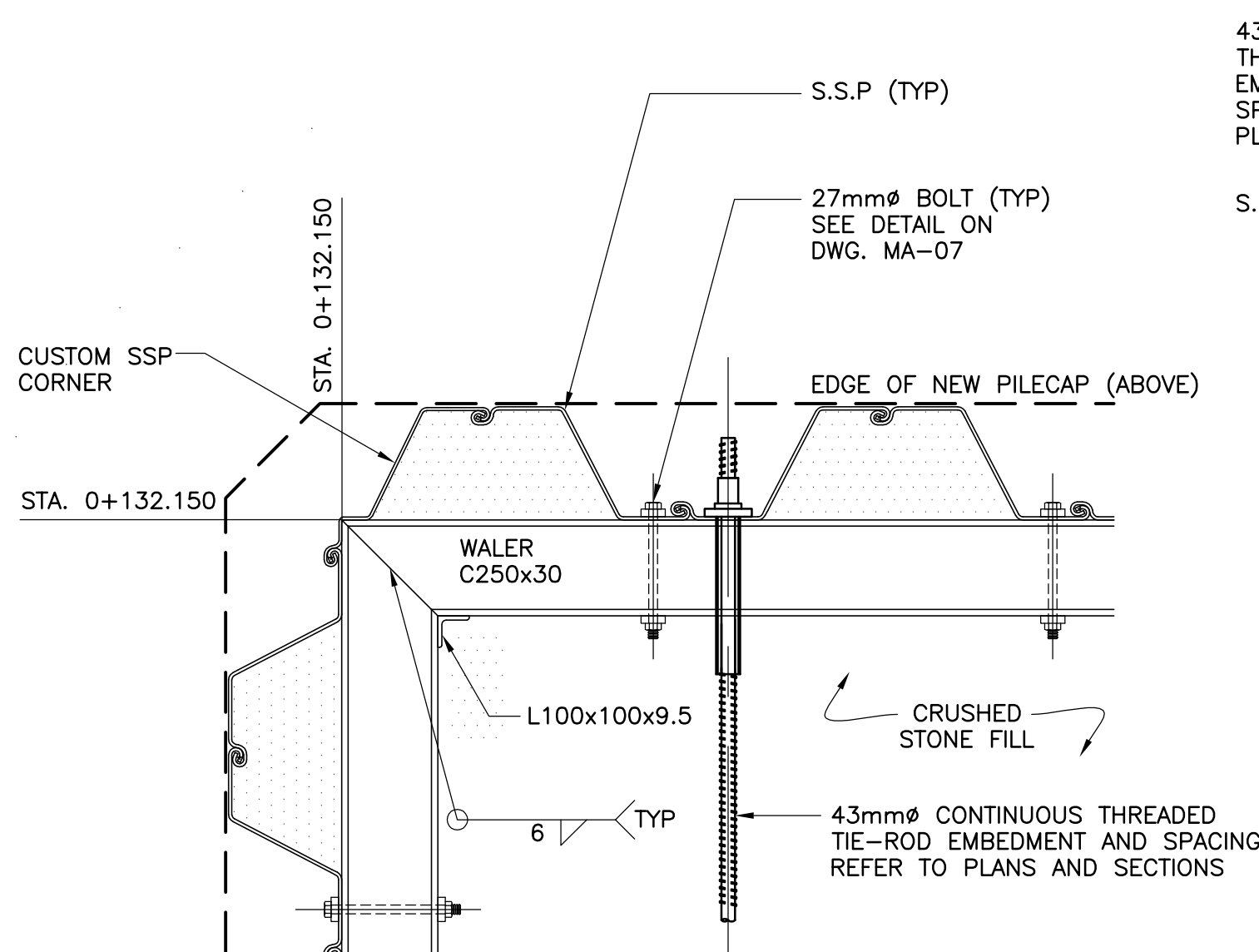
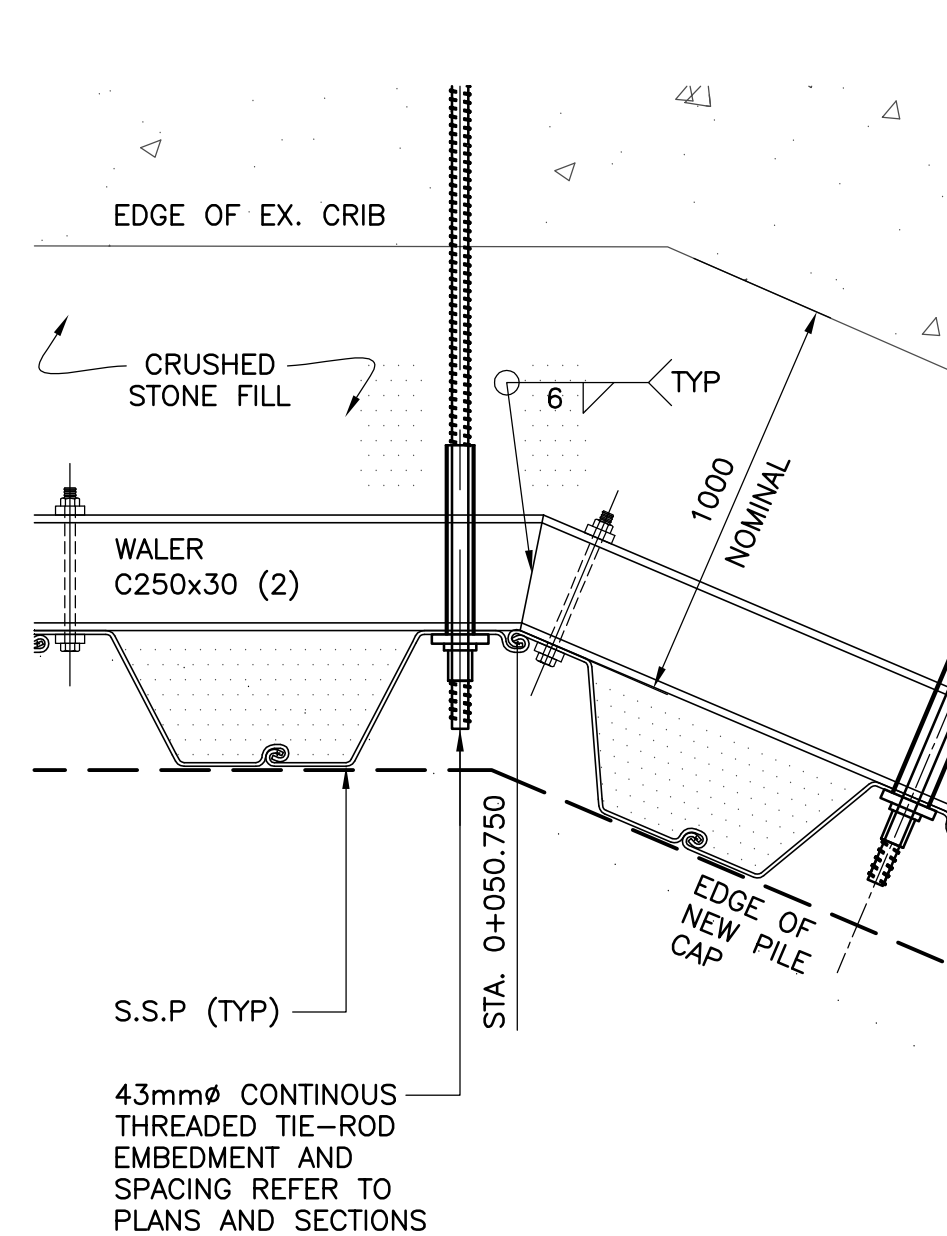


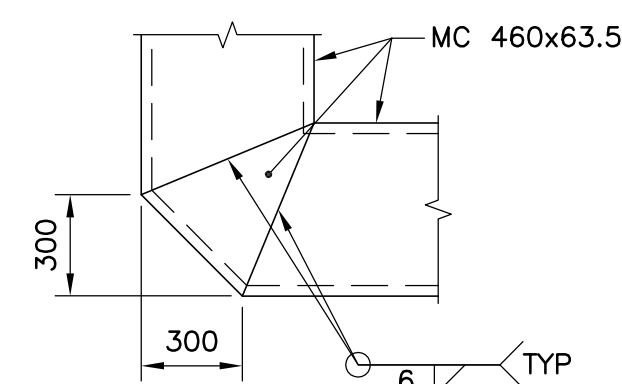
1 PLAN AT STA. 0+000.000
03/08 1:20



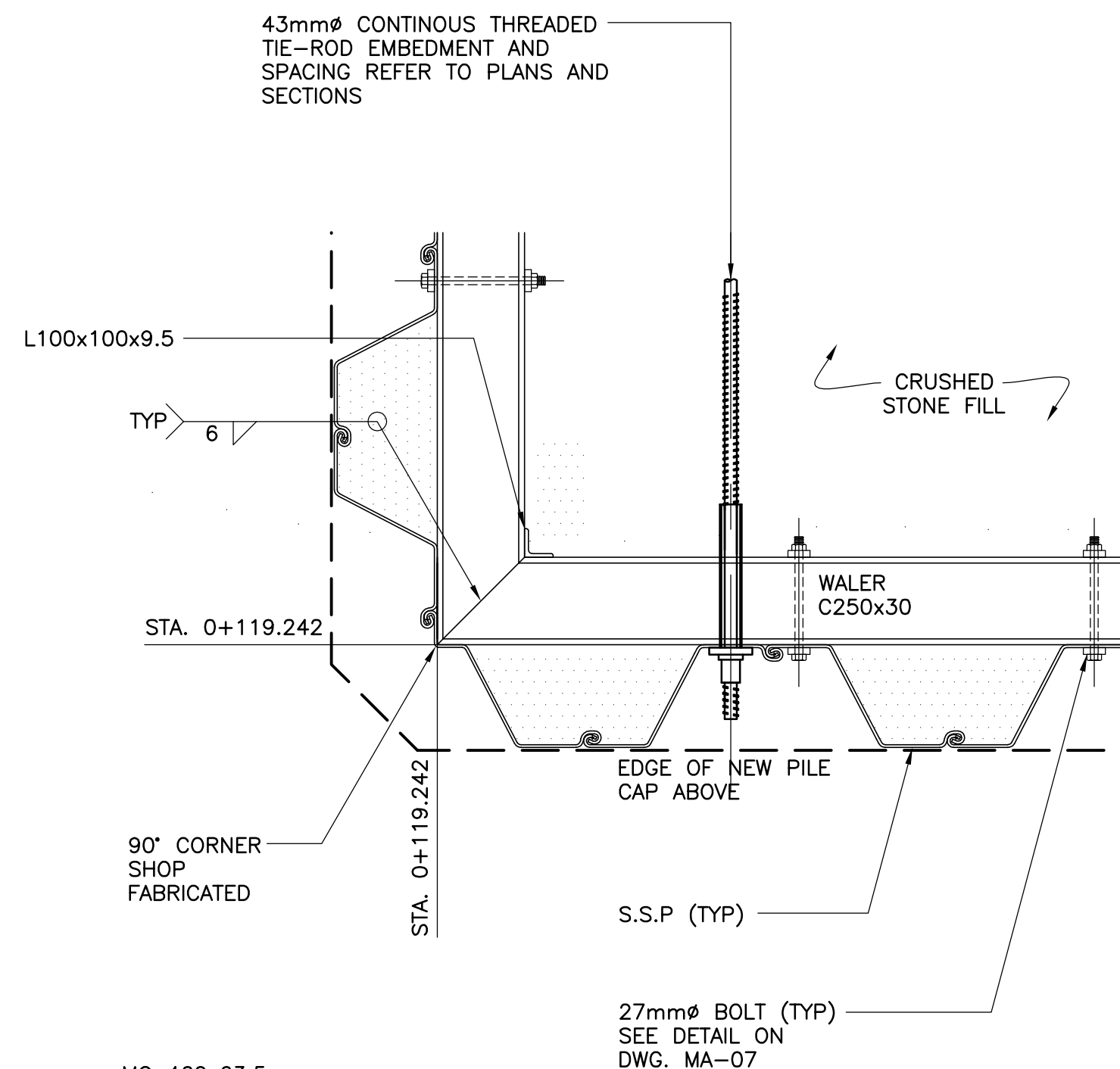
4 PLAN AT STA. 0+132.150
03/08 1:20



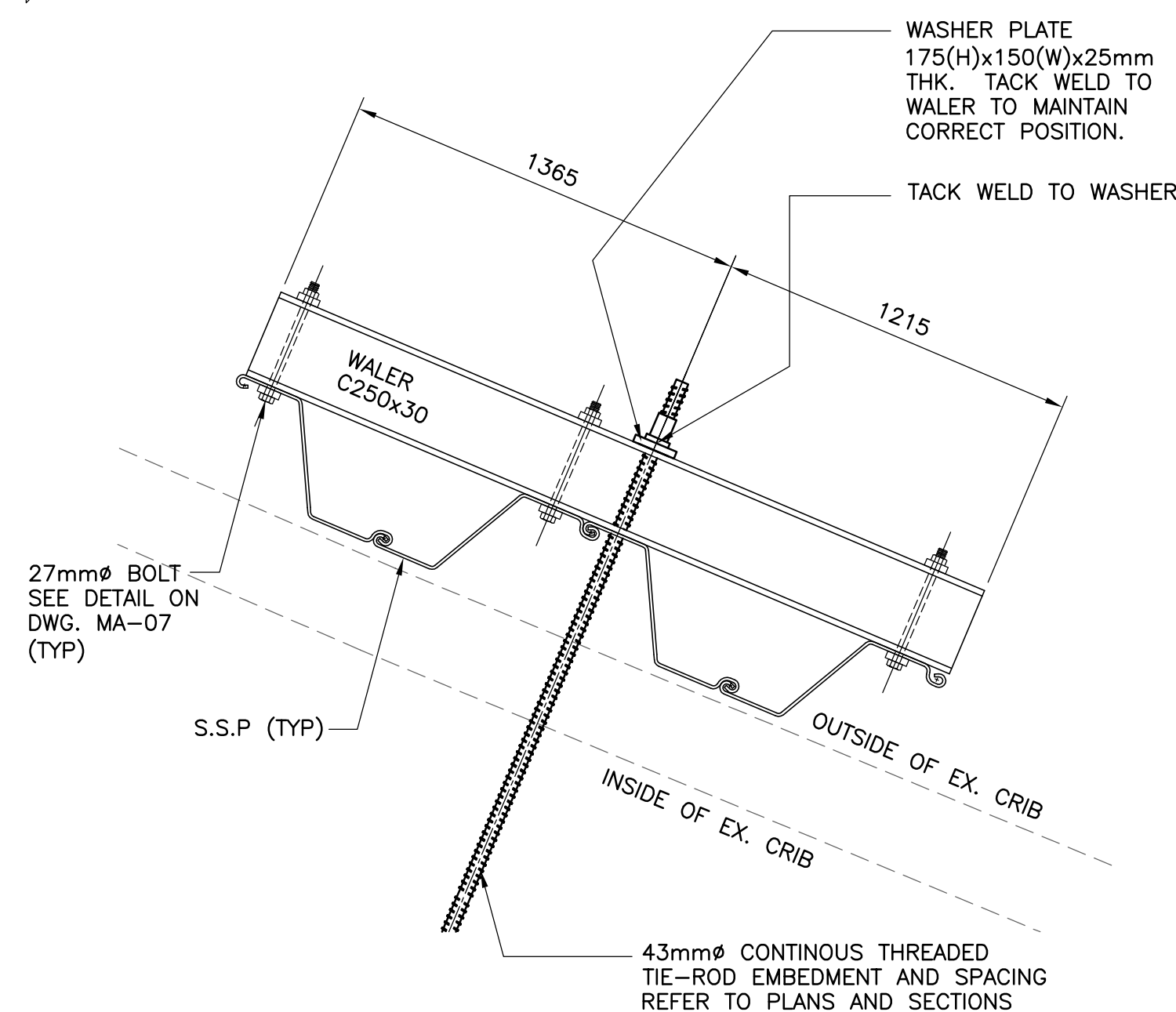
2 PLAN AT STA. 0+050.472
03/08 1:20



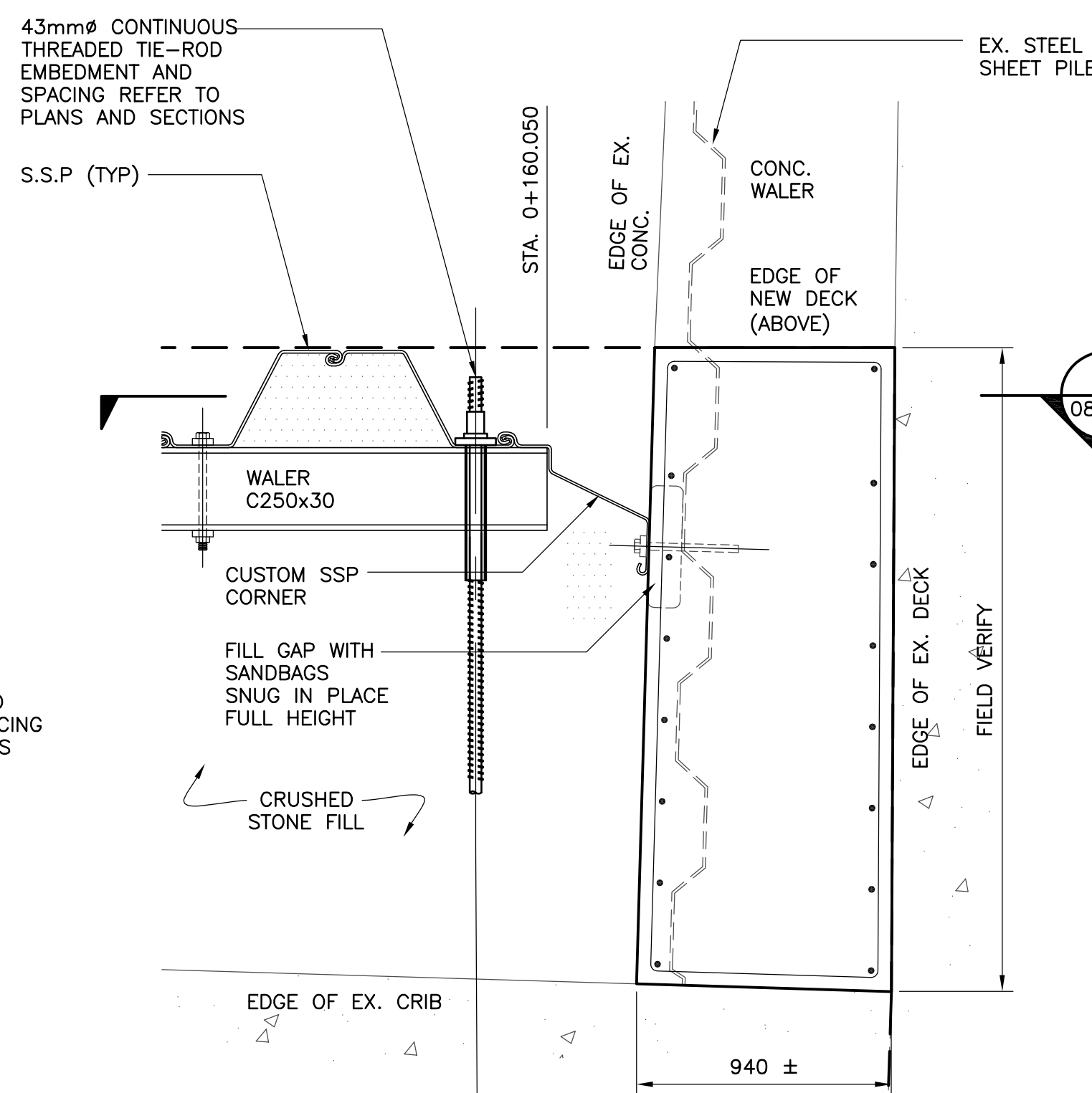
CORNER DETAIL OF MC 460x63.5



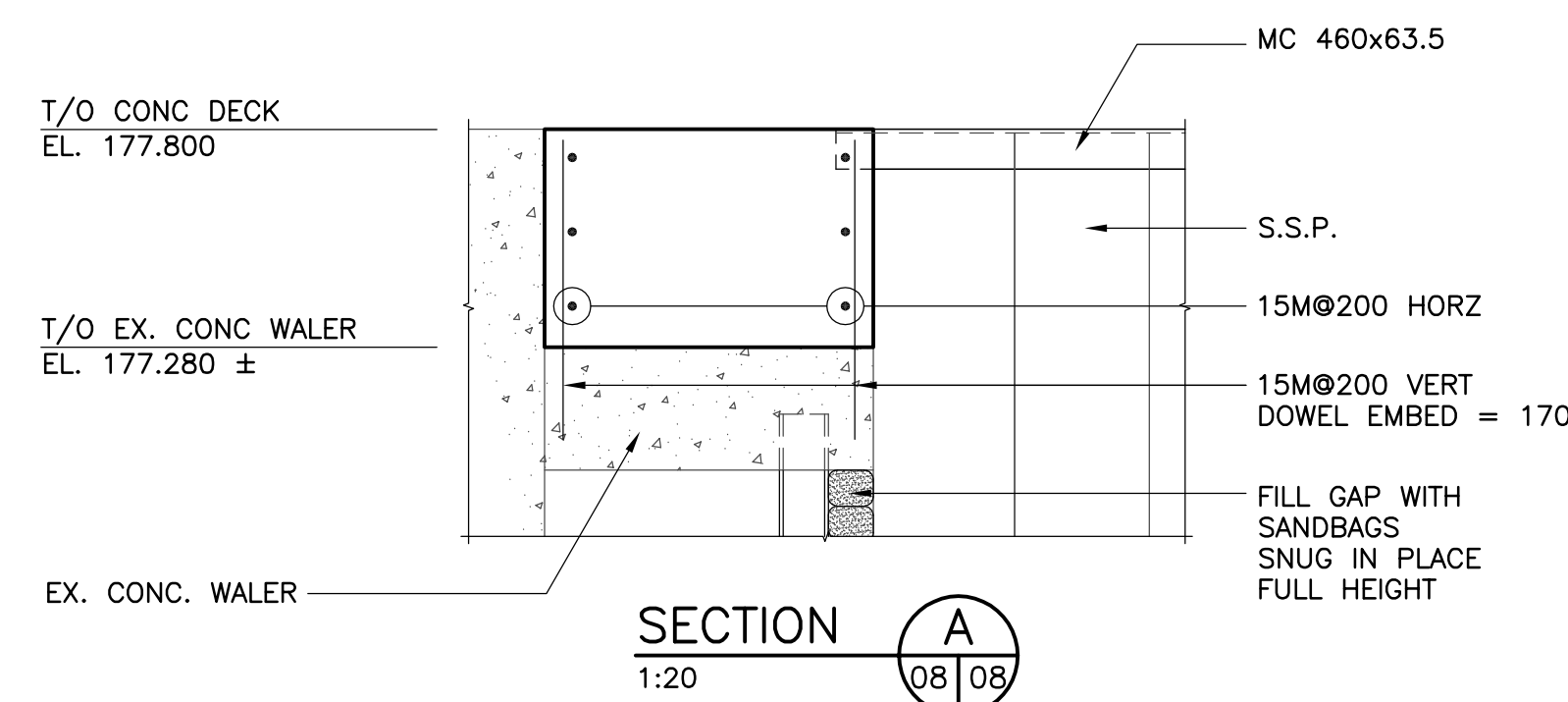
3 PLAN AT STA. 0+119.242
03/08 1:20



6 TYPICAL ANCHOR WALL
03/08 1:20



5 PLAN AT STA. 0+160.050
03/08 1:20



NOTE:

1. S.S.P. CONNECTIONS ARE TYPICAL FOR ALL SECTIONS (UNO)
2. SEE DRAWINGS MA-07 FOR CONNECTION DETAILS.

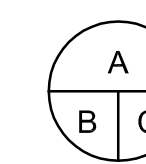
SMALL CRAFT HARBOURS
CENTRAL AND ARCTIC REGION



No.	Description	Dwn.By Des.Par	Date
4	ISSUED FOR TENDER	JJ	12/08/20
3	ISSUED FOR COMPLETION	JJ	17/12/14
2	ISSUED FOR FINAL REVIEW	JJ	22/10/14
1	ISSUED FOR 100% REVIEW	JJ	17/09/14

Revision / Révision

Do not scale drawings.
Verify all dimensions and conditions on site and immediately notify the Departmental Representative of all discrepancies.



- A Detail No.
No. du détail
B drawing no. - where detail required
dessin no. - où détail exigé
C drawing no. - where detailed
dessin no. - où détaillé



800 COCHRANE DRIVE, 5th FLOOR
MIDLAND ONTARIO CANADA, L3R 9K3
TEL.: 905-475-7270 | FAX: 905-475-5994 | WWW.WSPGROUP.COM

Project title / Titre du projet

PORT ELGIN
WEST PIER
REHABILITATION

Drawing title / Titre du dessin

S.S.P. CONNECTION
DETAILS

Drawn by / Dessiné par	Designed by / Conçu par
PETER REGALADO	MARC PICHETTE
Approved by / Approuvé par	Drawing Date / Date du dessin
JOHN JUFFS	MAY 8 2014
Project manager / Administrateur de projet	
JOHN JUFFS	
HCEW Number / Numéro de CHTI	Drawing Number / Numéro du Dessin
-	MA-08
Project Number / Numéro du projet	Sheet / Feuille
131-23620-00-100	10 of 12