

SMALL CRAFT HARBOURS
CENTRAL AND ARCTIC REGION



4	ISSUED FOR TENDER	JJ	12/08/20
3	ISSUED FOR COMPLETION	JJ	17/12/14
2	ISSUED FOR FINAL REVIEW	JJ	22/10/14
1	ISSUED FOR 100% REVIEW	JJ	17/09/14
No.	Description	Dwn.By Des.Par	Date

Revision / Révision

Do not scale drawings.
Verify all dimensions and conditions on site and immediately notify the
Departmental Representative of all discrepancies.

A	Detail No. No. du détail
B	drawing no. - where detail required dessin no. - où détail exigé
C	drawing no. - where detailed dessin no. - où détaillé



800 COCHRANE DRIVE, 5th FLOOR
MIDLAND ONTARIO CANADA L3R 9K3
TEL.: 905-475-7270 | FAX: 905-475-5994 | WWW.WSPGROUP.COM

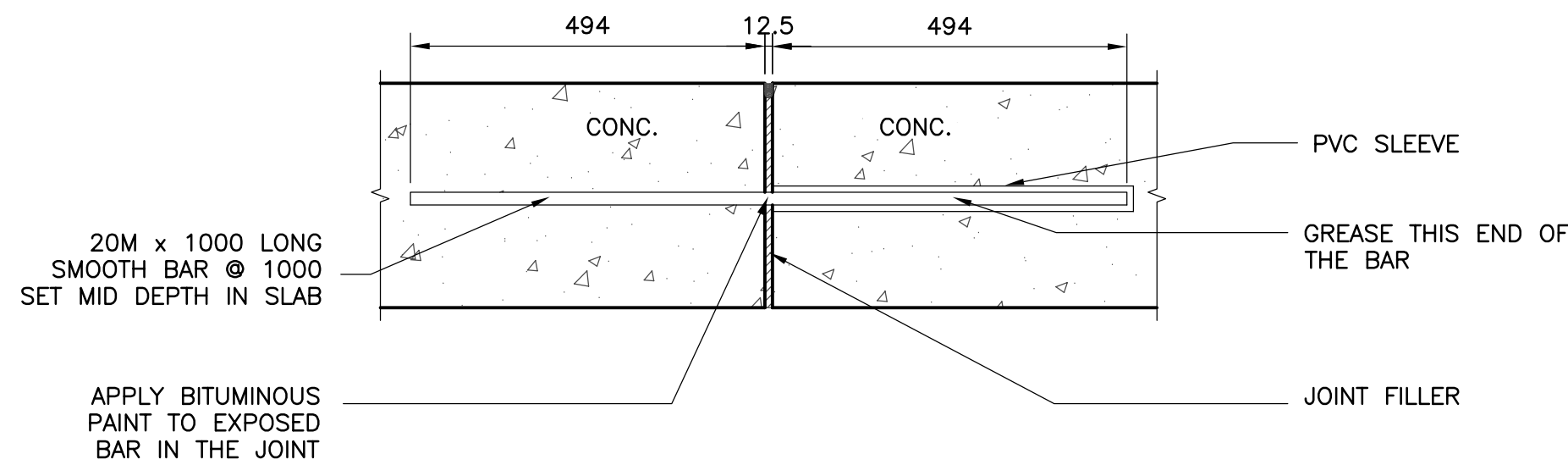
Project title / Titre du projet

PORT ELGIN
WEST PIER
REHABILITATION

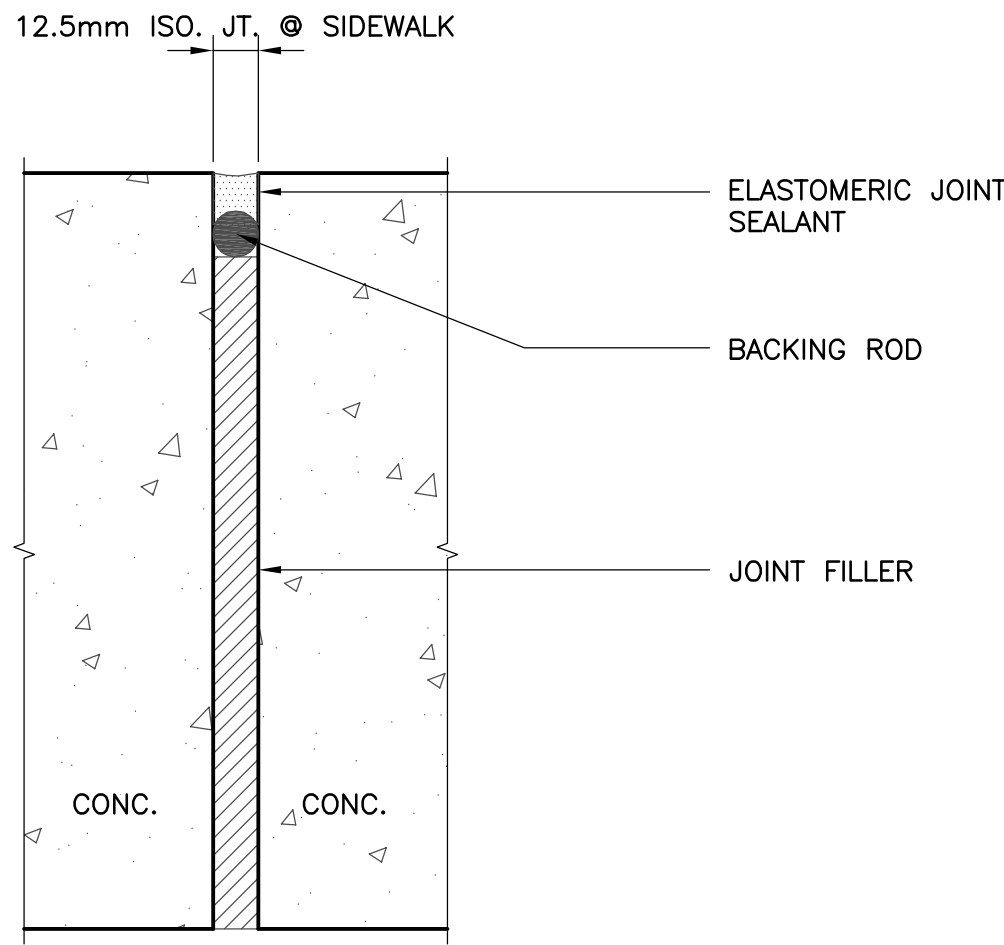
Drawing title / Titre du dessin

JOINT DETAILS AND
TEMPORARY CLOSURE
DETAIL

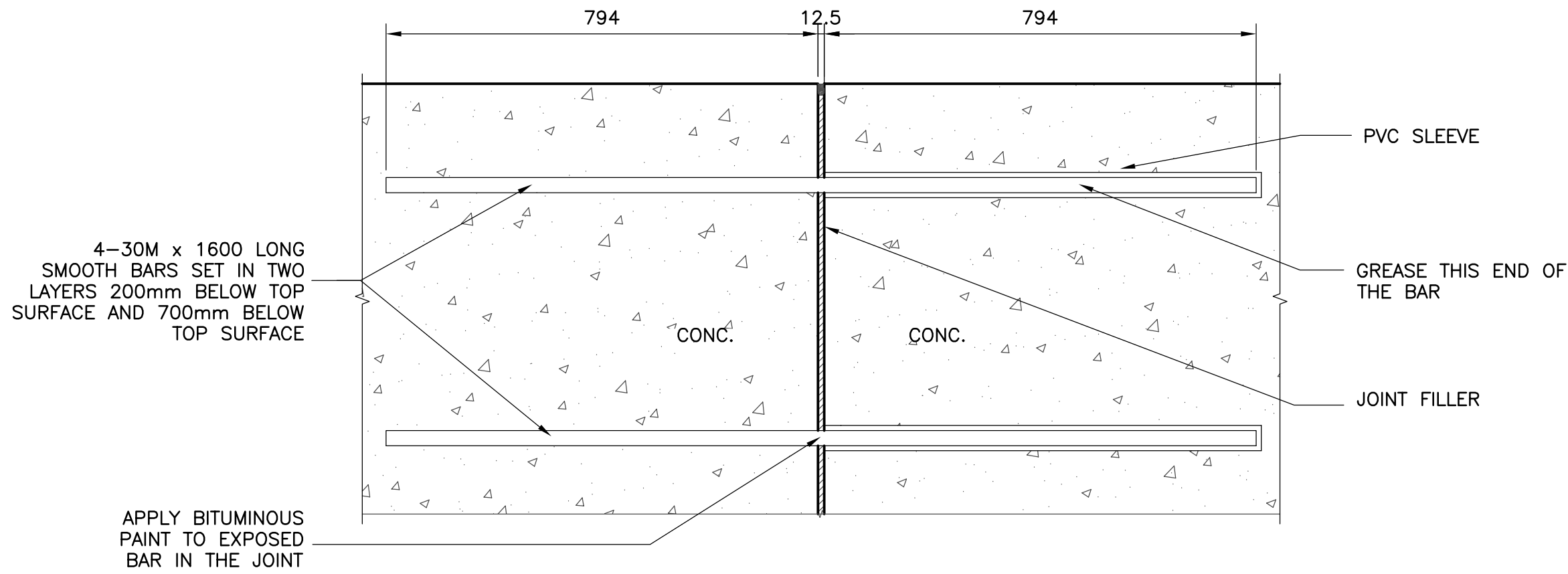
Drawn by / Dessiné par	Designed by / Conçu par
PETER REGALADO	MARC PICHETTE
Approved by / Approuvé par	Drawing Date / Date du dessin
JOHN JUFFS	MAY 8 2014
Project manager / Administrateur de projet	
JOHN JUFFS	
HCEW Number / Numéro de CHTI	Drawing Number/ Numéro du Dessin
-	MA-10
Project Number / Numéro du projet	Sheet Feuille
131-23620-00-100	12 of 12



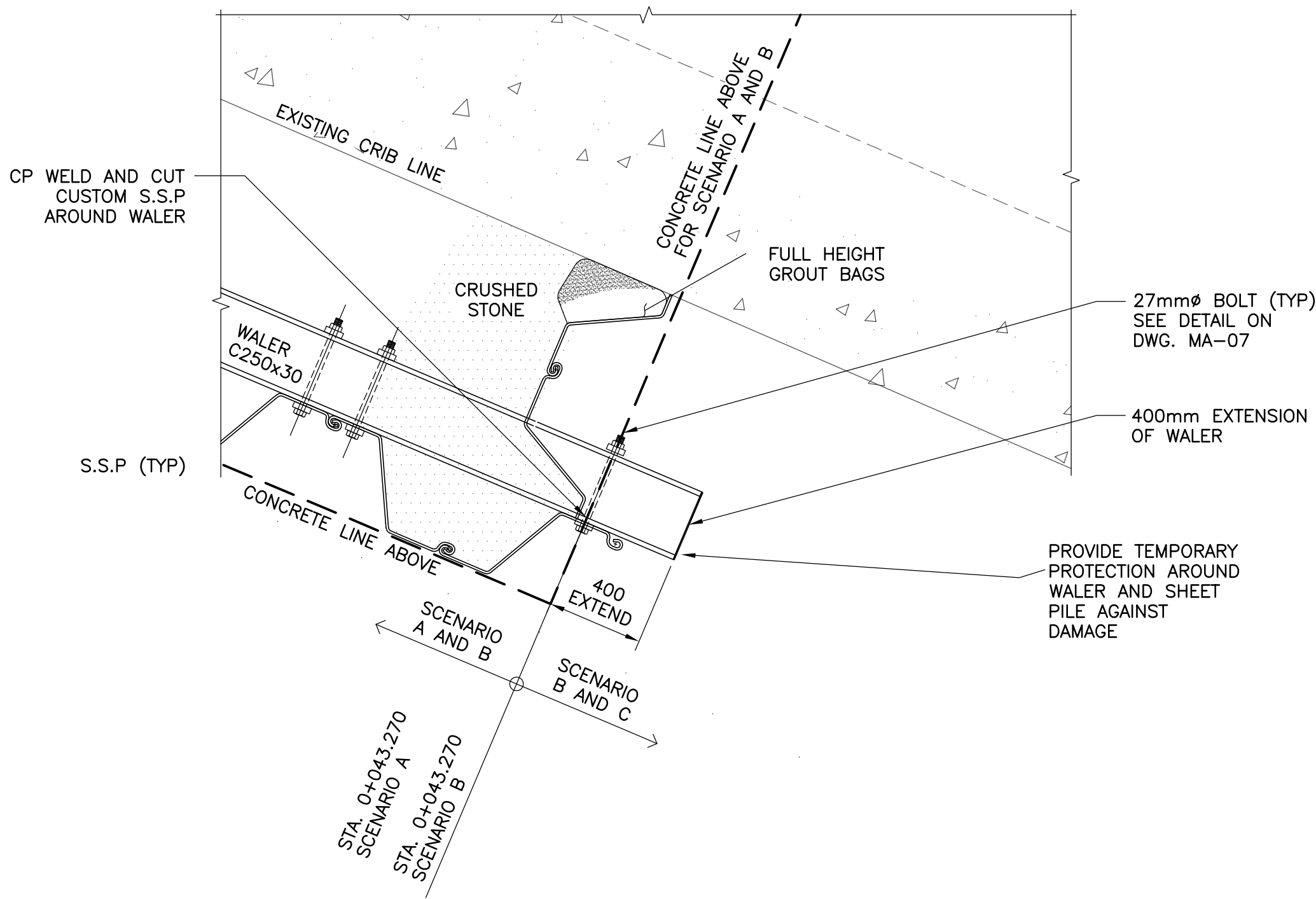
DETAIL 1
1:10
SLAB EXPANSION JOINT (EXP. JT.)



DETAIL 3
1:2
ISOLATION JOINT (ISO. JT.)



DETAIL 2
1:10
COPE BEAM EXPANSION JOINT (EXP. JT.)



DETAIL 4
1:20
TEMPORARY CLOSURE DETAIL (IF REQUIRED)

NOTE:

- S.S.P. CONNECTIONS ARE TYPICAL FOR ALL SECTIONS (UNO)
- SEE DRAWINGS MA-07 FOR CONNECTION DETAILS.