

SMALL CRAFT HARBOURS  
CENTRAL AND ARCTIC REGION



No.	Description	Dwn.By Des.Par	Date
4	ISSUED FOR TENDER	JJ	12/08/20
3	ISSUED FOR COMPLETION	JJ	17/12/14
2	ISSUED FOR FINAL REVIEW	JJ	22/10/14
1	ISSUED FOR 100% REVIEW	JJ	17/09/14

Revision / Révision

Do not scale drawings.  
Verify all dimensions and conditions on site and immediately notify the  
Departmental Representative of all discrepancies.

A	Detail No. No. du detail
B	drawing no. - where detail required dessin no. - ou detail exigé
C	drawing no. - where detailed dessin no. - où détaillé



600 COCHRANE DRIVE, 5th FLOOR  
MISSISSAUGA, ONTARIO CANADA, L3R 9K3  
TEL.: 905-475-7270 | FAX: 905-475-5994 | WWW.WSPGROUP.COM

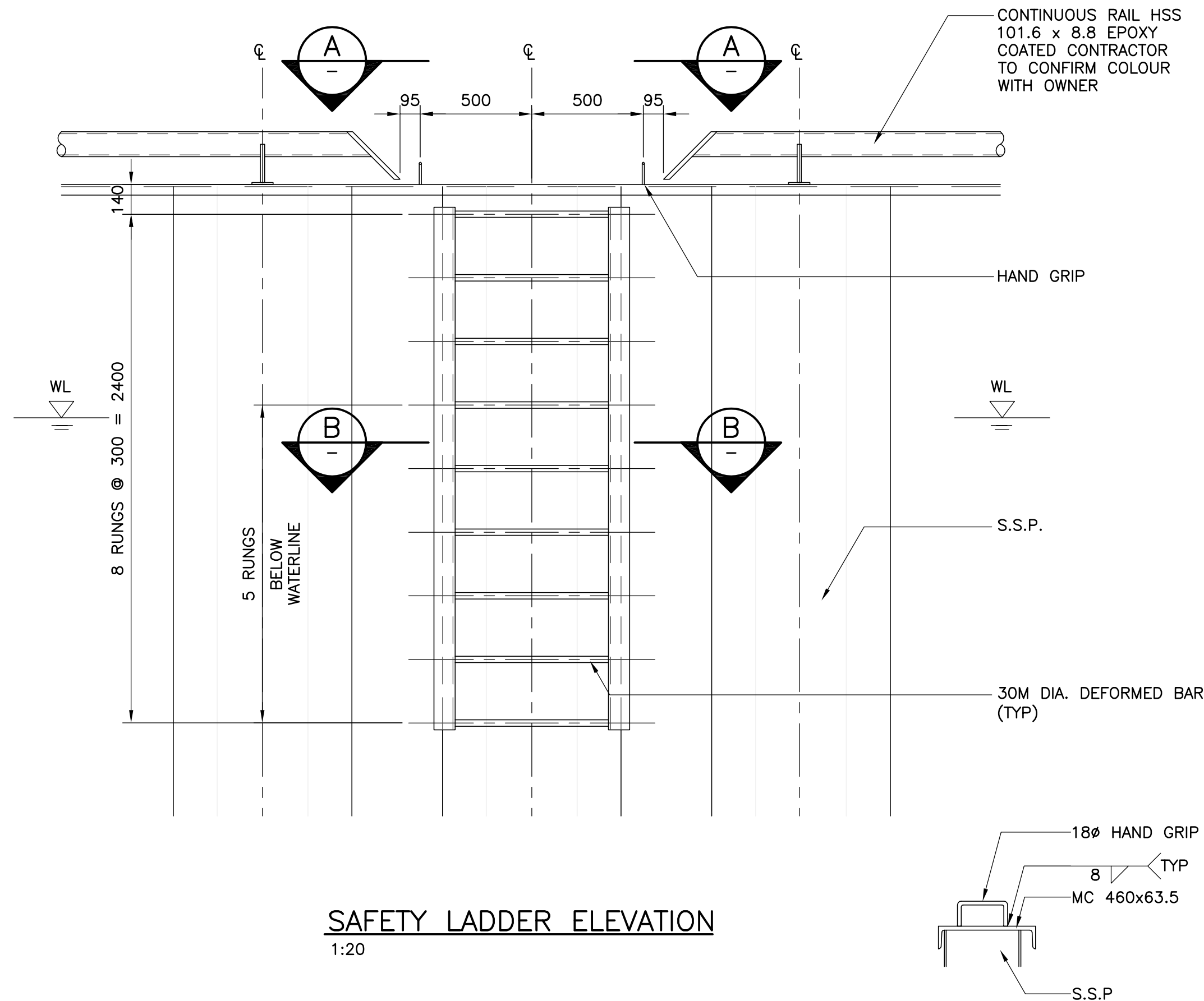
Project title / Titre du projet

PORT ELGIN  
WEST PIER  
REHABILITATION

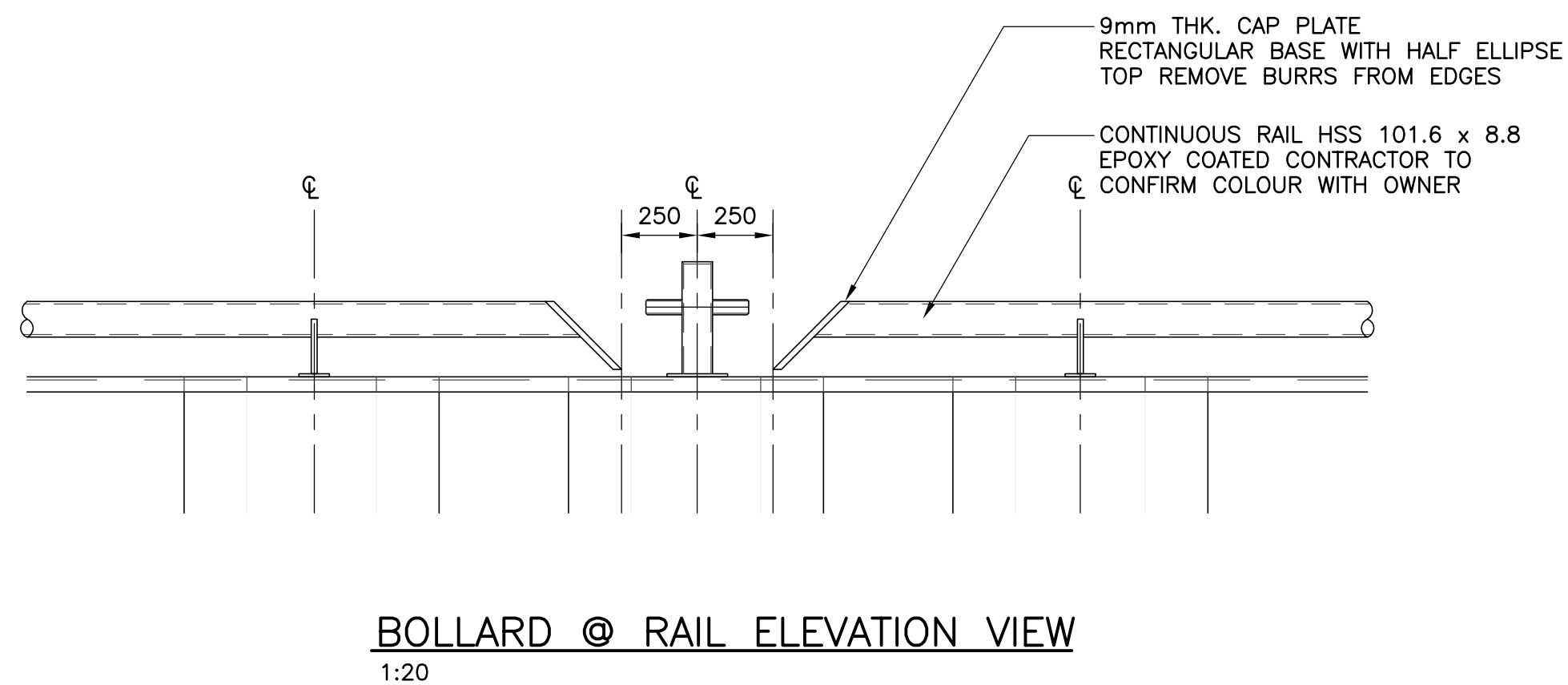
Drawing title / Titre du dessin

MISC.  
DETAILS

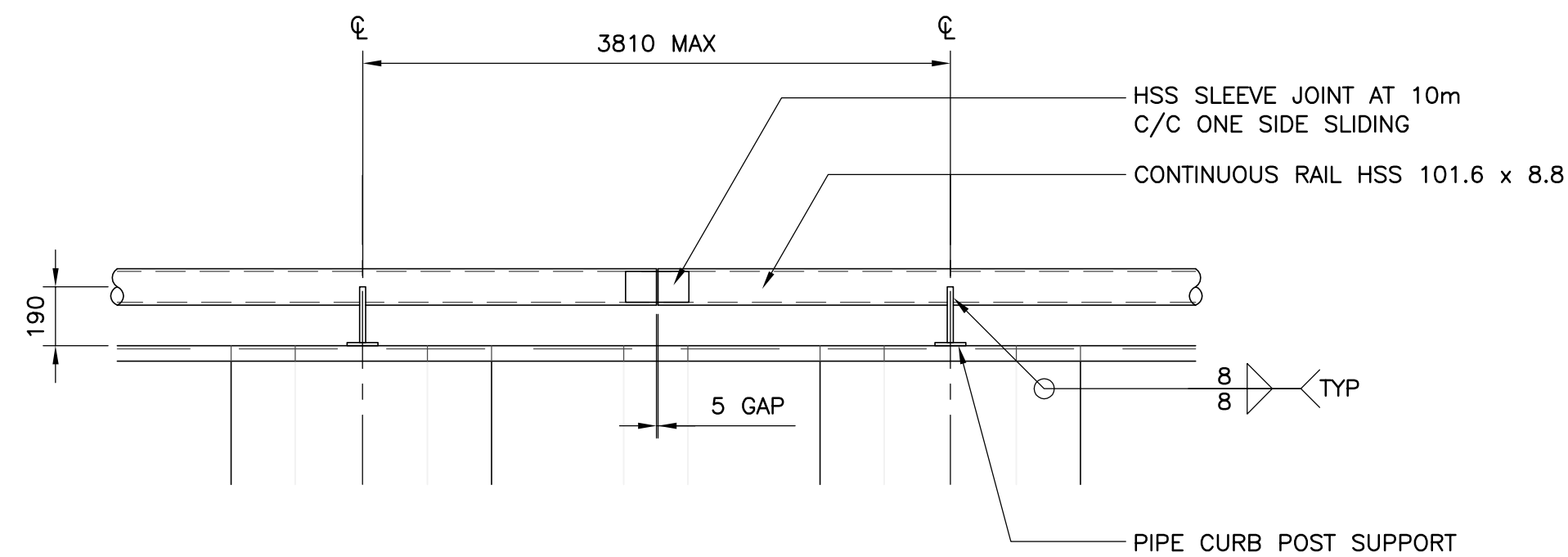
Drawn by / Dessiné par PETER REGALADO	Designed by / Conçu par MARC PICHETTE
Approved by / Approuvé par JOHN JUFFS	Drawing Date / Date du dessin MAY 8 2014
Project manager / Administrateur de projet JOHN JUFFS	
HCEW Number / Numéro de CHTI -	Drawing Number / Numéro du Dessin MA-09
Project Number / Numéro du projet 131-23620-00-100	
Sheet 11 of 12 Feuille 11 de 12	



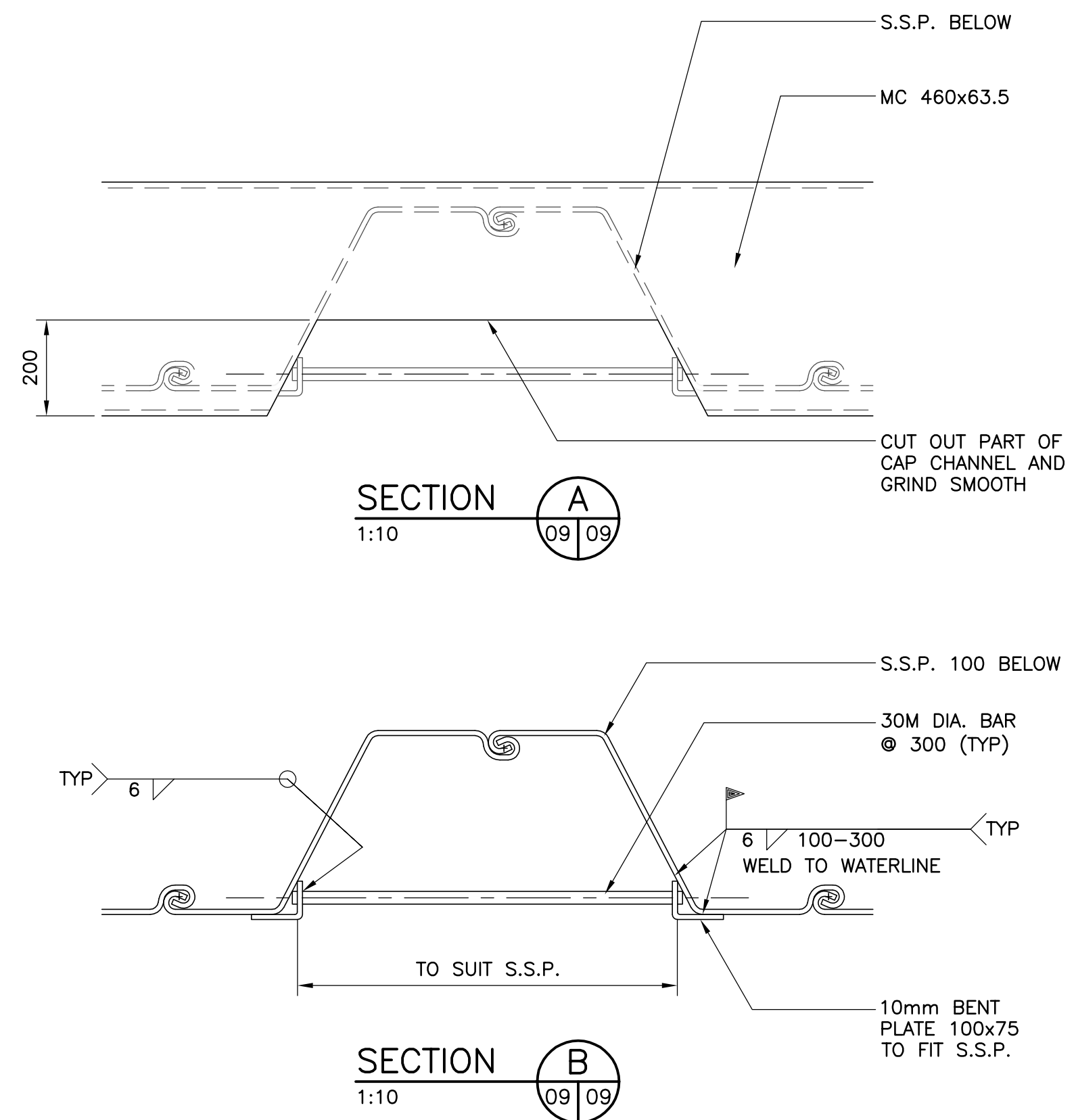
SAFETY LADDER ELEVATION  
1:20



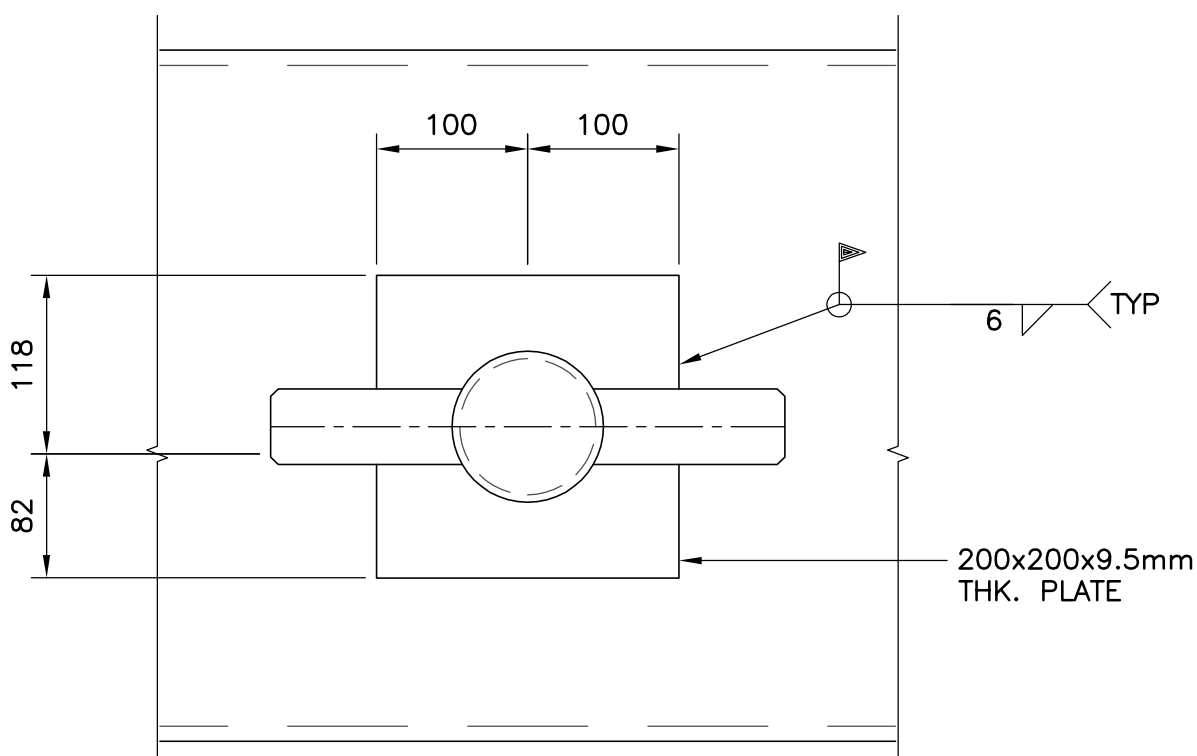
BOLLARD @ RAIL ELEVATION VIEW  
1:20



PIPE CURB ELEVATION VIEW  
1:20

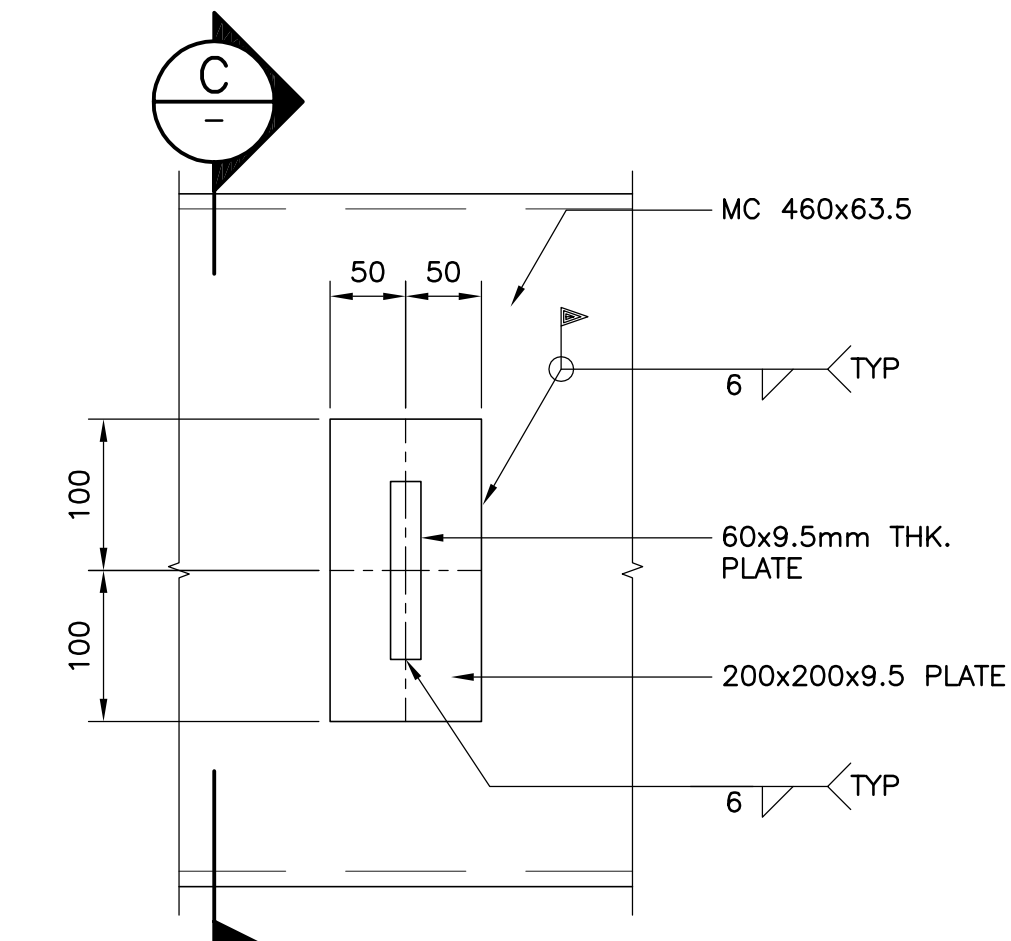


SECTION A 1:10  
SECTION B 1:10



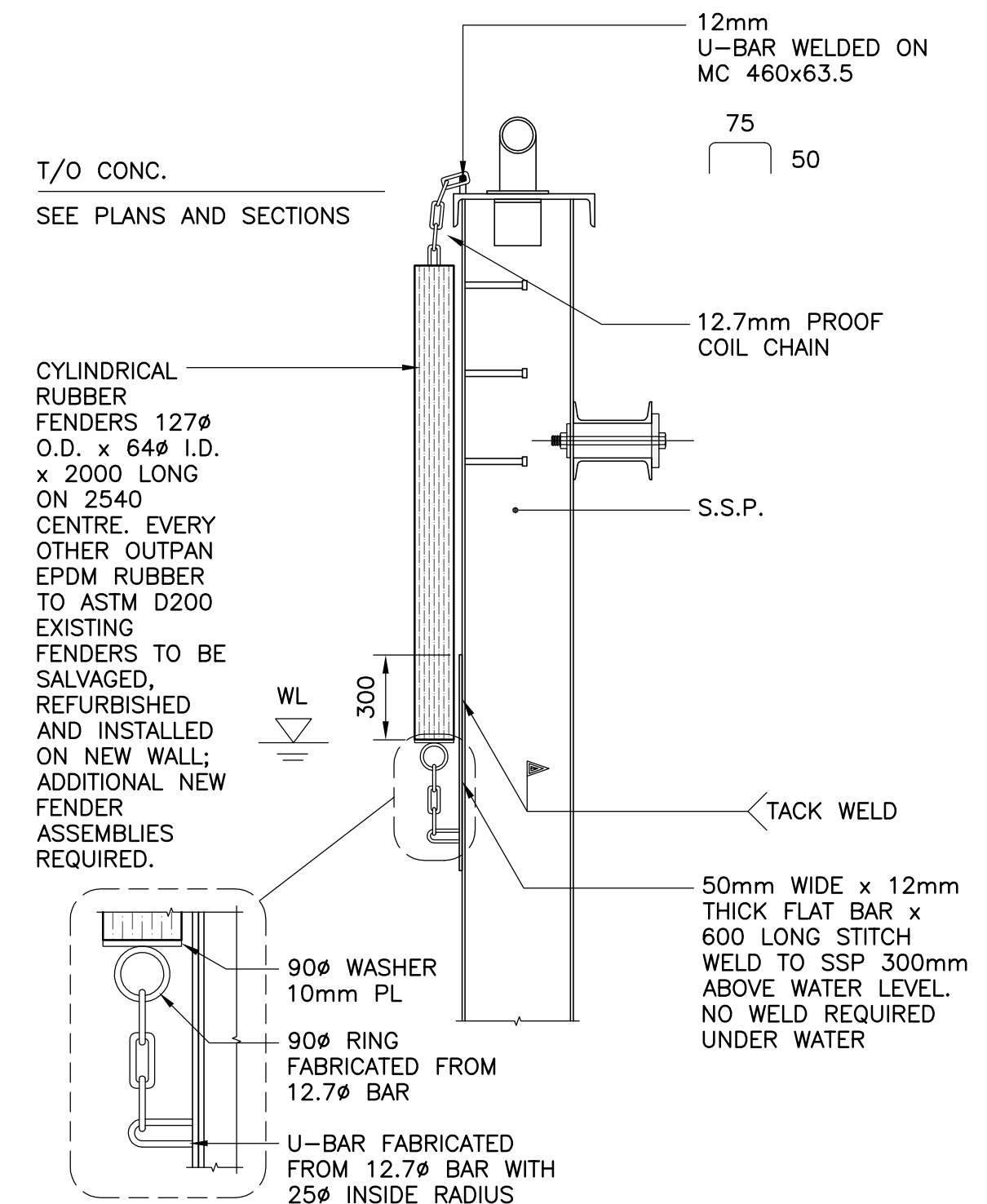
BOLLARD ANCHOR BOLT PLAN  
1:5

NOTE: TO BE CENTRALLY PLACED ON INPANS

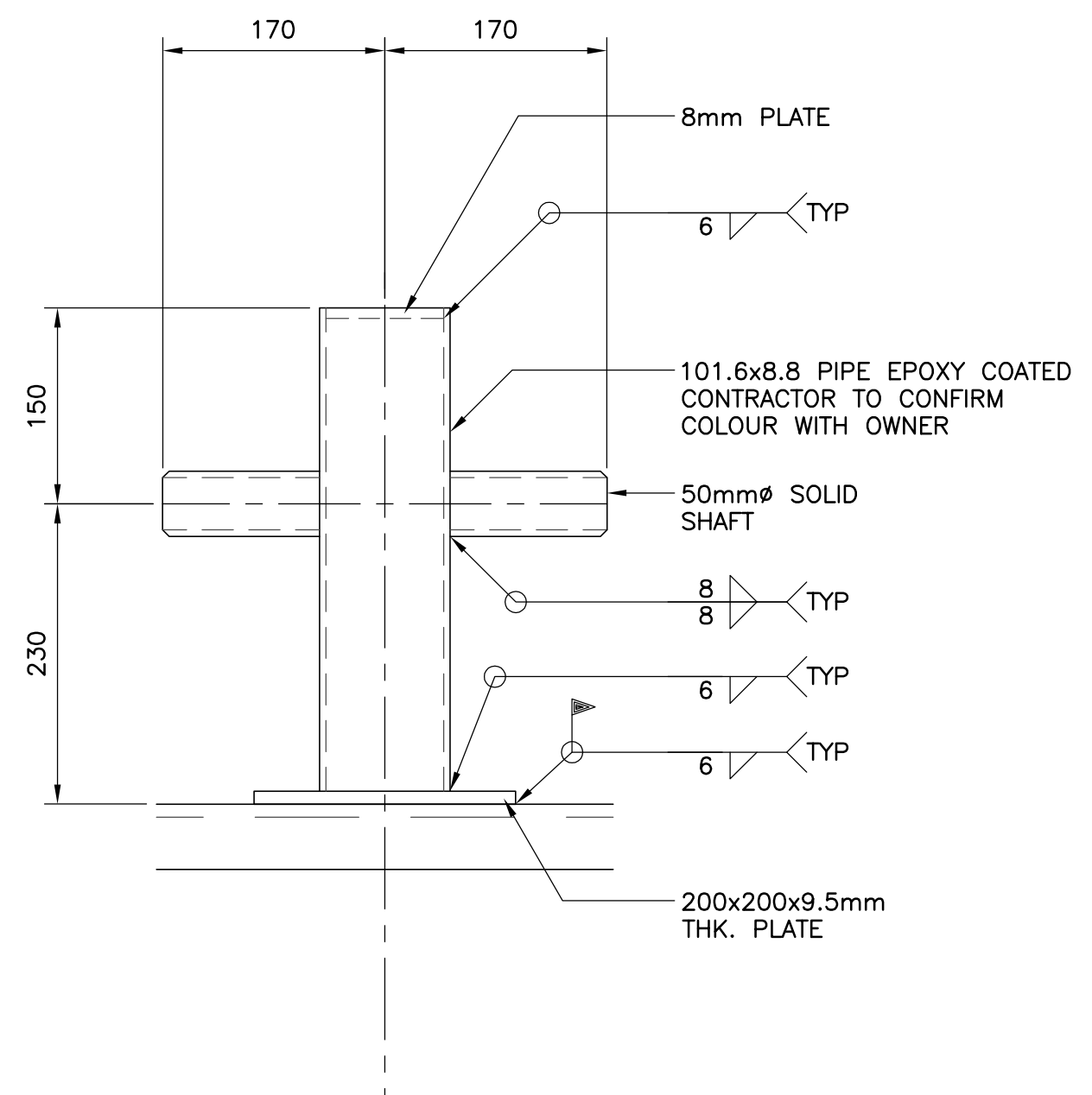


PIPE CURB POST SUPPORT PLAN  
1:5

NOTE: TO BE CENTRALLY PLACED ON INPANS

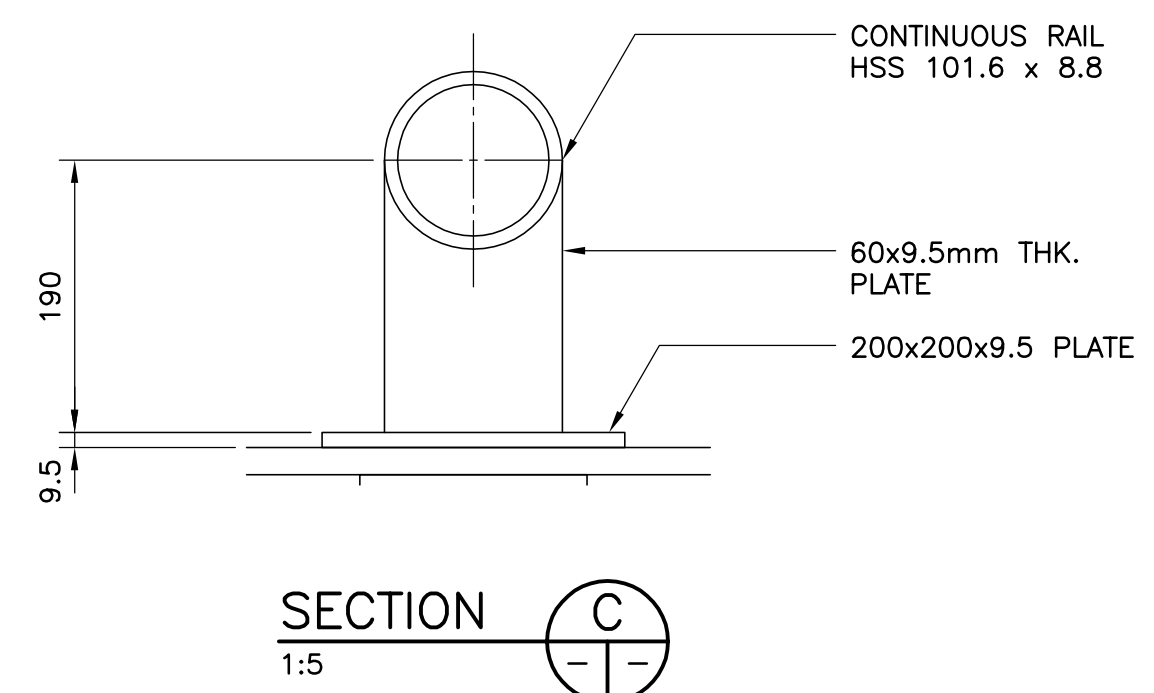


RUBBER FENDER DETAIL  
1:20  
TYPICAL ON EVERY OUTPAN



BOLLARD DETAIL  
1:5

NOTE: TO BE CENTRALLY PLACED ON INPANS



SECTION C 1:5