

Overview of rock slope



Photo Taken: June 22, 2016

CONSULTING ENGINEERS & SCIENTISTS • www.eba.ca



Photo Taken: June 22, 2016

CONSULTING ENGINEERS & SCIENTISTS • www.eba.ca

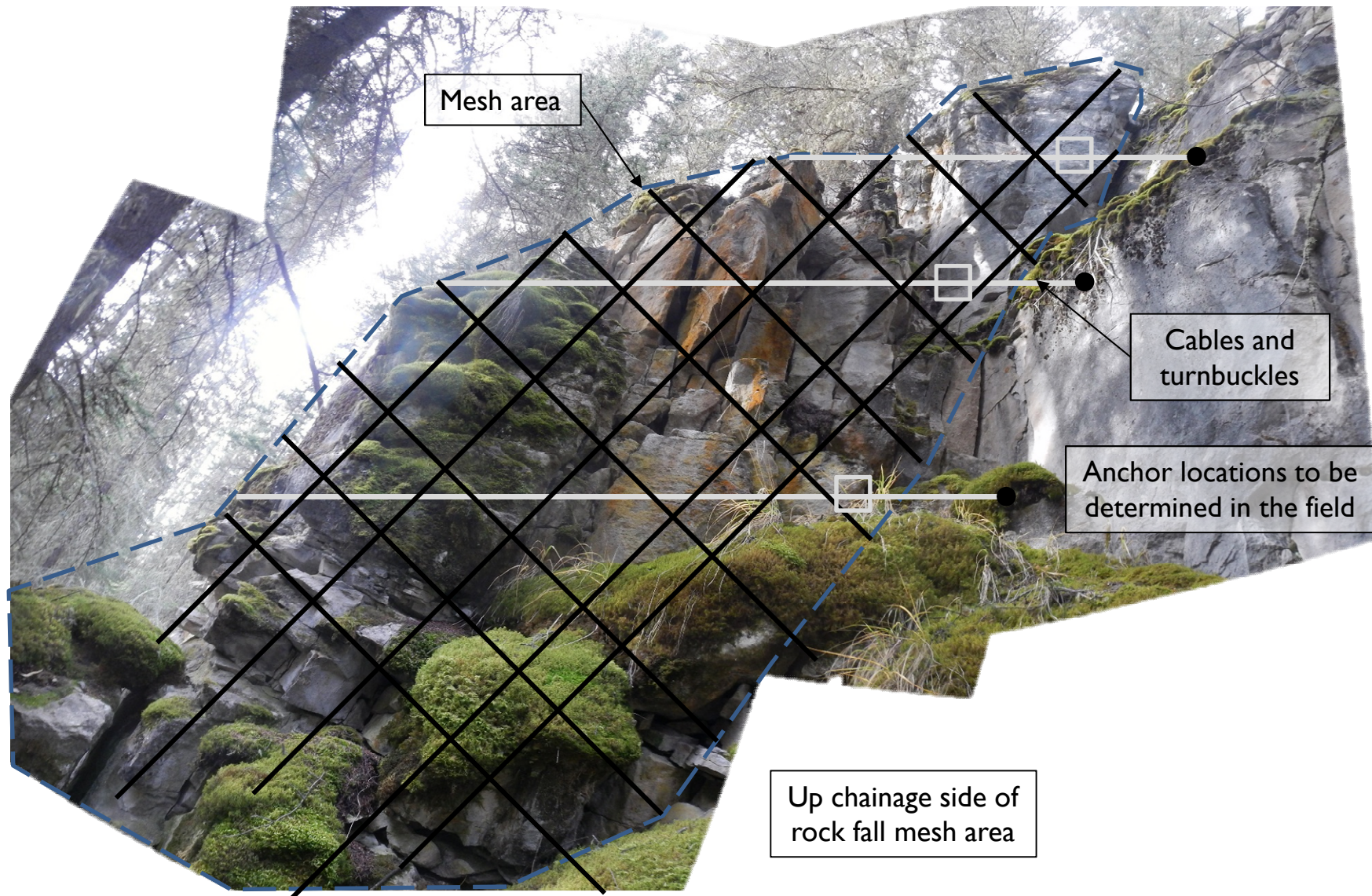


Photo Taken: September 22, 2015

CONSULTING ENGINEERS & SCIENTISTS • www.eba.ca



Photo Taken: October 16, 2015

CONSULTING ENGINEERS & SCIENTISTS • www.eba.ca

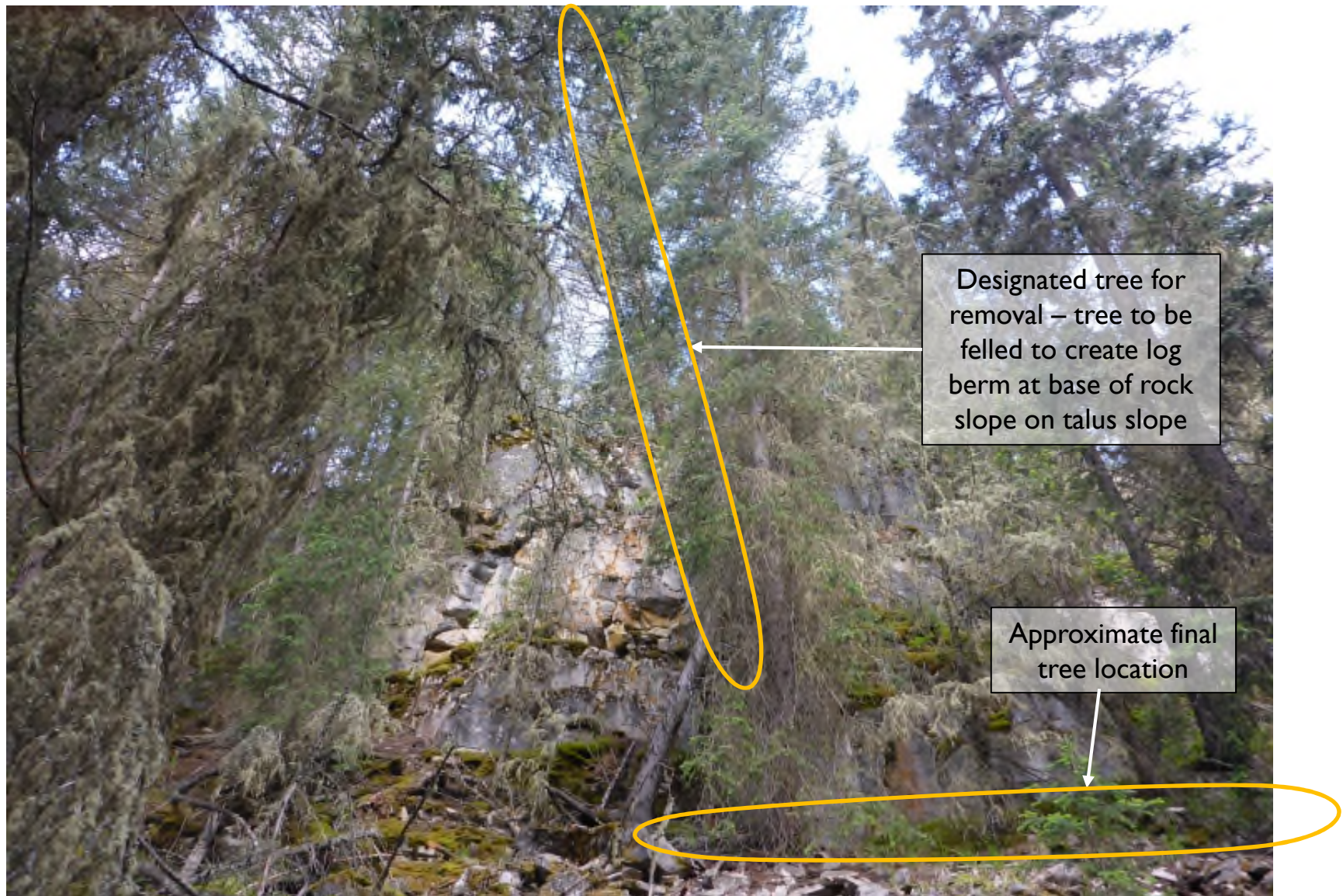


Photo Taken: June 22, 2016

CONSULTING ENGINEERS & SCIENTISTS • www.eba.ca

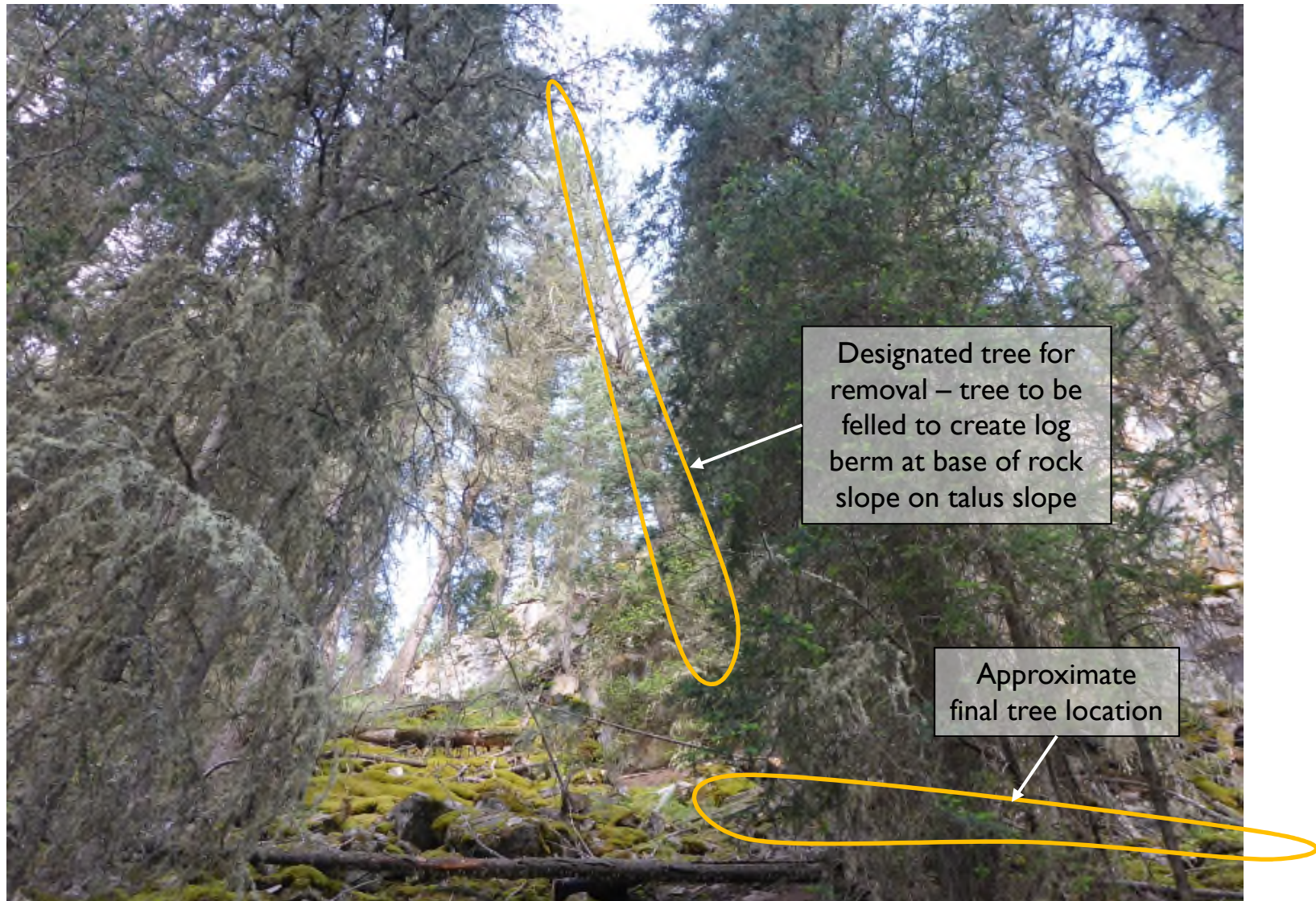


Photo Taken: June 22, 2016

CONSULTING ENGINEERS & SCIENTISTS • www.eba.ca

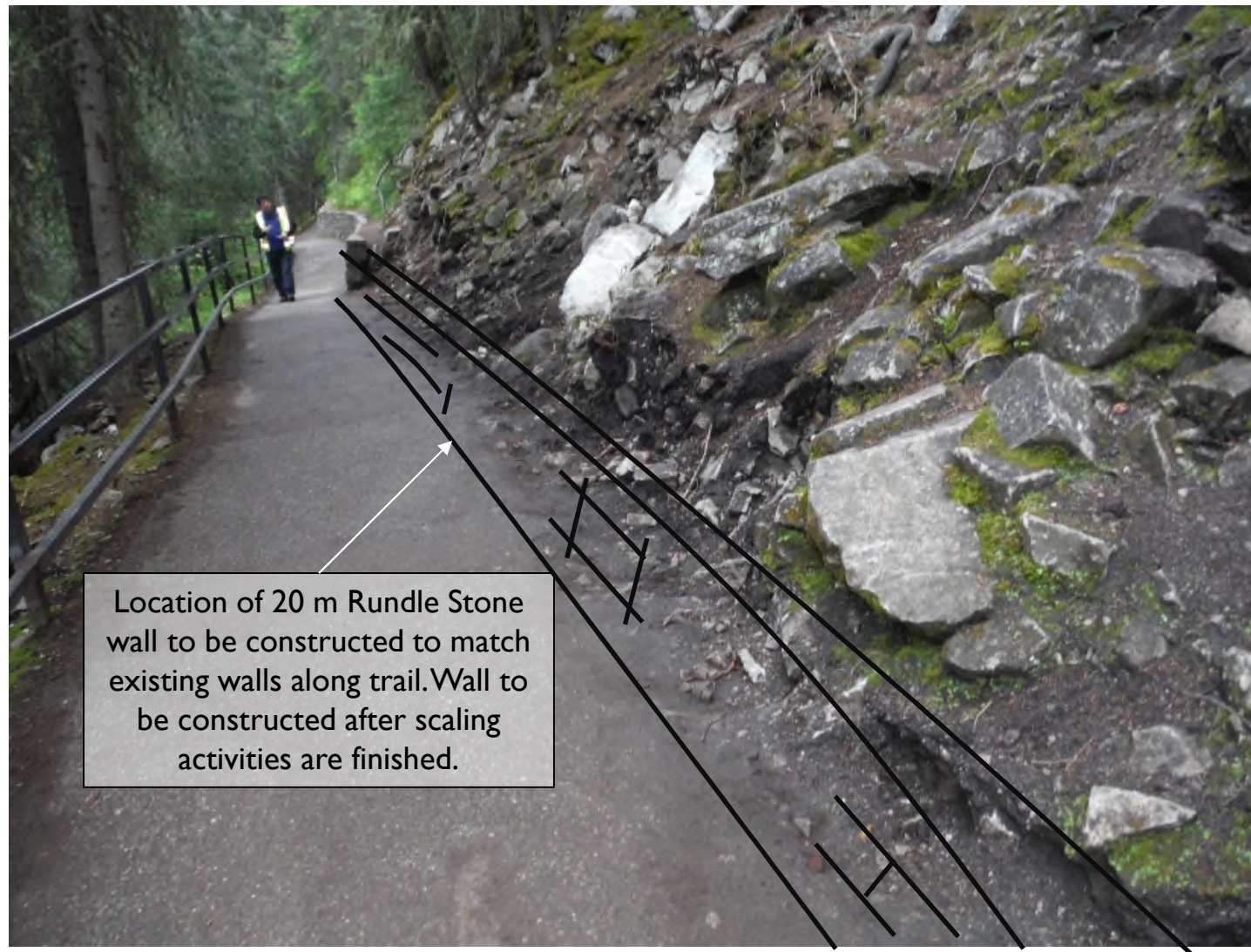


Photo Taken: June 22, 2016

CONSULTING ENGINEERS & SCIENTISTS • www.eba.ca



Photo Taken: June 22, 2016

CONSULTING ENGINEERS & SCIENTISTS • www.eba.ca



Photo Taken: June 22, 2016

CONSULTING ENGINEERS & SCIENTISTS • www.eba.ca

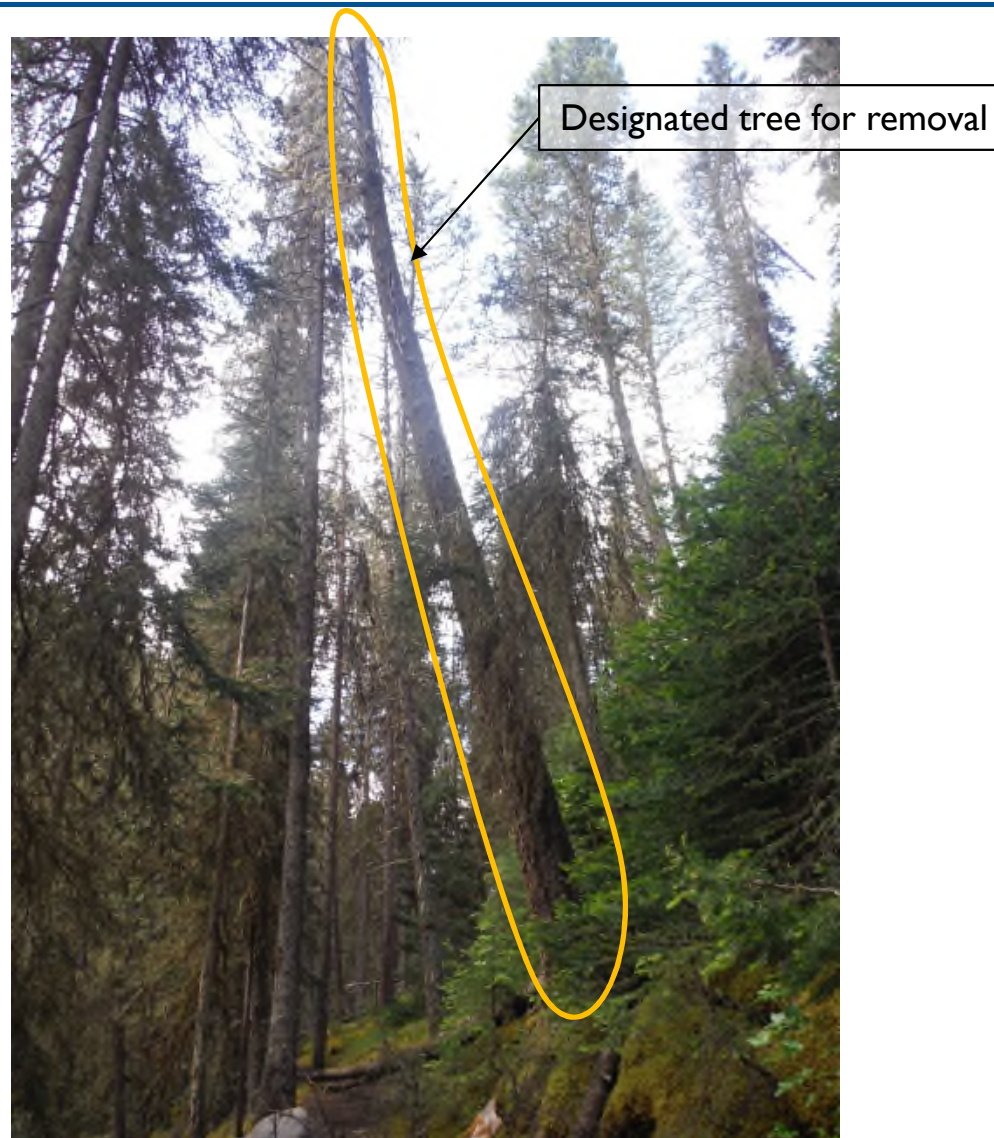


Photo Taken: September 27, 2015

CONSULTING ENGINEERS & SCIENTISTS • www.eba.ca

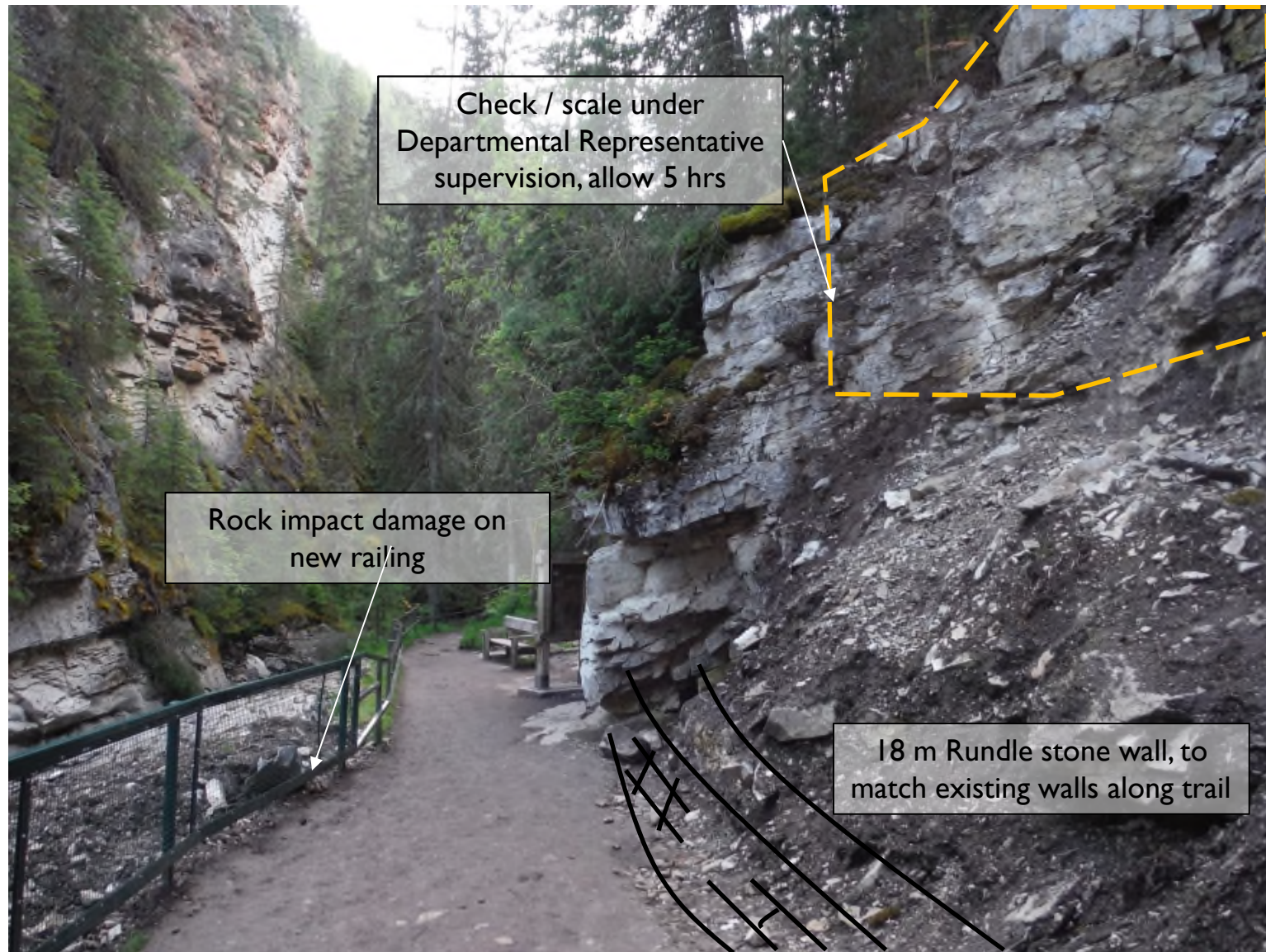


Photo Taken: June 22, 2016

CONSULTING ENGINEERS & SCIENTISTS • www.eba.ca

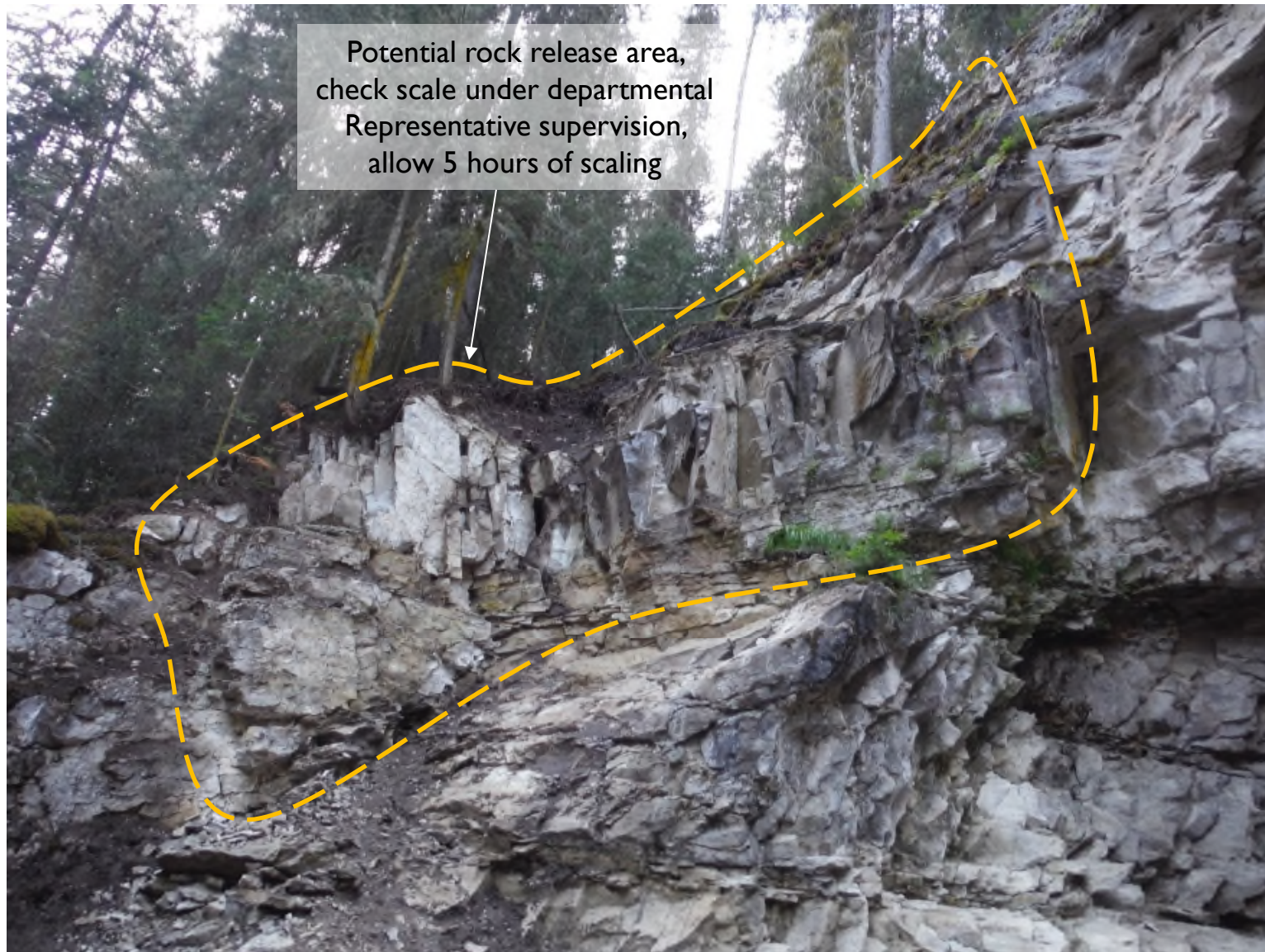


Photo Taken: June 22, 2016

CONSULTING ENGINEERS & SCIENTISTS • www.eba.ca



Photo Taken: June 22, 2016

CONSULTING ENGINEERS & SCIENTISTS • www.eba.ca



Photo Taken: June 22, 2016

CONSULTING ENGINEERS & SCIENTISTS • www.eba.ca



Photo Taken: June 22, 2016

CONSULTING ENGINEERS & SCIENTISTS • www.eba.ca



Photo Taken: June 22, 2016

CONSULTING ENGINEERS & SCIENTISTS • www.eba.ca



Photo Taken: June 22, 2016

CONSULTING ENGINEERS & SCIENTISTS • www.eba.ca



Photo Taken: June 22, 2016

CONSULTING ENGINEERS & SCIENTISTS • www.eba.ca



Photo Taken: June 22, 2016

CONSULTING ENGINEERS & SCIENTISTS • www.eba.ca



Photo Taken: May, 2013

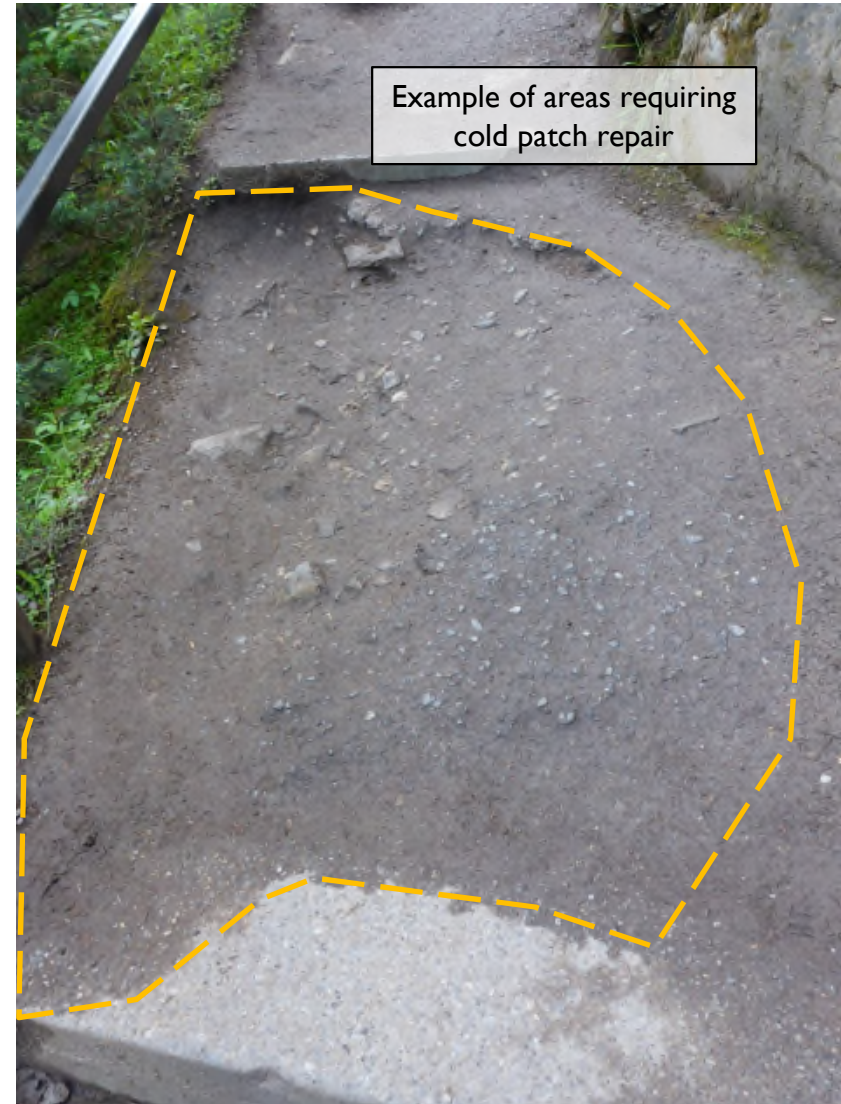


Photo Taken: June 22, 2016

CONSULTING ENGINEERS & SCIENTISTS • www.eba.ca



Photo Taken: June 22, 2016

CONSULTING ENGINEERS & SCIENTISTS • www.eba.ca



32 m rock bolts
(max 6 m), location
to be determined in
field

Photo Taken: May, 2013

CONSULTING ENGINEERS & SCIENTISTS • www.eba.ca



Foundation to be repaired.
Soil and vegetation to be
removed down to clean
bedrock or concrete and
infilled with Emaco nanocrete
R4 or approved equivalent.

Photo Taken: June 22, 2016

CONSULTING ENGINEERS & SCIENTISTS • www.eba.ca



Photo Taken: June 22, 2016

CONSULTING ENGINEERS & SCIENTISTS • www.eba.ca

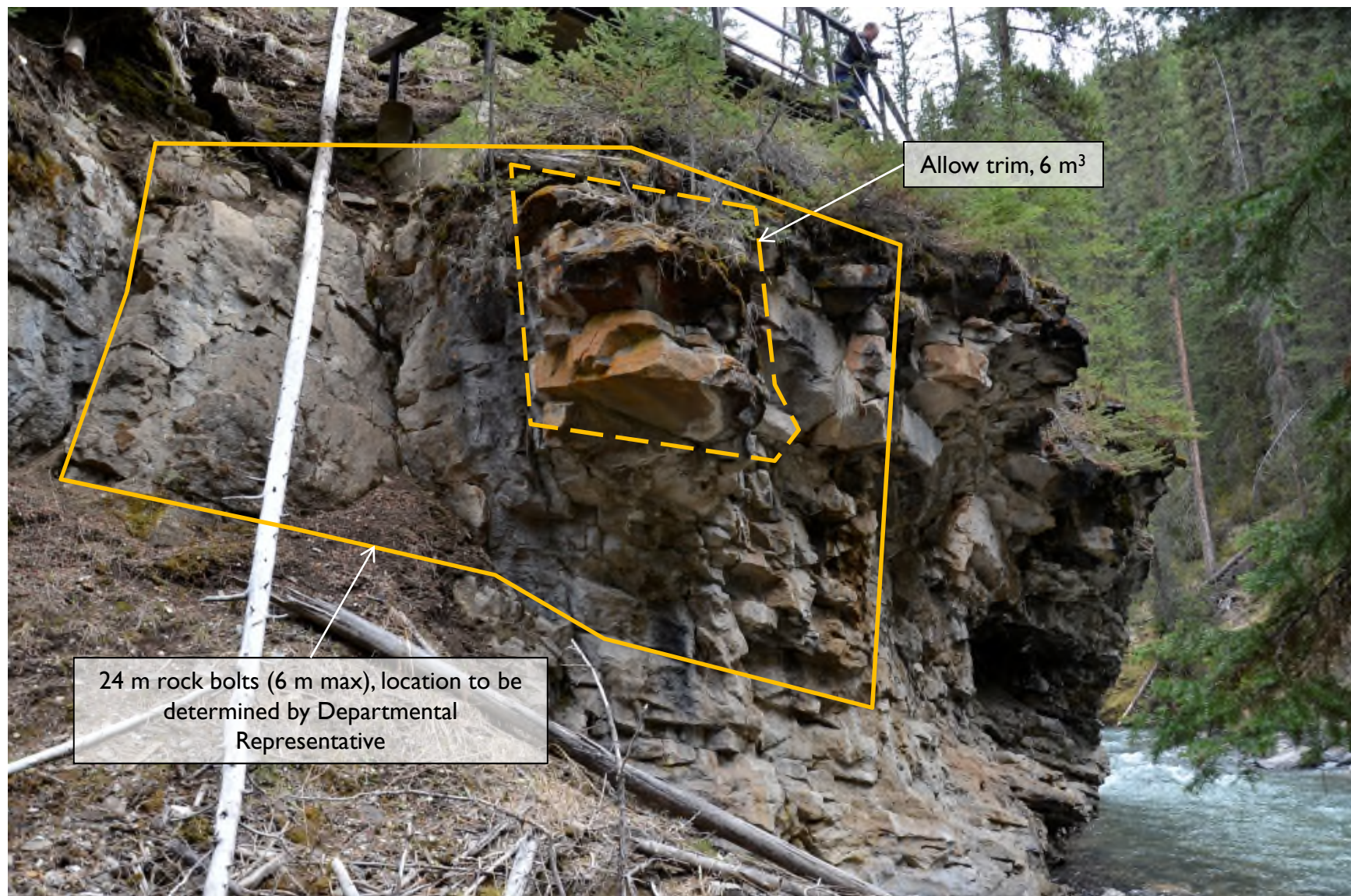


Photo Taken: June 22, 2016

CONSULTING ENGINEERS & SCIENTISTS • www.eba.ca



Photo Taken: June 22, 2016

CONSULTING ENGINEERS & SCIENTISTS • www.eba.ca



Photo Taken: N/A

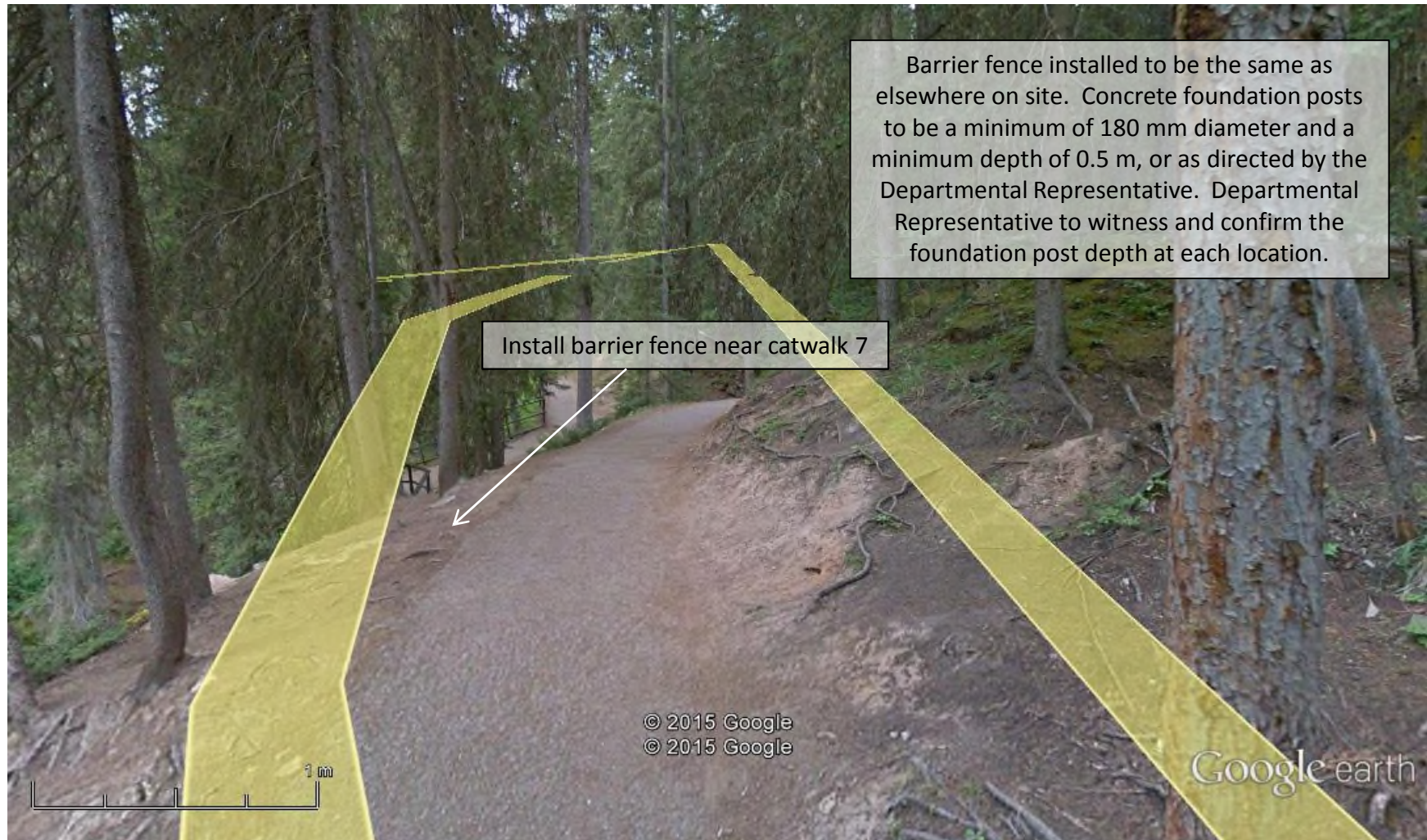






Photo Taken: June 22, 2016

CONSULTING ENGINEERS & SCIENTISTS • www.eba.ca



Example of areas requiring cold patch repair

Summary of Cold Patch Locations

Location	Estimated Cold Patch Area (m ²)
0+512 to 0+545	45
0+789 to 0+815	9
0+815 to 0+867	60
0+953 to 0+983	5
1+020	10
1+020 to 1+060	15
~2+100 to 2+650	50
Junction to Ink Pots Trail (~2+610 m) to Upper Lookout	15
Total	209