

August 29, 2016

MORDEN RESEARCH AND DEVELOPMENT CENTRE
CONTRACT NO. 24 – PARKING LOT PAVING
CONTRACT #465-1-13-C24

Questions and Answers

Q1 - Construction note #4 indicates that the existing granular surface is to be levelled and compacted. However, the elevations shown would require removal of about 3-4" of the existing granular material to achieve the final grades. Please clarify?

A1 - The final grades in our specification drawing is based on the original design drawing by KGS with 75 mm added to their design elevations for the top of new asphalt. Aside from minor leveling that may be required, the surface will not be required to be removed and asphalt placed directly on the compacted surface.

Q2 - I visited the site, dug a test hole and noted that there is a thin layer of 3/4" limestone on the surface with A base beneath it. If the top 3-4" of the existing surface is remove to achieve design grades, will the asphalt pavement be placed on the resulting material regardless?

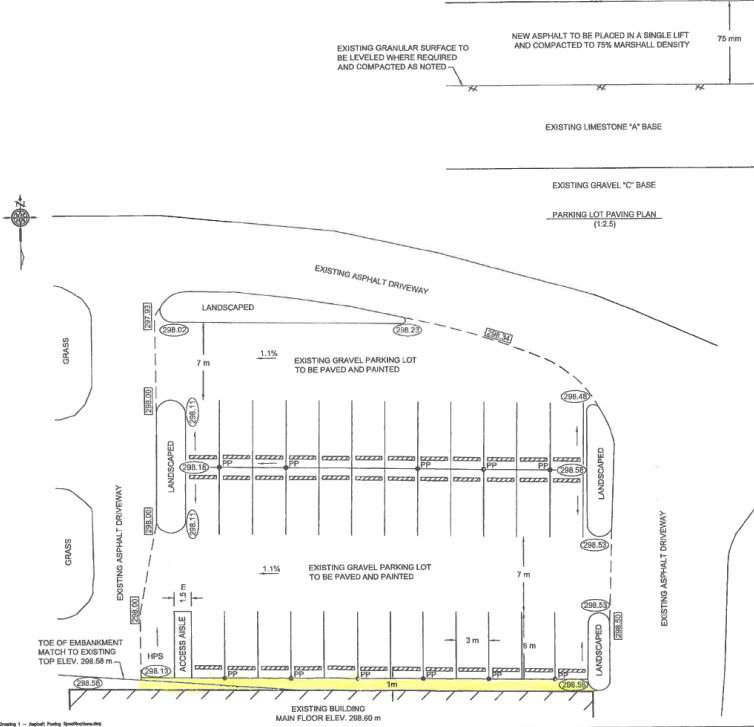
A2 – See note above.

Q3 - Will asphalt paving extend to the edge of the building on the south side of the lot or is it to be offset at one meter? See the highlighted area on the attached drawing.

A3 - The entire gravel parking lot, including up to the building is required to be paved and the existing asphalt sawcut where shown and the new asphalt parking lot blended in.

CONSTRUCTION NOTES

- 1) REMOVE EXISTING CONCRETE CURBS PLACED IN PARKING STALLS. STORE ON SITE UNTIL THE ASPHALT PAVING IS COMPLETED AND THEN REPLACE IN THE ORIGINAL POSITIONS.
- 2) PLACE A COLLAR AROUND EACH PARKING PEDESTAL TO PREVENT THE PEDESTALS FROM ADHERING TO THE ASPHALT.
- 3) SAWCUT THE EXISTING ASPHALT ROADWAY AT THE AREAS SHOWN.
- 4) LEVEL THE TOP SURFACE OF THE EXISTING GRANULAR PARKING LOT WHERE REQUIRED AND ENSURE IT GRADES AWAY FROM THE EXISTING BUILDING.
- 5) HARD COMPACT THE UPPER 200 mm OF THE GRANULAR SURFACE OF THE PARKING LOT IN ITS ENTIRETY WITH A SMOOTH FACED ROLLER IN VIBRATORY MODE TO 100% MDD.
- 6) PLACE A 75 mm THICK LAYER OF ASPHALT CONFORMING TO MANITOBA INFRASTRUCTURE AND TRANSPORTATION DEPARTMENTS BITUMINOUS "A" (OR EQUIVALENT TYPE) IN A SINGLE LIFT AND COMPACT TO 97% MARSHALL DENSITY.
- 7) PAINT PARKING STALLS WITH APPROPRIATE YELLOW PAINT.



- LEGEND**
- MDD = MAXIMUM DRY DENSITY
 - HPS = HANDICAP PARKING STALL
 - CONCRETE CURB TO BE REMOVED AND REPLACED
 - (298.20) FINAL GRADE
 - (298.00) APPROXIMATE GRADE OF EXISTING ASPHALT BY OTHERS.
 - PP PARKING PEDESTAL
 - 1.1% DRAINAGE DIRECTION
 - - - - - LOCATION TO SAWCUT EXISTING ASPHALT DRIVEWAY AND BLEND IN NEW ASPHALT PARKING LOT

NOTES

- GIVEN THE SITUATION OF THE BUILDING AND CURRENT GRADES THE ELEVATIONS IN THE DRAWING ARE BASED ON THE DESIGN DRAWING R-2014-001, SHEET No. C02 BY KGS GROUP - CONSULTING ENGINEERS.
- ELEVATIONS ON DRAWING ARE TO BE VERIFIED BY CONTRACTOR TO ENSURE PROPER DRAINAGE.

NO.	DATE	ISSUE / REVISION
1	1 JULY 2016	CONSTRUCTION

ENG-TECH
Engineering & Technology
1000 Lakeshore Blvd. East, Suite 1000
Scarborough, Ontario M1V 4R7
Tel: (416) 291-1111

PCO
Professional Consulting Organisation
2103 Finch Avenue East, Suite 101
Markham, Ontario L3R 9Y7
Tel: (905) 479-8888

AGRICULTURE AND AGRI-FOOD CANADA PROJECT

PARKING LOT ASSESSMENT - MORFEN, MANITOBA

PARKING LOT PAVING DETAILS

SCALE: 1:250	DATE: JULY 2016
DRAWN BY: ALH	CHECKED BY: ALH
PROJECT: 16-065-01	SHEET NO.: 1 of 1

\\s011\proj\2016\16-065-01\02_AspHt_Pave_Lot\16065-01-02-Asphalt_Paving_Details.dwg 1 - Asphalt Paving Details.dwg