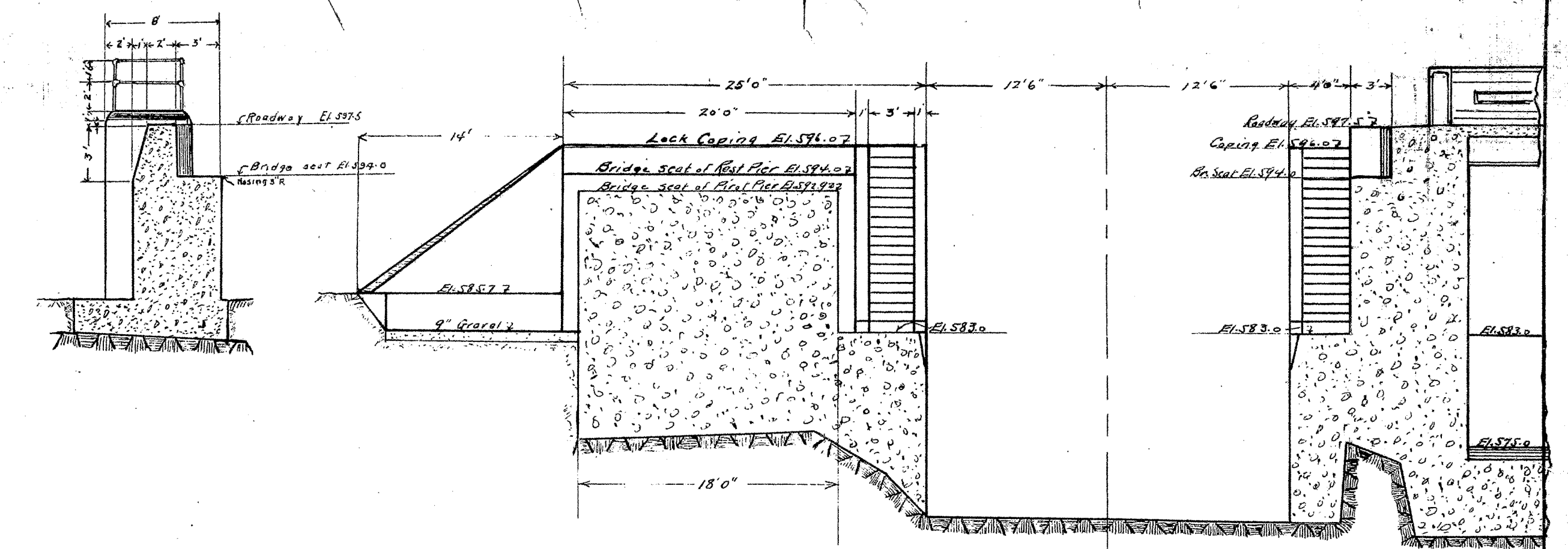
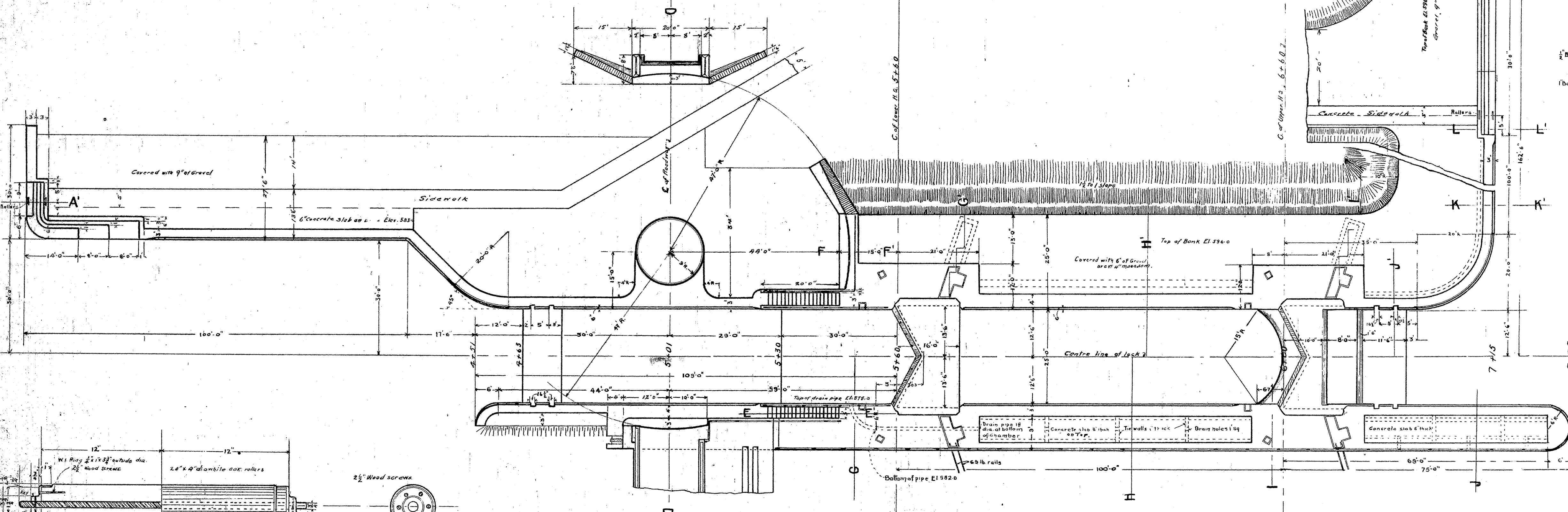


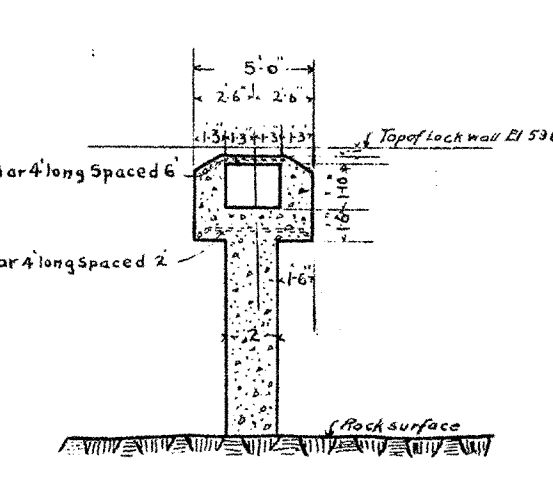
SECTIONAL ELEVATION ON CENTRE LINE



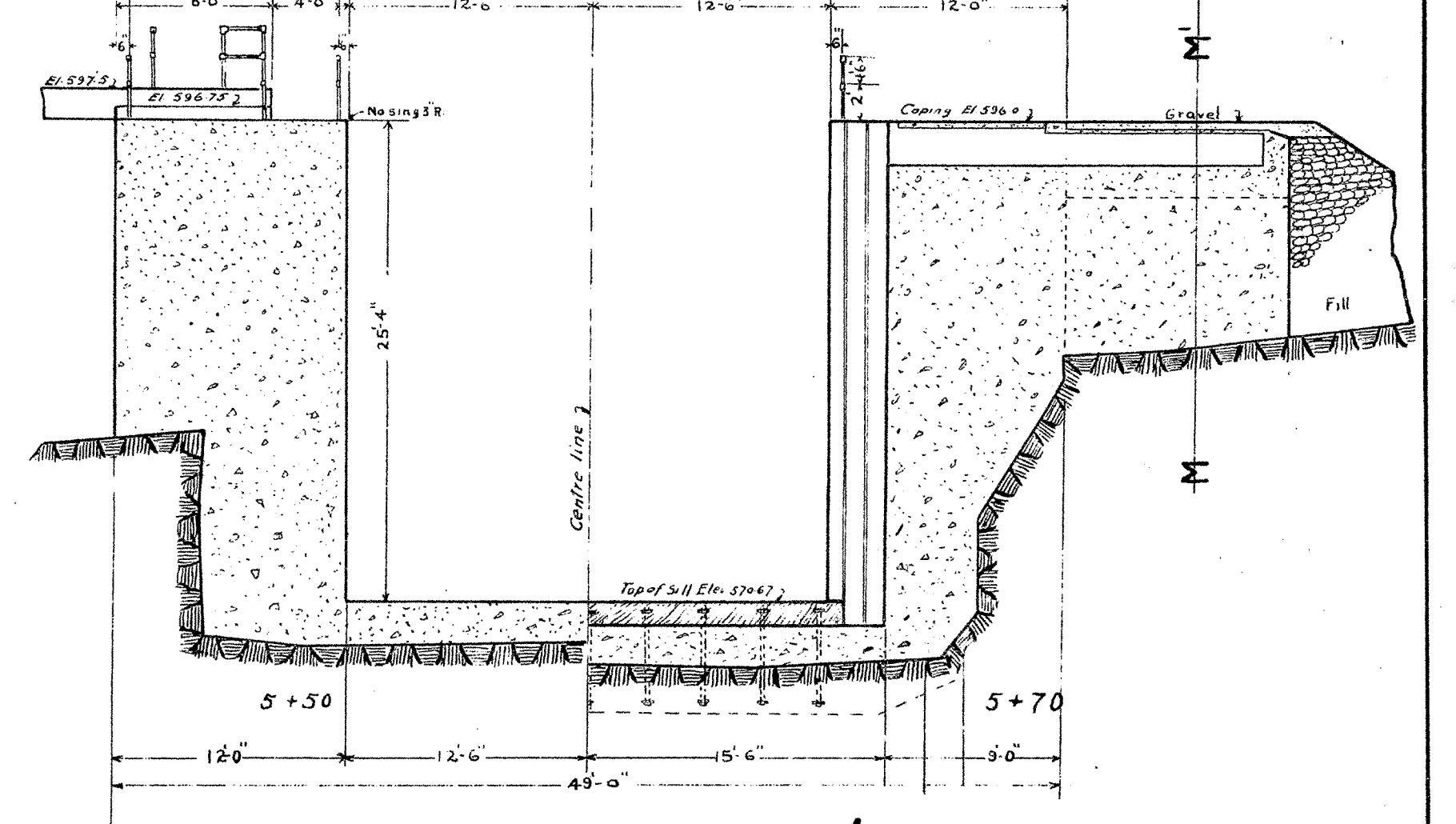
SECTION ON D-D'



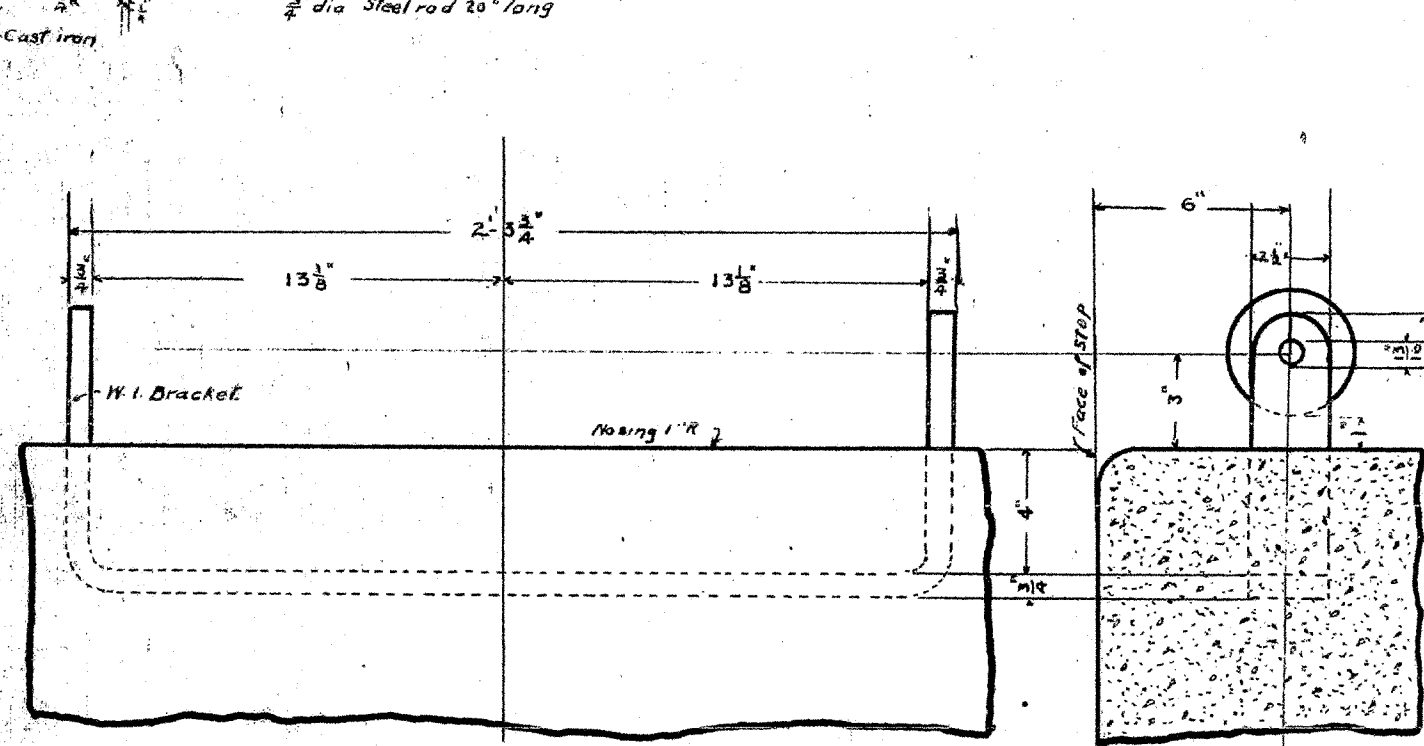
PLAN



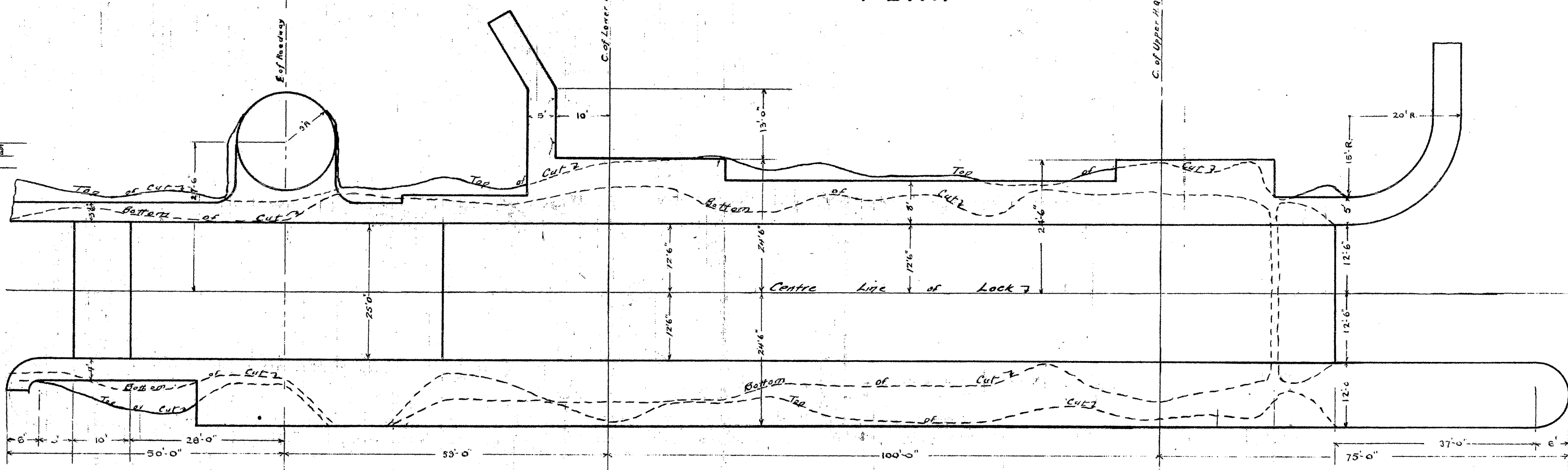
SECTION ON M-M'



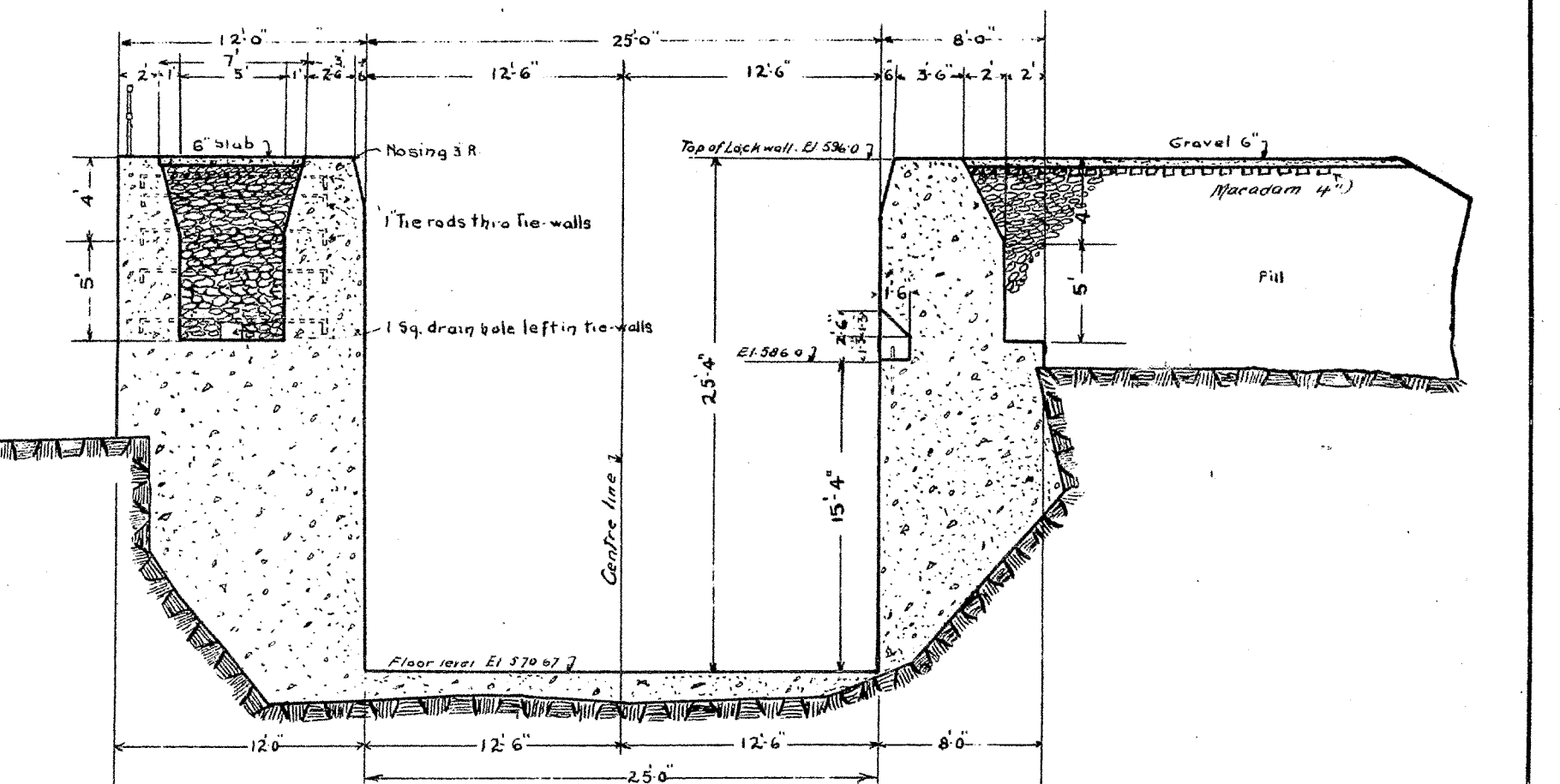
SECTION ON G-G'



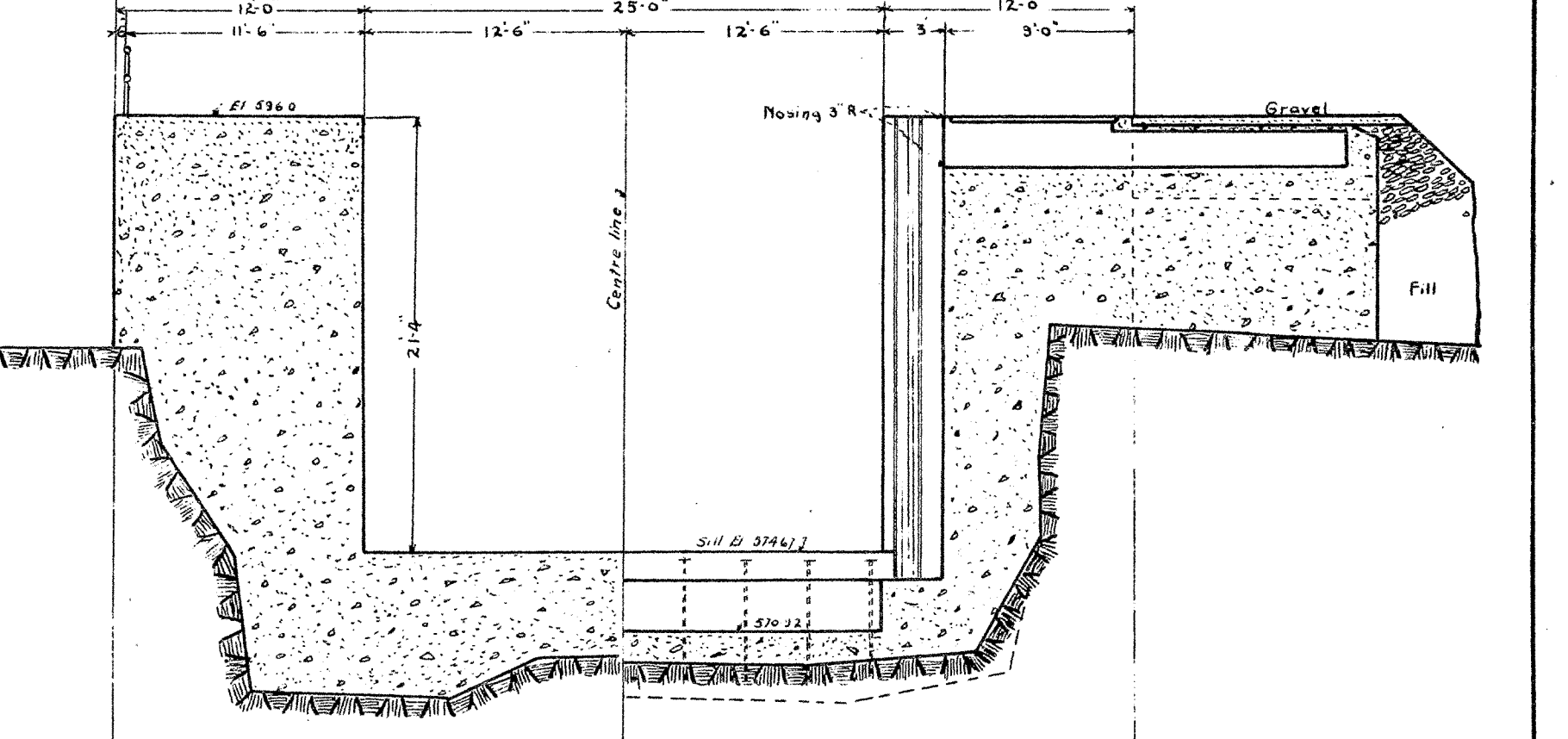
DETAIL OF ROLLER & BRACKET
Scale 2 in = 1 ft



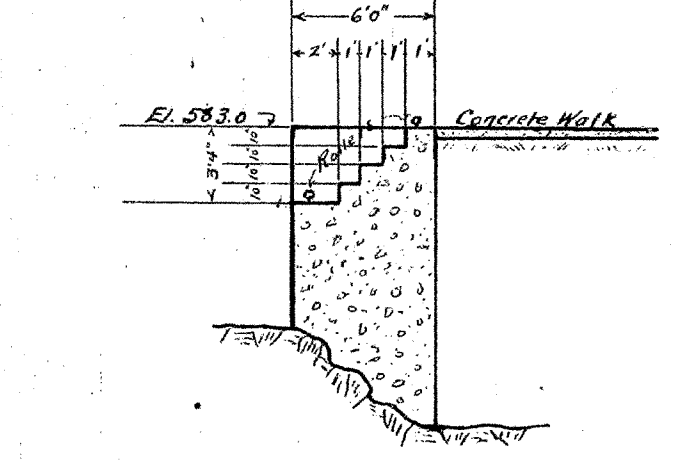
EXCAVATION PLAN



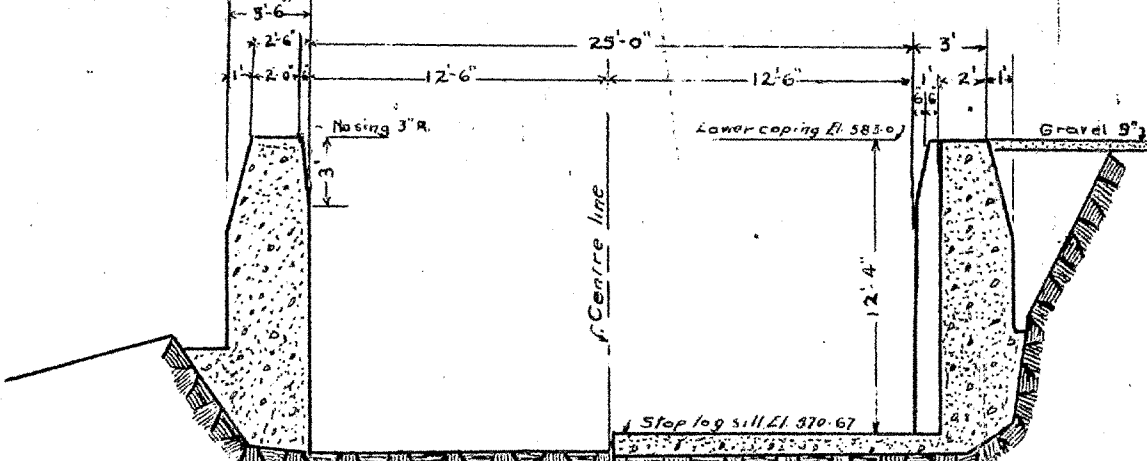
SECTION ON H-H'



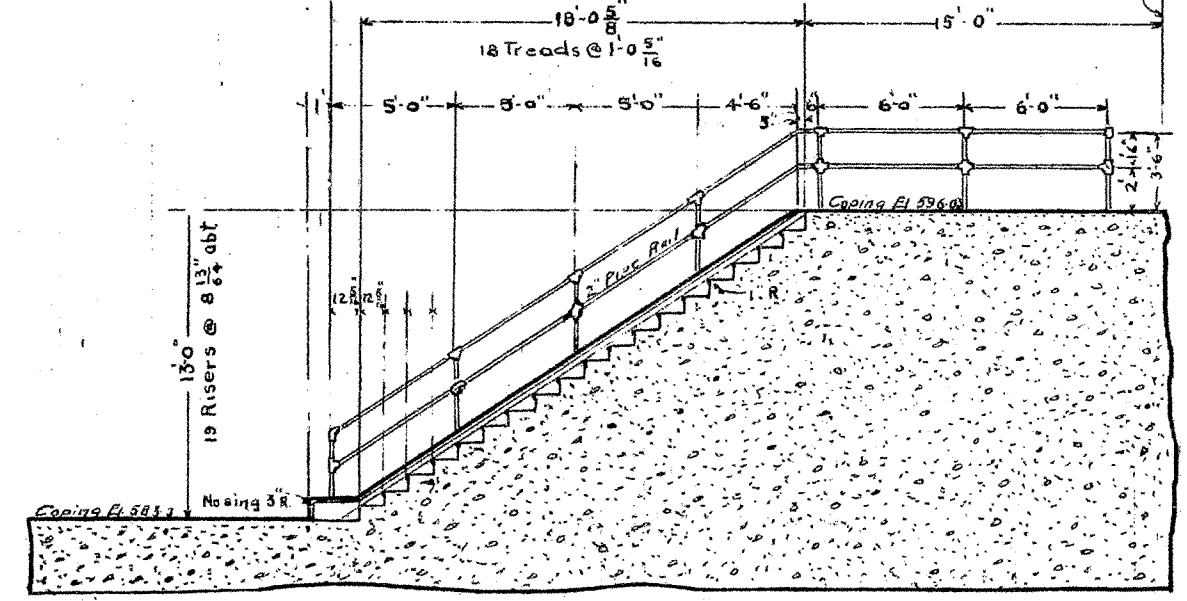
SECTION ON I-I'



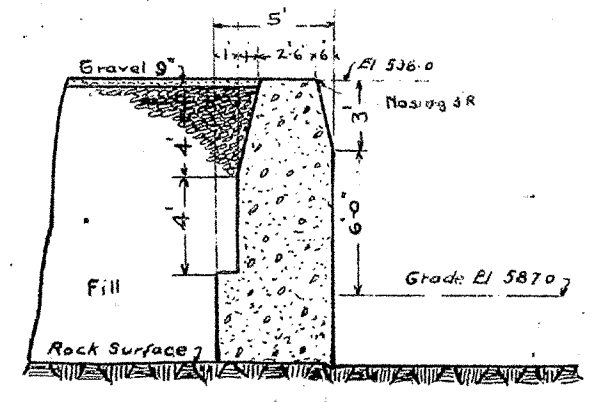
SECTION ON A-A'



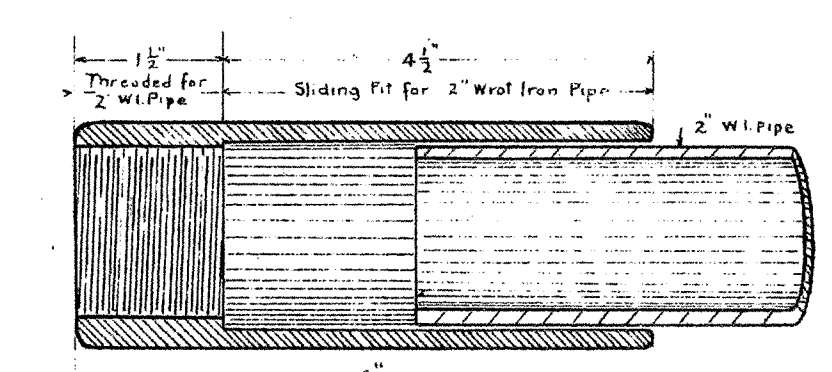
4+60 HALF SECTION EACH STA. 4+70



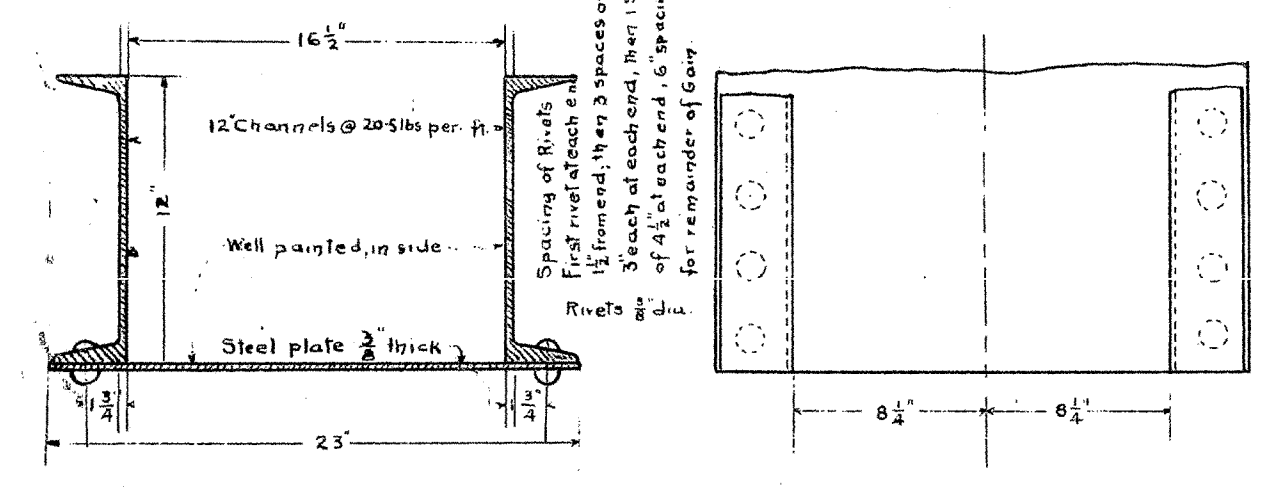
SECTION ON E-E'



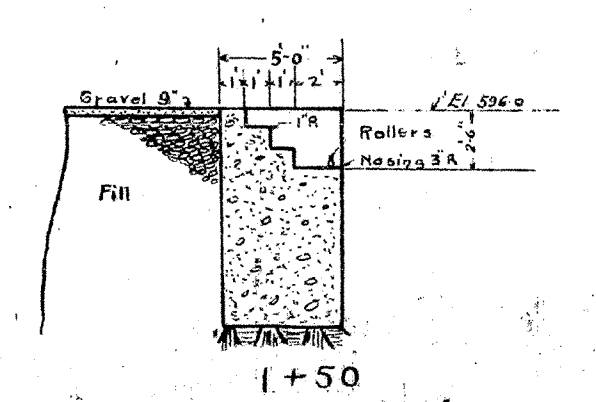
SECTION ON K-K'



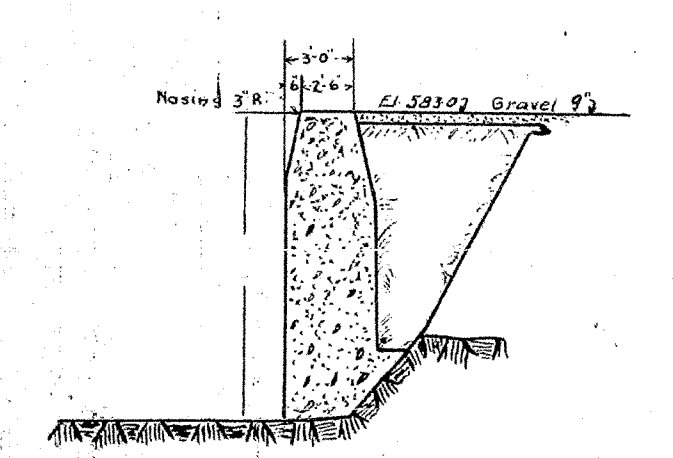
EXPANSION SLEEVE FOR PIPE RAIL



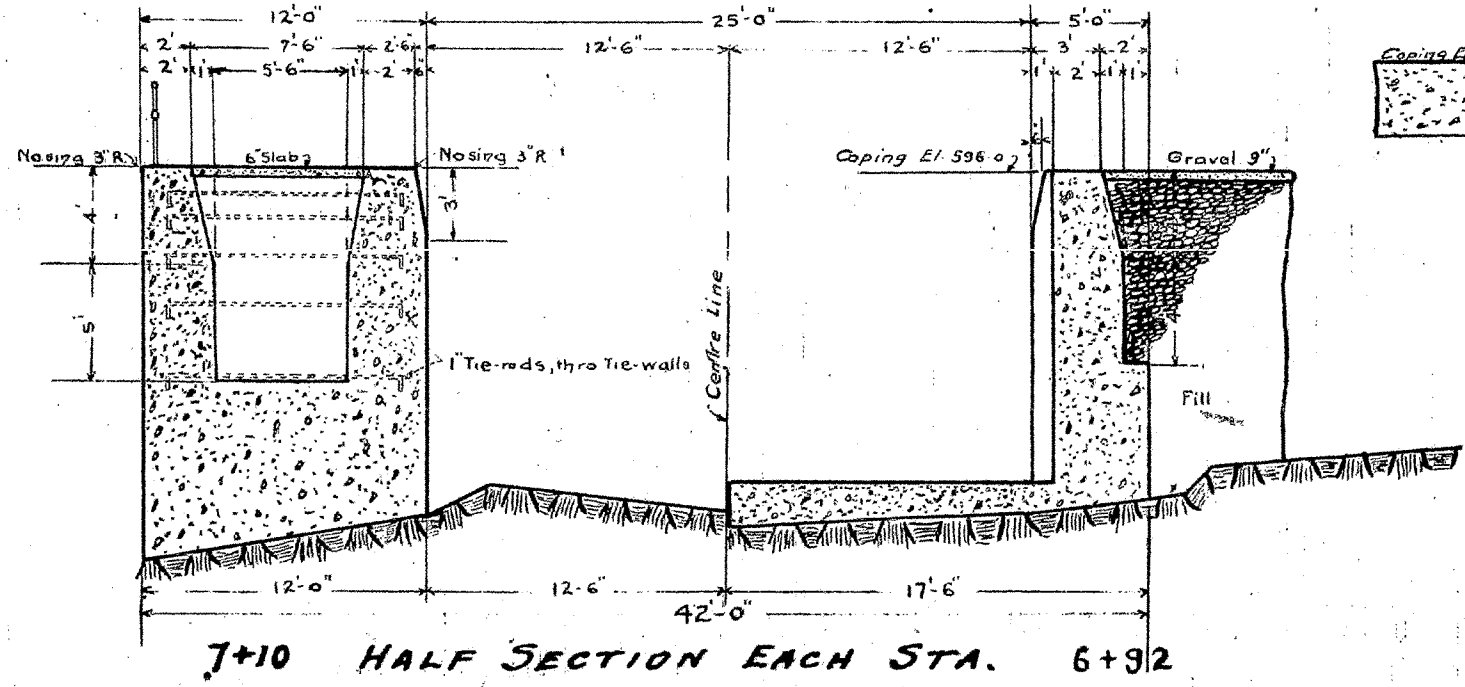
CROSS SECTION
STEEL STOP-LOG GAIN



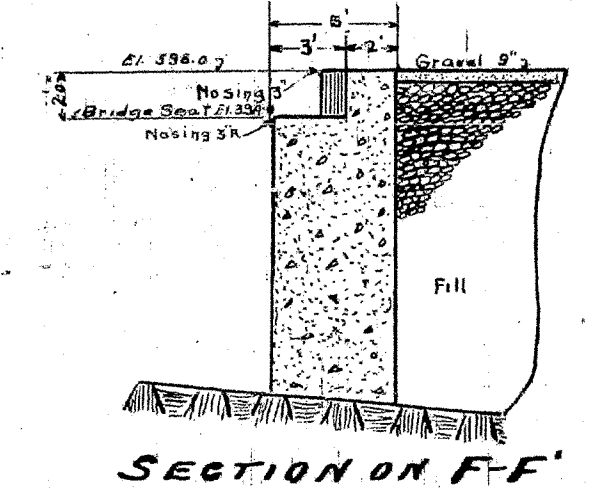
SECTION ON L-L'



SEC. STA. 4+20



7+10 HALF SECTION EACH STA. 6+32



SECTION ON F-F'

**TRENT CANAL
SEVERN DIVISION
PORT-SEVERN LOCK**

AS BUILT
SCALE: 1"=16' & 1"=8'

Division Engineer's Office,
Orillia, Ont. 18 Feb 1918.
J. A. KAPLAN
Division Engineer

COTSPS 83/R69(3)