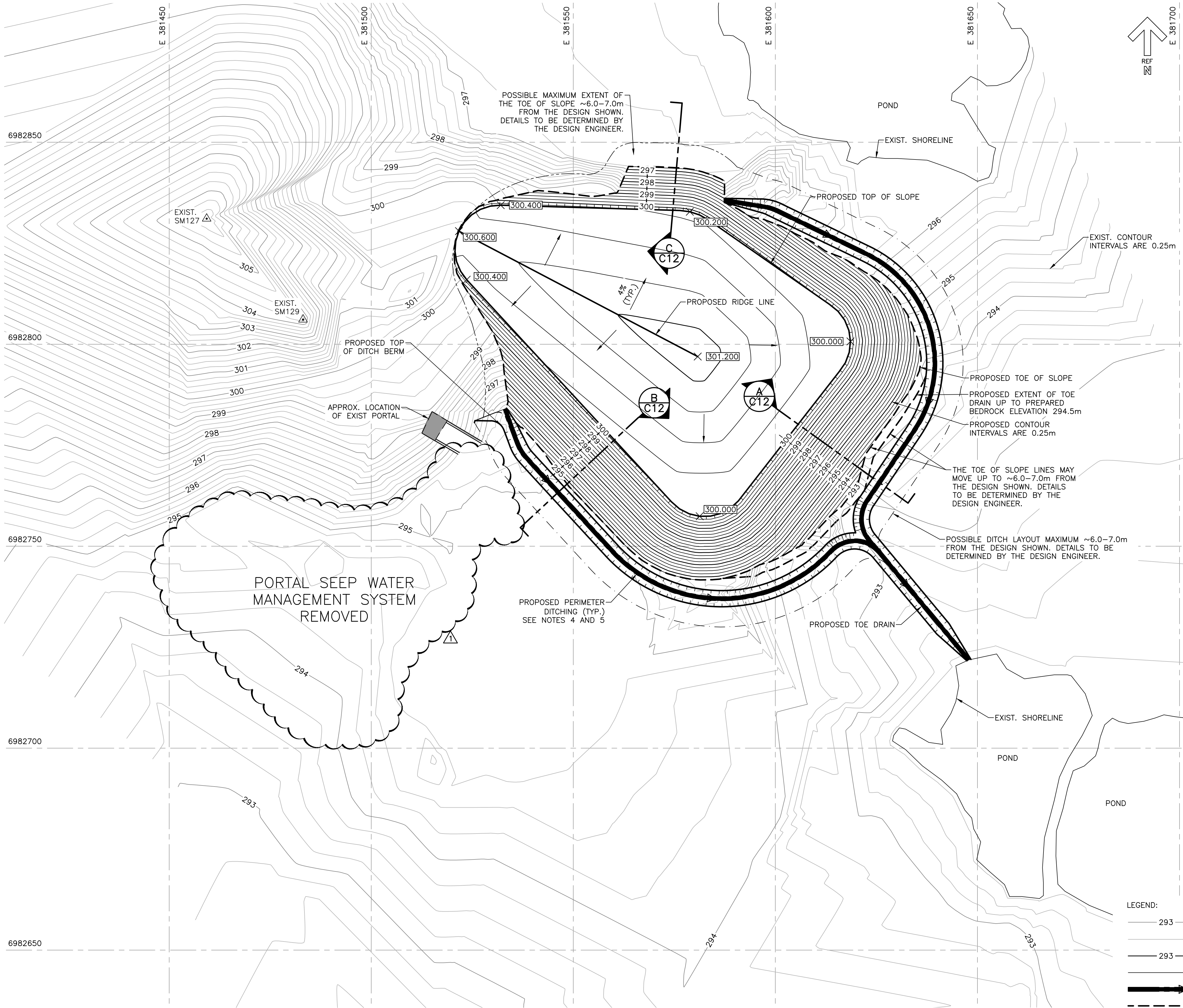


C:\1213-101\work_group\1214\active\121413xxx\121413573 Gordon Lake Assessment\civil\drawing\02 Kidney Pond\121413573-C-KID-10-POST-CONSTRUCTION.dwg

PWOSC A1 (2004)



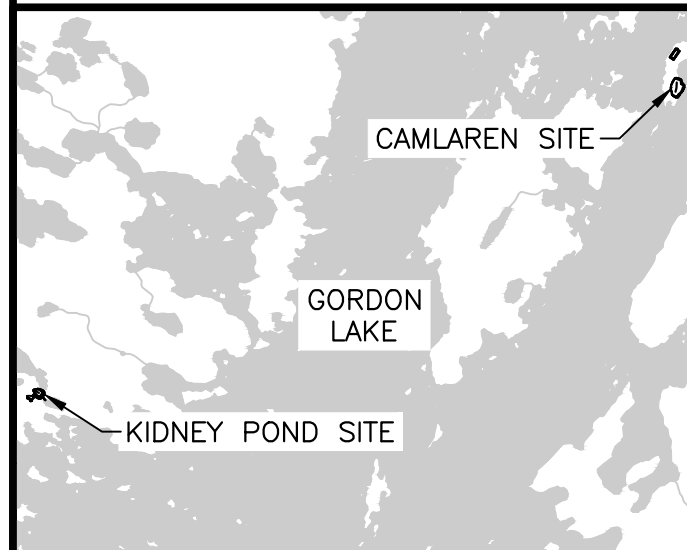
KIDNEY POND PLAN VIEW - POST CONSTRUCTION

SCALE: 1:500
0m 10m 20m 30m 40m 50m

LEGEND:	
— 293 —	EXIST. MAJOR CONTOUR
— — —	EXIST. MINOR CONTOUR
— 293 —	PROP. MAJOR CONTOUR
— — —	PROP. MINOR CONTOUR
— — —	PROP. DITCH BOTTOM
— — —	PROP. TOE DRAIN
— — —	POSSIBLE MAXIMUM DITCH LINE
— — —	POSSIBLE MAXIMUM TOE LINE
# Δ	EXIST. SURVEY MONUMENT

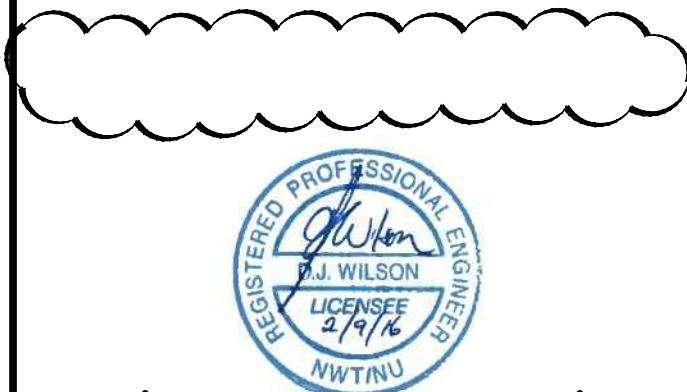
Public Works and Government Services Canada
Travaux Publics et Services gouvernementaux Canada

KEY PLAN



NOTES:

- TOPOGRAPHY SHOWN IS A COMBINATION OF THE LAND SURVEY BY STANTEC COMPLETED IN AUGUST 2015 AND ASSUMED TOPOGRAPHY BEYOND SURVEY BOUNDARY.
- THE LAYOUT OF PROPOSED STRUCTURES IS APPROXIMATE AND CAN BE ADJUSTED DURING CONSTRUCTION BASED ON THE ACTUAL FIELD CONDITIONS.
- SEE DWG C-KID-09 AND C-KID-11 FOR FOUNDATION PREPARATION AREA.
- DITCH GRADES ARE TO BE CONFIRMED ONCE A DETAILED SURVEY OF KIDNEY POND PERIMETER AREA HAS BEEN CARRIED OUT AND THE PERIMETER DITCH ALIGNMENT HAS BEEN PROBED TO EVALUATE THE DEPTH OF SOIL. DITCH GRADES ARE NOT TO EXCEED 10%.
- THE PERIMETER DITCH IS TO BE BREACHED AT TOPOGRAPHIC LOW POINTS TO ALLOW WATER TO FLOW TO THE ENVIRONMENT. DETAILS OF HOW THE PERIMETER DITCH IS TO BE BREACHED IS TO BE FIELD FIT AS PER INSTRUCTIONS GIVEN BY THE DEPARTMENTAL REPRESENTATIVE.



RE-ISSUED FOR TENDER	SEP 02 2016
ISSUED FOR TENDER	JUL 29 2016
revisions	date

PUBLIC WORKS AND GOVERNMENT SERVICES CANADA
GORDON LAKE REMEDIATION PROJECT

KIDNEY POND WASTE ROCK AND SOIL CONTAINMENT AREA POST CONSTRUCTION

designed K. Hojka	conçu
date JAN 04, 2016	
drawn R. Cornish	dessiné
date JAN 04, 2016	
approved D. Wilson	approuvé
date SEP 02, 2016	
Tender M. McElwaine	Soumission
PCA Project Manager	Administrateur de projets PCA
project number	no. du projet
R.057573	
drawing no.	no. du dessin
C-KID-10	

E-DRM/GDD-E: