

PUBLIC ROAD

LOT "A"

PUBLIC ROAD

ROAD

Shop and
Garage
Building

Boat Storage and
Maintenance Shed

Entrance



Electrical
Power

PUBLIC ROAD

Garage

Entrance

Accommodation
Building

Office Building

LOT "B"

* Antenna

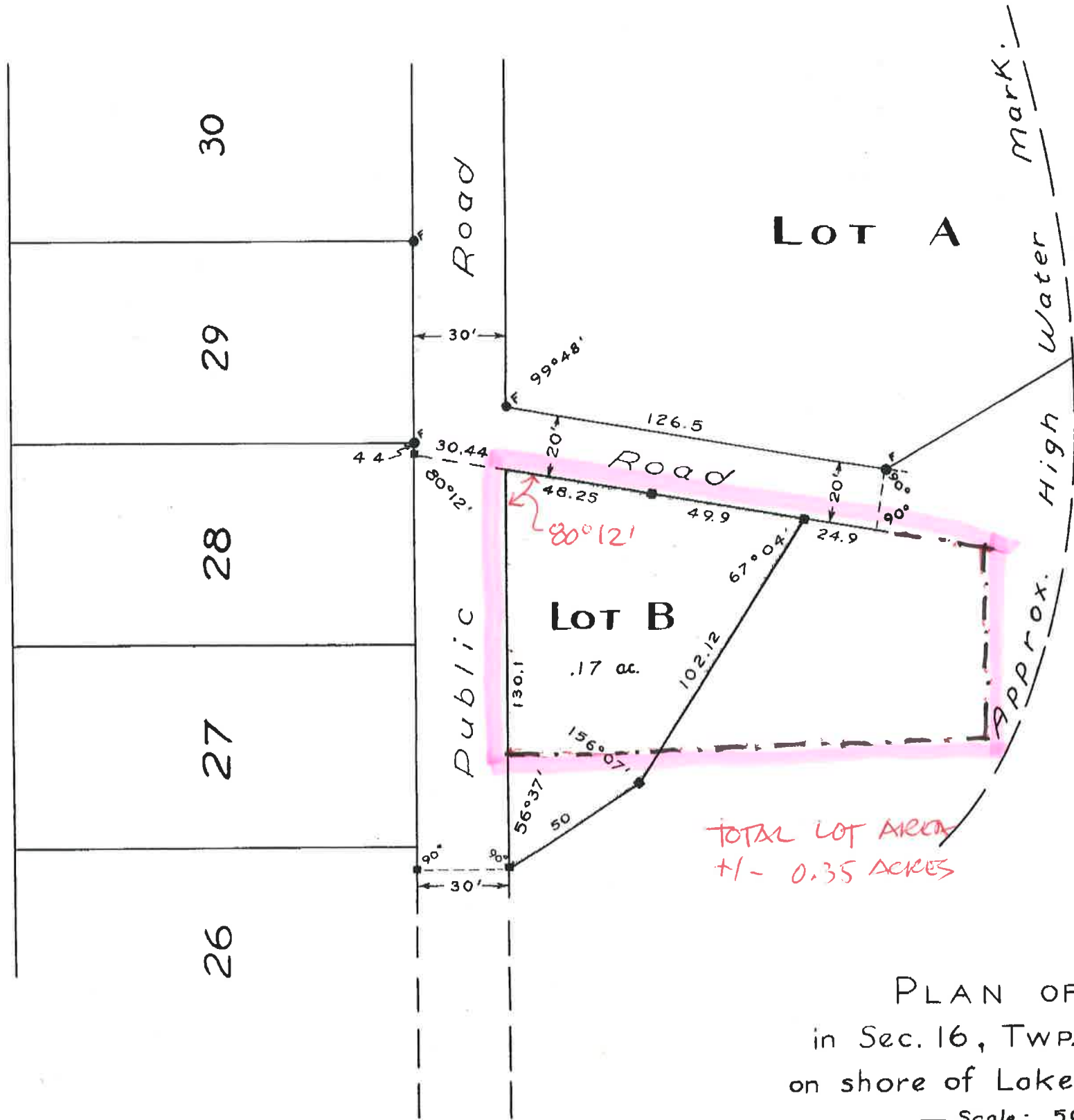
Betel Home

Gimli Yaght Club

[Empty rectangular area]

T

FIRST STREET



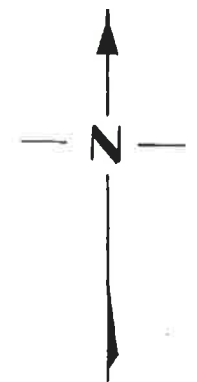
Filed in the Office of the
 Director of Surveys at Winnipeg
 on March 21, 1975 as Plan No. 18009

W. A. Robert
 Director of Surveys

Approved and Confirmed
 March 21, 1975

W. A. Robert
 Director of Surveys
 LAKE

WINNIPEG



PLAN OF LOT B
 in Sec. 16, TWP. 19 RGE. 4, E.P.M.
 on shore of Lake Winnipeg, at Gimli

Scale: 50ft. = 1inch.

Note:-
 Portion of land available for lease bordered pink.
 Iron Bars 3/4" sq. by 30" long were placed at points shown thus ... ■
 Other posting found shown thus ... ● F
 Survey made by D.N. Sharpe, M.L.S. July 4th 1946.

D.N.S.