

| LEGEND—GENERAL |   |
|----------------|---|
| SYMBOL         | DESCRIPTION                                   |
|                | EXISTING ITEMS TO REMAIN                      |
|                | NEW ITEMS TO BE PROVIDED AND INSTALLED        |
| (E)            | DENOTES EXISTING ITEM INDICATED TO REMAIN     |
| (X)            | DENOTES EXISTING ITEM INDICATED TO BE REMOVED |
|                | SECTION A ON DRAWING M1                       |
|                | DETAIL 1 ON DRAWING M1                        |
| CTE            | DENOTES CONNECT TO EXISTING                   |
| CAP            | DENOTES CAPPED CONNECTION                     |

| LEGEND—FIRE PROTECTION |                                 |
|------------------------|---------------------------------|
| SYMBOL                 | DESCRIPTION                     |
|                        | SPRINKLER LINE (WET)            |
|                        | FIRE DEPARTMENT CONNECTION PIPE |
|                        | PENDANT SPRINKLER HEAD          |
|                        | UPRIGHT SPRINKLER HEAD          |
|                        | PIPE—MOUNT FLOW SWITCH          |
|                        | SUPERVISED SHUT—OFF VALVE       |
|                        | FIRE HOSE CABINET               |
|                        | HOSE REEL                       |
|                        | FIRE DEPARTMENT CONNECTION      |

| LEGEND—CONTROLS |   |
|-----------------|---|
| SYMBOL          | DESCRIPTION                                 |
|                 | TEMPERATURE SENSOR                          |
|                 | THERMOSTAT                                  |
|                 | CONTROL WIRING                              |
|                 | 2 WAY ELECTRONIC CONTROL VALVE (2 POSITION) |
|                 | 2 WAY ELECTRONIC CONTROL VALVE (MODULATING) |
|                 | 3 WAY ELECTRONIC CONTROL VALVE (2 POSITION) |
|                 | 3 WAY ELECTRONIC CONTROL VALVE (MODULATING) |

| LEGEND—PLUMBING |                                      |
|-----------------|--------------------------------------|
| SYMBOL          | DESCRIPTION                          |
|                 | SANITARY DRAIN ABOVE GROUND          |
|                 | SANITARY DRAIN BELOW GROUND          |
|                 | VENT                                 |
|                 | DOMESTIC COLD WATER                  |
|                 | DOMESTIC HOT WATER                   |
|                 | DOMESTIC HOT WATER RETURN            |
|                 | DRAIN PIPE WITH CLEANOUT             |
|                 | DRAIN PIPE WITH CLEANOUT UP TO FLOOR |
|                 | DRAINAGE TRAP                        |
|                 | FLOOR DRAIN                          |

| LEGEND—VALVES |  |
|---------------|--|
| SYMBOL        | DESCRIPTION                            |
|               | GATE VALVE                             |
|               | BALL VALVE                             |
|               | BUTTERFLY VALVE                        |
|               | GLOBE VALVE                            |
|               | CHECK VALVE                            |
|               | BALANCING VALVE WITH PRESSURE TAPPINGS |
|               | PRESSURE REDUCING VALVE                |

| LEGEND—PIPING SPECIALTIES |                                    |
|---------------------------|------------------------------------|
| SYMBOL                    | DESCRIPTION                        |
|                           | PIPE DROPS DOWN                    |
|                           | PIPE RISES UP                      |
|                           | BRANCH OFF BOTTOM OF PIPE          |
|                           | BRANCH OFF TOP OF PIPE             |
|                           | CONTINUOUS PIPE                    |
|                           | PIPING PITCH (DN. OR UP: INDICATE) |
|                           | DIRECTION OF FLOW                  |
|                           | CAPPED PIPE                        |
|                           | UNION                              |
|                           | FLANGE CONNECTION                  |
|                           | AUTOMATIC AIR VENT                 |
|                           | PIPE GUIDE                         |
|                           | PIPE ANCHOR                        |
|                           | EXPANSION LOOP                     |
|                           | STRAINER                           |
|                           | THERMOMETER                        |
|                           | PRESSURE GAUGE                     |
|                           | STEAM TRAP                         |

| LEGEND—AIR DISTRIBUTION |   |
|-------------------------|---|
| SYMBOL                  | DESCRIPTION                                 |
|                         | DUCT SIZE, WHERE FIRST DIMENSION IS VISIBLE |
|                         | SUPPLY AIR RECTANGULAR DUCT DOWN            |
|                         | SUPPLY AIR RECTANGULAR DUCT UP              |
|                         | RETURN/EXHAUST AIR RECTANGULAR DUCT DOWN    |
|                         | RETURN/EXHAUST AIR RECTANGULAR DUCT UP      |
|                         | SUPPLY AIR ROUND DUCTWORK DOWN              |
|                         | SUPPLY AIR ROUND DUCTWORK UP                |
|                         | RETURN/EXHAUST AIR ROUND DUCTWORK DOWN      |
|                         | RETURN/EXHAUST AIR ROUND DUCTWORK UP        |

| LEGEND—HEATING AND COOLING |   |
|----------------------------|---|
| SYMBOL                     | DESCRIPTION                               |
|                            | HEATING HOT WATER SUPPLY                  |
|                            | HEATING HOT WATER RETURN                  |
|                            | GLYCOL SUPPLY                             |
|                            | GLYCOL RETURN                             |
|                            | EXPANSION LINE                            |
|                            | STEAM LINE                                |
|                            | STEAM CONDENSATE LINE                     |
|                            | HIGH PRESSURE STEAM                       |
|                            | HIGH PRESSURE CONDENSATE                  |
|                            | LOW PRESSURE STEAM                        |
|                            | LOW PRESSURE CONDENSATE                   |
|                            | HUMIDIFICATION STEAM LINE, (LOW PRESSURE) |

| ABBREVIATIONS |                       |
|---------------|-----------------------|
| ABBREVIATION  | DESCRIPTION           |
| CTE           | CONNECT TO EXISTING   |
| CUH           | CABINET UNIT HEATER   |
| EF            | EXHAUST FAN           |
| EG            | EXHAUST GRILLE        |
| LAV           | LAVATORY              |
| RF            | RETURN FAN            |
| SF            | SUPPLY FAN            |
| SH            | SHOWER                |
| WC            | WATER CLOSET          |
| WHA           | WATER HAMMER ARRESTOR |



**Public Works and  
Government Services Canada**  
Architectural and Engineering Services  
Ontario Region  
**Travaux publics et  
Services gouvernementaux Canada**  
Services d'architecture et de génie  
Région de l'Ontario

Architect/Structural Consultants:



**CLELAND  
JARDINE**  
ENGINEERING LTD.  
PROFESSIONAL ENGINEER  
REGISTERED FOR THE  
PROVINCE OF ONTARIO  
(613) 591-1533

CJE # 15-1234A

Mechanical & Electrical Consultants:

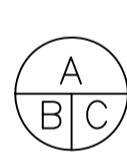


**Jp2g Consultants Inc.**  
ENGINEERS • PLANNERS • PROJECT MANAGERS  
12 INTERNATIONAL DRIVE, FERRISBURGE, ON  
Phone: (813) 628-2601 Fax: (813) 628-2603  
1150 MORRISON DRIVE, SUITE 410, OTTAWA, ON  
Phone: (813) 628-7800 Fax: (813) 628-2600



|          |                       |           |
|----------|-----------------------|-----------|
| 04       | RE—ISSUED FOR TENDER  | AUG 15/16 |
| 03       | ISSUED FOR TENDER     | JUL 7/16  |
| 02       | ISSUED FOR 99% REVIEW | MAR 7/16  |
| 01       | ISSUED FOR 50% REVIEW | FEB 1/16  |
| revision |                       | date      |

Do not scale drawings.  
Verify all dimensions and conditions on site and  
immediately notify the departmental representative  
of all discrepancies.



A Detail No.  
No. du détail

B drawing no. — where detail required  
dessin no. — où détail exigé

C drawing no. — where detailed  
dessin no. — où détaillé

project title  
titre du projet  

Kingston, Ontario

COLLINS BAY INSTITUTION  
CORRECTIONAL SERVICE CANADA  
1455 BATH ROAD

CBI BLD'G B1: INTERIOR DEMOLITION

drawing title  
titre du dessin  

MECHANICAL  
LEGENDS,  
ABBREVIATIONS  
AND DRAWING LIST

drawn by  
dessiné par  

T.A.

designed by  
conc par  

A.M

approved by  
approuvé par  

M.M.

tender  
soumission  

JACK TO

project manager  
administrateur de projets

project date  
date du projet  

2016/02/19

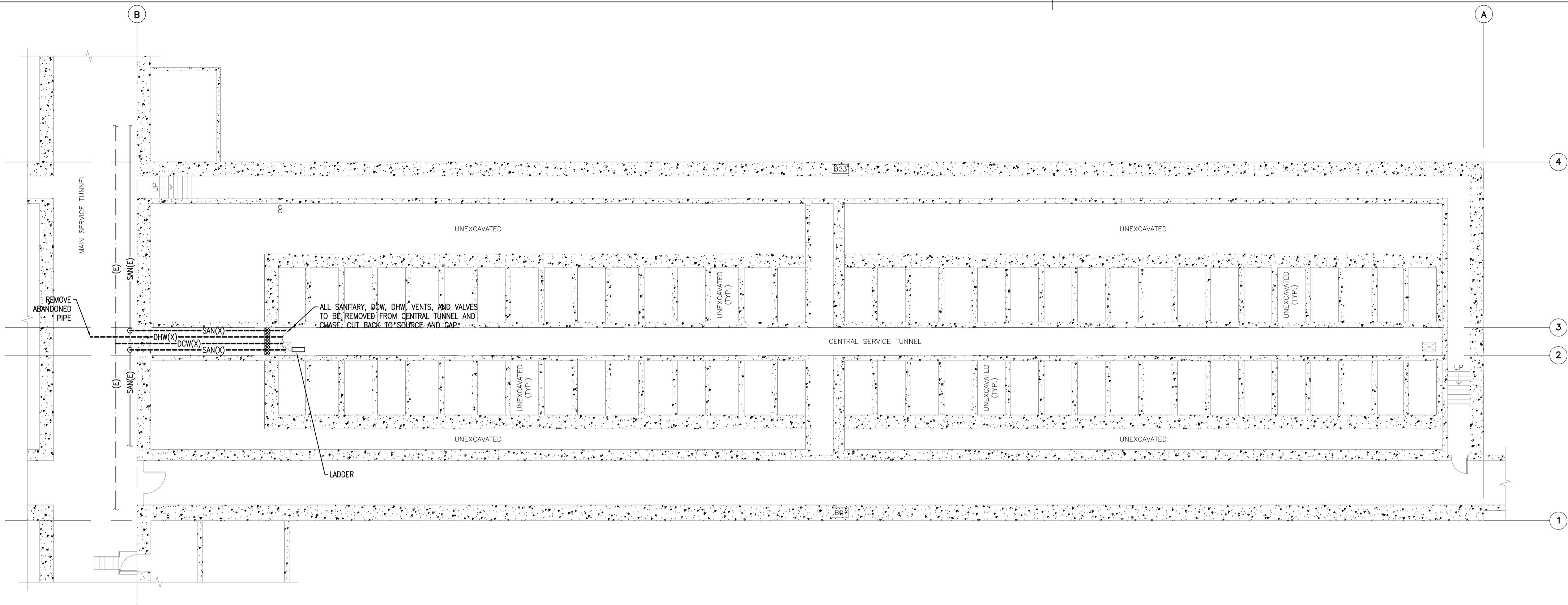
project no.  
no. du projet  

R.051672.001

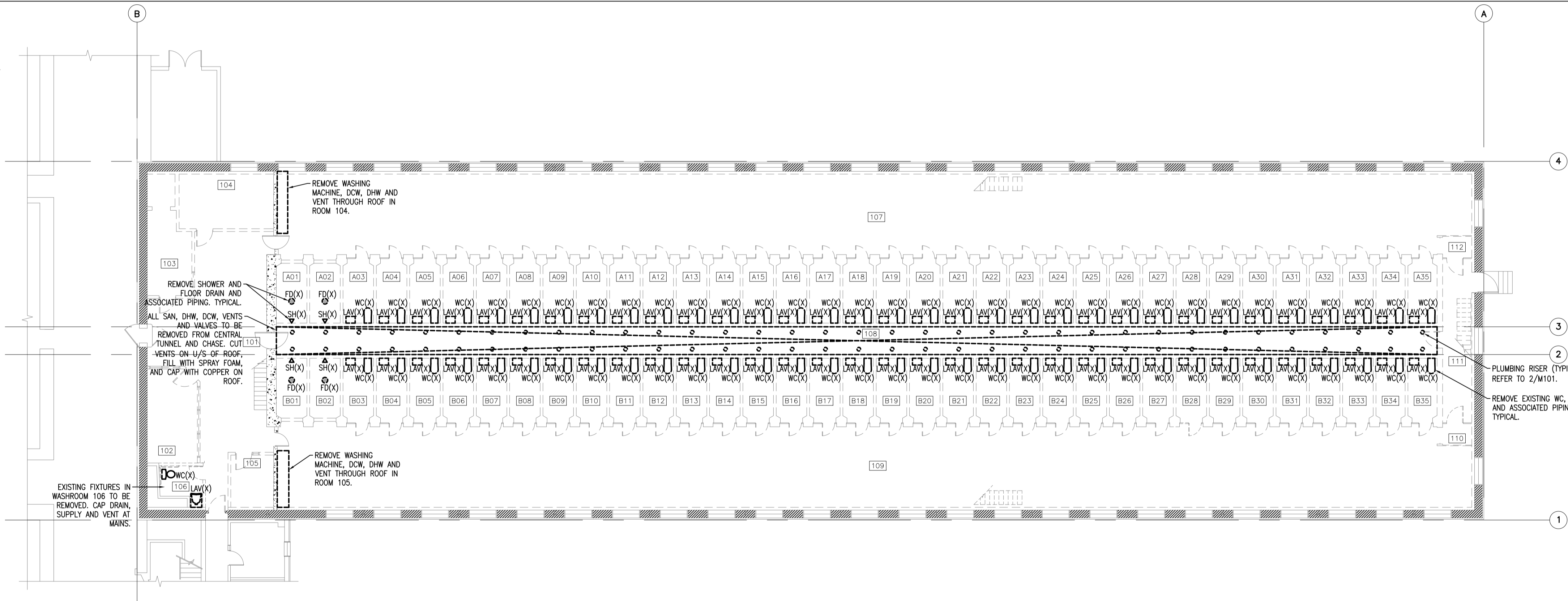
drawing no.  
dessiné no.  

M000

| DRAWING LIST |  |
|--------------|--|
| M000         | MECHANICAL LEGENDS, ABBREVIATIONS AND DRAWING LIST                                   |
| M100         | FOUNDATION AND GROUND FLOOR PLANS – PLUMBING LAYOUT – DEMOLITION                     |
| M101         | SECOND FLOOR PLAN – PLUMBING LAYOUT AND SCHEMATIC – DEMOLITION                       |
| M200         | FOUNDATION AND GROUND FLOOR PLANS – FIRE PROTECTION LAYOUT – DEMOLITION AND NEW WORK |
| M201         | FOUNDATION AND GROUND FLOOR PLANS – FIRE PROTECTION LAYOUT– DEMOLITION AND NEW WORK  |
| M300         | FOUNDATION AND GROUND FLOOR PLANS – HVAC – DEMOLITION AND NEW WORK                   |
| M301         | SECOND AND ATTIC FLOOR PLANS – HVAC LAYOUT – DEMOLITION AND NEW WORK                 |



1 FOUNDATION FLOOR PLAN - PLUMBING LAYOUT - DEMOLITION  
SCALE 1:150



2 GROUND FLOOR PLAN - PLUMBING LAYOUT - DEMOLITION  
SCALE 1:150

GENERAL NOTE  
REMOVE ALL ASSOCIATED HANGERS,  
BRACKETS, SUPPORT WITH REMOVED  
EQUIPMENT AND SERVICES

**Public Works and  
Government Services Canada**  
Architectural and Engineering Services  
Ontario Region  
**Travaux publics et  
Services gouvernementaux Canada**  
Services d'architecture et de génie  
Région de l'Ontario

Architect/Structural Consultants:  
**CLELAND  
JARDINE**  
ENGINEERING LTD.  
CJE # 15-1234A

Mechanical & Electrical Consultants:  
**Jp2g Consultants Inc.**  
ENGINEERS • PLANNERS • PROJECT MANAGERS  
12 INTERNATIONAL DRIVE, FERRISBURGH, ON  
Phone: (905) 709-0001 Fax: (905) 709-0003  
1150 MORRISON DRIVE, SUITE 410, OTTAWA, ON  
Phone: (613) 628-7800 Fax: (613) 628-2800



|          |                       |           |
|----------|-----------------------|-----------|
| 04       | RE-ISSUED FOR TENDER  | AUG 15/16 |
| 03       | ISSUED FOR TENDER     | JUL 7/16  |
| 02       | ISSUED FOR 99% REVIEW | MAR 7/16  |
| 01       | ISSUED FOR 50% REVIEW | FEB 1/16  |
| revision |                       | date      |

Do not scale drawings.  
Verify all dimensions and conditions on site and  
immediately notify the departmental representative  
of all discrepancies.

|   |                                     |
|---|-------------------------------------|
| A | Detail No.                          |
| B | drawing no. - where detail required |
| C | drawing no. - where detailed        |

project title  
titre du projet  
Kingston, Ontario  
COLLINS BAY INSTITUTION  
CORRECTIONAL SERVICE CANADA  
1455 BATH ROAD  
CBI BLD'G B1: INTERIOR DEMOLITION

drawing title  
titre du dessin  
FOUNDATION AND GROUND  
FLOOR PLANS  
PLUMBING LAYOUT  
DEMOLITION

drawn by  
dessine par  
T.A.

designed by  
conc par  
A.M.

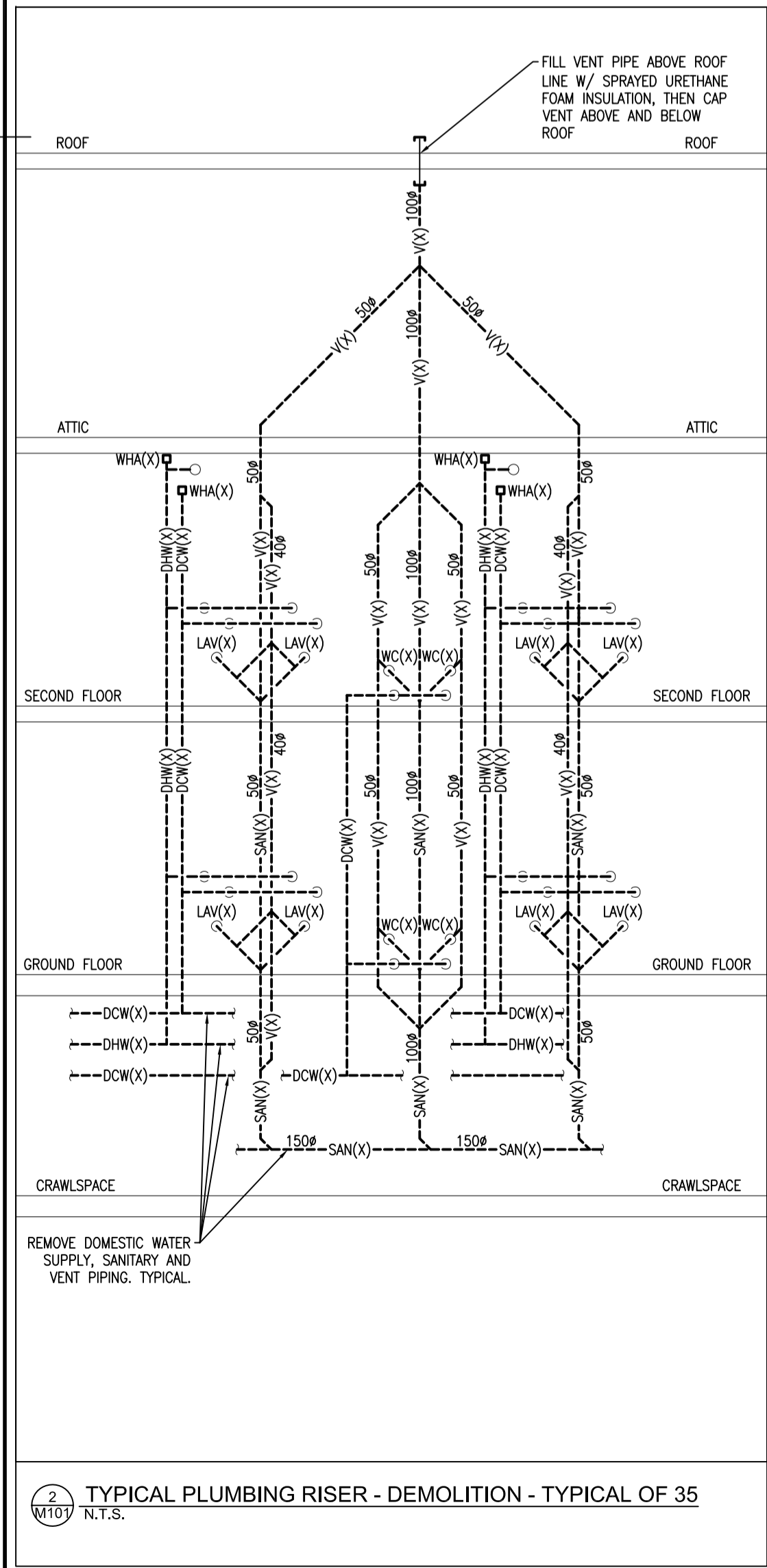
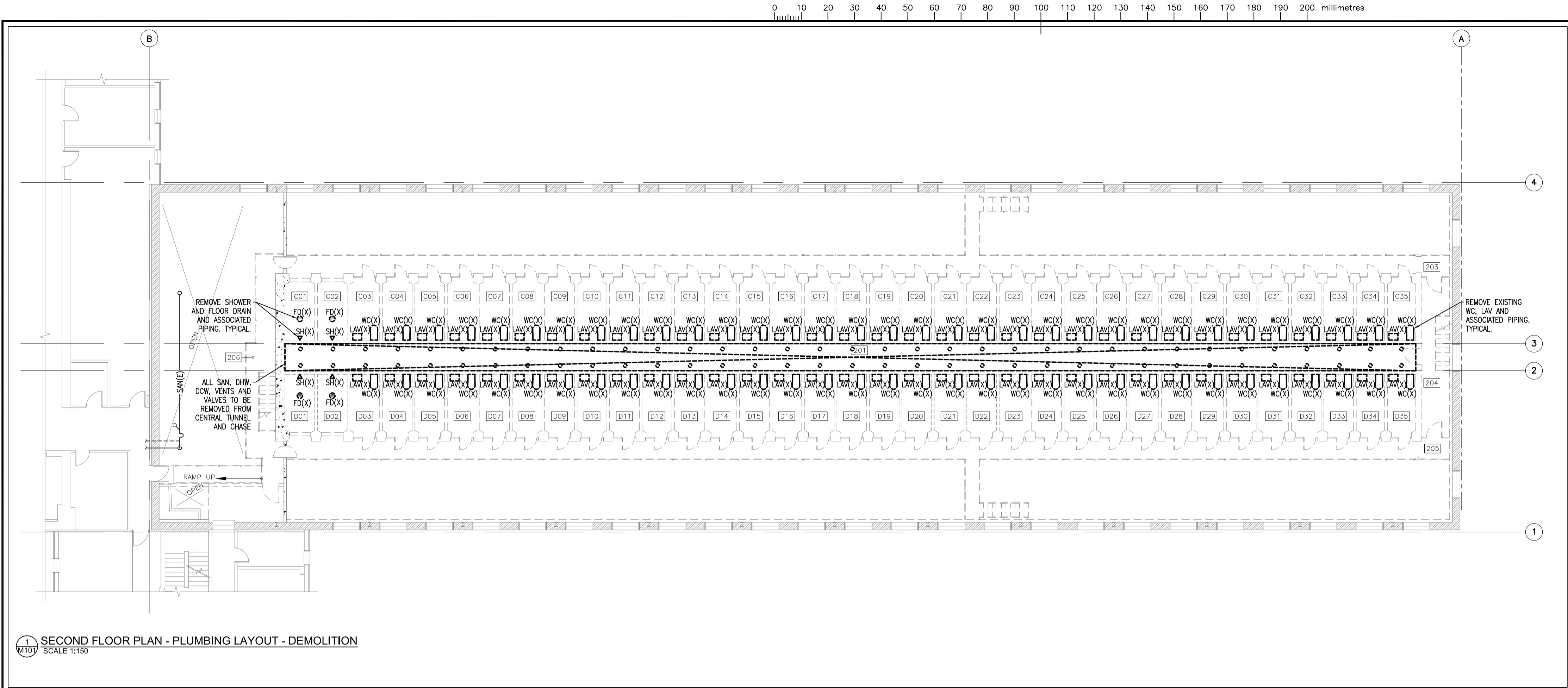
approved by  
approuve par  
M.M.

tender  
soumission  
project manager  
administrateur  
de projets  
JACK TO

project date  
date du projet  
2016/02/19

project no.  
no. du projet  
R.051672.001

drawing no.  
dessine no.  
M100



**Public Works and  
Government Services Canada**  
Architectural and Engineering Services  
Ontario Region

**Travaux publics et  
Services gouvernementaux Canada**  
Services d'architecture et de génie  
Région de l'Ontario

Architect/Structural Consultants:

**CLELAND  
JARDINE**  
ENGINEERING LTD.

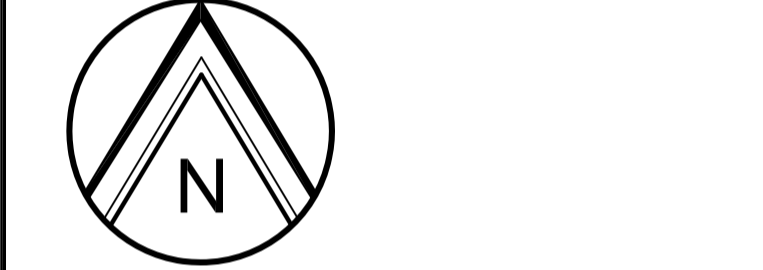
200 SANDY CREEK RD.  
KAWATA, ON L0L 4B9  
(613) 591-1533

CJE # 15-1234A

Mechanical & Electrical Consultants:

**Jp2g Consultants Inc.**  
ENGINEERS • PLANNERS • PROJECT MANAGERS

12 INTERNATIONAL DRIVE, FERRISBURG, ON  
Phone: (813) 325-2051 Fax: (813) 325-4513  
1150 MORRISON DRIVE, SUITE 410, OTTAWA, ON  
Phone: (813) 628-7800 Fax: (813) 628-2800



|          |                       |           |
|----------|-----------------------|-----------|
| 04       | RE-ISSUED FOR TENDER  | AUG 15/16 |
| 03       | ISSUED FOR TENDER     | JUL 7/16  |
| 02       | ISSUED FOR 99% REVIEW | MAR 7/16  |
| 01       | ISSUED FOR 50% REVIEW | FEB 1/16  |
| revision |                       | date      |

Do not scale drawings.  
Verify all dimensions and conditions on site and  
immediately notify the departmental representative  
of all discrepancies.

|   |   |
|---|---|
| A | Detail No.  |
| B | No. du détail   |
| C | drawing no. - where detail required<br>dessin no. - où détail exigé |
| C | drawing no. - where detailed<br>dessin no. - où détaillé            |

project title  
titre du projet

Kingston, Ontario

COLLINS BAY INSTITUTION  
CORRECTIONAL SERVICE CANADA  
1455 BATH ROAD

CBI BLD'G B1: INTERIOR DEMOLITION

drawing title  
titre du dessin

**SECOND FLOOR PLAN  
PLUMBING LAYOUT  
AND SCHEMATIC  
DEMOLITION**

drawn by  
dessiné par

T.A.

designed by  
conc par

A.M.

approved by  
approuvé par

M.M.

tender  
soumission

JACK TO

project manager  
administrateur  
de projets

project date  
date du projet

2016/02/19

project no.  
no. du projet

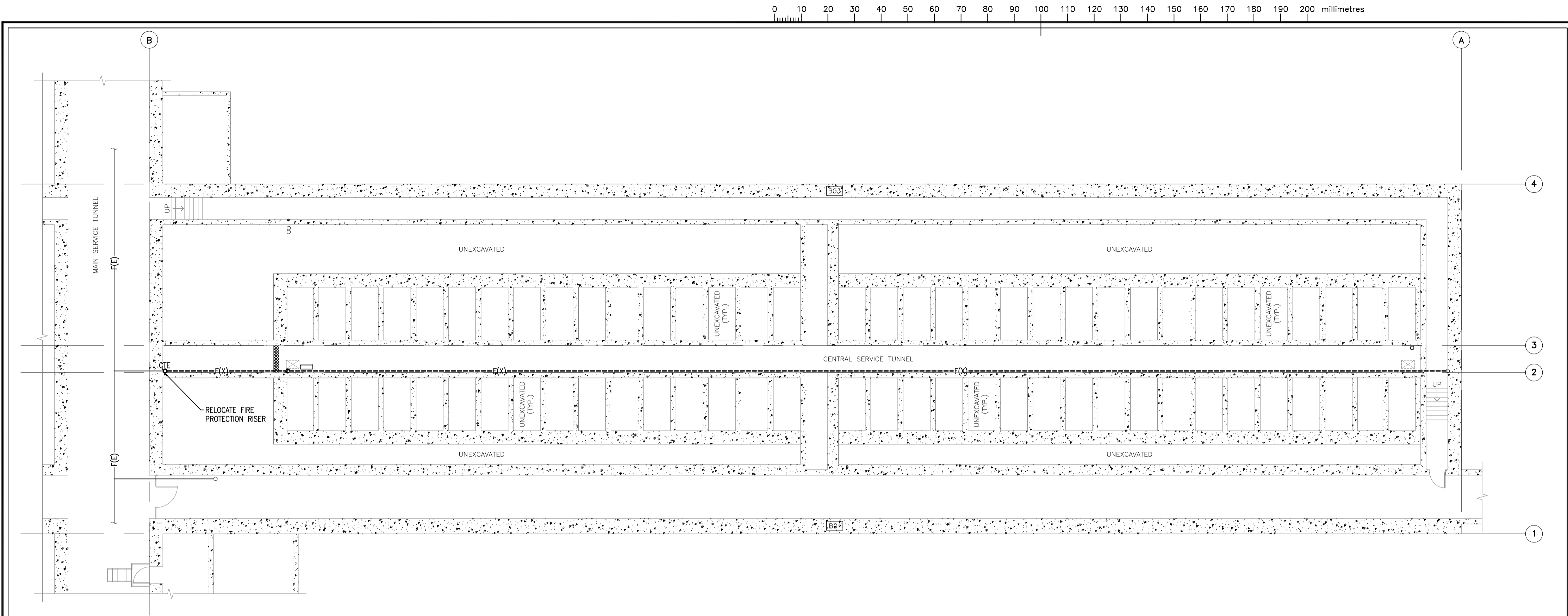
R.051672.001

drawing no.  
dessiné no.

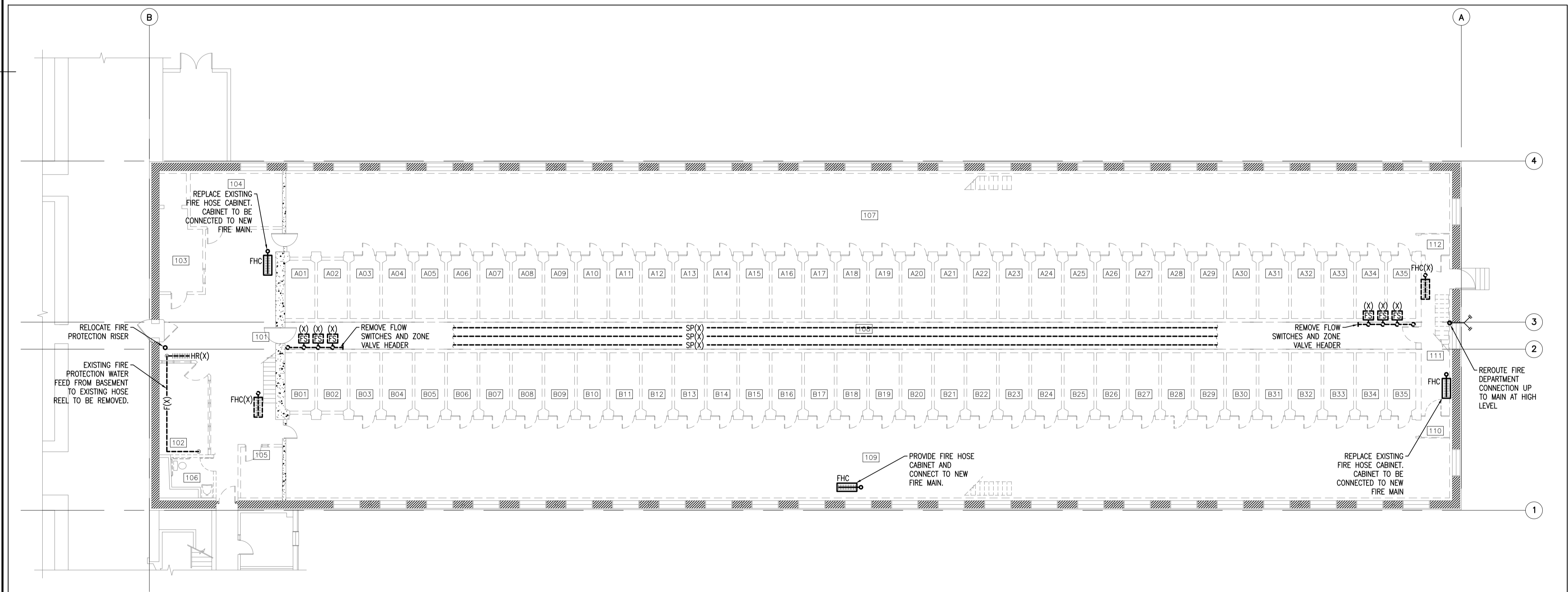
**M101**

GENERAL NOTE

REMOVE ALL ASSOCIATED HANGERS  
BRACKETS, SUPPORT WITH REMOVED  
EQUIPMENT AND SERVICES



1 FOUNDATION FLOOR PLAN - FIRE PROTECTION LAYOUT - DEMOLITION AND NEW WORK  
SCALE 1:150



2 GROUND FLOOR PLAN - FIRE PROTECTION LAYOUT - DEMOLITION AND NEW WORK  
SCALE 1:150

GENERAL NOTE  
REMOVE ALL ASSOCIATED HANGERS  
BRACKETS, SUPPORT WITH REMOVED  
EQUIPMENT AND SERVICES

**Public Works and  
Government Services Canada**  
Architectural and Engineering Services  
Ontario Region  
**Travaux publics et  
Services gouvernementaux Canada**  
Services d'architecture et de génie  
Région de l'Ontario

Architect/Structural Consultants:  
**CLEAND  
JARDINE**  
ENGINEERING LTD.  
CJE # 15-1234A

Mechanical & Electrical Consultants:  
**Jp2g Consultants Inc.**  
ENGINEERS • PLANNERS • PROJECT MANAGERS  
12 INTERNATIONAL DRIVE, FERRISBURG, ON  
Phone: (813) 628-7800, Fax: (813) 628-7800  
1150 MORRISON DRIVE, SUITE 410, OTTAWA, ON  
Phone: (813) 628-7800, Fax: (813) 628-2800



|          |                       |           |
|----------|-----------------------|-----------|
| 04       | RE-ISSUED FOR TENDER  | AUG 15/16 |
| 03       | ISSUED FOR TENDER     | JUL 7/16  |
| 02       | ISSUED FOR 99% REVIEW | MAR 7/16  |
| 01       | ISSUED FOR 50% REVIEW | FEB 1/16  |
| revision |                       | date      |

Do not scale drawings.  
Verify all dimensions and conditions on site and  
immediately notify the departmental representative  
of all discrepancies.

|   |                                     |
|---|-------------------------------------|
| A | Detail No.                          |
| B | drawing no. - where detail required |
| C | drawing no. - where detailed        |

project title  
titre du projet  
Kingston, Ontario  
COLLINS BAY INSTITUTION  
CORRECTIONAL SERVICE CANADA  
1455 BATH ROAD  
CBI BLD'G B1: INTERIOR DEMOLITION

drawing title  
titre du dessin  
FOUNDATION AND GROUND  
FLOOR PLANS  
FIRE PROTECTION LAYOUT  
DEMOLITION AND NEW WORK

drawn by  
dessine par  
T.A.

designed by  
conc par  
A.M.

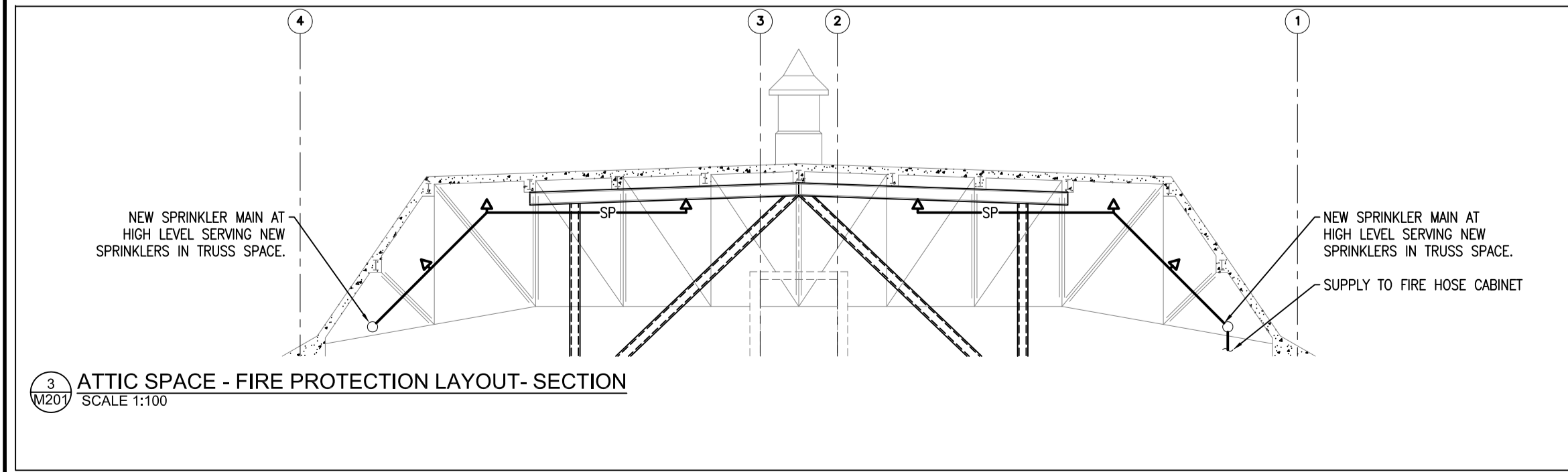
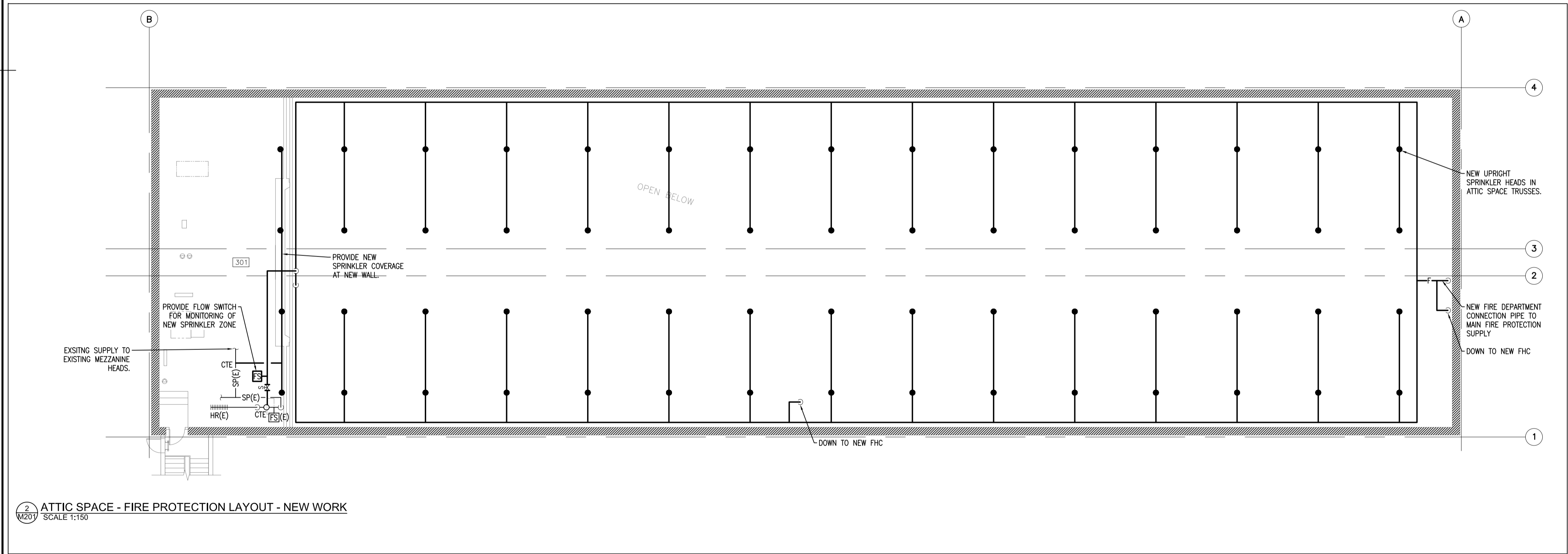
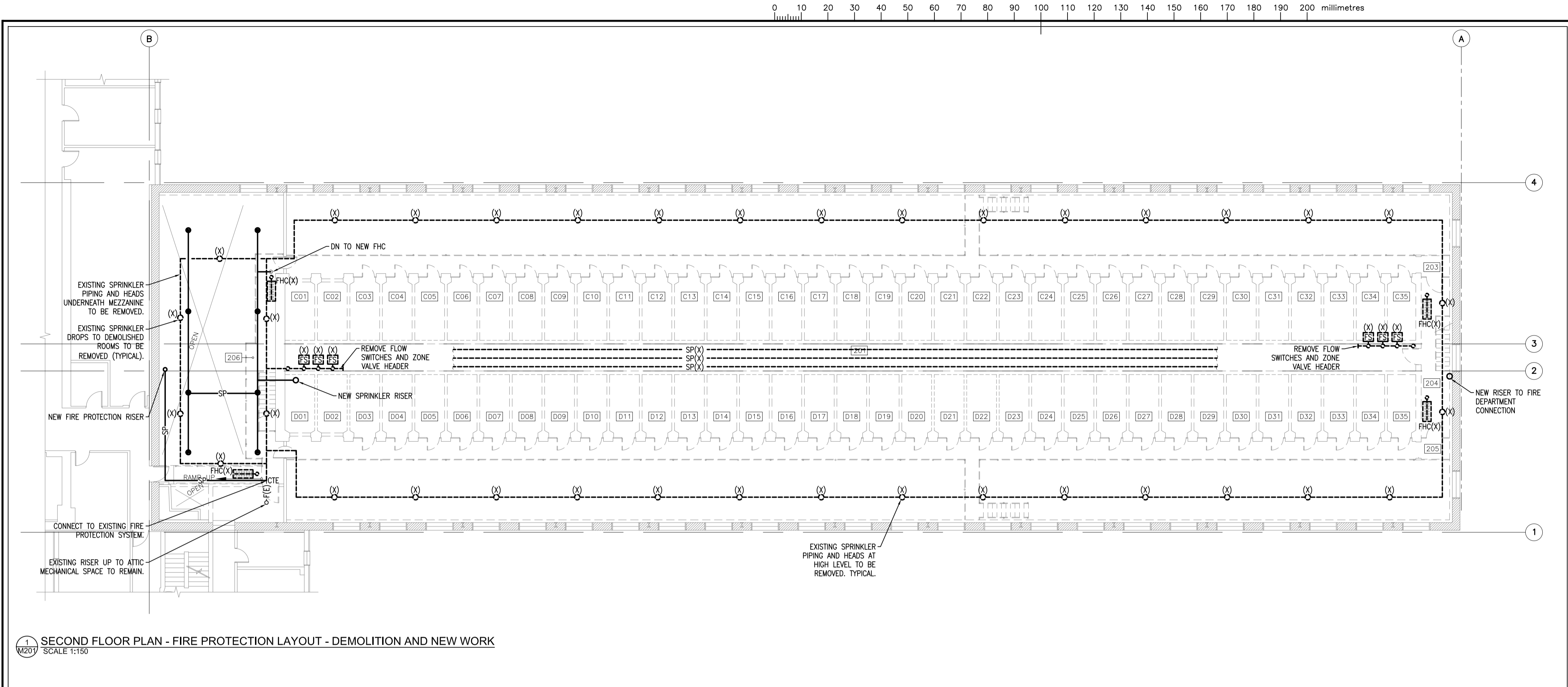
approved by  
approuvé par  
M.M.

tender  
soumission  
project manager  
administrateur de projets  
JACK TO

project date  
date du projet  
2016/02/19

project no.  
no. du projet  
R.051672.001

drawing no.  
dessine no.  
M200



**Public Works and Government Services Canada**  
Architectural and Engineering Services  
Ontario Region

**Travaux publics et Services gouvernementaux Canada**  
Services d'architecture et de génie  
Région de l'Ontario

Architect/Structural Consultants:

**CLELAND JARDINE**  
ENGINEERING LTD.

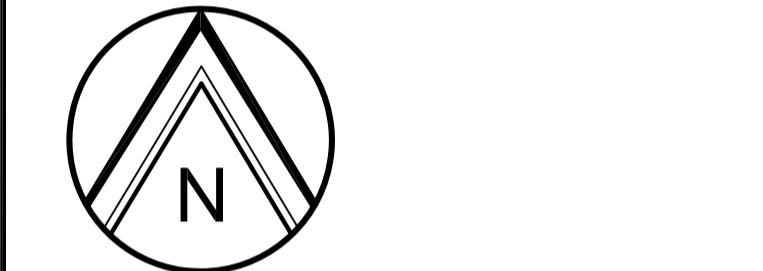
200-1000 KENNEDY ROAD  
KAWATA, ONT. L8P 4B9  
(613) 591-1133

CJE # 15-1234A

Mechanical & Electrical Consultants:

**Jp2g Consultants Inc.**  
ENGINEERS • PLANNERS • PROJECT MANAGERS

12 INTERNATIONAL DRIVE, PEMBROKE, ON  
Phone: (819) 337-0001 Fax: (819) 337-0413  
1150 MORRISON DRIVE, SUITE 410, OTTAWA, ON  
Phone: (613) 628-7800 Fax: (613) 628-2800



|          |                       |           |
|----------|-----------------------|-----------|
| 04       | RE-ISSUED FOR TENDER  | AUG 15/16 |
| 03       | ISSUED FOR TENDER     | JUL 7/16  |
| 02       | ISSUED FOR 99% REVIEW | MAR 7/16  |
| 01       | ISSUED FOR 50% REVIEW | FEB 1/16  |
| revision |                       | date      |

Do not scale drawings.  
Verify all dimensions and conditions on site and immediately notify the departmental representative of all discrepancies.

|   |   |
|---|---|
| A | Detail No.  |
| B | No. du détail   |
| C | drawing no. - where detail required<br>dessin no. - où détail exigé |
| C | drawing no. - where detailed<br>dessin no. - où détaillé            |

project title  
titre du projet

Kingston, Ontario

COLLINS BAY INSTITUTION  
CORRECTIONAL SERVICE CANADA  
1455 BATH ROAD

CBI BLD'G B1: INTERIOR DEMOLITION

drawing title  
titre du dessin

FOUNDATION AND GROUND  
FLOOR PLANS  
FIRE PROTECTION LAYOUT  
DEMOLITION AND NEW WORK

drawn by  
dessiné par

T.A.

designed by  
conçu par

A.M.

approved by  
approuvé par

M.M.

tender  
soumission

JACK TO

project manager  
administrateur de projets

project date  
date du projet

2016/02/19

project no.  
no. du projet

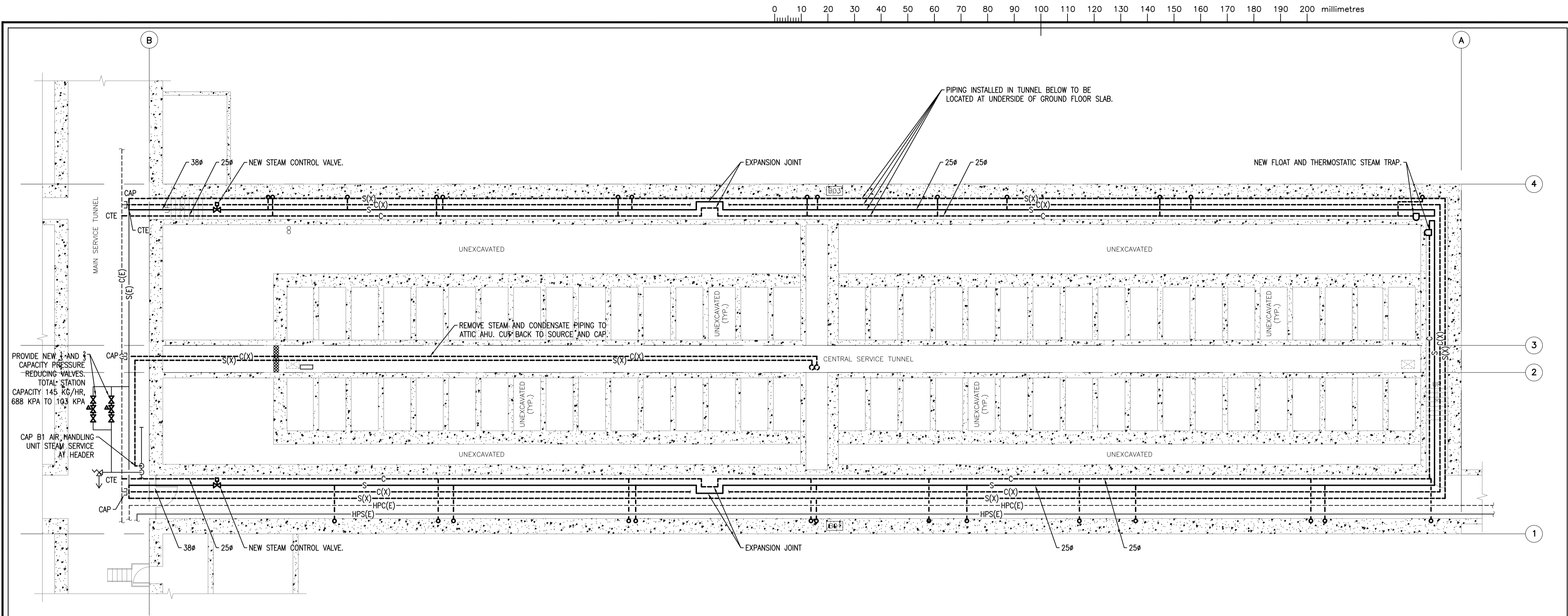
R.051672.001

drawing no.  
dessiné no.

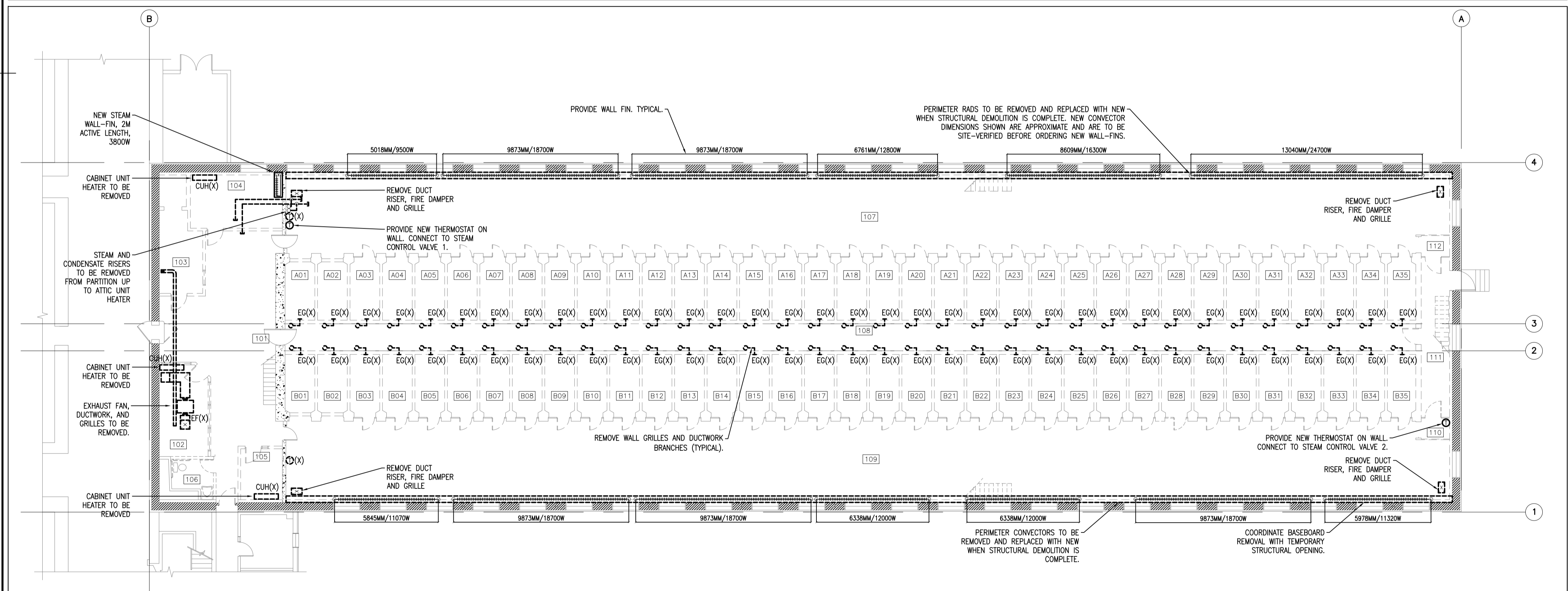
M201

GENERAL NOTE

REMOVE ALL ASSOCIATED HANGERS  
BRACKETS, SUPPORT WITH REMOVED  
EQUIPMENT AND SERVICES



1 FOUNDATION FLOOR PLAN - HVAC LAYOUT - DEMOLITION AND NEW WORK  
SCALE 1:150



2 GROUND FLOOR PLAN - HVAC LAYOUT - DEMOLITION AND NEW WORK  
SCALE 1:150

GENERAL NOTE  
REMOVE ALL ASSOCIATED HANGERS  
BRACKETS, SUPPORT WITH REMOVED  
EQUIPMENT AND SERVICES

**Public Works and  
Government Services Canada**  
Architectural and Engineering Services  
Ontario Region  
**Travaux publics et  
Services gouvernementaux Canada**  
Services d'architecture et de génie  
Région de l'Ontario

Architect/Structural Consultants:  
**CLELAND  
JARDINE**  
ENGINEERING LTD.  
PROFESSIONAL ENGINEER  
KAWATA, ON. C.O.L. 889  
(613) 591-1533  
CJE # 15-1234A

Mechanical & Electrical Consultants:  
**Jp2g Consultants Inc.**  
ENGINEERS • PLANNERS • PROJECT MANAGERS  
12 INTERNATIONAL DRIVE, FERRISBURGH, ON  
Phone: (905) 709-0001 Fax: (905) 709-0453  
1150 MORRISON DRIVE, SUITE 410, OTTAWA, ON  
Phone: (613) 628-7800 Fax: (613) 628-2800



|          |                       |           |
|----------|-----------------------|-----------|
| 04       | RE-ISSUED FOR TENDER  | AUG 15/16 |
| 03       | ISSUED FOR TENDER     | JUL 7/16  |
| 02       | ISSUED FOR 99% REVIEW | MAR 7/16  |
| 01       | ISSUED FOR 50% REVIEW | FEB 1/16  |
| revision |                       | date      |

Do not scale drawings.  
Verify all dimensions and conditions on site and  
immediately notify the departmental representative  
of all discrepancies.

|   |   |
|---|---|
| A | Detail No.<br>No. du détail   |
| B | drawing no. - where detail required<br>dessin no. - où détail exigé |
| C | drawing no. - where detailed<br>dessin no. - où détaillé            |

project title  
titre du projet  
Kingston, Ontario  
COLLINS BAY INSTITUTION  
CORRECTIONAL SERVICE CANADA  
1455 BATH ROAD  
CBI BLD'G B1: INTERIOR DEMOLITION

drawing title  
titre du dessin  
FOUNDATION AND GROUND  
FLOOR PLANS  
HVAC DEMOLITION AND  
NEW WORK

drawn by  
dessiné par  
T.A.

designed by  
conçu par  
A.M.

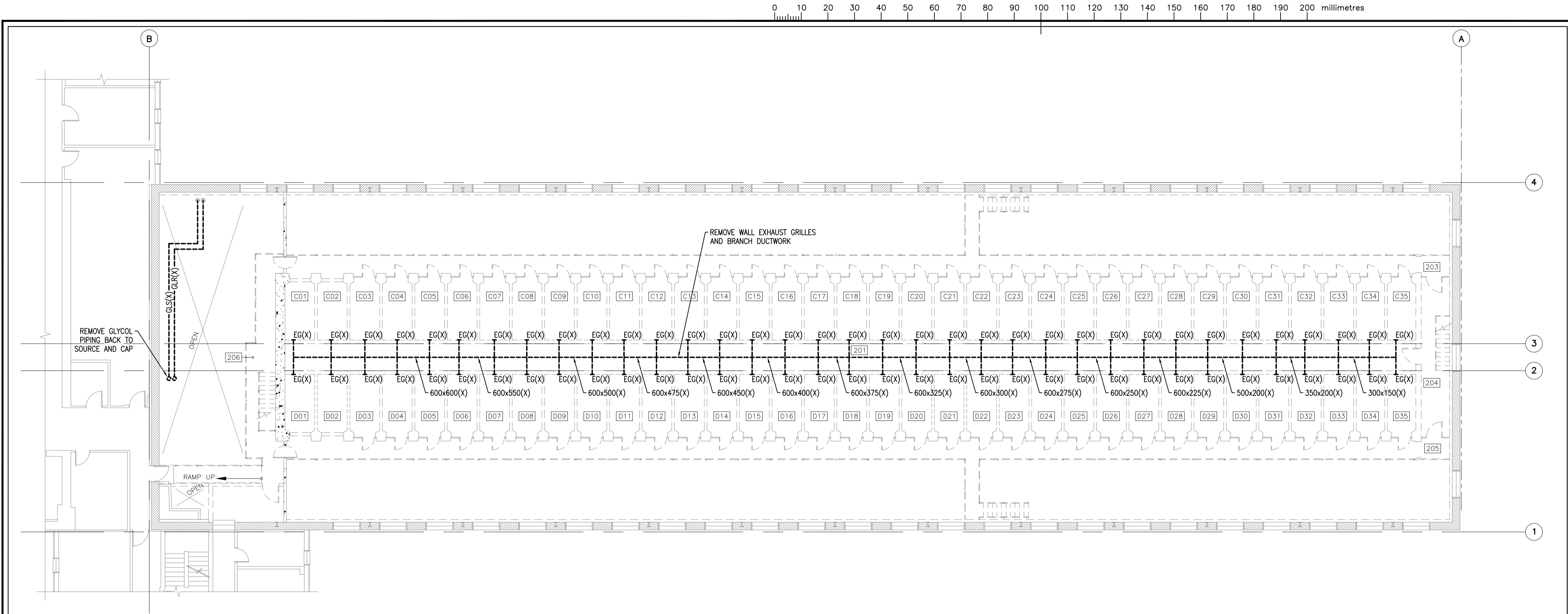
approved by  
approuvé par  
M.M.

tender  
soumission  
JACK TO

project date  
date du projet  
2016/02/19

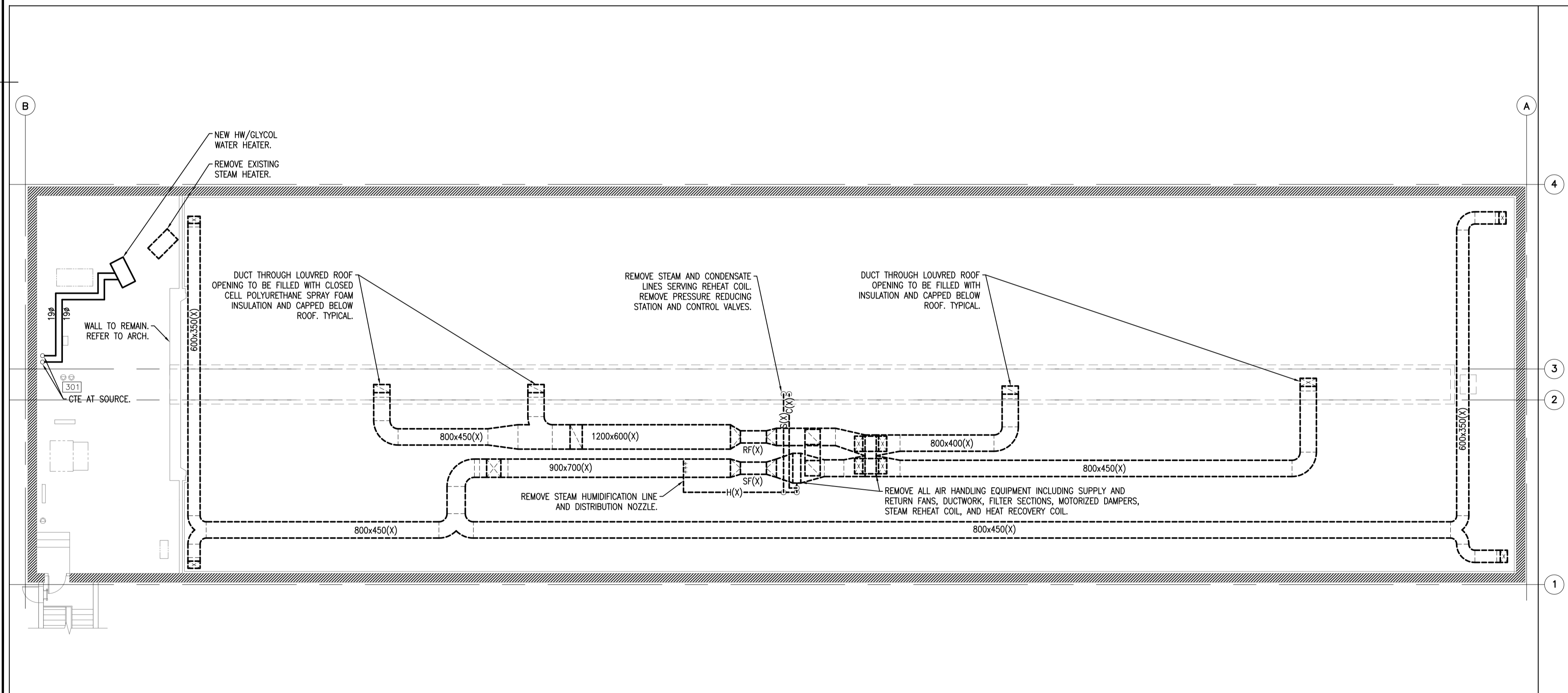
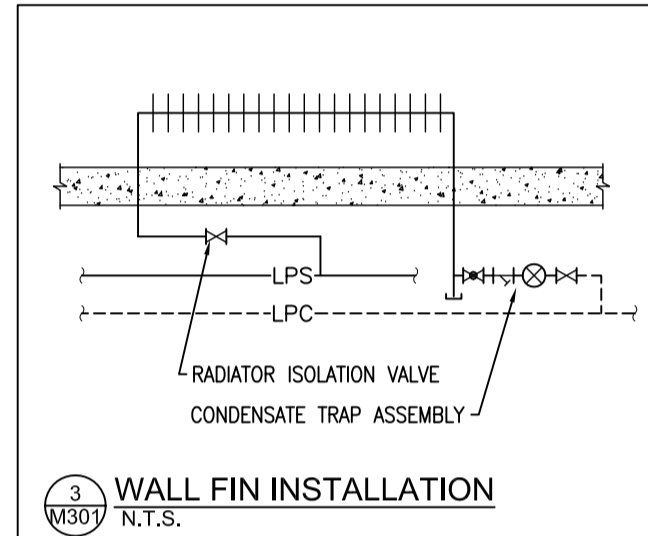
project no.  
no. du projet  
R.051672.001

drawing no.  
dessiné no.  
M300

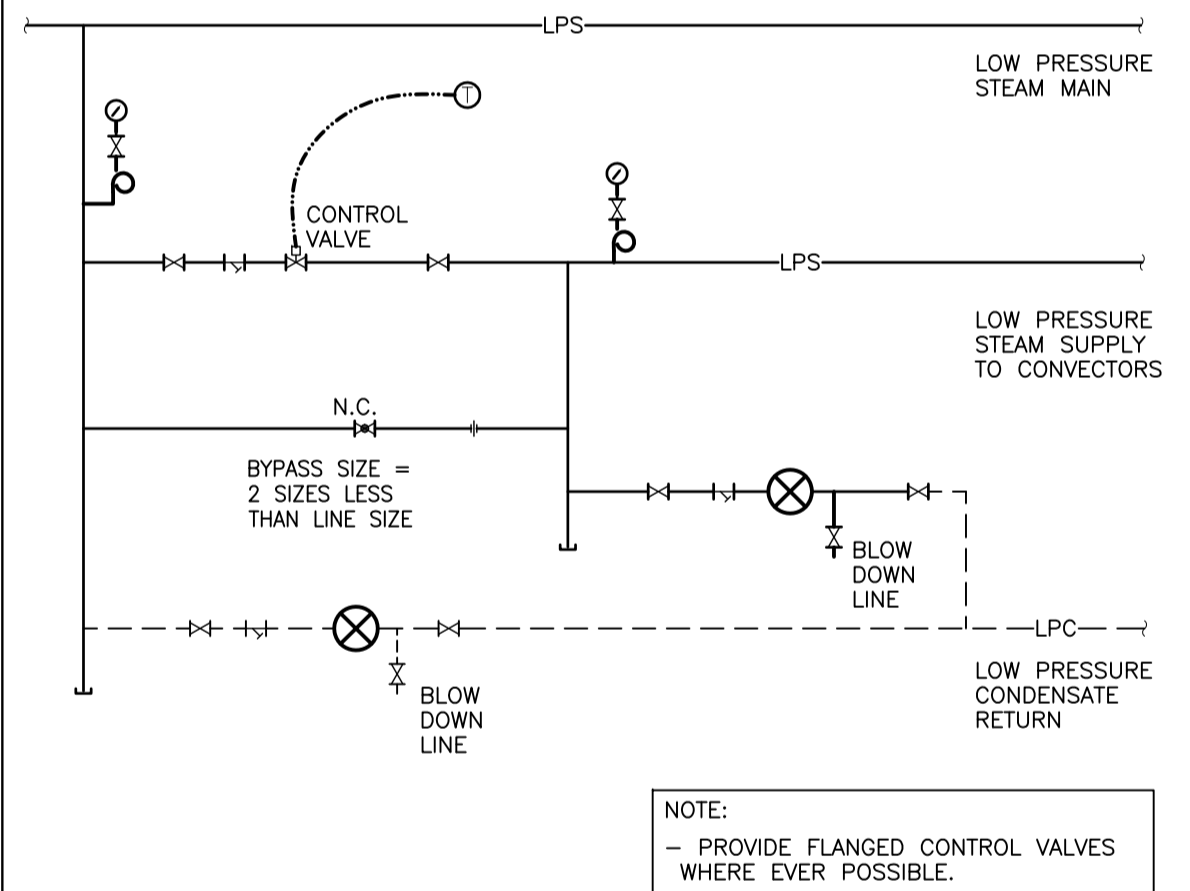


1 SECOND FLOOR PLAN - HVAC LAYOUT - DEMOLITION  
SCALE 1:150

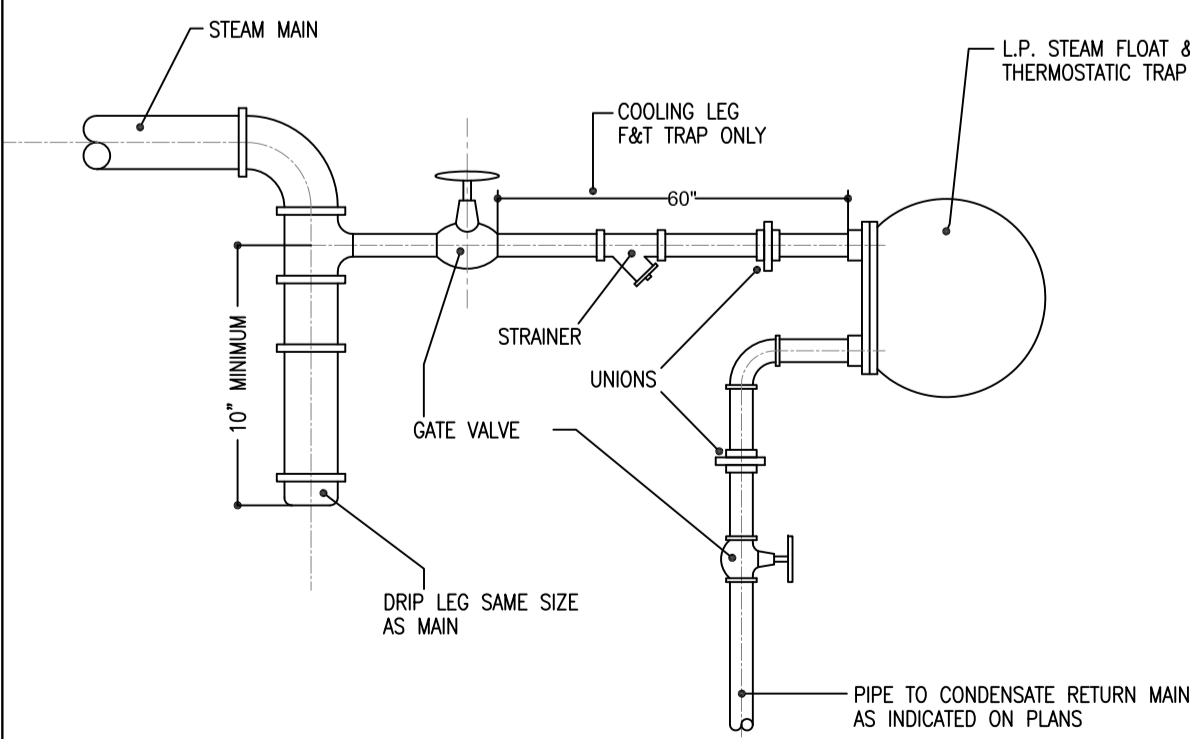
GENERAL NOTE  
REMOVE ALL ASSOCIATED HANGERS  
BRACKETS, SUPPORT WITH REMOVED  
EQUIPMENT AND SERVICES



2 ATTIC FLOOR PLAN - HVAC LAYOUT - DEMOLITION & NEW WORK  
SCALE 1:150



4 TYPICAL STEAM CONTROL VALVE INSTALLATION  
N.T.S.

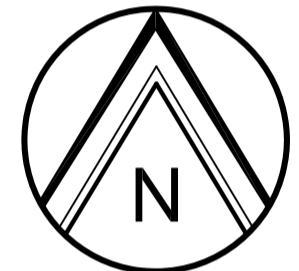


5 TYPICAL STEAM TRAP  
N.T.S.

**Public Works and  
Government Services Canada**  
Architectural and Engineering Services  
Ontario Region  
**Travaux publics et  
Services gouvernementaux Canada**  
Services d'architecture et de génie  
Région de l'Ontario

Architect/Structural Consultants:  
**CLEAND  
JARDINE**  
ENGINEERING LTD.  
200-1000 KENNEDY ROAD  
KAWATA, ONT. L8P 4B9  
(416) 591-1533  
CJE # 15-1234A

Mechanical & Electrical Consultants:  
**Jp2g Consultants Inc.**  
ENGINEERS • PLANNERS • PROJECT MANAGERS  
12 INTERNATIONAL DRIVE, FERRISBURGH, ON  
Phone: (905) 709-0001 Fax: (905) 709-0003  
1150 MORRISON DRIVE, SUITE 410, OTTAWA, ON  
Phone: (613) 628-7800 Fax: (613) 628-2800



|          |                       |           |
|----------|-----------------------|-----------|
| 04       | RE-ISSUED FOR TENDER  | AUG 15/16 |
| 03       | ISSUED FOR TENDER     | JUL 7/16  |
| 02       | ISSUED FOR 99% REVIEW | MAR 7/16  |
| 01       | ISSUED FOR 50% REVIEW | FEB 1/16  |
| revision |                       | date      |

Do not scale drawings.  
Verify all dimensions and conditions on site and  
immediately notify the departmental representative  
of all discrepancies.

|   |   |
|---|---|
| A | Detail No.  |
| B | No. du détail   |
| C | drawing no. - where detail required<br>dessin no. - où détail exigé |
| C | drawing no. - where detailed<br>dessin no. - où détaillé            |

project title  
titre du projet  
**Kingston, Ontario**  
**COLLINS BAY INSTITUTION**  
**CORRECTIONAL SERVICE CANADA**  
**1455 BATH ROAD**  
**CBI BLD'G B1: INTERIOR DEMOLITION**

drawing title  
titre du dessin  
**SECOND AND ATTIC FLOOR PLANS**  
**HVAC LAYOUT**  
**DEMOLITION AND NEW WORK**

drawn by  
dessiné par  
**T.A.**

designed by  
conçu par  
**A.M.**

approved by  
approuvé par  
**M.M.**

tender  
soumission  
**JACK TO**

project date  
date du projet  
**2016/02/19**

project no.  
no. du projet  
**R.051672.001**

drawing no.  
dessiné no.  
**M301**