

# **SURVEY NOTES**

SURVEY PARTY CHIEF: DARRYL GREEN  
 SURVEY VESSEL: SCOTIA SURVEYOR  
 SURVEY DATE(S): JUNE 10-11, 2015  
 SOUNDER TYPE: ROSS SWEEP SYSTEM  
 SOUNDER SETTING: INST. VEL. OF SOUND 1477 m/s  
 DEPTH GATE USED: N/A FRE. OF TRANS. 190-210 KHZ  
 LAND SURVEY POSITION BY RTK GPS TRIMBLE R7  
 RAW DATA FILE(S): BAL162MX.ZIP (HYPACK)  
 CAD DRAWING FILE(S): BAL162A.DWG

TIDAL REDUCTION SCHEME: REF TO NS MON, 11457, ELEV. 60.46m ABOVE CD.  
 REF TO CHS BM 65N9002, ELEV. 5.828m LOCATED IN PICTOU, CHART DATUM GSC DATUM  
 DIFFERENCE OF 0.82m APPLIED TO NS MON 11457 LISTED GSC ELEVATION.

OFFICE PROCESSOR: S. DUFFY  
 DATE OF PROCESSING: JUNE 2015

MODE OF PLOTTING: AVERAGE DEPTHS  
 MATRIX CELL WIDTH X LENGTH: 1.2m BY 3.0m

CONTROL POINTS: NAD83 (ORIGINAL) UTM ZONE 20  
 PL. NAME EASTING NORTHING C.D. ELEV. DESCRIPTION  
 NS 11457 583288.272 5078297.984 +60.46 LRIS CONTROL  
 PT "501" 583979.341 5079006.325 +2.98 PWSC  
 PT "502" 583993.715 5078919.420 +2.98 PWSC

NOTE: WHARF STRUCTURES AND LAND FEATURES ON THIS  
 PLAN WERE OBTAINED FROM REALTY PLAN S-9324  
 REVISED IN 2006.

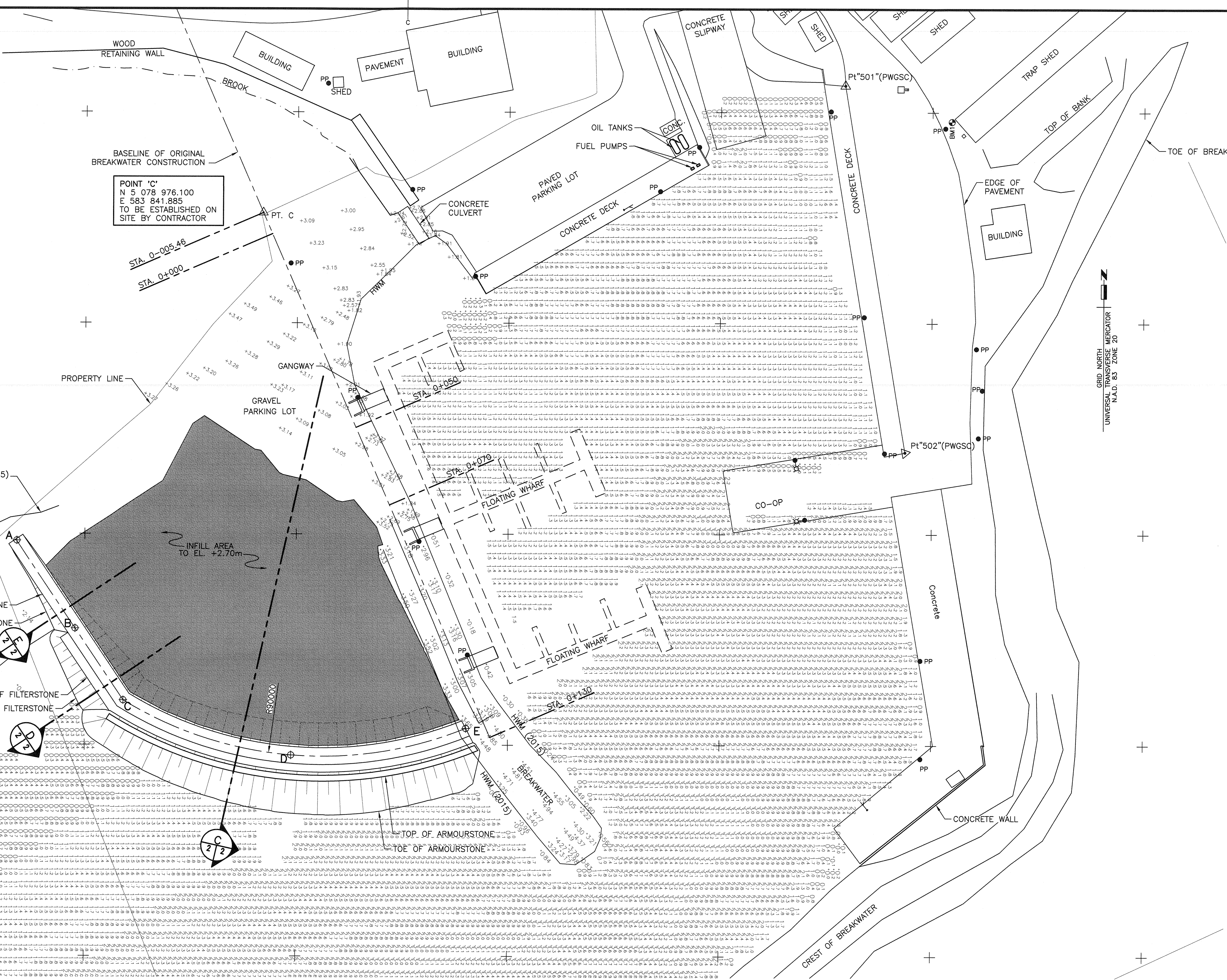
TOPO ELEVATIONS SURVEYED ON JUNE 10, 2015.

SOUNDINGS WERE ROUNDED ACCORDING TO CANADIAN  
 HYDROGRAPHIC SERVICE SURVEY STANDARDS.

## **LEGEND**

- PWSC HORIZONTAL CONTROL
- PWSC VERTICAL CONTROL
- SOUNDING/TOPOGRAPHIC ELEVATION
- HORIZONTAL CONTROL POINT
- TOPOGRAPHIC ELEVATION
- POWER POLE
- DERRICK
- NAVIGATION LIGHT

HORIZONTAL CONTROL POINTS				
MARK	EASTING	NORTHING	DESCRIPTION	
A	E 583 783.948	N 5 078 898.347	START OF BERM	
B	E 583 797.743	N 5 078 877.554	START OF FILTERSTONE SLOPE	
C	E 583 809.110	N 5 078 860.566	START OF ARMOURSTONE SLOPE AND START OF CURVE	
D	E 583 848.827	N 5 078 847.599	MIDPOINT OF CURVE	
E	E 583 890.119	N 5 078 853.963	END OF CURVE AND BERM	



## **SITE PLAN OF NEW WORK**

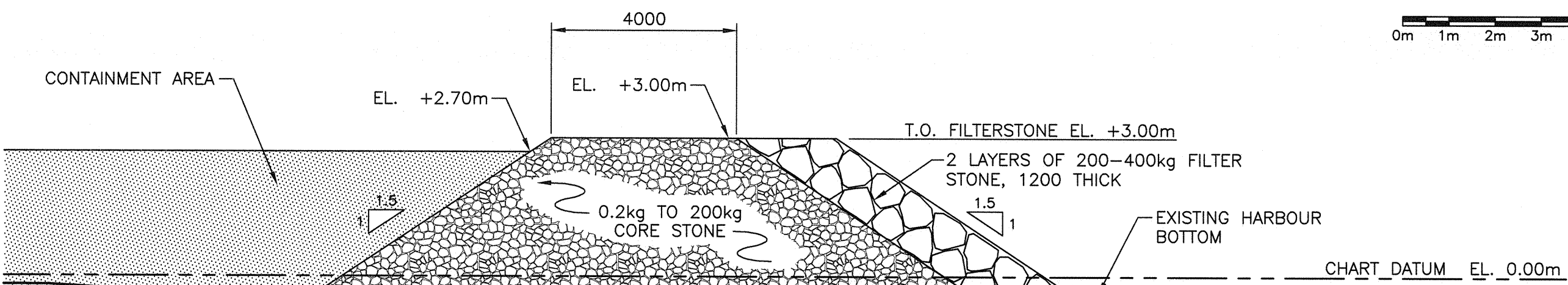
SCALE: 1:500

0m 10m 20m 30m 40m 50m

## **CONTAINMENT CELL SECTION**

SCALE: 1:100

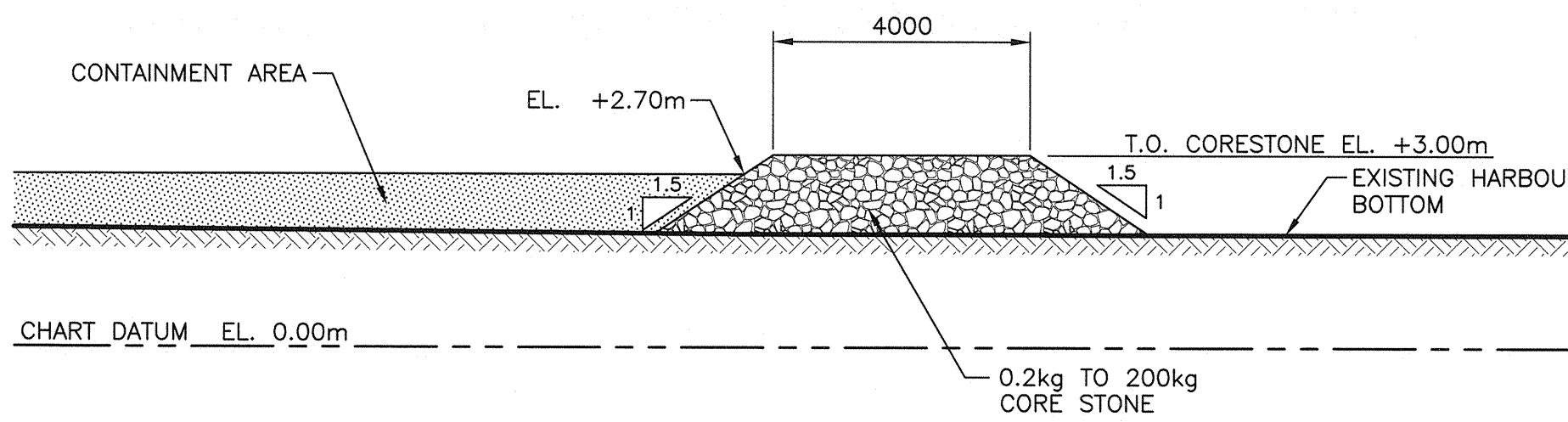
0m 1m 2m 3m 4m 5m 6m 7m 8m 9m 10m



## **SECTION @ FILTERSTONE SLOPE**

SCALE: 1:100

0m 1m 2m 3m 4m 5m 6m 7m 8m 9m 10m



## **SECTION @ CORESTONE SLOPE**

SCALE: 1:100

0m 1m 2m 3m 4m 5m 6m 7m 8m 9m 10m

0	ISSUED FOR TENDER	AUG 2016
revisions		date

## **BASIN DREDGING AND CONTAINMENT CELL CONSTRUCTION**

BALLANTYNES COVE  
 ANTIGONISH COUNTY NOVA SCOTIA

## **SITE PLAN AND SECTIONS OF NEW WORK**

designed	ROSALIA GALANTE	conçu
date	AUGUST 2016	
drawn	GEORGE PROSPER	dessiné
date	AUGUST 2016	
approved		approuvé
approved		approuvé
approved		approuvé
PWSC Project Manager	Administration de projets TPSGC	
project number	R.076163.001	no. du projet
drawing no.	SHT 2 OF 2	no. du dessin