

NOTES: UNLESS OTHERWISE STATED.


1. ONLY THE ITEM DESCRIBED ON THIS DRAWING WHEN PROCURED FROM THE VENDOR(S) LISTED HEREON IS APPROVED. A SUBSTITUTE ITEM SHALL NOT BE USED WITHOUT PRIOR APPROVAL BY SOUTHWEST WINDPOWER, FLAGSTAFF, ARIZONA.
2. ALL MATERIAL SHALL BE RoHS 2002/95/EC COMPLIANT.
3. PACKAGE TO ENSURE PROTECTION FROM CONTAMINATION AND DAMAGE RESULTING FROM HANDLING, STORAGE OR SHIPPING.

REVISIONS				
ZONE	REV.	DESCRIPTION	DATE	APPROVED
	A	ECO 101-2689, INITIAL RELEASE	04/10/2012	RES

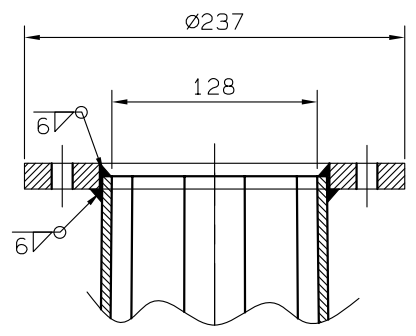
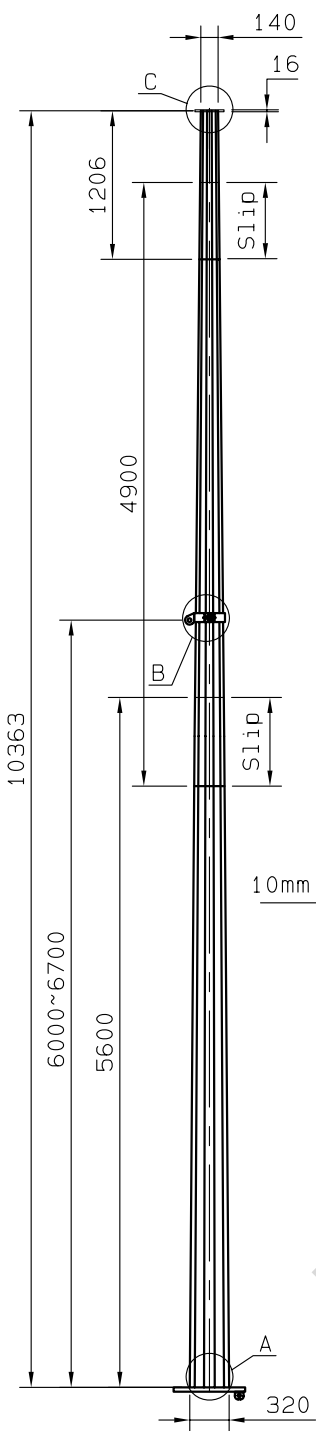
APPROVED SOURCE(S) OF SUPPLY

PART NUMBER	MANUFACTURER/VENDOR
3-CMBP-3218-20	AMERICAN RESOURCE & ENERGY www.arewindtowers.com

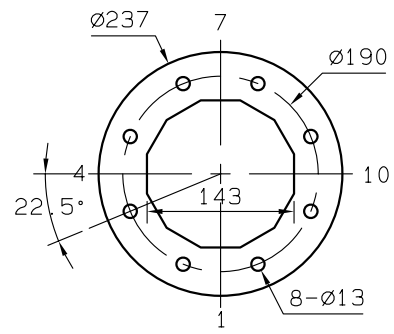
PROPRIETARY AND CONFIDENTIAL
THE INFORMATION CONTAINED IN THIS DRAWING IS THE SOLE PROPERTY OF Southwest Windpower. ANY REPRODUCTION IN PART OR AS A WHOLE WITHOUT THE WRITTEN PERMISSION OF Southwest Windpower IS PROHIBITED.

		UNLESS OTHERWISE SPECIFIED: BREAK ALL SHARP EDGES: .1 MAX ALL INSIDE CORNERS: .3 MAX FINISH: MAX. (MACH. SURFACES) DIMENSIONS ARE IN MM TOLERANCES: ANGULAR: MACH ± 1/2° BEND ± 1/2° X = ± N/A X.X = ± N/A X.XX = ± N/A X.XXX = ± N/A		NAME	DATE	 Southwest Windpower Flagstaff, Arizona U.S.A.
	DRAWN	R. SMITH	02/02/2012	TITLE:		
	CHECKED			TOWER 34 FT MONOPOLE 3 SECTION - 19 IN BC		
	ENG APPR.	M. SLATTERY	03/06/2012			
	MFG APPR.			Q.A.	SIZE	
				COMMENTS:	DWG. NO.	
					REV	
					SCALE: 1:1	
					WEIGHT:	
					SHEET 1 OF 2	

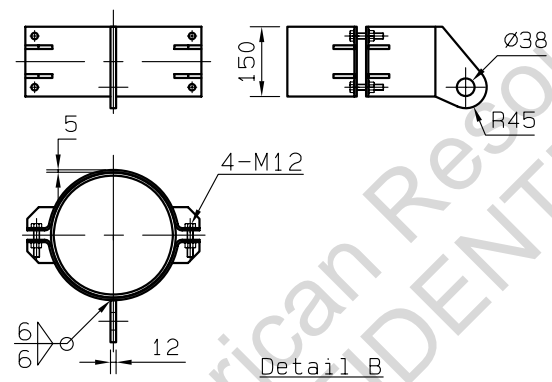
NEXT ASSY	USED ON	FINISH	SEE NOTES
APPLICATION			DO NOT SCALE DRAWING



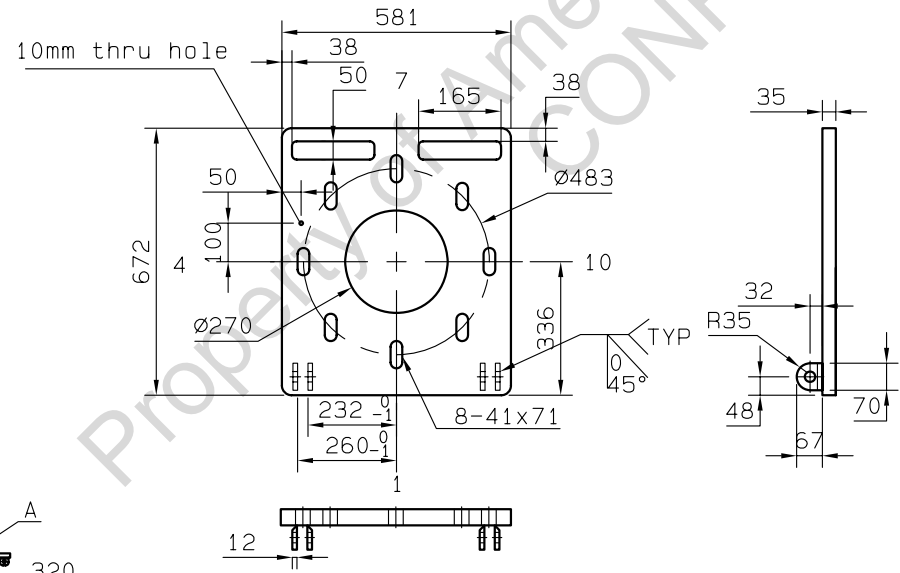
Detail C



Top Plate



Detail B
 Removable Clamp

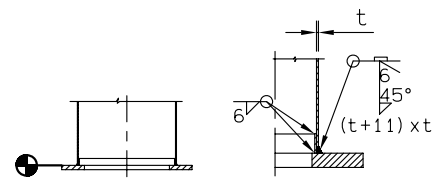


Base Plate

NOTES:

1. Tower will be used for Skystream 4.7 and 3.7
2. Minimum slip length is 2 times the inner diameter of female section
3. Material Data
 Pole shaft: ASTM A572 GR65, 450MPa
 Base plate: ASTM A572 GR50, 345MPa
 Top plate: ASTM A572 GR65, 450MPa
 Removable Clamp: ASTM A572 GR65, 450MPa
4. Unless otherwise specified dimensions are in mm
5. Pole shaft, and all load bearing plates to withstand a minimum impact energy of 27J at 20°C as measured in a Charpy-V test.
6. All welding shall conform to the minimum requirements of AWS D1.1
7. All parts will be galvanized per ASTM A123
8. Section information detail

Section #	1st	2nd	3rd
Thickness (mm):	6	5	6
Length (m):	5.6	4.9	1.206
Top (mm):	210.8	139.3	140.0
Bottom (mm):	320.0	234.9	163.5
Min Slip (mm):		337	227
Max Slip (mm):		719	624



Detail A

3-CMBP-3218-20 REV A

		American Resource & Energy www.arendtowers.com	
DWG SIZE A4H CLASS CODE _____			
CUSTOMER SWWP		DESCRIPTION 34' (600) Tower	
DRAWN JL33 Feb.23 2012	MATERIAL	ORDER NO	_____
ENGR JL33 Sep.07 2011	THK (mm)	SCALE	_____
CHECKED WJ1 Feb.23 2012	WT (kg)	VERSION:	G
SWWP PN 3-CMBP-3218-20	_____		