

APPENDIX B

Borehole Logs

BOREHOLE LOG

Borehole No: BH01-6-1 Page 1 of 1
Reference Level : _____

Project: Watson Lake – Phase III Site Assessment Client: PWGSC
Location: Watson Lake Project No.: 639-0101
Drilling Date: Sept. 12, 2001 Depth of Borehole: 5.18 m Diameter: 25 cm
Surface Elevation: 684.90 masl TOC: 684.76 masl Water Level: 681.34 masl
Screen Diameter: 5 cm Length: 2.74 m Slot size: #10 slot
Riser Diameter: 5 cm Length: 0.5 m Type: Sch 40 PVC
Drilling Company: Geotech Drilling Services Drilling Method: Hollow Stem Auger
Logged by: Clayton Truax

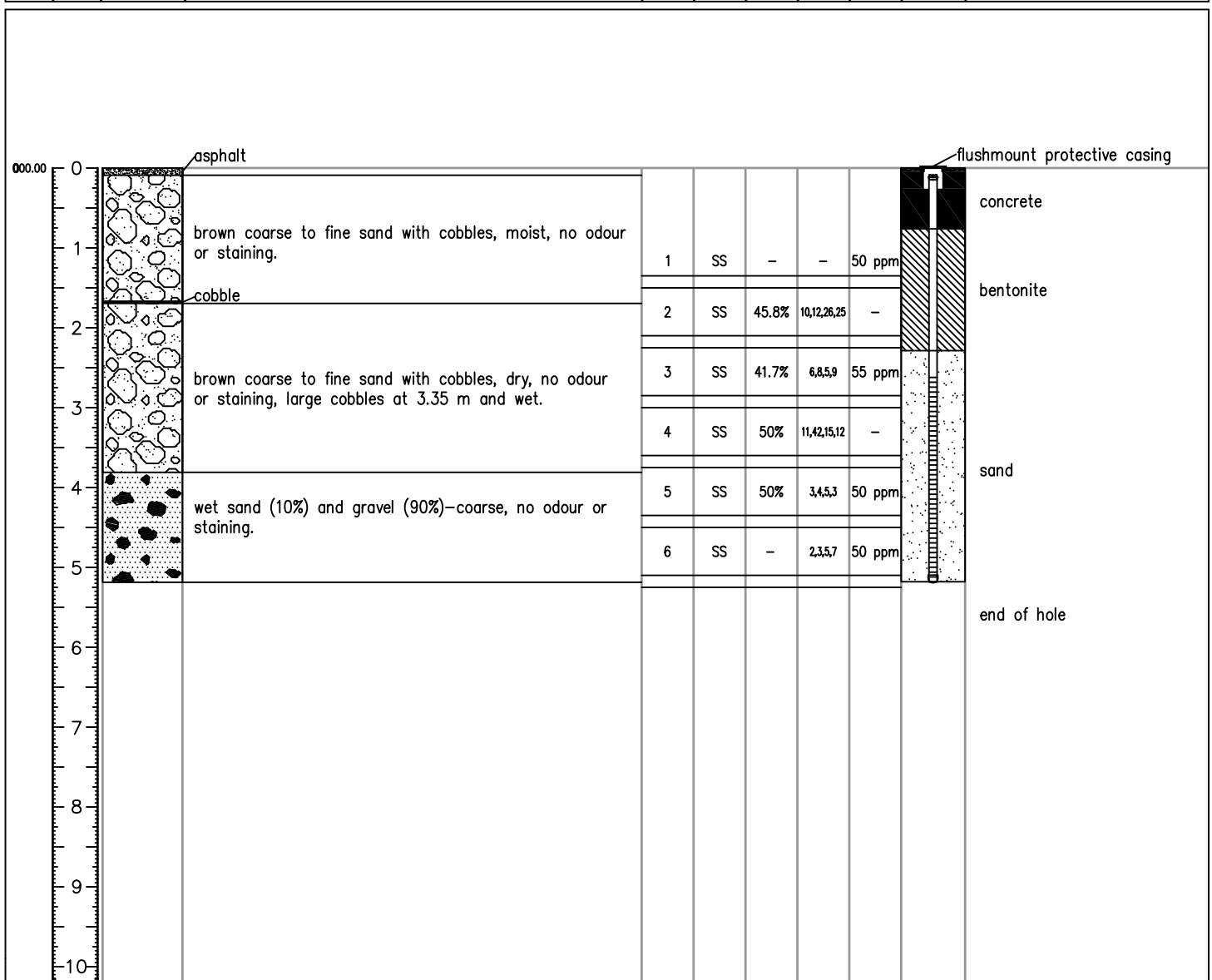
Site Plan

*refer to APEC
#6 figure*

Notes

* Indicates sample sent to lab.

Elevation (masl)	Depth (m)	Stratigraphy	SOIL CLASSIFICATION (colour, texture, structure)	Sample No.	Sample Type ss (split spoon)	Recovery (%)	"N"	V.O.C. (110 ppm)	Well Data	REMARKS
------------------	-----------	--------------	--	------------	------------------------------	--------------	-----	------------------	-----------	---------



Note: This borehole log was prepared for hydrogeological and/or environmental assessment purposes and does not necessarily contain information suitable for a geotechnical assessment of subsurface conditions. Borehole data require interpretation by Franz Environmental Inc. personnel before use by others.

Franz Environmental Inc.
39 Robertson Rd. Suite 220
Nepean, ON. K2H 8R2
Ph: (613) 721 0555
Fax: (613) 721 0029

BOREHOLE LOG

Borehole No: BH01-6-2 Page 1 of 1
Reference Level : _____

Site Plan

Project: Watson Lake- Phase III Site Assessment Client: PWGSC
 Location: Watson Lake Project No.: 639-0101
 Drilling Date: Sept. 12, 2001 Depth of Borehole: 4.59 m Diameter: 25 cm
 Surface Elevation: 685.05 masl TOC: 684.91 masl Water Level: 681.62 masl
 Screen Diameter: 5 cm Length: 2.74 m Slot size: #10 slot
 Riser Diameter: 5 cm Length: 0.5 m Type: Sch 40 PVC
 Drilling Company: Geotech Drilling Services Ltd. Drilling Method: Hollow Stem Auger
 Logged by: Clayton Truax

refer to APEC # 6 figure

Notes

* Indicates sample sent to lab

Elevation (masl)	Depth (m)	Stratigraphy	SOIL CLASSIFICATION (colour, texture, structure)	Sample No.	Sample Type (split spoon)	Recovery (%)	"N"	V.O.C. (110 ppm)	Well Data	REMARKS
------------------	-----------	--------------	--	------------	---------------------------	--------------	-----	------------------	-----------	---------

000.00	0	asphalt								
	1		medium coarse sand with cobbles, no odour or staining							no well installed
	2			1	ss	-	-	65 ppm		
	3		wet coarse rounded gravel with trace coarse sand, wet, no odour or staining.	2	ss	-	-	65 ppm		
	4			3	ss	-	-	65 ppm		
	5									
	6									
	7									
	8									
	9									
	10									

Note: This borehole log was prepared for hydrogeological and/or environmental assessment purposes and does not necessarily contain information suitable for a geotechnical assessment of subsurface conditions. Borehole data require interpretation by Franz Environmental Inc. personnel before use by others.

Franz Environmental Inc.
39 Robertson Rd. Suite 220
Nepean, ON. K2H 8R2
Ph: (613) 721 0555
Fax: (613) 721 0029

BOREHOLE LOG

Borehole No: BH01-6-3 Page 1 of 1
Reference Level : _____

Project: Watson Lake – Phase III Site Assessment Client: PWGSC
Location: Watson Lake Project No.: 639-0101
Drilling Date: Sept. 12, 2001 Depth of Borehole: 5.18 m Diameter: 10"
Surface Elevation: NA TOC: NA Water Level: NA
Screen Diameter: 2" Length: 7' Slot size: #10 slot
Riser Diameter: NA Length: NA Type: Sch 40 PVC
Drilling Company: Geotech Drilling Services Ltd. Drilling Method: Hollow Stem Auger
Logged by: Clayton Truax

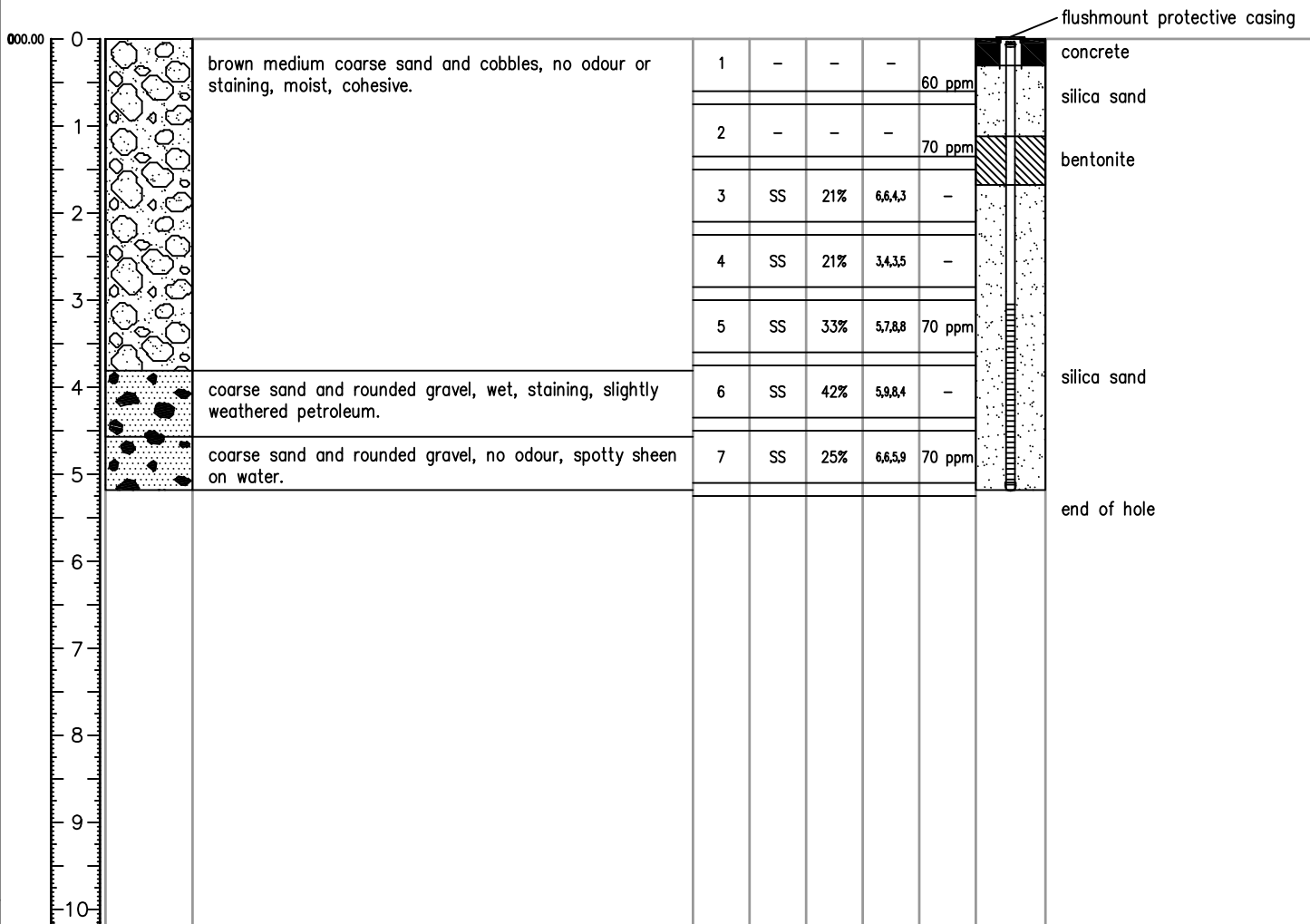
Site Plan

*refer to APEC
#6 figure*

Notes

* Indicates sample sent to lab.

Elevation (masl)	Depth (m)	Stratigraphy	SOIL CLASSIFICATION (colour, texture, structure)	Sample No.	Sample Type ss (split spoon)	Recovery (%)	"N"	V.O.C. (110 ppm)	Well Data	REMARKS
------------------	-----------	--------------	--	------------	------------------------------	--------------	-----	------------------	-----------	---------



Note: This borehole log was prepared for hydrogeological and/or environmental assessment purposes and does not necessarily contain information suitable for a geotechnical assessment of subsurface conditions. Borehole data require interpretation by Franz Environmental Inc. personnel before use by others.

Franz Environmental Inc.
39 Robertson Rd. Suite 220
Nepean, ON. K2H 8R2
Ph: (613) 721 0555
Fax: (613) 721 0029



Borehole Log: 06-05BH01

MW05-6-9

Project No.: 639-0503

Project: Watson Lake

Client: PWGSC

Logged By: MR & RJW

Location: Watson Lake

Checked By: EVW

SUBSURFACE PROFILE				SAMPLE				Well Description
Depth	Symbol	Description	Depth/Elev.	Sample No.	Type	Sample Recovery (%)	Vapour ppm 100 300 500 700 900	
-3 ft -3 m								
		Ground Surface	0.0	1-1		90	55 x	
1	●	SAND AND GRAVEL Fine to medium grained sand and gravel, loose, brown, dry						
3	●			1-2		100	60 x	
5	●	- 1.5m to 6.1m: dense		1-3			50 x	
7	●							
9	●	- wet below 2.4m		1-4			75 x	
11	●			1-5			130 x	
13	●			1-6			85 x	
15	●							
17	●			1-7			30 x	
19	●							
21		End of Hole	6.1					
23								

Drilled By: Geotech

Hole Dia: 77 mm

Well Dia: 55 mm

Drill Method: Geoprobe

Grnd Elev: NA

TOC Elev: NA

Drill Date: 27/09/05

Sheet: 1 of 1



Borehole Log: 06-05BH02

MW05-6-10

Project No.: 639-0503

Project: Watson Lake

Client: PWGSC

Location: Watson Lake

Logged By: MR & RJW

Checked By: EVW

SUBSURFACE PROFILE				SAMPLE				Well Description
Depth	Symbol	Description	Depth/Elev.	Sample No.	Type	Sample Recovery (%)	Vapour ppm	
							100 300 500 700 900	
-3 ft -3 m								
		Ground Surface						
1		SAND AND GRAVEL Medium grained sand and gravel, some cobbles, some organics, loose to dense, brown, dry to wet	0.0	2-1		30	25 x	
3								
5								
7	2			2-2		30	25 x	
9				2-3			350 x	
11		- 2.7m to 3.4m: coarse sand and gravel, wet, strong hydrocarbon odour		2-4		50	130 x	
13	4							
15		- 4.3m to 4.9m: strong hydrocarbon odour		2-5		100	100 x	
17				2-6			70 x	
19	6							
		- 5.8m: moderate hydrocarbon odour		2-7			15 x	
21		End of Hole	6.1					

Drilled By: Geotech

Hole Dia: 77 mm

Well Dia: 55 mm

Drill Method: Geoprobe

Grnd Elev: NA

TOC Elev: NA

Drill Date: 27/09/05

Sheet: 1 of 1



Borehole Log: 06-05BH03

MW05-06-11

Project No.: 639-0503

Project: Watson Lake

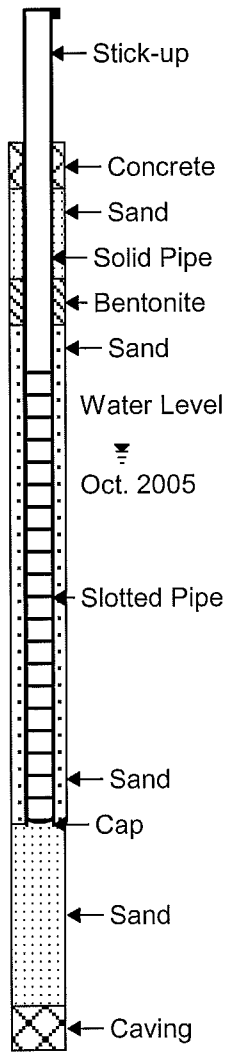
Client: PWGSC

Location: Watson Lake

Logged By: RJW

Checked By: EVW

SUBSURFACE PROFILE				SAMPLE				Well Description
Depth	Symbol	Description	Depth/Elev.	Sample No.	Type	Sample Recovery (%)	Vapour ppm	
							100 300 500 700 900	
ft m								
-3								
-1								
1		Ground Surface	0.0					
1		SILT Some sand, trace rootlets, dark brown, moist, firm,		3-1		60		
3		SAND AND GRAVEL Fine to medium grained sandy gravel, compact, grey, moist to wet		3-2		0		
5		- reddish staining 0.2m - 0.3m		3-3		0		
7	2							
9				3-4		100		
11				3-5		25		
13	4			3-6		45		
15		- 4.6m: trace gravel				60		
17				3-7		170		
19	6			3-8		25		
21		End of Hole	6.1					



Drilled By: Geotech

Hole Dia: 77 mm

Well Dia: 55 mm

Drill Method: Geoprobe

Grnd Elev: 682.541

TOC Elev: 683.441

Drill Date: 27/09/05

Sheet: 1 of 1

SUBSURFACE PROFILE				SAMPLE			Organic Vapour Rdg. PPM	Well Completion Details	
Depth (m)	Symbol	Description	Elev.	Number	Type	Recovery			
0		Ground Surface	0.0						
1	[Sand symbol]	Sand medium, trace silt, some gravel, brown, loose, moist, no odour	-1.5	12-1	G		0		
2									
3				12-2	G		0		
4									
5	[Sand symbol]	Sand medium, trace silt, some gravel, compact, brown, moist, no odour	-2.4	12-3	G		5		
6									
7									
8	[Silty Sand symbol]	Silty Sand medium, some gravel, reddish brown, moist, slight odour	-3.1	12-4	G		0		
9									
10									
11	[Sand symbol]	Sand coarse, some gravel, brown, loose, some odour *13ft greying	-4.6	12-5	G		15		
12									
13				12-6	G		85		
14									
15	[Sand symbol]	Sand coarse, trace gravel, grey/brown, loose, moist, no odour	-6.1						
16									
17				12-7	G		130		
18									
19				12-8	G		50		
20									
21		End of Borehole							
22									
23									
24									
25									
26									

Drilled By: GeoTech Drilling Services

Comments: Sample analysis BTEX/VPH, EPH, PAHs.

Drill Method: Direct Push

Hole Diameter: 4.5"

Well Diameter:

**Franz
Environmental
Inc.**

CONSULTING ♦ ENGINEERS ♦ TECHNOLOGIES ♦

Project No: 639-0904

Borehole Log: BH09-6-13

Project: Watson Lake Supplemental Drilling

Site ID: AEC 6

Client: PWGSC/TC

Logged By: Anna Raynham

Location: Watson Lake, Yukon

Checked By: Ivy Liu

Date: Aug. 17, 2009

SUBSURFACE PROFILE				SAMPLE			Organic Vapour Rdg. PPM 0 200 400 600 800 1000	Well Completion Details
Depth (m)	Symbol	Description	Elev.	Number	Type	Recovery		
0		Ground Surface	0.0					
1		Silt fine, some sand, light brown, loose, moist		13-1	G		25	
2			-0.9					
3		Sand medium, some gravel, trace silt, brown, loose, no odour		13-2	G		10	
4			-1.8					
5		Sand coarse, some gravel, brown, loose, moist, no odour		13-3	G		5	
6			-2.4					
7		Sand medium, trace silt, trace gravel, brown, wet		13-4	G		70	
8			-3.1					
9		Sand medium to coarse, trace gravel, dark brown, wet, no odour		13-5	G		55	
10			-4.9					
11		Sand medium, trace gravel, brownish grey, wet, no odour		13-6	G		55	
12			-6.1					
13		End of Borehole						
14								
15								
16								
17								
18								
19								
20								
21								
22								
23								
24								
25								
26								

Drilled By: GeoTech Drilling Services

Comments: sample analysis BTEX/VPH, EPH, and PAHs.

Drill Method: Direct Push

Hole Diameter: 4.5"

Well Diameter:

SUBSURFACE PROFILE				SAMPLE			Organic Vapour Rdg. PPM 0 200 400 600 800 1000	Well Completion Details
Depth (m)	Symbol	Description	Elev.	Number	Type	Recovery		
0		Ground Surface	0.0					
0 to 1		Silty Sand medium, trace gravel, brown, loose, moist, no odour		14-1	G		0	
1 to 5		Sand coarse, trace gravel, trace silt, brown, moist to wet, no odour	-1.5	14-2	G		5	
5 to 7		Sand coarse to medium, trace gravel, trace silt, brown, wet, no odour	-3.1	14-3	G		5	
7 to 8		Sand coarse to medium, trace gravel, trace silt, brown, wet, no odour	-3.7	14-4	G		20	
8 to 11		Sand coarse to medium, trace gravel, trace silt, brown, wet, no odour	-3.1	14-5	G		80	
11 to 13		Sand coarse to medium, trace gravel, trace silt, brown, wet, no odour	-3.7	14-5	G		80	
13 to 14		Sand fine to medium, trace gravel, dark brown, loose, wet, no odour	-4.6	14-6	G		55	
14 to 15		Sand fine to medium, trace gravel, dark brown, loose, wet, no odour	-4.6	14-6	G		55	
15 to 16		End of Borehole						
16 to 17		End of Borehole						
17 to 18		End of Borehole						
18 to 19		End of Borehole						
19 to 20		End of Borehole						
20 to 21		End of Borehole						
21 to 22		End of Borehole						
22 to 23		End of Borehole						
23 to 24		End of Borehole						
24 to 25		End of Borehole						
25 to 26		End of Borehole						

Drilled By: GeoTech Drilling Services

Comments: Sample analysis BTEX/VPH, EPH, PAHs.

Drill Method: Direct Push

Hole Diameter: 4.5"

Well Diameter: 2"

SUBSURFACE PROFILE				SAMPLE			Organic Vapour Rdg. PPM 0 200 400 600 800 1000	Well Completion Details
Depth (m)	Symbol	Description	Elev.	Number	Type	Recovery		
0		Ground Surface	0.0					
1		Silty Clay trace sand, trace gravel, reddish black, compact, moist		15-1	G		60	
2			-0.9					
3		Sand medium, some gravel, reddish brown, loose, moist, no odour		15-2	G		0	
4			-1.8					
5		Sand coarse to medium, dark brown, loose, moist		15-3	G		15	
6								
7		Sand medium to coarse, trace gravel, grey, loose, wet, no odour		15-4	G		60	
8			-3.1					
9		Sand medium to coarse, trace gravel, grey, loose, wet, no odour		15-5	G		100	
10			-4.0					
11		Sand medium to coarse, some gravel, grey, wet, no odour		15-6	G		35	
12			-4.6					
13		End of Borehole						
14								
15								
16								
17								
18								
19								
20								
21								
22								
23								
24								
25								
26								

Drilled By: GeoTech Drilling Services

Comments: Sample analysis BTEX/VPH, EPH, PAHs

Drill Method: Direct Push

Hole Diameter: 4.5"

Well Diameter: 2"

SUBSURFACE PROFILE				SAMPLE			Organic Vapour Rdg. PPM 0 200 400 600 800 1000	Well Completion Details			
Depth (m)	Symbol	Description	Elev.	Number	Type	Recovery					
0		Ground Surface	0.0								
1		Sand coarse to medium, some gravel, trace silt, brown, loose, moist, no odour		16-1	G		70				
2											
3											
4											
5											
6			-2.4	16-2	G		80				
7											
8		Sand and Gravel coarse, greyish brown, loose, wet, no odour		16-3	G		40				
9											
10			-3.1								
11		Sand and Gravel trace silt, brown, loose, wet, no odour		16-4	G		10				
12											
13			-4.0								
14		Sand medium to coarse, trace gravel, loose, wet, no odour		16-5	G		30				
15											
16		End of Borehole									
17											
18											
19											
20											
21											
22											
23											
24											
25											
26											

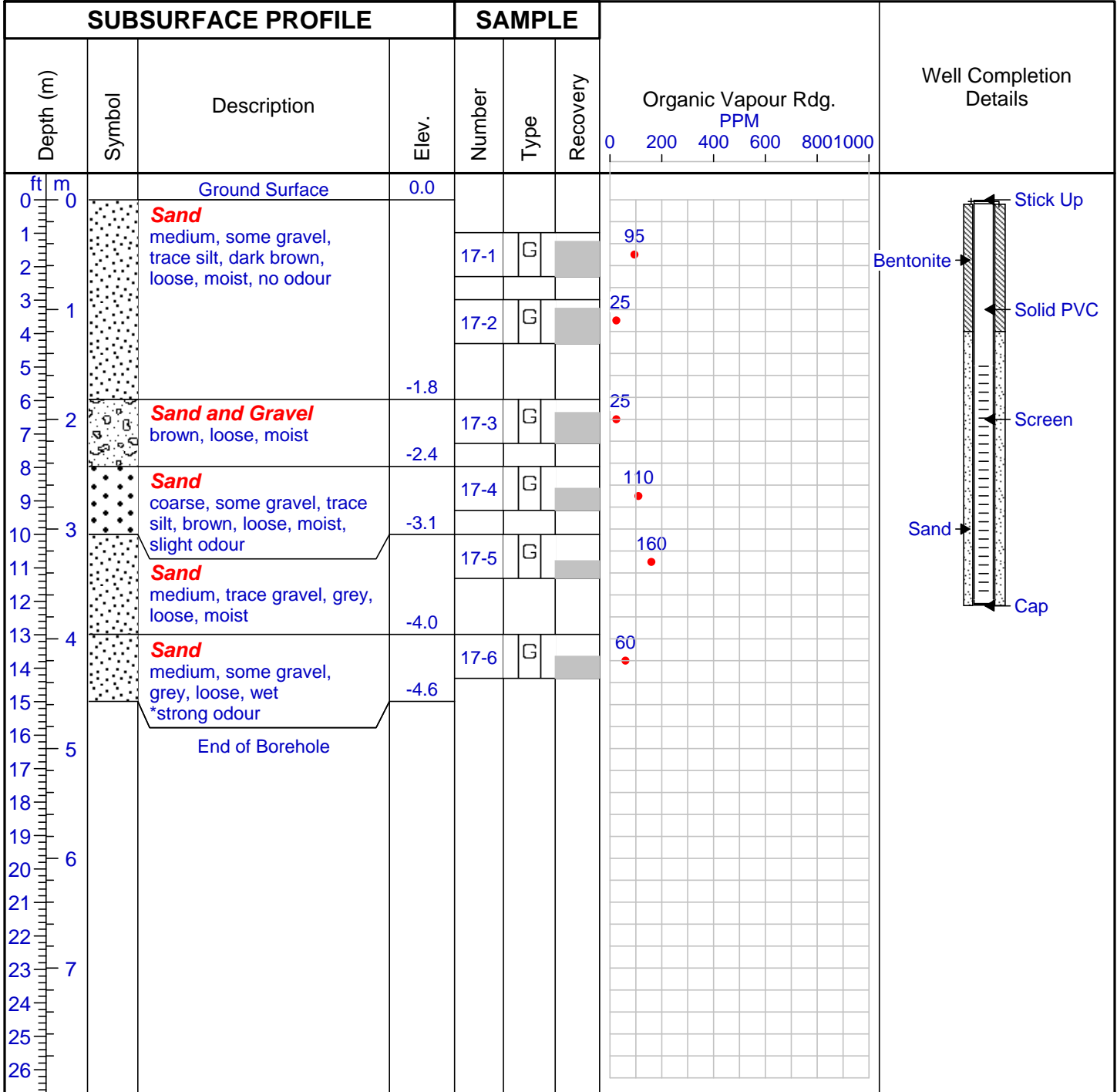
Drilled By: GeoTech Drilling Services

Comments: Sample analysis BTEX/VPH, EPH, PAHs

Drill Method: Direct Push

Hole Diameter: 4.5"

Well Diameter: 2"



Drilled By: GeoTech Drilling Services

Comments: Sample analysis BTEX/VPH, EPH, PAHs

Drill Method: Direct Push

Hole Diameter: 4.5"

Well Diameter: 2"

SUBSURFACE PROFILE				SAMPLE			Organic Vapour Rdg. PPM 0 200 400 600 800 1000	Well Completion Details
Depth (m)	Symbol	Description	Elev.	Number	Type	Recovery		
0		Ground Surface	0.0					
1	[Sand symbol]	Sand medium to coarse, some gravel, trace silt, brown, loose, moist, no odour		18-1	G		35	
2								
3				18-2	G		50	
4								
5			-1.8					
6	[Sand symbol]	Sand medium, some gravel, dark brown, loose, moist, no odour		18-3	G		30	
7								
8			-2.4					
9	[Sand and Gravel symbol]	Sand and Gravel medium, dark brown, wet *slight odour		18-4	G		570	
10								
11			-3.1					
12	[Sand symbol]	Sand medium, trace gravel, grey, loose, moist, slight odour		18-5	G		75	
13								
14				18-6	G		75	
15			-4.6					
16		End of Borehole						
17								
18								
19								
20								
21								
22								
23								
24								
25								
26								

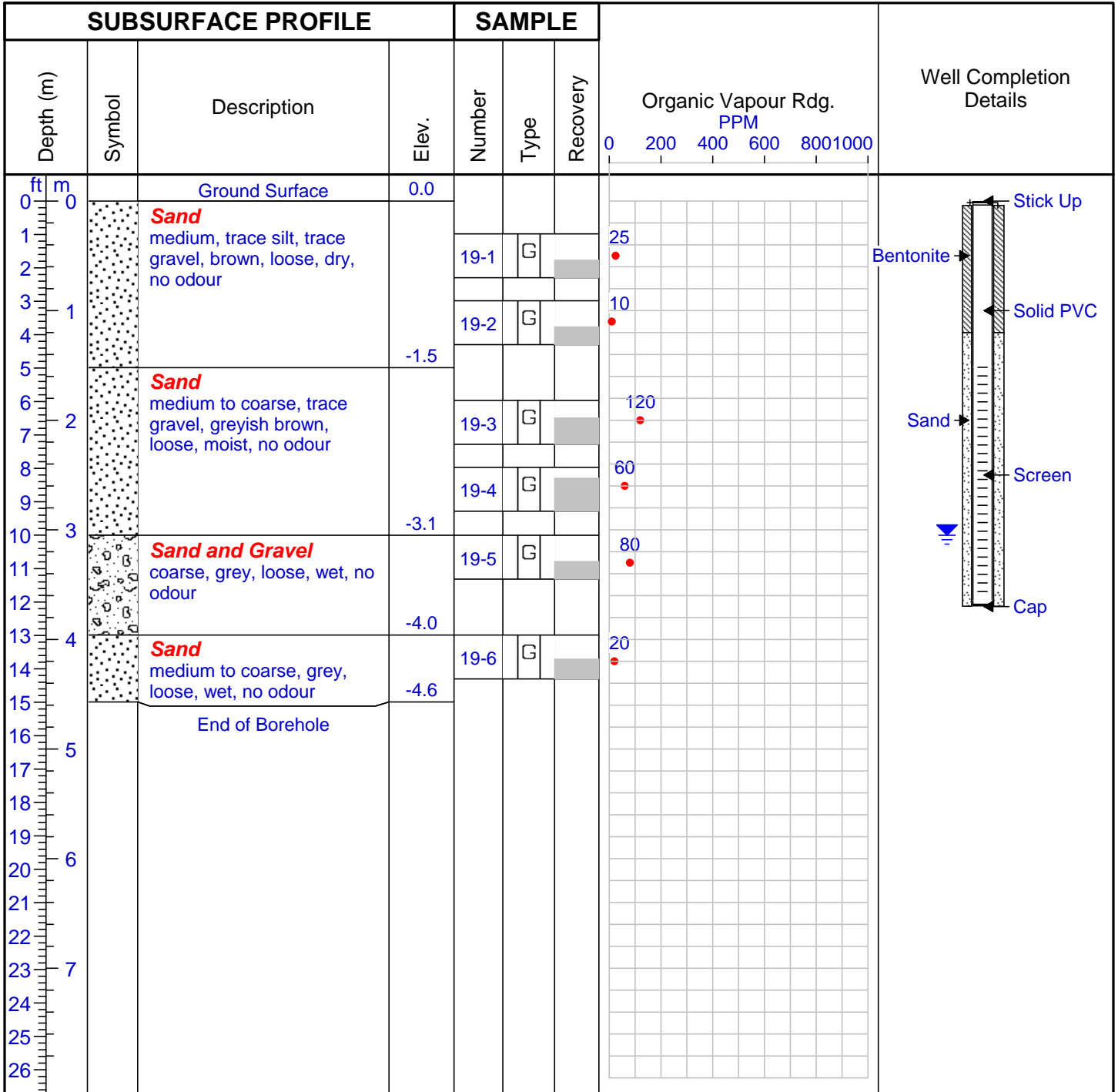
Drilled By: GeoTech Drilling Services

Comments: Sample analysis BTEX/VP, EPH, PAHs

Drill Method: Direct Push

Hole Diameter: 4.5"

Well Diameter: 2"



Drilled By: GeoTech Drilling Services

Drill Method: Direct Push

Hole Diameter: 4.5"

Well Diameter: 2"

Comments: Dup-4 duplicate of sample 19-5

- Sample analysis BTEX/VP, EPH, PAHs

**Franz
Environmental
Inc.**

CONSULTING ♦ ENGINEERS ♦ TECHNOLOGIES ♦

Project No: 639-0904 **Borehole Log: BH09-6-20**
Project: Watson Lake Supplemental Drilling **Site ID: 6**
Client: PWGSC/TC **Logged By: Chelsea Dupuis**
Location: Watson Lake, Yukon **Checked By: Ivy Liu**
Date: Oct.22, 2009

SUBSURFACE PROFILE				SAMPLE			Organic Vapour Rdg. PPM 0 200 400 600 800 1000	Well Completion Details
Depth (m)	Symbol	Description	Elev.	Number	Type	Recovery		
0		Ground Surface	0.0					
1	●	Sand medium to coarse, trace gravel, brown, dry to moist, loose *clay layer 0.2m thick just below surface		20-1	G		10	
2	●							
3	●							
4	●							
5	●	Sand coarse, trace gravel, grey, wet, loose *PHC odour at 9-15ft Refusal at 15ft due to heave	-3.1	20-2	G		95	
6	●							
7	●							
8	●							
9	●	End of Borehole	-4.7	20-3	G		65	
10	●							
11	●							
12	●							
13	●							
14	●							
15	●							
16	●							
17	●							
18	●							
19	●							
20	●							
21	●							
22	●							
23	●							
24	●							
25	●							
26	●							

Drilled By: GeoTech Drilling Services
 Drill Method: Direct Push
 Hole Diameter: 4.5"
 Well Diameter: N/A

Comments: Sample analysis PAHs, EPHs

SUBSURFACE PROFILE				SAMPLE			Organic Vapour Rdg. PPM 0 200 400 600 800 1000	Well Completion Details
Depth (m)	Symbol	Description	Elev.	Number	Type	Recovery		
0		Ground Surface	0.0					
1		Sandy Clay trace gravel, compact, brown, dry to moist	-0.6	21-1	G		15	
2								
3		Sand and Gravel fine to medium, brown, loose, dry to moist						
4								
5		*slight odour at 6-8ft						
6		*HC odour and grey in color at 10-12ft		21-2	G		100	
7								
8								
9								
10								
11			-3.7	21-3	G		510	
12								
13		Sand medium to coarse, trace gravel, grey, loose, wet, hydrocarbon odour	-4.6	21-4	G		0	
14								
15								
16		End of Borehole						
17								
18								
19								
20								
21								
22								
23								
24								
25								
26								

Water Level

Drilled By: GeoTech Drilling Services
 Drill Method: Direct Push
 Hole Diameter: 4.5"
 Well Diameter: N/A

Comments: Sample analysis PAHs and EPHs

SUBSURFACE PROFILE				SAMPLE			Organic Vapour Rdg. PPM 0 200 400 600 800 1000	Well Completion Details	
Depth (m)	Symbol	Description	Elev.	Number	Type	Recovery			
0		Ground Surface	0.0					Water Level	
1		Sand and Gravel fine to medium, brown, loose, dry to wet							
2									
3		*clay layer 0.2m thick @ 2 ft			22-1	G			15
4									
5									
6		*slight odour at 6-7ft, grey in color			22-2	G			150
7									
8		*HC odour and grey in color at 10-11ft							
9		*black at 11-12ft							
10									
11									460
12					22-3	G			
13									
14					22-4	G			10
15				-4.6					
16		End of Borehole							
17									
18									
19									
20									
21									
22									
23									
24									
25									
26									

Drilled By: GeoTech Drilling Services

Comments: Analysis: All samples for PAHs and EPHs

Drill Method: Direct Push

Hole Diameter: 4.5"

Well Diameter: N/A

SUBSURFACE PROFILE				SAMPLE			Organic Vapour Rdg. PPM 0 200 400 600 800 1000	Well Completion Details	
Depth (m)	Symbol	Description	Elev.	Number	Type	Recovery			
0		Ground Surface	0.0					Water Level	
1		Sand and Gravel coarse to medium, brown, loose, dry to moist							
2									
3									
4			*2-3ft clay layer, compact		23-1	G			5
5									
6			*4-5ft organics, black, and medium to fine sand						
7									
8			* 7-10ft HC odours		23-2	G			10
9									
10			*10-12ft black in color						
11			*13-14ft red in color		23-3	G			
12			*14-15ft orange in color						
13									
14									
15				-4.6	23-4	G			10
16		End of Borehole							
17									
18									
19									
20									
21									
22									
23									
24									
25									
26									

Drilled By: GeoTech Drilling Services

Drill Method: Direct Push

Hole Diameter: 4.5"

Well Diameter: N/A

Comments: Analysis: All samples for PAHs and EPHs

- Dup 28 duplicate of sample 23-2

SUBSURFACE PROFILE				SAMPLE			Organic Vapour Rdg. PPM 0 200 400 600 800 1000	Well Completion Details
Depth (m)	Symbol	Description	Elev.	Number	Type	Recovery		
0		Ground Surface	0.0					Water Level
1		Sand and Gravel fine to medium, brown, loose, dry to moist						
2								
3							10	
4		*3-4ft red clay, semi compact		24-1	G			
5								
6								
7								
8								
9								
10			-3.1	24-2	G		40	
11		Sand fine to coarse, grey, loose, wet						
12								
13								
14		*9-15ft HC odour, significantly less at 15ft						
15			-4.6	24-3	G		5	
16		End of Borehole						
17								
18								
19								
20								
21								
22								
23								
24								
25								
26								

Drilled By: GeoTech Drilling Services

Drill Method: Direct Push

Hole Diameter: 4.5"

Well Diameter: N/A

Comments: Analysis: All samples for PAHs and EPHs

- Refusal due to heave

SUBSURFACE PROFILE				SAMPLE			Organic Vapour Rdg. PPM 0 200 400 600 800 1000	Well Completion Details
Depth (m)	Symbol	Description	Elev.	Number	Type	Recovery		
0		Ground Surface	0.0					Water Level
1		Sand and Gravel fine to medium, brown, loose, dry to moist		25-1	G		5	
2								
3		*3-4ft red clay layer, compact, dry to moist						
4								
5								
6								
7								
8								
9								
10			-3.1	25-2	G		10	
11		Sand fine to medium, trace gravel, grey, loose, wet		25-3	G		320	
12								
13								
14		*10-13ft slight HC odour						
15				25-4	G		20	
16		End of Borehole						
17								
18								
19								
20								
21								
22								
23								
24								
25								
26								

Drilled By: GeoTech Drilling Services

Drill Method: Direct Push

Hole Diameter: 4.5"

Well Diameter: N/A

Comments: Samples 25-2, 25-3 and 25-4 analyzed for
- PAHs and EPHs

SUBSURFACE PROFILE				SAMPLE			Organic Vapour Rdg. PPM 0 200 400 600 800 1000	Well Completion Details
Depth (m)	Symbol	Description	Elev.	Number	Type	Recovery		
0		Ground Surface	0.0					Water Level ↓
1		Sand and Gravel fine to medium, brown, loose, dry to moist		26-1	G		10	
2		* 2-3ft trace clay						
3		*9-12ft grey color and HC odour						
4								
5								
6								
7								
8								
9								
10			-3.1	26-2	G		0	
11		Sand medium to coarse, trace gravel, grey, loose, wet						
12		*Refusal due to heave						
13								
14								
15			-4.6	26-3	G		210	
16		End of Borehole						
17								
18								
19								
20								
21								
22								
23								
24								
25								
26								

Drilled By: GeoTech Drilling Services
 Drill Method: Direct Push
 Hole Diameter: 4.5"
 Well Diameter: N/A

Comments: Analysis: All samples for PAHs and EPHs
 - Dup 29 duplicate of sample 26-2

SUBSURFACE PROFILE				SAMPLE			Organic Vapour Rdg. PPM 0 200 400 600 800 1000	Well Completion Details
Depth (m)	Symbol	Description	Elev.	Number	Type	Recovery		
0		Ground Surface	0.0					Water level
1	[Symbol: Sand and Gravel]	Sand and Gravel fine to medium, brown, loose, dry to moist						
2								
3	[Symbol: Clay Layer]	*2-3ft clay layer, red, semi compact, dry to moist						
4								
5					27-1	G		
6								
7	[Symbol: Sand]							
8								
9								
10				27-2	G		70	
11			-3.4					
12		Sand trace gravel, brown, loose, wet		27-4	G		220	
13		*11-12ft slight HC odour, black						
14		*14-15ft orange, sheen present						
15			-4.6	27-3	G		45	
16		End of Borehole						
17								
18								
19								
20								
21								
22								
23								
24								
25								
26								

Drilled By: GeoTech Drilling Services

Comments: Analysis: PAHs and EPHs for all samples

Drill Method: Direct Push

Hole Diameter: 4.5"

Well Diameter: N/A



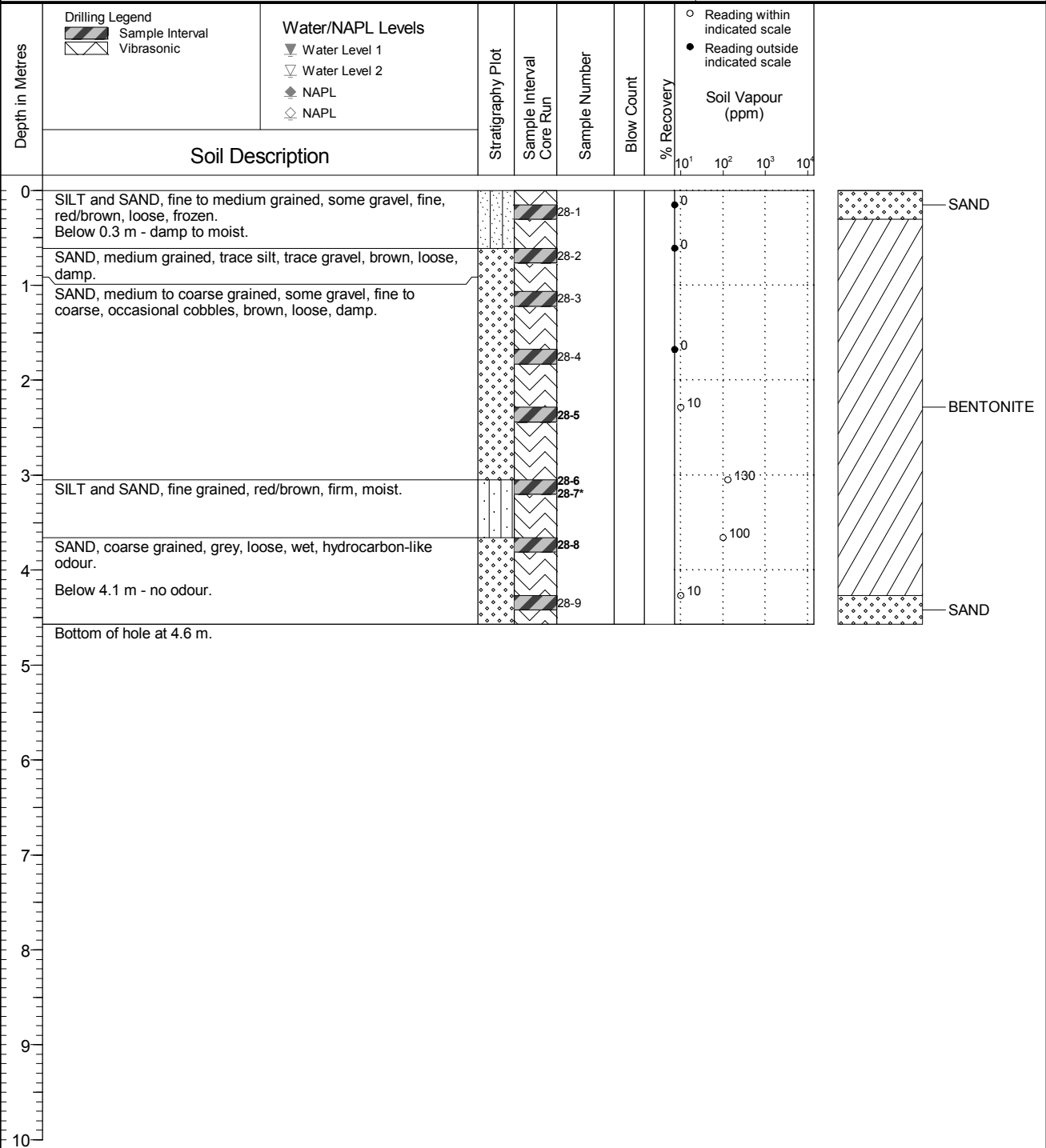
Client
Public Works and Gov't Services Canada

Location
Watson Lake Airport, Watson Lake, YT

Borehole No. : 6-BH15-28

PAGE 1 OF 1

Drilling Contractor: Blue Max Environmental	Date Monitored: n/a	Project Number: 631841
Drilling Method: Vibratory Sonic	Ground Surface Elev. (m): n/a	Borehole Logged By: MLC
Borehole Dia. (m): 0.15	Top of Casing Elev. (m): n/a	Date Drilled: 2015 12 04
Pipe/Slotted Pipe Dia. (m): none/none	Northing: 6663989.000	Easting: 509969.000
		Log Typed By: NDS



NOTES
 Bolded sample denotes sample analyzed. *denotes blind field duplicate. 28-7 is a blind field duplicate of 28-6.



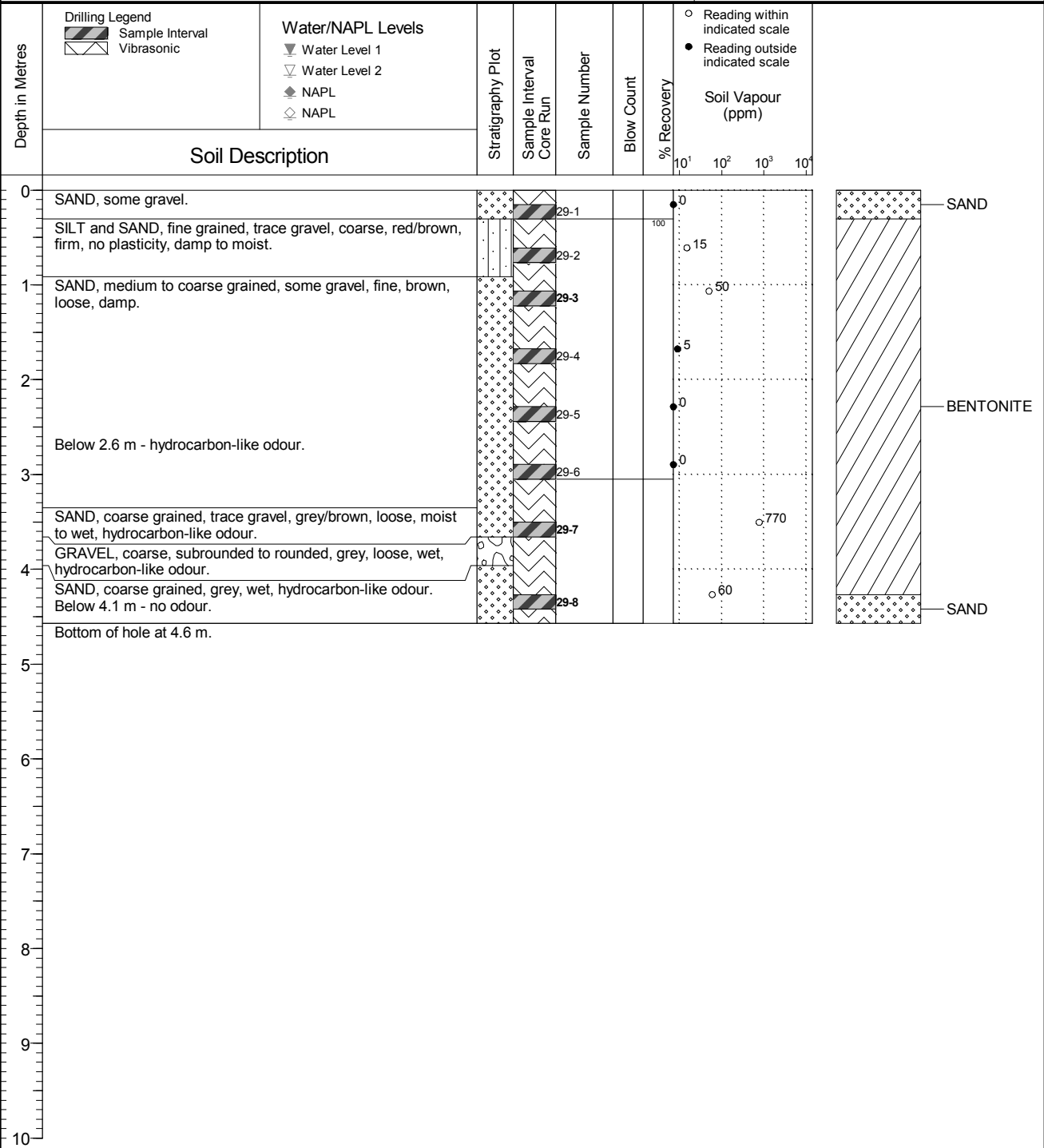
Client
Public Works and Gov't Services Canada

Location
Watson Lake Airport, Watson Lake, YT

Borehole No. : 6-BH15-29

PAGE 1 OF 1

Drilling Contractor: Blue Max Environmental	Date Monitored: n/a	Project Number: 631841
Drilling Method: Vibratory Sonic	Ground Surface Elev. (m): n/a	Borehole Logged By: MLC
Borehole Dia. (m): 0.15	Top of Casing Elev. (m): n/a	Date Drilled: 2015 12 05
Pipe/Slotted Pipe Dia. (m): none/none	Northing: 6663997.000	Easting: 509957.000
		Log Typed By: NDS



NOTES
 Bolded sample denotes sample analyzed.



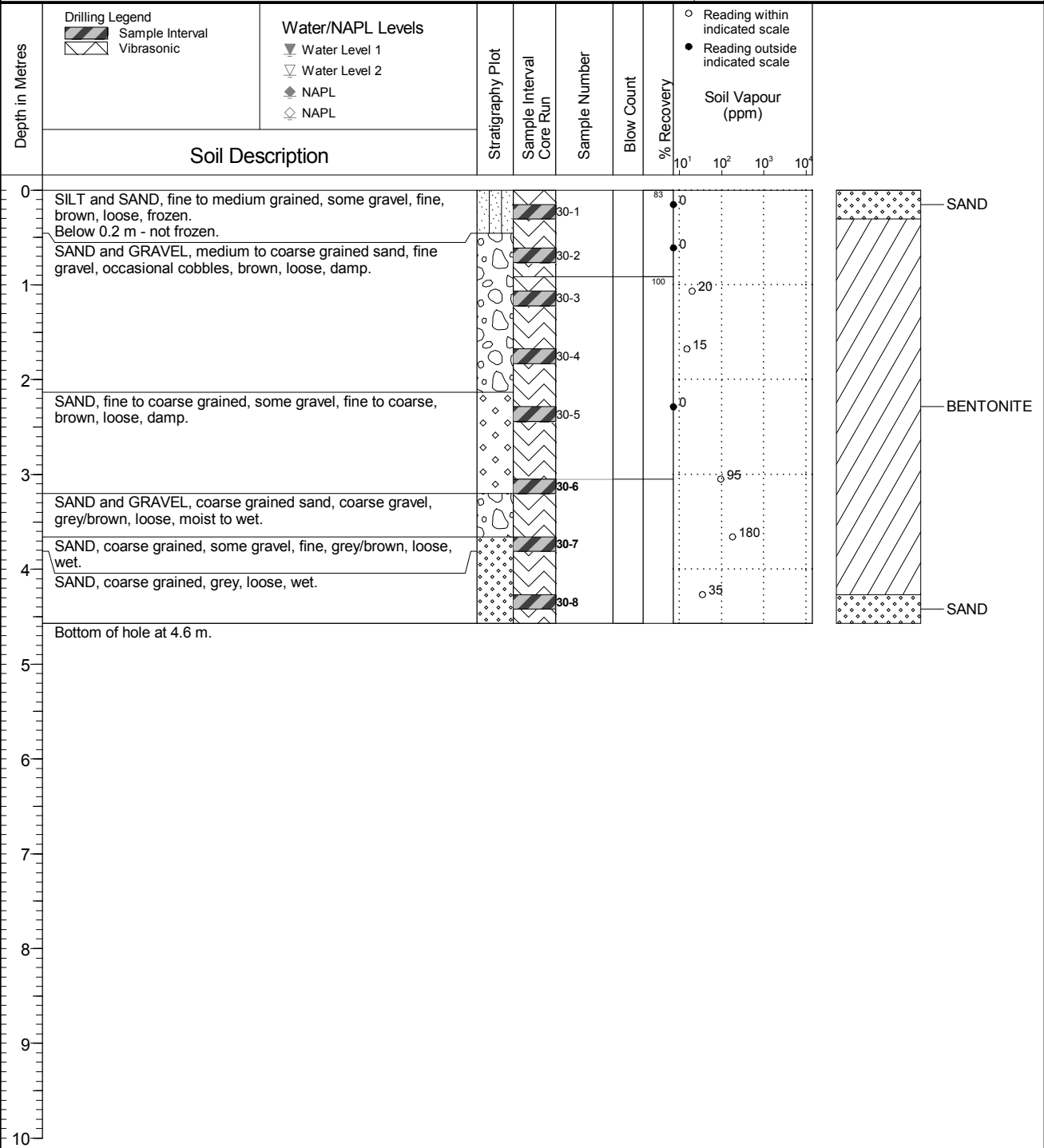
Client
Public Works and Gov't Services Canada

Location
Watson Lake Airport, Watson Lake, YT

Borehole No. : 6-BH15-30

PAGE 1 OF 1

Drilling Contractor: Blue Max Environmental	Date Monitored: n/a	Project Number: 631841
Drilling Method: Vibratory Sonic	Ground Surface Elev. (m): n/a	Borehole Logged By: MLC
Borehole Dia. (m): 0.15	Top of Casing Elev. (m): n/a	Date Drilled: 2015 12 05
Pipe/Slotted Pipe Dia. (m): none/none	Northing: 6664026.000	Easting: 509935.000
		Log Typed By: NDS



NOTES
 Bolded sample denotes sample analyzed.



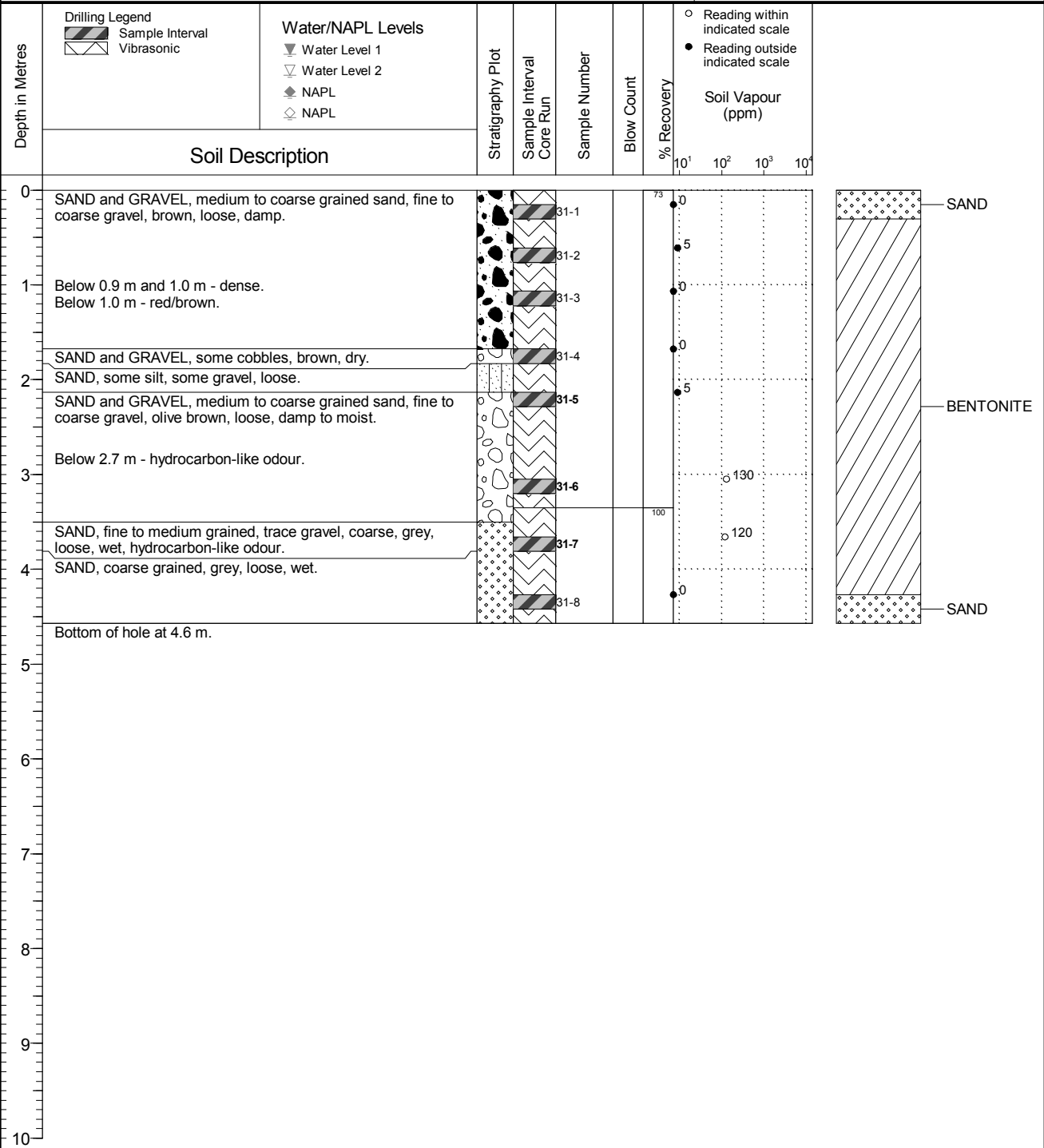
Client
Public Works and Gov't Services Canada

Location
Watson Lake Airport, Watson Lake, YT

Borehole No. : 6-BH15-31

PAGE 1 OF 1

Drilling Contractor: Blue Max Environmental	Date Monitored: n/a	Project Number: 631841
Drilling Method: Vibratory Sonic	Ground Surface Elev. (m): n/a	Borehole Logged By: MLC
Borehole Dia. (m): 0.15	Top of Casing Elev. (m): n/a	Date Drilled: 2015 12 04
Pipe/Slotted Pipe Dia. (m): none/none	Northing: 6664010.000	Easting: 509968.000
		Log Typed By: NDS



NOTES
Bolded sample denotes sample analyzed.



Client
Public Works and Gov't Services Canada

Location
Watson Lake Airport, Watson Lake, YT

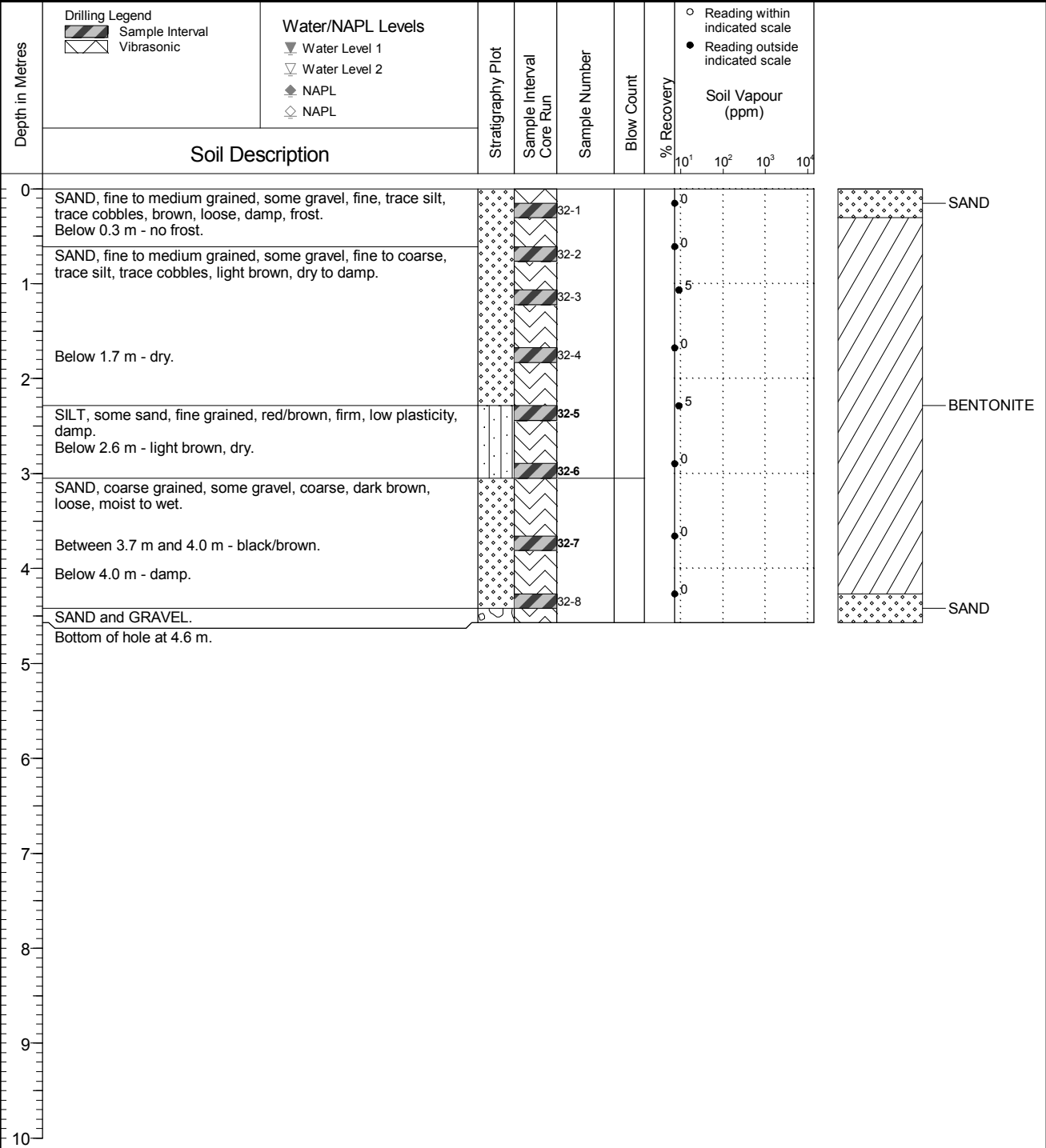
Borehole No. : 6-BH15-32

PAGE 1 OF 1

Drilling Contractor Blue Max Environmental
Drilling Method Vibratory Sonic
Borehole Dia. (m) 0.15
Pipe/Slotted Pipe Dia. (m) none/none

Date Monitored n/a
Ground Surface Elev. (m)
Top of Casing Elev. (m) n/a
Northing: 6664032.000 Easting: 509994.000

Project Number: 631841
Borehole Logged By: MLC
Date Drilled: 2015 12 04
Log Typed By: NDS



NOTES
Bolded sample denotes sample analyzed.



Client
Public Works and Gov't Services Canada

Location
Watson Lake Airport, Watson Lake, YT

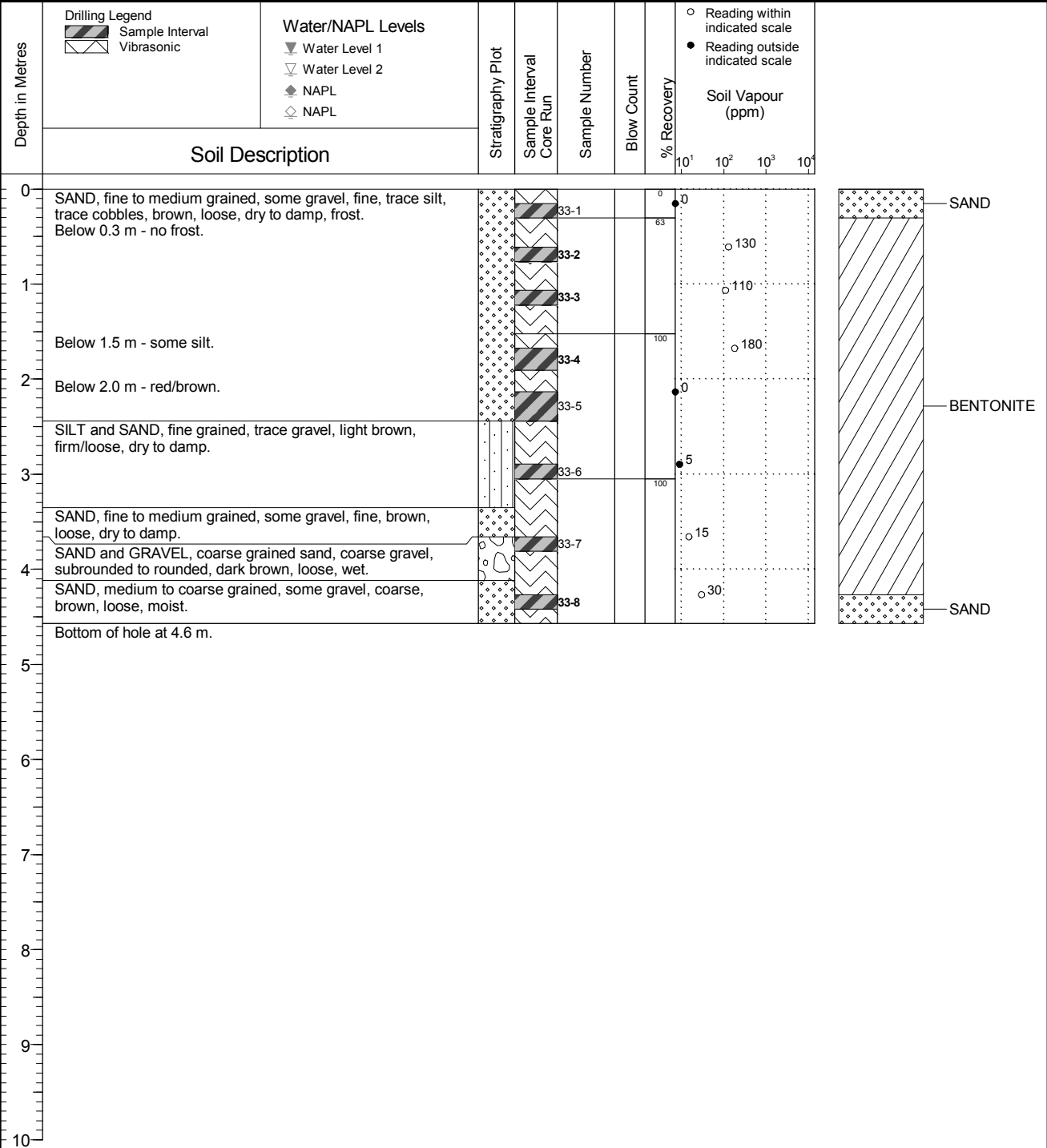
Borehole No. : 6-BH15-33

PAGE 1 OF 1

Drilling Contractor Blue Max Environmental
Drilling Method Vibratory Sonic
Borehole Dia. (m) 0.15
Pipe/Slotted Pipe Dia. (m) none/none

Date Monitored n/a
Ground Surface Elev. (m) n/a
Top of Casing Elev. (m) n/a
Northing: 6664037.000 Easting: 509985.000

Project Number: 631841
Borehole Logged By: MLC
Date Drilled: 2015 12 04
Log Typed By: NDS



NOTES
Bolded sample denotes sample analyzed.



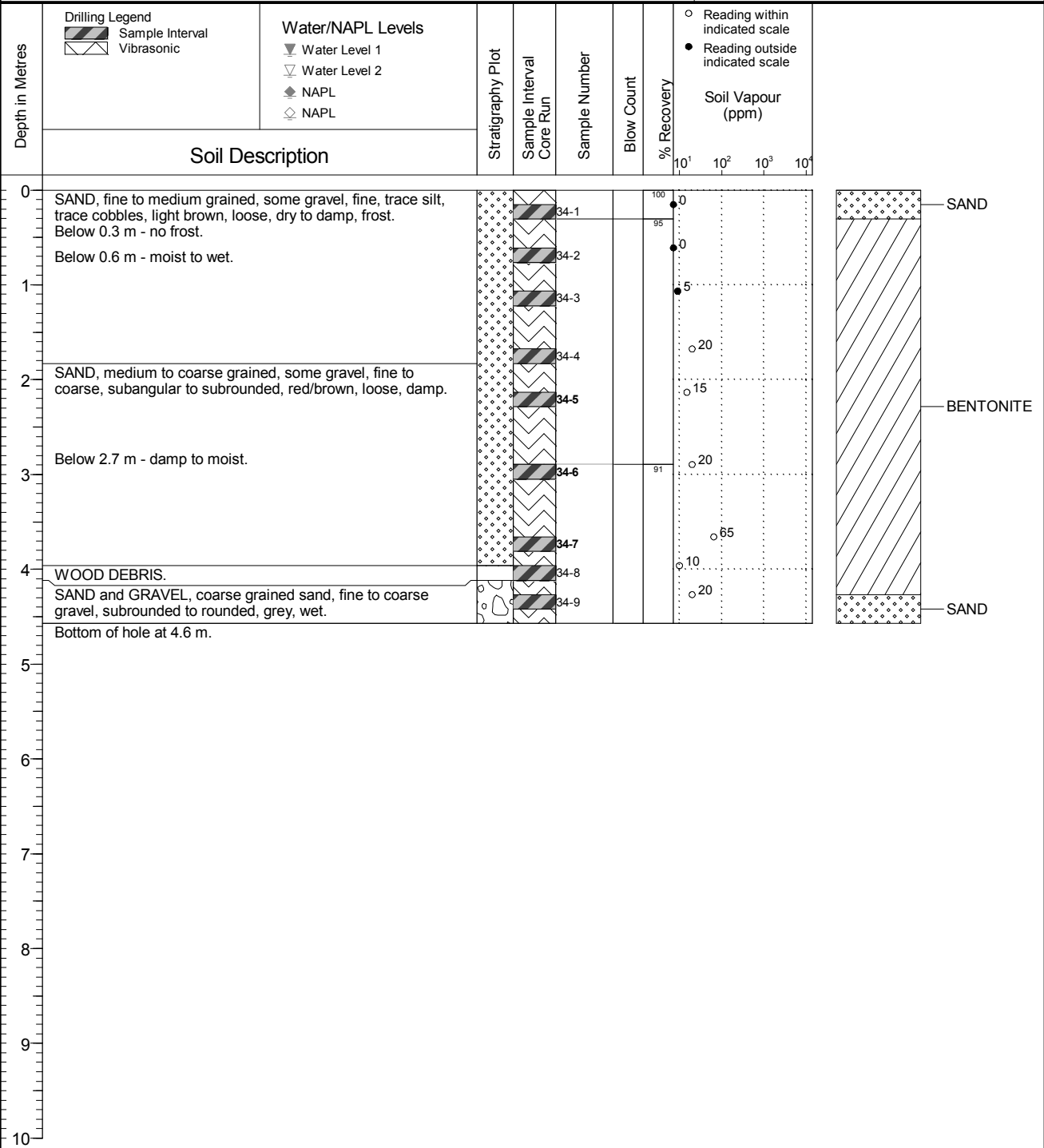
Client
Public Works and Gov't Services Canada

Location
Watson Lake Airport, Watson Lake, YT

Borehole No. : 6-BH15-34

PAGE 1 OF 1

Drilling Contractor: Blue Max Environmental	Date Monitored: n/a	Project Number: 631841
Drilling Method: Vibratory Sonic	Ground Surface Elev. (m): n/a	Borehole Logged By: MLC
Borehole Dia. (m): 0.15	Top of Casing Elev. (m): n/a	Date Drilled: 2015 12 04
Pipe/Slotted Pipe Dia. (m): none/none	Northing: 6664042.000	Easting: 509964.000
		Log Typed By: NDS



NOTES
 Bolded sample denotes sample analyzed.



Client
Public Works and Gov't Services Canada

Location
Watson Lake Airport, Watson Lake, YT

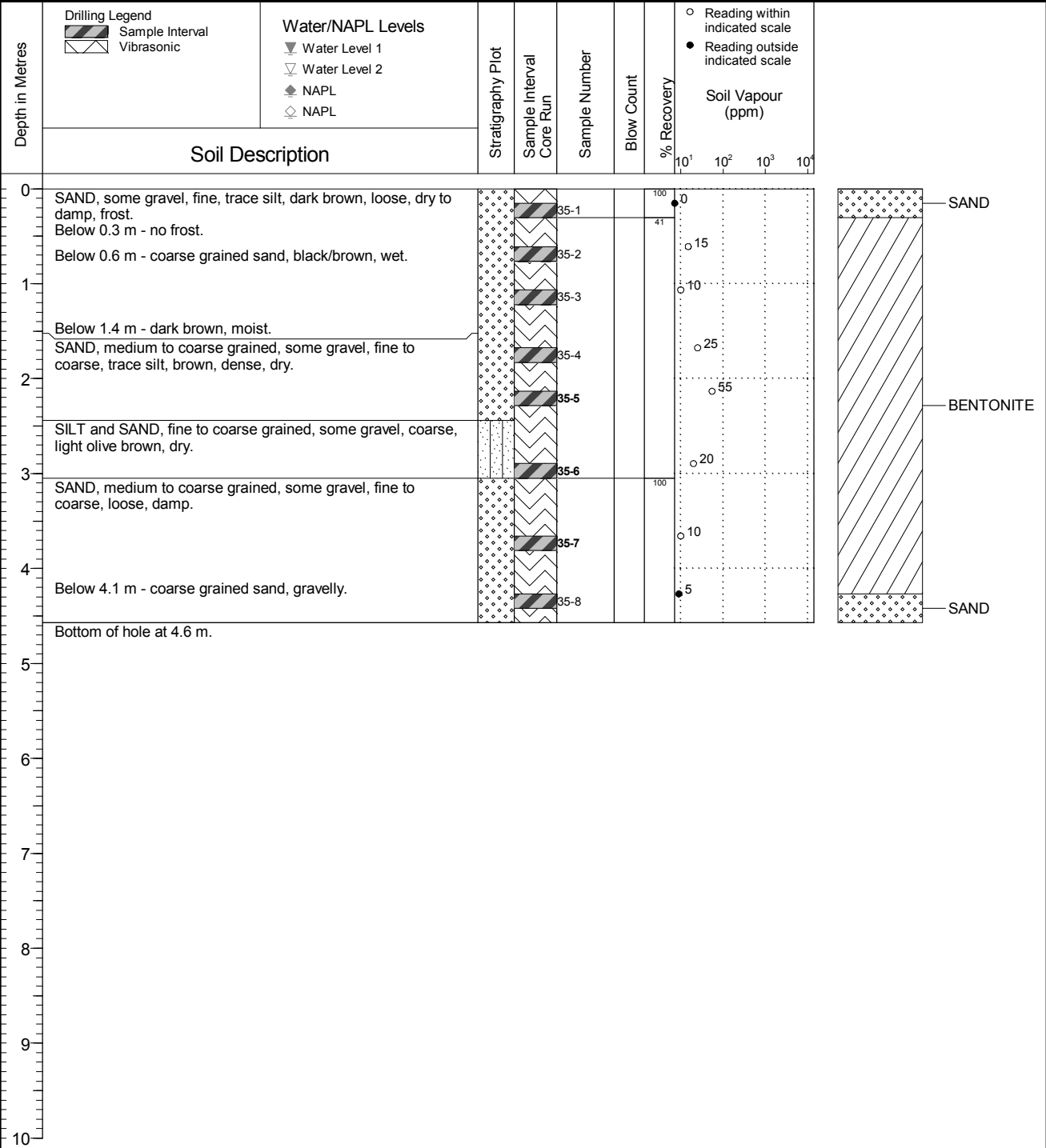
Borehole No. : 6-BH15-35

PAGE 1 OF 1

Drilling Contractor Blue Max Environmental
Drilling Method Vibratory Sonic
Borehole Dia. (m) 0.15
Pipe/Slotted Pipe Dia. (m) none/none

Date Monitored n/a
Ground Surface Elev. (m)
Top of Casing Elev. (m) n/a
Northing: 6664043.000 Easting: 509952.000

Project Number: 631841
Borehole Logged By: MLC
Date Drilled: 2015 12 04
Log Typed By: NDS



NOTES
Bolded sample denotes sample analyzed.

SUBSURFACE PROFILE				SAMPLE			Organic Vapour Rdg. PPM 0 200 400 600 800 1000	Well Completion Details
Depth (m)	Symbol	Description	Elev.	Number	Type	Recovery		
0		Ground Surface	0.0					
1		Sand medium, some gravel, trace silt, brown, loose, moist, no odour		14-1	G		15	
2			-1.8					
3								
4								
5								
6		Sand medium, some gravel, trace silt, brown, loose, moist, slight odour		14-2	G		15	
7			-2.7				15	
8		Sand coarse, trace gravel, trace silt, brown, loose, wet, slight odour		14-3	G			
9			-3.1					
10		End of Borehole						
11								
12								
13								
14								
15								
16								
17								
18								
19								
20								
21								
22								
23								
24								
25								
26								

Drilled By: GeoTech Drilling Services

Comments: Sample analysis BTEX/VPH, EPH, PAHs and metals

Drill Method: Direct Push

Hole Diameter: 4.5"

Well Diameter: 2"

SUBSURFACE PROFILE				SAMPLE			Organic Vapour Rdg. PPM 0 200 400 600 800 1000	Well Completion Details
Depth (m)	Symbol	Description	Elev.	Number	Type	Recovery		
0		Ground Surface	0.0					
0 to 1	[Symbol: Fine gravel]	Silty Sand fine, trace gravel, brown, loose, moist, no odour		15-1	G		5	
1 to 5	[Symbol: Sand]	Sand medium, some gravel, brown, loose, moist, no odour	-1.5	15-2	G		25	
5 to 7	[Symbol: Sand]	Sand coarse, some gravel, brown, loose, moist	-2.1					
7 to 10	[Symbol: Sand]	Sand coarse, some gravel, brown, loose, moist	-3.1					
10 to 11	[Symbol: Sand]	Sand coarse, some gravel, brown, loose, wet, no odour		15-3	G		15	
11 to 13	[Symbol: Sand]	Sand coarse, some gravel, brown, loose, wet, no odour	-4.0					
13 to 26		End of Borehole						

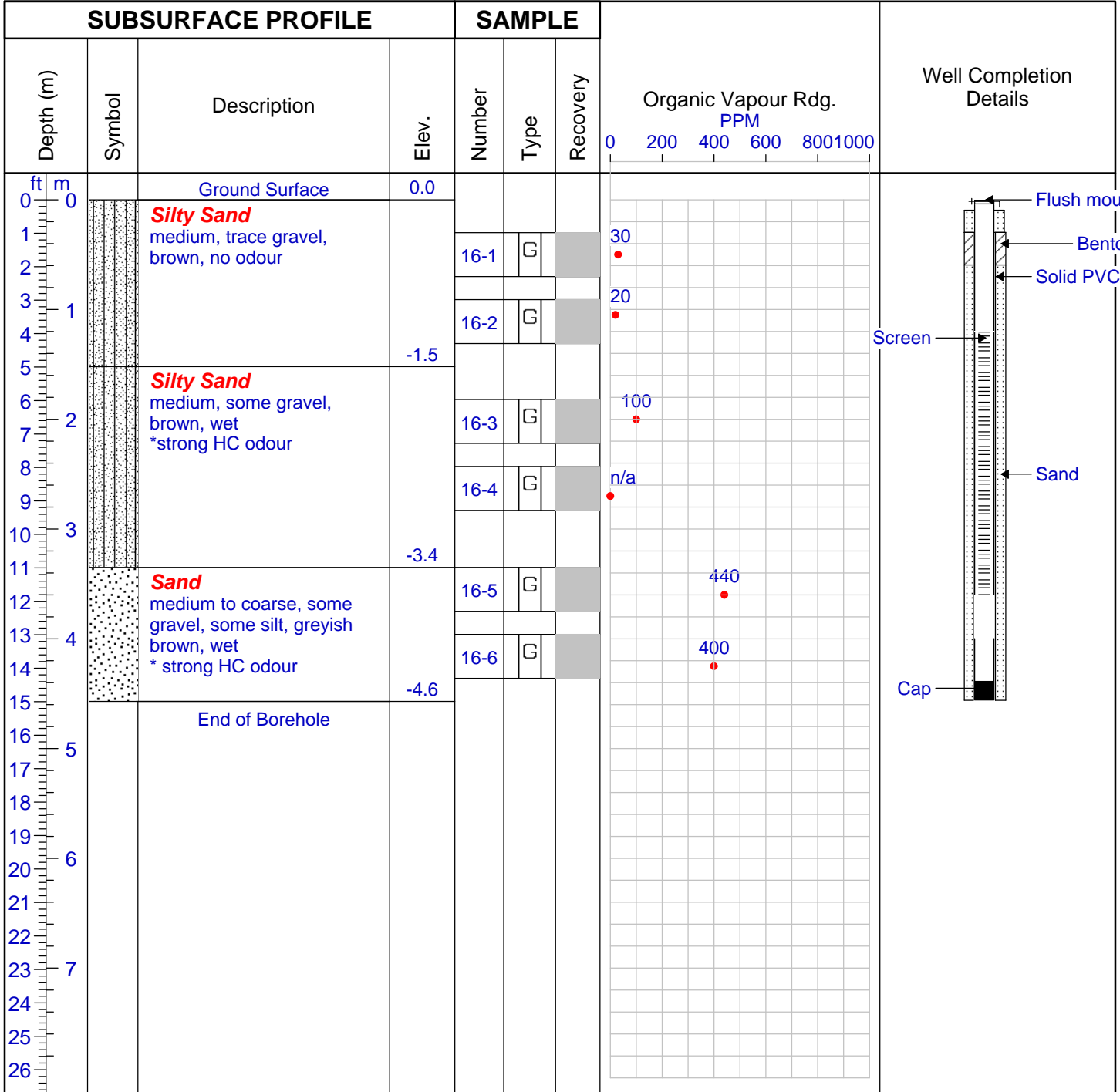
Drilled By: GeoTech Drilling Services

Comments: Sample analysis BTEX/VP, EPH, PAHs

Drill Method: Direct Push

Hole Diameter: 4.5"

Well Diameter: 2"



Drilled By: GeoTech Drilling Services

Drill Method: Direct Push

Hole Diameter: 4.5"

Well Diameter: 2"

Comments: Samples analyzed for PAHs

- Dup-15 duplicate of sample 16-6

**Franz
Environmental
Inc.**

CONSULTING ♦ ENGINEERS ♦ TECHNOLOGIES ♦

Project No: 639-0904

Borehole Log: BH09-7-17

Project: Watson Lake Supplemental Drilling

Site ID: AEC 7

Client: PWGSC/TC

Logged By: Ivy Liu

Location: Watson Lake, Yukon

Checked By: Ivy Liu

Date: Aug. 16, 2009

SUBSURFACE PROFILE				SAMPLE			Organic Vapour Rdg. PPM 0 200 400 600 800 1000	Well Completion Details
Depth (m)	Symbol	Description	Elev.	Number	Type	Recovery		
0		Ground Surface	0.0					
1	[Symbol: Sand with trace gravel]	Sand medium, trace gravel, trace silt, brown, loose, moist, no odour		17-1	G		0	
2								
3								
4				17-2	G		35	
5			-1.5					
6	[Symbol: Sand with coarse gravel]	Sand coarse, trace gravel, brown, loose, moist, no odour		17-3	G		30	
7								
8			-2.1					
9	[Symbol: Sand with coarse gravel, grey]	Sand coarse, trace gravel, grey, loose, wet *strong odour		17-4	G		180	
10								
11			-3.1					
12	[Symbol: Sand with coarse gravel, greyish brown]	Sand coarse, trace gravel, greyish brown, loose, wet *strong odour						
13								
14				17-5	G		380	
15								
16								
17				17-6	G		160	
18								
19				17-7	G		110	
20			-6.1					
21		End of Borehole						
22								
23								
24								
25								
26								

Drilled By: GeoTech Drilling Services

Drill Method: Direct Push

Hole Diameter: 4.5"

Well Diameter:

Comments: Sample analysis: Sample analysis BTEX/VPH, EPH, - PAHs, and total metals.

SUBSURFACE PROFILE				SAMPLE			Organic Vapour Rdg. PPM 0 200 400 600 800 1000	Well Completion Details
Depth (m)	Symbol	Description	Elev.	Number	Type	Recovery		
0		Ground Surface	0.0					
1	[Sand symbol]	Sand medium, some gravel, trace silt, brown, moist, no odour		18-1	G		40	
2								
3								
4	[Silty Clay symbol]	Silty Clay trace gravel, trace sand, dark brown, compacted, moist, faint odour		18-2	G		50	
5								
6								
7	[Sandy Silt symbol]	Sandy Silt trace gravel, grey, loose, wet, slight odour		18-3	G		280	
8								
9								
10								
11								
12								
13								
14	[Silty Sand symbol]	Silty Sand medium, trace gravel, brownish grey, wet, no odour		18-4	G		130	
15								
16								
17								
18								
19								
20	[Silty Sand symbol]			18-5	G		120	
21								
22								
23								
24								
25								
26								
		End of Borehole						

Drilled By: GeoTech Drilling Services

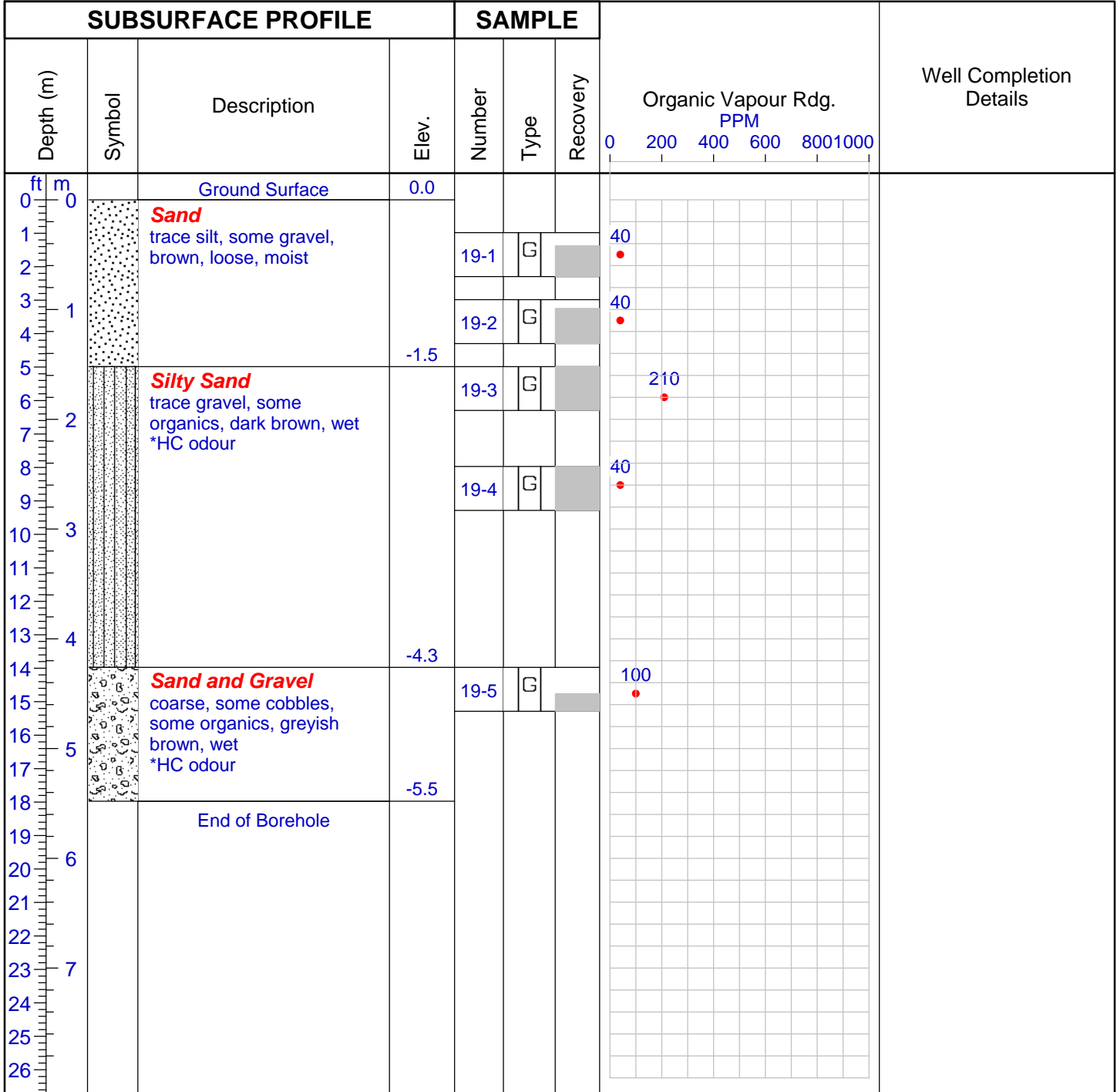
Drill Method: Direct Push

Hole Diameter: 4.5"

Well Diameter:

Comments: Dup-25 duplicate of sample 18-5

- water level @ 3 ft, Sample analysis BTEX/VPH, EPH, PAHs,



Drilled By: GeoTech Drilling Services

Drill Method: Direct Push

Hole Diameter: 4.5"

Well Diameter:

Comments: Sample analysis: Sample analysis BTEX/VPH, EPH,
- PAHs and total metals

**Franz
Environmental
Inc.**

CONSULTING ♦ ENGINEERS ♦ TECHNOLOGIES ♦

Project No: 639-0904

Borehole Log: BH09-7-20

Project: Watson Lake Supplemental Drilling

Site ID: AEC 7

Client: PWGSC/TC

Logged By: Ivy Liu

Location: Watson Lake, Yukon

Checked By: Ivy Liu

Date: Aug. 17, 2009

SUBSURFACE PROFILE				SAMPLE			Organic Vapour Rdg. PPM	Well Completion Details
Depth (m)	Symbol	Description	Elev.	Number	Type	Recovery		
0		Ground Surface	0.0					
0		Sand medium, trace gravel, light brown, moist, no odour		20-1	G		80	
1			-0.9					
1		Silty Sand medium, trace gravel, olive grey, some organics, compact, moist *strong odour		20-2	G		1650	
2			-2.1					
2		Sand medium, some gravel, trace silt, brown, moist, *slight odour		20-3	G		350	
3			-3.1					
3		Sand medium, some silt, trace gravel, reddish brown, wet, no odour		20-4	G		130	
4			-4.6					
4		Sand medium, some silt, trace gravel, reddish brown, wet, no odour		20-5	G		120	
5			-6.1					
5		Silty Sand trace gravel, reddish/grey brown, wet *slight odour		20-6	G		45	
6			-6.1					
6		End of Borehole						
7								

Drilled By: GeoTech Drilling Services

Comments: Water level @ 10 ft

Drill Method: Direct Push

- Sample analysis BTEX/VPH, EPH, PAHs and total metals

Hole Diameter: 4.5"

Well Diameter:

SUBSURFACE PROFILE				SAMPLE			Organic Vapour Rdg. PPM 0 200 400 600 800 1000	Well Completion Details
Depth (m)	Symbol	Description	Elev.	Number	Type	Recovery		
0		Ground Surface	0.0					
1	[Symbol: Sand]	Sand medium, some gravel, brown, loose, moist	-0.9	21-1	G		30	
2								
3	[Symbol: Sand]	Sand medium, some gravel, trace silt, greyish brown, moist *slight odour	-2.4	21-2	G		0	
4								
5				21-3	G		35	
6	[Symbol: Sand]	Sand coarse, some gravel, some organics, greyish brown, loose, wet, no odour	-4.3	21-4	G		85	
7								
8	[Symbol: Sand]	Sand medium, some gravel, some organics, dark greyish brown, loose, wet *slight odour	-5.5	21-5	G		50	
9								
10	[Symbol: Sand and Gravel]	Sand and Gravel coarse, some organics, brownish grey, loose, wet *slight odour	-6.1	21-6	G		80	
11								
12		End of Borehole						
13								
14								
15								
16								
17								
18								
19								
20								
21								
22								
23								
24								
25								
26								

Drilled By: GeoTech Drilling Services

Drill Method: Direct Push

Hole Diameter: 4.5"

Well Diameter:

Comments: Water level @ 8 ft

- Sample analysis BTEX/VPH, EPH, PAHs, and total metals

SUBSURFACE PROFILE				SAMPLE			Organic Vapour Rdg. PPM 0 200 400 600 800 1000	Well Completion Details
Depth (m)	Symbol	Description	Elev.	Number	Type	Recovery		
0		Ground Surface	0.0					
1		Sand and Gravel coarse, brown, loose, dry to moist		22-1	G		30	
2								
3		*1-2ft trace silt, trace clay	-1.2					
4		Silty Sand trace gravel, semi compact, dark brown, dry to moist		22-2	G		110	
5								
6								
7								
8		*7-8ft silty sand and gravel		22-3	G		75	
9								
10		*9-10ft very compact silty clay layer	-3.1	22-4	G		180	
11		Sand medium to coarse, trace gravel						
12								
13				22-5	G		70	
14								
15								
16								
17		*16-17ft fine sand						
18				22-6	G		30	
19								
20			-6.1					
21		End of Borehole						
22								
23								
24								
25								
26								

Water Level

Drilled By: GeoTech Drilling Services

Comments: Sample Analysis: BTEX/VPH, EPH, PAHs

Drill Method: Direct Push

Hole Diameter: 4.5"

Well Diameter: N/A

**Franz
Environmental
Inc.**

CONSULTING ♦ ENGINEERS ♦ TECHNOLOGIES ♦

Project No: 639-0904

Borehole Log: BH09-7-23

Project: Watson Lake Supplemental Drilling

Site ID: 7

Client: PWGSC/TC

Logged By: Chelsea Dupuis

Checked By: Ivy Liu

Location: Watson Lake, Yukon

Date: Oct. 21, 2009

SUBSURFACE PROFILE				SAMPLE			Organic Vapour Rdg. PPM 0 200 400 600 800 1000	Well Completion Details
Depth (m)	Symbol	Description	Elev.	Number	Type	Recovery		
0		Ground Surface	0.0					Water level
1		Sand and Gravel medium to coarse, brown, loose, dry to moist	-0.9					
2		Silty Clay dark brown, loose, moist *5-6ft grey in color	-2.1	23-1	G		20	
3		Sand and Gravel coarse, trace clay, red/brown, loose, wet	-3.1	23-2	G		85	
4		Sand medium to coarse, trace gravel, grey, loose, wet	-4.6	23-3	G		0	
5		End of Borehole		23-4	G		5	
6								
7								
8								
9								

Drilled By: GeoTech Drilling Services

Comments: Samples analyzed for PAHs and EPHs

Drill Method: Direct Push

Hole Diameter: 4.5"

Well Diameter: N/A

SUBSURFACE PROFILE				SAMPLE			Organic Vapour Rdg. PPM 0 200 400 600 800 1000	Well Completion Details
Depth (m)	Symbol	Description	Elev.	Number	Type	Recovery		
0		Ground Surface	0.0					
1		Sand and Gravel medium to coarse, brown, loose, dry to moist		24-1	G		20	
2								
3		*3-4ft fine sand and pebbles, grey, loose, dry		24-2	G		15	
4								
5		*7ft HC odour continues down, grey in color		24-3	G		100	
6								
7								
8								
9								
10		Refusal due to heave	-3.1					
11		End of Borehole						
12								
13								
14								
15								
16								
17								
18								
19								
20								
21								
22								
23								
24								
25								
26								

Water Level

Drilled By: GeoTech Drilling Services
 Drill Method: Direct Push
 Hole Diameter: 4.5"
 Well Diameter: N/A

Comments: Sample Analysis: BTEX/VP, EPH, PAHs
 -

**Franz
Environmental
Inc.**

CONSULTING ♦ ENGINEERS ♦ TECHNOLOGIES ♦

Project No: 639-0904

Borehole Log: BH09-7-25

Project: Watson Lake Supplemental Drilling

Site ID: 7


Client: PWGSC/TC

Logged By: Chelsea Dupuis

Location: Watson Lake, Yukon

Checked By: Ivy Liu

Date: Oct. 21, 2009

SUBSURFACE PROFILE				SAMPLE			Organic Vapour Rdg. PPM 0 200 400 600 800 1000	Well Completion Details	
Depth (m)	Symbol	Description	Elev.	Number	Type	Recovery			
0		Ground Surface	0.0					 Water Level	
1		Sand and Gravel medium to coarse, brown, loose, dry to moist							
2									
3									
4					25-1	G			30
5									
6		6-7ft coarse sand and clay layer, brown, wet, semi compacted *8ft grey in color							
7					25-2	G			20
8									15
9		*8-14ft HC odour							
10					25-3	G			10
11									
12				25-4	G		10		
13									
14									
15		Refusal due to heave	-4.6	25-5	G		10		
16		End of Borehole							
17									
18									
19									
20									
21									
22									
23									
24									
25									
26									

Drilled By: GeoTech Drilling Services

Comments: Sample Analysis EPH and PAHs

Drill Method: Direct Push

Hole Diameter: 4.5"

Well Diameter: N/A

Project No: 639-0904 **Borehole Log: BH09-7-26**
Project: Watson Lake Supplemental Drilling **Site ID: 7**
Client: PWGSC/TC **Logged By: Chelsea Dupuis**
Location: Watson Lake, Yukon **Checked By: Ivy Liu**
Date: Oct. 21, 2009

SUBSURFACE PROFILE				SAMPLE			Organic Vapour Rdg. PPM 0 200 400 600 800 1000	Well Completion Details
Depth (m)	Symbol	Description	Elev.	Number	Type	Recovery		
0		Ground Surface	0.0					Water Level
1		Sand and Gravel medium to coarse, brown, loose, dry to moist						
2								
3								
4		*HC odour from 4-8ft	-1.5	26-1	G		15	
5		Sand and Gravel fine to medium, trace clay, grey, loose, wet					45	
6								
7								
8			-2.4					
9		Sand coarse, trace gravel, grey, loose, wet					35	
10								
11		*Refusal due to heave	-3.1	26-3	G			
12		End of Borehole						
13								
14								
15								
16								
17								
18								
19								
20								
21								
22								
23								
24								
25								
26								

Drilled By: GeoTech Drilling Services
 Drill Method: Direct Push
 Hole Diameter: 4.5"
 Well Diameter: N/A

Comments: Samples analysis PAHs and EPH
 - Dup 24 duplicate of sample 26-1

**Franz
Environmental
Inc.**

CONSULTING ♦ ENGINEERS ♦ TECHNOLOGIES ♦

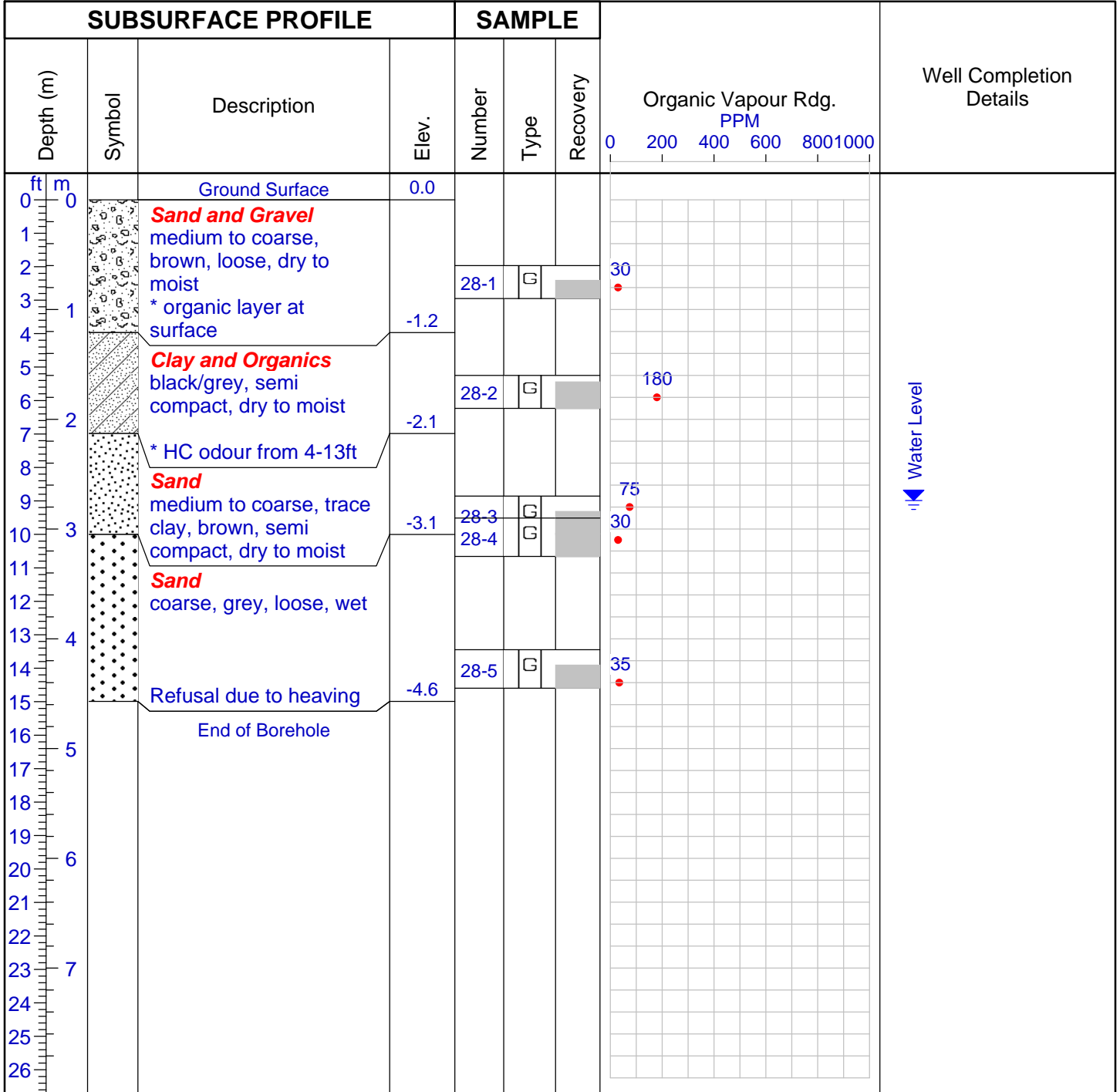
Project No: 639-0904 **Borehole Log: BH09-7-27**

Project: Watson Lake Supplemental Drilling **Site ID: 7**
Client: PWGSC/TC **Logged By: Chelsea Dupuis**
Location: Watson Lake, Yukon **Checked By: Ivy Liu**
Date: Oct. 21, 2009

SUBSURFACE PROFILE				SAMPLE			Organic Vapour Rdg. PPM 0 200 400 600 800 1000	Well Completion Details		
Depth (m)	Symbol	Description	Elev.	Number	Type	Recovery				
0		Ground Surface	0.0					Water Level		
1		Sand and Gravel medium to coarse, grey, loose, dry to moist *top 1ft organics		27-1	G		25			
2										
3										
4										
5										
6		*6-13ft HC odour and olive brown color		27-2	G		10			
7										
8										
9										
10				27-3	G		140			
11										
12										
13				27-4	G		30			
14										
15		Refusal due to heaving and large rocks	-4.6	27-5	G		560			
16		End of Borehole								
17										
18										
19										
20										
21										
22										
23										
24										
25										
26										

Drilled By: GeoTech Drilling Services
 Drill Method: Direct Push
 Hole Diameter: 4.5"
 Well Diameter: N/A

Comments: Sample Analysis: BTEX/VPH, EPH, PAHs



Drilled By: GeoTech Drilling Services

Comments: Sample Analysis: BTEX/VPH, EPH, PAHs

Drill Method: Direct Push

Hole Diameter: 4.5"

Well Diameter: N/A

SUBSURFACE PROFILE				SAMPLE			Organic Vapour Rdg. PPM 0 200 400 600 800 1000	Well Completion Details	
Depth (m)	Symbol	Description	Elev.	Number	Type	Recovery			
0		Ground Surface	0.0					Water Level	
1		Sand and Gravel medium to coarse, brown, loose, dry to moist *surface layer of organics *large granite boulders at 4ft *5-6ft grey color and HC odour							
2									
3				29-2	G				30
4									
5									
6									
7			-2.1	29-1	G		25		
8		Refusal due to buried wood debris							
9		End of Borehole							
10									
11									
12									
13									
14									
15									
16									
17									
18									
19									
20									
21									
22									
23									
24									
25									
26									

Drilled By: GeoTech Drilling Services

Comments: Sample Analysis: EPH, PAHs

Drill Method: Direct Push

Hole Diameter: 4.5"

Well Diameter: N/A

SUBSURFACE PROFILE				SAMPLE			Organic Vapour Rdg. PPM 0 200 400 600 800 1000	Well Completion Details				
Depth (m)	Symbol	Description	Elev.	Number	Type	Recovery						
0		Ground Surface	0.0					Water Level				
1		Sand and Gravel medium to coarse, trace clay, brown, loose, dry to moist		30-1	G		35					
2												
3												
4												
5												
6												
7												
8												
9							30-2		G		170	
10					*10-15ft HC odour and grey in color							
11												
12							30-3		G			230
13												
14					Refusal due to heaving		30-4		G		140	
15						-4.6						
16		End of Borehole										
17												
18												
19												
20												
21												
22												
23												
24												
25												
26												

Drilled By: GeoTech Drilling Services

Comments: Sample Analysis: BTEX/VPH, EPH, PAHs

Drill Method: Direct Push

Hole Diameter: 4.5"

Well Diameter: N/A

SUBSURFACE PROFILE				SAMPLE			Organic Vapour Rdg. PPM 0 200 400 600 800 1000	Well Completion Details			
Depth (m)	Symbol	Description	Elev.	Number	Type	Recovery					
0		Ground Surface	0.0					Water Level			
1		<p>Sand and Gravel fine to medium, brown, loose, dry to moist *surface layer of organics *trace clay at 1-2ft</p> <p>*8-17ft HC odour *9ft and deeper, grey in color</p>		31-1	G		45				
2											
3											
4											
5											
6											
7											
8							31-2		G		250
9											
10											
11											
12											
13											
14				31-3	G		45				
15											
16											
17											
18											
19											
20			-6.1	31-4	G		45				
21		End of Borehole									
22											
23											
24											
25											
26											

Drilled By: GeoTech Drilling Services
 Drill Method: Direct Push
 Hole Diameter: 4.5"
 Well Diameter: N/A

Comments: Sample Analysis: BTEX/VPH, EPH, PAHs
 - Dup-25 duplicate of sample 31-2



Project No: 639-1005 **Borehole Log: 7-BH11-32**
Project: Post Remedial Drilling **Well ID:** 7-MW11-32
Client: PWGSC **Logged by:** CD
Site Location: AEC 7 **Checked By:** MR

SUBSURFACE PROFILE			SAMPLE		VOC Concentration					Well Completion Details	
Depth	Symbol	Description	Number	Recovery(%)	Type	10	30	50	70		90
0		Ground Surface									
1		Heavy Organics, some Silt									
2		trace Fine Sand, trace Cobble, brown, loose, moist, rootlet and wood fragments									
3			32-1		SS			50			
4			32-2			10					
5			32-3		SS		35				
6		Coarse to Fine Sand and Gravel									
7		brown, loose, wet at 1.4m									
8			32-4		SS			40			
9											
10			32-5		SS	0					
11											
12											
13			32-6		SS			45			
14		Medium to Coarse Sand									
15		trace Fine Sand, trace Cobble, brown, loose, wet	32-7		SS		30				
16											
17											
18											
19											
20			32-8		SS		30				
21											
22		End of Borehole									
23											
24											
25											

Drilled By: Geotech Drilling Services

Ground Elevation: 0

Hole Diameter: 4"

Drill Method: ODEX/ Air Rotary

Well Diameter: 2"

Drill Date: Feb. 9 2011

Sheet: 1 of 1



Project No: 639-1005 **Borehole Log: 7-BH11-33**
Project: Post Remedial Drilling **Well ID:** 7-MW11-33
Client: PWGSC **Logged by:** CD
Site Location: AEC 7 **Checked By:** MR

SUBSURFACE PROFILE			SAMPLE		VOC Concentration					Well Completion Details	
Depth	Symbol	Description	Number	Recovery(%)	Type	10	30	50	70		90
0		Ground Surface									
1		<i>Fine to Coarse Sand and Gravel</i> grey, loose, wet									
3		*1-2m slight odour	33-1		SS	10					
5			33-2		SS			65			
8			33-3		SS		35				
10			33-4		SS					110	
13			33-5		SS/ DUP1			50			
15			33-6		SS			40			
18			33-7		SS		15				
20			33-8		SS			35			
22		End of Borehole									

Drilled By: Geotech Drilling Services

Ground Elevation: 0

Hole Diameter: 4"

Drill Method: ODEX/ Air Rotary

Well Diameter: 2"

Drill Date: Feb. 9 2011

Sheet: 1 of 1



Project No: 639-1005 **Borehole Log: 7-BH11-34**
Project: Post Remedial Drilling **Well ID:** 7-MW11-34
Client: PWGSC **Logged by:** CD
Site Location: AEC 7 **Checked By:** MR

SUBSURFACE PROFILE			SAMPLE		VOC Concentration					Well Completion Details		
Depth	Symbol	Description	Number	Recovery(%)	Type	10	30	50	70		90	
0		Ground Surface										
1		Fine to Coarse Gravelly Sand grey, loose, dry	34-1		SS			40				
2												
3												
4												
5												
6												
7		Medium to Coarse Sand and Gravel black, loose, wet *3-3.5m possible staining *3-5m brown colour *3.5-4.2m slight odour	34-2		SS			35				
8												
9												
10												
11												
12		Fine to Medium Sand brown, loose, wet	34-3		SS			35				
13												
14												
15												
16												
17												
18												
19												
20												
21		End of Borehole										
22												
23												
24												
25												

Drilled By: Geotech Drilling Services
 Drill Method: ODEX/ Air Rotary
 Drill Date: Feb. 25 2011

Ground Elevation: 0

Hole Diameter: 4"
 Well Diameter: 2"
 Sheet: 1 of 1



Project No: 639-1005 **Borehole Log: 7-BH11-35**
Project: Post Remedial Drilling **Well ID:** 7-MW11-35
Client: PWGSC **Logged by:** CD
Site Location: AEC 7 **Checked By:** MR

SUBSURFACE PROFILE			SAMPLE		VOC Concentration					Well Completion Details	
Depth	Symbol	Description	Number	Recovery(%)	Type	10	30	50	70		90
0		Ground Surface									
0-16		Fine to Coarse Sand and Gravel grey, loose, dry									
4			35-1		SS	20					
8			35-A					90			
11		Fine to Coarse Sand, some Gravel brown, loose, wet	35-2		SS	15					
13			35-3		SS DUP2	20					
15			35-4		SS	5					
17		Fine to Medium Sand trace Gravel, brown, loose, wet *5.8-6m no Gravel	35-5		SS	10					
19			35-6		SS	10					
20		End of Borehole									
21											
22											
23											
24											
25											

Drilled By: Geotech Drilling Services

Ground Elevation: 0

Hole Diameter: 4"

Drill Method: ODEX/ Air Rotary

Well Diameter: 2"

Drill Date: March 1 2011

Sheet: 1 of 1



Project No: 639-1005 **Borehole Log: 7-BH11-36**
Project: Post Remedial Drilling **Well ID:** 7-MW11-36
Client: PWGSC **Logged by:** CD
Site Location: AEC 7 **Checked By:** MR

SUBSURFACE PROFILE			SAMPLE			VOC Concentration					Well Completion Details
Depth	Symbol	Description	Number	Recovery(%)	Type	10	30	50	70	90	
0		Ground Surface									
0-16		Fine to Coarse Sand and Gravel grey, loose, dry									
3			36-A		Bucket			60			
4			36-1		SS	15					
7			36-2		SS			45			
8			36-3		SS			45			
10			36-5		SS			40			
11		*3-3.5m black staining *3.5-4.8m brown colour	36-B		SS			40			
13			36-6		SS			35			
15			36-7		SS			45			
16		Fine to Medium Sand brown, loose, wet, possible odour	36-8		SS			35			
19			36-9		SS			45			
20		End of Borehole									
21											
22											
23											
24											
25											

Drilled By: Geotech Drilling Services

Ground Elevation: 0

Hole Diameter: 4"

Drill Method: ODEX/ Air Rotary

Well Diameter: 2"

Drill Date: March 2 2011

Sheet: 1 of 1



Project No: 639-1005 **Borehole Log: 7-BH11-37**
Project: Post Remedial Drilling **Well ID:** Borehole
Client: PWGSC **Logged by:** CD
Site Location: AEC 7 **Checked By:** MR

SUBSURFACE PROFILE			SAMPLE			VOC Concentration					Well Completion Details
Depth	Symbol	Description	Number	Recovery(%)	Type	10	30	50	70	90	
0		Ground Surface									
1		Fine to Coarse Sand and Gravel									
2		grey, loose, dry									
3											
4											
5			37-1		SS		20				
6											
7			37-2		SS		20				
8		*2.4-3m slight HC odour									
9			37-3		SS			30			
10											
11		*3.5-4.3m strong HC odour	37-4		SS			30			
12											
13			37-5		SS			35			
14		*no odour past 4.3m									
15			37-6		SS			30			
16											
17			37-7		SS					7050	
18		End of Borehole									
19											
20											
21											
22											
23											
24											
25											

Drilled By: Geotech Drilling Services Ground Elevation: 0 Hole Diameter: 4"
Drill Method: ODEX/ Air Rotary Well Diameter:
Drill Date: March 3 2011 Sheet: 1 of 1



Project No: 639-1005 **Borehole Log: 7-BH11-38**
Project: Post Remedial Drilling **Well ID:** 7-MW11-38
Client: PWGSC **Logged by:** CD
Site Location: AEC 7 **Checked By:** MR

SUBSURFACE PROFILE			SAMPLE		VOC Concentration					Well Completion Details		
Depth	Symbol	Description	Number	Recovery(%)	Type	10	30	50	70		90	
0		Ground Surface										
1		Fine to Coarse Sand and Gravel grey, loose, dry *2.4-3m wet and brown colour	38-A		Bucket	15						
2												
3				38-1		SS	0					
4												
5				38-2		SS	15					
6												
7				38-3		SS						
8												
9			38-4		SS	15						
10												
11			38-5		SS	15						
12		Fine to Coarse Sand trace Gravel, grey brown, loose, wet	38-6		SS	5						
13												
14				38-7		SS	15					
15												
16			38-8		SS	20						
17												
18												
19												
20		End of Borehole			DUP3							
21												
22												
23												
24												
25												

Drilled By: Geotech Drilling Services
 Drill Method: ODEX/ Air Rotary
 Drill Date: March 3 2011

Ground Elevation: 0

Hole Diameter: 4"
 Well Diameter: 2"
 Sheet: 1 of 1



Project No: 639-1005 **Borehole Log: 7-BH11-39**
Project: Post Remedial Drilling **Well ID:** Borehole
Client: PWGSC **Logged by:** CD
Site Location: AEC 7 **Checked By:** MR

SUBSURFACE PROFILE			SAMPLE		VOC Concentration					Well Completion Details	
Depth	Symbol	Description	Number	Recovery(%)	Type	10	30	50	70		90
0		Ground Surface									
1		Fine to Coarse Sand and Gravel grey, loose, dry									
2											
3											
4											
5			39-1		SS		30				
6											
7			39-2		SS						
8											
9		Medium to Coarse Gravely Sand grey, loose, wet *2.4-4.3m HC odour	39-3		SS	0					
10											
11			39-4		SS		20				
12											
13		*3.6-4.2m slight odour	39-5		SS	10					
14											
15			39-6		SS	5					
16											
17		*4.8-5.5m odour	39-7		SS	0					
18					DUP4						
19			39-8		SS		20				
20											
21		End of Borehole									
22											
23											
24											
25											

Drilled By: Geotech Drilling Services Ground Elevation: 0 Hole Diameter: 4"
Drill Method: ODEX/ Air Rotary Well Diameter:
Drill Date: March 3 2011 Sheet: 1 of 1



Project No: 639-1005 **Borehole Log: 7-BH11-40**
Project: Post Remedial Drilling **Well ID:** 7-MW11-40
Client: PWGSC **Logged by:** CD
Site Location: AEC 7 **Checked By:** MR

SUBSURFACE PROFILE			SAMPLE		VOC Concentration					Well Completion Details	
Depth	Symbol	Description	Number	Recovery(%)	Type	10	30	50	70		90
0		Ground Surface									
1		Silt and Fine to Coarse Sand trace Cobbles, dark brown, semi-compact, moist									
2											
3											
4											
5			40-1		SS DUP5			40			
6											
7			40-2		SS			45			
8											
9		Fine to Coarse Sand and Gravel brown, loose, wet	40-3		SS			45			
10											
11			40-4		SS				50		
12											
13			40-5		SS			35			
14											
15			40-6		SS			45			
16			40-7		SS			45			
17											
18		*5.2-5.6m trace Gravel	40-8		SS						
19			40-9		SS			35			
20											
21		End of Borehole									
22											
23											
24											
25											

Drilled By: Geotech Drilling Services

Ground Elevation: 0

Hole Diameter: 4"

Drill Method: ODEX/ Air Rotary

Well Diameter: 2"

Drill Date: March 4 2011

Sheet: 1 of 1



Project No: 639-1005 **Borehole Log: 7-BH11-41**
Project: Post Remedial Drilling **Well ID:** 7-MW11-41
Client: PWGSC **Logged by:** CD
Site Location: AEC 7 **Checked By:** MR

SUBSURFACE PROFILE			SAMPLE		VOC Concentration					Well Completion Details	
Depth	Symbol	Description	Number	Recovery(%)	Type	10	30	50	70		90
0		Ground Surface									
1		Silt and Fine to Coarse Sand									
2		trace Cobbles, dark brown, semi-compact, moist									
3											
4											
5			41-1		SS			35			
6											
7			41-2		SS			45			
8											
9		Fine to Coarse Sand and Gravel	41-3		SS			45			
10		brown, loose, wet									
11			41-4		SS	10					
12											
13			41-5		SS			40			
14											
15			41-6		SS			35			
16											
17			41-A		Bucket			35			
18		*5.2-5.6m trace Gravel									
19											
20											
21		End of Borehole									
22											
23											
24											
25											

Drilled By: Geotech Drilling Services

Ground Elevation: 0

Hole Diameter: 4"

Drill Method: ODEX/ Air Rotary

Well Diameter: 2"

Drill Date: March 4 2011

Sheet: 1 of 1



Project No: 639-1005 **Borehole Log: 7-BH11-42**
Project: Post Remedial Drilling **Well ID:** 7-MW11-42
Client: PWGSC **Logged by:** CD
Site Location: AEC 7 **Checked By:** MR

SUBSURFACE PROFILE			SAMPLE		VOC Concentration					Well Completion Details	
Depth	Symbol	Description	Number	Recovery(%)	Type	10	30	50	70		90
0		Ground Surface									
1		<i>Fine to Coarse Sand and Gravel</i> brown, loose, dry	42-A		Bucket	15					
2											
3											
4		*1.8-6m dark grey	42-1		SS	15					
5											
6											
7			42-2		SS	10					
8											
9		*2.4-3m moist	42-3		SS			50			
10											
11			42-4		SS		35				
12		*3-6m wet									
13			42-5		SS DUP9						
14											
15			42-6		SS	20					
16											
17											
18											
19			42-7		SS		35				
20											
21		End of Borehole									
22											
23											
24											
25											

Drilled By: Geotech Drilling Services
 Drill Method: ODEX/ Air Rotary
 Drill Date: March 5 2011

Ground Elevation: 0

Hole Diameter: 4"
 Well Diameter: 2"
 Sheet: 1 of 1



Project No: 639-1302 **Borehole Log: MW 01-7-1**

Project: Watson Lake AEC 7

Well ID:

Client: PWGSC

Logged by: CMC

Site Location: Watson Lake Airport

Checked By: MC

SUBSURFACE PROFILE				SAMPLE		VOC Concentration					Well Completion Details
Depth	Symbol	Description	Number	Recovery(%)	Type	10	30	50	70	90	
0		Ground Surface									
1		SAND Sand, trace gravel, cobables, brown, dry, compact	SA-1			0.0					
2											
3											
4			SA-2			1.9					
5		Trace gravel @ 5 ft									
6		Moist @ 6 ft	SA-3			2.2					
7											
8											
9			SA-4			2.7					
10		Wet @ 10.5 ft									
11			SA-5			11.2					
12											
13		SAND Sand, grey, medium, wet, loose	SA-6				25.4				
14											
15											
16			SA-7			4.3					
17		Coarse @ 17.5 ft									
18											
19			SA-8			1.2					
20											
21		End of Borehole									

Drilled By: Geotech Drilling

Ground Elevation: 0

Hole Diameter: 4"

Drill Method: Odex

Well Diameter: 2"

Drill Date: Dec. 9, 2013

Sheet: 1 of 1



Project No: 639-1302 **Borehole Log: MW 02-7-2**

Project: Watson Lake AEC 7

Well ID:

Client: PWGSC

Logged by: CMC

Site Location: Watson Lake Airport

Checked By: MC

SUBSURFACE PROFILE			SAMPLE		VOC Concentration					Well Completion Details	
Depth	Symbol	Description	Number	Recovery(%)	Type	10	30	50	70		90
0		Ground Surface									
1		SAND AND GRAVEL Trace silt, brown, dry, compact	SA-1			2.1					
2											
3											
4			SA-2			1.0					
5											
6		Moist @ 6 ft	SA-3			6.4					
7											
8											
9			SA-4			2.3					
10											
11		SILTY SAND Brown, moist, dense	SA-5			1.1					
12		Wet @ 11 ft									
13		SAND AND GRAVEL Trace cobble, coarse, brown, wet, compact	SA-6			0.0					
14											
15											
16			SA-7			0.3					
17											
18											
19			SA-8			0.0					
20											
21		End of Borehole									

Drilled By: Geotech Drilling

Ground Elevation: 0

Hole Diameter: 4"

Drill Method: Odex

Well Diameter: 2"

Drill Date: Dec. 9, 2013

Sheet: 1 of 1



Project No: 639-1302 **Borehole Log: MW 02-7-6**

Project: Watson Lake AEC 7

Well ID:

Client: PWGSC

Logged by: CMC

Site Location: Watson Lake Airport

Checked By: MC

SUBSURFACE PROFILE			SAMPLE			VOC Concentration					Well Completion Details
Depth	Symbol	Description	Number	Recovery(%)	Type	10	30	50	70	90	
0		Ground Surface									
1		SAND AND GRAVEL Trace cobbles, trace silt, brown, dry, dense									
2											
3											
4			SA-1			3.2					
5		Moist @ 5 ft									
6			SA-2			4.3					
7											
8		SAND AND GRAVEL Trace cobbles, coarse									
9											
10		Wet @ 7.5 ft No recovery between 7.5-19 ft									
11			SA-3						90		
12		Slight HC odour @ 10.5-11.5 ft									
13			SA-4			7.5					
14											
15			SA-5			5.0					
16											
17			SA-6			4.5					
18											
19											
20											
21		End of Borehole									

Drilled By: Geotech Drilling

Ground Elevation: 0

Hole Diameter: 4"

Drill Method: Odex and Split Spoon

Well Diameter: 2"

Drill Date: Dec. 8, 2013

Sheet: 1 of 1



Project No: 639-1302 **Borehole Log: MW 02-7-9**

Project: Watson Lake Delineation

Well ID:

Client: PWGSC

Logged by: CMc

Site Location: Watson Lake Airport

Checked By: MC

SUBSURFACE PROFILE			SAMPLE		VOC Concentration					Well Completion Details	
Depth	Symbol	Description	Number	Recovery(%)	Type	10	30	50	70		90
0		Ground Surface									
1		SAND AND GRAVEL Trace cobbles, trace silt, brown, dry, compact	SA-1			3.2					
4		SAND trace gravel, medium - coarse, brown, moist, soft	SA-2			0					
6			SA-3			0.5					
9			SA-4			1.8					
12		wet @ 10 ft	SA-5			2					
14			SA-6			25					
19			SA-8			1					
21		End of Borehole									

Drilled By: Geotech Drilling

Ground Elevation: 0

Hole Diameter: 4"

Drill Method: Odex and Split Spoon

Well Diameter: 2"

Drill Date: December 9, 2013

Sheet: 1 of 1



Project No: 639-1302 **Borehole Log: MW 02-7-4**

Project: Watson Lake AEC 7

Well ID:

Client: PWGSC

Logged by: CMC

Site Location: Watson Lake Airport

Checked By: MC

SUBSURFACE PROFILE			SAMPLE			VOC Concentration					Well Completion Details
Depth	Symbol	Description	Number	Recovery(%)	Type	10	30	50	70	90	
0		Ground Surface									
0		SAND AND GRAVEL Trace cobbles, fill, brown									
1			SA-1			0.7					
2											
3			SA-2			0.1					
4											
5											
6			SA-3			6.8					
7											
8			SA-4			3.0					
9		Wet @ 9.5 ft									
10											
11			SA-5			2.2					
12											
13			SA-6					60.1			
14											
15											
16											
17			SA-7			18.1					
18											
19			SA-8			6.1					
20											
21		End of Borehole									

Drilled By: Geotech Drilling

Ground Elevation: 0

Hole Diameter: 4"

Drill Method: Odex

Well Diameter: 2"

Drill Date: Dec. 8, 2013

Sheet: 1 of 1



Project No: 639-1401 **Borehole Log: MW 13-7-1**

Project: Watson Lake Delineation

Well ID:

Client: PWGSC

Logged by: CMC

Site Location: Watson Lake Airport

Checked By: MC

SUBSURFACE PROFILE			SAMPLE		VOC Concentration					Well Completion Details	
Depth	Symbol	Description	Number	Recovery(%)	Type	10	30	50	70		90
0		Ground Surface									
1		SAND AND GRAVEL Trace cobbles, brown, dry, loose									
2		Odex to 2.5 to seat casing									
3			SA-1			0.0					
4											
5											
6		Moist @ 6 ft	SA-2			0.0					
7		Organic Layer 1" @ 6 ft									
8		Wet @ 7 ft									
9			SA-3			0.6					
10											
11		SAND Some gravel, trace cobbles, grey-black, coarse, wet, loose	SA-4			2.1					
12											
13		Limited recovery: 1 jar									
14			SA-5		DUP 1		25				
15											
16			SA-6			0.0					
17											
18											
19			SA-7			0.5					
20											
21		End of Borehole									

Drilled By: Geotech Drilling

Ground Elevation: 0

Hole Diameter: 4"

Drill Method: Odex and Split Spoon

Well Diameter: 2"

Drill Date: Dec. 10, 2013

Sheet: 1 of 1



Project No: 639-1302 **Borehole Log: MW 13-7-2**

Project: Watson Lake Delineation

Well ID:

Client: PWGSC

Logged by: CMc

Site Location: Watson Lake Airport

Checked By: MC

SUBSURFACE PROFILE			SAMPLE			VOC Concentration					Well Completion Details	
Depth	Symbol	Description	Number	Recovery(%)	Type	10	30	50	70	90		
0		Ground Surface										
1		SAND AND GRAVEL Some silt/top soil, dry, loose										
2		Odex to 2 ft to seat casing										
3												
4			SA-1			0.5						
5												
6			SA-2			0.6						
7		SAND Some gravel, black/brown, coarse, wet, loose										
8												
9				SA-3			1.4					
10												
11				SA-4			1.1					
12												
13				SA-5			1.6					
14												
15			SA-6			1.0						
16												
17			SA-7			1.3						
18												
19			SA-8			0.0						
20												
21		End of BH @ 22.5 ft due to heaving										
22		End of Borehole										
23												
24												

Drilled By: Geotech Drilling

Ground Elevation: 0

Hole Diameter: 4"

Drill Method: Odex and Split Spoon

Well Diameter: 2"

Drill Date: Dec. 10, 2013

Sheet: 1 of 1



Project No: 639-1401 **Borehole Log: MW 13-7-3**

Project: Watson Lake Delineation

Well ID:

Client: PWGSC

Logged by: CMC

Site Location: Watson Lake Airport

Checked By: MC

SUBSURFACE PROFILE			SAMPLE		VOC Concentration					Well Completion Details	
Depth	Symbol	Description	Number	Recovery(%)	Type	10	30	50	70		90
0		Ground Surface									
0		SAND AND GRAVEL Trace cobbles, brown, dry, loose									
1											
2											
3											
4			SA-2			0.0					
5											
6											
7		Moist @ 7.5 ft Coarse @ 8 ft	SA-3			0.5					
8											
9			SA-4			32					
10											
11		Slight Sheen @ 11 ft	SA-5			10					
12											
13											
14			SA-6			0.8					
15											
16			SA-7			0.0					
17											
18											
19			SA-8			0.4					
20											
21		End of Borehole									

Drilled By: Geotech Drilling

Ground Elevation: 0

Hole Diameter: 4"

Drill Method: Odex and Split Spoon

Well Diameter: 2"

Drill Date: January 23, 2014

Sheet: 1 of 1



Project No: 639-1401 **Borehole Log: MW 13-7-4**

Project: Watson Lake Delineation

Well ID:

Client: PWGSC

Logged by: CMC

Site Location: Watson Lake Airport

Checked By: MC

SUBSURFACE PROFILE			SAMPLE		VOC Concentration					Well Completion Details	
Depth	Symbol	Description	Number	Recovery(%)	Type	10	30	50	70		90
0		Ground Surface									
1		SILTY SAND AND GRAVEL brown, dry, loose									
2		SAND AND GRAVEL coarse, grey/brown, compact									
3											
4			SA-2			0					
5											
6		Moist @ 6 ft Wet @ 7.5 ft	SA-3			0.3					
7											
8											
9			SA-4			1					
10											
11		Loose @ 10 ft	SA-5		DUP 2	2					
12											
13											
14			SA-6				25				
15											
16											
17			SA-7			0					
18											
19											
20											
21		End of Borehole									

Drilled By: Geotech Drilling

Ground Elevation: 0

Hole Diameter: 4"

Drill Method: Odex and Split Spoon

Well Diameter: 2"

Drill Date: January 23, 2014

Sheet: 1 of 1