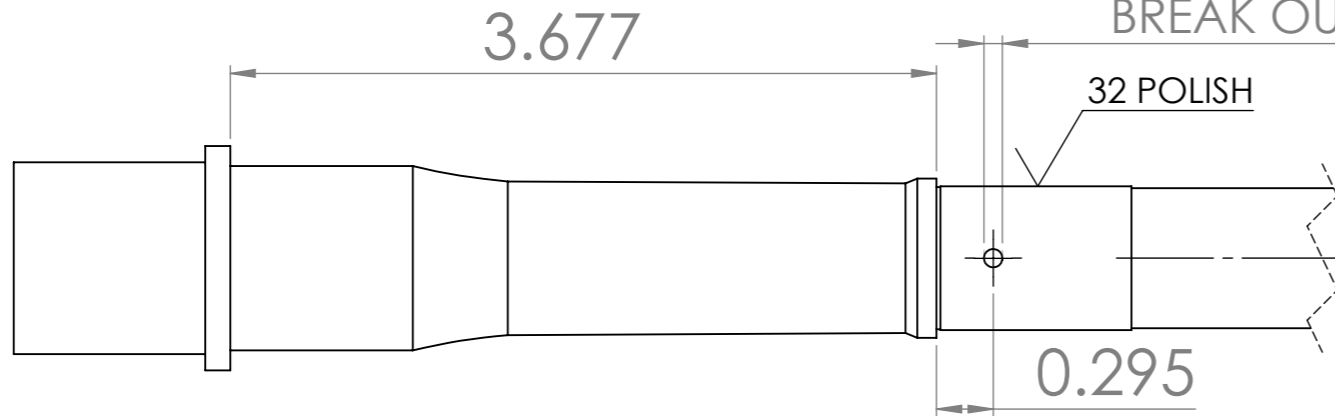
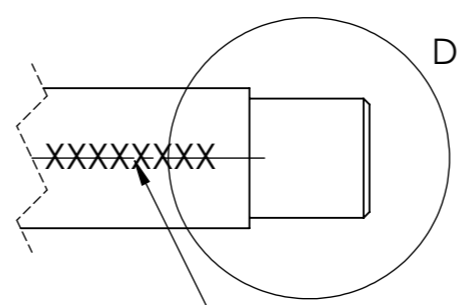


0.096 REAMED , NO BURR ON BORE SIDE
BREAK OUTSIDE EDGE .015 MAX

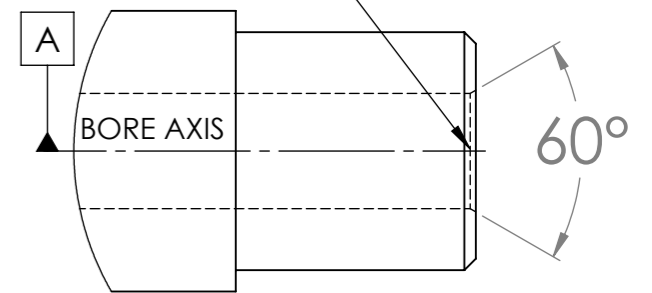


- 1- CHAMBER;300 ACC BLACKOUT
- 2- 8.2" BARREL
- 3- STAINLESS BARREL 416R
- 4- FINISH ; SAND BLAST AFTER STAMPING BARREL
- 5- STAMP SERIAL NUMBER SEQUENTIAL TO LOG ON BOTTOM ORIENTATION NEAR MUZZLE
- 6- STAMP CALIBER AND TWIST ON TOP ORIENTATION NEAR MUZZLE
- 7- BREAK ALL EDGES .015 MAX
- 8- RIFLING TWIST; 1 IN 7"
- 9- TOLERANCE DECIMAL +-.005 +-.02

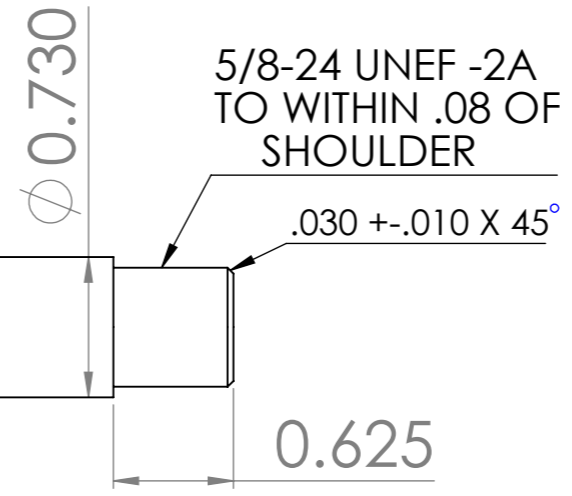
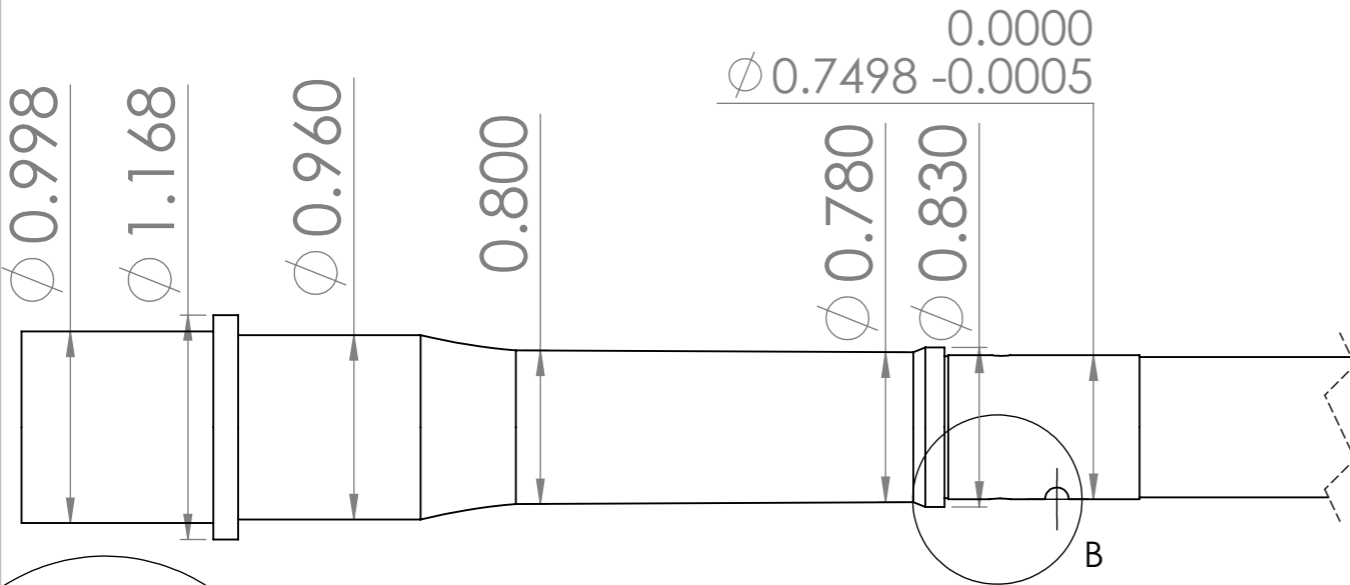


STAMP , STARTING FROM MUZZLE END TOWARD CHAMBER END. SEE NOTE 5 FAR SIDE SEE NOTE 6 NEAR SIDE

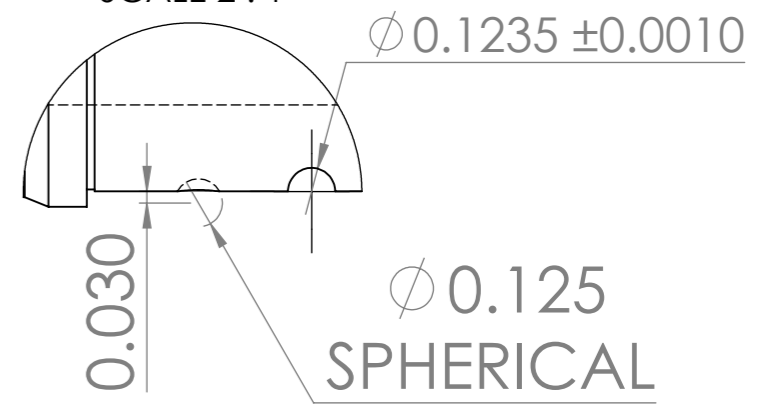
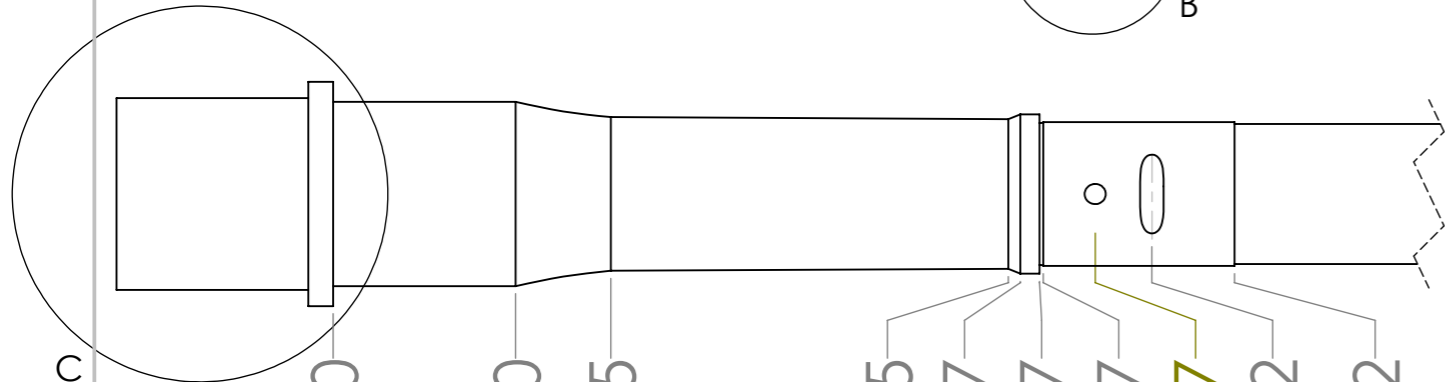
.006 A NO TOOL MARKS IN BORE



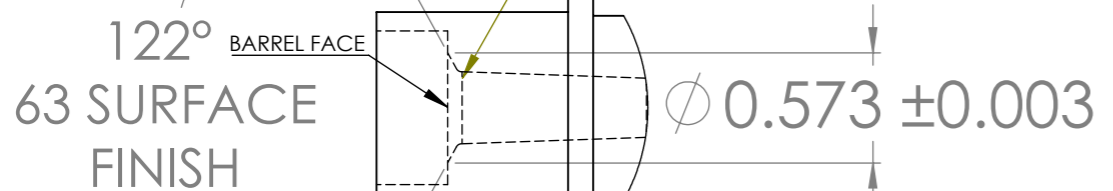
DETAIL D SCALE 2 : 1



DETAIL B SCALE 2 : 1



- 0.950
- 1.445
- 3.515
- 3.577
- 3.677
- 3.697
- 3.967
- 4.262
- 4.692
- 7.900



DETAIL C SCALE 1 : 1

UNLESS OTHERWISE SPECIFIED: DIMENSIONS ARE IN INCH SURFACE FINISH: TOLERANCES: LINEAR: ANGULAR:	FINISH: SCALE 1 : 1			DEBUR AND BREAK SHARP EDGES	DO NOT SCALE DRAWING		REVISION	
					TITLE: BARREL 8.2" CAL 300AAC STANDARD PROFILE , PISTOL LENGTH GAS SYSTEM			
				MATERIAL:				
				WEIGHT:		SCALE:1:2		SHEET 1 OF 1
DRAWN	NAME	SIGNATURE	DATE					
CHK'D								
APPV'D								
MFG								
Q.A								

RCMP-GRC