



RETURN BIDS TO:

RETOURNER LES SOUMISSIONS À:

Bid Receiving - PWGSC / Réception des soumissions
- TPSGC

11 Laurier St./11 rue Laurier

Place du Portage, Phase III

Core 0B2 / Noyau 0B2

Gatineau, Québec K1A 0S5

SOLICITATION AMENDMENT MODIFICATION DE L'INVITATION

The referenced document is hereby revised; unless otherwise indicated, all other terms and conditions of the Solicitation remain the same.

Ce document est par la présente révisé; sauf indication contraire, les modalités de l'invitation demeurent les mêmes.

Comments - Commentaires

THIS DOCUMENT CONTAINS A SECURITY
REQUIREMENT

Vendor/Firm Name and Address

Raison sociale et adresse du
fournisseur/de l'entrepreneur

Issuing Office - Bureau de distribution

Construction Services Division/Division des services de
construction

11 Laurier St./11 Rue Laurier

3C2, Place du Portage

Phase III

Gatineau, Québec K1A 0S5

Title - Sujet NEXT GENERATION ENVIRON. SIMULATOR	
Solicitation No. - N° de l'invitation EP076-162670/A	Amendment No. - N° modif. 001
Client Reference No. - N° de référence du client 20162670	Date 2016-10-20
GETS Reference No. - N° de référence de SEAG PW-\$\$\$FG-267-71638	
File No. - N° de dossier fg360.EP076-162670	CCC No./N° CCC - FMS No./N° VME
Solicitation Closes - L'invitation prend fin at - à 02:00 PM on - le 2016-10-25	Time Zone Fuseau horaire Eastern Daylight Saving Time EDT
F.O.B. - F.A.B. Plant-Usine: <input type="checkbox"/> Destination: <input checked="" type="checkbox"/> Other-Autre: <input type="checkbox"/>	
Address Enquiries to: - Adresser toutes questions à: Simard, Jean-Pierre	Buyer Id - Id de l'acheteur fg360
Telephone No. - N° de téléphone (819) 420-1796 ()	FAX No. - N° de FAX () -
Destination - of Goods, Services, and Construction: Destination - des biens, services et construction:	

Instructions: See Herein

Instructions: Voir aux présentes

Delivery Required - Livraison exigée	Delivery Offered - Livraison proposée
Vendor/Firm Name and Address Raison sociale et adresse du fournisseur/de l'entrepreneur	
Telephone No. - N° de téléphone Facsimile No. - N° de télécopieur	
Name and title of person authorized to sign on behalf of Vendor/Firm (type or print) Nom et titre de la personne autorisée à signer au nom du fournisseur/ de l'entrepreneur (taper ou écrire en caractères d'imprimerie)	
Signature	Date

Solicitation No. - N° de l'invitation
EP076-162670/A

Amd. No. - N° de la modif.
001

Buyer ID - Id de l'acheteur
FG 360

Client Ref. No. - N° de réf. du client
20162670

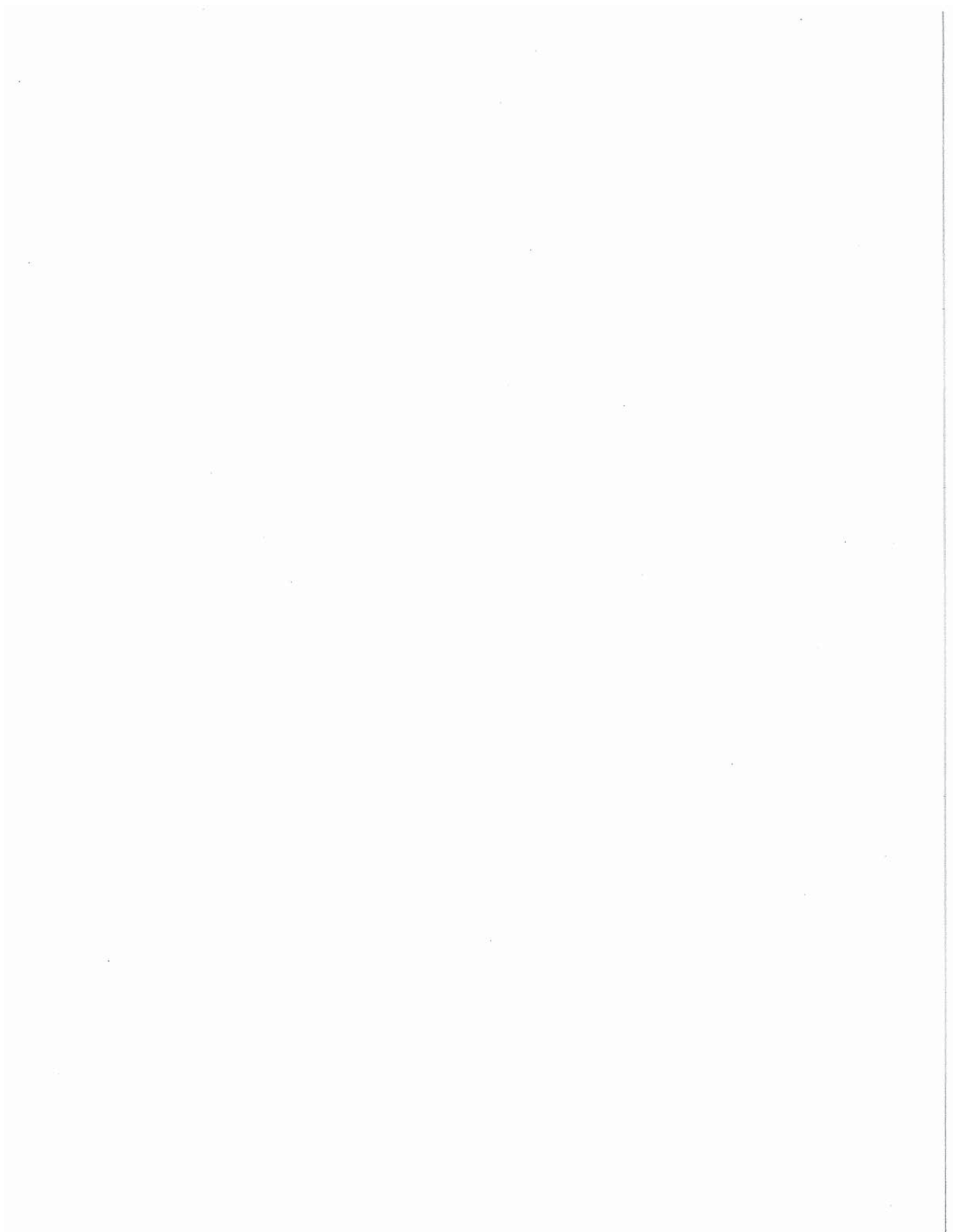
File No. - N° du dossier
FG360 EP076-162670/A

CCC No./N° CCC - FMS No./N° VME
R.075351.001

Amendment 001 is issued for the following reason:

- To issue Addendum number 1 attached hereto.

ALL OTHER TERMS AND CONDITIONS REMAIN UNCHANGED



ADDENDUM No. 01
Project Number: R.075351.001

The following changes in the bid documents are effective immediately. This addendum will form part of the contract documents

DRAWINGS

- .1 A-101 Architecture - Wall, Roof & Partition Assembly, Door & Window, Schedule & General Notes
 - .1 Delete Door and Frame Type schedule entirely.
Replace with: Door and Frame Type schedule, as per sketch ASK-1, attached to this addendum.
- .2 A-200 Architecture - Floor Plan - Cold Room & Mezzanine Plan
 - .1 On detail 2, delete the notes "915 TYP" and "12 Horizontal Panels @ 915mm" entirely.
Replace with: "915 MIN" and "Size Panels to Fit", as per sketch ASK-2 attached to this addendum.
- .3 A-201 Architecture - Floor Plan- Building 10 & Science Lab 195a Roof Plan Building 10
 - .1 On detail 1, delete specific note #15 identification entirely, as per attached sketch ASK-3.
 - .2 Delete the specific note #15 entirely.
Replace with: "Not Used", as per attached sketch ASK-3.
- .4 A-630 Architecture – Section Details
 - .1 To the note "Perimeter Trench" of Details 1, 3 and 4:
Add: This perimeter trench shall be Serrated type stainless steel 316 grating, 30mmx50.8mm standard mesh with 25.4mmx3.1mm bearing bars.

SPECIFICATIONS

- .1 Section 01 91 31 – Commissioning (CX) Plan, article 1.14.5.1
 - .1 Delete article 1.14.5.1 in its entirety:
Replace with: All cooling and ventilation systems.
- .2 Section 07 13 52 – Modified Bituminous Sheet Waterproofing
 - .1 Add section 07 13 52 to the specification. This section is attached this addendum.
- .3 Section 07 42 43 – Composite Wall Panels
 - .1 Delete article 2.1.10.2.1.2 entirely:
Replace with: Gauge: 20 or 22 (steel).
 - .2 Delete article 2.1.10.2.1.3 entirely:
Replace with: Profile: Flat or profiled.
 - .3 Delete article 2.1.11.1 entirely:
Replace with: Custom color as selected by Departmental Representative, according to the full color pallet of the manufacturer.
 - .4 Delete article 2.2.10.5.1 entirely:
Replace with: Fluoropolymer (PVDF) Three Coat system: 0.2 mil primer with 0.8 mil Kynar 500 (70 percent) SOLID color coat and clear coat. Thickness of clear coat as per manufacturer recommendation.

ADDENDUM No. 01
Project Number: R.075351.001

The following changes in the bid documents are effective immediately. This addendum will form part of the contract documents

- .4 Section 23 21 14 – Hydronic Specialties
 - .1 Delete article 2.5.2 entirely:
 Replace with: Capacity: 189 litres, (508mm max. diameter).
 - .2 Delete article 2.6.3 entirely:
 Replace with: Capacity: 94 litres min.

DOOR AND FRAME TYPES/ PORTES ET FENÊTRE TYPES												
OPENING/ OUVERTURE			FRAMES/ CADRES		DOORS/ PORTES							
DOOR#/ #PORTE	FROM/ DE	TO/ JUSQU'A	TYPE	FINISH/ FINI	TYPE	FINISH/ FINITION	WIDTH/ LARGEUR (mm)	HEIGHT/ HAUTEUR (mm)	THICKNESS/ ÉPAISSEUR (mm)	GLAZING/ VITRAGE	HARDWARE/ QUINCAILLERIE	NOTE
D01	LOADING ZONE 194	CONTROL ROOM 194F	M	PNT	M	PNT	915	1990	45		1	
D02	LOADING ZONE 194	VESTIBULE 194G	M	PNT	M	PNT	915	1990	45		1	
D03	VESTIBULE 194G	COLD ROOM 194E	M-I	PNT	M-I	PNT	915	1990	45		2	
D04	LOADING ZONE 194	COLD ROOM 194E	M-I	PNT	M-I	PNT	3253	2388	45		5	
D05	EXTERIOR	BUILDING 10	M-I	PNT	M-I	PNT	3558	2958	45		5	
D06	EXTERIOR	BUILDING 10	M-I	PNT	M-I	PNT	915	1990	45		3	
D07	CORRIDOR	ROOM 195	E				1830	1990	45		4	1
D08	CORRIDOR	EXTERIOR	M	PNT	M	PNT	915	1990	45		4	2

LEGEND - MATERIALS/ LÉGENDE MATÉRIEL:

AL ALUMINUM/ ALUMINIUM

AL-I ALUMINUM INSULATED/ ALUMINIUM ISOLÉ

M-I METAL INSULATED/ MÉTAL ISOLÉ

M METAL/ MÉTAL

E EXISTING TO REMAIN/ EXISTANTE

LEGEND - FINISHES/ LÉGENDE FINITION:

PNT PAINT/ PEINTURE

NOTES:

1- EXISTING DOOR TO REMAIN. PROVIDE NEW NUMERIC KEY PAD DOOR LOCK/ PORTE EXISTANTE À CONSERVER. VERROUILLAGE DE PORTE AVEC CADENAS NUMÉRIQUE.

2- EXISTING DOOR TO BE REMOVED SALVAGED AND REINSTALLED IN NEW LOCATION AS INDICATED IN CONSTRUCTION PLAN/ PORTE EXISTANTE À ÊTRE ENLEVÉ, RÉCUPÉRER ET RÉINSTALLER SELON LE PLANS DE CONSTRUCTION.

HARDWARE/ QUINCAILLERIE:

GROUP 1/ GROUPE 1:

3 HINGES/ CHARNIÈRE

1 OVERHEAD STOP/ ARRÊT DE PORTE

1 DOOR CLOSER/ FERME PORTE

1 CARD READER (SUPPLY & INSTALL BY SECURITY ALLOWANCE)/ LECTEUR DE CARTE

1 ELECTRIC STRIKE PLATE/ GÂCHE ÉLECTRIQUE

1 S.S. KICK PLATE/ GARDE PIED EN A.I.

GROUP 2/ GROUPE 2:

3 HINGES/ CHARNIÈRE

1 OVERHEAD STOP/ ARRÊT DE PORTE

1 DOOR CLOSER/ FERME PORTE

1 DOOR BOTTOM SEAL/ COUPE-BISE DE SEUIL

1 THRESHOLD/ SEUIL DE PORTE

1 WEATHER STRIPPING/ COUPE FROID

1 S.S. KICK PLATE/ GARDE PIED EN A.I.

1 STRIKE PLATE/ GÂCHE

1 PANIC BAR/ BAR ANTI-PANIQUE

GROUP 3/ GROUPE 3:

3 HINGES/ CHARNIÈRE

1 OVERHEAD STOP/ ARRÊT DE PORTE

1 DOOR CLOSER/ FERME PORTE

1 DOOR BOTTOM SEAL/ COUPE-BISE DE SEUIL

1 THRESHOLD/ SEUIL DE PORTE

1 WEATHER STRIPPING/ COUPE FROID

1 ELECTRIC STRIKE PLATE/ GÂCHE ÉLECTRIQUE

1 CARD READER (NOT IN CONTRACT)/ LECTEUR DE CARTE (HORS CONTRAT)

GROUP 4/ GROUPE 4:

1 CARD READER (NOT IN CONTRACT)/ LECTEUR DE CARTE (HORS CONTRAT)

GROUP 5/ GROUPE 5:

1 GARAGE DOOR OPERATOR. REFER TO SPECIFICATION 08.36.13.02/ OPÉRATEUR PORTE DE GARAGE. SE RÉFÉRER AU DEVIS SECTION 08.36.13.02

ISSUED AS PART OF: 3000X

(L+D)

LALANDE + DOYLE ARCHITECTS INC. Tel: 416.223.2050 Fax: 416.223.1708 401-27 Queen Street West, Toronto, Ontario M5H 1K5

PROJECT NAME
ENVIRONNEMENT CANADA - ESTS NEXT GENERATION ENVIRONNEMENTAL SIMULATOR/
DUST SIMULATEUR D'ENVIRONNEMENT ULTRAMODERNE DE LA PROCHAINE GÉNÉRATION

DRAWING TITLE
ADDENDUM no.1 / ADDENDA no.1
REFERENCED FROM A-101/ SE RÉFÉRER AU PLAN A-101

DATE
19.10.2016

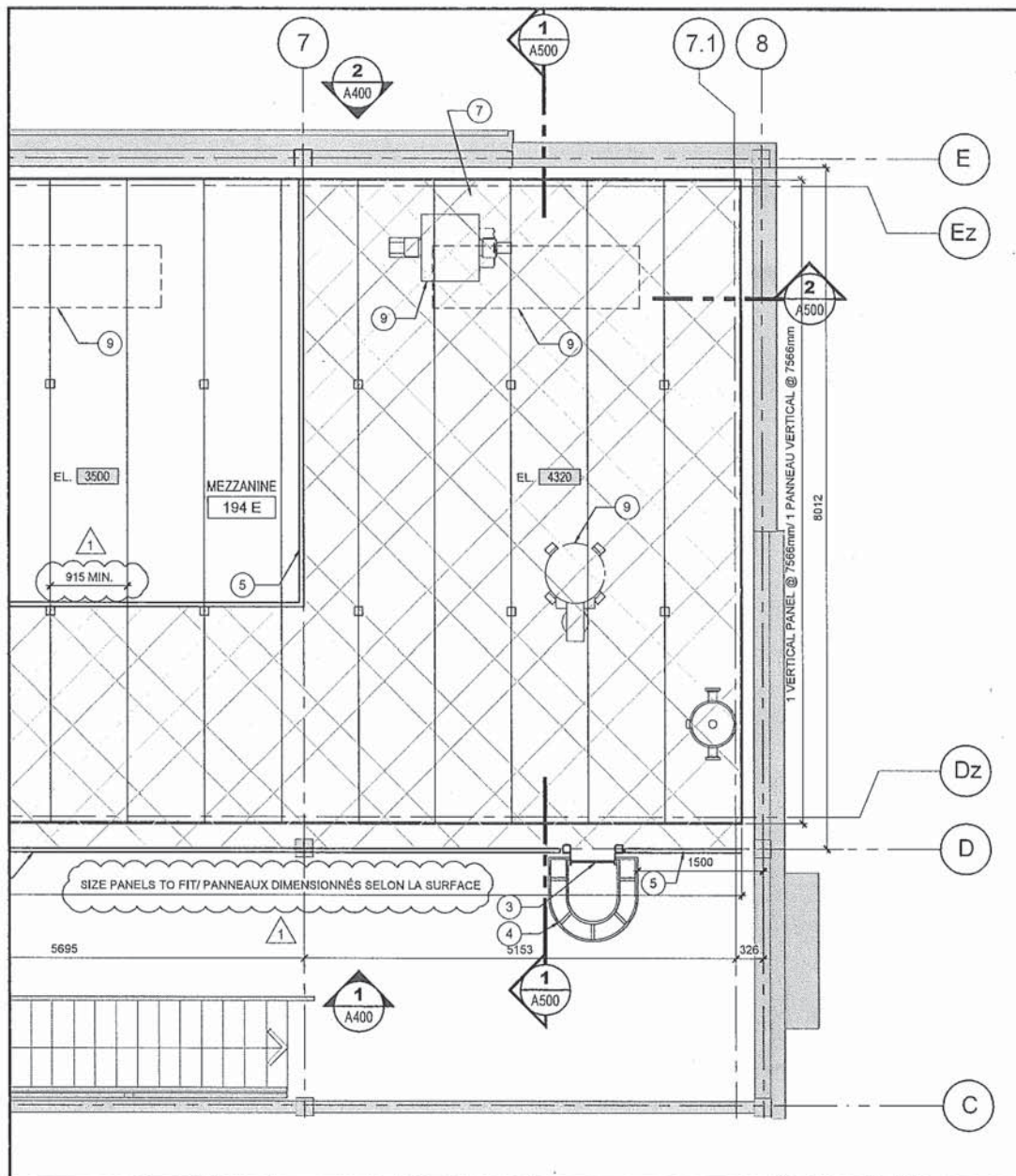
PROJECT NO.
R.075351.00

SCALE
AS NOTED

DRAWN BY
JD

DRAWING NO.
ASK-1

REVIEWED BY
PD



2 MEZZANINE PLAN/ PLAN DE MEZZANINE
 A200 COLD ROOM/ CHAMBRE FROIDE SCALE/ÉCHELLE = 1 : 50

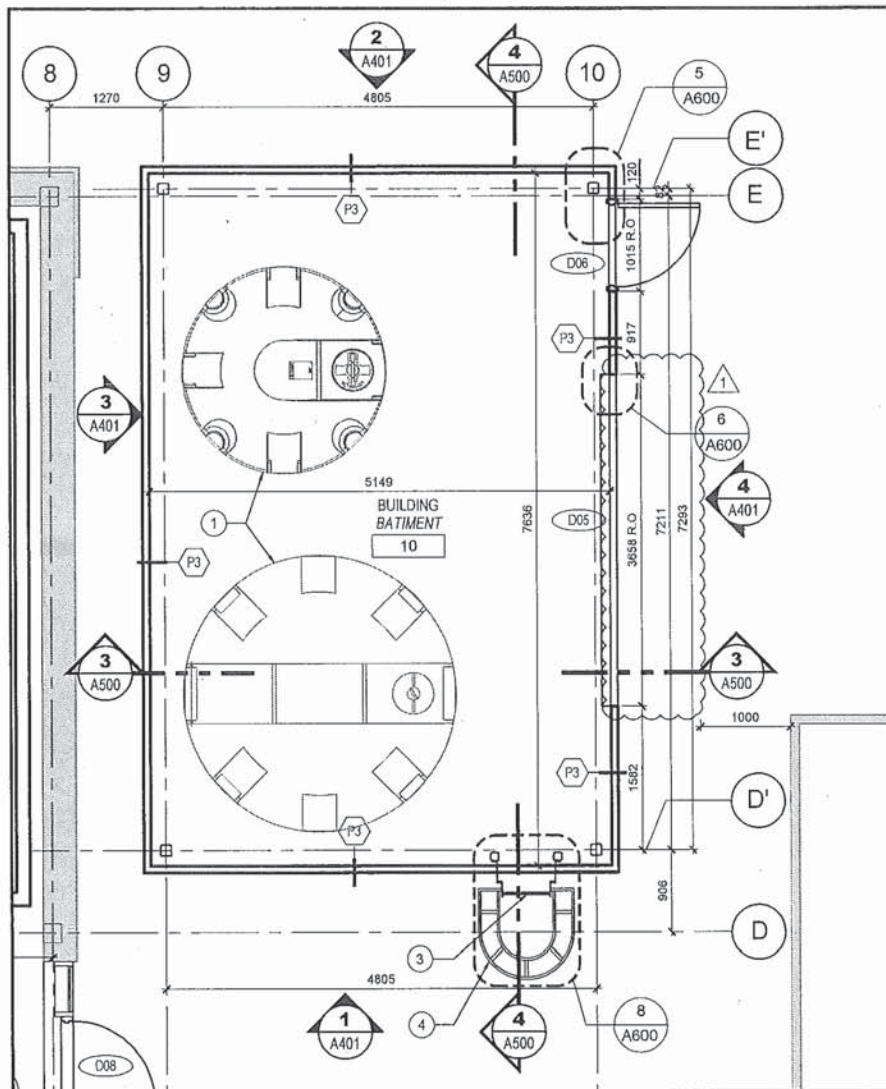
ISSUED AS PART OF: 00000

(L + D)

LLANDE + O'NEILL ARCHITECTS INC. Tel: 613.733.2000 430-27 Queen Street
 Fax: 613.733.1728 Ottawa, Ontario K1P 6H8
 www.lld.ca

PROJECT NAME
 ENVIRONNEMENT CANADA - ESTS NEXT GENERATION ENVIRONNEMENTAL SIMULATOR/
 DUST SIMULATEUR D'ENVIRONNEMENT ULTRAMODERNE DE LA PROCHAINE GÉNÉRATION
 DRAWING TITLE
 ADDENDUM no. 1/ ADDENDA no. 1
 REFERENCED FROM A-200/ SE RÉFÉRER AU PLAN A-200

DATE
 19.10.2016
 SCALE
 AS NOTED
 PROJECT NO.
 R.075351.00
 DRAWN BY
 JO
 REVIEWED BY
 PD
 DRAWING NO.
 ASK-2



1 FLOOR PLAN/ PLAN REZ-DE-CHAUSSEE
 BUILDING 10/ BÂTIMENT 10
 SCALE/ ÉCHELLE = 1:50

SPECIFIC NOTES/ NOTES SPÉCIFIQUES:

- (13) FIELD CUT TO ACCOMMODATE HSS HANGERS/ COUPE SUR LE CHANTIER POUR ACCOMMODER LES HSS.
- (14) REMOVE AND REPAIR DAMAGED PARGING UNDER EXISTING DOOR. PATCH FOUNDATION PARGING TO MATCH EXISTING/ ENLEVER ET RÉPARER LE CRÉPIS ENDOMMAGÉ EN DESSOUS DE LA PORTE EXISTANTE. CORRESPONDRE À L'EXISTANT.
- (15) NOT USED/ NON UTILISÉE 1
- (16) EXISTING WORKSHOP BENCH, COUNTERTOP, AND STORAGE UNITS TO REMAIN/ BANC D'ATELIER, COMPTOIR, ET UNITÉ D'ENTREPOSAGE À RESTER.
- (17) EXISTING VANITY TO REMAIN/ LAVABO EXISTANT À RESTER.

ISSUED AS PART OF: 5000X

(L+D)

LALANDE + DOYLE ARCHITECTS INC. Tel: 913.223.2800 400-257 Queen Street
 Fax: 913.223.1908 Ottawa, Ontario K1P 6J5
 www.l+d.ca

PROJECT NAME
 ENVIRONNEMENT CANADA - ESTS NEXT GENERATION ENVIRONNEMENTAL SIMULATOR/
 DUST SIMULATEUR D'ENVIRONNEMENT ULTRAMODERNE DE LA PROCHAÎNE GÉNÉRATION
 DRAWING TITLE
 ADDENDUM no. 1/ ADDENDA no. 1
 REFERENCED FROM A-201/ SE RÉFÉRER AU PLAN 201

DATE
 19.10.2016
 SCALE
 AS NOTED
 PROJECT NO.
 R.075351.00
 DRAWING NO.
 ASK-3
 DRAWN BY
 JO
 REVIEWED BY
 PD

Part 1 General**1.1 RELATED REQUIREMENTS**

- .1 Section 03 30 00 – Cast-in Place Concrete.

1.2 REFERENCES

- .1 ASTM International Inc.
- .2 ASTM D 41-05, Standard Specification for Asphalt Primer Used in Roofing, Dampproofing, and Waterproofing.
- .3 ASTM D 448-03a, Standard Classification for Sizes of Aggregate for Road and Bridge Construction.
- .4 ASTM D 2178-04, Standard Specification for Asphalt Glass Felt Used in Roofing and Waterproofing.
- .5 Canadian General Standards Board (CGSB)
- .6 CGSB 37-GP-9Ma-83, Primer, Asphalt, Unfilled, for Asphalt Roofing, Dampproofing and Waterproofing.
- .7 CGSB 37-GP-56M-80b(A1985), Membrane, Modified, Bituminous, Prefabricated, and Reinforced for Roofing.

1.3 ACTION AND INFORMATIONAL SUBMITTALS

- .1 Provide submittals in accordance with Section 01 33 00 - Submittal Procedures.
- .2 Product Data:
 - .1 Provide two copies of most recent technical waterproofing components data sheets describing materials' physical properties and include product characteristics, performance criteria, physical size, finish and limitations.
 - .2 Provide two copies of WHMIS MSDS in accordance with Section 01 35 29.06 - Health and Safety Requirements, and indicate VOC content for:
 - .1 Primers.
 - .2 Asphalt.
 - .3 Sealers.
 - .4 Filter fabric.
 - .5 Provide shop drawings and indicate:
 - .6 Flashing, control joints details.

1.4 FIRE PROTECTION

- .1 Fire Extinguishers:
 - .1 Maintain one cartridge operated type or stored pressure rechargeable type with hose and shut-off nozzle,
 - .2 ULC labelled for A, B and C class protection.

- .3 Size: 9 kg per torch applicator, within 6 m of torch applicator.
- .2 Maintain fire watch for 1 hour after each day's waterproofing operations cease.

1.5 DELIVERY, STORAGE, AND HANDLING

- .1 Provide and maintain dry, off-ground weatherproof storage.
- .2 Store rolls of felt and membrane in upright position.
- .3 Store membrane rolls with salvage edge up.
- .4 Remove only in quantities required for same day use.
- .5 Place plywood runways over completed Work to enable movement of material and other traffic.
- .6 Store sealants at +5 degrees C minimum.
- .7 Handle waterproofing materials in accordance with manufacturer's written directives, to prevent damage or loss of performance.
- .8 Store and manage hazardous materials in accordance with Section 01 35 29.06 - Health and Safety Requirements.
- .9 Packaging Waste Management: remove for reuse and return by manufacturer of pallets, crates, padding and packaging materials in accordance with Section 01 74 21 - Construction/Demolition Waste Management and Disposal.
- .10 Collect and separate plastic, paper packaging and corrugated cardboard in accordance with Waste Management Plan.
- .11 Fold up metal banding, flatten and place in designated area for recycling.

1.6 SITE CONDITIONS

- .1 Ambient Conditions
 - .1 Do not install waterproofing when temperature remains below -18 degrees C for torch application.
 - .2 Minimum temperature for solvent-based adhesive is -5 degrees C.
 - .3 Install waterproofing on dry deck, free of snow and ice, use only dry materials and apply only during weather that will not introduce moisture into waterproofing system.

Part 2 Products

2.1 PERFORMANCE CRITERIA

- .1 Waterproofing System: capable of resisting moisture/water head of 305 mm, and preventing moisture migration to interior.
- .2 Compatibility between components of waterproofing system is essential. Provide written declaration to Departmental Representative stating that materials and components, as assembled in system, meet this requirement.

2.2 PRIMER

- .1 Asphalt primer: to CGSB 37-GP-9Ma.

2.3 MEMBRANE

- .1 Base sheet: to CGSB 37-GP-56M
 - .1 Styrene-Butadiene-Styrene (SBS) elastomeric polymer prefabricated sheet, polyester reinforcement, having nominal weight of 180 g/m² minimum.
 - .2 Type 2, fully adhered.
 - .3 Class C - plain surfaced.
 - .4 Grade heavy duty service.
 - .5 Top and bottom surfaces:
 - .6 sanded/polyethylene].
 - .7 Base sheet membrane properties: to CGSB 37-GP-56M
 - .1 Strain energy (longitudinal/transversal): 9.0/7.0 kN/m.
 - .2 Breaking strength (longitudinal/transversal): 17.0/18.0 N/5 cm.
 - .3 Ultimate elongation (longitudinal/transversal): 60/70%.
 - .4 Tear resistance: 85 N.
 - .5 Cold bending at -30 degrees C : no cracking.
 - .6 Softening point: δ 110 degrees C.
 - .7 Static puncture resistance: > 400.
 - .8 Dimensional Stability: -0.3 / 0.3 %.
 - .8 ULC certification: Class A.
- .2 Cap sheet membrane: to CGSB 37-GP-56M.
 - .1 Styrene-Butadiene-Styrene (SBS) elastomeric polymer, prefabricated sheet, polyester reinforcement, having nominal weight of 250 g/m².
 - .2 Type 2, fully adhered.
 - .3 Class C-plain surfaced.
 - .4 Grade heavy duty service.
 - .5 Bottom surface polyethylene.
 - .6 Cap sheet membrane properties: to CGSB 37-GP-56M.
 - .1 Strain energy (longitudinal/transversal): 13.0/10.0 kN/m.
 - .2 Breaking strength (longitudinal/transversal): 25.0/16.0 kN/m.
 - .3 Ultimate elongation (longitudinal/transversal): 63/73 %.
 - .4 Tear resistance: 80 N.
 - .5 Cold bending at -30 degrees C: no cracking.
 - .6 Softening point: δ 110 degrees C.
 - .7 Static puncture resistance: > 400.
 - .8 Dimensional Stability: -0.2 / 0.2 %.
 - .7 ULC certification: Class A.

2.4 SEALERS

- .1 Plastic cement: asphalt.
- .2 Sealing compound: rubber asphalt type.
- .3 Sealants: Caulking - see Section 07 92 00 - Joint Sealants.

Part 3 Execution**3.1 QUALITY OF WORK**

- .1 Do priming for asphalt waterproofing in accordance with manufacturer's written recommendations.
- .2 Assembly, component and material connections will be made in consideration of appropriate design loads.

3.2 EXAMINATION OF CONDITIONS

- .1 Verification of Conditions:
 - .1 Inspect with Departmental Representative conditions to determine readiness to proceed.
 - .2 Evaluation and Assessment: prior to beginning of work ensure:
 - .3 Surfaces are firm, straight, smooth, dry, free of snow, ice or frost, and swept clean of dust and debris. Do not use calcium or salt for ice or snow removal.

3.3 PROTECTION OF IN-PLACE CONDITIONS

- .1 Use warning signs and barriers. Maintain in good order until completion of Work.
- .2 Clean off drips and smears of bituminous material immediately.
- .3 Protect from traffic and damage. Comply with precautions deemed necessary by Departmental Representative.
- .4 Metal connectors will be treated with rust proofing or galvanization.

3.4 PRIMING

- .1 Apply primer to waterproofing substrate at the rate recommended by manufacturer.

3.5 PROTECTED MEMBRANE APPLICATION

- .1 Apply primer to substrate at rate specified on label.
- .2 Base sheet application:
 - .1 Starting at low point of roof, perpendicular to slope, unroll base sheet, align and reroll from both ends.
 - .2 Unroll and torch base sheet onto substrate taking care not to burn membrane or its reinforcement or substrate.
 - .3 Lap sheets 75 mm for side and 150 mm for end laps.
 - .4 Application to be free of blisters, wrinkles and fishmouths.

- .3 Cap sheet application:
 - .1 Starting at low point on roof, perpendicular to slope, unroll cap sheet, align and reroll from both ends.
 - .2 Unroll and torch cap sheet onto base sheet taking care not to burn membrane or its reinforcement.
 - .3 Lap sheets 75 mm minimum for side laps and 150 mm minimum for end laps. Offset joints in cap sheet 300 mm from those in base sheet.
 - .4 Application to be free of blisters, fishmouths and wrinkles.
- .4 Do membrane application in accordance with manufacturer's recommendations.

3.6 CLEANING

- .1 Remove bituminous markings from finished surfaces.
- .2 In areas where finished surfaces are soiled caused by work of this section, consult manufacturer of surfaces for cleaning advice and complying with their [documented] instructions.
- .3 Repair or replace defaced or disfigured finishes caused by work of this section.
- .4 Waste Management: separate waste materials for reuse and recycling in accordance with Section 01 74 21 - Construction/Demolition Waste Management and Disposal.
- .5 Place materials defined as hazardous or toxic in designated containers.
- .6 Clearly label location of salvaged material's storage areas and provide barriers and security devices.
- .7 Ensure emptied containers are sealed and stored safely.
- .8 Unused coating material must be disposed of at official hazardous material collections site as reviewed by Departmental Representative.
- .9 Unused adhesive, sealant and asphalt materials must not be disposed of into sewer system, into streams, lakes, onto ground or in other location where it will pose health or environmental hazard.
- .10 Dispose of unused adhesive material at official hazardous material collections site approved by Departmental Representative.
- .11 Dispose of unused sealant material at official hazardous material collections site approved by Departmental Representative.
- .12 Dispose of unused asphalt material at official hazardous material collections site approved by Departmental Representative.

END OF SECTION