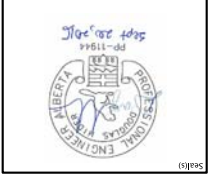


| | |
|-----------------|--|
| Project | RAMP DETACHMENT ADDITION KILLAM, AB |
| Client | RCMP |
| Project Manager | A. BUTLER |
| Checked | D. J. HEDER |
| Drawn | A. KOMAROV |
| Project No. | NCCA-16-0096-99 |
| Drawing No. | E20-00-00 |

Check Scale (may be photo reduced)
 0 10mm
 0 1inch

NORR
 NORR ARCHITECTS ENGINEERS PLANNERS
 22-11 46th St. S.
 Suite 100,
 Calgary, Alberta, Canada T2C 0V9
 www.norr.com



Consultants
 Client: NORR ARCHITECTS ENGINEERS PLANNERS
 Architect: NORR ARCHITECTS ENGINEERS PLANNERS
 Structural: NORR ARCHITECTS ENGINEERS PLANNERS
 Mechanical: NORR ARCHITECTS ENGINEERS PLANNERS
 Electrical: NORR ARCHITECTS ENGINEERS PLANNERS

North Arrow

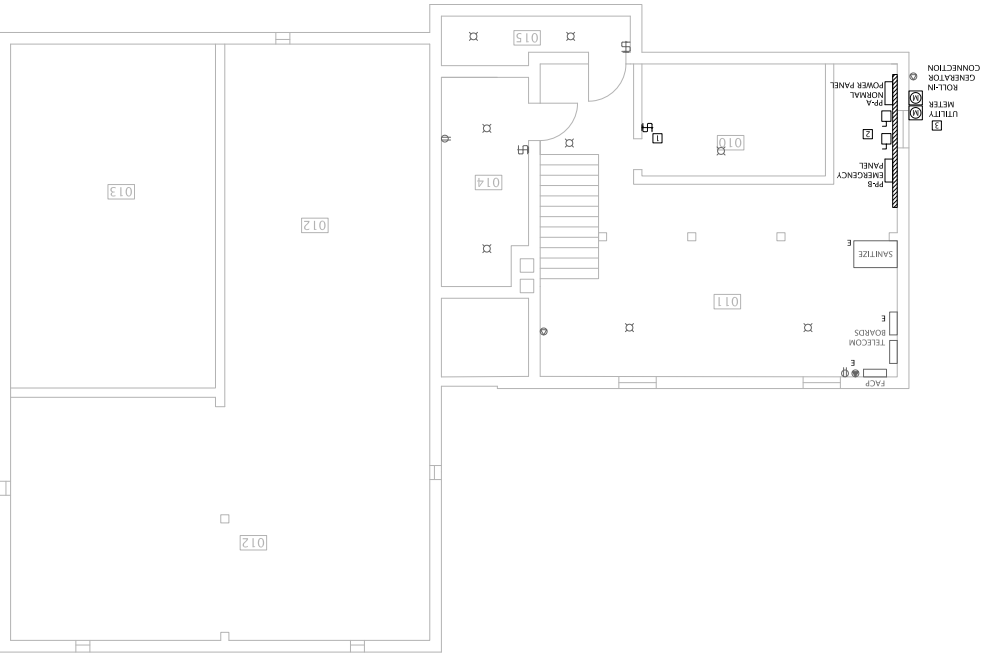
DETAIL #

Keyplan

| REV | DATE | ISSUED FOR |
|-----|------------|---------------------------|
| A | 2016-07-27 | 50% REVIEW |
| B | 2016-08-17 | 50% REVIEW - RESUBMISSION |
| C | 2016-09-01 | 90% REVIEW |
| D | 2016-09-20 | TENDER |

This drawing has been prepared solely for the use of the Client and there are no representations of any kind made by NORR Architects Engineers Planners to any other person who addresses Engineers Planners to any other person a contract. The drawing shall not be used for construction purposes until the seal appearing hereon is signed and dated by the architect or engineer.

E20-00-00
 1:50
01
 LIGHTING & POWER PLAN - BASEMENT



- REFERENCE NOTES**
- 1) CONTRACTOR TO PROVIDE A NEW SWITCH SWITCH ACCORDINGLY FOR THIS SPACE. SWITCHING TO NEW SYSTEM, NORMAL AND EMERGENCY PANELS SHOULD DISCONNECT ON PARKING AND DISCONNECT SWITCHES. REFER TO E30-00-00 FOR ADDITIONAL INFORMATION.
 - 2) CONTRACTOR TO VERIFY THAT THE SECONDARY CABLE SIZE AND WEIGHT STANDARDS AND PROVIDE THE INFORMATION TO THE ELECTRICAL ENGINEER.

- GENERAL NOTES**
- A) ELECTRICAL CONTRACTOR TO LABEL ALL POWER RECEPTACLES WITH CIRCUIT IDENTIFICATION. THIS APPLIES TO ALL RECEPTACLES IN THE BUILDING, NEW AND EXISTING.
 - B) ELECTRICAL CONTRACTOR TO REVIEW ALL CIRCUIT LOADING IN THE BUILDING. PROVIDE AND UPDATE AS NECESSARY INSTALLED PANEL SCHEDULE FOR EACH PANEL. PANEL SCHEDULE INFORMATION SHOULD INCLUDE BREAKER SIZE AND POLES, LOAD TYPE AND ESTIMATED LOAD. THIS SCHEDULE SHALL BE COMPLETED IN THE INITIAL STAGES OF CONSTRUCTION TO THE ELECTRICAL ENGINEER FOR REVIEW.
 - C) ELECTRICAL CONTRACTOR SHALL COMPLETE A STATED SURVEY OF ALL ELECTRICAL COMPONENTS ON THE INTERIOR AND EXTERIOR OF THE BUILDING AND MAKE UP ON AS OF AS-BUILT DRAWINGS. MARKUPS WILL INCLUDE CIRCUIT IDENTIFICATION.
 - D) UNLESS OTHERWISE INDICATED ALL ELECTRICAL EQUIPMENT THAT IS EXISTING TO REMAIN.
 - E) ELECTRICAL CONTRACTOR SHALL REVIEW ALL WORKING FOR ALL SYSTEMS WHERE PROBLEMS AND MORE ANY DEFICIENCIES BACK TO ENGINEER.

Table with 2 columns: No. and Description. Contains detailed technical specifications for electrical conduit, including material types (PVC, EMT, RMC), installation methods, and safety requirements. Includes sections for general notes, conduit types, and specific installation instructions.

Project Information: Project Name (KILLAM RCMP DETACHMENT ADDITION), Client (RCMP), and Project Location (KILLAM, AB). Includes drawing title (ELECTRICAL SPECIFICATION) and drawing number (E40-00-00).

Logos and drawings: NOR logo, a circular drawing of a conduit fitting, and a technical drawing of a conduit elbow with dimensions.

Checklist: A table with columns for 'DATE' and 'ISSUED FOR'. Lists various review stages such as '50% REVIEW - ESTIMATION', '100% REVIEW', and 'CONSTRUCTION'.

Notes and specifications: A list of numbered notes (1-27) providing specific instructions and requirements for the electrical conduit installation project.

