

20 October 2016

Page 1

Part 1 ELECTRICAL**1.1 Drawings**

- .1 Refer to **Drawing E-100 – Mechanical Equipment Schedule & Detail:**
 - .1 Revise Chiller ‘CH-01’ feeder to 3#3 RW90 in 27mmC and provide 100/90A-3P fused disconnect switch.
 - .2 Delete FCU-02, FCU-03, CD-2 and CD-3 from mechanical equipment schedule.
 - .3 Correction: Condenser ‘CD-1’ is fed from new panel ‘**PP-4B**’.
 - .4 Add new pump P-08 on mechanical equipment schedule. Replace starter and feeder to suit.
- .2 Refer to **Drawing E-101 – Electrical Panel Schedules (Panel Schedule LP-EDA attached):**
 - .1 Panel schedule ‘LP-EDA’ updated to include circuits for pipe heat tracing and deleted circuits for FCU-02, CD-02, FCU-03 and CD-03. Provide 100A-3P main breaker for this panel. Refer to attached panel schedule.
- .3 Refer to **Drawing E-201 – Main Building – Ground Floor Admin Wing Detail #1 (attached sketch SKE-201x01):**
 - .1 Revise location of new panel ‘LP-EDA’ from Corridor 207 to Telecom & Electronics Rm 210 adjacent to existing panel ‘PP-K’. Provide cutting, patching and finishing as required and include in the cost of the contract. Ensure there is enough clearance in front of the panelboard to meet code.
 - .2 Delete FCU-02 and FCU-03 in LAN Rm 216D.
 - .3 Replace old pump P-08 in Fan Supply Room 182 with new and provide new starter, wiring and conduit to suit. Exact location to be coordinated on site.
 - .4 Detail #1 / Drawing E-201: Revise diamond note #1 to read “Provide new starter, wiring and conduit to suit.”
- .4 Refer to **Drawing E-203 – Main Building Admin Wing Roof Plan:**
 - .1 Add one (1) 208V, 15A-2P power connection with weatherproof disconnect fed from circuit EDA-4,6 for pipe heat tracing on the roof to and from the new Chiller unit. Coordinate exact location on site.
 - .2 Delete power connection for CD-02 and CD-03.
- .5 Refer to **Drawing E-500 – Single Line Diagram:**
 - .1 Corrected the spelling of “Penthouse” for Splitter No. 2 location.
 - .2 Replace existing chiller ‘ME-11’ fed from Splitter No. 2 with new chiller ‘CH-1’ and revise feeder to 3#3 RW90 in 27mmC and provide 100/90A-3P fused disconnect switch.
 - .3 Location of new panel ‘LP-EDA’ revised to Telecom & Electronics 210.

20 October 2016

Page 2

- .4 Clarification: New scope of work is shown enclosed in a box with dashed lines and with tag “**NEW SCOPE**”. Works enclosed in these boxes are new and will be provided as part of this project.

END OF ADDENDUM No. 02

CCG Parry Sound

Job No. 13403

Voltage: 120 / 208

Ph/Wire: 3/4

Fed from: LP-ED (EXISTING)

Panel Schedule
LP-EDA (NEW)

Panel: LP-EDA (NEW)
Date: September 30, 2016
Panel Mains: 60A
Mounting: Surface
Tub Type: Single
Location: Telecom & Electronics 210
Main Breaker: 100A-3P

BRKR	*	DESCRIPTION	C [W]	d.f.	D [W]	cct	bus	cct	D [W]	d.f.	C [W]	DESCRIPTION	*	BRKR
					0	1	a	2	75	0.8	100	Motorized Dampers		15A-1P
					0	3	b	4	600	0.5	1200	Pipe Heat Tracing		15A-2P
					0	5	c	6	600	0.5	1200			
					0	7	a	8	0	1				
					0	9	b	10	0	1				
					0	11	c	12	0	1				
					0	13	a	14	0	1				
					0	15	b	16	0	1				
				1	0	17	c	18	0	1				
				1	0	19	a	20	0	1				
				1	0	21	b	22	0	1				
				1	0	23	c	24	0	1				

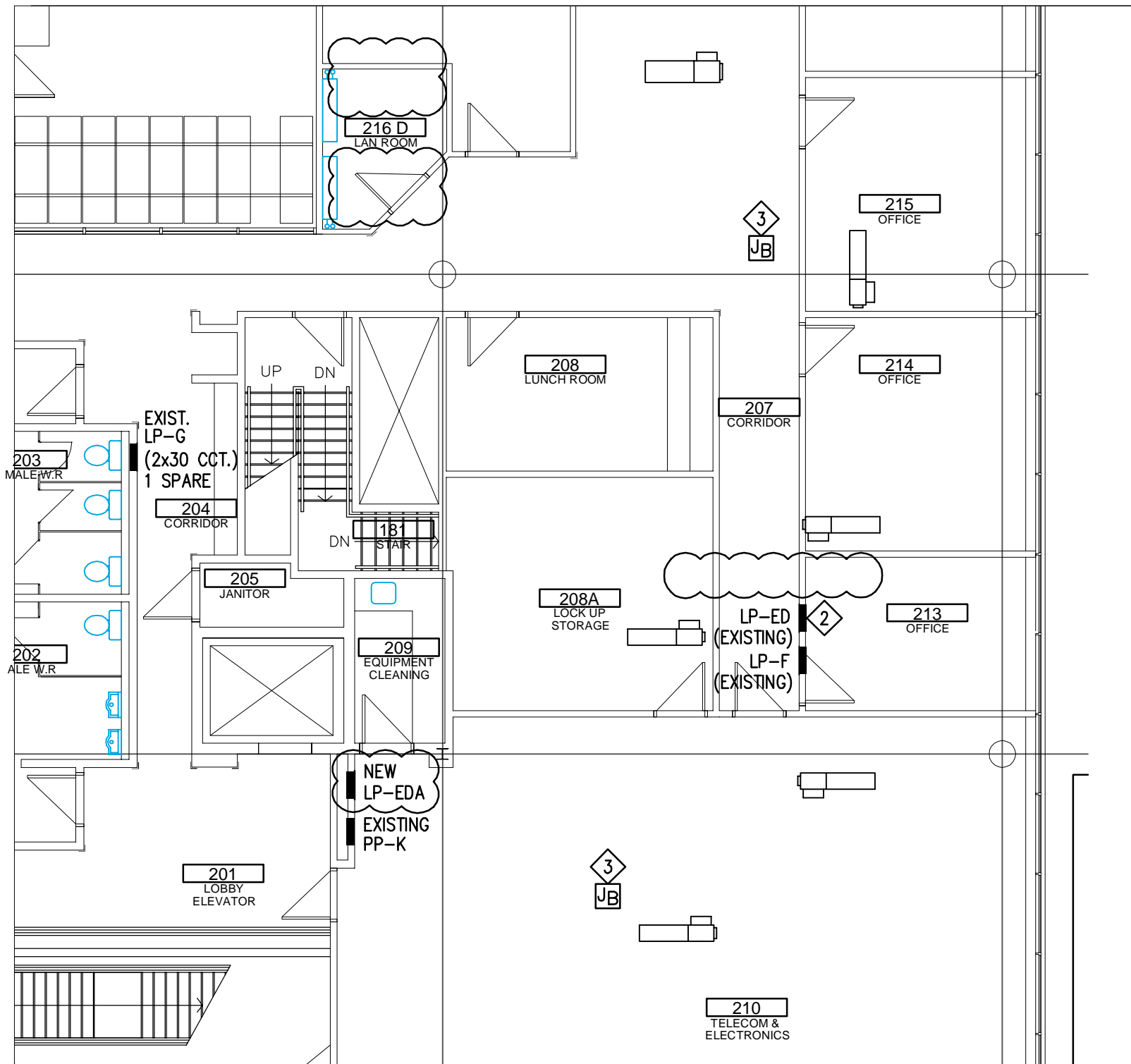
CONNECTED 'A'	100 W
CONNECTED 'B'	1200 W
CONNECTED 'C'	1200 W

75 W	DEMAND 'A'
600 W	DEMAND 'B'
600 W	DEMAND 'C'

Notes:

Remarks:

TOTAL DEMAND AMPS	3.5	A
TOTAL CONNECTED LOAD	2.5	kW
TOTAL DEMAND LOAD	1.3	kW



CROSSEY
ENGINEERING
LTD.

2255 Sheppard Avenue. E.
Suite E-331
North York, On M2J 4Y1
(416)497.3111 fax (416)497.7210

Seal

1	ADD E-01	OCT. 21/16
no.	revision	date

PARRYS OUND CANADIAN COAST GUARD BASE

project

SECOND FLOOR
ADMIN WING
ELECTRICAL LAYOUT

title

MC	OCT. 21/16
drawn	date

NN	13403
checked by	job no.

N.T.S.	E-201
scale	ref. no.

SKE-201x01	
drawing no.	rev. no.