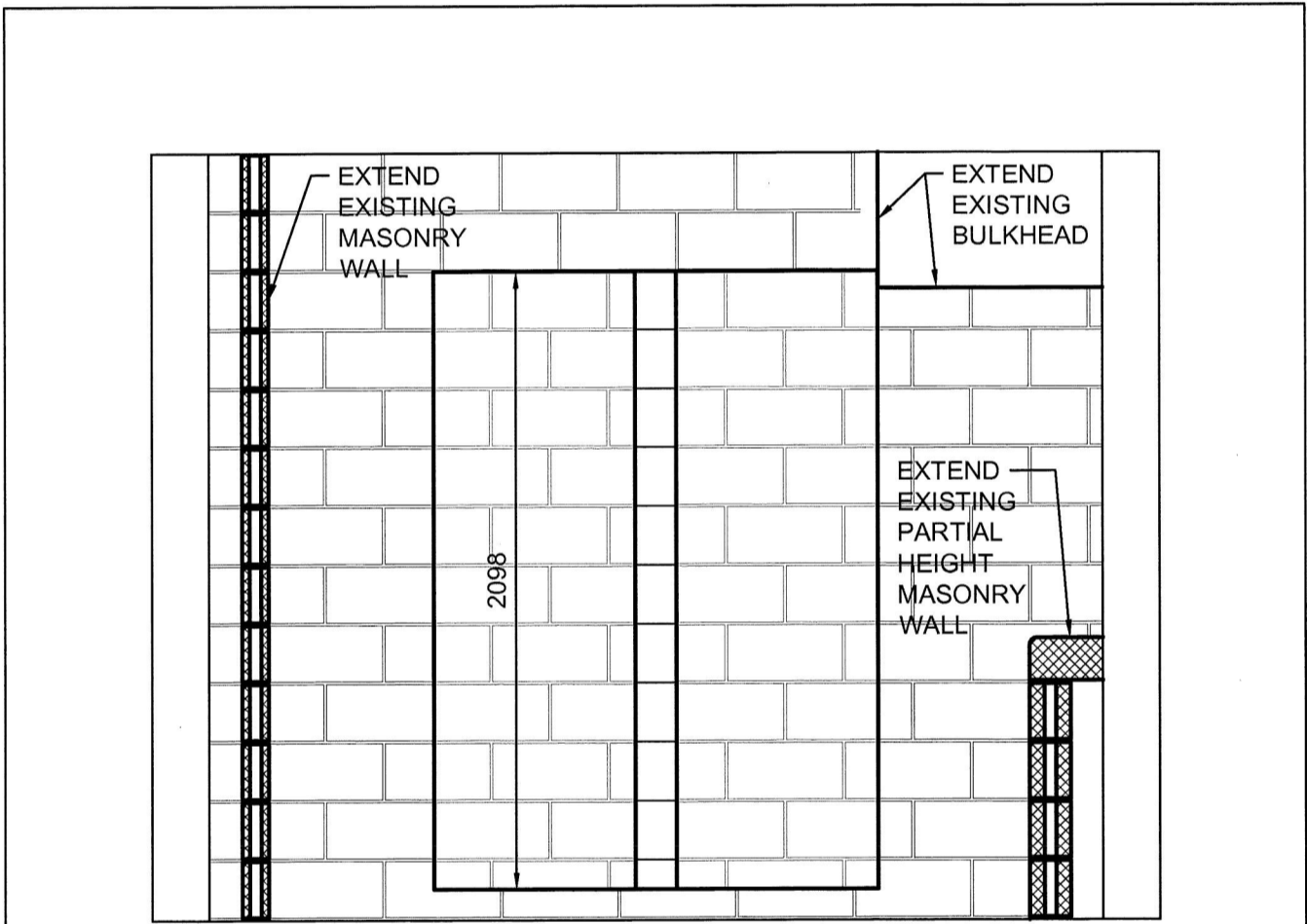
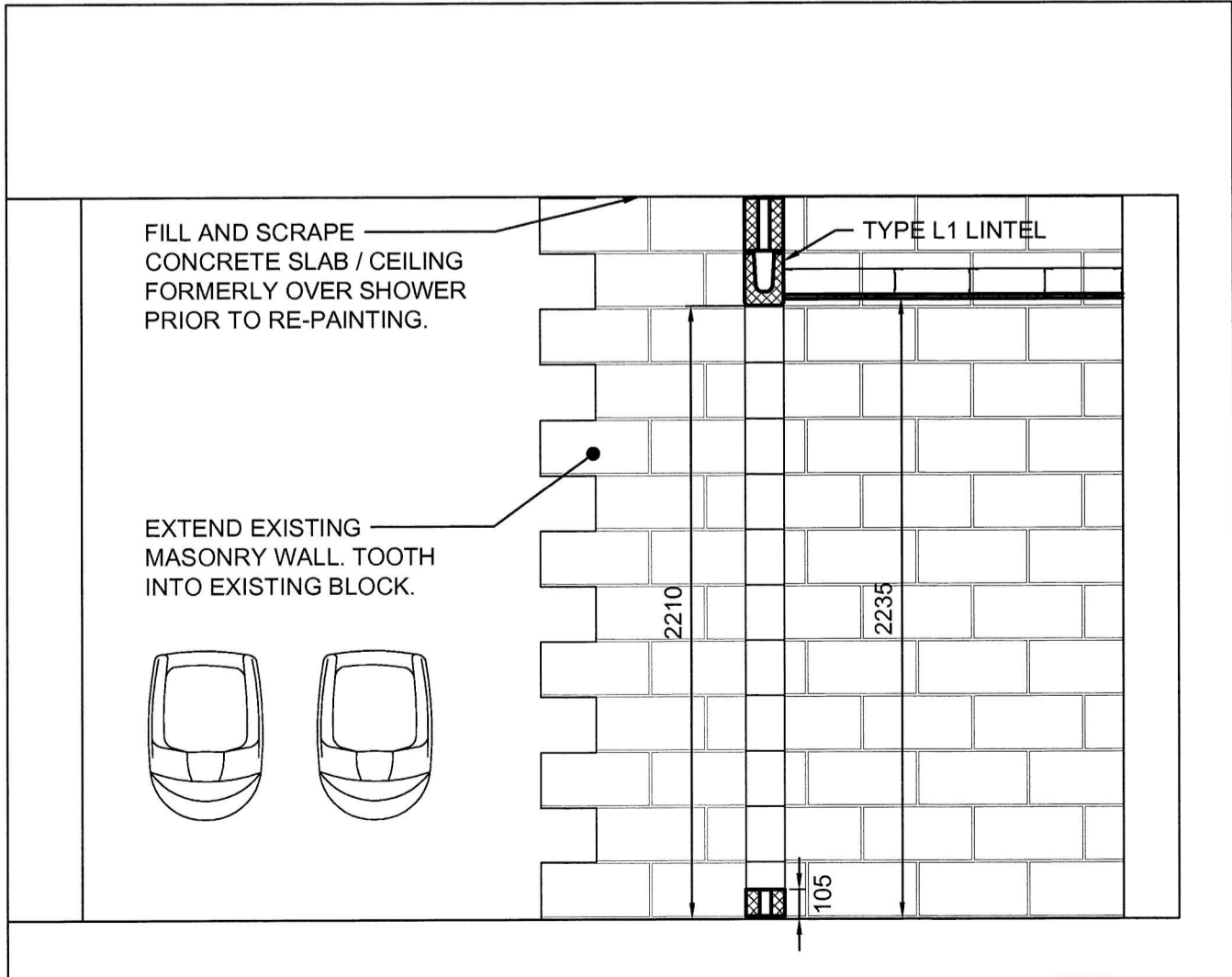


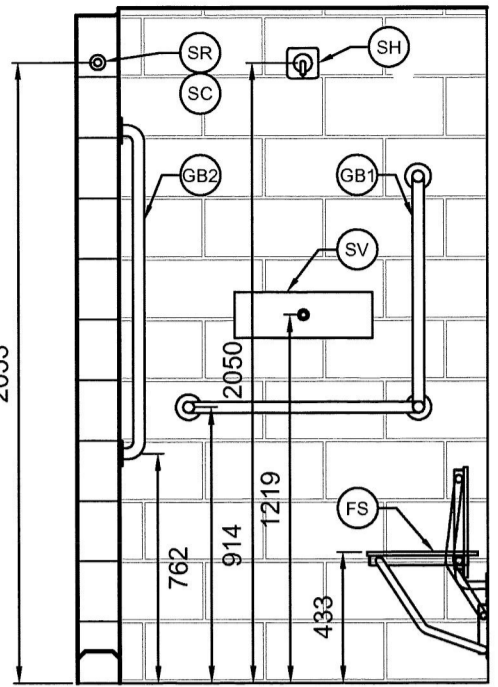
1 SHOWER AREA PLAN
SCALE: 1:25



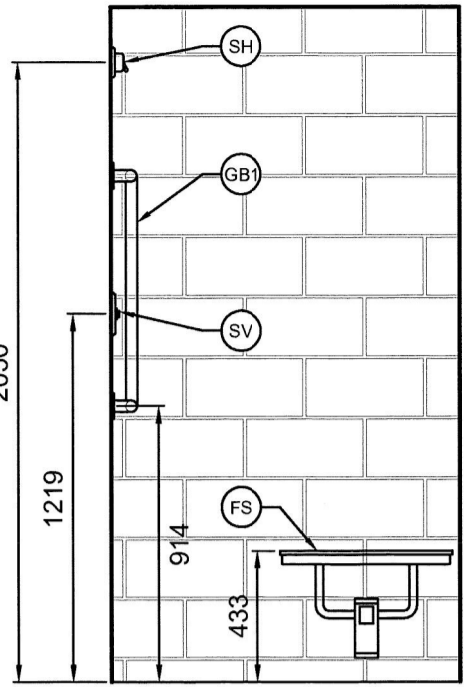
2 SECTION
SCALE: 1:25



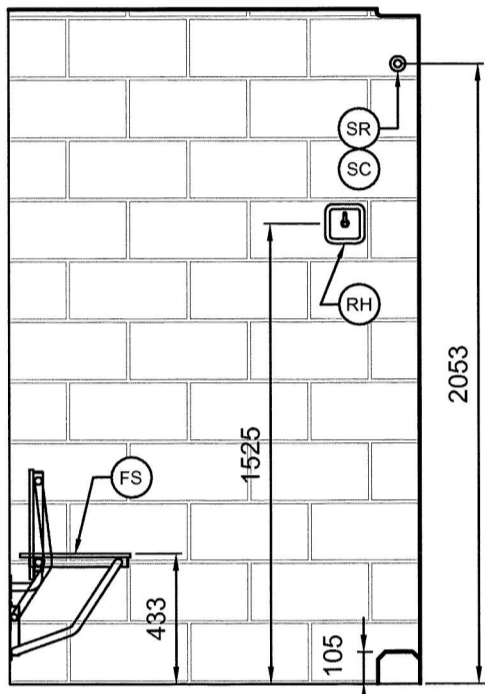
3 SECTION
SCALE: 1:25



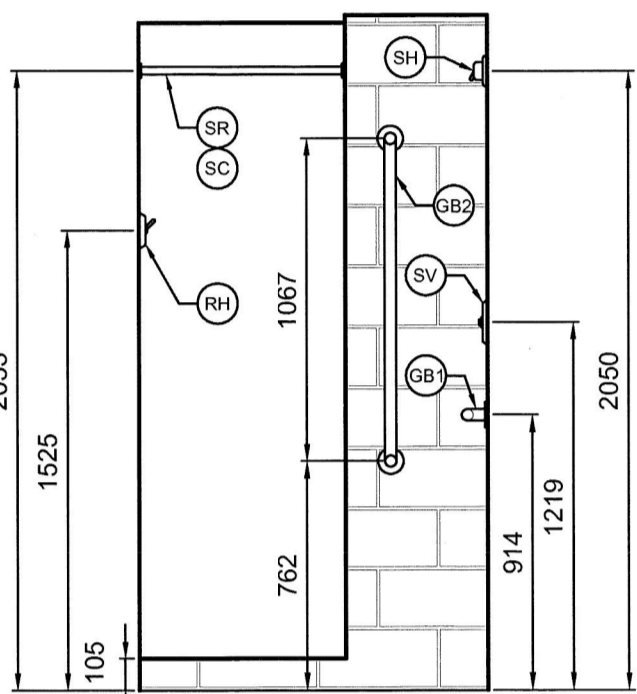
ELEVATION A



ELEVATION B

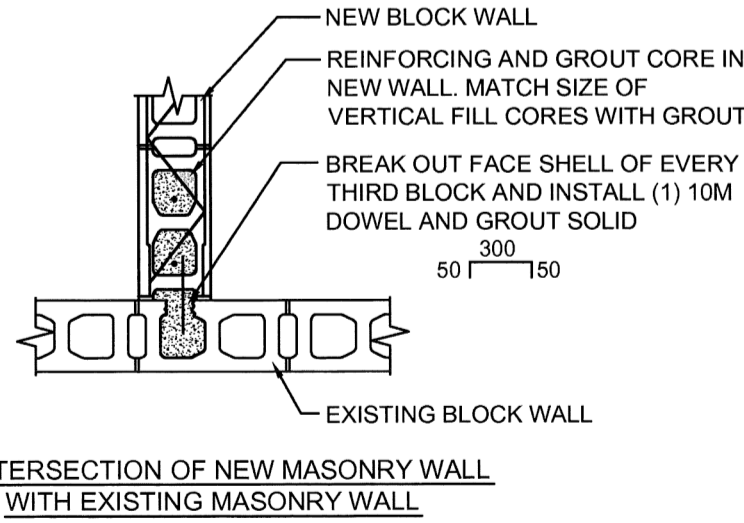


ELEVATION C

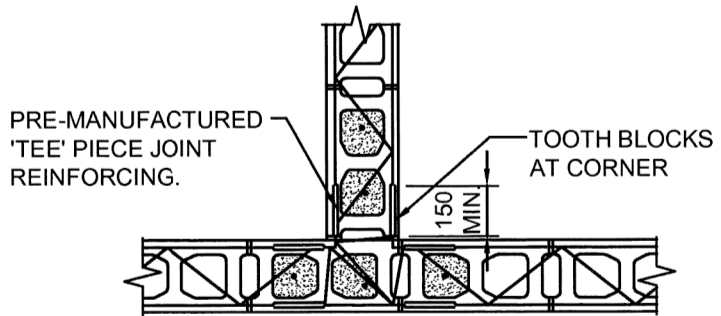


ELEVATION D

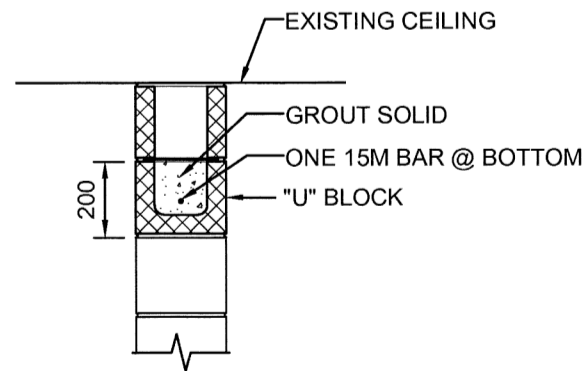
4 SHOWER ROOM ELEVATIONS
SCALE: 1:25



5 TYPICAL MASONRY DETAILS
SCALE: N.T.S.



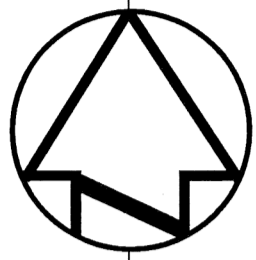
T INTERSECTION OF NEW MASONRY WALLS



LINTEL - L1

- LEGEND TO DETAILS:
- FS FOLDING SHOWER SEAT, 400mm x 572mm.
 - GB1 762mm x 762mm 90 DEGREE GRAB BAR.
 - GB2 1067mm VERTICAL GRAB BAR.
 - RH COLLAPSIBLE ROBE HOOK.
 - SC SHOWER CURTAIN, 1065mm x 1828mm.
 - SH SHOWER HEAD, REFER TO MECHANICAL.
 - SR SHOWER CURTAIN ROD WITH SHOWER CURTAIN.
 - SV SHOWER CONTROL, REFER TO MECHANICAL.

Public Works and
Government Services Canada
Travaux publics et
Services gouvernementaux Canada



Project North



Professional Seal

2	ISSUED FOR TENDER	2016/01/15
1	50% CLIENT REVIEW	2015/11/19
Revision		Date

Do not scale drawings.
Verify all dimensions and conditions on site and immediately
notify the Departmental Representative of all discrepancies.

J.L.Richards
ENGINEERS · ARCHITECTS · PLANNERS
JLR PROJECT NUMBER: 26880

project title
titre du projet
REPAIR SHOWERS IN LIVING
UNITS F-32S
COLLINS BAY INSTITUTION
FRONTENAC INSTITUTION
1455 BATH ROAD, KINGSTON, ONTARIO

drawing title
titre du dessin
SHOWER AREA
PLAN, SECTIONS
AND ELEVATIONS

drawn by
dessiné par JGBS

designed by
conçu par RR

approved by
approuvé par

bid
offre project manager
administrateur de projets

project date
date du projet 2015-06-25

project no.
no. du projet R.073539.001

drawing no.
dessiné no. A02