

ELECTRICAL ANNOTATION AND SYMBOLS

DEVICE

	LIGHTING FIXTURE, CEILING OR PENDANT MOUNTED, FIXTURE TYPE XX
	LIGHTING FIXTURE, RECESSED MOUNTED, FIXTURE TYPE XX
	LIGHTING FIXTURE, SURFACE OR WALL MOUNTED - STRIP
	LIGHTING FIXTURE, CEILING MOUNTED
	LIGHTING FIXTURE, RECESSED MOUNTED
	EXIT LIGHTING WALL MOUNTED ON EMERGENCY POWER, LINE INDICATES FACE OF SIGN
	EXIT LIGHTING CEILING MOUNTED ON EMERGENCY POWER, LINE INDICATES FACE OF SIGN
	EXIT LIGHTING WITH DIRECTIONAL ARROWS CEILING MOUNTED ON EMERGENCY POWER
	EXIT LIGHTING WITH DIRECTIONAL ARROWS WALL MOUNTED ON EMERGENCY POWER
	LIGHTING FIXTURE TYPE XX (REFER TO LIGHTING FIXTURE SCHEDULE)
	LIGHT SWITCH
	LIGHT SWITCH C/W DIMMING FOR FIXTURES WITH DIMMING CAPABILITIES
	LOW VOLTAGE LIGHT SWITCH
	OCCUPANCY SENSOR - CEILING MOUNTED
	OCCUPANCY SENSOR - WALL MOUNTED C/W MOUNTED SWITCH AND DIMMERS WHERE REQUIRED
	OCCUPANCY SENSOR - WALL MOUNTED WITH DIMMING CAPABILITIES

LIGHTING AND SWITCHING

ELECTRICAL ANNOTATION AND SYMBOLS

DEVICE

	15A 120V DUPLEX RECEPTACLE
	15A 120V ABOVE COUNTER DUPLEX RECEPTACLE
	15A 120V GROUND FAULT CIRCUIT INTERRUPTER DUPLEX RECEPTACLE
	15A 120V GROUND FAULT CIRCUIT INTERRUPTER DUPLEX RECEPTACLE ABOVE COUNTER
	SPECIAL RECEPTACLE AS INDIVIDUALLY NOTED
	WALL MOUNTED HARD-WIRED DIRECT CONNECTION TO SYSTEM FURNITURE, FOR POWER CONNECTION PROVIDE: A DOUBLE GANG BOX C/W POWER CIRCUITS NOTED, STAINLESS STEEL COVERPLATE, CONNECT INTO THE FURNITURE SYSTEM THROUGH LIQUID-TIGHT FLEX CONDUIT, FOR COMMUNICATION CABLING PROVIDE: A DOUBLE GANG BOX C/W STAINLESS STEEL COVERPLATE, OPENING WITH GROMMET AND CONDUIT (SIZE TO SUIT) UP TO NEAREST CABLE TRAY, FOR PROTECTION OF COMMUNICATION CABLES, PROVIDE BLACK, SPLIT LOOM TUBING SIZED TO SUIT.
	FLOOR MOUNTED FURNITURE FEED, USE SPECIFIED FLOOR MONUMENT AND PROVIDE SEPARATE EMT CONDUITS THROUGH CEILING SPACE BELOW FOR POWER AND COMMUNICATION SYSTEMS, SIZED TO SUIT APPLICATION, OR AS NOTED ON PLANS.
	MOTOR WITH NON-FUSIBLE DISCONNECT
	DIRECT CONNECTION
	STANDARD 100mm OCTAGONAL JUNCTION BOX (MINIMUM UNLESS NOTED OTHERWISE)
	STANDARD BACKBOX, VARYING GANGS
	NON-FUSIBLE DISCONNECT
	FUSIBLE DISCONNECT
	MECHANICAL EQUIPMENT TAG
	120/208V PANEL, SURFACE MOUNTED
	120/208V PANEL, RECESSED MOUNTED
	277/480V OR 347/600V PANEL SURFACE MOUNTED
	277/480V OR 347/600V PANEL RECESSED MOUNTED
	OTHER PANEL AS SPECIFIED, SURFACE MOUNTED
	OTHER PANEL AS SPECIFIED, RECESSED MOUNTED

POWER AND DISTRIBUTION

ELECTRICAL ANNOTATION AND SYMBOLS

DEVICE

	FIRE ALARM PULL STATION
	FIRE ALARM VISUAL STROBE
	FIRE ALARM BELL
	ACCESS CONTROL DEVICE (CARD READER)
	DOOR MONITOR SWITCH
	ELECTRIC DOOR STRIKE
	DATA/VOICE OUTLET, ROUGH-IN ONLY
	DATA/VOICE OUTLET, ABOVE COUNTER, ROUGH-IN ONLY
	DATA OUTLET
	SPEAKER, SOUND MASKING SYSTEM, CEILING MOUNTED
	REQUEST TO EXIT DEVICE (ROUGH-IN ONLY)

FIRE ALARM SYSTEM, SECURITY AND COMMUNICATIONS

ELECTRICAL ANNOTATION AND SYMBOLS

DEVICE

	A.F.F. ABOVE FINISHED FLOOR
	CONDUIT
	COMMUNICATIONS
	C/W COMPLETE WITH
	EXISTING TO REMAIN
	EXISTING TO BE DEMOLISHED
	EMERGENCY
	EXISTING TO BE RELOCATED
	PANEL
	RELOCATED TO NEW POSITION
	WEATHER PROOF

MISCELLANEOUS AND ABBREVIATIONS

	REVISION SYMBOL (NUMBER INDICATES REVISION NO.)
	KEY NOTE TAG
	EQUIPMENT/DETAIL DESIGNATION (NUMBER INDICATED ON DETAIL)

DRAWING LIST

E0.01	ELECTRICAL LEGENDS AND SPECIFICATION
WEST-E1.01	ELECTRICAL DEMOLITION PLAN
WEST-E2.01	ELECTRICAL PLAN
EAST-E2.02	ELECTRICAL PLAN
E6.01	ELECTRICAL DETAILS

LIGHTING FIXTURE SCHEDULE:

TYPE	DESCRIPTION	VOLTS	LAMPS	REMARKS
A1	MATCH EXISTING POTLIGHTS	120V	LAMP TO MATCH EXISTING	
A2	RECESSED DOWNLIGHT 150mm, SEMI-SPECULAR REFLECTOR, 16 GAUGE GALVANIZED STEEL CONSTRUCTION, TOOL-LESS POST-INSTALL ADJUSTMENTS, DIMMABLE	120V	LED 2000 LUMENS	
B1	UNDER CABINET LIGHTING HEAVY GAUGE ALUMINUM HOUSING WITH 21mm HEIGHT, WHITE FINISH, FROSTED LENS.	120V	LED COLOUR TEMP TO MATCH B2	COORDINATE LENGTH TO SUIT FURNITURE/MILLWORK
B2	SUSPENDED LINEAR PENDANT UP/DOWN	120V	1X54W T5HO	MATCH EXISTING MAKE AND MODEL
B3	305X1220 T-BAR MOUNTED LENSED FLUORESCENT TROFFER DIE FORMED COLD ROLLED STEEL CONSTRUCTION.	120V	1x54W	
E1	EXIT-SORTIE EXIT SIGN - EDGE LIT ACRYLIC	120V	LED	MATCH EXISTING TYPE

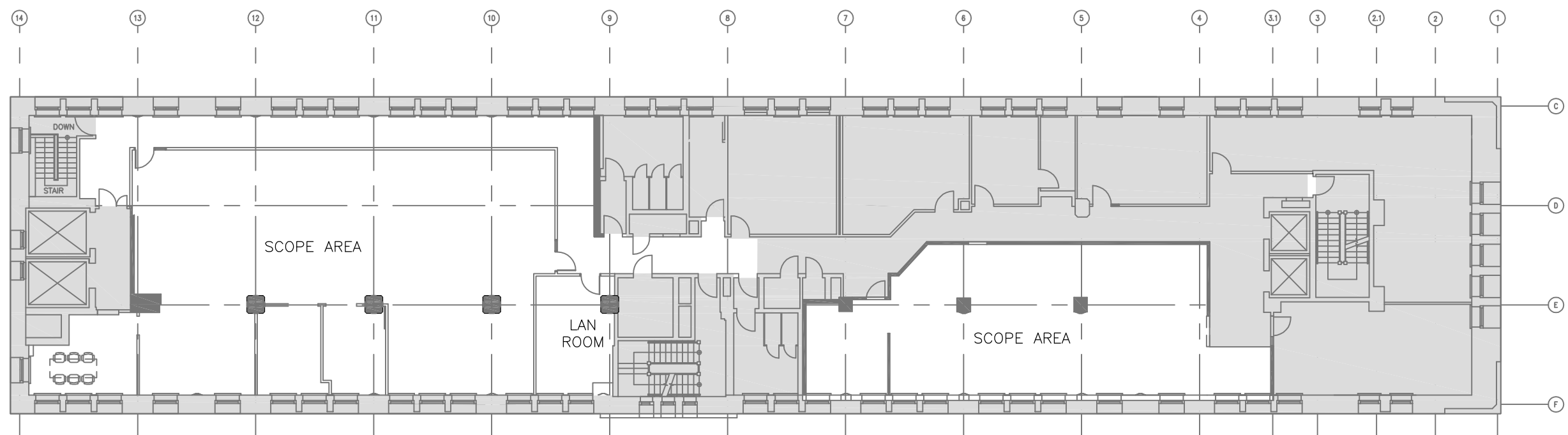
MECHANICAL EQUIPMENT SCHEDULE

TAG	UNIT DESCRIPTION	SIZE (W)	VOLTAGE PHASE	SUPPLY OF DEVICE M E	SUPPLY OF DISCONNECT M E	REMARKS
EF-1	EXHAUST FAN	48W	120V/1ø	—	—	X
DWH-1	DOMESTIC WATER HEATER	2255W	208V/1ø	—	—	X
AC-1	AIR CONDITION	—	—	—	—	X ELECTRICAL TO PROVIDE CONDUIT AND WIRING BETWEEN INDOOR UNIT(AC-1) AND OUTDOOR UNIT(CU-1). COORDINATE EXACT REQUIREMENTS WITH MECHANICAL TRADES.
CU-1	CONDENSING UNIT	MCA 24.5A MOCB 40A	208V/1ø	—	—	X

MOUNTING : Flush VOLTAGE 120/208 V BUS RAT. : 225									
Project: MAIN BRK: A									
Panel Loc: ELEC ROOM WIRE CIRCUITS 42									
Print Date: Sep 2, 2016 04:12 PM									
PRINT FINAL PANEL									
CCT	LOAD	KVA	BRK SIZE	P H	BRK SIZE	KVA	LOAD	CCT	
No	TYPE Description							No	
1	REC. MEETING ROOM REC	0.50	15A	A	15A	1.00	REC. PRINTER	2	
3	REC. SHARED EQUIP. REC	0.50	15A	B	15A	0.50	REC. OFFICE REC	4	
5	REC. LOUNGE OVER COUNTER GFI	0.50	15A	C	15A	0.50	REC. LOUNGE OVER COUNTER GFI	6	
7	REC. LOUNGE OVER COUNTER GFI	0.50	15A	A	15A	1.00	REC. MICROWAVE	8	
9	REC. OPEN OFFICE REC	0.50	15A	B	15A	1.10	HTR. DWH-1	10	
11	OTH. TERMINAL BOX 6-28	0.50	15A	C	2P	1.10	HTR. DWH-1	12	
13	OTH. SOUND MASKING CONTROL PANEL	0.50	15A	A	15A	0.50	REC. SHARED EQUIP. REC	14	
15	REC. OFFICE REC	0.50	15A	B	15A	0.50	REC. MEETING RM FLOOR FEED	16	
17	MTR. EF-1	0.50	15A	C			EXISTING LOADS	18	
19	EXISTING LOADS			A			EXISTING LOADS	20	
21	EXISTING LOADS			B			EXISTING LOADS	22	
23	EXISTING LOADS			C			EXISTING LOADS	24	
25	EXISTING LOADS			A			EXISTING LOADS	26	
27	EXISTING LOADS			B			EXISTING LOADS	28	
29	EXISTING LOADS			C			EXISTING LOADS	30	
31	EXISTING LOADS			A			EXISTING LOADS	32	
33	EXISTING LOADS			B			EXISTING LOADS	34	
35	EXISTING LOADS			C			EXISTING LOADS	36	
37	EXISTING LOADS			A			EXISTING LOADS	38	
39	EXISTING LOADS			B			EXISTING LOADS	40	
41	EXISTING LOADS			C			EXISTING LOADS	42	

GENERAL NOTE

1. PROVIDE CIRCUIT FROM ADJACENT PANEL PNL-6D IF INSUFFICIENT CIRCUITS WITHIN PNL-6C.

1 KEYPLAN
E0.01 SCALE:

Public Works and
Government Services Canada
Travaux publics et
Services gouvernementaux Canada

DIALOG

Stamp



METRIC

THIS DRAWING IS COPYRIGHTED AND MUST NOT BE USED, REPRODUCED, OR REVISED WITHOUT WRITTEN PERMISSION.

ALL DIMENSIONS ARE IN MILLIMETERS UNLESS OTHERWISE NOTED. VERIFY DIMENSIONS. DO NOT SCALE THIS DRAWING.

REPORT INCONSISTENCIES AND OMISSIONS TO THE DEPARTMENTAL REPRESENTATIVE FOR CLARIFICATION BEFORE COMMENCING WITH THE WORK.

DEVIATIONS FROM THE CONTRACT DOCUMENTS WITHOUT WRITTEN APPROVAL FROM THE DEPARTMENTAL REPRESENTATIVE ARE SUBJECT TO CORRECTION AT THE CONTRACTOR'S EXPENSE.

ARCHITECTURAL / INTERIOR DESIGN

DIALOG
2 BLOOR ST. EAST, SUITE 1100
TORONTO, ON
Tel: (416)966-0220 Fax: (416)966-0223

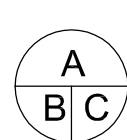
MECHANICAL ENGINEER

DIALOG
2 BLOOR ST. EAST, SUITE 1100
TORONTO, ON
Tel: (416)966-0220 Fax: (416)966-0223

ELECTRICAL ENGINEER

DIALOG
2 BLOOR ST. EAST, SUITE 1100
TORONTO, ON
Tel: (416)998-0220 Fax: (416)966-0223

Do not scale drawings.
Verify all dimensions and conditions on site and immediately notify the
Departmental Representative of all discrepancies.



- A Detail No.
No. du detail
B drawing no. - where detail required
dessin no. - ou detail exige
C drawing no. - where detailed
dessin no. - ou detaillé

project title
titre du projet

DOMINION PUBLIC BUILDING

457 RICHMOND STREET
LONDON, ONTARIO

6TH FLOOR TENANT RELOCATION & OFFICE FIT UP

drawing title
titre du dessin

ELECTRICAL LEGENDS AND SPECIFICATION

drawn by
dessiné par

DD

designed by
conçu parapproved by
approuvé par

RT

bid
offre

DA

project manager
administrateur
de projetsproject date
date du projet

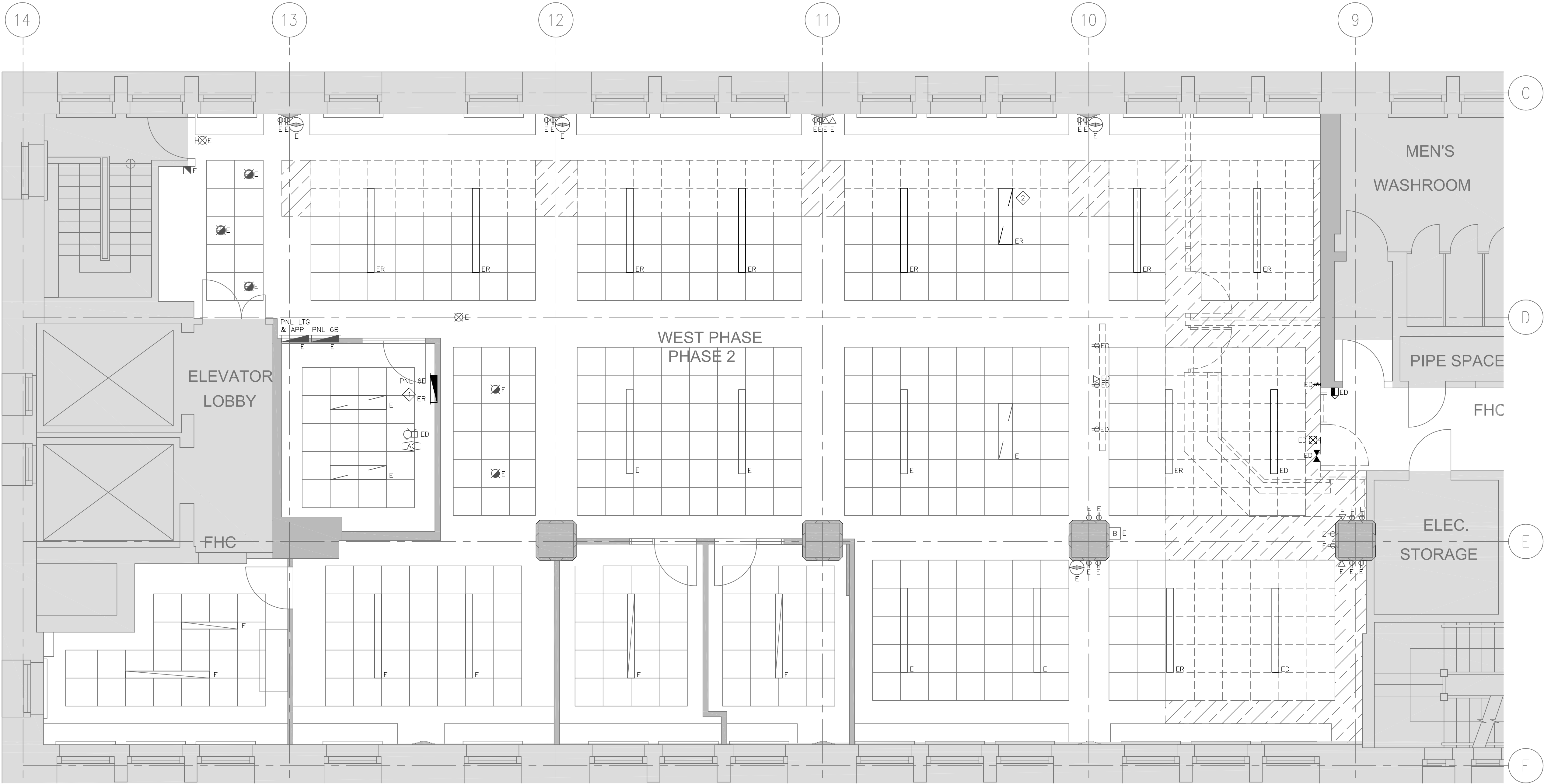
2016-09-02

project no.
no. du projet

R.079143.042

drawing no.
dessiné no.

E0.01



KEYNOTES:

1 EXISTING PANEL TO BE RELOCATED, REFER TO DETAIL 2/WEST-E2.01. EXTEND AND SPLICE ALL INCOMING WIRING/CONDUIT AS NEEDED TO SUIT NEW PANEL LOCATION.

2 DISCONNECT LIGHT FIXTURE AND RELOCATE TO OPEN OFFICE R607. COORDINATE DISCONNECTION OF FIXTURE WITH DEPARTMENTAL REPRESENTATIVE.

1 ELECTRICAL DEMOLITION PLAN
E1.01 SCALE: 1:50

DIALOG



METRIC
THIS DRAWING IS COPYRIGHTED AND MUST NOT BE USED, REPRODUCED, OR REVISED WITHOUT WRITTEN PERMISSION.
ALL DIMENSIONS ARE IN MILLIMETERS UNLESS OTHERWISE NOTED. VERIFY DIMENSIONS. DO NOT SCALE THIS DRAWING.
REPORT INCONSISTENCIES AND OMISSIONS TO THE DEPARTMENTAL REPRESENTATIVE FOR CLARIFICATION BEFORE COMMENCING WITH THE WORK.
DEVIATIONS FROM THE CONTRACT DOCUMENTS WITHOUT WRITTEN APPROVAL FROM THE DEPARTMENTAL REPRESENTATIVE ARE SUBJECT TO CORRECTION AT THE CONTRACTOR'S EXPENSE.

ARCHITECTURAL / INTERIOR DESIGN
DIALOG
2 BLOOR ST. EAST, SUITE 1100
TORONTO, ON
Tel: (416)966-0220 Fax: (416)966-0223
MECHANICAL ENGINEER
DIALOG
2 BLOOR ST. EAST, SUITE 1100
TORONTO, ON
Tel: (416)966-0220 Fax: (416)966-0223
ELECTRICAL ENGINEER
DIALOG
2 BLOOR ST. EAST, SUITE 1100
TORONTO, ON
Tel: (416)998-0220 Fax: (416)966-0223

1	ISSUED FOR BID	2016-09-02
revision		date

Do not scale drawings.
Verify all dimensions and conditions on site and immediately notify the Departmental Representative of all discrepancies.

A	Detail No.
B	No. du detail
C	drawing no. - where detail required dessin no. - ou detail exige
	drawing no. - where detailed dessin no. - ou detaillé

project title
titre du projet
DOMINION PUBLIC BUILDING
457 RICHMOND STREET
LONDON, ONTARIO

6TH FLOOR TENANT RELOCATION & OFFICE FIT UP

drawing title
titre du dessin
ELECTRICAL DEMOLITION PLAN

drawn by
dessiné par DD

designed by
conçu par

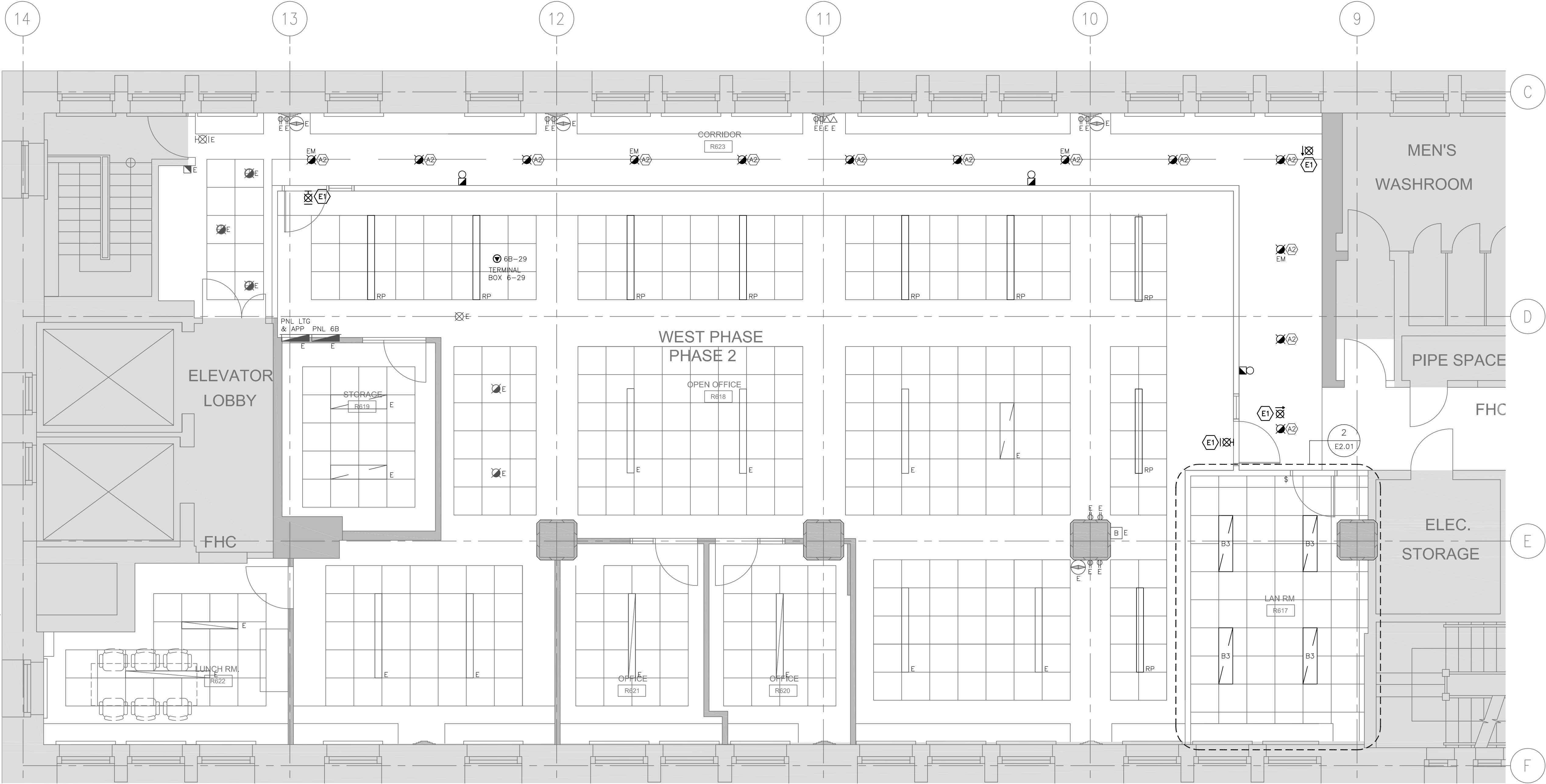
approved by
approuvé par RT

bid
offre DA project manager
administrateur de projets

project date
date du projet 2016-09-02

project no.
no. du projet R.079143.042

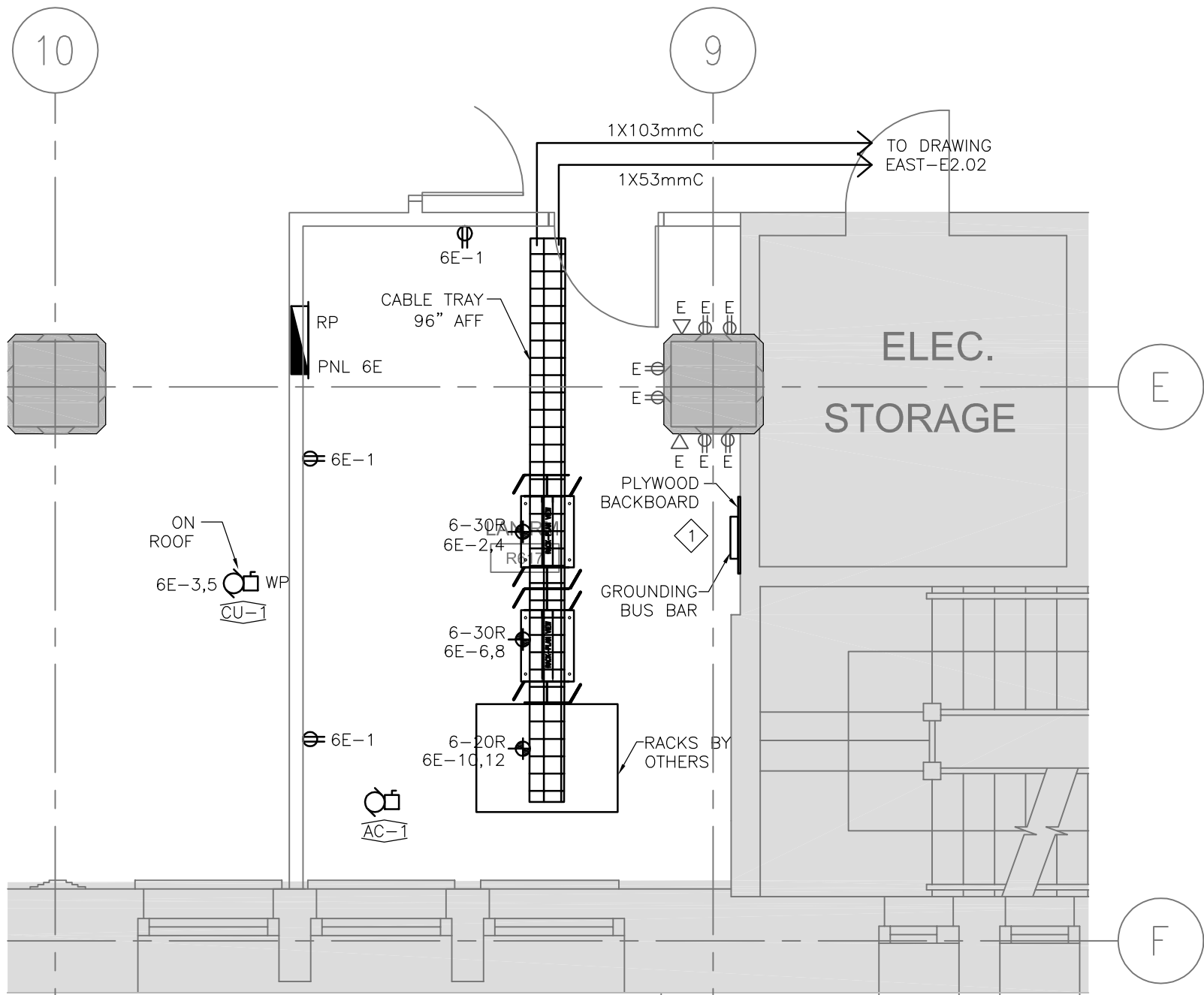
drawing no.
dessiné no. WEST-E1.01



GENERAL NOTES:

- CLEAN AND RE-LAMP ALL RELOCATED LIGHTING FIXTURES. REPLACE DAMAGED LENSES AND BALLASTS AS REQUIRED. RE-LAMP WITH CONSISTENT COLOUR TEMPERATURE.
- RE-UTILIZE EXISTING LIGHTING CIRCUITS UNLESS DENOTED OTHERWISE. CONTRACTOR TO VERIFY EXISTING CAPACITY OF LIGHTING CIRCUIT PRIOR TO INSTALLATION.
- RECONNECT LIGHTING TO EXISTING BUILDING LIGHTING RELAY PANELS TO MATCH EXISTING LIGHTING SCHEDULING.
- CONNECT EMERGENCY LIGHTS AND EXIT SIGNS TO THE EXISTING EMERGENCY LIGHTING CIRCUIT SERVING THIS AREA. VERIFY LOADING ON THE EXISTING CIRCUIT.

1 ELECTRICAL PLAN
E2.01 SCALE: 1:50



KEYNOTES:

- PROVIDE NEW TELECOM GROUND BUS BAR MOUNTED ON PLYWOOD. PROVIDE #6 INSULATED GREEN JACKET, STRANDED COPPER WIRE FROM GROUND BUS BAR TO BUILDING MAIN ELECTRICAL GROUND BUS. COORDINATE EXACT LOCATION OF MAIN ELECTRICAL GROUND BUS WITH DEPARTMENTAL REPRESENTATIVE.

2 LAN ROOM POWER LAYOUT
E2.01 SCALE: 1:50

1	ISSUED FOR BID	2016-09-02
revision		date

Do not scale drawings.
Verify all dimensions and conditions on site and immediately notify the
Departmental Representative of all discrepancies.

A	Detail No. No. du detail
B	drawing no. - where detail required dessin no. - où detail exigé
C	drawing no. - where detailed dessin no. - où détaillé

project title
titre du projet

DOMINION PUBLIC BUILDING

457 RICHMOND STREET
LONDON, ONTARIO

6TH FLOOR TENANT RELOCATION & OFFICE FIT UP

drawing title
titre du dessin

ELECTRICAL PLAN

drawn by
dessiné par DD

designed by
conçu par

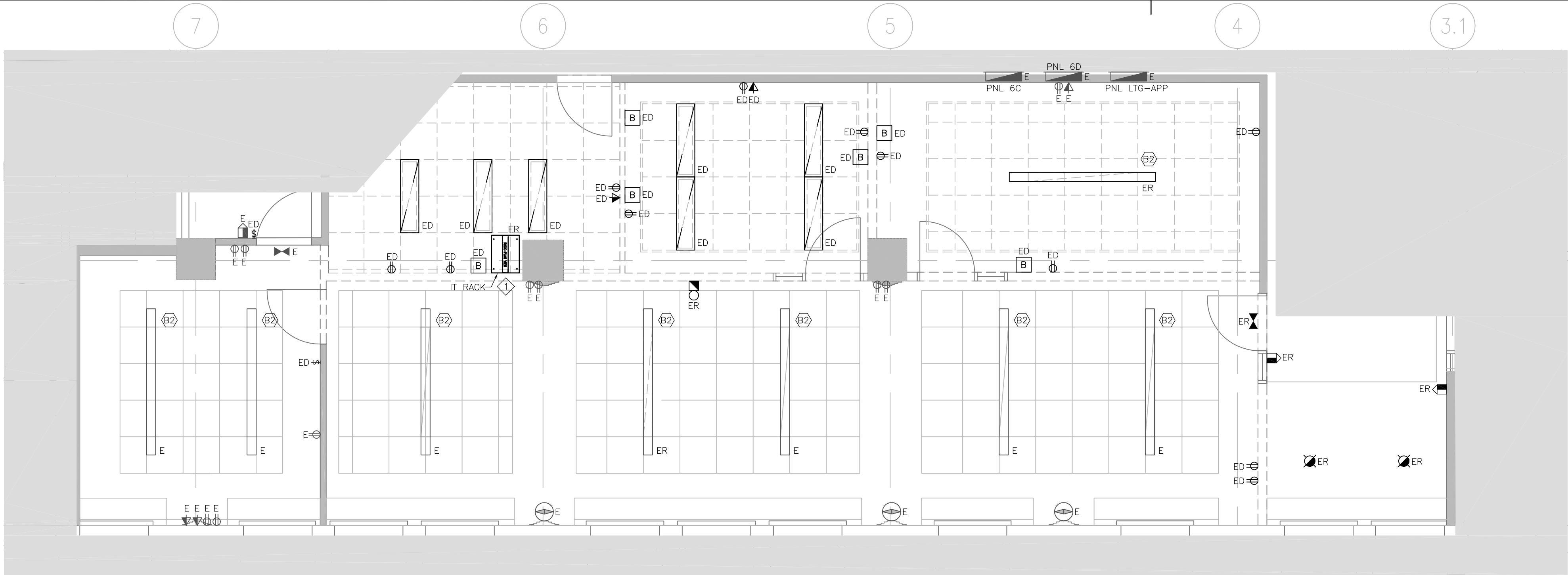
approved by
approuvé par RT

bid
offre DA project manager
administrateur de projets

project date
date du projet 2016-09-02

project no.
no. du projet R.079143.042

drawing no.
dessiné no. WEST-E2.01



GENERAL NOTES:

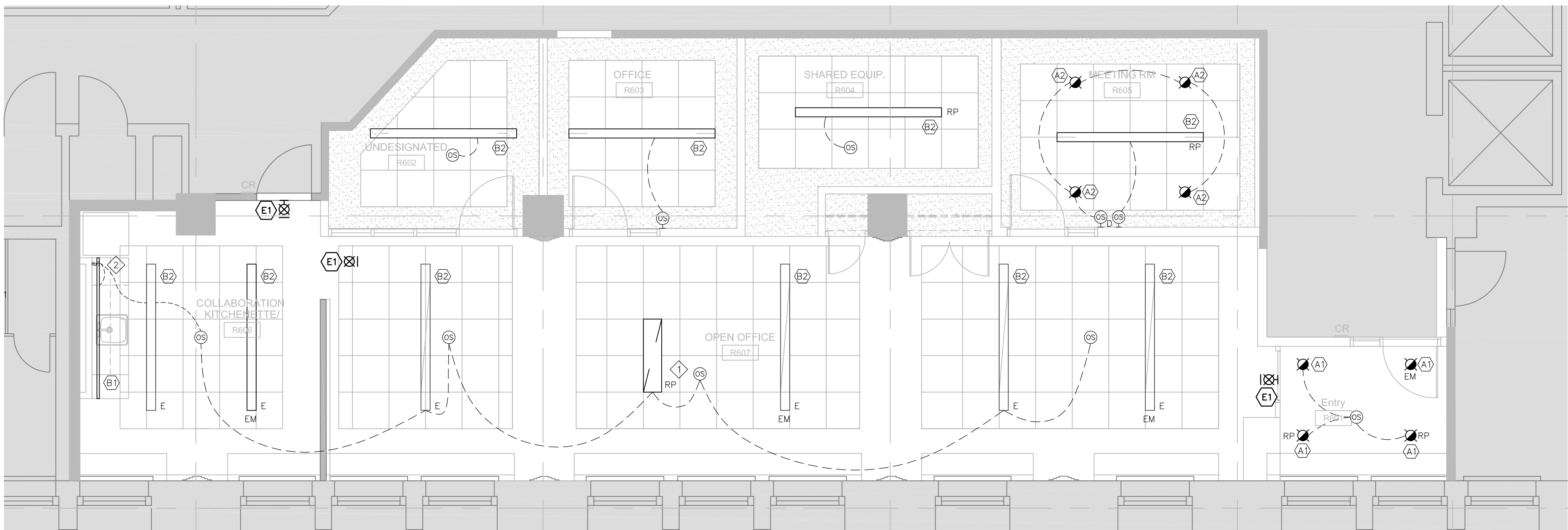
1. REFEED ALL EXISTING AND NEW COMMUNICATIONS CONDUITS TO EMPTY ABOVE NEAREST CABLE TRAY C/W PULLSTRING.

KEYNOTES:

- 1 RETURN LAN CABINET TO DEPARTMENTAL REPRESENTATIVE.

1 DEMOLITION PLAN

E2.02 SCALE: 1:50



GENERAL NOTES:

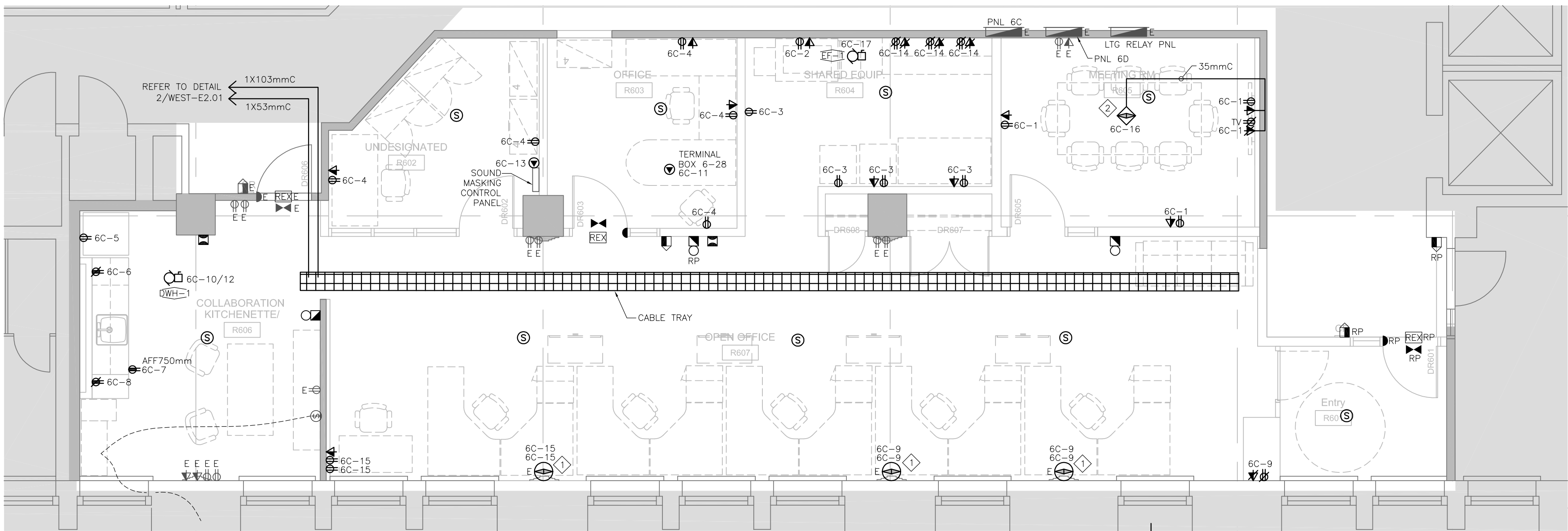
1. CLEAN AND RE-LAMP ALL EXISTING AND RELOCATED LIGHTING FIXTURES. REPLACE DAMAGED LENSES AND BALLASTS AS REQUIRED. RE-LAMP WITH CONSISTENT COLOUR TEMPERATURE.
2. RE-UTILIZE EXISTING LIGHTING CIRCUITS UNLESS DENOTED OTHERWISE. CONTRACTOR TO VERIFY EXISTING CAPACITY OF LIGHTING CIRCUIT PRIOR TO INSTALLATION.
3. RECONNECT LIGHTING TO EXISTING BUILDING LIGHTING RELAY PANELS TO MATCH EXISTING LIGHTING SCHEDULING.
4. CONNECT MINIMUM 1 FIXTURE WITHIN ROOMS R601, R606, AND R607 TO EXISTING EMERGENCY CIRCUIT.
5. CONNECT EMERGENCY LIGHTS AND EXIT SIGNS TO THE EXISTING EMERGENCY LIGHTING CIRCUIT SERVING THIS AREA. VERIFY LOADING ON THE EXISTING CIRCUIT.

KEYNOTES:

- 1 RELOCATED LED FIXTURE. REFER TO DRAWING WEST-E1.01.
- 2 CONNECT UNDER CABINET LIGHTING C/W WALL SWITCH TO OVERALL ROOM OCCUPANCY CONTROL SO THAT UNDER CABINET LIGHTING IS OVERRIDDEN TO TURN OFF WHEN ZONE IS VOLANT.

2 LIGHTING PLAN

E2.02 SCALE: 1:50



GENERAL NOTES:

1. RE-USE EXISTING POWER AND COMMUNICATIONS ROUGH-IN IN HERITAGE COLUMNS COORDINATE WITH ARCHITECTURAL DRAWINGS.
2. REFEED ALL EXISTING AND NEW COMMUNICATIONS CONDUITS TO NEAREST CABLE TRAY C/W PULLSTRING.
3. ALL COMMUNICATIONS SCOPE IS ROUGH-IN TO NEAREST CABLE TRAY. OWNERS OWN FORCES TO PROVIDE HORIZONTAL DISTRIBUTION CABLE, DEVICES AND TERMINATIONS.
4. CONTRACTOR TO CONFIRM AVAILABILITY OF CIRCUITS AT SITE WALKTHROUGH PRIOR TO PRICING. CIRCUITING '6C-XX' SHOWN IS FOR DESIGN INTENT PURPOSES. CONTRACTOR TO RE-UTILIZE EXISTING CIRCUITS MADE AVAILABLE AS PART OF THIS SCOPE OF WORK UNLESS DENOTED OTHERWISE.
5. CONTRACTOR SHALL SCAN SLAB PRIOR TO CUTTING. COORDINATE WITH DEPARTMENTAL REPRESENTATIVE.

KEYNOTES:

- 1 RE-USE EXISTING CHASE WITHIN COLUMN FOR NEW POWER WIRING. EXTEND COMMUNICATIONS CONDUIT TO NEAREST CABLE TRAY.
- 2 PROVIDE FIRE RATED, FLUSH MOUNTED 150mm POKE-THRU TYPE FURNITURE FEED. COORDINATE EXACT FLOOR BOX POSITION AND REQUIREMENTS WITH FURNITURE AND A/V PRODUCTS.

3 POWER AND SYSTEMS PLAN

E2.02 SCALE: 1:50

DIALOG

Stamp



METRIC

THIS DRAWING IS COPYRIGHTED AND MUST NOT BE USED, REPRODUCED, OR REVISED WITHOUT WRITTEN PERMISSION.

ALL DIMENSIONS ARE IN MILLIMETERS UNLESS OTHERWISE NOTED. VERIFY DIMENSIONS. DO NOT SCALE THIS DRAWING.

REPORT INCONSISTENCIES AND OMISSIONS TO THE DEPARTMENTAL REPRESENTATIVE FOR CLARIFICATION BEFORE COMMENCING WITH THE WORK.

DEVIATIONS FROM THE CONTRACT DOCUMENTS WITHOUT WRITTEN APPROVAL FROM THE DEPARTMENTAL REPRESENTATIVE ARE SUBJECT TO CORRECTION AT THE CONTRACTOR'S EXPENSE.

ARCHITECTURAL / INTERIOR DESIGN

DIALOG
2 BLOOR ST. EAST, SUITE 1100
TORONTO, ON
Tel: (416)966-0220 Fax: (416)966-0223

MECHANICAL ENGINEER

DIALOG
2 BLOOR ST. EAST, SUITE 1100
TORONTO, ON
Tel: (416)966-0220 Fax: (416)966-0223

ELECTRICAL ENGINEER

DIALOG
2 BLOOR ST. EAST, SUITE 1100
TORONTO, ON
Tel: (416)998-0220 Fax: (416)966-0223

1	ISSUED FOR BID	2016-09-02
revision		date

Do not scale drawings. Verify all dimensions and conditions on site and immediately notify the Departmental Representative of all discrepancies.

A	Detail No. No. du detail
B	drawing no. - where detail required dessin no. - ou detail exigé
C	drawing no. - where detailed dessin no. - ou détaillé

project title
titre du projet

DOMINION PUBLIC BUILDING

457 RICHMOND STREET
LONDON, ONTARIO

6TH FLOOR TENANT RELOCATION & OFFICE FIT UP

drawing title
titre du dessin

ELECTRICAL PLAN

drawn by
dessiné par

DD

designed by
conc par

approved by
approuvé par

RT

bid
offre

DA

project manager
administrateur
de projets

project date
date du projet

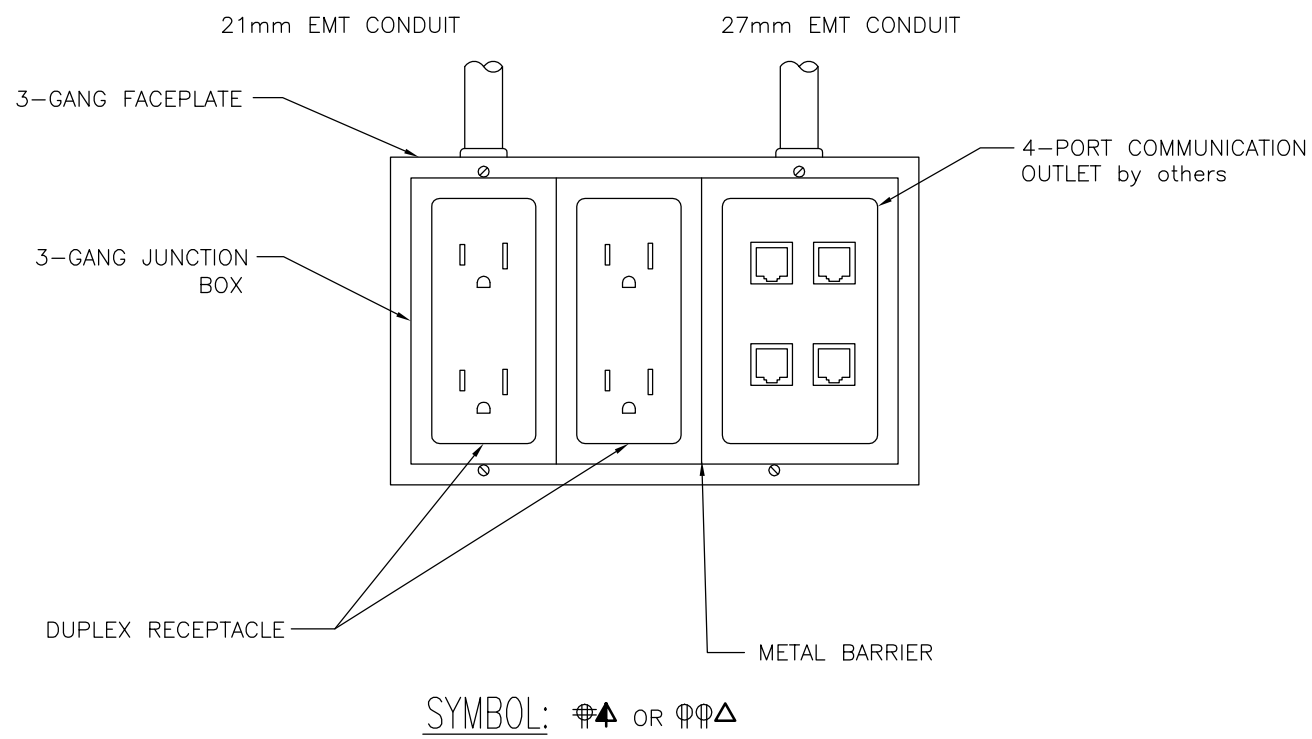
2016-09-02

project no.
no. du projet

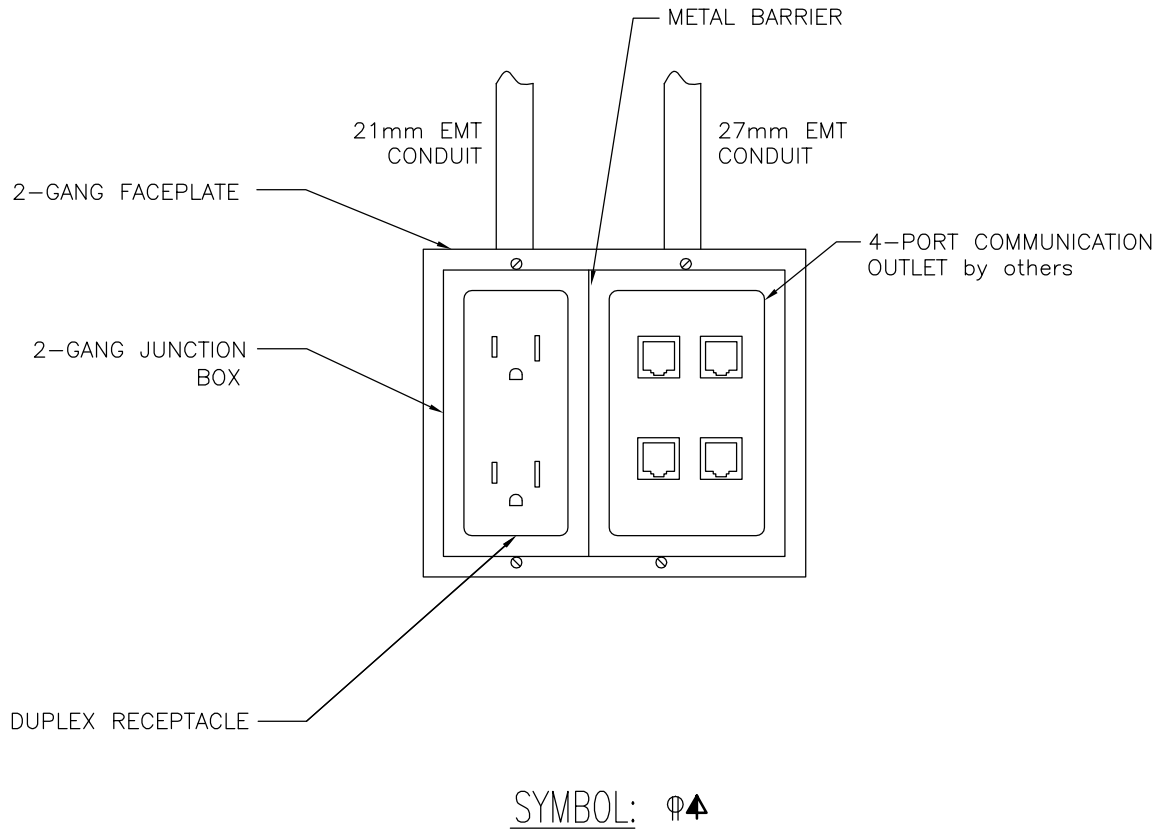
R.079143.042

drawing no.
dessiné no.

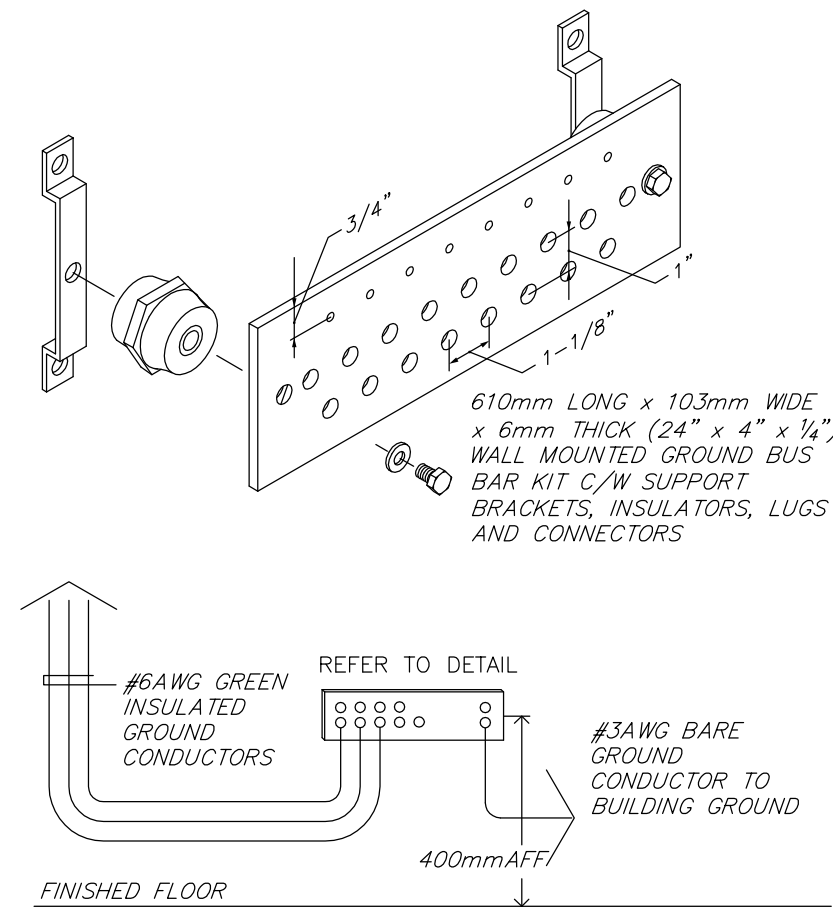
EAST-E2.02



1 TYPICAL WALL MOUNTED POWER AND DATA OUTLETS DETAIL
E6.01 SCALE: N.T.S

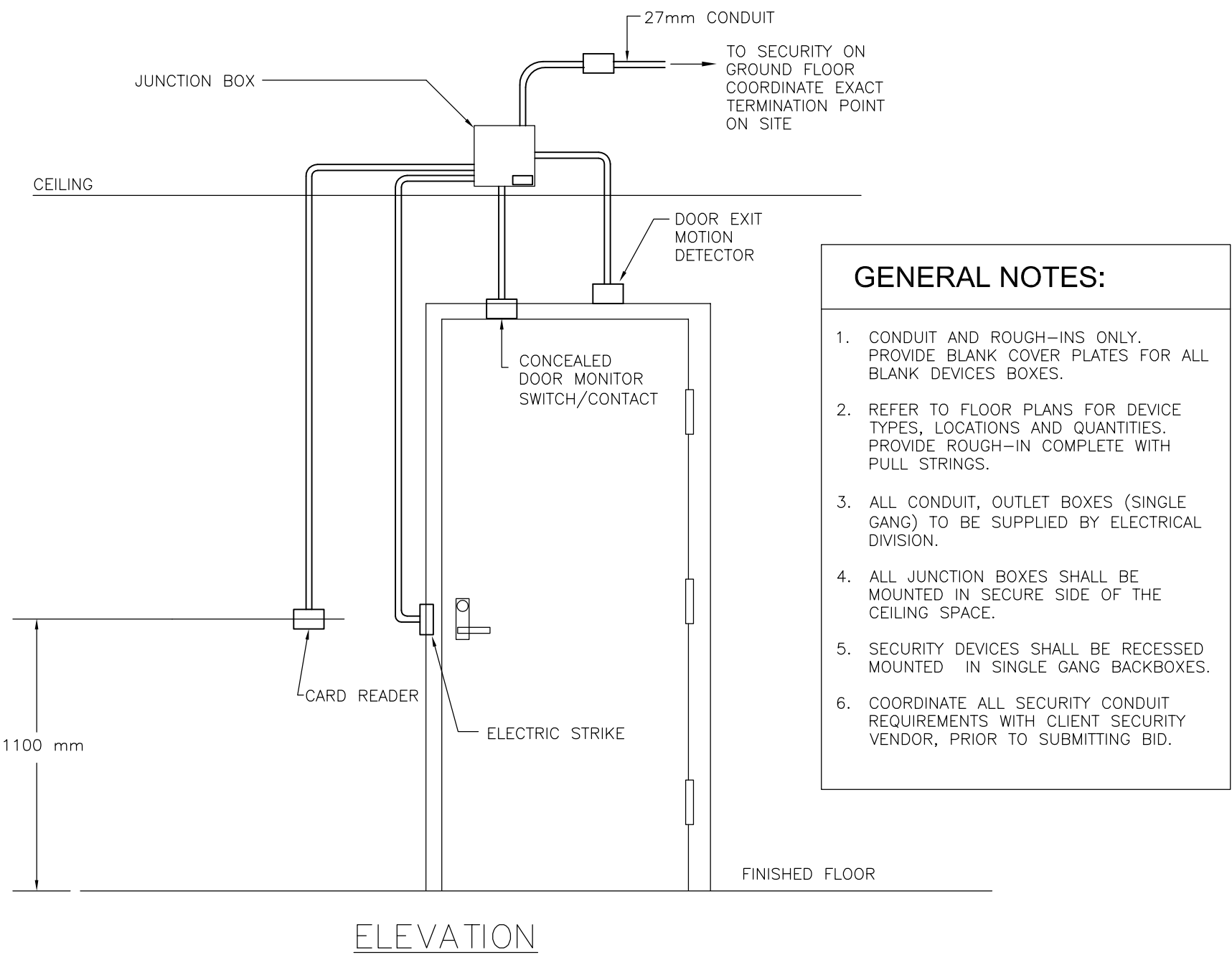


2 TYPICAL WALL MOUNTED POWER AND DATA OUTLETS
E6.01 SCALE: N.T.S

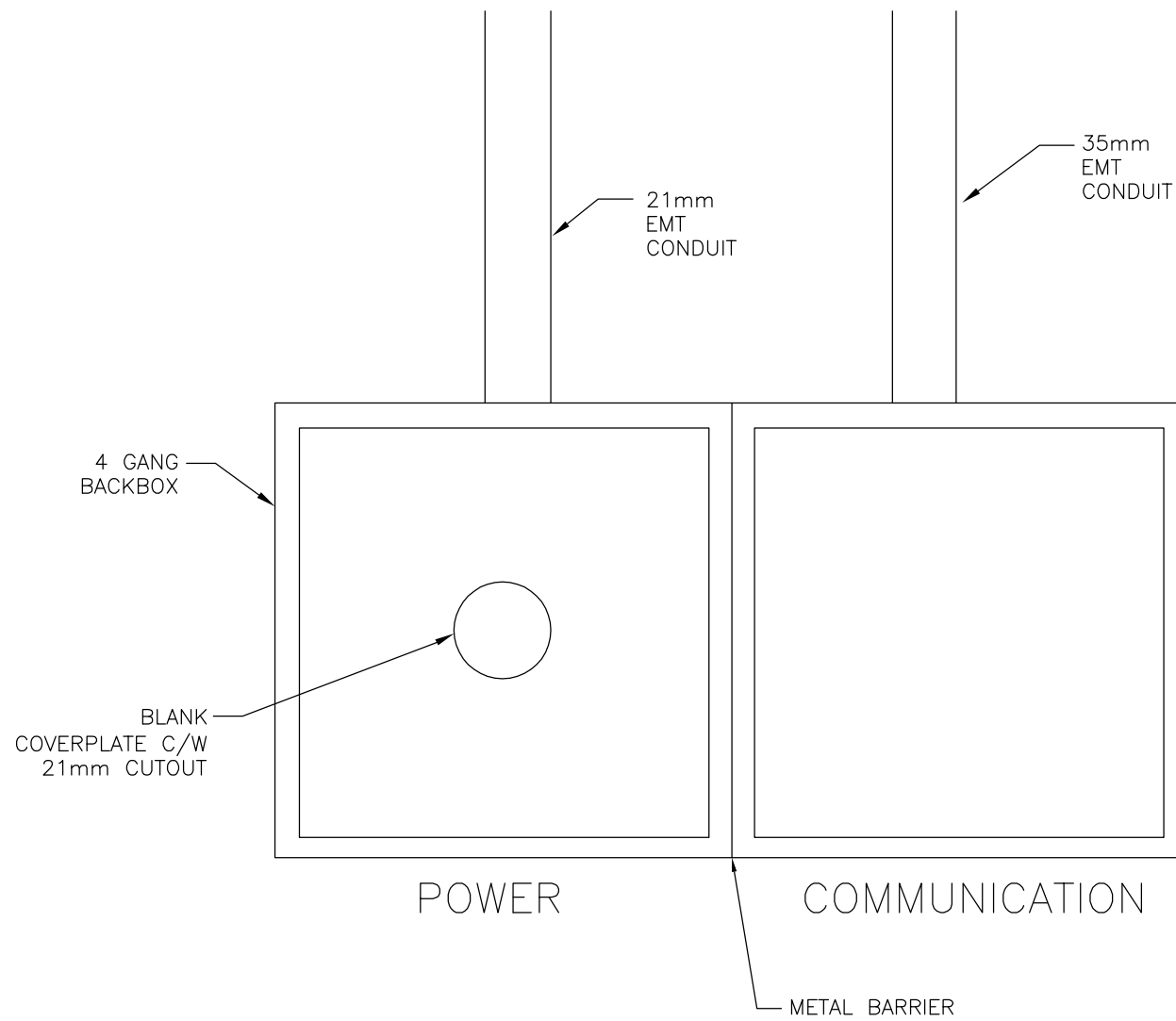


5 GROUNDING BUS BAR DETAIL
E6.01 SCALE: NTS

- GENERAL NOTES:**
- GROUND AND BOND INCOMING COPPER TELEPHONE CABLES, RACKS, CONDUITS AND CABLE TRAY WITH #6AWG GREEN INSULATED CONDUCTORS.
 - LOCATE BUS BAR NEAR ASSOCIATED EQUIPMENT.
 - BUS BAR SHALL BE DIRECT BONDED TO THE BUILDING'S MAIN ELECTRICAL SERVICE GROUNDING ELECTRODE SYSTEM.
 - BUS BAR SHALL BE FACTORY PRE-DRILLED WITH HOLES FOR USE WITH STANDARD SIZE LUGS AND BE AVAILABLE IN VARIABLE LENGTHS. BUS BAR SHALL BE COMPLETE WITH RAISED SUPPORTS AND BE ULC/CSA LISTED.



3 CARD READER/DOOR DETAIL
E6.01 SCALE: NTS



4 TYPICAL SYSTEMS FURNITURE WALL FEED
E6.01 SCALE: NTS

- DETAIL NOTES:**
- PROVIDE CONDUITS C/W PULL STRINGS AND END GROMMETS (BUSHINGS).
 - CONNECT INTO THE FURNITURE SYSTEM THROUGH LIQUID-TIGHT FLEX CONDUIT SUPPLIED BY FURNITURE VENDOR. COORDINATE INSTALLATION OF FURNITURE WHIPS WITH SYSTEMS FURNITURE MANUFACTURER.
 - FOR COMMUNICATION CABLING PROVIDE STAINLESS STEEL COVERPLATE, OPENING WITH GROMMET AND BLACK, SPLIT LOOM TUBING SIZED TO SUIT.



METRIC
THIS DRAWING IS COPYRIGHTED AND MUST NOT BE USED, REPRODUCED, OR REVISED WITHOUT WRITTEN PERMISSION.
ALL DIMENSIONS ARE IN MILLIMETERS UNLESS OTHERWISE NOTED. VERIFY DIMENSIONS.
DO NOT SCALE THIS DRAWING.
REPORT INCONSISTENCIES AND OMISSIONS TO THE DEPARTMENTAL REPRESENTATIVE FOR CLARIFICATION BEFORE COMMENCING WITH THE WORK.
DEVIATIONS FROM THE CONTRACT DOCUMENTS WITHOUT WRITTEN APPROVAL FROM THE DEPARTMENTAL REPRESENTATIVE ARE SUBJECT TO CORRECTION AT THE CONTRACTOR'S EXPENSE.

ARCHITECTURAL / INTERIOR DESIGN
DIALOG
2 BLOOR ST. EAST, SUITE 1100
TORONTO, ON
Tel: (647)966-0220 Fax: (416)966-0223
MECHANICAL ENGINEER
DIALOG
2 BLOOR ST. EAST, SUITE 1100
TORONTO, ON
Tel: (416)966-0220 Fax: (416)966-0223
ELECTRICAL ENGINEER
DIALOG
2 BLOOR ST. EAST, SUITE 1100
TORONTO, ON
Tel: (416)966-0220 Fax: (416)966-0223

1	ISSUED FOR BID	2016-09-02
revision		date

Do not scale drawings.
Verify all dimensions and conditions on site and immediately notify the Departmental Representative of all discrepancies.

A	Detail No.
B	No. du detail
C	drawing no. - where detail required dessin no. - ou detail exigé
C	drawing no. - where detailed dessin no. - ou detaillé

project title
titre du projet
DOMINION PUBLIC BUILDING
457 RICHMOND STREET
LONDON, ONTARIO

6TH FLOOR TENANT RELOCATION & OFFICE FIT UP

drawing title
titre du dessin
ELECTRICAL DETAILS

drawn by
dessiné par DD

designed by
conçu par

approved by
approuvé par RT

bid
offre DA project manager
administrateur de projets

project date
date du projet 2016-09-02

project no.
no. du projet R.079143.042

drawing no.
dessiné no. EAST-E6.01