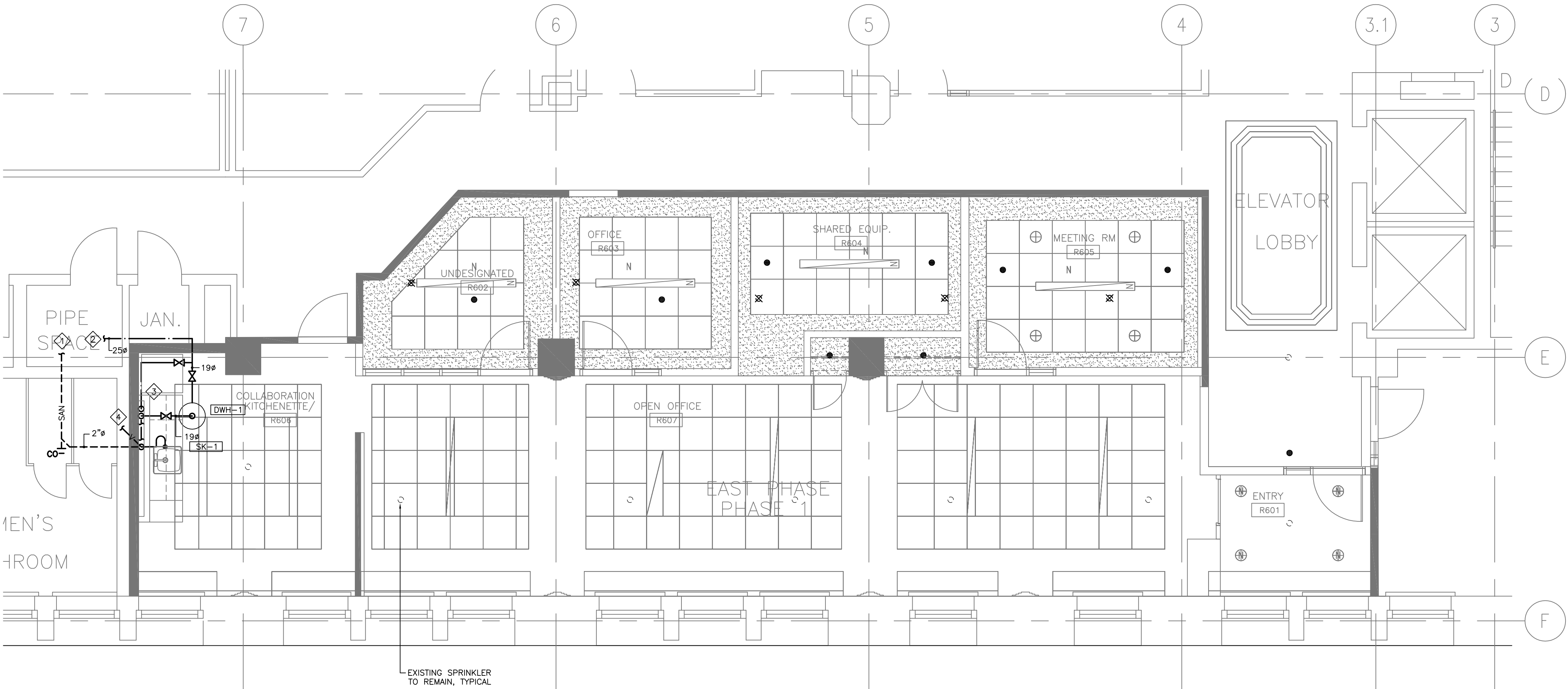


CAD FILE:



1 FIRE PROTECTION AND PLUMBING PLAN
M2.01 SCALE: 1:50

FIXTURE	DRAIN		VENT	COLD WATER	HOT WATER
	CAST IRON	DWV COPPER			
SINK	38mm	38mm	32mm	13mm	13mm

GENERAL NOTES

- THIS DRAWING INDICATES GENERAL INTENT OF DESIGN ONLY. CONTRACTOR TO VERIFY SITE CONDITION BEFORE ORDERING MATERIALS AND COMMENCING WORK. REPORT TO DEPARTMENTAL REPRESENTATIVE ANY DISCREPANCIES BETWEEN EXISTING AND DESIGN DRAWINGS.
- DEMOLISH/RELOCATE WORK AS INDICATED.
- REMOVE ALL DEBRIS AND RUBBISH DAILY AND ONCE JOB IS COMPLETED.
- PROVIDE NEW EQUIPMENT INCLUDING PIPING, VALVES, FITTINGS, FIXTURES, DOMESTIC WATER TANK AND ACCESSORIES AS INDICATED.
- COORDINATE FINAL LOCATION OF EQUIPMENT, PIPING AND NEW WORK WITH ALL TRADES.
- ALL PLUMBING FIXTURES SHALL BE VENTED AND ALL TRAPS SHALL BE PRIMED AS PER NATIONAL PLUMBING CODE.
- ALL PIPING SHALL BE INSULATED AS SPECIFIED IN THE SPECIFICATION.
- SPRINKLERS TO BE INSTALLED IN ACCORDANCE WITH NFPA 13.

KEYNOTES

- CONNECT NEW SAN DRAIN LINE TO EXISTING 75" SAN PROVISION IN CEILING SPACE OF FLOOR BELOW. CONTRACTOR TO DETERMINE EXACT LOCATION OF CONNECTION POINT PRIOR TO ORDERING MATERIALS AND COMMENCING WORK. ALLOW FOR REPAIR OF EXISTING DRYWALL CEILING IN WASHROOM.
- CONNECT NEW DCW LINE TO EXISTING DCW PIPE IN CEILING SPACE OF THIS FLOOR. CONTRACTOR TO SITE VERIFY EXISTING DCW SERVICE.
- DCW & DHW DROP DN TO LOW LEVEL AND RUN IN NEW MILLWORK.
- CONNECT TO NEAREST VENT STACK IN WASHROOM CEILING SPACE.



Stamp

METRIC

THIS DRAWING IS COPYRIGHTED AND MUST NOT BE USED, REPRODUCED, OR REVISED WITHOUT WRITTEN PERMISSION.

ALL DIMENSIONS ARE IN MILLIMETERS UNLESS OTHERWISE NOTED. VERIFY DIMENSIONS. DO NOT SCALE THIS DRAWING.

REPORT INCONSISTENCIES AND OMISSIONS TO THE DEPARTMENTAL REPRESENTATIVE FOR CLARIFICATION BEFORE COMMENCING WITH THE WORK.

DEVIATIONS FROM THE CONTRACT DOCUMENTS WITHOUT WRITTEN APPROVAL FROM THE DEPARTMENTAL REPRESENTATIVE ARE SUBJECT TO CORRECTION AT THE CONTRACTOR'S EXPENSE.

ARCHITECTURAL / INTERIOR DESIGN

DIALOG
2 BLOOR ST. EAST, SUITE 1100
TORONTO, ON
Tel: (416)966-0220 Fax: (416)966-0223

MECHANICAL ENGINEER

DIALOG
2 BLOOR ST. EAST, SUITE 1100
TORONTO, ON
Tel: (416)966-0220 Fax: (416)966-0223

ELECTRICAL ENGINEER

DIALOG
2 BLOOR ST. EAST, SUITE 1100
TORONTO, ON
Tel: (416)998-0220 Fax: (416)966-0223

1	ISSUED FOR BID	2016-08-10
revision		date

Do not scale drawings.
Verify all dimensions and conditions on site and immediately notify the Departmental Representative of all discrepancies.

	A	Detail No.
	B	No. du detail
	C	drawing no. - where detail required dessin no. - où detail exigé
		drawing no. - where detailed dessin no. - où détaillé

project title
titre du projet
DOMINION PUBLIC BUILDING

457 RICHMOND STREET
LONDON, ONTARIO
6TH FLOOR TENANT RELOCATION & OFFICE FIT UP

drawing title
titre du dessin
**FIRE PROTECTION AND
PLUMBING PLAN**

drawn by
dessiné par
MH

designed by
conçue par
JPK

approved by
approuvé par
RD

bid
offre
DA

project manager
administrateur
de projets

project date
date du projet
2016-08-10

project no.
no. du projet
R.079143.042

drawing no.
dessiné no.
EAST-M2.01

METRIC

THIS DRAWING IS COPYRIGHTED AND MUST NOT BE USED,
REPRODUCED, OR REVISED WITHOUT WRITTEN PERMISSION.

ALL DIMENSIONS ARE IN MILLIMETERS UNLESS OTHERWISE NOTED.
VERIFY DIMENSIONS.
DO NOT SCALE THIS DRAWING.

REPORT INCONSISTENCIES AND OMISSIONS TO THE DEPARTMENTAL
REPRESENTATIVE FOR CLARIFICATION BEFORE COMMENCING WITH
THE WORK.

DEVIATIONS FROM THE CONTRACT DOCUMENTS WITHOUT
WRITTEN APPROVAL FROM THE DEPARTMENTAL REPRESENTATIVE
ARE SUBJECT TO CORRECTION AT THE CONTRACTOR'S EXPENSE.

ARCHITECTURAL / INTERIOR DESIGN

DIALOG
2 BLOOR ST. EAST, SUITE 1100
TORONTO, ON
Tel: (416)966-0220 Fax: (416)966-0223

MECHANICAL ENGINEER

DIALOG
2 BLOOR ST. EAST, SUITE 1100
TORONTO, ON
Tel: (416)966-0220 Fax: (416)966-0223

ELECTRICAL ENGINEER

DIALOG
2 BLOOR ST. EAST, SUITE 1100
TORONTO, ON
Tel: (416)996-0220 Fax: (416)966-0223

GENERAL DEMOLITION NOTES

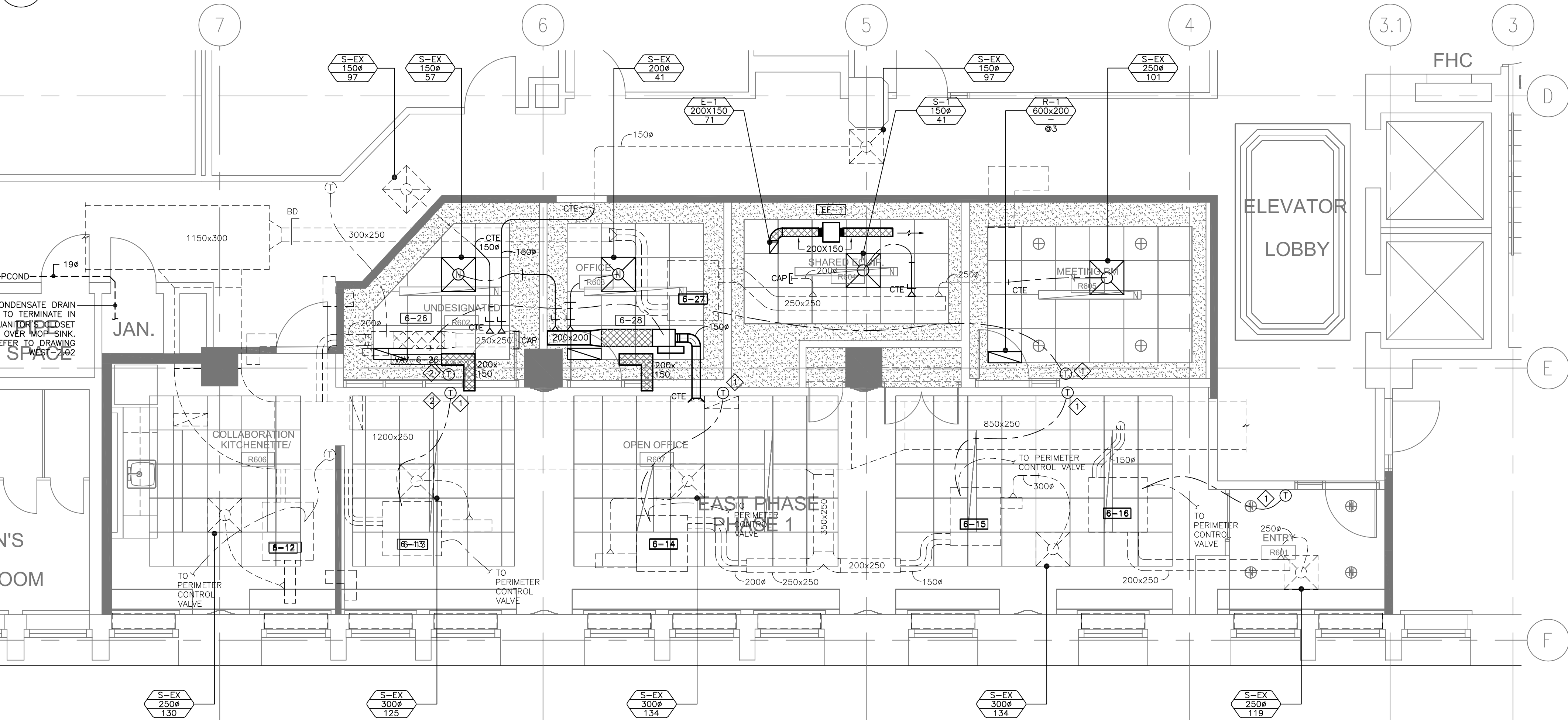
1. THIS DRAWING INDICATES GENERAL INTENT OF DESIGN ONLY. CONTRACTOR TO VERIFY SITE CONDITION BEFORE ORDERING MATERIALS AND COMMENCING WORK. REPORT TO DEPARTMENTAL REPRESENTATIVE ANY DISCREPANCIES BETWEEN EXISTING AND DESIGN DRAWINGS.
2. DEMOLISH/RELOCATE WORK AS INDICATED.
3. REMOVE ALL DEBRIS AND RUBBISH ONCE JOB IS COMPLETED.

KEYNOTES

- ◆ RELOCATE EXISTING THERMOSTAT.

1 HVAC DEMOLITION PLAN

M2.02 SCALE: 1:50



2 HVAC PLAN

M2.02 SCALE: 1:50

GENERAL NOTES

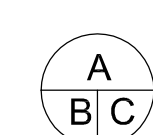


1. THIS DRAWING INDICATES GENERAL INTENT OF DESIGN ONLY. CONTRACTOR TO VERIFY EXISTING HVAC ARRANGEMENT INCLUDING BUT NOT LIMITED TO DUCT SIZE, AND CONTROL ARRANGEMENT PRIOR TO ORDERING MATERIALS AND COMMENCING WORK. REPORT TO DEPARTMENTAL REPRESENTATIVE ANY DISCREPANCIES BETWEEN EXISTING AND DESIGN DRAWINGS.
2. COORDINATE WITH CONTRACTOR TO SUPPLY POWER TO ALL EQUIPMENT AS REQUIRED.
3. CONTRACTOR TO PROVIDE OFFSETS AS REQUIRED TO SUIT EXISTING SITE CONDITIONS. WHERE DUCTS ARE SHOWN OVERLAPPING, CONTRACTOR IS TO ASSUME OFFSETS TO FACILITATE THIS ROUTING.
4. ALL BRANCHES TO BE C/W BALANCING DAMPERS.
5. CONTRACTOR IS TO CAP AND SEAL ANY SUPPLY AIR OPENINGS NOT UTILIZED FOR NEW CONNECTIONS.
6. CONTRACTOR TO BALANCE EXISTING SUPPLY AIR DIFFUSERS TO NEW VALUES INDICATED ON DIFFUSER TAGS.

KEYNOTES

- ◆ EXISTING THERMOSTAT IN RELOCATED POSITION.
◆ THERMOSTATS TO BE LOCATED BELOW CLERESTORY WINDOWS, COORDINATE HORIZONTAL WIRING THROUGH PARTITION.

1	ISSUED FOR BID	2016-09-02
revision		date

Do not scale drawings.
Verify all dimensions and conditions on site and immediately notify the
Departmental Representative of all discrepancies.

	A Detail No. No. du detail
	B drawing no. - where detail required dessin no. - ou detail exigé
	C drawing no. - where detailed dessin no. - ou détaillé

project title
titre du projet

DOMINION PUBLIC BUILDING

457 RICHMOND STREET
LONDON, ONTARIO

6TH FLOOR TENANT RELOCATION & OFFICE FIT UP

drawing title
titre du dessin

HVAC PLAN

drawn by dessiné par	MH	project manager administrateur de projets
designed by conc par	JPK	
approved by approuvé par	RD	
bid offre	DA	

project date
date du projet

2016-09-02

project no.
no. du projet

R.079143.042

drawing no.
dessiné no.

EAST-M2.02

SPLIT A/C SYSTEM SCHEDULE

TAG	DESCRIPTION	AIRFLOW H/M/L (L/S)	SERVICE	TOTAL CAPACITY (COOLING-HEATING) (KW)	REFRIG.	ELECTRICAL DATA (V/Ph/Hz)	MOCp (A)	MCA (A)	WEIGHT (KG)	NOTES
AC-1	INDOOR DUCTLESS WALL MOUNT	533/450/333	LAN ROOM	10.5-11.7	R410-A	-	-	-	-	1, 2, 3, 4, 5
CU-1	OUTDOOR CONDENSING UNIT	-	LAN ROOM	-	R410-A	208/1/60	40	24.5	92	2

1	C/W 7-DAY PROGRAMMABLE THERMOSTAT (STAND ALONE PER INDOOR UNIT)
2	OUTDOOR UNIT - LOW AMBIENT OPERATION TO - 40°F
3	CONTROL ADAPTER - PQCAO
4	CONDENSATE PUMP AND DRAIN FOR EVERY AC UNIT (120V)
5	INDOOR UNITS TO BE POWERED FROM OUTDOOR UNIT

TERMINAL BOX SCHEDULE

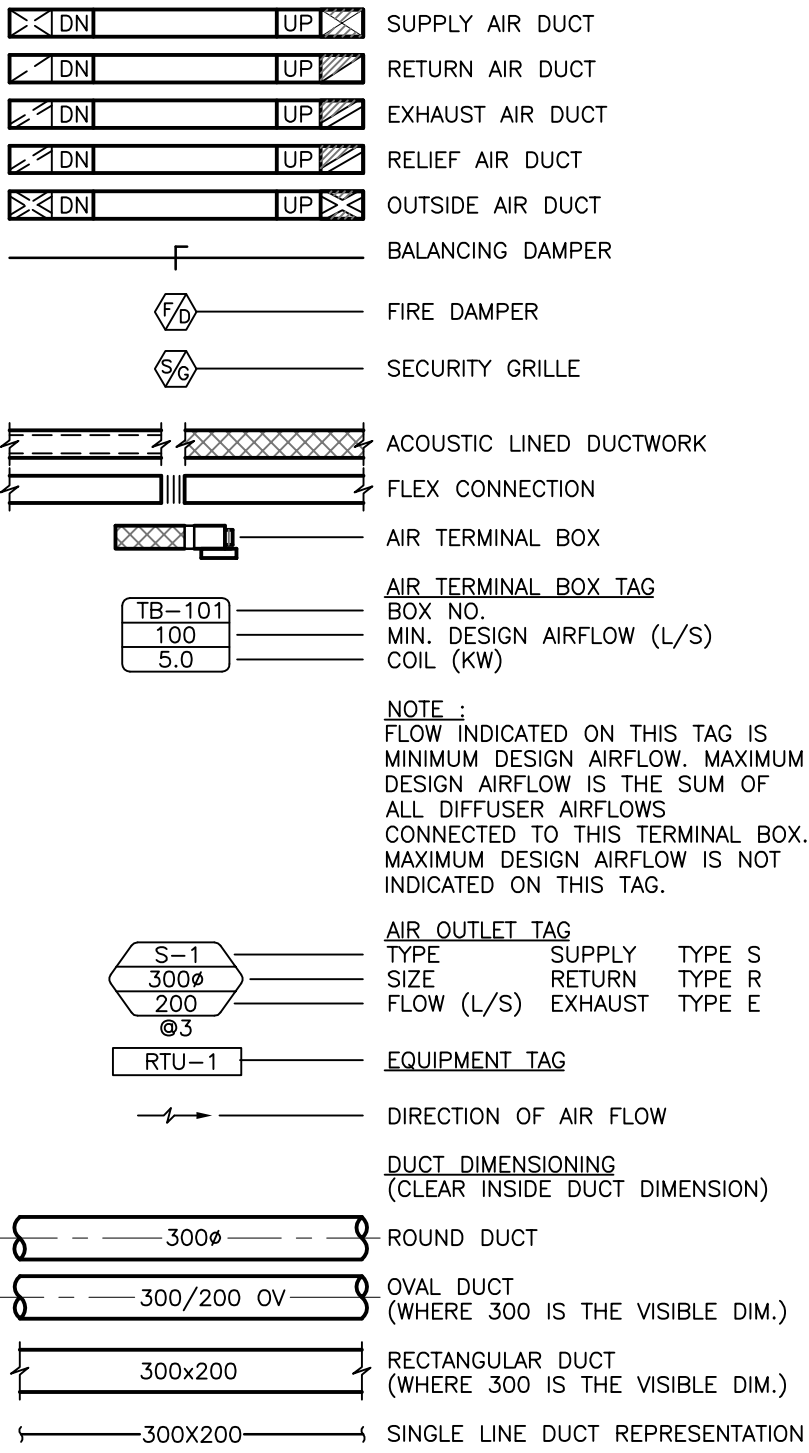
TAG	SIZE	DESCRIPTION	SERVICE	AIR FLOW MAX. (L/S)	AIR FLOW MIN. (L/S)	ELECTRICAL (V/PH/Hz)	FLA	MOTOR HP	NOTES
6-1	8	FAN POWER BOX		207	107	-	-	-	EXISTING FAN POWER BOX TO REMAIN
6-2	8	FAN POWER BOX		220	74	-	-	-	EXISTING FAN POWER BOX TO BE RELOCATED
6-3	6	FAN POWER BOX		132	37	-	-	-	EXISTING FAN POWER BOX TO REMAIN
6-4	6	FAN POWER BOX		180	37	-	-	-	EXISTING FAN POWER BOX TO REMAIN
6-5	6	FAN POWER BOX		129	37	-	-	-	EXISTING FAN POWER BOX TO REMAIN
6-6	6	FAN POWER BOX		141	37	-	-	-	EXISTING FAN POWER BOX TO REMAIN
6-7	8	FAN POWER BOX		213	74	-	-	-	EXISTING FAN POWER BOX TO REMAIN
6-8	6	FAN POWER BOX		118	37	-	-	-	EXISTING FAN POWER BOX TO REMAIN
6-9	8	FAN POWER BOX		125	74	-	-	-	EXISTING FAN POWER BOX TO BE RELOCATED
6-10	8	FAN POWER BOX		190	89	-	-	-	EXISTING FAN POWER BOX TO REMAIN
6-11	8	FAN POWER BOX		190	89	-	-	-	EXISTING FAN POWER BOX TO REMAIN
6-29	6	FAN POWER BOX		90	30	115/1/60	1.25	0.33	NEW FAN POWER BOX C/W DIGITAL CONTROLLER, BACNET COMPATIBLE

DIFFUSER, GRILLE, REGISTER AND LOUVRE SCHEDULE

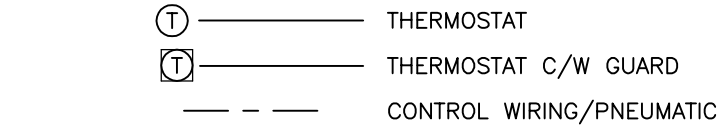
TAG	TYPE	SERVICE	MOUNTING	COLOUR	NOTES
S-EX	SQUARE CONE DIFFUSER	S/A	T-BAR	WHITE	EXISTING SQUARE CONE DIFFUSER, 610X610 MODULE
E-1	EGG CRATE GRILLE	E/A	T-BAR	WHITE	GRILLE SIZE AS PER DRAWING.
S-1	610X610 SQUARE CONE DIFFUSER	S/A	T-BAR	WHITE	PROVIDE NEW SQUARE CONE DIFFUSER, SIZE TO SUIT EXISTING CEILING GRID, STEEL CONST., POWDER COAT FIN..
R-1	EGG CRATE GRILLE	R/A	T-BAR	WHITE	GRILLE SIZE AS PER DRAWING.

MECHANICAL LEGEND

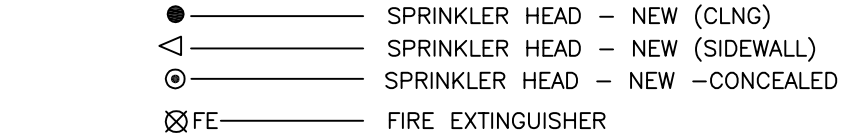
AIR DISTRIBUTION



CONTROLS AND INSTRUMENTATION



FIRE PROTECTION



WEST DRAWING LIST

WEST-M0.01	- MECHANICAL LEGEND & SCHEDULES
WEST-M0.02	- MECHANICAL DETAILS
WEST-M1.01	- FIRE PROTECTION AND PLUMBING DEMOLITION PLAN
WEST-M1.02	- HVAC DEMOLITION PLAN
WEST-M2.01	- FIRE PROTECTION AND PLUMBING UPGRADE PLAN
WEST-M2.02	- HVAC UPGRADE PLAN

SPECIAL PIPING AND SYSTEMS

RS	REFRIGERANT SUCTION PIPING
RL	REFRIGERANT LIQUID PIPING
COND	STEAM CONDENSATE PIPING

ABBREVIATIONS

ABBY	FULL NAME
AC	AIR CONDITIONER
AF	AIR FILTER
AF	ABOVE FINISHED FLOOR
AL	ALUMINUM
AS	AIR SYSTEM
B	BOILER
BDD	BACK DRAFT DAMPER
BMS	BUILDING MANAGEMENT SYSTEM
BOD	BOTTOM OF DUCT
BTUH	BRITISH THERMAL UNIT
CC	COIL - COOLING
CFM	CUBIC FEET PER MINUTE
CH	CHILLER
CHGLYR	CHILLED GLYCOL RETURN
CHGLYS	CHILLED GLYCOL SUPPLY
CHWR	CHILLED WATER RETURN
CHWS	CHILLED WATER SUPPLY
COMP	AIR COMPRESSOR
CR	CONDENSATE RECEIVER
CT	COOLING TOWER
CU	CONDENSING UNIT
CUH	CABINET UNIT HEATER
CWR	CONDENSER WATER RETURN
CWS	CONDENSER WATER SUPPLY
DC	DRY COOLER
DCW	DOMESTIC COLD WATER
DF	DRINKING FOUNTAIN
DFU	DUCT FURNACE
DHWR	DOMESTIC HOT WATER RECIRC.
DIFF	DIFFUSER
DN	DOWN
DWH	DOMESTIC HOT WATER
DWH	DOMESTIC WATER HEATER
E/A	EXHAUST AIR
EC	ELECTRICAL CONTRACTOR
EF	FAN - EXHAUST
ELEV	ELEVATION
ESP	EXTERNAL STATIC PRESSURE
FD	FLOOR DRAIN
FF	FORCE FLOW
FFD	FUNNEL FLOOR DRAIN
FLA	FULL LOAD AMPS
FU	FURNACE
GC	COIL - GLYCOL
GNC	GENERAL CONTRACTOR
GPM	US. GALLONS PER MINUTE
HB	HOSEBIBB
HBDR	HUB DRAIN
HC	COIL - HEATING
HC	COIL - HEATING
HE	HEAT EXCHANGER
HP	HORSEPOWER
HUM	HUMIDIFIER
ID	INSIDE DIMENSION
JS	JANITOR'S SINK
L/S	LITRES PER SECOND
LAV	LAVATORY
MAX	MAXIMUM
MIN	MINIMUM
MUA	MAKE UP AIR
NOM	NOMINAL
O/A	OUTSIDE AIR
OBD	OPPOSED BLADE DAMPER
PHC	COIL - PREHEAT
R/A	RETURN AIR
RD	DRAIN - ROOF AREA
REL/A	RELIEF AIR
RF	FAN - RETURN AIR
RHC	COIL - REHEAT
RTU	ROOF TOP UNIT
RWL	RAIN WATER LEADER
S/A	SUPPLY AIR
SC	SPRAYED COIL
SF	FAN - SUPPLY AIR
SK	SINK
SL	SILENCER
SP	STATIC PRESSURE
UR	URINAL
WC	WATER CLOSET

RENOVATION/DEMO.

---	EXISTING TO REMAIN
-X-	EXISTING TO BE DEMOLISHED
-	NEW
○	SPRINKLER HEAD - EXISTING
●	SPRINKLER HEAD - NEW
⊗	SPRINKLER HEAD - DEMOLISHED

Stamp

METRIC

THIS DRAWING IS COPYRIGHTED AND MUST NOT BE USED, REPRODUCED, OR REVISED WITHOUT WRITTEN PERMISSION.

ALL DIMENSIONS ARE IN MILLIMETERS UNLESS OTHERWISE NOTED. VERIFY DIMENSIONS. DO NOT SCALE THIS DRAWING.

REPORT INCONSISTENCIES AND OMISSIONS TO THE DEPARTMENTAL REPRESENTATIVE FOR CLARIFICATION BEFORE COMMENCING WITH THE WORK.

DEVIATIONS FROM THE CONTRACT DOCUMENTS WITHOUT WRITTEN APPROVAL FROM THE DEPARTMENTAL REPRESENTATIVE ARE SUBJECT TO CORRECTION AT THE CONTRACTOR'S EXPENSE.

ARCHITECTURAL / INTERIOR DESIGN

DIALOG
2 BLOOR ST. EAST, SUITE 1100
TORONTO, ON

Tel: (416)966-0220 Fax: (416)966-0223

MECHANICAL ENGINEER

DIALOG

2 BLOOR ST. EAST, SUITE 1100

Tel: (416)966-0220 Fax: (416)966-0223

ELECTRICAL ENGINEER

DIALOG

2 BLOOR ST. EAST, SUITE 1100

Tel: (416)998-0220 Fax: (416)966-0223

1	ISSUED FOR BID	2016-09-02

revision

date

Do not scale drawings. Verify all dimensions and conditions on site and immediately notify the Departmental Representative of all discrepancies.

A	Detail No.
B	No. du detail
C	drawing no. - where detail required
	dessin no. - où detail exigé
	drawing no. - where detailed
	dessin no. - où détaillé

project title

titre du projet

DOMINION PUBLIC BUILDING

457 RICHMOND STREET
LONDON, ONTARIO

6TH FLOOR TENANT RELOCATION & OFFICE FIT UP

drawing title

titre du dessin

MECHANICAL LEGEND
AND SCHEDULES

drawn by

dessine par

MH

designed by

conc par

JPK

approved by

approuve par

RD

bid

offre

DA

project manager

administrateur

de projets

project date

date du projet

2016-09-02

project no.

no. du projet

R.079143.042

drawing no.

dessine no.

WEST-M0.01

METRIC
THIS DRAWING IS COPYRIGHTED AND MUST NOT BE USED, REPRODUCED, OR REVISED WITHOUT WRITTEN PERMISSION.
ALL DIMENSIONS ARE IN MILLIMETERS UNLESS OTHERWISE NOTED. VERIFY DIMENSIONS. DO NOT SCALE THIS DRAWING.
REPORT INCONSISTENCIES AND OMISSIONS TO THE DEPARTMENTAL REPRESENTATIVE FOR CLARIFICATION BEFORE COMMENCING WITH THE WORK.
DEVIATIONS FROM THE CONTRACT DOCUMENTS WITHOUT WRITTEN APPROVAL FROM THE DEPARTMENTAL REPRESENTATIVE ARE SUBJECT TO CORRECTION AT THE CONTRACTOR'S EXPENSE.

ARCHITECTURAL / INTERIOR DESIGN
DIALOG
2 BLOOR ST. EAST, SUITE 1100
TORONTO, ON
Tel: (416)966-0220 Fax: (416)966-0223
MECHANICAL ENGINEER
DIALOG
2 BLOOR ST. EAST, SUITE 1100
TORONTO, ON
Tel: (416)966-0220 Fax: (416)966-0223
ELECTRICAL ENGINEER
DIALOG
2 BLOOR ST. EAST, SUITE 1100
TORONTO, ON
Tel: (416)998-0220 Fax: (416)966-0223

1	ISSUED FOR BID	2016-09-02
revision		date

Do not scale drawings.
Verify all dimensions and conditions on site and immediately notify the Departmental Representative of all discrepancies.

A	Detail No. No. du détail
B	drawing no. - where detail required dessin no. - où détail exigé
C	drawing no. - where detailed dessin no. - où détaillé

project title
titre du projet
DOMINION PUBLIC BUILDING
457 RICHMOND STREET
LONDON, ONTARIO
6TH FLOOR TENANT RELOCATION & OFFICE FIT UP

drawing title
titre du dessin
MECHANICAL DETAILS

drawn by
dessiné par
MH

designed by
conçue par
JPK

approved by
approuvé par
RD

bid
offre
DA

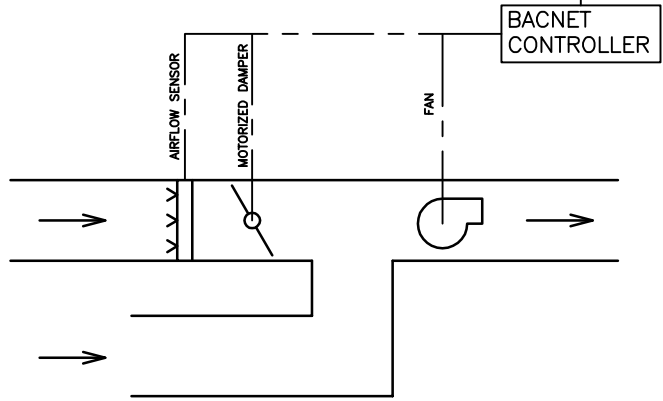
project manager
administrateur
de projets

project date
date du projet
2016-09-02

project no.
no. du projet
R.079143.042

drawing no.
dessiné no.
WEST-M0.02

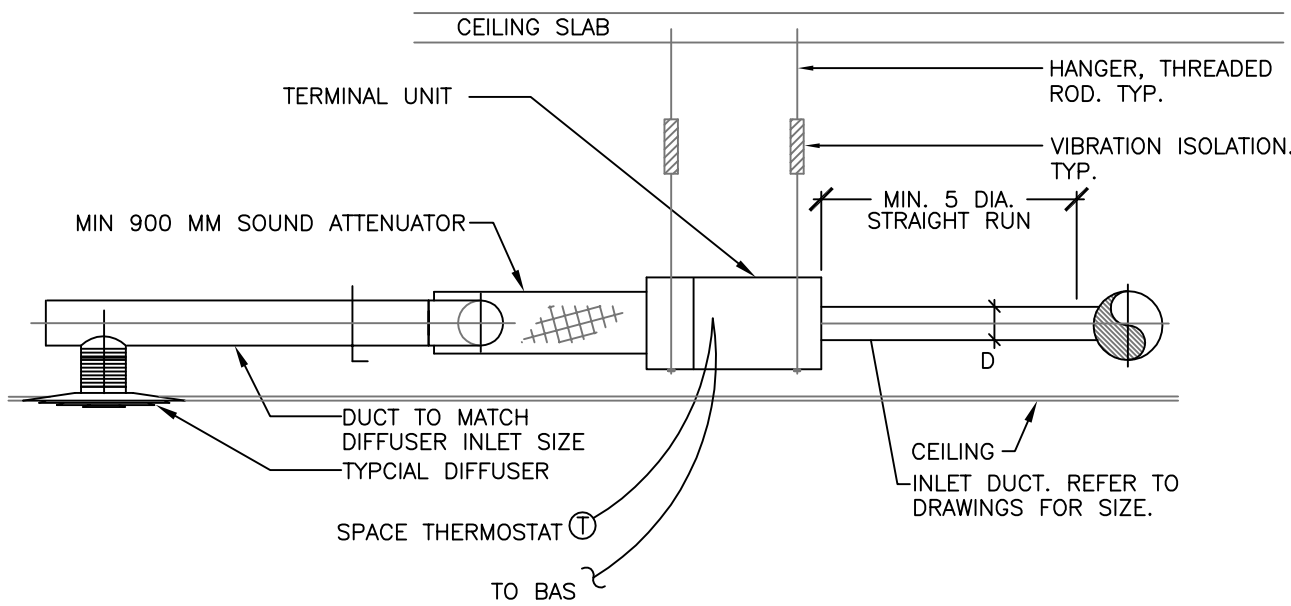
AI	MINIMUM AIRFLOW SET POINT (L/S)
AI	MAXIMUM AIRFLOW SET POINT (L/S)
AO	BOX FLOW (L/S)
AI	BOX FLOW SETPOINT (L/S)
AI	BOX FLOW SETPOINT OVERRIDE (L/S)
DI	BOX FLOW (AUTO/MANUAL)
DI	SPACE TEMPERATURE (°C)
DO	SPACE TEMPERATURE SET POINT (°C)
DI	SPACE TEMPERATURE SET POINT OVERRIDE(°C)
DI	SPACE TEMPERATURE (AUTO/MANUAL)
AI	PRIMARY SUPPLY AIR TEMPERATURE (°C)
DI	FAN STATUS
DI	ALARM



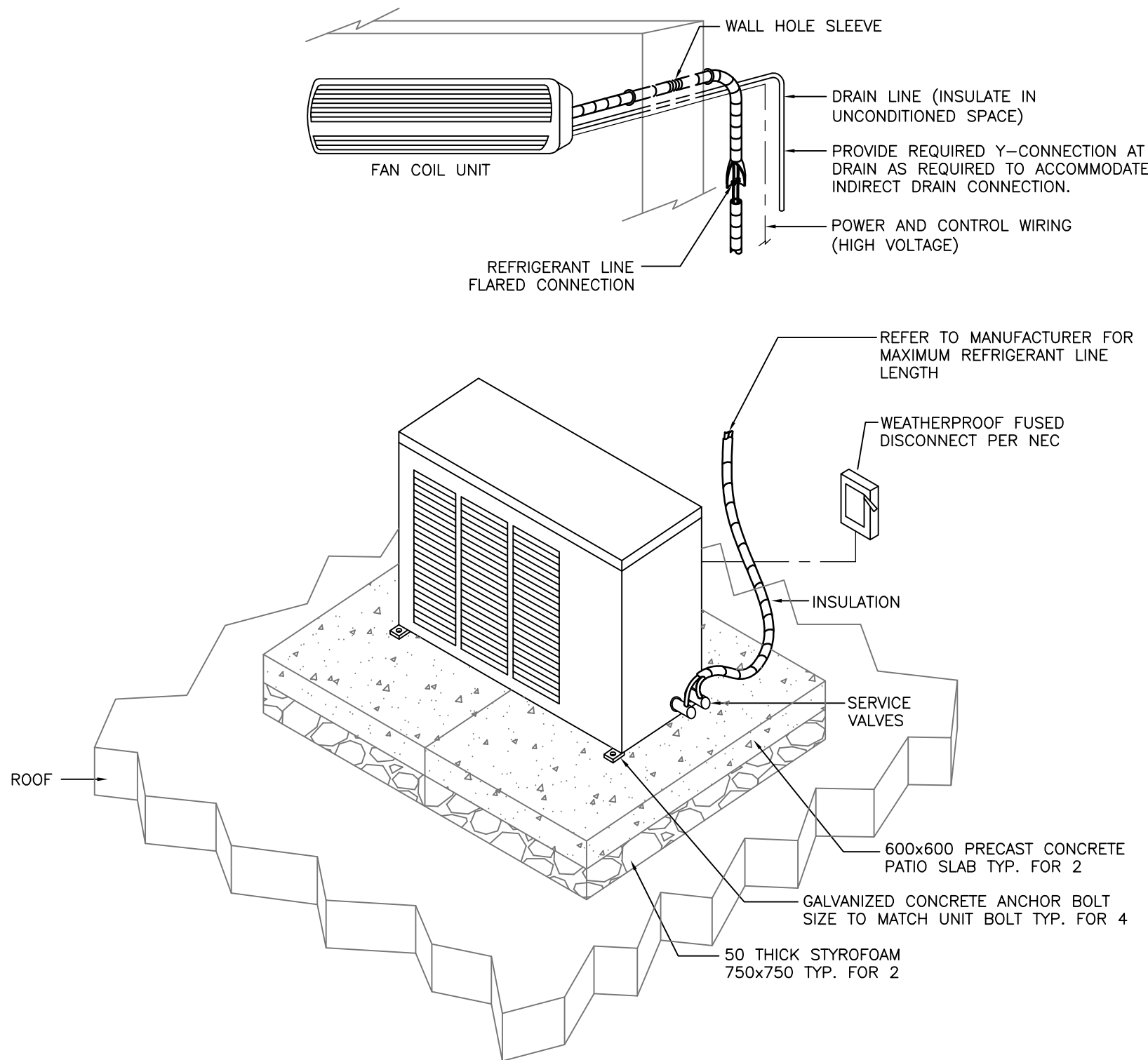
LEGEND
AI DESCRIPTION
— SIGNAL TYPE

- NOTE:
- SEQUENCE OF OPERATION TO MATCH EXISTING.
 - COORDINATE ALL WORK WITH EXISTING CONTROL CONTRACTOR.
 - PROVIDE ALL NEW CONTROLLERS, CABLING, WIRING, AND PROGRAMMING TO SUIT NEW EQUIPMENT.
 - UPDATE BAS GRAPHICS AT OPERATOR WORK STATION TO SUIT NEW BOXES AND NEW LOCATIONS OF NEW/EXISTING BOXES.
 - REFER TO WEST-M2.02, KEYNOTE 6 FOR FAN POWER BOX 6-11 TEMPERATURE SET POINT.

1 FAN POWER BOX CONTROL SCHEMATIC
SCALE: NTS

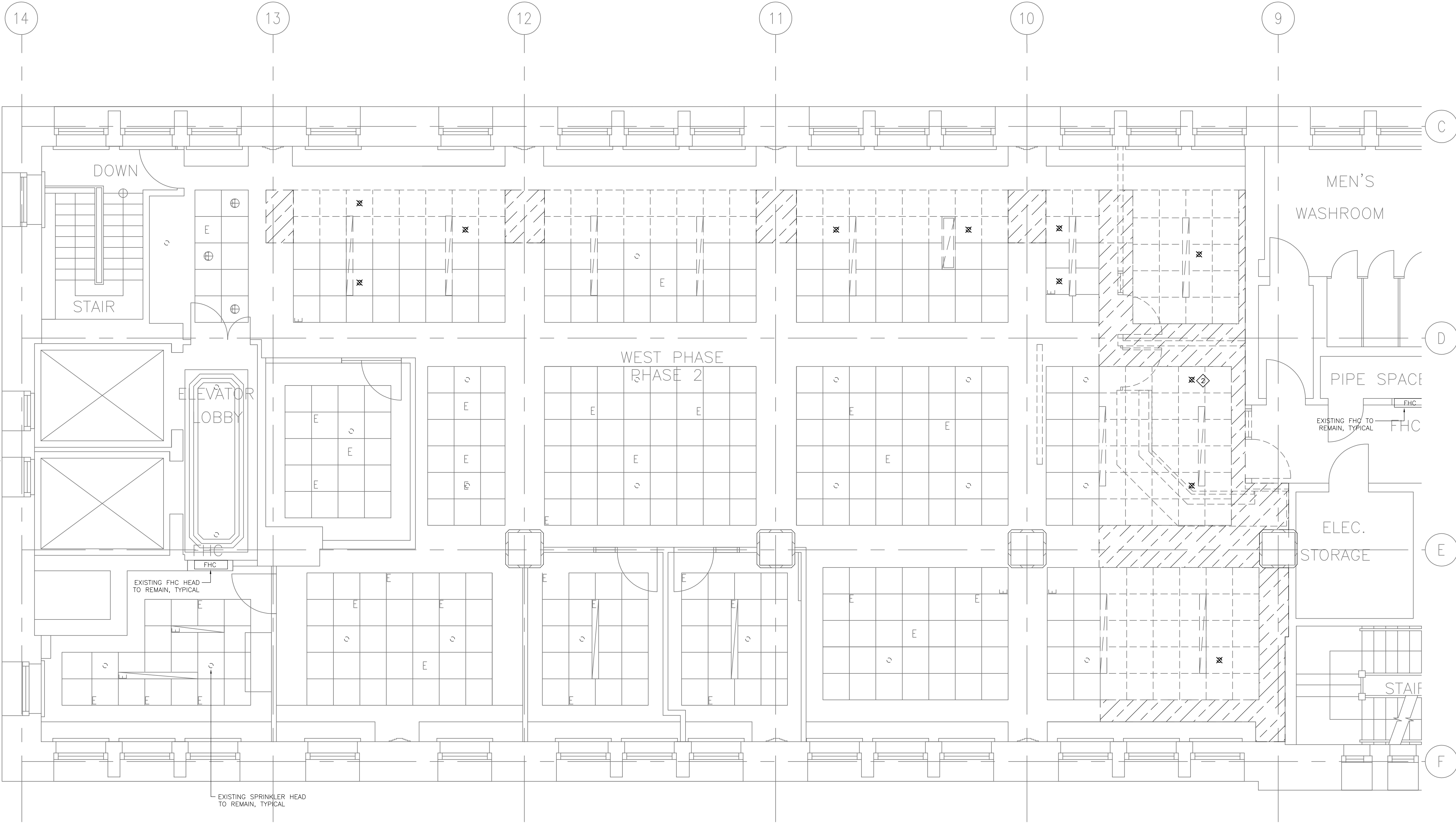


3 AIR TERMINAL BOX INSTALLATION DETAIL
SCALE: NTS



- NOTE:
- MINI SPLIT DX SYSTEM TO BE INSTALLED ACCORDING TO ALL APPLICABLE NATIONAL AND LOCAL ELECTRICAL, MECHANICAL AND BUILDING CODES.
 - REFER TO MANUFACTURER FOR MINIMUM INSTALLATION CLEARANCES.
 - INSTALL EQUIPMENT PER MANUFACTURER RECOMMENDATIONS.

2 SPLIT DX SYSTEM INSTALLATION DETAIL
SCALE: N.T.S.



1 FIRE PROTECTION AND PLUMBING DEMOLITION PLAN
M1.01 SCALE: 1:50

- GENERAL NOTES**
- THIS DRAWING INDICATES GENERAL INTENT OF DESIGN ONLY. CONTRACTOR TO VERIFY SITE CONDITION BEFORE ORDERING MATERIALS AND COMMENCING WORK. REPORT TO DEPARTMENTAL REPRESENTATIVE ANY DISCREPANCIES BETWEEN EXISTING AND DESIGN DRAWINGS.
 - DEMOLISH/RELOCATE WORK AS INDICATED.
 - REMOVE ALL DEBRIS AND RUBBISH DAILY AND ONCE JOB IS COMPLETED.
 - SPRINKLERS TO BE INSTALLED IN ACCORDANCE WITH NFPA 13.

- KEYNOTES**
- RESERVED
 - DEMOLISH EXISTING SPRINKLER HEAD (TYPICAL).

Public Works and
Government Services Canada
Travaux publics et
Services gouvernementaux Canada

DIALOG

Stamp

METRIC
THIS DRAWING IS COPYRIGHTED AND MUST NOT BE USED, REPRODUCED, OR REVISED WITHOUT WRITTEN PERMISSION.
ALL DIMENSIONS ARE IN MILLIMETERS UNLESS OTHERWISE NOTED. VERIFY DIMENSIONS. DO NOT SCALE THIS DRAWING.
REPORT INCONSISTENCIES AND OMISSIONS TO THE DEPARTMENTAL REPRESENTATIVE FOR CLARIFICATION BEFORE COMMENCING WITH THE WORK.
DEVIATIONS FROM THE CONTRACT DOCUMENTS WITHOUT WRITTEN APPROVAL FROM THE DEPARTMENTAL REPRESENTATIVE ARE SUBJECT TO CORRECTION AT THE CONTRACTOR'S EXPENSE.

ARCHITECTURAL / INTERIOR DESIGN
DIALOG
2 BLOOR ST. EAST, SUITE 1100
TORONTO, ON
Tel: (416)966-0220 Fax: (416)966-0223
MECHANICAL ENGINEER
DIALOG
2 BLOOR ST. EAST, SUITE 1100
TORONTO, ON
Tel: (416)966-0220 Fax: (416)966-0223
ELECTRICAL ENGINEER
DIALOG
2 BLOOR ST. EAST, SUITE 1100
TORONTO, ON
Tel: (416)998-0220 Fax: (416)966-0223

1	ISSUED FOR BID	2016-09-02
revision		date

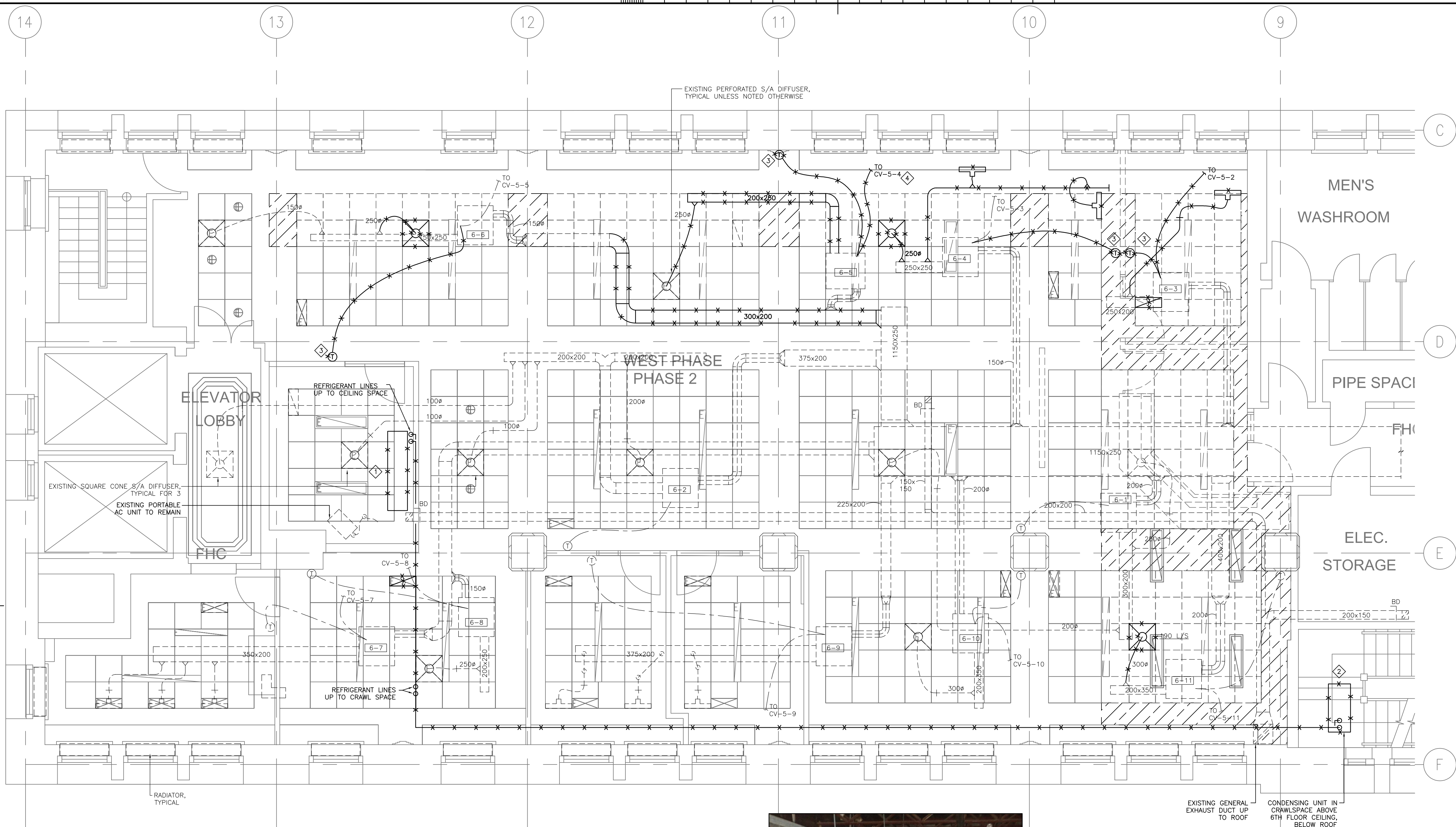
Do not scale drawings.
Verify all dimensions and conditions on site and immediately notify the Departmental Representative of all discrepancies.

A	Detail No.
B	No. du détail
C	drawing no. - where detail required dessin no. - où détail exigé
	drawing no. - where detailed dessin no. - où détaillé

project title
titre du projet
DOMINION PUBLIC BUILDING
457 RICHMOND STREET
LONDON, ONTARIO
6TH FLOOR TENANT RELOCATION & OFFICE FIT UP

drawing title
titre du dessin
**FIRE PROTECTION & PLUMBING
DEMOLITION PLAN**

drawn by dessiné par	MH	project manager administrateur de projets
designed by conçu par	JPK	
approved by approuvé par	RD	
bid offre	DA	
project date date du projet	2016-09-02	
project no. no. du projet	R.079143.042	
drawing no. dessiné no.	WEST-M1.01	

**1 HVAC DEMOLITION PLAN**

M1.02 SCALE: 1:50

GENERAL NOTES

- THIS DRAWING INDICATES GENERAL INTENT OF DESIGN ONLY. CONTRACTOR TO VERIFY SITE CONDITION BEFORE ORDERING MATERIALS AND COMMENCING WORK. REPORT TO ENGINEER ANY DISCREPANCIES BETWEEN EXISTING AND DESIGN DRAWINGS.
- DEMOLISH/RELOCATE WORK AS INDICATED.
- REMOVE ALL DEBRIS AND RUBBISH DAILY AND ONCE JOB IS COMPLETED.
- ALL REFRIGERATION WORK TO BE COMPLETED BY LICENSED REFRIGERATION CONTRACTOR

KEYNOTES

- DEMOLISH EXISTING FLOOR MOUNTED A/C UNIT. REMOVED AND RECLAIM R-22 REFRIGERANT FOR PROPER DISPOSAL. REMOVE EXISTING EVAPORATOR UNIT, REFRIGERANT PIPING LINES, AND CONDENSING UNIT IN CRAWL SPACE. REFER TO DETAIL 2 FOR PHOTO OF CRAWLSPACE IN CEILING BELOW ROOF.
- THERMOSTAT TO BE RELOCATED.
- DISCONNECT CONTROL VALVE CV-5-4. CONTROL WIRING FORM TERMINAL BOX 6-5. RECONNECT TO TERMINAL BOX 6-4. REFER TO DRAWING WEST-M2.02

**2 PHOTO OF CRAWLSPACE**

M1.02 SCALE: NTS



Public Works and
Government Services Canada
Travaux publics et
Services gouvernementaux Canada

DIALOG

Stamp

METRIC

THIS DRAWING IS COPYRIGHTED AND MUST NOT BE USED, REPRODUCED, OR REVISED WITHOUT WRITTEN PERMISSION.

ALL DIMENSIONS ARE IN MILLIMETERS UNLESS OTHERWISE NOTED. VERIFY DIMENSIONS. DO NOT SCALE THIS DRAWING.

REPORT INCONSISTENCIES AND OMISSIONS TO THE DEPARTMENTAL REPRESENTATIVE FOR CLARIFICATION BEFORE COMMENCING WITH THE WORK.

DEVIATIONS FROM THE CONTRACT DOCUMENTS WITHOUT WRITTEN APPROVAL FROM THE DEPARTMENTAL REPRESENTATIVE ARE SUBJECT TO CORRECTION AT THE CONTRACTOR'S EXPENSE.

ARCHITECTURAL / INTERIOR DESIGN

DIALOG
2 BLOOR ST. EAST, SUITE 1100
TORONTO, ON
Tel: (416)966-0220 Fax: (416)966-0223

MECHANICAL ENGINEER

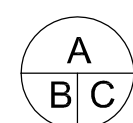
DIALOG
2 BLOOR ST. EAST, SUITE 1100
TORONTO, ON
Tel: (416)966-0220 Fax: (416)966-0223

ELECTRICAL ENGINEER

DIALOG
2 BLOOR ST. EAST, SUITE 1100
TORONTO, ON
Tel: (416)966-0220 Fax: (416)966-0223

revision	date
1	ISSUED FOR BID
2016-09-02	

Do not scale drawings.
Verify all dimensions and conditions on site and immediately notify the Departmental Representative of all discrepancies.



- A Detail No.
No. du détail
B drawing no. - where detail required
dessin no. - où détail exigé
C drawing no. - where detailed
dessin no. - où détaillé

project title
titre du projet**DOMINION PUBLIC BUILDING**

457 RICHMOND STREET
LONDON, ONTARIO

6TH FLOOR TENANT RELOCATION & OFFICE FIT UPdrawing title
titre du dessin**HVAC DEMOLITION PLAN**drawn by
dessiné par

MH

designed by
conçue par

JPK

approved by
approuvé par

—

bid
offre

DA

project manager
administrateur
de projetsproject date
date du projet

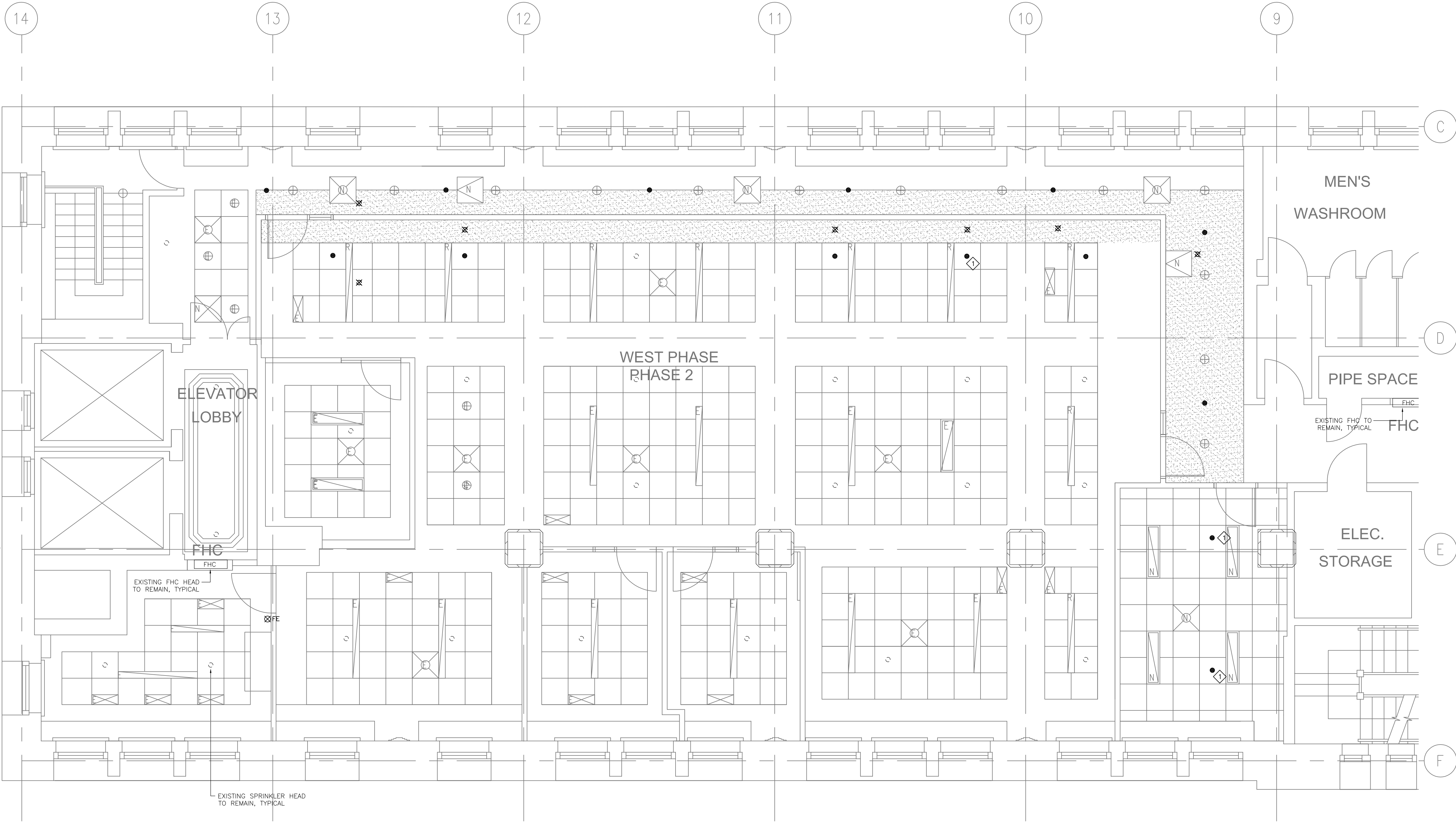
2016-09-02

project no.
no. du projet

R.079143.042

drawing no.
dessiné no.

WEST-M1.02



1 FIRE PROTECTION AND PLUMBING UPGRADE PLAN
SCALE: 1:50

GENERAL NOTES

1. THIS DRAWING INDICATES GENERAL INTENT OF DESIGN ONLY. CONTRACTOR TO VERIFY SITE CONDITION BEFORE ORDERING MATERIALS AND COMMENCING WORK. REPORT TO DEPARTMENTAL REPRESENTATIVE ANY DISCREPANCIES BETWEEN EXISTING AND DESIGN DRAWINGS.
2. PROVIDE NEW EQUIPMENT INCLUDING PIPING, FITTINGS, AND ACCESSORIES AS INDICATED.
3. COORDINATE FINAL LOCATION OF SPRINKLER HEADS AND NEW WORK WITH ALL TRADES.
4. SPRINKLERS TO BE INSTALLED IN ACCORDANCE WITH NFPA 13.
5. PROVIDE WALL MOUNTED FIRE EXTINGUISHERS IN ACCORDANCE WITH NFPA 10 AND NATIONAL FIRE CODE.

KEYNOTES

- ◊ NEW SEMI RECESSED SPRINKLER HEAD

DIALOG®

Stamp

METRIC

THIS DRAWING IS COPYRIGHTED AND MUST NOT BE USED, REPRODUCED, OR REVISED WITHOUT WRITTEN PERMISSION.

ALL DIMENSIONS ARE IN MILLIMETERS UNLESS OTHERWISE NOTED. VERIFY DIMENSIONS. DO NOT SCALE THIS DRAWING.

REPORT INCONSISTENCIES AND OMISSIONS TO THE DEPARTMENTAL REPRESENTATIVE FOR CLARIFICATION BEFORE COMMENCING WITH THE WORK.

DEVIATIONS FROM THE CONTRACT DOCUMENTS WITHOUT WRITTEN APPROVAL FROM THE DEPARTMENTAL REPRESENTATIVE ARE SUBJECT TO CORRECTION AT THE CONTRACTOR'S EXPENSE.

ARCHITECTURAL / INTERIOR DESIGN

DIALOG
2 BLOOR ST. EAST, SUITE 1100
TORONTO, ON
Tel: (416)966-0220 Fax: (416)966-0223

MECHANICAL ENGINEER

DIALOG
2 BLOOR ST. EAST, SUITE 1100
TORONTO, ON
Tel: (416)966-0220 Fax: (416)966-0223

ELECTRICAL ENGINEER

DIALOG
2 BLOOR ST. EAST, SUITE 1100
TORONTO, ON
Tel: (416)966-0220 Fax: (416)966-0223

1	ISSUED FOR BID	2016-09-02
revision		date

Do not scale drawings.
Verify all dimensions and conditions on site and immediately notify the Departmental Representative of all discrepancies.

A	Detail No.
B	No. du detail
C	drawing no. - where detail required
	dessin no. - ou detail exige
	drawing no. - where detailed
	dessin no. - ou detaillé

project title
titre du projet
DOMINION PUBLIC BUILDING

457 RICHMOND STREET
LONDON, ONTARIO
6TH FLOOR TENANT RELOCATION & OFFICE FIT UP

drawing title
titre du dessin
**FIRE PROTECTION & PLUMBING
UPGRADE PLAN**

drawn by
dessiné par
MH

designed by
conçu par
JPK

approved by
approuvé par
RD

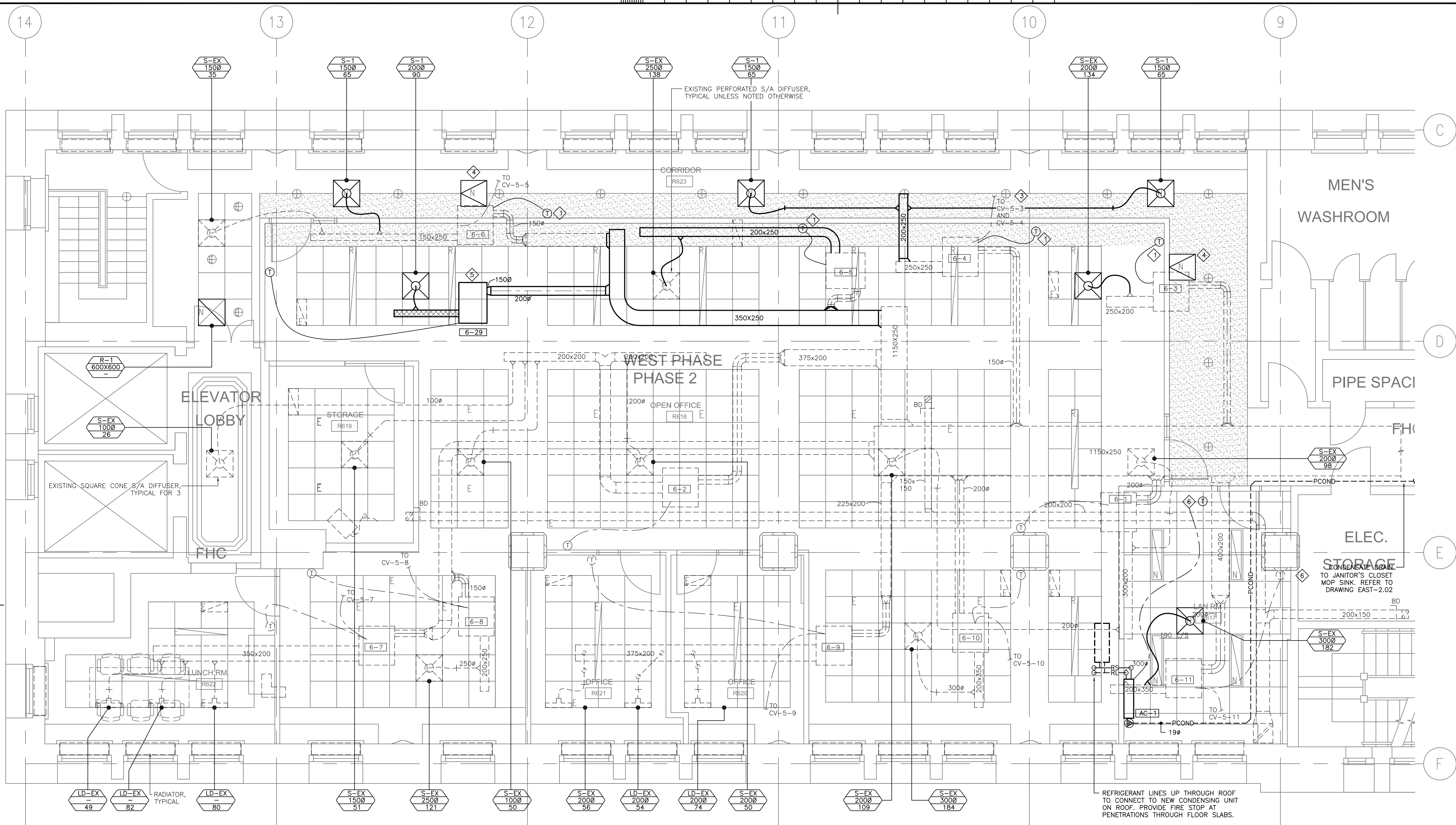
bid
offre
DA

project manager
administrateur
de projets

project date
date du projet
2016-09-02

project no.
no. du projet
R.079143.042

drawing no.
dessiné no.
WEST-M2.01

**1 HVAC UPGRADE PLAN**

M2.02 SCALE: 1:50

KEYNOTES

- 1 RELOCATED THERMOSTAT.
- 2 PROVIDE ACCESS PANEL.
- 3 REWIRE CONTROLS WIRING FOR CV-5-4 TO TERMINAL BOX 6-4. UPDATE BAS GRAPHICS TO SUIT.
- 4 NEW CEILING ACCESS PANEL FOR CONTROLS, MOTOR, AND FILTER ACCESS. FINAL LOCATION TO BE VERIFIED ON SITE AND APPROVED BY DEPARTMENTAL REPRESENTATIVE BEFORE INSTALLATION.
- 5 INTEGRATE NEW TERMINAL BOX CONTROLLER TO EXISTING BUILDING AUTOMATION SYSTEM. CONTROL POINTS AND SEQUENCE TO MATCH EXISTING. REFER TO DETAIL 1/MO.02. NOTIFY DEPARTMENTAL REPRESENTATIVE OF ANY DISCREPANCIES FOUND ON SITE.
- 6 ADJUST FAN POWER BOX AND ASSOCIATED PERIMETER RADIATOR HEATING AND COOLING SET-POINTS. IN COMPUTER ROOM TO: COOLING SET-POINT: 26°C & HEATING SET-POINT: 18°C. ADJUST AC-1 COOLING SET-POINT TO: COOLING SET-POINT: 22°C.

GENERAL NOTES

1. THIS DRAWING INDICATES GENERAL INTENT OF DESIGN ONLY. CONTRACTOR TO VERIFY EXISTING HVAC ARRANGEMENT INCLUDING BUT NOT LIMITED TO DUCT SIZE, AND CONTROL ARRANGEMENT PRIOR TO ORDERING MATERIALS AND COMMENCING WORK. REPORT TO DEPARTMENTAL REPRESENTATIVE ANY DISCREPANCIES BETWEEN EXISTING AND DESIGN DRAWINGS.
2. COORDINATE WITH ELECTRICAL CONTRACTOR TO SUPPLY POWER TO ALL EQUIPMENT AS REQUIRED.
3. CONTRACTOR TO PROVIDE OFFSETS AS REQUIRED TO SUIT EXISTING SITE CONDITIONS. WHERE DUCTS ARE SHOWN OVERLAPPING, CONTRACTOR IS TO ASSUME OFFSETS TO FACILITATE THIS ROUTING.
4. ALL BRANCHES TO BE C/W BALANCING DAMPERS.
5. CONTRACTOR IS TO CAP AND SEAL ANY SUPPLY AIR OPENINGS NOT UTILIZED FOR NEW CONNECTIONS.
6. MECHANICAL CONTRACTOR TO BALANCE EXISTING SUPPLY AIR DIFFUSERS TO NEW VALUES INDICATED ON DIFFUSER TAGS.
7. ROUND DUCT BRANCH SERVING CEILING DIFFUSERS TO MATCH DIFFUSER NECK DIAMETER, UNLESS NOTED OTHERWISE.
8. INSTALL SECURITY GRILLE ON NEW & EXISTING DUCT AS SHOWN. REMOVE, CUT, & REPAIR EXISTING DUCTWORK AS REQUIRED TO SUIT NEW SECURITY GRILLE.
9. ALL NEW SUPPLY AIR DUCTS TO BE THERMALLY INSULATED.
10. WHERE NEW FIRE DAMPERS ARE SHOWN, CUT SECTION OF DUCTWORK AS REQUIRED AND PROVIDE NEW TRANSITIONS AND FITTINGS TO SUIT FIRE DAMPER INSTALLATION.
11. ALL RELOCATED AND NEW FAN POWER TERMINAL BOXES TO BE CONNECTED TO EXISTING BAS.



Public Works and
Government Services Canada
Travaux publics et
Services gouvernementaux Canada

DIALOG

Stamp

METRIC

THIS DRAWING IS COPYRIGHTED AND MUST NOT BE USED,
REPRODUCED, OR REVISED WITHOUT WRITTEN PERMISSION.

ALL DIMENSIONS ARE IN MILLIMETERS UNLESS OTHERWISE NOTED.
VERIFY DIMENSIONS.
DO NOT SCALE THIS DRAWING.

REPORT INCONSISTENCIES AND OMISSIONS TO THE DEPARTMENTAL
REPRESENTATIVE FOR CLARIFICATION BEFORE COMMENCING WITH
THE WORK.

DEVIATIONS FROM THE CONTRACT DOCUMENTS WITHOUT
WRITTEN APPROVAL FROM THE DEPARTMENTAL REPRESENTATIVE
ARE SUBJECT TO CORRECTION AT THE CONTRACTOR'S EXPENSE.

ARCHITECTURAL / INTERIOR DESIGN

DIALOG
2 BLOOR ST. EAST, SUITE 1100
TORONTO, ON
Tel: (416)966-0220 Fax: (416)966-0223

MECHANICAL ENGINEER

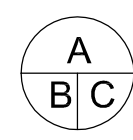
DIALOG
2 BLOOR ST. EAST, SUITE 1100
TORONTO, ON
Tel: (416)966-0220 Fax: (416)966-0223

ELECTRICAL ENGINEER

DIALOG
2 BLOOR ST. EAST, SUITE 1100
TORONTO, ON
Tel: (416)998-0220 Fax: (416)966-0223

revision	date
1	ISSUED FOR BID
2016-09-02	

Do not scale drawings.
Verify all dimensions and conditions on site and immediately notify the
Departmental Representative of all discrepancies.



- A Detail No.
No. du détail
B drawing no. - where detail required
dessin no. - ou détail exigé
C drawing no. - where detailed
dessin no. - ou détaillé

project title
titre du projet**DOMINION PUBLIC BUILDING**

457 RICHMOND STREET
LONDON, ONTARIO

6TH FLOOR TENANT RELOCATION & OFFICE FIT UP

drawing title
titre du dessin
HVAC UPGRADE PLAN

drawn by
dessiné par
MH

designed by
conçu par
JPK

approved by
approuvé par
—

bid
offre
DA

project manager
administrateur
de projets

project date
date du projet
2016-09-02

project no.
no. du projet
R.079143.042

drawing no.
dessiné no.
WEST-M2.02

**2 PHOTO OF ROOF**

M2.02 SCALE: 1:50