



S-5





S-5

DANGER **DANGER**

HIGH VOLTAGE **HAUTE TENSION**





WARNING
HIGH VOLTAGE
DANGER

70000



F.R.P.D.
NOV 24 2011





FEDERAL
PIONEER

VANCOUVER

AMPS.	400	208/120	VOLTS		
NO.	10648-2	60	CYC.	3-4	φ-WIRE



Testing Laboratories

LL-7160 | S-11

APPROVED SWITCHGEAR ASSEMBLY PANEL

FEDERAL

FEDERAL
PIONEER

VANCOUVER

AMPS.

400

208/120

VOLTS

NO.

10648-2

60

CYC.

3-4

φ-WIRE



Testing Laboratories

LL-7160

S-11

APPROVED SWITCHGEAR ASSEMBLY PANEL

MAY & CHRISTE GMBH TRANSFORMER

STYLE	DC	SERIAL	10483		
RATED KVA	11255	FILE	A51474		
PRI. VOLTS	230	SEC. VOLTS	208		
RATED AMPS.	15.6	TYPE	24A		
	1 4355	HZ	60	PHASE	3
	2 4255	% IZ	5.43	BIL	75
	3 4155	VECTOR GROUP	5NN1		
	4 4055	INSUL. CLASS	F		
	5 3955	TEMP. RISE °C.	100		
		WT. LBS.	2380		

VOLTS
AT FC TAP
POSITION

MADE FOR ELECTRIC POWER EQUIPMENT LTD

FPE FEDERAL PIONEER
VANCOUVER

MAY & CHRISTE GMBH TRANSFORMER

STYLE	DC	SERIAL	10483
RATED KVA	112.5	FILE	A51474
PRI. VOLTS	4160	SEC. VOLTS	208
RATED AMPS.	15.6	TYPE	2A
	1 4368	HZ	60 PHASE 3
	2 4064	% IZ	6.48 75
	3 4160	VECTOR GROUP	DY11
VOLTS AT FC TAP POSITION	4 4066	INSUL. CLASS	F
	5 3962	TEMP. RISE °C	100
		WT. LBS	1950

MADE FOR ELECTRIC POWER EQUIPMENT LTD.

SP

112.5 KVA
4160/208/120 V
60 Hz 3-4

10648-2

APPROVED SWITCHGEAR ASSEMBLY PANEL

JOB #: _____
 DATE: _____
 TESTED BY: _____

POWER EQUIPMENT LTD

F P E
F E D E R A L
P I O N E E R

VANCOUVER

AMPS

112.5KVA

4160-208/120

VOLTS

NO.

10648-2

60

CYC.

3-4

WIRE



Testing Laboratories

LL-7160

S-11

APPROVED SWITCHGEAR ASSEMBLY PANEL

JOB #: _____

DATE: _____

TESTED BY: _____

MAY & CHRISTE GMBH TRANSFORMER

STYLE

DC

SERIAL

10483

RATED KVA

112.5

FILE

A51474

PRI. VOLTS

4160

SEC. VOLTS

208

RATED AMPS.

15.6

TYPE

AA

1

4368

HZ

60

PHASE

3

2

4264

% IZ

6.45

OIL KV

75

VOLTS

3

4160

VECTOR GROUP

DYN 1

AT 5C TAP

4

4036

INSUL. CLASS

F

POSITION

5

3952

TEMP. RISE °C

100

WT. LBS.

3500

MADE FOR

ELECTRIC POWER EQUIPMENT LTD.

02-11

MAY & CHRISTE GMBH TRANSFORMER

STYLE

DE

SERIAL

10483

RATED KVA

112.5

FILE

A51474

PRI. VOLTS

4160

SEC. VOLTS

208

RATED AMPS.

15.6

TYPE

2A

HZ

60

PHASE

3

% IZ

6.43

75

VECTOR GROUP

DY11-2

INSUL. CLASS

F

TEMP. RISE °C

100

WT. LBS

1350

VOLTS
AT FC TAP
POSITION

1

4368

2

4264

3

4160

4

4056

5

3952

MADE FOR

ELECTRIC POWER EQUIPMENT LTD

S-5

DANGER **DANGER**

HIGH VOLTAGE **HAUTE TENSION**





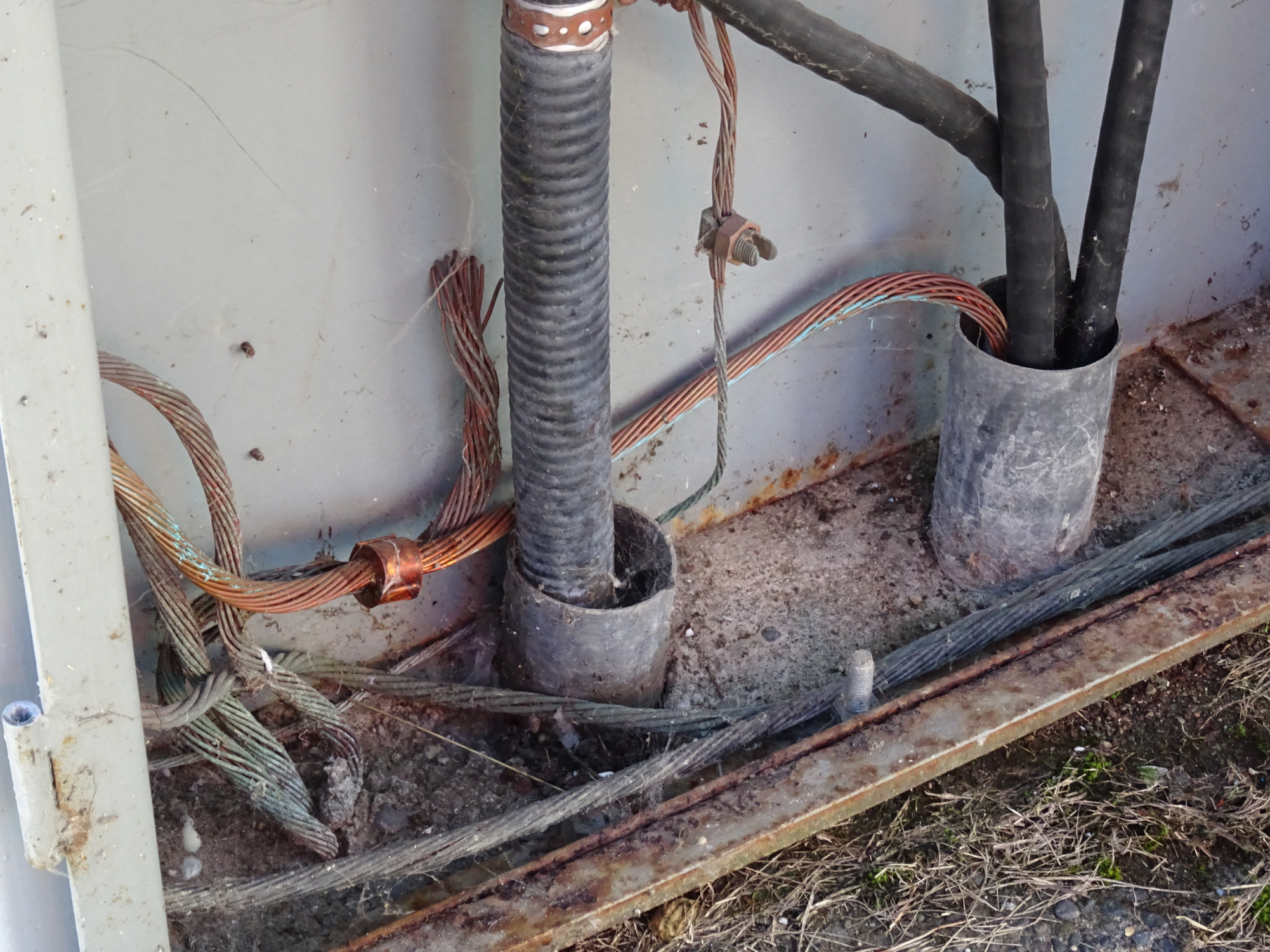
S-5

DANGER **DANGER**
HIGH VOLTAGE HAUTE TENSION











CHROMALOX AR 1004



SW SUB 5


05-200-07

FEDERAL POWER LIMITED


S5-89-MPT5

⚠ DANGER
High Voltage
Electrical Equipment
Can Cause
Death or
Serious Injury
Do Not
Touch
Exposed
Parts
When
Power
Is
Applied


TESTED BY: [unclear]
PWGSC 05-200-07

 EQUIPMENT I.D. NUMBER
LOCATION 3328

FEDERAL PIONEER LIMITED



TYPE	I.S.
K.V.	5
AMPS.	600
I.G. AMPS.	600
MOM. AMPS.	40000
IMPULSE K.V.	60 BIL
FREQ.	60
FAULT CLOSING	40 K.A SYM
SER. NO.	I.S. 5902



MPT5

[unclear]
[unclear]
[unclear]

DATE: 12/17/15
TESTED BY: [Signature]
PW 030 05-200-07

EQUIPMENT I.D. NUMBER:
LOCATION: 2399

FEDERAL PIONEER LIMITED
FPE

TYPE	I.S.
K.V.	5
AMPS.	600
I.C. AMPS.	600
MOM. AMPS.	5 1/2
IMPULSE K.V.	5 1/2
FRSQ	60
FAUSE CLOSING	4 K.A.SYM
SER. NO.	15 2 3 7 2

S5-89-MPT5

⚠ DANGER
Arc Flash and Shock Hazard
Appropriate PPE Required

1.3 inch Flash Protection Boundary
9.5 cal/cm² Incident Energy at 18 inches
Clothing: Heavyweight Cotton (See NFPA 70E for PPE)
Arc Rating: Shock Hazard when cover is removed
U.S. Standard Approach
2.0 ft. Restricted Approach
0.5 ft. Forbidden Approach
See NFPA 70E

Model: S5B 89 MPT 500 Date: 05-19-2008

Trade names are used where necessary to identify specific products mentioned in OSHA approved safety data sheets. All electrical equipment is for use outdoors. In such circumstances, additional equipment will be installed. These products are manufactured under license from the U.S. Patent and Trademark Office. © 2008 Federal Pioneer Limited. All rights reserved. See NFPA 70E.










MAY & CHRISTE GMBH TRANSFORMER

STYLE	DC	SERIAL	10483
RATED KVA	112.5	FILE	251474
PRI. VOLTS	4160	SEC. VOLTS	208
RATED AMPS.	15.6	TYPE	123
	1 4368	HZ	60 PHASE 3
	2 4236	V17	6243 75
	3 4060	VECTOR GRAD	DIST. 1
VOLTS AT FC TAP POSITION	4 4036	INSUL. CLASS	F
	5 3952	TEMP. RISE °C	100
		WT. LBS	1950

MADE FOR ELECTRIC POWER EQUIPMENT LTD



 INSTITUTION OF ELECTRICAL AND ELECTRONICS ENGINEERS

APPROVED SWITCHGEAR ASSEMBLY PANEL

112.5 KVA 1180-208/220
 10800-2 60 5.4

Approved Switchgear Assembly Panel
 1180 112.5 KVA



JOB # _____
 DATE _____
 TESTED BY _____



⚠ DANGER
WARNING: High Voltage
Electrical Shock Hazard
Do not touch any electrical
parts or wires unless you are
qualified to do so. If you are
not qualified, contact a
qualified electrician.

85-200-01


PANEL A

85-200-01

"MF" PEDISTALS

⚠ DANGER
WARNING: High Voltage
Electrical Shock Hazard
Do not touch any electrical
parts or wires unless you are
qualified to do so. If you are
not qualified, contact a
qualified electrician.

⚠ DANGER
Arc Flash and Shock Hazard
Appropriate PPE Required

 1. Insulate - Flash Protection Boundary
2. Insulate - Arc Flash Boundary of 18 inches
3. PPE - Appropriate PPE, See NFPA 70E for PPE
4. OSHA - OSHA requires when cannot be avoided
5. OSHA - Limited Approach
6. OSHA - Restricted Approach
7. OSHA - Prohibited Approach
8. OSHA - See NFPA 70E

Model Number: 48PFL0008
Date: 05-20-08
Serial: 05-12-08

Not to be used for any other purpose. Always observe proper safety practices. © 2008 Eaton. All rights reserved. Reproduction without permission is prohibited. Eaton and the Eaton logo are trademarks of Eaton Corporation. Eaton Corporation, Eaton, Eaton logo and the Eaton logo are registered trademarks of Eaton Corporation. Eaton Corporation, Eaton, Eaton logo and the Eaton logo are registered trademarks of Eaton Corporation.

EQUIPMENT ID NUMBER
05-200-08
LOCATION
3331

PNSSC 05-200-08

Schneider
Electric
05-200-08

EQUIPMENT ID NUMBER
05-200-09
LOCATION
3332

PNSSC 05-200-09



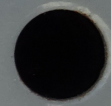
PANEL A



"MF" PEDISTALS

FLAME RETARDANT 450 VOLT





"MF

EQUIPMENT I.D. NUMBER
05-200-08
LOCATION
5331

PWGSC 05-200-08

ANGER

Shock and Arc Flash Hazard
Minimum PPE Required

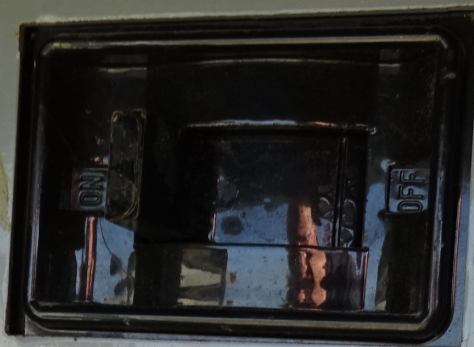
Available Resources:
Energy of 18 inches:
SA (SA, SW, WPA, TSE) for PPE
SA (SA, SW, WPA, TSE) for PPE
SA (SA, SW, WPA, TSE) for PPE
SA (SA, SW, WPA, TSE) for PPE

Date: 05-19-2008

Schneider
Electric
Raleigh, N.C.
Tel: (252) 704-1177
Date: June 08

EQUIPMENT I.D. NUMBER
05-200-09
LOCATION
3332


PWGSC 05-200-09



"MF"

⚠ DANGER

Arc Flash and Shock Hazard
Appropriate PPE Required



0.3 inch	Flash Protection Boundary
0.1 cal/cm ²	Incident Energy at 18 inches
0.4 P	Hazard/Risk Cat. See NFPA 70E for PPE
208 VAC	Shock Hazard when cover is opened
10.0 ft	Limited Approach
1 ft	Restricted Approach
0.1 ft	Prohibited Approach

Eqpt. Name: 55 PML A OZCP: 6071 Date: 05-18-2008

Data values on this label are provided by Schneider Canada Services analysis performed on OZCP shown above. Any modification of equipment, adjustment of trip settings, or failure to properly maintain equipment will invalidate these values. For more information contact Schneider Canada Services at 1 800 285 3374.



 PUSH

10000V 100% FLAME RETARDANT

550T 10W2



DANGER

Arc Flash and Shock Hazard Appropriate PPE Required



- 0.3 inch Flash Protection Boundary
- 0.1 cal/cm² Incident Energy at 18 inches
- Cat 0 Hazard/Risk Cat. See NFPA 70E for PPE
- 208 VAC Shock Hazard when cover is opened
- 10.0 ft Limited Approach
- 1 ft Restricted Approach
- 0.1 ft Prohibited Approach

} Boundaries
See NFPA 70E

Date: 05-19-2008

Q2C#: 6071

Eqpt. Name: S5 PNL A

Data values on this label are provided by Schneider Canada Services analysis performed on Q2C# shown above. Any modification of equipment, adjustment of trip unit settings, or failure to properly maintain equipment will invalidate these values.
For more information contact Schneider Canada Services at 1 800 265 3374.

Terminal block with 23 positions. Position 5 has a blue terminal cap and a white label with the number 3151002. Position 17 has a black terminal cap with the number 50. Position 18 has a black terminal cap with the number 50.

- 1
- 2
- 3
- 4
- 5
- 6
- 7
- 8
- 9
- 10
- 11
- 12
- 13
- 14
- 15
- 16
- 17
- 18
- 19
- 20
- 21
- 22
- 23

Terminal block with 24 positions. Position 10 has a white label with the number 50. Position 11 has a white label with the number 50. Position 12 has a white label with the number 50. Position 13 has a white label with the number 50. Position 14 has a white label with the number 50. Position 15 has a white label with the number 50. Position 16 has a white label with the number 50. Position 17 has a white label with the number 50. Position 18 has a white label with the number 50. Position 19 has a white label with the number 50. Position 20 has a white label with the number 50. Position 21 has a white label with the number 50. Position 22 has a white label with the number 50. Position 23 has a white label with the number 50. Position 24 has a white label with the number 50.

KINETIC TRAILOR



09

15

16

09

17

18

19


20

21

22

23

24

 **Westinghouse**
 PANELBOARD / PANNEAUX

BREAKER IS TRIPPED WHEN HANDLE IS IN A POSITION MIDWAY BETWEEN "ON" AND "OFF". TO RESET - MOVE HANDLE TO "OFF" POSITION THEN TO "ON".

LE DISJONCTEUR EST DECLENCHÉ QUAND LE MANCHON EST À MI-CHEMIN ENTRE LA POSITION OUVERTE ET LA POSITION FERMÉE. POUR REFERMER - POUSSER LE MANCHON LA POSITION OUVERTE ET EN SUIVRE DANS LA POSITION FERMÉE.

TYPE NOD
225 A 120/208 V
3 PH 4 W 60 HZ

WESTINGHOUSE CANADA LIMITED
 VANCOUVER
 B.C.
 688A63101

KINETIC
TRAINING



21

22

23

24



Westinghouse

PANELBOARD / PANNEAUX

TYPE NOB

225 A 120/208 V

3 PH 4 W 60 HZ

BREAKER IS TRIPPED WHEN HANDLE IS IN A POSITION MIDWAY BETWEEN "ON" AND "OFF". TO RESET - MOVE HANDLE TO "OFF" POSITION THEN TO "ON".

LE DISJONCTEUR EST DECLENCHE QUAND LE MANCHON EST A MI-CHEMIN ENTRE LA POSITION OUVERTE ET LA POSITION FERMEE. POUR REFERMER POUSSER LE MANCHON LA POSITION OUVERTE ET ENSUITE DANS LA POSITION FERMEE.

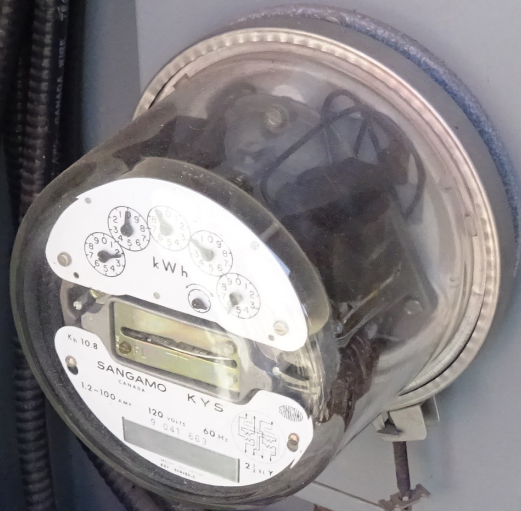
WESTINGHOUSE CANADA LIMITED
VANCOUVER
B.C.

688A683HO1



ALLEN-BRADLEY

EQUIPMENT I.D. NUMBER
LOCATION 3371
PWSSC 05-470-02



CANADA WIRE TECK 90 (34) MINUS 40° F

FLAME RETARDANT CANADA WIRE TECK 90 MINUS 40° F

FLAME RETARDANT 500 VOLTS

FLAME RETARDANT 1000V