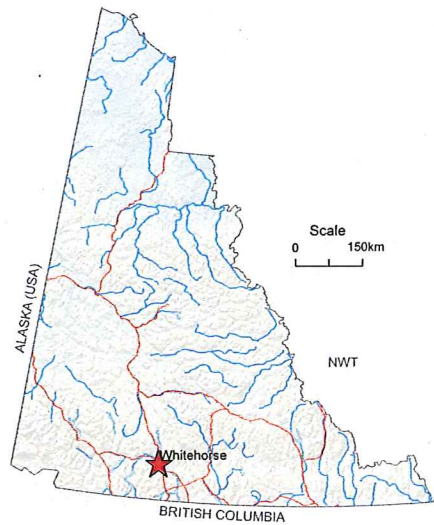
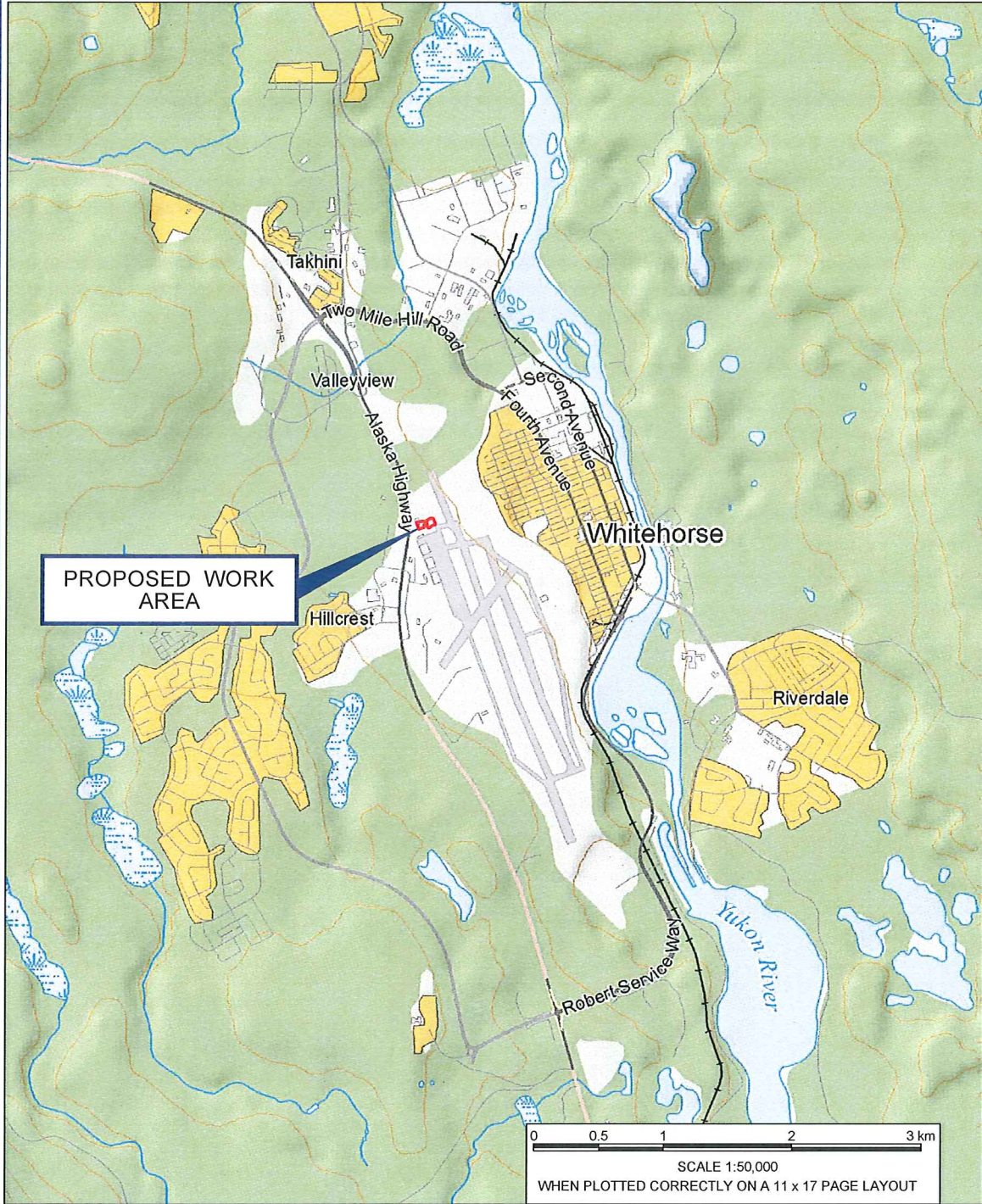


# DRAWINGS



Cadfile name: S\_205-03819-00001-A1.dwg



NOTES:  
REFERENCED FROM GOVERNMENT OF YUKON GIS DATA AND  
CITY OF WHITEHORSE GIS OPEN DATA. IMAGERY: © 2016  
GOVERNMENT OF YUKON (IMAGE DATE: 2011).

BASEDATA:  
© Department of Natural Resources Canada, All rights reserved;  
National Road Network, National Railway Network Geobase®,  
Downloaded March 2014; Waterbodies 50k, GeomaticsYukon,  
Downloaded August 2016; Watercourses 50k, GeomaticsYukon,  
Downloaded August 2016; Contours 50k, GeomaticsYukon,  
Downloaded August 2016;

- |                  |                         |
|------------------|-------------------------|
| — Rail Line      | — Expressway / Highway  |
| — Contour (10m)  | — Arterial              |
| — Watercourse    | — Local / Street        |
| — Wetlands       | — Resource / Recreation |
| — Buildings      |                         |
| — Wooded Area    |                         |
| — Developed Area |                         |

- LEGEND:
- PROPERTY BOUNDARY
  - WORK AREA
  - PROPOSED TRUCKING ROUTE



0 0.2 0.4 0.8 1.2 km  
SCALE 1:20,000  
WHEN PLOTTED CORRECTLY ON A 11 x 17 PAGE LAYOUT  
NAD 1983 UTM Zone 8 V

THIS DRAWING IS FOR CONCEPTUAL PURPOSES ONLY. ACTUAL  
LOCATIONS MAY VARY AND NOT ALL STRUCTURES ARE SHOWN.

PUBLIC WORKS AND GOVERNMENT SERVICES  
ON BEHALF OF TRANSPORT CANADA  
WHITEHORSE INTERNATIONAL AIRPORT  
316-75 BARKLEY GROW CRESCENT  
WHITEHORSE, YUKON

2016 NORTH APRON REMEDIAL EXCAVATION

SITE LOCATION

Date: September 8, 2016

Project No. 205.03819.00000

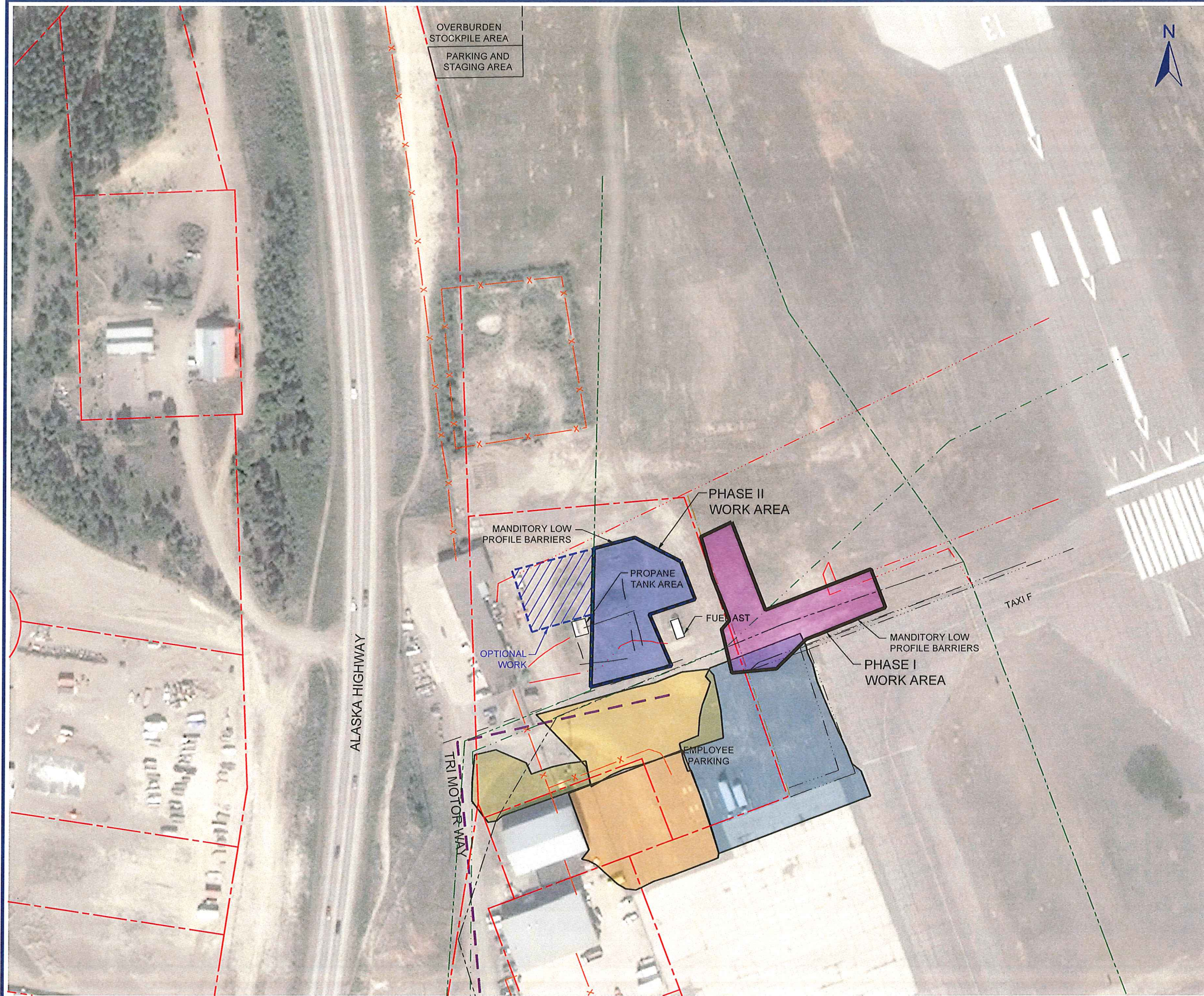
Drawing No.

1





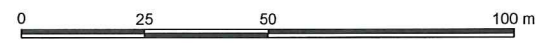
Cadfile name: S\_205-03819-00001-A1.dwg



NOTES:  
REFERENCED FROM GOVERNMENT OF YUKON GIS DATA AND CITY OF WHITEHORSE GIS OPEN DATA, 2015 NORTH APRON REMEDIATION, WHITEHORSE INTERNATIONAL AIRPORT, WHITEHORSE, YUKON TERRITORY CONDUCTED BY ARCADIS CANADA INC. DATED MARCH 2016. IMAGERY: © 2016 GOVERNMENT OF YUKON (IMAGE DATE: 2011).

UTILITY LOCATIONS ARE APPROXIMATE.

- LEGEND:
- PROPERTY BOUNDARY
  - 2016 PROPOSED AIRSIDE WORK AREA
  - PROPOSED SITE ACCESS ROUTE
  - FENCE
  - PROPOSED 2016 EXCAVATION
  - 2015 EXCAVATION
  - 2013 EXCAVATION
  - 2010 EXCAVATION
  - 2009 EXCAVATION
  - 2008 EXCAVATION
  - UTILITIES
    - U/G FUEL PIPELINE
    - U/G ELECTRICAL LINE
    - U/G ELECTRICAL LINE (ABANDONED)
    - U/G SANITARY SEWER LINE
    - U/G SANITARY SEWER LINE (ABANDONED)
    - U/G STORM SEWER LINE
    - U/G STORM SEWER LINE (ABANDONED)
    - U/G WATER LINE (ABANDONED)
    - U/G UNKNOWN LINE



SCALE 1:1,500  
WHEN PLOTTED CORRECTLY ON A 11 x 17 PAGE LAYOUT  
NAD 1983 UTM Zone 8 V

THIS DRAWING IS FOR CONCEPTUAL PURPOSES ONLY. ACTUAL LOCATIONS MAY VARY AND NOT ALL STRUCTURES ARE SHOWN.

PUBLIC WORKS AND GOVERNMENT SERVICES  
ON BEHALF OF TRANSPORT CANADA  
WHITEHORSE INTERNATIONAL AIRPORT  
316-75 BARKLEY GROW CRESCENT  
WHITEHORSE, YUKON

2016 NORTH APRON REMEDIAL EXCAVATION

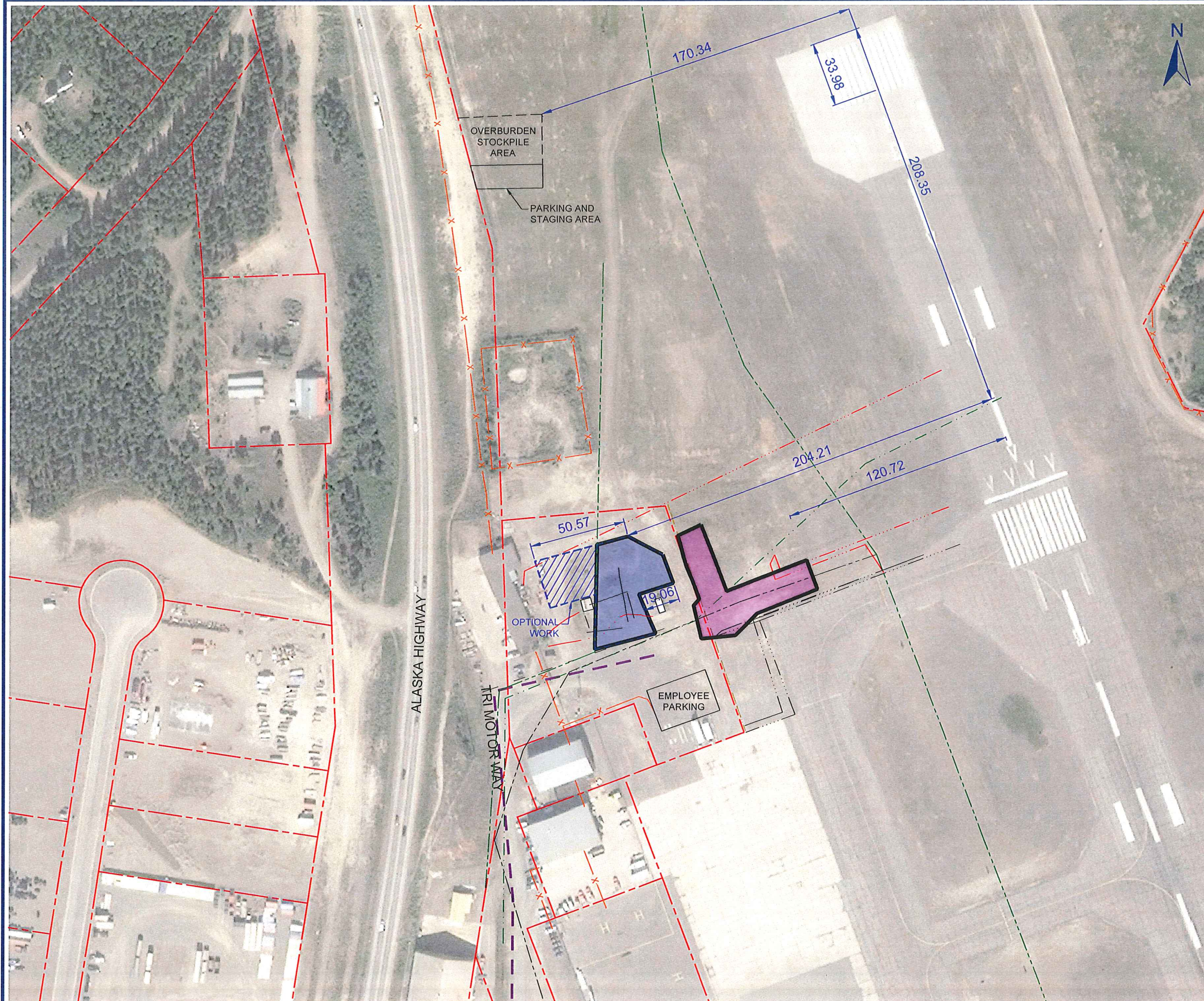
PROPOSED WORK AREAS AND ACCESS

Date: October 17, 2016	Drawing No.
Project No. 205.03819.00000	2





Cadfile name: S\_205-03819-00001-A1.dwg



NOTES:  
REFERENCED FROM GOVERNMENT OF YUKON GIS DATA AND CITY OF WHITEHORSE GIS OPEN DATA, 2015 NORTH APRON REMEDIATION, WHITEHORSE INTERNATIONAL AIRPORT, WHITEHORSE, YUKON TERRITORY CONDUCTED BY ARCADIS CANADA INC. DATED MARCH 2016. IMAGERY: © 2016 GOVERNMENT OF YUKON (IMAGE DATE: 2011).

UTILITY LOCATIONS ARE APPROXIMATE.

LEGEND:

- PROPERTY BOUNDARY
- 2016 PROPOSED AIRSIDE WORK AREA
- PROPOSED SITE ACCESS ROUTE
- FENCE
- PROPOSED 2016 EXCAVATION
- 2015 EXCAVATION
- UTILITIES
  - U/G FUEL PIPELINE
  - U/G ELECTRICAL LINE
  - U/G ELECTRICAL LINE (ABANDONED)
  - U/G SANITARY SEWER LINE
  - U/G SANITARY SEWER LINE (ABANDONED)
  - U/G STORM SEWER LINE
  - U/G STORM SEWER LINE (ABANDONED)
  - U/G WATER LINE (ABANDONED)
  - U/G UNKNOWN LINE



0 20 40 80 120 m

SCALE 1:2,000

WHEN PLOTTED CORRECTLY ON A 11 x 17 PAGE LAYOUT  
NAD 1983 UTM Zone 8 V

THIS DRAWING IS FOR CONCEPTUAL PURPOSES ONLY. ACTUAL  
LOCATIONS MAY VARY AND NOT ALL STRUCTURES ARE SHOWN.

PUBLIC WORKS AND GOVERNMENT SERVICES  
ON BEHALF OF TRANSPORT CANADA  
WHITEHORSE INTERNATIONAL AIRPORT  
316-75 BARKLEY GROW CRESCENT  
WHITEHORSE, YUKON

2016 NORTH APRON REMEDIAL EXCAVATION

WORK AREA LAYOUT

Date: October 17, 2016

Project No. 205.03819.00000

Drawing No.

3

