

SECTION AT "XX" LOOKING AFT.

TAPPED HOLE TO BE MARKED OFF & DRILLED FROM TUBE GUARD

4-1 1/2 DIA HOLES FOR 1 1/2 DIA HOLDING DOWN BOLTS

HALF BOLTING PLAN.

HALF PLAN VIEW

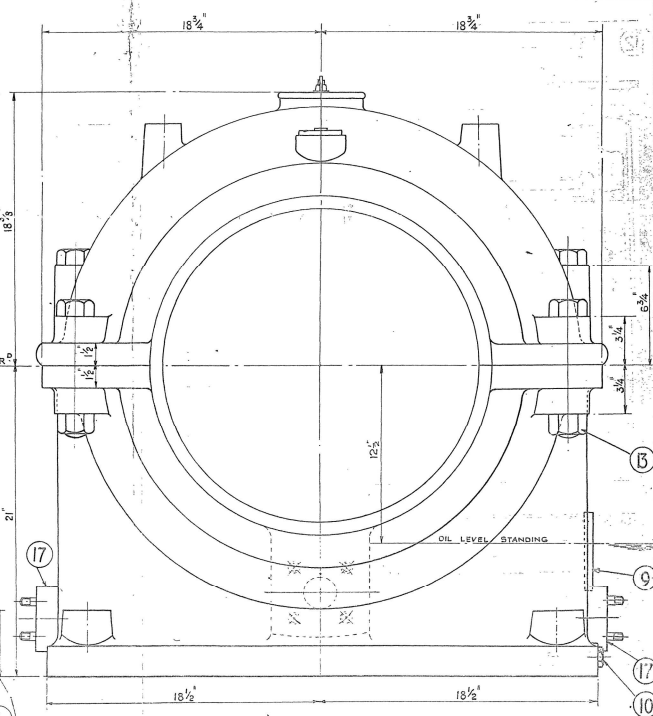
Oil Inlet To Take Std 2 Bore

Flange 4 1/2 DIA WITH 4-1/2 UNF STUDS (1/2 STAND)

ON 3/8 TUBES FILLING WITH 3/4 INCH

2 HOLES REAMED 5/8 DIA FOR DOWELS DIAGONALLY OPPOSITE EACH OTHER & IN THIS POSITION FOR ALL BEARINGS

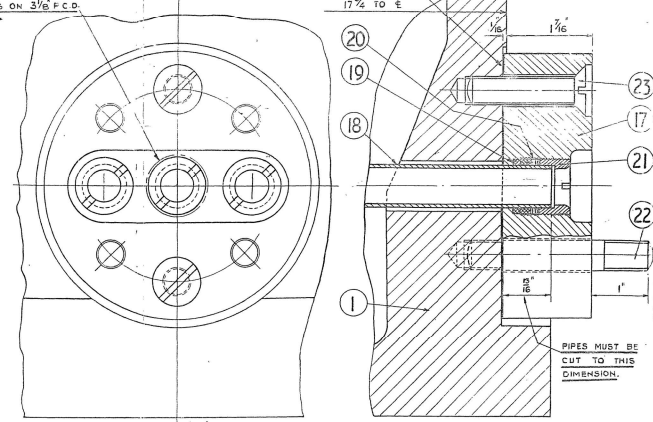
22MA/44770/2



VIEW ON AFT END.

WATER INLET & OUTLET (TUBESPLATE) AT OPPOSITE SIDES OF BEARING TO TAKE STD ASA FLANGES FOR 1 BORE PIPES

EACH FLANGE 4 1/2 DIA WITH 4-1/2 UNF STUDS ON 3/8 F.C.D.



PART OUTSIDE VIEW. PART SECTION AT "YY."

PART VIEWS SHOWING TUBEPLATE

SCALE: FULL SIZE.

WATER TEST PRESSURE - INDIVIDUAL TUBES TESTED AT 1000 LBS/SQ IN AFTER COMPLETION OF SYSTEM - 50 LBS/SQ IN.

1/2 OIL INLET & OUTLET CONNECTIONS MODIFIED 28 JUNE 65

REF	PART NO	PART NAME	NO OFF	MATERIAL	REMARKS
1	0522/3047	CASING BOTTOM AS DRAWN	1	CAST STEEL	WHITEMETAL LINED.
2	0722/423	CASING TOP	1	CAST STEEL	WHITEMETAL LINED.
3	7807/57	INSPECTION DOOR	1	PERSPEX	WHITEMETAL LINED.
4	8044/2000	JOURNAL PAD	2	"	"
5	774/72	JOURNAL PAD STOP	2	"	"
6	7850/626	OIL THROWER RING	1	ALUM. ALLOY	"
7	757/22	OIL SCRAPER	1	GUNMETAL	"
8	74201/336	OIL DEFLECTOR	2	ALUM. ALLOY	STD. N° 3 1/4
9	74706/227	OIL LEVEL GAUGE	1	PERSPEX	STD. 4" (UNF)
10	7235/234	OIL DRAIN PLUG	1	MILD STEEL	STD. 1/2 NPT.
11		HANG NUTS	2	"	STD. 3/8 UNC
12		STUDS	2	MILD STEEL	STD. 3/8 UNC X 1 1/2 LONG.
13		JOINT BOLT & NUTS	4	"	STD. 1/4 UNC X 7 7/8 LONG.
14		JOINT TAPBOLTS	2	"	STD. 1/4 UNC X 8 LONG.
15		KD HD. SCREWS	4	"	STD. 5/16 UNC X 1 1/2 LONG.
16		TAPBOLTS	4	"	STD. 3/4 UNC X 6 LONG.
17	787/157	TUBE PLATE	2	R.N. BRASS	"
18		TUBES	3	CUPRO-NICKEL	EACH 3/4 DIA X 18 1/2 X 3 1/2 LONG
19		METALLIC PACKING RING	12	"	CONC. AT 60 IN. - 885 7/8 X 1 1/2 X 1 1/2
20		FIRE PACKING RING	6	"	CRANE NO. 502 - 885 7/8 X 1 1/2 X 1 1/2
21		FERULITES	6	CUPRO-NICKEL	CRANE PACKING LTD. DSG. N° 2 1938.
22		STUDS & NUTS	8	MILD STEEL	STD. 1/2 UNC X 3 1/2 LONG.
23		CSK SCREWS	4	"	STD. 1/2 UNC X 1 1/2 LONG.
24	7218/151	TUBE GUARD	1	"	SECURED BY 1 1/2" DIA. TAPBOLT 1/2" DIA.
25	7230/27	SPRINGS	1	"	1000 LBS. 4 1/2 DIA. 2 1/2 X 1 1/2
26		DOWELS	2	"	1000 LBS. 4 1/2 DIA. 2 1/2 X 1 1/2
27	7275/372	JOINT	2	"	1000 LBS. 4 1/2 DIA. 2 1/2 X 1 1/2
28		WASHER	2	"	1000 LBS. 4 1/2 DIA. 2 1/2 X 1 1/2
29	7252/259	RESTRICTION PLATE	1	"	1000 LBS. 4 1/2 DIA. 2 1/2 X 1 1/2
30		OIL INLET STUDS & NUTS	4	"	1/2 UNC X 1 1/2 LONG.
31		OIL OUTLET	4	"	1/2 UNC X 1 1/2 LONG.

BEARINGS ARE OF THE SELF LUBRICATING TYPE PROVIDED WITH COOLING TUBES CIRCULATING SEA OR RIVER WATER. 8 INCH BE OPERATED ON THIS PRINCIPLE FOR NORMAL DUTY. THE GRAVITY CIRCULATING OIL SYSTEM IS FITTED IN ORDER TO ASSIST LUBRICATION & TO MAKE SURE THAT THE BEARINGS ARE PROPERLY LUBRICATED AT BREAKAWAY SPEED AFTER & WHEN THE SHAFTS HAVE BEEN SALVED DUE TO HEAVY ICE CONDITIONS.

OIL CAPACITY OF CASING (APPROX.) 7.5 GALLONS

SHAFT DIA. 22.0 IN.

REVS. PER MIN. 104 MAX.

JOURNAL LOAD 15000 LBS

JOURNAL SURFACE (PROJECTED) 276 SQ. IN.

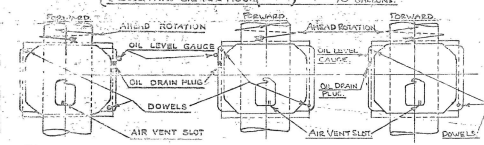
JOURNAL PRESSURE 54 LBS/SQ IN.

DIAMETRAL OIL CLEARANCE .026 IN.

HEAT GENERATED (BASED ON WHP) 124 BTU/HOUR

COOLING WATER PER HOUR 150 GALLONS

CIRCULATING OIL PER HOUR 70 GALLONS



KEY PLAN - TRIPLE CREW SHIP

DATE	ORDER NO	FOR MESSRS	ENG. NO	NO OF SPARES	REQUIS	REMARKS
21 MAR 65	65962	CANADIAN VIKINGS LTD	MULL	1	1	THIS ORDER ONLY COVERED
21 MAR 65	67765	"	"	1	1	THIS ORDER ONLY COVERED

MICHELL AFTERMOST BEARING.

SELF-LUBRICATING TYPE. MA. WATER COOLED BY TUBES.

SCALE: 1/2 SIZE & AS MARKED.

22MA/44770/2

1 - 1 JUNE 65 - DRAWING FINISHED OFF.