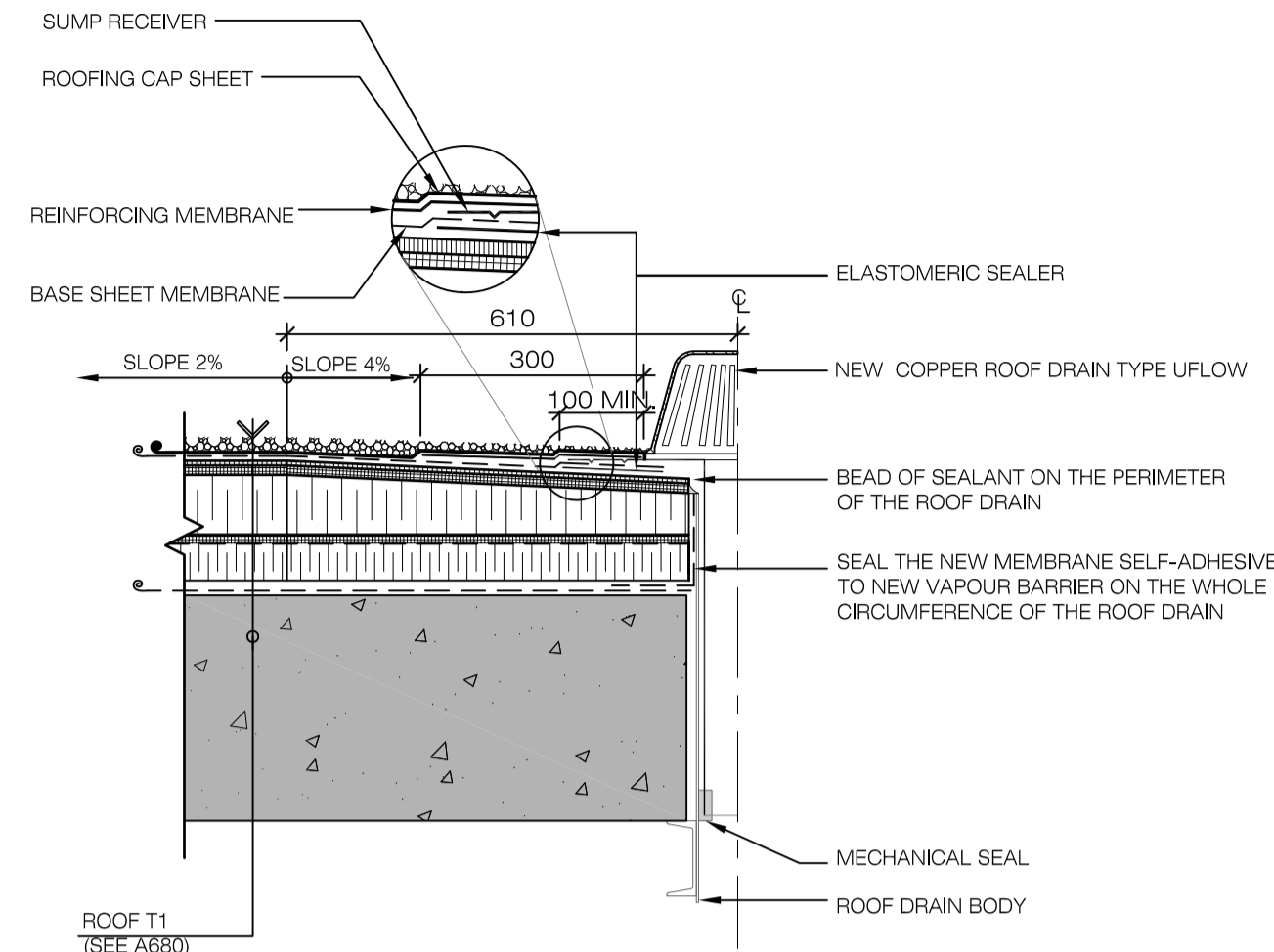


1A TYPICAL DEMOLITION DETAIL BASIN DRAIN
680 1:10

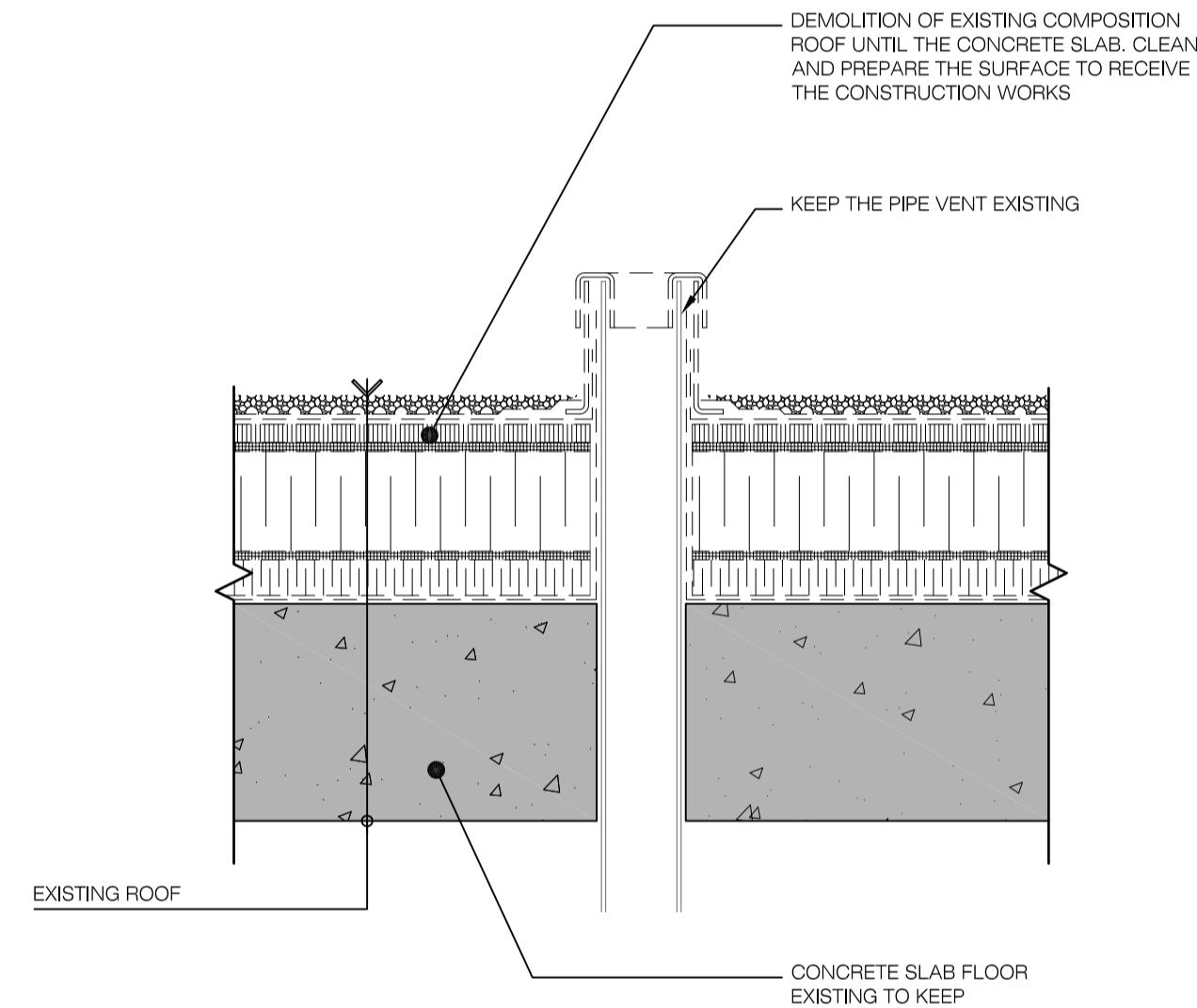


1B TYPICAL CONSTRUCTION DETAIL BASIN DRAIN
680 1:10

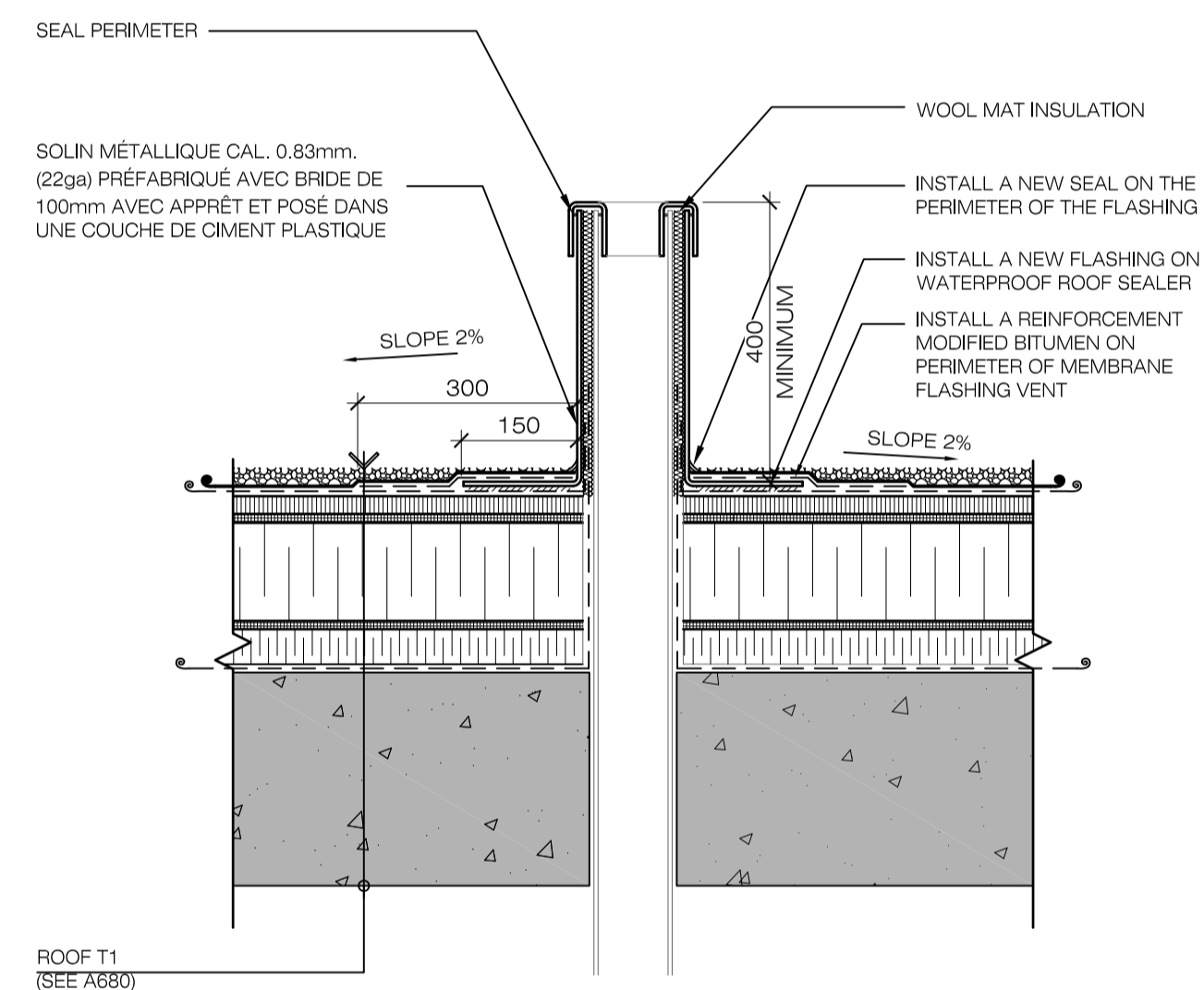
NOTES:
INSTALL THE DRAIN MAKE SURE THAT THERE IS NO SPILL WATER AROUND THE DRAIN AFTER INSTALLATION OF MEMBRANE.

DESCRIPTION T1 (TAPERED INSULATION)		
MATERIAL	THICKNESS (mm)	THERMAL RESISTANCE (RSI)
-WHITE MARBLE	13	0.01
-OUTSIDE LAYER OF AIR	N/A	0.03
-ROOFING CAP SHEET (ELASTOMER MEMBRANE)	N/A	0.03
-BASE SHEET MEMBRANE (ELASTOMER MEMBRANE)	N/A	0.03
-FIRE RESISTANT ROOF PANELS HIGH STRENGTH COATED	25	0.65
-TAPERED INSULATION (EXPANDED POLYSTYRENE)	38 MIN	1.14
-INSULATION (EXTRUDED POLYSTYRENE)	75	2.62
-VAPOUR BARRIER	0.005	0.022
-CONCRETE SLAB FLOOR EXISTING	±305	0.39
	±443	4.92

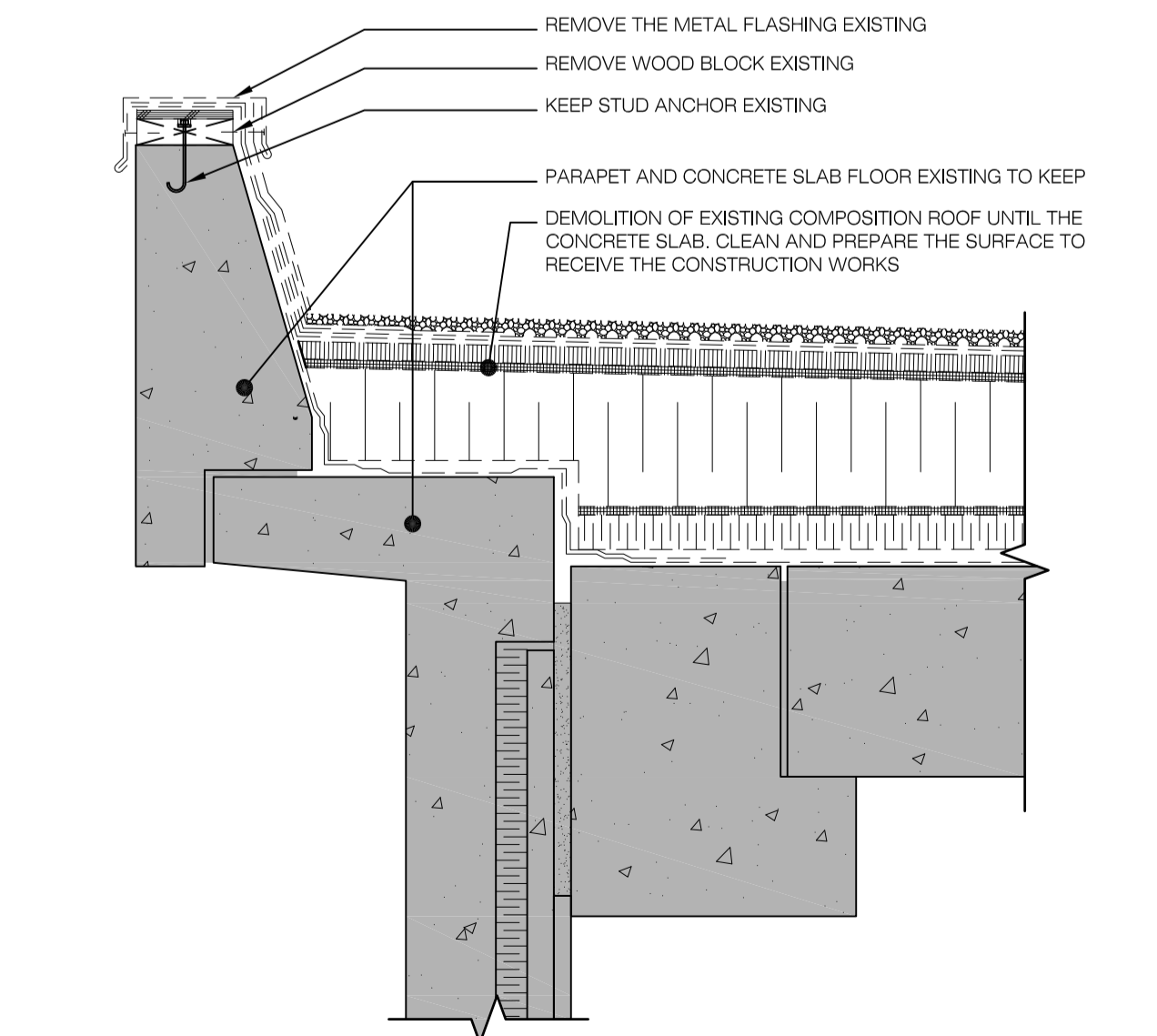
RSI VALUE AT THE DRAIN



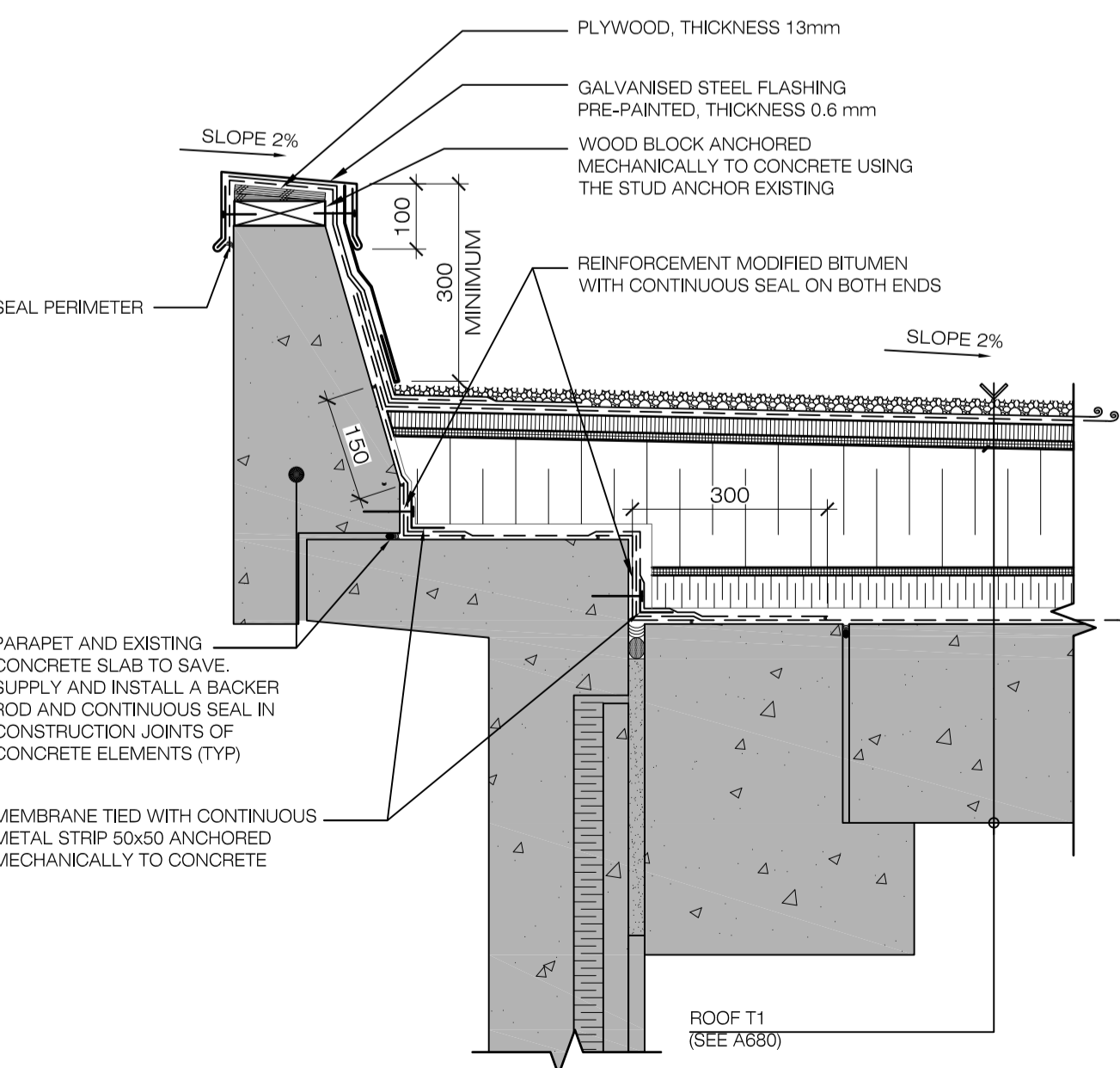
2A TYPICAL DEMOLITION DETAIL PLUMBING VENT
680 1:10



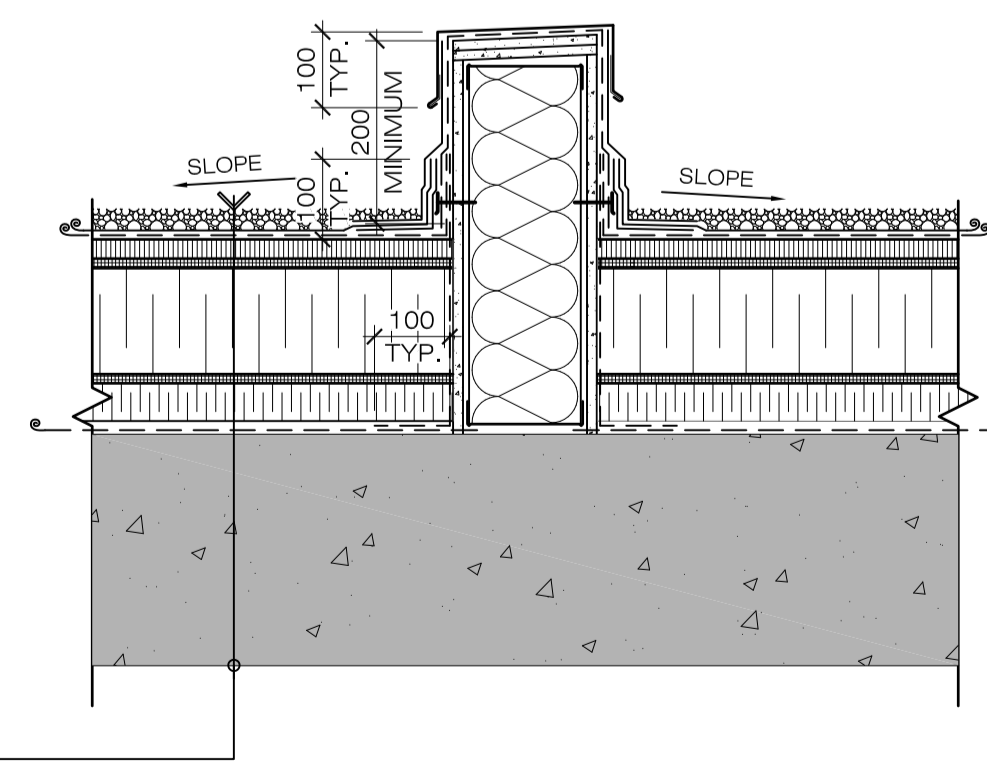
2B TYPICAL CONSTRUCTION DETAIL PLUMBING VENT
680 1:10



3A TYPICAL DEMOLITION DETAIL PARAPET BASIN
680 1:10



3B TYPICAL CONSTRUCTION DETAIL PARAPET BASIN
680 1:10



4 TYPICAL CONSTRUCTION DETAIL PARAPET BASIN SEPARATOR
680 1:10



122, rue Guilbault,
Longueuil (Québec) J4H 2T2
Tél.: (450) 463-3257
410, rue Saint-Nicolas, bureau 247
Montréal (Québec) H2Y 1Z9
Tél.: (514) 370-8673



Correctional Service Canada
Archambault Institution
Building A1
242 Montée Gagnon
Sainte-Anne-des-Plaines,
(Québec) J0N 1H0

ISSUE			
NO.	DATE	BY	DESCRIPTION
01	2015-09-24	S.A.	FOR COMMENTS
02	2016-07-11	S.A.	REQUEST FOR BIDS FOR CONSTRUCTION AS BUILT

AUDITS
APPROVED BY: _____ DATE: _____
SIGN.: _____
PREPARED BY: _____ DATE: _____
SIGN.: _____

WARNING:
CONTRACTOR SHALL VERIFY ALL DIMENSIONS AT CONSTRUCTION SITE BEFORE THE EXECUTION OF WORKS AND IMMEDIATELY NOTIFY THE ARCHITECT ABOUT ANY DIFFERENCE WITH THE DRAWINGS.

MECHANICAL ENGINEER/ ELECTRICAL ENGINEER

STRUCTURAL ENGINEER / CIVIL ENGINEER

SEAL AND SIGNATURE PROJECT OFFICER

PHASE
DETAILED PRELIMINARY DESIGN

DISCIPLINE
ARCHITECTURE

PROJECT TITLE
RENOVATION OF THE ROOF BUILDING A1

DRAWING TITLE
ROOF DETAILS

scale: INDICATED
drafted by: D.H.
project: 112411
FORMAT PRINTING: A1
2016-11-02 09:58:14

A680

COMPUTER FILE: P:\00 - PROJETS\112411 C.C. réflexion toiture A1\PLANS ET DEVIS\00_Etage couronné\00_Dessins en préparation\00plan112411_A680.dwg