

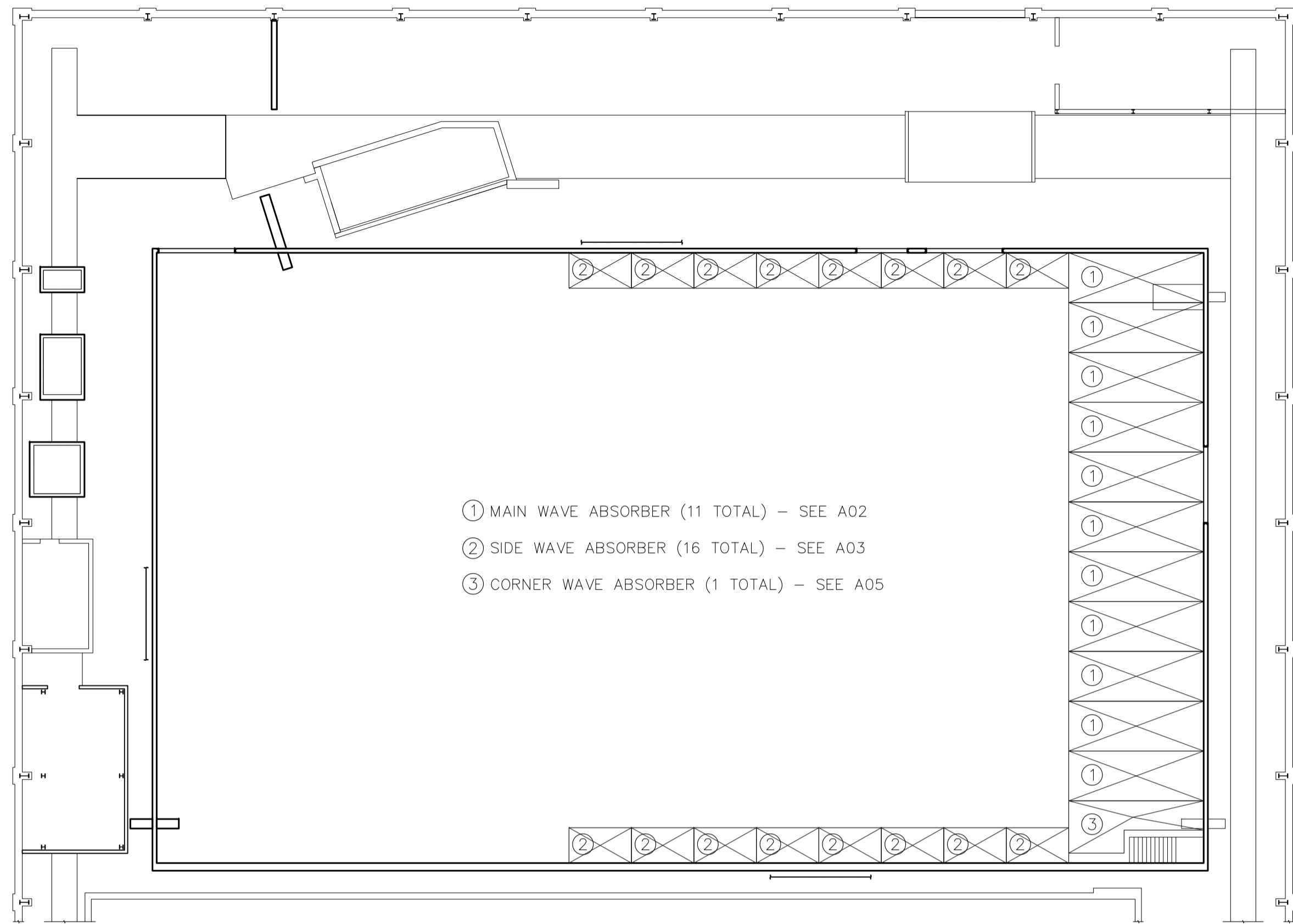
Addendum / Addenda

Project Description / Description de projet M32 Wave Absorbers		
Solicitation No./N° de sollicitation 16-22093	Project No./N° de projet 5242	W.O. No./N° d'ordre de travail A1-009278-01-03
Departmental Representative / représentant ministériel Mark O'Connor		Date November 9, 2016
Notice: This addendum shall form part of the tender documents and all conditions shall apply and be read in conjunction with the original plans and specifications.		Nota: Cet addenda fait partie intégrale des dossiers d'appel; toutes les conditions énoncées doivent être lues et appliquées en conjonction avec les plans et les devis originaux.

- 1 The submitted product line "Interclamp" - by Grainger Tubolt Limited is a suitable alternate to the Kee-Klamp line specified on the drawings.
- 2 New drawings package, attached. Updated A03 with screen specs

GENERAL NOTES

- CONTRACTORS TO CHECK AND VERIFY ALL DIMENSIONS ON SITE PRIOR TO DEMOLITION OR CONSTRUCTION AND REPORT ANY ERRORS OR OMISSIONS TO DEPARTMENTAL REPRESENTATIVE.
- CONTRACTORS MUST VISIT THE SITE & FULLY FAMILIARIZE THEMSELVES WITH THE SCOPE OF THE WORK.
- PREVENT THE SPREAD OF DUST & DEBRIS BEYOND THE WORK AREA AND CLEAN ALL SURFACES AT COMPLETION.
- MAKE GOOD ALL SURFACES AFFECTED BY THIS WORK.
- COORDINATE ALL SHUTDOWNS WITH THE DEPARTMENTAL REPRESENTATIVE.
- PROVIDE ALL LABOUR AND MATERIAL REQUIRED TO FORM A COMPLETE, FUNCTIONAL SYSTEM AS DESCRIBED ON DRAWINGS.



- ① MAIN WAVE ABSORBER (11 TOTAL) – SEE A02
- ② SIDE WAVE ABSORBER (16 TOTAL) – SEE A03
- ③ CORNER WAVE ABSORBER (1 TOTAL) – SEE A05

1 WAVE BASIN PLAN
A01

ITEM SPECIFICATIONS:

GENERAL SPECIFICATIONS:

- CONTRACTOR IS TO COMPLETE ONE "MAIN ABSORBER" UNIT, AS WELL AS ONE "SIDE ABSORBER" UNIT FOR EVALUATION OF PREPARATION TECHNIQUES AND WORKMANSHIP. CONTRACTOR IS NOT TO PROCEED WITH REMAINING WORK UNTIL WORKMANSHIP IS APPROVED BY NRC.
- COMPLETED UNITS ARE TO BE INSTALLED ON AND/OR DELIVERED TO SITE, AS DIRECTED BY NRC.
- STORE ALL MATERIALS IN ACCORDANCE WITH MANUFACTURER'S RECOMMENDATIONS, AND PROTECT FROM DAMAGE. DEFECTIVE OR DAMAGED MATERIALS ARE TO BE REPLACED WITH NEW.
- GALVANIZED COATING: CLEAN DAMAGED SURFACES WITH WIRE BRUSH REMOVING LOOSE AND CRACKED COATINGS. APPLY TWO COATS OF ORGANIC ZINC-RICH PAINT TO DAMAGED AREAS. PRE-TREAT DAMAGED SURFACES ACCORDING TO MANUFACTURERS' INSTRUCTIONS FOR ZINC-RICH PAINT.
- FINAL CLEANING: UPON COMPLETION REMOVE SURPLUS MATERIALS, RUBBISH, TOOLS AND EQUIPMENT.

PIPING:

- GALVANIZED ERW STEEL PIPE. 1" STANDARD, .133 WALL THICKNESS.
- THREADED & COUPLED ENDS.
- A53 GRADE B.
- OUTSIDE DIAMETER: 1.315" (33.4mm).
- ASSEMBLE ALL ABSORBERS SO THAT FULL LENGTH PIPES ARE USED IN THE DIRECTION PERPENDICULAR TO THE EXPANDED METAL SCREENS, TO ENSURE RIGIDITY ACROSS THE COMPLETED MODULE.
- ALL END CUTS ARE TO BE GROUND SMOOTH (BURRS, SHARP EDGES REMOVED), PRIOR TO INSTALLATION OF JOINT CLAMPS.

JOINT CLAMPS:

- ALL JOINT CLAMPS ARE TO BE GALVANIZED STEEL.
- ALL JOINT CLAMPS ARE TO ACCOMMODATE 1.315" OUTSIDE DIAMETER PIPES (SEE PIPING SPECS ABOVE).
- SCREWS ARE TO BE CASE HARDENED STEEL, WITH CORROSION RESISTANT COATING.
- SCREWS ARE TO BE TIGHTENED TO A TORQUE OF 29 LBS/FT.
- ALL JOINT CLAMPS MUST MEET ASTM A47-77-32510, BS EN ISO 1461.
- STANDARD OF ACCEPTANCE: "KEE KLAMP" BY KEE SAFETY, INC. ADDRESS: 40 NORTH RIVERMEDE, UNITS 6-7 CONCORD, ONTARIO L4K 2H3. WWW.KEE SAFETY.CA
- SEE DRAWING A04 FOR JOINT CLAMP MODELS AND DETAILS.
- JOINT CLAMP "45-6" IS INTENDED TO ANCHOR UNITS TOGETHER ONCE IN PLACE. AS SUCH, THESE JOINT CLAMPS ARE TO BE INSTALLED "LOOSE".
- JOINT CLAMPS "68-6" ARE TO BE ANCHORED TO THE TOP EDGE OF THE EXISTING WAVE BASIN CONCRETE WALL, IN LINE WITH "WALL ANCHOR RAILS" ON MAIN & CORNER WAVE ABSORBERS. ANCHOR USING TAPCON CONCRETE ANCHORS.

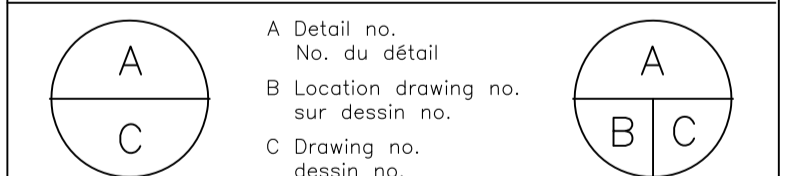
EXPANDED METAL SCREENS:

- "EXPANDED METAL SCREENS" (NOTED ON POST & SCREEN ASSEMBLY PLANS AS "G-16-XX" OR "1-18-XX") ARE CUSTOM FABRICATED WAVE-DISPERSION SCREENS, MANUFACTURED BY AMICO CANADA, INC. ADDRESS: 1080 CORPORATE DRIVE, BURLINGTON, ONTARIO L7L 5R6.
- DUE TO THE SCIENTIFIC USE OF THESE SCREENS TO PRODUCE KNOWN, MEASURED, AND TESTED RESULTS, ALTERNATE PRODUCTS/MATERIALS/MANUFACTURERS WILL NOT BE ACCEPTED.
- SCREEN TYPE & SIZE IS NOTED ON POST & SCREEN ASSEMBLY PLANS (3/A02, 3/A03, 2/A05).
- ALL SCREENS ARE TO BE HOT DIP GALVANIZED.
- SCREENS ARE TO BE STRETCHED TIGHTLY TO TENSION RECOMMENDED BY MANUFACTURER AND FASTENED TO EVERY ADJACENT VERTICAL PIPE (POST) USING 9 GAUGE GALVANIZED STEEL TIE WIRES AT 200MM (8") O/C ALONG ENTIRE POST.
- TIE WIRES ARE TO HAVE A MINIMUM OF THREE TWISTS.

No.	Date	Revision	By: / Par:
0	OCT. 2016	ISSUED FOR TENDER	BL

Date Printed: _____ Date imprimée: _____

- Verify all dimensions and site conditions and be responsible for same
- Vérifier toutes les dimensions et l'état des lieux et en assumer la responsabilité



project M-32 OCRE WAVE ABSORBERS projet

MONTREAL ROAD CAMPUS

BASIN PLAN & SPECIFICATIONS

designed BL conçu date OCT. 2016 date

drawn BL dessiné scale AS NOTED échelle

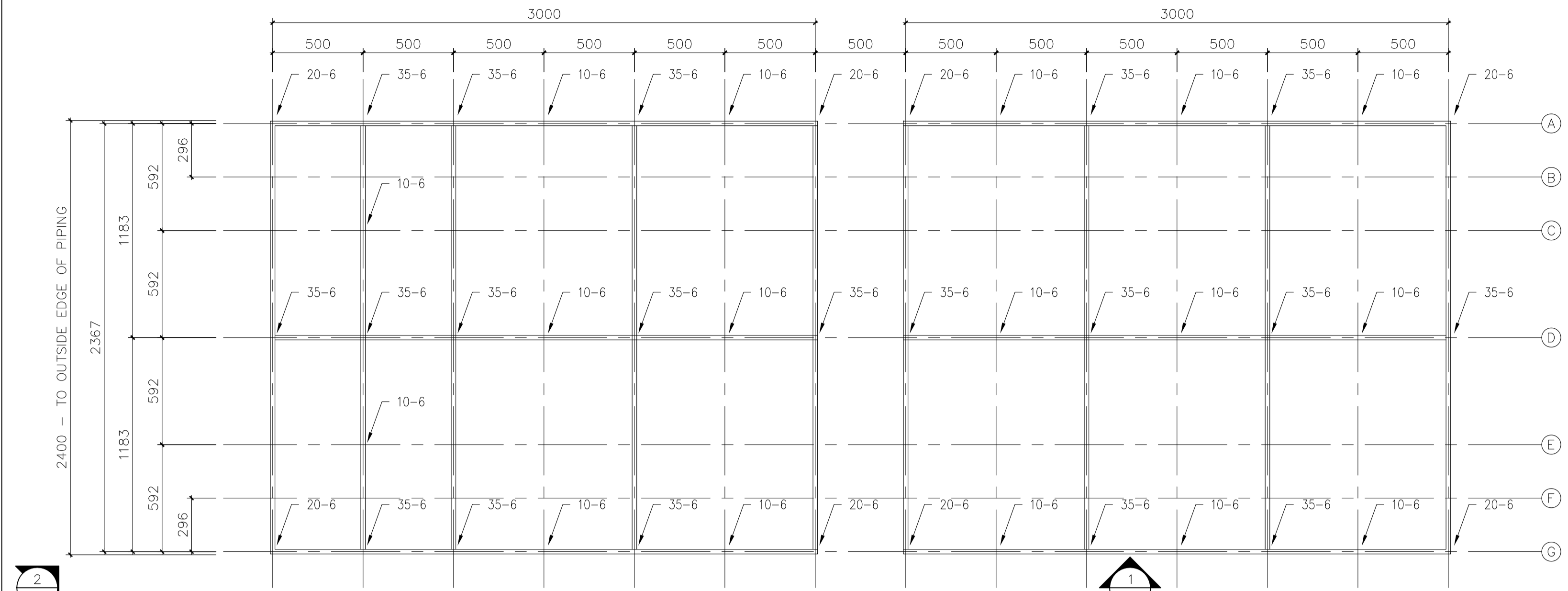
checked IDT vérifié sheet 1 of/de 5 feuille

approved IDT approuvé W.O.no. D.T.no.

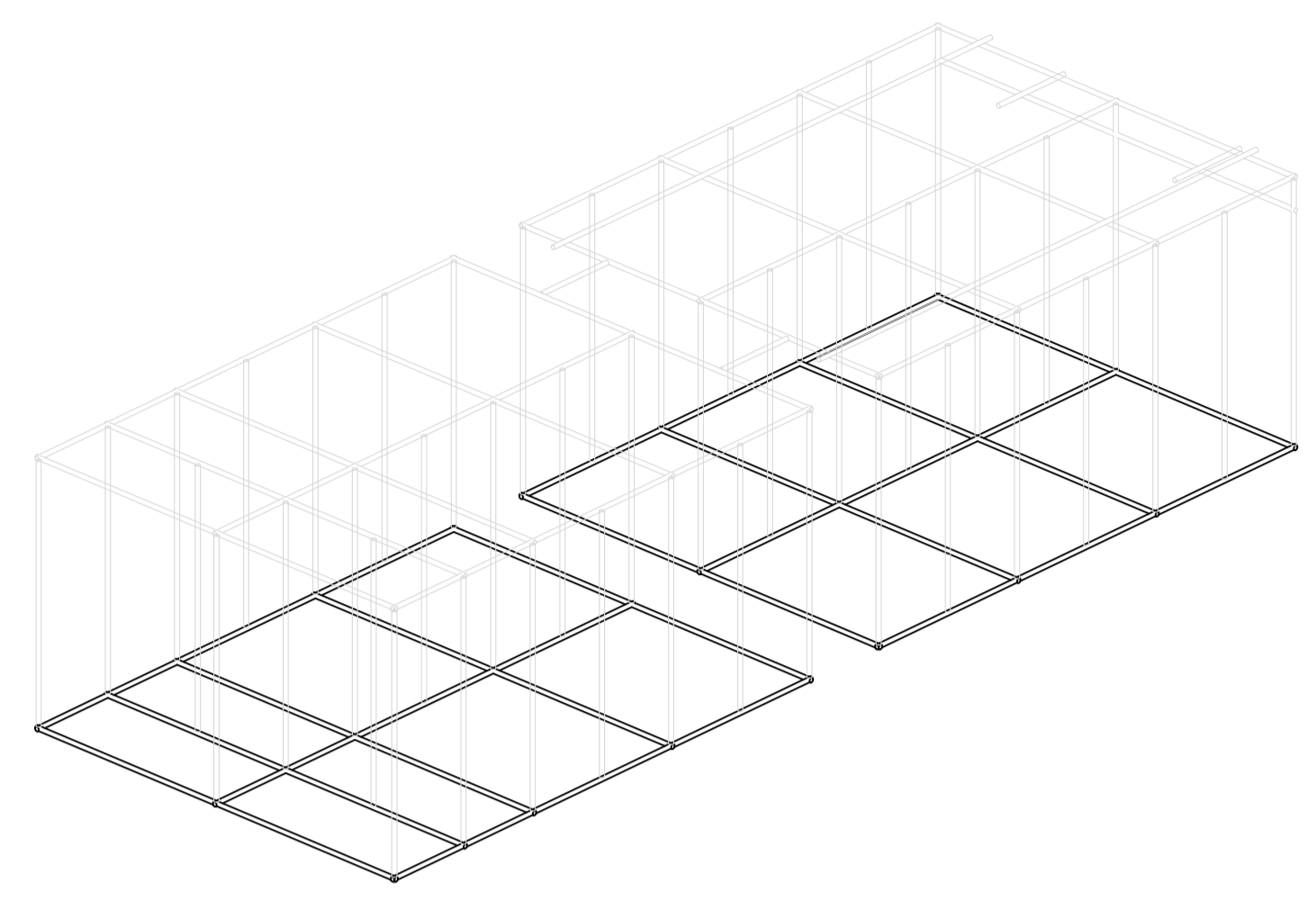
dwg.no. 5242-A01 dessin no.

GENERAL NOTES

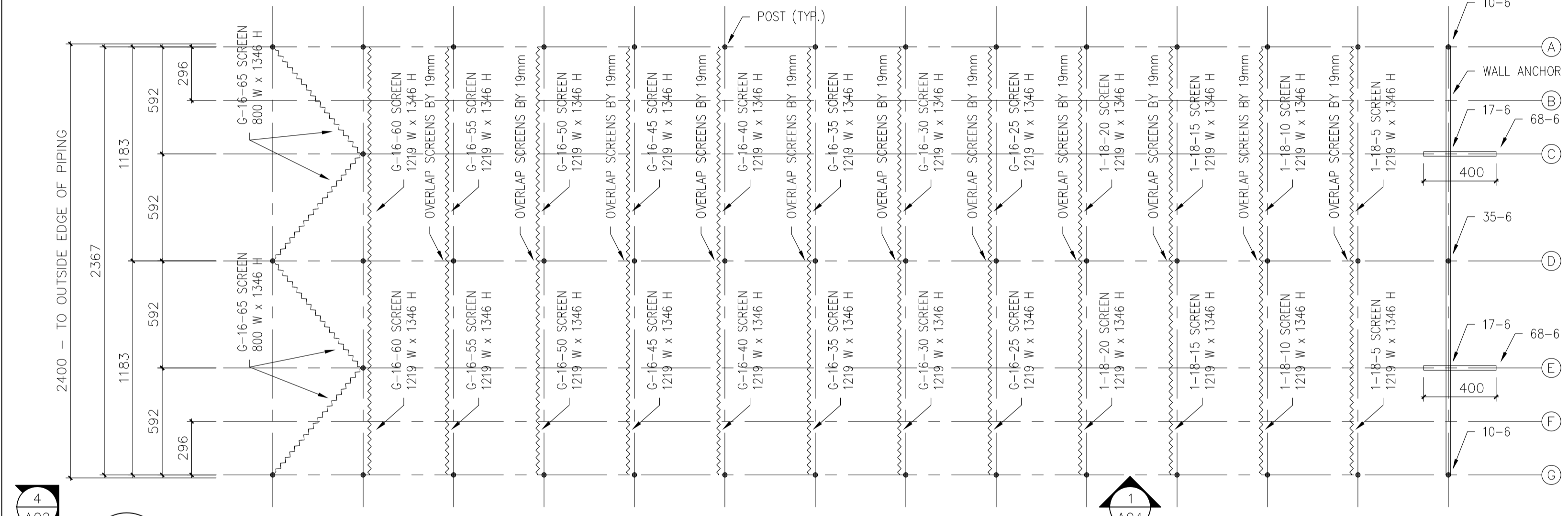
- CONTRACTORS TO CHECK AND VERIFY ALL DIMENSIONS ON SITE PRIOR TO DEMOLITION OR CONSTRUCTION AND REPORT ANY ERRORS OR OMISSIONS TO DEPARTMENTAL REPRESENTATIVE.
- CONTRACTORS MUST VISIT THE SITE & FULLY FAMILIARIZE THEMSELVES WITH THE SCOPE OF THE WORK.
- PREVENT THE SPREAD OF DUST & DEBRIS BEYOND THE WORK AREA AND CLEAN ALL SURFACES AT COMPLETION.
- MAKE GOOD ALL SURFACES AFFECTED BY THIS WORK.
- COORDINATE ALL SHUTDOWNS WITH THE DEPARTMENTAL REPRESENTATIVE.
- PROVIDE ALL LABOUR AND MATERIAL REQUIRED TO FORM A COMPLETE, FUNCTIONAL SYSTEM AS DESCRIBED ON DRAWINGS.



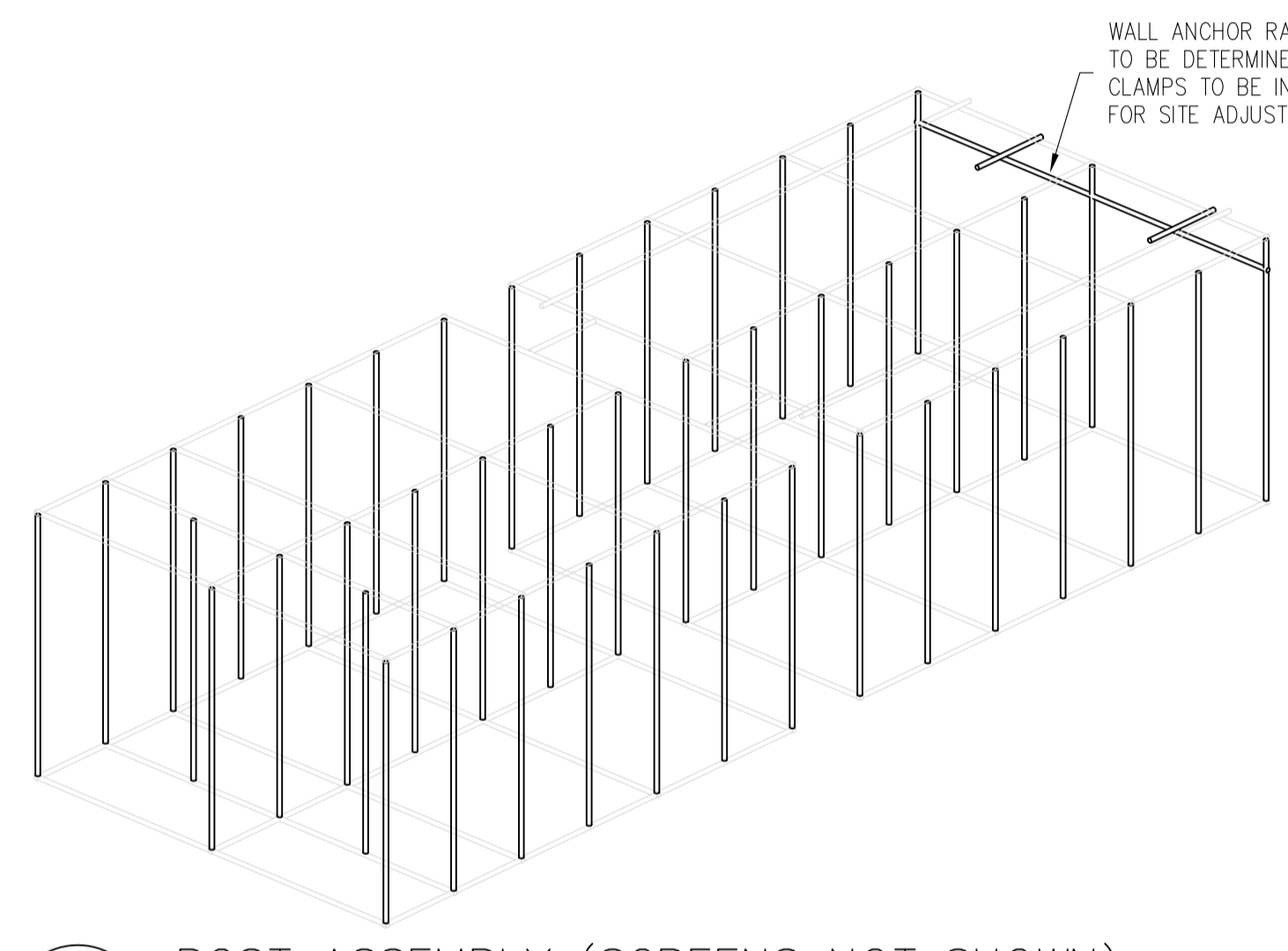
1 MAIN WAVE ABSORBER – PLAN VIEW – BASE ASSEMBLY
 SCALE = 1:20



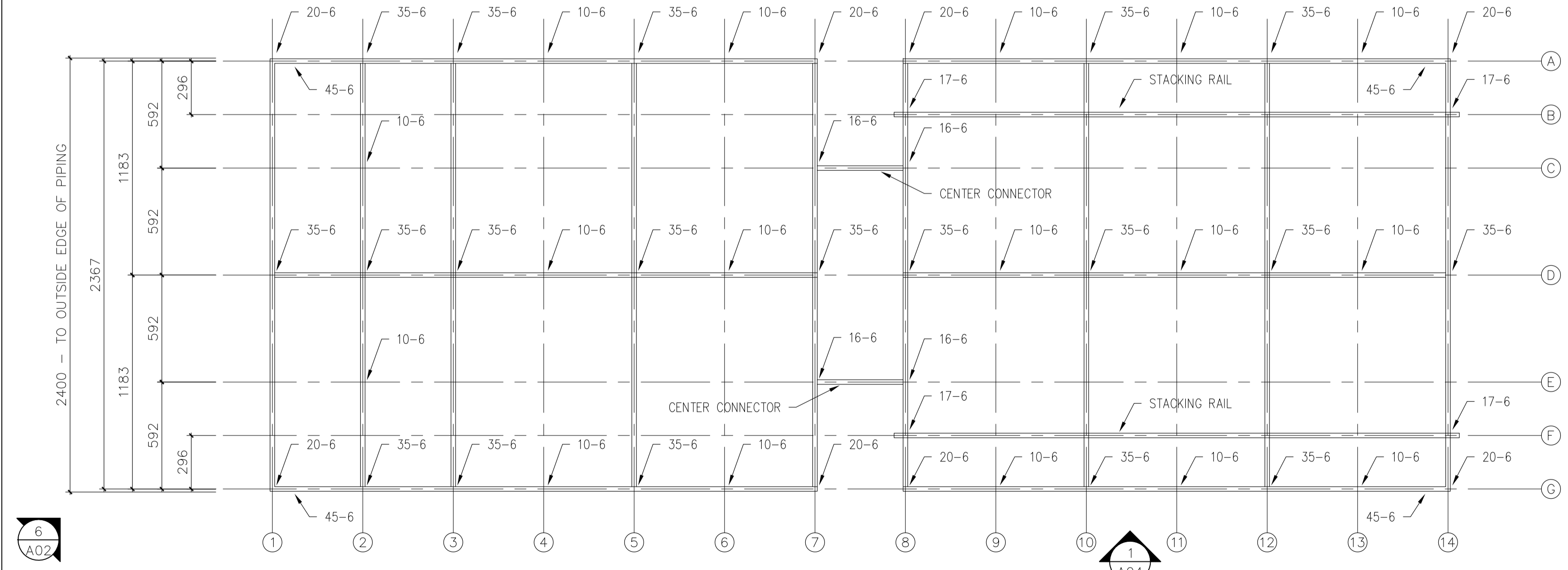
2 BASE ASSEMBLY
 N.T.S.



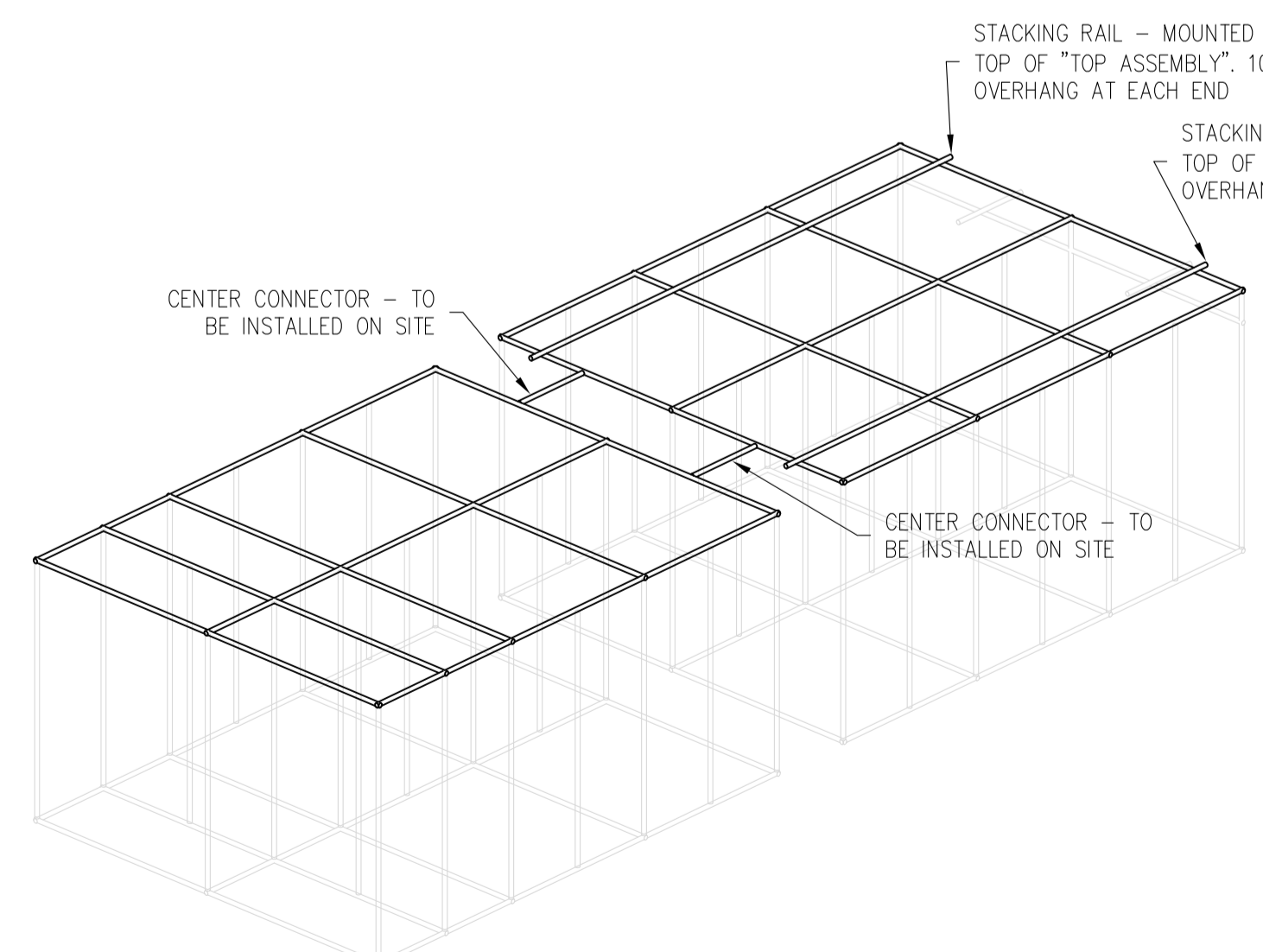
3 MAIN WAVE ABSORBER – PLAN VIEW – POST & SCREEN ASSEMBLY
 SCALE = 1:20



4 POST ASSEMBLY (SCREENS NOT SHOWN)
 N.T.S.



5 MAIN WAVE ABSORBER – PLAN VIEW – TOP ASSEMBLY
 SCALE = 1:20



6 TOP ASSEMBLY
 N.T.S.

0	OCT. 2016	ISSUED FOR TENDER	BL
No.	Date	Revision	By: / Par:
Date Printed DD MM YYYY		Date imprimée	

- Verify all dimensions and site conditions and be responsible for same
- Vérifier toutes les dimensions et l'état des lieux et en assumer la responsabilité

A	A Detail no. No. du détail	A
C	B Location drawing no. sur dessin no.	B
	C Drawing no. dessin no.	C

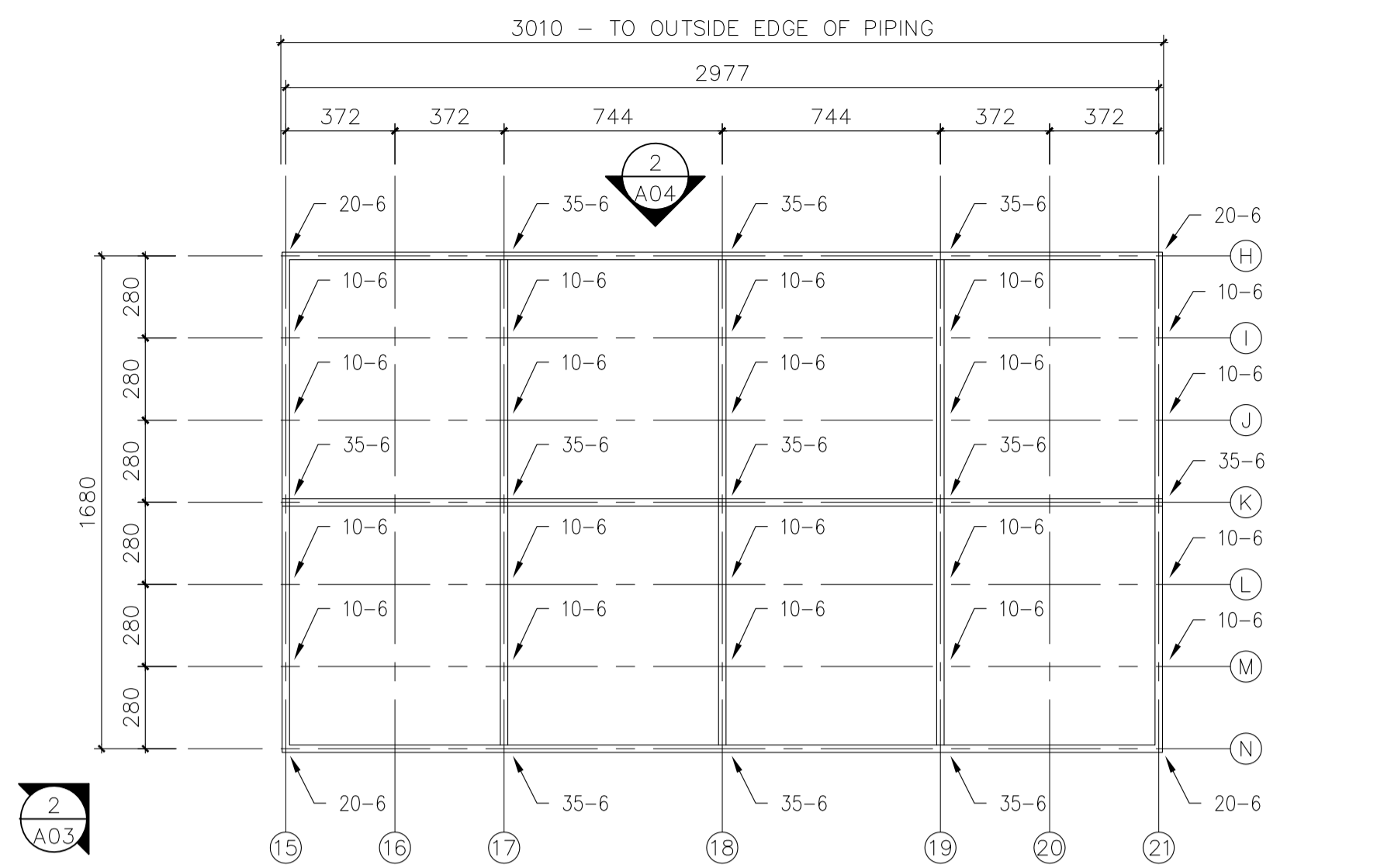
project **M-32**
OCRE WAVE ABSORBERS
 MONTREAL ROAD CAMPUS
 drawing **MAIN ABSORBER**

designed	BL	conçu	date	OCT. 2016	date
drawn	BL	dessiné	scale	AS NOTED	échelle
checked	IDT	vérifié	sheet	2 of/de	5 feuille
approved	IDT	approuvé	W.O.no.		D.T.no.

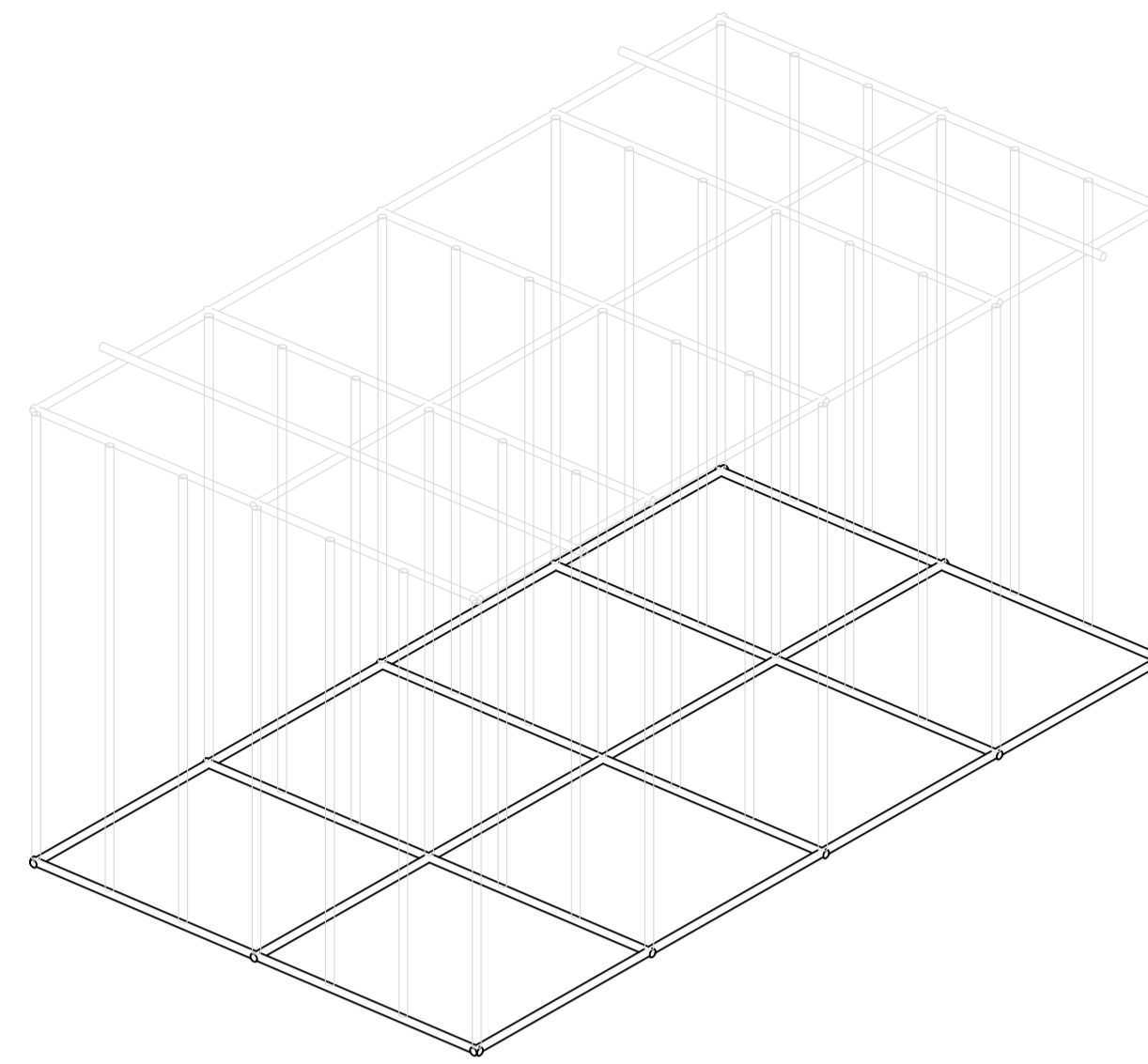
dwg.no. **5242-A02** dessin no.

GENERAL NOTES

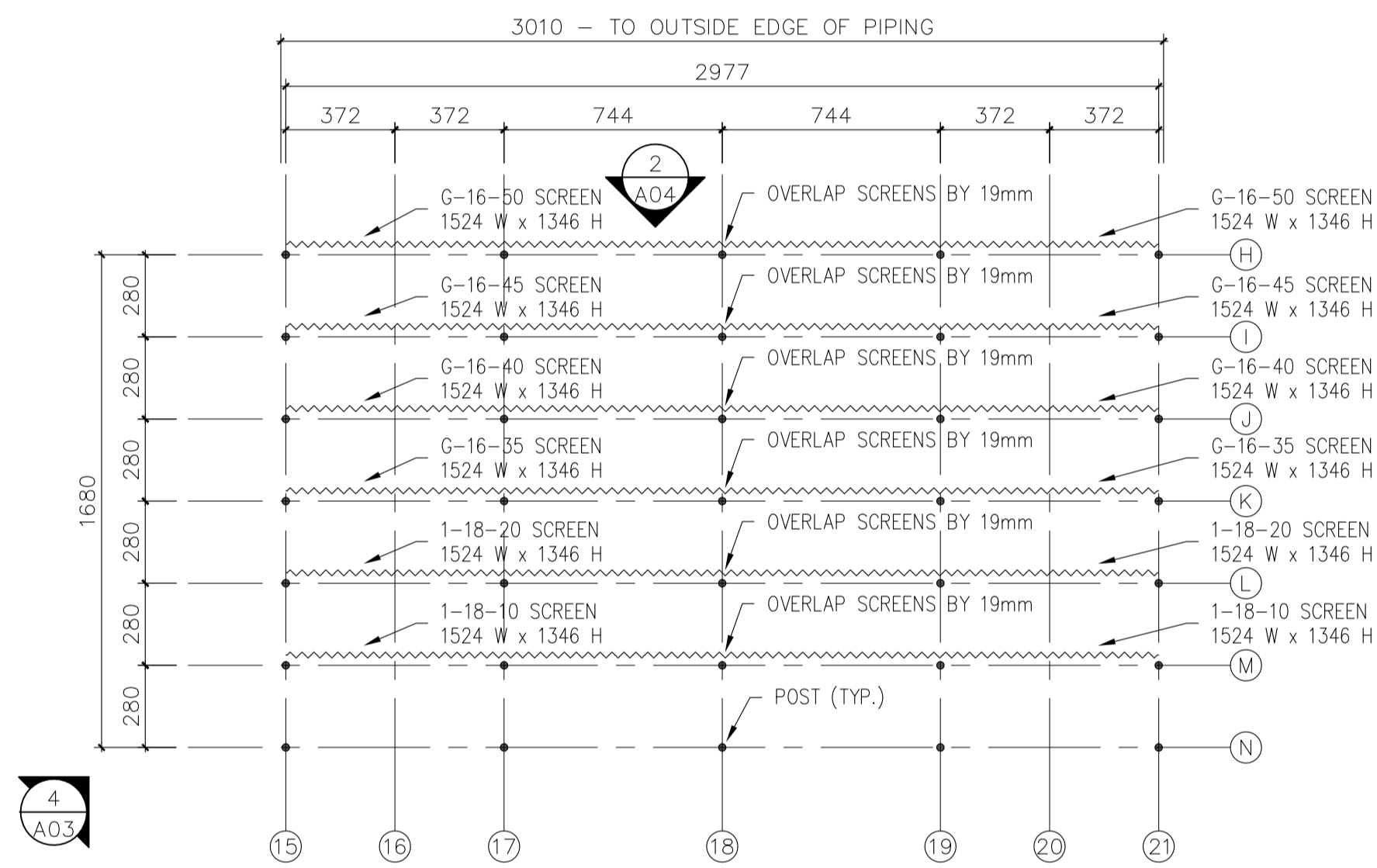
- CONTRACTORS TO CHECK AND VERIFY ALL DIMENSIONS ON SITE PRIOR TO DEMOLITION OR CONSTRUCTION AND REPORT ANY ERRORS OR OMISSIONS TO DEPARTMENTAL REPRESENTATIVE.
- CONTRACTORS MUST VISIT THE SITE & FULLY FAMILIARIZE THEMSELVES WITH THE SCOPE OF THE WORK.
- PREVENT THE SPREAD OF DUST & DEBRIS BEYOND THE WORK AREA AND CLEAN ALL SURFACES AT COMPLETION.
- MAKE GOOD ALL SURFACES AFFECTED BY THIS WORK.
- COORDINATE ALL SHUTDOWNS WITH THE DEPARTMENTAL REPRESENTATIVE.
- PROVIDE ALL LABOUR AND MATERIAL REQUIRED TO FORM A COMPLETE, FUNCTIONAL SYSTEM AS DESCRIBED ON DRAWINGS.



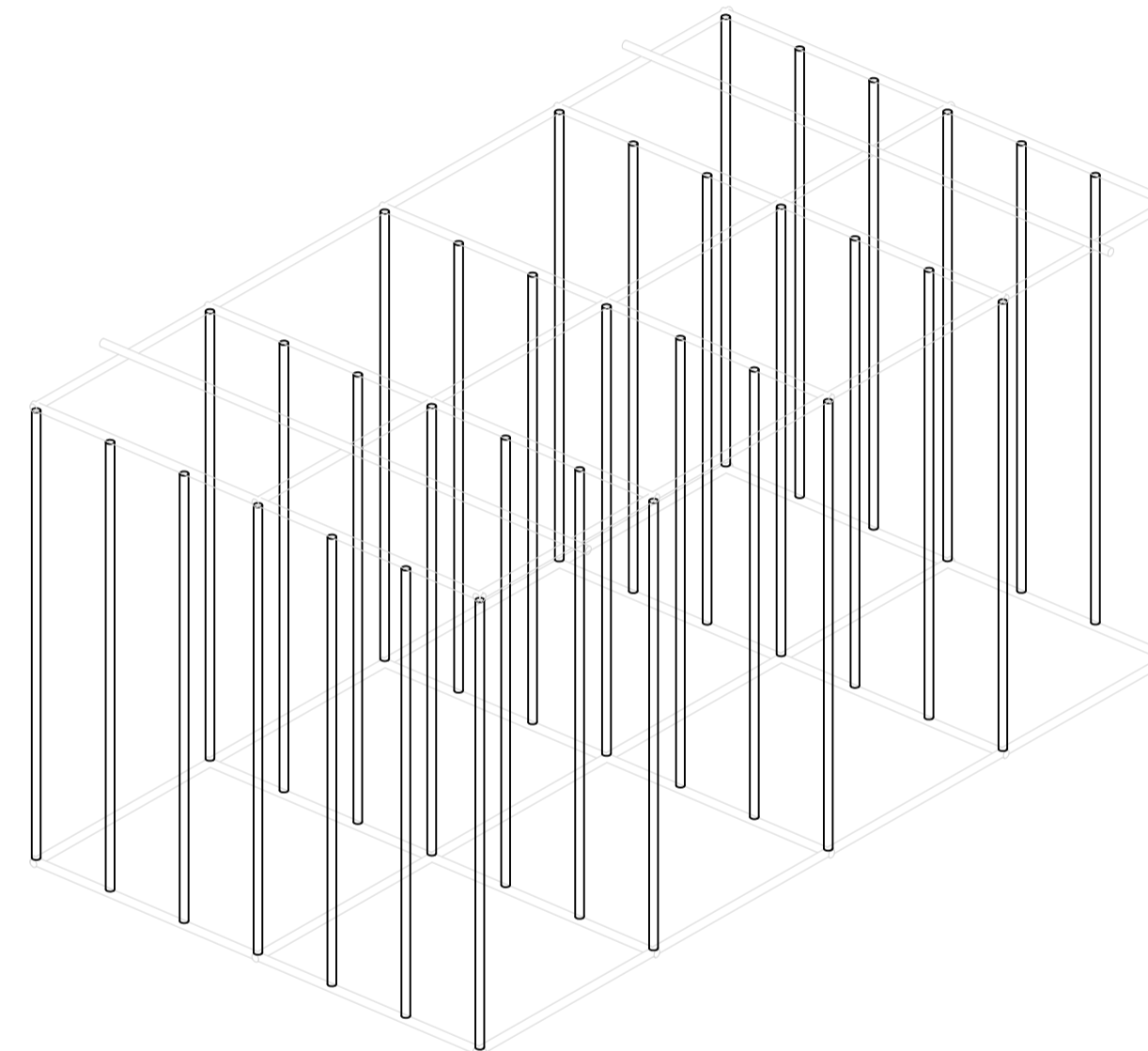
1 SIDE WAVE ABSORBER – PLAN VIEW – BASE ASSEMBLY
 A03 SCALE = 1:20



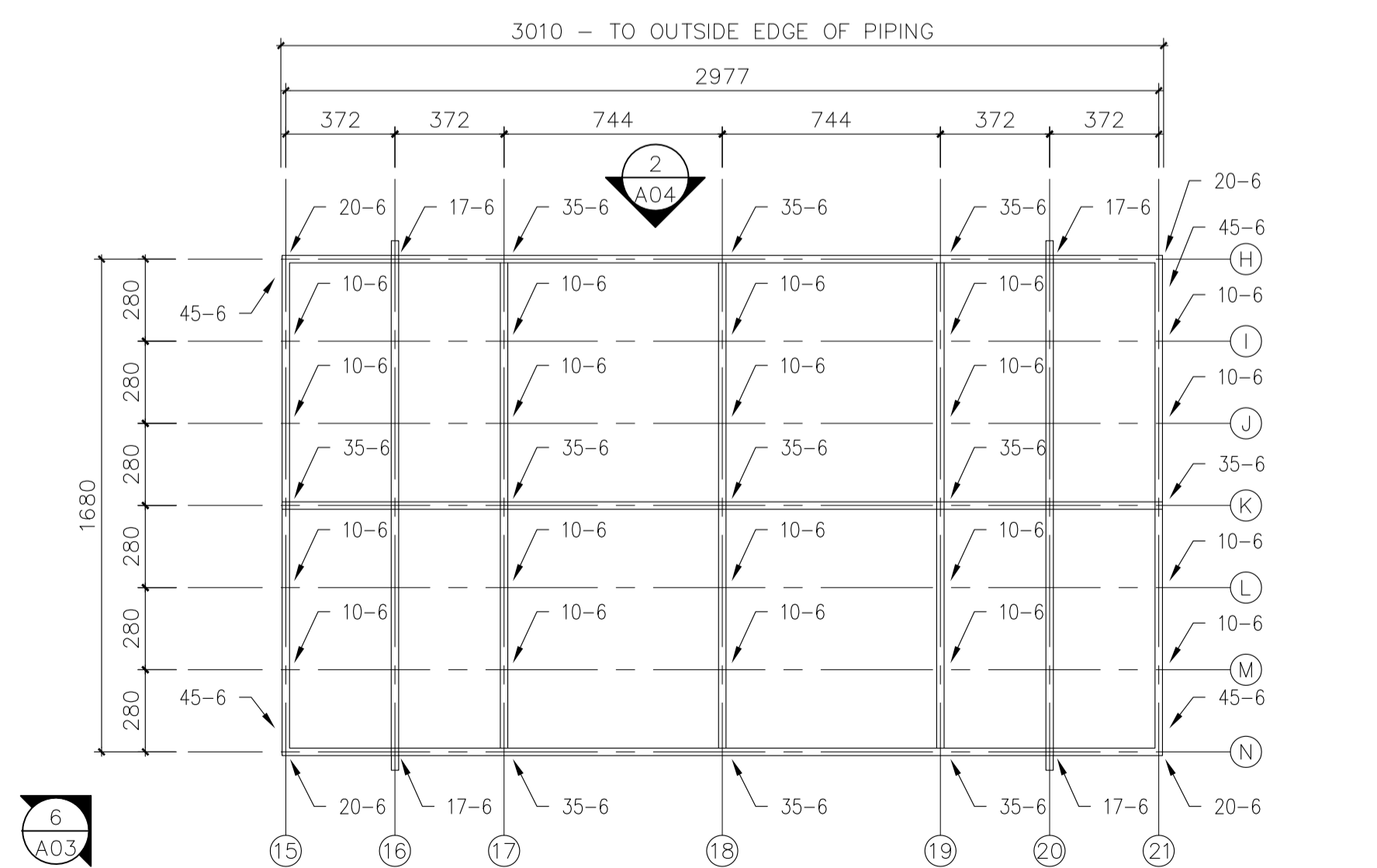
2 BASE ASSEMBLY
 A03 N.T.S.



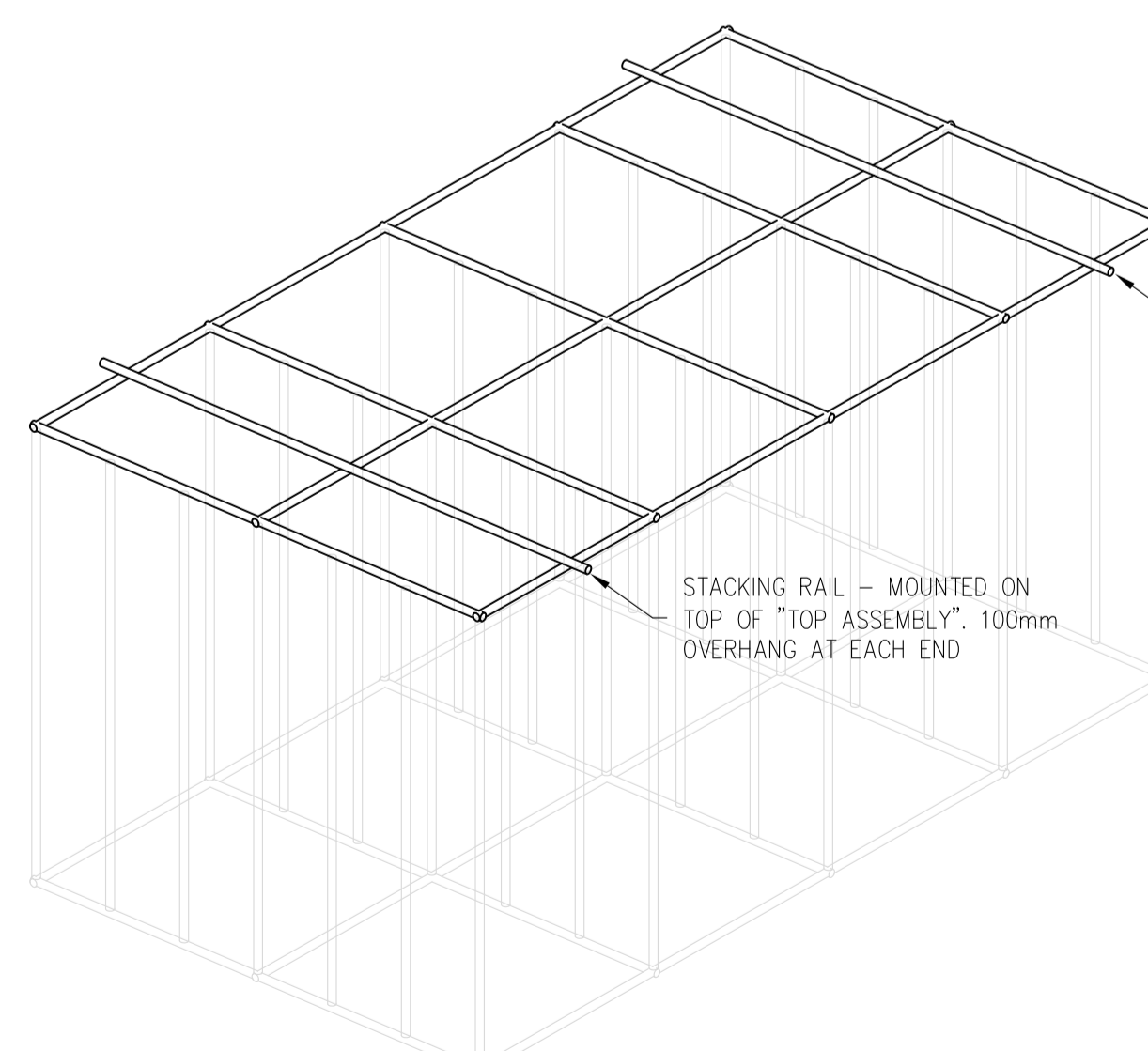
3 SIDE WAVE ABSORBER – PLAN VIEW – POST & SCREEN ASSEMBLY
 A03 SCALE = 1:20



4 POST ASSEMBLY (SCREENS NOT SHOWN)
 A03 N.T.S.



5 SIDE WAVE ABSORBER – PLAN VIEW – TOP ASSEMBLY
 A03 SCALE = 1:20



6 TOP ASSEMBLY
 A03 N.T.S.

No.	Date	Revision	By: Par.
0	OCT. 2016	ISSUED FOR TENDER	BL

Date Printed 00 MM YYYY Date imprimée

- o Verify all dimensions and site conditions and be responsible for same
- o Vérifier toutes les dimensions et l'état des lieux et en assumer la responsabilité

A	A Detail no. No. du détail	A
C	B Location drawing no. sur dessin no.	B
	C Drawing no. dessin no.	C

project **M-32**
OCRE WAVE ABSORBERS

MONTREAL ROAD CAMPUS

drawing **SIDE ABSORBER**

designed **BL** conçu **OCT. 2016** date

drawn **BL** dessiné **AS NOTED** échelle

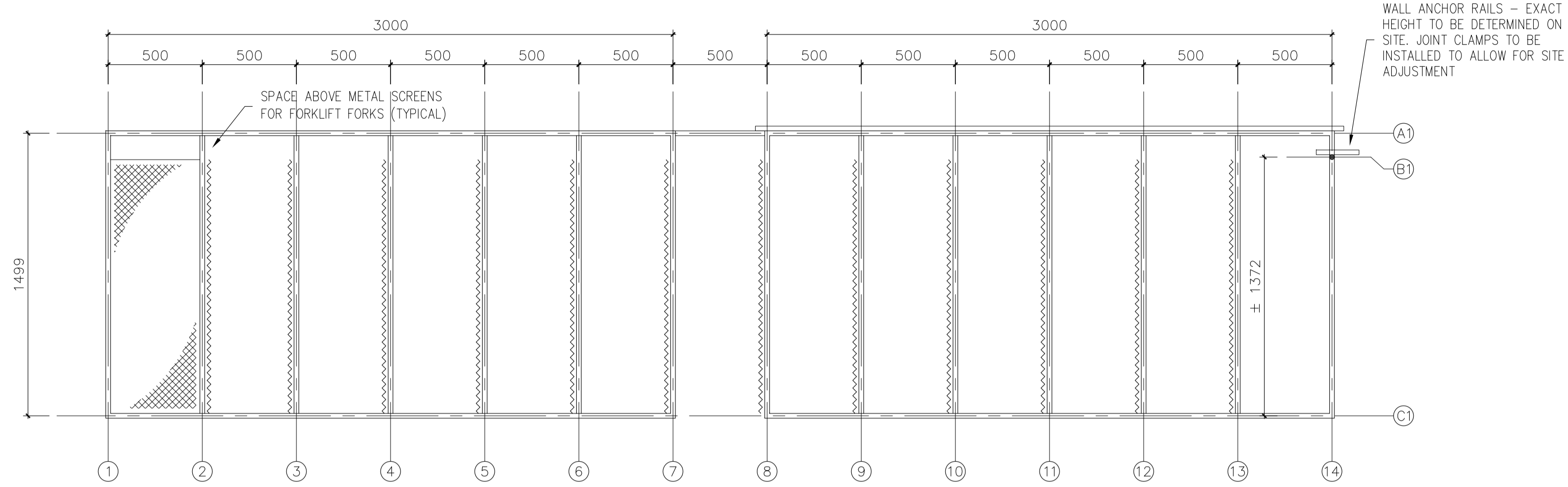
checked **IDT** vérifié **3** of/de **5** feuille

approved **IDT** approuvé W.O.no. D.T.no.

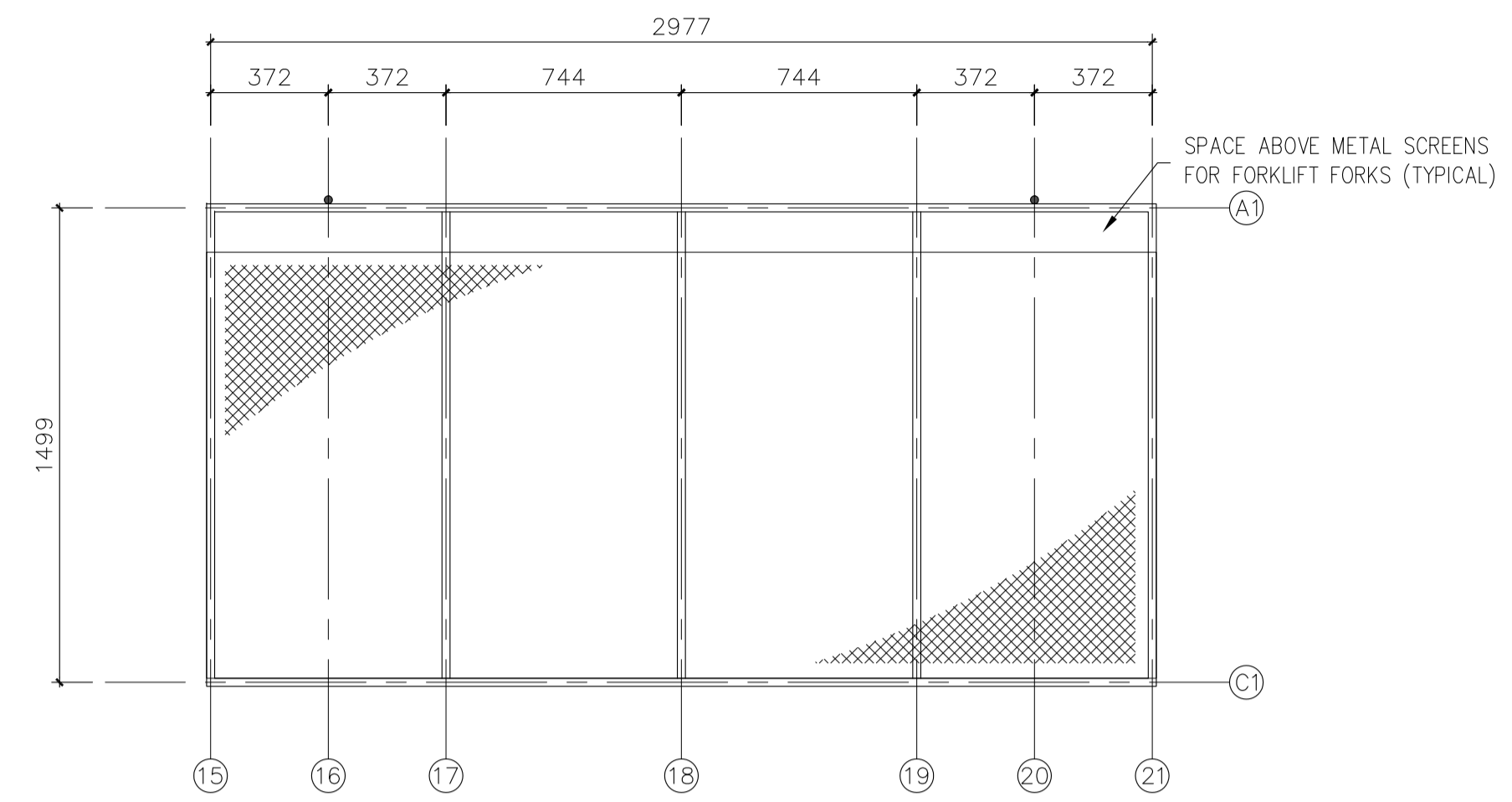
dwg.no. **5242-A03** dessin no.

GENERAL NOTES

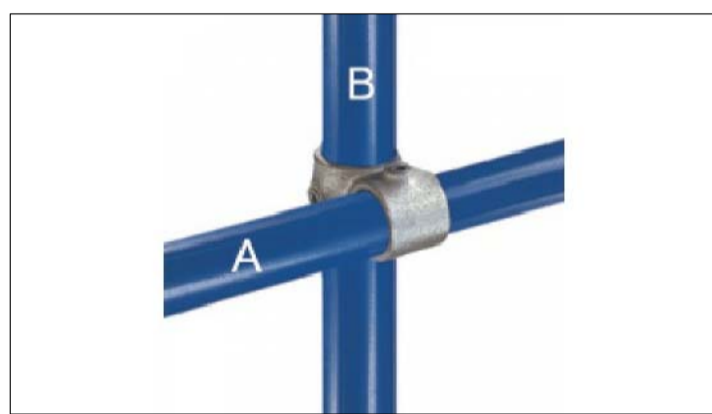
- CONTRACTORS TO CHECK AND VERIFY ALL DIMENSIONS ON SITE PRIOR TO DEMOLITION OR CONSTRUCTION AND REPORT ANY ERRORS OR OMISSIONS TO DEPARTMENTAL REPRESENTATIVE.
- CONTRACTORS MUST VISIT THE SITE & FULLY FAMILIARIZE THEMSELVES WITH THE SCOPE OF THE WORK.
- PREVENT THE SPREAD OF DUST & DEBRIS BEYOND THE WORK AREA AND CLEAN ALL SURFACES AT COMPLETION.
- MAKE GOOD ALL SURFACES AFFECTED BY THIS WORK.
- COORDINATE ALL SHUTDOWNS WITH THE DEPARTMENTAL REPRESENTATIVE.
- PROVIDE ALL LABOUR AND MATERIAL REQUIRED TO FORM A COMPLETE, FUNCTIONAL SYSTEM AS DESCRIBED ON DRAWINGS.



1 MAIN WAVE ABSORBER – SIDE ELEVATION
 A04 SCALE = 1:20



2 SIDE WAVE ABSORBER – FRONT ELEVATION
 A04 SCALE = 1:20



3 45-6
 A04



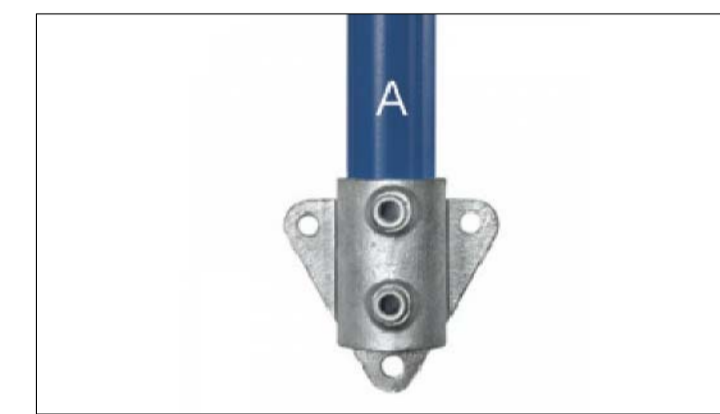
4 17-6
 A04



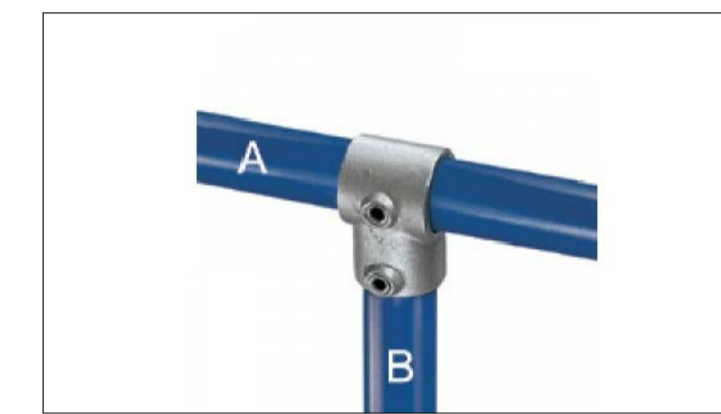
5 20-6
 A04



6 35-6
 A04



7 68-6
 A04



8 10-6
 A04

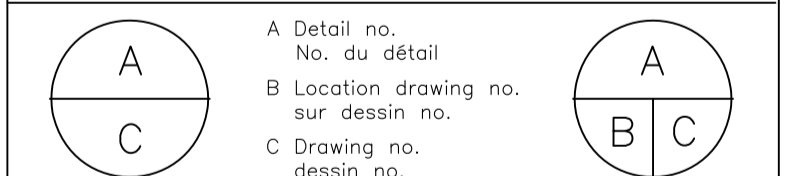


9 16-6
 A04

No.	Date	Revision	By: Par.
0	OCT. 2016	ISSUED FOR TENDER	BL

Date Printed DD MM YYYY Date imprimée

- o Verify all dimensions and site conditions and be responsible for same
- o Vérifier toutes les dimensions et l'état des lieux et en assumer la responsabilité



project **M-32** projet
OCRE WAVE ABSORBERS

MONTREAL ROAD CAMPUS

drawing **ELEVATIONS & CLAMP DETAILS** dessin

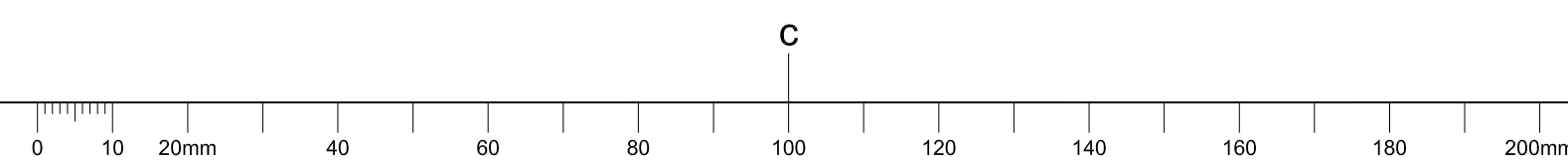
designed **BL** conçu **OCT. 2016** date

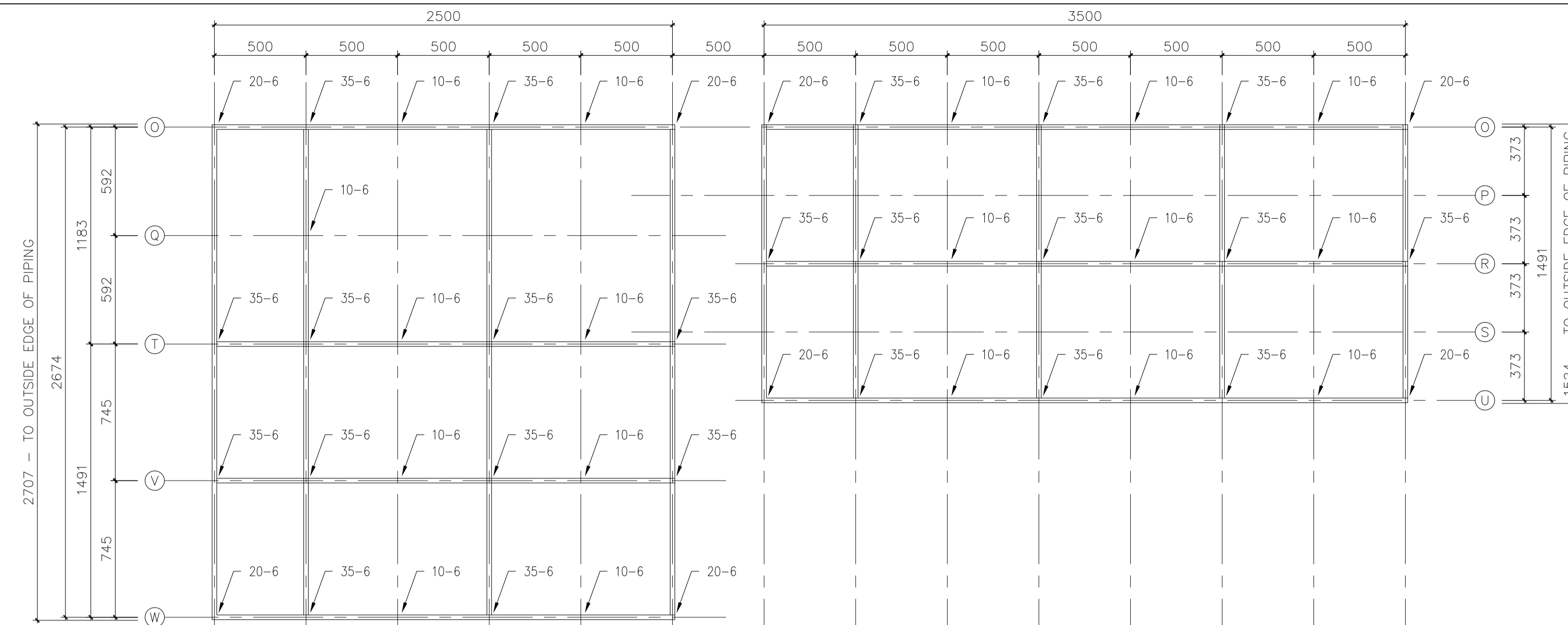
drawn **BL** dessiné **AS NOTED** scale échelle

checked **IDT** vérifié **4** of/de **5** sheet/feuille

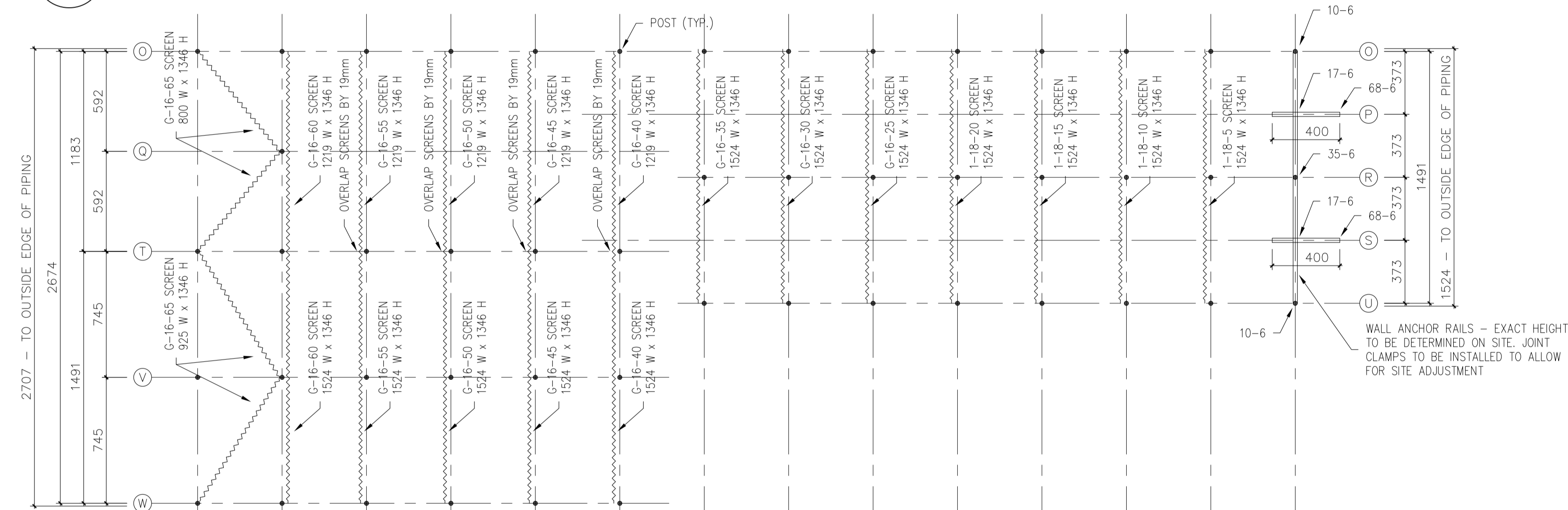
approved **IDT** approuvé W.O.no. D.T.no.

dwg.no. **5242-A04** dessin no.

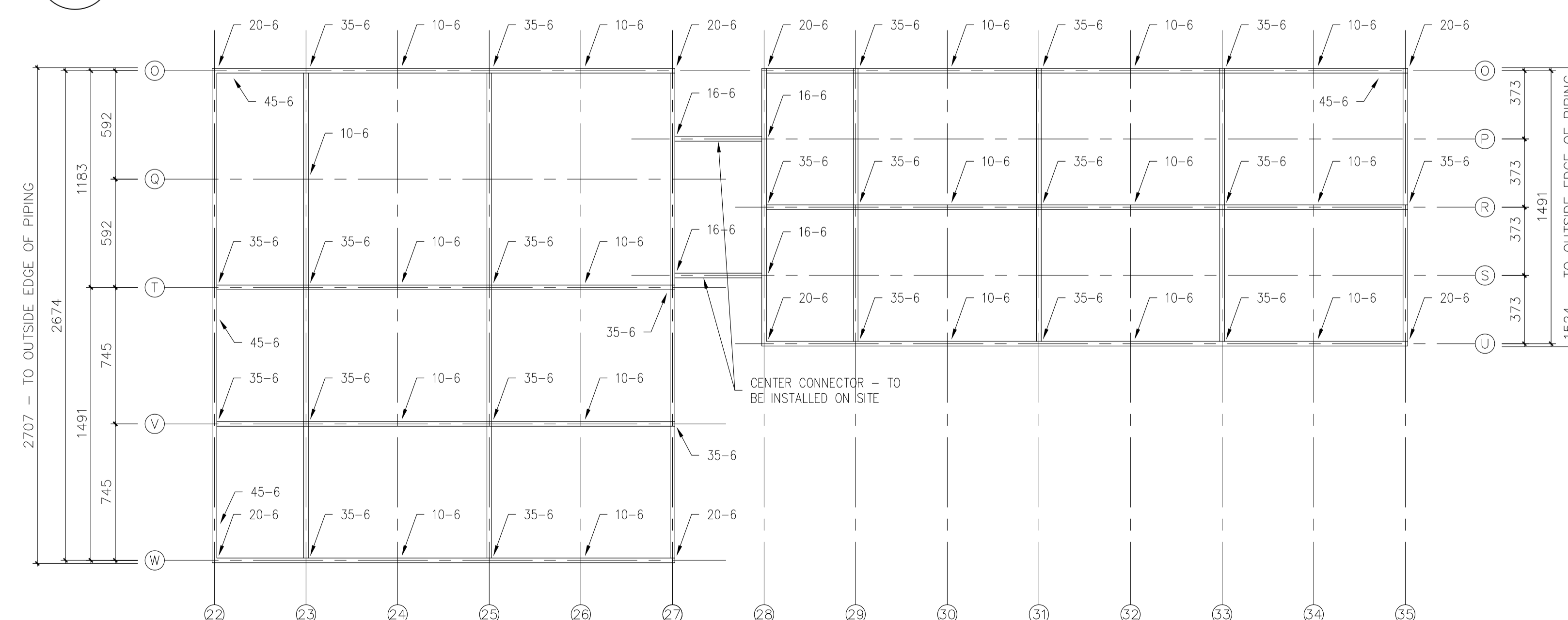




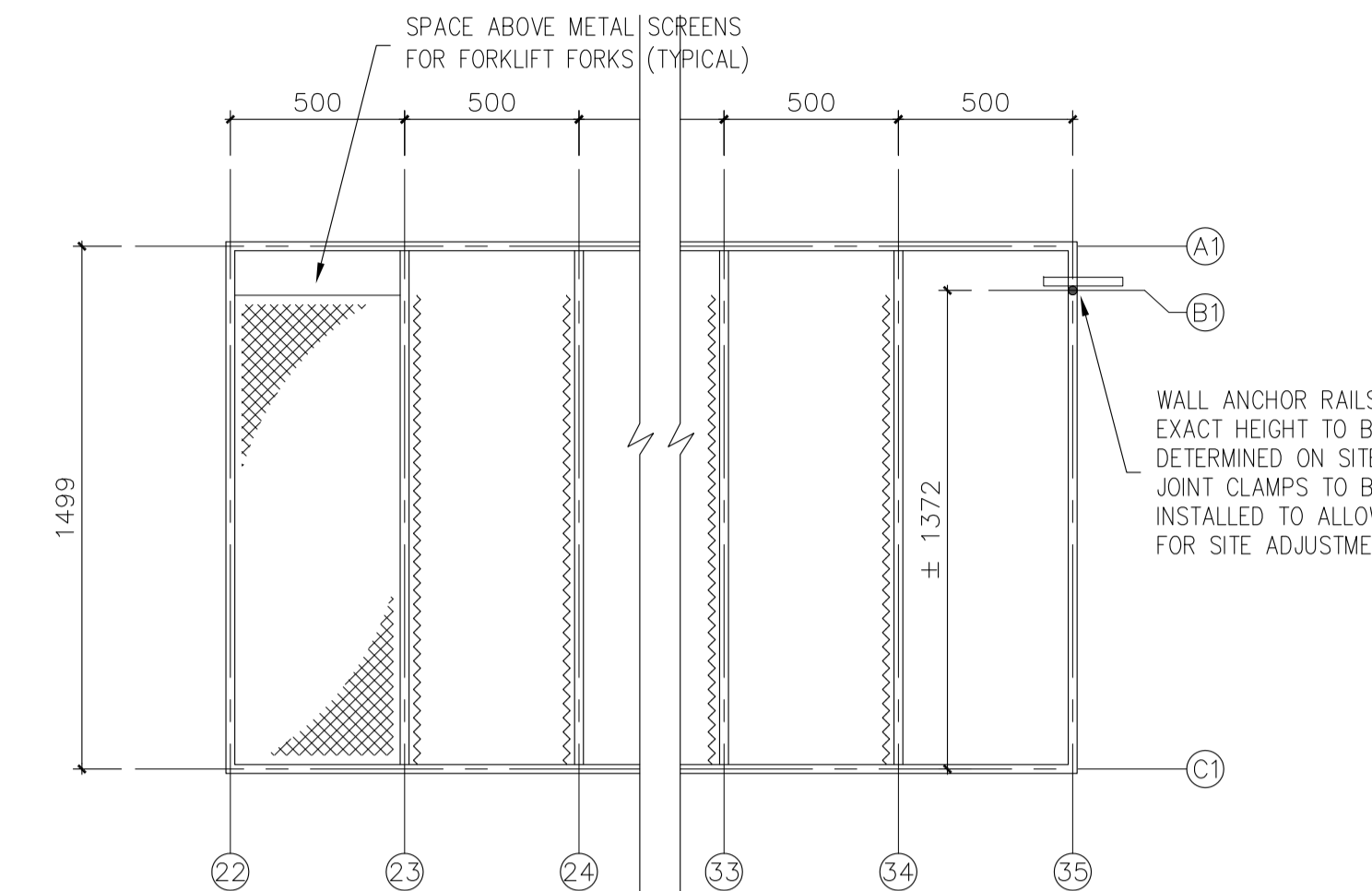
1 CORNER WAVE ABSORBER – PLAN VIEW – BASE ASSEMBLY
 A05 SCALE = 1:20



2 CORNER WAVE ABSORBER – PLAN VIEW – POST & SCREEN ASSEMBLY
 A05 SCALE = 1:20



3 CORNER WAVE ABSORBER – PLAN VIEW – TOP ASSEMBLY
 A05 SCALE = 1:20



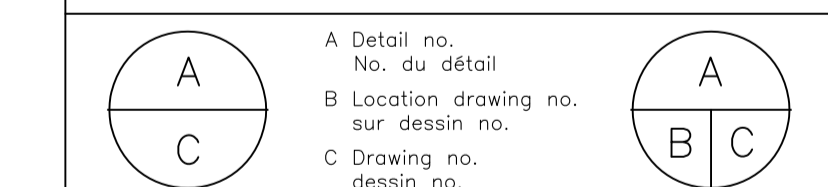
4 CORNER WAVE ABSORBER – SIDE ELEVATION
 A05 SCALE = 1:20

GENERAL NOTES

- CONTRACTORS TO CHECK AND VERIFY ALL DIMENSIONS ON SITE PRIOR TO DEMOLITION OR CONSTRUCTION AND REPORT ANY ERRORS OR OMISSIONS TO DEPARTMENTAL REPRESENTATIVE.
- CONTRACTORS MUST VISIT THE SITE & FULLY FAMILIARIZE THEMSELVES WITH THE SCOPE OF THE WORK.
- PREVENT THE SPREAD OF DUST & DEBRIS BEYOND THE WORK AREA AND CLEAN ALL SURFACES AT COMPLETION.
- MAKE GOOD ALL SURFACES AFFECTED BY THIS WORK.
- COORDINATE ALL SHUTDOWNS WITH THE DEPARTMENTAL REPRESENTATIVE.
- PROVIDE ALL LABOUR AND MATERIAL REQUIRED TO FORM A COMPLETE, FUNCTIONAL SYSTEM AS DESCRIBED ON DRAWINGS.

0	OCT. 2016	ISSUED FOR TENDER	BL
No.	Date	Revision	By: Par:
Date Printed DD MM YYYY		Date imprimée	

- Verify all dimensions and site conditions and be responsible for same
- Vérifier toutes les dimensions et l'état des lieux et en assumer la responsabilité



project
M-32
OCRE WAVE ABSORBERS

MONTREAL ROAD CAMPUS
 drawing
CORNER ABSORBER

designed	conçu	date	date
BL		OCT. 2016	
drawn	dessiné	scale	échelle
BL		AS NOTED	
checked	vérifié	sheet	feuille
IDT		5 of/ de 5	
approved	approuvé	W.O.no.	D.T.no.
IDT			

dwg.no. **5242-A05** dessin no.