



PROJECT # 131-19106-04



### LEGEND

#### HVAC SYMBOLS:

- RETURN GRILLE
- EXHAUST GRILLE
- BRANCH DUCT, SIZE AS NOTED
- BRANCH DUCT TO BE REMOVED, SIZE AS NOTED
- SUPPLY AIR DUCT, TOWARD, AWAY
- RETURN AIR, TOWARD, AWAY
- EXHAUST AIR, TOWARD, AWAY
- ROUND DUCT, TOWARD, AWAY
- ROUND DUCT
- RECTANGULAR DUCT, SIDE FACING/DEPTH
- 25 THICK ACOUSTIC DUCT INSULATION
- DOOR UNDERCUT
- DUCT BREAK
- EQUIPMENT TAG  
TYPE OF EQUIPMENT  
EQUIPMENT NUMBER

#### ABBREVIATIONS:

- BD BALANCE DAMPER
- CD CONTROL DAMPER
- CV CONTROL VALVE
- DG DOOR GRILLE
- E/A EXHAUST AIR
- EF EXHAUST FAN
- EG EXHAUST GRILLE
- ER EXHAUST REGISTER
- FD FIRE DAMPER
- O/A OUTDOOR AIR
- R/A RETURN AIR
- RG RETURN GRILLE
- S/A SUPPLY AIR
- SG SUPPLY GRILLE
- SR SUPPLY REGISTER
- T/A TRANSFER AIR
- TG TRANSFER GRILLE

#### PLUMBING SYMBOLS:

- FLOOR DRAIN
- HUB DRAIN
- S-TRAP
- PIPE OFFSET UP
- PIPE OFFSET DOWN
- PIPE CAP
- PIPE CONTINUES
- CLEANOUT
- COLD WATER
- HOT WATER
- HOT WATER RECIRCULATION
- SANITARY PIPING UNDER FLOOR
- SANITARY PIPING ABOVE FLOOR
- PLUMBING VENT
- VENT TO ROOF

#### ABBREVIATIONS:

- C COLD WATER
- CO CLEANOUT
- H HOT WATER
- L or LB LAVATORY BASIN
- FD FLOOR DRAIN
- FFL FINISHED FLOOR LEVEL
- S SINK
- SAN SANITARY PIPING
- SH SHOWER
- VTR VENT TO ROOF
- WC WATER CLOSET

#### FIRE PROTECTION SYMBOLS:

- FE  
FIRE EXTINGUISHER

TAG	SERVICE	TYPE	ORIENTATION	VOLUME L / Usgal	DIMENSIONS mm	TOP TAPPINGS # - mm	FRONT TAPPINGS # - mm	MAX. WORKING PRESSURE kPa / psi	HEATING ELEMENTS	NOTES
T-DHW1	BLDG DOMESTIC HOT WATER	ELECTRIC	VERTICAL	285 / 75	OL: 1508 DIA: 610	2 - 20	TOP: NONE MID: NONE BOTTOM: NONE	1035 / 150	2x 4.5kW, NON-SIMULTANEOUS, 208V-3P	1, 2
ET-DHW1	BLDG DOMESTIC HOT WATER	EXPANSION	VERTICAL	10 / 3.2	OL: 381 DIA: 229	20	TOP: NONE MID: NONE BOTTOM: NONE	- / -	-	1
T-DHW2	HA DOMESTIC HOT WATER	ELECTRIC	VERTICAL	25 / 6	OL: 394 DIA: 362	NONE	TOP: 1 - 20 MID: NONE BOTTOM: 1 - 20	1035 / 150	1x 1.5kW, 120V-1P	1, 2

NOTE:  
1. REFER TO SPECIFICATIONS  
2. TAPPINGS ARE FOR PIPE CONNECTIONS. PROVIDE ADDITIONAL TAPPINGS AS REQUIRED FOR SENSORS AND SAFETY VALVES.

MECHANICAL DRAWING LIST		
DRAWING NO.	DRAWING NAME	SCALE
M0.01	LEGEND, DRAWING LIST & SCHEDULES	N/A
M1.01	PLUMBING MAIN FLOOR PLAN	1:100
M2.01	HVAC MAIN FLOOR PLAN	1:100

Revision/Revision	Description/Description	Date/Date
3	TENDER	2016-09-19
2	95% REVIEW	2016-08-12
1	86% REVIEW	2016-07-28

Client/Client  
**FISHERIES AND OCEANS,  
REAL PROPERTY,  
SAFETY AND SECURITY**  
  
VANCOUVER, BC  
200-401 BURRARD ST.

Project title/Titre du projet  
**FAIRVIEW HARBOUR  
PRINCE RUPERT, B.C.**

**PRINCE RUPERT  
SAR STATION**

Consultant Signature Box Only

Designed by/Concept par  
**ASV/PDT**

Drawn by/Dessiné par  
**DMM/HCP**

PWGSC Project Manager/Administrateur de Projets TPSGC  
--

PWGSC, Regional Manager, Architectural and Engineering Services/  
Gestionnaire régionale, Services d'architecture et de génie, TPSGC  
**PREETIPAL PAUL**

Drawing title/Titre du dessin

**LEGEND SCHEDULES  
& DRAWING LIST**

Project No./No. du projet	Sheet/ Feuille	Revision no./ La Révision no.
R.000000.000	M0.01	A

TAG	SERVICE	HEATING		COOLING		INDOOR UNIT				OUTDOOR UNIT		NOTES	
		kW / MBH	ELEC kW	SENSIBLE kW / MBH	TYPE	AIR FLOW L/s / cfm	ESP Pa / in	MOTOR HP	VOLTS	PHASE	VOLTS		PHASE
HP-1	BUILDING HEAT/COOL	10.7 / 36.4	7.2	12.0 / 41	VERTICAL	660 / 1400	125 / 0.5	1/2	208	3	208	3	1, 2, 3, 4

NOTE:  
1. SPLIT AIR CONDITIONING UNIT WITH DOUBLE CIRCUITED COIL SUITABLE FOR LOW AMBIENT OPERATION -16.7°C [2°F].  
2. HEATING SHALL BE RATED AT:  
OAT: 8.3°C [47°F] DB  
EAT: 24.4/16.7°C [76/62°F] DB/WB.  
3. COOLING SHALL BE RATED AT:  
OAT: 30°C [85°F] DB/WB.  
EAT: 24.4/16.7°C [76/62°F] DB/WB.  
4. R-410 REFRIGERANT (HCFC REFRIGERANTS SHALL NOT BE USED).

GRILLE, REGISTER AND DIFFUSER SCHEDULE									
TAG	TYPE	BORDER	MATERIAL	CORE STYLE	LOUVRE ORIENT.	VOLUME DAMPER	FASTENING	FINISH	
SR	SUPPLY REGISTER	SURFACE	ALUMINIUM	AIRFOIL DOUBLE DEFLECTION	L	YES	SCREW	BAKED ENAMEL, ALUMINIUM	
RG	RETURN GRILLE	NOTE 1	ALUMINIUM	AIRFOIL LOUVRED FIXED GRILLE	L, 45°, 20mm	NO	CONCEALED	BAKED ENAMEL, NOTE 2	
ER	EXHAUST REGISTER	NOTE 1	ALUMINIUM	12 x 12 x 12 mm EGGRATE	-	YES	SCREW	BAKED ENAMEL, ALUMINIUM	
TG	TRANSFER GRILLE	NOTE 1	ALUMINIUM	AIRFOIL LOUVRED FIXED GRILLE	L, 45°, 20mm	YES	SCREW	BAKED ENAMEL, NOTE 2	

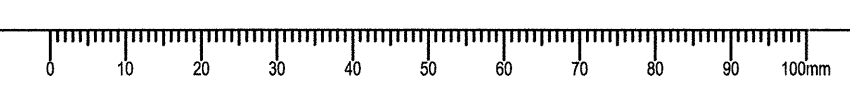
NOTE:  
1. BORDER/MOUNTING FRAME: TYPE 1 OR 3 TO SUIT APPLICATION.  
2. COLOUR TO ARCHITECT'S CHOICE.

TAG	SERVICE	AIR FLOW l/s / cfm	STATIC PRESSURE Pa / in	SONES	RPM	MOTOR HP	ELECT DATA		NOTES
							VOLTS	PHASE	
EF-101	WORKSHOP EXHAUST FAN	110 / 235	95 / 0.38	6	-	107 W	120	1	1
EF-113	COPY ROOM EXHAUST FAN	35 / 75	95 / 0.38	1.4	-	34 W	120	1	1
EF-118	WC 118 EXHAUST FAN	25 / 50	95 / 0.38	1.5	-	28 W	120	1	1

NOTE:  
1. COMPLETE WITH ALUMINIUM GRILLE, VIBRATION ISOLATION, FLEXIBLE CONNECTIONS, SPEED CONTROLLER FOR BALANCING, CONTROL DAMPER.

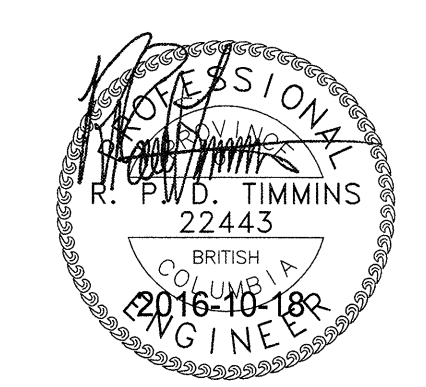
HEAT RECOVERY VENTILATOR (HRV) SCHEDULE									
TAG	SERVICE	AIR FLOW l/s / cfm	EFFECTIVENESS %	STATIC PRESSURE Pa / in	RPM	MOTOR HP	ELECT. DATA		NOTES
HRV-1	BUILDING HRV	150 / 315	51	100 / 0.4	1350	1/3	120	1	1, 2, 3

NOTE:  
1. ACCESSORIES: DRAFT CONTROLLER, AIR PROVING SWITCH, DEFROST CYCLE  
2. PLUG-IN POWER  
3. UNIT COMPLETE WITH VIBRATION ISOLATION, FLEXIBLE CONNECTIONS & SEISMIC RESTRAINT





PROJECT # 131-19106-04



3	TENDER	2016-09-19
2	99% REVIEW	2016-08-12
1	66% REVIEW	2016-07-28
Revision/	Description/Description	Date/Date
Revision		

**FISHERIES AND OCEANS, REAL PROPERTY, SAFETY AND SECURITY**  
 VANCOUVER, BC  
 200-401 BURRARD ST.

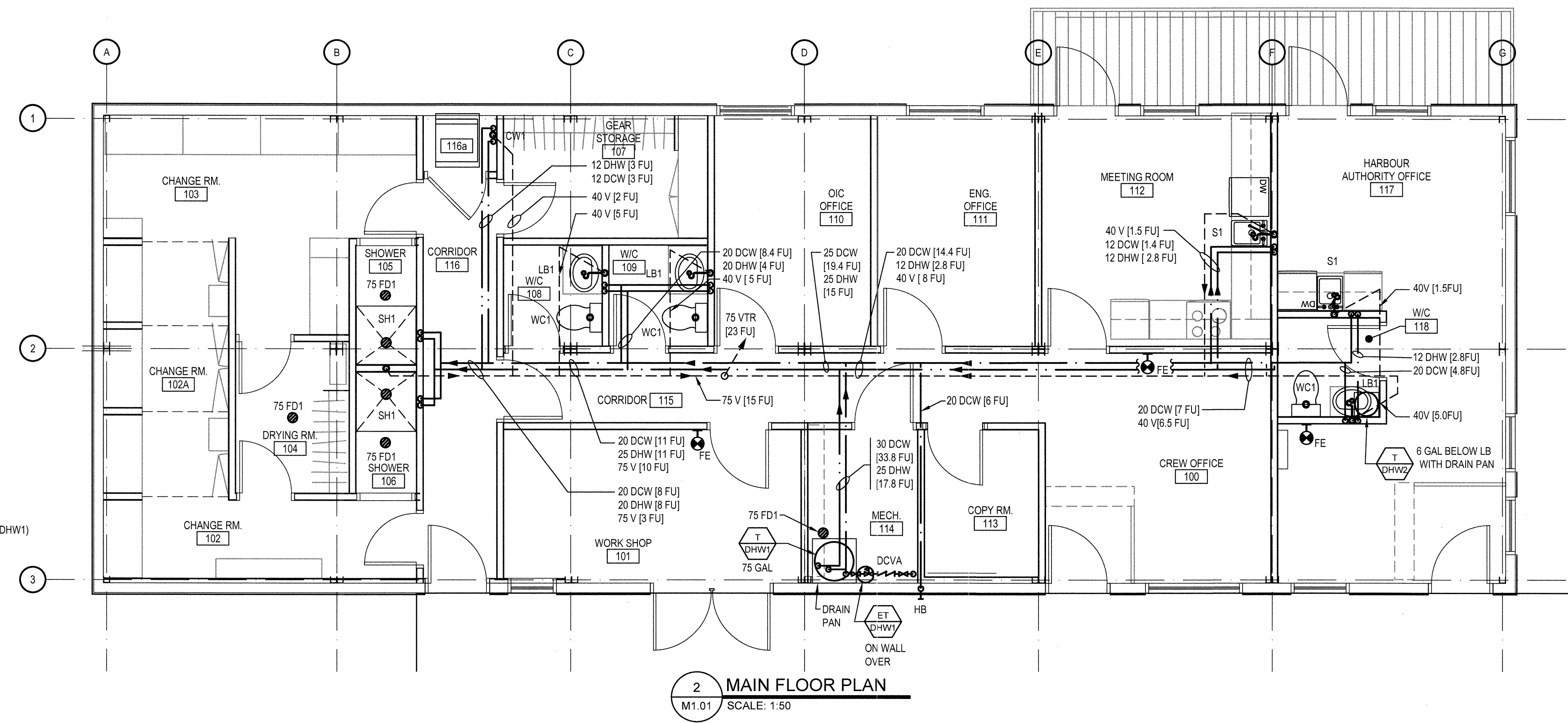
Project title/Titre du projet  
**FAIRVIEW HARBOUR PRINCE RUPERT, B.C.**

**PRINCE RUPERT SAR STATION**

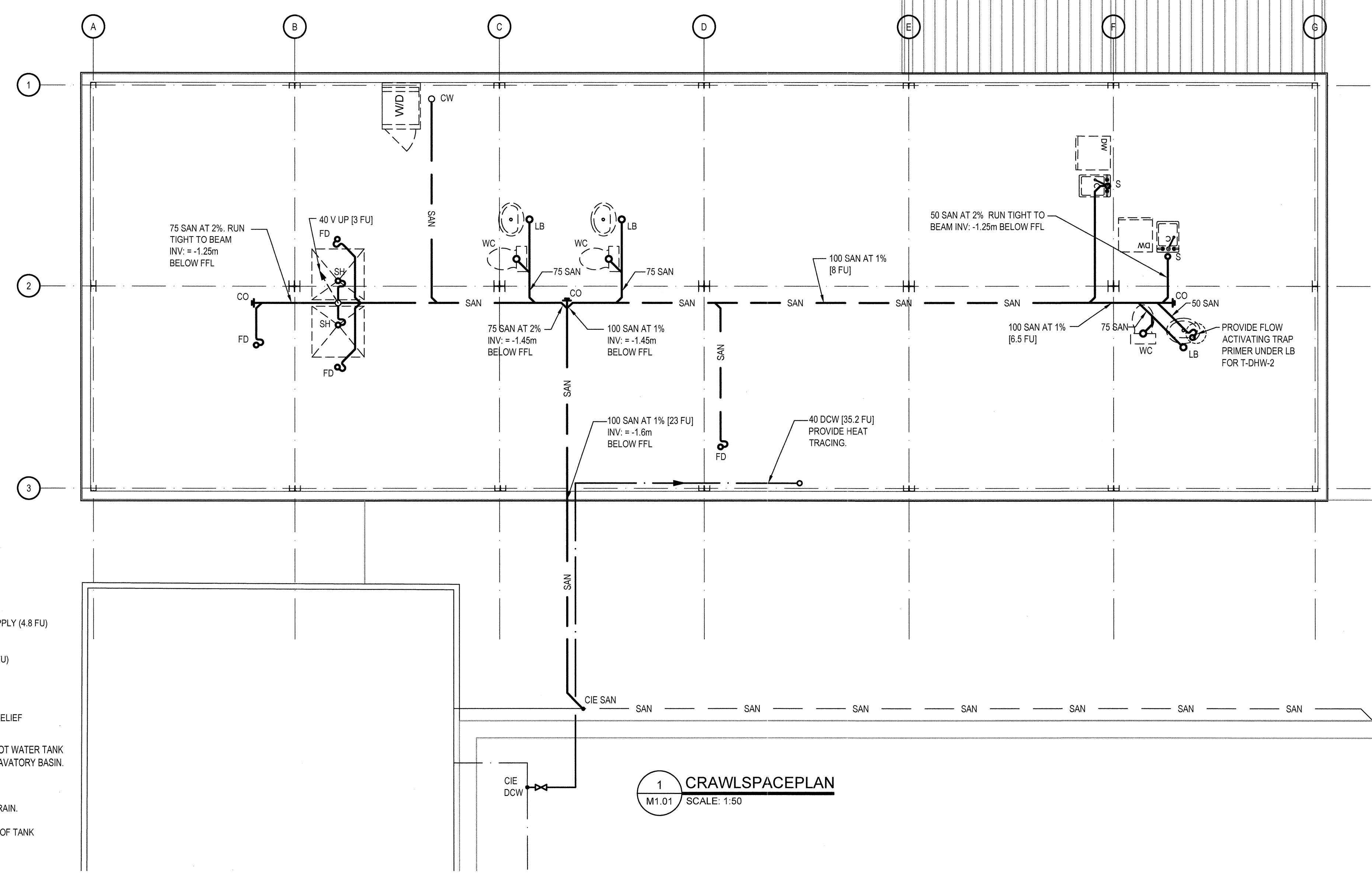
Consultant Signature Box Only  
 Designed by/Concept par  
**ASV/PDT**  
 Drawn by/Dessiné par  
**DMH/HCP**  
 PWGSC Project Manager/Administrateur de Projets TPSGC  
 PWGSC Regional Manager, Architectural and Engineering Services /  
 Gestionnaire régionale, Services d'architecture et de génie, TPSGC  
**PREETIPAL PAUL**  
 Drawing title/Titre du dessin

**PLUMBING MAIN FLOOR PLAN**

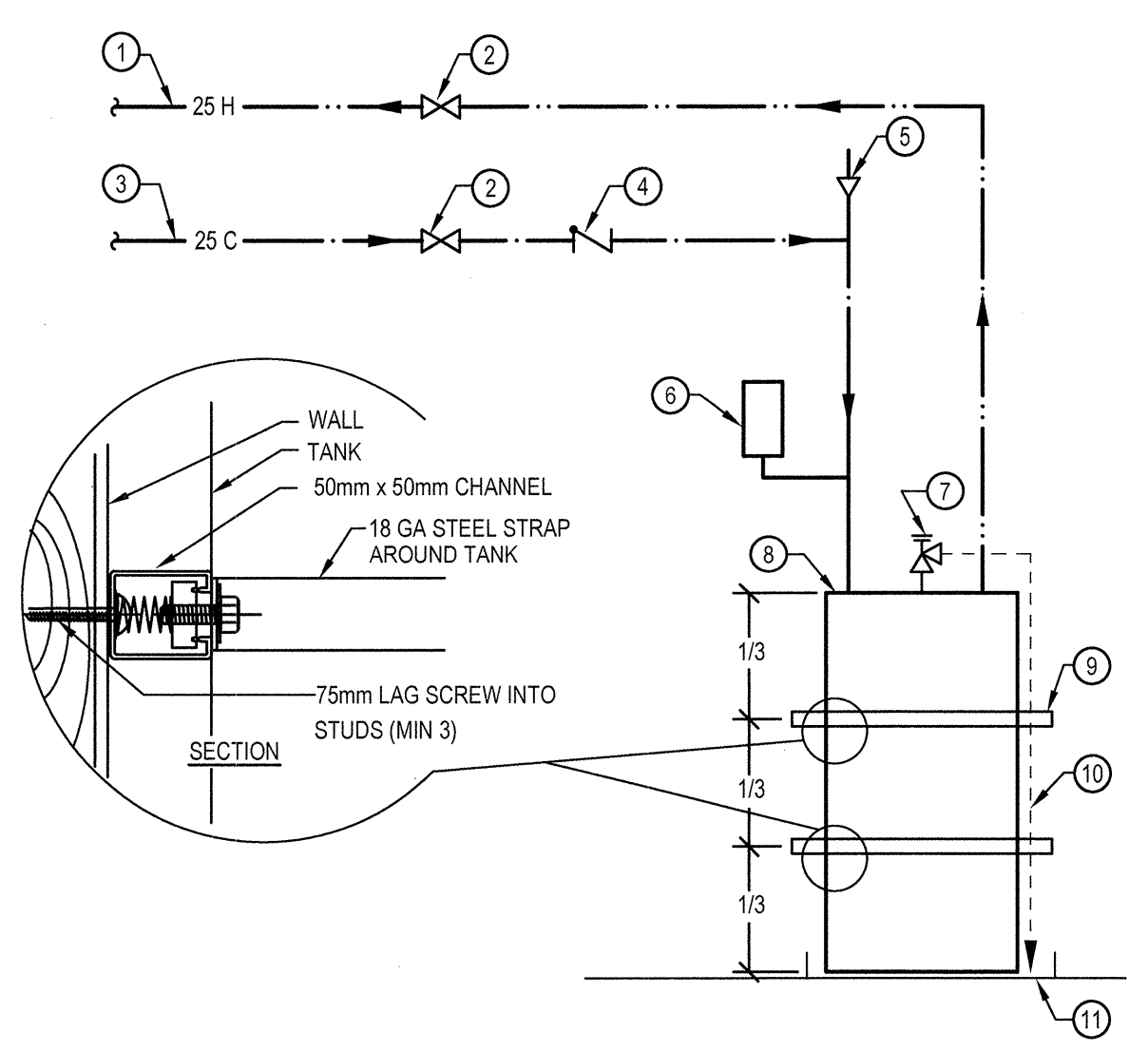
Project No./No. du projet	Sheet/ Feuille	Revision no./ La Révision no.
<b>R.000000.000</b>	<b>M1.01</b>	<b>A</b>



**2 MAIN FLOOR PLAN**  
 M1.01 SCALE: 1:50



**1 CRAWLSPACE PLAN**  
 M1.01 SCALE: 1:50



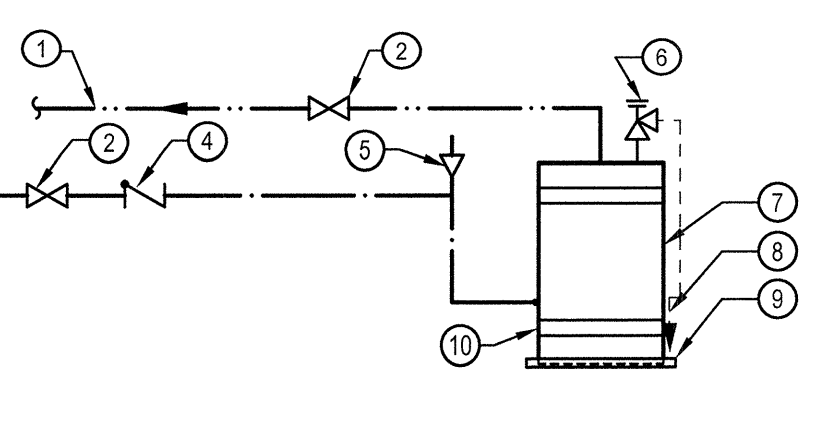
**4 75 GALLON DHW TANK**  
 M1.01 SCALE: NTS

**FIXTURE ROUGH-IN SCHEDULE**  
 ROUGH-IN FIXTURE PIPING CONNECTIONS IN ACCORDANCE WITH THE FOLLOWING TABLE OF MINIMUM SIZES.

FIXTURE	COLD WATER	HOT WATER	SANITARY	VENT	HYDRAULIC LOADS PUBLIC	
					C	H
FLOOR DRAIN	-	-	75	40	-	-
HOSE BIBB (20mm)	20	-	-	-	6	-
SINK (8.3 LPM OR LESS (<))	12	12	40	30	1.4	1.4
LAVATORY BASIN (8.3 LPM <)	12	12	50	40	2	2
SHOWER (9.5 LPM <)	12	12	50	40	4	4
WATER CLOSET (TANK 6LPM <)	12	-	75	40	2.2	-
CLOTHES WASHER (3.5KG)	12	12	50	30	3	3
DISHWASHER (DOMESTIC)	-	12	40	30	-	1.4

**GENERAL NOTES:**

- ALL DOMESTIC WATER AND VENT PIPES SHALL RUN IN WALLS, ABOVE CEILINGS OR WITHIN BULKHEADS. SEE ARCHITECTURAL DRAWINGS FOR CEILING AND BULKHEAD LOCATIONS.
- SANITARY PIPES SHALL RUN BENEATH STRUCTURAL BEAMS. SEE STRUCTURAL DRAWINGS FOR BEAM LOCATIONS AND SIZES.
- INSULATE AND HEAT TRACE ALL BELOW FLOOR DCW, SANITARY PIPES AND TRAPS INCLUDING UNDER WHARF.



**3 6 GALLON DHW TANK**  
 M1.01 SCALE: NTS

- 20 DOMESTIC HOT WATER SUPPLY (4.8 FU)
- VALVE
- 20 COLD WATER SUPPLY (4.8 FU)
- CHECK VALVE
- VACUUM RELIEF VALVE
- TEMPERATURE & PRESSURE RELIEF VALVE
- 6 GAL. ELECTRIC DOMESTIC HOT WATER TANK (T-DHW2), MOUNTED BELOW LAVATORY BASIN.
- T & P RELIEF DISCHARGES DIRECTLY OVER DRAIN.
- 25mm DRAIN PAN, PIPED TO DRAIN.
- PROVIDE SEISMIC RESTRAINT OF TANK

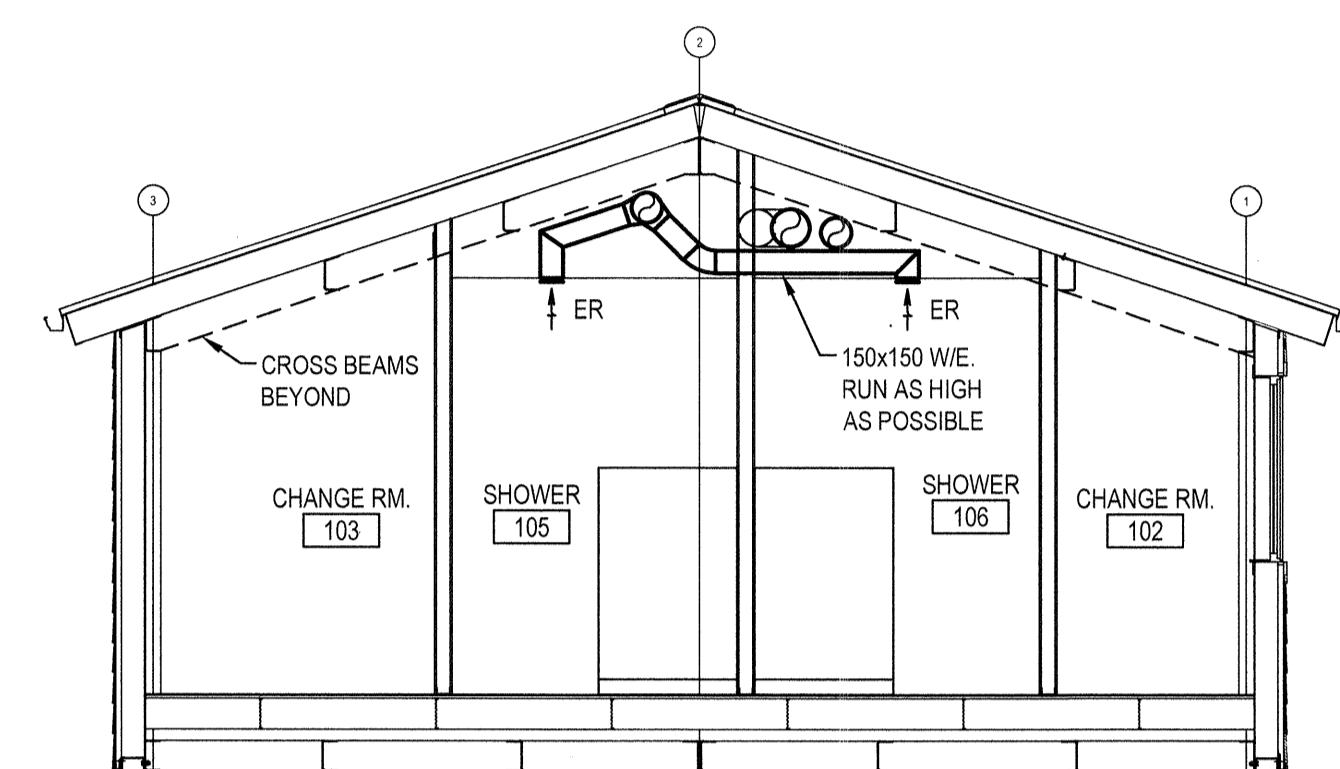
Date: 15-11-16 2:31:03 PM File name: R:\063972\001 - 0 - A0 - 00 - Cover Page (M1.01) (Rev. 1)



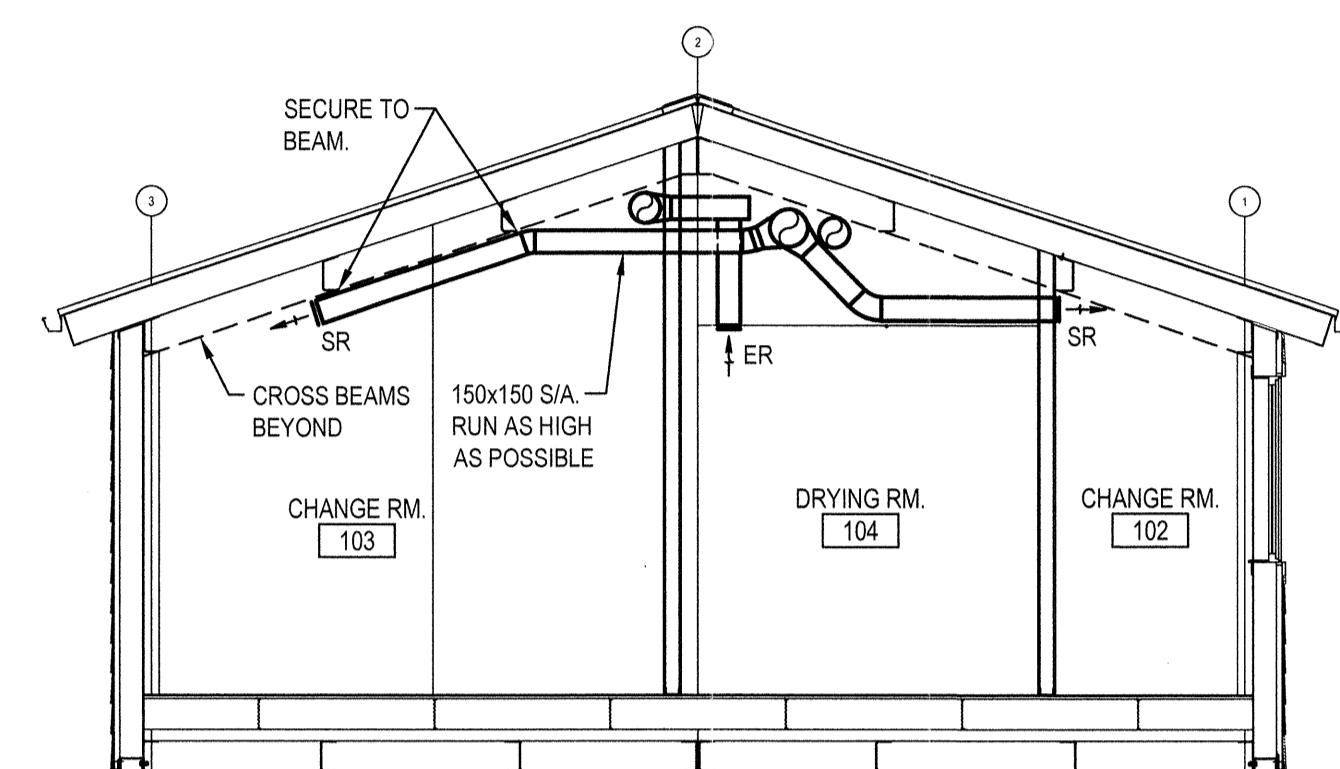
PROJECT # 131-19106-04



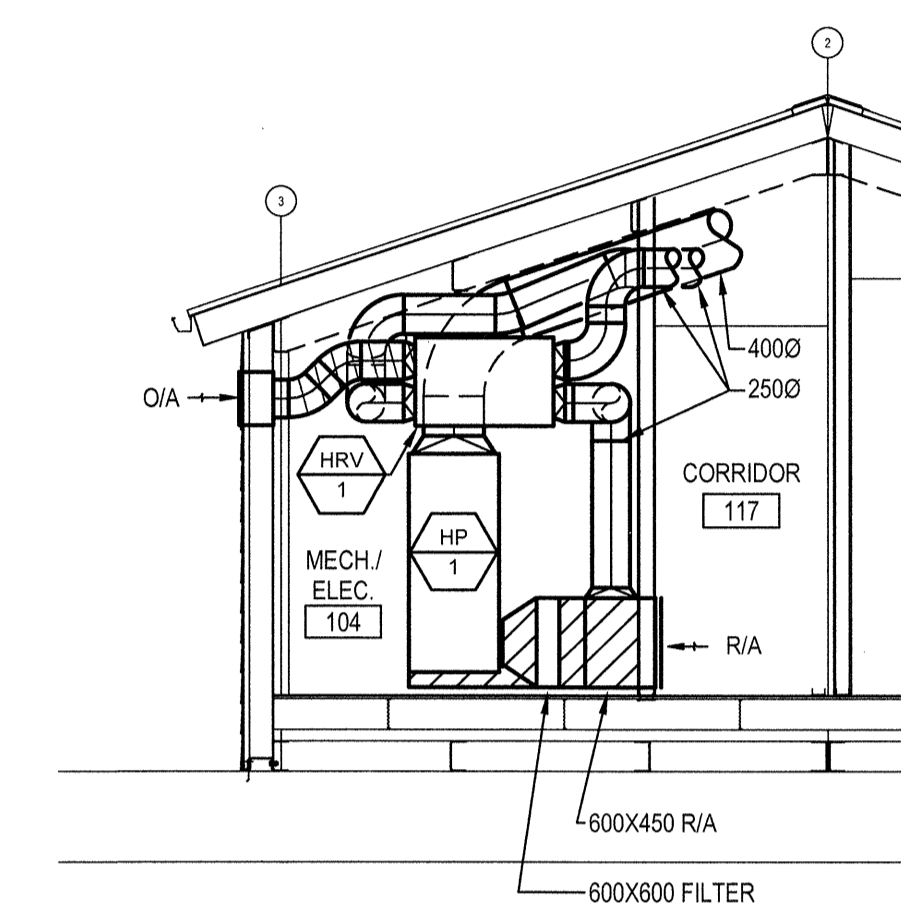
AIR TERMINAL SCHEDULE									
ROOM	GRILLES AND DIFFUSERS								
NO.	NAME	TYPE	NO.	SIZE W x H	AIR FLOW ls / cfm	TYPE	NO.	SIZE W x H	AIR FLOW ls / cfm
100	CREW OFFICE	SR	1	200 x 200	95 / 200	-	-	-	-
101	WORK SHOP	-	-	-	-	-	-	-	-
102	CHANGE RM	SR	1	150 x 150	55 / 120	-	-	-	-
102A	CHANGE RM	SR	1	150 x 150	30 / 65	-	-	-	-
103	CHANGE RM	SR	1	150 x 150	70 / 150	TG	1	250 x 200	-
104	DRYING RM	UNDERCUT DOOR 25mm x2	ER	1	150 x 150	45 / 95	-	-	-
105	SHOWER	UNDERCUT DOOR 25mm	ER	1	150 x 150	25 / 55	-	-	-
106	SHOWER	UNDERCUT DOOR 25mm	ER	1	150 x 150	25 / 55	-	-	-
107	GEAR STORAGE	SR	1	150 x 150	40 / 85	TG	1	200 x 200	-
108	W/C	UNDERCUT DOOR 25mm	ER	1	150 x 150	25 / 55	-	-	-
109	W/C	UNDERCUT DOOR 25mm	ER	1	150 x 150	25 / 55	-	-	-
110	OIC OFFICE	SR	1	150 x 150	45 / 95	TG	1	200 x 200	-
111	ENG. OFFICE	SR	1	150 x 150	45 / 95	TG	1	200 x 200	-
112	MEETING RM	SR	1	200 x 200	120 / 255	TG	1	400 x 200	-
113	COPY RM	TG	1	200 x 200	-	-	-	-	-
114	MECH. RM	-	-	-	-	RG	1	450 x 600	-
115	CORRIDOR	TG	1	500 x 450	-	-	-	-	-
117	HA OFFICE	SR	2	200 x 150	80 / 170	TG	1	450 x 250	-
118	HA W/C	UNDERCUT DOOR 25mm	-	-	-	-	-	-	-



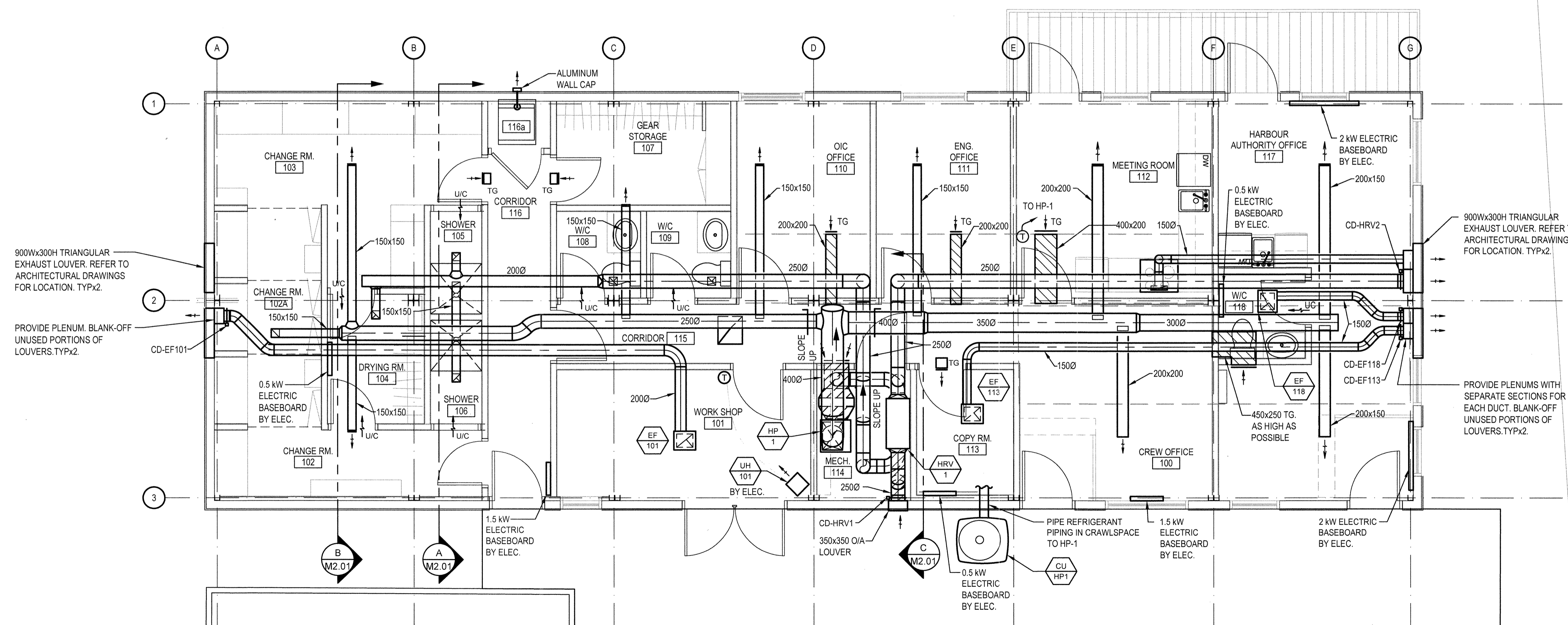
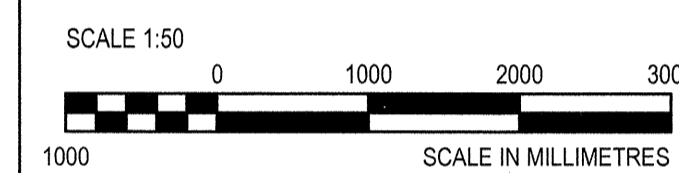
A SECTION  
M2.01 SCALE: 1:50



B SECTION  
M2.01 SCALE: 1:50



C SECTION  
M2.01 SCALE: 1:50



1 MAIN FLOOR PLAN  
M2.01 SCALE: 1:50

3	TENDER	2016-09-19
2	99% REVIEW	2016-08-12
1	66% REVIEW	2016-07-28

Revision/Revision Description/Description Date/Date

Client/Client

**FISHERIES AND OCEANS,  
REAL PROPERTY,  
SAFETY AND SECURITY**  
  
VANCOUVER, BC  
200-401 BURRARD ST.

Project title/Titre du projet  
**FAIRVIEW HARBOUR  
PRINCE RUPERT, B.C.**

**PRINCE RUPERT  
SAR STATION**

Consultant Signature Box Only

Designed by/Concept par  
**ASV/PDT**

Drawn by/Dessiné par  
**DMH/HCP**

PWGSC Project Manager/Administrateur de Projets TPSGC

PWGSC, Regional Manager, Architectural and Engineering Services /  
Gestionnaire régionale, Services d'architecture et de génie, TPSGC  
**PREETIPAL PAUL**

Drawing title/Titre du dessin

**HVAC  
MAIN FLOOR PLAN**

Project No./No. du projet <b>R.000000.000</b>	Sheet/ Feuille <b>M2.01</b>	Revision no./ La Révision no. <b>A</b>
--	--------------------------------	--