

F

E

D

C

B

A

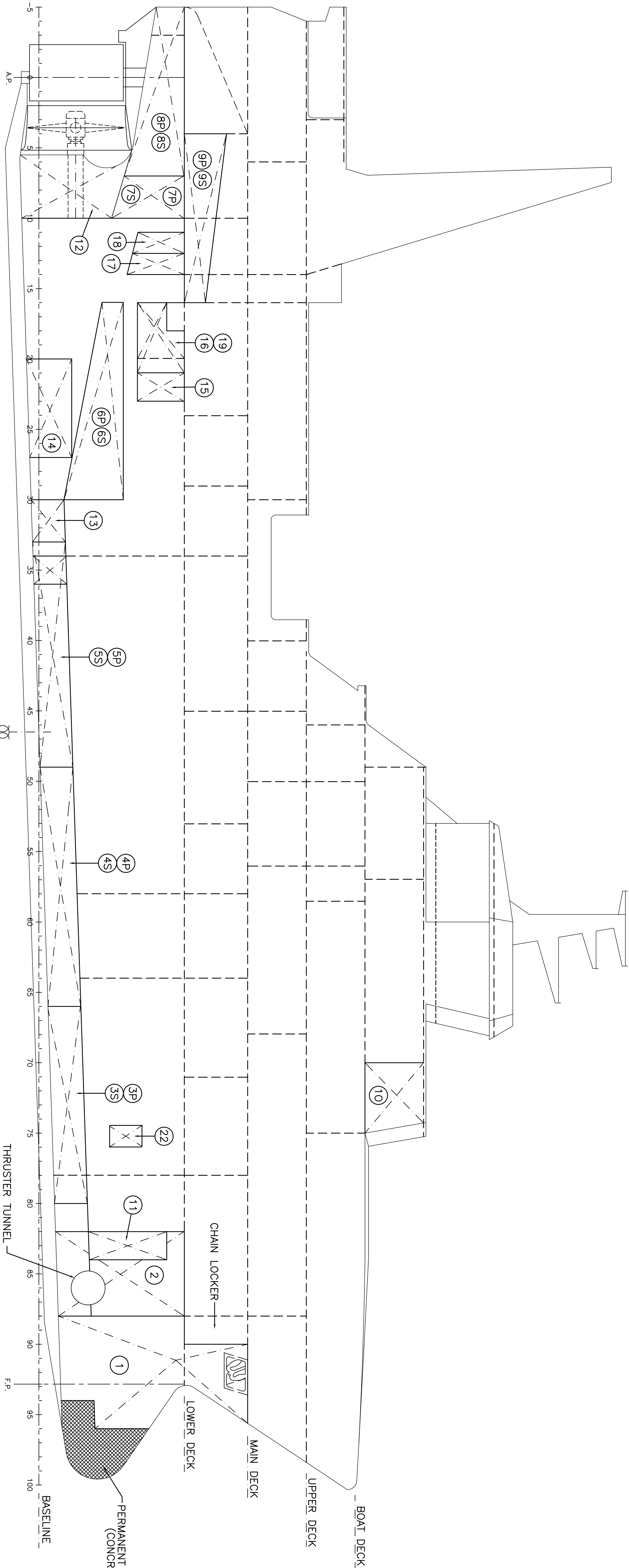
NOTES

MAIN PARTICULARS

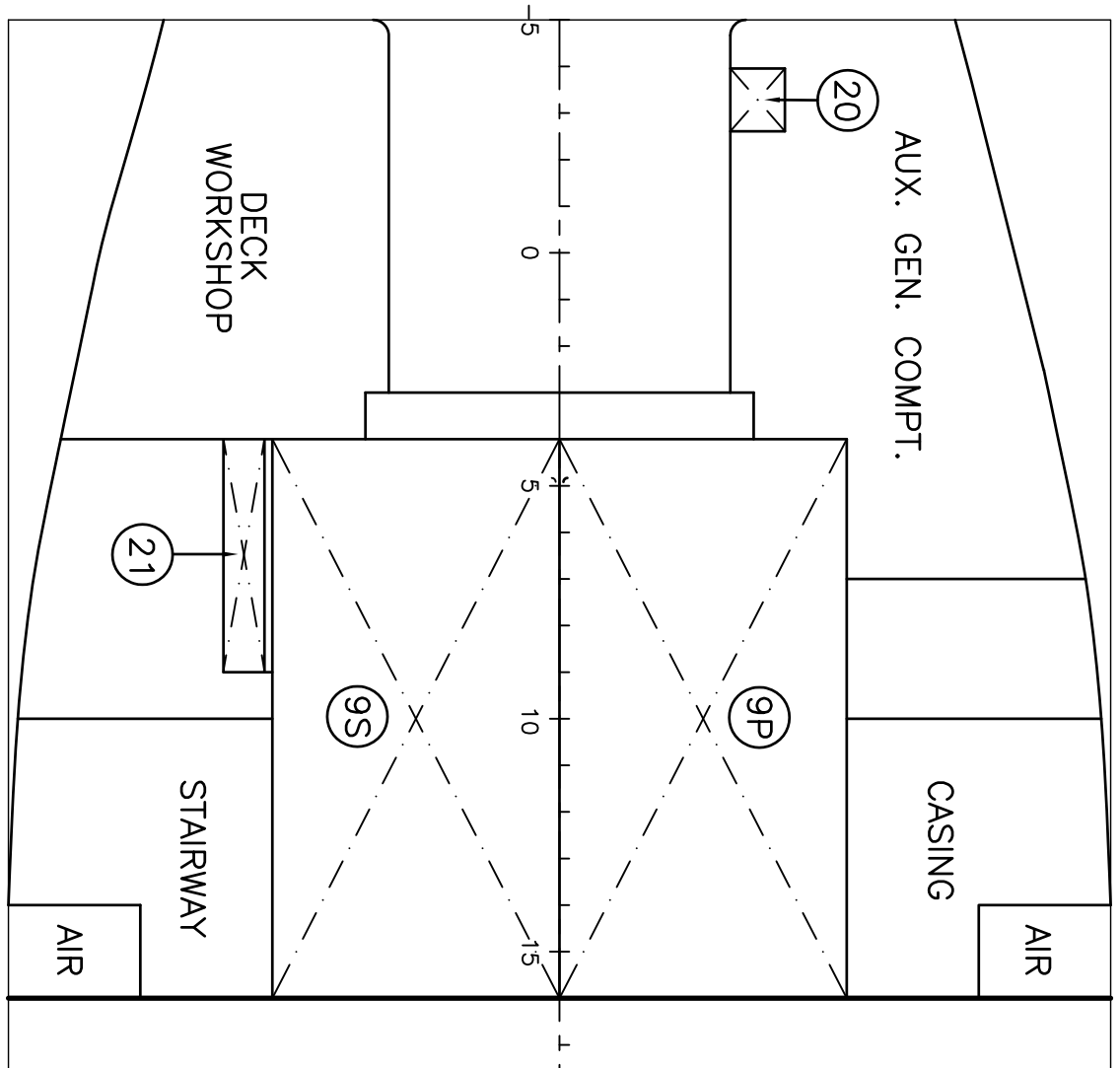
LENGTH OVERALL	63.00M
LENGTH B.P.	55.70M
BREADTH MLD.	14.20M
DEPTH MLD. LOWER DECK	6.20M
DEPTH MLD. MAIN DECK	8.90M
DEPTH MLD. UPPER DECK	11.40M
DEPTH MLD. BOAT DECK	13.90M
RISE OF FLOOR	0.70M
BILGE RADIUS	1.40M

LIQUID DENSITIES

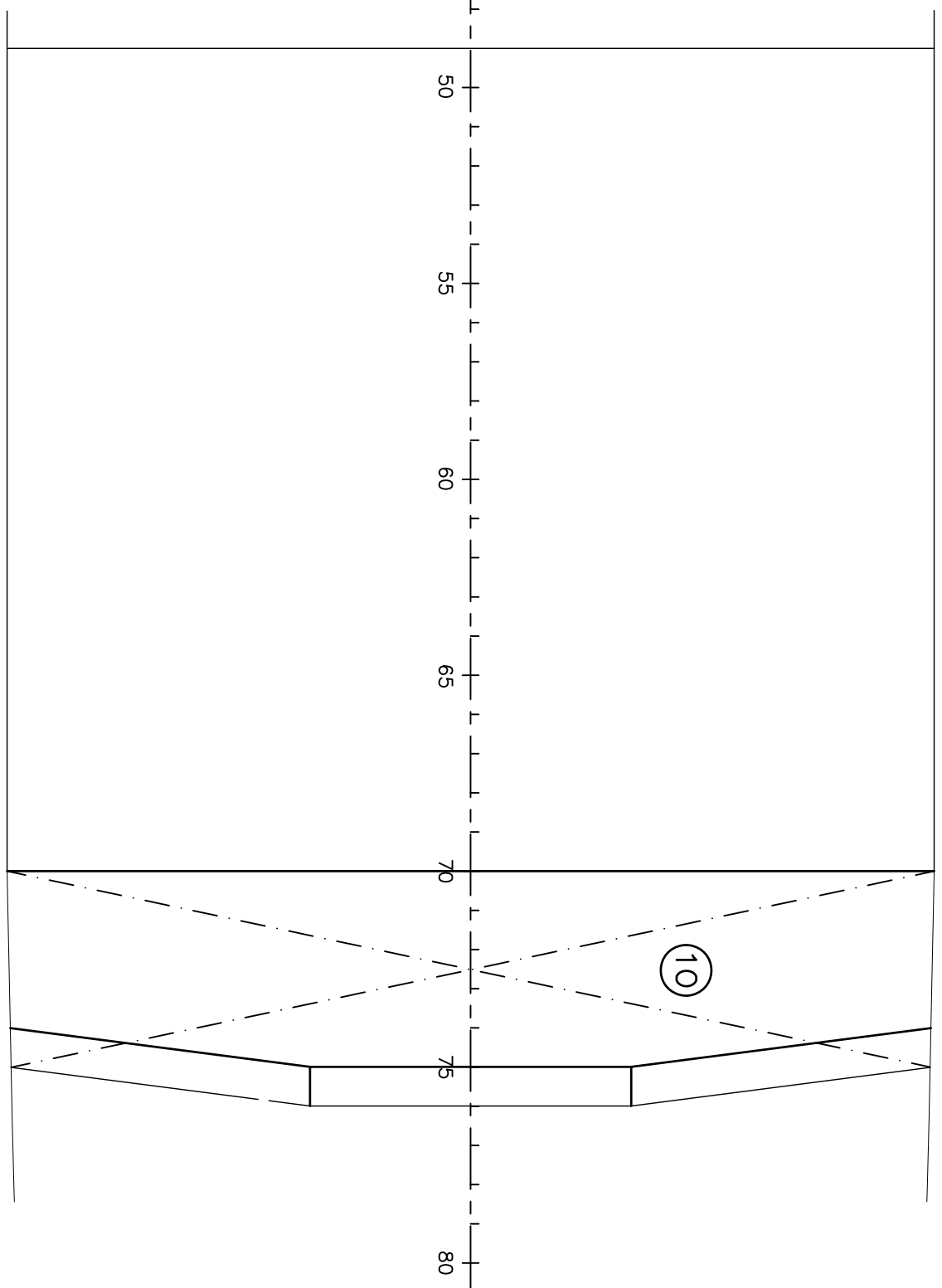
DIESEL OIL	0.845
LUBRICATING OIL	0.860
HYDRAULIC OIL	0.840
WATER BALLAST	1.025
FRESH WATER	1.000



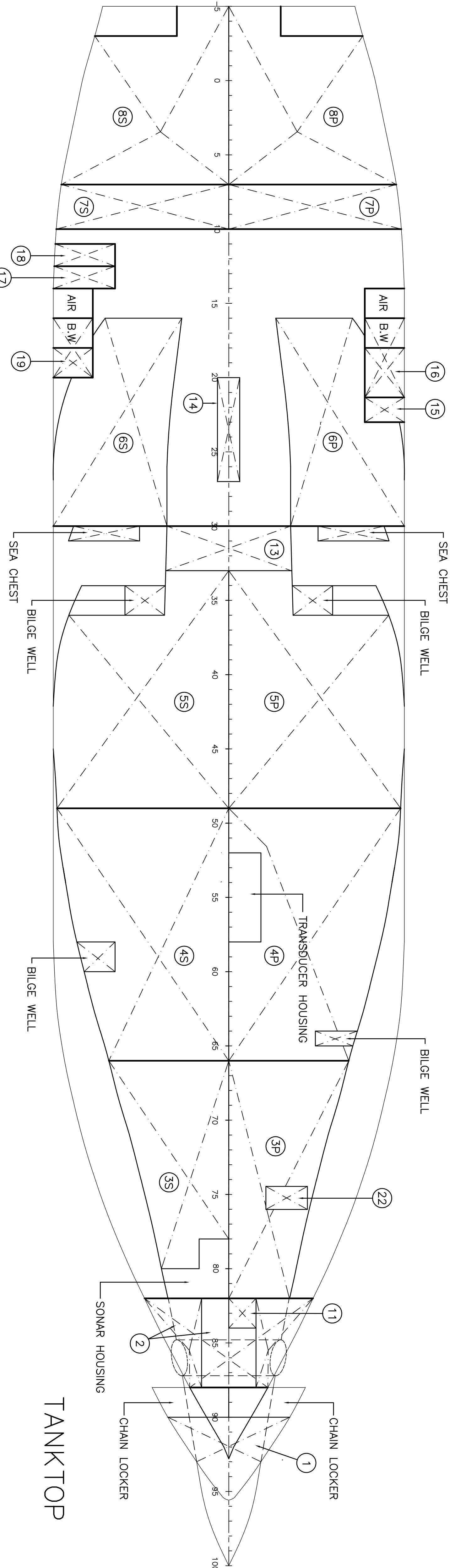
PROFILE



LOWER DECK



BOAT DECK



LIST OF TANKS

TANK No.	TANK	VOLUME (CUB. M)	WEIGHT (T)	VCG (M)	LCG (M)	MAX. F.S.M (T/M)
1	NO.1 F.P. WATER BALLAST	59.86	61.36	4.12	26.84	13.0
2	NO.2 DIESEL OIL	45.66	38.58	3.57	22.86	33.1
3P	NO.3 DIESEL OIL (P)	30.56	25.82	1.36	15.99	32.8
3S	NO.3 DIESEL OIL (S)	26.02	21.99	1.35	15.24	28.9
4P	NO.4 DIESEL OIL (P)	54.12	45.73	1.05	6.38	128.9
4S	NO.4 DIESEL OIL (S)	60.13	50.81	1.04	6.27	147.5
5P	NO.5 DIESEL OIL (P)	55.76	47.12	0.77	-2.63	183.5
5S	NO.5 DIESEL OIL (S)	55.76	47.12	0.77	-2.63	183.5
6P	NO.6 FRESH WATER (P)	45.54	45.54	2.77	-12.59	58.8
6S	NO.6 FRESH WATER (S)	45.54	45.54	2.77	-12.59	58.8
7P	NO.7 DIESEL OIL (DAY)	21.42	18.10	5.16	-22.71	38.4
7S	NO.7 DIESEL OIL (SETTLING)	21.42	18.10	5.16	-22.71	38.4
8P	VOID	—	—	—	—	—
8S	VOID	—	—	—	—	—
9P	NO.9 DIESEL OIL (P)	26.71	22.57	6.77	-22.51	58.8
9S	NO.9 DIESEL OIL (S)	26.71	22.57	6.77	-22.51	58.8
10	NO.10 DIESEL OIL (STAB. TK.)	108.27	91.49	15.22	15.70	642.9
11	NO.11 SEWAGE	3.66	—	3.41	21.95	0.2
12	NO.12 COOLING WAT. DRAIN.	5.00	5.00	2.40	-22.75	—
13	NO.13 SLUDGE	9.74	8.08	0.52	-8.92	15.5
14	NO.14 DIESEL OIL DRAIN	7.79	6.47	0.55	-13.78	0.2
15	NO.15 LUB. OIL (AUX. ENG)	3.61	3.25	5.23	-14.65	0.4
16	NO.16 LUB. OIL (MAIN ENG)	6.63	6.15	5.14	-16.47	0.7
17	NO.17 GEAR OIL	2.68	2.41	5.46	-20.79	0.9
18	NO.18 LUB. OIL (STERTUBER)	3.19	2.87	5.35	-19.89	1.0
19	NO.19 HYD. OIL (L.P.)	4.95	4.63	5.11	-18.60	0.4
20	NO.20 DIESEL OIL (AUX. DAY)	0.70	—	7.60	-29.80	—
21	NO.21 HYD. OIL (H.P.)	2.94	2.76	7.90	-27.85	—
22	NO.22 GREY WATER	2.00	—	3.75	17.25	—

NOTE: VCG IS TAKEN FROM BASELINE AND LCG IS TAKEN FWD/AFT OF MIDSHIPS INDICATED AS +/-.

A

2

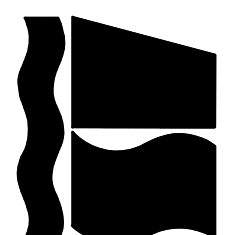
REVISION	DATE	DWG. ISSUE	OWNERS REP.	CLASS SOCIETY	SURVEYOR	NAT.AUTHORITY	Q. CONTROL	BOOKING	PROD.MGR.	SHIP MGR.	PIPE SUPPLY	STEEL SUPPLY	ENG. SUPPLY	OUTFIT SUPPLY	ELECT. SUPPLY	PURCHASING
1	08	11	1	1	1	1	1	1	1	1	1	1	1	1	1	1
2	08	11	1	1	1	1	1	1	1	1	1	1	1	1	1	1

NO	LOC	REVISIONS	DESCRIPTION	APPL	DATE
1					
2					

DWG. NO.	TITLE
1	
2	
3	
4	
5	
6	
7	
8	
9	
10	
11	
12	
13	
14	
15	
16	
17	
18	
19	
20	
21	
22	

'AS FITTED'

TITLE	TANK CAPACITY PLAN
SCALE	1:100
DRAWING NO.	4192-4100
DATE	26.09.94
CHK'D	FD
DATE	03.10.94
SH'T	1 OF 1
REV	AF



MARYSTOWN SHIPYARD LIMITED
MARYSTOWN NEWFOUNDLAND
TEL:709-100 FAX:709-108

F

E

D

C

B

A

4

3

1

1