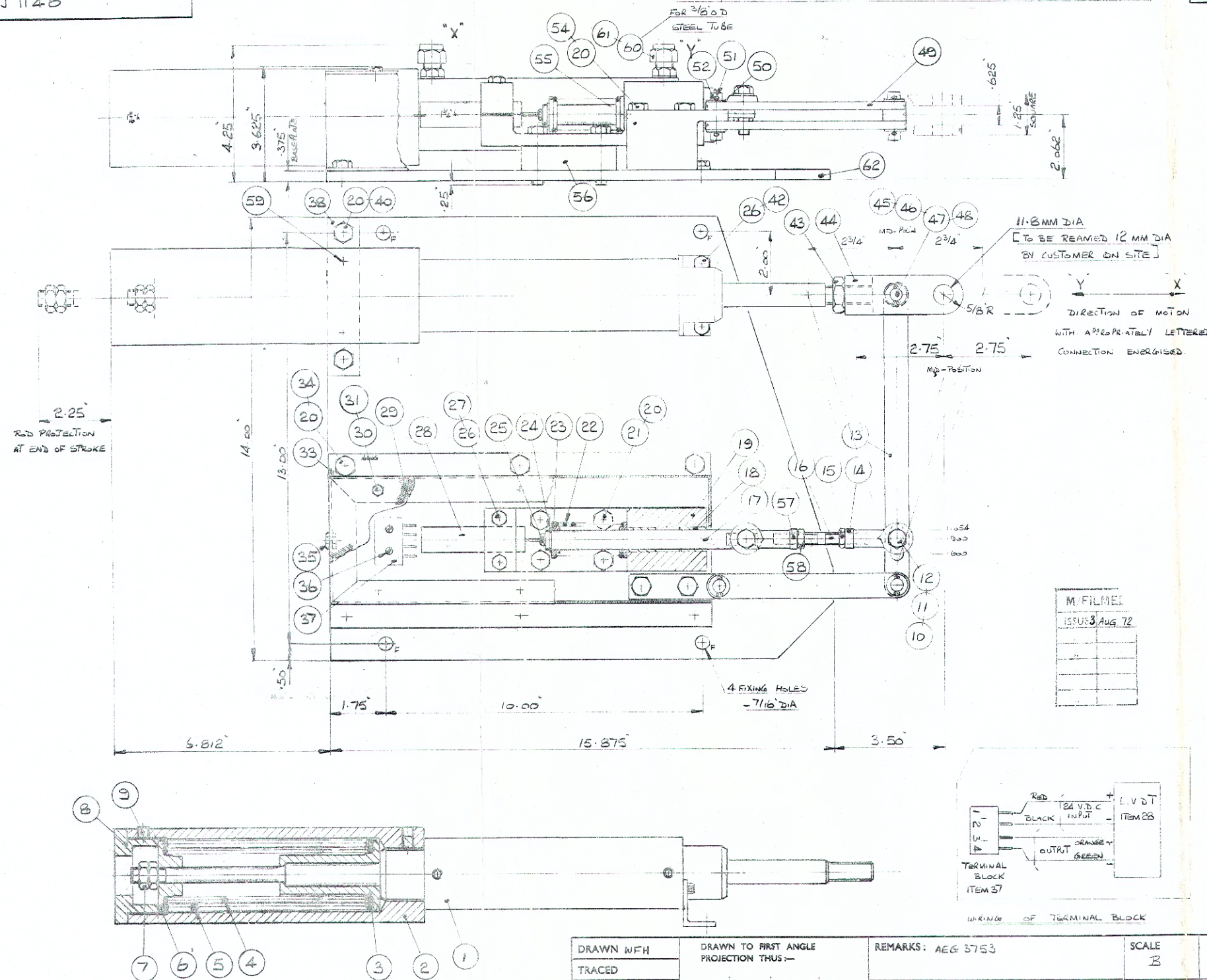


AJ 1146

ITEM	PART NUMBER	DESCRIPTION	MAT'L	QTY	REMARKS
60	037803	MALE STD CPLG	STEEL	2	1/4 BSP x 3/8"
61	036607	DOITY WASHER	-	2	1/4 BSP
62	AJ1170	MOUNTING PLATE	EN2	1	

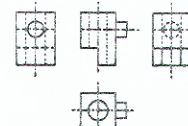
ALTERATION ISSUE No. ENCIRCLED THUS O				LATEST ISSUE CANCELS ALL PREVIOUS ISSUES			
ISSUE	DATE	D.A. No.	INITIALS	ISSUE	DATE	D.A. No.	INITIALS
2	22 6 70	13878	W F H				
3	2 12 70	14549	W F H				



ITEM	PART NUMBER	DESCRIPTION	MAT'L	NO OFF	REMARKS
58	503404	LOCKNUT	STEEL	1	3/8" UNF LH
59	026943	SCREW - C'SK	STEEL	2	3/8" UNF X 3/4"
1	70 06 5125	CYLINDER	-	1	2" DIA BORE
2	AJ 1148	SPRING HOUSING	EN 3B	1	
3	AJ 1149	SPRING CARRIER	EN 3B	1	
4	AJ 1150	SPRING	EN 49B	1	
5	AJ 1151	SPRING	EN 49B	1	
6	AJ 1152	SPRING CARRIER	EN 3B	1	
7	023305	LOCKNUT	STEEL	2	1/2" UNF
8	AJ 1153	END CAP	EN 3B	1	
9	024311	GROSSCREW	STEEL	2	3/8" UNF X 3/4"
10	022909	SCREW	STEEL	2	3/8" UNF X 1 1/4"
11	021706	SPRING WASHER	STEEL	2	3/8" DIA
12	023103	NUT	STEEL	2	3/8" UNF
13	AJ 1154	LINK	EN 2	1	
14	0227128	UNIBAL ROD END	-	1	
16	AJ 1155	ADJUSTING ROD	EN 3B	1	
15	023303	LOCKNUT	STEEL	1	3/8" UNF RH
17	AJ 1156	OPERATING ROD	EN 3B	1	
18	64 06 5430	BUSH	-	2	5/8" x 1" BUSH
19	AJ 1157	GUIDE BLOCK	EN 3B	1	
20	021706	SPRING WASHER	STEEL	14	3/8" DIA
21	022911	SCREW	STEEL	4	3/8" UNF X 3/4"
22	800 G 026	SPRING	EN 49B	1	
23	AJ 1158	SPRING CARRIER	EN 3B	2	
24	501003	CIRCLIP	STEEL	1	5/16" DIA
25	1100 G 558	NUT	EN 3B	1	Nº 1 - 72 UNF
26	0219310	SPRING WASHER	STEEL	4	1/4" DIA
27	022904	BOLT	STEEL	2	1/4" UNF X 1/2"
28	70 06 5124	LVDT DISPLACEMENT TRANSDUCER	-	1	
29	AJ 1159	COVER	EN 2	1	
30	014226	SCREW - CHEESEHEAD	STEEL	6	2BA X 1/2"
31	0223271	SPRING WASHER	STEEL	6	2BA
33	AJ 1160	ENCLOSURE	EN 2	1	
34	022709	SCREW	STEEL	6	3/8" UNF X 5/8"
35	030111	GROMMET	-	1	1/4" BORE
36		SCREW - CHEESEHEAD	STEEL	2	6BA X 1"
37	66 06 5438	TERMINAL BLOCK	-	1	4 WAY
38	AJ 1161	MOUNTING PLATE	EN 2	1	
40	022712	SCREW	STEEL	2	3/8" UNF X 3/4"
42	022704	SCREW	STEEL	2	1/4" UNF X 3/4"
43	011707	LOCKNUT	STEEL	1	5/16" BSF
44	AJ 1162	FORKED END	EN 3B	1	
45	AJ 1163	PIN	EN 41A	1	3/8" DIA
46	AJ 1164	SPACER	EN 3B	2	
47	013905	WASHER	EN 3B	2	3/8" DIA
48	013202	SPLITPIN	STEEL	2	1/16" DIA X 5/16"
49	AJ 1165	LINK	EN 2	2	
50	013905	WASHER	EN 3B	4	3/8" DIA
51	013202	SPLITPIN	STEEL	4	1/16" DIA X 5/16"
52	AJ 1166	PIN	EN 41A	2	
54	022914	BOLT	STEEL	2	3/8" UNF X 2 1/2"
55	AJ 1167	PIVOT BLOCK	EN 3B	1	
56	AJ 1168	SPACER BLOCK	EN 3B	1	
57	0225469	UNIBAL ROD END	-	1	3/8" UNF RH




DRAWN WFH	
TRACED	
CHECKED	
DATE 8.5.70	
EXAMINED:	
DESIGN	PROD

DRAWN TO FIRST ANGLE  
PROJECTION THUS:—



REMARKS: AEG 3753

**FINISHING SYMBOLS:**

	FINISH MACHINE, TURN, MILL, PLANE, Etc.		GRIND, BRASS, DIAMOND FINISH, REAM, Etc.		LAP, HOLE Etc.
---	---	---	--	---	----------------------

IF A PARTICULAR FINISH IS ABSOLUTELY NECESSARY, INSERT  
APPROPRIATE B.S.108 LETTER IN TRIANGLE.

UNLESS OTHERWISE SPECIFIED SURFACE FINISH ACCEPTED  
AS CAST, FORGED, WELDED OR FLAME CUT, Etc.

SCALE  
B

LIMITS ARE GIVEN IN THOUS. THUS:  $2\frac{1}{2} \pm .002$   
PARTS OF ONE THOU. GIVEN THUS:  $2\frac{1}{2} \pm .005$   
UNLIMITED MACHINE DIMENSIONS TO BE WITH

[illegible]

PART NAME

# ASSEMBLY & INSTALLATION - PITCH ACTUATOR

TAP HOLES:

EXCEPT UNIFORM: - TO B.S.84.  
CLOSE FIT MARKED THUS \*  
(MEDIUM FIT ALL OTHERS)

FOR UNIFIED  
THREADS:-  
TO B.S.1580.

HEAT TREATMENT

DRAWING AND PART NUMBER

AJ 1146

REGULATEURS EUROPA LTD., COLCHESTER

FINISH - LIGHT GREY HAMMER.  
IF IN DOUBT, ASK.

SCALE "A"