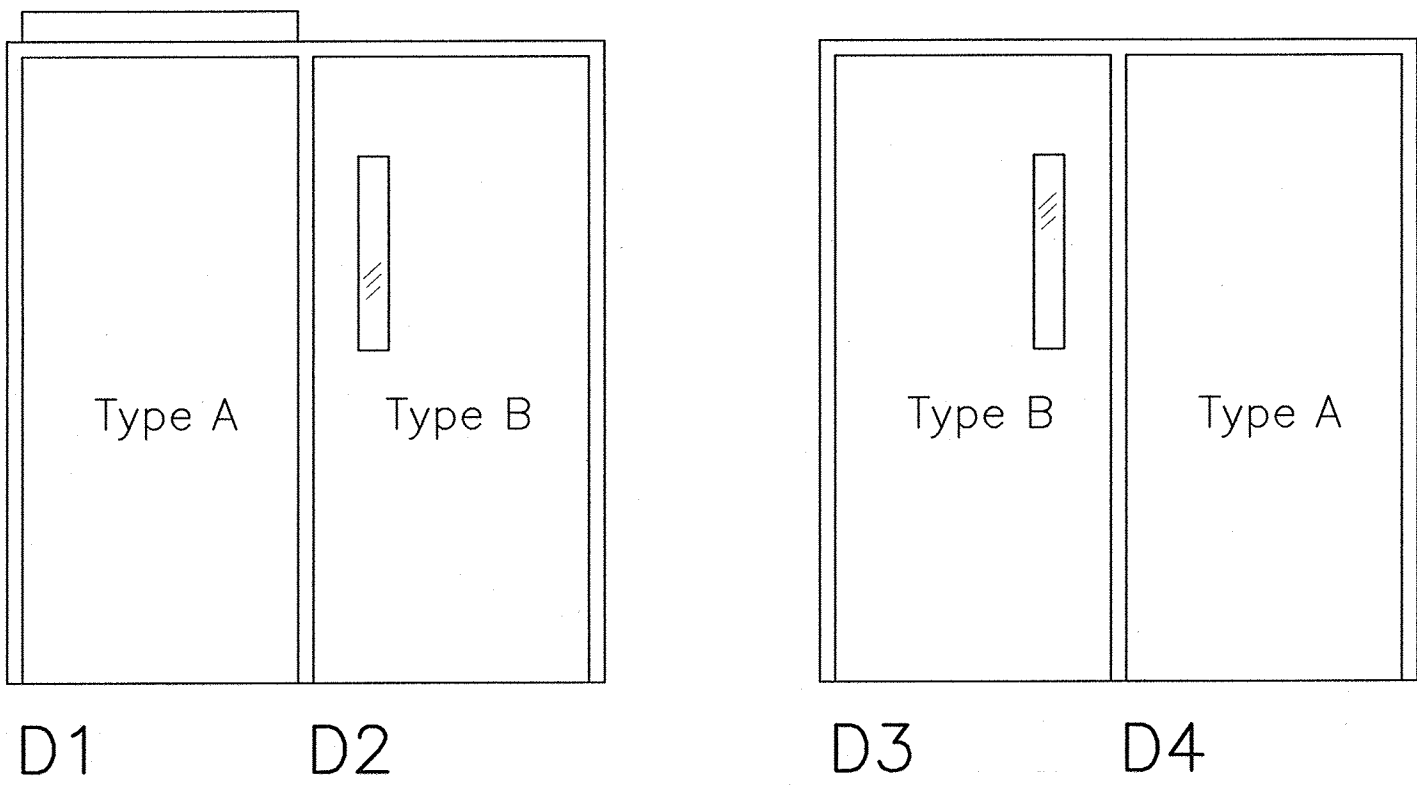


DOOR SCHEDULE

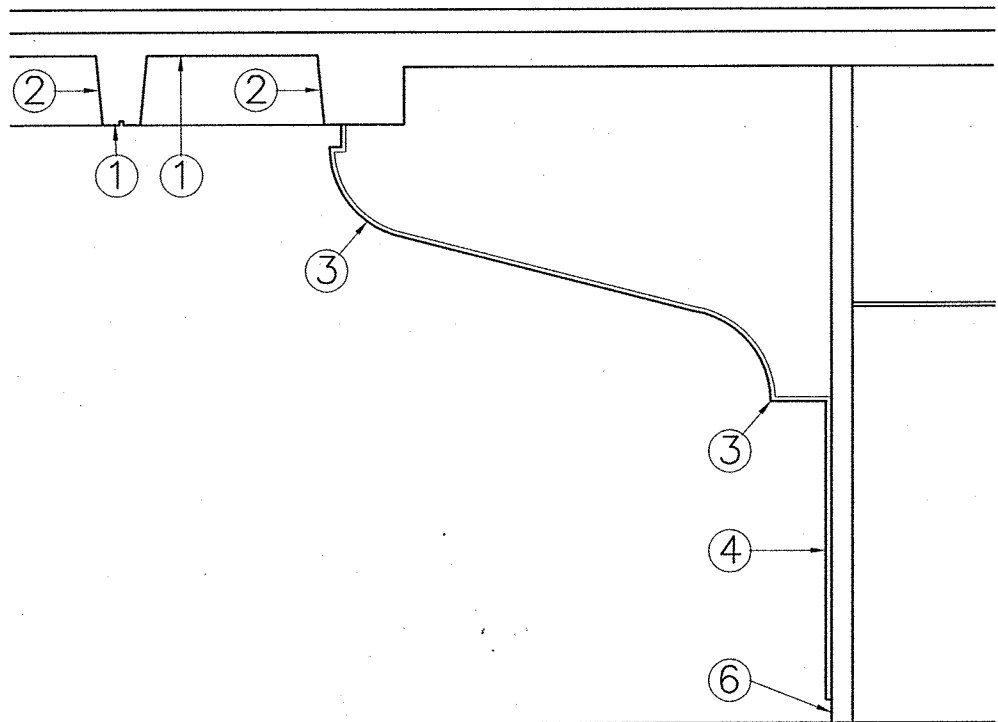
OPENINGS		DOOR				FRAME		FIRE RATING	HARDWARE GROUP	REMARKS
Number	Size	Type	Material	Finish	Light	Type	Finish			
D1	914w x 2083h opening	A	Steel	Paint	—	Steel	Paint	1.5 hr	H1	2 push button operator
D2	914w x 2083h opening	B	Steel	Paint	100x645 net	Steel	Paint	1.5 hr	H2	B/o light @ 1100 a.f.f.
D3	914w x 2083h opening	B	Steel	Paint	100x645 net	Steel	Paint	1.5 hr	H2	B/o light @ 1100 a.f.f.
D4	914w x 2083h opening	A	Steel	Paint	—	Steel	Paint	1.5 hr	H2	—



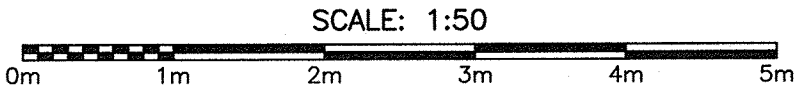
DOOR ELEVATIONS (nts)

- DOOR NOTES:
- 1. Door lights shall be 6mm wired glass.
 - 2. D1 (closest to ramp) shall be equipped with operator and 2 push-button controls.

- PAINT COLOUR NOTES (see dwg A6 also):
- Colour 1 – Bottom/horizontal surfaces of coffered slab
 - Colour 2 – Ceiling coffer sidewalls
 - Colour 3 – Suspended ceilings and bulkheads, and wood slats, above 2.1m
 - Colour 4 – Wood slat dados and walls to 2.1m, doors
 - Colour 5 – Door frames
 - Colour 6 – Base in matching carpet tile, with matching vinyl cap where exposed



AUDITORIUM PAINTING DETAIL



- SPECIAL PREPARATION NOTES:
- 1. Concrete slab holes and defects shall be patched with non-shrink epoxy based patching compound.
 - 2. Wood slats shall be repaired and securely fastened, scuff-sanded, primed with MPI 17, coated with approved intumescent coating tinted to match topcoat, and finished with wearing topcoat, to achieve full compliance with manufacturer's instructions for Class A flame spread rating.
 - 3. See specifications for coating formulations specific to each substrate.

INTERIOR FINISH SCHEDULE

ROOM		FLOOR		WALLS					CEILING			REMARKS
Number	Name	Substrate	Finish	Side	Base	Material	Finish	Dado	Material	Finish	Height	
J14-113	AUDITORIUM	Concrete	Carpet	NORTH	Carpet	Existing	Paint	As existing	Existing	Paint	2 to 6m	Projection screen paint behind curtain
				SOUTH	Carpet	Existing	Paint	”				Except carpet walls below glazed panels
				WEST	Carpet	Existing	Paint	”				See note 2 above re wood slats
				EAST	Carpet	Existing	Paint	”				See note 2 above re wood slats

Note: See spec, and notes and details above. Protect existing oak trims, touch up to like-new condition where needed.

NEWFOUNDLAND AND LABRADOR MEMBER * Roman Halliday, P. Eng. Expires Dec 31, 2016 Date: Nov 25, 2016 ASSOCIATION OF ARCHITECTS

* See note, sheet A0.1

0 FOR TENDER NOV. 21 2016

revisions date

project projet

NORTHWEST ATLANTIC FISHERIES CENTRE ST. JOHN'S, NL AUDITORIUM UPGRADES

drawing dessin

SCHEDULES & DETAILS

designed conçu

date

drawn dessiné

date

approved approuvé

date

Tender 2015-11-30 Submission

PWGSC/Project Manager Administrateur de projets TPSGC

project number no. du projet

R.081909.001

drawing no. no. du dessin

A7

