

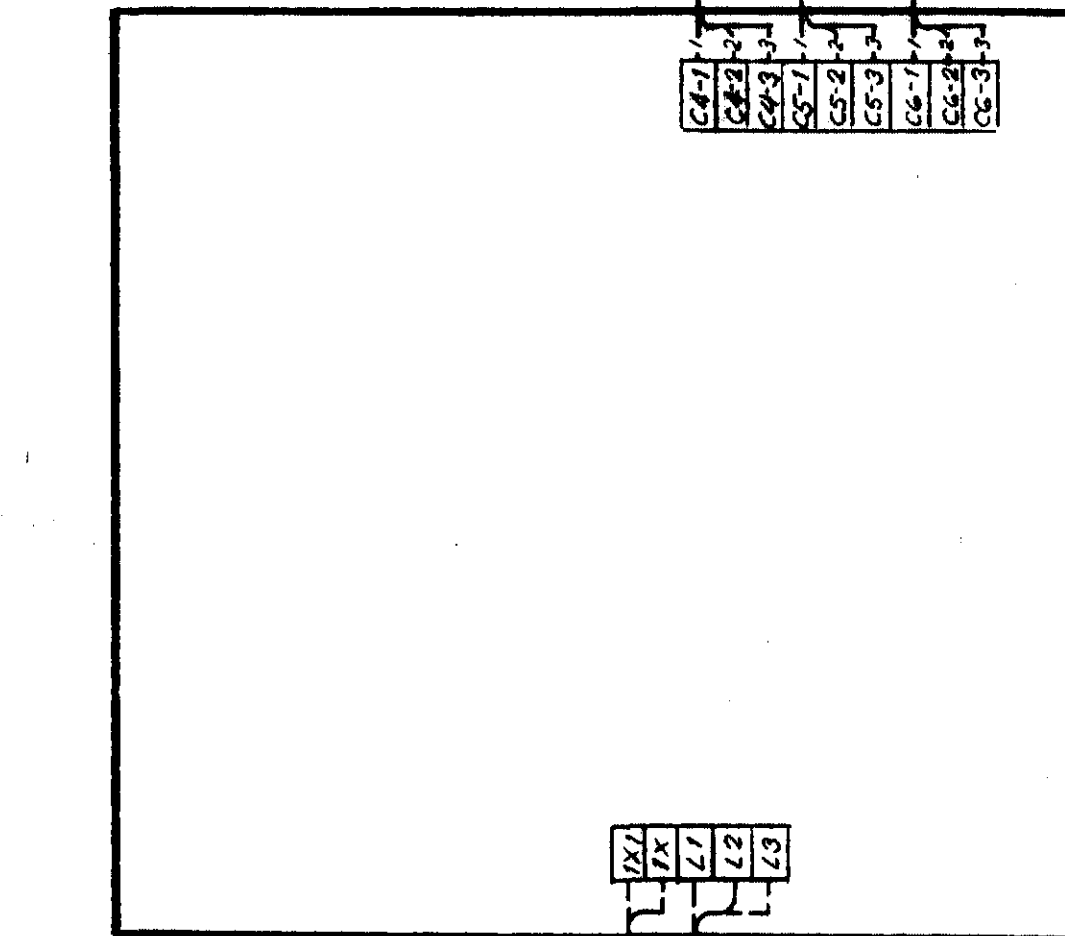
# SAFETY CONTROL PANEL, PLANT #3

(FITTED IN FAN ROOM, BOAT DECK FR-117 STBD)

TCL = 11A

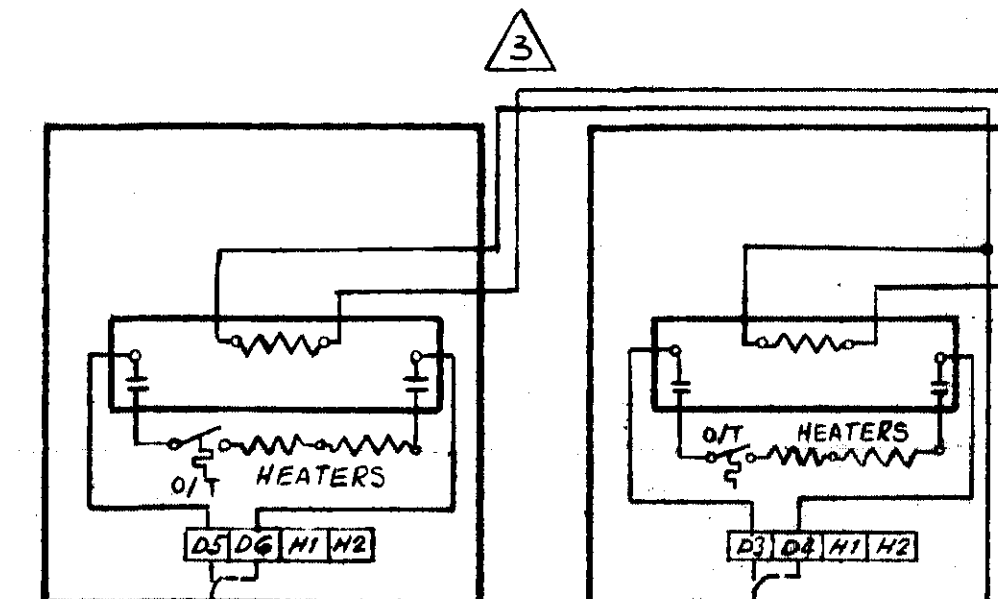
TCL = 10A

TCL = 11A

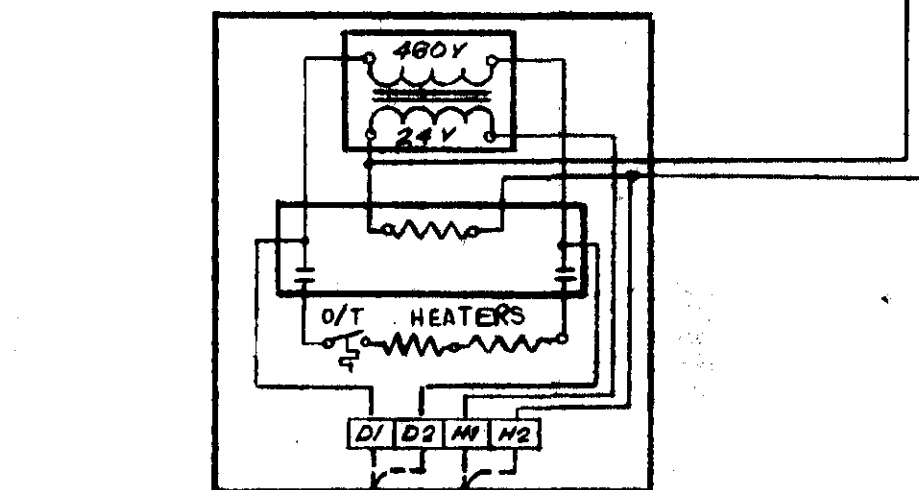


P-433-11A 2c#14  
FAN INTERLOCK  
FROM PLANT #3  
COMPRESSOR CONTROL  
PANEL FITTED IN  
FAN RM. BOAT DK.

440V 3PH 60HZ SUPPLY  
FROM ACCOM. HEATING PANEL  
FITTED IN ELEC. LKR.  
FR-123 STBD MAIN DECK  
(SEE SHEET No 21)



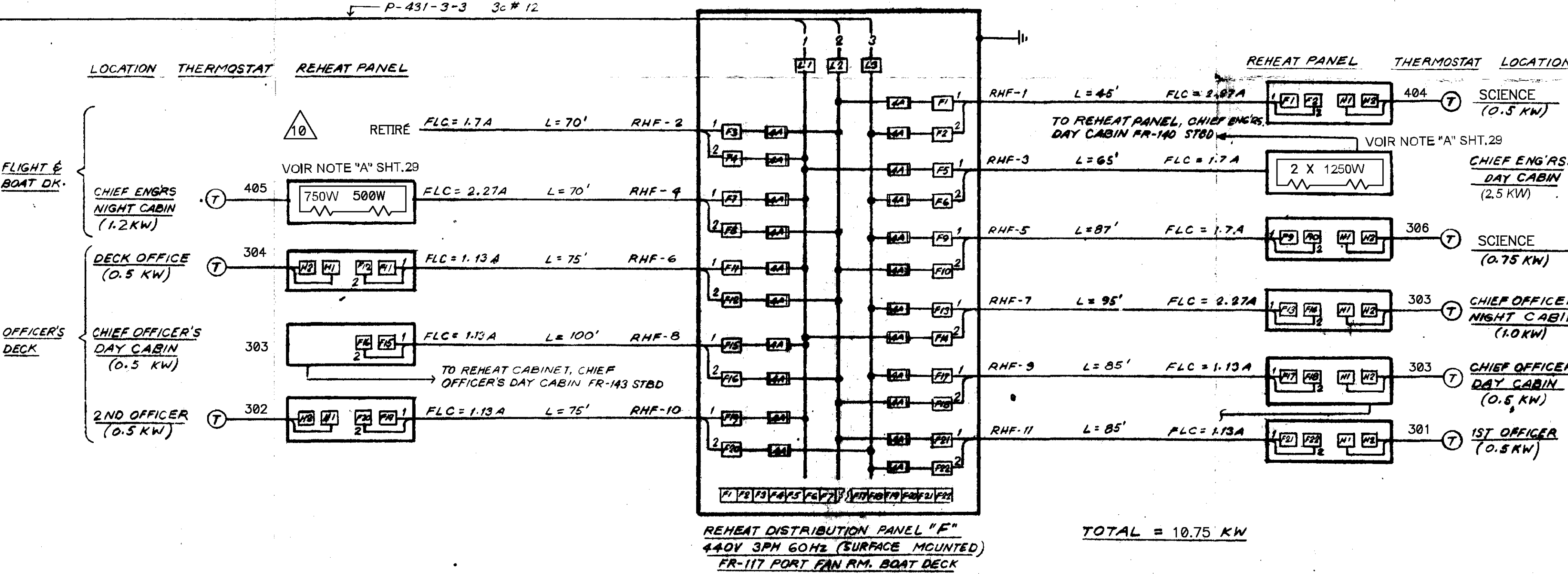
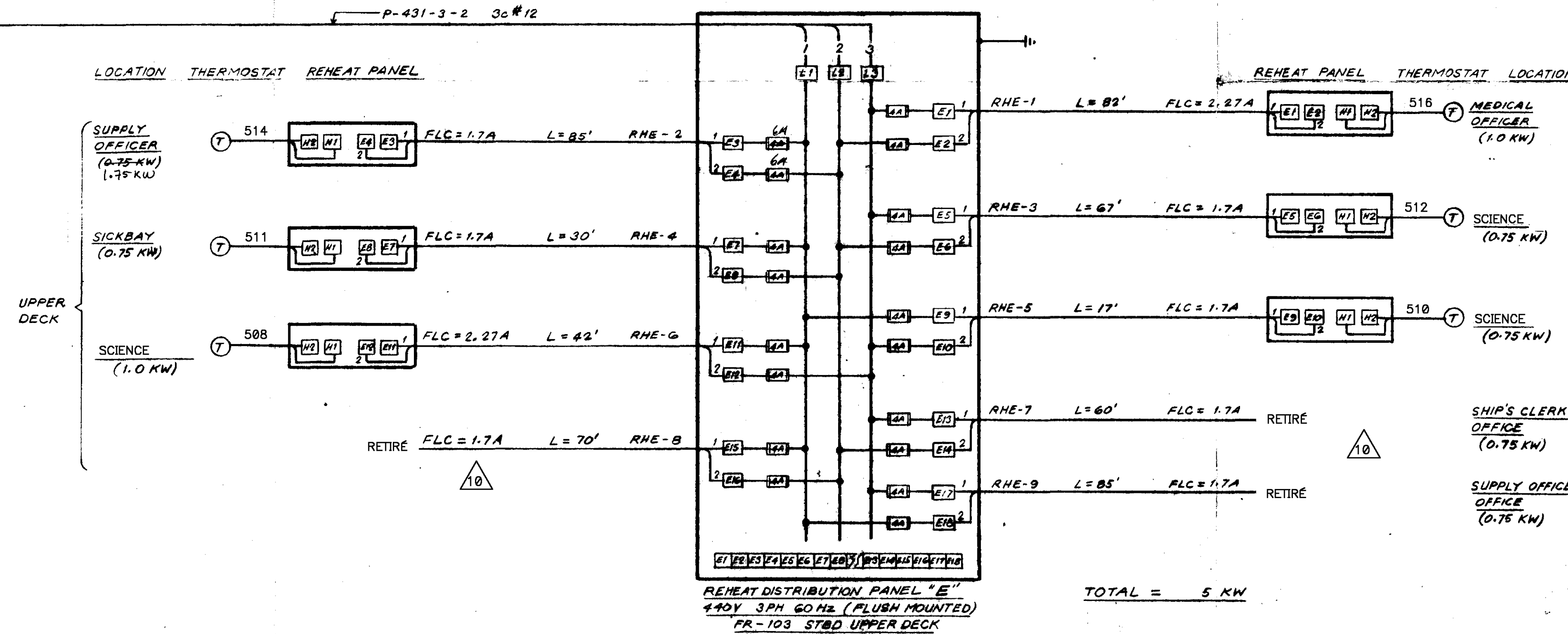
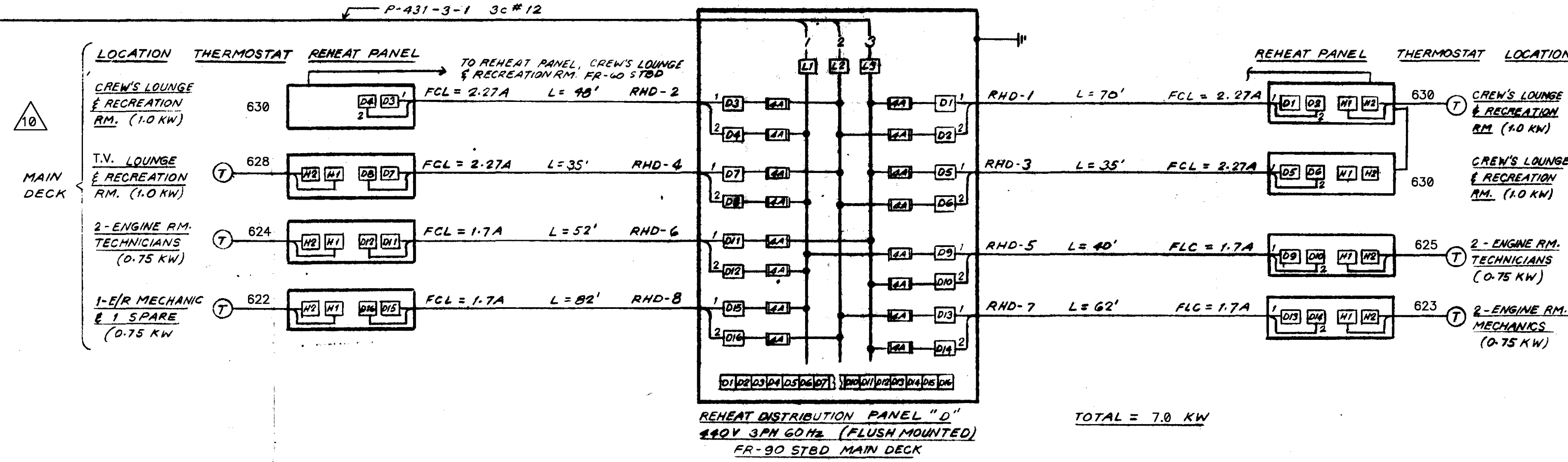
TO REHEAT DIST. PANEL "D"



TO REHEAT DIST. PANEL "D"

TO THERMOSTAT

CREW'S LOUNGE & RECREATION RM.  
REHEAT PANELS



MAIN DECK

UPPER DECK

FLIGHT & BOAT DK.

OFFICER'S DECK

## NOTES:

1. CABLES TO THERMOSTATS TO BE 2c#14. ALL OTHER CABLES ARE 3c#14 A.W.G. CROSS-LINKED POLYETHYLENE P.V.C. BRONZE BRAID ARMOUR, UNLESS OTHERWISE INDICATED.
2. FOR A/C VENTILATION AND HEATING SYSTEM DECK PLAN, SEE DWG. No. 221-900-7 SHEET 1 & 2.
3. FOR TYPICAL CABIN REHEAT PANEL CONNECTION DIAGRAM, SEE SHEET No. 31.
4. THE #3 CONDUCTOR FOR REHEAT CIRCUITS SHALL BE UTILIZED AS THE GROUND WIRE AND IDENTIFIED AS SUCH AT EACH TERMINATION BY A PERMANENTLY INSTALLED PLASTIC SLEEVE. THE TERMINATION AT THE REHEAT DISTRIBUTION PANEL SHALL BE AT THE GROUND BAR SUPPLIED WHICH SHALL HAVE AN ELECTRICAL CONDUCTOR POSITIVELY GROUNDED TO THE SHIP'S STRUCTURE.

10	AS FITTED	GAD	03/05			
9	DRAWING MADE AS FITTED HULL 221	G. KEE	2/6/78			
3	REMOVED TRANSFORMERS IN TWO REHEAT PANELS IN CREW'S LOUNGE & REC. RM. AND CONNECTION CHANGED.	JRP	24/77			
1	CABLES FROM DISTRIBUTION PANELS TO REHEAT PANELS CHANGED TO 3c#14.	JRP	17/1/77			
No.	REVISION	BY	DATE			
APPROVALS	REPRESENT'V.	DATE	REPRESENT'V.	DATE		
	M.O.T.	L. LENNOX	1/5-76	CS1	N. SIGSWORTH	30-76
				11/05/76	F.B. MORT	19-11-76
DRAWN	CHECKED	APPROVED	DATE			
JRP	2/5/76	[Signature]	4/10/76			
HULL-221		DWG. No. 221-900-8 SHT. 30				
SYSTEM :						
A/C VENTN. & ACCOMM. HEATING SYSTEM PLANT No. 3 E.W. DIAGRAM						